



## APHRODITE 33



# APHRODITE 33

## BROKER'S COMMENTS

Charming Aphrodite 33, ideal for a comfortable stay on board due to the spacious saloon, aft cabin, bathroom and kitchen. This Aphrodite 33 has a electric winches, bow thruster, Webasto heating, boiler for warm water, fridge, electric windlass, autopilot etc. The Aphrodite 33 is for the sailor who appreciates quality in construction and reliability. She will be in our sales marina on the 5th of august.

*Johan Schootstra*

## SPECIFICATIONS

<b>Dimensions</b>	10.34 x 3.30 x 1.60 (m)	<b>Builder</b>	Rex Marin AB - Henan
<b>Built</b>	1989	<b>Cabins</b>	2
<b>Material</b>	GRP	<b>Berths</b>	6
<b>Engine(s)</b>	1 x Volvo Penta MD2003 diesel	<b>Hp/Kw</b>	28.00 (hp), 20.58 (kw)
<b>Asking price</b>	sold (VAT )	<b>Lying</b>	contact Hindeloopen

## CONTACT

<b>Sales office</b>	De Valk Hindeloopen B.V.	<b>Telephone</b>	+31 514 52 40 00
<b>Address</b>	Oosterstrand 1 8713 JS Hindeloopen NL	<b>E-mail</b>	hindeloopen@devalk.nl

## DISCLAIMER

These particulars are given in good faith as supplied but cannot be guaranteed.



## GENERAL

Model	APHRODITE 33
Type	sailing yacht
LOA (m)	10,34
LWL (m)	8,80
Beam (m)	3,30
Draft (m)	1,60
Air draft (m)	14,50
Headroom (m)	1,84
Year built	1989
Launched	1991
Builder	Rex Marin AB - Henan
Country	Sweden
Designer	Carl Beyer
Displacement (t)	6
Ballast (tonnes)	cast iron 2,3
CE norm	NA
Hull material	GRP
Hull colour	white
Hull shape	round-bilged
Keel type	fin keel
Superstructure material	GRP
Rubbing strake	Stainless steel strip
Deck material	GRP
Deck finish	teak
Superstructure deck finish	teak
Cockpit deck finish	teak
Antifouling (year)	new 01-2021 ( in 2014 all layers of paint were removed and a new paint system put on)
Window frame	aluminium
Window material	tempered glass
Deckhatch	2x Lewmar



Fuel tank (litre)	stainless steel 130 ltr.
Level indicator (fuel tank)	VDO
Freshwater tank (litre)	stainless steel 160 ltr.
Level indicator (freshwater)	VDO
Blackwater tank (litre)	60 ltr. (not connected)
Wheel steering	mechanical
Extra info	all valves are renewed in January 2021

## ACCOMMODATION

Cabins	2
Berths	6
Interior	mahogany
Floor	teak
Saloon	yes
Headroom saloon (m)	1.84 mtr.
Heating	diesel ducted hot air Webasto Airtop (checked January 2021)
Navigation center	yes
Chart table	yes
Aft Cabin	yes
Galley	yes
Countertop	plastic
Sink	GRP
Cooker	calor gas - ENO Marine 3 pits
Oven	In cooker
Fridge	Frigomatic
Hot water system	220V + engine Isothemp magic 30 ltr. boiler
Water pressure system	electrical
Owners cabin	v-bed Forward cabin
Bed length (m)	2,10 mtr.
Wardrobe	drawers
Guest cabin 1	double bed Aft cabin



Bed length (m)	2.00 x 2.00 mtr.
Wardrobe	shelves
Bathroom	shared
Toilet	New Juli 2020
Toilet system	manual
Wash basin	Yes
Shower	Yes

## MACHINERY

No of engines	1
Make	Volvo Penta
Type	MD2003
HP	28
kW	20,58
Fuel	diesel
Year installed	1989
Maximum speed (kn)	7
Cruising speed (kn)	6,5
Engine hours	2409
Engine cooling system	freshwater heat exchanger
Drive	shaft
Engine controls	bowden cable
Gearbox	Volvo Penta
Bowthruster	electric - 2014
Exhaust	watercooled
Propeller type	folding
Propeller blades	3
Propeller shaft material	stainless steel
Shaft lubrication	grease
Manual bilge pump	Whale
Electric bilge pump	yes



Electrical installation	12 / 220 Volt
Start battery	2015
Service battery	2019
Battery charger	Victron 20A
Diode battery combiners	renewed in January 2021
Shorepower	with cable
Extra info	the four engine mounts were renewed in January 2021

## NAVIGATION

Compass	Plastimo
Depth sounder	Autohelm Tridata
Log	Autohelm Tridata
Windset	Raymarine ST60+
VHF	Icom M505 + outside speaker
Autopilot	Autohelm ST 6000
Plotter/GPS	Geonav 6 sunshine
Navtex	K-41 with display
Navigation lights	yes

## EQUIPMENT

Fixed windscreen	tempered glass
Sprayhood	yes
Cockpit cover	yes
Winter cover	yes
Cockpit table	Teak
Bathing platform	Integrated in hull
Boarding ladder	stainless steel
Anchor	Bruce - stainless steel
Anchor chain	7 mtr. chain and 25 mtr. robe
Windlass	electrical - Simpson-Lawrence
Sea railing	wire



Grab rail (superstructure)	teak
Pushpit	yes
Pulpit	yes
Fenders	yes
Mooring lines	yes
Radio-cd player	Kenwood
Cockpit speakers	yes
Speakers in salon	yes
Fire extinguisher	yes

## RIGGING

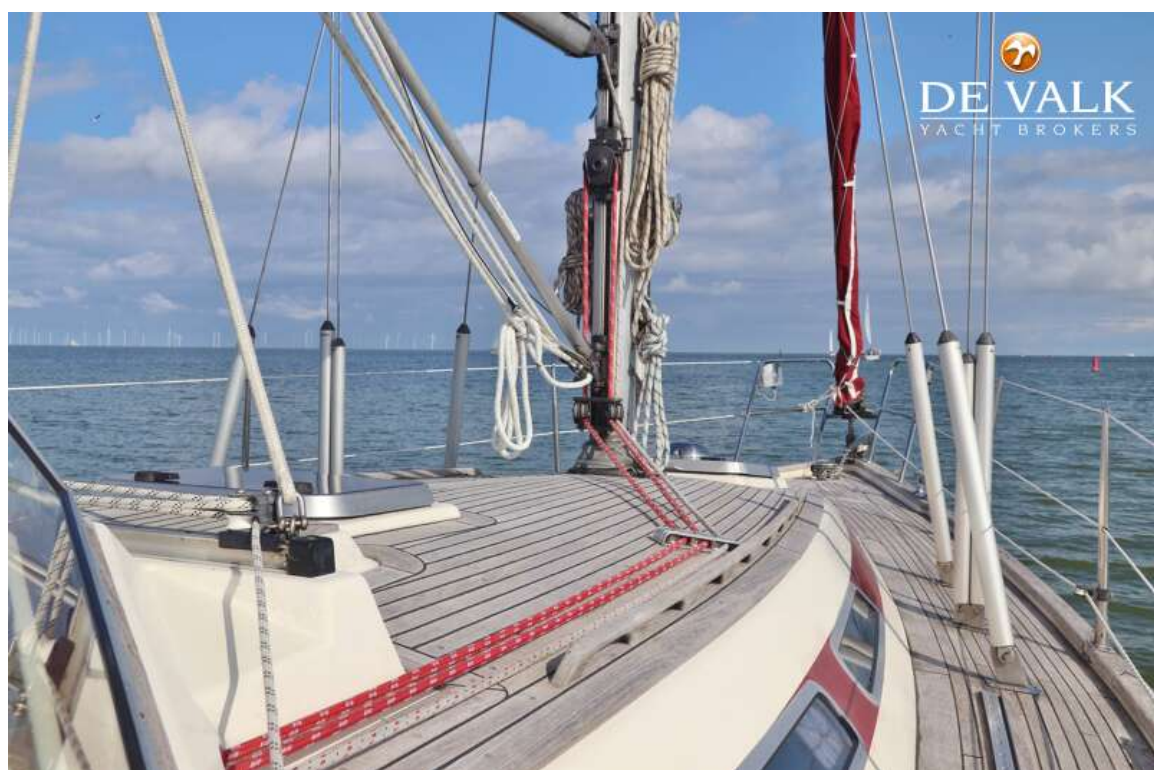
Rigging	sloop
Standing rigging	wire
Brand mast	Seldén
Material mast	aluminium
Spreaders	2 pair
Mainsail	Gaastra
Stoway mast	yes
Jib	Approx. 17m <sup>2</sup>
Genoa	Approx. 26m <sup>2</sup> - 2014
Genoa furler	Furlex 200s
Genoa cover	yes
Reefing System	main in-mast furling
Backstay adjuster	mechanical
Boomvang	tackle
Primary sheet winch	1x Andersen 12ST single speed
Genoa sheetwinches	2x Andersen 46ST electric - 2014
Halyard winches	1x Andersen ST 12 single speed 2x Andersen 16 two speed on mast
Spi-pole	aluminium



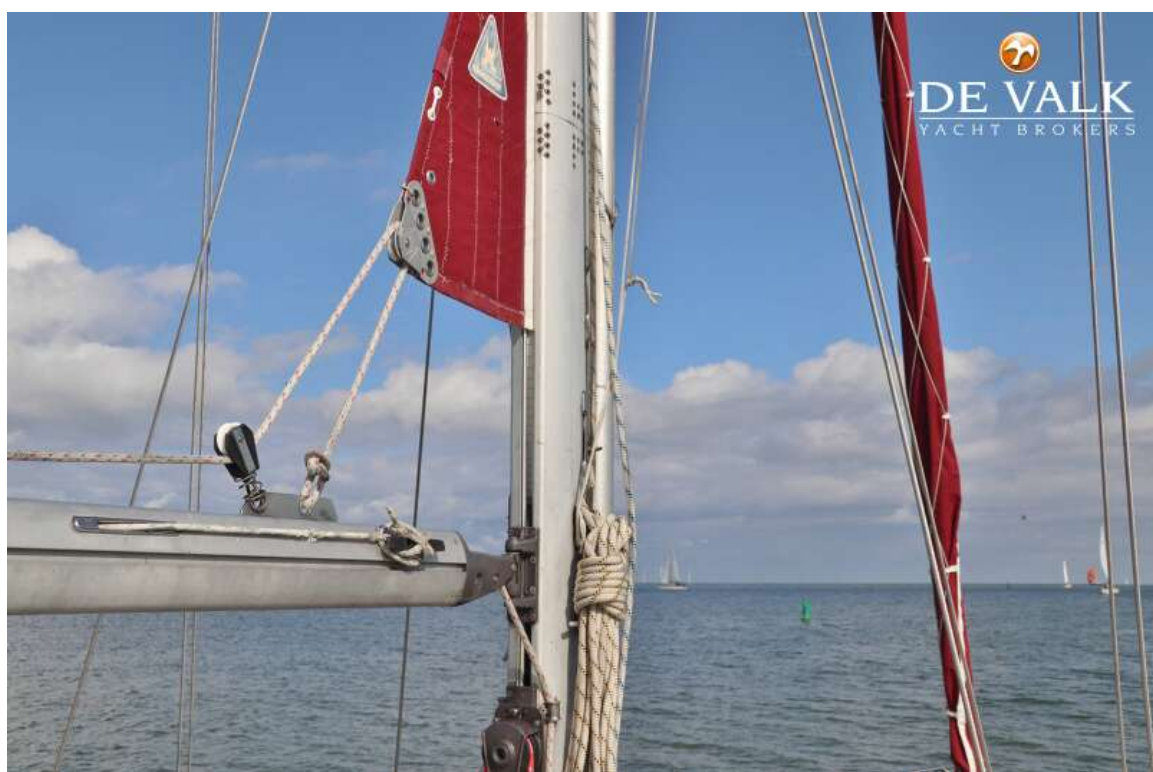
# APHRODITE 33



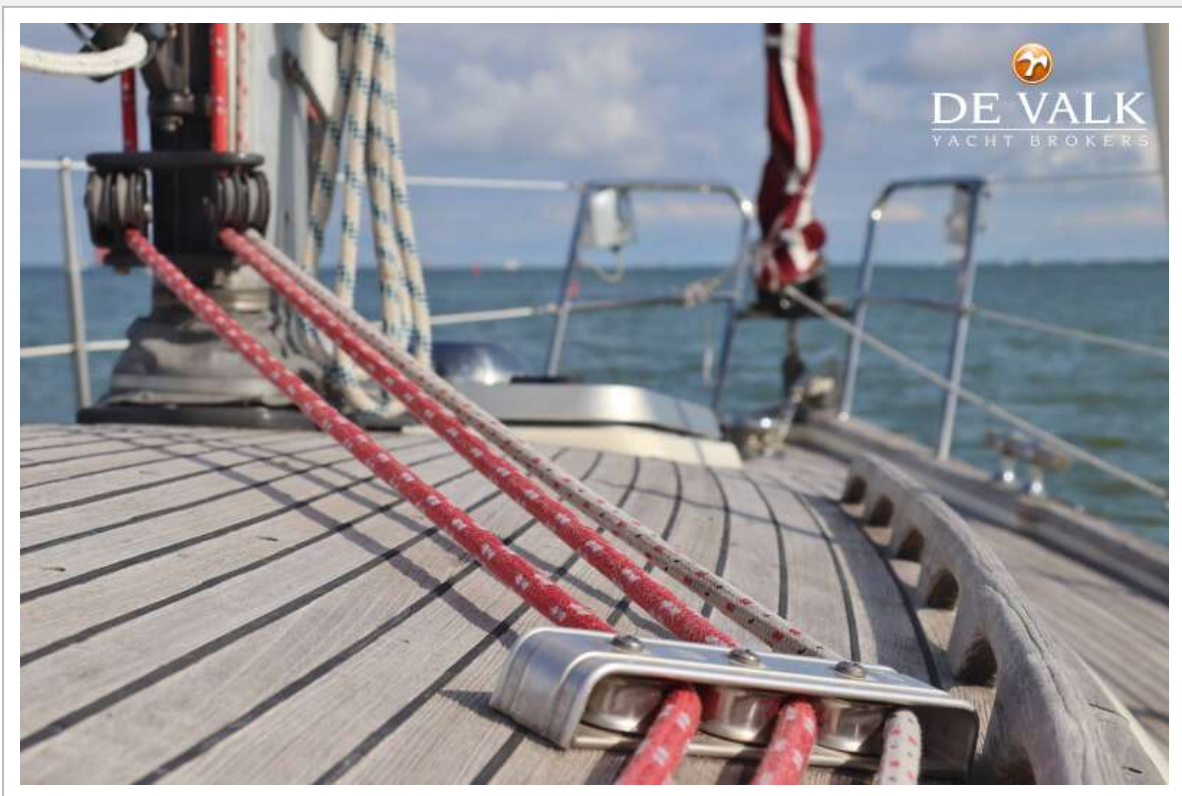
# APHRODITE 33



# APHRODITE 33



# APHRODITE 33



# APHRODITE 33



# APHRODITE 33



# APHRODITE 33



# APHRODITE 33



# APHRODITE 33



# APHRODITE 33



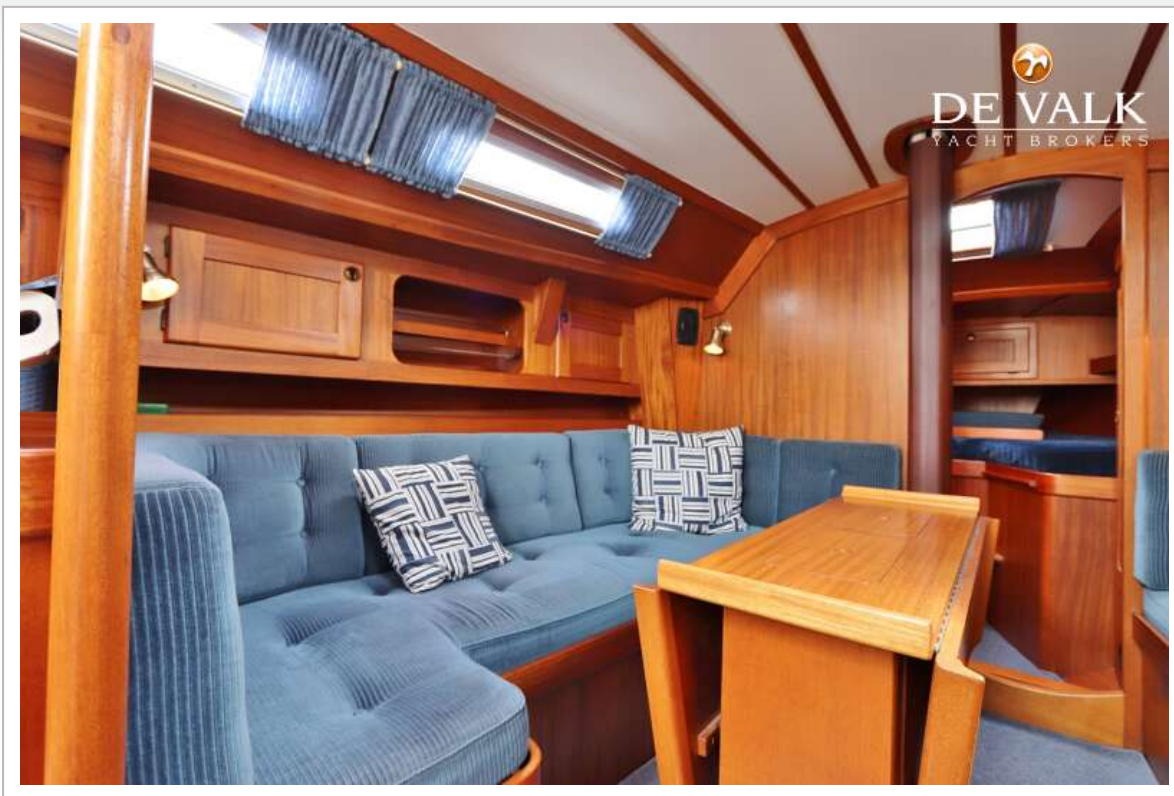
# APHRODITE 33



## APHRODITE 33



# APHRODITE 33



# APHRODITE 33

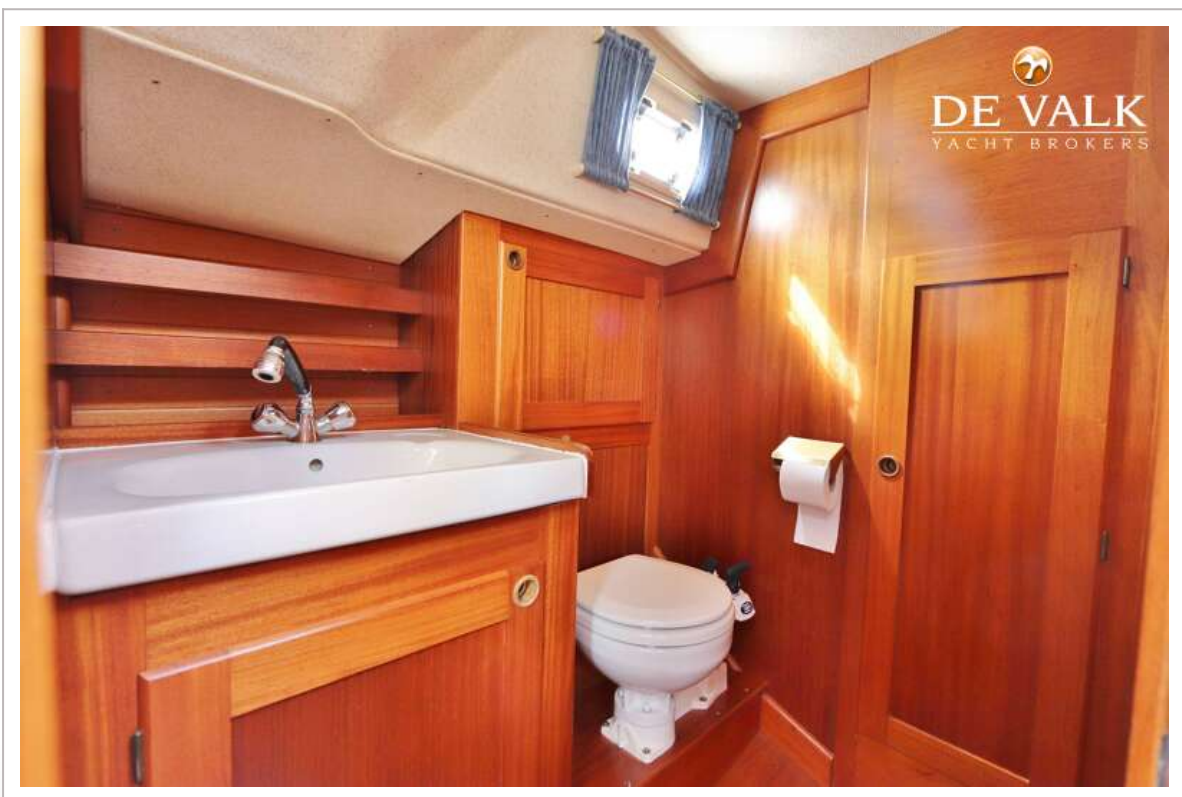


## APHRODITE 33

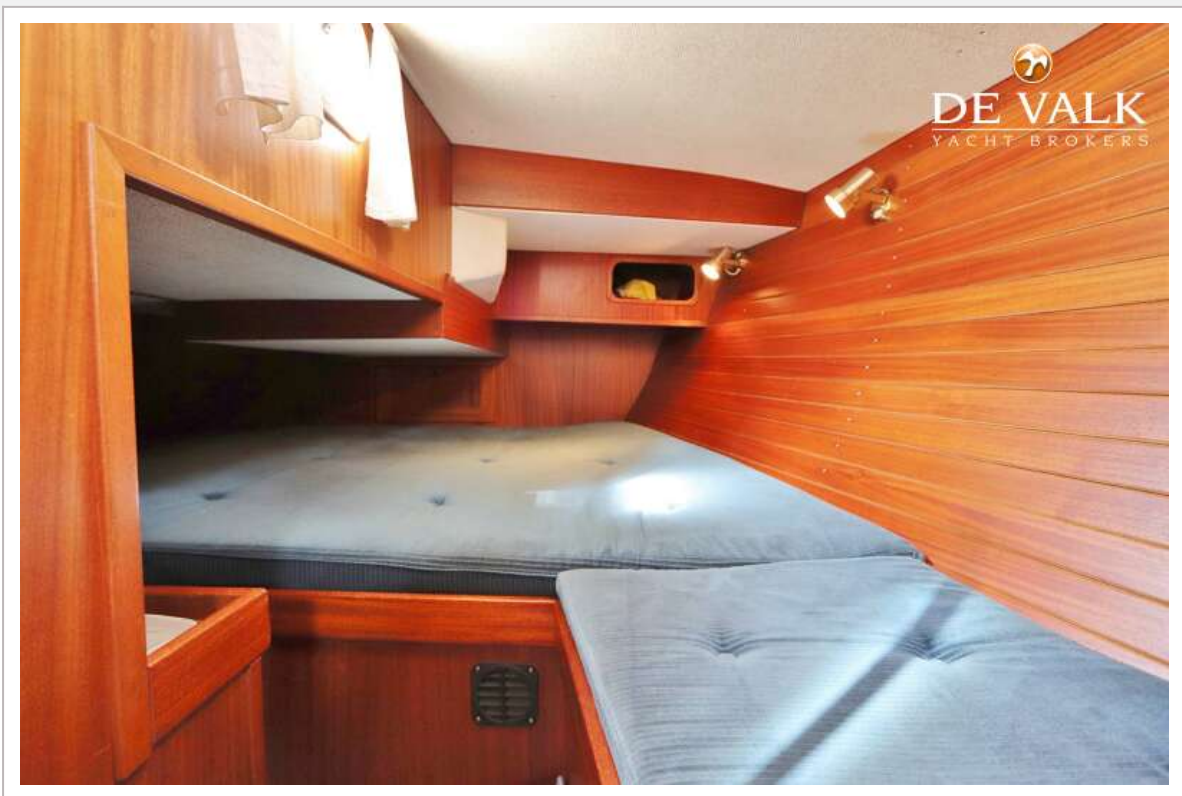




# APHRODITE 33



# APHRODITE 33



## APHRODITE 33

