



LEOPARD SPORT 23 OPEN



LEOPARD SPORT 23 OPEN

BROKER'S COMMENTS

The Leopard 23 Open is a fantastic example of how you like to cruise in good weather. A very spacious aft deck with two sunbeds, but also a large outdoor seating area for at least 8 people, wonderfully sheltered under the Bimini that covers the entire seating area. She will be auctioned on October 11 in cooperation with BVA Auctions. For further details and viewing days go to: <https://bit.ly/3sJQwMw> Opening price of the auction EUR. 100,000, offers can be made from October 4 on the website of BVA Auctions

Arjen Hoeksma

SPECIFICATIONS

Dimensions	24.00 x 5.20 x 1.80 (m)	Builder	Cantieri Navale Arno S.R.L.
Built	1994	Cabins	4
Material	GRP	Berths	9
Engine(s)	2 x MAN diesel	Hp/Kw	2 x 1,199.00 (hp), 881.27 (kw)
Asking price	sold (VAT)	Lying	elsewhere / Not at sales office

CONTACT

Sales office	De Valk Loosdrecht B.V.	Telephone	+31 (0)35 582 90 30
Address	't Breukeleveense Meentje 6 1231LM Loosdrecht / Wijdmeren NL	E-mail	loosdrecht@devalk.nl

DISCLAIMER

These particulars are given in good faith as supplied but cannot be guaranteed.



LEOPARD SPORT 23 OPEN

GENERAL

Model	LEOPARD SPORT 23 OPEN
Type	motor yacht
LOA (m)	24,00
LWL (m)	21,00
Beam (m)	5,20
Draft (m)	1,80
Year built	1994
Builder	Cantieri Navale Arno S.R.L.
Country	Italy
Designer	Paolo Calìari
Displacement (t)	32
Gross tonnage	74
CE norm	NA
Hull material	GRP
Hull colour	white
Superstructure material	GRP
Rubbing strake	
Deck material	
Deck finish	teak
Cockpit deck finish	teak
Window frame	
Portholes	stainless steel
Radar arch	
Fuel tank (litre)	stainless steel 5.800L
Level indicator (fuel tank)	yes
Freshwater tank (litre)	stainless steel 2x 1.000L
Level indicator (freshwater)	yes
Blackwater tank (litre)	GRP 1.200L
Level indicator (blackwater)	yes
Greywater tank (litre)	stainless steel 500L:



Level indicator (greywater)	yes
Wheel steering	
Outside helm position	

ACCOMMODATION

Cabins	4
Berths	9
Crew cabin	yes
Crew berths	2
Open cockpit	yes
Aft deck	yes
Headroom saloon (m)	2.20
Heating	
Air-conditioning	Saloon, cabins and outlet outside in cockpit
Navigation center	yes
Chart table	yes
Dining room	yes
Galley	yes
Countertop	corian
Sink	stainless steel
Cooker	ceramic
Oven	Bosch HMJ7638
Microwave	Bosch SS-611H
Fridge	yes
Hot water system	220V + engine
Water pressure system	electrical
Dishwasher	Bosch Supersilence
Ice maker	Outside
Crockery	yes
Owners cabin	
Bed length (m)	2.20



LEOPARD SPORT 23 OPEN

Wardrobe	hanging/drawers/shelves
Bathroom	en suite
Toilet	en suite
Toilet system	electric
Wash basin	
Shower	
Guest cabin 1	
Wardrobe	hanging/drawers/shelves
Bathroom	en suite
Toilet	en suite
Toilet system	electric
Wash basin	
Shower	
Guest cabin 2	
Wardrobe	hanging/drawers/shelves
Bathroom	en suite
Toilet	en suite
Toilet system	electric
Wash basin	
Crew cabin(s)	2 berths
Bathroom (crew)	yes
Toilet (crew)	yes
Toilet system	electric
Washing machine/dryer combi	yes
Wet bar	Outside
Extra info	Outside 2 fridges and icemaker

MACHINERY

No of engines	2
Make	MAN
HP	1199



LEOPARD SPORT 23 OPEN

kW	881,27
Fuel	diesel
Year installed	1994
Maximum speed (kn)	32
Cruising speed (kn)	24
Engine hours	9250
Engine cooling system	seawater
Drive	shaft
Engine controls	electrical
Gearbox	hydraulic
Bowthruster	electric
Sternthruster	electric
Propeller blades	4 blades
Generator	1x Kohler 18Kw and 1x 9 Kw
Running hours generator	195h (9Kw) 675 (18Kw)
Batteries	yes
Start battery	02-2020
Service battery	02-2017
Battery charger	Dolphin 24V-80A
Inverter	Mastervolt
Shorepower	
Trimtabs	With indicator

NAVIGATION

Compass	yes
Depth sounder	yes
Log	yes
VHF	yes
VHF handheld	yes
Autopilot	Simrad AP20
Rudder angle indicator	yes



LEOPARD SPORT 23 OPEN

Radar	yes
Plotter/GPS	Furuno GP-39
Radar/GPS	Raymarien SL631
Navtex	Furuno NX-300
Navigation lights	yes

EQUIPMENT

Fixed windscreen	yes
Bimini	yes
Cockpit cushions	yes
Cockpit table	yes
Cockpit chairs	yes
Bathing platform	yes
Boarding ladder	aluminum
Gangway	Besenzoni BES484
Deck shower	yes
Anchor	
Anchor chain	Galvanised steel 100 mtrs
Windlass	
Capstan	yes
Dinghy	With steering wheel
Outboard	Johnson 45hp
Sea railing	
Wiper	yes
Horn	
Fenders	yes
Mooring lines	yes
TV	TV in saloon, master cabin and 40"Samsung outside (retractable)
TV receiver	Satellite
Radio-cd player	Sony CDP-M43, ST-D709, TA-D509



LEOPARD SPORT 23 OPEN

iPod connection	yes
Cockpit speakers	yes
Speakers in salon	yes
Speakers in cabin	yes
Extra info	Sony Blu-rayBDP-S550
Extra info	In all cabins Sony CD player
Extra info	Tender bay hydraulic






DE VALK
YACHT BROKERS



BROKERAGE | CHARTER | BERTHS | FINANCE | INSURANCE | YACHT MANAGEMENT


DE VALK
YACHT BROKERS



**This yacht will be auctioned,
for further details please visit www.devalk.nl**

**Dit schip zal worden geveild,
voor meer informatie gaat u naar www.devalk.nl**

**Dieses Schiff wird versteigert,
für weitere informationen besuchen Sie www.devalk.nl**

WWW.DEVALK.NL


DE VALK
YACHT BROKERS



LEOPARD SPORT 23 OPEN



LEOPARD SPORT 23 OPEN



LEOPARD SPORT 23 OPEN



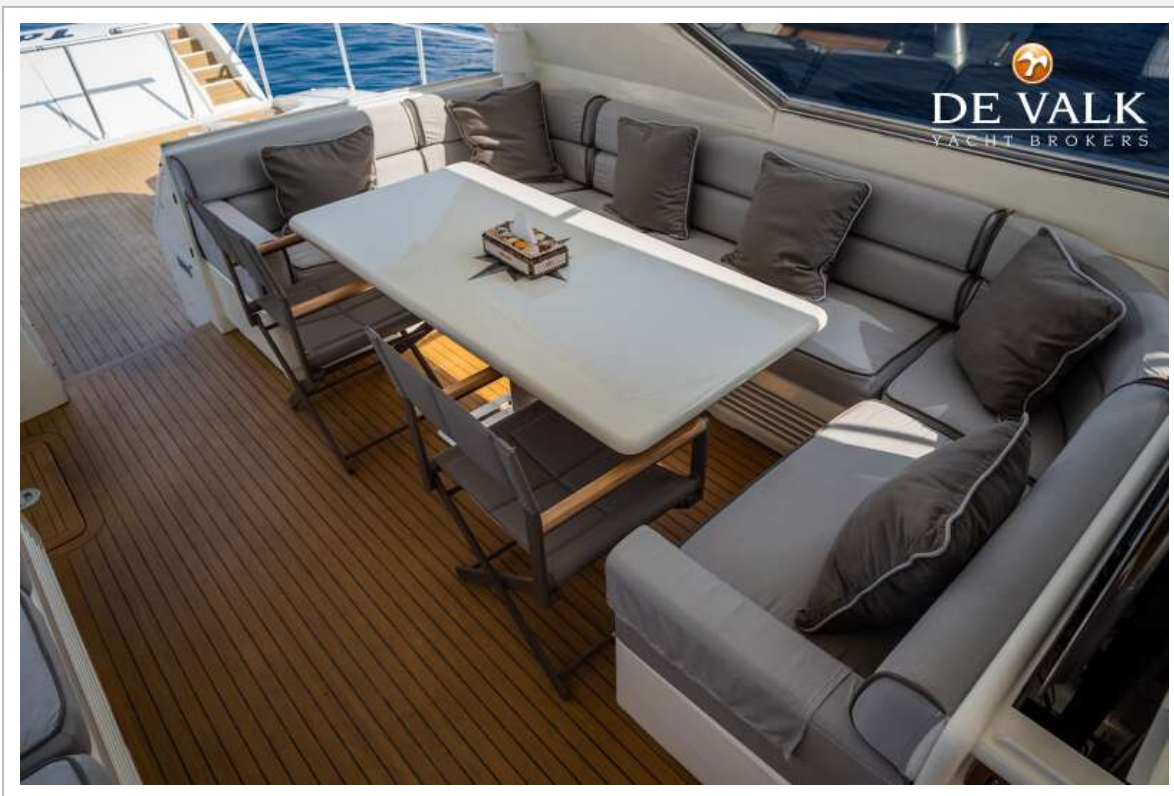
LEOPARD SPORT 23 OPEN



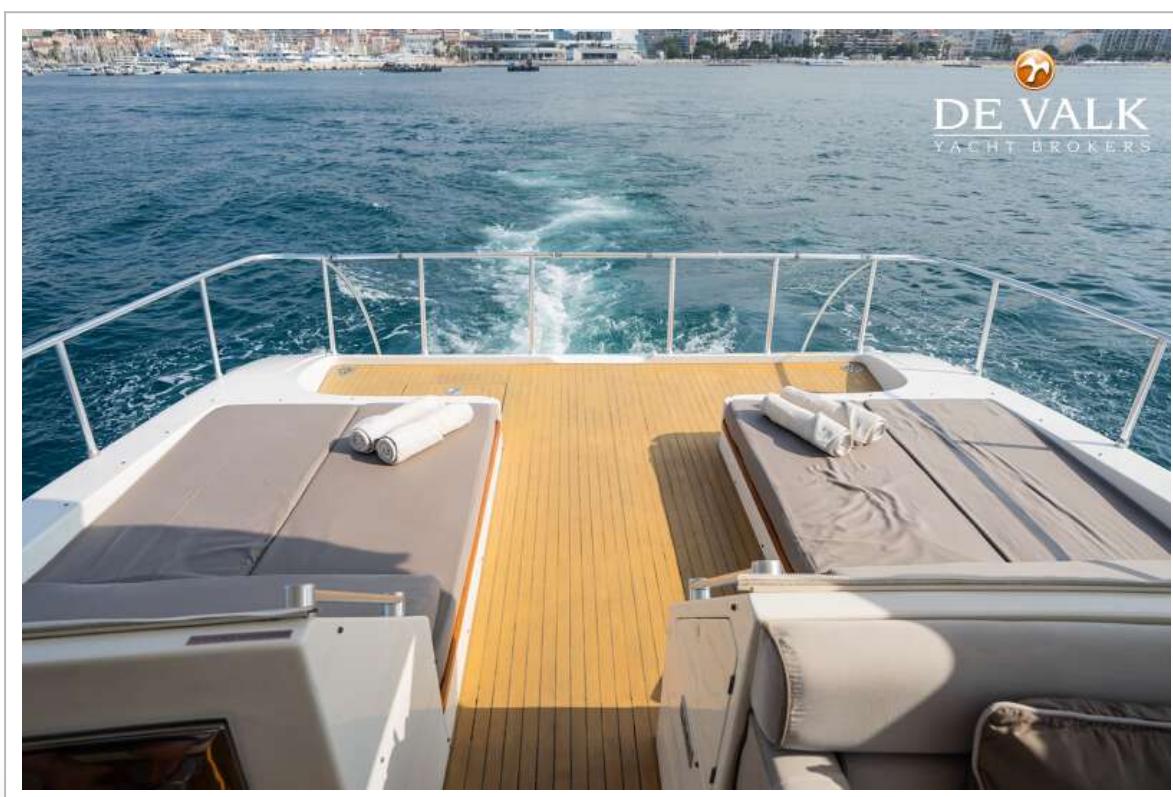
LEOPARD SPORT 23 OPEN



LEOPARD SPORT 23 OPEN



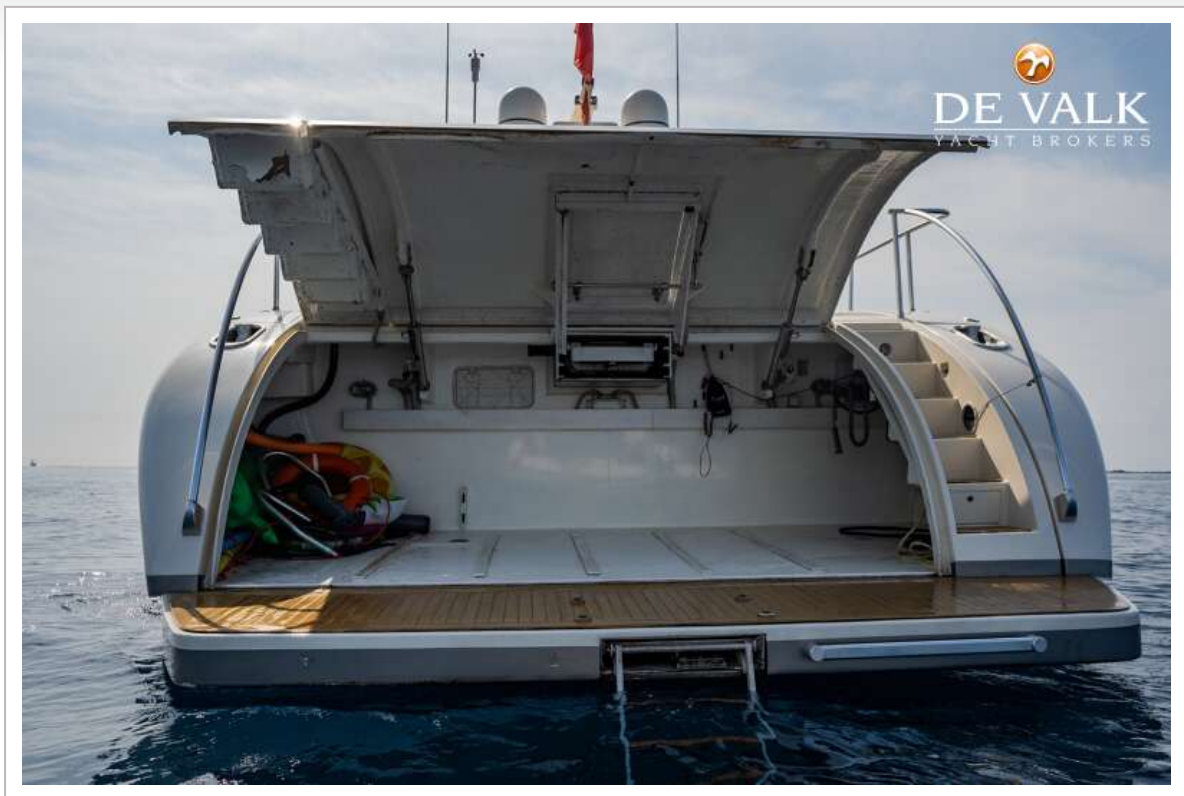
LEOPARD SPORT 23 OPEN



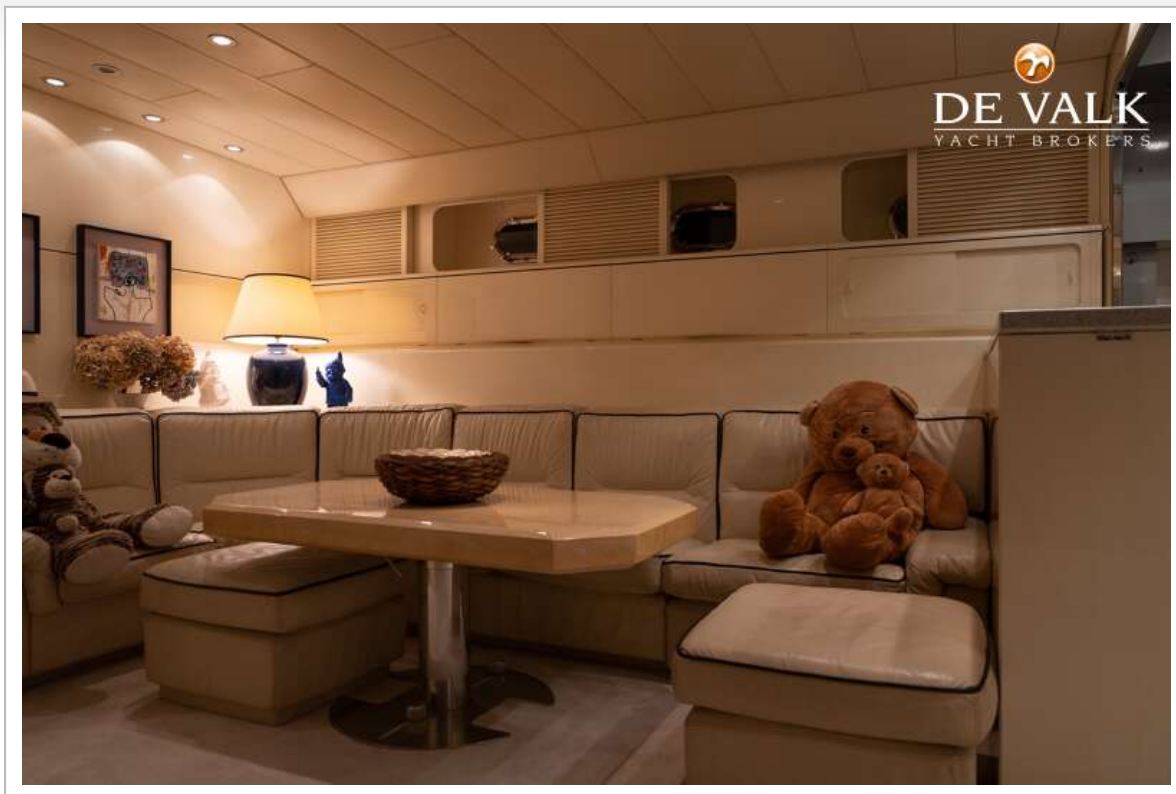
LEOPARD SPORT 23 OPEN



LEOPARD SPORT 23 OPEN



LEOPARD SPORT 23 OPEN



LEOPARD SPORT 23 OPEN

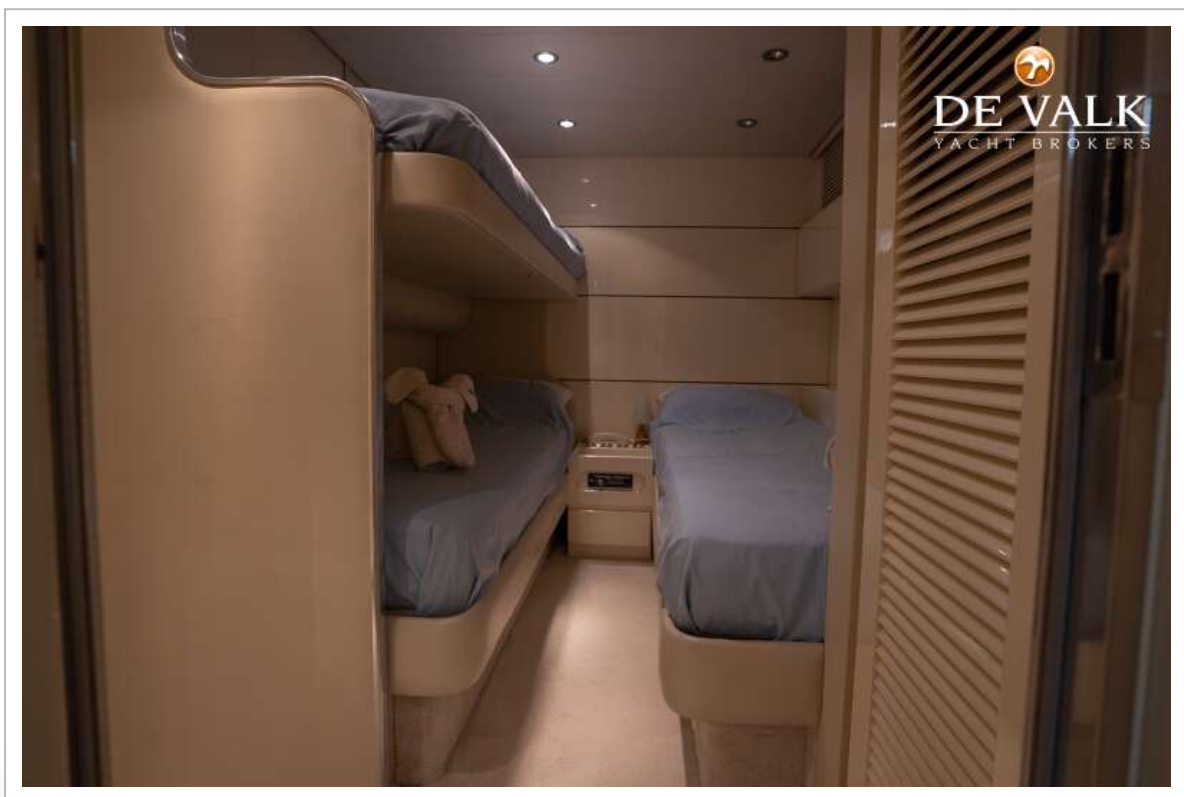


LEOPARD SPORT 23 OPEN



LEOPARD SPORT 23 OPEN





LEOPARD SPORT 23 OPEN



LEOPARD SPORT 23 OPEN

