



DE VALK
YACHT BROKERS



GREENLINE 40 HYBRID



DE VALK
YACHT BROKERS

GREENLINE 40 HYBRID

BROKER'S COMMENTS

The Greenline 40 is one of most iconic motor yachts in recent years and this example has the unique optional hybrid propulsion with which you can sail for 20 nm in silence. This Greenline 40 Hybrid has an extensive equipment list and is very well maintained and has only 3 owners since new. She is suitable for offshore use (CE Class B) as well as for inland waterways (low air draft. She offers a lot of comfort and space with a large saloon, two bedrooms, one en suite bathroom and a galley aft. Don't hesitate and contact us for a viewing. We expect her to sell quickly!

Nick Lanting

SPECIFICATIONS

Dimensions	11.99 x 4.24 x 0.84 (m)	Builder	Seaway Yachts
Built	2014	Cabins	2
Material	GRP	Berths	5
Engine(s)	2 x Volkswagen 150-5 TPi diesel	Hp/Kw	2 x 150.00 (hp), 110.00 (kw)
Asking price	sold (VAT)	Lying	elsewhere / Not at sales office

CONTACT

Sales office	De Valk Sint Annaland B.V.	Telephone	+31 (0)166 601 000
Address	Koelhuisweg 4 4697 RM Sint Annaland NL	E-mail	sintannaland@devalk.nl

DISCLAIMER

These particulars are given in good faith as supplied but cannot be guaranteed.



GREENLINE 40 HYBRID

GENERAL

Model	GREENLINE 40 HYBRID
Type	motor yacht
LOA (m)	11,99
Beam (m)	4,24
Draft (m)	0,84
Air draft min (m)	2,77
Headroom (m)	2,00
Year built	2014
Builder	Seaway Yachts
Country	Slovenia
Designer	J&J Design
Displacement (t)	8
CE norm	B
Hull material	GRP
Hull colour	off-white
Hull shape	hard chine
Bilge keels	yes
Superstructure material	GRP
Rubbing strake	stainless steel
Deck material	GRP
Deck finish	teak
Superstructure deck finish	non-skid moulded in
Cockpit deck finish	teak
Antifouling (year)	2022
Window frame	aluminium
Window material	tempered glass
Deckhatch	yes
Portholes	stainless steel With flyscreens
Fuel tank (litre)	polyethylene 380
Fuel tank 2 (litre)	polyethylene 380



GREENLINE 40 HYBRID

Level indicator (fuel tank)	yes
Freshwater tank (litre)	polyethylene 2x 150 + 400
Level indicator (freshwater)	yes
Blackwater tank (litre)	polyethylene 63
Level indicator (blackwater)	yes
Blackwater tank extraction	deck extraction + uw line
Wheel steering	hydraulic
Inside helm position	yes

ACCOMMODATION

Cabins	2
Berths	5
Interior	cherry
Floor	wood
Open cockpit	yes
Deck saloon	yes
Headroom saloon (m)	2.00
Sliding roof	electric Webasto, with blinds
Heating	Through air conditioning
Air-conditioning	reverse cycle airco
Chart table	yes
Dinette	yes
Sliding door to cockpit	With large opening window
Galley	yes
Countertop	plastic
Sink	stainless steel 2 x
Cooker	induction Gorenje SuperPower
Microwave	Electrolux
Fridge	Gorenje
Freezer	Gorenje
Hot water system	220V + engine



GREENLINE 40 HYBRID

Water pressure system	electrical
Coffee maker	yes
Crockery	yes
Owners cabin	v-bed Scissor bed
Bed length (m)	2,00 x 0,80 (2x)
Wardrobe	hanging and shelves
Bathroom	en suite
Toilet	en suite
Toilet system	electric
Wash basin	in the bathroom
Shower	en suite
Extra info	Bed slats
Guest cabin 1	twin single Port
Bed length (m)	2,00 x 0,80 (2 x)
Wardrobe	hanging and shelves
Extra info	Bed slats
Washing machine	Candy Aquamatic 1041 D1 4kg
Extra info	Exterior screen blinds

MACHINERY

No of engines	2
Make	Volkswagen
Type	150-5 TPi
HP	150
kW	110
Fuel	diesel
Year installed	2014
Maximum speed (kn)	18,00
Cruising speed (kn)	7,00
Range (nm)	500
Engine hours	570/574



GREENLINE 40 HYBRID

Engine cooling system	freshwater heat exchanger
Drive	shaft
Shaft seal	Volvo Penta seal
Engine controls	electrical ZF
Gearbox	hydraulic
Bowthruster	electric SidePower SE80-185T
Sternthruster	electric SidePower SE80-185T
Electric hybride drive	2 x 7 kW
Exhaust	watercooled
Thrust bearing	Aquadrive
Propeller type	fixed
Propeller blades	4
Propeller shaft material	stainless steel
Shaft lubrication	water
Manual bilge pump	yes
Electric bilge pump	yes
Bilge alarm	yes
Electrical installation	12V & 220V
Batteries	yes
Start battery	2 x Optima (2021)
Service battery	2 x Mastervolt Gel (2017)
Electric engine battery	yes
Bowthruster battery	2 x Optima Blue (2019)
Sternthruster battery	2 x Optima Blue (2019)
Battery monitor	yes
Battery charger	Victron Centaur 12/80
Battery charger/inverter	Victron Quattro 48/5000/70
Solar panel	1398 W / 48 V
Diode battery combiners	yes
Shorepower	with cable
Trimtabs	Bennet
Extra info	2nd ZF engine controls in cockpit



Extra info

Wireless remote for bow & stern thruster

NAVIGATION

Compass

yes

Electric compass

In autopilot

Depth sounder

Garmin (displayed in plotter)

Log

Garmin (displayed in plotter)

VHF

Garmin VHF 100i

Autopilot

Garmin GHC10 + wired remote

Rudder angle indicator

VDO

Radar

Garmin HD closed scanner

GPS

Garmin

Plotter

Garmin GPSmap 5012

Electronic chart(s)

1 x

AIS receiver

Class B

AIS transponder

Class B

Camera

Rear view

Navigation lights

yes

Searchlight

Remote control at helm

EQUIPMENT

Fixed windscreen

yes

Cockpit cover

yes

Cockpit cushions

yes

Bathing platform

Through fold down stern

Boarding ladder

stainless steel

Gangway

Opacmare electric hydraulic telescopic

Deck shower

Hot & cold

Anchor

Pool Stainless steel

Anchor chain

yes

Windlass

electrical



GREENLINE 40 HYBRID

Capstan	On windlass
Deck wash	yes
Sea railing	stainless steel
Grab rail (superstructure)	stainless steel
Railing side opening gates	Aft, port and starboard
Pulpit	yes
Life raft	
Life raft (pers)	
Lifebuoy	Automatic
Wiper	3 x
Window ventilator	Cold air
Horn	electric
Fenders	yes
Mooring lines	yes
TV	Philips 80cm popup saloon, Philips 60cm in fwd cabin
TV receiver	yes
Radio-cd player	Fusion AV700i
DVD player	yes
Cockpit speakers	yes
Speakers in salon	2 x Fusion
Clock - barometer	yes
Fire extinguisher	yes
Extinguisher in engine room	yes
Auto extinguisher system	yes



GREENLINE 40 HYBRID



GREENLINE 40 HYBRID



GREENLINE 40 HYBRID



GREENLINE 40 HYBRID



GREENLINE 40 HYBRID



GREENLINE 40 HYBRID



GREENLINE 40 HYBRID



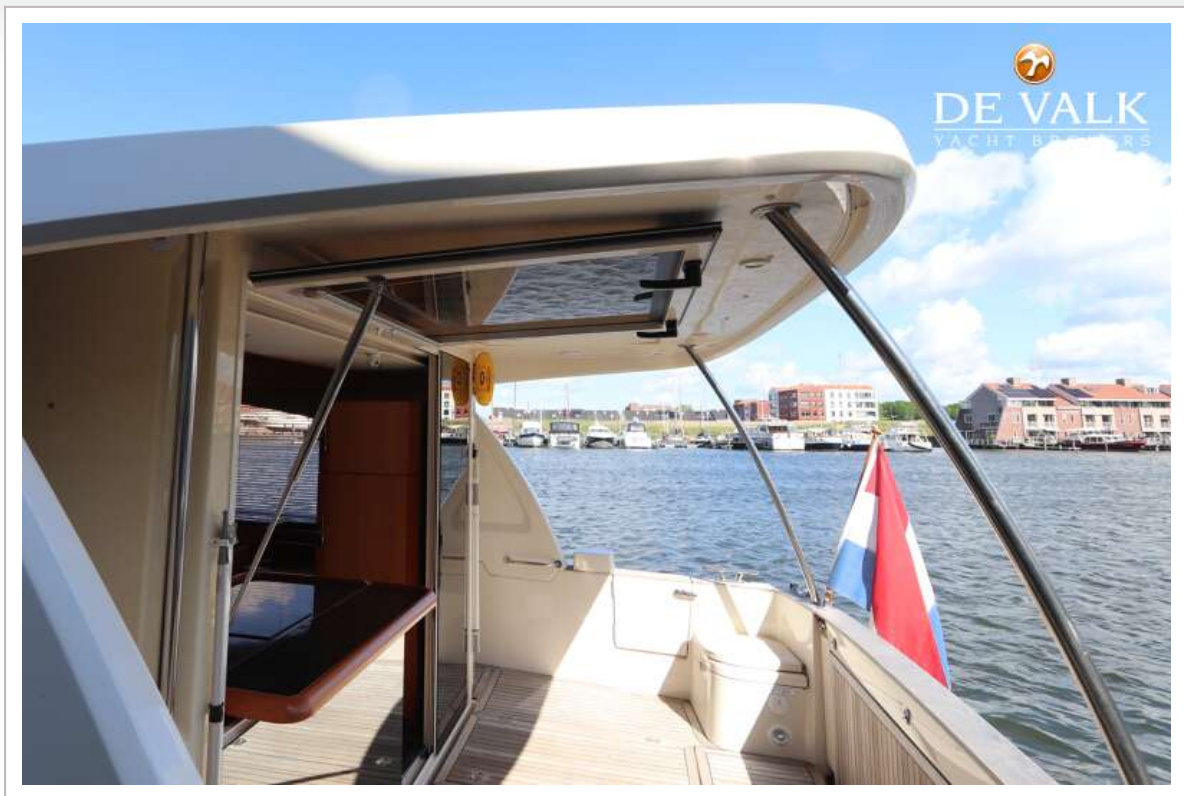
GREENLINE 40 HYBRID



GREENLINE 40 HYBRID



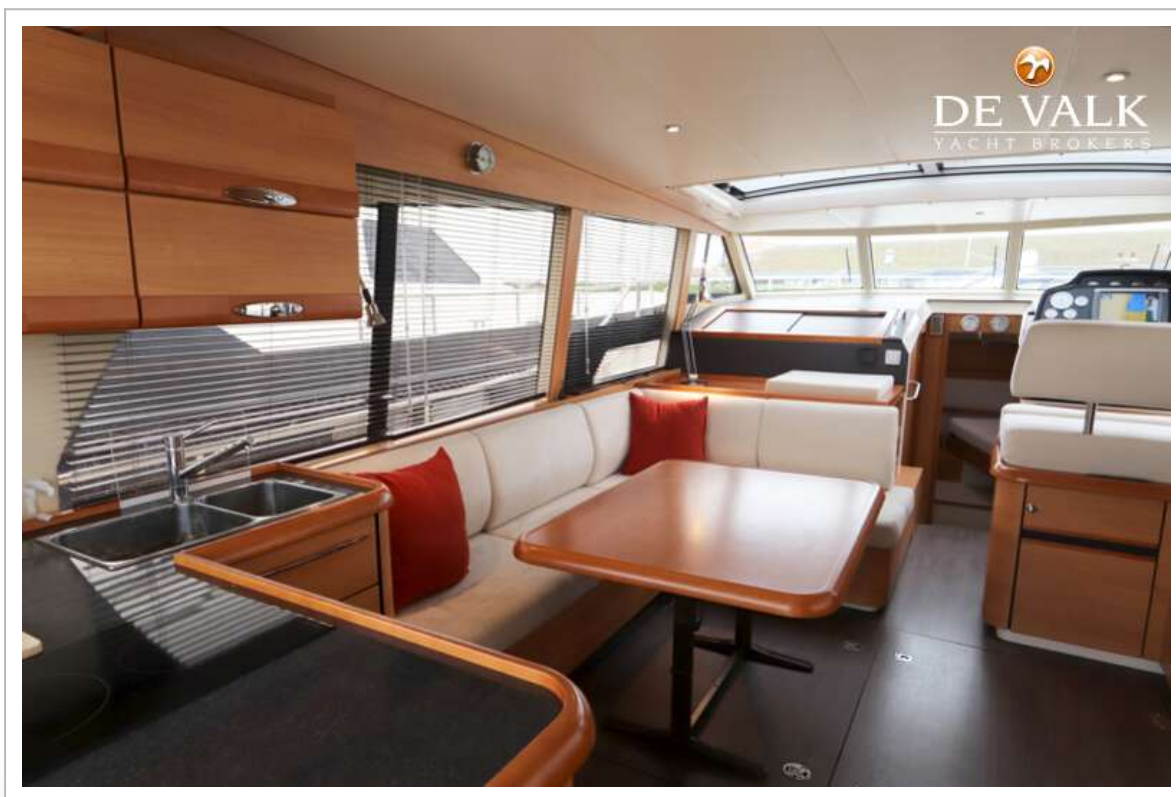
GREENLINE 40 HYBRID



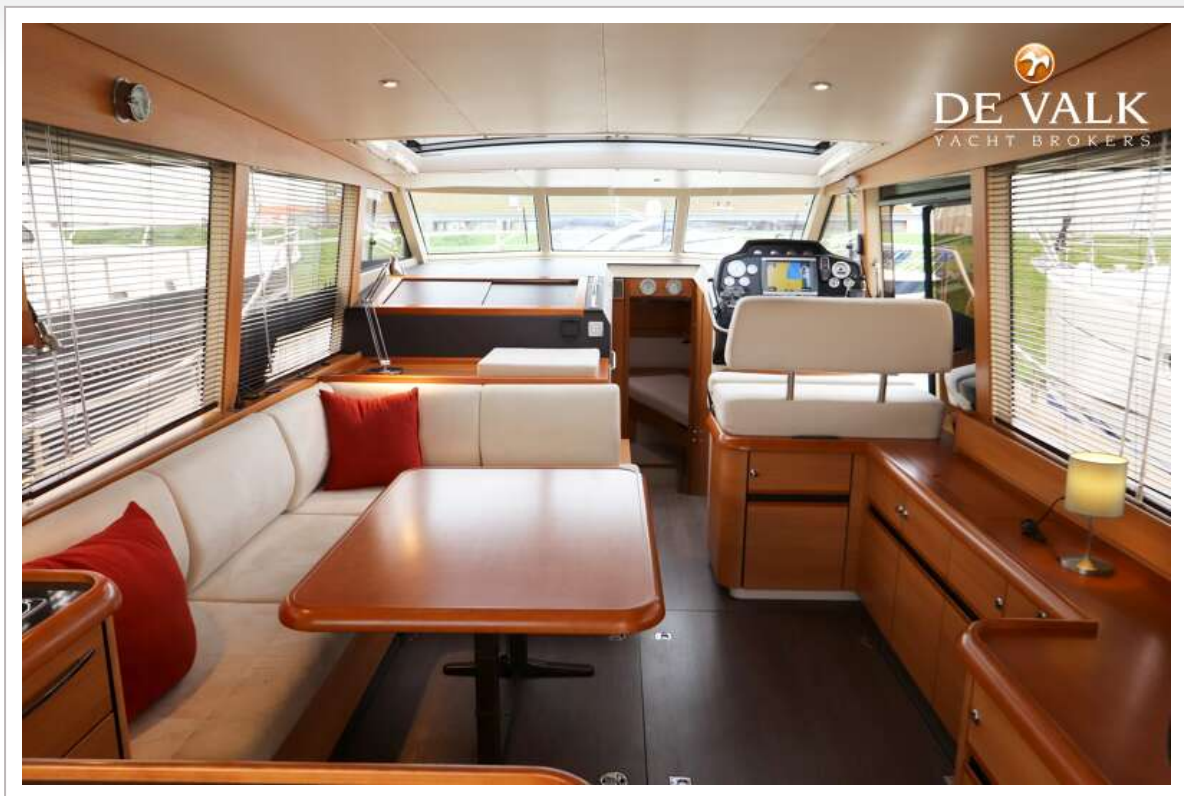
GREENLINE 40 HYBRID



GREENLINE 40 HYBRID



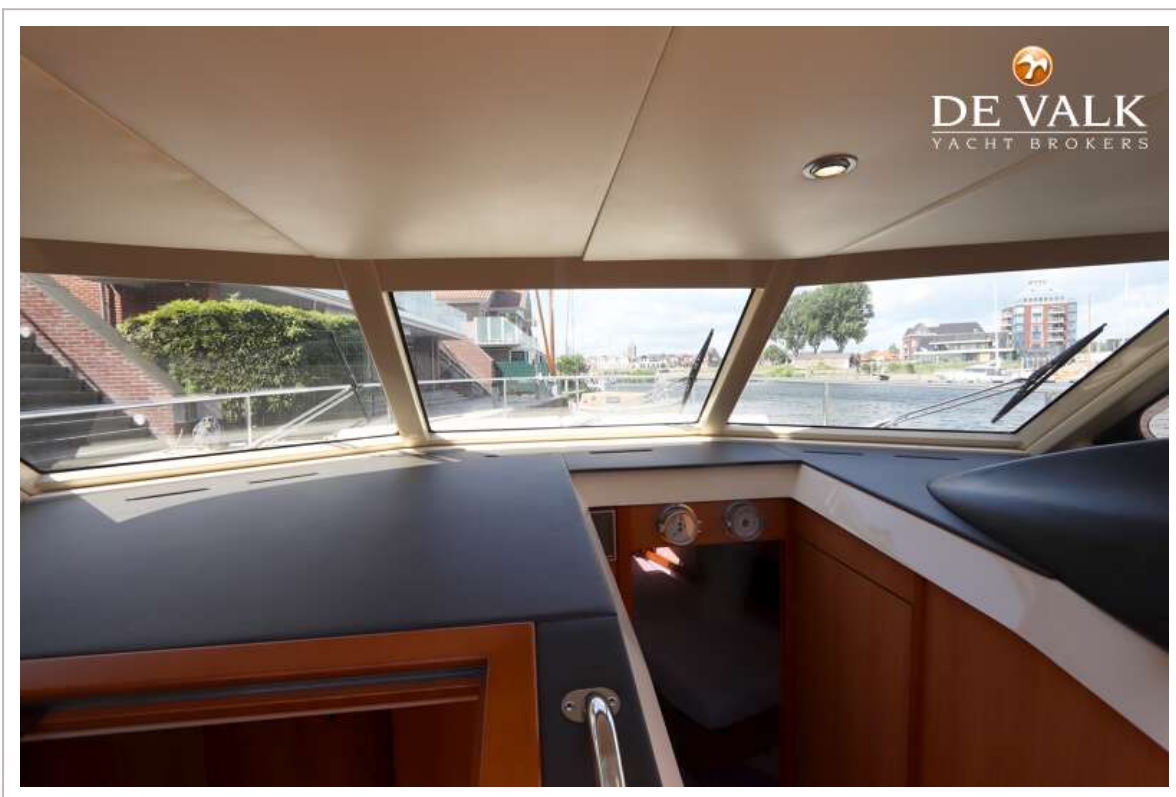
GREENLINE 40 HYBRID



GREENLINE 40 HYBRID



GREENLINE 40 HYBRID



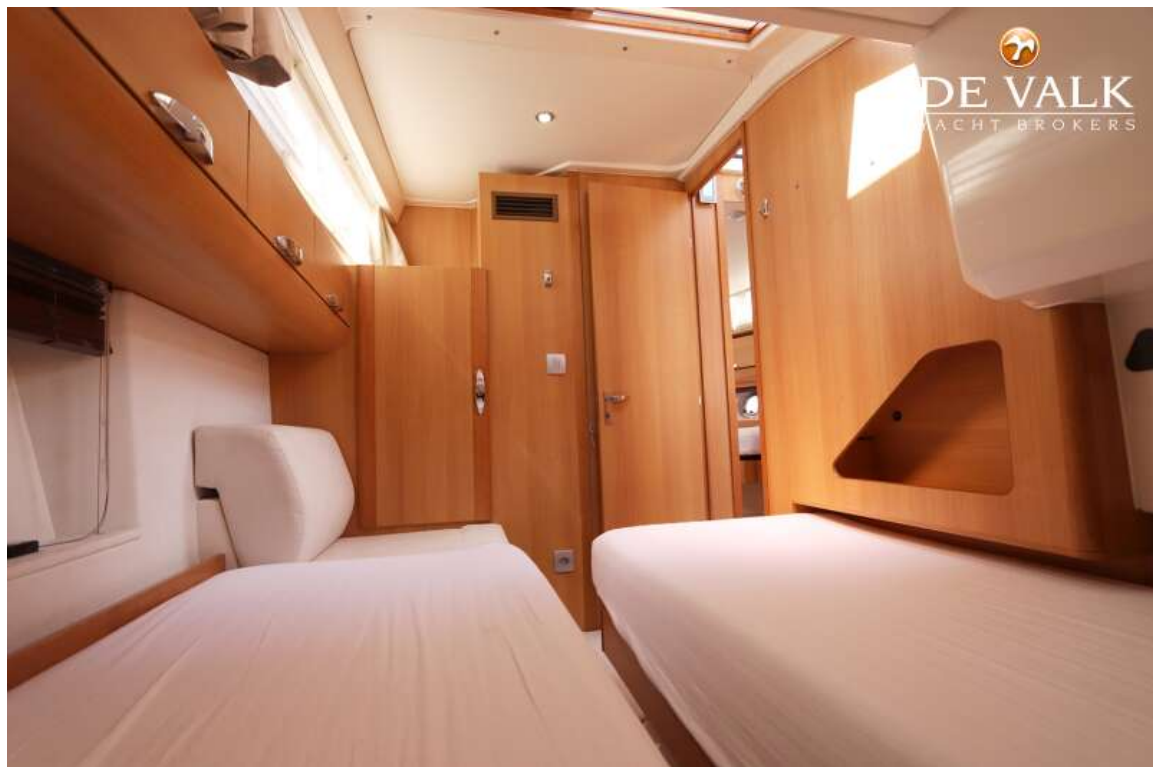
GREENLINE 40 HYBRID



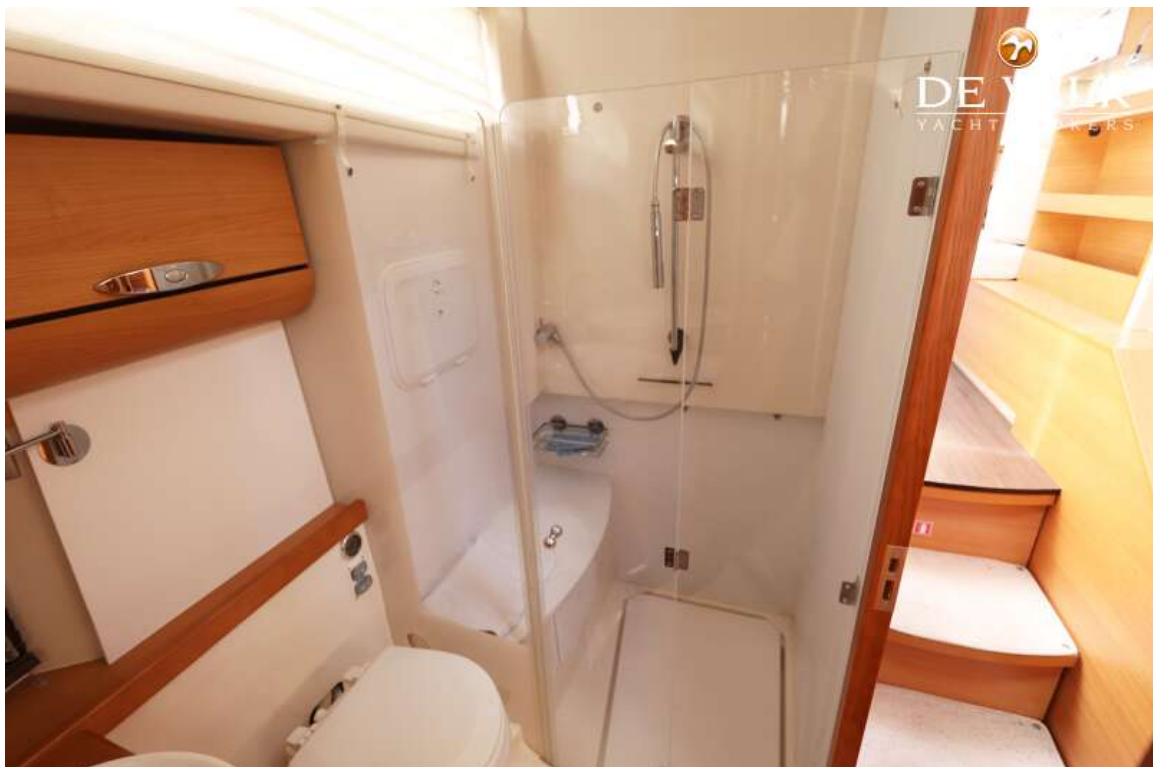
GREENLINE 40 HYBRID



GREENLINE 40 HYBRID



GREENLINE 40 HYBRID



GREENLINE 40 HYBRID



GREENLINE 40 HYBRID

