



BAYLINER 285 CIERA



BAYLINER 285 CIERA

BROKER'S COMMENTS

The Bayliner 2855 Ciera offers just what you are looking for when it comes to getting away in the weekend and holidays. She has a comfortable full beam cabin with good overnighting accommodations for 4 persons. With the Bowthruster and powerfull engine it is easy to control this yacht.

Jochem Heijermans

SPECIFICATIONS

Dimensions	8.69 x 3.00 x 0.51 (m)	Builder	Bayliner Boats
Built	2008	Cabins	1
Material	GRP	Berths	6
Engine(s)	1 x Mercruiser 350 MAG petrol	Hp/Kw	300.00 (hp), 220.50 (kw)
Asking price	sold (VAT)	Lying	elsewhere / Not at sales office

CONTACT

Sales office	De Valk Belgium	Telephone	+32 586 80 218
Address	1401 PT Nieuwpoort BE	E-mail	belgium@devalk.nl

DISCLAIMER

These particulars are given in good faith as supplied but cannot be guaranteed.



BAYLINER 285 CIERA

GENERAL

Model	BAYLINER 285 CIERA
Type	motor yacht
LOA (m)	8,69
Beam (m)	3,00
Draft (m)	0,51
Year built	2008
Builder	Bayliner Boats
Country	U.S.A.
CE norm	B
Hull material	GRP
Hull colour	black
Superstructure material	GRP
Rubbing strake	aluminum
Deck material	GRP
Deck finish	non-skid moulded in
Superstructure deck finish	non-skid moulded in
Cockpit deck finish	non-skid moulded in
Antifouling (year)	2021
Window frame	aluminium
Window material	tempered glass
Deckhatch	3x
Portholes	aluminium
Fuel tank (litre)	polyethylene 385
Level indicator (fuel tank)	yes
Freshwater tank (litre)	polyethylene 125
Blackwater tank (litre)	polyethylene 75

ACCOMMODATION

Cabins	1
Berths	6



BAYLINER 285 CIERA

Floor	carpet
Saloon	yes
Air-conditioning	reverse cycle airco
Dinette to convert into berth	yes
Opening door to cockpit	yes
Galley	yes
Countertop	plastic
Sink	stainless steel
Cooker	electric 2 burner
Microwave	yes
Fridge	With freezing compartment
Hot water system	220V + engine
Water pressure system	electrical
Owners cabin	double bed Slatted frame
Wardrobe	hanging and shelves
Bathroom	shared
Toilet	shared
Toilet system	electric
Wash basin	in the bathroom
Shower	shared
Guest cabin 1	double bed
Wardrobe	hanging and shelves

MACHINERY

No of engines	1
Make	Mercruiser
Type	350 MAG
HP	300
kW	220,50
Fuel	petrol
Maximum speed (kn)	28



BAYLINER 285 CIERA

Cruising speed (kn)	22
Engine cooling system	freshwater heat exchanger
Drive	Z-drive
Engine controls	bowden cable
Gearbox	mechanical
Bowthruster	electric Vetus
Exhaust	watercooled
Propeller type	fixed DUOPROP
Electric bilge pump	yes
Generator	wet exhaust Westerbeke (needs to be serviced)
Batteries	yes
Start battery	1x (2017)
Service battery	2x (2017)
Battery monitor	yes
Battery charger	yes
Inverter	yes
Trimtabs	yes

NAVIGATION

Compass	yes
Depth sounder	yes
Log	yes
VHF	Raymarine
Plotter/GPS	Raymarine A70
Navigation lights	yes

EQUIPMENT

Fixed windscreen	yes
Cockpit cover	Windows (2017) sides (2019)
Bimini	yes
Winter cover	yes



BAYLINER 285 CIERA

Cockpit cushions	yes
Cockpit table	yes
Bathing platform	yes
Boarding ladder	stainless steel
Deck shower	W+C
Anchor	
Windlass	electrical
Pushpit	yes
Pulpit	yes
Wiper	1x
Horn	
Fenders	yes
Mooring lines	yes
TV	yes
TV receiver	Glomex
Cockpit speakers	yes
Speakers in salon	yes
Fire extinguisher	yes



BAYLINER 285 CIERA



BAYLINER 285 CIERA



BAYLINER 285 CIERA



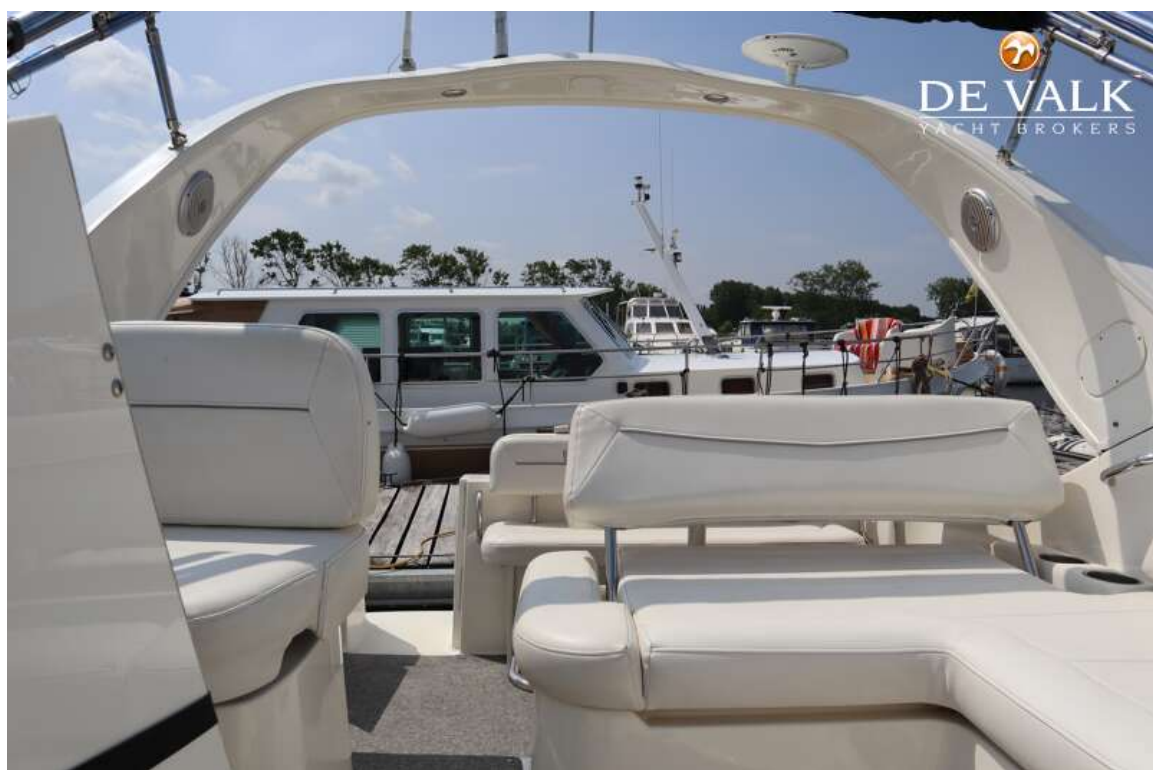
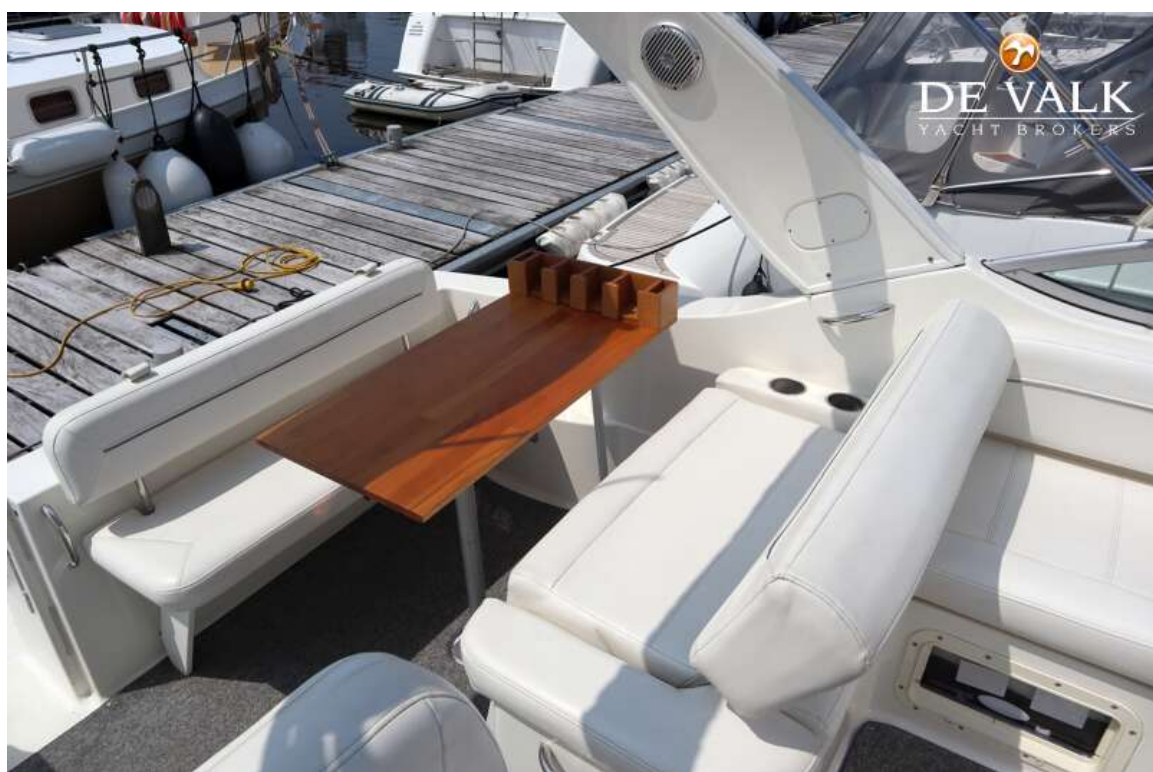
BAYLINER 285 CIERA



BAYLINER 285 CIERA



BAYLINER 285 CIERA



BAYLINER 285 CIERA



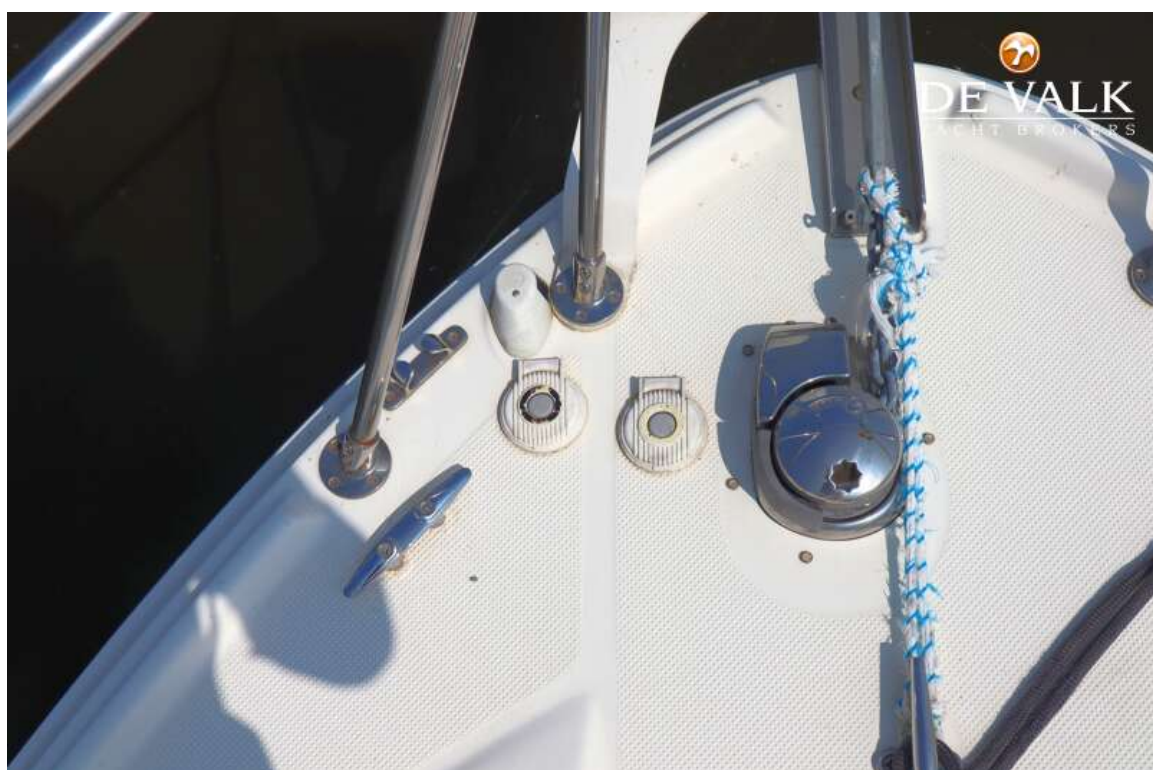
BAYLINER 285 CIERA



BAYLINER 285 CIERA



BAYLINER 285 CIERA



BAYLINER 285 CIERA



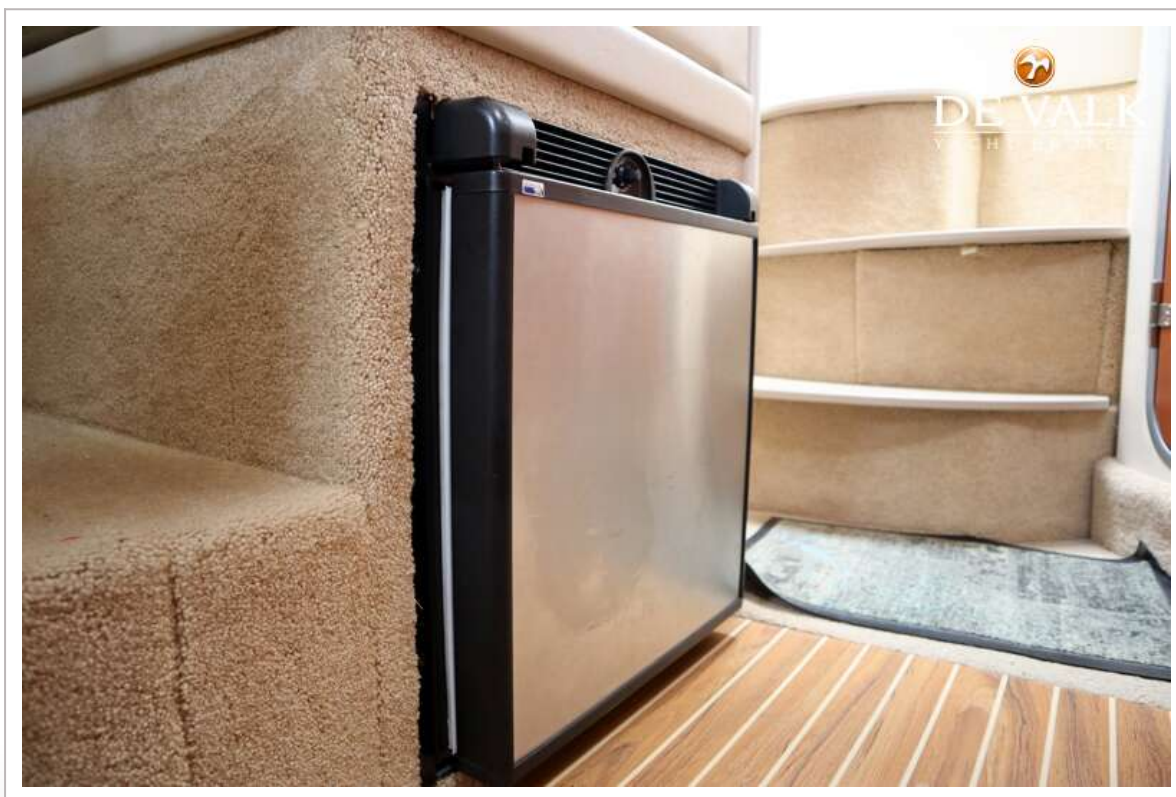
BAYLINER 285 CIERA



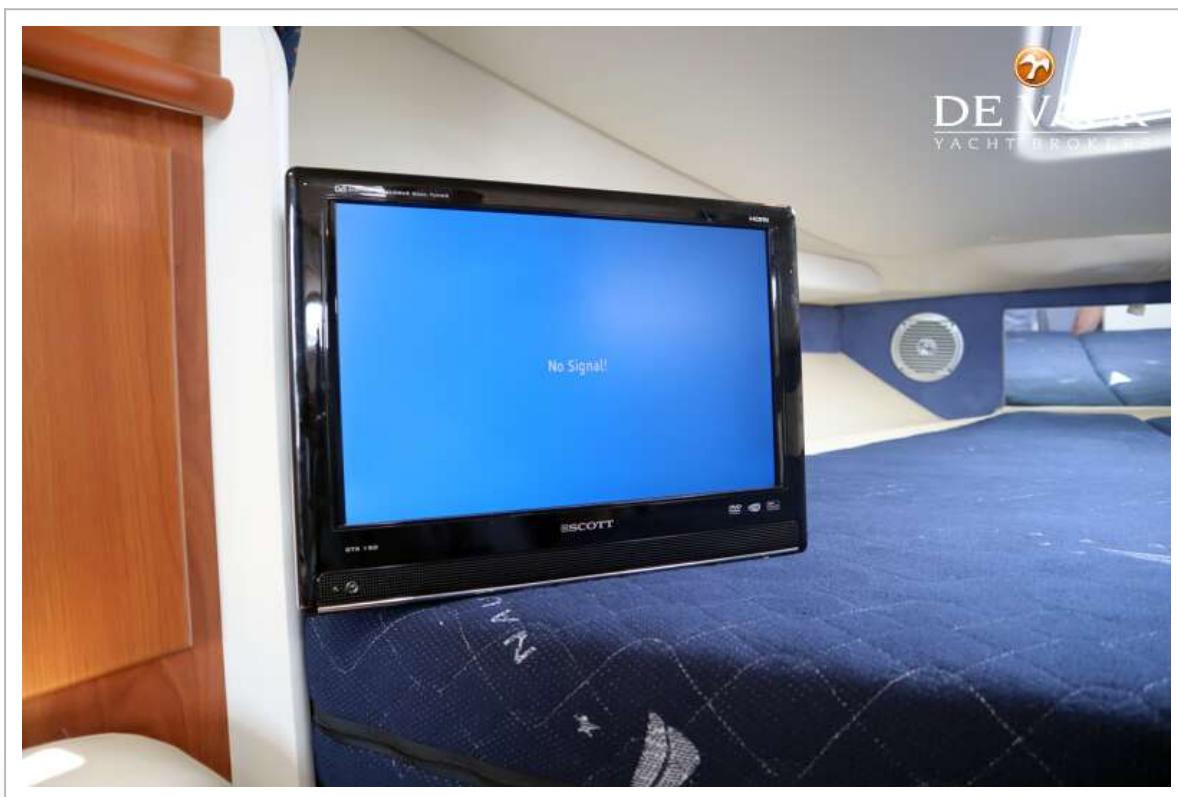
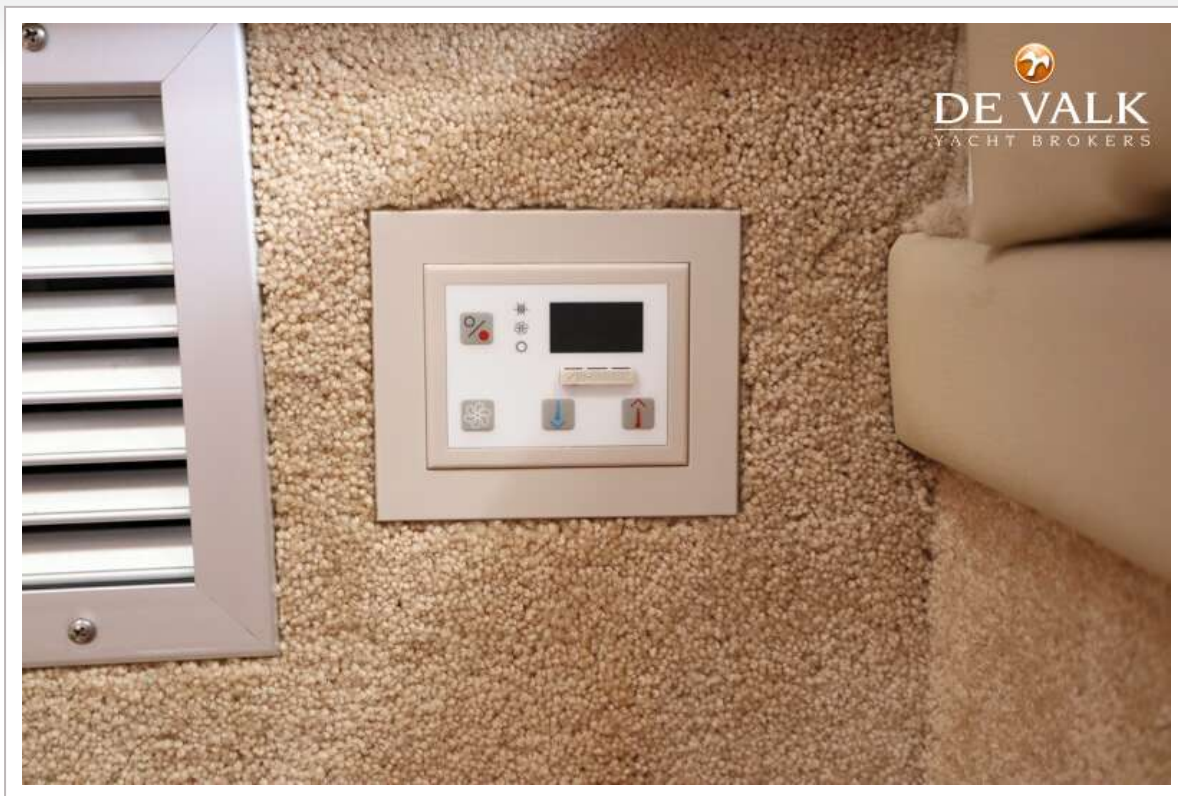
BAYLINER 285 CIERA



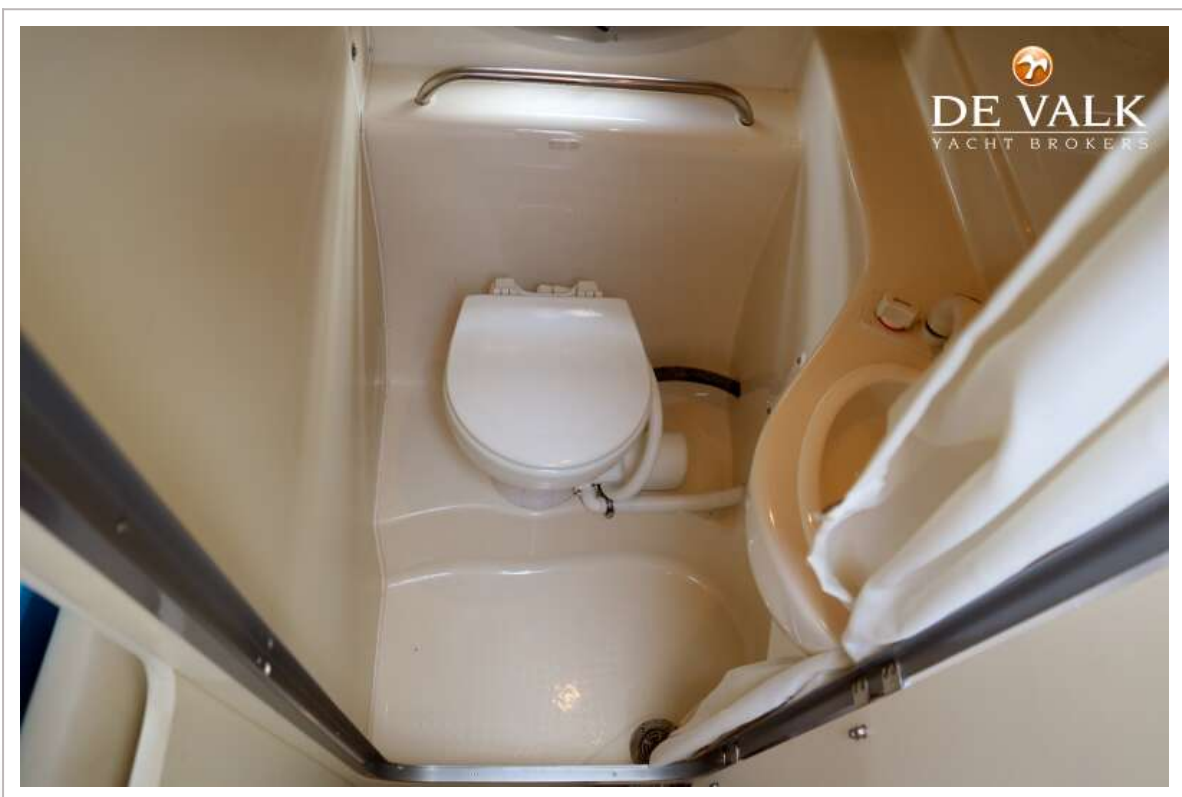
BAYLINER 285 CIERA



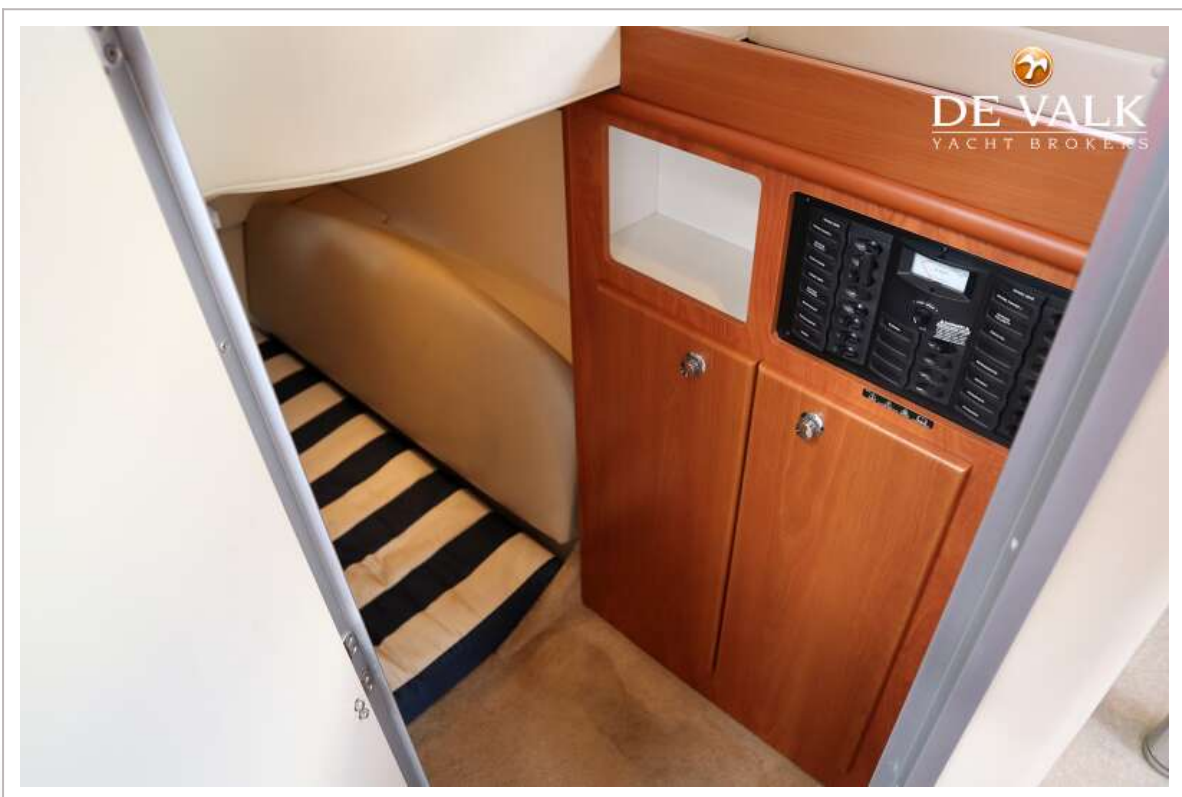
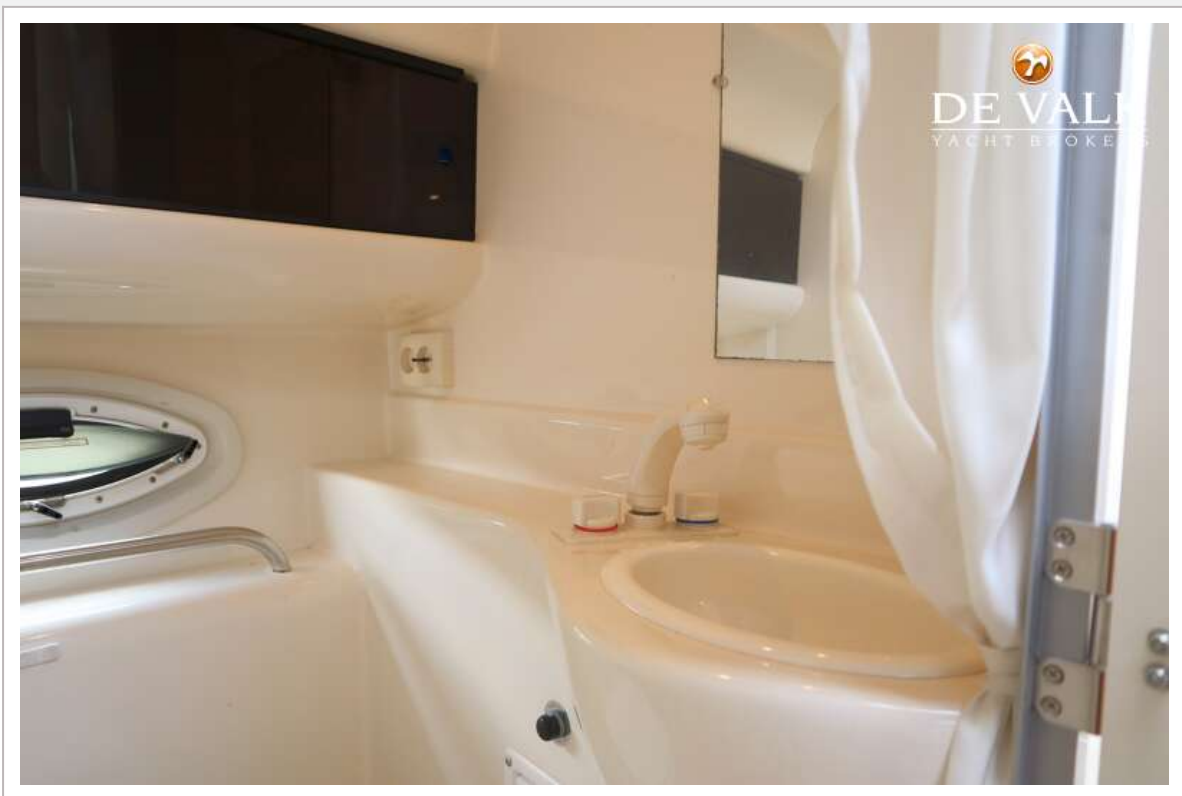
BAYLINER 285 CIERA



BAYLINER 285 CIERA



BAYLINER 285 CIERA



BAYLINER 285 CIERA



BAYLINER 285 CIERA

