



DE VALK  
YACHT BROKERS



## SEA RAY 455 SEDAN BRIDGE



DE VALK  
YACHT BROKERS

# SEA RAY 455 SEDAN BRIDGE

## BROKER'S COMMENTS

Beautifully maintained and well equipped Sea Ray 455 Sedan Bridge named "Horizon". The "Horizon" offers an extremely spacious comfortable accommodation with a reversible air conditioning, Webasto heating, Fusion audio system, in short, an ideal motor yacht for longer vacations. On the engine side this Sea Ray 455 Sedan Bridge with its two strong and reliable Cummins diesel engines also does very well, the "Horizon" can deliver very spectacular performances.

*Jochem Heijermans*

## SPECIFICATIONS

<b>Dimensions</b>	13.84 x 4.27 x 1.27 (m)	<b>Builder</b>	Sea Ray
<b>Built</b>	2005	<b>Cabins</b>	2
<b>Material</b>	GRP	<b>Berths</b>	6
<b>Engine(s)</b>	2 x Cummins 480 CE diesel	<b>Hp/Kw</b>	2 x 446.00 (hp), 327.81 (kw)
<b>Asking price</b>	€ 249.500 (VAT Paid)	<b>Lying</b>	elsewhere / Not at sales office

## CONTACT

<b>Sales office</b>	De Valk Belgium	<b>Telephone</b>	+3258680218
<b>Address</b>	1401 PT Nieuwpoort Belgium	<b>E-mail</b>	belgium@devalk.nl

## DISCLAIMER

These particulars are given in good faith as supplied but cannot be guaranteed.



# SEA RAY 455 SEDAN BRIDGE

## GENERAL

<b>Model</b>	SEA RAY 455 SEDAN BRIDGE
<b>Type</b>	motor yacht
<b>LOA (m)</b>	13,84
<b>Beam (m)</b>	4,27
<b>Draft (m)</b>	1,27
<b>Headroom (m)</b>	2,00
<b>Year built</b>	2005
<b>Builder</b>	Sea Ray
<b>Country</b>	U.S.A.
<b>Displacement (t)</b>	14
<b>CE norm</b>	B
<b>Hull material</b>	GRP
<b>Hull colour</b>	blue
<b>Hull shape</b>	deep-V
<b>Superstructure material</b>	GRP
<b>Rubbing strake</b>	aluminum
<b>Deck material</b>	GRP
<b>Deck finish</b>	non-skid moulded in
<b>Superstructure deck finish</b>	non-skid moulded in
<b>Cockpit deck finish</b>	non-skid moulded in
<b>Window frame</b>	aluminium
<b>Window material</b>	tempered glass
<b>Deckhatch</b>	yes
<b>Portholes</b>	aluminium
<b>Flybridge</b>	yes
<b>Flybridge cockpit cover</b>	yes
<b>Flybridge suncover</b>	yes
<b>Radar arch</b>	non collapsible
<b>Fuel tank (litre)</b>	aluminium 660
<b>Fuel tank 2 (litre)</b>	aluminium 660



# SEA RAY 455 SEDAN BRIDGE

Level indicator (fuel tank)	yes
Freshwater tank (litre)	450
Level indicator (freshwater)	yes
Wheel steering	hydraulic
Flybridge helm position	hydraulic

## ACCOMMODATION

Cabins	2
Berths	6
Floor	carpet
Open cockpit	yes
Saloon	yes
Headroom saloon (m)	2.00
Heating	diesel ducted hot air Webasto Airtop EVO
Air-conditioning	reverse cycle airco
Dinette to convert into berth	Folding sofa
Sliding door to cockpit	yes
Galley	yes
Countertop	granite
Sink	GRP
Cooker	ceramic
Extractor	yes
Microwave/oven combi	LG
Fridge	yes
Freezer	yes
Hot water system	220V + engine
Water pressure system	electrical
Coffee maker	yes
Owners cabin	French bed
Bed length (m)	2.00 x 1.40
Wardrobe	hanging/drawers/shelves



# SEA RAY 455 SEDAN BRIDGE

<b>Bathroom</b>	en suite
<b>Toilet</b>	en suite
<b>Toilet system</b>	electric
<b>Wash basin</b>	in the bathroom
<b>Shower</b>	en suite
<b>Guest cabin 1</b>	twin single (or double)
<b>Wardrobe</b>	drawers and shelves

## MACHINERY

<b>No of engines</b>	2
<b>Make</b>	Cummins
<b>Type</b>	480 CE
<b>HP</b>	446
<b>kW</b>	327,81
<b>Fuel</b>	diesel
<b>Year installed</b>	2005
<b>Maximum speed (kn)</b>	22
<b>Cruising speed (kn)</b>	27
<b>Engine hours</b>	575
<b>Engine cooling system</b>	freshwater heat exchanger
<b>Drive</b>	shaft
<b>Engine controls</b>	electrical
<b>Gearbox</b>	hydraulic ZF280 - 1 A
<b>Bowthruster</b>	electric Vetus
<b>Sternthruster</b>	Vetus
<b>Exhaust</b>	watercooled
<b>Propeller type</b>	fixed
<b>Propeller shaft material</b>	stainless steel
<b>Shaft lubrication</b>	water
<b>Electric bilge pump</b>	yes
<b>Bilge alarm</b>	yes



# SEA RAY 455 SEDAN BRIDGE

Electrical installation	12V/220V
Generator	silent separator Onan Marine 6Kva
Batteries	yes
Start battery	2x
Service battery	3x
Battery monitor	yes
Battery charger/inverter	Victron 12V/3000W/120Ah
Shorepower	with cable
Trimtabs	yes

## NAVIGATION

Compass	yes
Compass on flybridge	yes
Multi control display	Mercury Smartcraft
Depth sounder	Mercury Smartcraft
Log	yes
Repeater	Dubbel on flybridge
VHF	Raymarine
Autopilot	Raymarine ST7001 Smart Pilot
Rudder angle indicator	Raymarine ST7001 Smart Pilot
Radar/GPS/plotter	Raymarine E80
Camera	Engineroom, flybridge, aftedeck
Navigation lights	yes
Searchlight	yes

## EQUIPMENT

Fixed windscreen	yes
Bimini	yes
Window cover	yes
Cockpit cushions	yes
Cockpit table	yes



# SEA RAY 455 SEDAN BRIDGE

Cockpit chairs	yes
Bathing platform	yes
Boarding ladder	stainless steel
Transom door	yes
Deck shower	W+C
Anchor	
Windlass	electrical
Capstan	yes
Davits	stainless steel
Davits controls	manual
Sea railing	stainless steel
Grab rail (superstructure)	stainless steel
Pushpit	yes
Pulpit	yes
Wiper	2x
Horn	
Radar reflector	yes
Fenders	yes
Mooring lines	yes
Alarm system	yes
TV	Samsung + ownerscabin
TV receiver	Glomex
iPod connection	yes
Surround Sound System	Fusion
Sub-woofer	yes
Cockpit speakers	yes
Speakers in salon	yes
Speakers in cabin	yes
Clock - barometer	yes
Fire extinguisher	yes



# SEA RAY 455 SEDAN BRIDGE





# SEA RAY 455 SEDAN BRIDGE



# SEA RAY 455 SEDAN BRIDGE



# SEA RAY 455 SEDAN BRIDGE



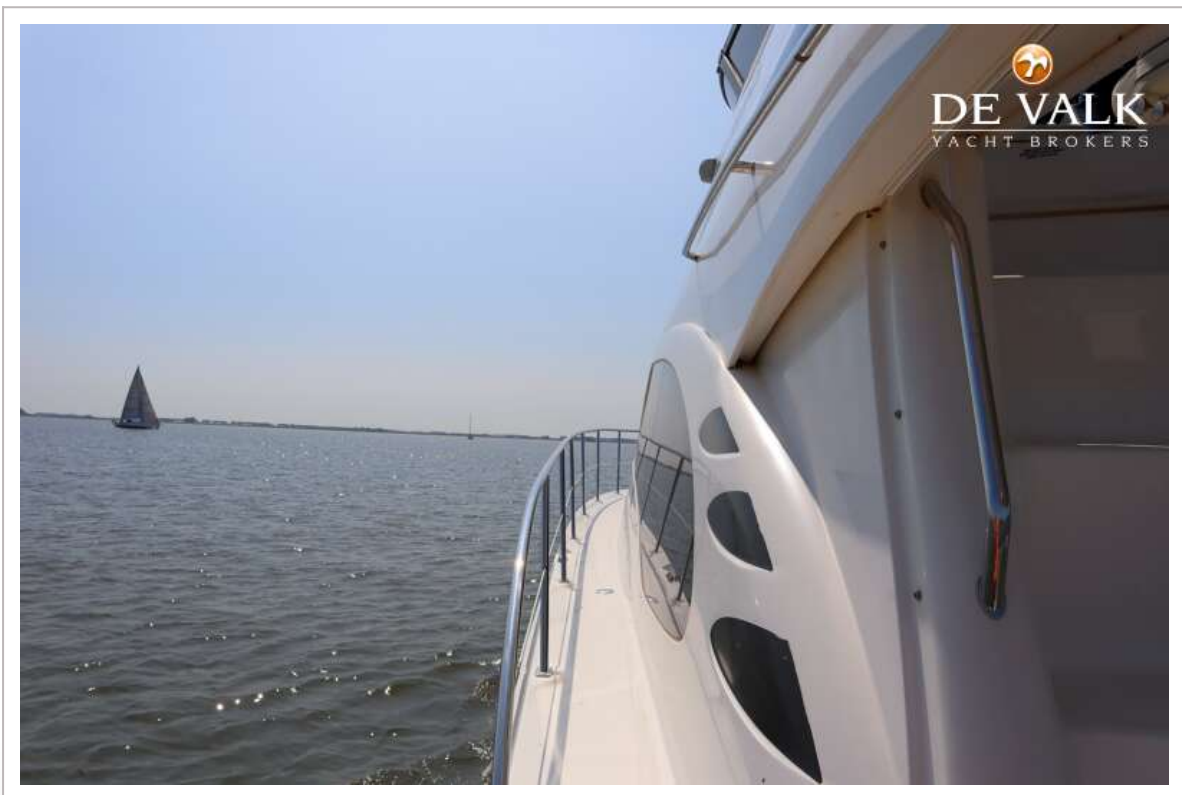
# SEA RAY 455 SEDAN BRIDGE



# SEA RAY 455 SEDAN BRIDGE



# SEA RAY 455 SEDAN BRIDGE



# SEA RAY 455 SEDAN BRIDGE



# SEA RAY 455 SEDAN BRIDGE





# SEA RAY 455 SEDAN BRIDGE



# SEA RAY 455 SEDAN BRIDGE



# SEA RAY 455 SEDAN BRIDGE



# SEA RAY 455 SEDAN BRIDGE



# SEA RAY 455 SEDAN BRIDGE



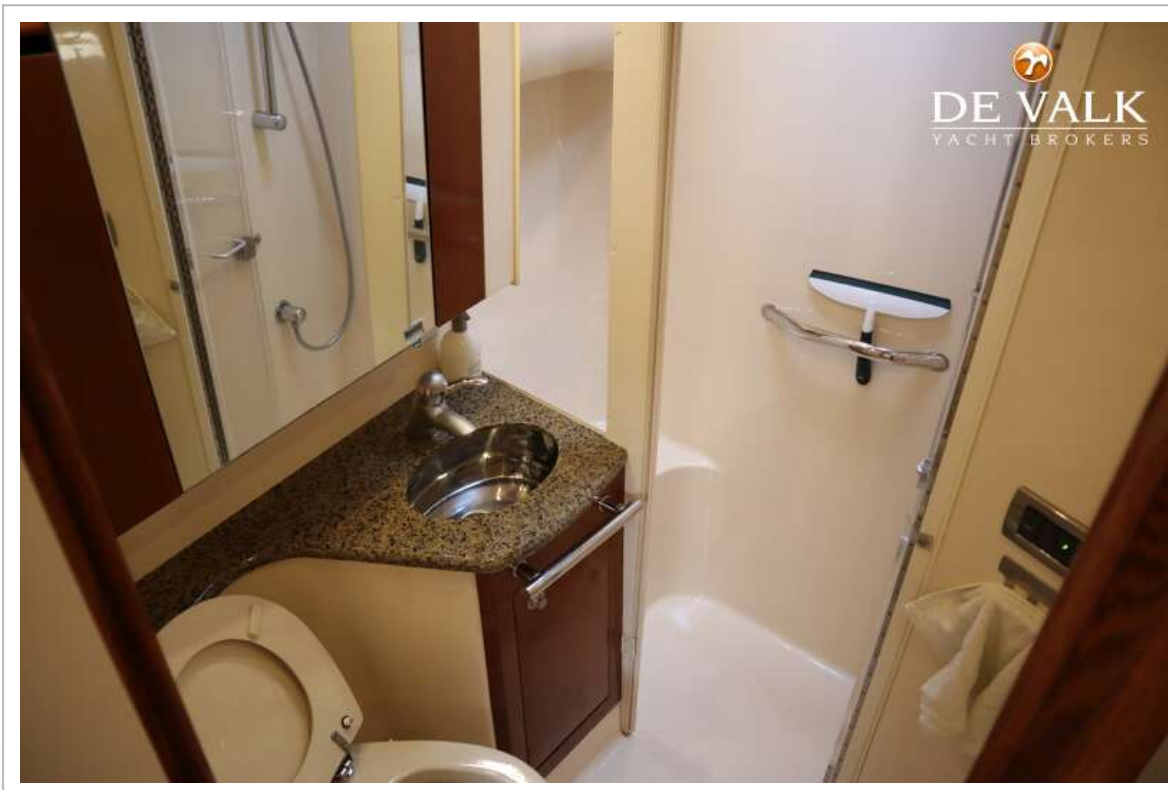
# SEA RAY 455 SEDAN BRIDGE



# SEA RAY 455 SEDAN BRIDGE

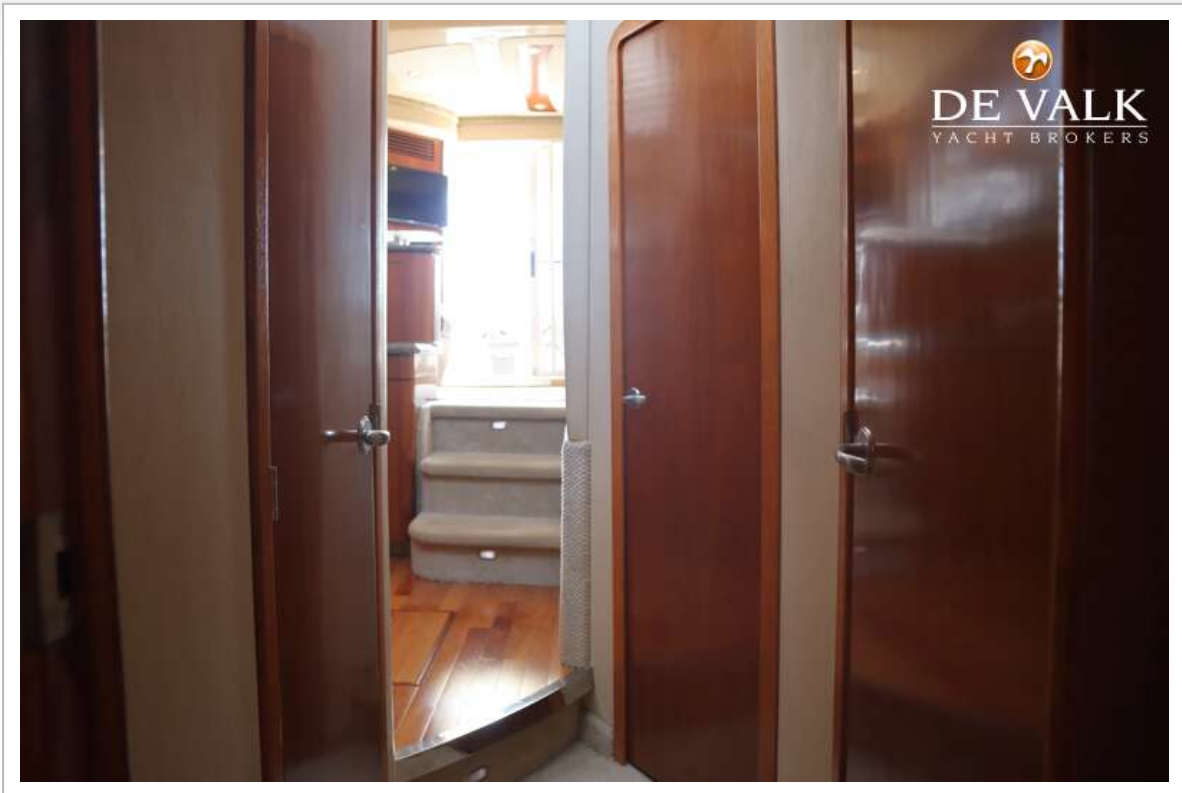


# SEA RAY 455 SEDAN BRIDGE

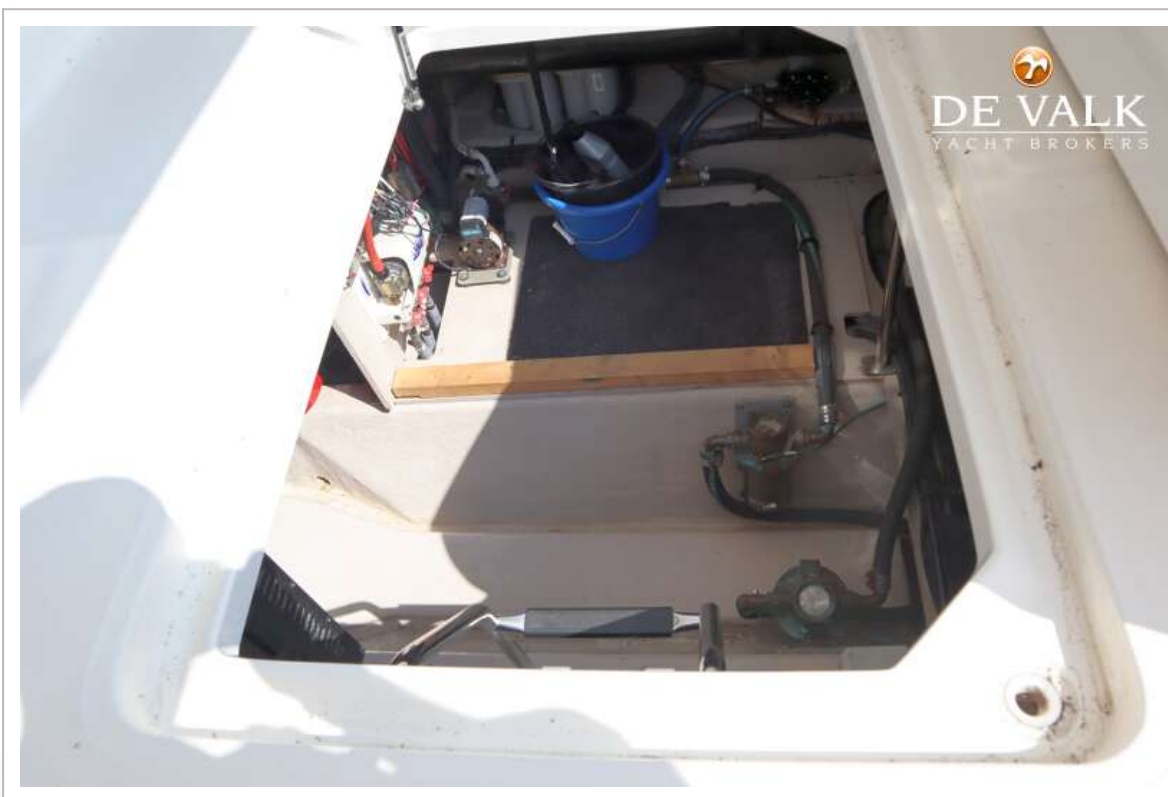




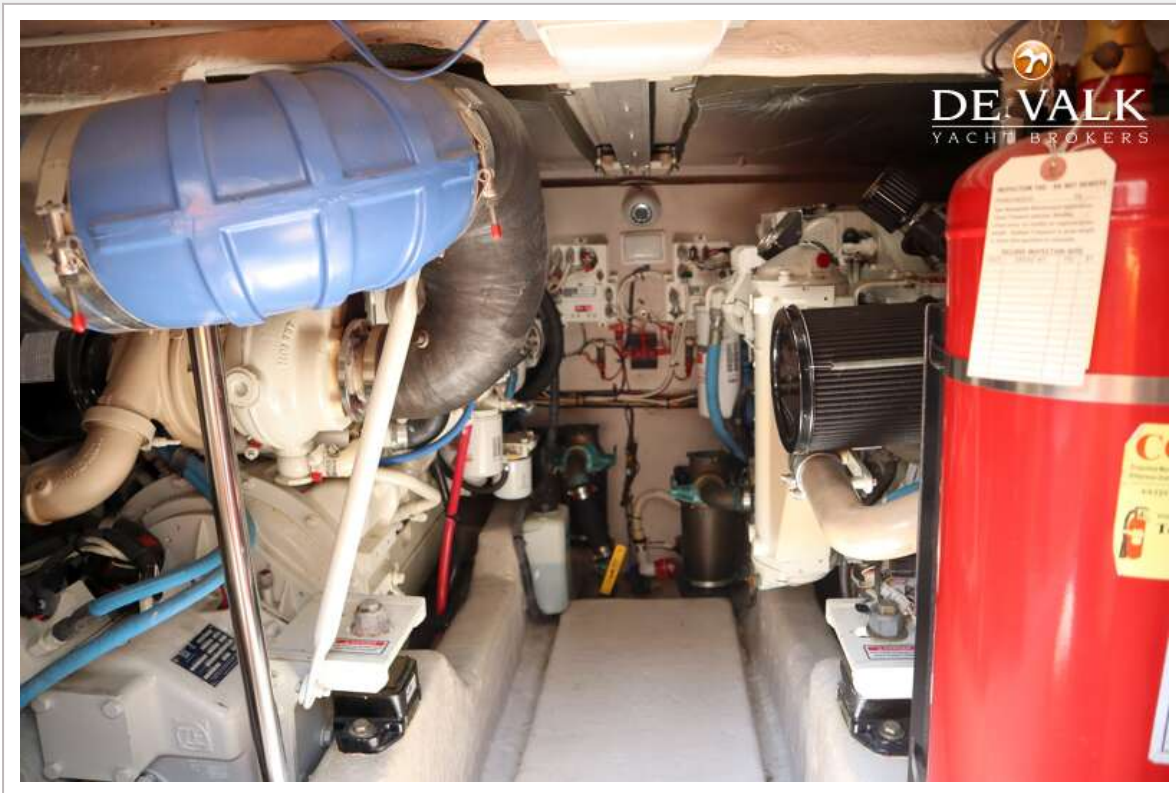
# SEA RAY 455 SEDAN BRIDGE



# SEA RAY 455 SEDAN BRIDGE



# SEA RAY 455 SEDAN BRIDGE



# SEA RAY 455 SEDAN BRIDGE



# SEA RAY 455 SEDAN BRIDGE

