



DE VALK
YACHT BROKERS



BENETEAU OCEANIS 50



DE VALK
YACHT BROKERS

BENETEAU OCEANIS 50

BROKER'S COMMENTS

This Beneteau Oceanis 50 is being sold by her first and private owners and is the ideal yacht for comfortable family cruising or even comfortable onboard living. She has a large cockpit with twin steering wheels and lot's of seating space. Below decks this Beneteau Oceanis 50 has a spacious, light and comfortable interior with three cabins, two bathrooms and good stowage space. This Beneteau Oceanis 50 has been kept and maintained in an excellent condition. She has been stored inside every winter and all the maintenance has been done here in Sint Annaland, where she is now ready for a visit!

Joris van de Rijt

SPECIFICATIONS

Dimensions	15.10 x 4.49 x 2.10 (m)	Builder	Chantiers Beneteau
Built	2007	Cabins	3
Material	GRP	Berths	6
Engine(s)	1 x Yanmar 4JH4-HTE diesel	Hp/Kw	110.00 (hp), 80.96 (kw)
Asking price	sold (VAT)	Lying	at sales office

CONTACT

Sales office	De Valk Sint Annaland B.V.	Telephone	+31 (0)166 601 000
Address	Koelhuisweg 4 4697 RM Sint Annaland NL	E-mail	sintannaland@devalk.nl

DISCLAIMER

These particulars are given in good faith as supplied but cannot be guaranteed.



GENERAL

Model	BENETEAU OCEANIS 50
Type	sailing yacht
LOA (m)	15,10
LWL (m)	13,30
Beam (m)	4,49
Draft (m)	2,10
Air draft (m)	21,30
Headroom (m)	2,00
Year built	2007
Builder	Chantiers Beneteau
Country	France
Designer	Berret Racoupeau
Displacement (t)	12,9
Ballast (tonnes)	cast iron 3,7
CE norm	A
Hull material	GRP
Hull colour	blue Professionally painted in 2008
Hull shape	round-bilged
Keel type	fin keel
Superstructure material	GRP
Rubbing strake	stainless steel
Deck material	GRP
Deck finish	teak
Superstructure deck finish	teak
Cockpit deck finish	teak
Window frame	aluminium
Window material	perspex
Deckhatch	6 x
Fuel tank (litre)	polyethylene 235
Level indicator (fuel tank)	yes



Freshwater tank (litre)	polyethylene 565 in two tanks
Level indicator (freshwater)	yes
Blackwater tank (litre)	polyethylene 2 x 73
Wheel steering	cable steering With covers
Emergency tiller	yes

ACCOMMODATION

Cabins	3
Berths	6
Interior	mahogany
Floor	woodprint
Headroom saloon (m)	2,00
Heating	diesel ducted hot air Eberspacher D8LC
Chart table	yes
Dinette	yes
Galley	yes
Countertop	plastic
Sink	stainless steel 2 x
Cooker	calor gas Eno 4 burner
Oven	Eno
Microwave	Eno
Fridge	Vitrifigo 133L with fridge + Vitrifigo 100L
Hot water system	220V + engine
Water pressure system	electrical
Owners cabin	French bed With Neptune mattresses
Bed length (m)	2,00 x 1,50
Wardrobe	hanging/drawers/shelves
Bathroom	en suite
Toilet	en suite
Toilet system	electric Jabsco
Wash basin	in the bathroom



Shower	en suite
Guest cabin 1	double bed With Neptune mattresses and extra storage
Bed length (m)	2,00 x 1,50
Wardrobe	hanging and shelves
Bathroom	en suite
Toilet	en suite
Toilet system	electric Jabsco
Wash basin	in the bathroom
Shower	en suite
Guest cabin 2	double bed With Neptune mattresses
Bed length (m)	2,00 x 1,50
Wardrobe	hanging and shelves

MACHINERY

No of engines	1
Make	Yanmar
Type	4JH4-HTE
HP	110
kW	80,96
Fuel	diesel
Year installed	2007
Maximum speed (kn)	8
Cruising speed (kn)	6
Engine hours	Defect
Engine cooling system	freshwater heat exchanger
Drive	shaft
Engine controls	bowden cable
Gearbox	mechanical
Bowthruster	electric Max power SP100
Propeller type	feathering Maxprop
Propeller blades	3



Propeller shaft material	stainless steel
Shaft lubrication	water
Manual bilge pump	yes
Electric bilge pump	yes
Electrical installation	12V / 230V
Start battery	AGM 95 ah (2014)
Service battery	(2014)
Bowthruster battery	yes
Battery monitor	Vdo
Battery charger	Mastervolt chargemaster 12/100
Inverter	Victron
Shorepower	with cable
Extra info	Extra alternator on engine

NAVIGATION

Compass	2 x plastimo
Depth sounder/log	Raymarine ST 60 tridata + ST 60 graphic
Windset	Raymarine ST 60
VHF	Raymarine Ray 240e with cockpit connection
Autopilot	Raymarine ST 6002 with remote
Rudder angle indicator	On autopilot
Radar/GPS/plotter	2 x raymarine E80
Electronic chart(s)	yes
Navigation lights	yes

EQUIPMENT

Sprayhood	yes
Cockpit cover	yes
Cockpit cushions	yes
Cockpit table	With cover
Bathing platform	yes



Boarding ladder	stainless steel
Transom door	yes
Deck shower	yes
Anchor	Delta
Anchor chain	yes
Chain counter	Quick
Windlass	electrical Lewmar 2000 watt (2020)
Outboard support	yes
Deck crane	manual
Sea railing	wire
Grab rail (superstructure)	teak
Railing side opening gates	2 x
Life raft (pers)	container Plastimo offshore 6 (next survey 03-2022)
Lifebuoy	yes
Safety lines on deck	yes
Radar reflector	yes
Fenders	yes
Mooring lines	yes
TV	Samsung
Radio-cd player	Blaupunkt
Cockpit speakers	yes
Speakers in salon	yes
Clock - barometer	yes
Fire extinguisher	3 x (2016)

RIGGING

Rigging	fractional
Standing rigging	wire (2007)
Brand mast	Sparcraft
Material mast	aluminium
Spreaders	2 sets



Mainsail	Elvstrom Hydranet 380 (2016)
Stoway mast	yes
Genoa II	Elvstrom Hydranet 380 (2016)
Genoa furler	Facnor Is 290
Gennaker	With squeezer (Little used - 2007)
Reefing System	main in-mast furling
Backstay adjuster	mechanical
Boomvang	gasspring
Genoa sheetwinches	2 x harken 53st electric
Halyard winches	1 x harken 44st + 1 x harken 44st electric



BENETEAU OCEANIS 50



BENETEAU OCEANIS 50



BENETEAU OCEANIS 50



BENETEAU OCEANIS 50



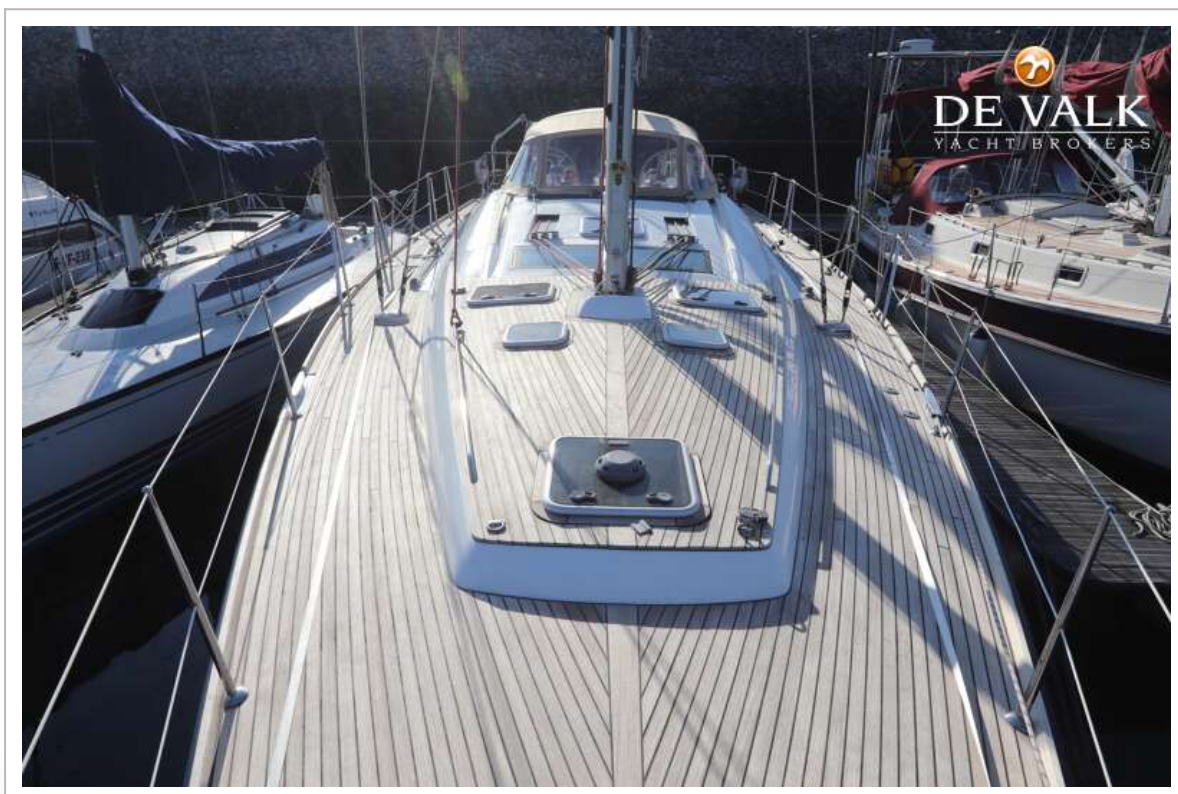
BENETEAU OCEANIS 50



BENETEAU OCEANIS 50



BENETEAU OCEANIS 50



BENETEAU OCEANIS 50



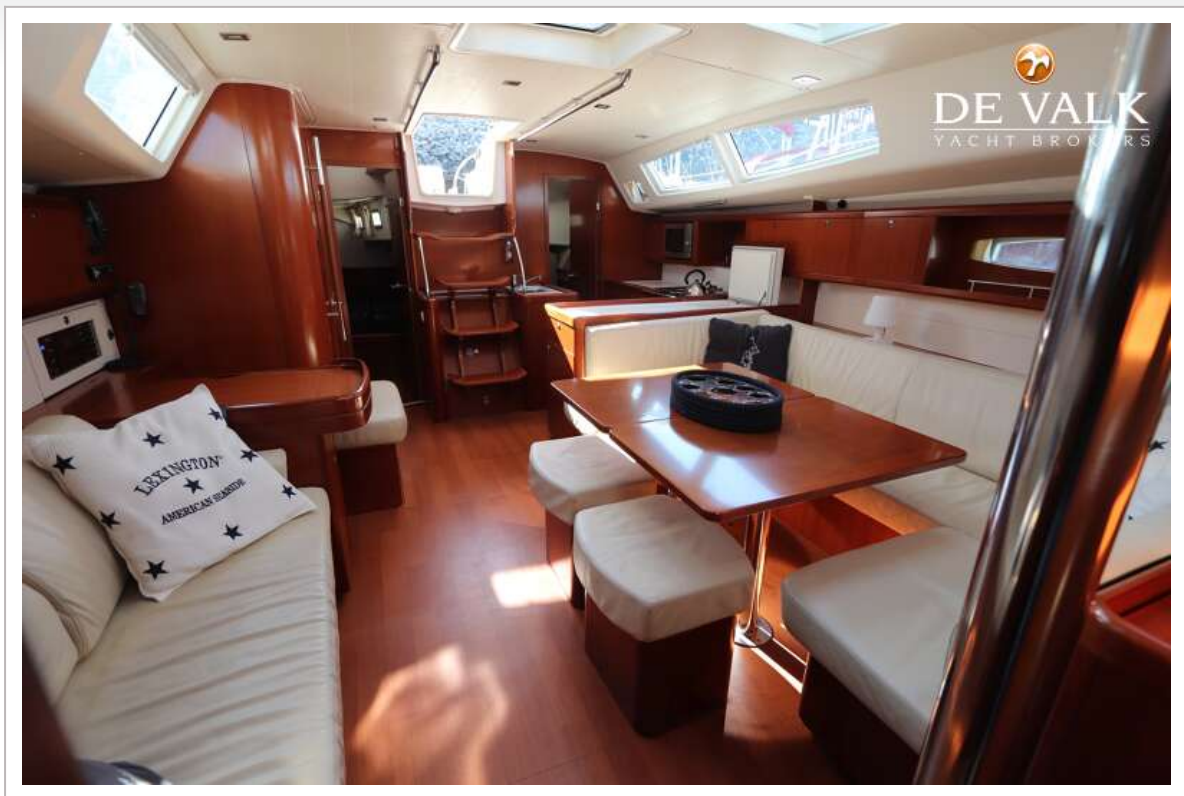
BENETEAU OCEANIS 50



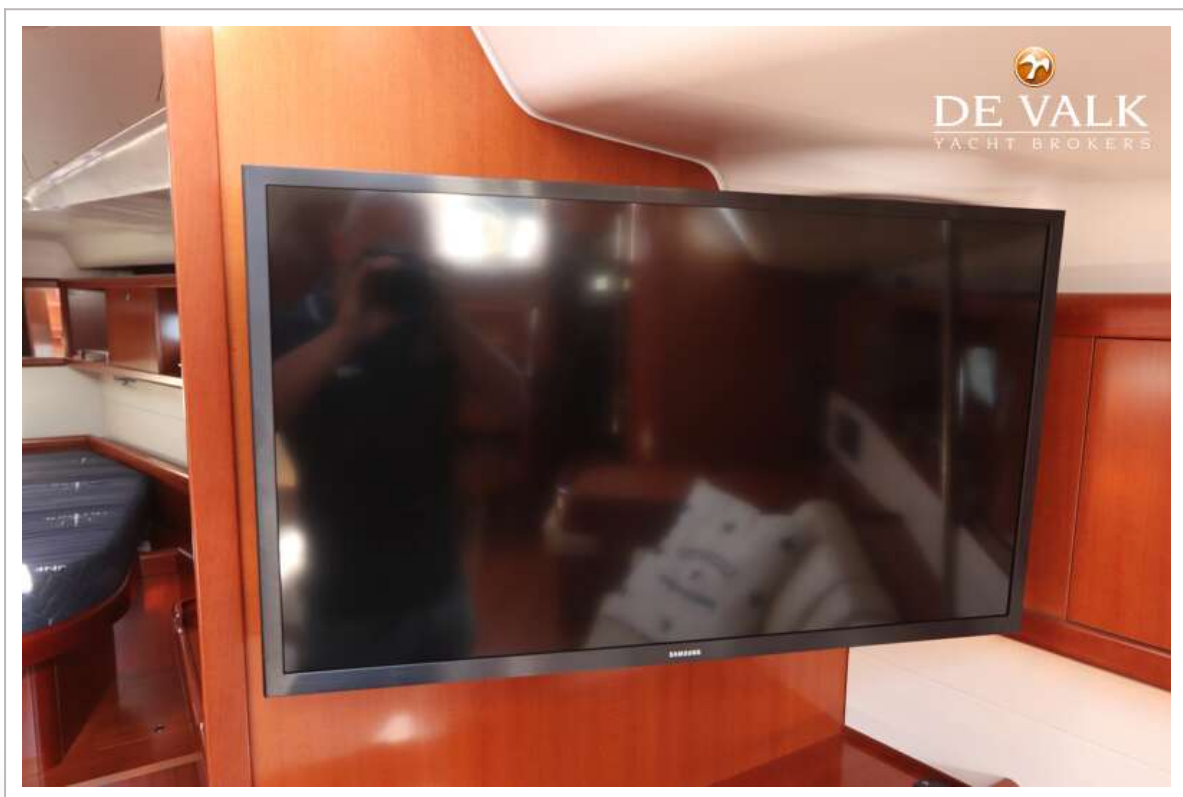
BENETEAU OCEANIS 50



BENETEAU OCEANIS 50



BENETEAU OCEANIS 50



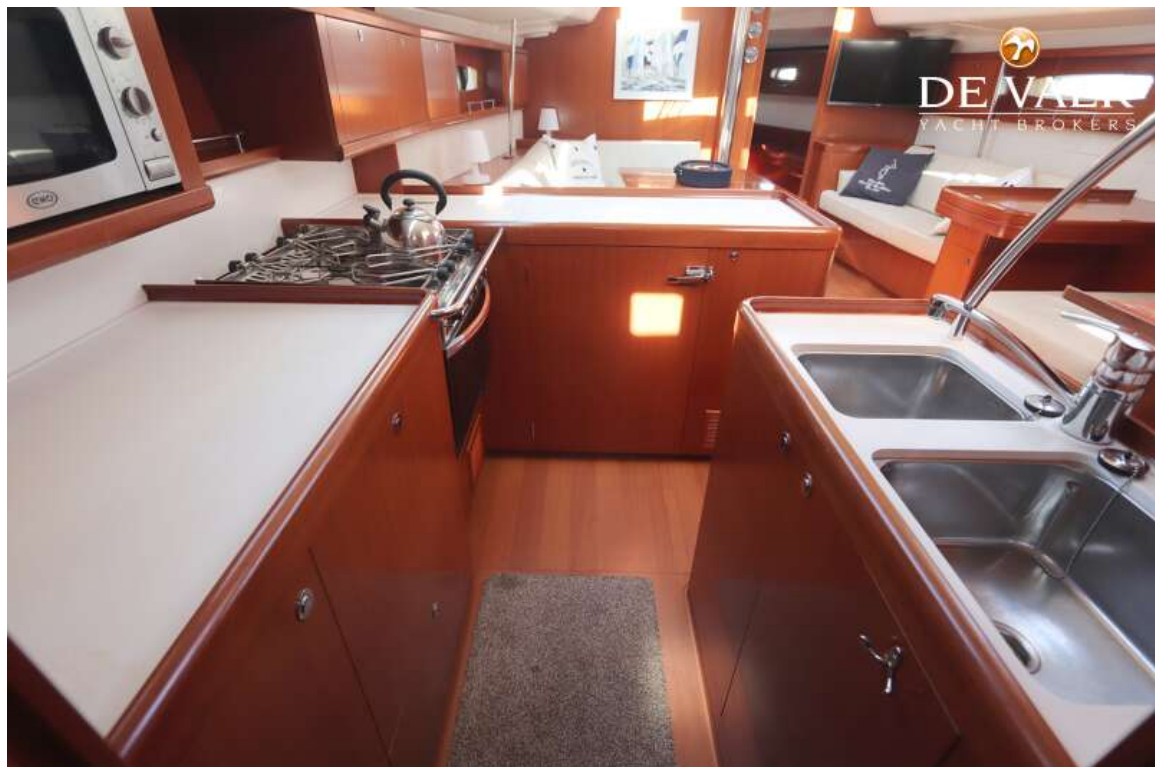
BENETEAU OCEANIS 50



BENETEAU OCEANIS 50



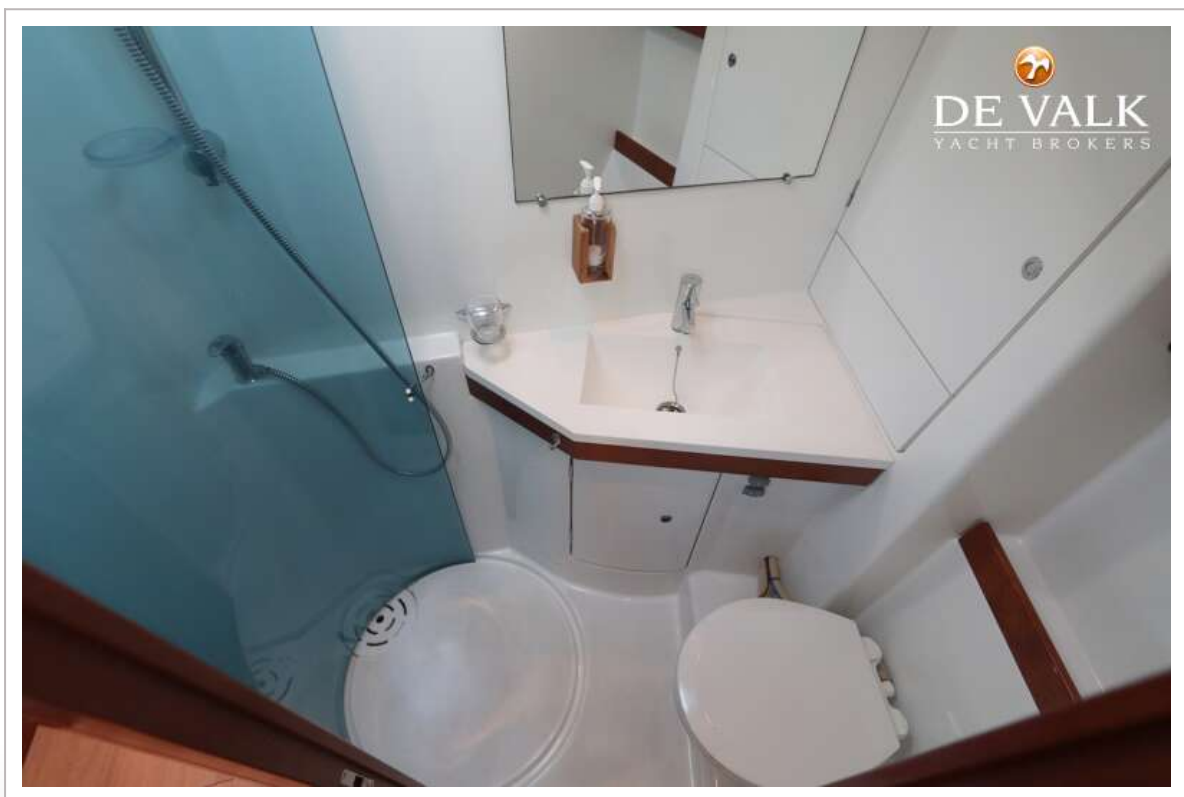
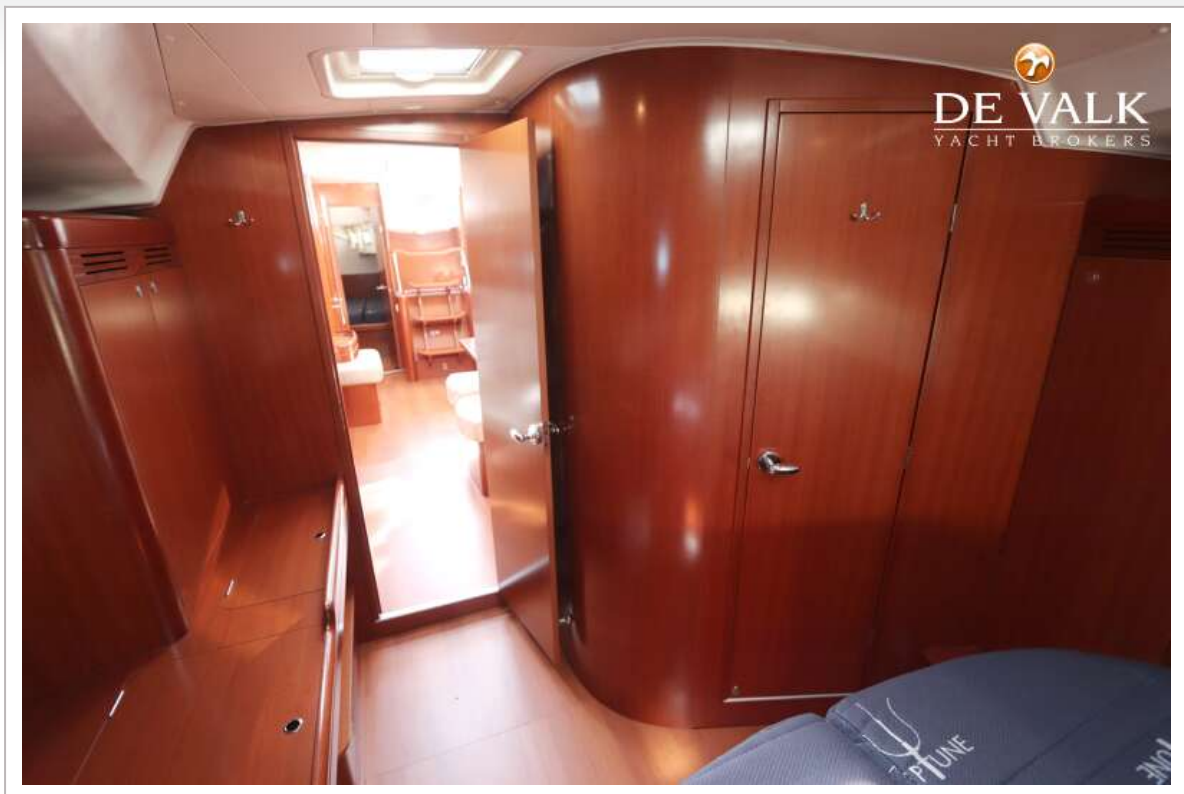
BENETEAU OCEANIS 50



BENETEAU OCEANIS 50



BENETEAU OCEANIS 50



BENETEAU OCEANIS 50



BENETEAU OCEANIS 50

