



CHEOY LEE 63 LRMS

BROKER'S COMMENTS

The Cheoy Lee 63 LRMS is an impressive performer with speed and agility under both sail and power. She was in a heated hall from 2015 until 2017 for an extensive refit. The engine room was re-arranged and the caterpillars were lifted and overhauled. New generators, airco units and heating and complete new Simrad navigation system. Masts taken down and resprayed, new standing rigging and sails. New electric system with new control panel, Victron Quattro, new batteries etc.etc etc The perfect boat for long distance cruising in comfort and safety.

Reinoud Bicker Caarten

SPECIFICATIONS

Dimensions	19.32 x 5.64 x 1.98 (m)	Builder	Cheoy Lee shipyard
Built	1984	Cabins	4
Material	GRP	Berths	8
Engine(s)	2 x Caterpillar 3208	Hp/Kw	2 x 210.00 (hp), 154.35 (kw)
Asking price	sold (VAT)	Lying	at sales office

CONTACT

Sales office	De Valk Portugal	Telephone	+351 308 812321
Address	Edifício Administrativo - Ponta da Areia 8500 - 345 Portimão PT	E-mail	portugal@devalk.nl

DISCLAIMER

These particulars are given in good faith as supplied but cannot be guaranteed.



GENERAL

Model	CHEOY LEE 63 LRMS
Type	sailing yacht
LOA (m)	19,32
LWL (m)	16,46
Beam (m)	5,64
Draft (m)	1,98
Air draft (m)	22,40
Year built	1984
Builder	Cheoy Lee shipyard
Country	Hong Kong
Designer	Seaton and Neville
Displacement (t)	49,9
Ballast (tonnes)	cast iron 13,6
CE norm	A
Hull material	GRP
Hull colour	blue
Hull shape	yes
Keel type	fin keel
Superstructure material	GRP
Rubbing strake	yes
Deck material	GRP
Deck finish	teak New 2017
Cockpit deck finish	teak
Antifouling (year)	2021
Window frame	yes
Window material	tempered glass Gebo
Flybridge	new instrument panel and 2 chairs 2017
Fuel tank (litre)	polyethylene 3520
Fuel tank 2 (litre)	polyethylene 3520
Level indicator (fuel tank)	yes



Freshwater tank (litre)	4.807
Blackwater tank (litre)	390+1700
Blackwater tank extraction	deck extraction + pump
Wheel steering	electric
Inside helm position	yes
Flybridge helm position	electric
More info on paintwork	Hull needs polish or new paint

ACCOMMODATION

Cabins	4
Berths	8
Floor	carpet New 2017
Aft deck	fixed hardtop with 5 solar panels
Pilot house	yes
Deck saloon	yes
Headroom saloon (m)	2m
Heating	central hot water Renewed 2017
Air-conditioning	reverse cycle airco New units Saloon and mastercabin
Navigation center	In pilothouse
Chart table	yes
Aft Cabin	yes
Galley	yes
Countertop	corian
Sink	stainless steel
Cooker	induction Beko
Oven	Siemens
Extractor	Atag
Microwave	Sharp
Fridge	12v/230v
Freezer	yes
Hot water system	Heater



Water pressure system	electrical
Dishwasher	Bosch
Kettle	yes
Hot water tap	yes
Crockery	yes
Owners cabin	double bed
Wardrobe	hanging
Bathroom	en suite
Toilet	en suite
Toilet system	electric
Wash basin	in the bathroom
Shower	en suite
Guest cabin 1	double bed
Wardrobe	hanging and drawers
Bathroom	en suite
Toilet	en suite Renewed 2017
Toilet system	electric
Wash basin	at the toilet
Shower	yes
Guest cabin 2	twin single
Wardrobe	hanging and shelves
Bathroom	shared
Toilet	shared Renewed 2017
Toilet system	electric
Wash basin	at the toilet
Shower	shared
Guest cabin 3	Forward 2 bunkbeds 1 double bed
Wardrobe	hanging and drawers
Toilet	shared
Toilet system	electric
Wash basin	at the toilet
Shower	shared



Washing machine/dryer combi	in utility room LG
Ironing facilities	yes
Extra info	Utility room: workbench with grinder and tool set.

MACHINERY

No of engines	2
Make	Caterpillar
Type	3208
HP	210
kW	154.35
Year installed	1984
Year of overhaul	taken ashore fully refurbished 2017
Maximum speed (kn)	9
Cruising speed (kn)	8
Engine hours	220
Engine cooling system	freshwater heat exchanger
Drive	shaft
Engine controls	electrical Renewed 2017
Gearbox	hydraulic Twindisk 502
Bowthruster	25 kW electric and Hydraulic on engine
Propeller type	fixed
Propeller blades	3
Propeller shaft material	stainless steel Propellers and shafts overhauled 2017
Shaft lubrication	grease
Manual bilge pump	yes
Electric bilge pump	Automatic
Bilge alarm	yes
Electrical installation	new control panel electric system in utility room 12V/110V/220v
Generator	Sole 9.5 kW installed 2017
Generator 2	Sole 9.5 kW installed 2017
Batteries	yes



Start battery	2x 190 Ah
Service battery	3x 220 Ah
Navigation Battery	2x 220Ah
Generator battery	2x 90 Ah
Bowthruster battery	yes
Battery monitor	yes
Battery charger	Phoenix 12v
Battery charger/inverter	Victron Quattro 24v 200Ah
Wind generator	yes
Solar panel	5x
Diode battery combiners	yes
Shorepower	yes
Watermaker	Installed 2017, never used
Extra info	Stainless steel guard rails for main engines.

NAVIGATION

Compass	Sestrel
Electric compass	Satellite
Multi control display	New Simrad 12 Evo3 system version 1.5
Depth sounder	yes
Forw. looking depth sounder	yes
Windset	Simrad
VHF	Sailor RT2048 + RT 2047 (no Atis) Icom
Autopilot	Simrad
Rudder angle indicator	yes
Radar	Simrad
GPS	Simrad
Plotter/GPS	yes
Radar/GPS/plotter	13 inch in pilothouse + 9inch on flybridge Simrad
Navtex	Furuno NX360
PC connection	yes



EPIRB	yes
Searchlight	yes

EQUIPMENT

Fixed hardtop	Aft deck
Sun awning	yes
Cockpit cushions	Aft deck
Cockpit table	Aft deck
Cockpit chairs	Aft deck
Boarding ladder	Marquipt
Gangway	yes
Anchor	2x Stokes Stockless
Anchor 2	2x
Windlass	hydraulic
Capstan	yes
Dinghy	rigid inflatable Zodiac
Outboard	Tohatsu 15 hp
Davits	stainless steel Marquipt
Sea railing	yes
Life raft (pers)	container 8pax
Last life raft survey	must be checked
Lifejackets	yes
Wiper	yes
Clearview window	2x
Horn	electric
Fenders	yes
Mooring lines	yes
Spare parts	yes
Tools	yes
TV	yes
Fire extinguisher	yes



Auto extinguisher system

Halon

RIGGING

Rigging

ketch-cutter

Standing rigging

wire Renewed 2017 stainless steel

Brand mast

Hood

Material mast

aluminium coated

Mainsail

2017

Stoway mast

Hood

Mizzen staysail

in mast furling

Jib

furling On inner stay

Genoa

yes

Genoa furler

Furlex 400S

Spinnaker

yes

Removable innerforestay

yes

Reefing System

main in-mast furling On both masts

Secondary sheet winch

Barient 27 ST + Barient 21C for mizzen

Genoa sheetwinches

2x Barient 36 ST electric

Halyard winches

1x Barient 25C + Barient 24C

Multifunctional winches

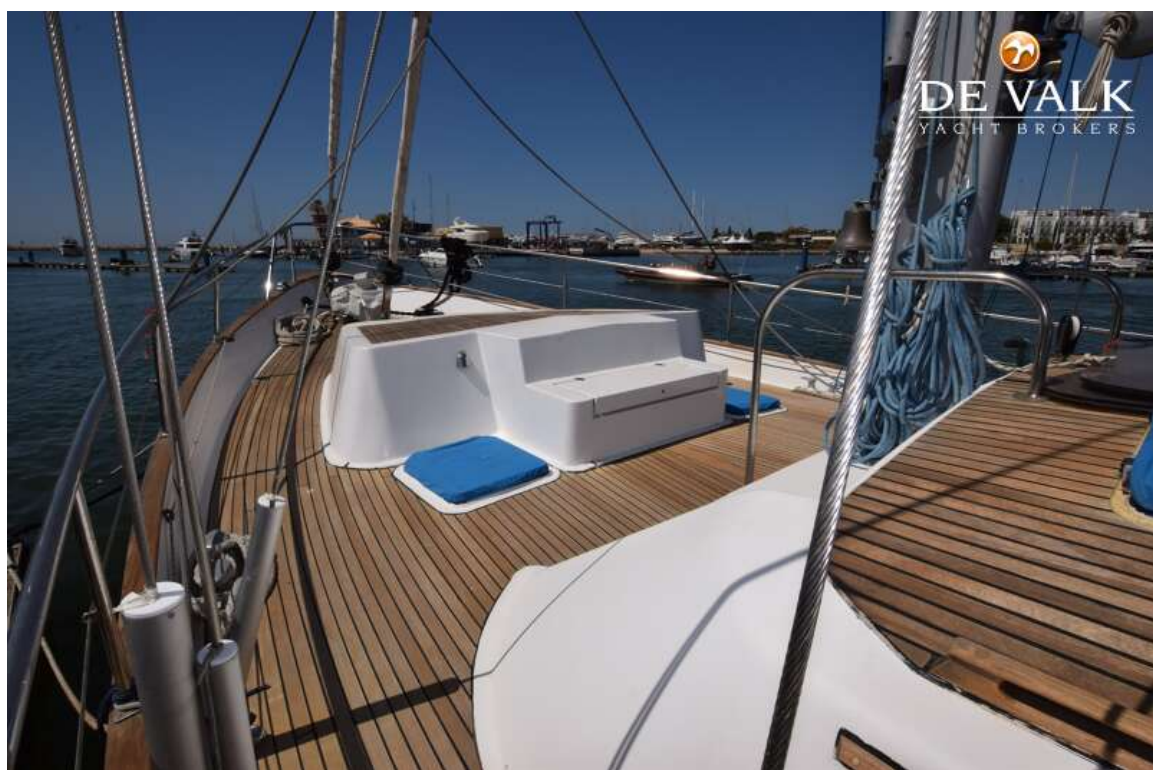
Anderson 40 ST (mast)

Spi-pole

Barbarossa



CHEOY LEE 63 LRMS





CHEOY LEE 63 LRMS



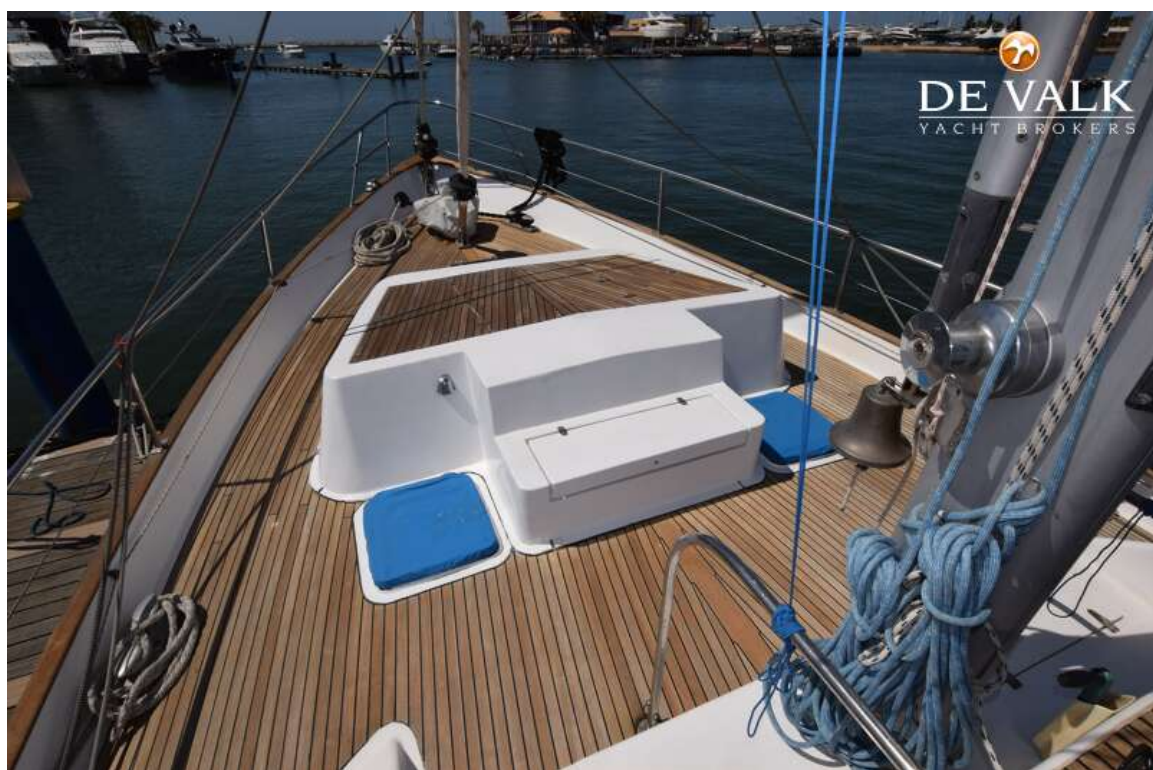
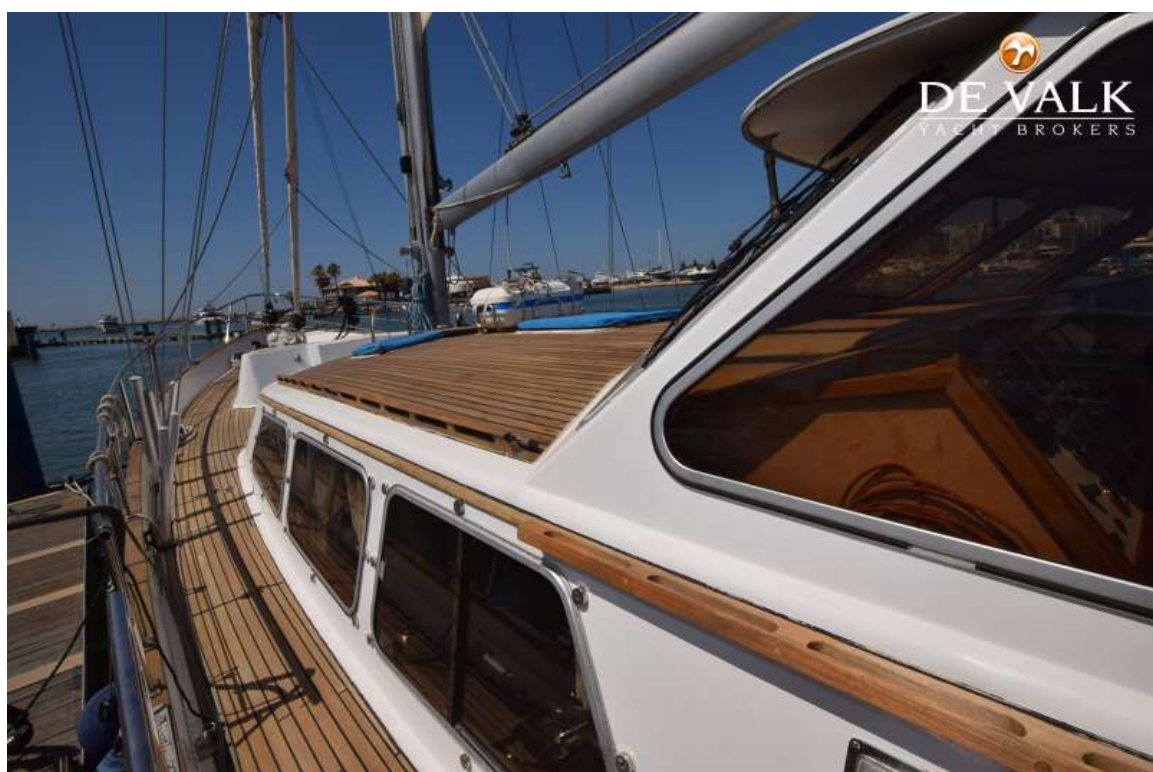
CHEOY LEE 63 LRMS



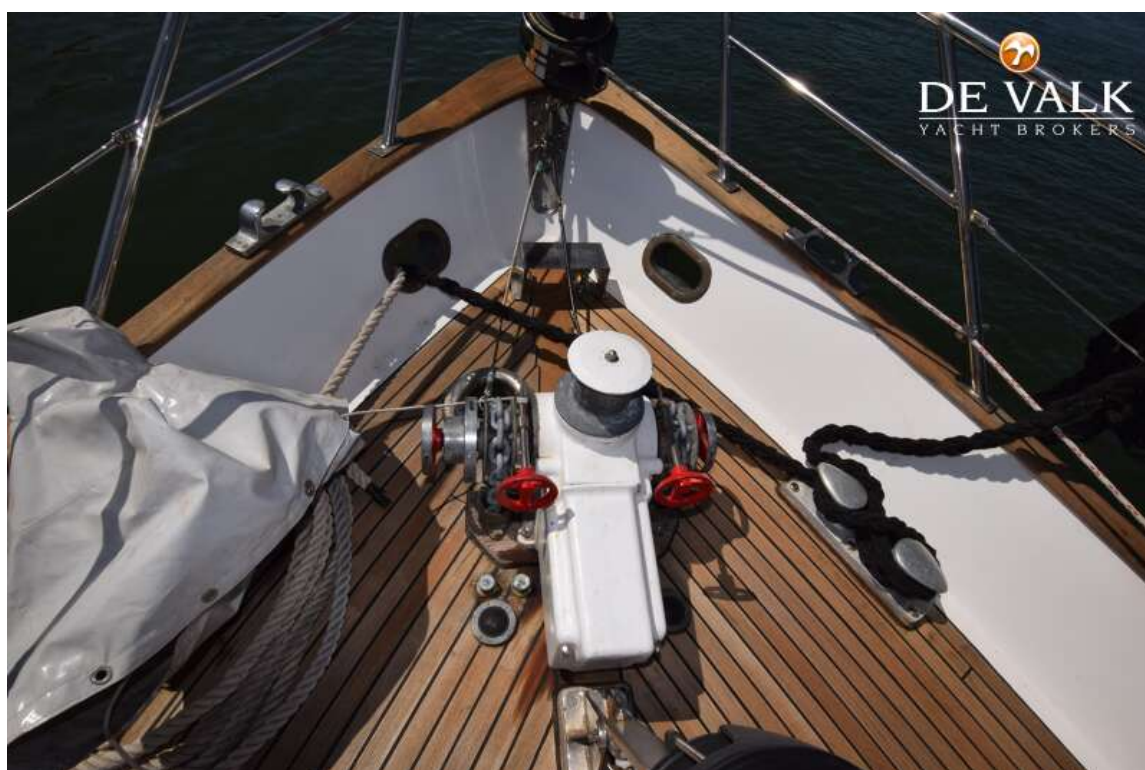
CHEOY LEE 63 LRMS



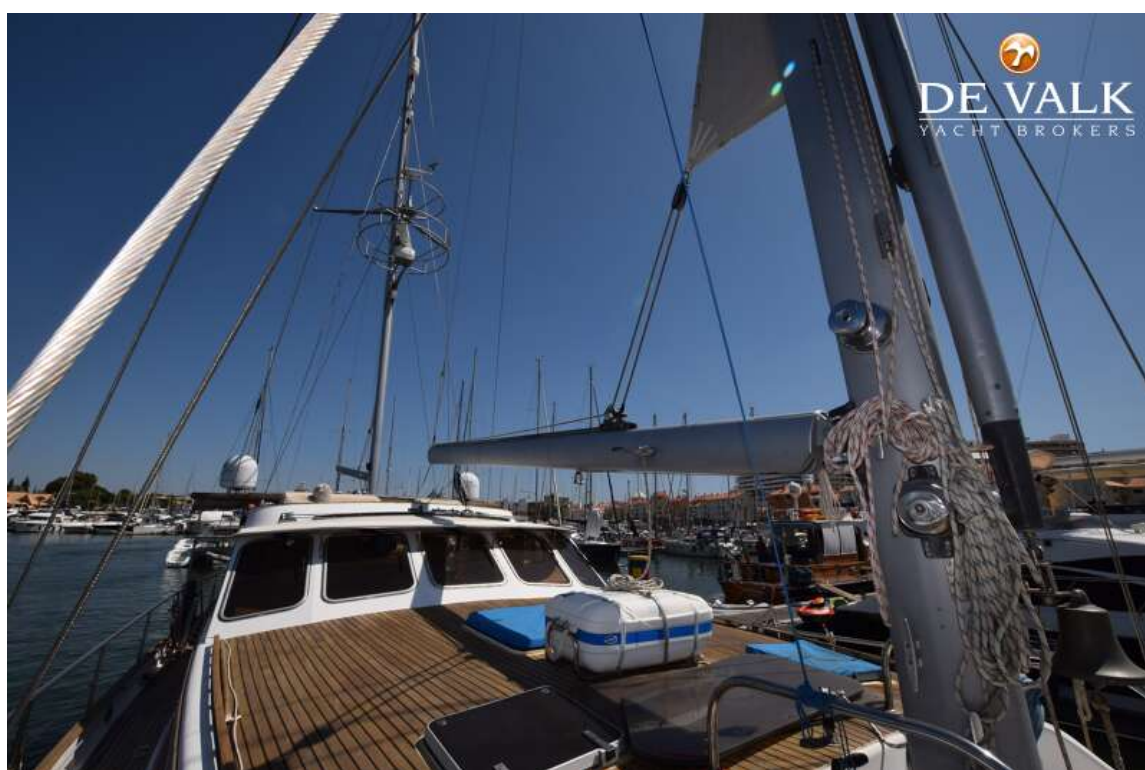
CHEOY LEE 63 LRMS



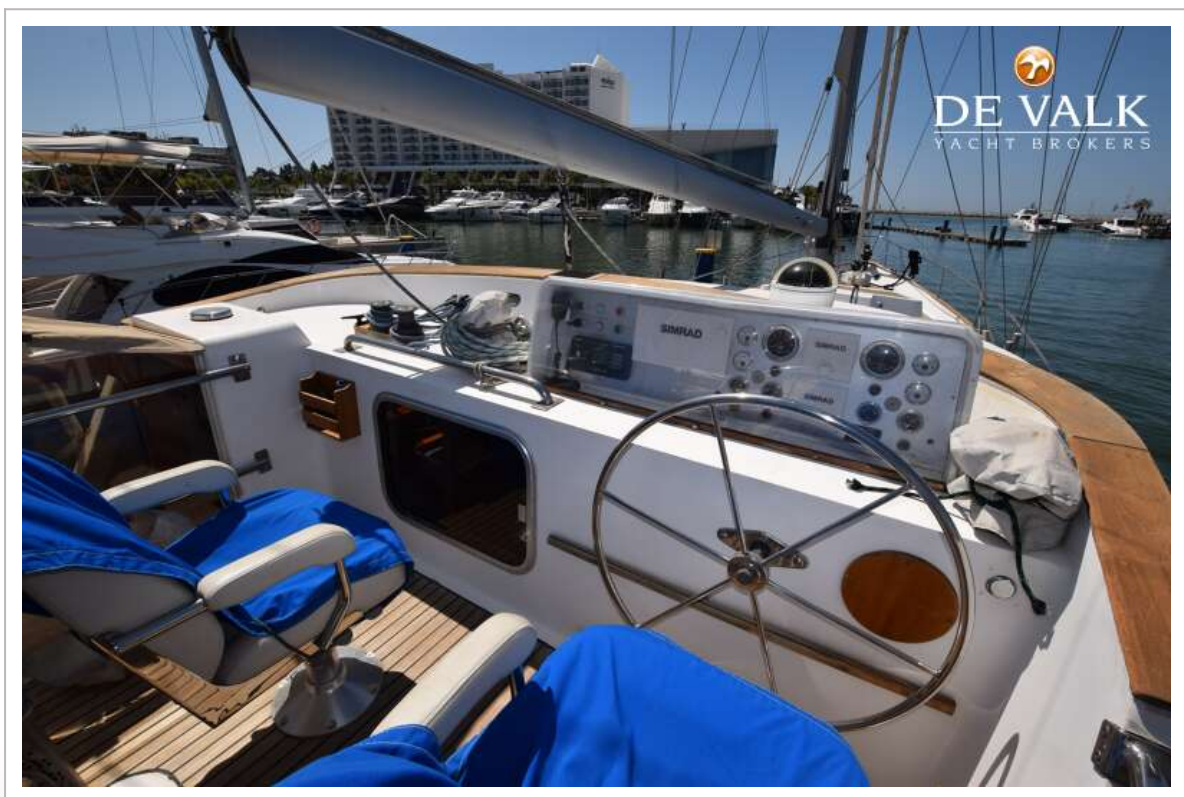
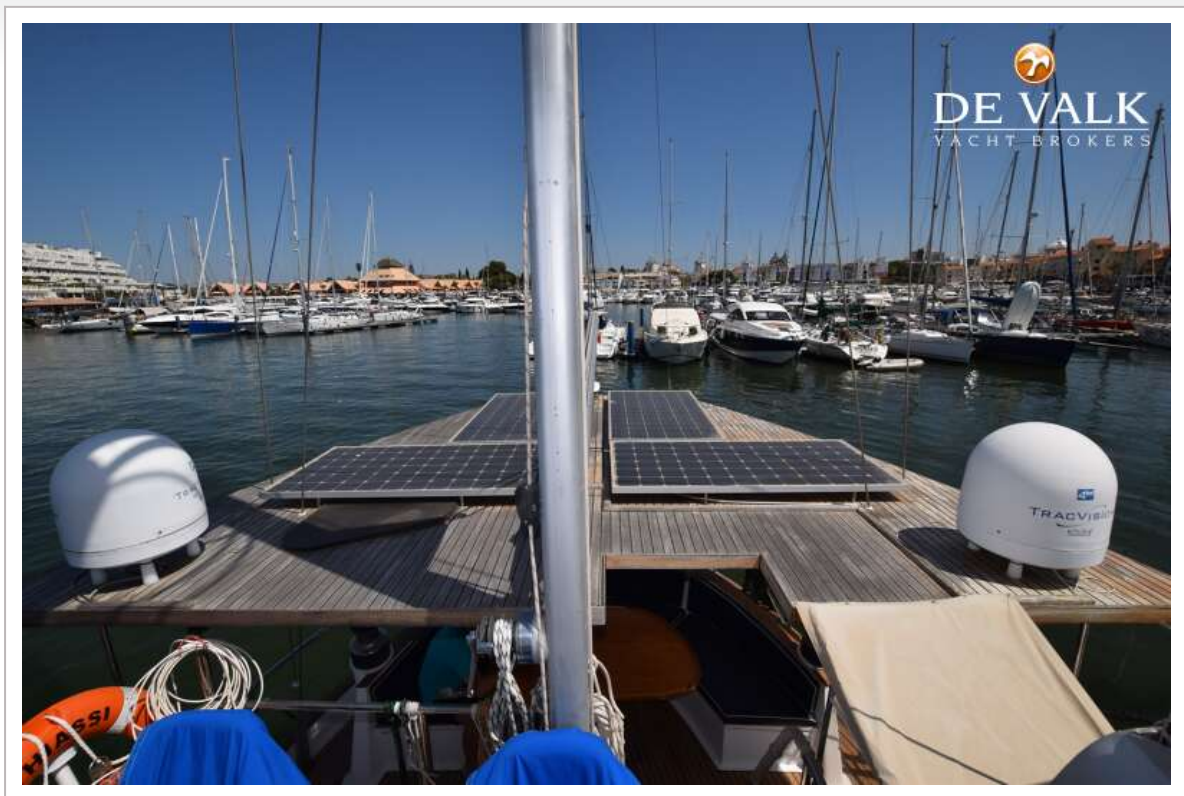
CHEOY LEE 63 LRMS



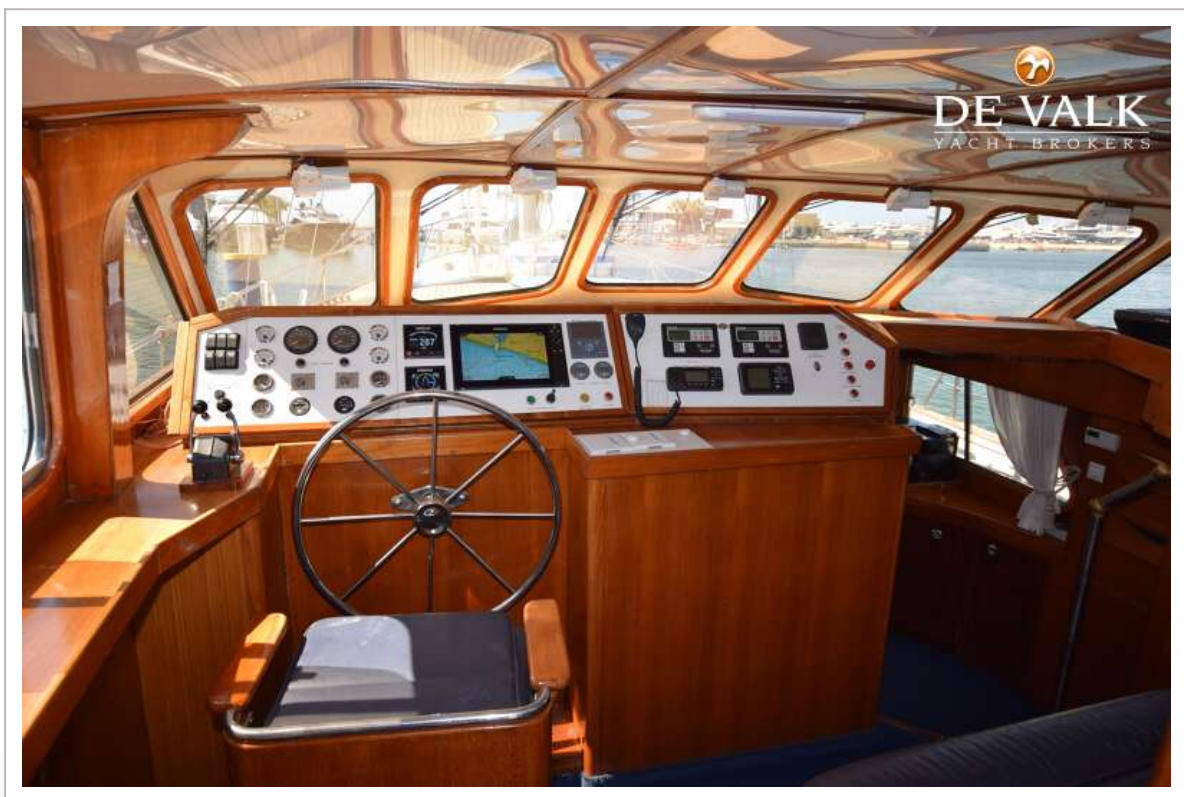
CHEOY LEE 63 LRMS



CHEOY LEE 63 LRMS



CHEOY LEE 63 LRMS



CHEOY LEE 63 LRMS



CHEOY LEE 63 LRMS



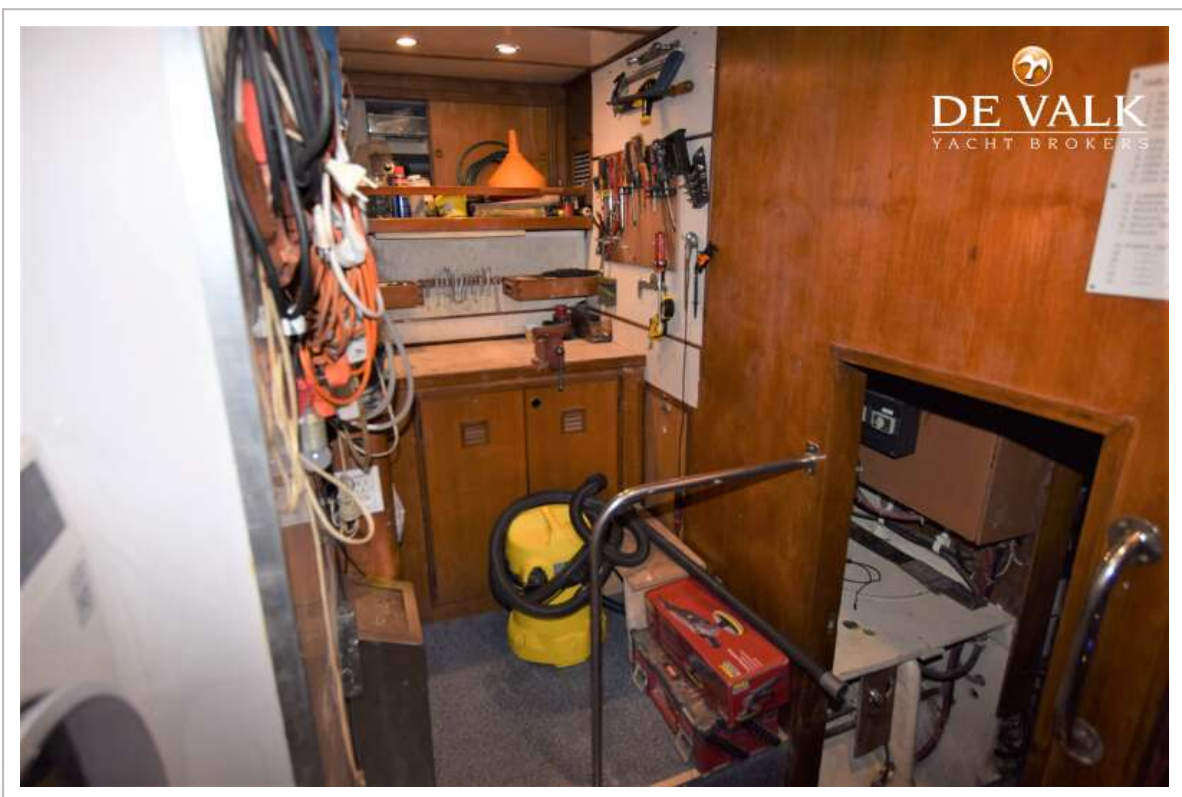
CHEOY LEE 63 LRMS



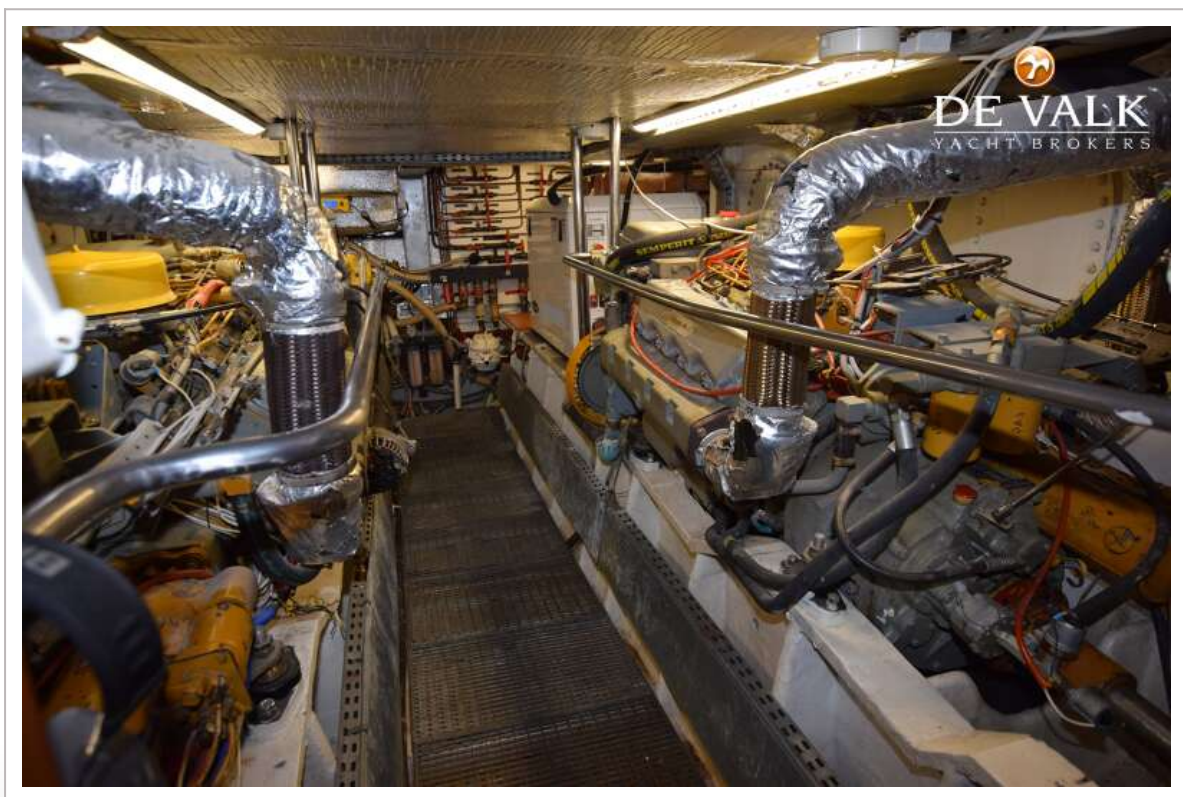
CHEOY LEE 63 LRMS



CHEOY LEE 63 LRMS



CHEOY LEE 63 LRMS



CHEOY LEE 63 LRMS



CHEOY LEE 63 LRMS



CHEOY LEE 63 LRMS

