



DE VALK
YACHT BROKERS



HALLBERG RASSY 352 SCANDINAVIA



DE VALK
YACHT BROKERS

HALLBERG RASSY 352 SCANDINAVIA

BROKER'S COMMENTS

Excellent cruiser from the famous Hallberg Rassy Yard. Pedigree in design, finishing, and build quality, puts them in the top class of yacht building. This Hallberg Rassy 352 was one of the last one built and has every option you could wish for. All cruising qualities are represented, tall rig with stoway mast, new engine and new propeller. Most of the equipment is very recent. Now ready to be admired and inspected 7 days a week in our sales harbour in Hindeloopen.

Johan Schootstra

SPECIFICATIONS

Dimensions	10.54 x 3.38 x 1.67 (m)	Builder	Hallberg Rassy Varv AB
Built	1988	Cabins	2
Material	GRP	Berths	7
Engine(s)	1 x Volvo Penta D2-50F (2021) diesel	Hp/Kw	51.00 (hp), 37.54 (kw)
Asking price	sold (VAT)	Lying	at sales office

CONTACT

Sales office	De Valk Hindeloopen B.V.	Telephone	+31 514 52 40 00
Address	Oosterstrand 1 8713 JS Hindeloopen NL	E-mail	hindeloopen@devalk.nl

DISCLAIMER

These particulars are given in good faith as supplied but cannot be guaranteed.



HALLBERG RASSY 352 SCANDINAVIA

GENERAL

Model	HALLBERG RASSY 352 SCANDINAVIA
Type	sailing yacht
LOA (m)	10,54
LWL (m)	8,70
Beam (m)	3,38
Draft (m)	1,67
Air draft (m)	17,00
Headroom (m)	1,85
Year built	1988
Builder	Hallberg Rassy Varv AB
Country	Sweden
Designer	Christoph Rassy / Olle Enderlein
Displacement (t)	6,7
Ballast (tonnes)	cast iron 3
Hull material	GRP
Hull colour	off-white
Hull shape	round-bilged
Keel type	long keel
Superstructure material	GRP
Rubbing strake	Bronze strip
Deck material	GRP
Deck finish	teak - Maintained 2021 (plugs + rubber)
Superstructure deck finish	non-skid moulded in
Cockpit deck finish	teak
Antifouling (year)	2021 International VC 17 extra
Dorades	4x
Window frame	aluminium
Window material	tempered glass
Deckhatch	4x
Fuel tank (litre)	stainless steel - 140 ltr. cleaned in 2021



HALLBERG RASSY 352 SCANDINAVIA

Fuel tank 2 (litre)	stainless steel - 100 ltr.
Level indicator (fuel tank)	New 2021
Freshwater tank (litre)	polyethylene - 350 ltr.
Level indicator (freshwater)	yes
Wheel steering	cable steering - new leather on steering wheel
Emergency tiller	yes
More info on hull	New anodes, valves checked 2021

ACCOMMODATION

Cabins	2
Berths	7
Interior	mahogany
Floor	teak and holly
Aft deck	yes
Saloon	yes
Headroom saloon (m)	1,85 mtr.
Heating	diesel ducted hot air Eberspächer airtronic D4 - 2016
Navigation center	yes
Chart table	yes
Aft Cabin	Owners cabin
Galley	yes
Countertop	plastic - white
Sink	stainless steel Double
Cooker	calor gas Force10 - 3 burner - 2006
Oven	In cooker
Fridge	Frigoboat
Freezer	Small compartment in fridge
Hot water system	220V + engine 40 ltr. boiler
Water pressure system	electrical
Manual and/or foot pump	yes
Owners cabin	double bed + single bed Aft cabin



HALLBERG RASSY 352 SCANDINAVIA

Bed length (m)	1,90 mtr.
Wardrobe	hanging and shelves
Guest cabin 1	v-bed
Bed length (m)	1,85 mtr.
Wardrobe	hanging and shelves
Bathroom	shared
Toilet	Jabsco
Toilet system	manual - new pump 2021
Wash basin	Yes
Shower	Yes

MACHINERY

No of engines	1
Make	Volvo Penta
Type	D2-50F (2021)
HP	51
kW	37,54
Fuel	diesel
Year installed	2021
Maximum speed (kn)	6,8
Cruising speed (kn)	6,2
Consumption (l/hr)	4
Engine hours	106
Engine cooling system	freshwater heat exchanger
Drive	shaft
Shaft seal	Volvo Seal
Engine controls	bowden cable
Gearbox	mechanical
Exhaust	watercooled
Propeller type	folding Volvo Penta - new 2021
Propeller blades	3



HALLBERG RASSY 352 SCANDINAVIA

Propeller shaft material	stainless steel
Shaft lubrication	water
Manual bilge pump	Whale
Electric bilge pump	1 bilgepump
Electrical installation	12 / 220 volt
Start battery	1x 70 Ah - 2015
Service battery	2x 220 Ah Victron AGM - 2017
Battery monitor	Victron - 2017
Battery charger	Mastervolt IVO Smart 12/35-3
Inverter	Techtron 500Watt
Solar panel	2x Sunbeam 50W + MPPT regulator Victron
Shorepower	with cable - 20 mtr.

NAVIGATION

Compass	C. Plath Venus
Electric compass	Autohelm ST50
Depth sounder	Autohelm ST50 DEPTH
Log	Autohelm ST50 SPEED
Windset	Autohelm ST50 VMG & WIND
VHF	Simrad RS82 DSC with 3 handsets
Autopilot	Raymarine SPX10 + Raymarine P70 display (both 2014) + new gears 2021
Radar	Raymarine 2Kw
GPS	Autohelm ST50 GPS
Radar/GPS/plotter	Raytheon Pathfinder RL70 inside and Raymarine Pathfinder RL70CRCPlus outside
Electronic chart(s)	C-map (NED - BE)
AIS transceiver	Simrad AI50 - 2013 + easysplit class B Splitter
Personal MOB transmitter	yes
Navigation lights	yes



HALLBERG RASSY 352 SCANDINAVIA

EQUIPMENT

Fixed windscreen	yes
Sprayhood	yes
Cockpit cover	yes
Bimini	With cover - 2017
Winter cover	3 pieces (used once by owner)
Cockpit table	Teak
Boarding ladder	stainless steel
Bow ladder	Stainless steel
Anchor	CQR Plough
Anchor chain	60 mtr. - 8mm - 2007
Windlass	electrical - Lofrans Cayman Horizontal 1000W - 2017
Outboard support	2x
Sea railing	wire - renewed 2006
Grab rail (superstructure)	teak
Pushpit	yes
Pulpit	yes
Radar reflector	In mast top
Fenders	8x
Mooring lines	7x
Radio-cd player	yes
iPod connection	yes
Speakers in salon	yes
Clock - barometer	yes
Fire extinguisher	3x
Latest extinguisher survey	2020

RIGGING

Rigging	sloop - Tall rigs
Standing rigging	wire - 2006
Brand mast	Seldén



HALLBERG RASSY 352 SCANDINAVIA

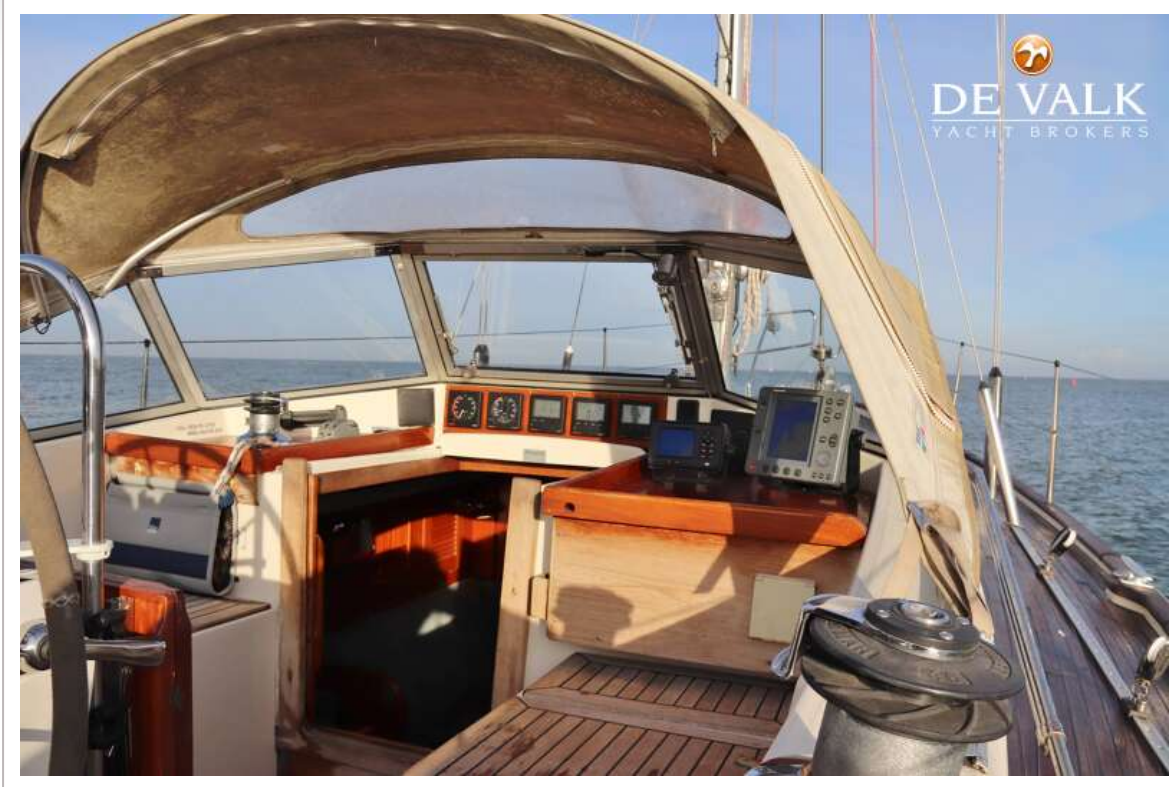
Material mast	aluminium
Spreaders	2 pair
Mainsail	TD Sails - 2000
Stoway mast	yes
Jib	Elvstrøm (little used)
Genoa	35 m² Zwaan Sails - 2014
Genoa furler	Reckmann
Genoa cover	yes
Gennaker	78,5 m² with snuffer, De Vries Sails - 2004 - little used
Stormjib	Doyle, unused
Reefing System	main in-mast furling
Backstay adjuster	hydraulic
Boomvang	gasspring
Genoa sheetwinches	2x Lewmar ST46 Self Tailing
Halyard winches	2x Lewmar 16 on mast
Reefing winch	1x Lewmar 30 for main sail
Spi-pole	aluminium
Isolated backstay	2x Ronstan Isalatoren - new 2006
Extra info	Stainless steel protective sleeve for tensioners



HALLBERG RASSY 352 SCANDINAVIA



HALLBERG RASSY 352 SCANDINAVIA



HALLBERG RASSY 352 SCANDINAVIA



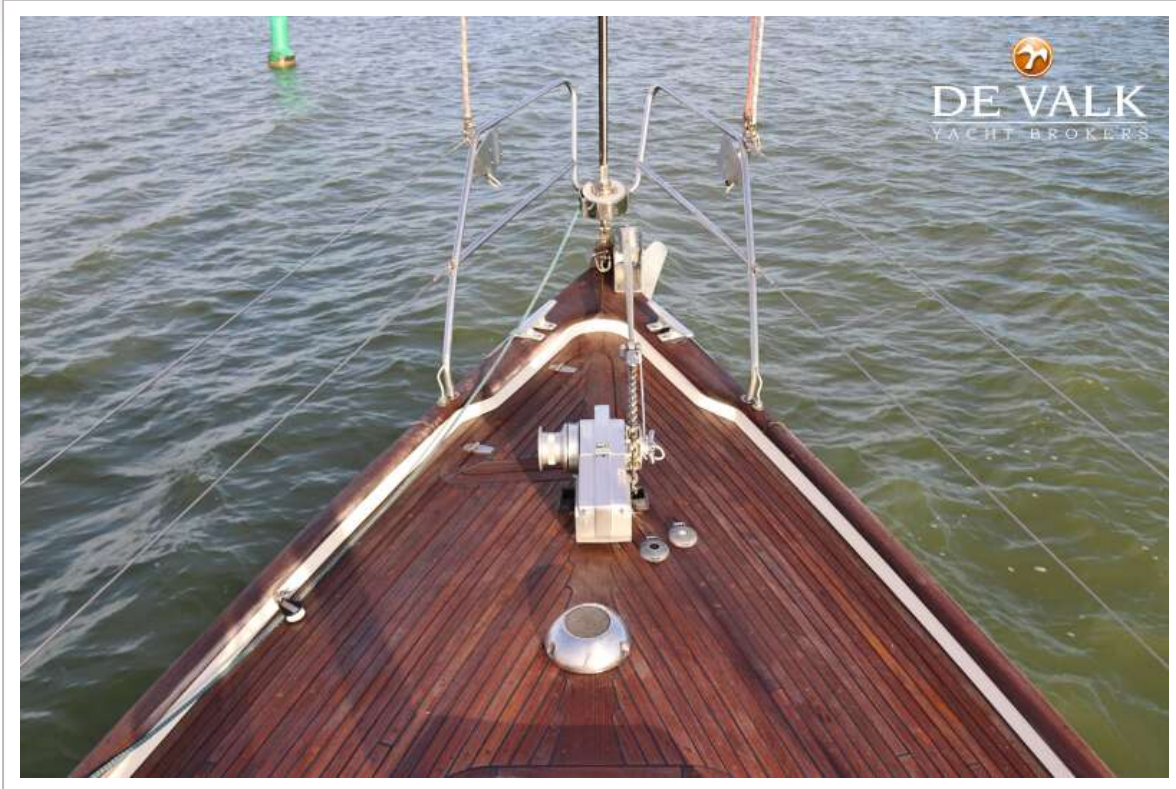
HALLBERG RASSY 352 SCANDINAVIA



HALLBERG RASSY 352 SCANDINAVIA



HALLBERG RASSY 352 SCANDINAVIA



HALLBERG RASSY 352 SCANDINAVIA



HALLBERG RASSY 352 SCANDINAVIA



HALLBERG RASSY 352 SCANDINAVIA



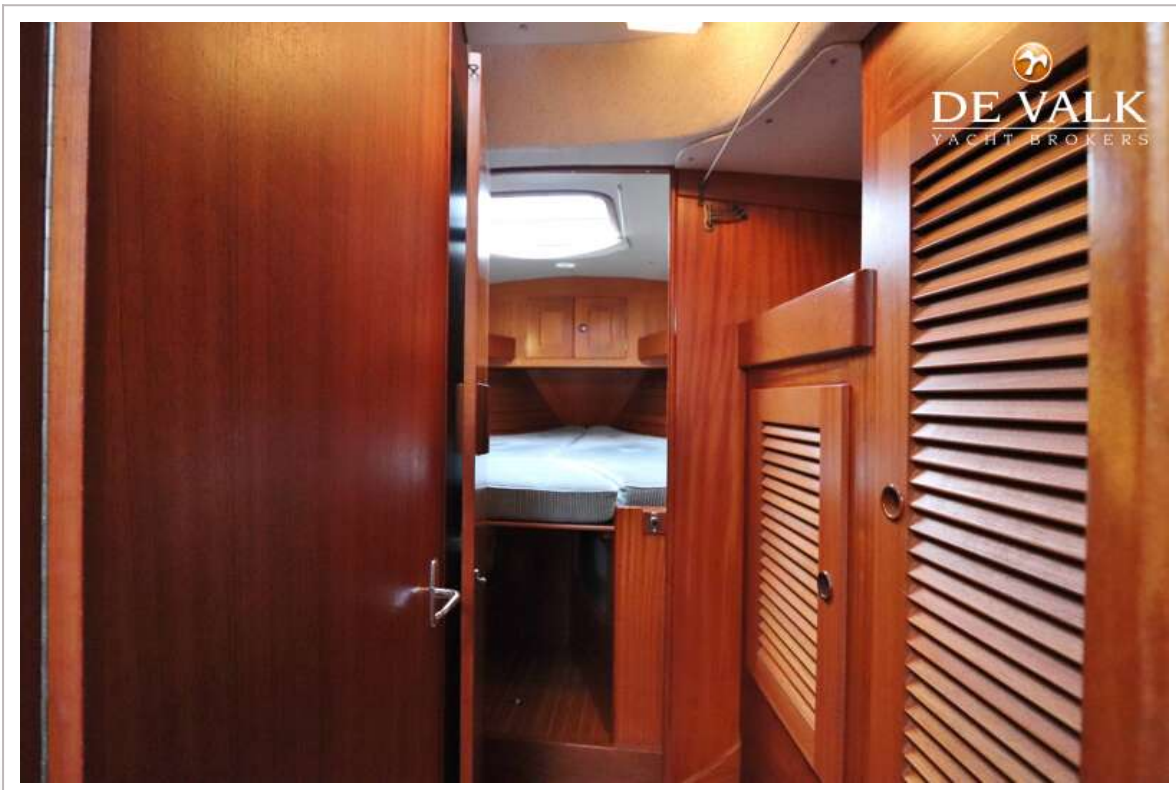
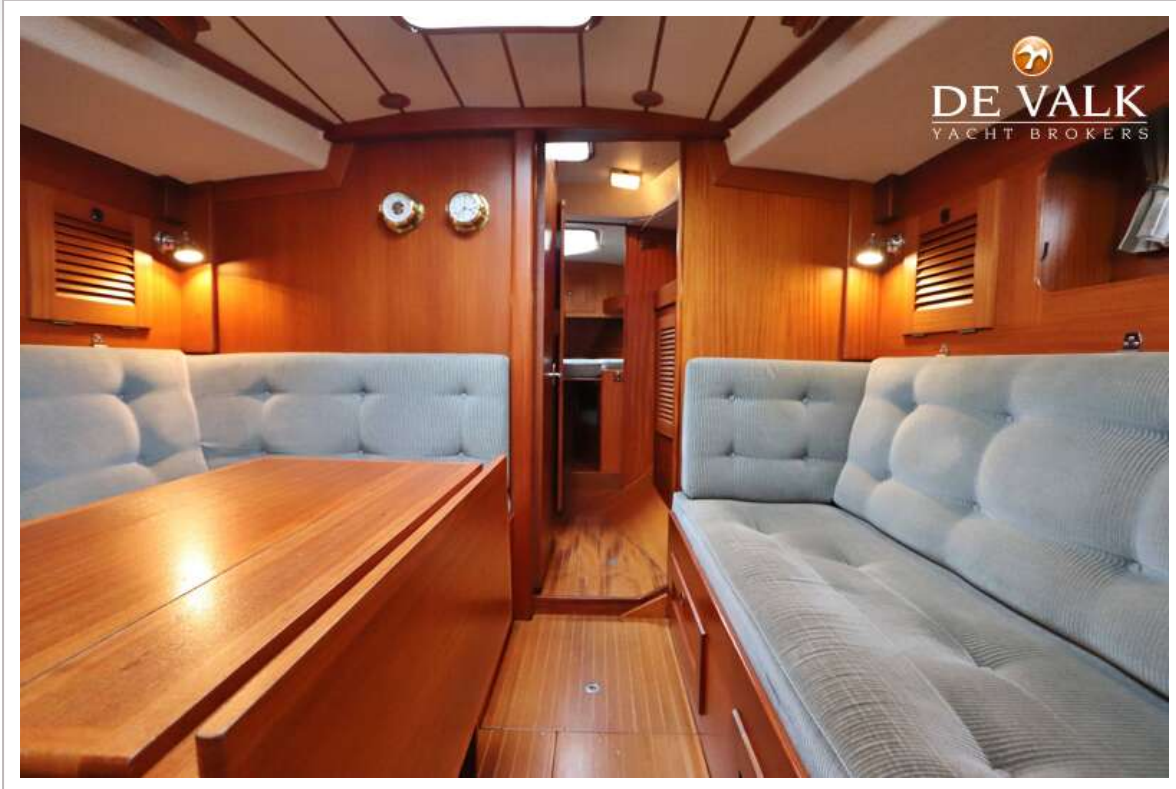
HALLBERG RASSY 352 SCANDINAVIA



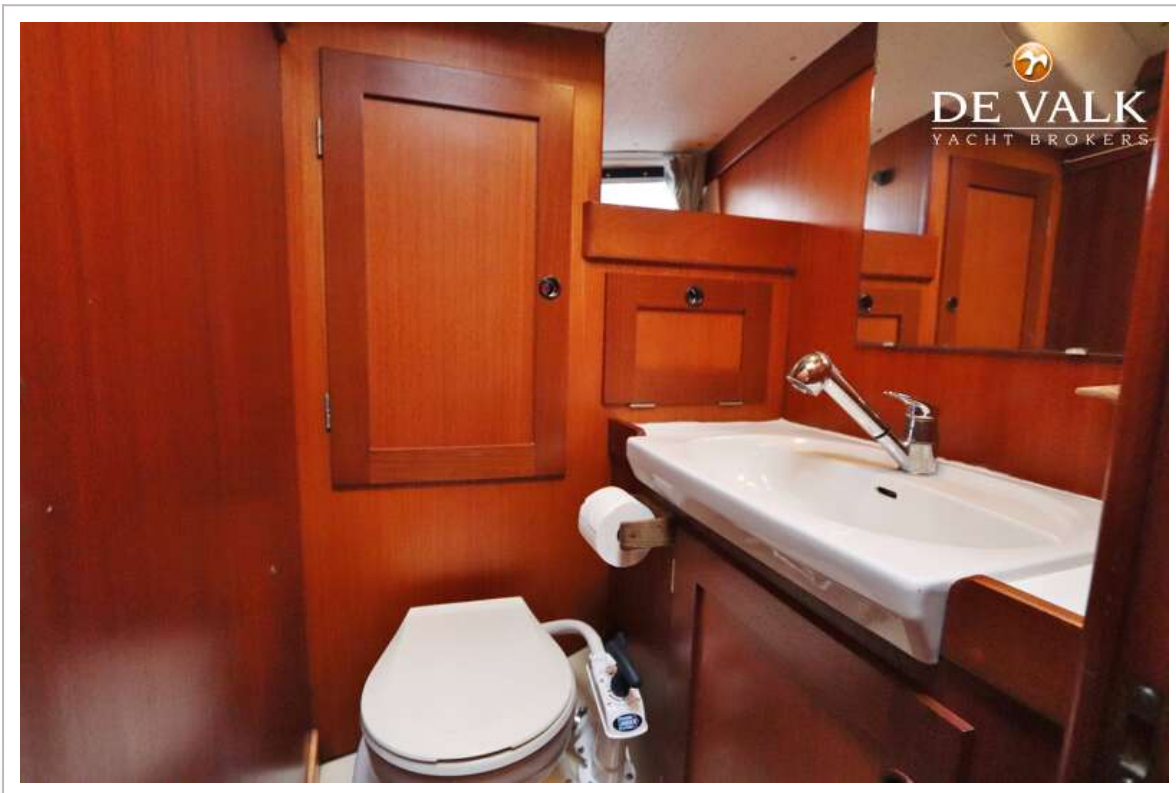
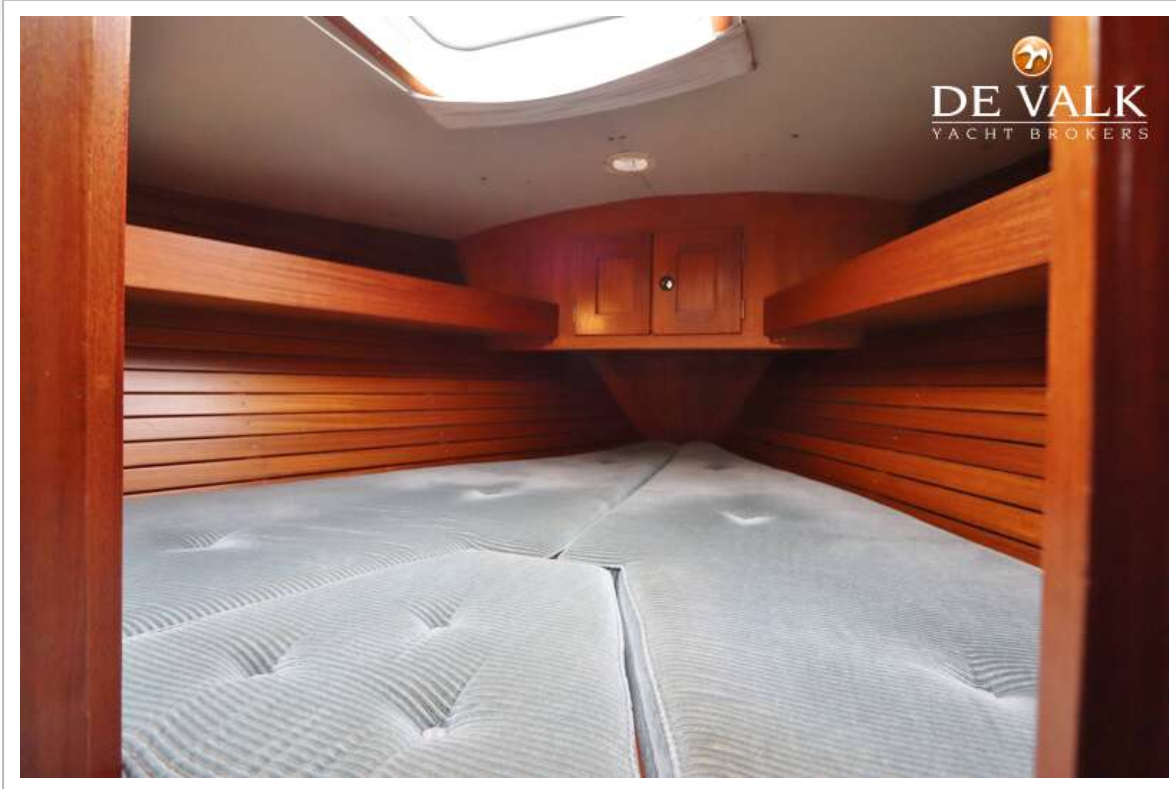
HALLBERG RASSY 352 SCANDINAVIA



HALLBERG RASSY 352 SCANDINAVIA



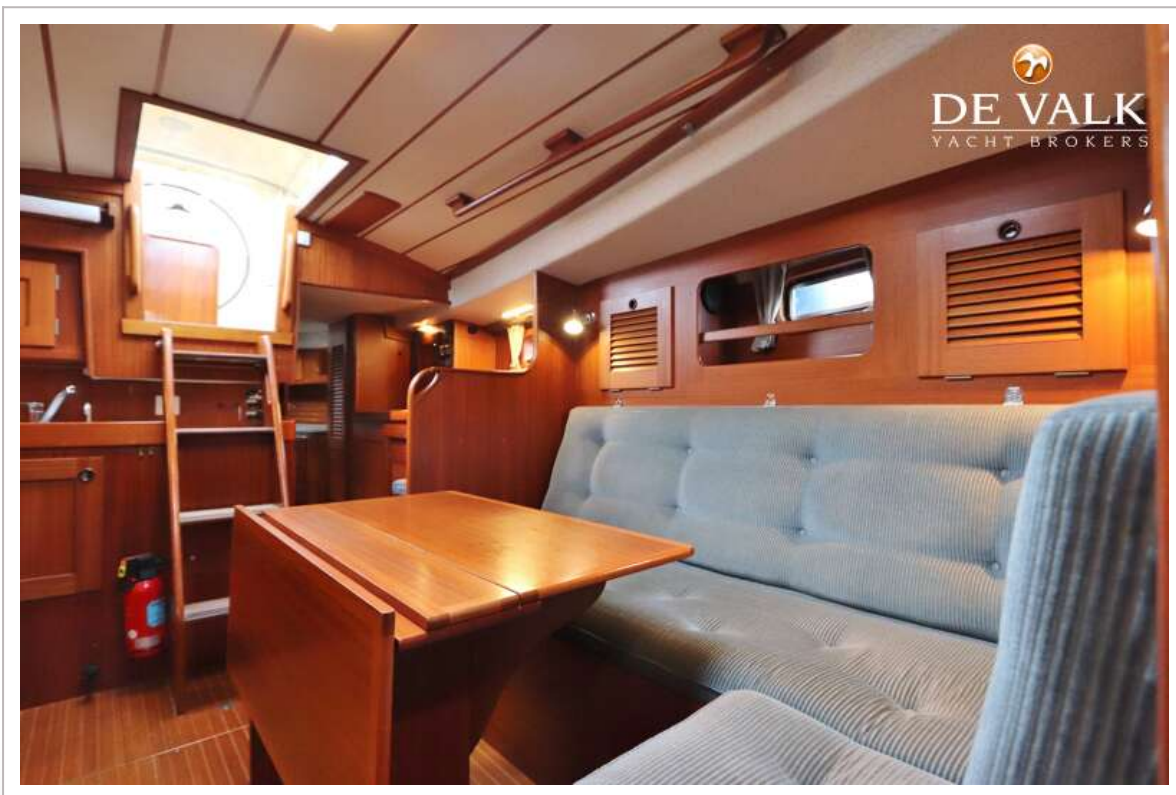
HALLBERG RASSY 352 SCANDINAVIA



HALLBERG RASSY 352 SCANDINAVIA



HALLBERG RASSY 352 SCANDINAVIA



HALLBERG RASSY 352 SCANDINAVIA



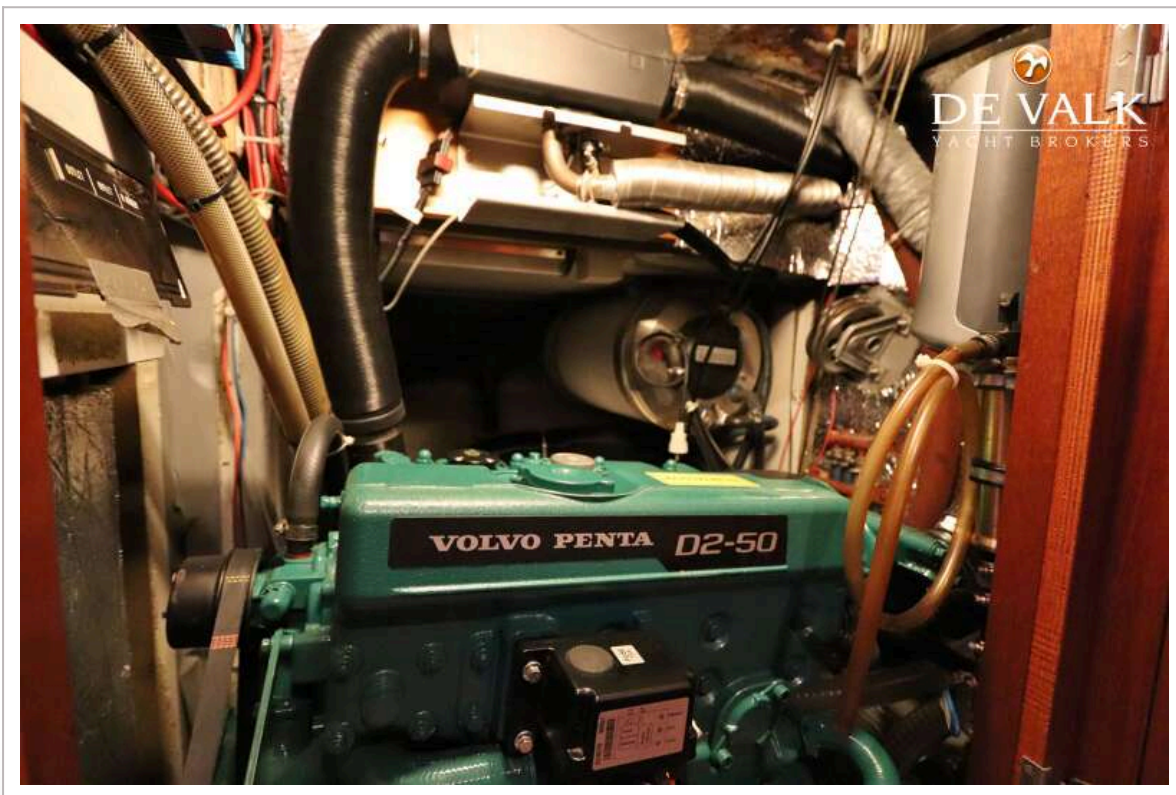
HALLBERG RASSY 352 SCANDINAVIA



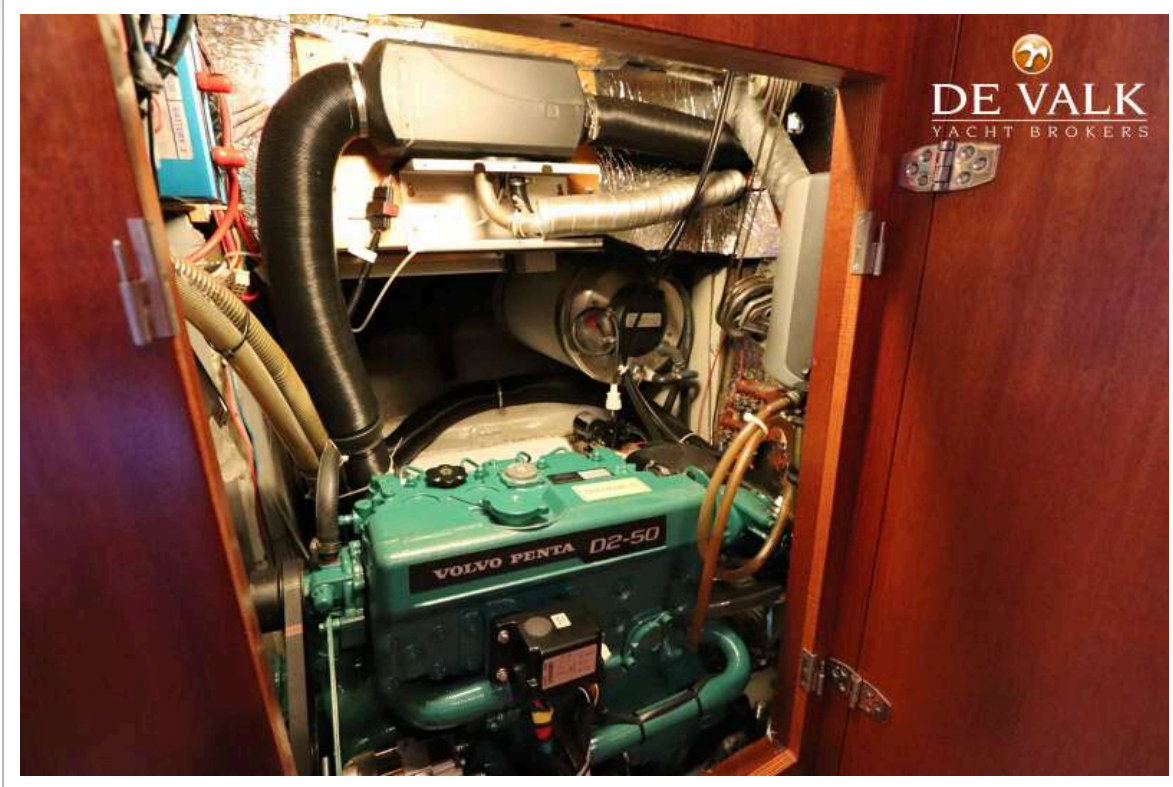
HALLBERG RASSY 352 SCANDINAVIA



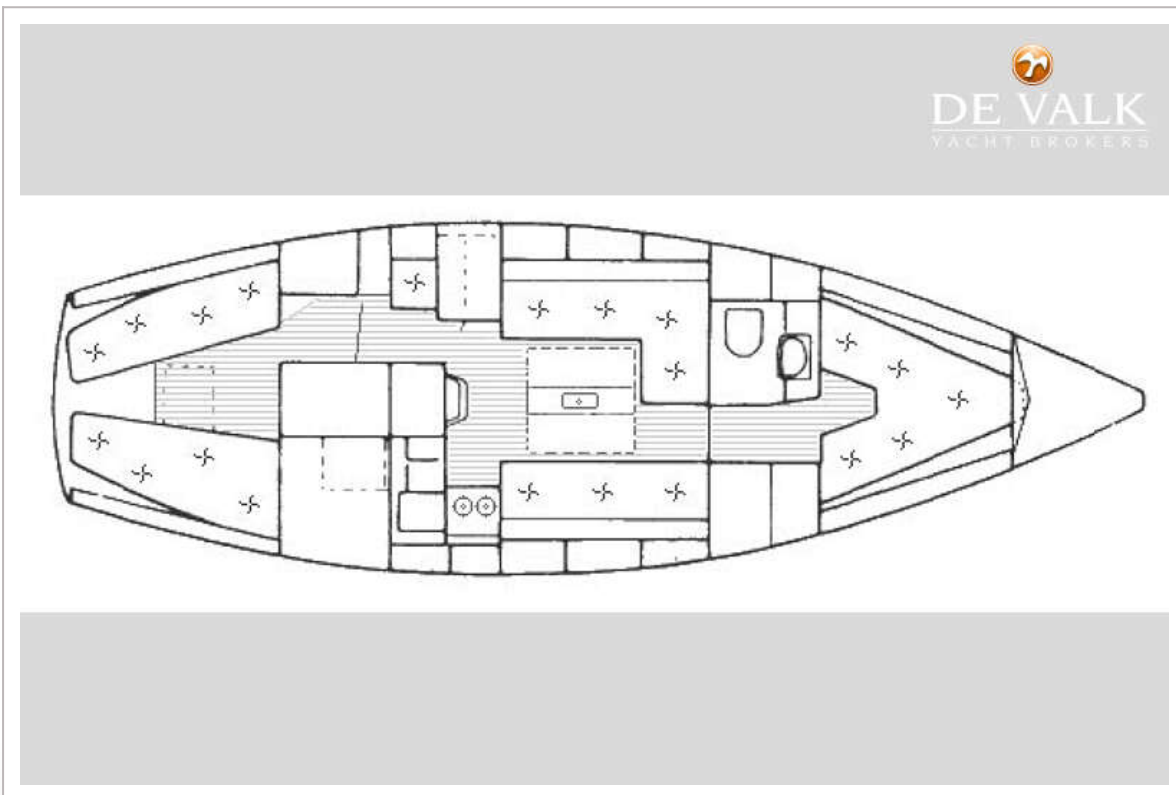
HALLBERG RASSY 352 SCANDINAVIA



HALLBERG RASSY 352 SCANDINAVIA



HALLBERG RASSY 352 SCANDINAVIA



HALLBERG RASSY 352 SCANDINAVIA

