



DE VALK
YACHT BROKERS



DEHLER 33 CLASSIC



DE VALK
YACHT BROKERS

DEHLER 33 CLASSIC

BROKER'S COMMENTS

The Dehler 33 Classic was chosen as "Boat of the Year" 1995. Improved sailing performance and design. Blue Star comes well equipped and readily available. Her interior, as well as her exterior is in good condition, privately owned and kept every winter on the hard, she's a must to see and can be seen 7 days a week in our sales marina of Katwoude.

Reinier van der Wolf

SPECIFICATIONS

Dimensions	9.99 x 2.99 x 1.65 (m)	Builder	Dehler Yachts
Built	1997	Cabins	3
Material	GRP	Berths	5
Engine(s)	1 x Yanmar 2Gm20 diesel	Hp/Kw	18.00 (hp), 13.23 (kw)
Asking price	sold (VAT)	Lying	at sales office

CONTACT

Sales office	De Valk Monnickendam B.V.	Telephone	+31 (0)299 65 63 50
Address	Hoogedijk 6 1145 PM Katwoude NL	E-mail	monnickendam@devalk.nl

DISCLAIMER

These particulars are given in good faith as supplied but cannot be guaranteed.



DEHLER 33 CLASSIC

GENERAL

Model	DEHLER 33 CLASSIC
Type	sailing yacht
LOA (m)	9,99
LWL (m)	9,00
Beam (m)	2,99
Draft (m)	1,65
Air draft (m)	15,50
Year built	1997
Launched	1997
Builder	Dehler Yachts
Country	Germany
Designer	Judel/Vrolijk
Displacement (t)	3,8
Ballast (tonnes)	cast iron and lead 1,4
Gross tonnage	4
Net tonnage	3,8
Hull material	GRP
Hull colour	blue
Hull shape	round-bilged
Keel type	fin keel with bulb
Superstructure material	GRP
Rubbing strake	rubber
Deck material	GRP
Deck finish	teak
Superstructure deck finish	non-skid moulded in
Cockpit deck finish	teak
Antifouling (year)	International self polishing 2021
Window material	perspex
Fuel tank (litre)	steel 60
Level indicator (fuel tank)	yes



Freshwater tank (litre)	polyethylene 90
Blackwater tank (litre)	polyethylene
Blackwater tank extraction	deck extraction + uw line
Tiller	yes

ACCOMMODATION

Cabins	3
Berths	5
Interior	mahogany
Floor	wood
Open cockpit	yes
Saloon	yes
Headroom saloon (m)	1,95
Heating	diesel ducted hot air Eberspaecher (2015)
Navigation center	yes
Chart table	yes
Aft Cabin	yes
Galley	yes
Countertop	plastic
Sink	stainless steel
Cooker	calor gas
Oven	yes
Fridge	yes
Water pressure system	electrical
Owners cabin	double bed
Bed length (m)	2,00
Wardrobe	hanging and shelves
Bathroom	shared
Toilet	shared
Toilet system	manual
Wash basin	at the toilet



DEHLER 33 CLASSIC

Guest cabin 1	double bed
Bed length (m)	2,00
Wardrobe	shelves
Guest cabin 2	single bed
Bed length (m)	2,00
Wardrobe	hanging and shelves

MACHINERY

No of engines	1
Make	Yanmar
Type	2Gm20
HP	18
kW	13,23
Fuel	diesel
Year installed	1997
Year of overhaul	2020
Maximum speed (kn)	7
Cruising speed (kn)	5
Engine hours	1435
Engine cooling system	seawater
Drive	sail-drive
Engine controls	bowden cable 2020
Exhaust	watercooled
Propeller type	fixed
Manual bilge pump	yes
Start battery	70 Ah
Service battery	110 Ah
Battery monitor	yes
Battery charger	yes
Shorepower	with cable



NAVIGATION

Compass	yes
Depth sounder/log	Simrad
Windset	Simrad
Repeater	yes
VHF	Shipmate
VHF handheld	yes
Autopilot	Navico
GPS	Simrad
Plotter/GPS	yes
Navigation lights	yes

EQUIPMENT

Sprayhood	yes
Cockpit cover	yes
Cockpit cushions	yes
Cockpit table	yes
Boarding ladder	stainless steel
Anchor	CQR Plough
Anchor chain	30m.
Sea railing	wire
Grab rail (superstructure)	wood
Pushpit	S/s
Pulpit	S/s
Lifejackets	yes
Lifebuoy	yes
Safety lines on deck	yes
Horn	yes
Binocular	yes
Radar reflector	yes
Fenders	yes



Mooring lines	yes
Tools	yes
Radio	yes
Speakers in salon	yes
Clock - barometer	yes
Fire extinguisher	yes
Extra info	smoke alarm

RIGGING

Rigging	sloop 7/8
Standing rigging	wire S/s
Brand mast	Seldén
Material mast	aluminium
Spreaders	2
Keel stepped mast	yes
Mainsail cover	yes
Battcars	yes
Fully battened mainsail	(1997)
Genoa	140% (1997)
Reefing System	quick-one-line-reefing
Backstay adjuster	tackle
Boomvang	gasspring
Multifunctional winches	halyard/sheet winches
Spi-pole	aluminium
Extra info	gennaker lines



DEHLER 33 CLASSIC



DEHLER 33 CLASSIC



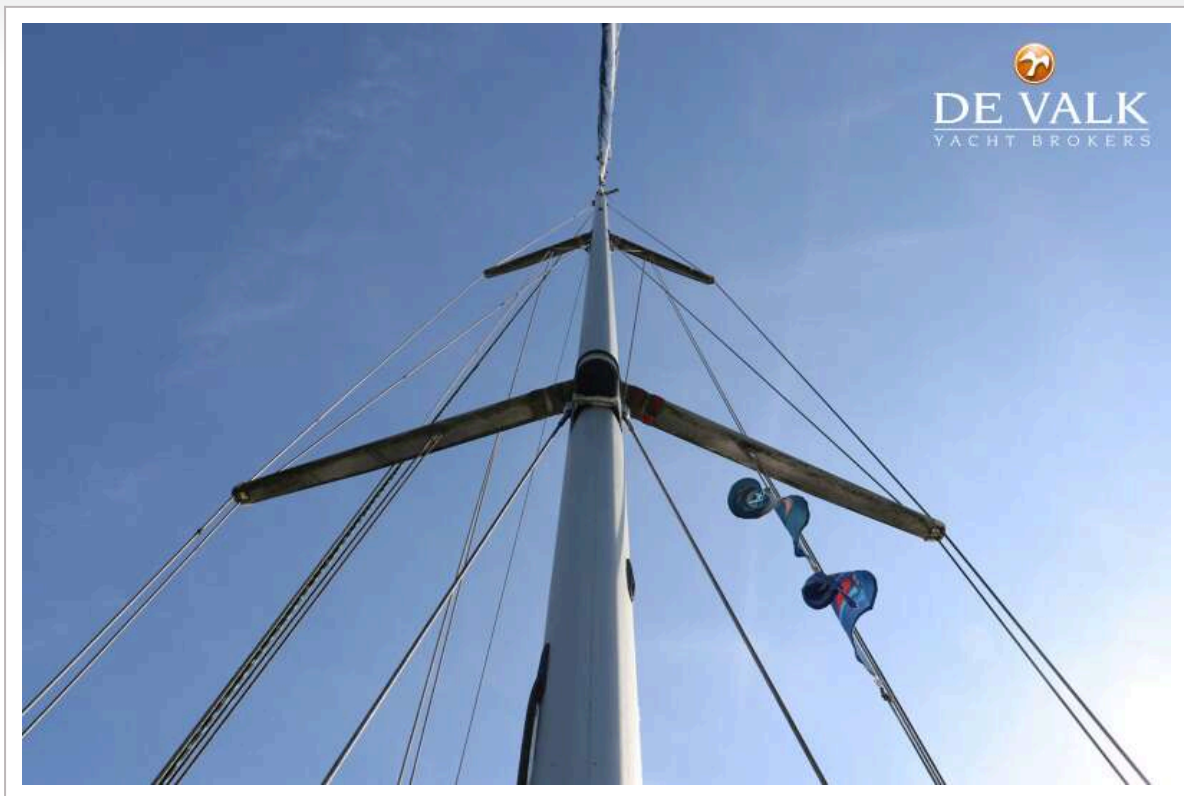
DEHLER 33 CLASSIC



DEHLER 33 CLASSIC



DEHLER 33 CLASSIC



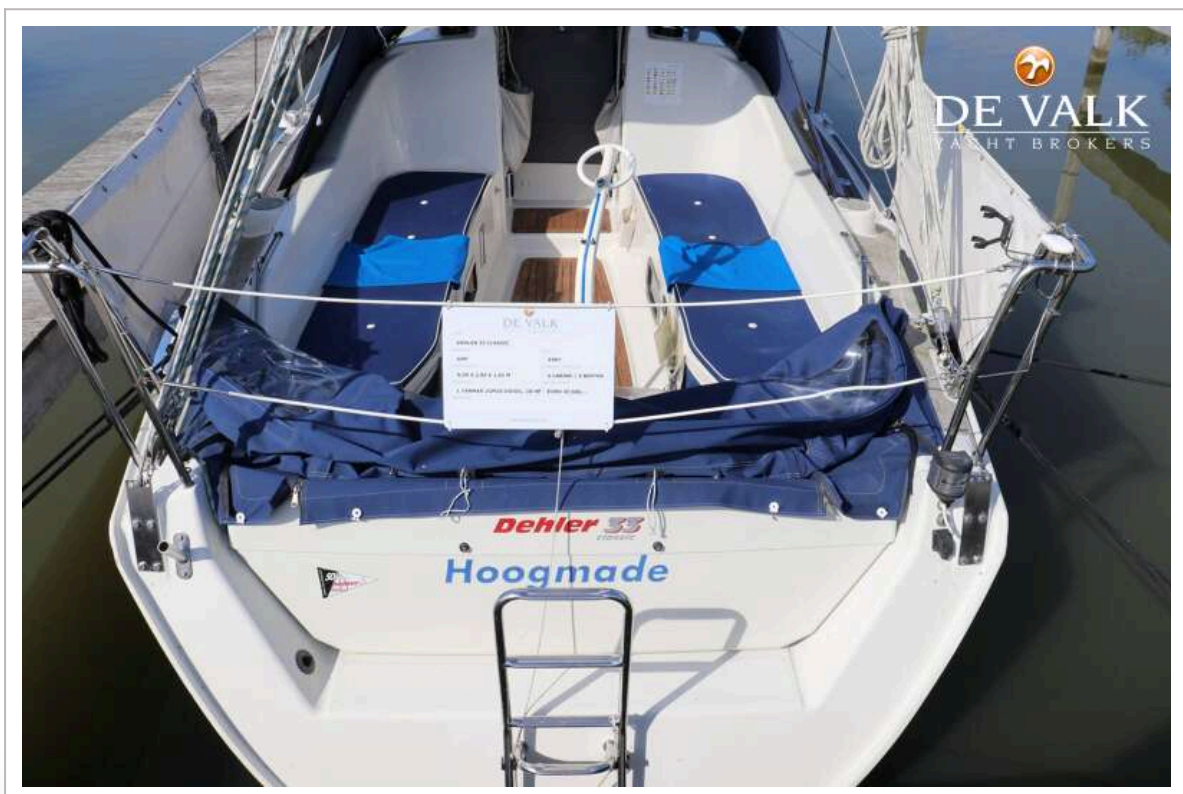
DEHLER 33 CLASSIC



DEHLER 33 CLASSIC



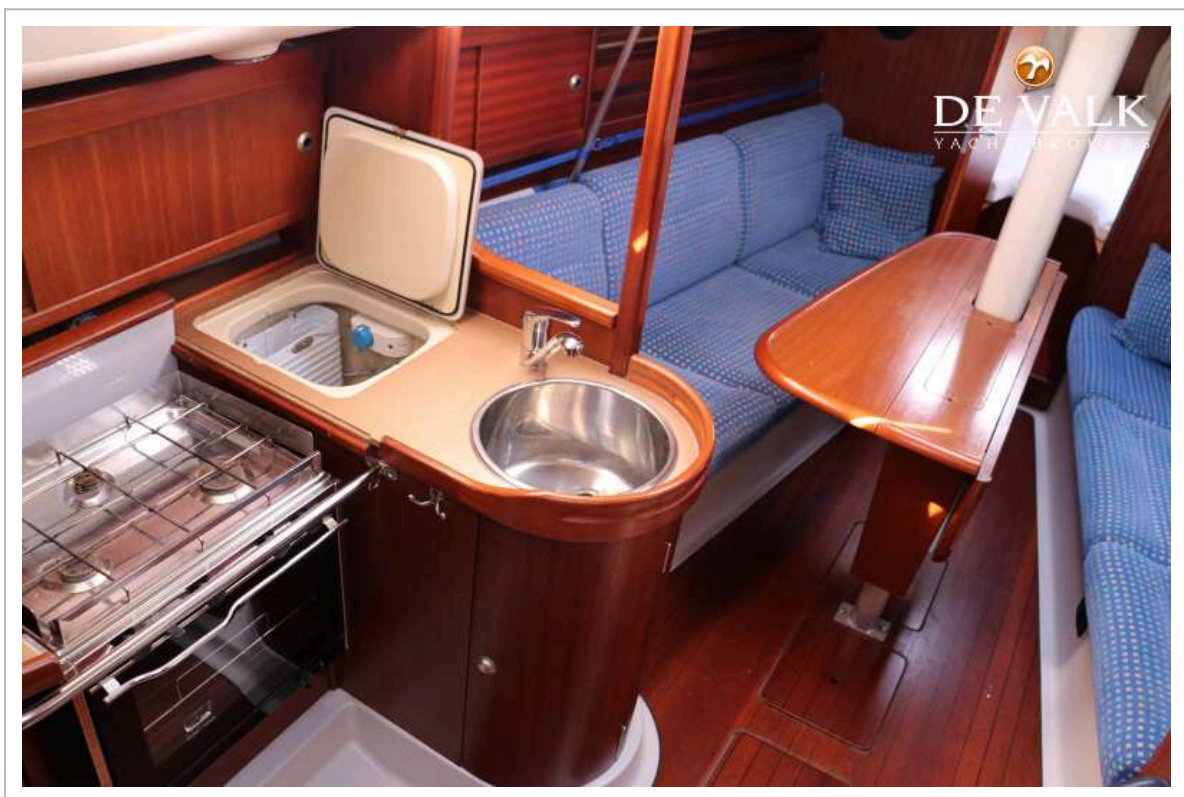
DEHLER 33 CLASSIC



DEHLER 33 CLASSIC



DEHLER 33 CLASSIC



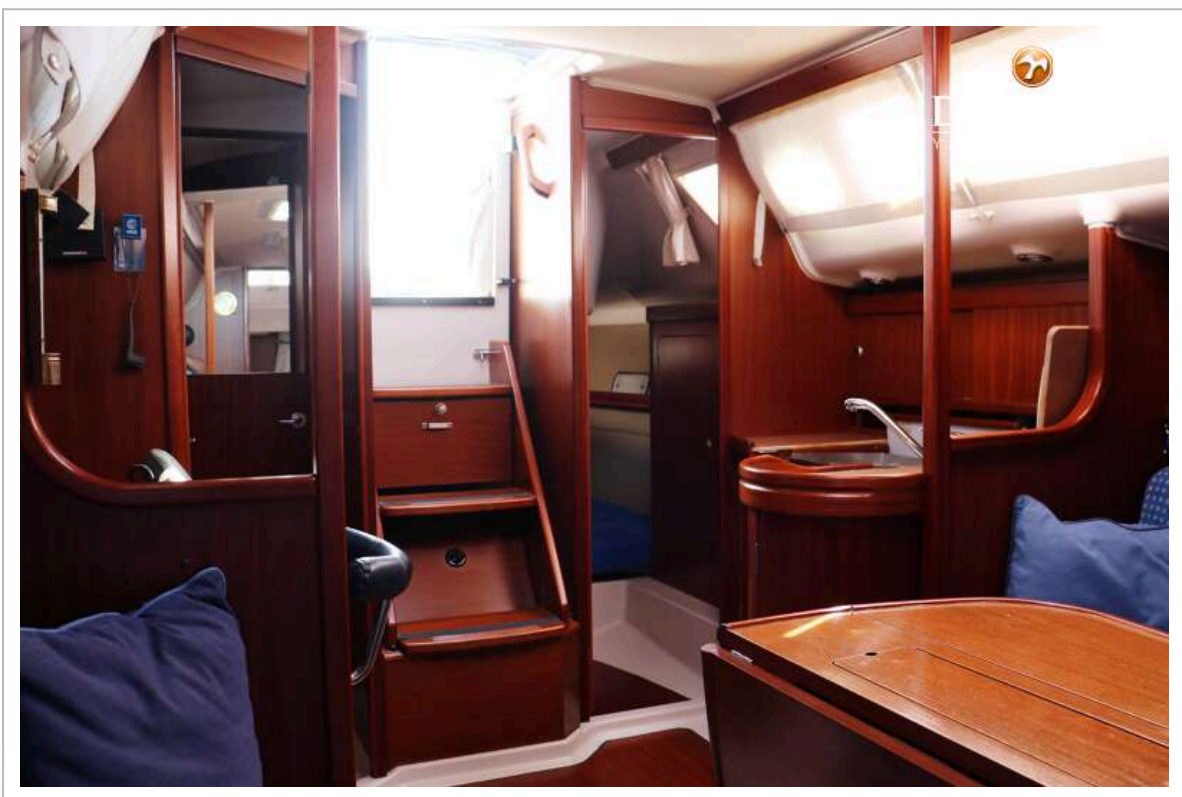
DEHLER 33 CLASSIC



DEHLER 33 CLASSIC



DEHLER 33 CLASSIC



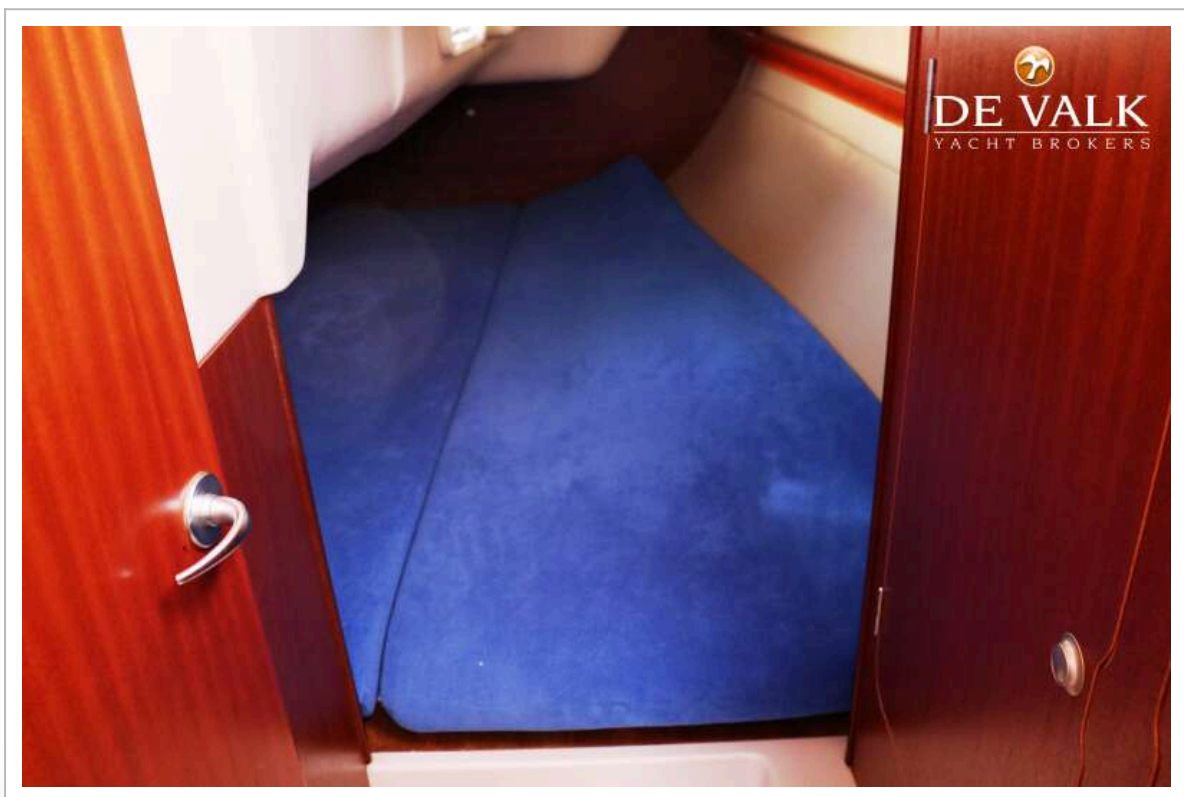
DEHLER 33 CLASSIC



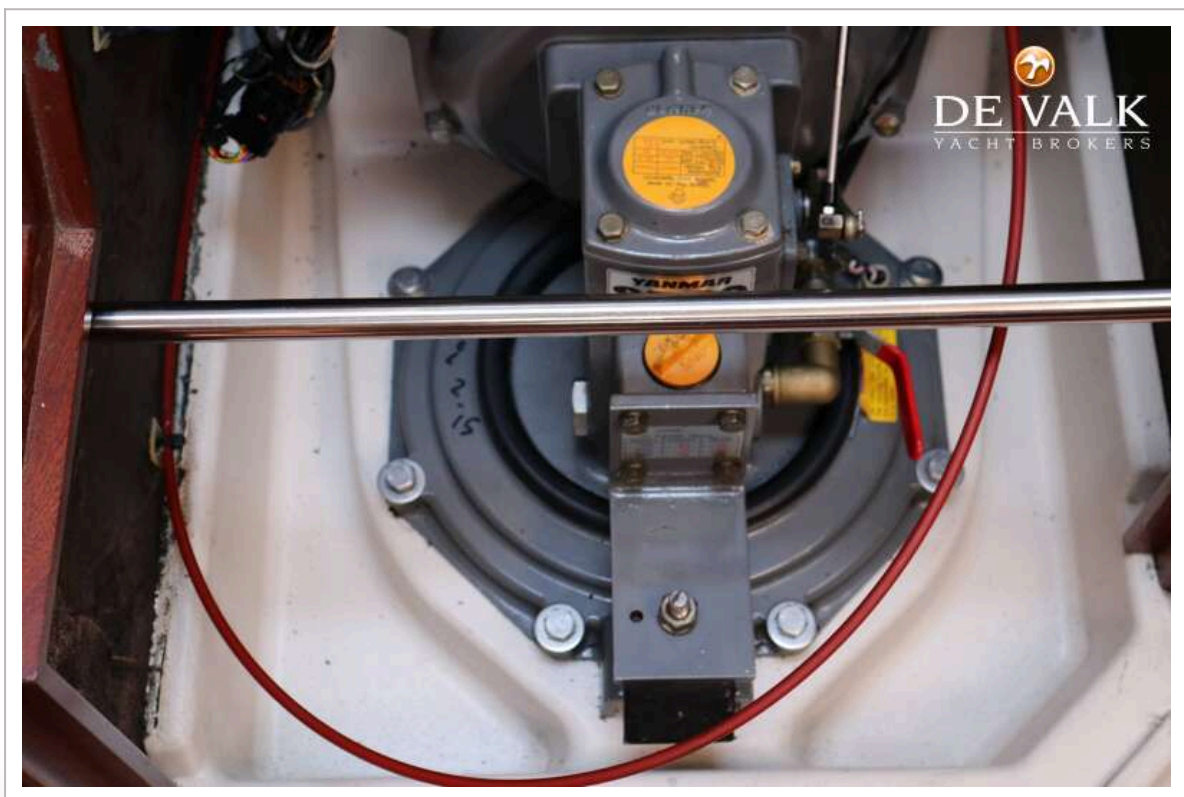
DEHLER 33 CLASSIC



DEHLER 33 CLASSIC



DEHLER 33 CLASSIC



DEHLER 33 CLASSIC

