



DE VALK  
YACHT BROKERS

## LEMSTERLAND KOTTER 16.20 CUSTOM BUILD



DE VALK  
YACHT BROKERS

# LEMSTERLAND KOTTER 16.20 CUSTOM BUILD

## BROKER'S COMMENTS

Well maintained and especially solid built Lemsterland Kotter 16.20 Custom Build designed by "De Haas" in Rotterdam called "Sabina". This trawler is equipped with two very reliable and economical Daf 615 diesel engines, and by her joggled round bilge, this Lemsterland Kotter 16.20 Custom Build has beautiful and stable sailing characteristics. The "Sabina" is equipped with 11 fixed berths and is therefore very suitable for several people to enjoy a comfortable stay.

*Jochem Heijermans*

## SPECIFICATIONS

<b>Dimensions</b>	16.20 x 4.80 x 1.60 (m)	<b>Builder</b>	Scheepswerf Pegebo - Katwijk
<b>Built</b>	1984	<b>Cabins</b>	3
<b>Material</b>	Steel	<b>Berths</b>	10
<b>Engine(s)</b>	2 x Daf 615 diesel	<b>Hp/Kw</b>	2 x 127.00 (hp), 93.35 (kw)
<b>Asking price</b>	sold (VAT )	<b>Lying</b>	elsewhere / Not at sales office

## CONTACT

<b>Sales office</b>	De Valk Belgium	<b>Telephone</b>	+32 586 80 218
<b>Address</b>	1401 PT Nieuwpoort BE	<b>E-mail</b>	belgium@devalk.nl

## DISCLAIMER

These particulars are given in good faith as supplied but cannot be guaranteed.



# LEMSTERLAND KOTTER 16.20 CUSTOM BUILD

## GENERAL

Model	LEMSTERLAND KOTTER 16.20 CUSTOM BUILD
Type	motor yacht
LOA (m)	16,20
Beam (m)	4,80
Draft (m)	1,60
Headroom (m)	2,00
Year built	1984
Builder	Scheepswerf Pegebo - Katwijk
Country	The Netherlands
Designer	De Haas Rotterdam
Displacement (t)	40
Hull material	steel
Hull colour	off-white
Hull thickness (mm)	7.5
Hull shape	round-bilged
Keel type	long keel
Superstructure material	aluminium
Rubbing strake	steel
Deck material	steel
Deck finish	teak Massive
Superstructure deck finish	paint
Cockpit deck finish	teak Massive
Window frame	aluminium
Window material	tempered glass
Portholes	aluminium
Flybridge	yes
Flybridge cover	yes
Radar arch	collapsible
Mast can be lowered	hydraulic
Fuel tank (litre)	steel 1x 1000 keel



Fuel tank 2 (litre)	steel 2x wing tank 1000
Level indicator (fuel tank)	yes
Freshwater tank (litre)	steel 2x 1000
Level indicator (freshwater)	yes
Blackwater tank (litre)	stainless steel 2x 200
Level indicator (blackwater)	yes
Wheel steering	hydraulic
Flybridge helm position	

## ACCOMMODATION

Cabins	3
Berths	10
Interior	mahogany
Floor	wood
Aft deck	yes
Headroom saloon (m)	2m
Heating	electric 220V
Aft Cabin	yes
Dinette	yes
Opening door to aft deck	yes
Galley	yes
Countertop	granite
Sink	stainless steel
Cooker	electric Whirlpool
Gas alarm	Whirlpool
Microwave	yes
Fridge	yes
Hot water system	220V + engine 2x Vetus 75l
Water pressure system	electrical
Owners cabin	double bed + single bed
Bed length (m)	2.00 x 1.60



Wardrobe	hanging/drawers/shelves
Bathroom	shared
Toilet	shared
Toilet system	electric Vetus 2004
Wash basin	at the toilet
Shower	shared
Guest cabin 1	bunk bed 2x
Bed length (m)	4x 2.00 x 0.80
Wardrobe	hanging/drawers/shelves
Guest cabin 2	v-bed 2x
Wardrobe	hanging and drawers

## MACHINERY

No of engines	2
Make	Daf
Type	615
HP	127
kW	93,35
Fuel	diesel
Year installed	1984
Consumption (l/hr)	15
Engine hours	1100
Engine cooling system	freshwater heat exchanger
Drive	shaft
Engine controls	bowden cable
Gearbox	hydraulic
Bowthruster	Kalkman 10pk
Exhaust	watercooled
Thrust bearing	yes
Propeller type	fixed
Propeller blades	4



# LEMSTERLAND KOTTER 16.20 CUSTOM BUILD

Propeller shaft material	stainless steel
Shaft lubrication	grease
Electric bilge pump	yes
Electrical installation	12V/24V/220V
Generator	silent separator Mitsubishi 12Kva
Start battery	2x 12V/180Ah
Service battery	2x 12V/230Ah
Generator battery	yes
Bowthruster battery	yes
Battery charger	Victron Skylla 24V/30Amp
Inverter	yes
Battery charger/inverter	1x Victron Phoenix Multi 24V/1600W/40Amp
Insulation transformer	Victron

## NAVIGATION

Electric compass	Furuno NavNet VX2
Forw. looking depth sounder	Furuno FCV - 582L
Fish finder	Furuno FCV - 582L
VHF	Sailor
Rudder angle indicator	yes
Radar/GPS/plotter	Furuno NavNet VX2 Navionics Gold
Navigation lights	yes
Searchlight	yes

## EQUIPMENT

Fixed windscreen	yes
Bimini	Hydraulic
Cockpit cushions	yes
Cockpit table	yes
Cockpit chairs	yes
Anchor	



# LEMSTERLAND KOTTER 16.20 CUSTOM BUILD

Windlass	electrical
Capstan	yes
Deck wash	yes
Sea railing	steel + RVS
Grab rail (superstructure)	steel
Pushpit	yes
Pulpit	yes
Lifejackets	yes
Wiper	3x
Horn	electric
Fenders	yes
Mooring lines	yes
Spare parts	yes
TV	yes
TracVision ball	Intellian





# LEMSTERLAND KOTTER 16.20 CUSTOM BUILD

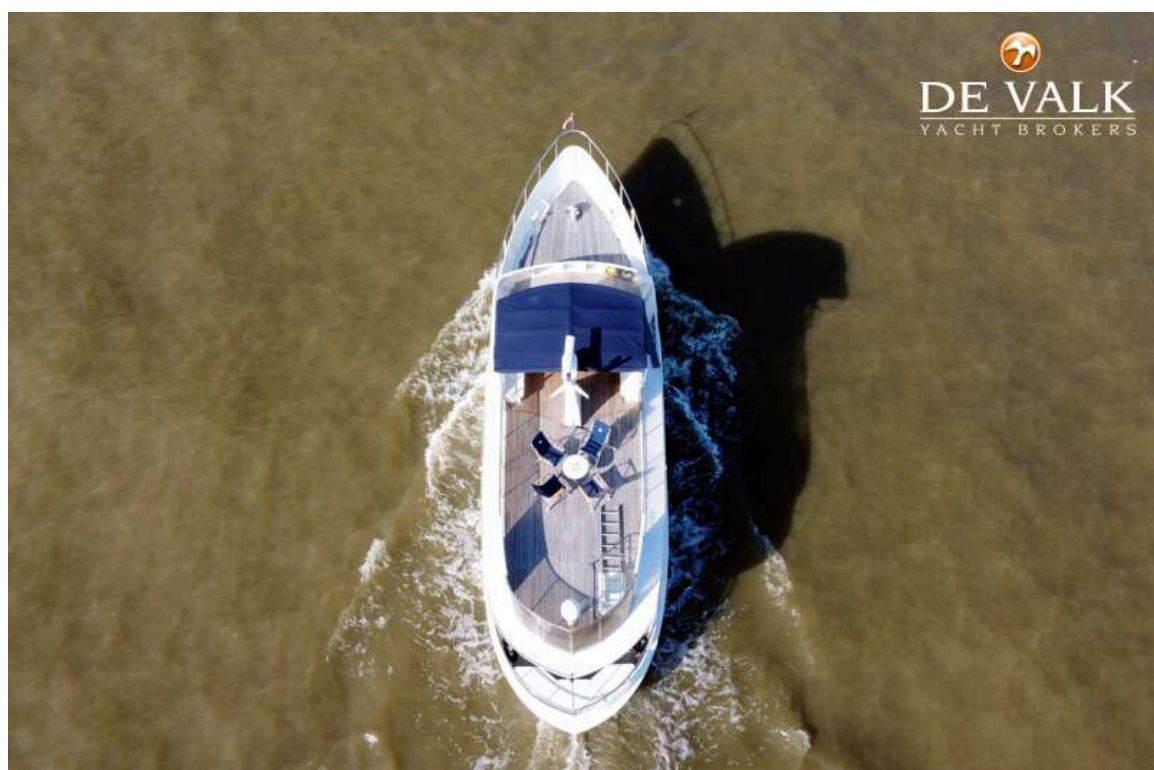




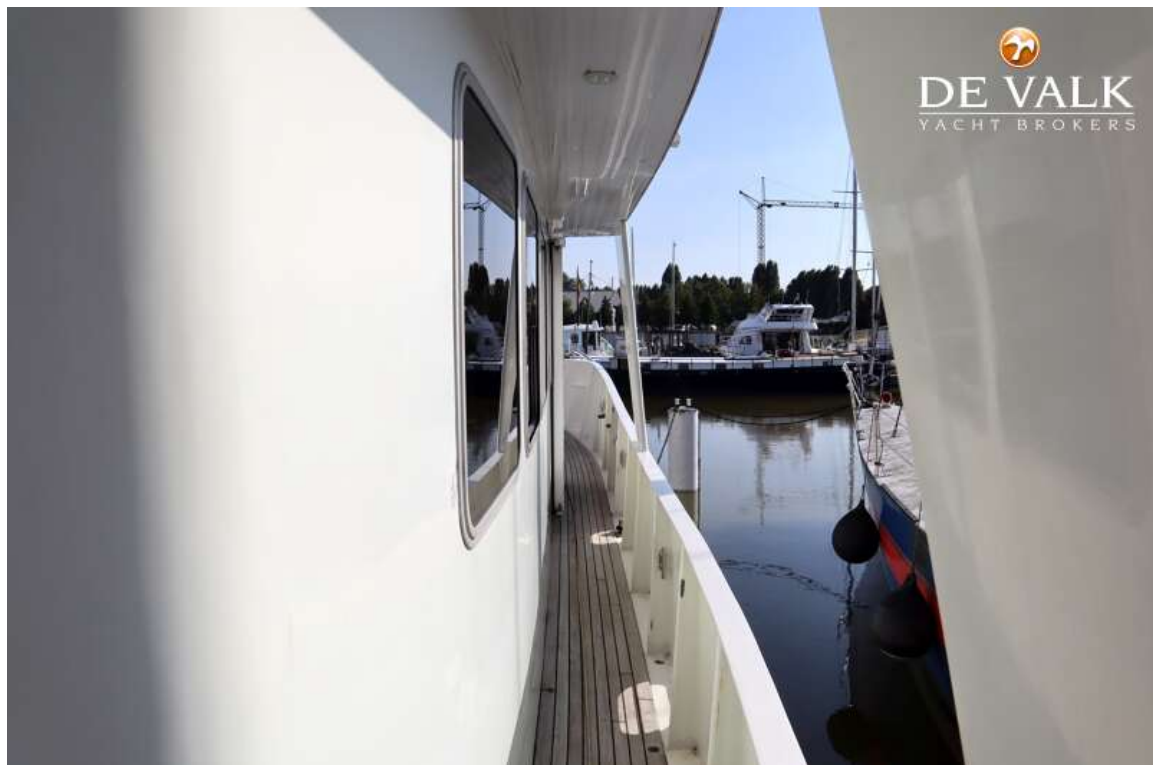
# LEMSTERLAND KOTTER 16.20 CUSTOM BUILD



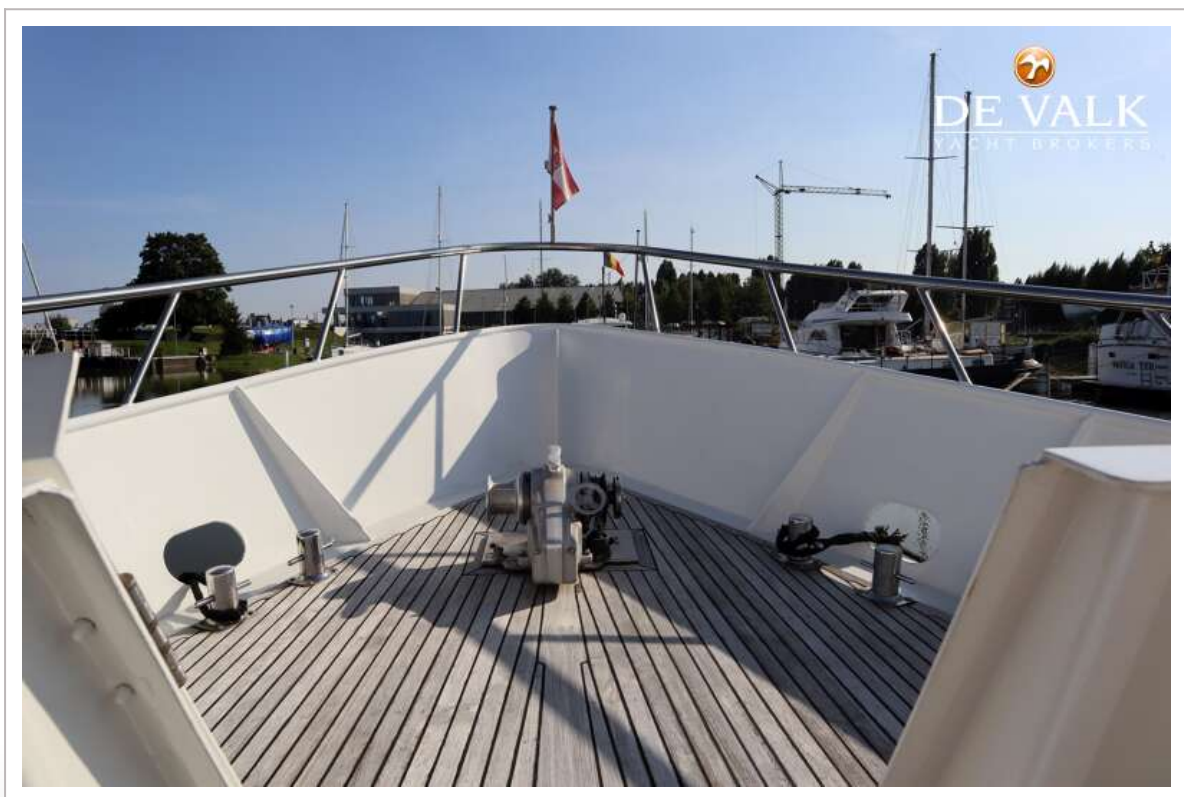
# LEMSTERLAND KOTTER 16.20 CUSTOM BUILD



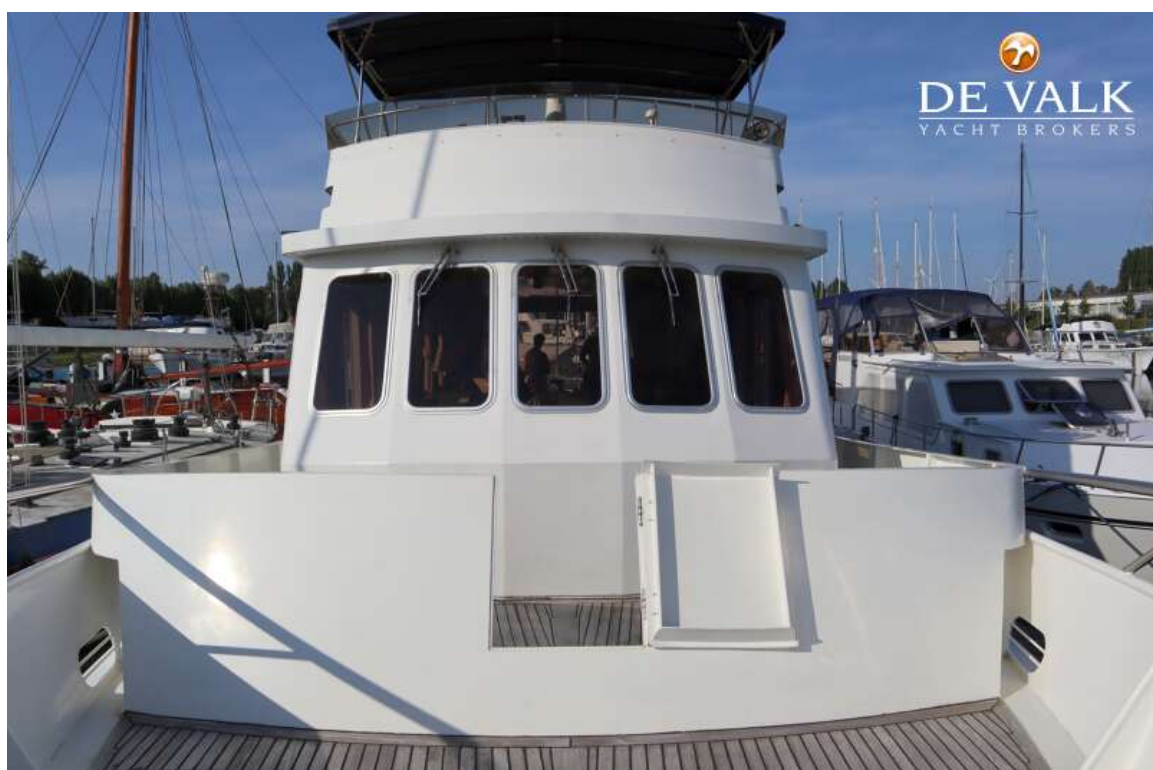




# LEMSTERLAND KOTTER 16.20 CUSTOM BUILD



# LEMSTERLAND KOTTER 16.20 CUSTOM BUILD







# LEMSTERLAND KOTTER 16.20 CUSTOM BUILD





# LEMSTERLAND KOTTER 16.20 CUSTOM BUILD



# LEMSTERLAND KOTTER 16.20 CUSTOM BUILD





# LEMSTERLAND KOTTER 16.20 CUSTOM BUILD

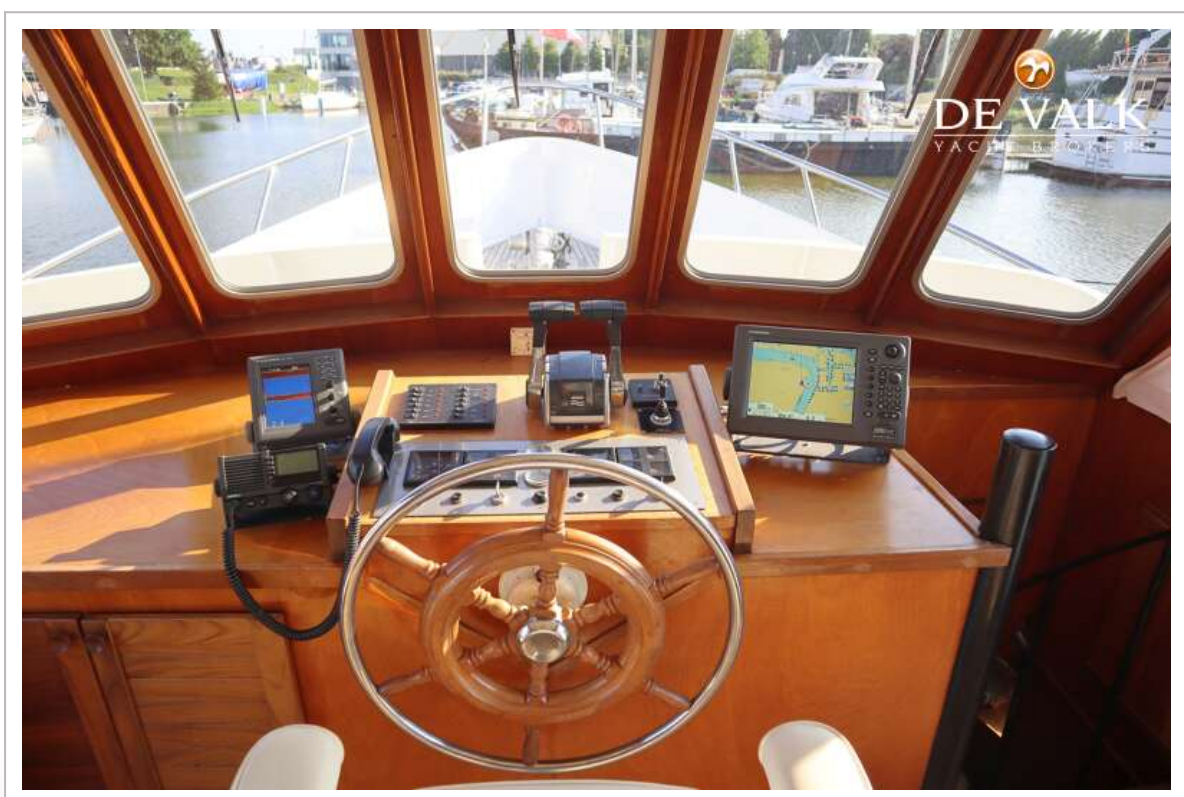


# LEMSTERLAND KOTTER 16.20 CUSTOM BUILD





# LEMSTERLAND KOTTER 16.20 CUSTOM BUILD



# LEMSTERLAND KOTTER 16.20 CUSTOM BUILD

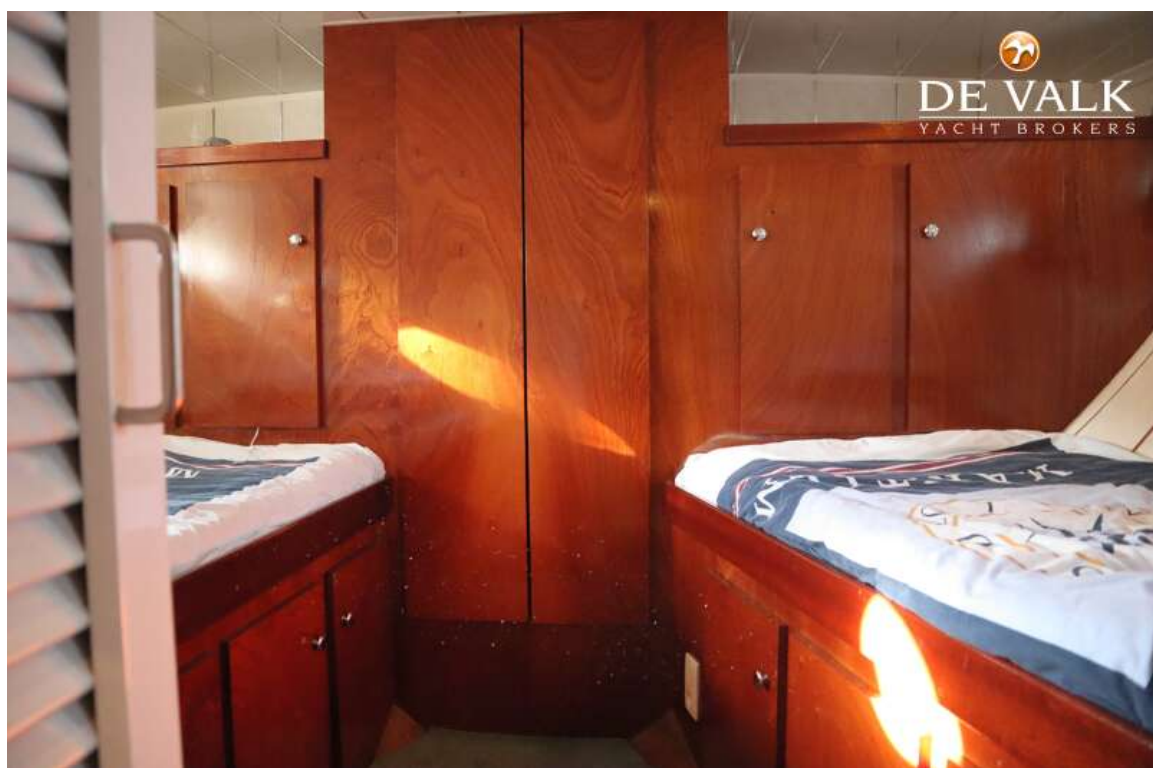
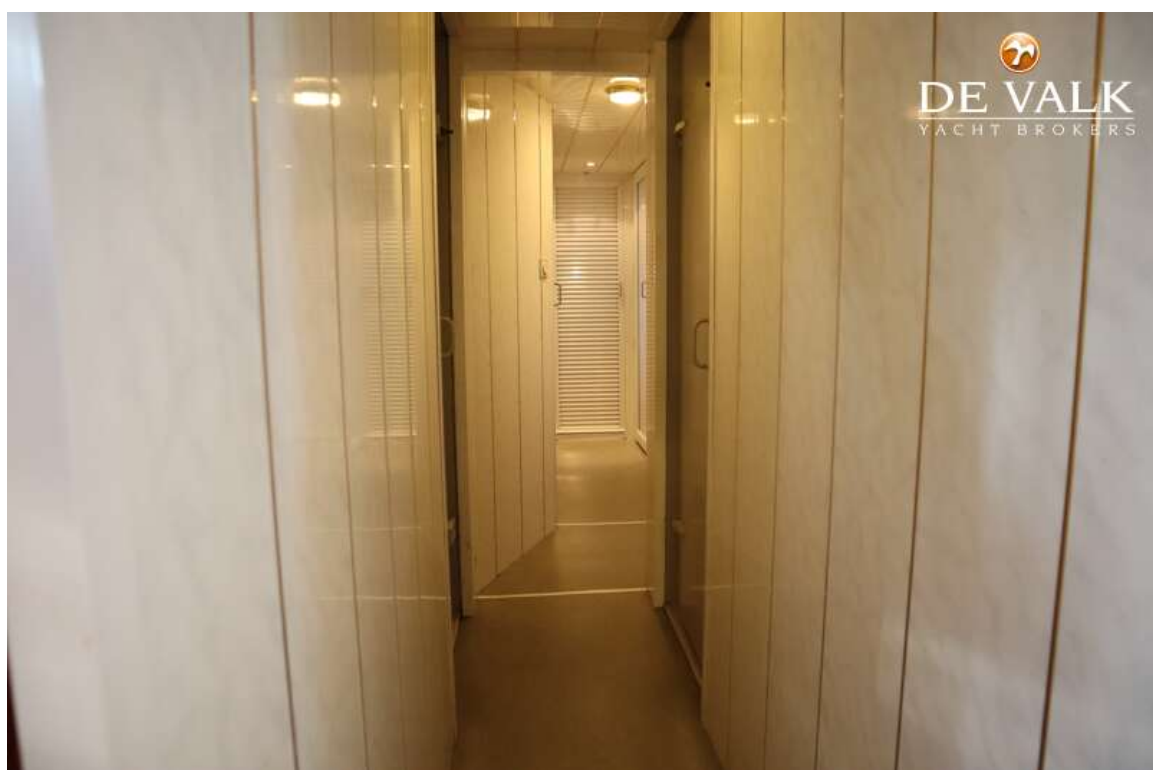




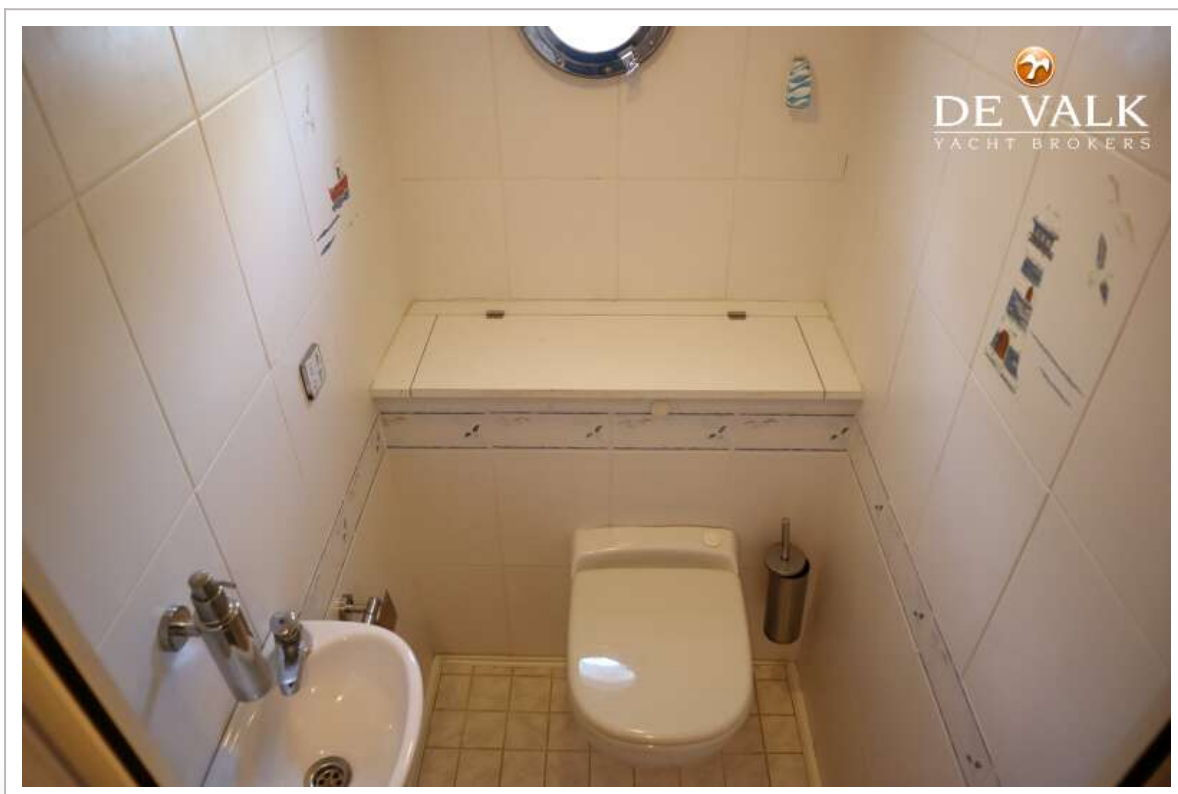
# LEMSTERLAND KOTTER 16.20 CUSTOM BUILD







# LEMSTERLAND KOTTER 16.20 CUSTOM BUILD



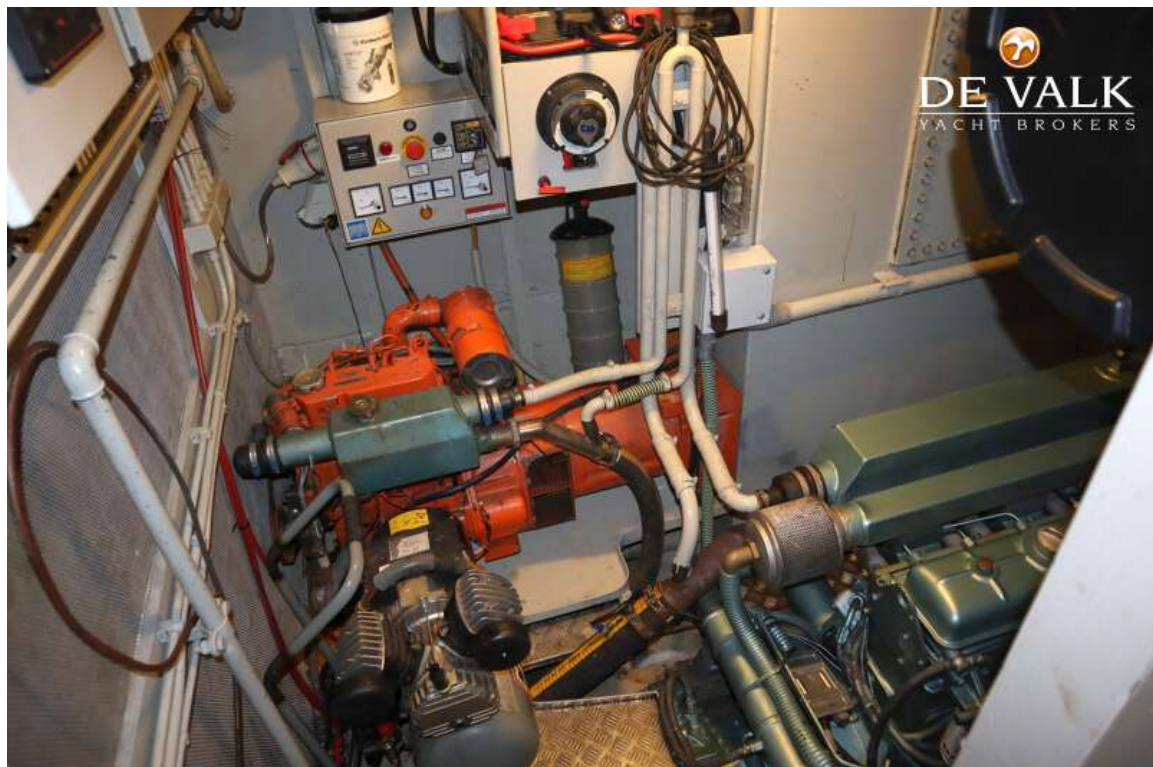
## LEMSTERLAND KOTTER 16.20 CUSTOM BUILD







# LEMSTERLAND KOTTER 16.20 CUSTOM BUILD





# LEMSTERLAND KOTTER 16.20 CUSTOM BUILD

