



DE VALK
YACHT BROKERS



KOMPIJPER CANOE STERN 1650 TRAWLER



DE VALK
YACHT BROKERS

KOMPIER CANOE STERN 1 650 TRAWLER

BROKER'S COMMENTS

This beautiful One Off Kompier Kotter 16.50 "Rosephine" is very solid, overcomplete and finished in all luxury. This beautiful motor yacht is well maintained and has recently undergone an extensive refit. The ship has largely new glazing, a preventive overhauled hydraulic bow thruster, electric cooking and bowthruster remote controled, new kitchen worktop and new upholstery. The entire exterior has been painted. The vessel is equipped with two reliable John Deere engines and two Northern Light generators with very few operating hours.

Mark Hesselmans

SPECIFICATIONS

Dimensions	16.50 x 4.90 x 1.60 (m)	Builder	Kompier Werf, Woerden
Built	1993	Cabins	3
Material	Steel	Berths	7
Engine(s)	2 x John Deere 6068 diesel	Hp/Kw	2 x 180.00 (hp), 132.48 (kw)
Asking price	€ 499.000 (VAT Paid)	Lying	at sales office

CONTACT

Sales office	De Valk Loosdrecht B.V.	Telephone	+31 (0)35 582 90 30
Address	't Breukeleveense Meentje 6 1231LM Loosdrecht / Wijdmeren NL	E-mail	loosdrecht@devalk.nl

DISCLAIMER

These particulars are given in good faith as supplied but cannot be guaranteed.



KOMPIER CANOE STERN 1650 TRAWLER

GENERAL

Model	KOMPIER CANOE STERN 1650 TRAWLER
Type	motor yacht
LOA (m)	16,50
Beam (m)	4,90
Draft (m)	1,60
Air draft min (m)	3,45
Headroom (m)	1,96
Year built	1993
Builder	Kompier Werf, Woerden
Country	The Netherlands
Designer	Behage
Displacement (t)	40
Hull material	steel
Hull colour	white
Hull shape	round-bilged
Keel type	box keel
Superstructure material	steel
Rubbing strake	stainless steel
Deck material	steel
Deck finish	non-skid paint
Superstructure deck finish	non-skid paint
Antifouling (year)	2023 Epifanes Foul Away
Window frame	polymer 2022
Window material	double glazing 2022
Portholes	aluminium Hora
Insulation	glasswool
Flybridge	yes
Radar arch	collapsible
Fuel tank (litre)	stainless steel 2000 L
Fuel tank 2 (litre)	stainless steel 2000 L
Level indicator (fuel tank)	yes
Freshwater tank (litre)	stainless steel 2000 L
Level indicator (freshwater)	yes
Blackwater tank (litre)	steel 500 L
Blackwater tank extraction	pump
Wheel steering	hydraulic
Inside helm position	yes
Outside helm position	hydraulic
More info on paintwork	2022/2023 De IJssel Double Coat



KOMPIER CANOE STERN 1650 TRAWLER

Extra info

Owner's comments Beautiful One Off Kompas Spitsgatkotter of 16.50m. The Rosephine was designed in 1993 by P.B. Behage Yacht Designer built at the renowned Kompas shipyard. The interior of the ship has been reduced to the flame. Everything is built with high quality materials and very well thought out. The client for the construction of this beautiful ship was an industrialist who was closely involved in the development and construction of the ship and left nothing to chance. Upon entering you will find a spacious sitting area and dining table. There is a spacious L-shaped kitchen with all conceivable kitchen appliances such as refrigerator with freezer, combi oven, induction plate with extractor hood, dishwasher and washing machine. Next to the kitchen is a cozy kitchen table with a corner sofa for 5 people where 1 stool can be placed. At the front of the boat is an impressive steering position from where the ship can be steered in complete comfort, even in bad weather. Via the beautiful fixed staircase you reach the lower deck where you will experience a sea of space. In the bow is a spacious owner's cabin, followed by a luxurious bathroom with a bubble bath, sink and electric toilet. The day toilet can be reached from the hallway. The second and third cabin can also be reached from this corridor. The second cabin has a luxurious bunk bed and the third cabin has a luxurious double bed with a desk. All cabins have enough built-in cupboards to store everything neatly. The second and third cabin have a passage to the second bathroom with a spacious shower, double sink and the third electric toilet on board. There is a spacious fly bridge where you can sit and sail in good weather. From the fly bridge you have a nice overview and you look over the reed collars and into the landscape where you sail past and you can enjoy the sun. This Kompas has wide gangways and a Portuguese bridge. The aft deck is covered so that you can walk or sit dry even in the rain or drizzle. The current owner liked to sit with guests on the spacious foredeck. Both on the fly bridge and on the foredeck you can enjoy a drink, after which a dinner can be enjoyed in all comfort. This ship is a second home on the water! With the ship you can make wonderful trips or use the ship for living on board. The ship can be sailed with two people. The ship has been built very thoughtfully, with no expense or effort spared. The most exclusive materials have been used. The propulsion takes place by two very solid and economical running 6068 John Deere engines with only 1100 hours on the counter. The two main engines also power the professional hydraulic system on tap. The steering of the ship works through the hydraulic system, which also drives the anchor winch and the hydraulic bow thruster. In addition to the rock-solid John Deere power sources for propulsion, the ship has two Northern Light generators (the small one with 130 hours and the large one with only 50 hours on the counter). A Kabola CV provides the heating and there is also air conditioning on board so that the ship can be used comfortably all year round. The Rosephine has had a complete refit in 2022/2023, so there will be no major maintenance on the agenda in the coming years and you can immediately start enjoying this ship. The entire paint job outside has been done. New windows with special insulated frames have been installed all around (ideal for use also in winter). The professional bow thruster has been preventively completely overhauled by the manufacturer who supplied it. There is also a beautiful new Neolith kitchen worktop with kitchen tap, a new dishwasher and a new fridge with freezer. The carpets and curtains have also been completely renewed. All engines were serviced in early 2023 and new heavy-duty Bosch starter batteries have been installed, making the ship ready for years of new adventure with you. In addition to the employees of De Valk, the current owner can tell you everything about this beautiful ship. He knows the ship down to the last detail and also knows which parties have been involved in the construction and maintenance of this ship. Everything has been done with the utmost care and attention as was also used by the client for the construction of this beautiful ship. The owner still has a lot of documentation about the ship in storage.



KOMPIER CANOE STERN 1 650 TRAWLER

ACCOMMODATION

Cabins	3
Berths	7
Interior	oak White wash
Floor	carpet 2023
Open cockpit	yes
Pilot house	yes
Deck saloon	yes
Saloon	yes
Headroom saloon (m)	+/- 1,96 m
Heating	diesel ducted hot air Kabola
Air-conditioning	single cycle airco
Opening door to cockpit	Teak varnished
Galley	yes
Countertop	Neolith 2023
Sink	stainless steel
Microwave/oven combi	Bauknecht
Fridge	2023 Isotherm
Freezer	In Fridge
Hot water system	on central heating Kabola
Water pressure system	electrical
Dishwasher	2023
Owners cabin	French bed
Bed length (m)	2,00 x 1,90
Wardrobe	hanging and shelves
Bathroom	en suite
Toilet	en suite
Toilet system	electric
Wash basin	in the bathroom
Bath tub	en suite
Jacuzzi	In the bathroom



KOMPIER CANOE STERN 1 650 TRAWLER

Guest cabin 1	double bed
Bed length (m)	2,00 x 1,95
Wardrobe	shelves
Bathroom	shared
Toilet	shared
Toilet system	electric
Wash basin	in the bathroom
Shower	shared
Guest cabin 2	bunk bed
Bed length (m)	1,95x1,05
Wardrobe	shelves
Toilet	shared
Toilet system	electric
Wash basin	at the toilet
Washing machine	Candy
Flybridge	yes

MACHINERY

No of engines	2
Make	John Deere
Type	6068
HP	180
kW	132.48
Fuel	diesel
Year installed	1993
Year of overhaul	April 2023 both engines and generators serviced
Engine hours	1127 & 1122
Engine cooling system	hopper cooling
Drive	shaft
Shaft seal	yes
Engine controls	electrical



KOMPIER CANOE STERN 1 650 TRAWLER

Gearbox	hydraulic
Bowthruster	hydraulic Overhauled in 2023
Exhaust	dry
Propeller type	fixed
Propeller blades	4
Propeller shaft material	stainless steel
Shaft lubrication	oilbath
Electric bilge pump	Jabsco
Bilge alarm	yes
Electrical installation	12/24/220
Generator	Northern Light
Running hours generator	50
Generator 2	Northern Light
Running hours generator 2	214
Batteries	yes
Start battery	2023 2x Bosch Heavy Duty
Service battery	4x
Generator battery	2x Bosch
Battery monitor	Mastervolt
Battery charger	24/100
Inverter	Mastervolt
Diode battery combiners	yes
Shorepower	with cable

NAVIGATION

Electric compass	Logic Combi
Depth sounder	Logic Combi
Log	Logic Combi
Windset	Logic Combi
VHF	Shipmate RS 8300
Autopilot	VDO



KOMPIER CANOE STERN 1 650 TRAWLER

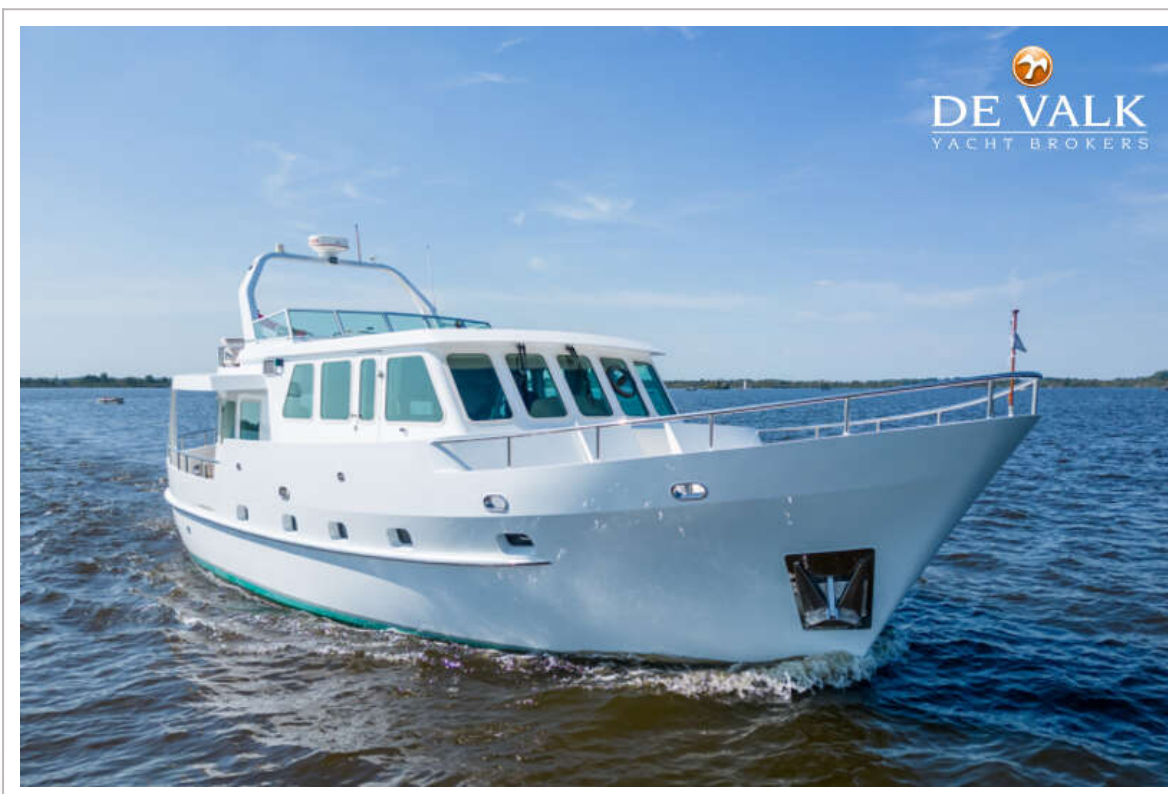
Rudder angle indicator	yes
Radar	yes
Navigation lights	yes

EQUIPMENT

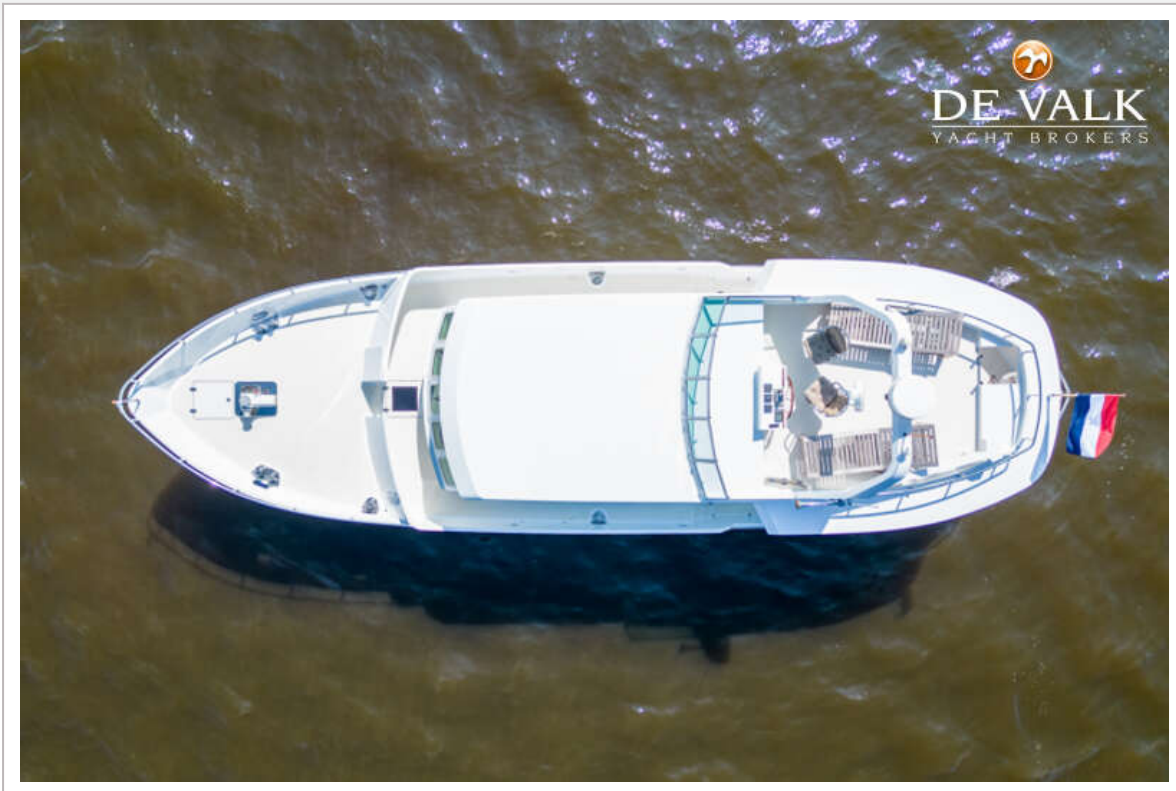
Cockpit table	yes
Cockpit chairs	yes
Anchor	yes
Anchor chain	yes
Windlass	electrical 24V
Deck wash	yes
Deck crane	electric Not Connected
Sea railing	stainless steel
Railing side opening gates	yes
Wiper	3x electric
Clearview window	yes
Window heating	yes
Horn	air pressure
Horn cover	yes
Fenders	yes
Mooring lines	yes
TV	yes



KOMPIER CANOE STERN 1650 TRAWLER



KOMPIER CANOE STERN 1650 TRAWLER



KOMPIER CANOE STERN 1650 TRAWLER



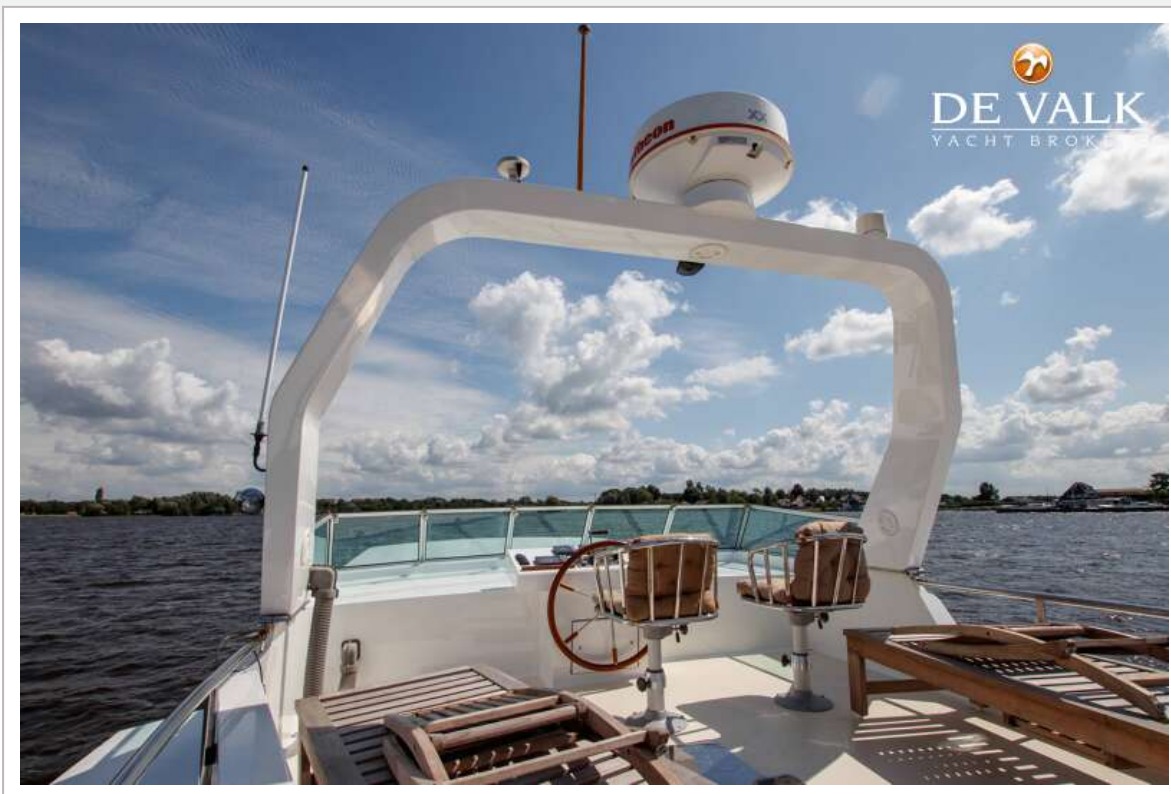
KOMPIER CANOE STERN 1650 TRAWLER



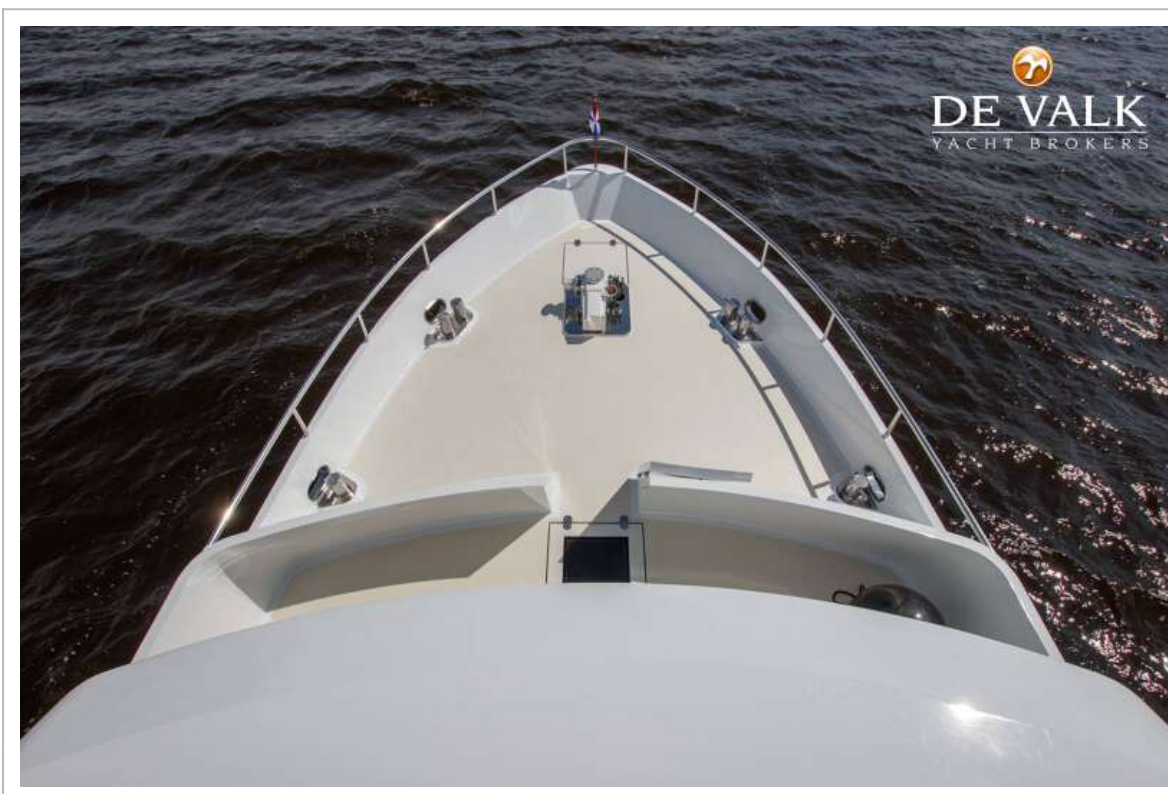
KOMPIER CANOE STERN 1650 TRAWLER



KOMPIER CANOE STERN 1650 TRAWLER



KOMPIER CANOE STERN 1650 TRAWLER



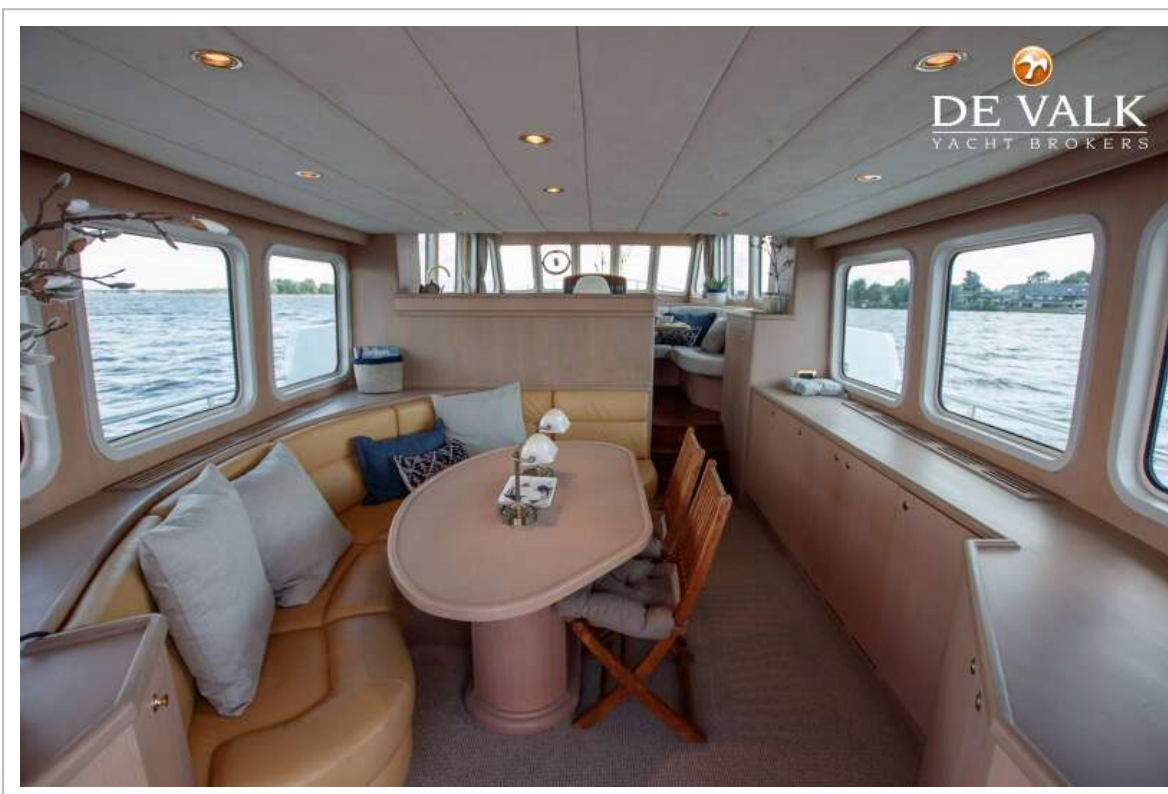
KOMPIER CANOE STERN 1650 TRAWLER



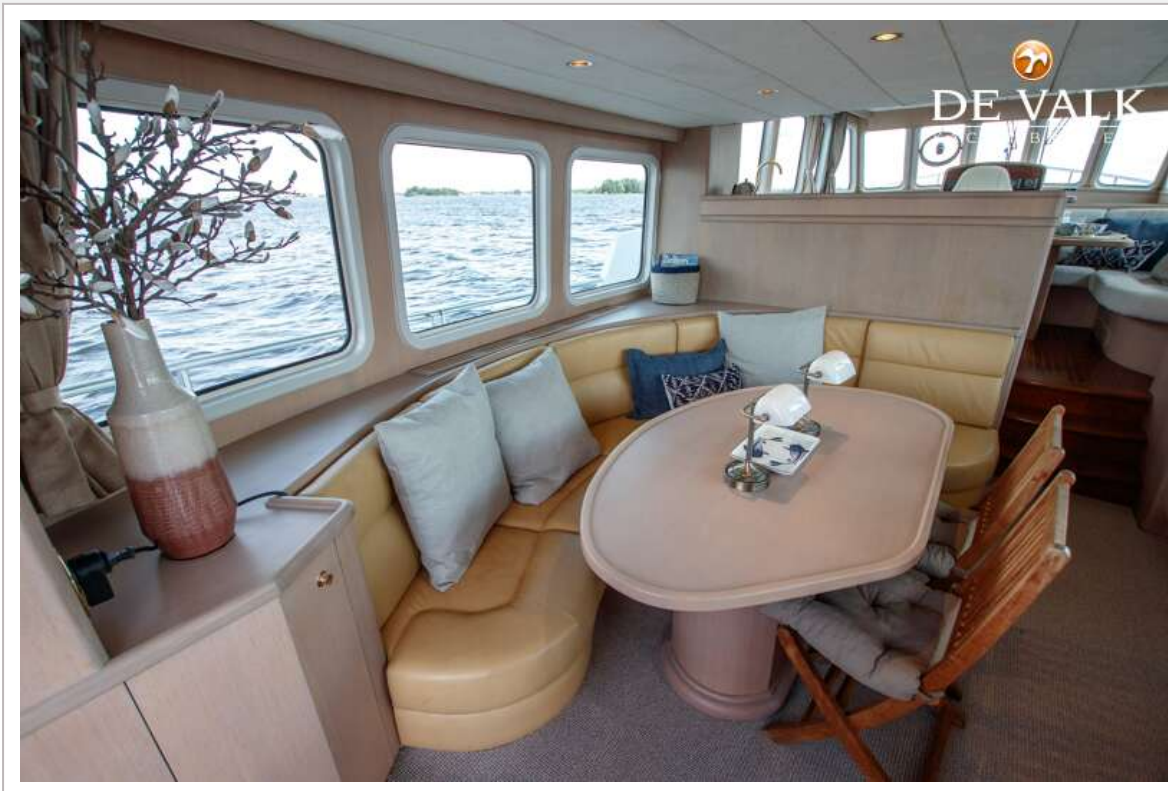
KOMPIER CANOE STERN 1650 TRAWLER



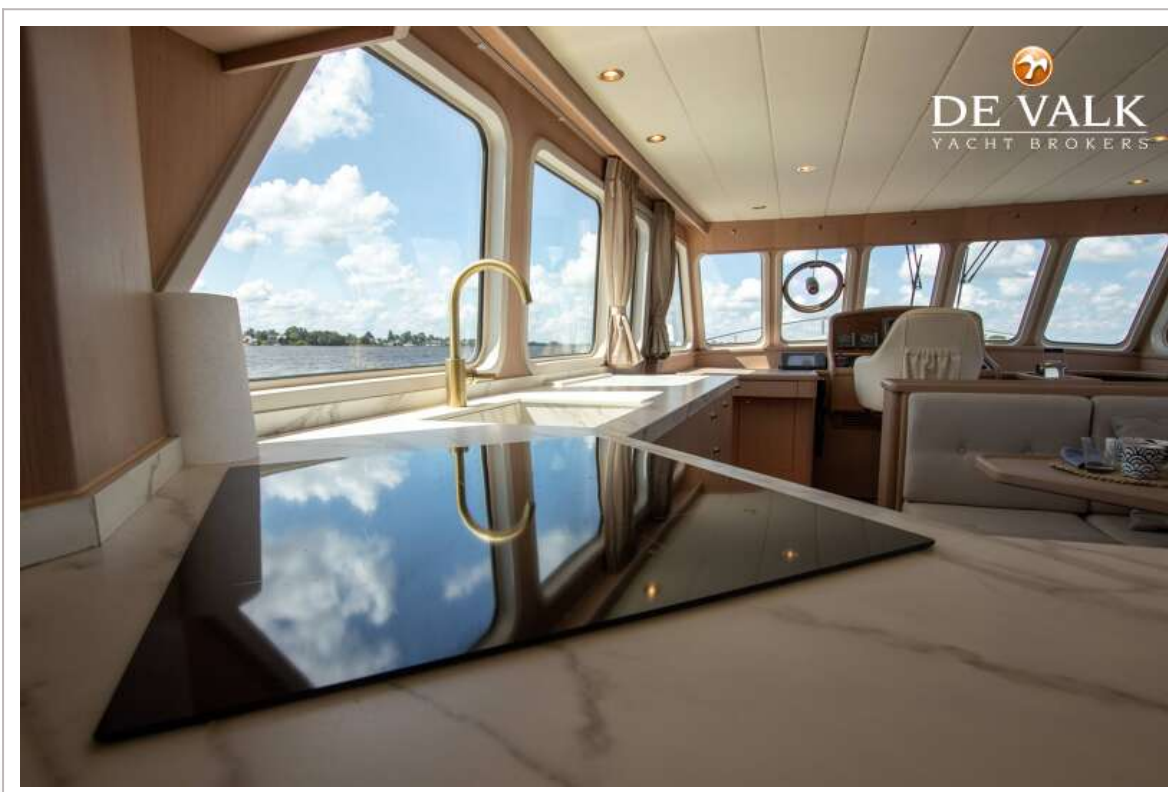
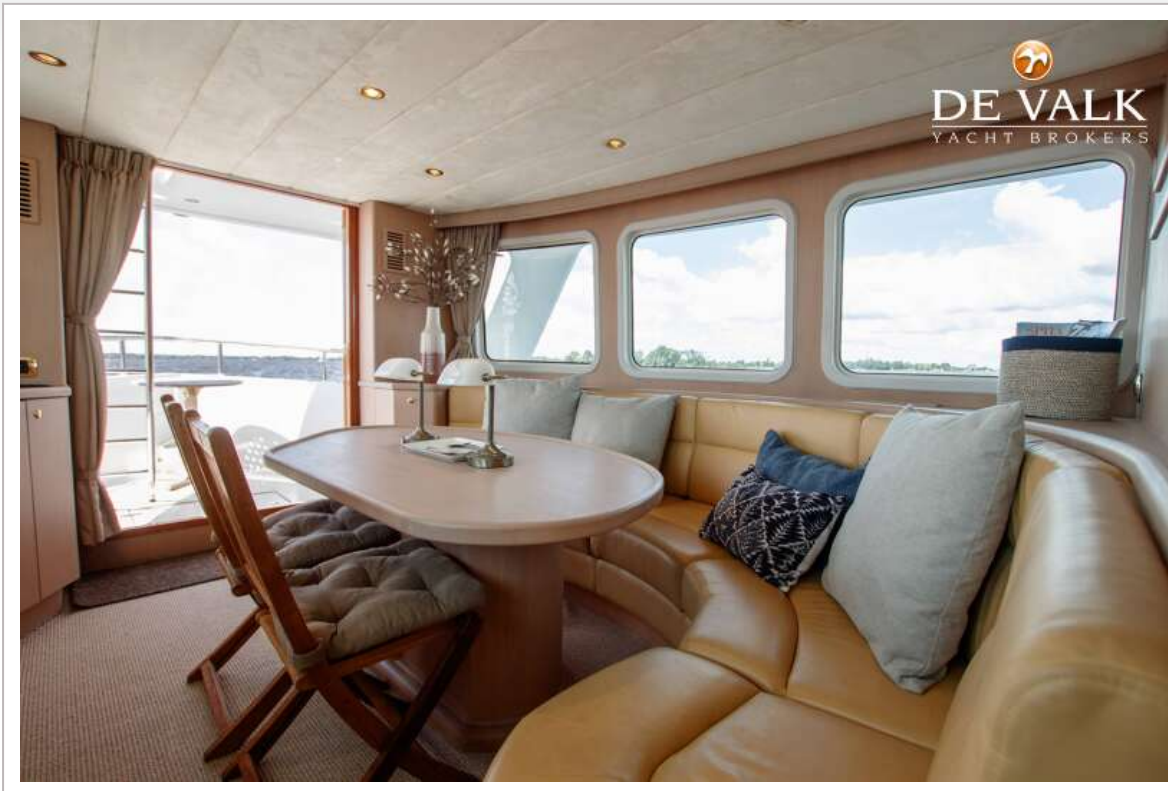
KOMPIER CANOE STERN 1650 TRAWLER



KOMPIER CANOE STERN 1650 TRAWLER



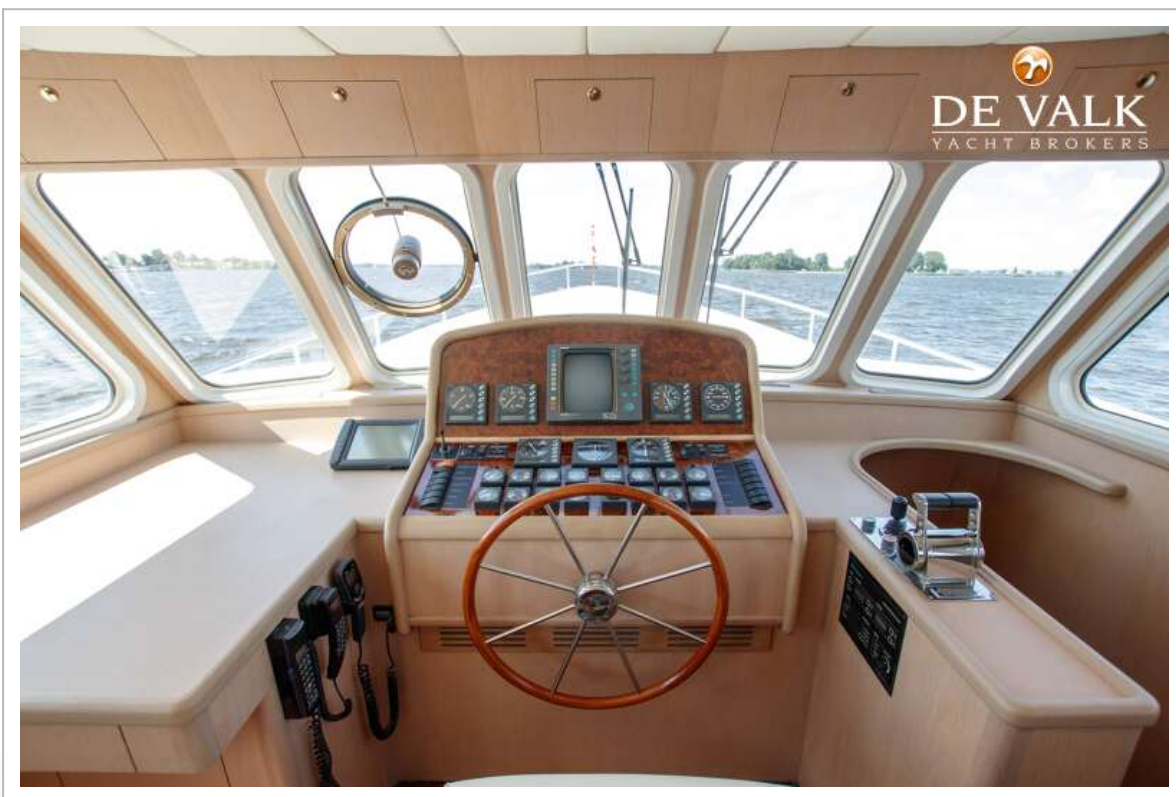
KOMPIER CANOE STERN 1650 TRAWLER



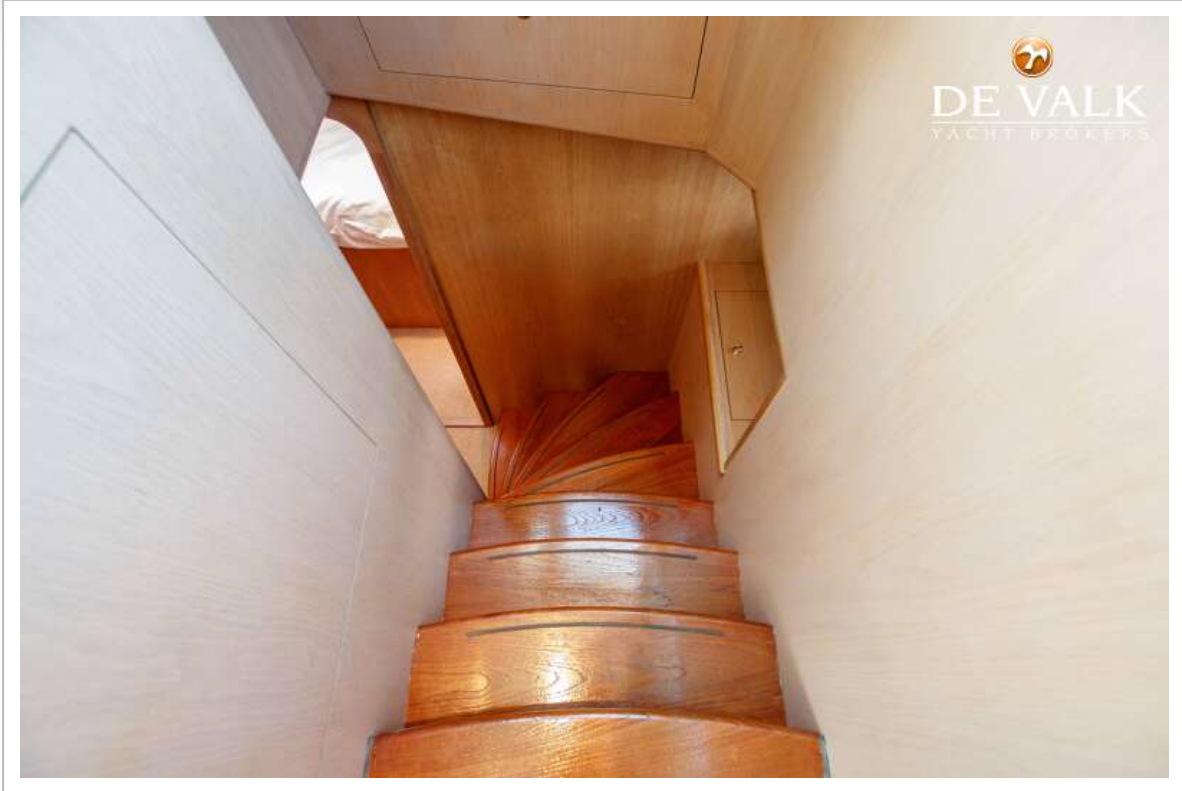
KOMPIER CANOE STERN 1650 TRAWLER



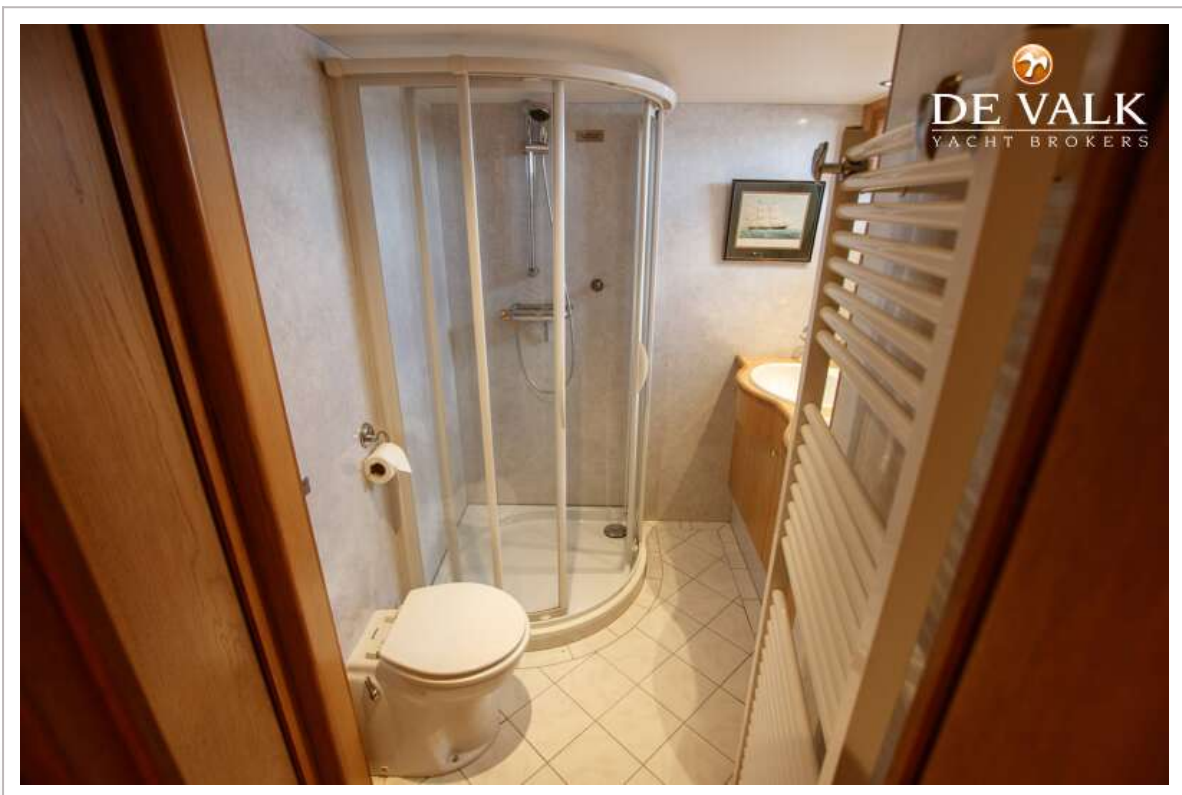
KOMPIER CANOE STERN 1650 TRAWLER



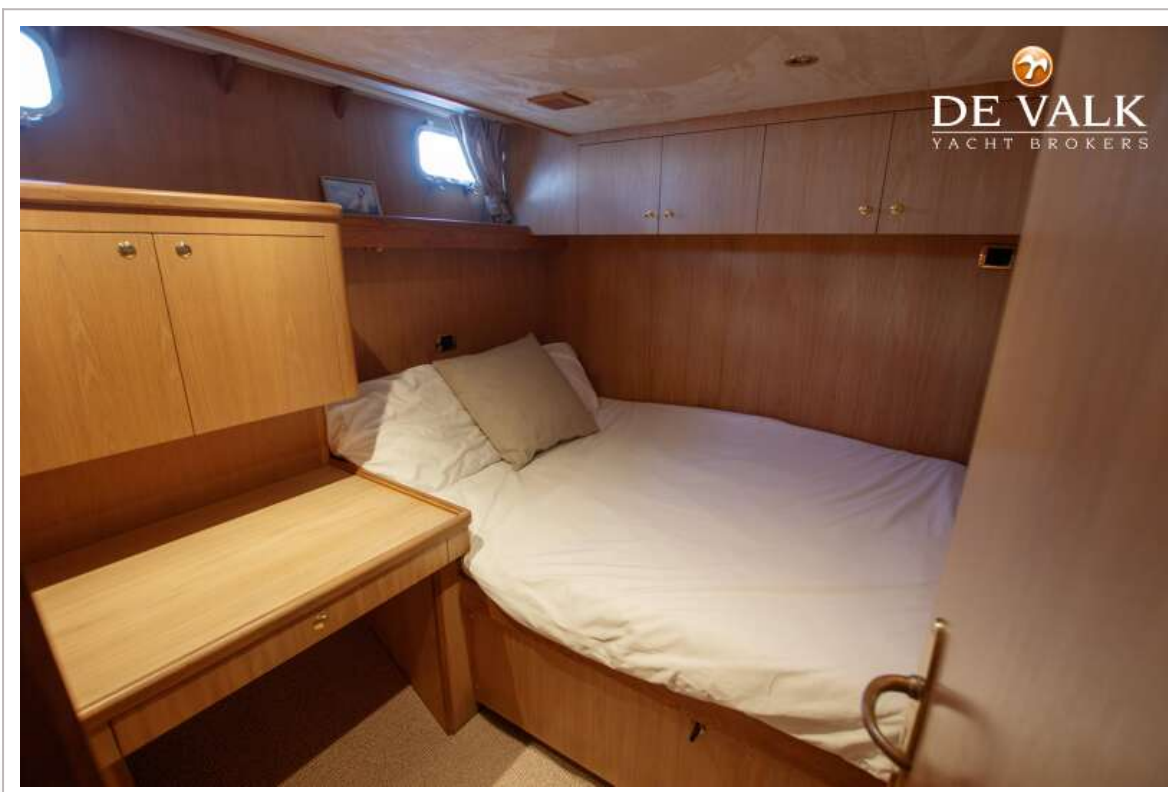
KOMPIER CANOE STERN 1650 TRAWLER



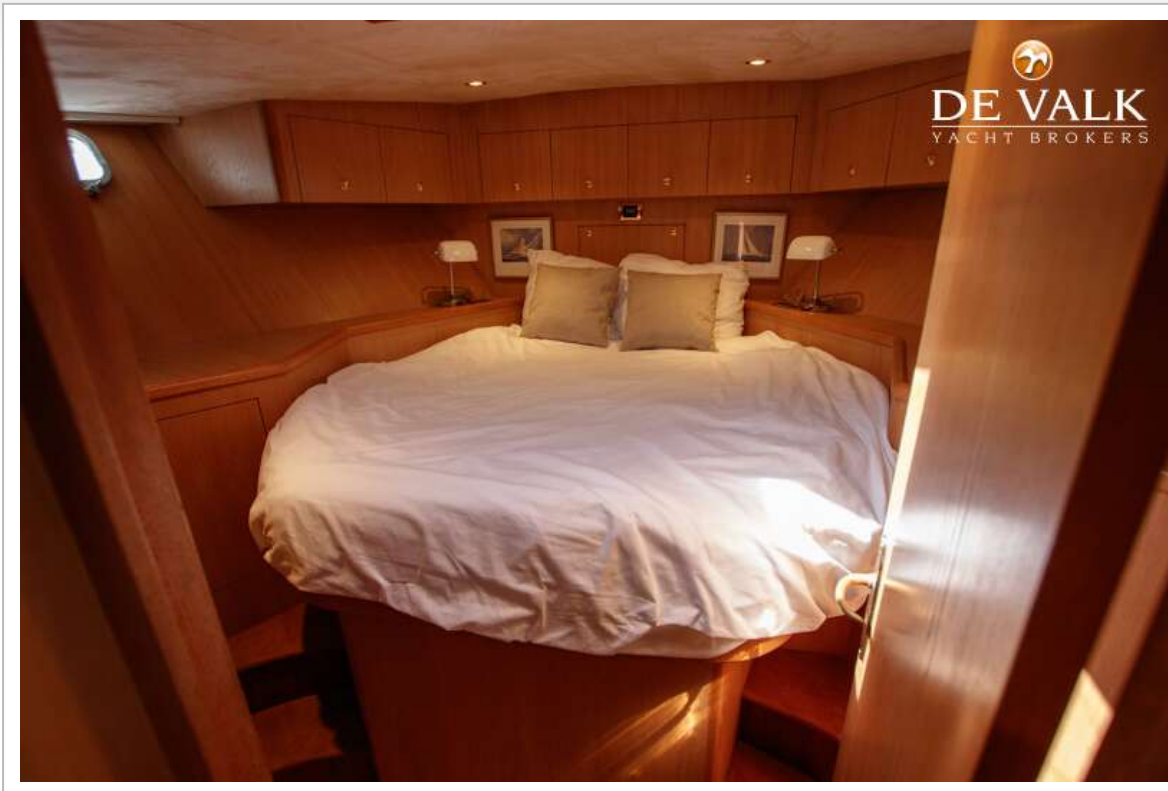
KOMPIER CANOE STERN 1650 TRAWLER



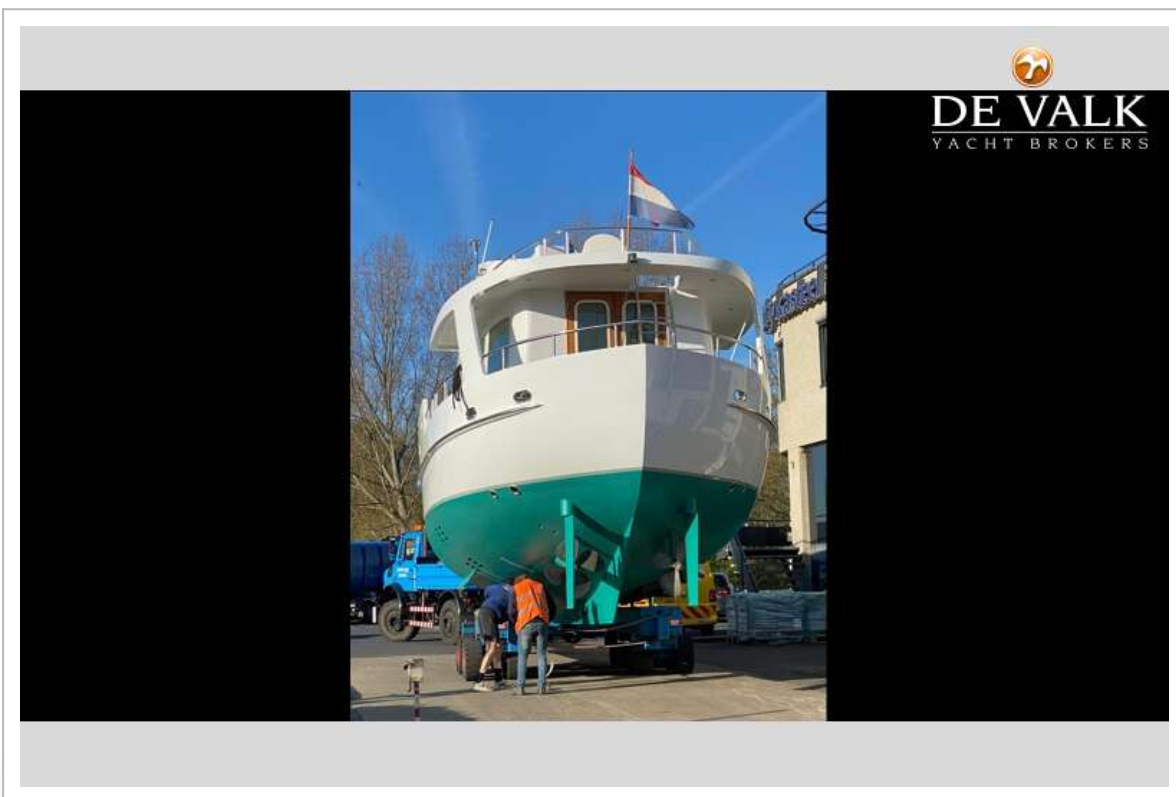
KOMPIER CANOE STERN 1650 TRAWLER



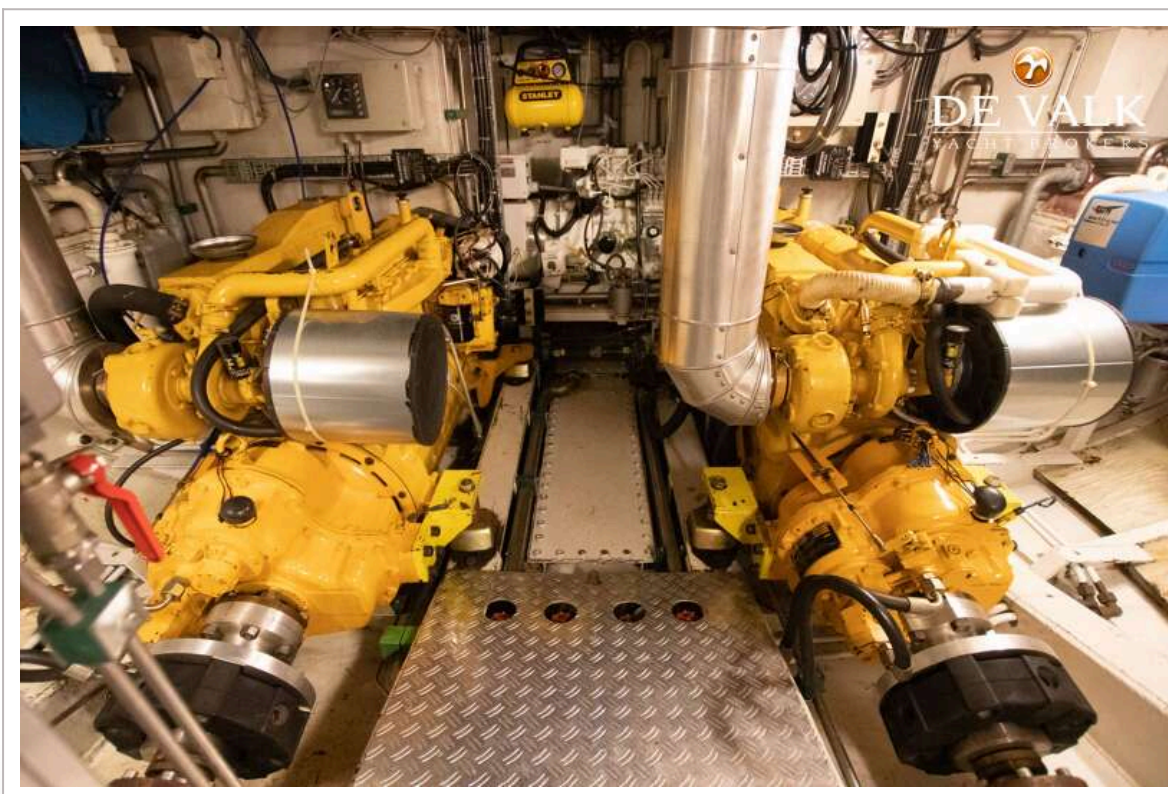
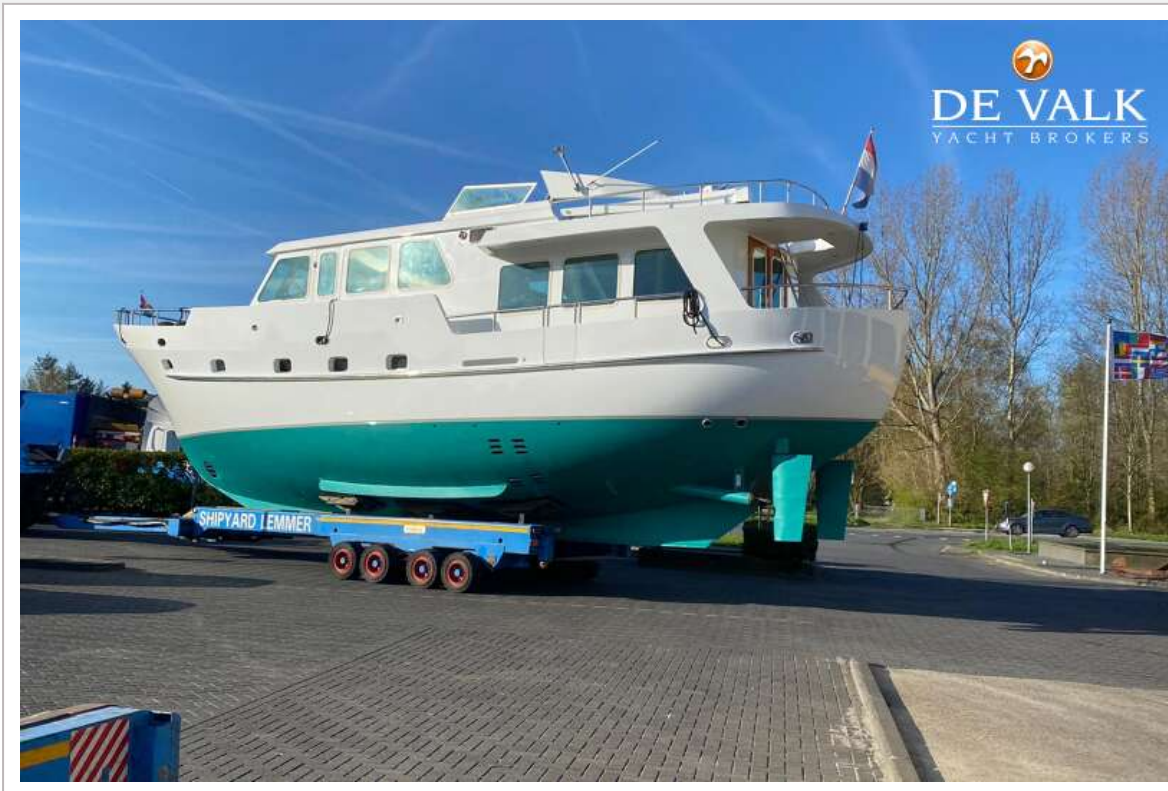
KOMPIER CANOE STERN 1650 TRAWLER



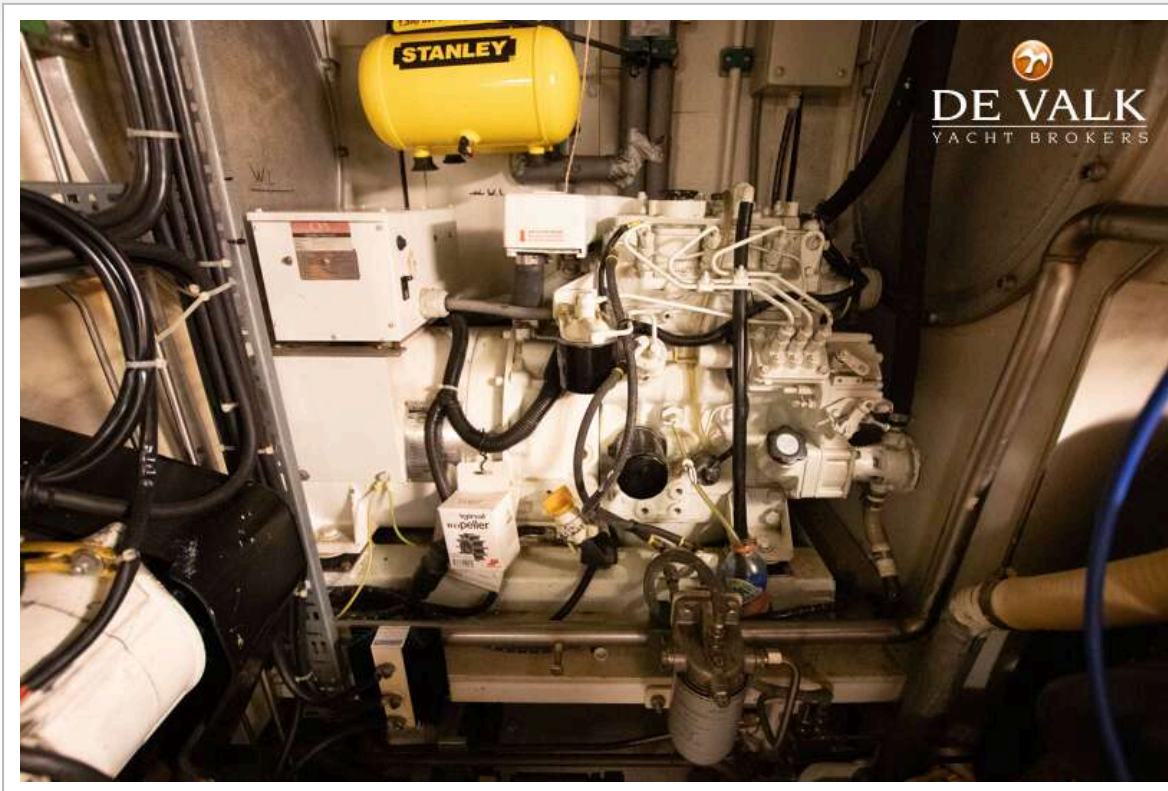
KOMPIER CANOE STERN 1650 TRAWLER



KOMPIER CANOE STERN 1650 TRAWLER



KOMPIER CANOE STERN 1650 TRAWLER



KOMPIER CANOE STERN 1650 TRAWLER

