



DE VALK  
YACHT BROKERS



BLOEMSMA ZEILKOTTER ALUMINIUM



DE VALK  
YACHT BROKERS

## BROKER'S COMMENTS

This aluminium-built Bloemsma Cutter was launched at the renowned shipyard in 1994. The ship was built with the aim of making fast and comfortable long journeys, but also suits to sail smaller waterways. In the time between 2020 and 2022 the ship is completely refitted. And among other things, equipped with a new engine, completely repainted, equipped with a new Webasto CV, the batteries renewed and also the upholstery and curtains renewed. The rig and sails are designed to be used in every type of weather. This Bloemsma cutter can be visited in our sales marina in Loosdrecht.

*Mark Hesselmans*

## SPECIFICATIONS

|                     |                         |                |                        |
|---------------------|-------------------------|----------------|------------------------|
| <b>Dimensions</b>   | 11.90 x 3.60 x 1.50 (m) | <b>Builder</b> | Bloemsma               |
| <b>Built</b>        | 1994                    | <b>Cabins</b>  | 1                      |
| <b>Material</b>     | Aluminium               | <b>Berths</b>  | 4                      |
| <b>Engine(s)</b>    | 1 x Solé Mini-44 diesel | <b>Hp/Kw</b>   | 42.00 (hp), 30.91 (kw) |
| <b>Asking price</b> | € 167.500 (VAT Paid)    | <b>Lying</b>   | at sales office        |

## CONTACT

|                     |  |                  |                      |
|---------------------|--|------------------|----------------------|
| <b>Sales office</b> | De Valk Loosdrecht   | <b>Telephone</b> | +31 35 582 90 30     |
| <b>Address</b>      | 't Breukeleveense Meentje 6<br>1231 LM Loosdrecht / Wijdmeren<br>The Netherlands | <b>E-mail</b>    | loosdrecht@devalk.nl |

## DISCLAIMER

These particulars are given in good faith as supplied but cannot be guaranteed.



## GENERAL

|                                    |  |
|------------------------------------|--|
| <b>Model</b>                       | BLOEMSMA ZEILKOTTER ALUMINIUM            |
| <b>Type</b>                        | sailing yacht                            |
| <b>LOA (m)</b>                     | 11,90                                    |
| <b>Beam (m)</b>                    | 3,60                                     |
| <b>Draft (m)</b>                   | 1,50                                     |
| <b>Year built</b>                  | 1994                                     |
| <b>Builder</b>                     | Bloemsma                                 |
| <b>Country</b>                     | The Netherlands                          |
| <b>Hull material</b>               | aluminium                                |
| <b>Hull colour</b>                 | blue                                     |
| <b>Hull shape</b>                  | S-bilged Joggled-built                   |
| <b>Keel type</b>                   | long keel                                |
| <b>Superstructure material</b>     | aluminium                                |
| <b>Rubbing strake</b>              | aluminum                                 |
| <b>Deck material</b>               | aluminium                                |
| <b>Deck finish</b>                 | non-skid paint                           |
| <b>Superstructure deck finish</b>  | paint                                    |
| <b>Cockpit deck finish</b>         | teak                                     |
| <b>Antifouling (year)</b>          | 2022                                     |
| <b>Window frame</b>                | aluminium                                |
| <b>Window material</b>             | glass Tinted with wrap                   |
| <b>Portholes</b>                   | aluminium                                |
| <b>Insulation</b>                  | foam                                     |
| <b>Mast can be lowered</b>         | electric                                 |
| <b>Fuel tank (litre)</b>           | aluminium 300                            |
| <b>Level indicator (fuel tank)</b> | + sight gage                             |
| <b>Fuel daytank (litre)</b>        | aluminium Filled via a handpump 75 litre |
| <b>Level indicator (daytank)</b>   | sight gage                               |
| <b>Freshwater tank (litre)</b>     | aluminium 300                            |
| <b>Blackwater tank (litre)</b>     |  |



|                                   |   |
|-----------------------------------|---|
| <b>Blackwater tank extraction</b> | pump Pump renewed in 2022   |
| <b>Wheel steering</b>             | hydraulic   |
| <b>Inside helm position</b>       | yes   |
| <b>Outside helm position</b>      | hydraulic   |
| <b>Emergency tiller</b>           | yes   |
| <b>More info on paintwork</b>     | the complete boat has been painted with De IJssel Double Coat in 2022 |

## ACCOMMODATION

|                                      |   |
|--------------------------------------|---|
| <b>Cabins</b>                        | 1   |
| <b>Berths</b>                        | 4   |
| <b>Interior</b>                      | teak  |
| <b>Floor</b>                         | teak and holly  |
| <b>Open cockpit</b>                  | yes   |
| <b>Pilot house</b>                   | yes   |
| <b>Headroom saloon (m)</b>           | 1.95  |
| <b>Heating</b>                       | central heating Webasto Thermo Top Evo 2022   |
| <b>Dinette to convert into berth</b> | Dinette in pilothouse new upholstery in 2022 + additional watch berth above dinette |
| <b>Opening door to cockpit</b>       | teak  |
| <b>Galley</b>                        | yes   |
| <b>Countertop</b>                    | marble  |
| <b>Sink</b>                          | stainless steel   |
| <b>Cooker</b>                        | calor gas Gimballed   |
| <b>Oven</b>                          | calor gas Gimballed, needs maintenance  |
| <b>Fridge</b>                        | compressor  |
| <b>Hot water system</b>              | on central heating  |
| <b>Water pressure system</b>         | electrical  |
| <b>Owners cabin</b>                  | v-bed   |
| <b>Wardrobe</b>                      | hanging and shelves   |
| <b>Toilet</b>                        | shared Electric 2022  |
| <b>Toilet system</b>                 | electric  |



**Shower** shared

## MACHINERY

**No of engines** 1  
**Make** Solé  
**Type** Mini-44  
**HP** 42  
**kW** 30.91  
**Fuel** diesel  
**Year installed** 2021  
**Engine hours** 58  
**Engine cooling system** freshwater heat exchanger  
**Drive** shaft  
**Engine controls** bowden cable  
**Gearbox** hydraulic  
**Exhaust** watercooled  
**Propeller type** fixed  
**Propeller shaft material** stainless steel  
**Electric bilge pump** Jabsco 2022  
**Start battery** 1x 2021  
**Service battery** 2x 2021  
**Battery charger** Vetus 30A  
**Solar panel** Not connected  
**Diode battery combiners** 2021  
**Shorepower** with cable  
**Extra info** The fresh water, blackwater and bilge pumps are renewed in 2022

## NAVIGATION

**Compass** yes  
**Depth sounder** Sonar via phone application



|                   |           |
|-------------------|-----------|
| Depth sounder/log | Tacktick  |
| Autopilot         | Raymarine |
| Navtex            | yes       |
| Navigation lights | yes       |

## EQUIPMENT

|                            |                                       |
|----------------------------|---------------------------------------|
| Bimini                     | yes                                   |
| Anchor                     | CQR Plough                            |
| Anchor chain               | yes                                   |
| Windlass                   | electrical Remote + dashboard control |
| Sea railing                | wire                                  |
| Railing side opening gates | yes                                   |
| Pushpit                    | yes                                   |
| Pulpit                     | yes                                   |
| Wiper                      | yes                                   |
| Horn                       | electric Stainless                    |
| Fenders                    | yes                                   |
| Mooring lines              | yes                                   |

## RIGGING

|                      |   |
|----------------------|---|
| Rigging              | ketch                                     |
| Standing rigging     | wire                                      |
| Brand mast           | Seldén                                    |
| Material mast        | aluminium                                 |
| Spreaders            | yes                                       |
| Mast lowering system | windlass                                  |
| Mainsail             | De Vries Sails as new                     |
| Mainsail cover       | Checked in 2022 + lazy bag and lazy jacks |
| Mizzen               | De Vries Sails as new                     |
| Mizzen sailcover     | Checked in 2022 + lazy bag and lazy jacks |
| Genoa                | De Vries Sails on furler as new           |



|                           |   |
|---------------------------|---|
| <b>Genoa furler</b>       | yes   |
| <b>Staysail</b>           | De Vries sails as new   |
| <b>Staysail furler</b>    | yes   |
| <b>Boomvang</b>           | tackle  |
| <b>Genoa sheetwinches</b> | Lewmar self tailing bronze  |
| <b>Extra info</b>         | All running rigging can be controlled from the cockpit.   |
| <b>Extra info</b>         | The rigging was chosen to be extra heavy. This is partly due to the first owner's aspirations to make a circum navigation with this ship. |





# BLOEMSMA ZEILKOTTER ALUMINIUM





# BLOEMSMA ZEILKOTTER ALUMINIUM





# BLOEMSMA ZEILKOTTER ALUMINIUM

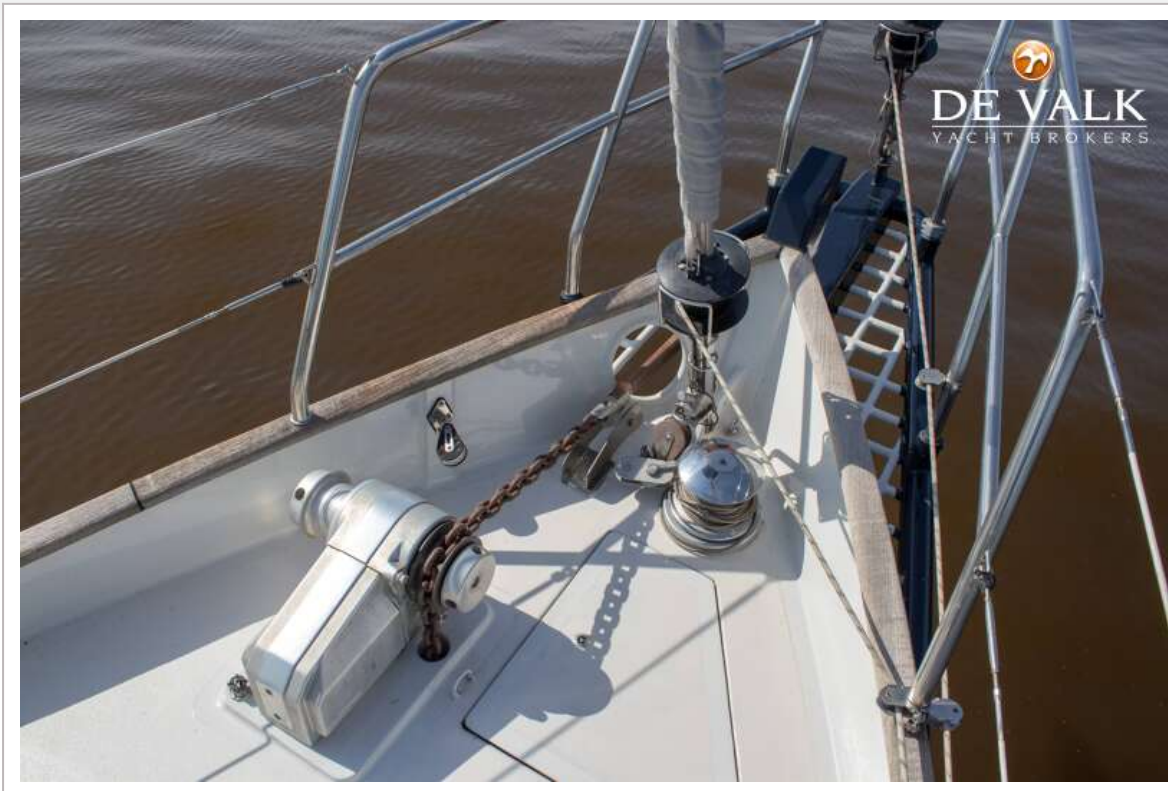




# BLOEMSMA ZEILKOTTER ALUMINIUM



# BLOEMSMA ZEILKOTTER ALUMINIUM

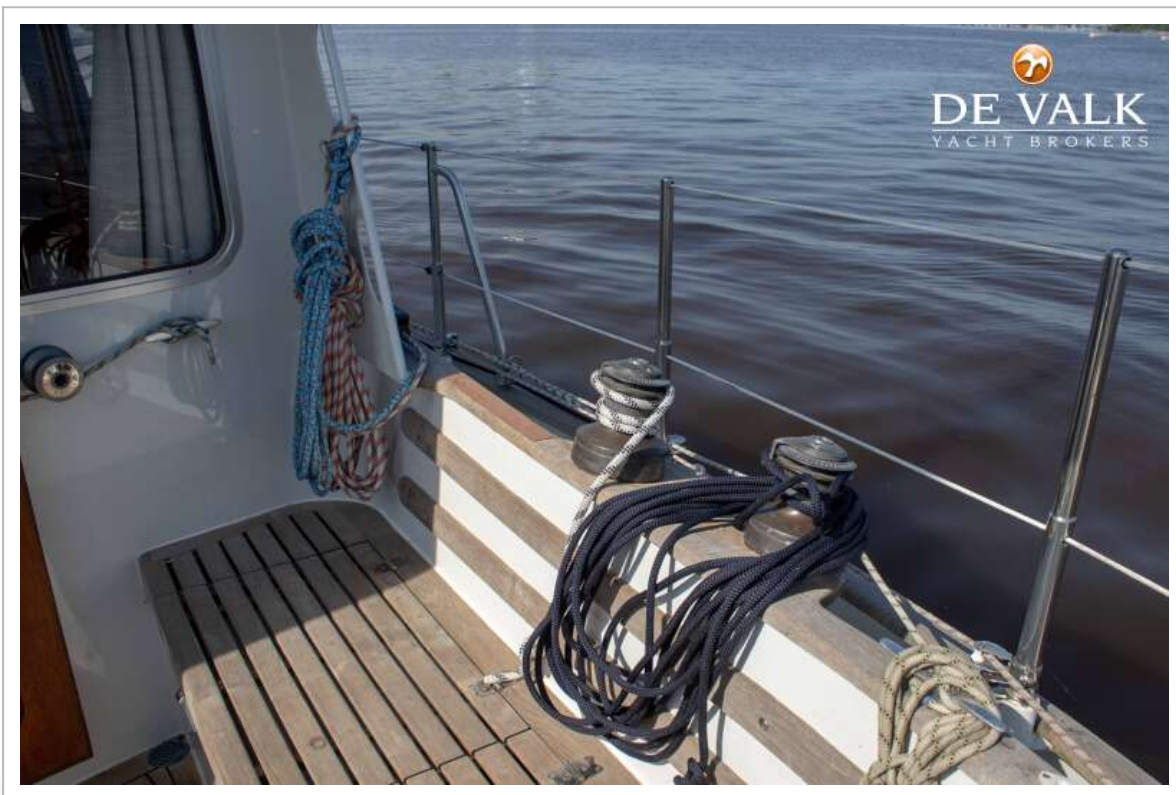




# BLOEMSMA ZEILKOTTER ALUMINIUM



# BLOEMSMA ZEILKOTTER ALUMINIUM

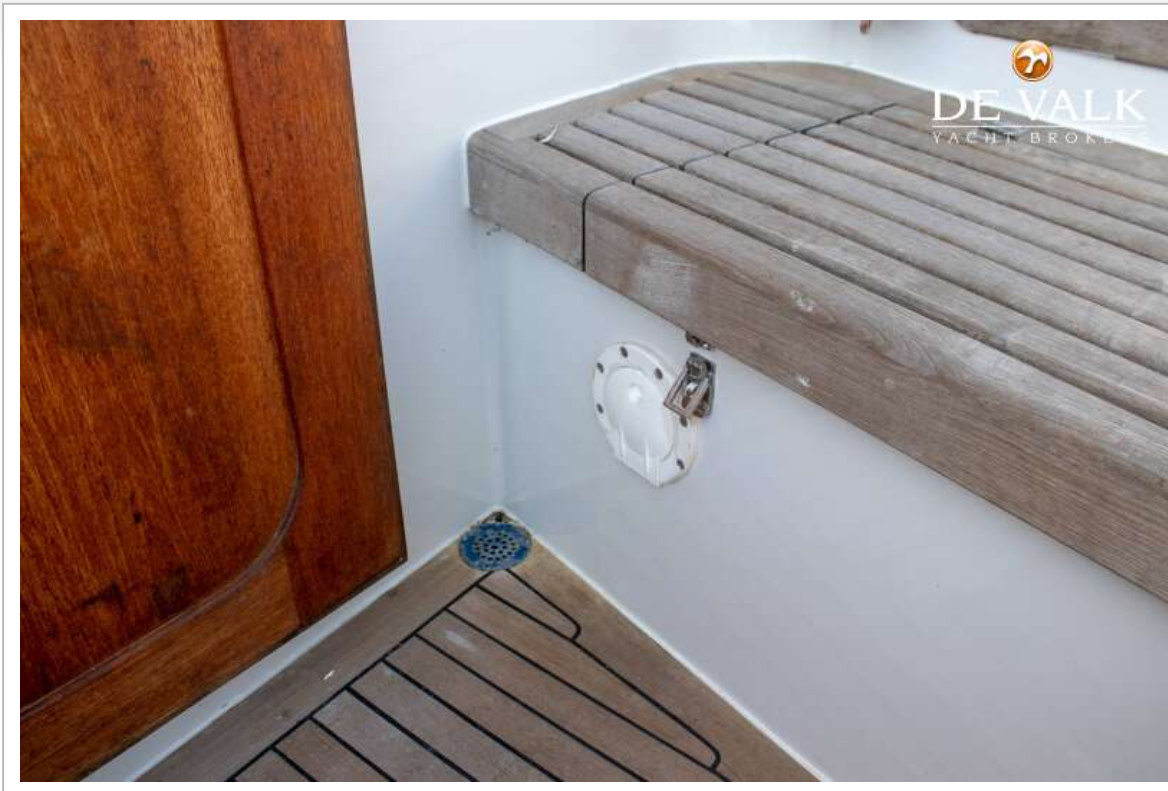




# BLOEMSMA ZEILKOTTER ALUMINIUM

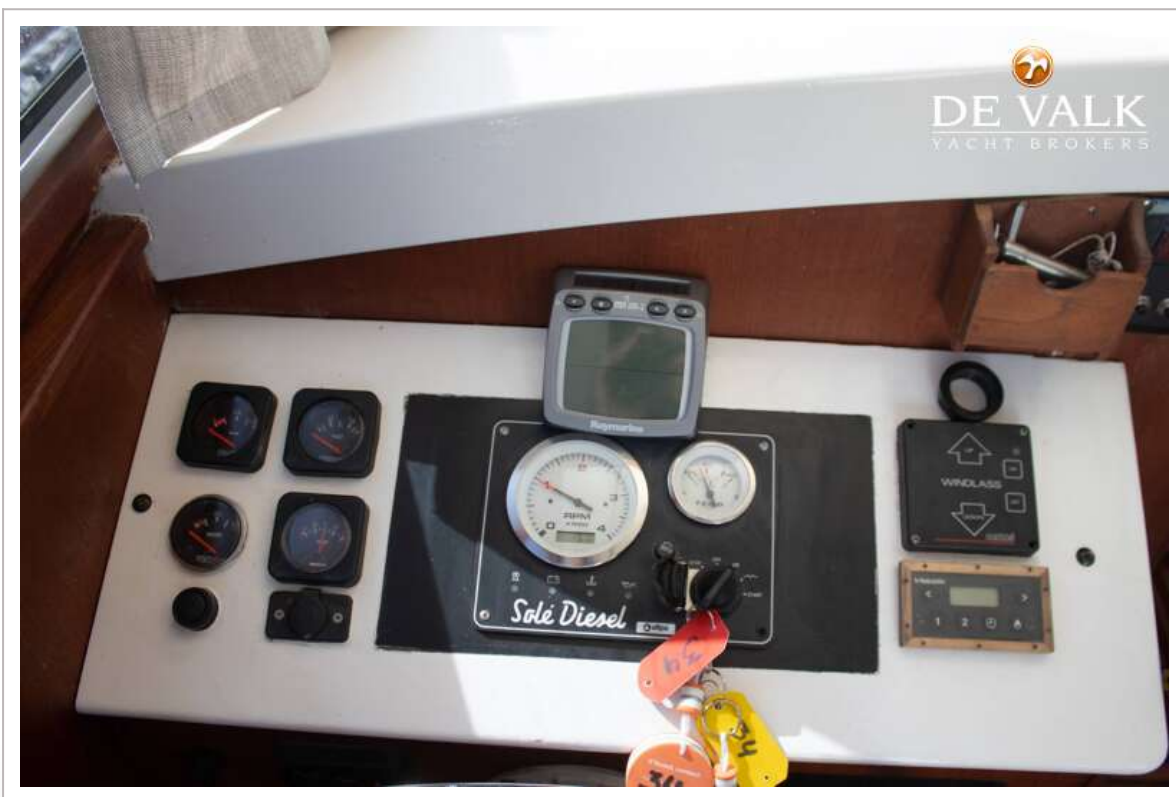


# BLOEMSMA ZEILKOTTER ALUMINIUM

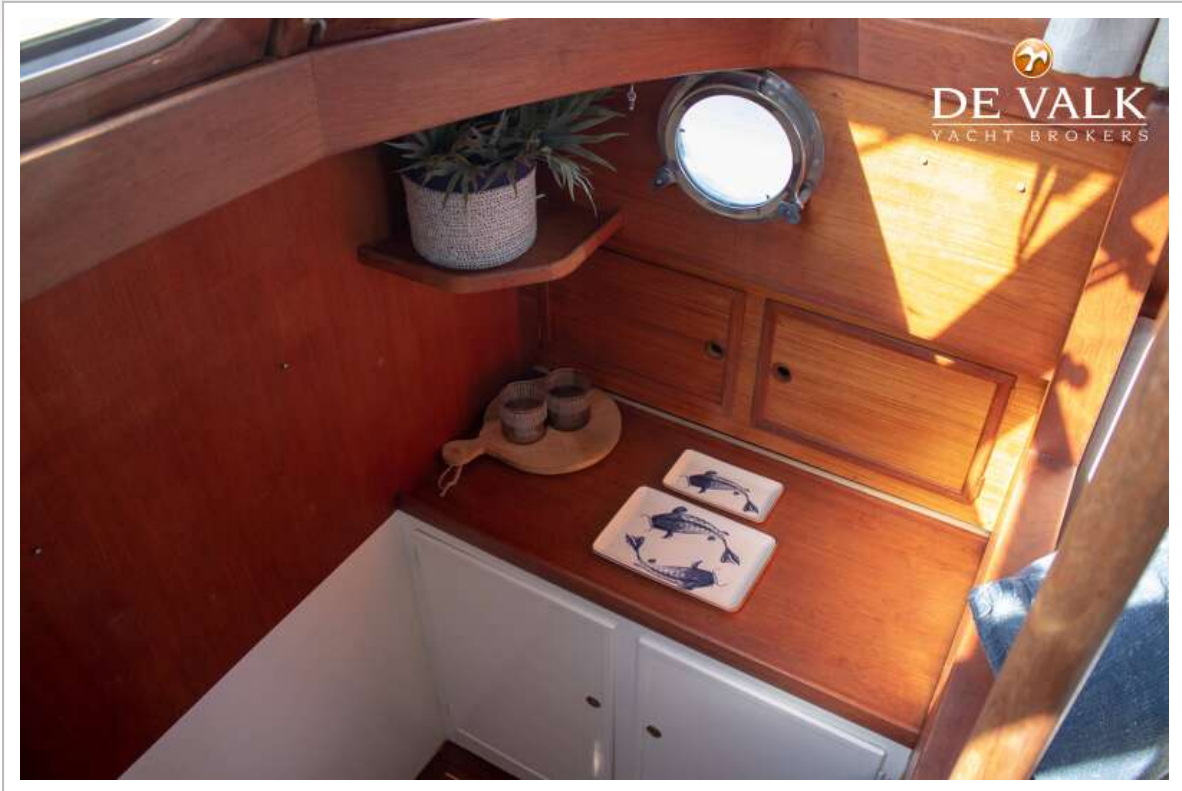




# BLOEMSMA ZEILKOTTER ALUMINIUM

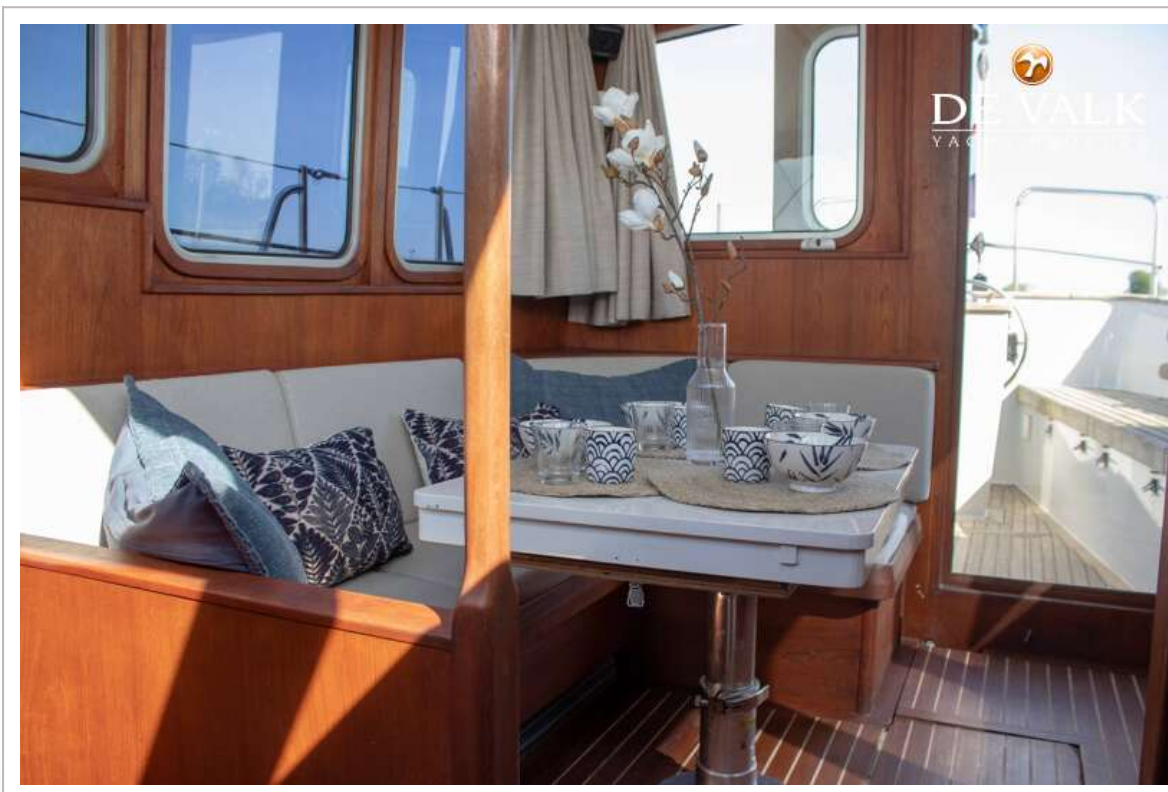


# BLOEMSMA ZEILKOTTER ALUMINIUM

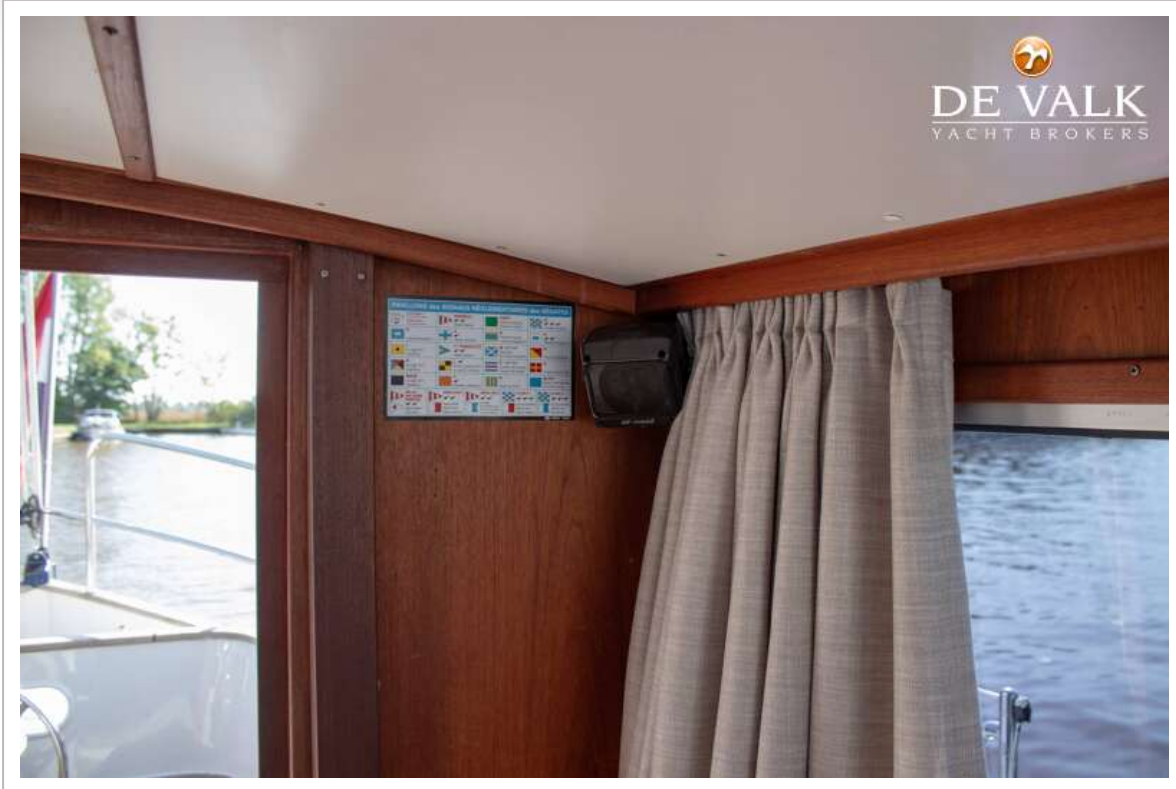




# BLOEMSMA ZEILKOTTER ALUMINIUM

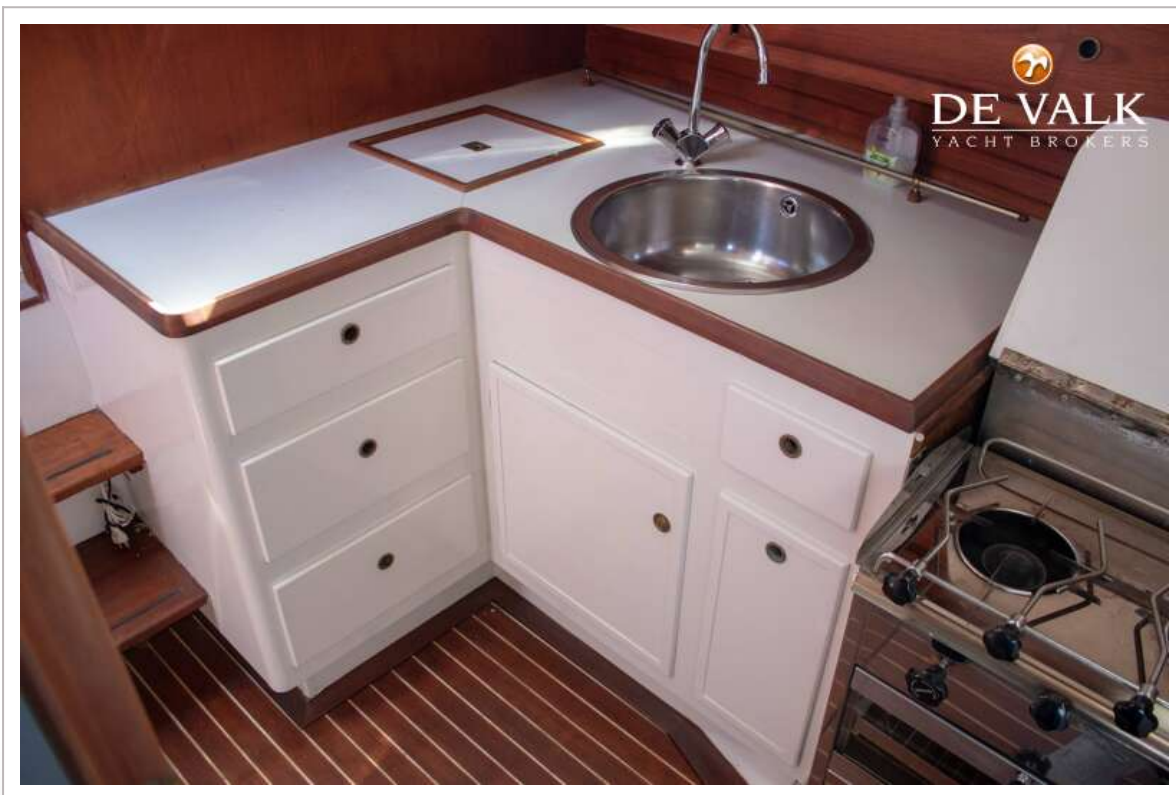
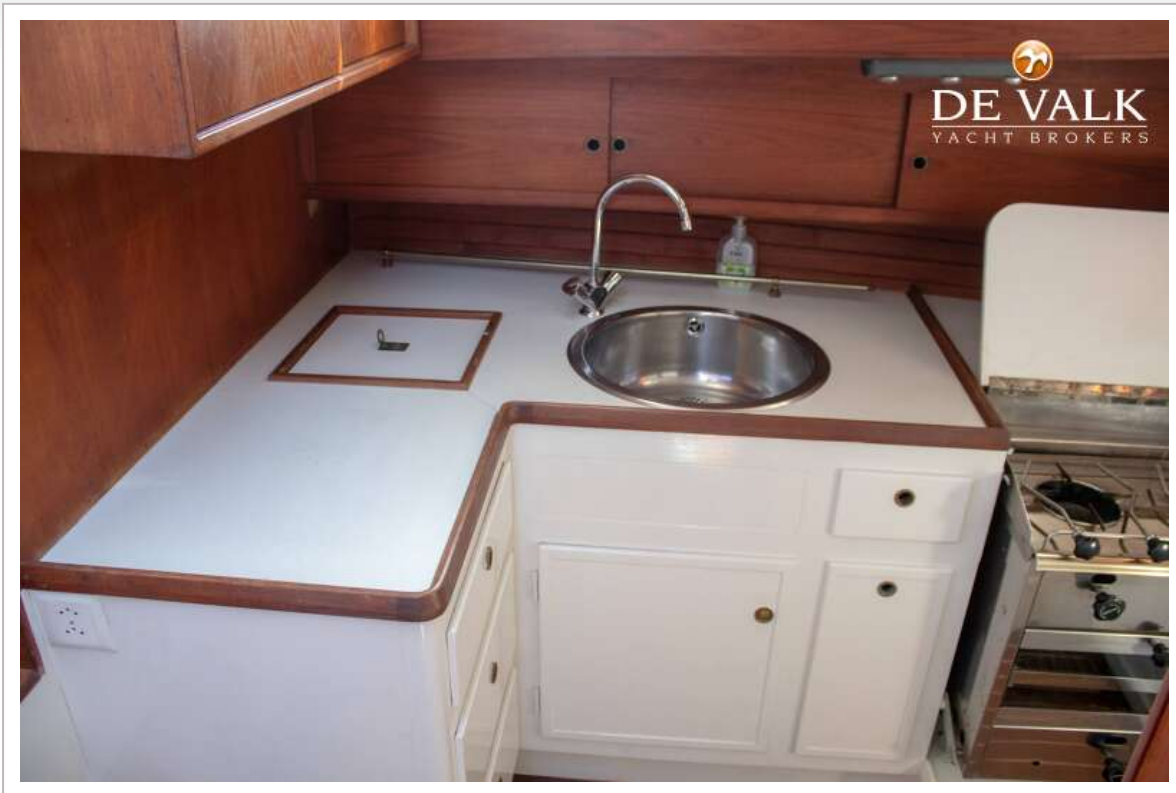


# BLOEMSMA ZEILKOTTER ALUMINIUM

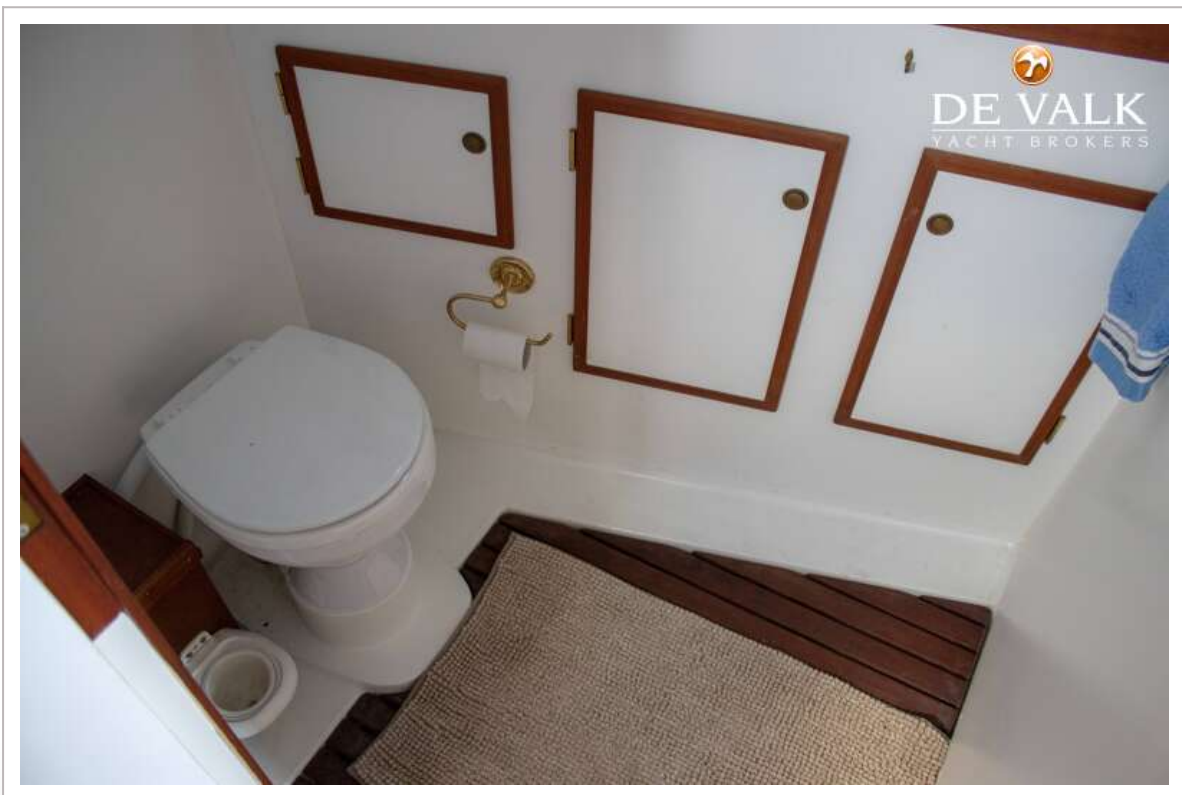
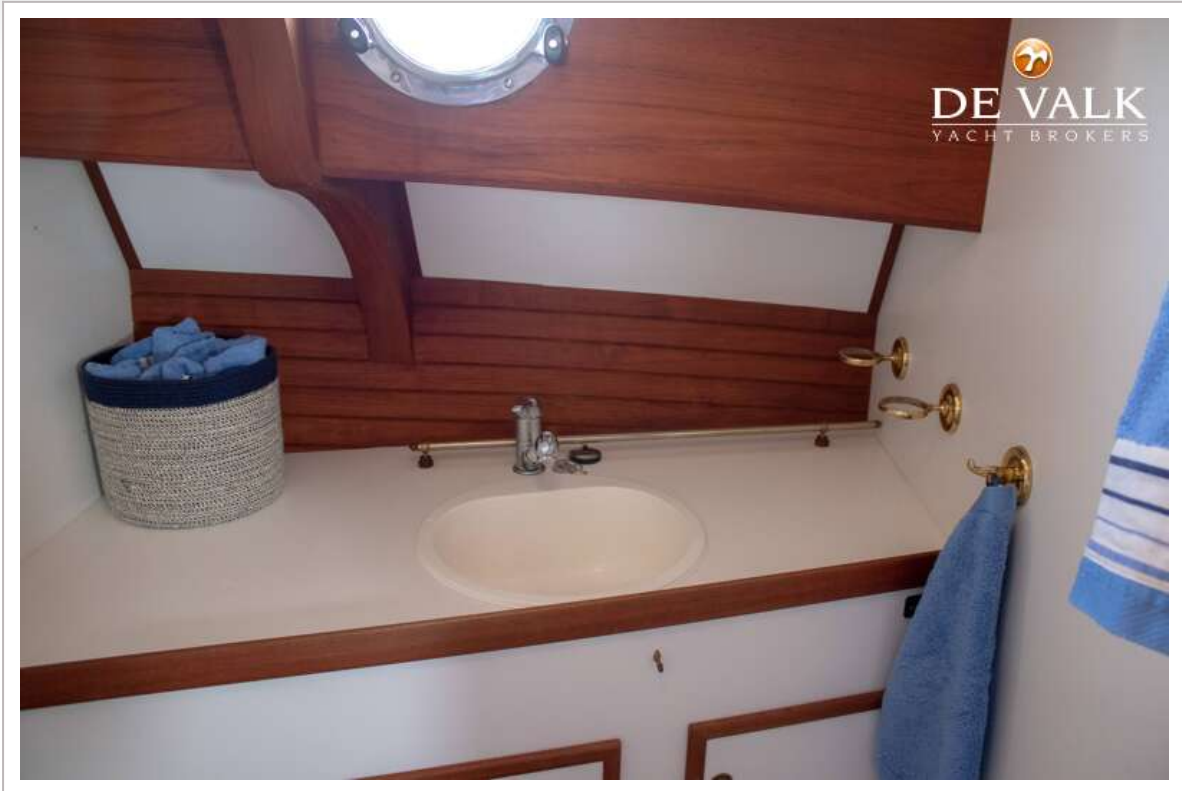




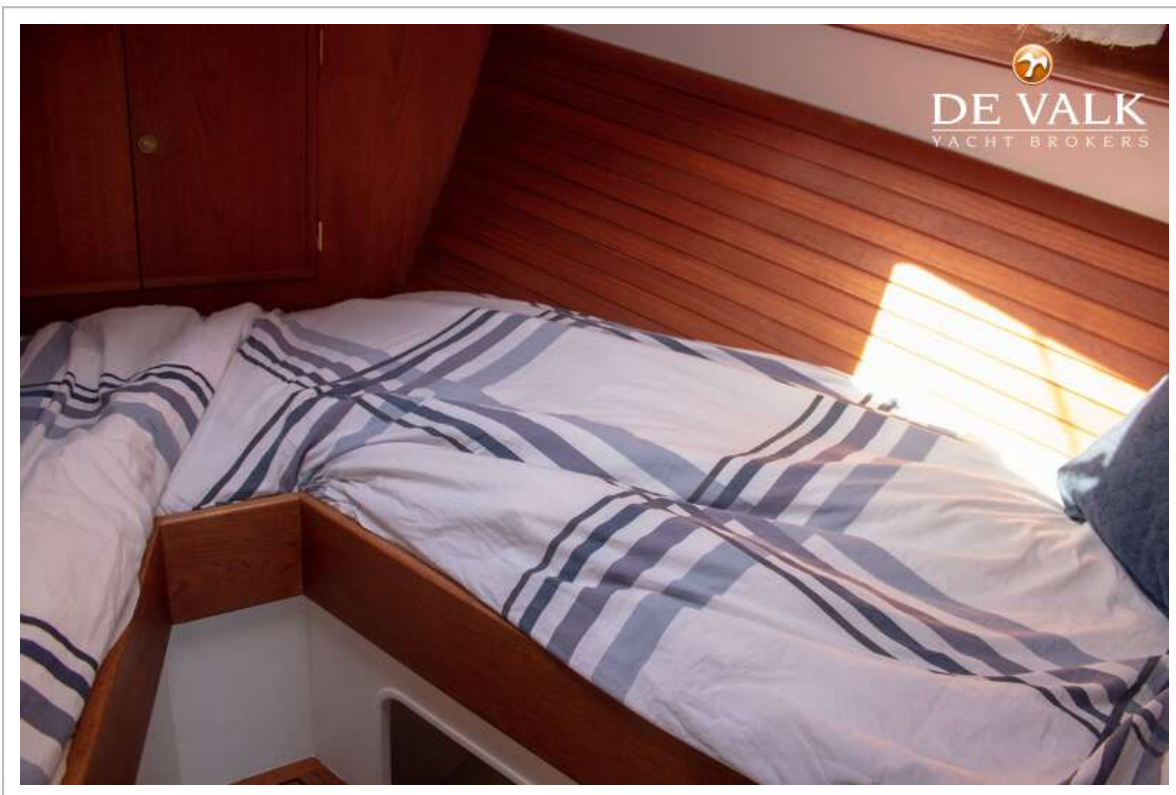
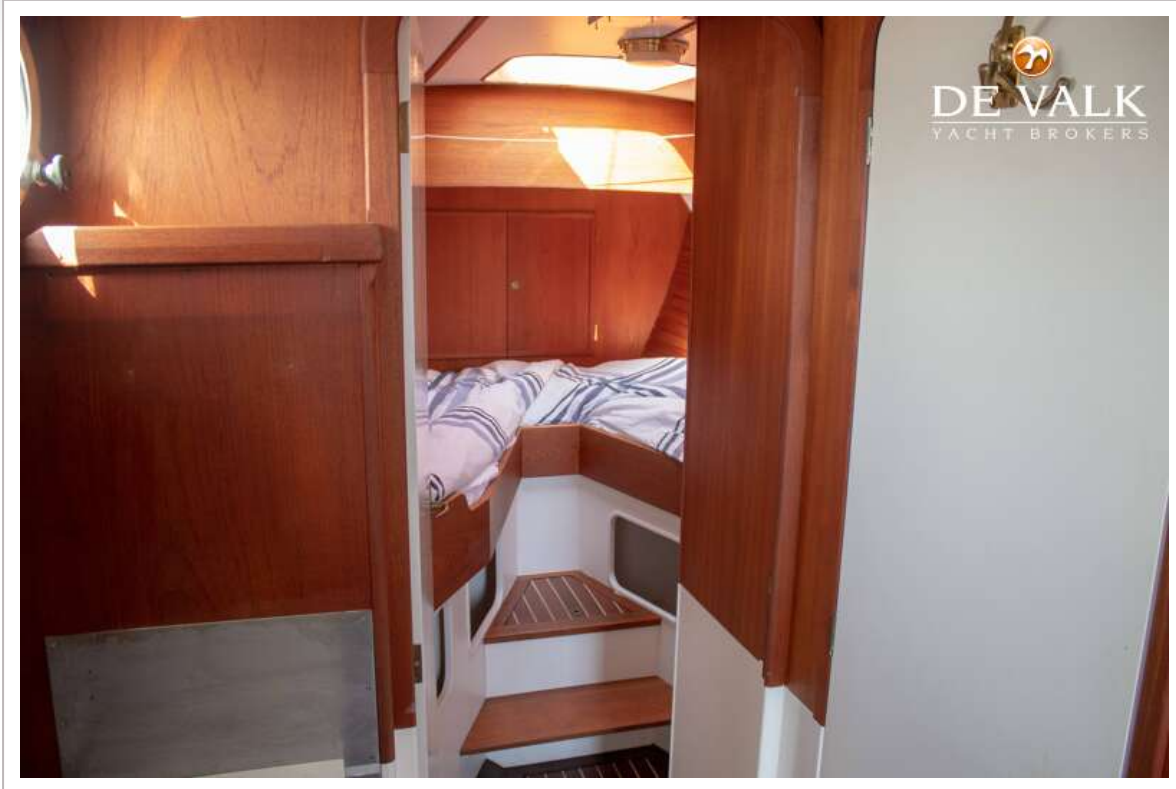
# BLOEMSMA ZEILKOTTER ALUMINIUM



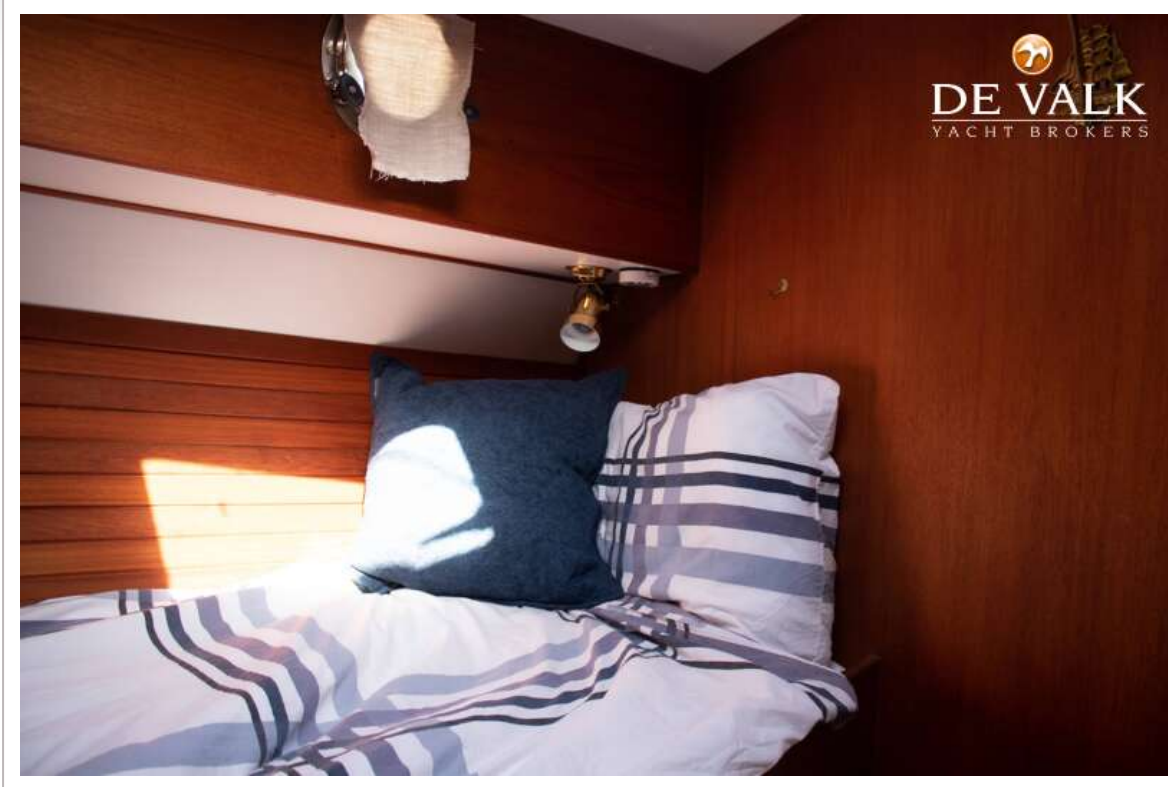




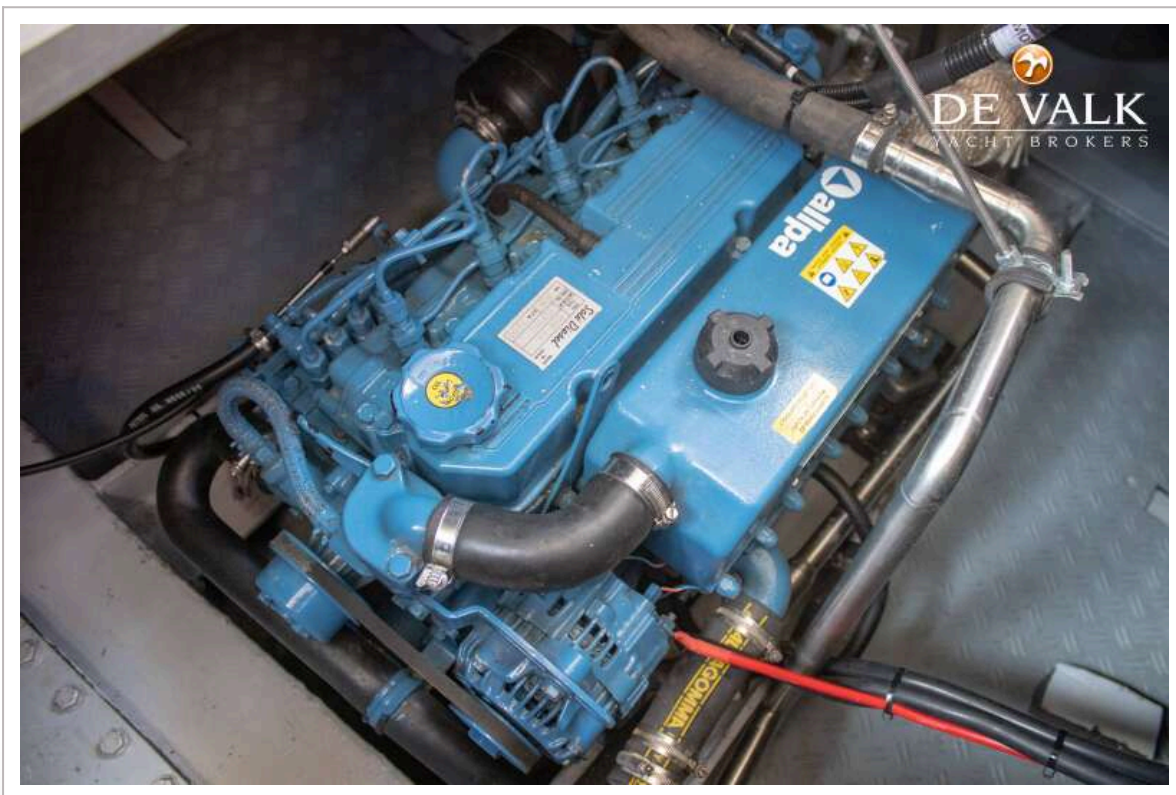
# BLOEMSMA ZEILKOTTER ALUMINIUM

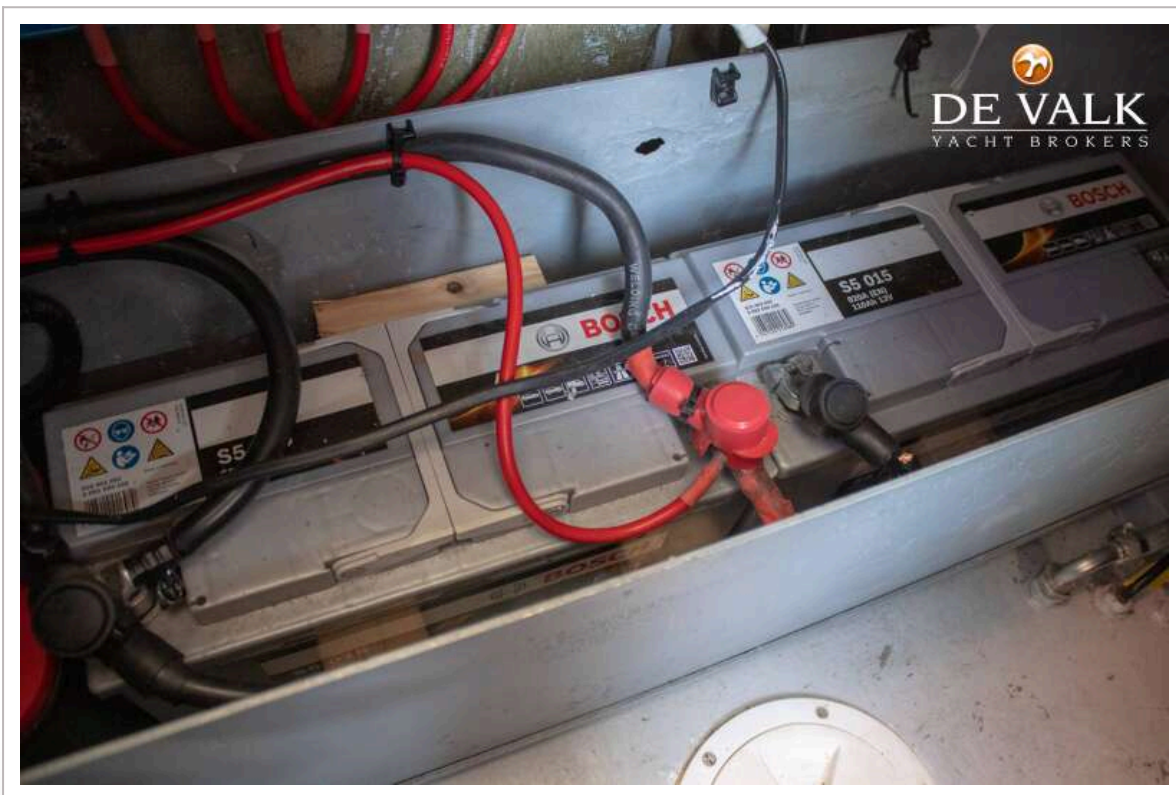
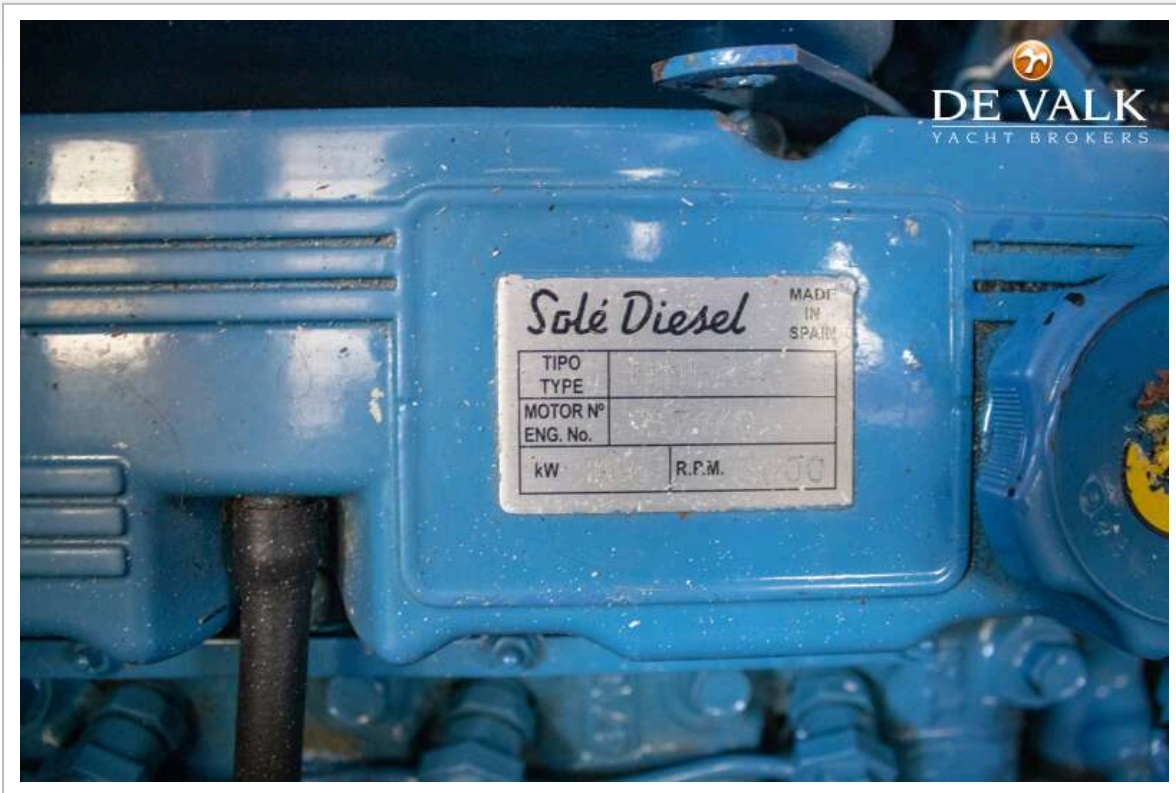


# BLOEMSMA ZEILKOTTER ALUMINIUM











# BLOEMSMA ZEILKOTTER ALUMINIUM



