



DE VALK
YACHT BROKERS



ATLANTIC 444



DE VALK
YACHT BROKERS

ATLANTIC 444

BROKER'S COMMENTS

Atlantic 444 "made in Holland" a great yacht, in a nice condition with two Volvo Penta 370 hp diesel engines. Let this 444 take you to the most beautiful locations in Europe. . . in view of the low clearance height, a trip through France is certainly a possibility. Are you looking for a 14 meter +, 2 cabins, polyester, fast motor yacht, then your first "stop" is De Valk Yachtbrokers Sneek. This Atlantic 444 is located in our covered sales port. . .we see you soon.

Pieter Bosma

SPECIFICATIONS

Dimensions	14.15 x 4.50 x 1.25 (m)	Builder	Holland Boat b.v.
Built	1999	Cabins	2
Material	GRP	Berths	4
Engine(s)	2 x Volvo Penta TAMD63P-A diesel	Hp/Kw	2 x 370.00 (hp), 272.32 (kw)
Asking price	sold (VAT)	Lying	at sales office

CONTACT

Sales office	De Valk Sneek	Telephone	+31 (0)515 42 80 30
Address	Zwolsmanweg 7 8606 KC Sneek NL	E-mail	sneek@devalk.nl

DISCLAIMER

These particulars are given in good faith as supplied but cannot be guaranteed.



GENERAL

Model	ATLANTIC 444
Type	motor yacht
LOA (m)	14,15
Beam (m)	4,50
Draft (m)	1,25
Headroom (m)	1,95
Year built	1999
Builder	Holland Boat b.v.
Country	The Netherlands
Designer	John Bennet
Displacement (t)	14,2
CE norm	B
Hull material	GRP
Hull colour	white
Hull shape	deep-V
Superstructure material	GRP
Rubbing strake	rubber
Deck material	GRP
Deck finish	teak
Superstructure deck finish	non-skid moulded in
Dorades	yes
Window frame	stainless steel
Window material	glass
Deckhatch	yes
Portholes	stainless steel
Radar arch	yes
Fuel tank (litre)	stainless steel 2x 900 ltr
Level indicator (fuel tank)	VDO
Freshwater tank (litre)	675 ltr
Blackwater tank (litre)	stainless steel 2x 150 ltr



Blackwater tank extraction	deck extraction + pump
Wheel steering	hydraulic
Outside helm position	yes

ACCOMMODATION

Cabins	2
Berths	4
Interior	cherry
Floor	teak and holly And carpet
Aft deck	yes
Saloon	yes
Headroom saloon (m)	1,95 m.
Heating	diesel ducted hot air Eberspacher D5LC
Heating 2	diesel ducted hot air Eberspacher D5LC
Chart table	yes
Aft Cabin	yes
Dinette	yes
Sliding door to aft deck	yes
Galley	yes
Countertop	corian
Sink	stainless steel
Cooker	ceramic 4 burner Siemens
Microwave	Bauknecht
Fridge	Dometic 131 ltr in galley + fridge in salon
Freezer	compartment in Fridge
Hot water system	220V + engine Boiler
Water pressure system	electrical
Owners cabin	French bed
Bed length (m)	2.00 m.
Wardrobe	hanging and drawers
Bathroom	en suite



Toilet	en suite
Toilet system	electric Mobiflasch
Wash basin	in the bathroom
Shower	en suite
Guest cabin 1	French bed
Bed length (m)	2.00 m.
Wardrobe	hanging and drawers
Bathroom	en suite
Toilet	en suite
Toilet system	electric
Wash basin	in the bathroom
Shower	en suite
Washing machine/dryer combi	Siemens Topline

MACHINERY

No of engines	2
Make	Volvo Penta
Type	TAMD63P-A
HP	370
kW	272.32
Fuel	diesel
Maximum speed (kn)	25
Cruising speed (kn)	21
Engine cooling system	freshwater heat exchanger
Drive	shaft
Shaft seal	yes
Engine controls	bowden cable
Gearbox	hydraulic ZF LRM120A
Bowthruster	electric
Sternthruster	electric
Exhaust	watercooled



Propeller type	fixed 23 x 29"
Propeller blades	4
Propeller shaft material	stainless steel 55 mm
Shaft lubrication	water
Manual bilge pump	yes
Electric bilge pump	yes
Electrical installation	24/220V
Generator	Mastervolt Wisper 6000
Running hours generator	237 h.
Batteries	yes
Start battery	yes
Service battery	yes
Battery charger	Victron Skylla 24/75 + 24/100
Inverter	Victron Atlas 24/2500
Shorepower	with cable
Trimtabs	yes
Extra info	exhaust alarm

NAVIGATION

Electric compass	yes
Multi control display	Raytheon ST60
Depth sounder	Raytheon ST60
Log	Raytheon ST60
VHF	Shipmate RS8300
Autopilot	Autohelm ST7000+
Rudder angle indicator	Raytheon ST60
Radar	Raytheon R41XX
Plotter/GPS	Raymarine
Navigation lights	yes
Searchlight	electric controlled
Extra info	RR multi antenna



EQUIPMENT

Fixed windscreen	yes
Sprayhood	yes
Cockpit cover	yes
Cockpit cushions	yes
Cockpit table	yes
Bathing platform	easy acces stair
Boarding ladder	yes
Deck shower	yes
Anchor	CQR Plough Stainless Steel
Anchor chain	yes
Windlass	electrical Simson Lawrence
Deck wash	yes
Davits	stainless steel
Davits controls	manual
Sea railing	stainless steel
Grab rail (superstructure)	stainless steel
Railing side opening gates	yes
Wiper	3x
Horn	yes
Fenders	yes
Mooring lines	yes
TV	in salon and aftcabin
Satellite	Megasat
Radio-cd player	in salon and aftcabin
Cockpit speakers	yes
Speakers in salon	yes
Extinguisher in engine room	yes
Extra info	Fender corbs
Extra info	dinghy base on bathingplatform



ATLANTIC 444



ATLANTIC 444



ATLANTIC 444



ATLANTIC 444



ATLANTIC 444



ATLANTIC 444



ATLANTIC 444



ATLANTIC 444



ATLANTIC 444



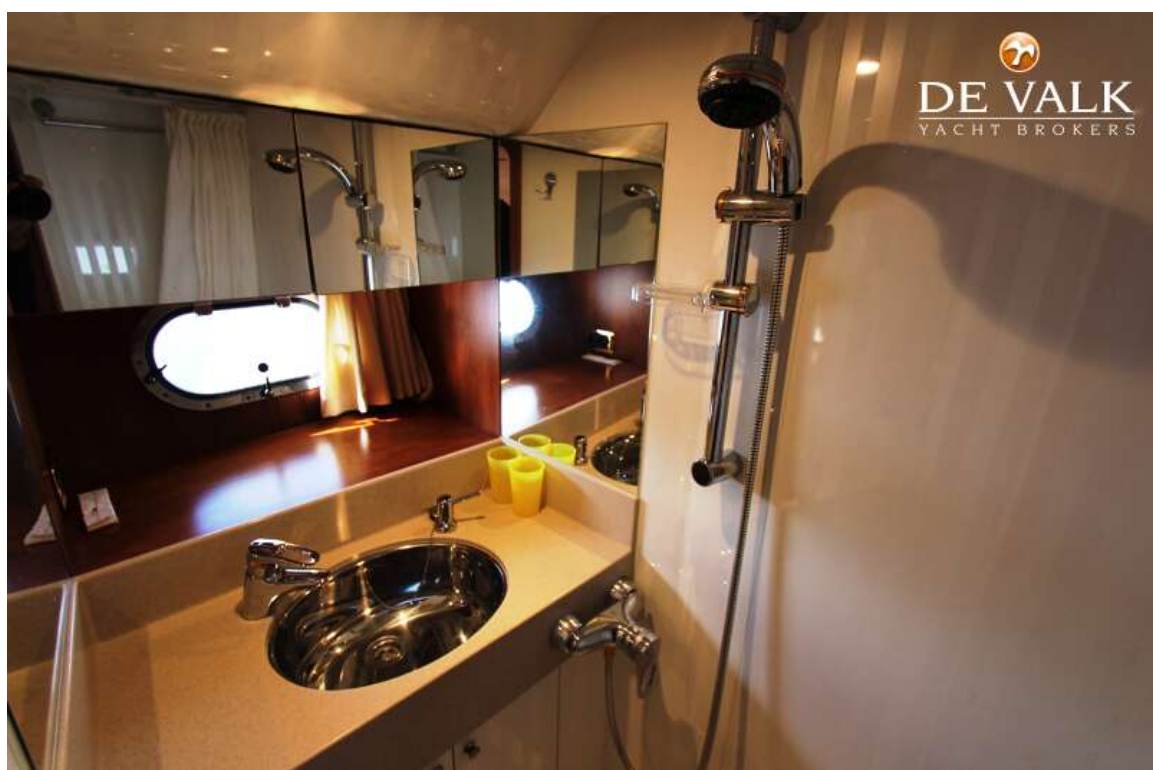
ATLANTIC 444



ATLANTIC 444



ATLANTIC 444



ATLANTIC 444



ATLANTIC 444

