



## KOOPMANS 36

## BROKER'S COMMENTS

A rare opportunity to own a true classic: the Koopmans 36. A stunning example of Dutch craftsmanship, this Koopmans 36 is an aluminium sailing yacht with a retractable keel, offering both performance and versatility. Renowned builder Koopmans Kasko's built this exceptional vessel for himself, taking the time to perfect every detail and nuance. Very well maintained and in excellent condition, she is truly ready to sail - a unique opportunity for discerning sailors. Now available for viewing and inspection in our sales harbor in Hindeloopen, 7 days a week.

*Hans Visser*

## SPECIFICATIONS

<b>Dimensions</b>	10.82 x 3.45 x 2,00 / 1.05 (m)	<b>Builder</b>	Harry Koopmans
<b>Built</b>	1999	<b>Cabins</b>	2
<b>Material</b>	Aluminium	<b>Berths</b>	6
<b>Engine(s)</b>	1 x Volvo MD 2030C 868819 diesel	<b>Hp/Kw</b>	28.00 (hp), 20.30 (kw)
<b>Asking price</b>	sold (VAT )	<b>Lying</b>	at sales office

## CONTACT

<b>Sales office</b>	De Valk Hindeloopen B.V.	<b>Telephone</b>	+31 514 52 40 00
<b>Address</b>	Oosterstrand 1 8713 JS Hindeloopen NL	<b>E-mail</b>	hindeloopen@devalk.nl

## DISCLAIMER

These particulars are given in good faith as supplied but cannot be guaranteed.



## GENERAL

Model	KOOPMANS 36
Type	sailing yacht
LOA (m)	10,82
Beam (m)	3,45
Draft (m)	1,05
Draft min (m)	2,00
Air draft (m)	16,85
Headroom (m)	1,85
Year built	1999
Launched	2000
Builder	Harry Koopmans
Country	The Netherlands
Designer	Koopmans
Displacement (t)	8,3
Ballast (tonnes)	3,5 tonnes
Hull material	aluminium
Hull colour	blue
Hull shape	round-bilged
Keel type	centreboard
Superstructure material	aluminium
Rubbing strake	aluminum
Deck material	aluminium
Deck finish	non-skid paint
Superstructure deck finish	paint
Cockpit deck finish	teak
Antifouling (year)	2023
Dorades	2
Window frame	aluminium
Window material	tempered glass
Deckhatch	yes



Portholes	aluminium 3
Insulation	foam
Fuel tank (litre)	aluminium   125 ltr.
Level indicator (fuel tank)	Dipstick
Fuel daytank (litre)	aluminium   50 ltr.
Level indicator (daytank)	Inspection glass
Freshwater tank (litre)	aluminium   135 ltr.   new coating 2019   should be inspected
Blackwater tank (litre)	aluminium   40 ltr.
Blackwater tank extraction	deck extraction + uw line
Wheel steering	rack & pinion
More info on hull	There is some light corrosion near the helm station, and the painted deck should be inspected.
More info on paintwork	2019 dek painted

## ACCOMMODATION

Cabins	2
Berths	6
Interior	Mahogany veneer, giving it a warm and classic look.
Floor	wood
Open cockpit	yes
Headroom saloon (m)	1,90 mtr.
Heating	stove diesel
Navigation center	yes
Chart table	yes
Galley	yes
Countertop	Duropal
Sink	stainless steel
Cooker	calor gas   2 burner   Gas system needs inspection.
Oven	yes
Gas alarm	yes
Fridge	2023 Isotherm



Water pressure system	electrical
Manual and/or foot pump	yes
Crockery	yes
Owners cabin	v-bed Front
Bed length (m)	2.00
Wardrobe	hanging and shelves
Bathroom	shared
Toilet	shared
Toilet system	manual Jabsco, 2025 pump
Wash basin	at the toilet
Extra info	2023 Jabsco water pump
Guest cabin 1	double bed Rear
Bed length (m)	2.0
Wardrobe	hanging and shelves

## MACHINERY

No of engines	1
Make	Volvo MD 2030C
Type	868819
HP	28
kW	20.30
Fuel	diesel
Maximum speed (kn)	7
Cruising speed (kn)	6
Consumption (l/hr)	2
Engine hours	2180
Engine cooling system	freshwater heat exchanger
Drive	shaft
Saildrive seal	2023 Volvo seal
Engine controls	bowden cable
Gearbox	mechanical



<b>Exhaust</b>	watercooled
<b>Propeller type</b>	fixed
<b>Propeller blades</b>	3
<b>Propeller shaft material</b>	stainless steel
<b>Shaft lubrication</b>	water
<b>Manual bilge pump</b>	2023 Whale Gusher
<b>Electric bilge pump</b>	2023 2x Whale 1300
<b>Batteries</b>	yes
<b>Start battery</b>	New 2022   1x 95Ah
<b>Service battery</b>	New 2023   1x 230Ah LiPoFo
<b>Battery monitor</b>	2023 Victron Smart Shunt
<b>Battery charger</b>	2023 Victron-orion TR smart 12-12-18
<b>Battery charger/inverter</b>	2023 Victron Multiplus 12/500/20
<b>Solar panel</b>	2x 52watt
<b>Shorepower</b>	with cable
<b>Extra info</b>	New 2022   Engine cooling pipes
<b>Extra info</b>	Wiring navigation center new 2023

## NAVIGATION

<b>Compass</b>	Plastimo
<b>Depth sounder/log</b>	Raymarine I 70
<b>Repeater</b>	Raymarine I 70
<b>VHF</b>	2019 Icom IC-M323G+ 2023Cockpit repeater
<b>VHF handheld</b>	Icom IC-193D
<b>Plotter/GPS</b>	Furuno GP-38
<b>Personal computer</b>	2025 Rasberry PI-5 with 7"screen
<b>AIS receiver</b>	2019 Digital Yacht AIT-5000
<b>AIS transponder</b>	2019 Digital Yacht AIT-5000, class B+
<b>Navigation lights</b>	2021 All led
<b>Searchlight</b>	yes



## EQUIPMENT

Fixed windscreen	yes
Sprayhood with grab rail	yes
Cockpit cover	yes
Dodger	Restitched in 2025
Sun awning	yes
Cockpit table	yes
Boarding ladder	stainless steel
Anchor	Bruce 20 Kg
Anchor chain	40m 8mm
Windlass	manual Muir VM500
Sea railing	wire
Grab rail (superstructure)	aluminium
Pushpit	yes
Pulpit	yes
Life raft	valise (or bag)   New 2023
Life raft (pers)	valise (or bag) 4
Safety lines on deck	yes
Radar reflector	yes
Fenders	yes
Mooring lines	yes
Spare parts	yes
Radio-cd player	Pioneer
Speakers in salon	yes
Clock - barometer	yes
Fire extinguisher	Needs to be serviced

## RIGGING

Rigging	sloop
Standing rigging	wire 2016
Brand mast	Seldén 2016



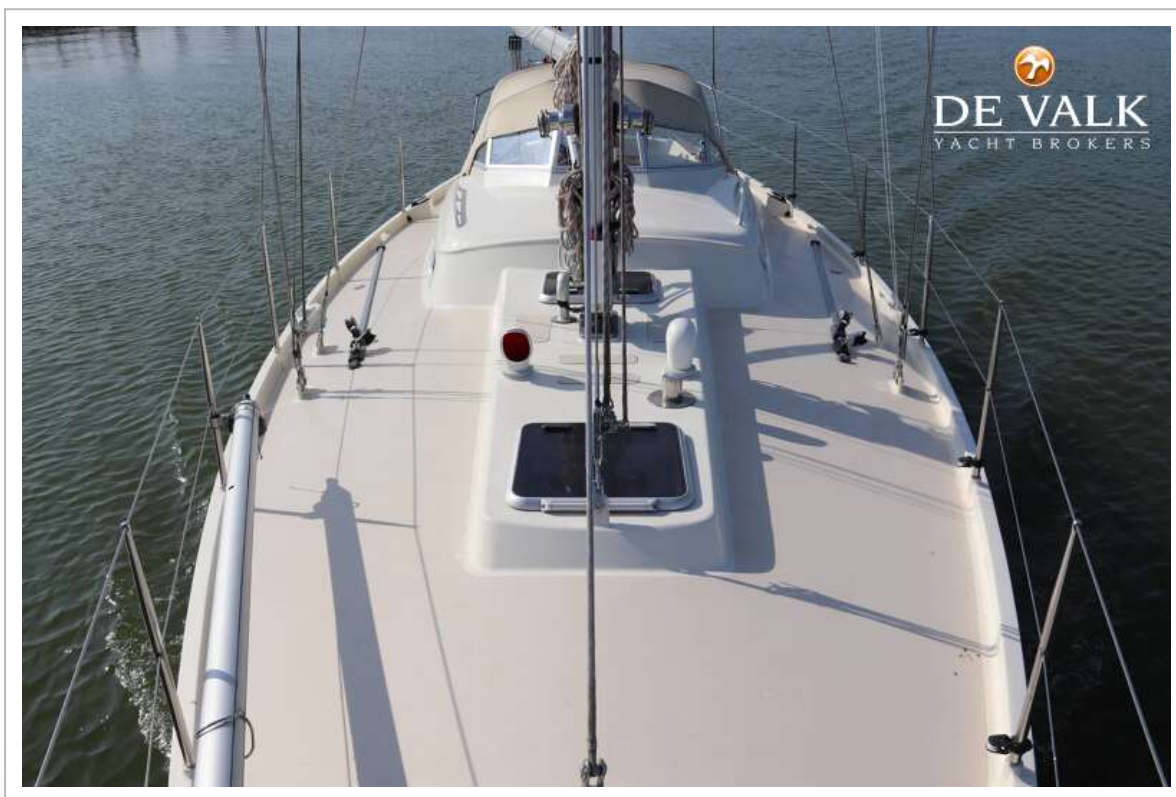
<b>Material mast</b>	aluminium
<b>Spreaders</b>	2 pair
<b>Mainsail</b>	2016 27m2
<b>Mainsail cover</b>	yes
<b>Battcars</b>	yes
<b>Fully battened mainsail</b>	yes
<b>Cutterstay</b>	2022
<b>Jib</b>	2022 16m2
<b>Genoa I</b>	2016 38m2
<b>Genoa furler</b>	yes
<b>Removable innerforestay</b>	yes
<b>Reefing System</b>	quick-one-line-reefing
<b>Boomvang</b>	mechanical Selden
<b>Secondary sheet winch</b>	2x Lewmar ST16
<b>Genoa sheetwinches</b>	2x Lewmar ST40
<b>Halyard winches</b>	2x Anderson ST28
<b>Reefing winch</b>	1x Anderson ST18
<b>Spi-pole</b>	aluminium







# KOOPMANS 36













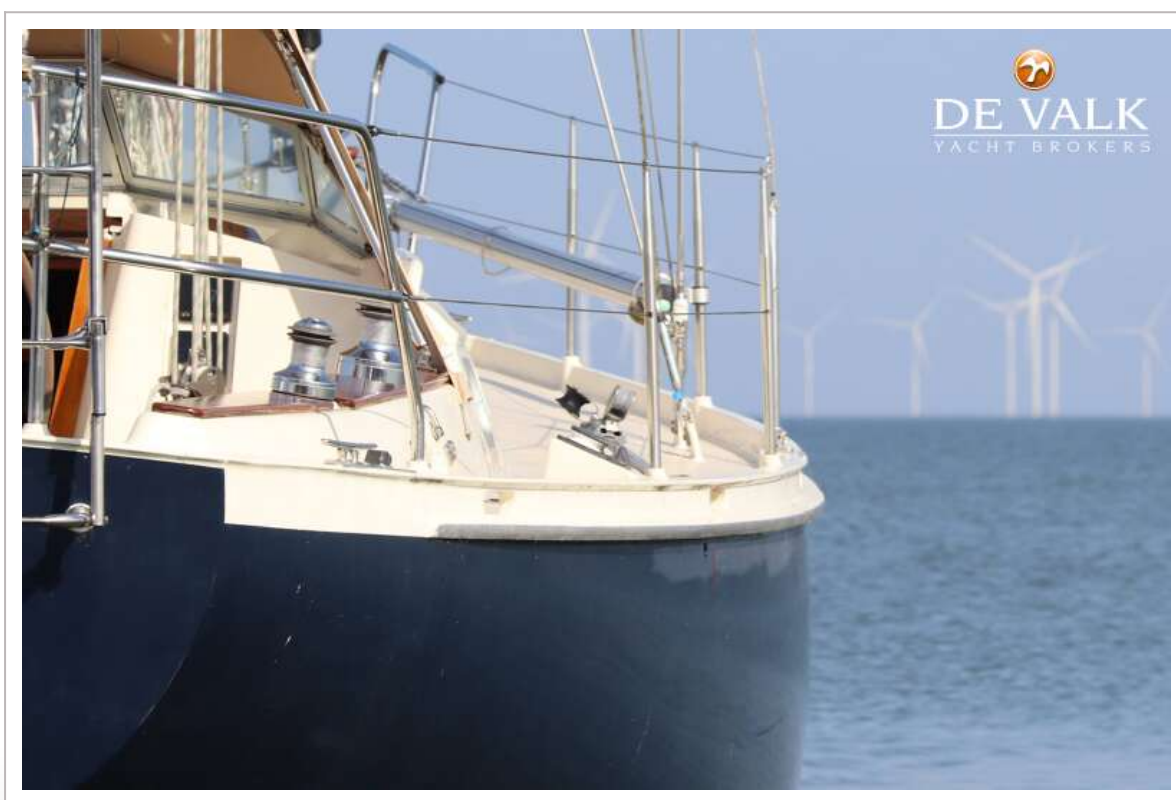




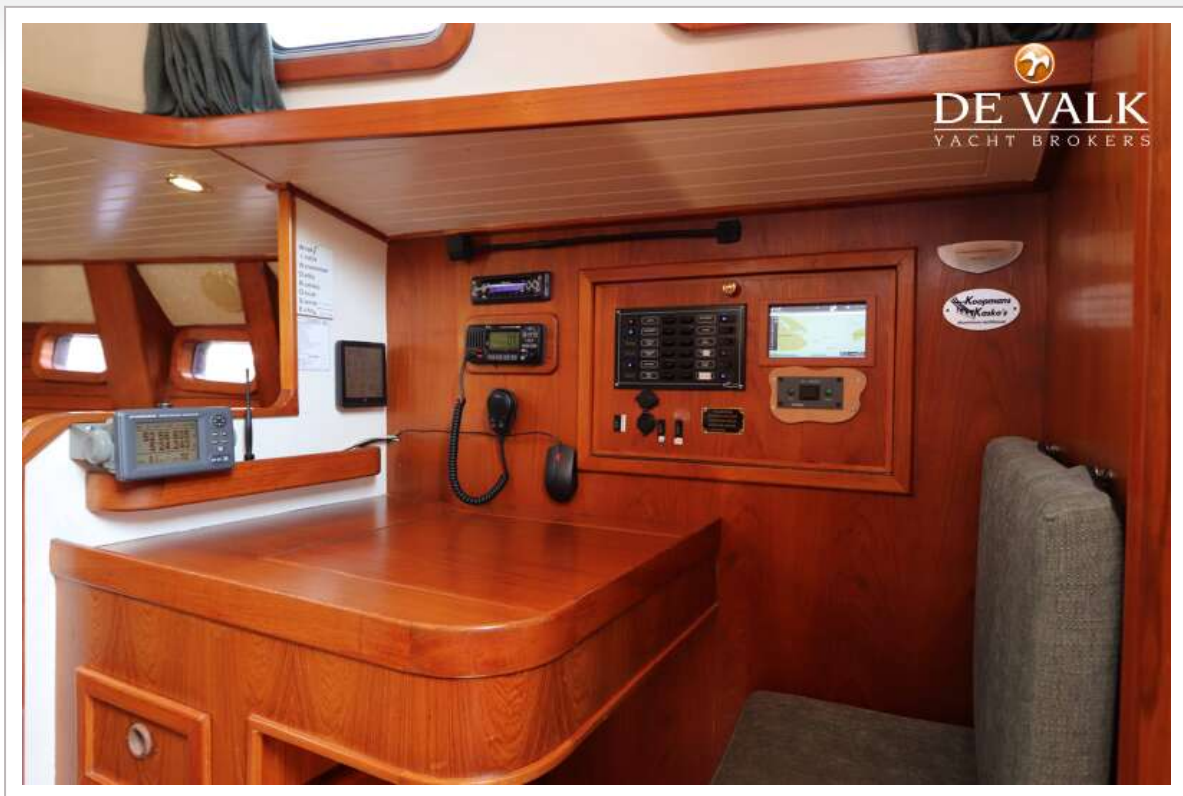




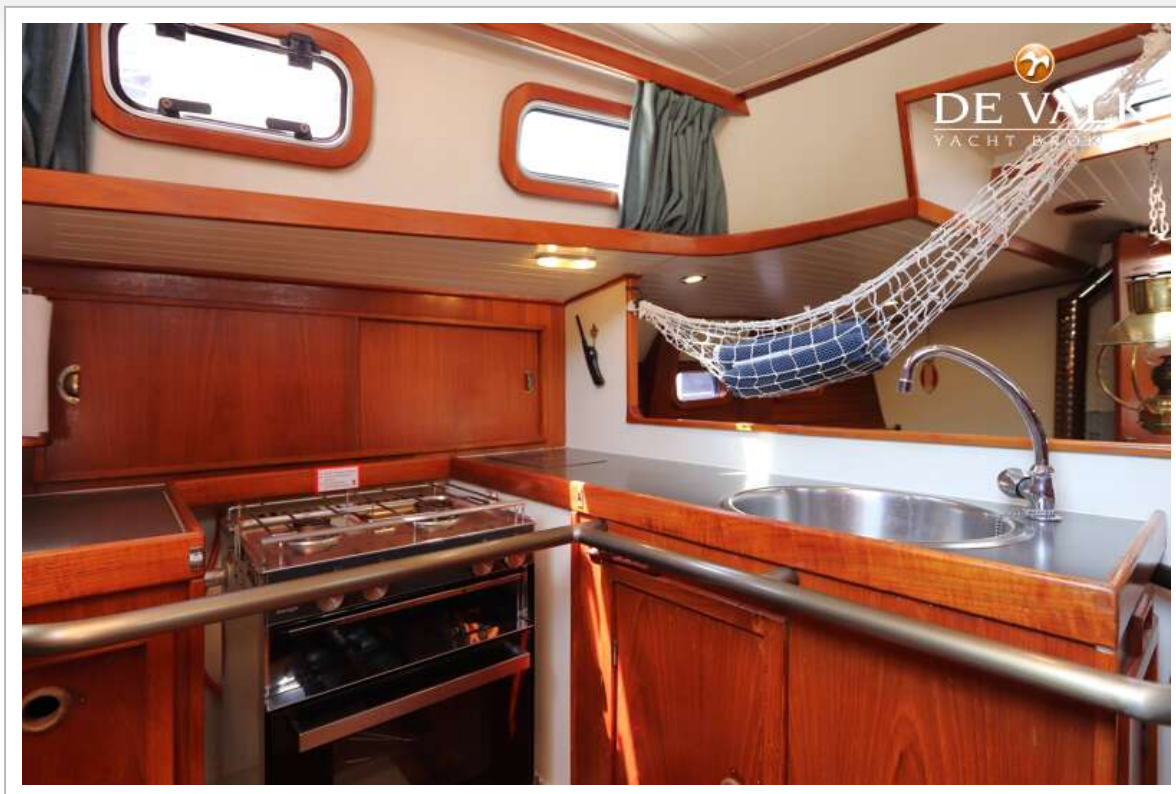


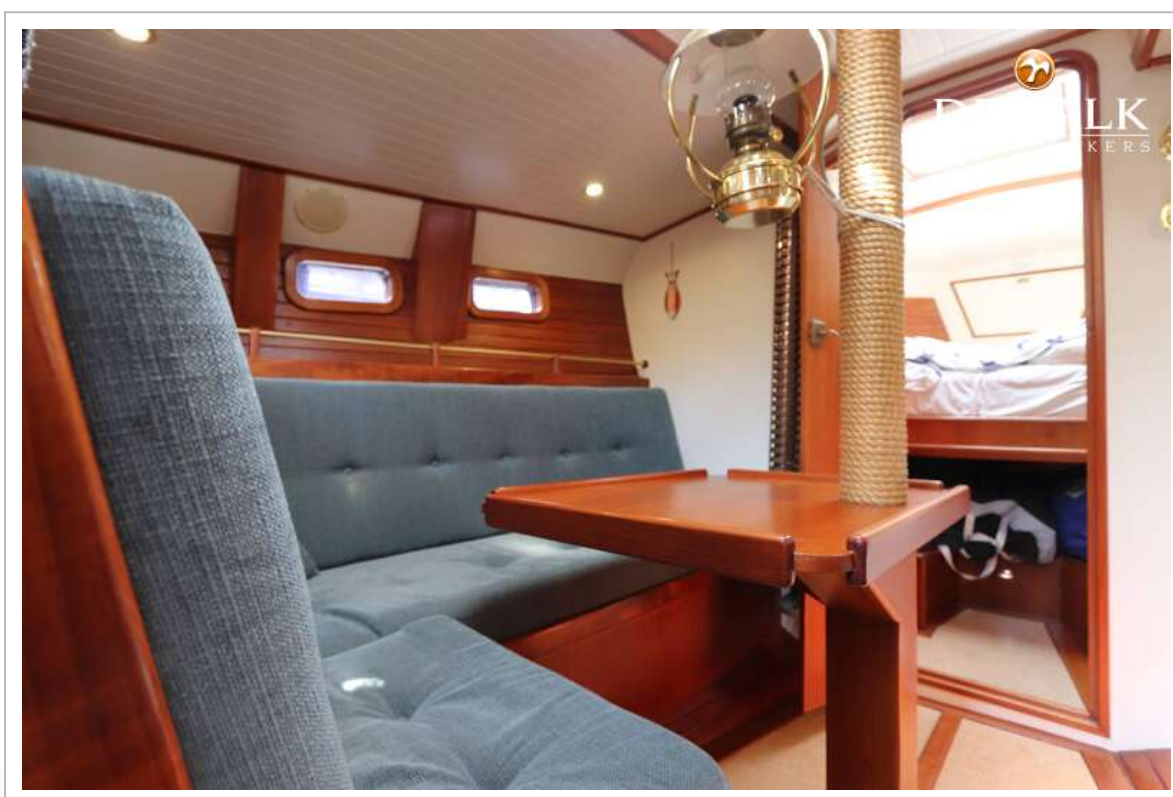
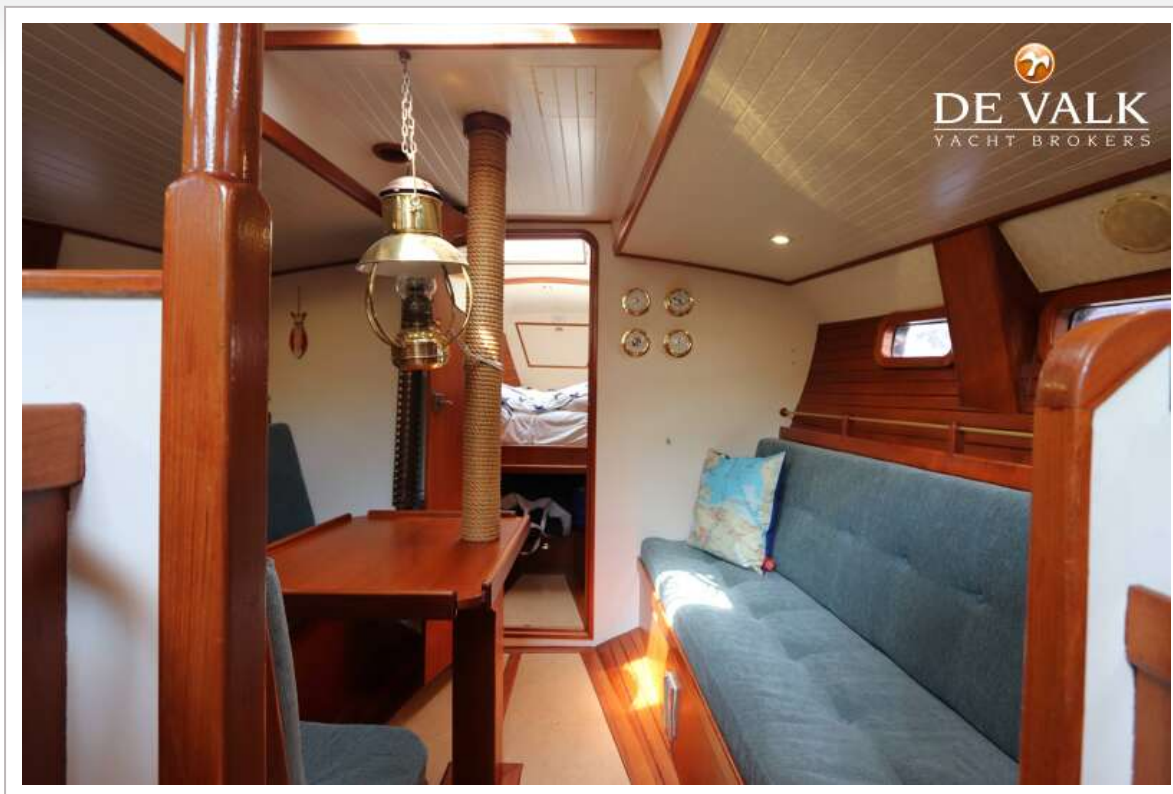






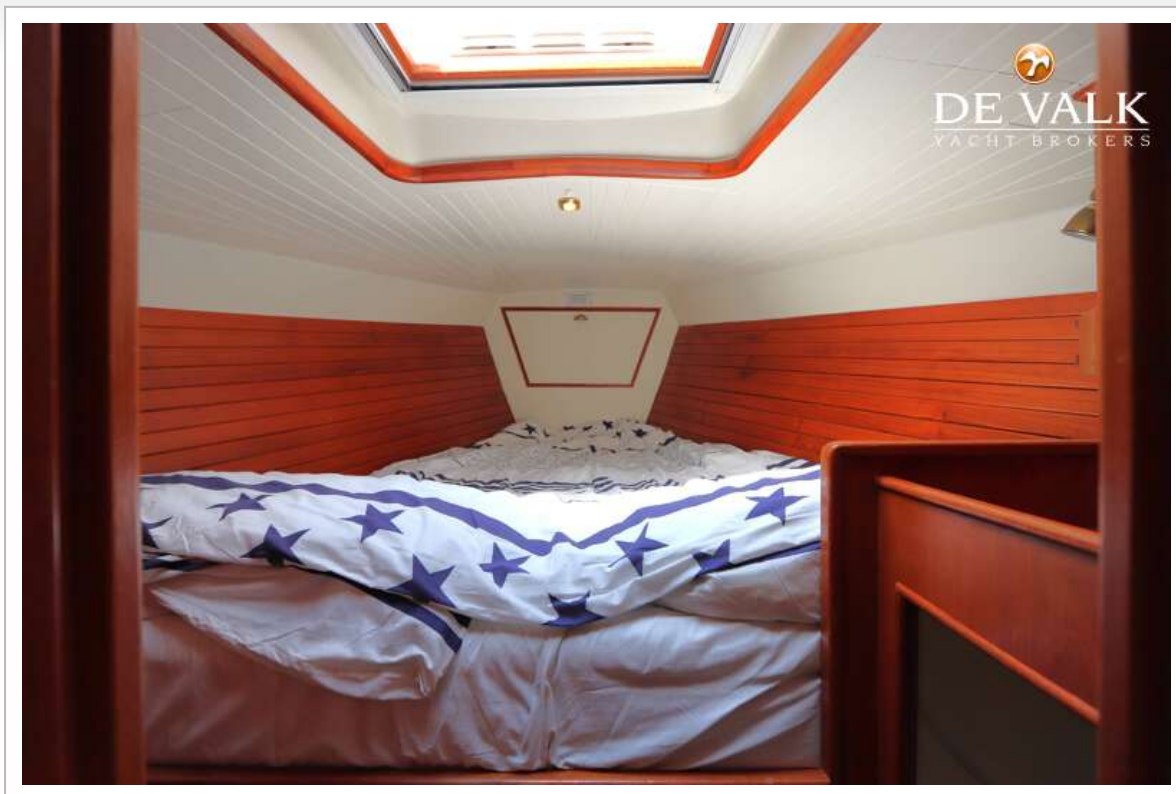














# KOOPMANS 36

