



DE VALK
YACHT BROKERS



HALLBERG RASSY 48 MKI



DE VALK
YACHT BROKERS

HALLBERG RASSY 48 MKI

BROKER'S COMMENTS

All the bells and whistles, Water maker, Generator, Air-conditioning, Electric winches, Hydraulic mainsail operation, are just a few of the many options that this perfectly maintained Hallberg Rassy 48 has. Ship is ready for her new owner who wants to embark on a new adventure in all the comfort and luxury you can wish for. This Hallberg Rassy 48 "Synergy" is now ready to be viewed and admired 7 days a week in our sales marina in Hindeloopen.

Johan Nooitgedagt

SPECIFICATIONS

Dimensions	14.99 x 4.50 x 2.00 (m)	Builder	Hallberg-Rassy Varvs AB
Built	2005	Cabins	3
Material	GRP	Berths	8
Engine(s)	1 x Volvo penta D3-110 diesel	Hp/Kw	110.00 (hp), 80.85 (kw)
Asking price	sold (VAT)	Lying	at sales office

CONTACT

Sales office	De Valk Hindeloopen B.V.	Telephone	+31 514 52 40 00
Address	Oosterstrand 1 8713 JS Hindeloopen NL	E-mail	hindeloopen@devalk.nl

DISCLAIMER

These particulars are given in good faith as supplied but cannot be guaranteed.



HALLBERG RASSY 48 MKI

GENERAL

Model	HALLBERG RASSY 48 MKI
Type	sailing yacht
LOA (m)	14,99
LWL (m)	13,25
Beam (m)	4,50
Draft (m)	2,00
Air draft (m)	22,00
Headroom (m)	2,00
Year built	2005
Builder	Hallberg-Rassy Varvs AB
Country	Sweden
Designer	German Frers
Displacement (t)	18,5
Ballast (tonnes)	lead in GRP 7,75
CE norm	A
Hull material	GRP
Hull colour	white
Hull shape	round-bilged
Keel type	fin keel with bulb
Superstructure material	GRP
Rubbing strake	Intergrated rubbing strake with brass strip.
Deck material	GRP
Deck finish	teak - vacuum glued
Superstructure deck finish	teak - vacuum glued
Cockpit deck finish	teak - vacuum glued
Dorades	7x
Window frame	aluminium
Window material	tempered glass
Deckhatch	5x Lewmar
Portholes	13 aluminium port holes, 12 of these are opening.



HALLBERG RASSY 48 MKI

Insulation	- with Divinycell PVC-foam
Fuel tank (litre)	Approx. 800 ltr. in two stainless steel tanks
Level indicator (fuel tank)	yes
Freshwater tank (litre)	stainless steel - Approx. 910 ltr.
Level indicator (freshwater)	yes
Blackwater tank (litre)	stainless steel 2x 77 ltr.
Blackwater tank extraction	deck extraction + uw line
Wheel steering	Cardan linked rod steering
Emergency tiller	yes

ACCOMMODATION

Cabins	3
Berths	8
Interior	teak
Floor	teak and holly With carpet on top
Saloon	yes
Headroom saloon (m)	2 mtr.
Heating	diesel ducted hot air - two Webasto Airtop 3500
Air-conditioning	
Navigation center	yes
Chart table	yes
Aft Cabin	Owners cabin
Galley	yes
Countertop	Duropol
Sink	stainless steel - double
Cooker	ceramic - force10
Oven	In cooker
Microwave	Electrolux Compact 600W
Fridge	In galley
Freezer	Isotherm, water cooled
Hot water system	220V + engine - 55 ltr.



HALLBERG RASSY 48 MKI

Water pressure system	electrical
Manual and/or foot pump	yes
Dishwasher	Electrolux ESF235
Owners cabin	double bed In aft cabin
Bed length (m)	2,03 mtr.
Wardrobe	hanging/drawers/shelves Yes
Bathroom	en suite Yes
Toilet	Jabsco
Toilet system	electric
Wash basin	
Shower	
Guest cabin 1	v-bed
Bed length (m)	2,03 mtr.
Wardrobe	hanging and shelves
Guest cabin 2	bunk bed
Bed length (m)	2,04 mtr.
Wardrobe	hanging and shelves
Bathroom	shared
Toilet	Jabsco
Toilet system	electric
Wash basin	
Shower	Yes
Bath tub	
Washing machine	Candy

MACHINERY

No of engines	1
Make	Volvo penta
Type	D3-110
HP	110
kW	80,85



HALLBERG RASSY 48 MKI

Fuel	diesel
Maximum speed (kn)	8
Cruising speed (kn)	7
Engine cooling system	freshwater heat exchanger
Drive	shaft
Engine controls	electrical & bowden cable
Gearbox	mechanical
Bowthruster	electric
Exhaust	watercooled
Propeller type	folding - Gori
Propeller blades	3
Propeller shaft material	stainless steel
Shaft lubrication	water
Manual bilge pump	One manual
Electric bilge pump	one electric and one high capacity emergency lump
Bilge alarm	yes
Electrical installation	12 / 24 / 220V
Generator	Whisper 10 Ultra
Start battery	140Ah - 12V
Service battery	6x 200AH - 24V
Generator battery	85Ah - 12V
Battery monitor	Mastervolt Mass Control 24V en Mastervolt Charger control 12V
Battery charger	2x Mastervolt Mass 24/75 - 1x Mastervolt Chagemaster 12/25-3
Inverter	1x Mastervolt Mass Sine 24/5000
Shorepower	with cable
Insulation transformer	Mastervolt Mass GI 3.5
Watermaker	Spectra Newport 400 - 24V

NAVIGATION

Compass	Silva Type 125
----------------	----------------



HALLBERG RASSY 48 MKI

Electric compass	Raymarine ST60 COMPASS
Depth sounder	Raymarine ST60 DEPTH
Log	Raymarine ST60 SPEED
Windset	Raymarine ST60 CH WIND & WIND
Repeater	Raymarine ST60 Graphic in owners cabin
VHF	Furuno DSC 60 & Raymarine Ray90 with wireless hub.
Autopilot	2x Raymarine ST7001+ AUTOPILOT display (one as backup) and 1x Raymarine ST6001 display inside with remote control.
Radar	Raymarine Quantum Q24C - 2016
Radar/GPS/plotter	2x Raymarine eS127 HybridTouch - 2016
Navtex	Furuno NX-300
Electronic chart(s)	Yes
AIS transceiver	Raymarine AIS650 Class B
Radio receiver	Furuno SSB 150W
EPIRB	Kannad Marine
Camera	Raymarine CP100
Navigation lights	yes
Extra info	Furuno Felcon 30 - inmarsat fleet F33 mobile earth station

EQUIPMENT

Fixed hardtop	yes
Cockpit cover	yes
Sun awning	yes
Cockpit table	High gloss varnished folding
Bathing platform	yes
Boarding ladder	stainless steel
Gangway	yes
Deck shower	Yes
Anchor	CQR Plough
Anchor chain	Stainless steel
Windlass	electrical - Lewmar



HALLBERG RASSY 48 MKI

Capstan	yes
Deck wash	yes
Davits	stainless steel - not mounted
Davits controls	manual
Sea railing	wire - stainless steel
Grab rail (superstructure)	teak
Railing side opening gates	On both sides
Pushpit	yes
Pulpit	yes
Life raft	container - Plastimo (2021)
Life raft (pers)	4
Lifebuoy	yes
Horn	
Radar reflector	yes
Fenders	yes
Mooring lines	yes
TV	LG - with electric lift
TV receiver	yes
Satellite	yes
Radio-cd player	Pioneer also with DVD player - 2016
iPod connection	yes
Cockpit speakers	yes
Speakers in salon	yes
Fire extinguisher	yes
Auto extinguisher system	yes

RIGGING

Rigging	
Standing rigging	wire
Brand mast	Seldén
Material mast	aluminium



HALLBERG RASSY 48 MKI

Spreaders	Triple
Mainsail	Elvstrøm Sails - 2016
Fully battened mainsail	yes
Stoway mast	Furlex Seldén Hydraulic
Cutterstay	Removable
Jib	yes
Genoa	Elvstrøm Sails with UV - 2016
Genoa furler	Furlex Seldén Hydraulic
Gennaker	yes
Reefing System	main in-mast furling
Backstay adjuster	hydraulic Navtec
Boomvang	Seldén Rodkicker. Gassping replaced 2016
Primary sheet winch	Mainsheet 2x Lewmar 44 - electric
Genoa sheetwinches	2x Lewmar 64 - electric
Halyard winches	2x Lewmar 44 + 1x Lewmar 8 on mast
Spi-pole	carbon 2x
Gennaker pole	Stainless steel - Fixed on bow
Isolated backstay	yes



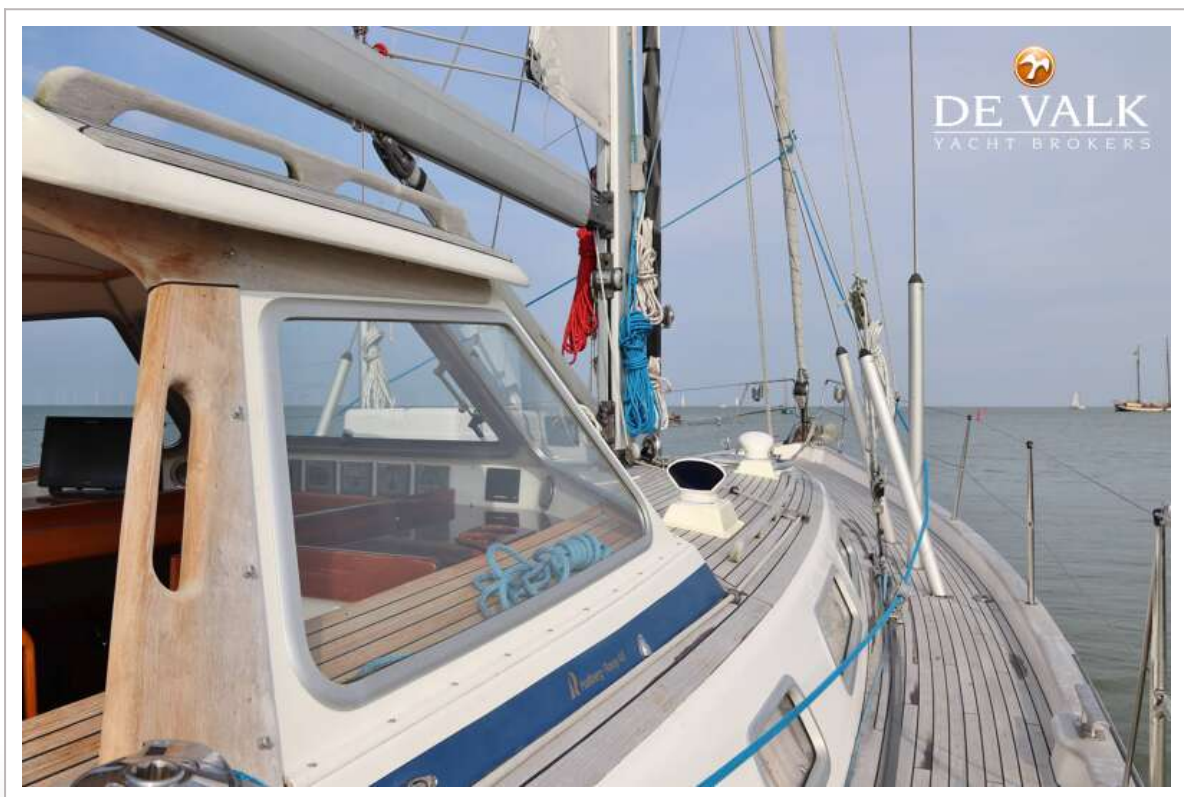
HALLBERG RASSY 48 MKI



HALLBERG RASSY 48 MKI



HALLBERG RASSY 48 MKI



HALLBERG RASSY 48 MKI



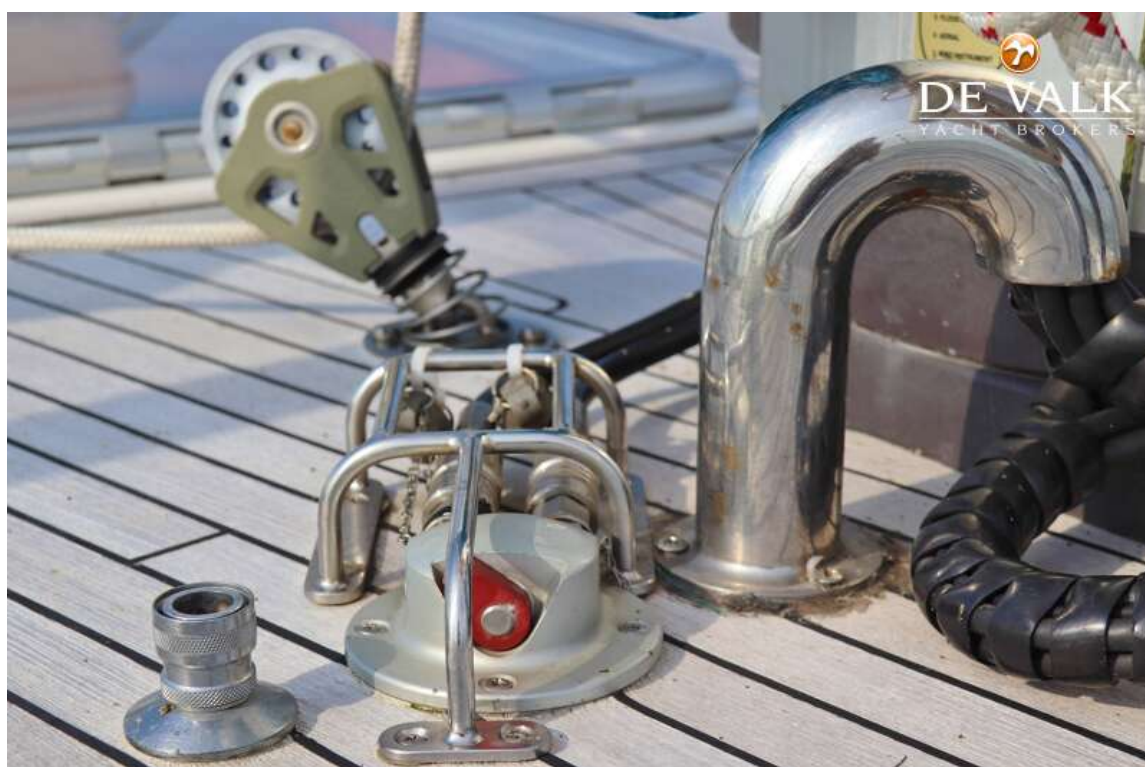
HALLBERG RASSY 48 MKI



HALLBERG RASSY 48 MKI



HALLBERG RASSY 48 MKI



HALLBERG RASSY 48 MKI



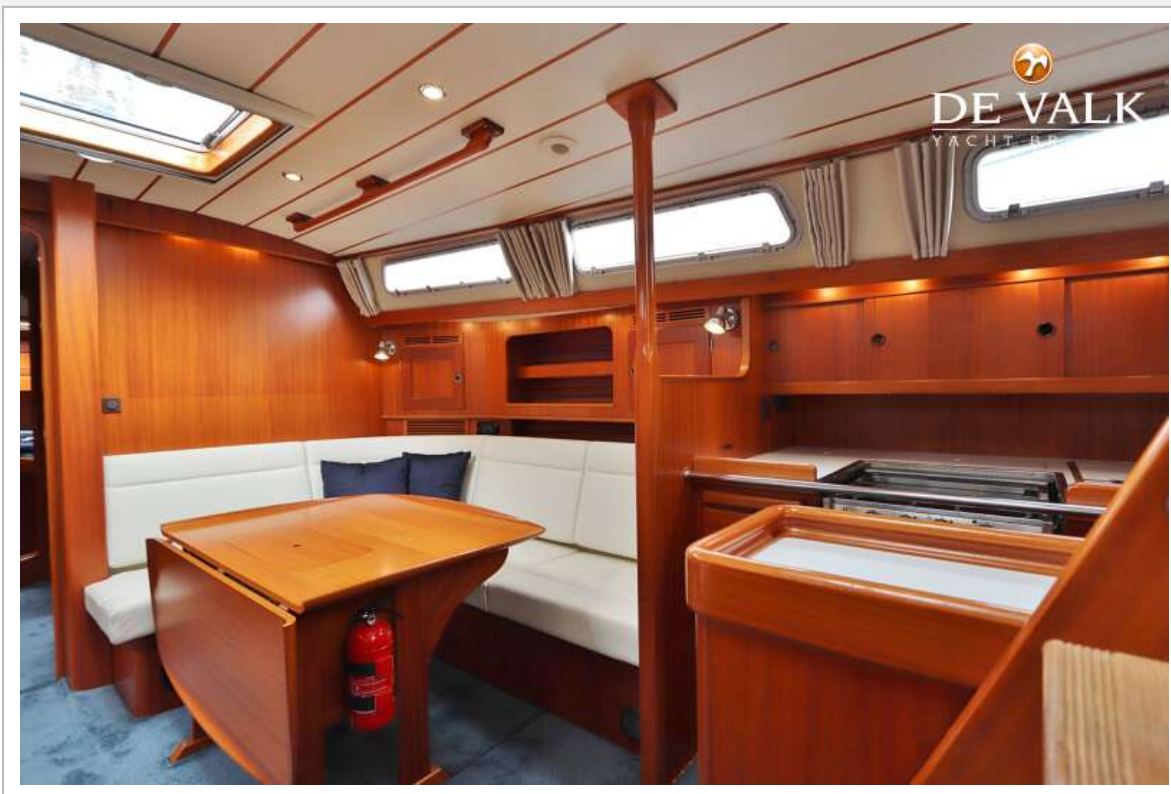
HALLBERG RASSY 48 MKI



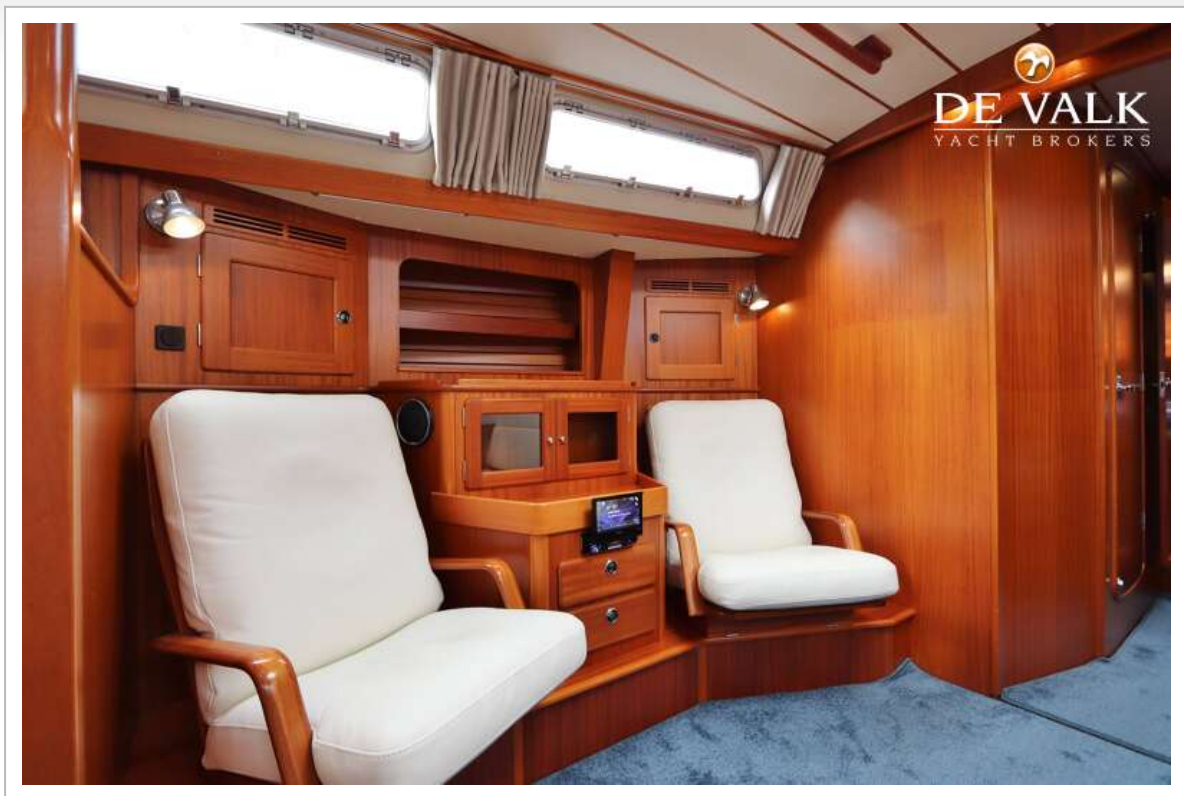
HALLBERG RASSY 48 MKI



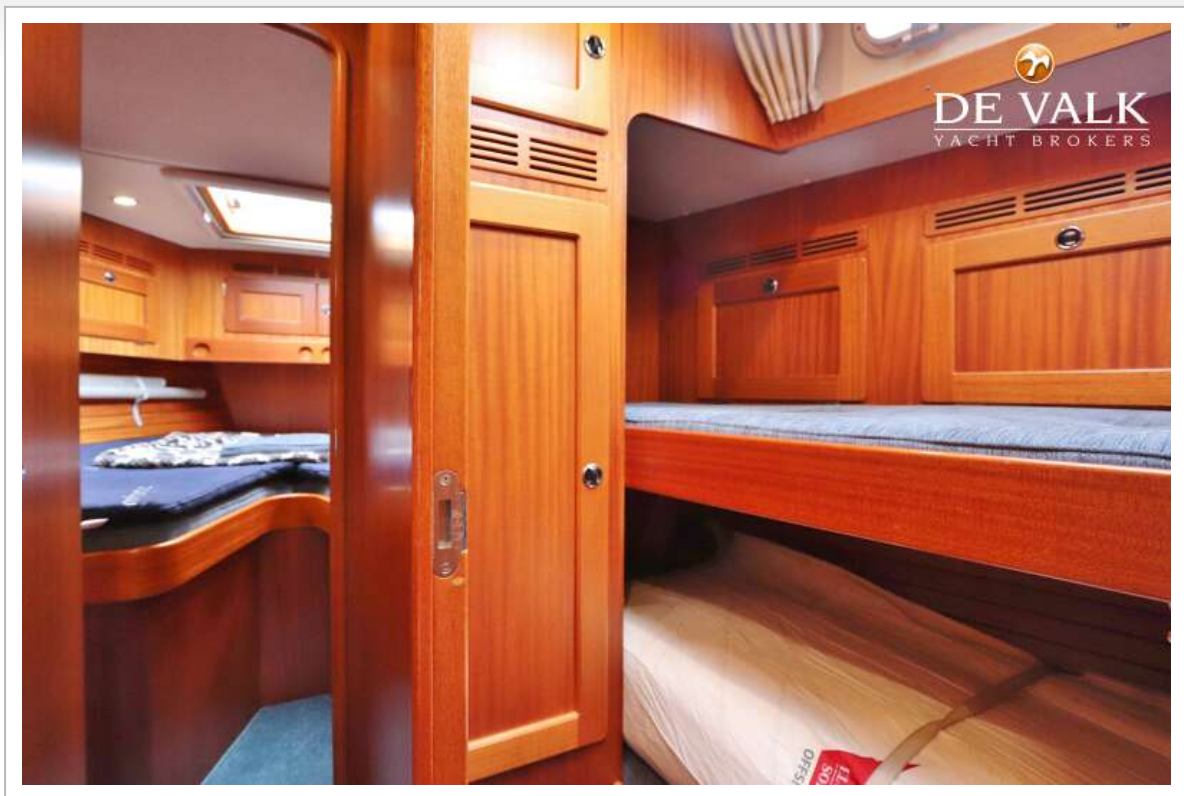
HALLBERG RASSY 48 MKI



HALLBERG RASSY 48 MKI



HALLBERG RASSY 48 MKI



HALLBERG RASSY 48 MKI



HALLBERG RASSY 48 MKI



HALLBERG RASSY 48 MKI



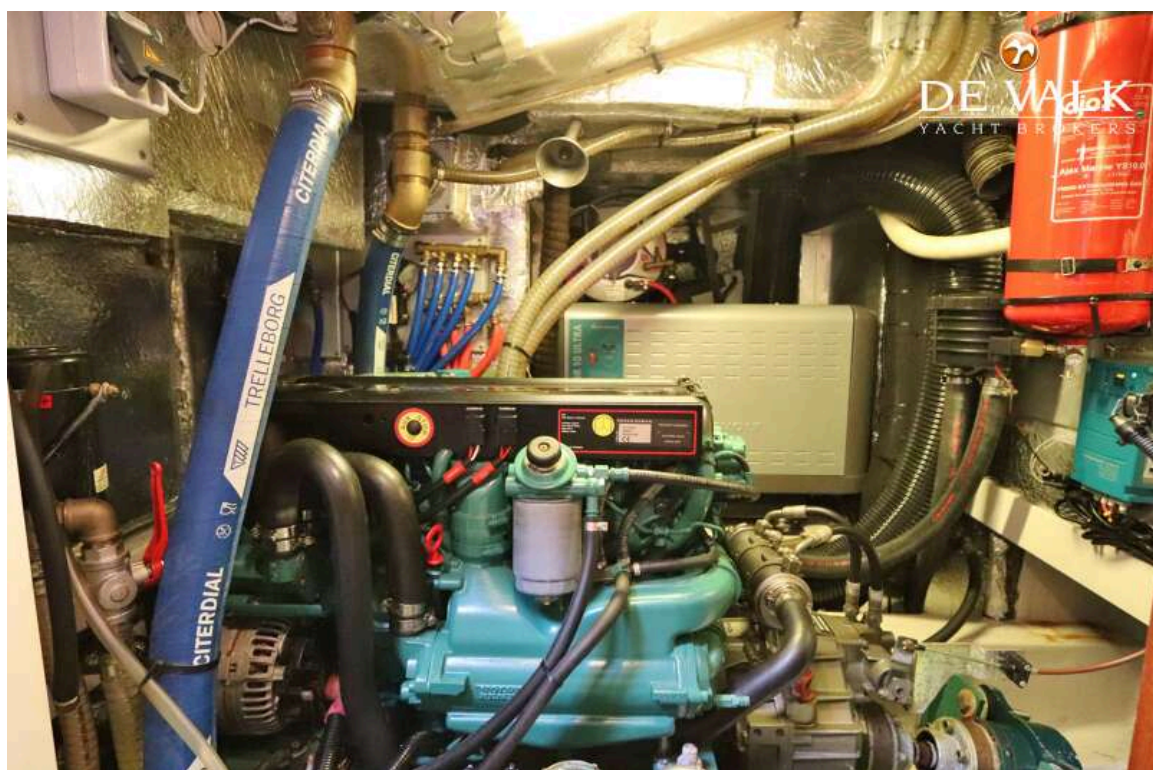
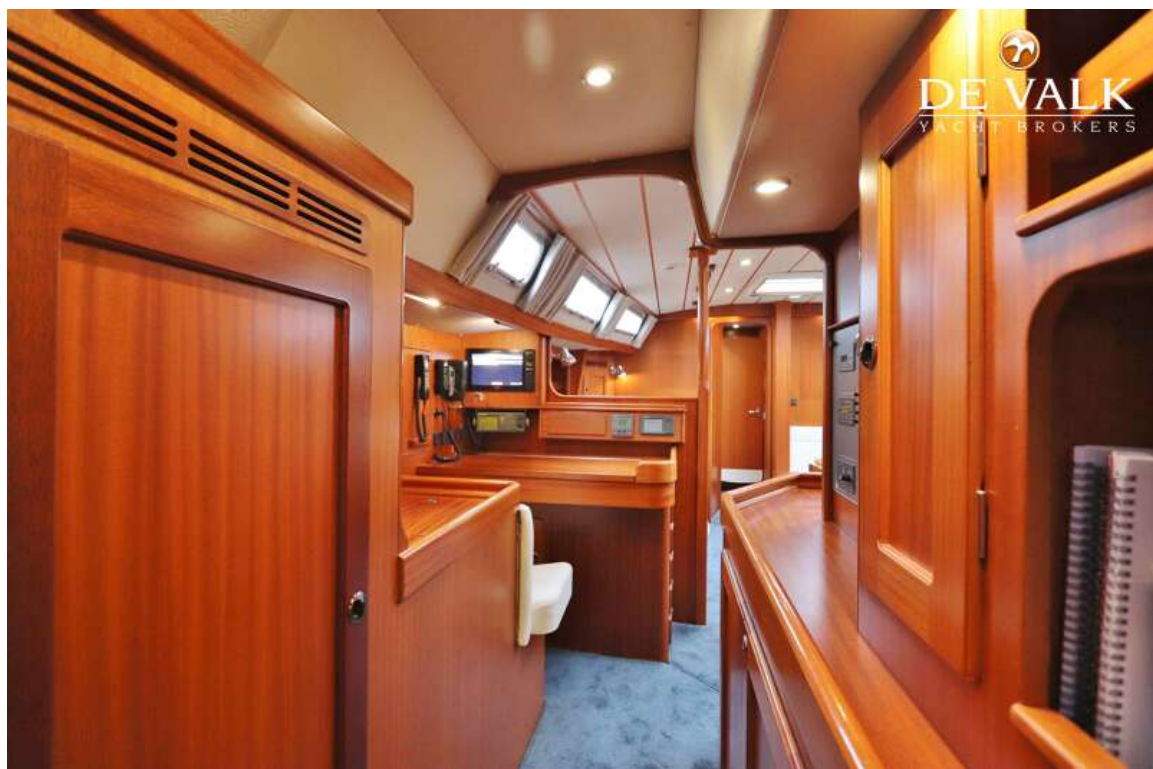
HALLBERG RASSY 48 MKI



HALLBERG RASSY 48 MKI



HALLBERG RASSY 48 MKI



HALLBERG RASSY 48 MKI

