



## HALLBERG RASSY 352

# HALLBERG RASSY 352

## BROKER'S COMMENTS

Hallberg Rassy introduced the 352 model in 1979 with the thought "This will be the yacht of the future", this proved to be good foresight! Copied by many, but never surpassed. Excellent accommodation, good headroom, lots of storage space and gives you the authentic yacht feeling! The current owner has maintained this yacht very well and made the necessary updates, such as new upholstery, new cockpit tent and a new mattress in the owner's cabin. This Hallberg Rassy 352, "Windekind", is a very complete yacht and ready for the adventures with her new owner!

*Henri van Eelen*

## SPECIFICATIONS

|                     |                         |                |                        |
|---------------------|-------------------------|----------------|------------------------|
| <b>Dimensions</b>   | 10.54 x 3.38 x 1.67 (m) | <b>Builder</b> | Hallberg Rassy VARV AB |
| <b>Built</b>        | 1988                    | <b>Cabins</b>  | 2                      |
| <b>Material</b>     | GRP                     | <b>Berths</b>  | 6                      |
| <b>Engine(s)</b>    | 1 x Volvo 2003T diesel  | <b>Hp/Kw</b>   | 43.00 (hp), 31.61 (kw) |
| <b>Asking price</b> | sold (VAT )             | <b>Lying</b>   | contact Hindeloopen    |

## CONTACT

|                     |   |                  |                       |
|---------------------|---|------------------|-----------------------|
| <b>Sales office</b> | De Valk Hindeloopen B.V.                    | <b>Telephone</b> | +31 514 52 40 00      |
| <b>Address</b>      | Oosterstrand 1<br>8713 JS Hindeloopen<br>NL | <b>E-mail</b>    | hindeloopen@devalk.nl |

## DISCLAIMER

These particulars are given in good faith as supplied but cannot be guaranteed.



## GENERAL

|                            |                                  |
|----------------------------|----------------------------------|
| Model                      | HALLBERG RASSY 352               |
| Type                       | sailing yacht                    |
| LOA (m)                    | 10,54                            |
| Beam (m)                   | 3,38                             |
| Draft (m)                  | 1,67                             |
| Air draft (m)              | 17,00                            |
| Headroom (m)               | 1,85                             |
| Year built                 | 1988                             |
| Builder                    | Hallberg Rassy VARV AB           |
| Country                    | Sweden                           |
| Designer                   | Christoph Rassy & Olle Enderlein |
| Displacement (t)           | 7                                |
| Ballast (tonnes)           | cast iron 3                      |
| Hull material              | GRP                              |
| Hull colour                | off-white                        |
| Hull shape                 | S-bilged                         |
| Keel type                  | fin keel                         |
| Superstructure material    | GRP                              |
| Rubbing strake             |                                  |
| Deck material              | GRP                              |
| Deck finish                | teak                             |
| Superstructure deck finish | non-skid moulded in              |
| Cockpit deck finish        | teak                             |
| Antifouling (year)         | 2019                             |
| Dorades                    | 4x                               |
| Window frame               | aluminium                        |
| Window material            | tempered glass                   |
| Deckhatch                  | 4x                               |
| Fuel tank (litre)          | stainless steel 140L             |
| Fuel tank 2 (litre)        |                                  |



|                              |                |
|------------------------------|----------------|
| Level indicator (fuel tank)  | yes            |
| Freshwater tank (litre)      | GRP 350L       |
| Level indicator (freshwater) | yes            |
| Wheel steering               | cable steering |
| Emergency tiller             | yes            |

## ACCOMMODATION

|                         |  |
|-------------------------|--|
| Cabins                  | 2                                      |
| Berths                  | 6                                      |
| Interior                | mahogany                               |
| Floor                   | teak and holly                         |
| Aft deck                | yes                                    |
| Saloon                  | yes                                    |
| Headroom saloon (m)     | 1,85m                                  |
| Heating                 | diesel ducted hot air Eberspacher 2016 |
| Navigation center       | yes                                    |
| Chart table             | yes                                    |
| Aft Cabin               | yes                                    |
| Dining room             | yes                                    |
| Sliding door to cockpit | yes                                    |
| Galley                  | yes                                    |
| Countertop              | wood                                   |
| Sink                    | stainless steel 2x                     |
| Cooker                  | calor gas Optimus                      |
| Oven                    | yes                                    |
| Fridge                  | yes                                    |
| Freezer                 | In fridge                              |
| Hot water system        | 220V + engine Boiler 40L               |
| Owners cabin            | double bed + single bed                |
| Bed length (m)          | 1,90                                   |
| Wardrobe                | hanging                                |



|                |  |
|----------------|--|
| Bathroom       | shared   |
| Toilet         | shared   |
| Toilet system  | electric   |
| Wash basin     | in the bathroom  |
| Shower         | shared   |
| Guest cabin 1  | v-bed  |
| Bed length (m) | yes  |
| Wardrobe       | hanging and shelves                                      |
| Bathroom       | shared   |
| Toilet         | shared   |
| Toilet system  | electric   |
| Wash basin     | in the bathroom  |
| Shower         | shared   |
| Extra info     | Ownerscabin Neptune matras 2021 Interior upholstery 2016 |

## MACHINERY

|                       |                           |
|-----------------------|---------------------------|
| No of engines         | 1                         |
| Make                  | Volvo                     |
| Type                  | 2003T                     |
| HP                    | 43                        |
| kW                    | 31,61                     |
| Fuel                  | diesel                    |
| Year installed        | 1988                      |
| Year of overhaul      | 2009                      |
| Engine hours          | 700                       |
| Engine cooling system | freshwater heat exchanger |
| Drive                 | shaft                     |
| Propeller type        | feathering Max Prop       |
| Propeller blades      | yes                       |
| Start battery         | 2018                      |
| Service battery       | 2x 2015                   |



## NAVIGATION

|                   |  |
|-------------------|--|
| Depth sounder     | Raymarine ST60                             |
| Log               | Raymarine ST60                             |
| Windset           | Raymarine ST60                             |
| Repeater          | Autohelm ST50 (inside)                     |
| VHF               | Shipmate RS 8300                           |
| Autopilot         | Autohelm ST7000                            |
| Radar             | Raymarine SL70                             |
| GPS               | Autohelm ST50 (inside) Garmin 128 (inside) |
| Navtex            | yes  |
| Navigation lights | yes  |

## EQUIPMENT

|                            |                              |
|----------------------------|------------------------------|
| Fixed windscreen           | yes                          |
| Sprayhood                  | 2021                         |
| Cockpit cover              | 2021                         |
| Boarding ladder            | stainless steel              |
| Anchor                     | CQR Plough                   |
| Anchor chain               | yes                          |
| Windlass                   |                              |
| Sea railing                | wire 2021                    |
| Grab rail (superstructure) | aluminium 2x fixed sprayhood |
| Pushpit                    | yes                          |
| Pulpit                     | yes                          |
| Wiper                      | yes                          |
| Radar reflector            | yes                          |
| Fenders                    | yes                          |
| Mooring lines              | yes                          |
| Radio-cd player            | JVC                          |
| Cockpit speakers           | yes                          |
| Speakers in salon          | yes                          |



Clock - barometer

2x

## RIGGING

Rigging

sloop

Standing rigging

wire

Brand mast

Seldén

Material mast

aluminium

Spreaders

1x

Mainsail

2008 Quantum

Battcars

yes

High aspect

2015 Quantum 110%

Genoa

yes

Genoa furler

yes

Gennaker

2008 hardly used

Reefing System

quick-one-line-reefing

Backstay adjuster

Primary sheet winch

2x Lewmar ST43

Spi-pole

aluminium



# HALLBERG RASSY 352





# HALLBERG RASSY 352



# HALLBERG RASSY 352





# HALLBERG RASSY 352



# HALLBERG RASSY 352





# HALLBERG RASSY 352



# HALLBERG RASSY 352

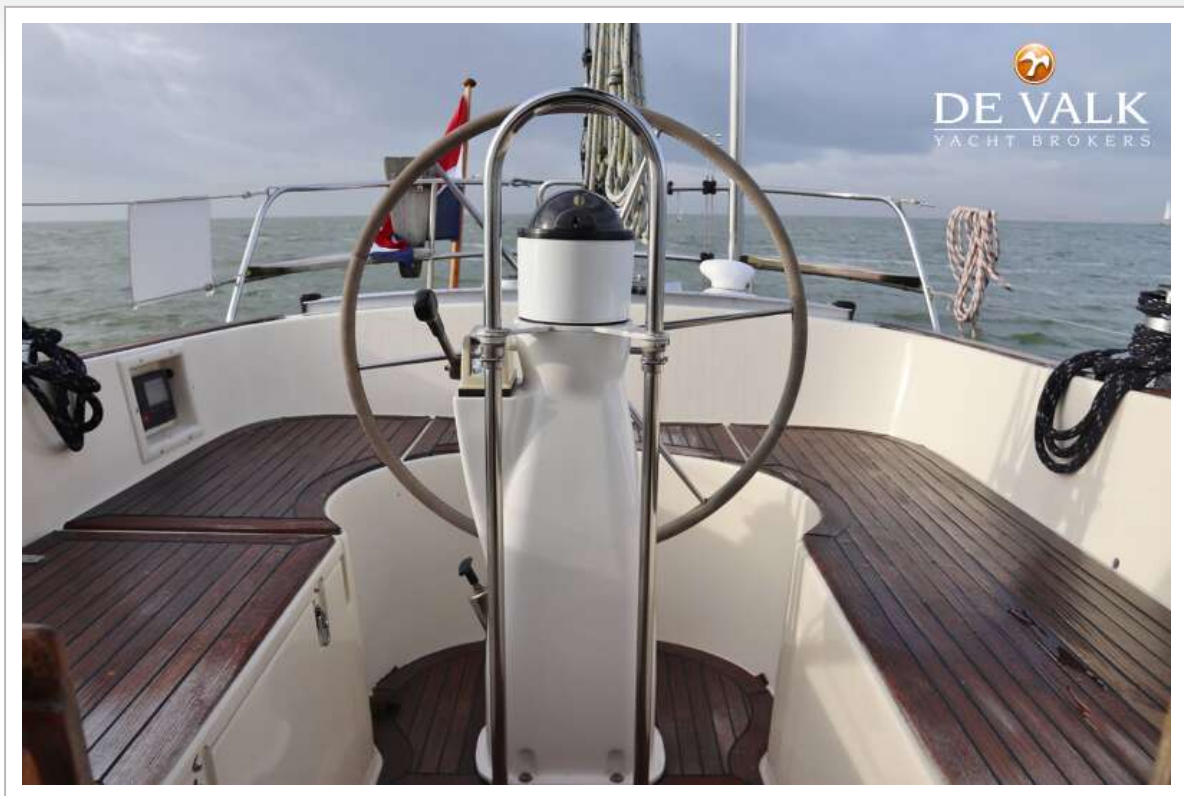




# HALLBERG RASSY 352



# HALLBERG RASSY 352





# HALLBERG RASSY 352



# HALLBERG RASSY 352

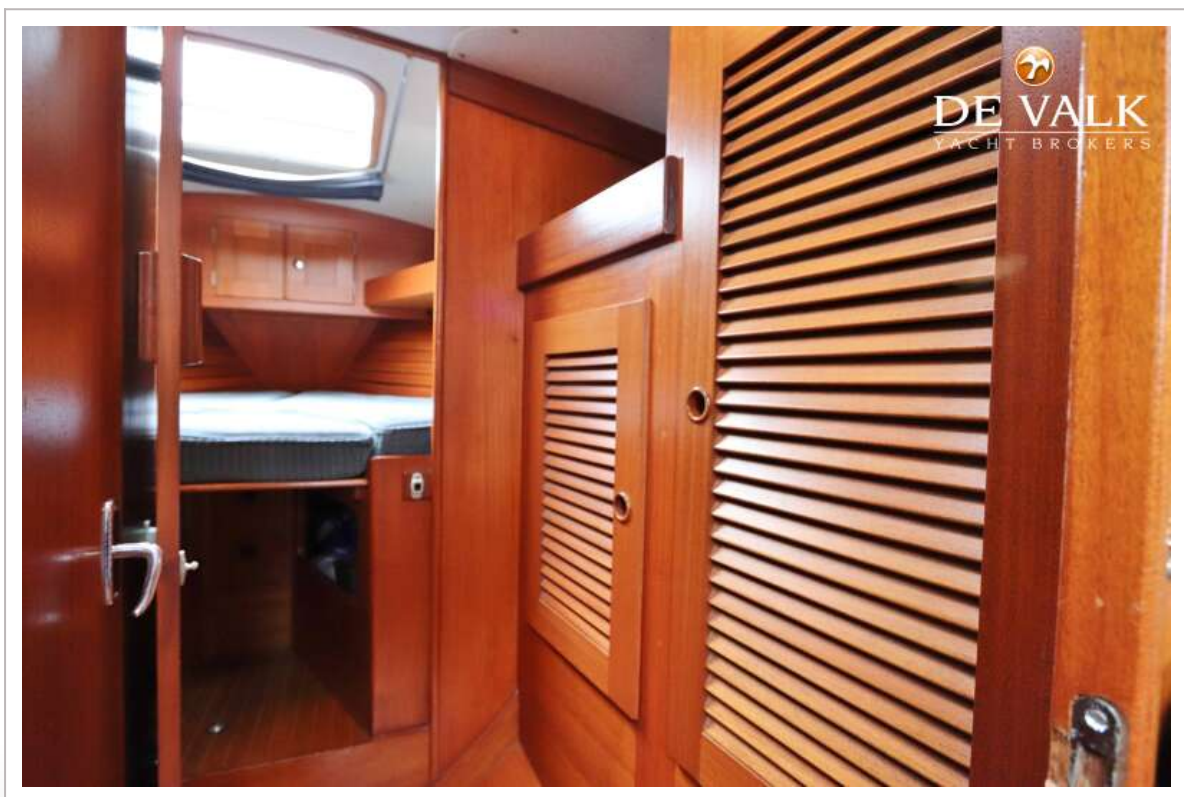
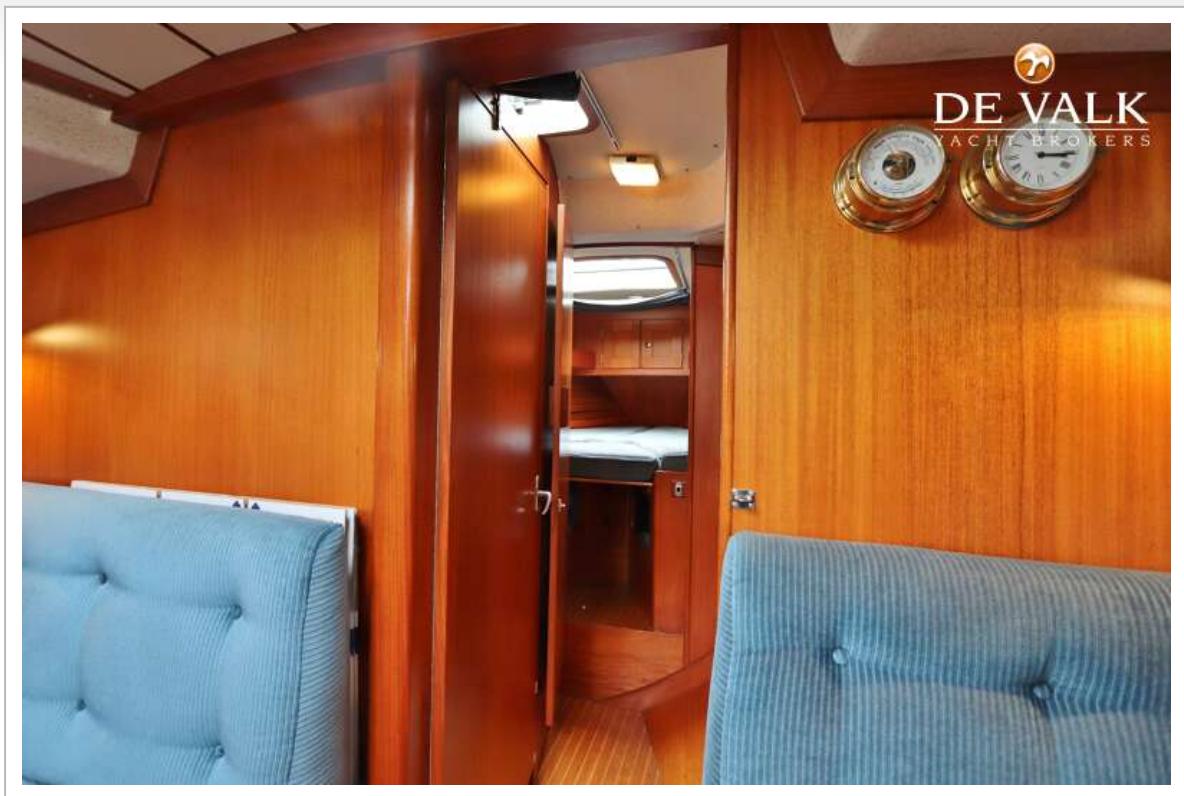




# HALLBERG RASSY 352

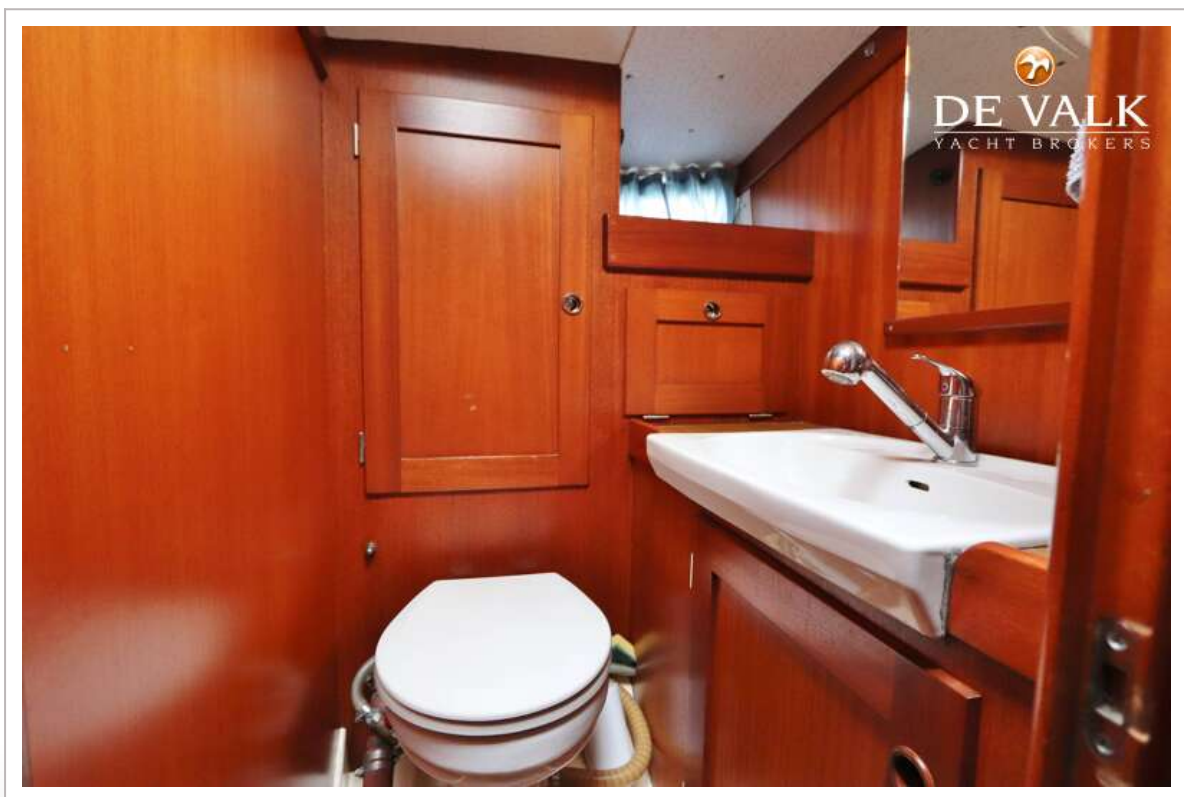


# HALLBERG RASSY 352

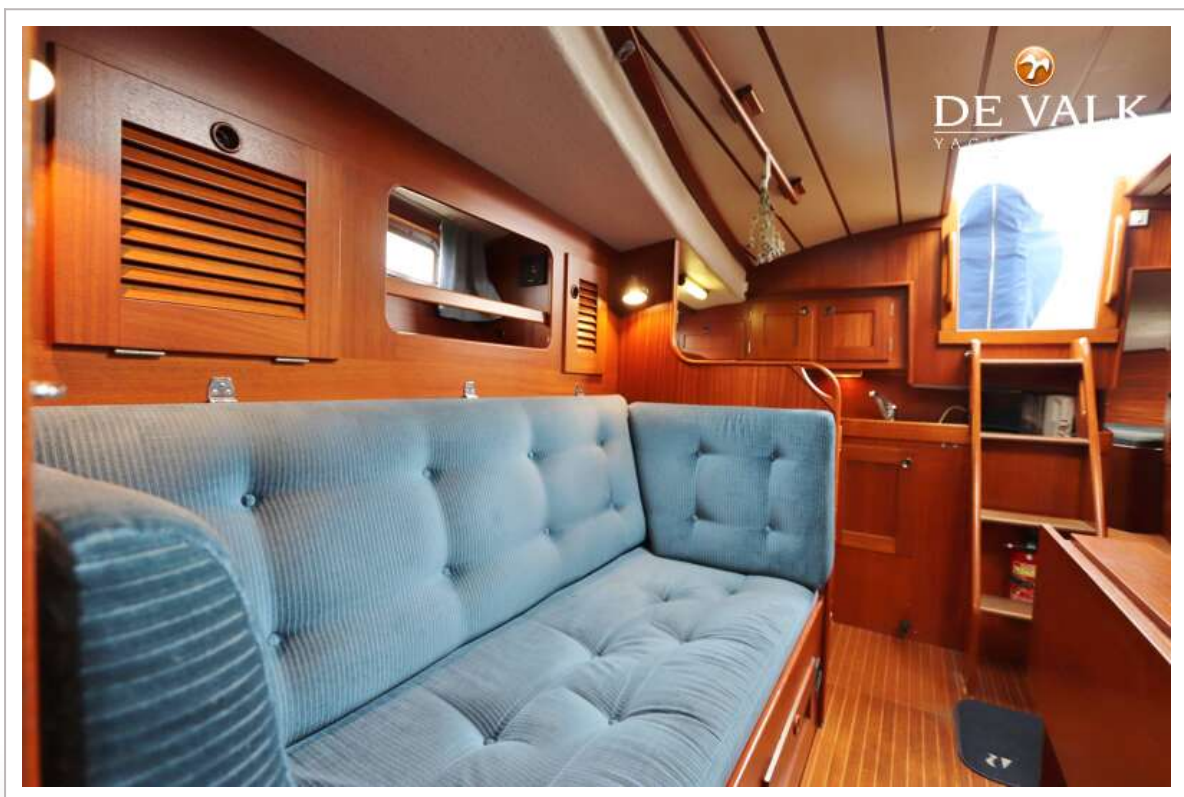




# HALLBERG RASSY 352

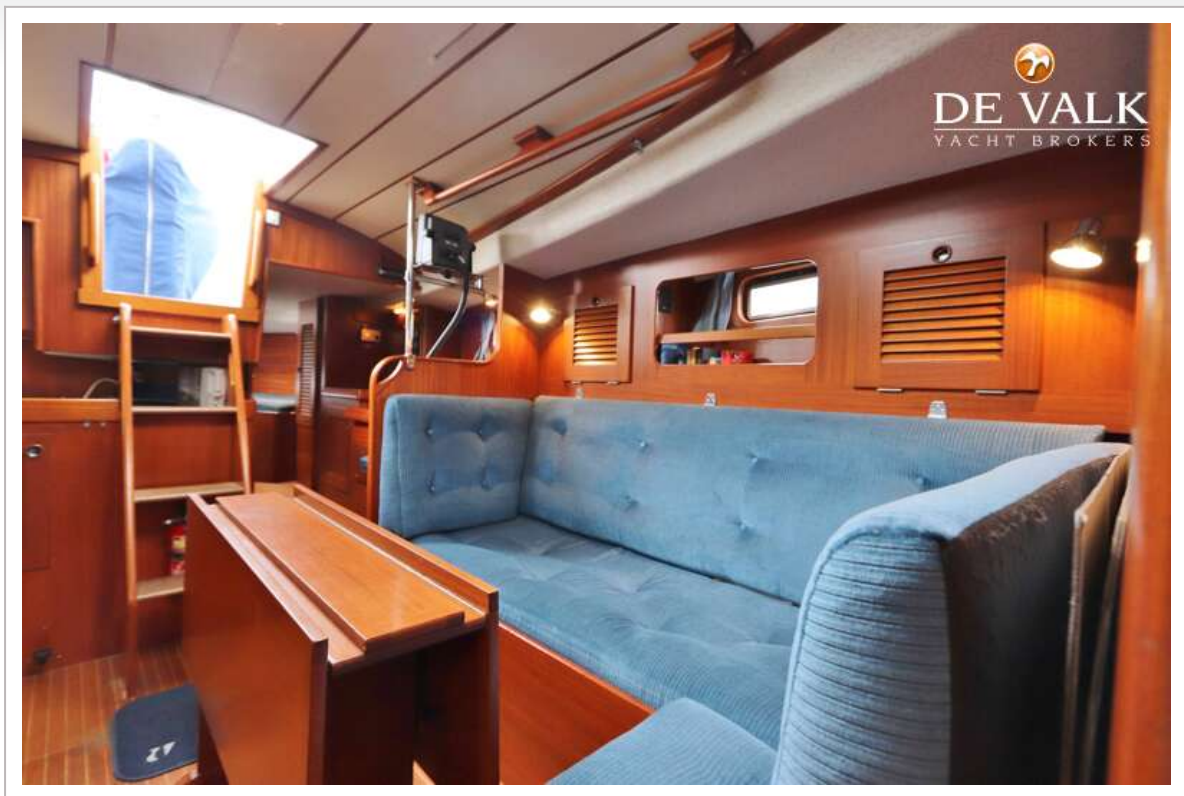


# HALLBERG RASSY 352

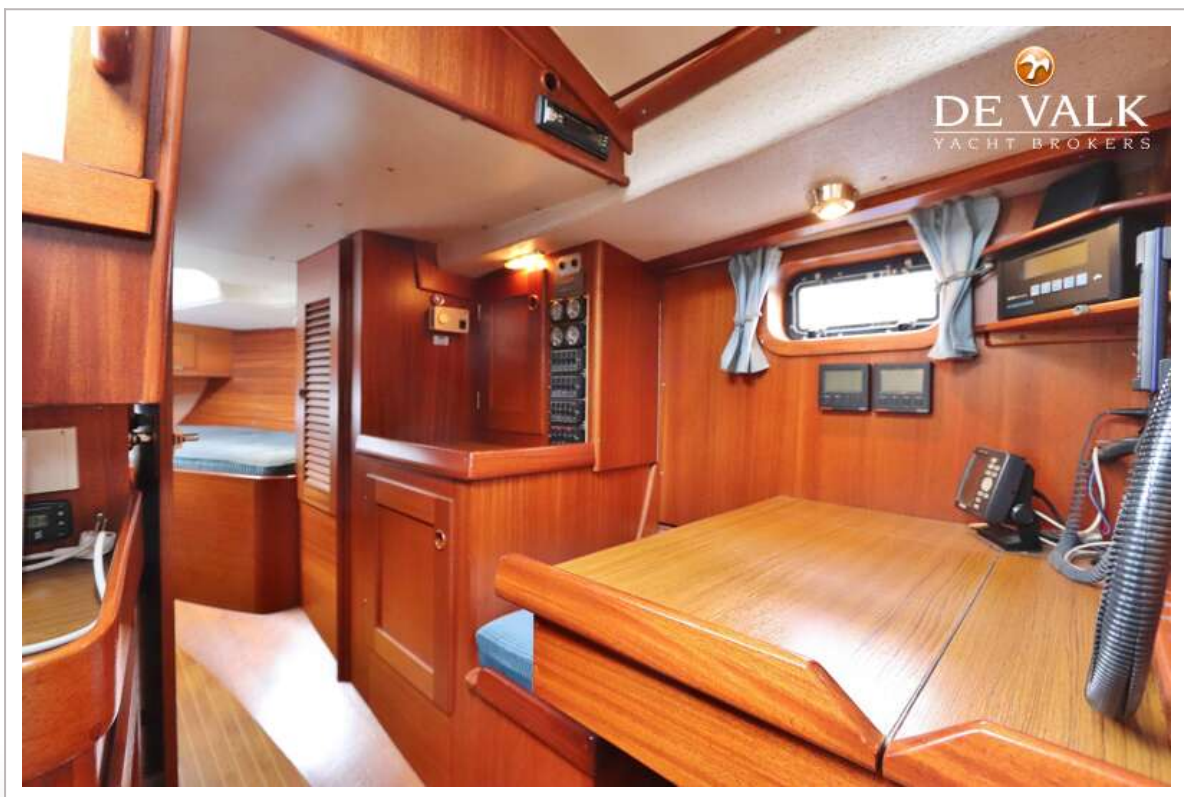




# HALLBERG RASSY 352

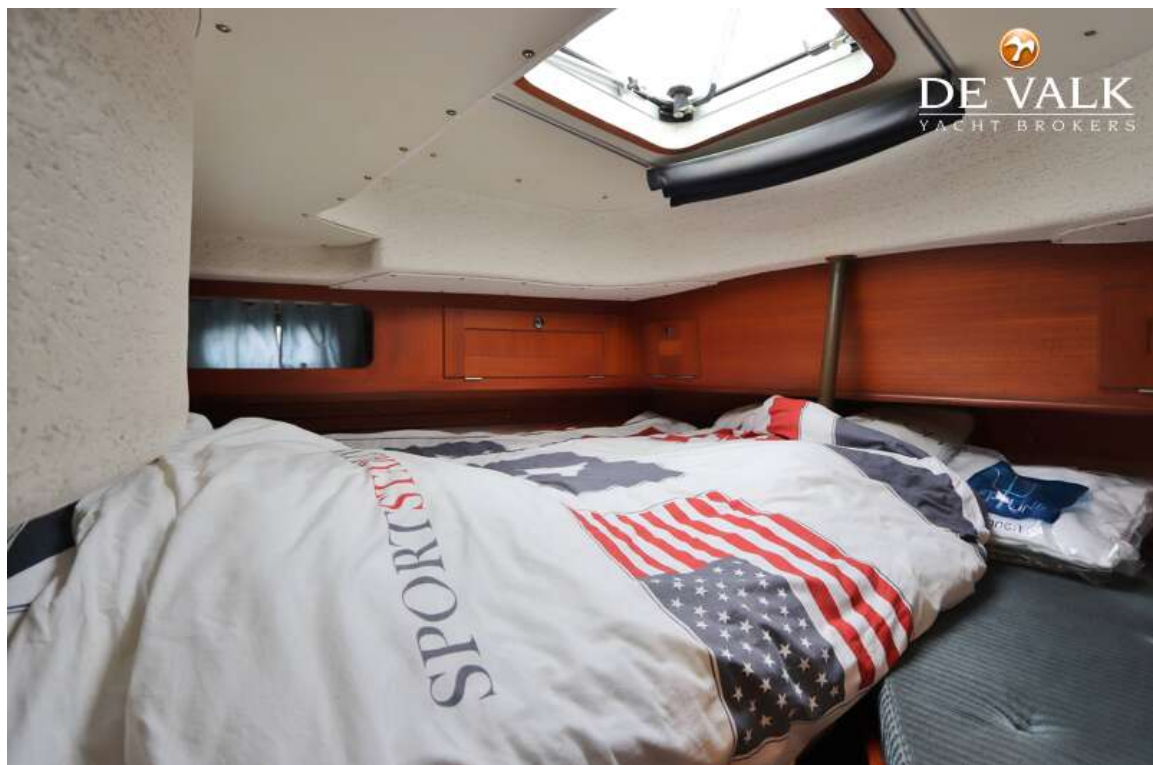
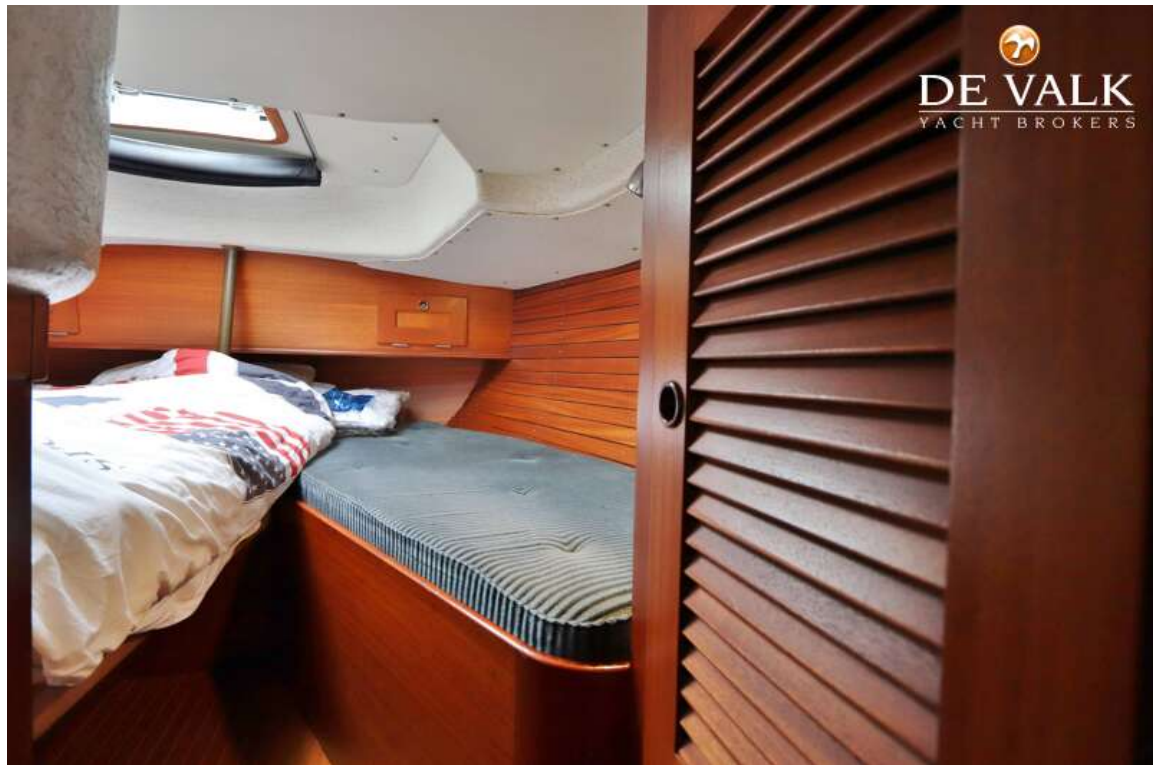


# HALLBERG RASSY 352





# HALLBERG RASSY 352



# HALLBERG RASSY 352

