



DE VALK  
YACHT BROKERS



DEHLER 41 CR



DE VALK  
YACHT BROKERS

BROKERAGE | CHARTER | BERTHS | FINANCE | INSURANCE | YACHT MANAGEMENT

# DEHLER 41 CR

## BROKER'S COMMENTS

Dehler is not only known for its regatta successes, but also for its impeccable quality. This Dehler 41 CR is particularly interesting because of its good complete equipment and the well executed maintenance. The Dehler 41 CR is the result of more than 30 years of yachtbuilding experience, with details that make this yacht safe and easy to handle, in addition to her speed. She is moored in our sales marina in Hindeloopen and is available for viewing 24/7!

*Henri van Eelen*

## SPECIFICATIONS

<b>Dimensions</b>	12.45 x 3.90 x 1.95 (m)	<b>Builder</b>	Dehler Yachtbau GmbH
<b>Built</b>	1997	<b>Cabins</b>	2
<b>Material</b>	GRP	<b>Berths</b>	6
<b>Engine(s)</b>	1 x Yanmar 3JH2-TE diesel	<b>Hp/Kw</b>	48.00 (hp), 35.00 (kw)
<b>Asking price</b>	sold (VAT )	<b>Lying</b>	at sales office

## CONTACT

<b>Sales office</b>	De Valk Hindeloopen B.V.	<b>Telephone</b>	+31 514 52 40 00
<b>Address</b>	Oosterstrand 1 8713 JS Hindeloopen NL	<b>E-mail</b>	hindeloopen@devalk.nl

## DISCLAIMER

These particulars are given in good faith as supplied but cannot be guaranteed.



## GENERAL

Model	DEHLER 41 CR
Type	sailing yacht
LOA (m)	12,45
LWL (m)	11,05
Beam (m)	3,90
Draft (m)	1,95
Air draft (m)	21,00
Headroom (m)	1,95
Year built	1997
Builder	Dehler Yachtbau GmbH
Country	Germany
Designer	Judel & Vrolijk
Displacement (t)	8,9
Ballast (tonnes)	cast iron and lead 3,6
CE norm	A
Hull material	GRP
Hull colour	off-white
Hull shape	round-bilged
Keel type	fin keel with bulb
Superstructure material	GRP
Rubbing strake	plastic With rubber
Deck material	GRP
Deck finish	non-skid paint
Superstructure deck finish	non-skid moulded in
Cockpit deck finish	teak
Dorades	2x
Window frame	aluminium
Window material	polycarbonate
Deckhatch	6x
Fuel tank (litre)	stainless steel Approx 140 ltr.



Level indicator (fuel tank)	yes
Freshwater tank (litre)	polyethylene Approx. 2x 200 ltr.
Level indicator (freshwater)	yes
Wheel steering	mechanical Solimar
Outside helm position	
Emergency tiller	yes
Extra info	Holding tank supplied separately. No deck extraction.

## ACCOMMODATION

Cabins	2
Berths	6
Interior	cherry
Floor	wood
Open cockpit	yes
Heating	diesel ducted hot air Eberspächer
Navigation center	yes
Chart table	yes
Aft Cabin	1x
Galley	side kitchen
Countertop	plastic
Sink	stainless steel
Cooker	calor gas Allpa - 3 burner
Oven	In cooker
Fridge	Yes
Hot water system	220V + engine
Water pressure system	electrical
Owners cabin	double bed Forward cabin
Bed length (m)	> 2.00 mtr.
Wardrobe	hanging/drawers/shelves
Bathroom	en suite
Toilet	Johnson



Toilet system	manual
Wash basin	
Shower	
Guest cabin 1	double bed Aft cabin
Bed length (m)	> 2,00 mtr.
Wardrobe	hanging and shelves
Bathroom	shared
Toilet	Jabsco
Toilet system	manual
Wash basin	

## MACHINERY

No of engines	1
Make	Yanmar
Type	3JH2-TE
HP	48
kW	35,00
Fuel	diesel
Year installed	1997
Maximum speed (kn)	7,5
Cruising speed (kn)	6
Consumption (l/hr)	3
Engine hours	3400
Engine cooling system	freshwater heat exchanger
Drive	shaft
Shaft seal	New in 2016
Engine controls	bowden cable
Gearbox	mechanical
Bowthruster	electric Side-Power - SE80T/185 - 12V
Exhaust	watercooled
Propeller type	feathering



Propeller blades	3
Propeller shaft material	stainless steel
Shaft lubrication	water
Manual bilge pump	yes
Electric bilge pump	yes
Electrical installation	12V & 220V
Start battery	New 2021
Service battery	2014 2x 250Ah
Bowthruster battery	90Ah - Varta Professional - 2018
Battery monitor	yes
Battery charger	yes
Shorepower	with cable

## NAVIGATION

Compass	Plastimo Olympic 135
Multi control display	2x Raymarine ST70 Multi-talented at helm
Depth sounder	Raymarine i50
Log	Raymarine i50
Windset	Raymarine i50
VHF	Simrad RS35
Autopilot	Raymarine ST70 at helm Raymarine P70 at entrance
Radar	Raytheon
Radar/GPS/plotter	Raymarine Axiom 9
AIS receiver	yes
EPIRB	yes
Navigation lights	yes

## EQUIPMENT

Sprayhood with grab rail	yes
Cockpit cushions	2x
Cockpit table	yes



Bathing platform	yes
Boarding ladder	stainless steel
Transom door	yes
Bow ladder	yes
Deck shower	yes
Anchor	Bruce
Anchor chain	50 mtr. stainless steel
Windlass	electrical Lewmar
Sea railing	wire
Grab rail (superstructure)	teak
Pushpit	yes
Pulpit	yes
Lifejackets	2x
Lifebuoy	yes
Danbuoy	yes
Safety lines on deck	yes
Radar reflector	yes
Fenders	yes
Mooring lines	4x
Spare parts	For engine
Radio-cd player	Kenwood
Cockpit speakers	yes
Speakers in salon	yes
Fire extinguisher	yes

## RIGGING

Rigging	sloop
Standing rigging	wire Checked 2021
Brand mast	Seldén
Material mast	aluminium
Spreaders	2 pair



<b>Mainsail</b>	2013
<b>Fully battened mainsail</b>	yes
<b>Stoway mast</b>	yes
<b>High aspect</b>	2018 - with cover
<b>Genoa</b>	2019
<b>Genoa furler</b>	Furlex
<b>Gennaker</b>	Leach moderate, nice colours
<b>Reefing System</b>	main in-mast furling
<b>Backstay adjuster</b>	mechanical
<b>Boomvang</b>	gasspring
<b>Genoa sheetwinches</b>	2x Harken ST48
<b>Halyard winches</b>	2x Lewmar ST30 on mast
<b>Multifunctional winches</b>	2x Harken ST44 electric
<b>Spi-pole</b>	aluminium
<b>Extra info</b>	mainsail vertical battened and extended





# DEHLER 41 CR



# DEHLER 41 CR



# DEHLER 41 CR





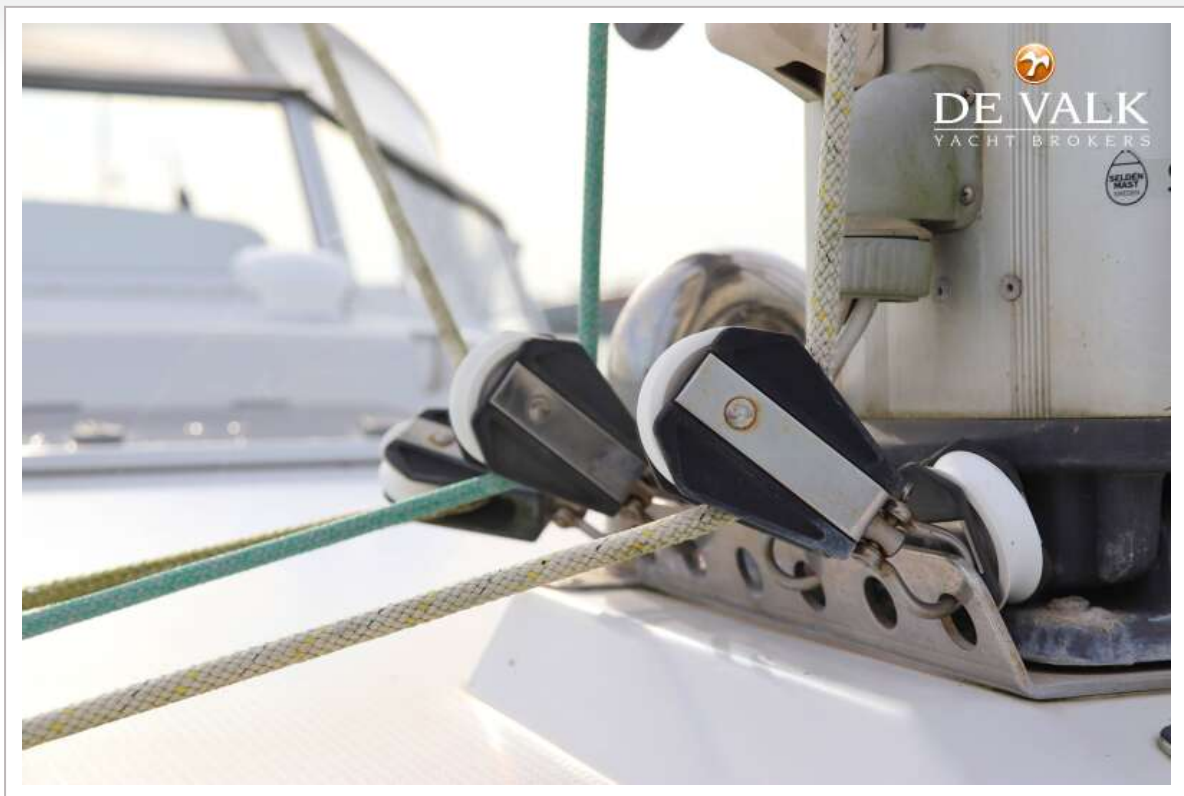
# DEHLER 41 CR



# DEHLER 41 CR



# DEHLER 41 CR





# DEHLER 41 CR



# DEHLER 41 CR





# DEHLER 41 CR



# DEHLER 41 CR



# DEHLER 41 CR





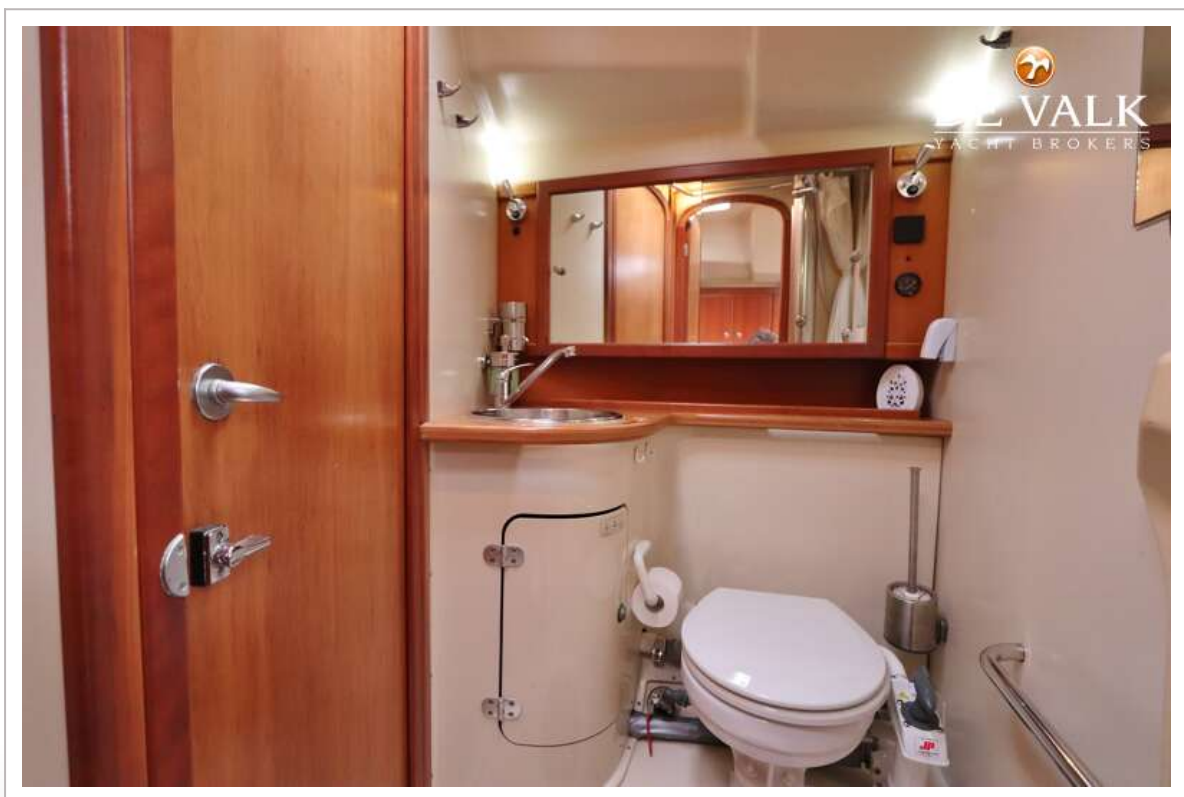
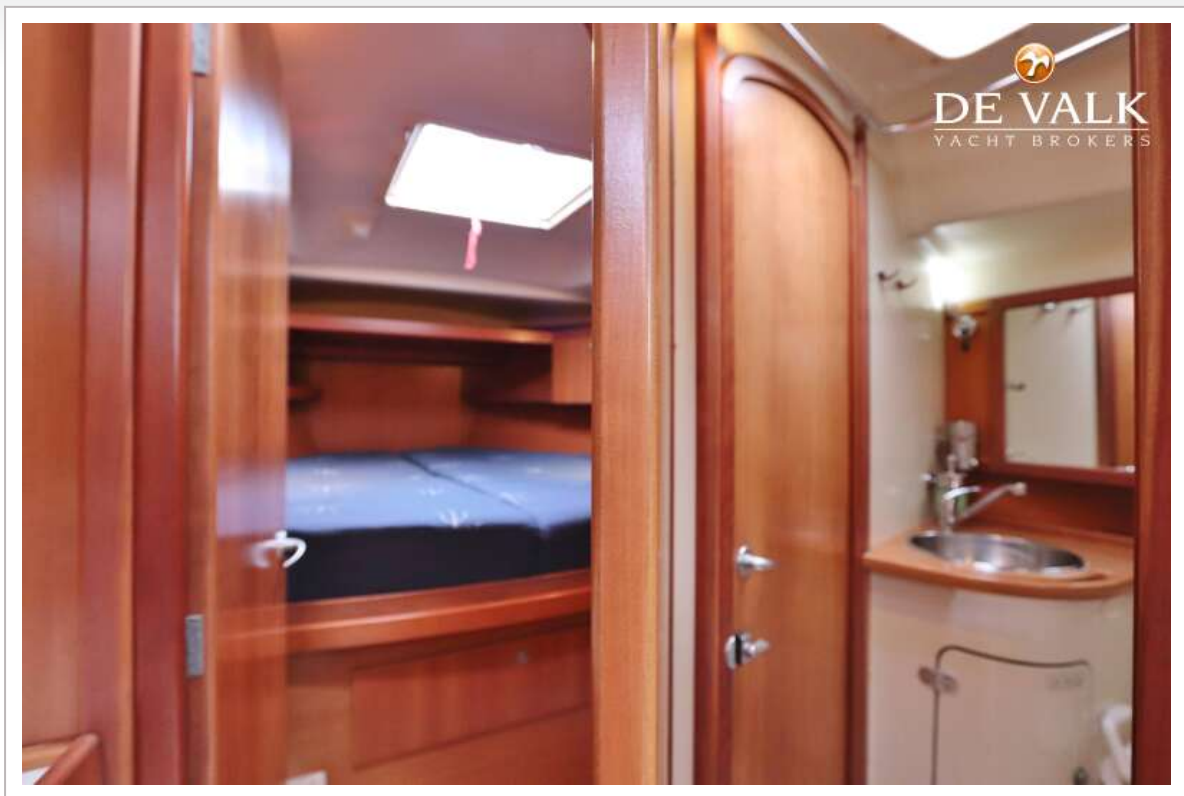
# DEHLER 41 CR



# DEHLER 41 CR

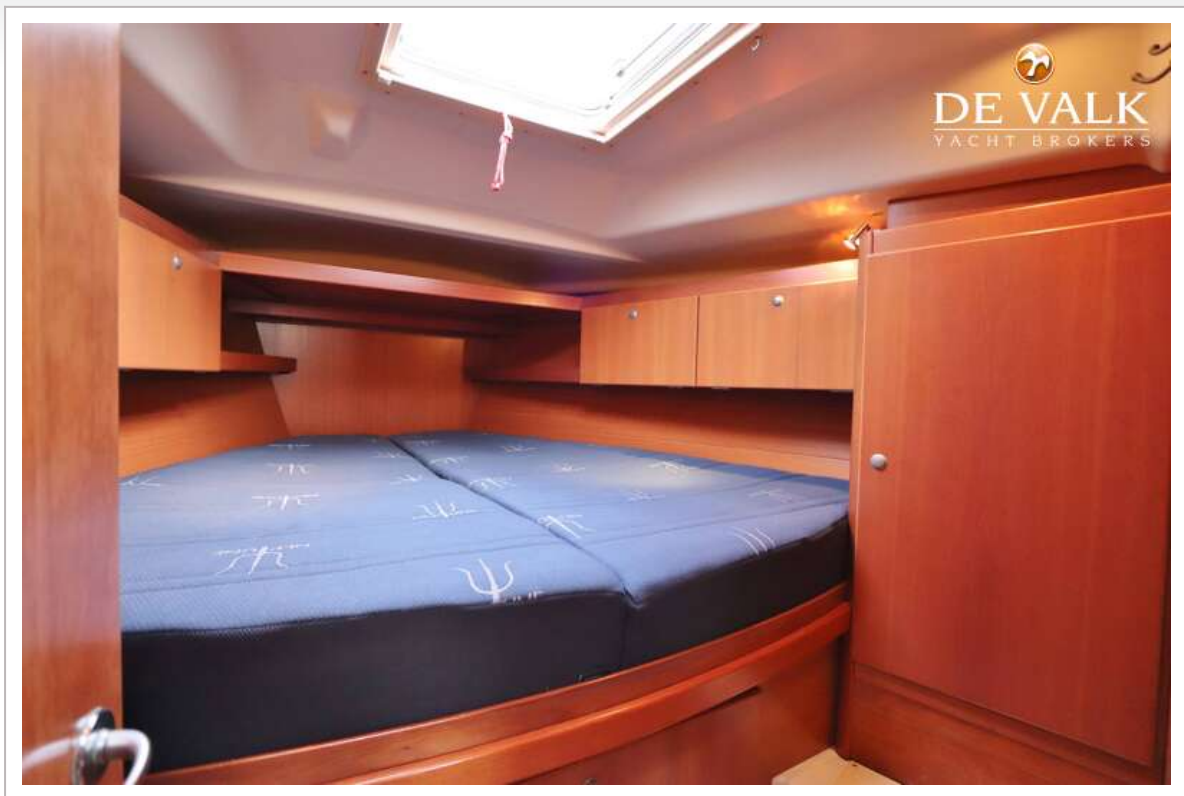


# DEHLER 41 CR





# DEHLER 41 CR



# DEHLER 41 CR





# DEHLER 41 CR



# DEHLER 41 CR



# DEHLER 41 CR

