



DE VALK
YACHT BROKERS



VALKKRUISER DEVOTION 19.00



DE VALK
YACHT BROKERS

VALKKRUISER DEVOTION 19.00

BROKER'S COMMENTS

"This Valkkruiser Devotion 19.00 has an enormous amount of living space and comfort. With her new Kabola heating and new airco's she is well suited to live aboard for extended periods. And with a minimum air draft of 3,40m she can also cruise the French canals! She is easy to handle and manoeuvre with twin Vetus Deutz diesel engines with electronic engine controls and a powerful bow thruster. She has lots of renewings like a new teak imitation deck and a paintjob of the hull and superstructure in 2019. Why not book a viewing? She might well be the yacht for your next adventure!"

Jochem Heijermans

SPECIFICATIONS

Dimensions	19,00 x 4,83 x 1,35 (m)	Builder	van der Valk B.V.
Built	2002	Cabins	3
Material	Steel	Berths	5
Engine(s)	2 x Vetus Deutz DT67 diesel	Hp/Kw	2 x 231 (hp), 170,02 (kw)
Asking price	EUR 499.000 (vat: paid)	Lying	not at sales office

CONTACT

Sales office	De Valk Belgium	Telephone	+3258680218
Address	-- 1401 PT Nieuwpoort Belgium	Fax	+31 355829019
		E-mail	belgium@devalk.nl

DISCLAIMER

These particulars are given in good faith as supplied but cannot be guaranteed and cannot be used for contracts.



GENERAL

Model	VALKKRUISER DEVOTION 19.00
Type	motor yacht
LOA (m)	19,00
LWL (m)	16,70
Beam (m)	4,83
Draft (m)	1,35
Air draft (m)	4,20
Air draft min (m)	3,40
Headroom (m)	2,07
Year built	2002
Builder	van der Valk B.V.
Country	The Netherlands
Designer	Gijs van der Valk
Displacement (t)	34,2
CE norm	C
Hull material	steel
Hull colour	white
Hull thickness (mm)	6
Hull shape	hard chine
Superstructure material	steel
Deck material	steel
Deck finish	synthetic teak (New 2019)
Superstructure deck finish	paint
Cockpit deck finish	synthetic teak (New 2019)
Window frame	aluminium
Window material	tempered glass
Deckhatch	yes
Mast can be lowered	hydraulic
Fuel tank (litre)	steel 1 x 3500
Level indicator (fuel tank)	yes



Freshwater tank (litre)	polyethylene 2 x 800 (New 2019)
Level indicator (freshwater)	yes
Blackwater tank (litre)	polyethylene 1 x 400 (New 2022)
Blackwater tank extraction	deck extraction + pump
Wheel steering	powersteer
More info on paintwork	Hull + Superstructure painted in 2019

ACCOMMODATION

Cabins	3
Berths	5
Interior	cherry
Floor	carpet
Headroom saloon (m)	2,07
Heating	Kabola Ecoline KB45 (new 2020)
Air-conditioning	reverse cycle airco 3 x (new 2020)
Aft Cabin	yes
Dinette	yes
Galley	yes
Countertop	corian
Sink	stainless steel
Cooker	electric Candy
Oven	Electrum
Fridge	1 x in galey + 1 x in cockpit
Freezer	yes
Hot water system	on central heating
Water pressure system	electrical
Owners cabin	French bed
Bed length (m)	2,00 x 1,50
Wardrobe	hanging/drawers/shelves
Bathroom	shared



Toilet	shared
Toilet system	electric
Wash basin	in the bathroom
Shower	shared
Guest cabin 1	double bed
Bed length (m)	2,00 x 1,50
Wardrobe	hanging and drawers
Bathroom	en suite
Toilet	en suite
Toilet system	electric
Wash basin	in the bathroom
Shower	en suite
Guest cabin 2	twin single
Wardrobe	hanging
Extra info	Saloon cushions + upholstery new 2019

MACHINERY

No of engines	2
Make	Vetus Deutz
Type	DT67
HP	231
kW	170.02
Fuel	diesel
Year installed	2002
Engine hours	2208
Engine cooling system	freshwater heat exchanger
Drive	shaft
Shaft seal	(New 2019)
Engine controls	electrical + extra controls on front deck
Gearbox	hydraulic
Bowthruster	hydraulic Maxpower serie 325 model 250



Thrust bearing	yes
Propeller type	fixed 2 x
Propeller blades	4
Propeller shaft material	stainless steel
Shaft lubrication	grease
Electric bilge pump	2 x
Electrical installation	24V/230V
Generator	silent separator Mastervolt 12 Kva
Start battery	2 x Mastervolt 225 ah (new 2020)
Service battery	4 x Mastervolt 225 ah (new 2020)
Battery monitor	Mastervolt
Battery charger	Mastervolt Mass 24/50 (new 2020)
Inverter	Mastervolt Dakar Sine 24/3000
Shorepower	with cable

NAVIGATION

VHF	2 x Standart Horizon
Autopilot	Simrad AP 28 + joystick control + remote control with kable
Rudder angle indicator	yes
GPS	Simrad AI 50
Radar/GPS/plotter	Simrad (new 2019)
Electronis chart(s)	yes
Camera	2 x
Navigation lights	LED (2019)
Searchlight	(New 2021)

EQUIPMENT

Fixed windscreen	yes
Cockpit cover	(New 2024)



Cockpit cushions	(New 2019)
Cockpit table	yes
Bathing platform	yes
Boarding ladder	stainless steel
Deck shower	yes
Anchor	Danforth
Anchor chain	yes
Windlass	electrical Lofrans
Capstan	On windlass
Davits	yes
Davits controls	manual
Sea railing	yes
Grab rail (superstructure)	stainless steel
Railing side opening gates	yes
Life raft	valise (or bag) Survey valid till 03-2022
Lifejackets	yes
Lifebuoy	yes
Wiper	3 x
Horn	electric
Fenders	yes
Mooring lines	yes
Satellite	(New 2019)
Radio-cd player	yes
Cockpit speakers	yes
Speakers in salon	yes
Fire extinguisher	(New 2020)
Extra info	Outside tables in cockpit and front deck new 2019



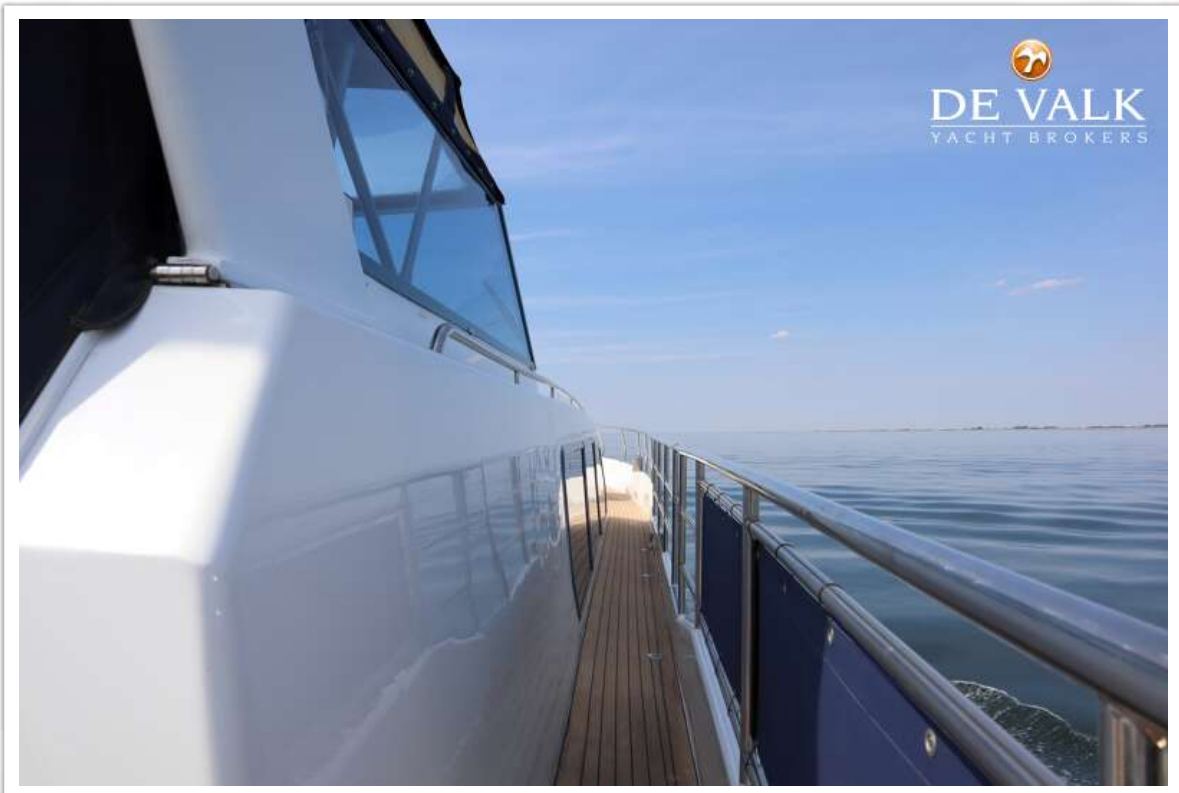
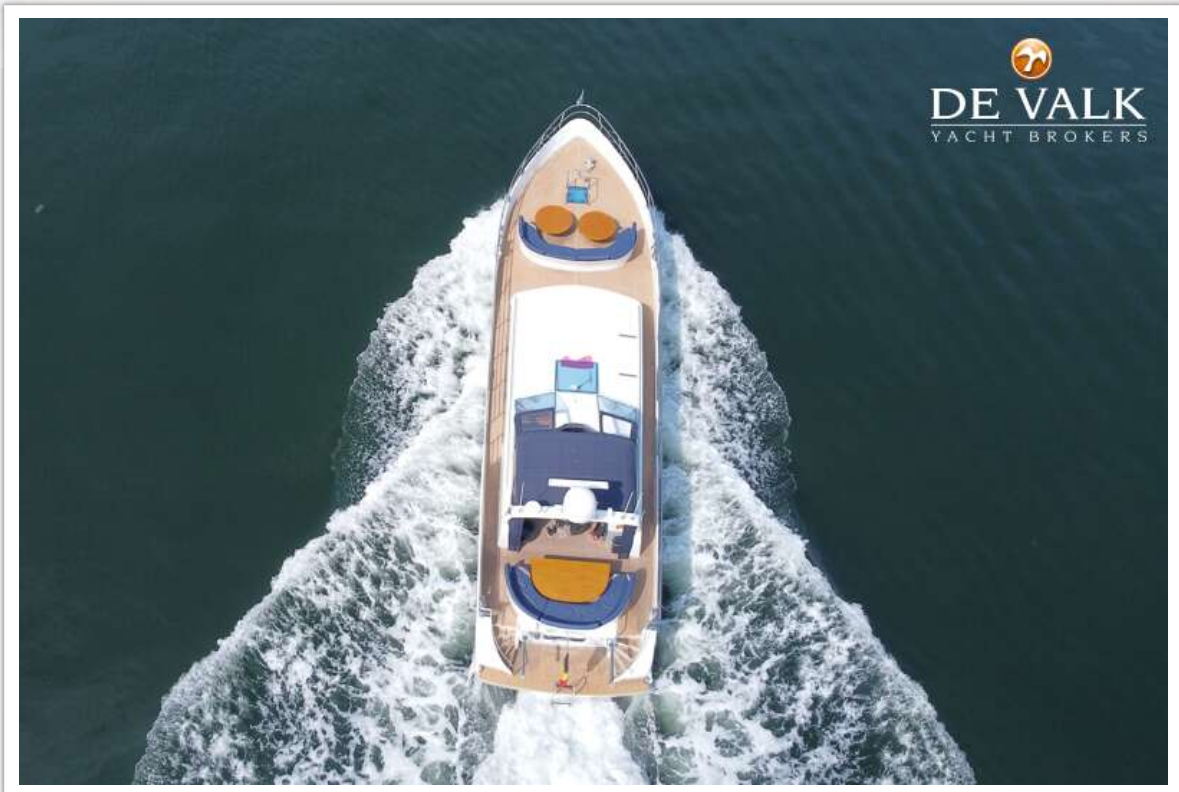
VALKKRUISER DEVOTION 19.00



VALKKRUISER DEVOTION 19.00



VALKKRUISER DEVOTION 19.00

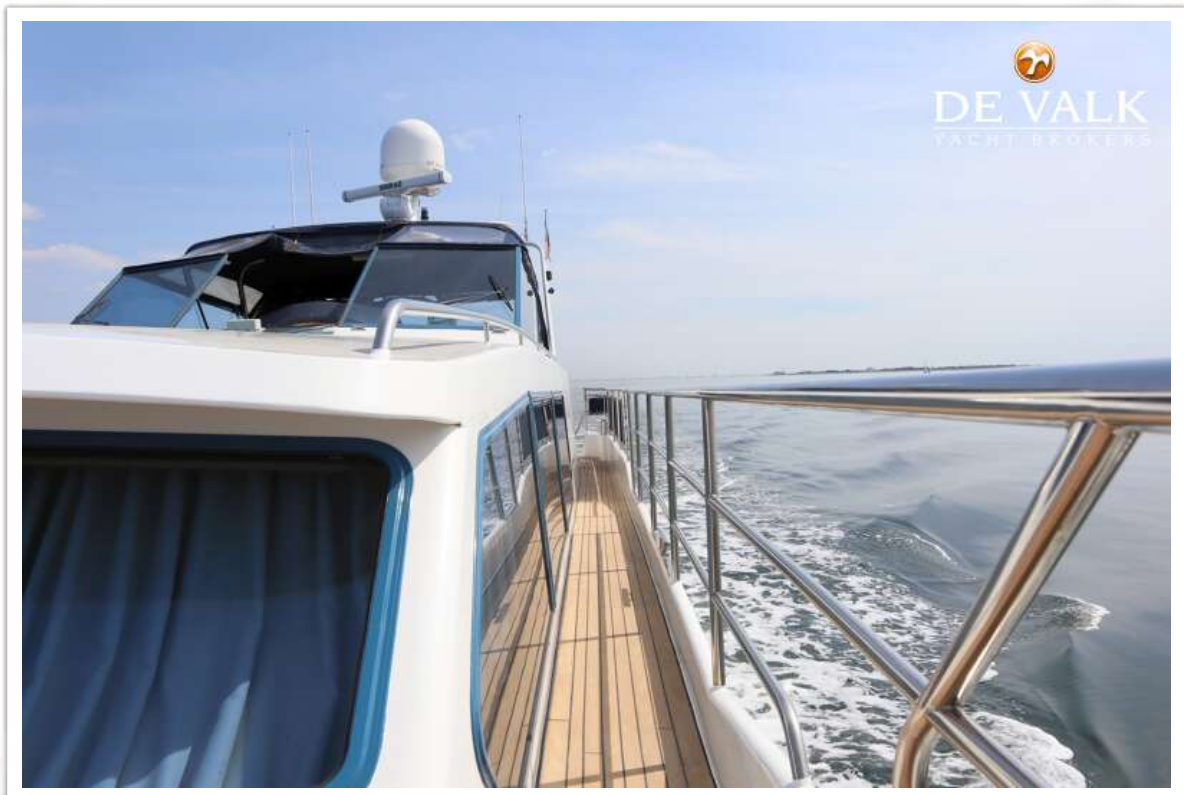
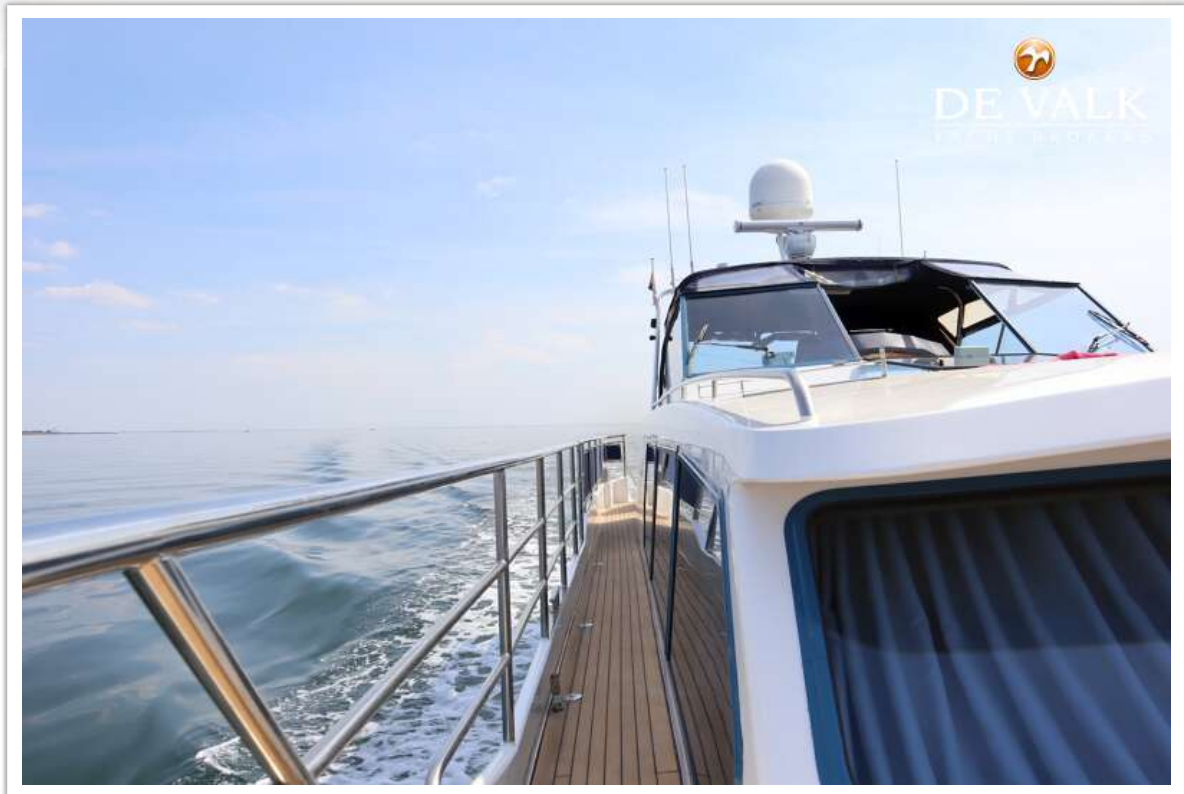


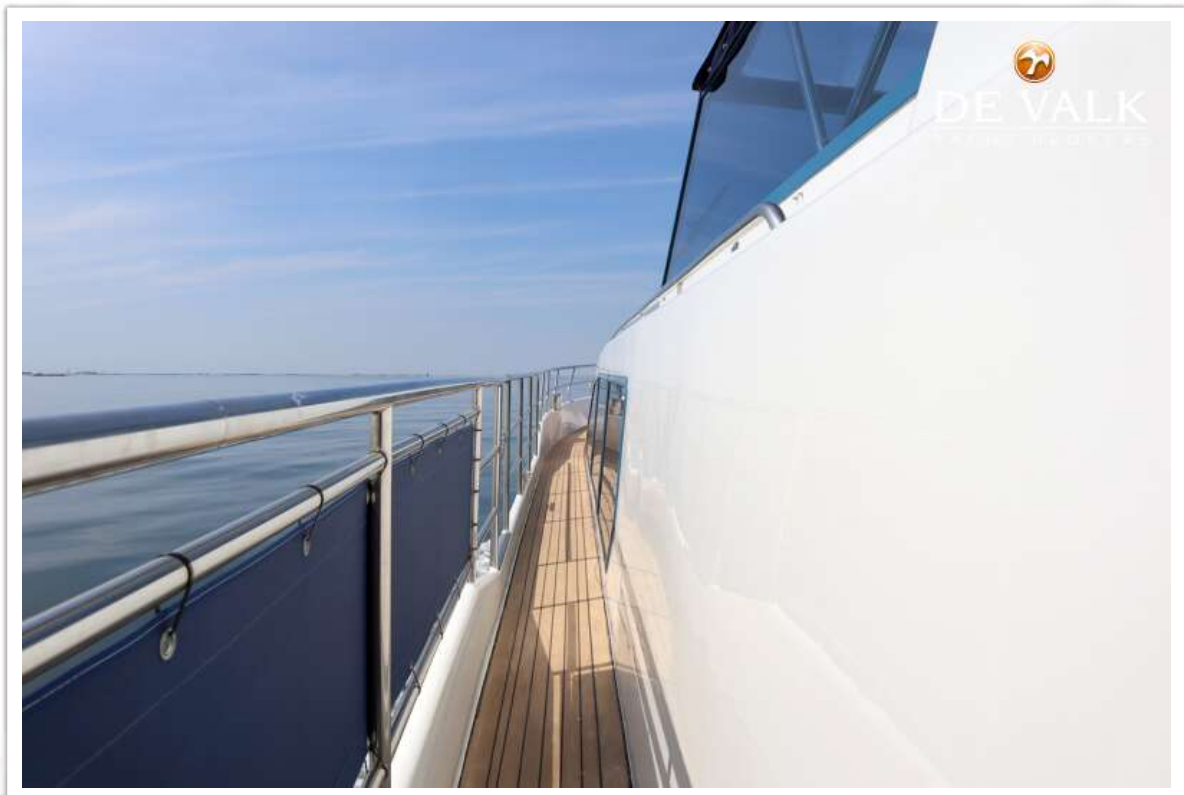
VALKKRUISER DEVOTION 19.00



VALKKRUISER DEVOTION 19.00







VALKKRUISER DEVOTION 19.00



VALKKRUISER DEVOTION 19.00



VALKKRUISER DEVOTION 19.00



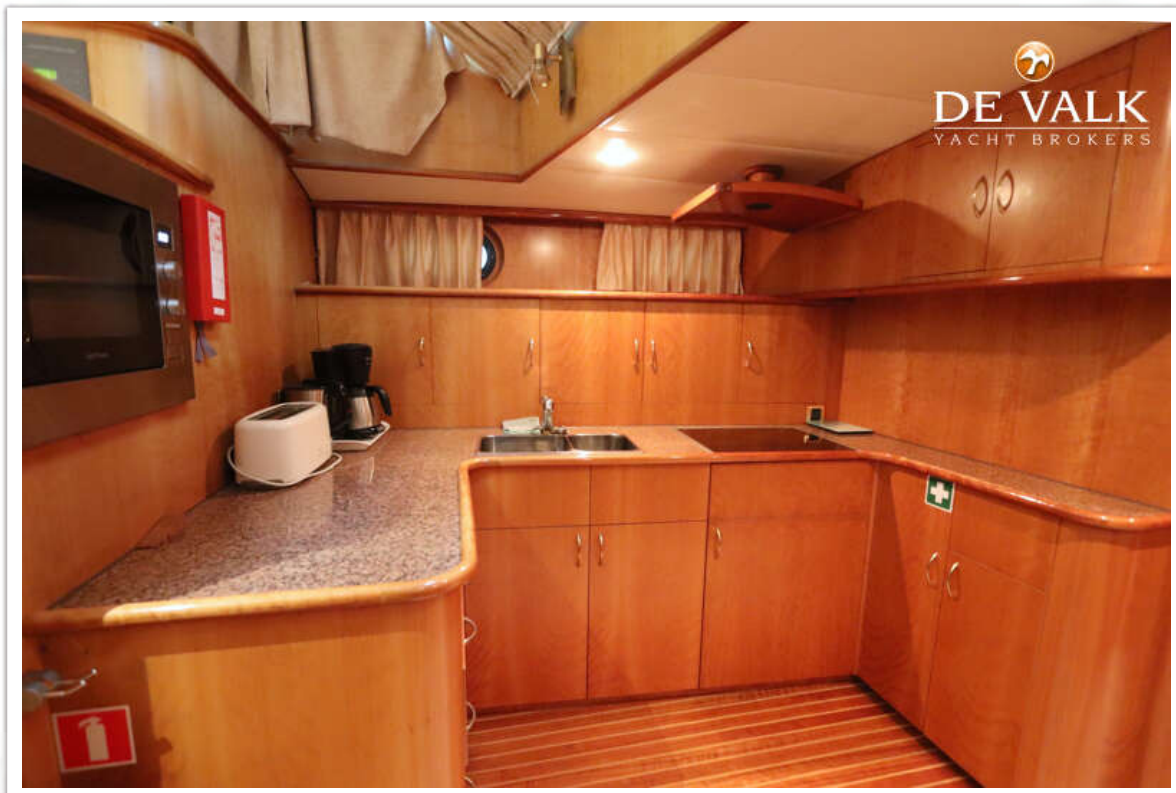
VALKKRUISER DEVOTION 19.00



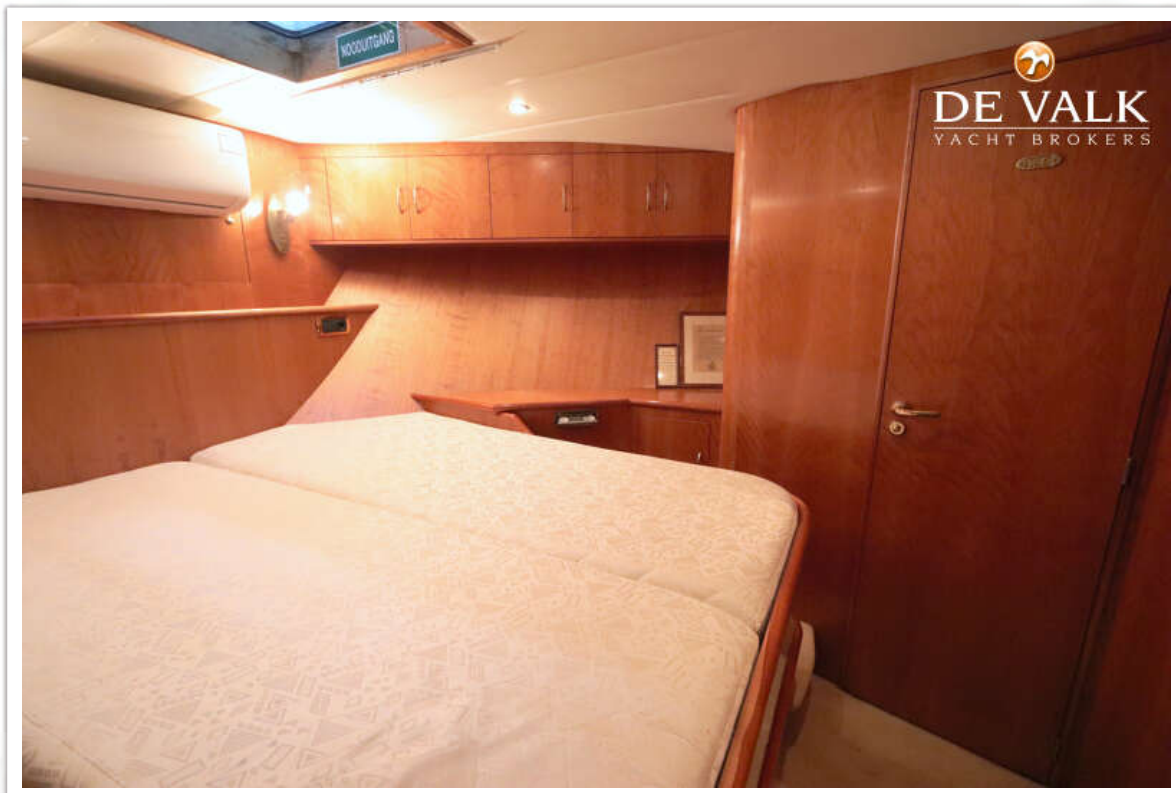
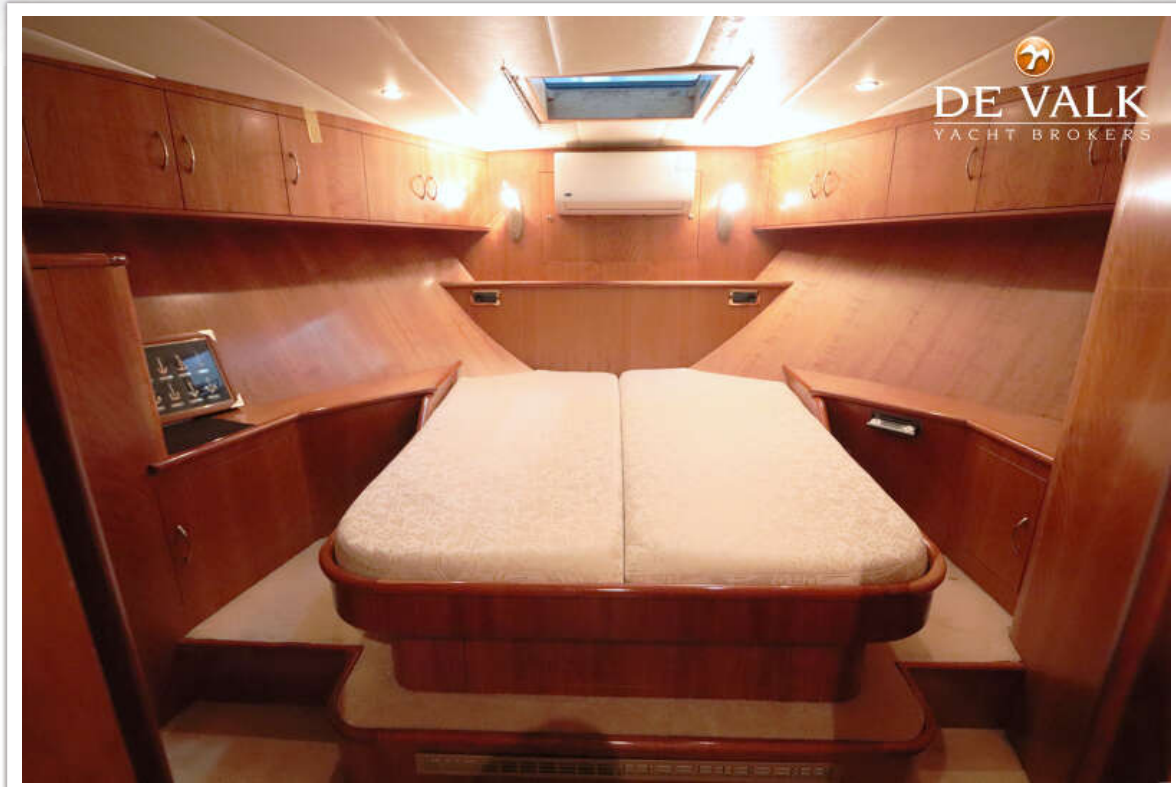
VALKKRUISER DEVOTION 19.00

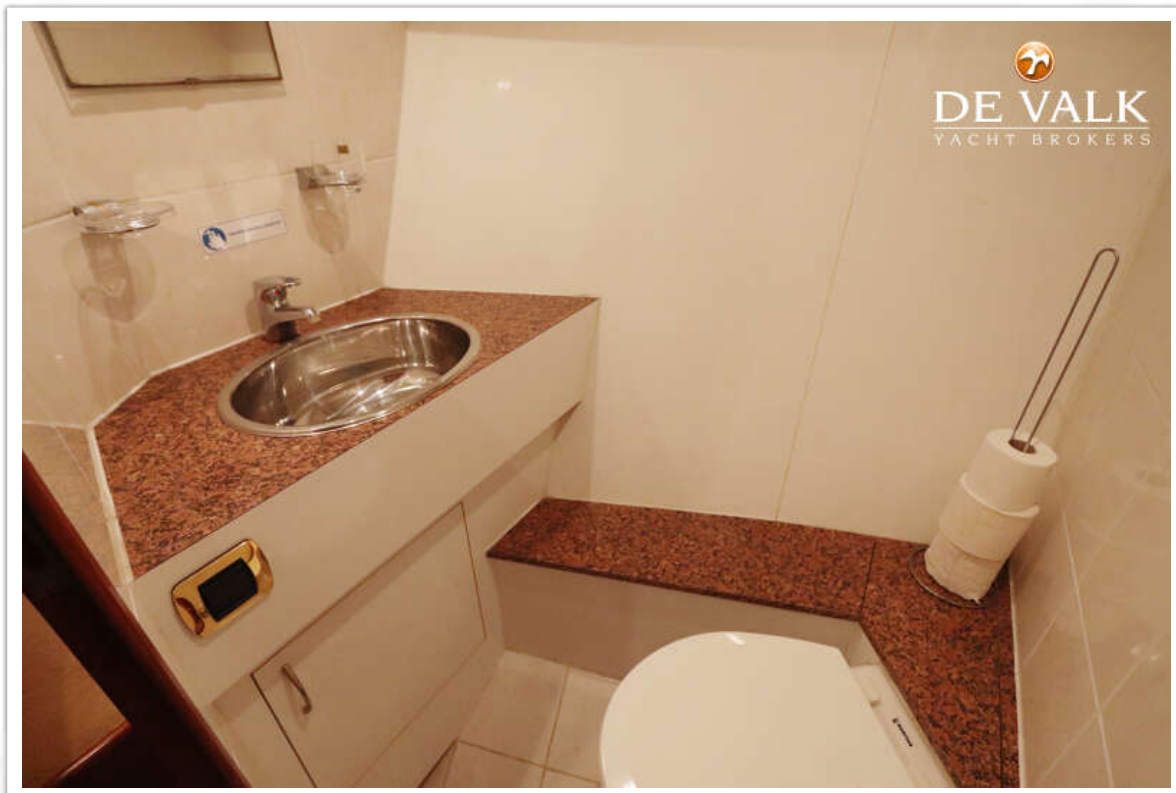
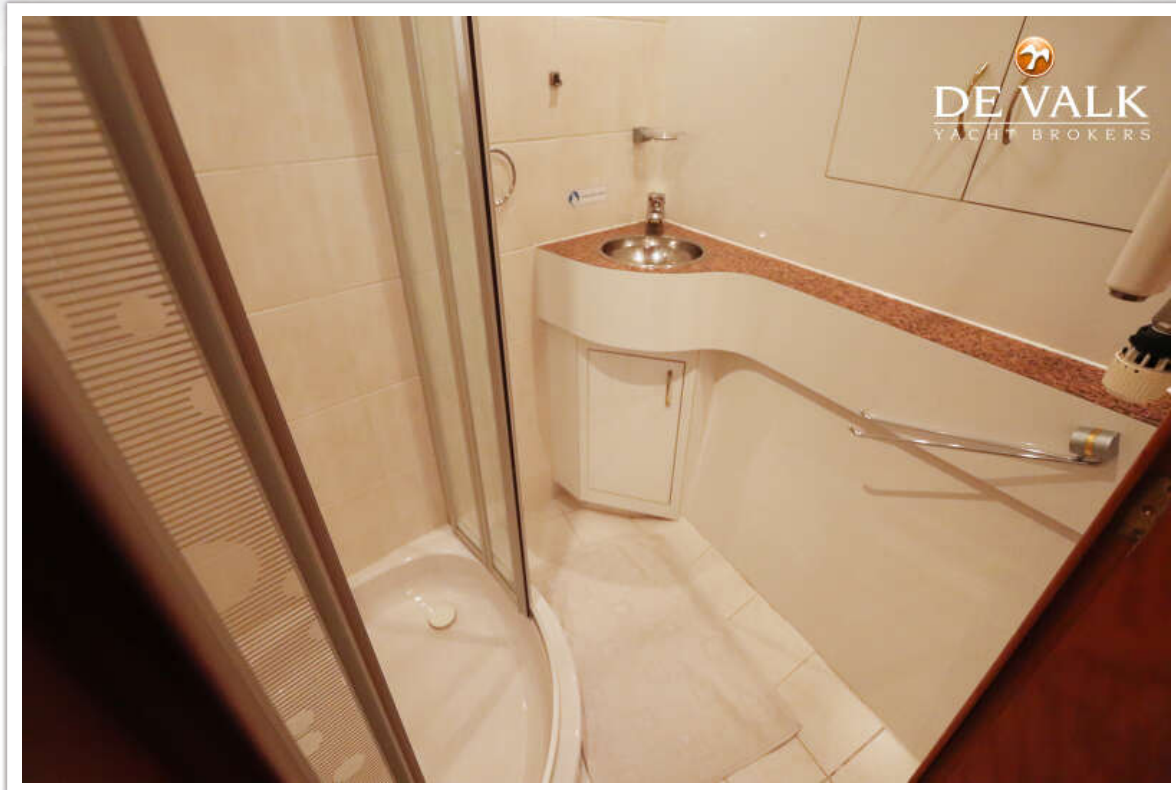


VALKKRUISER DEVOTION 19.00

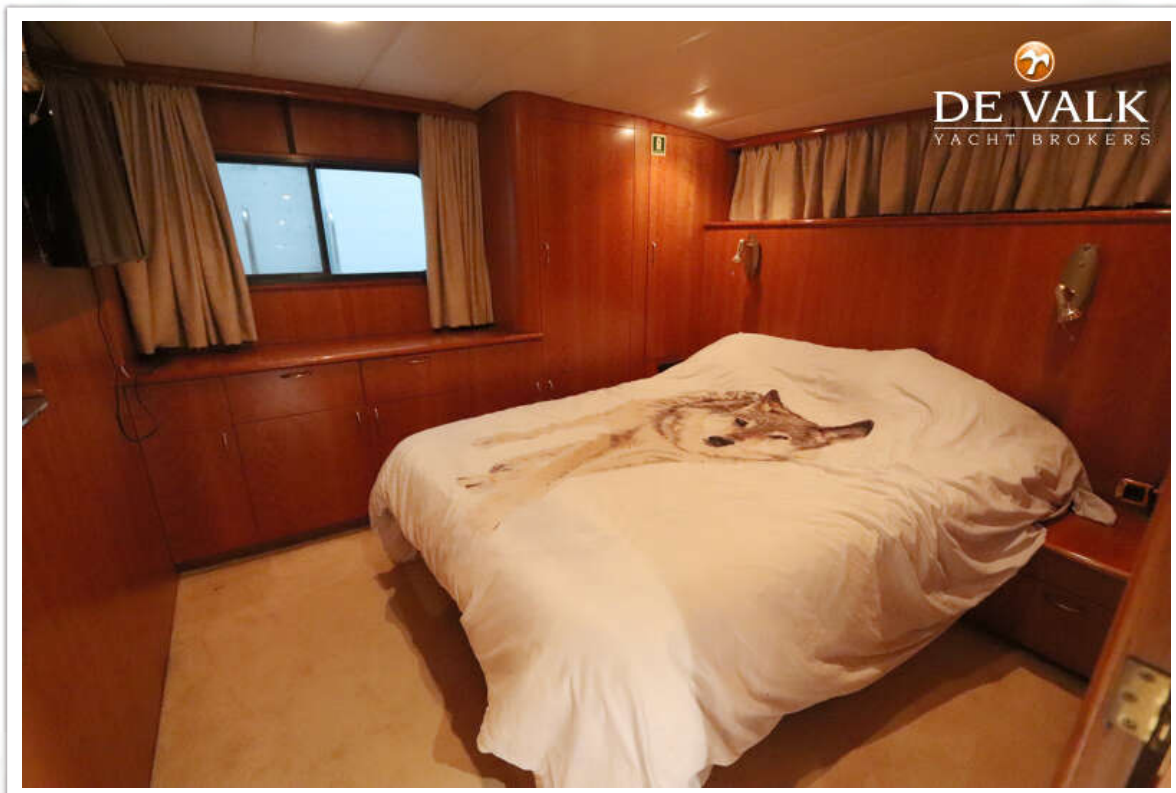


VALKKRUISER DEVOTION 19.00





VALKKRUISER DEVOTION 19.00



VALKKRUISER DEVOTION 19.00



