



LUXE MOTOR - KATWIJKER 22 M

# LUXE MOTOR - KATWIJKER 22 M

## BROKER'S COMMENTS

Well maintained Luxe Motor-Katwijker 22m called "Anita". This luxe Motor-Katwijker 22m has had a complete refit in 2005 with a new PZL Mielec diesel engine, the underwater hull is welded back to get a steel thickness of 8mm, in short, the ship is optically and technically completely addressed. Also because of her strong diesel engine and bow thruster it is very pleasant to sail and maneuver with the motor yacht. The "Anita" is an ideal motor yacht for permanent residence or as sailing vacation home.

*Jochem Heijermans*

## SPECIFICATIONS

<b>Dimensions</b>	22.00 x 3.75 x 1.38 (m)	<b>Builder</b>	
<b>Built</b>	1911	<b>Cabins</b>	1
<b>Material</b>	Steel	<b>Berths</b>	1
<b>Engine(s)</b>	1 x PZL Mielec SW 680-85 diesel	<b>Hp/Kw</b>	205.00 (hp), 151.00 (kw)
<b>Asking price</b>	sold (VAT )	<b>Lying</b>	at sales office

## CONTACT

<b>Sales office</b>	De Valk Belgium	<b>Telephone</b>	+32 586 80 218
<b>Address</b>		<b>E-mail</b>	belgium@devalk.nl
	1401 PT Nieuwpoort		
	BE		

## DISCLAIMER

These particulars are given in good faith as supplied but cannot be guaranteed.



# LUXE MOTOR - KATWIJKER 22 M

## GENERAL

Model	LUXE MOTOR - KATWIJKER 22 M
Type	motor yacht
LOA (m)	22,00
Beam (m)	3,75
Draft (m)	1,38
Air draft (m)	3,20
Headroom (m)	2,00
Year built	1911
Displacement (t)	44
Hull material	steel
Hull colour	white
Hull thickness (mm)	8
Hull shape	round-bilged Gejoggeld
Superstructure material	steel
Superstructure (mm)	3
Rubbing strake	steel
Deck material	steel
Deck finish	paint
Superstructure deck finish	paint
Cockpit deck finish	paint
Antifouling (year)	2021
Window frame	aluminium
Window material	tempered glass
Portholes	copper
Insulation	foam plates
Fuel tank (litre)	steel 1500
Fuel tank 2 (litre)	steel 1500
Level indicator (fuel tank)	yes
Fuel daytank (litre)	steel 500
Level indicator (daytank)	yes



Freshwater tank (litre)	stainless steel 3000
Level indicator (freshwater)	yes
Blackwater tank (litre)	steel 750
Blackwater tank extraction	deck extraction + pump
Wheel steering	electric + chain
Inside helm position	yes
Emergency tiller	Electric
More info on hull	2015 underwater ship refitted
More info on paintwork	2020

## ACCOMMODATION

Cabins	1
Berths	1
Floor	wood
Pilot house	yes
Saloon	yes
Headroom saloon (m)	2
Heating	central heating Kabola Compact 7CV (2021)
Galley	yes
Countertop	wood
Sink	stainless steel
Cooker	induction
Oven	yes
Extractor	yes
Microwave/oven combi	yes
Fridge	2x
Freezer	yes
Hot water system	220V 80l
Water pressure system	electrical
Owners cabin	French bed
Bed length (m)	2.00 x 1.40



Wardrobe	hanging/drawers/shelves
Bathroom	shared
Toilet	shared
Toilet system	electric
Wash basin	in the bathroom
Shower	shared

## MACHINERY

No of engines	1
Make	PZL Mielec
Type	SW 680-85
HP	205
kW	151
Fuel	diesel
Year installed	2005
Maximum speed (kn)	8
Cruising speed (kn)	6
Consumption (l/hr)	6
Engine hours	450
Engine cooling system	closed keelcooling
Drive	shaft
Engine controls	bowden cable
Gearbox	hydraulic
Bowthruster	electric 20pk
Exhaust	dry
Thrust bearing	yes
Propeller type	fixed
Propeller blades	4
Propeller shaft material	stainless steel
Shaft lubrication	grease
Manual bilge pump	yes



# LUXE MOTOR - KATWIJKER 22 M

Electric bilge pump	yes
Bilge alarm	yes
Electrical installation	24V/220V
Generator	Lister 15Kva (2015)
Running hours generator	460
Batteries	yes
Start battery	2x Varta 12V/230Ah (2019)
Service battery	2x Varta 12V/230Ah (2019)
Generator battery	12V/62 Ah (2021)
Bowthruster battery	2x Varta 12V/230Ah (2019)
Battery monitor	yes
Battery charger	Victron Skylla 24V/80Ah (2015) boeg 2018)
Inverter	Victron 24V/2000W
Solar panel	Victron (2019)
Shorepower	with cable
Extra info	2x spudpoles 2m50 (2005) 1x needs to be serviced

## NAVIGATION

Compass	yes
Electric compass	Advanseal C56
VHF	Lowrance LFR880
Rudder angle indicator	Epropm Electronica Terneuzen
Plotter/GPS	Advanseal C56
Camera	Needs to be installed
Navigation lights	yes
Searchlight	yes

## EQUIPMENT

Fixed windscreen	yes
Cockpit cushions	yes
Cockpit table	yes



# LUXE MOTOR - KATWIJKER 22 M

Cockpit chairs	yes
Anchor	2x 110kg
Windlass	electrical 2x
Deck wash	2020
Sea railing	steel
Grab rail (superstructure)	steel
Railing side opening gates	2x
Pushpit	yes
Pulpit	yes
Lifejackets	2x
Horn	
Fenders	yes
Mooring lines	yes
Spare parts	yes
Radio	yes
Fire extinguisher	2x
Latest extinguisher survey	2022





# LUXE MOTOR - KATWIJKER 22 M

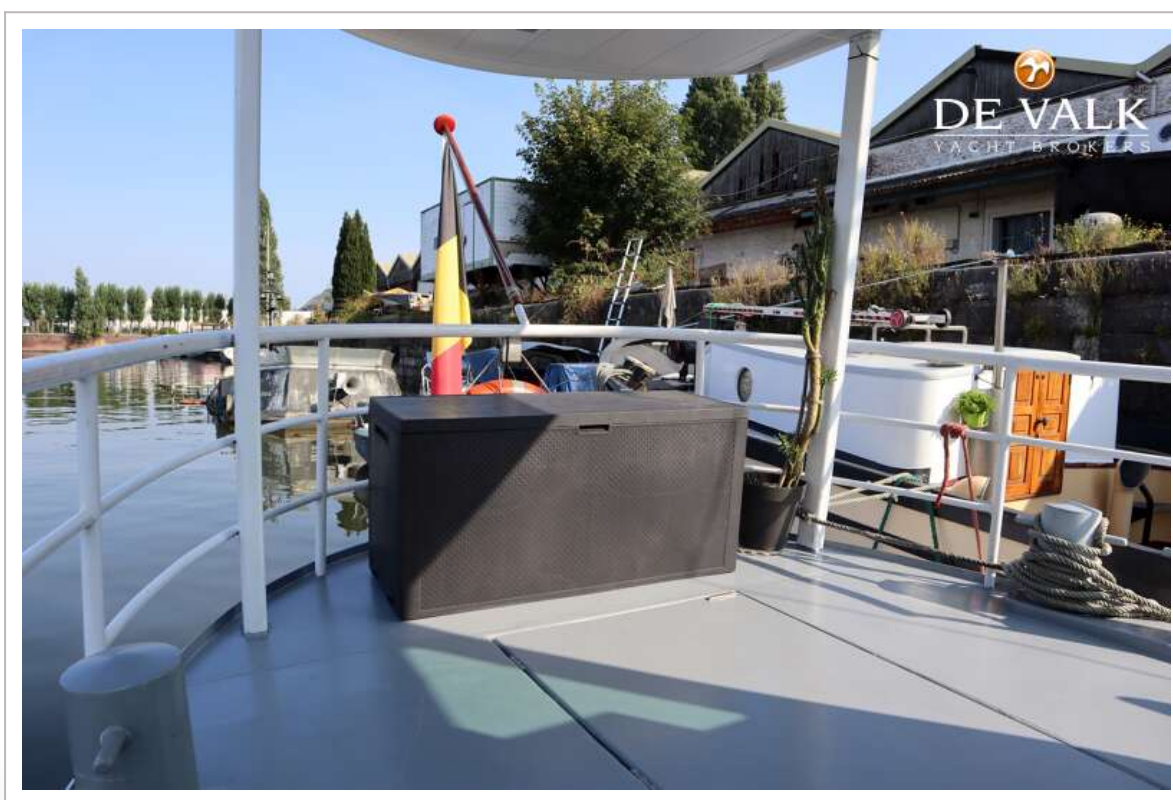
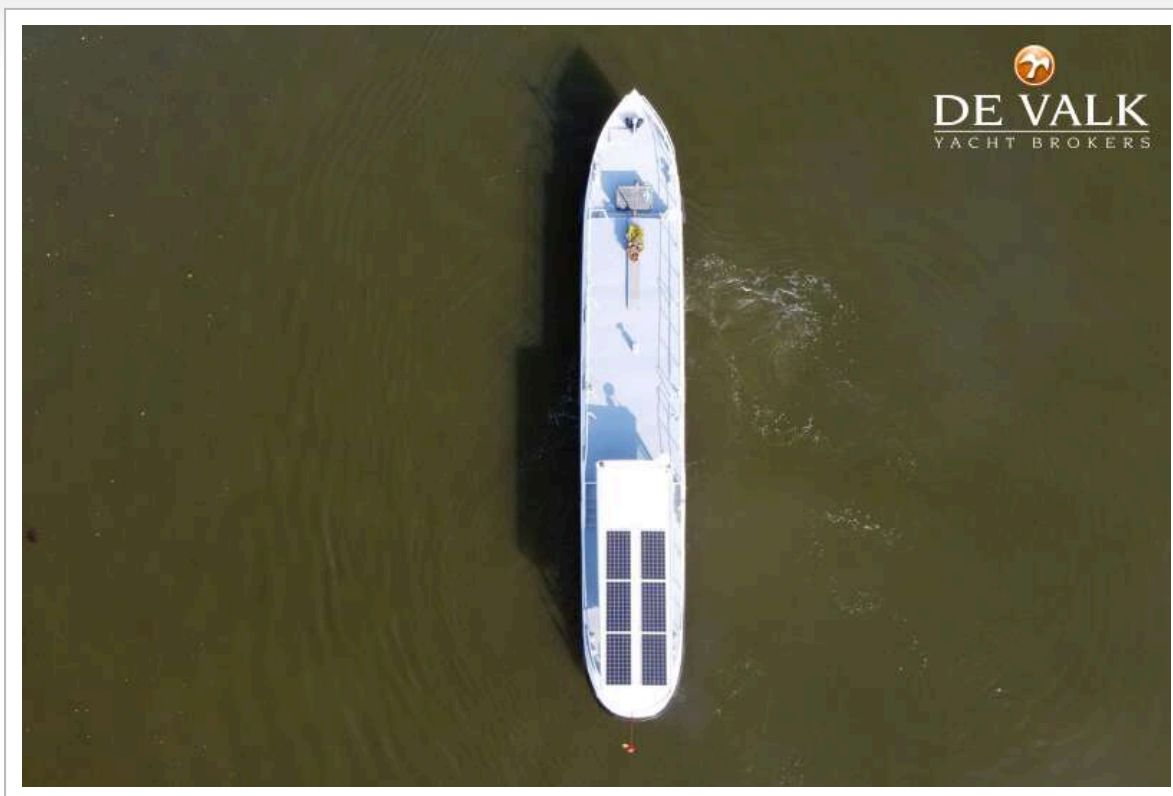




# LUXE MOTOR - KATWIJKER 22 M



# LUXE MOTOR - KATWIJKER 22 M





## LUXE MOTOR - KATWIJKER 22 M

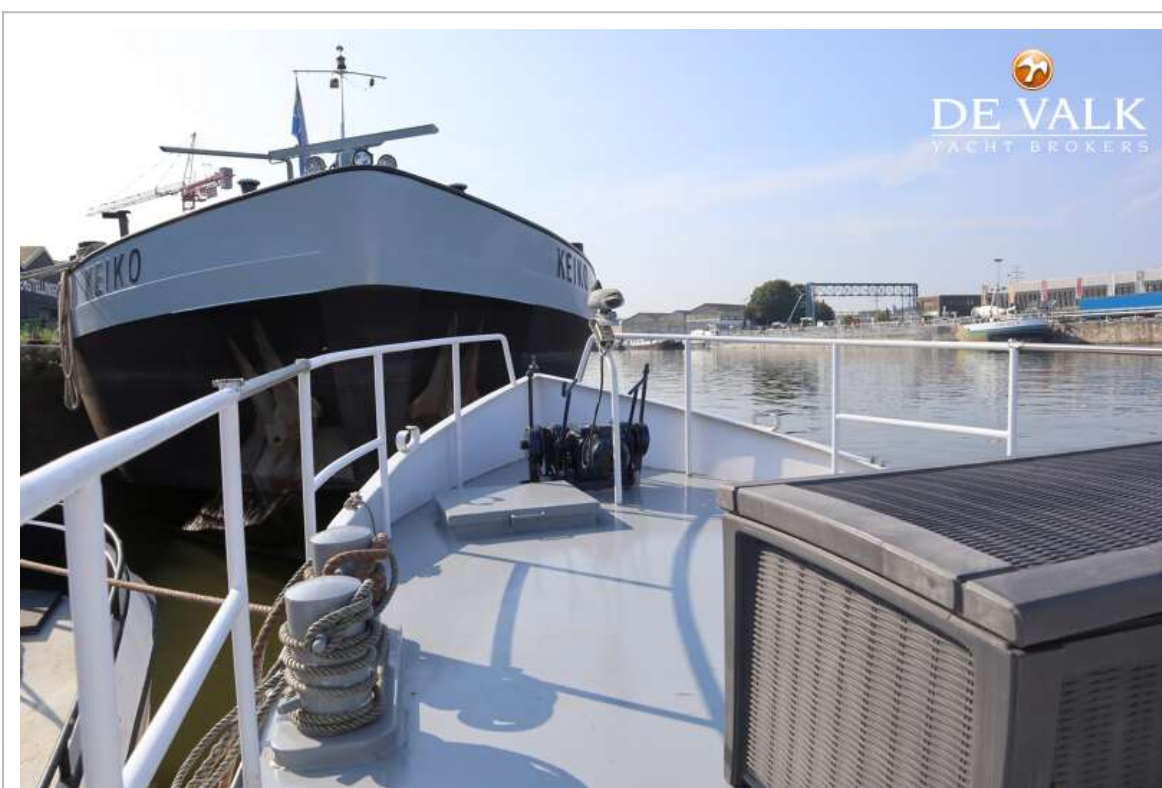


## LUXE MOTOR - KATWIJKER 22 M

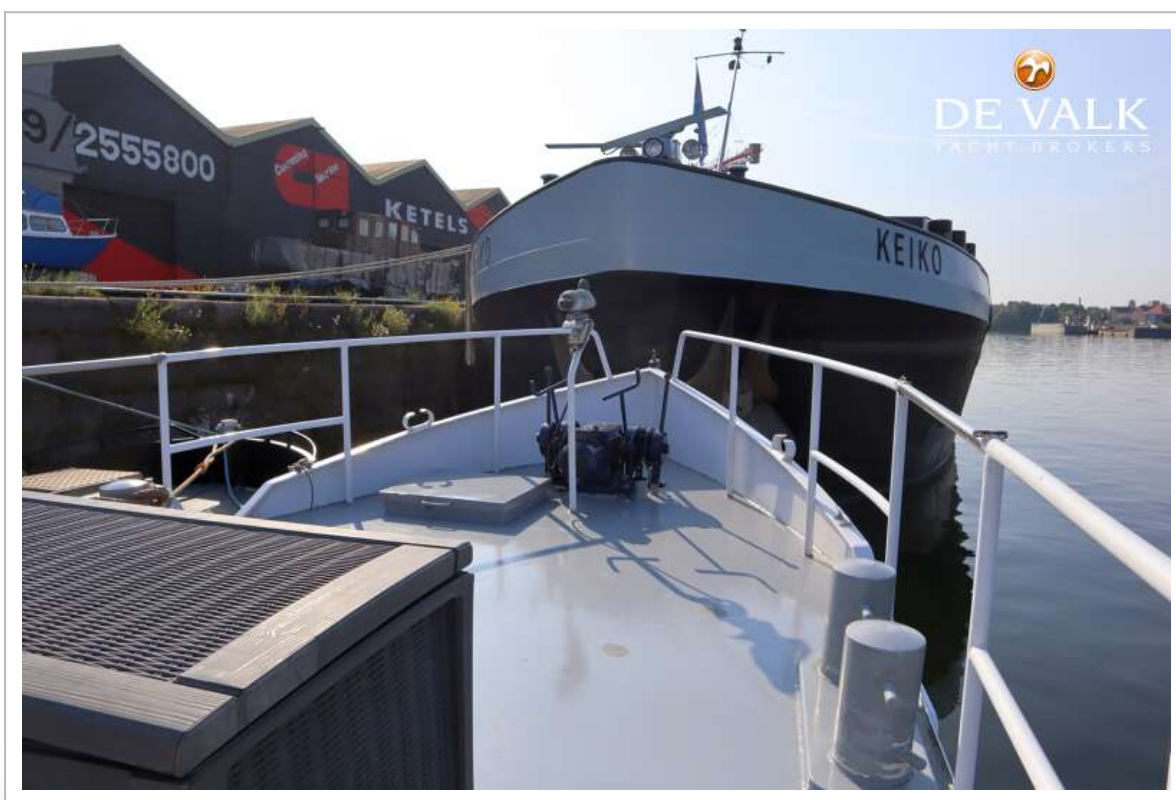
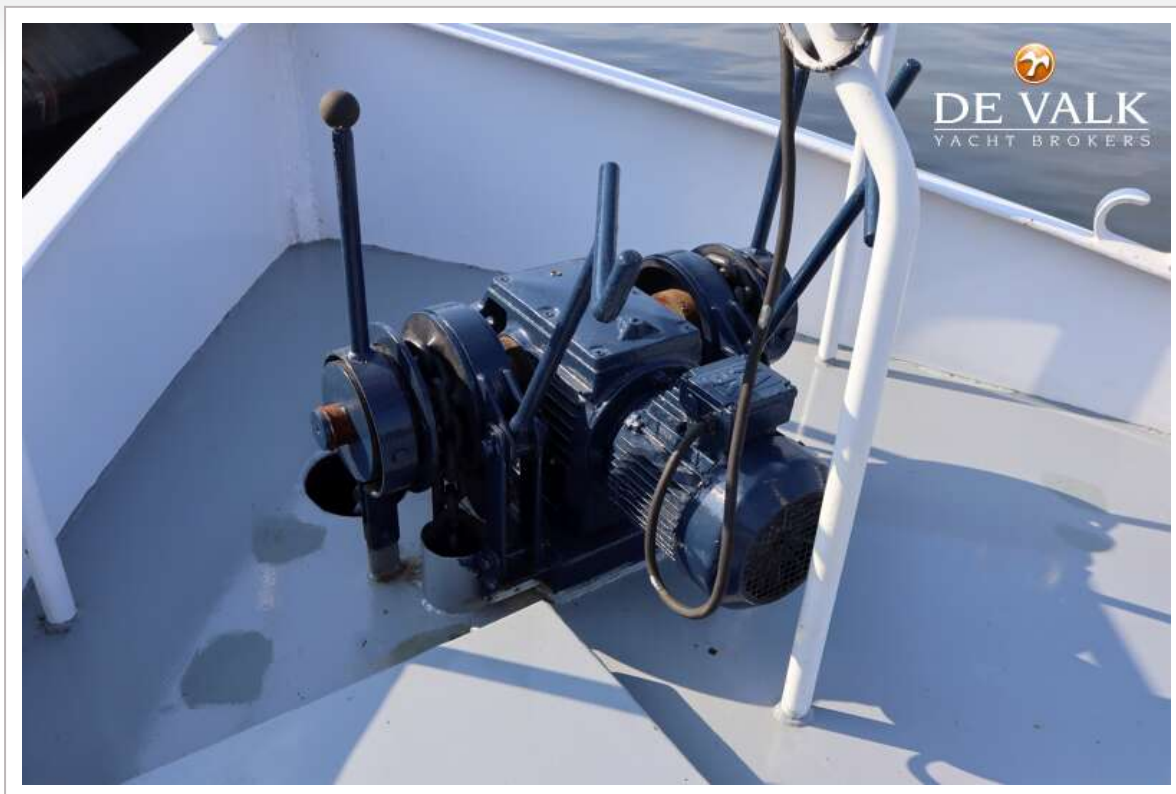




# LUXE MOTOR - KATWIJKER 22 M



## LUXE MOTOR - KATWIJKER 22 M





## LUXE MOTOR - KATWIJKER 22 M

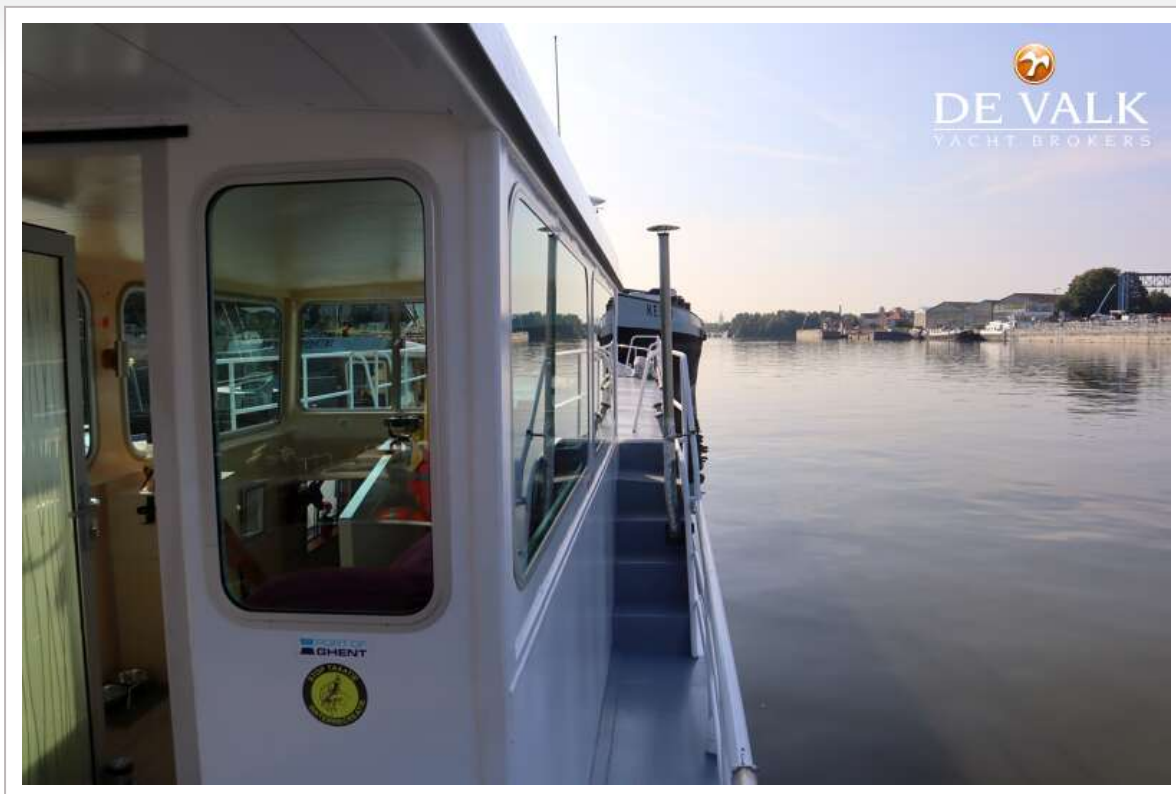




## LUXE MOTOR - KATWIJKER 22 M



## LUXE MOTOR - KATWIJKER 22 M

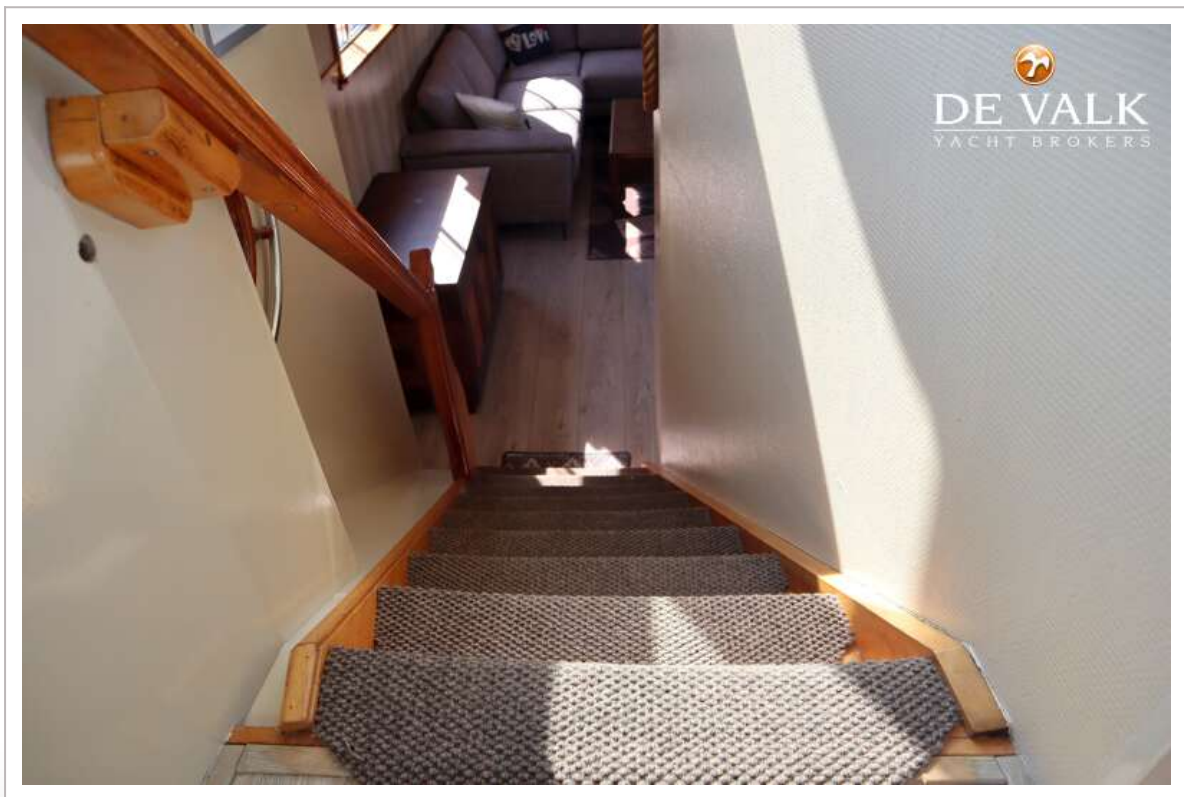
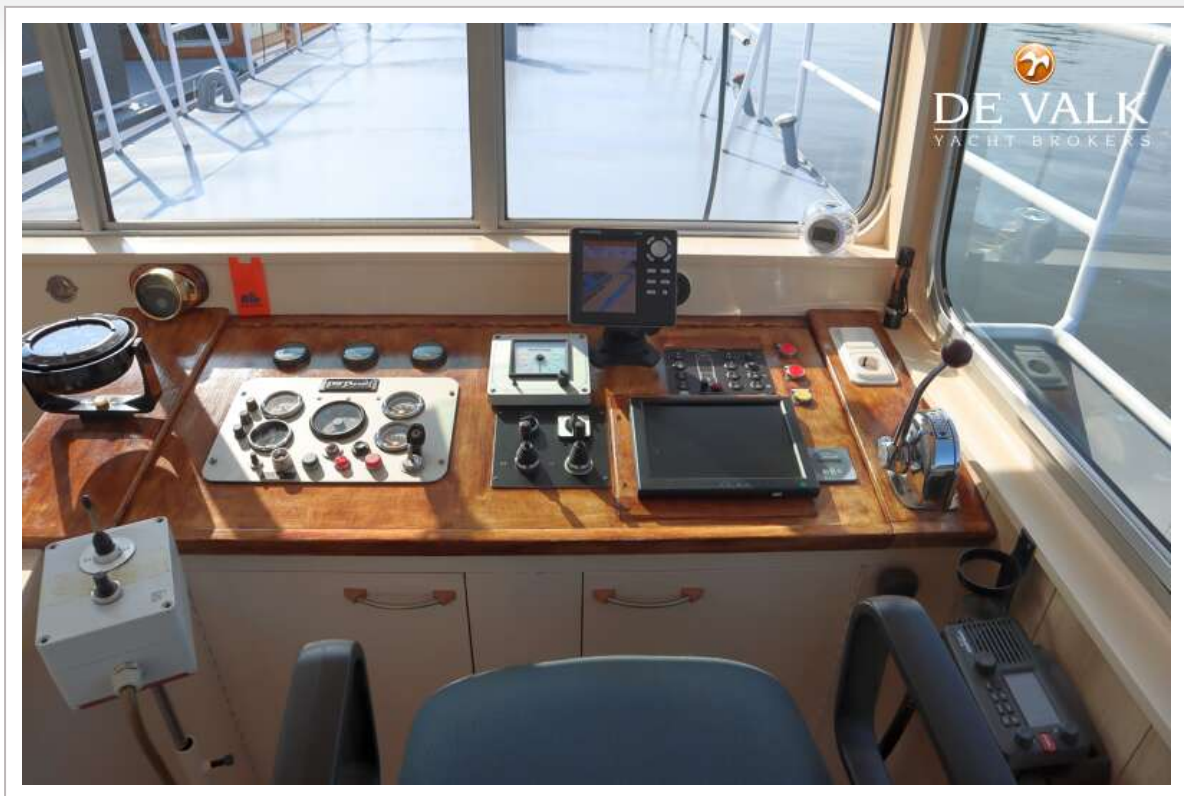


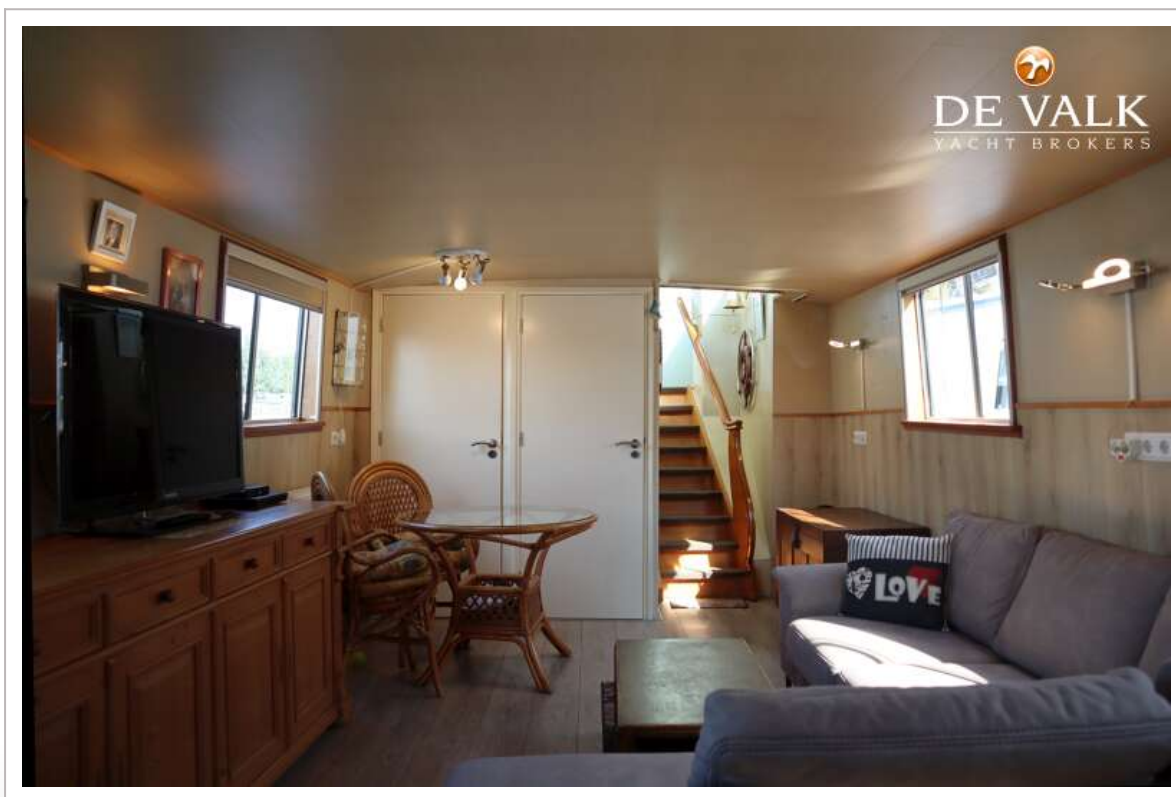
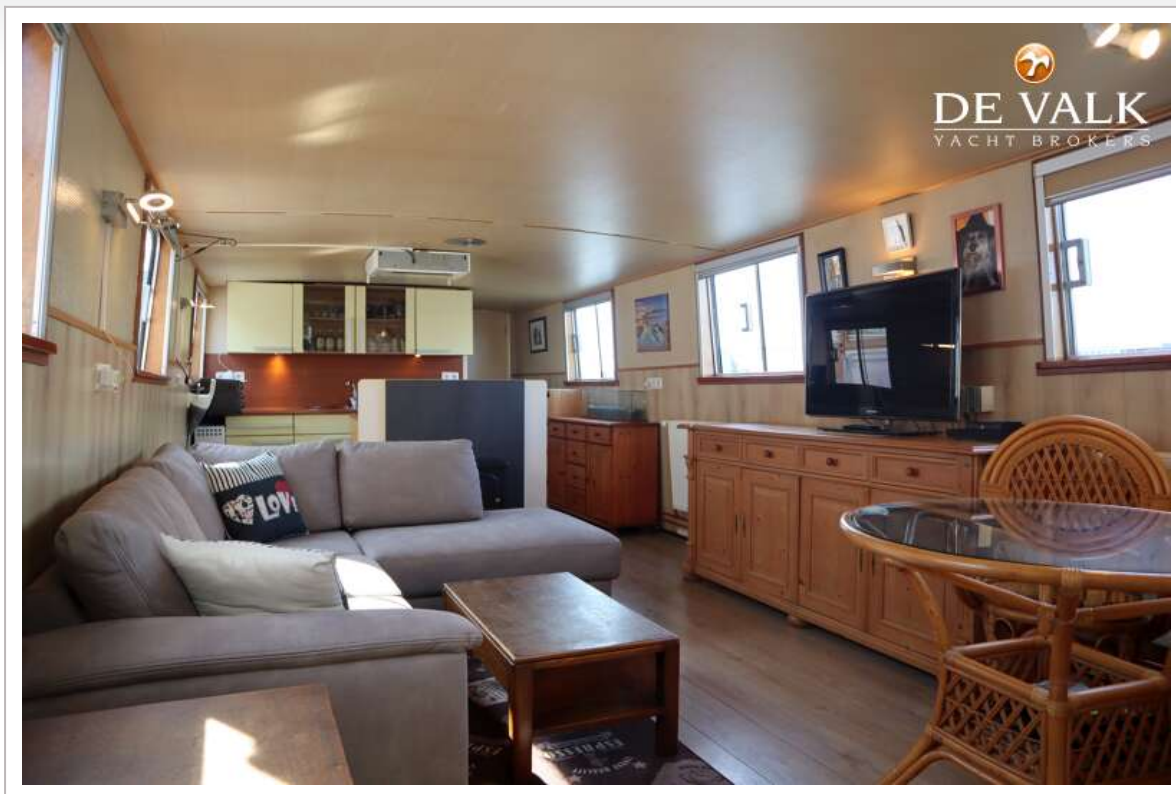
## LUXE MOTOR - KATWIJKER 22 M





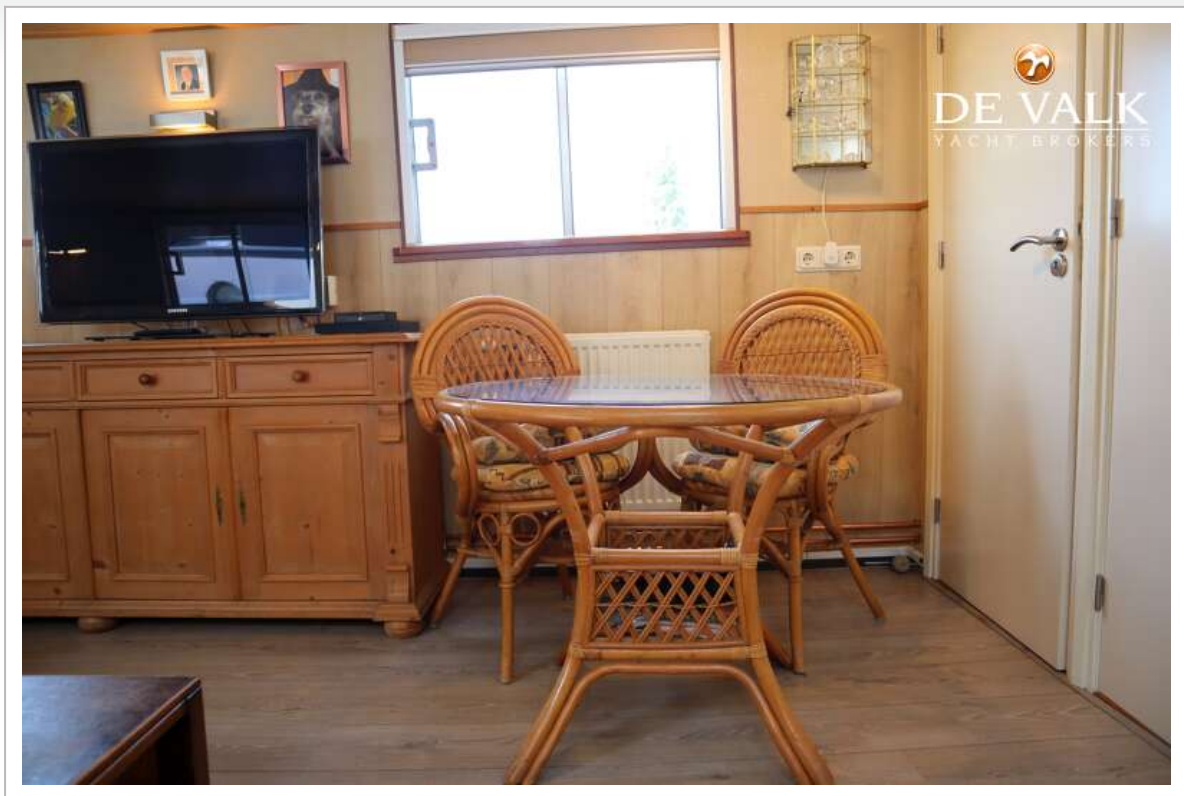
## LUXE MOTOR - KATWIJKER 22 M

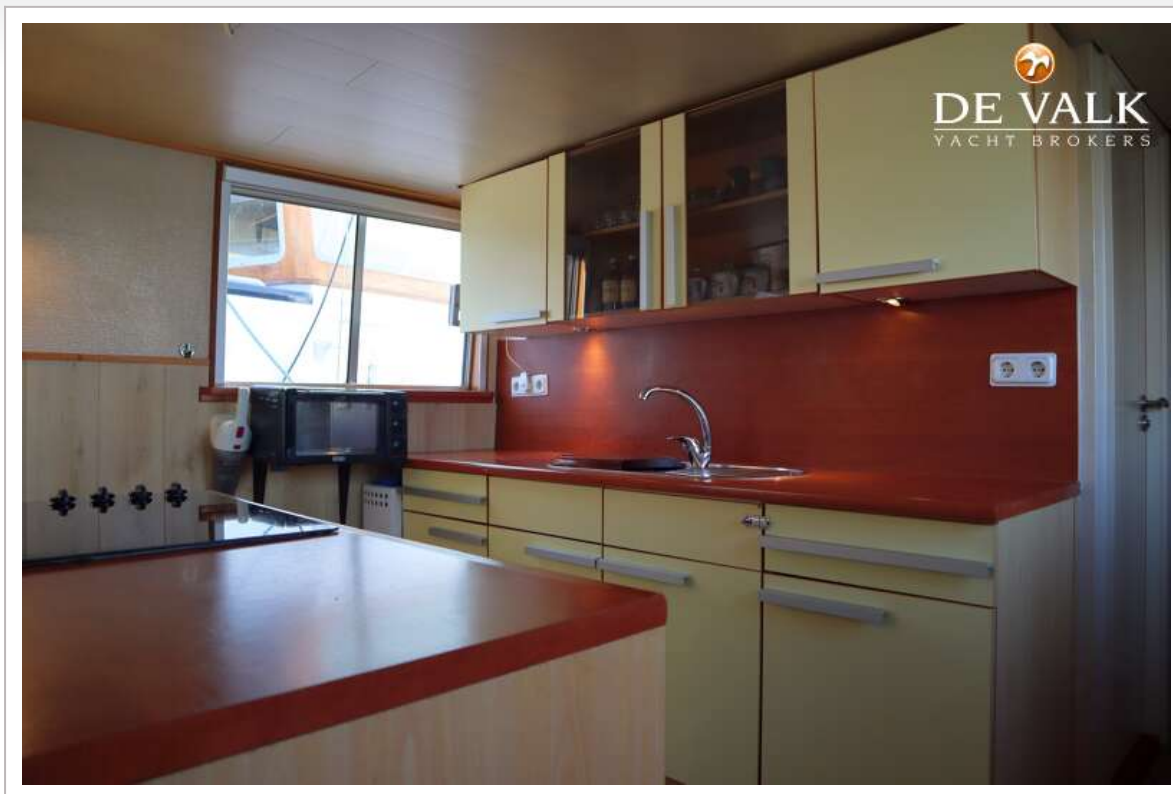






## LUXE MOTOR - KATWIJKER 22 M

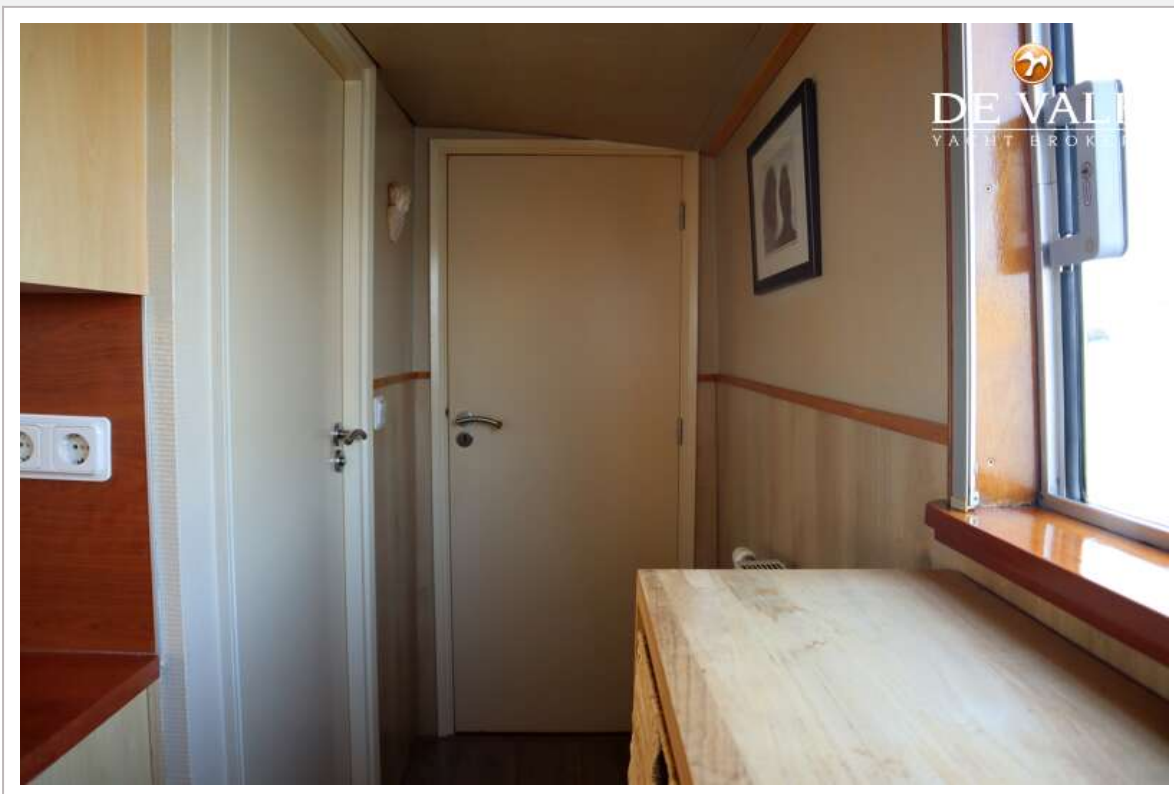




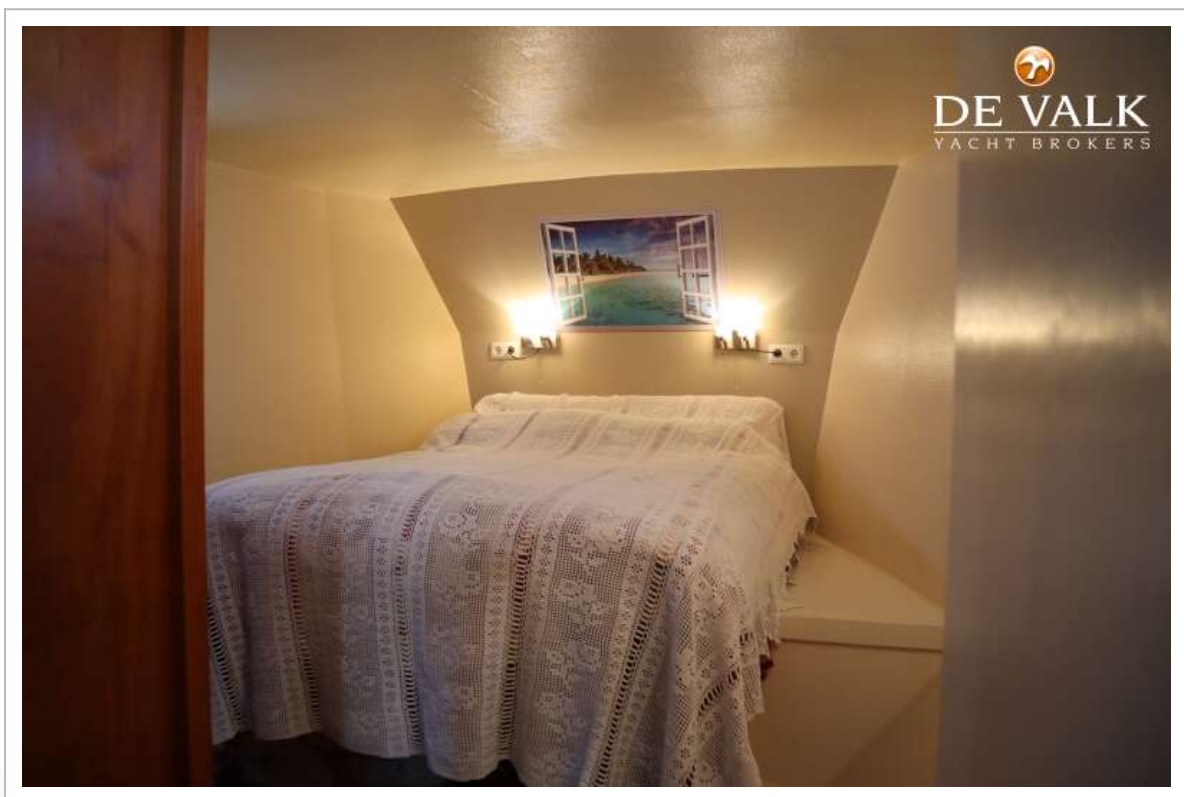


## LUXE MOTOR - KATWIJKER 22 M



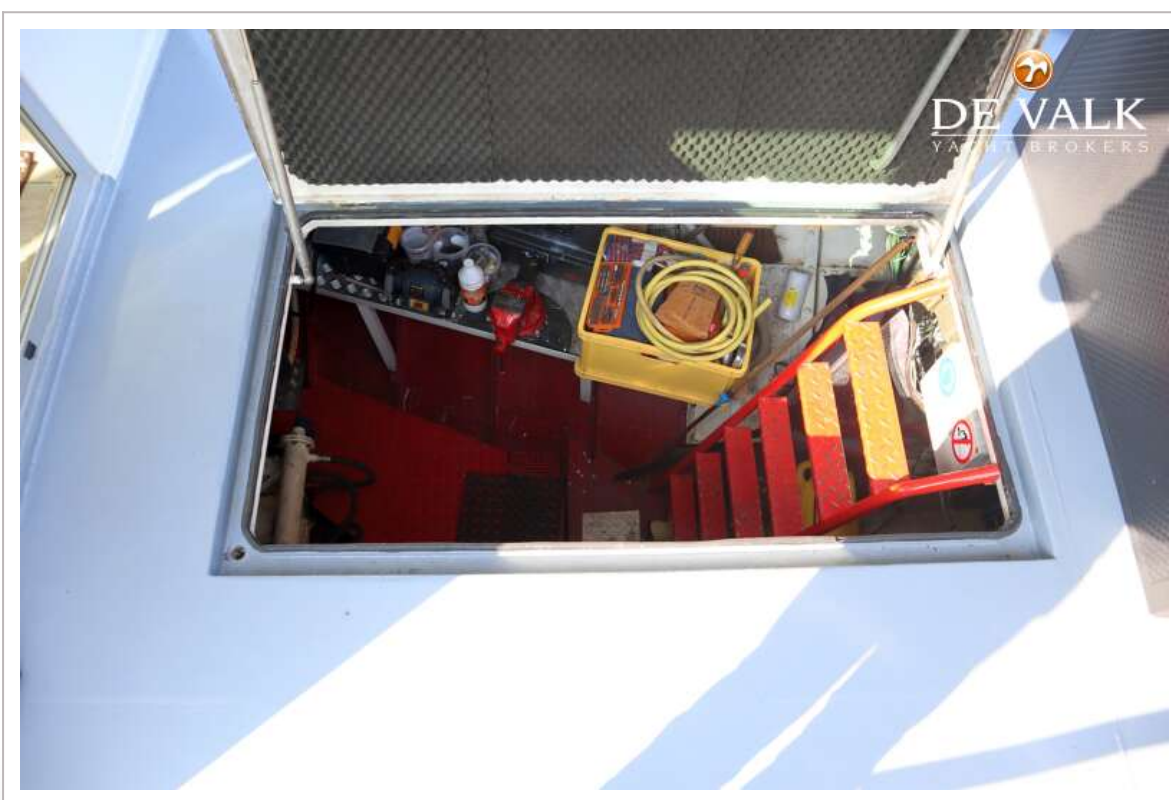
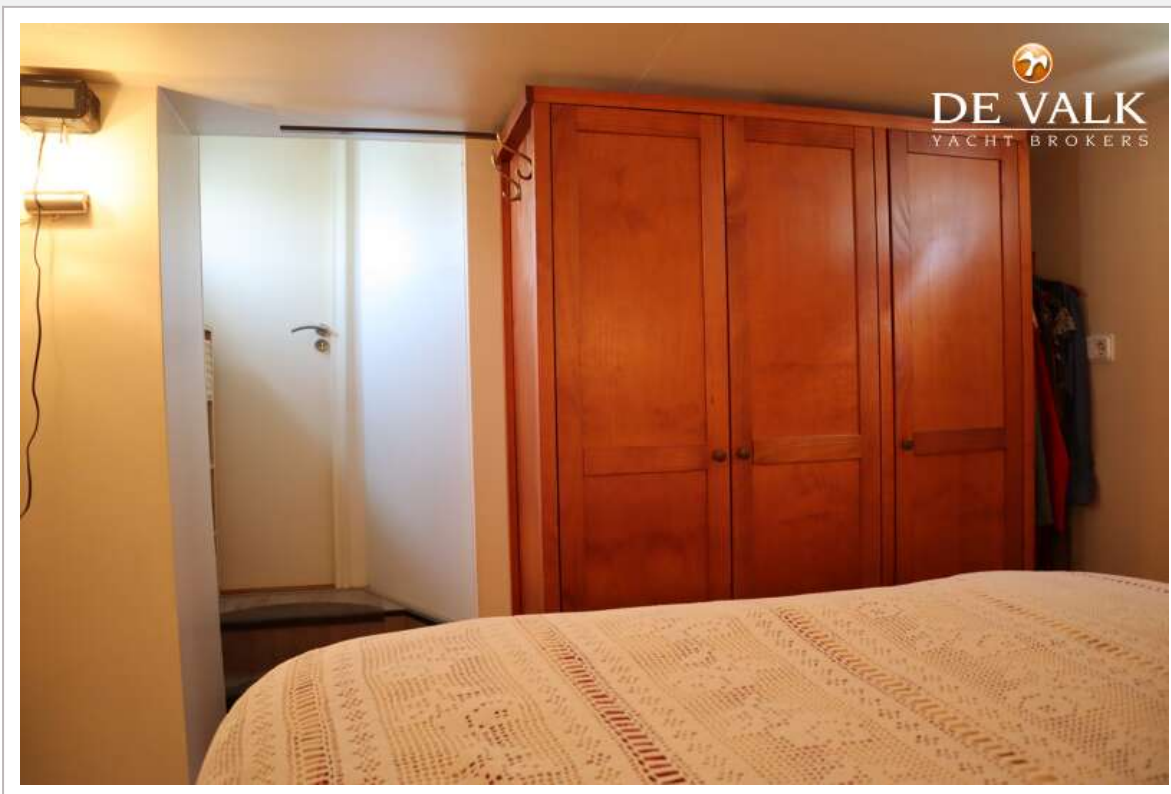


## LUXE MOTOR - KATWIJKER 22 M

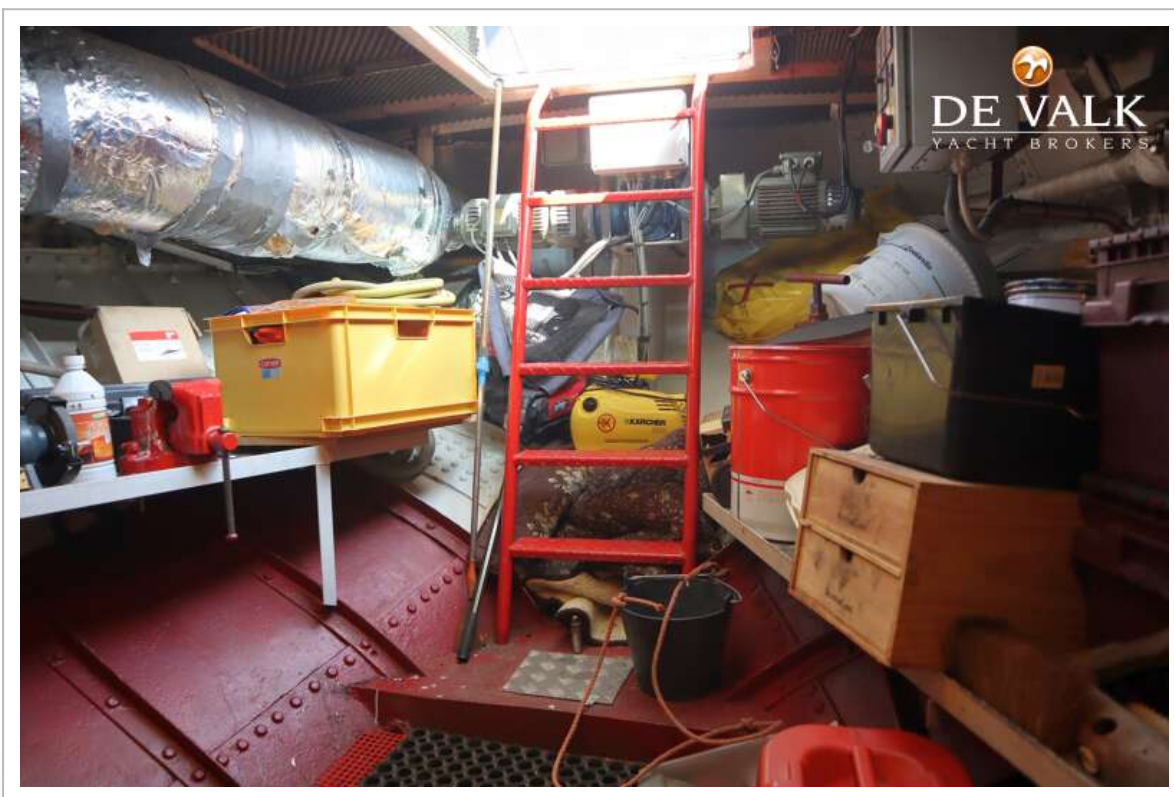




## LUXE MOTOR - KATWIJKER 22 M



## LUXE MOTOR - KATWIJKER 22 M





## LUXE MOTOR - KATWIJKER 22 M

