



X-YACHTS X-46



X-YACHTS X-46

BROKER'S COMMENTS

The X-46 has been maintained and updated at the highest level. All navigation B & G instruments have been renewed in 2023. This X-46 is a fast and comfortable cruiser/club racer. At the moment the boat is in Gran Canaria, so if you would be interested to make an appointment for a visit, please contact our office. If not sold before the end of April 2024, the boat will arrive in June 2024 in Sint Annaland - the Netherlands.

Jan-Ward van Dantzig

SPECIFICATIONS

Dimensions	14.01 x 4.15 x 2.40 (m)	Builder	X-Yachts
Built	2006	Cabins	3
Material	GRP	Berths	7
Engine(s)	1 x Volvo Penta D2-55 diesel	Hp/Kw	55.00 (hp), 40.48 (kw)
Asking price	sold (VAT)	Lying	elsewhere / Not at sales office

CONTACT

Sales office	De Valk Sint Annaland B.V.	Telephone	+31 (0)166 601 000
Address	Koelhuisweg 4 4697 RM Sint Annaland NL	E-mail	sintannaland@devalk.nl

DISCLAIMER

These particulars are given in good faith as supplied but cannot be guaranteed.



X-YACHTS X-46

GENERAL

Model	X-YACHTS X-46
Type	sailing yacht
LOA (m)	14,01
LWL (m)	12,30
Beam (m)	4,15
Draft (m)	2,40
Air draft (m)	21,50
Headroom (m)	2,00
Year built	2006
Builder	X-Yachts
Country	Denmark
Designer	Niels Jeppesen
Displacement (t)	10,4
Ballast (tonnes)	lead 4,5
CE norm	A
Hull material	GRP
Hull colour	white (RAL 9010) with dark blue (RAL 5011) waterline
Hull shape	round-bilged
Keel type	fin keel
Superstructure material	GRP
Deck material	GRP
Deck finish	non-skid moulded in (in bright grey gelcoat - New in 2018)
Superstructure deck finish	non-skid moulded in (in bright grey gelcoat - New in 2018)
Cockpit deck finish	teak
Antifouling (year)	2023
Window frame	aluminium
Window material	polycarbonate
Deckhatch	Moonlight (New windows mounted in hatches in 2018)
Portholes	aluminium Moonlight
Fuel tank (litre)	aluminium 440 (2x 220L), cleaned & provided with inspection covers in 2021



X-YACHTS X-46

Level indicator (fuel tank)	yes
Freshwater tank (litre)	aluminium 330
Level indicator (freshwater)	yes
Wheel steering	cable steering Jefa steering pedestal with a leather covered steering wheel
Emergency tiller	yes
More info on hull	Underwater hull treated with epoxy and all through hull fittings and seacocks renewed in 2018.
Extra info	This X-46 has gone through the prestigious refit program in 2018 by the X Yachts Service Department in Haderslev, Danmark.
Extra info	In 2017 the teak deck was removed and all deck layout removed and mounted again with new stainless steel bolts.
Extra info	New JEFA top & down rudder bearings (New in 2020). Dark blue steering wheel cover.

ACCOMMODATION

Cabins	3
Berths	7
Interior	teak (light)
Layout	3 cabin version with 2 heads
Floor	teak and holly
Saloon	Off white leather upholstery
Headroom saloon (m)	2,00
Heating	diesel ducted hot air New in 2018 : Eberspacher with 6 outlets
Chart table	On starboard side
Aft Cabin	2 x
Dinette	yes
Galley	On port side
Countertop	corian
Sink	stainless steel 2 x
Cooker	calor gas 2 burner - ENO
Oven	ENO



X-YACHTS X-46

Microwave	LG
Fridge	Toploader with an Isotherm SP water cooled compressor
Hot water system	220V + engine Boiler
Water pressure system	electrical
Manual and/or foot pump	yes
Crockery	yes
Owners cabin	double bed Front Cabin
Wardrobe	hanging and shelves
Bathroom	en suite Front bathroom
Toilet	en suite
Toilet system	manual New in 2021 : Jabsco pump with larger toilet base
Wash basin	in the bathroom
Shower	en suite
Extra info	New in 2018 : Pantera premium mattresses
Guest cabin 1	double bed Starboard aft cabin
Wardrobe	hanging and shelves
Bathroom	shared Aft Bathroom
Toilet	shared
Toilet system	manual New in 2021 : Jabsco pump
Wash basin	in the bathroom
Shower	shared
Guest cabin 2	double bed Port Side aft cabin
Wardrobe	hanging and shelves
Extra info	All cabins provided with slatts under every mattress
Extra info	New in 2022 : Ventilators installed in all cabins

MACHINERY

No of engines	1
Make	Volvo Penta
Type	D2-55
HP	55



X-YACHTS X-46

kW	40.48
Fuel	diesel
Year installed	2006
Maximum speed (kn)	9
Cruising speed (kn)	8
Consumption (l/hr)	3,8
Engine hours	1100
Engine cooling system	freshwater heat exchanger
Drive	sail-drive
Saildrive seal	2019
Engine controls	bowden cable
Bowthruster	electric Retractable Max Power VIP 150 (New electric motors in 2018)
Exhaust	watercooled
Propeller type	folding New in 2019 : Volvo Penta
Propeller blades	3
Manual bilge pump	(with new rubbers in 2023)
Electric bilge pump	yes
Bilge alarm	yes
Electrical installation	12 & 220 Volt
Start battery	1 x
Service battery	New in 2018 : 4 x 120 Ah Sonnenschein Gel battery
Battery monitor	yes
Battery charger	yes
Inverter	New in 2019 : 2000 Watt
Solar panel	New in 2022 : 290 Watt on Bimini (with Victron MPPT regulator)
Diode battery combiners	yes
Shorepower	with cable
Insulation transformer	New in 2019 : Mastervolt Mass GI 3.5 Isolation Transformer
Extra info	New in 2019 : Double Racor fuel/water separator switch system
Extra info	New in 2019 : Control panel en PCB for the bowthruster
Extra info	New in 2019 : Volvo Penta saildrive



NAVIGATION

Compass	yes
Multi control display	New in 2023 : B & G H5000 Multifunction display
Depth sounder/log	Via B & G H5000 Multifunction display
Windset	New in 2023 : B & G H5000 Analog AWA
Repeater	New in 2023 : 3 x B & G 20/20 Display
VHF	New in 2018 : Raymarine Ray63 & Raymic cockpit remote unit
Autopilot	New in 2023: B&G NAC3 Core Pack & Triton Display+button control
Rudder angle indicator	New in 2023 : B & G Triton Display
Plotter/GPS	1xB&G Vulcan 7 (2023-inside) & 1xB&G Zeus 3 12" (2018-pedestal)
Electronis chart(s)	New in 2018 & 2023
AIS transceiver	New in 2018 : NAIS500
EPIRB	yes
Navigation lights	3-color top/anchor light LED & LED steam/deck light combi (2020)
Extra info	2022:Hydrovane windvane steering (only in Cran Canaria included)
Extra info	2022: Watt&Sea 600W with bracket (only in Gran Canaria included)

EQUIPMENT

Sprayhood	Dark blue with renewed windows (new in end of 2023)
Bimini	Dark blue (with cockpit extention)
Winter cover	New in 2018 : dark blue winter cockpit cover
Cockpit cushions	Grey
Cockpit table	Teak with a dark blue cover
Bathing platform	With teak
Boarding ladder	stainless steel
Deck shower	(hot and cold water)
Anchor	Rocna New in 2022



X-YACHTS X-46

Anchor chain	yes
Anchor 2	Bruce (as spare also present)
Windlass	electrical
Outboard support	Teak
Sea railing	wire Double stainless steel wired
Grab rail (superstructure)	stainless steel
Railing side opening gates	On both sides
Pushpit	Stainless steel
Pulpit	Stainless steel
Lifebuoy	yes
Radar reflector	yes
Fenders	yes
Mooring lines	yes
Spare parts	yes
TV	New in 2018 : LG 32" smart TV on main bulkhead
Radio-cd player	New in 2018 : Fusion stereo bluetooth system MS-RA70
Cockpit speakers	New in 2018 : Fusion
Speakers in salon	yes
Fire extinguisher	New in 2022
Extra info	New in 2022 : All gassprings from all cockpit locker hatches
Extra info	New in 2022 : Gasdetector & gas hoses
Extra info	The X-46 is a fast and well-known comfortable cruiser/club racer. Typically designed with a competitive crew in mind, targeting club regattas, but also for relaxed comfortable holiday cruising with family and friends.

RIGGING

Rigging	fractional
Standing rigging	Rod New in 2018 and checked by rigger in 2023
Brand mast	John mast
Material mast	aluminium
Spreaders	3 x set of spreaders



Keel stepped mast	yes
Mainsail	1 x Olympic Sails : grey laminate membrane (New in 2017 - very nice condition) & 1 x Rolly Tasker Sails : Dacron Offshore (with 3 x reef - Never Used - New in 2021)
Mainsail cover	Dark blue Lazy-Bag with Lazy-Jacks
High aspect	Olympic Sails: grey laminate membrane with battens (New in 2017)
Genoa	New in 2021 : Rolly Tasker Sails : Dacron Offshore
Genoa furler	Furlex (drum is mounted below deck). Top Swivel renewed in 2018
Genoa cover	Dark blue
Code Zero	New in 2023 : Rolly Tasker Sails : Code C with a Ronstan furler
Reefing System	slabreefing
Backstay adjuster	hydraulic New in 2022 : Sailtec
Boomvang	gasspring John Mast vang (2018). New Gasspring&Dyneema kicker line 07/2023
Primary sheet winch	2 x Andersen 46 ST (main sheet)
Genoa sheetwinches	2 x Andersen 58 ST
Halyard winches	2 x Andersen 46 ST (1x electric)
Gennaker pole	carbon Bowsprit with bob stay (removable)
Extra info	New in 2020 : Spinlock XX powerclutch.
Extra info	New in 2019 : Dyneema backstay incl. carbon flickr. Dyneema 10 mm double halyard for code zero with dead end fitting.



X-YACHTS X-46



X-YACHTS X-46



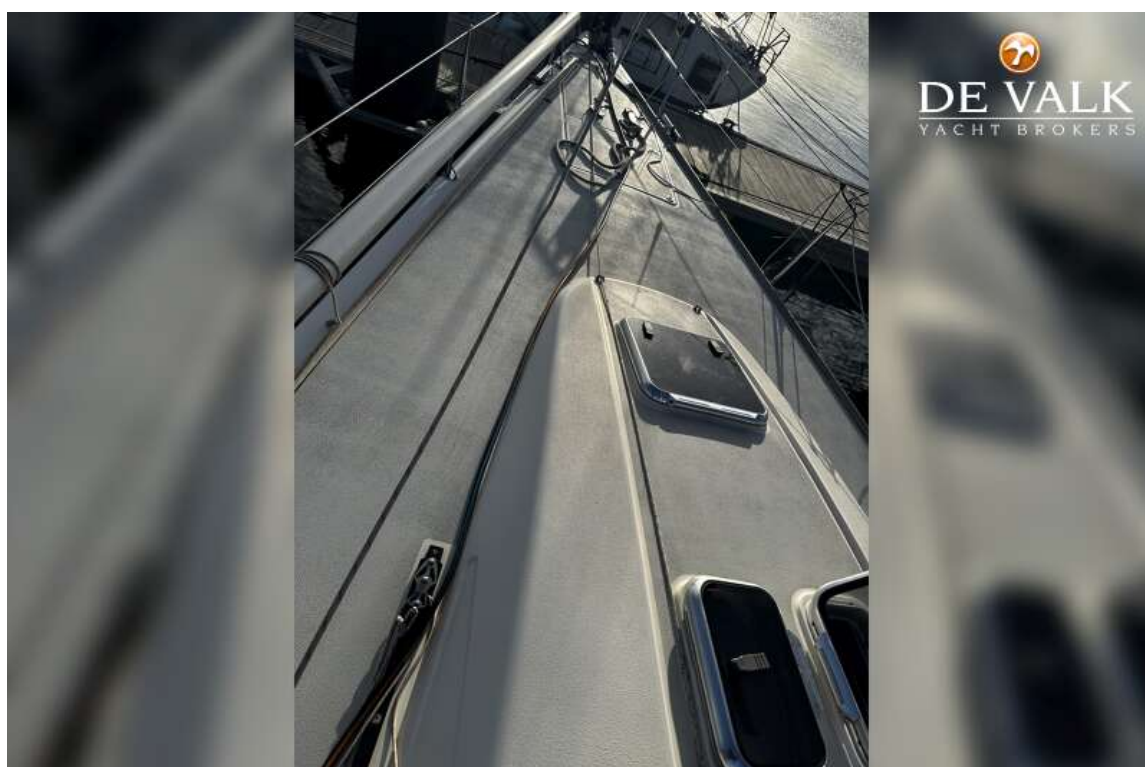
X-YACHTS X-46



X-YACHTS X-46



X-YACHTS X-46



X-YACHTS X-46



X-YACHTS X-46



X-YACHTS X-46



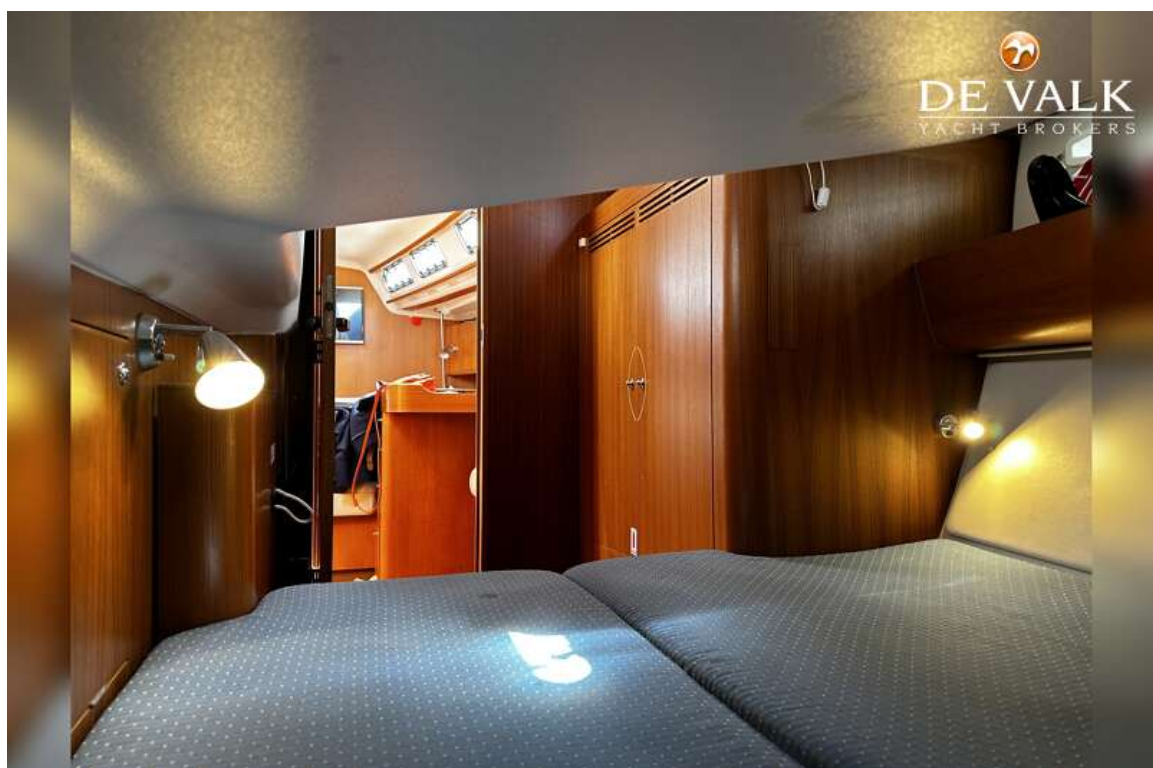
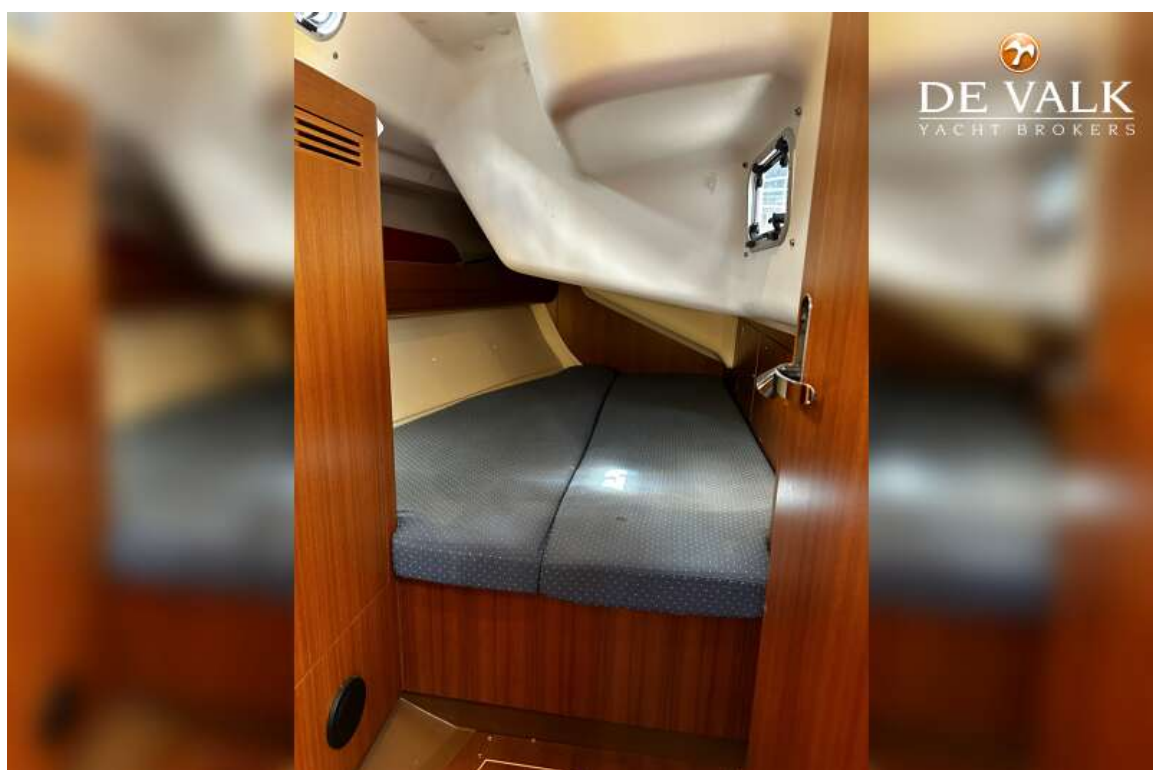
X-YACHTS X-46



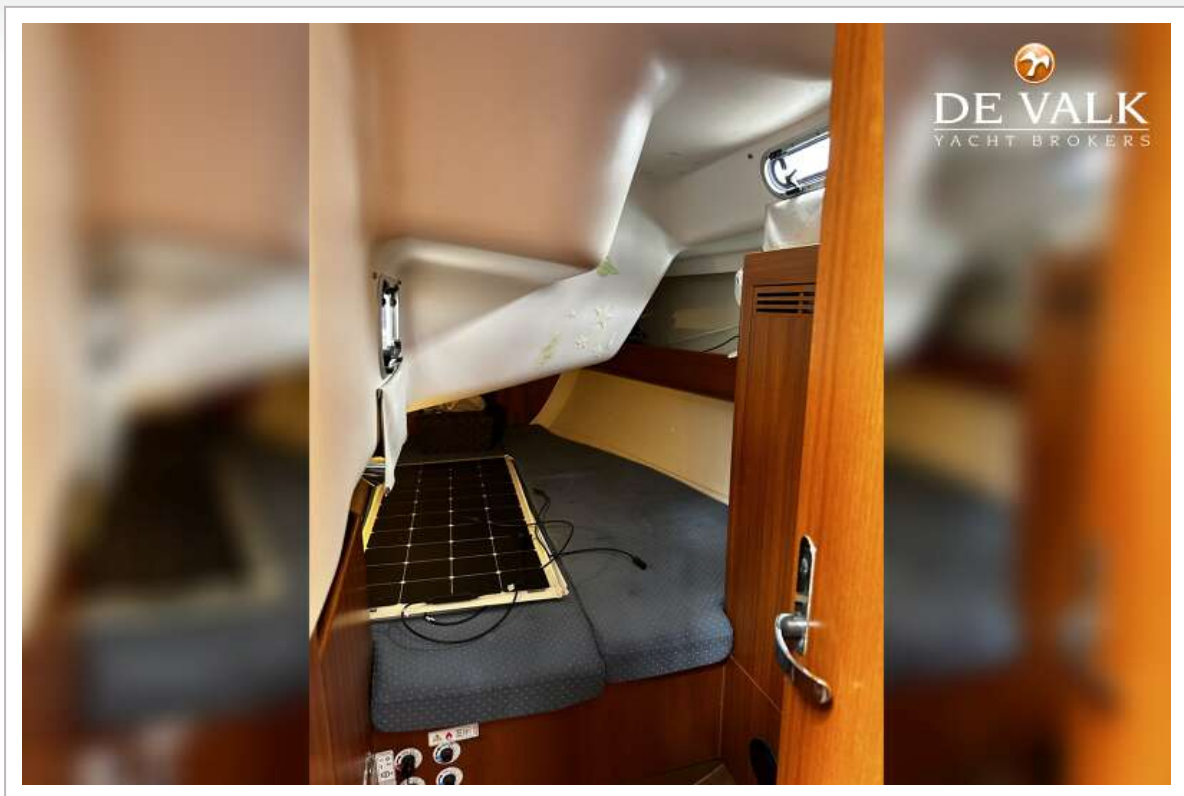
X-YACHTS X-46



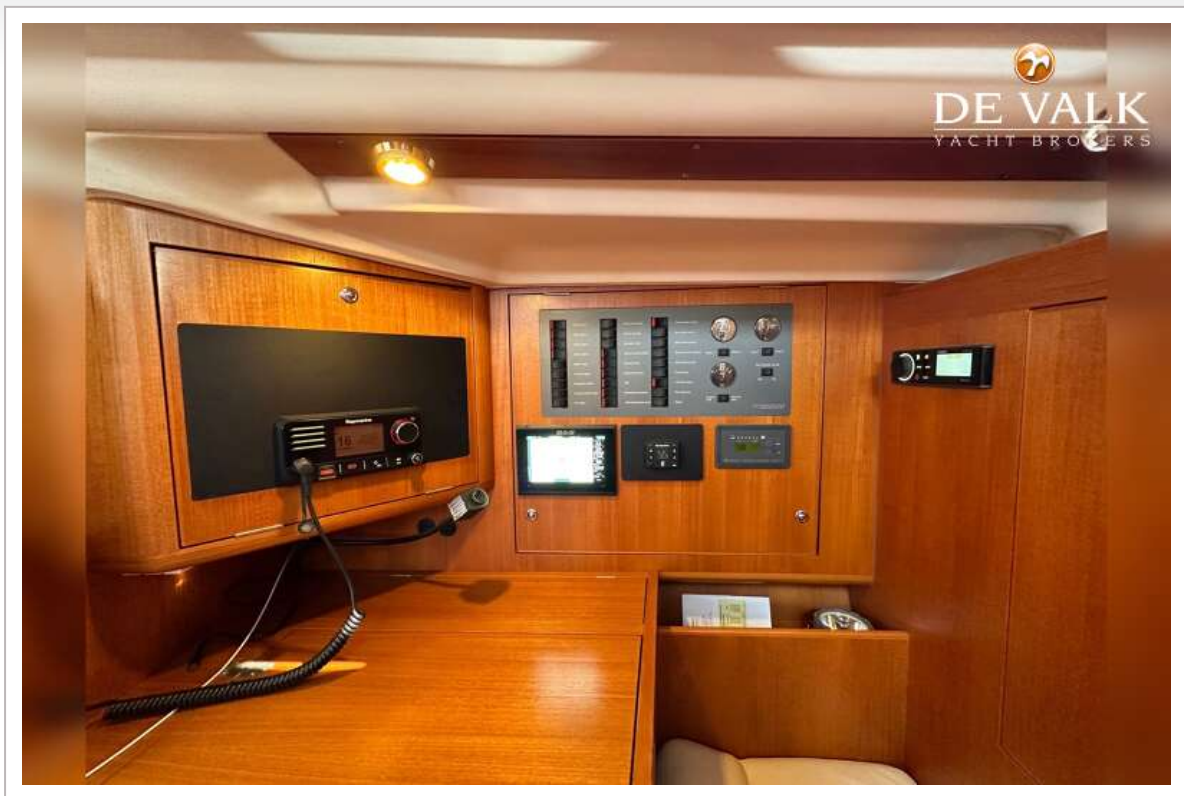
X-YACHTS X-46



X-YACHTS X-46



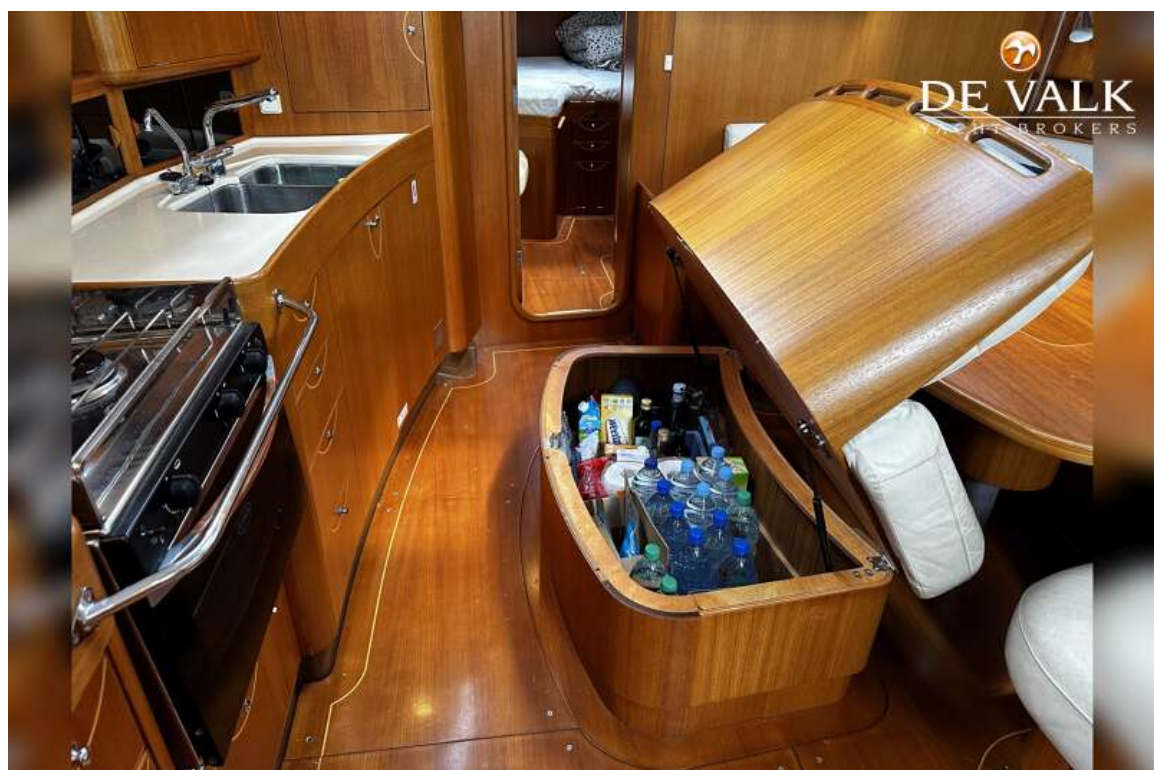
X-YACHTS X-46



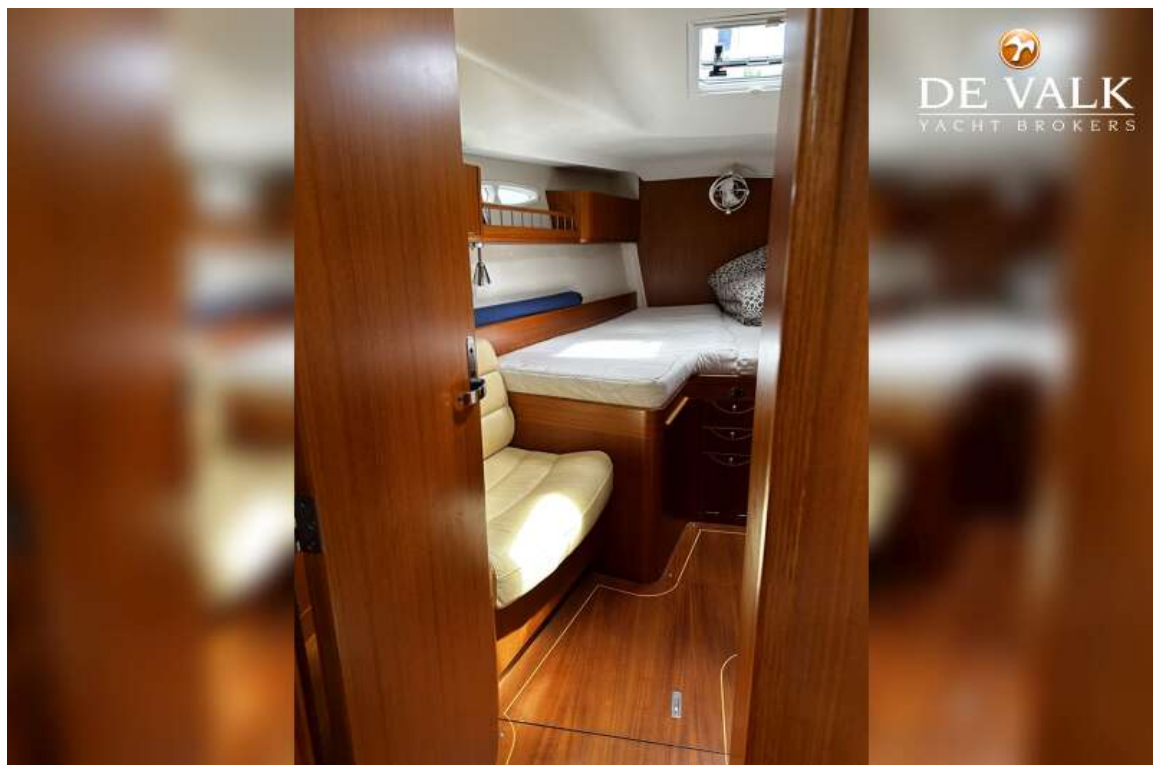
X-YACHTS X-46



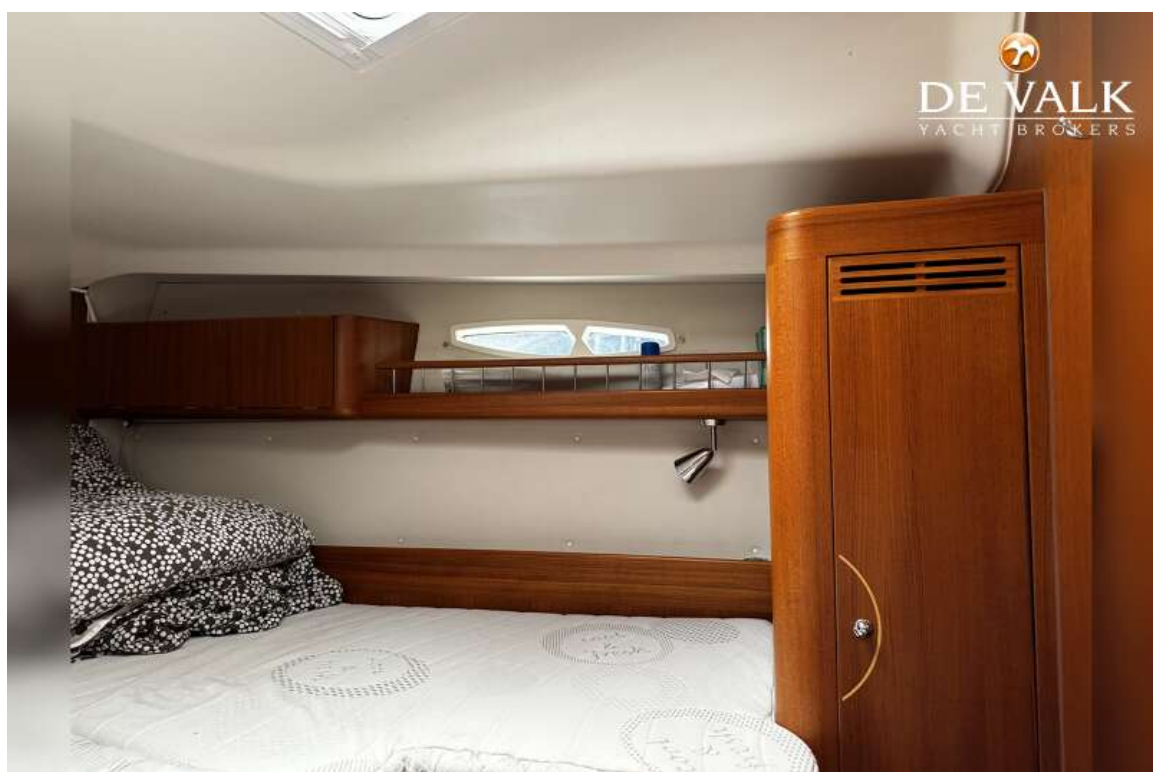
X-YACHTS X-46



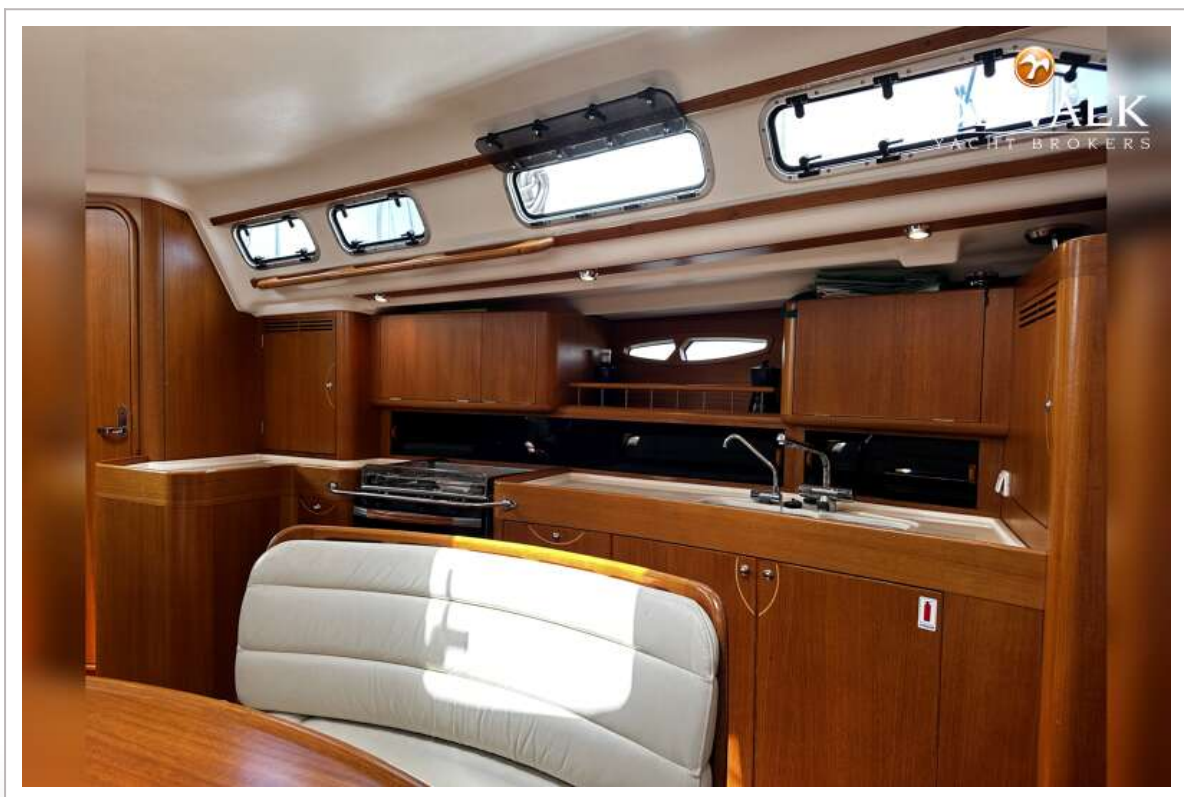
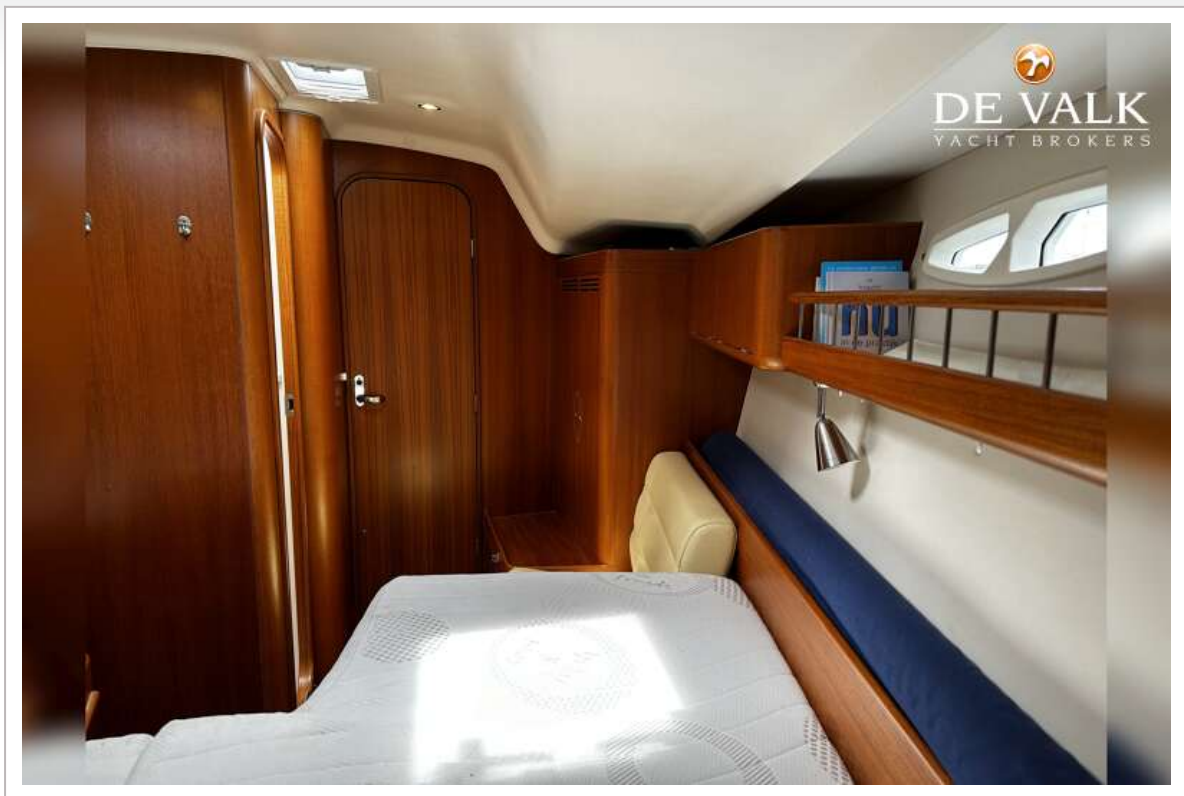
X-YACHTS X-46



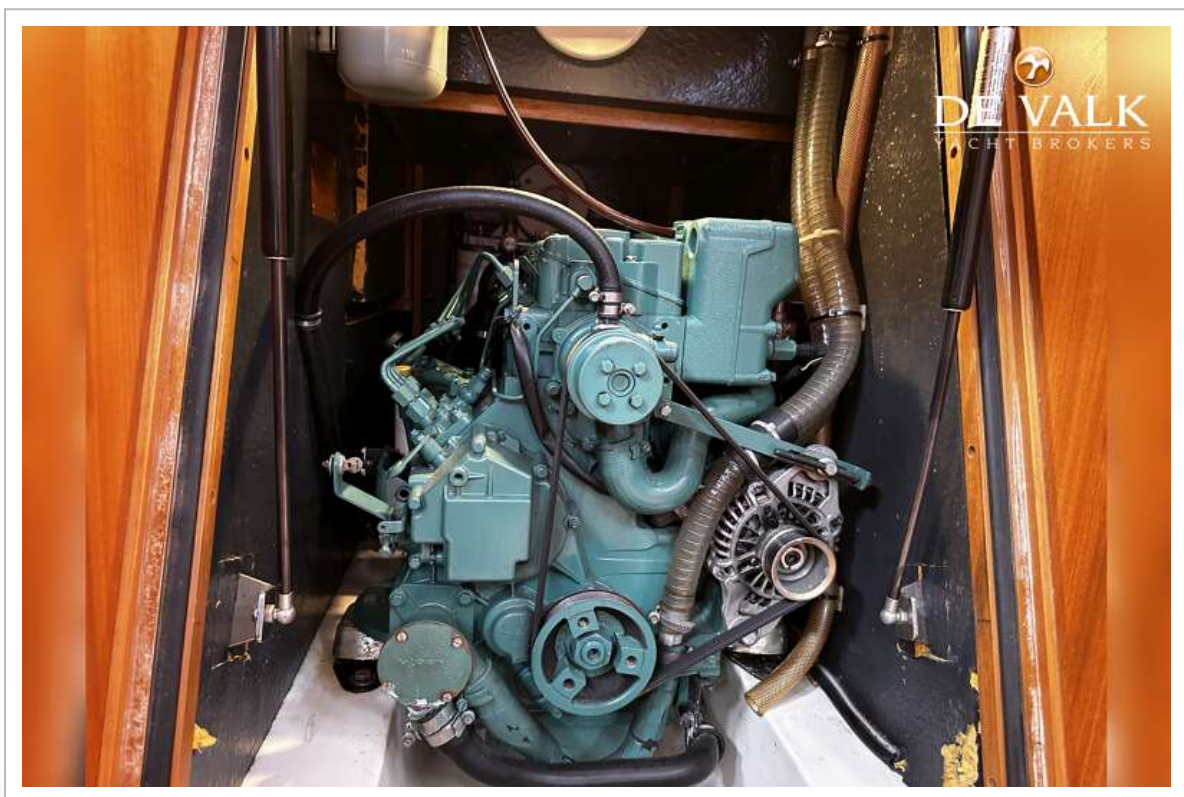
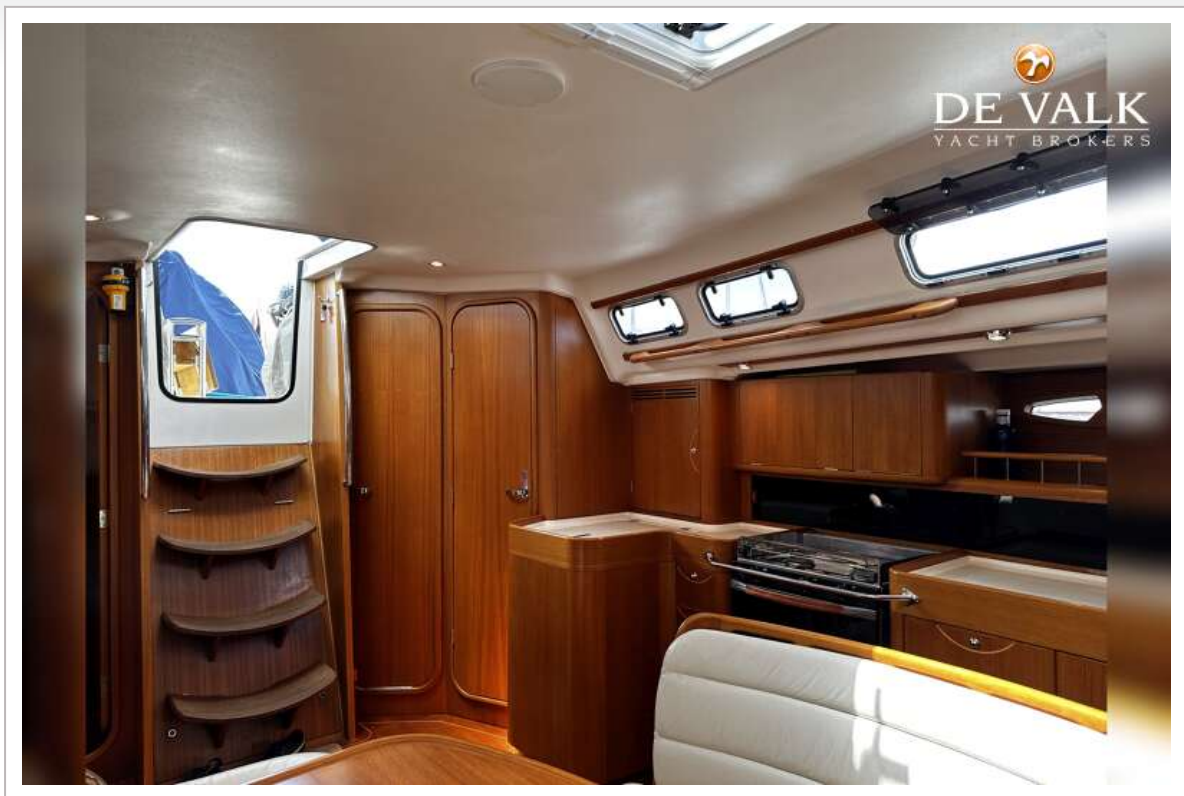
X-YACHTS X-46



X-YACHTS X-46



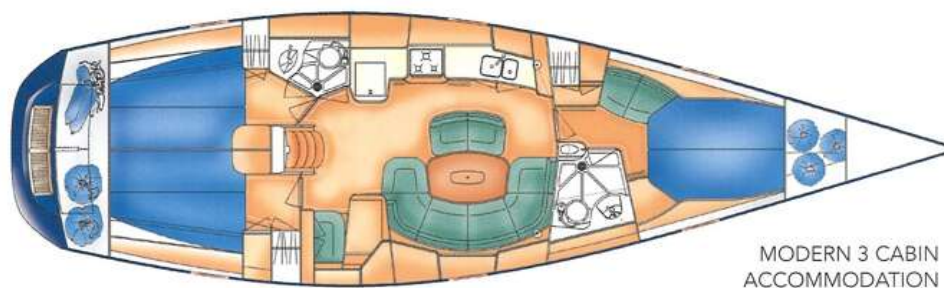
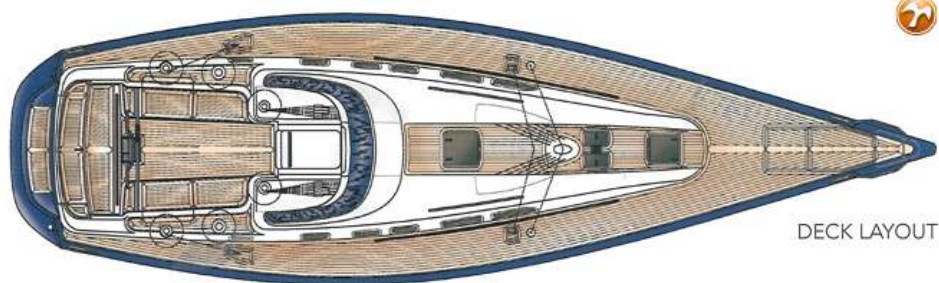
X-YACHTS X-46



X-YACHTS X-46



X-YACHTS X-46



X-YACHTS X-46

