



DE VALK  
YACHT BROKERS



## DUFOUR 350 GRAND LARGE



DE VALK  
YACHT BROKERS

# DUFOUR 350 GRAND LARGE

## BROKER'S COMMENTS

This Dufour 350GL has a modern design by Umberto Felci and the Dufour design team. It has a spacious interior, plenty of storage space and comfortable accommodation on board. This Dufour 350 GL has two cabins, a good reputation in the sailing world, good handling and is also equipped with a double steering wheel. If you are interested in this well-maintained yacht, which is ready to set sail, please visit our office in Hindeloopen!

*Henk Sijbranda*

## SPECIFICATIONS

<b>Dimensions</b>	10.30 x 3.54 x 1.90 (m)	<b>Builder</b>	Dufour Yachts
<b>Built</b>	2016	<b>Cabins</b>	2
<b>Material</b>	GRP	<b>Berths</b>	6
<b>Engine(s)</b>	1 x Volvp Penta D1-30F diesel	<b>Hp/Kw</b>	30.00 (hp), 22.05 (kw)
<b>Asking price</b>	sold (VAT )	<b>Lying</b>	at sales office

## CONTACT

<b>Sales office</b>	De Valk Hindeloopen B.V.	<b>Telephone</b>	+31 514 52 40 00
<b>Address</b>	Oosterstrand 1 8713 JS Hindeloopen NL	<b>E-mail</b>	hindeloopen@devalk.nl

## DISCLAIMER

These particulars are given in good faith as supplied but cannot be guaranteed.



# DUFOUR 350 GRAND LARGE

## GENERAL

Model	DUFOUR 350 GRAND LARGE
Type	sailing yacht
LOA (m)	10,30
LWL (m)	9,05
Beam (m)	3,54
Draft (m)	1,90
Year built	2016
Launched	Augustus 2017
Builder	Dufour Yachts
Country	France
Designer	Umberto Felci
Displacement (t)	5,73
CE norm	A
Hull material	GRP
Hull colour	white
Rubbing strake	stainless steel
Deck material	GRP
Deck finish	non-skid moulded in
Superstructure deck finish	non-skid moulded in
Cockpit deck finish	teak
Antifouling (year)	Aug 2017 Nov Dec 2021
Fuel tank (litre)	polyethylene 200L
Level indicator (fuel tank)	yes
Freshwater tank (litre)	polyethylene 200L
Level indicator (freshwater)	yes
Blackwater tank (litre)	polyethylene 50L
Blackwater tank extraction	deck extraction
Wheel steering	chain steering 2x
Emergency tiller	yes



# DUFOUR 350 GRAND LARGE

## ACCOMMODATION

Cabins	2
Berths	6
Interior	mahogany
Floor	woodprint
Aft deck	yes
Saloon	yes
Headroom saloon (m)	1,9M
Heating	diesel ducted hot air Webasto
Navigation center	yes
Chart table	yes
Aft Cabin	yes
Opening door to cockpit	yes
Galley	yes
Countertop	corian Weiss
Sink	stainless steel
Cooker	calor gas 2x
Oven	yes
Fridge	yes
Hot water system	220V + engine
Water pressure system	electrical
Manual and/or foot pump	yes
Owners cabin	v-bed
Bed length (m)	1,8x 2,0m
Wardrobe	hanging and shelves
Bathroom	shared
Toilet	shared
Toilet system	electric
Wash basin	at the toilet
Shower	shared
Guest cabin 1	double bed



# DUFOUR 350 GRAND LARGE

Bed length (m)	1,8x 2,0m
Wardrobe	shelves
Bathroom	shared
Toilet	shared
Toilet system	electric
Wash basin	at the toilet
Shower	shared

## MACHINERY

No of engines	1
Make	Volvo Penta
Type	D1-30F
HP	30
kW	22,05
Fuel	diesel
Year installed	2016
Maximum speed (kn)	7
Cruising speed (kn)	6
Consumption (l/hr)	2
Engine hours	326
Engine cooling system	
Drive	shaft
Saildrive seal	yes
Engine controls	electrical & bowden cable
Exhaust	watercooled
Propeller type	fixed
Manual bilge pump	yes
Electric bilge pump	yes
Start battery	yes
Service battery	2x
Battery charger	yes



# DUFOUR 350 GRAND LARGE

Shorepower	with cable
------------	------------

## NAVIGATION

Compass	yes
Electric compass	yes
Multi control display	Raymarine I70, P70, A65
Depth sounder	yes
Depth sounder/log	yes
Log	yes
VHF	yes
Autopilot	Lewmar
Rudder angle indicator	yes
GPS	yes
Plotter	yes
Radio receiver	yes
Navigation lights	yes

## EQUIPMENT

Fixed windscreen	yes
Sprayhood	yes
Bimini	yes
Cockpit cushions	yes
Cockpit table	yes
Bathing platform	yes
Boarding ladder	aluminum
Deck shower	yes
Anchor	Delta
Anchor chain	yes
Windlass	electrical
Sea railing	wire
Radar reflector	yes



# DUFOUR 350 GRAND LARGE

Fenders	yes
Radio-cd player	yes
Cockpit speakers	yes
Speakers in salon	yes
Fire extinguisher	yes

## RIGGING

Rigging	sloop
Material mast	aluminium
Spreaders	yes
Keel stepped mast	yes
Mainsail	yes
Stoway mast	yes
Genoa furler	yes
Self tacking jib installation	Prepaired
Primary sheet winch	yes
Genoa sheetwinches	yes

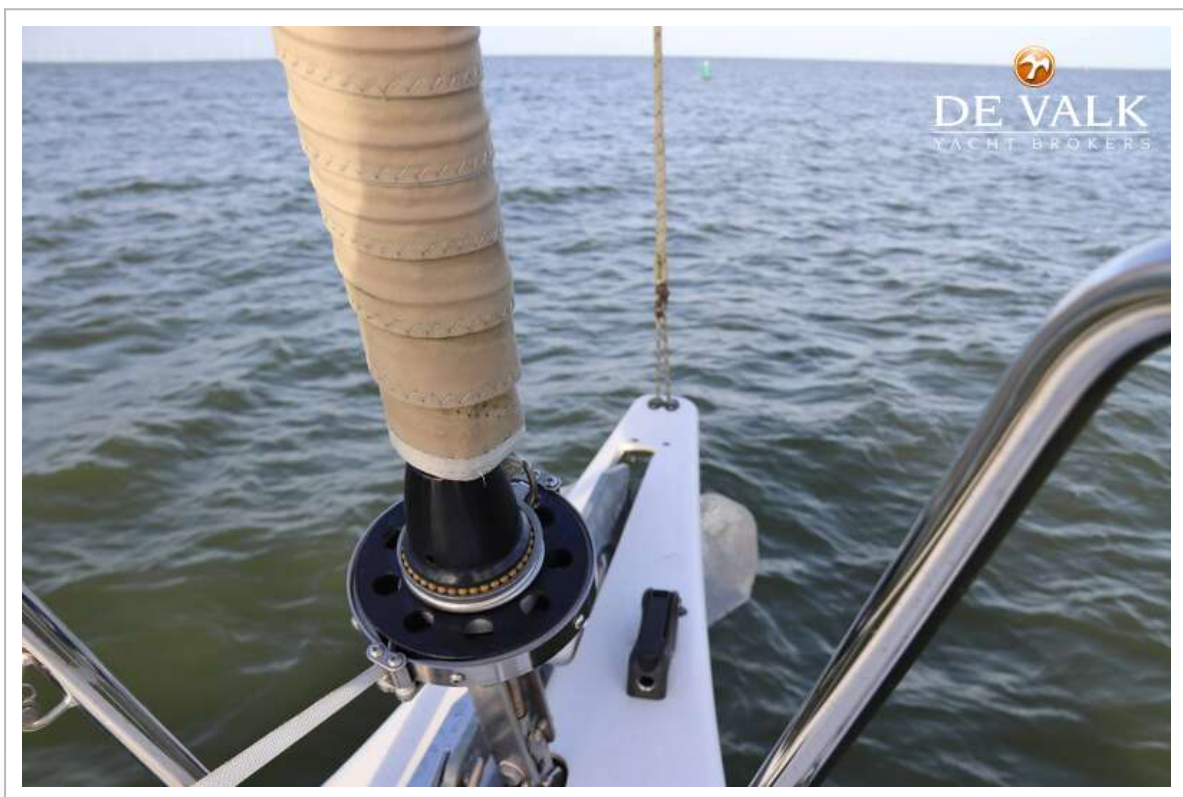


# DUFOUR 350 GRAND LARGE





# DUFOUR 350 GRAND LARGE

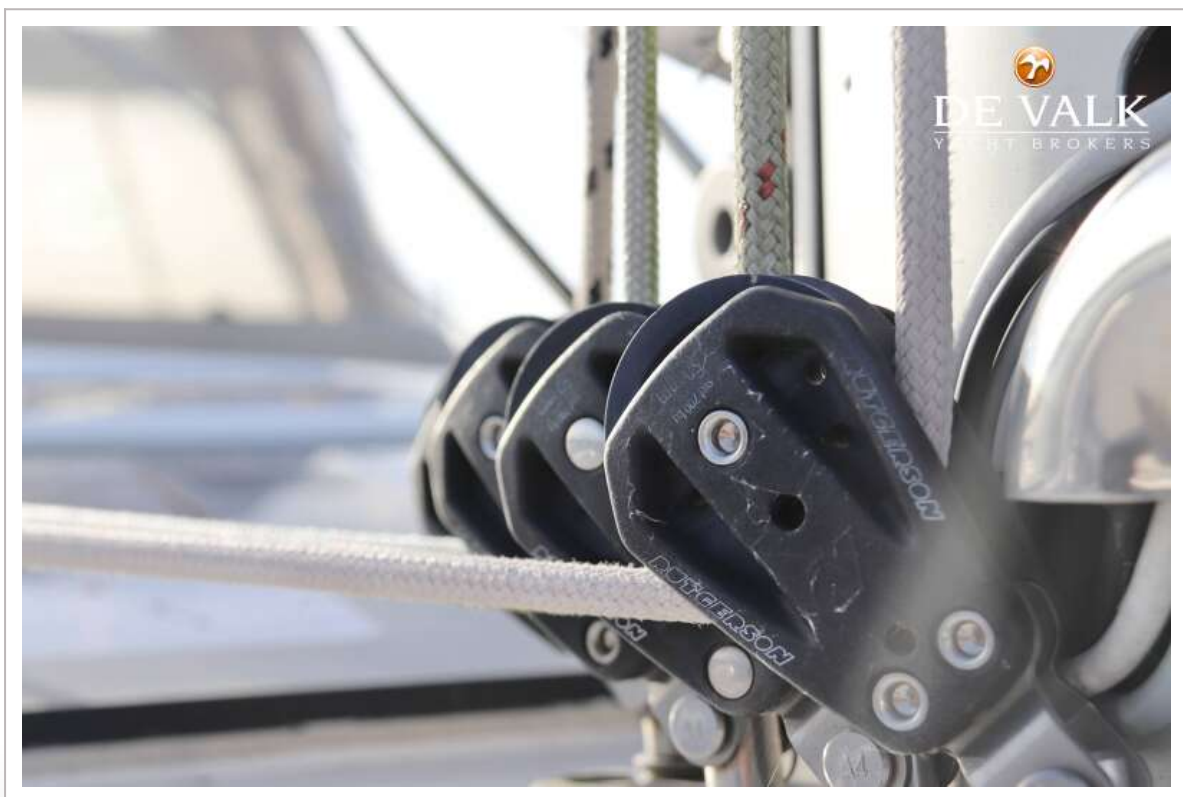


# DUFOUR 350 GRAND LARGE

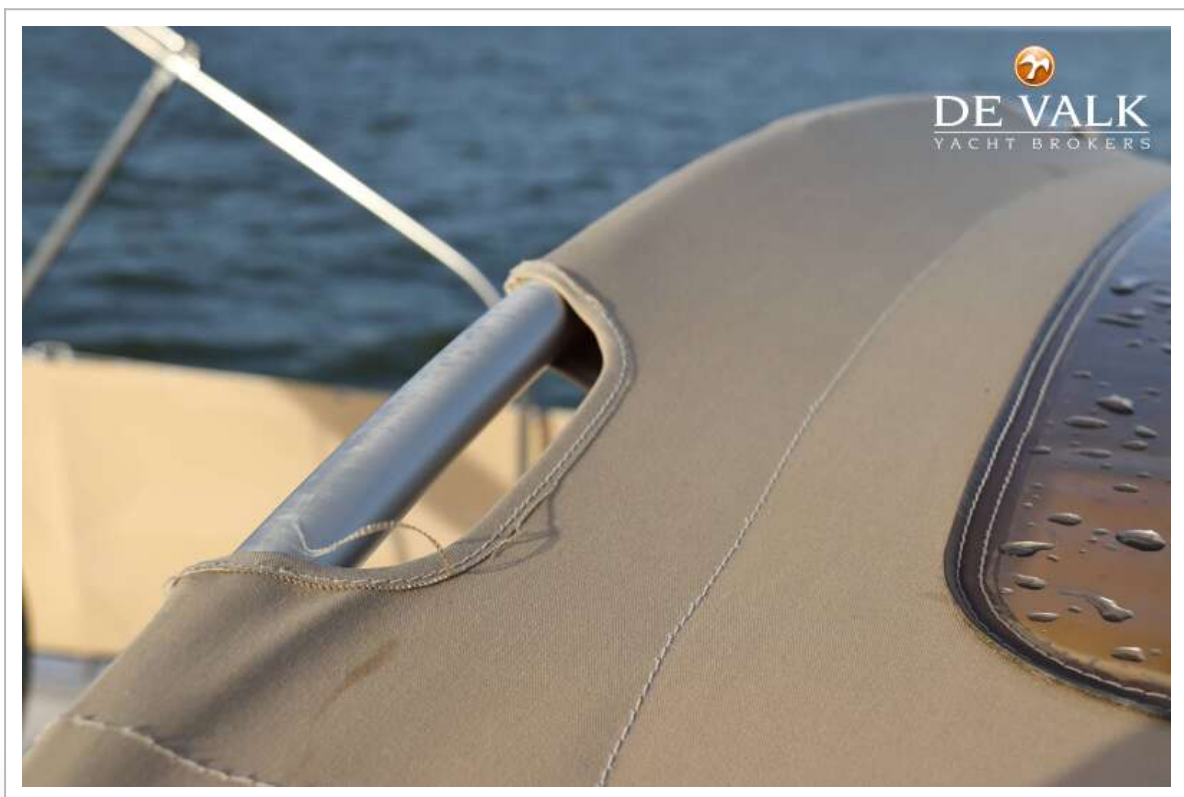




# DUFOUR 350 GRAND LARGE



# DUFOUR 350 GRAND LARGE

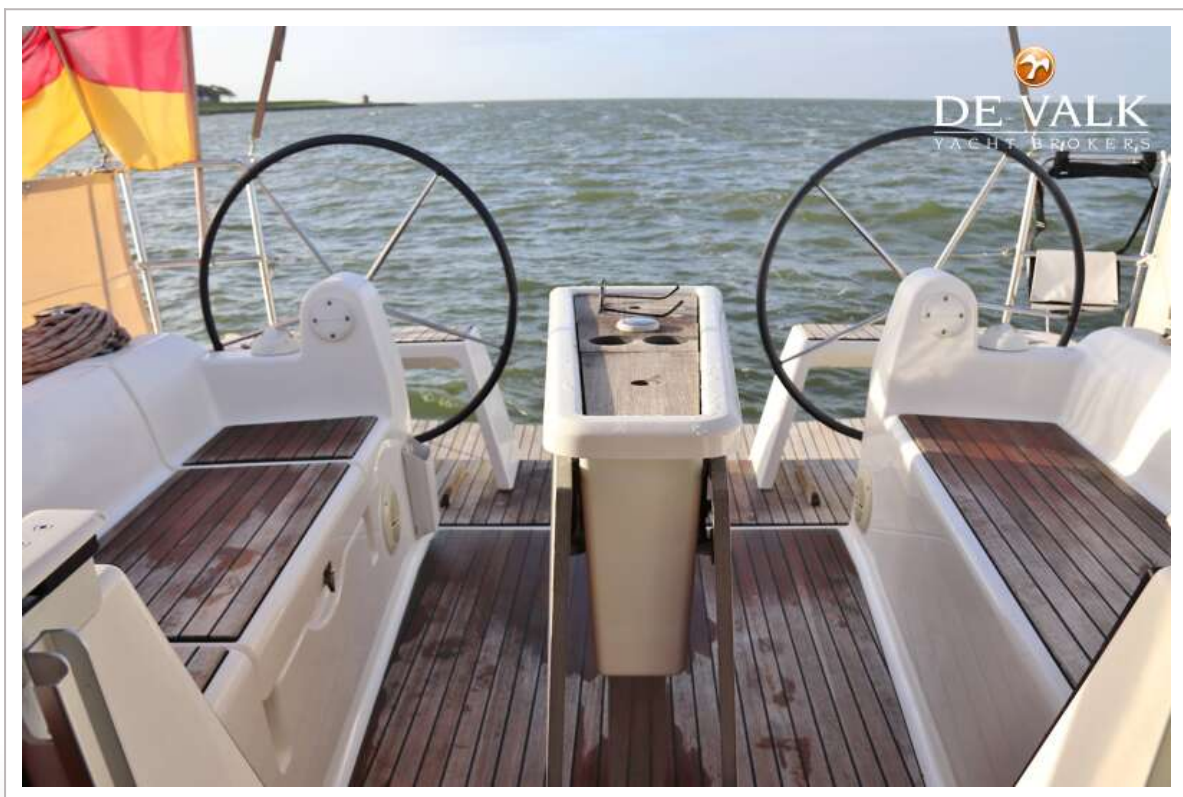


# DUFOUR 350 GRAND LARGE





# DUFOUR 350 GRAND LARGE



# DUFOUR 350 GRAND LARGE



# DUFOUR 350 GRAND LARGE





# DUFOUR 350 GRAND LARGE



# DUFOUR 350 GRAND LARGE





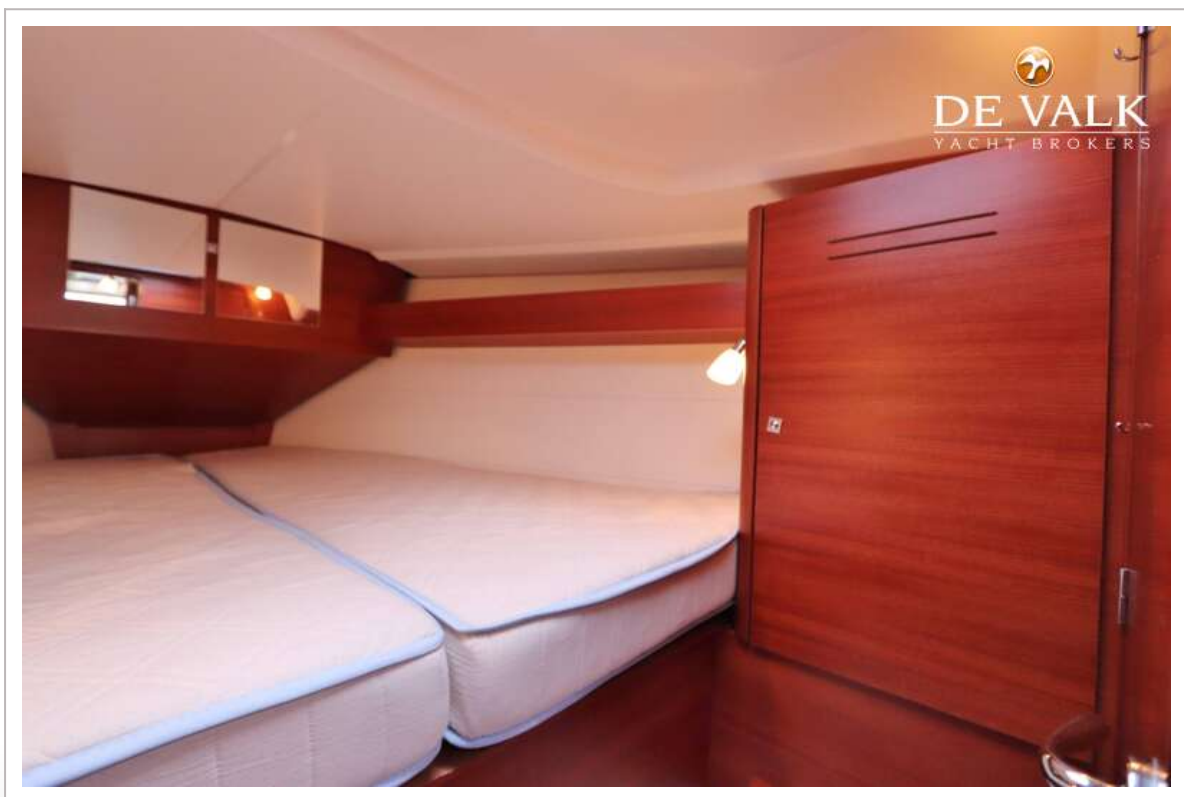
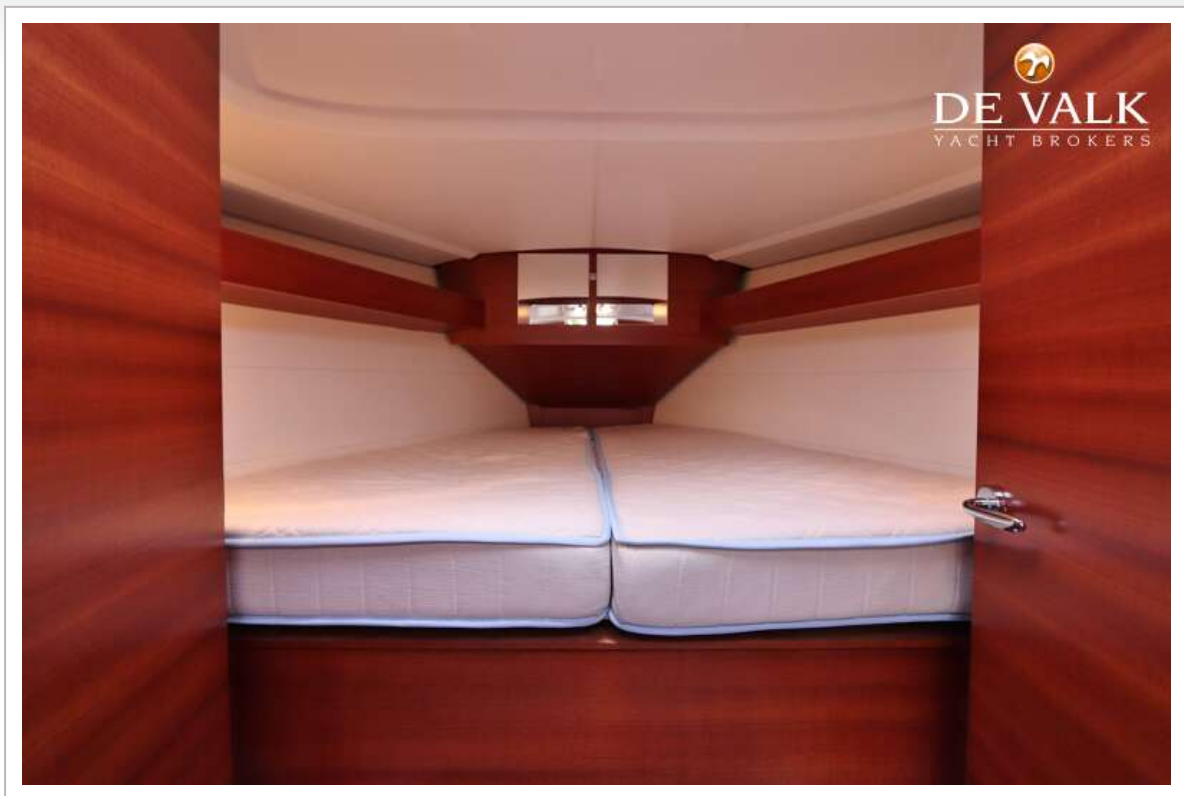
# DUFOUR 350 GRAND LARGE



# DUFOUR 350 GRAND LARGE



# DUFOUR 350 GRAND LARGE





# DUFOUR 350 GRAND LARGE



# DUFOUR 350 GRAND LARGE



## DUFOUR 350 GRAND LARGE





# DUFOUR 350 GRAND LARGE



# DUFOUR 350 GRAND LARGE

