



**THIS YACHT WILL BE AUCTIONED**

**MENORQUIN 1500 HT**



# MENORQUIN 1500 HT

## BROKER'S COMMENTS

This Menorquin is a well maintained and fully equipped vessel. Recently, this Menorquin has been refitted whereby the complete ship and underwater hull have been taken care of. The turbo's have been cleaned and overhauled, all valves have been renewed and there are new filters everywhere. In short, a very well maintained boat that has not been saved on anything. The menorquin will be auctioned online at Troostwijk auctions.com. Bids can only be placed online at Troostwijk Auctions. All information about the auction is available on the website <https://bit.ly/3LNrCGr>

*Mark Hesselmans*

## SPECIFICATIONS

<b>Dimensions</b>	15.35 x 5.00 x 1.20 (m)	<b>Builder</b>	
<b>Built</b>	1999	<b>Cabins</b>	2
<b>Material</b>	GRP	<b>Berths</b>	4
<b>Engine(s)</b>	2 x Volvo Penta TAMD 63 diesel	<b>Hp/Kw</b>	2 x 370.00 (hp), 271.95 (kw)
<b>Asking price</b>	sold (VAT )	<b>Lying</b>	at sales office

## CONTACT

<b>Sales office</b>	De Valk Loosdrecht B.V.	<b>Telephone</b>	+31 (0)35 582 90 30
<b>Address</b>	't Breukeleveense Meentje 6 1231LM Loosdrecht / Wijdmeren NL	<b>E-mail</b>	loosdrecht@devalk.nl

## DISCLAIMER

These particulars are given in good faith as supplied but cannot be guaranteed.



# MENORQUIN 1500 HT

## GENERAL

Model	MENORQUIN 1500 HT
Type	motor yacht
LOA (m)	15,35
LWL (m)	14,75
Beam (m)	5,00
Draft (m)	1,20
Air draft (m)	3,25
Headroom (m)	1,97
Year built	1999
Country	Spain
Displacement (t)	25
CE norm	B
Hull material	GRP
Hull colour	blue
Superstructure material	GRP
Rubbing strake	stainless steel
Deck material	GRP
Deck finish	teak
Superstructure deck finish	non-skid moulded in
Cockpit deck finish	teak
Window frame	aluminium
Window material	glass
Portholes	aluminium
Radar arch	collapsible Stainless steel
Fuel tank (litre)	1600
Level indicator (fuel tank)	yes
Freshwater tank (litre)	aluminium 1000
Blackwater tank (litre)	aluminium 80
Level indicator (blackwater)	yes
Blackwater tank extraction	deck extraction + pump



Wheel steering	hydraulic
Inside helm position	yes
Emergency tiller	yes

## ACCOMMODATION

Cabins	2
Berths	4
Interior	teak
Floor	teak and holly
Open cockpit	yes
Pilot house/deck saloon	yes
Saloon	yes
Headroom saloon (m)	1.97 +/-
Heating	electric 220V Webasto BlueCool S-series
Air-conditioning	reverse cycle airco Webasto BlueCool S-series 20000BTU 2021
Dinette	yes
Dinette to convert into berth	yes
Opening door to aft deck	yes
Galley	yes
Countertop	corian
Sink	stainless steel 2x
Cooker	calor gas 2 burner
Microwave	Samsung
Fridge	2x, 1x isotherm 2021
Hot water system	220V + engine
Water pressure system	electrical
Hot water tap	yes
Owners cabin	French bed
Wardrobe	hanging and shelves
Bathroom	en suite
Toilet	en suite Johnson pump SPXflow



# MENORQUIN 1500 HT

Toilet system	electric Jonson pump SPXflow
Wash basin	in the bathroom
Shower	en suite
Guest cabin 1	double bed
Wardrobe	hanging and shelves
Bathroom	shared
Toilet	shared Johnson pump SPXflow
Toilet system	electric Johnson pump SPXflow
Wash basin	in the bathroom
Shower	shared
Extra info	Boiler 2021
Wardrobe	drawers
Wardrobe	drawers

## MACHINERY

No of engines	2
Make	Volvo Penta
Type	TAMD 63
HP	370
kW	271.95
Fuel	diesel
Maximum speed (kn)	18
Cruising speed (kn)	13
Engine hours	2706
Drive	shaft
Shaft seal	yes
Engine controls	electrical
Gearbox	yes
Bowthruster	electric Vetus
Exhaust	watercooled
Propeller type	fixed



# MENORQUIN 1500 HT

Propeller shaft material	stainless steel
Shaft lubrication	water
Electric bilge pump	yes
Bilge alarm	yes
Electrical installation	yes
Batteries	yes
Start battery	2x
Service battery	yes
Bowthruster battery	yes
Battery charger	yes
Shorepower	with cable
Extra info	Ceiling lights LED, all electra re-done 2021
Extra info	Underwater Lighting Ocean X16

## NAVIGATION

Compass	Plastimo
VHF	Garmin VHF 215 with AIS 2021
Autopilot	Raytheon ST7000+
Rudder angle indicator	yes
Radar	Garmin 2021
Plotter	Garmin 8410 2021
Radar/GPS/plotter	Garmin with Fushino radio System and remote
AIS receiver	Garmin
Navigation lights	yes

## EQUIPMENT

Window cover	yes
Bathing platform	yes
Boarding ladder	aluminum
Transom door	yes
Gangway	Hydraulic



# MENORQUIN 1500 HT

Anchor	yes
Anchor chain	yes
Windlass	electrical
Capstan	yes
Sea railing	stainless steel
Grab rail (superstructure)	stainless steel
Railing side opening gates	yes
Wiper	yes
Horn	yes
Fenders	yes
Mooring lines	yes
Cockpit speakers	yes
Speakers in salon	yes
Clock - barometer	yes
Fire extinguisher	yes
Extinguisher in engine room	yes
Auto extinguisher system	yes
Extra info	New Hertz sound system 1700Watt
Extra info	Sun and privacy fabric `Soltis92` Aluwhite



# MENORQUIN 1500 HT



BROKERAGE | CHARTER | BERTHS | FINANCE | INSURANCE | YACHT MANAGEMENT

**DE VALK**  
YACHT BROKERS



**This yacht will be auctioned,  
for further details please visit [www.devalk.nl](http://www.devalk.nl)**

**Dit schip zal worden geveild,  
voor meer informatie gaat u naar [www.devalk.nl](http://www.devalk.nl)**

**Dieses Schiff wird versteigert,  
für weitere informationen besuchen Sie [www.devalk.nl](http://www.devalk.nl)**

[WWW.DEVALK.NL](http://WWW.DEVALK.NL)



**DE VALK**  
YACHT BROKERS





# MENORQUIN 1500 HT



# MENORQUIN 1500 HT

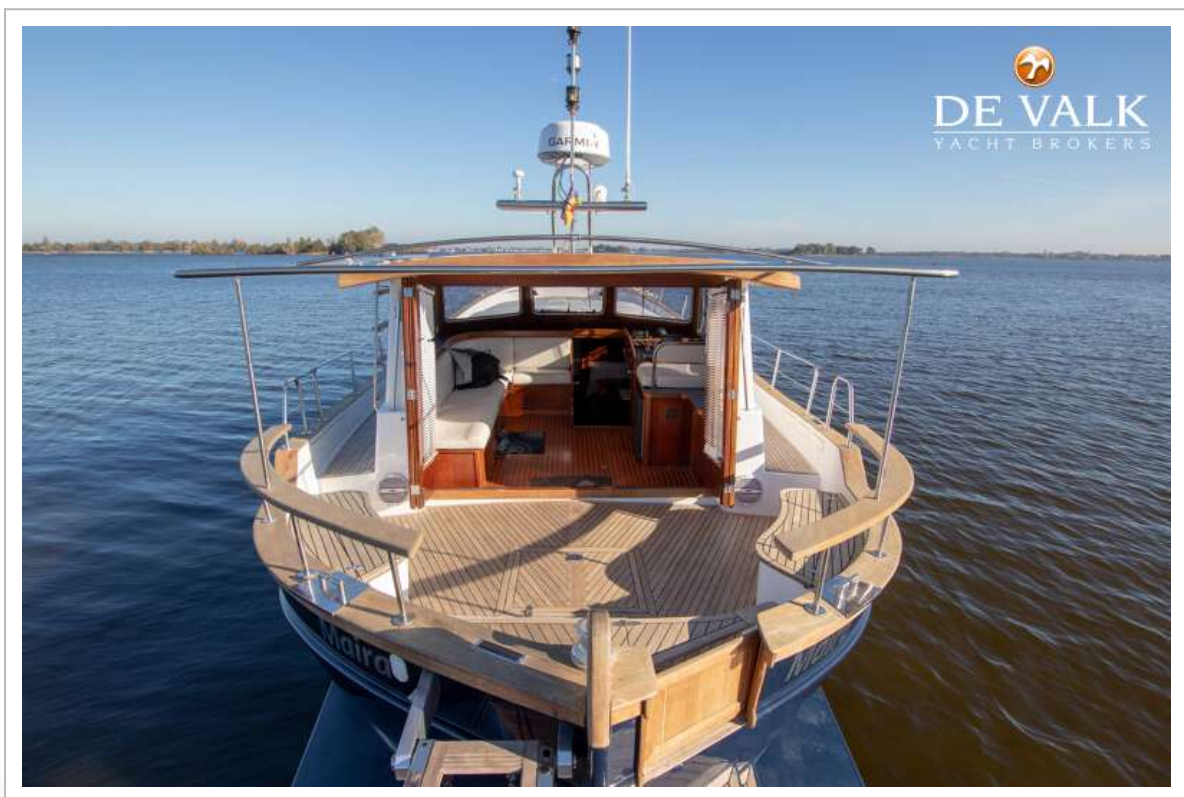




# MENORQUIN 1500 HT

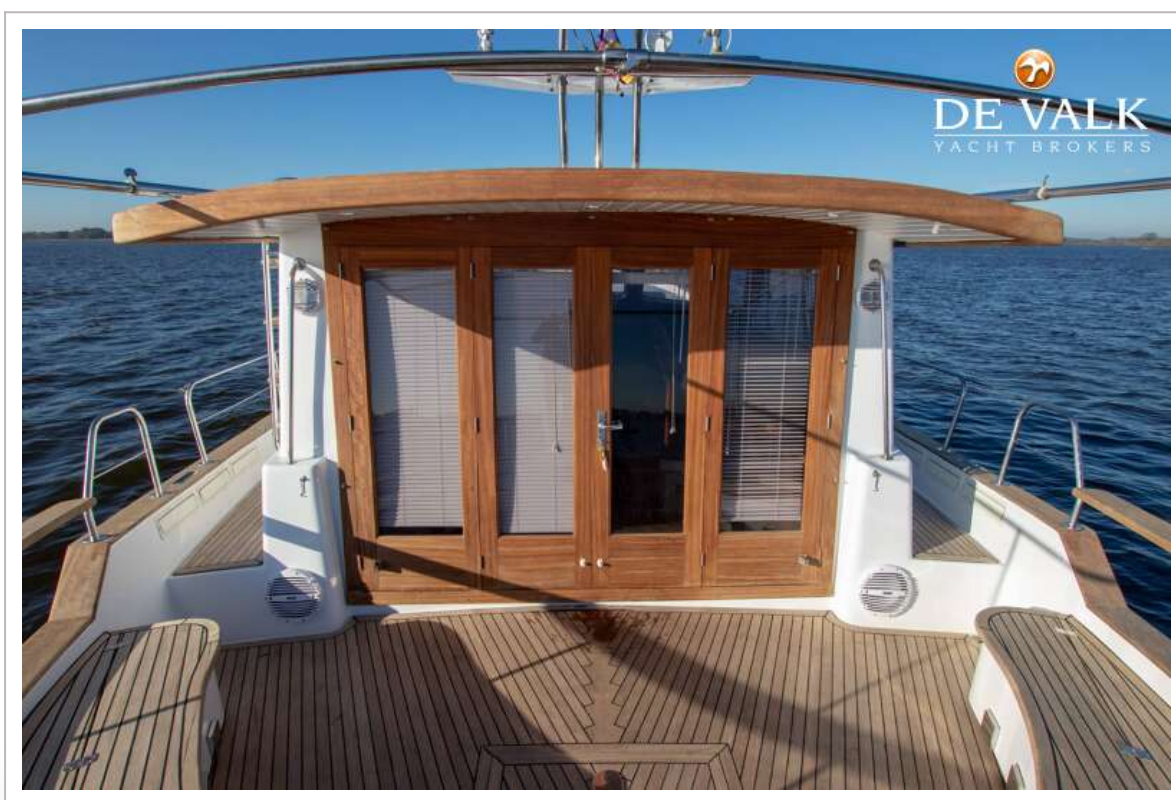


# MENORQUIN 1500 HT

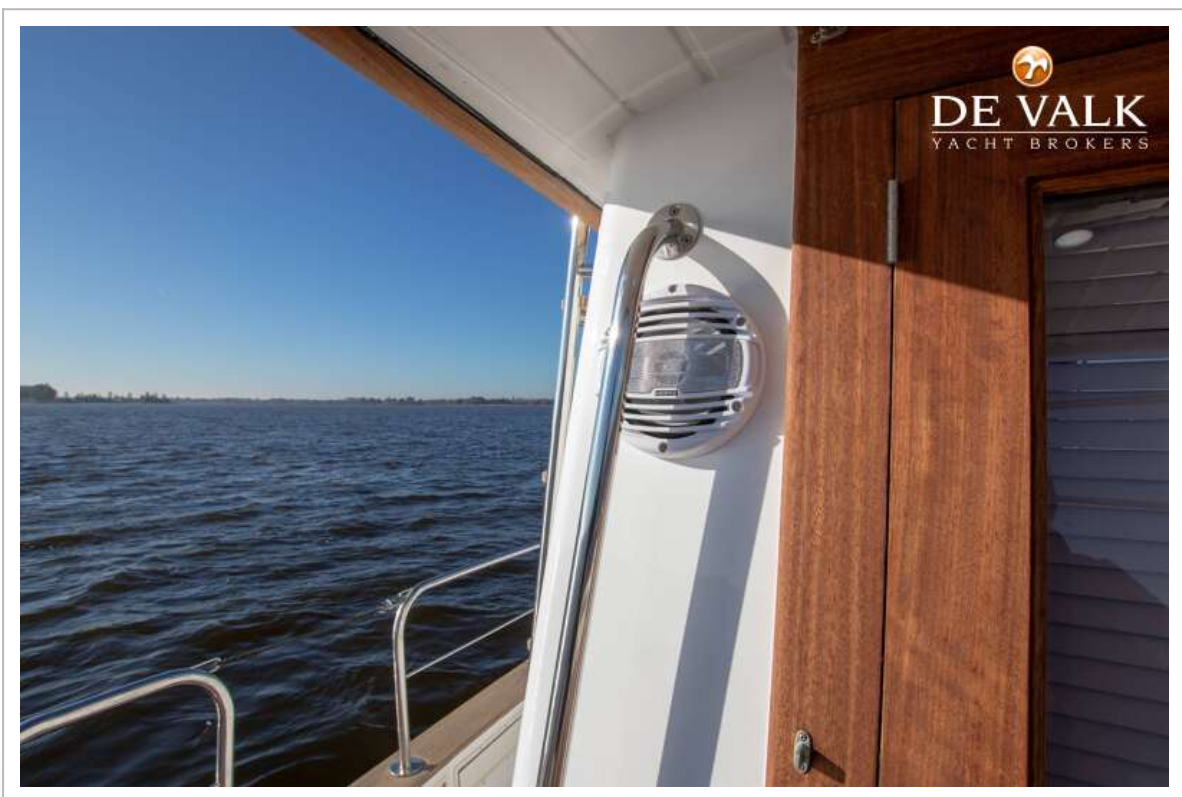




# MENORQUIN 1500 HT

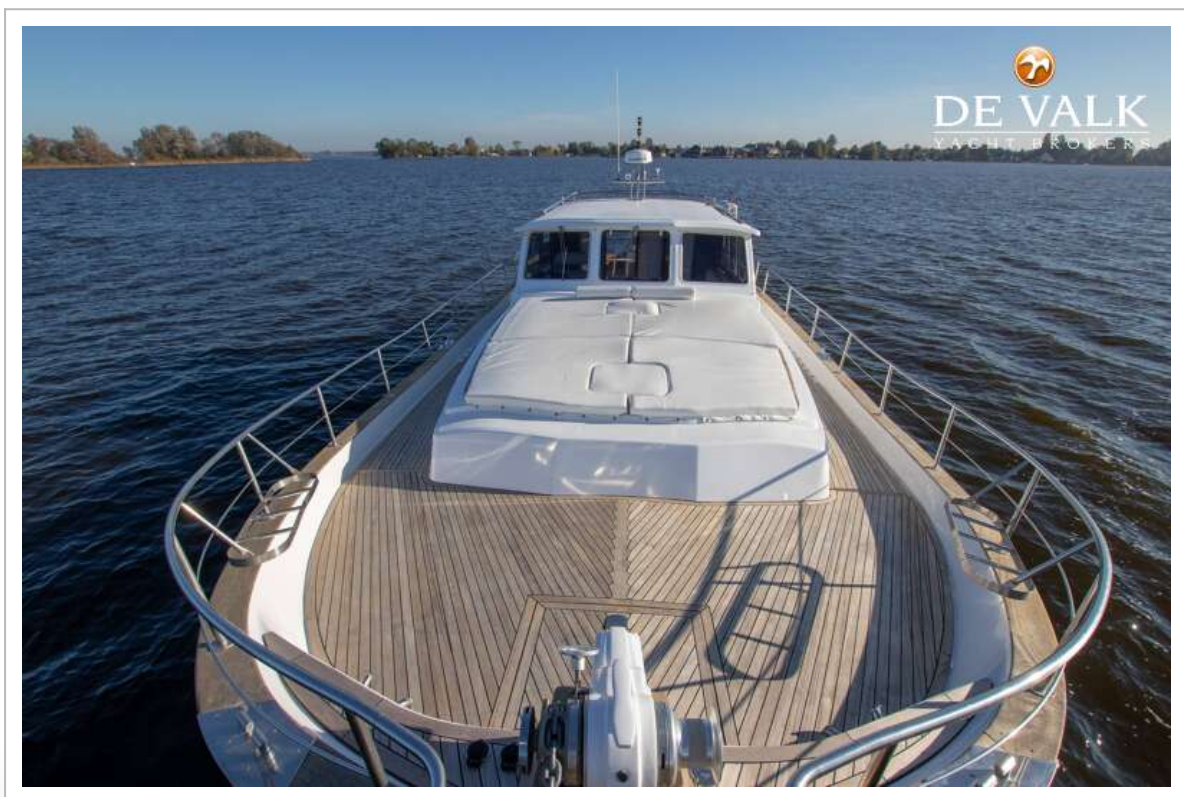
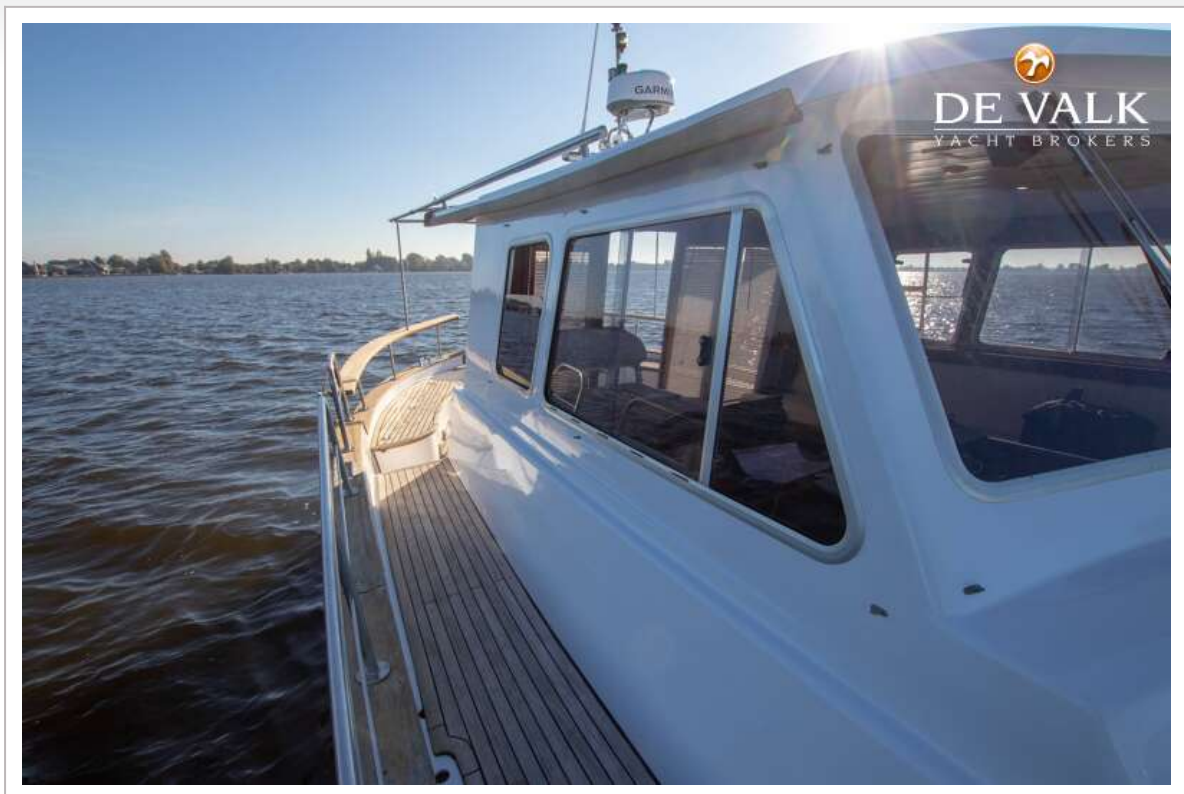


# MENORQUIN 1500 HT

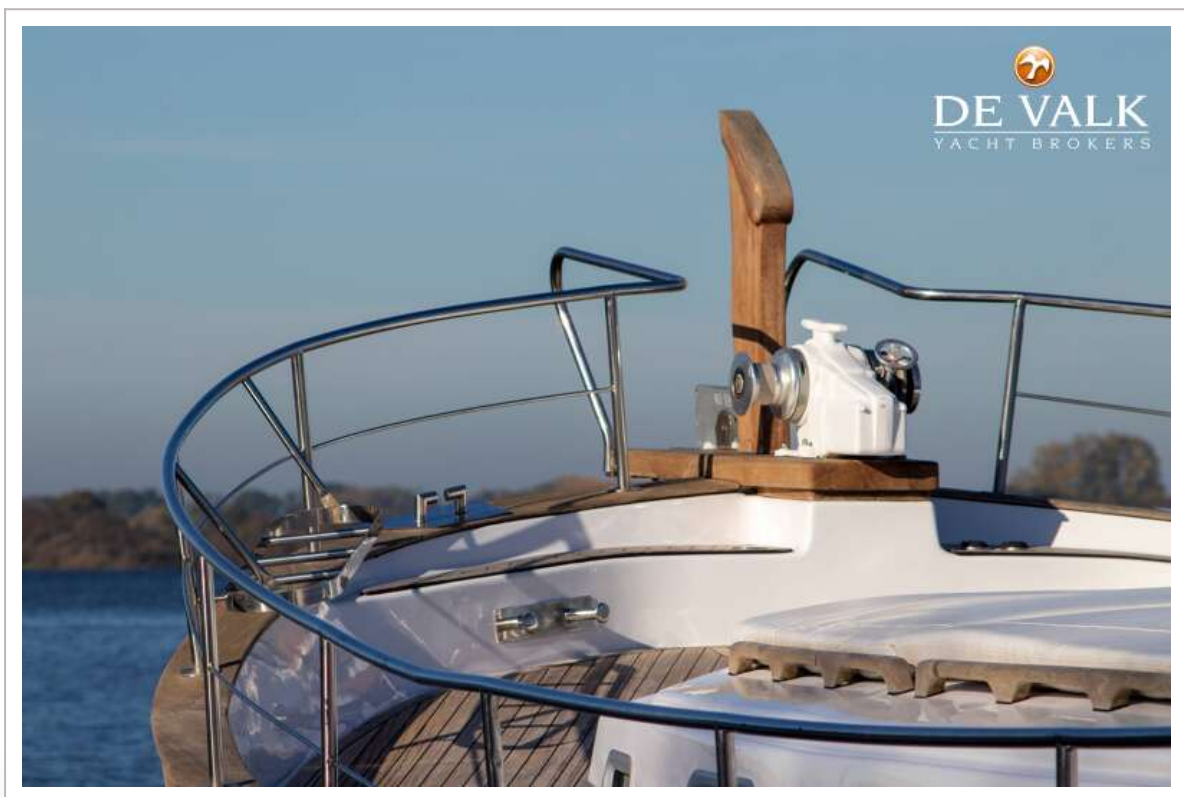




# MENORQUIN 1500 HT



# MENORQUIN 1500 HT

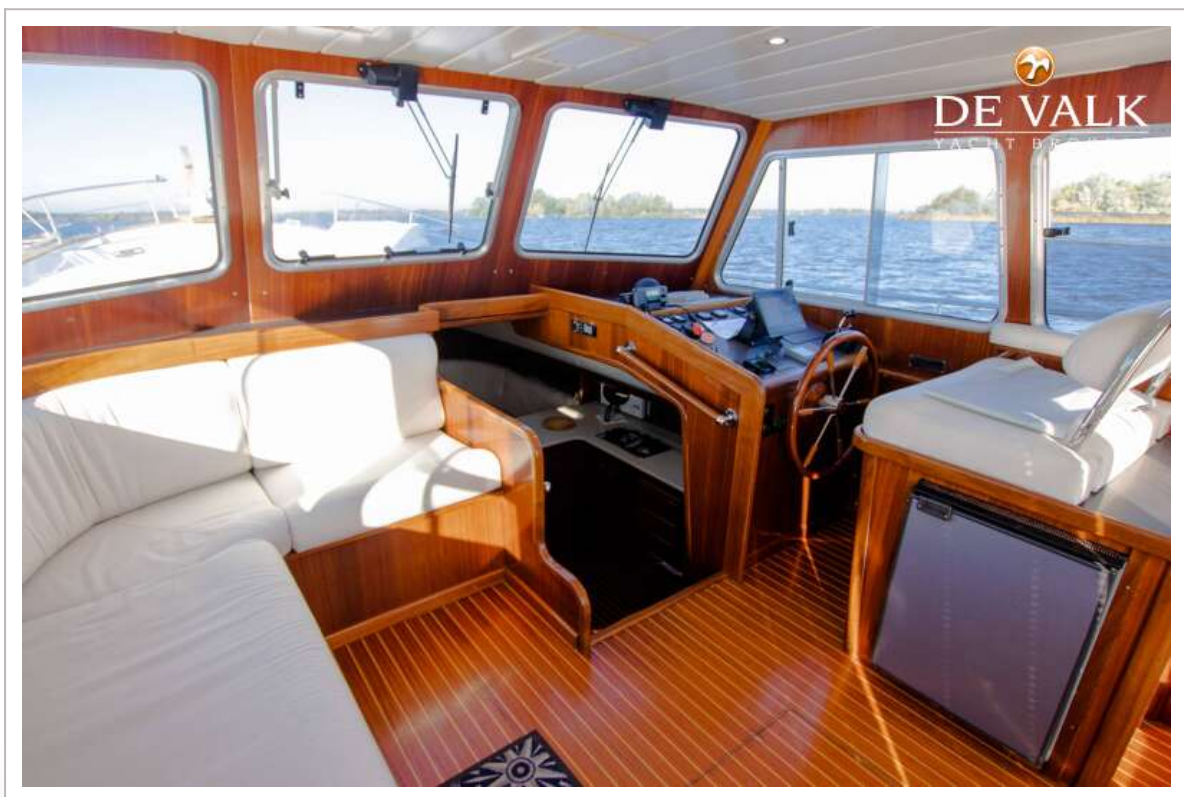




# MENORQUIN 1500 HT

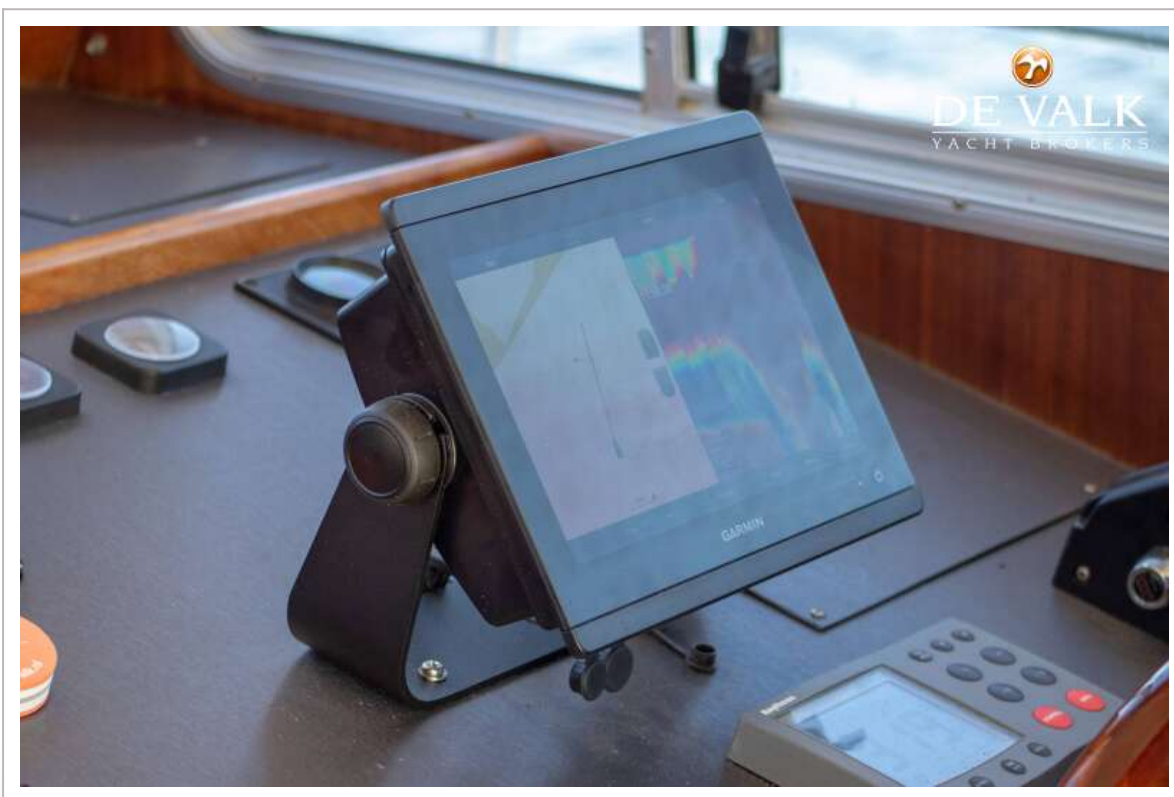
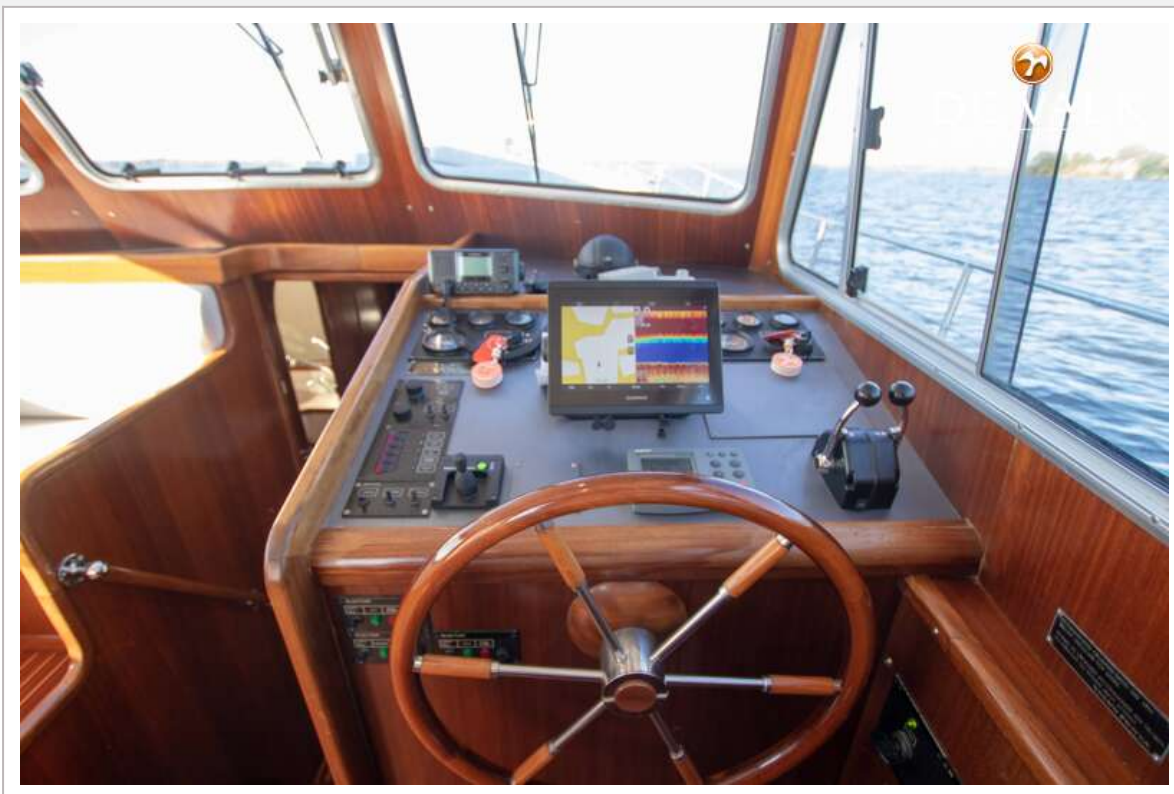


# MENORQUIN 1500 HT





# MENORQUIN 1500 HT



# MENORQUIN 1500 HT

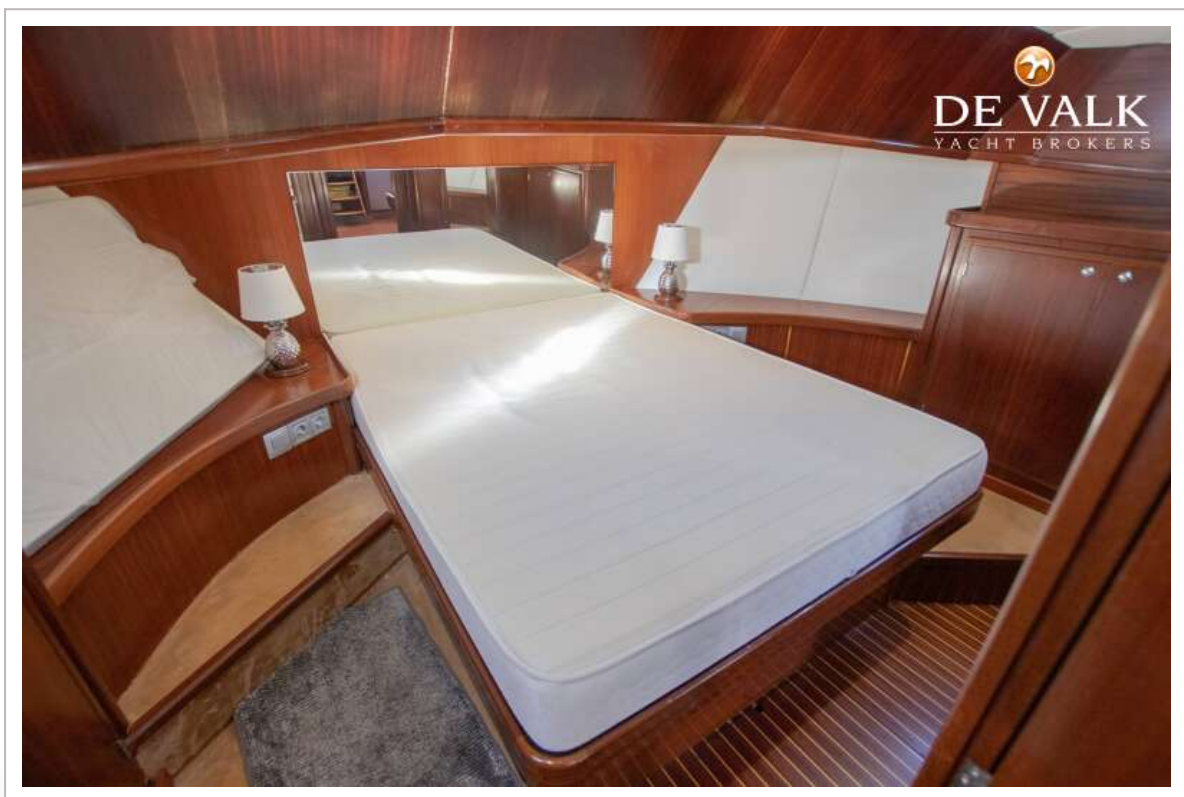




# MENORQUIN 1500 HT

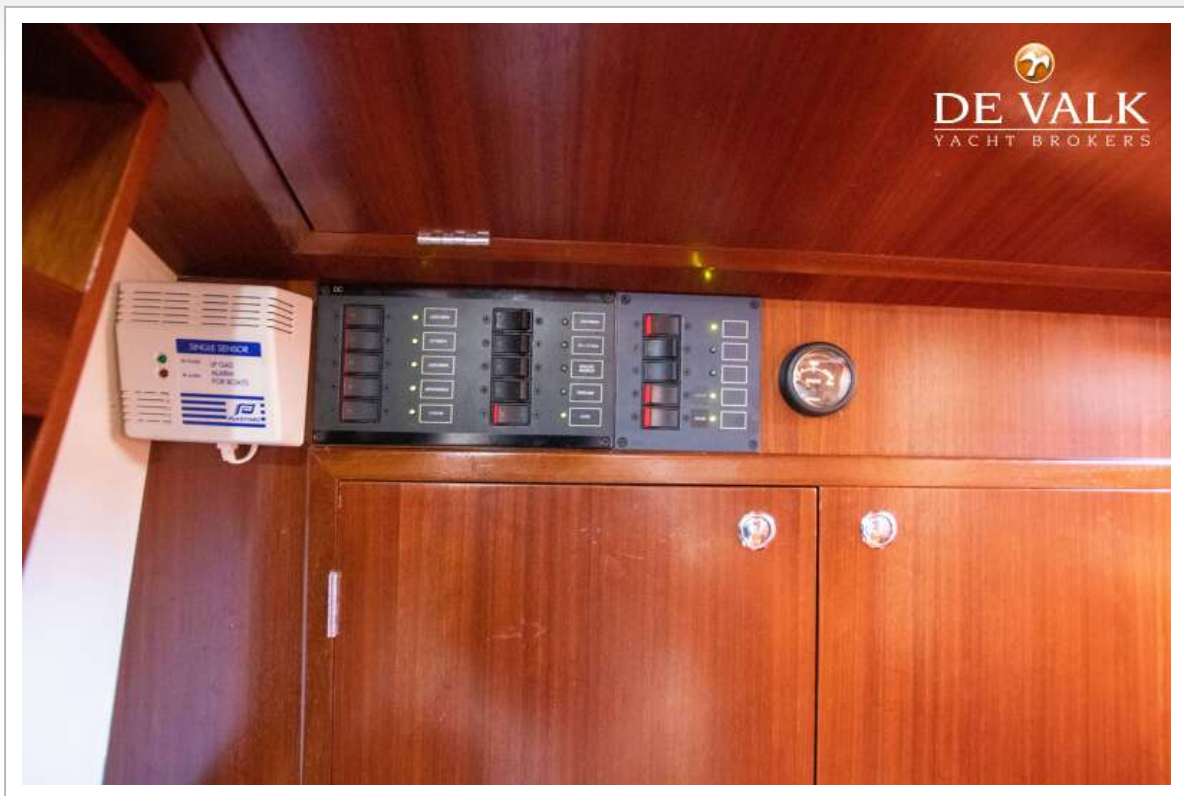


## MENORQUIN 1500 HT





# MENORQUIN 1500 HT



## MENORQUIN 1500 HT

