



LINSSEN GRAND STURDY 470



DE VALK
YACHT BROKERS

LINSSSEN GRAND STURDY 470

BROKER'S COMMENTS

The Linssen Grand Sturdy 470 is a beautiful Dutch-built boat, known for its excellent quality. This Linssen is richly equipped with various options, including stabilizers, two different air-conditioning units in each cabin and central heating. The boat is powered by two Volvo Penta engines of 145 hp each and is equipped with a 7 kW generator. All the maintenance of this vessel is documented and there is a logbook in which everything is carefully recorded.

Mark Hesselmans

SPECIFICATIONS

| | | | |
|---------------------|-----------------------------------|----------------|------------------------------|
| Dimensions | 14.30 x 4.45 x 1.35 (m) | Builder | Linssen Yachts |
| Built | 2004 | Cabins | 2 |
| Material | Steel | Berths | 6 |
| Engine(s) | 2 x Volvo Penta TAMD 41H-B diesel | Hp/Kw | 2 x 145.00 (hp), 106.58 (kw) |
| Asking price | € 285.000 (VAT Paid) | Lying | at sales office |

CONTACT

| | | | |
|---------------------|--|------------------|----------------------|
| Sales office | De Valk Loosdrecht B.V. | Telephone | +31 (0)35 582 90 30 |
| Address | 't Breukeleveense Meentje 6 1231LM Loosdrecht / Wijdmeren NL | E-mail | loosdrecht@devalk.nl |

DISCLAIMER

These particulars are given in good faith as supplied but cannot be guaranteed.



LINSSEN GRAND STURDY 470

GENERAL

| | |
|-----------------------------|----------------------------------|
| Model | LINSSEN GRAND STURDY 470 |
| Type | motor yacht |
| LOA (m) | 14,30 |
| Beam (m) | 4,45 |
| Draft (m) | 1,35 |
| Air draft (m) | 4,90 |
| Air draft min (m) | 3,40 |
| Headroom (m) | 2,00 |
| Year built | 2004 |
| Builder | Linssen Yachts |
| Country | The Netherlands |
| Designer | Anne Elsinga |
| Displacement (t) | 22 |
| CE norm | B |
| Hull material | steel |
| Hull colour | blue |
| Hull shape | multi hard chine |
| Superstructure material | steel |
| Rubbing strake | fender rope |
| Deck material | steel |
| Deck finish | teak |
| Superstructure deck finish | non-skid paint |
| Antifouling (year) | 2023 |
| Window frame | aluminium |
| Window material | tempered glass |
| Deckhatch | 2 |
| Portholes | aluminium 8 |
| Mast can be lowered | electric |
| Fuel tank (litre) | steel 1740 L (2 x 570 + 1 x 600) |
| Level indicator (fuel tank) | VDO |



LINSSEN GRAND STURDY 470

| | |
|-------------------------------------|--|
| Freshwater tank (litre) | polyethylene 880 L |
| Level indicator (freshwater) | VDO |
| Blackwater tank (litre) | polyethylene 220 L |
| Level indicator (blackwater) | Wema |
| Blackwater tank extraction | deck extraction + pump |
| Wheel steering | hydraulic |
| Outside helm position | hydraulic |
| Emergency tiller | yes |
| More info on paintwork | New hull paint 2021 with AWLGRIP paint |

ACCOMMODATION

| | |
|--------------------------------------|--|
| Cabins | 2 |
| Berths | 6 |
| Interior | cherry |
| Floor | teak and holly |
| Aft deck | yes |
| Saloon | yes |
| Heating | central heating Eberspacher |
| Air-conditioning | reverse cycle airco 2 (2019 + 2022) webasto + Climma |
| Dinette | yes |
| Dinette to convert into berth | yes |
| Opening door to aft deck | yes |
| Galley | yes |
| Countertop | corian |
| Sink | stainless steel |
| Cooker | ceramic Siemens 4-burner |
| Oven | Steam Oven |
| Extractor | yes |
| Microwave/oven combi | Siemens |
| Fridge | (Coolmatic with freezer compartment) 1x Coolmatic & 1x Engel |
| Hot water system | 220V + engine Isotherm |



LINSSEN GRAND STURDY 470

| | |
|-----------------------|--------------------------------|
| Water pressure system | electrical |
| Kettle | yes |
| Coffee maker | Philips |
| Owners cabin | French bed Neptune mattresses |
| Bed length (m) | 2,00 |
| Wardrobe | hanging/drawers/shelves |
| Bathroom | en suite |
| Toilet | en suite |
| Toilet system | electric Bemis |
| Wash basin | in the bathroom |
| Shower | en suite |
| Guest cabin 1 | French bed Neptune Matresses |
| Bed length (m) | 2,00 |
| Wardrobe | shelves |
| Bathroom | en suite |
| Toilet | en suite |
| Toilet system | electric Jabsco |
| Wash basin | in the bathroom |
| Shower | en suite |
| Washing machine | SOBA |
| Extra info | Cushions salon changed in 2016 |

MACHINERY

| | |
|--------------------|-------------|
| No of engines | 2 |
| Make | Volvo Penta |
| Type | TAMD 41H-B |
| HP | 145 |
| kW | 106.58 |
| Fuel | diesel |
| Year installed | 2004 |
| Maximum speed (kn) | 10 |



LINSSEN GRAND STURDY 470

| | |
|---------------------------------|--|
| Cruising speed (kn) | 8-9 |
| Consumption (l/hr) | 10 |
| Engine hours | 3075 |
| Engine cooling system | freshwater heat exchanger |
| Drive | shaft |
| Shaft seal | yes |
| Engine controls | bowden cable Morse |
| Gearbox | hydraulic ZF Hurth |
| Bowthruster | electric Vetus 160 KGF |
| Sternthruster | electric Vetus 160 KGF |
| Exhaust | watercooled |
| Thrust bearing | Phython |
| Propeller type | fixed |
| Propeller blades | 5-bladed |
| Propeller shaft material | stainless steel |
| Shaft lubrication | water |
| Electric bilge pump | yes |
| Generator | silent separator Onan 7 Kva |
| Running hours generator | 498 |
| Batteries | 2021 (by linssen) |
| Start battery | 8x Excide 12V 50Ah |
| Service battery | 5x Victron 12V 110Ah |
| Bowthruster battery | yes |
| Sternthruster battery | yes |
| Battery monitor | Linssen |
| Battery charger | Mastervolt Mass 12/60 |
| Inverter | Mastervolt Mass Sine 12/2000 |
| Diode battery combiners | yes |
| Shorepower | with cable |
| Stabilizers | fin Najad Multisea II serviced in 2023 |
| Extra info | 2x Separ fuel filter |



NAVIGATION

| | |
|------------------------|------------------------|
| Electric compass | Raymarine ST6002 |
| Depth sounder/log | Raymarine ST60 tridata |
| VHF | Raymarine Ray 240E |
| Autopilot | Raymarine ST6002 |
| Rudder angle indicator | Raymarine ST60 |
| Radar/GPS/plotter | Raymarine C120W |
| Wifi antenna | yes |
| AIS transceiver | Raymarine |
| Navigation lights | yes |
| Searchlight | Jabsco |

EQUIPMENT

| | |
|------------------|-----------------------------------|
| Fixed windscreen | yes |
| Sprayhood | yes |
| Cockpit cover | yes |
| Bimini | 2021 |
| Cockpit cushions | yes |
| Cockpit table | yes |
| Cockpit chairs | yes |
| Bathing platform | yes |
| Boarding ladder | stainless steel |
| Gangway | aluminum & manual |
| Deck shower | yes |
| Anchor | yes |
| Anchor chain | yes |
| Windlass | electrical 2022 |
| Deck wash | yes |
| Dinghy | inflatable Lodestar RIB open 2.9m |
| Outboard | Electric Torqeedo 1113 in 2022 |
| Davits | stainless steel Wittall |

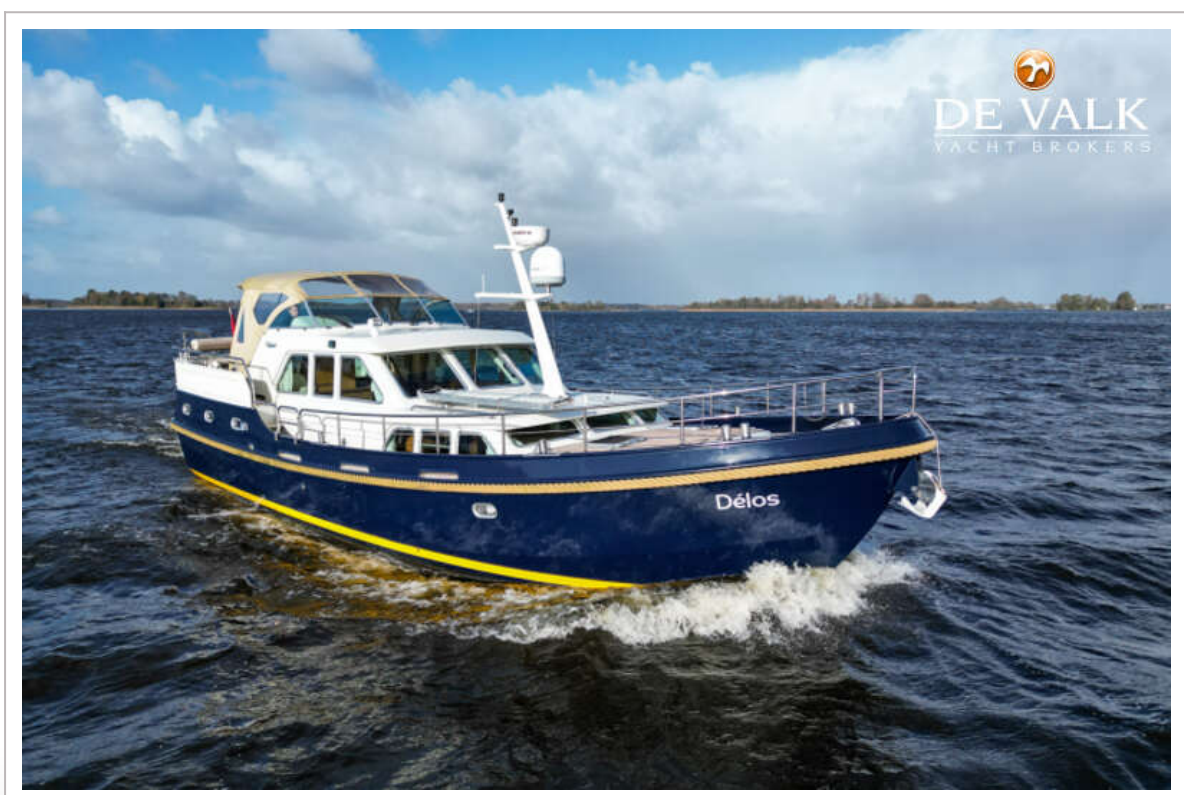


LINSSEN GRAND STURDY 470

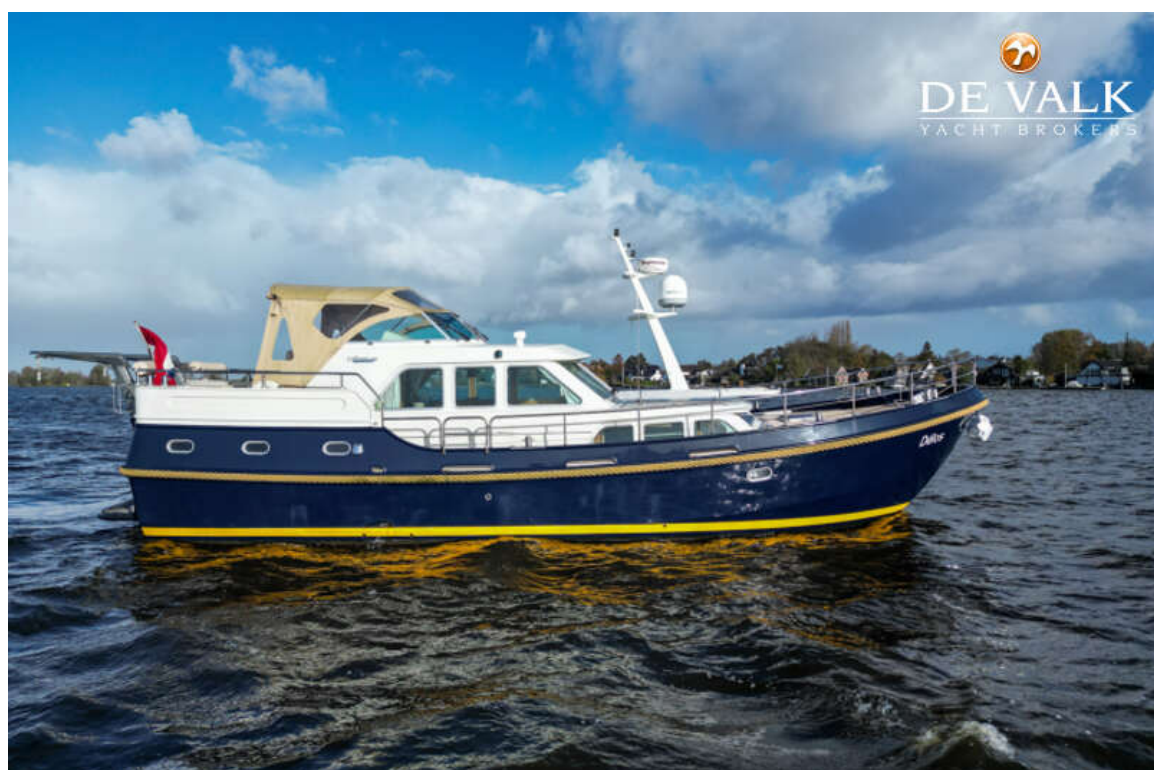
| | |
|-----------------------------------|--|
| Davits controls | electrical |
| Sea railing | stainless steel |
| Grab rail (superstructure) | stainless steel |
| Railing side opening gates | 3x |
| Wiper | 2x |
| Horn | air pressure |
| Fenders | yes |
| Mooring lines | yes |
| TV | 2x Sharp |
| TV receiver | Technisat (north Europa) and FireTvStick (south Europa) |
| TracVision ball | Tracvision G4 |
| Radio-cd player | In Bose soundsystem |
| DVD player | In Bose soundsystem |
| Surround Sound System | 2x Bose soundsystem |
| Speakers in salon | yes |
| Speakers in cabin | yes |
| Clock - barometer | yes |
| Extra info | Wifi receiver 2021 |



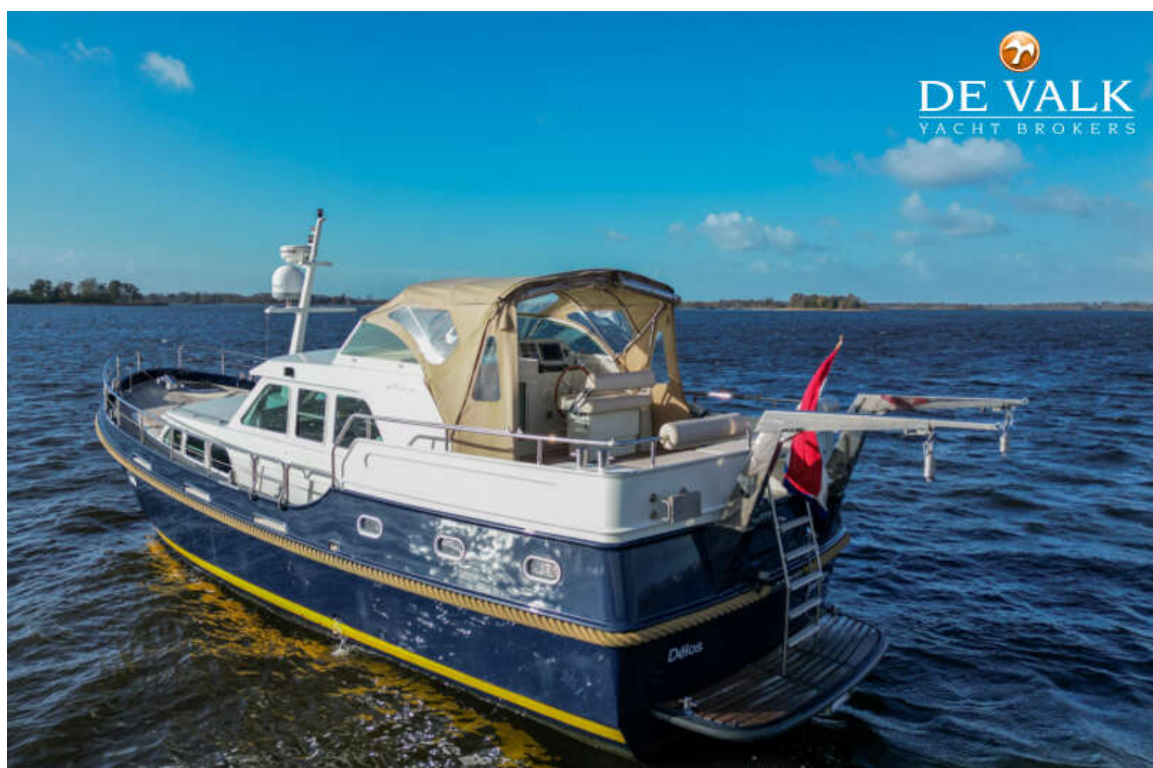
LINSSEN GRAND STURDY 470



LINSSEN GRAND STURDY 470



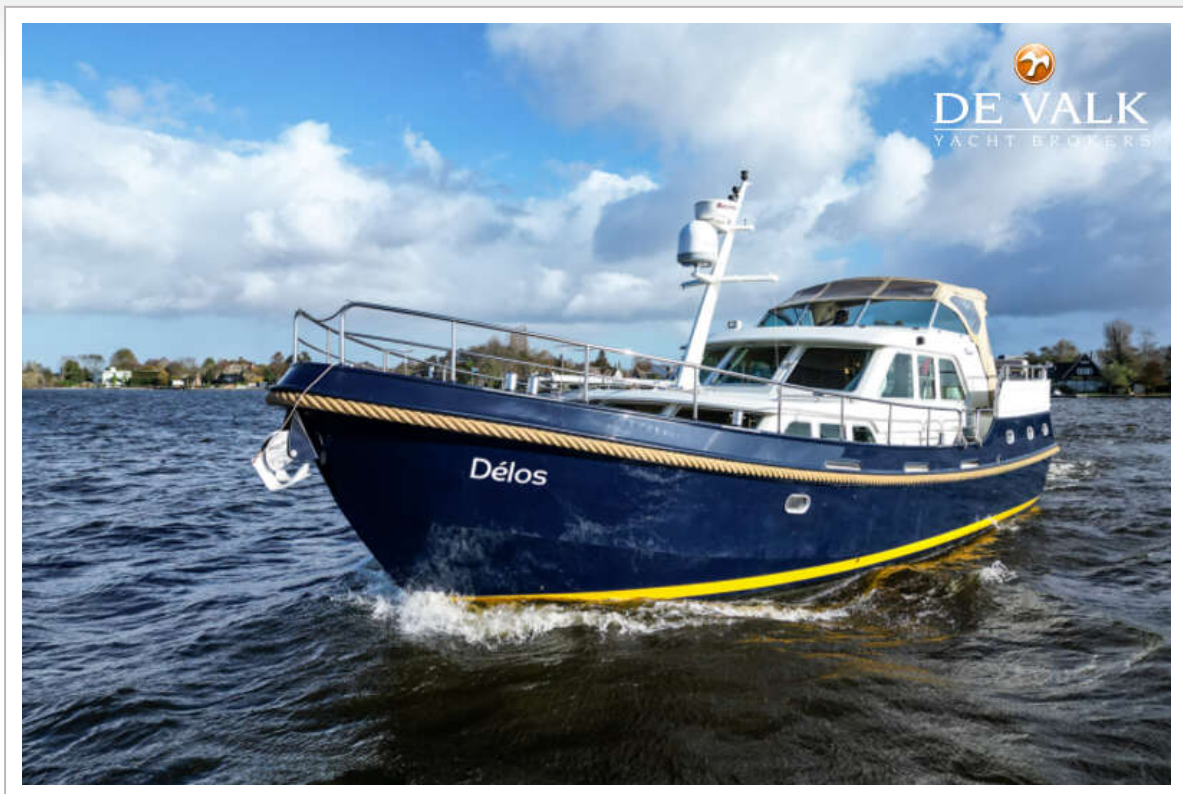
LINSSEN GRAND STURDY 470



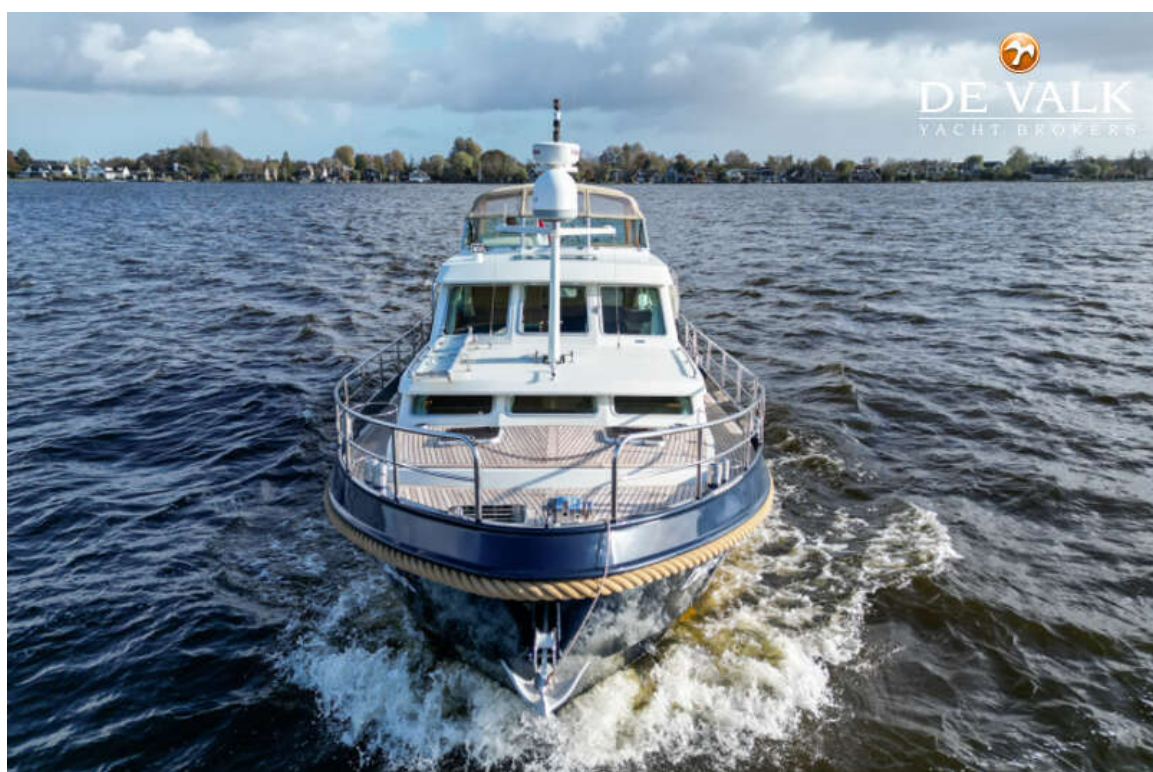
LINSSEN GRAND STURDY 470



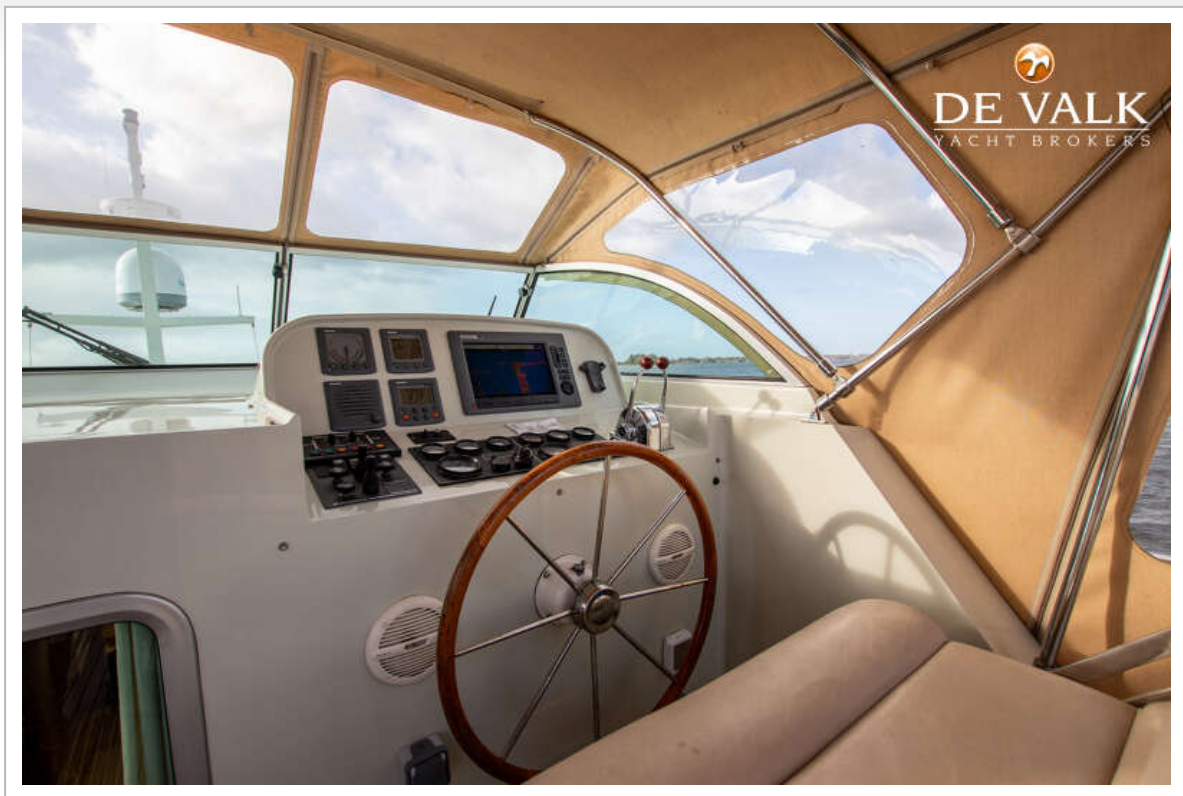
LINSSEN GRAND STURDY 470



LINSSEN GRAND STURDY 470



LINSSEN GRAND STURDY 470



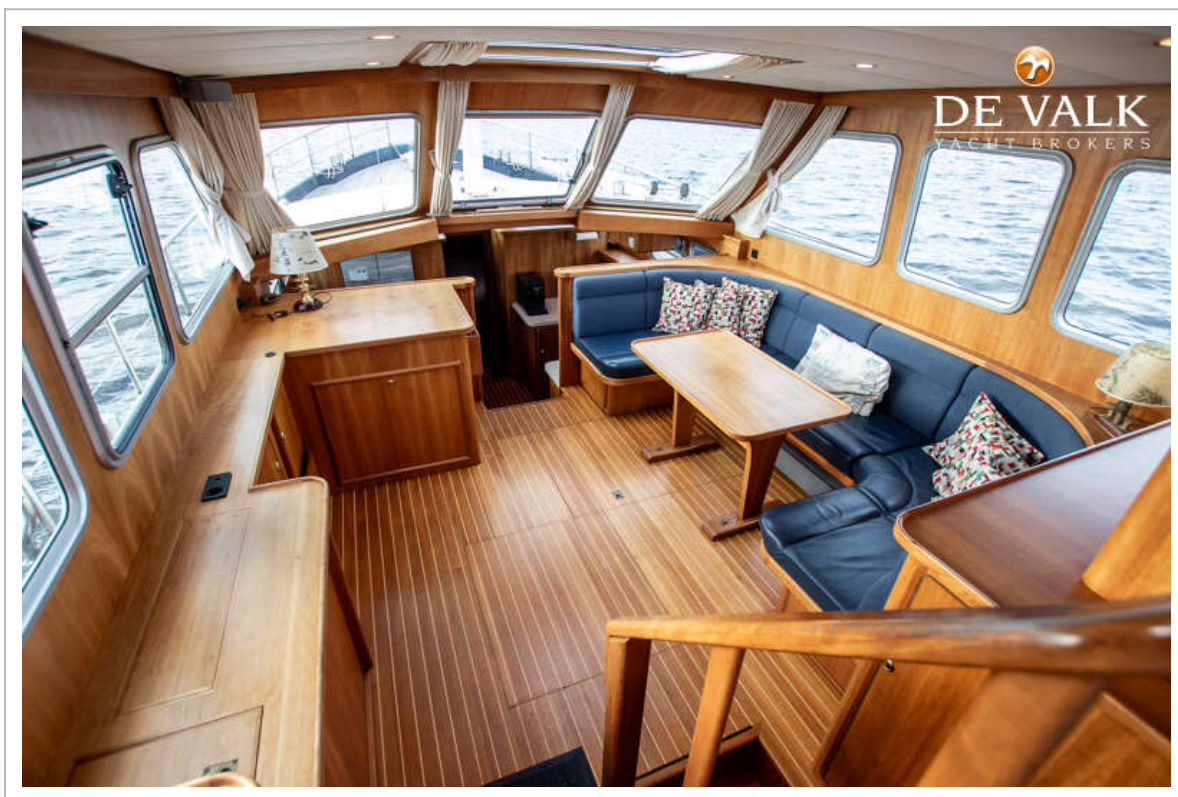
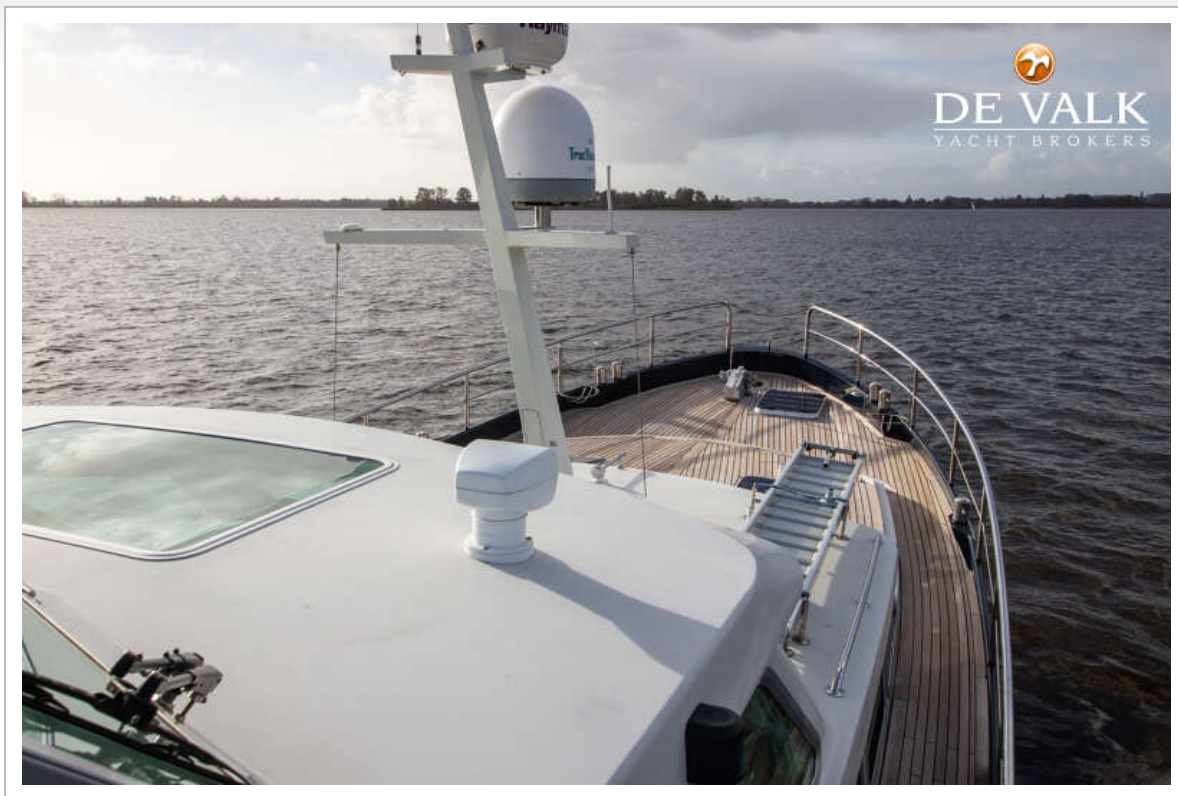
LINSSEN GRAND STURDY 470



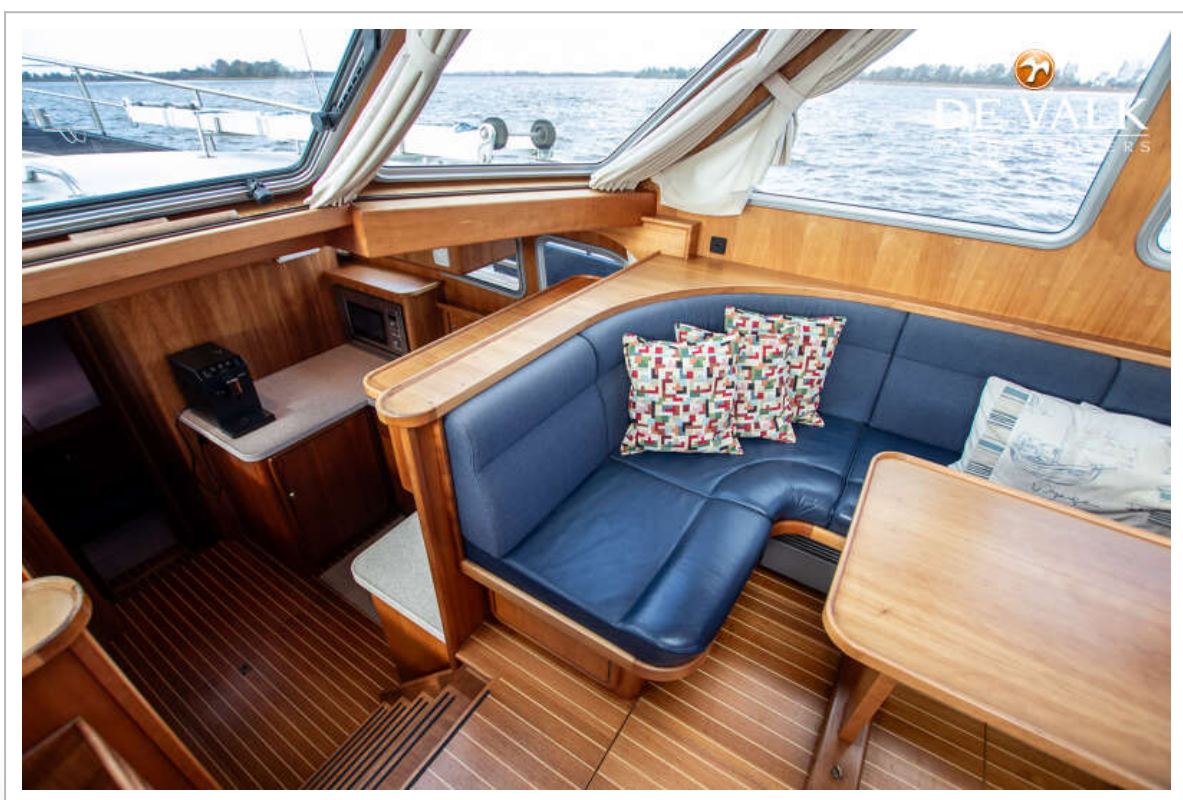
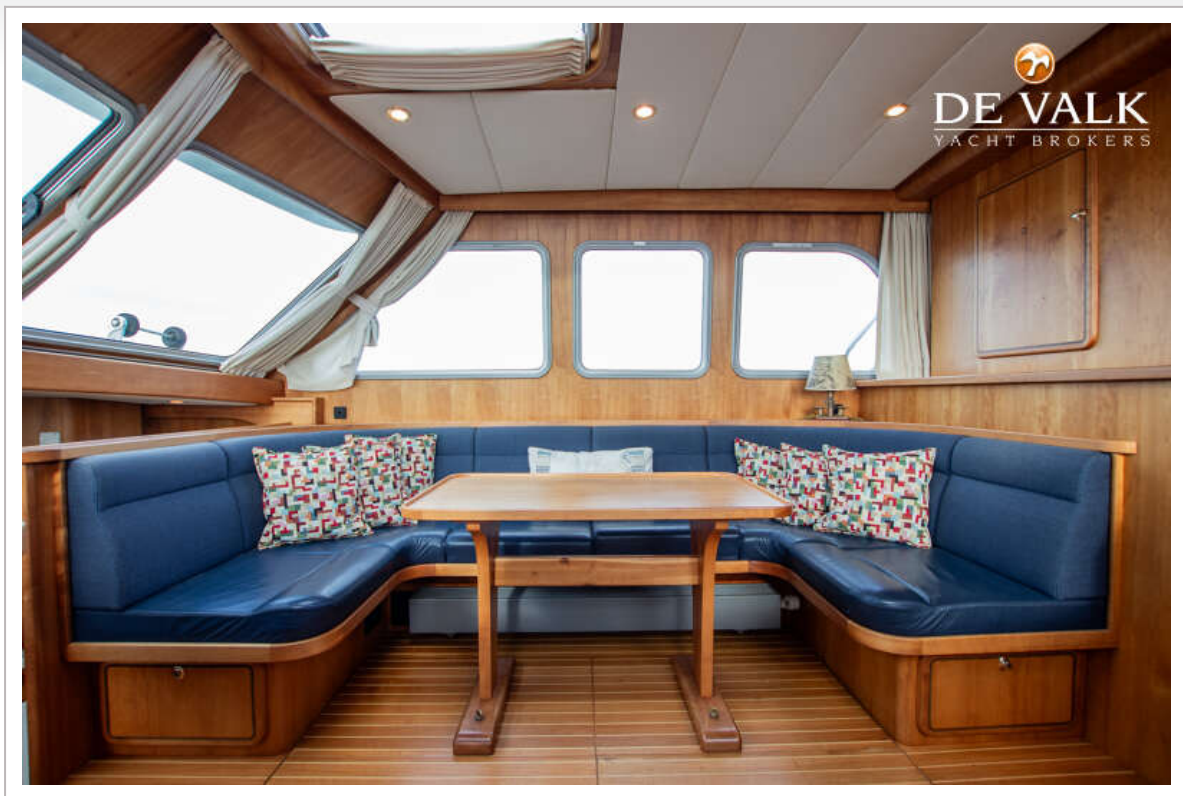
LINSSEN GRAND STURDY 470



LINSSEN GRAND STURDY 470



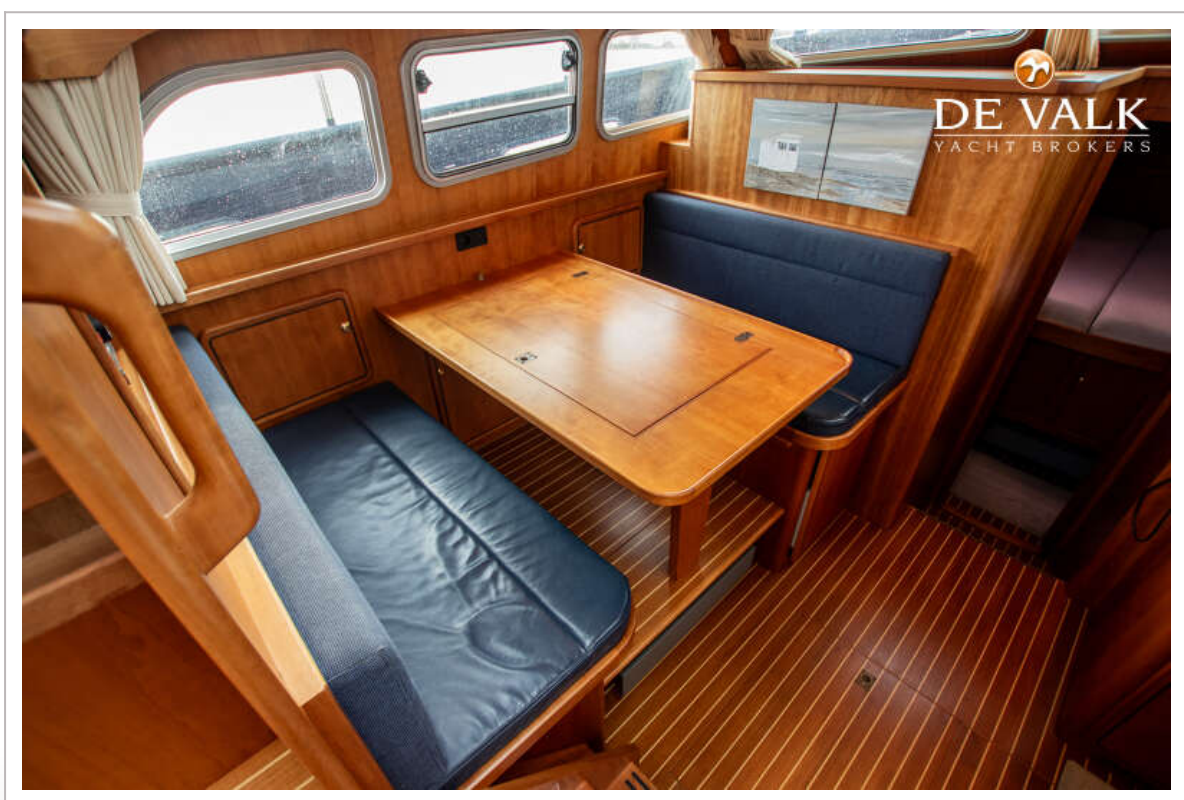
LINSSEN GRAND STURDY 470



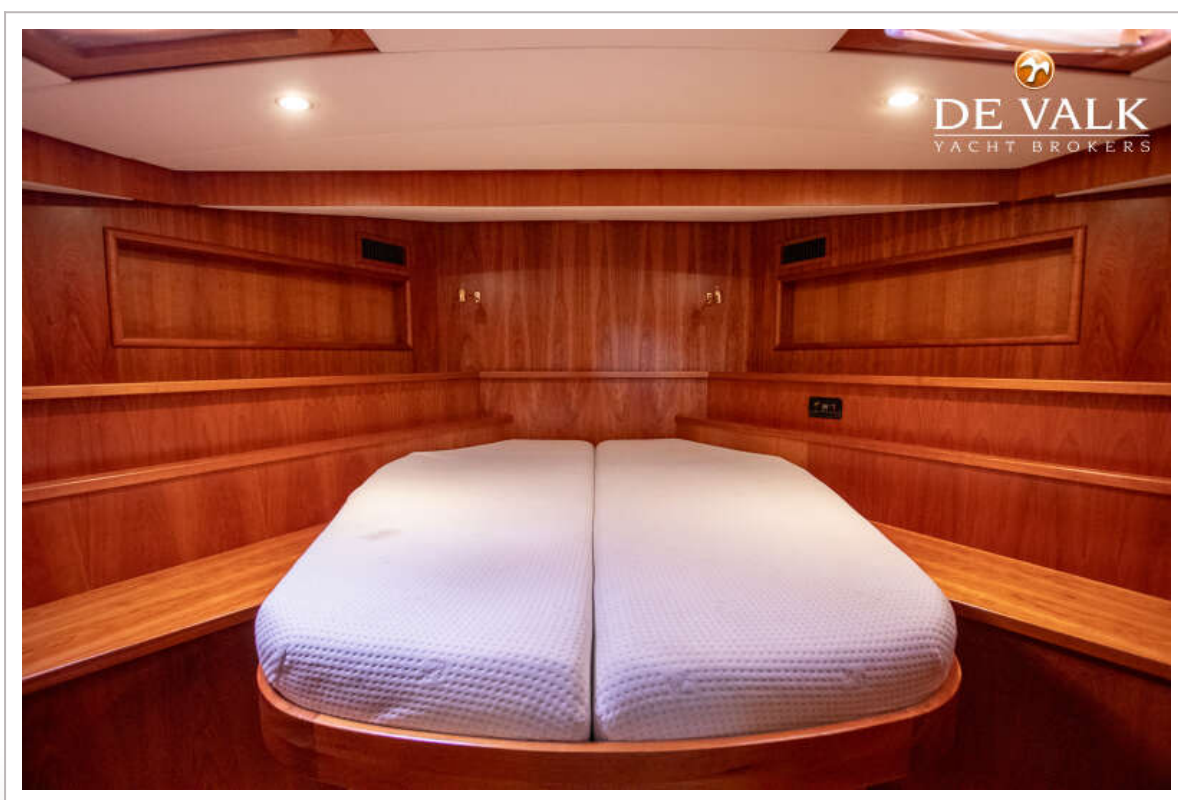
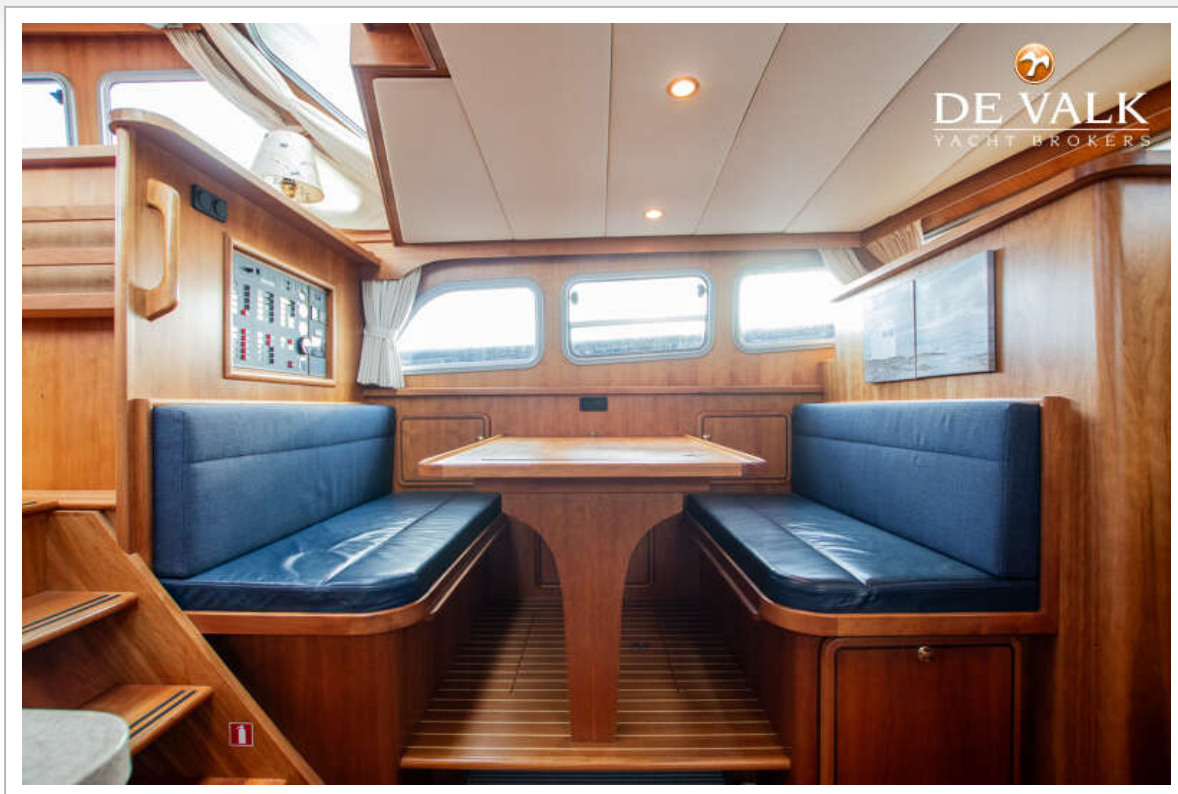
LINSSEN GRAND STURDY 470



LINSSEN GRAND STURDY 470



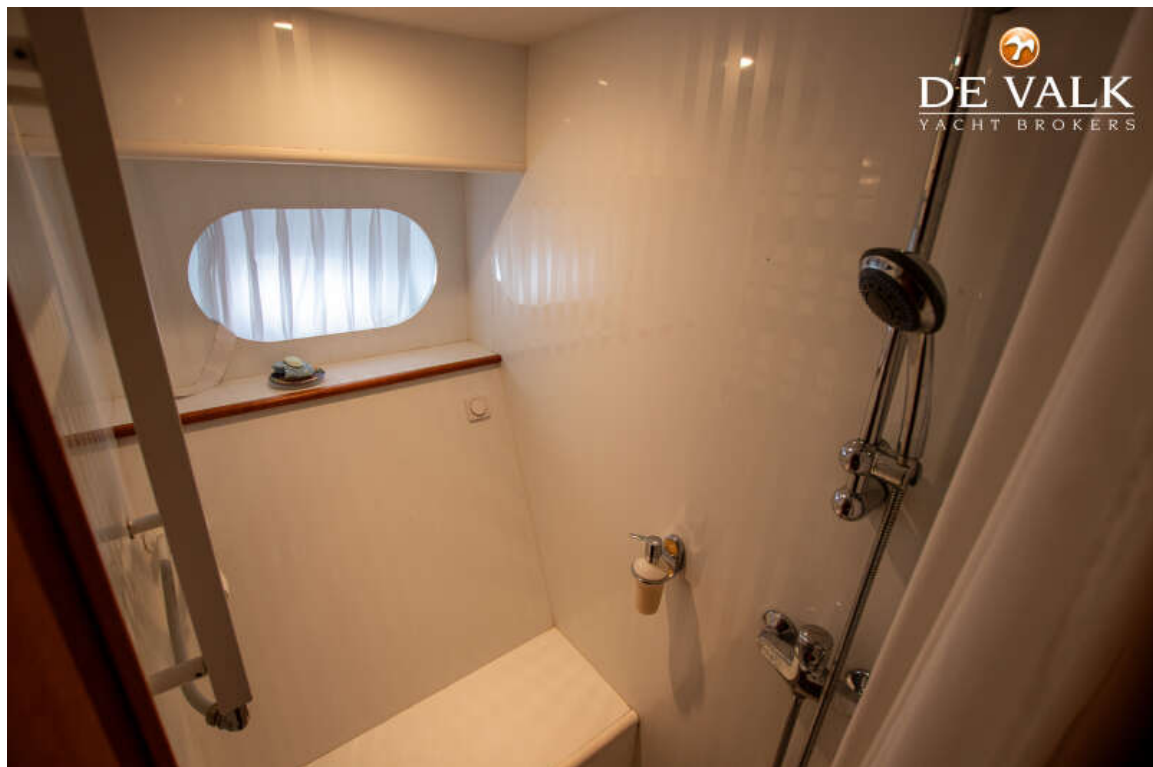
LINSSEN GRAND STURDY 470



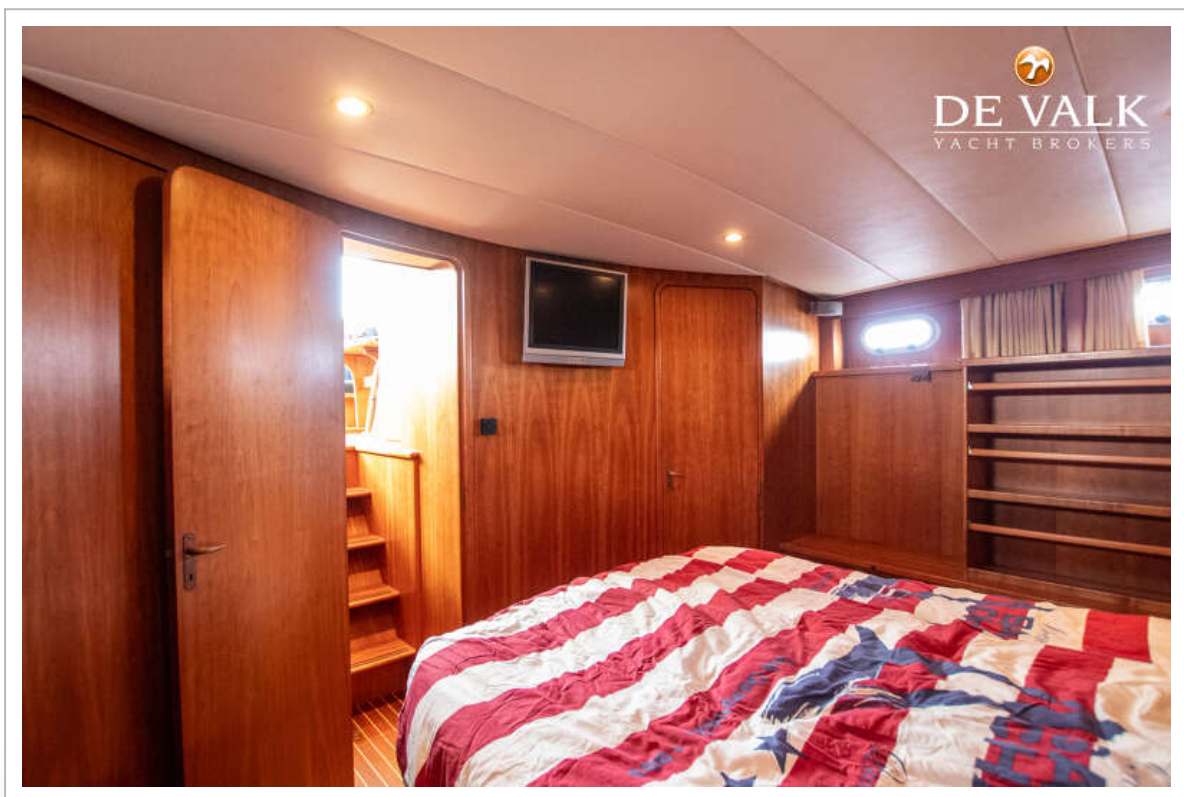
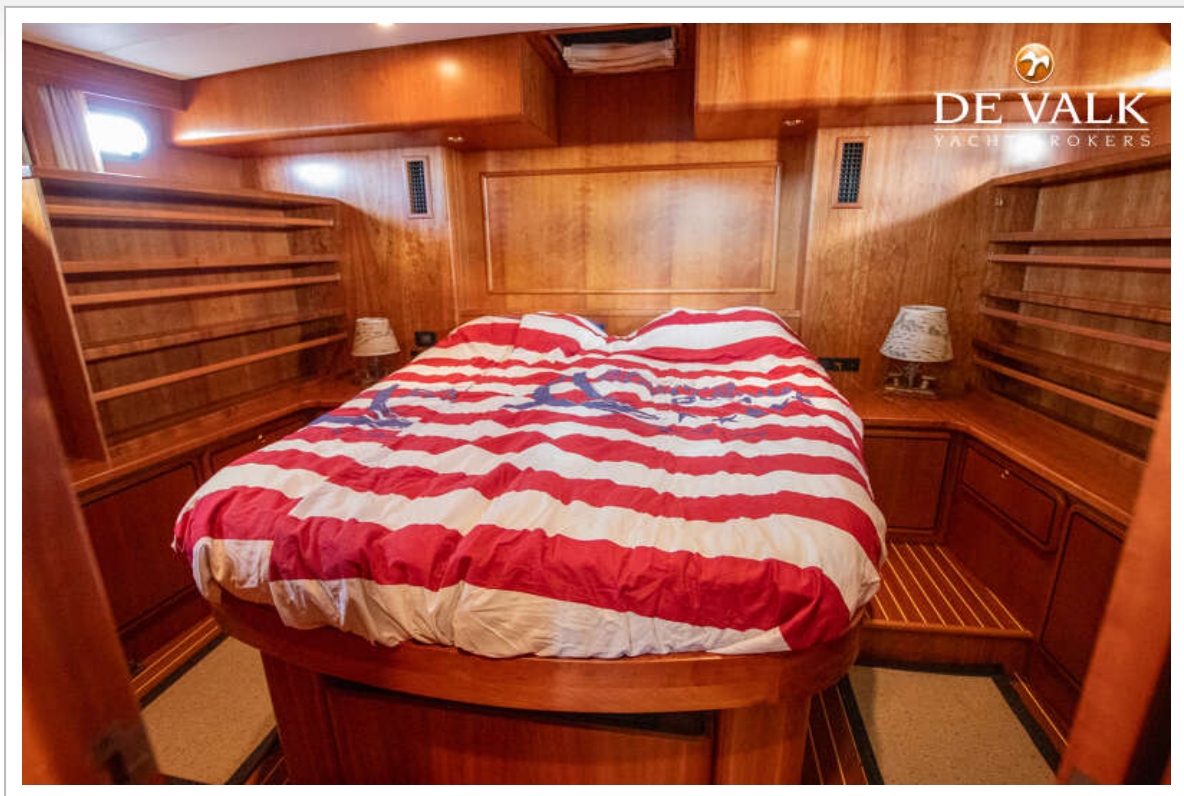
LINSSEN GRAND STURDY 470



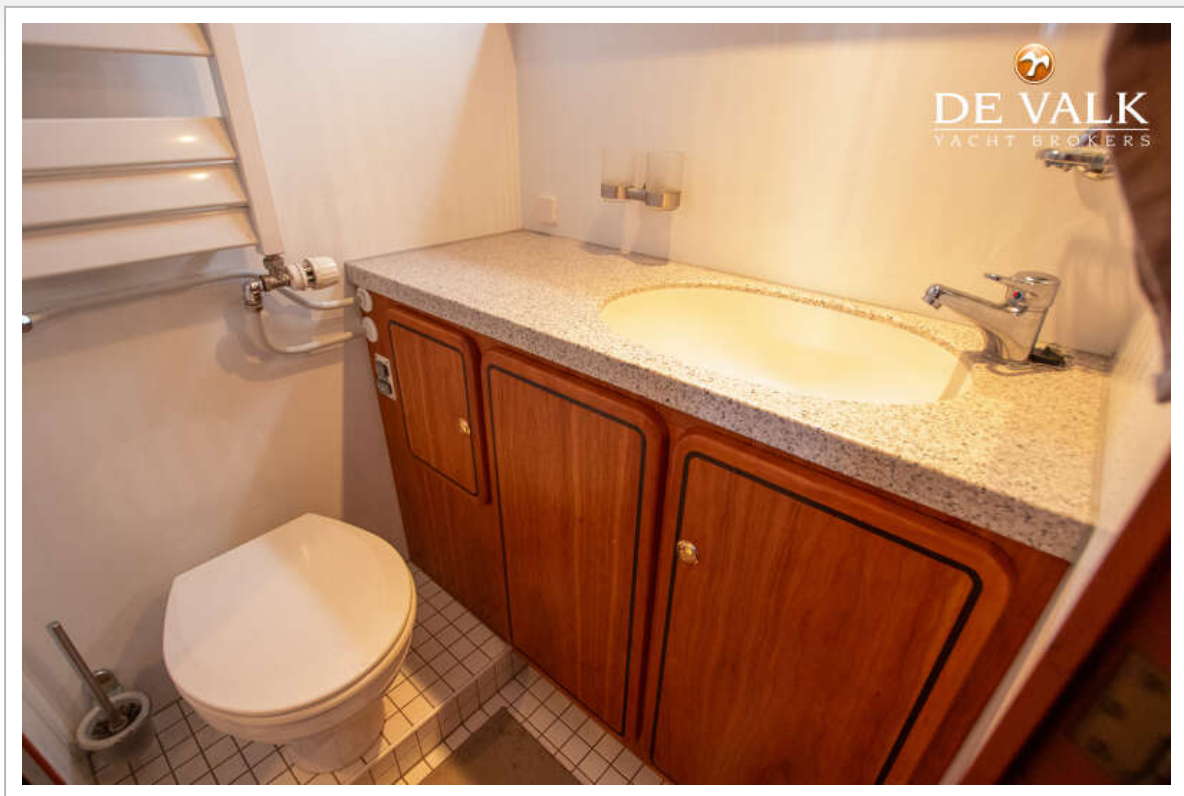
LINSSEN GRAND STURDY 470



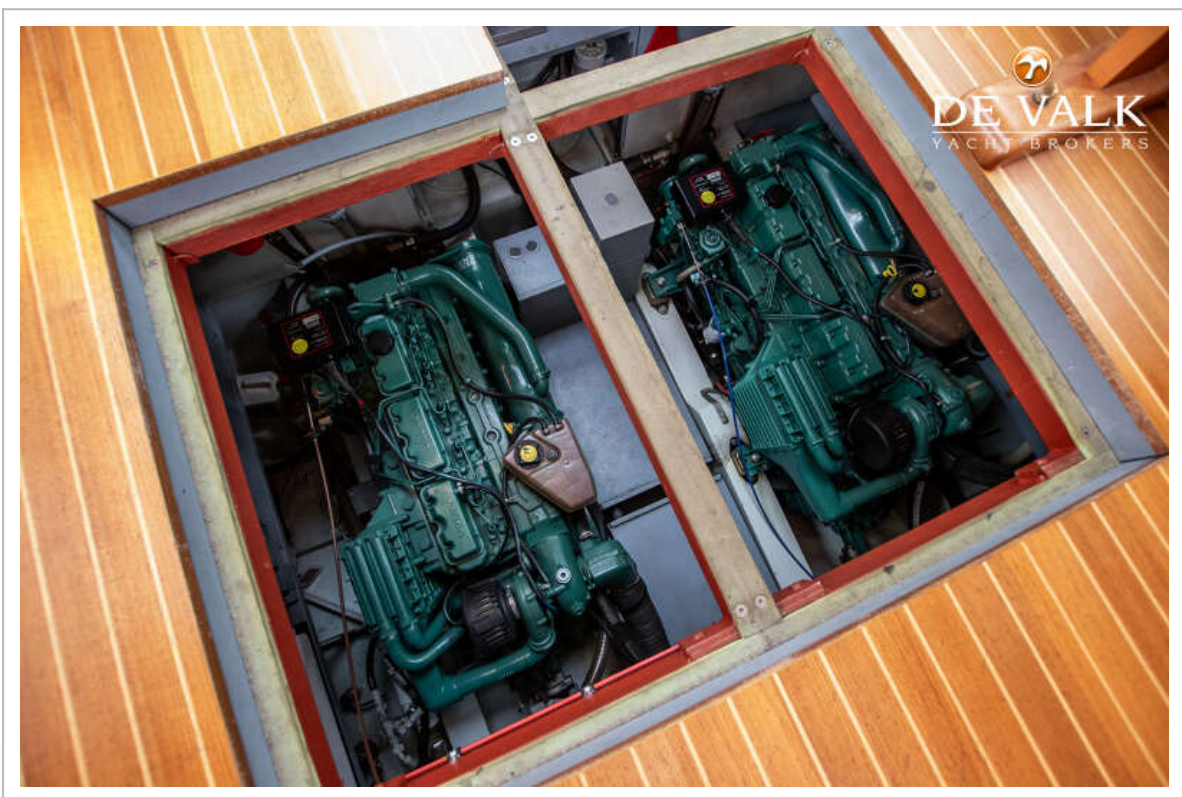
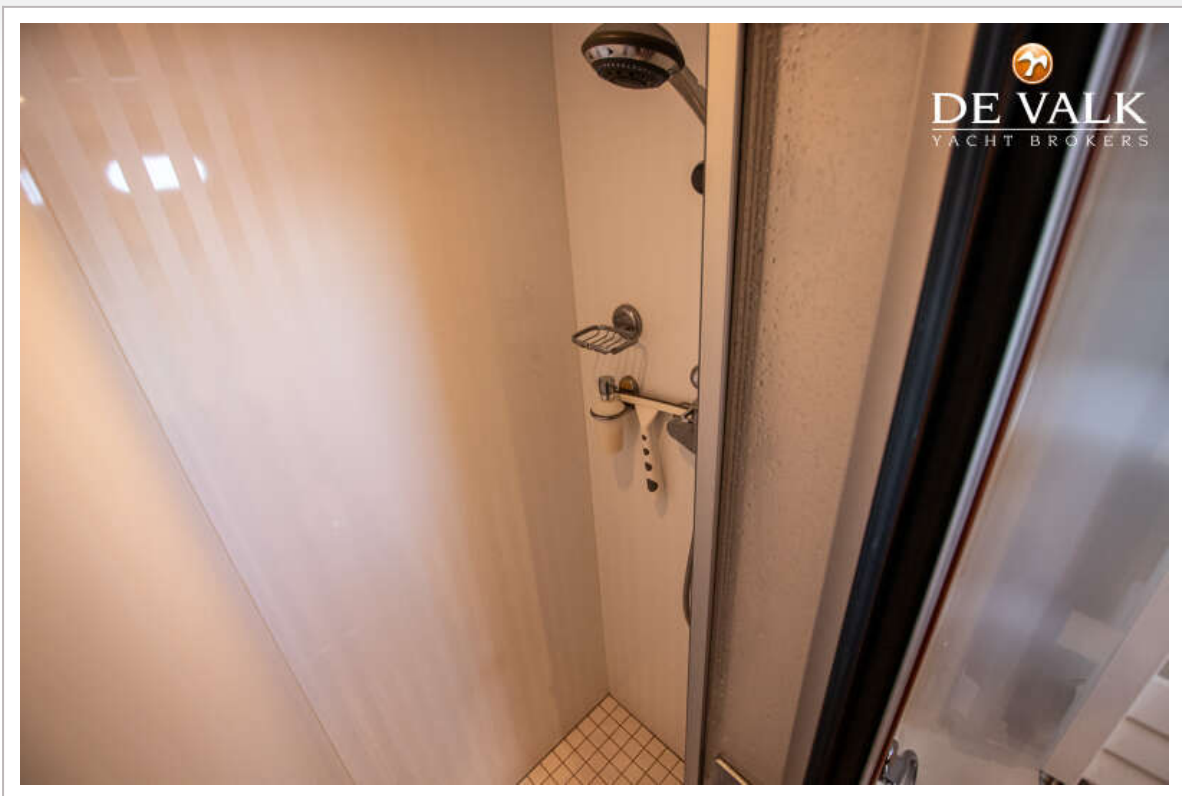
LINSSEN GRAND STURDY 470



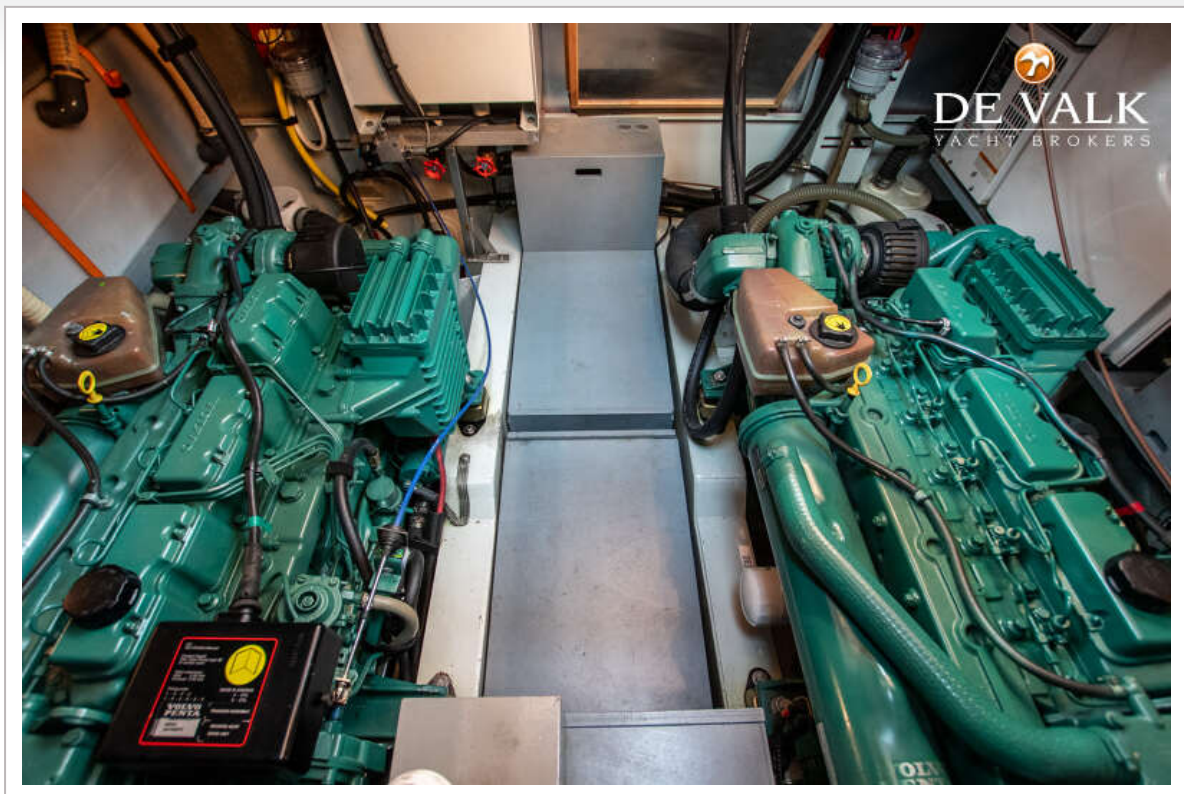
LINSSEN GRAND STURDY 470



LINSSEN GRAND STURDY 470



LINSSEN GRAND STURDY 470



LINSSEN GRAND STURDY 470



