



BAVARIA 36


DE VALK
YACHT BROKERS

BAVARIA 36

BROKER'S COMMENTS

Bavaria 36 is a friendly and family sailing boat. This yacht is the quiet force of Bavaria fleet: easy to manoeuvre and maintain. BAV 36 has been very well maintained and she is in a very good price.

Sofia Iliia-Salvanou

SPECIFICATIONS

Dimensions	11.40 x 3.60 x 1.65 (m)	Builder	BAVARIA YACHTBAU GmbH
Built	2003	Cabins	2
Material	GRP	Berths	5
Engine(s)	1 x VOLVO Penta MD2030 DBT diesel	Hp/Kw	29.00 (hp), 21.32 (kw)
Asking price	sold (VAT)	Lying	at sales office

CONTACT

Sales office	De Valk Corfu	Telephone	(+30) 266 111 8095
Address	New Port of Corfu, near Gouvia Marina 490 83 Corfu GR	E-mail	corfu@devalk.nl

DISCLAIMER

These particulars are given in good faith as supplied but cannot be guaranteed.



GENERAL

Model	BAVARIA 36
Type	sailing yacht
LOA (m)	11,40
Beam (m)	3,60
Draft (m)	1,65
Year built	2003
Builder	BAVARIA YACHTBAU GmBH
Country	Germany
Displacement (t)	5,7
Ballast (tonnes)	cast iron
Gross tonnage	6,7
Net tonnage	5,7
CE norm	A
Hull material	GRP
Hull colour	white
Hull shape	round-bilged
Keel type	fin keel with bulb
Superstructure material	GRP
Rubbing strake	aluminum
Deck material	GRP
Deck finish	non-skid moulded in
Superstructure deck finish	non-skid moulded in
Cockpit deck finish	teak
Antifouling (year)	2021
Window frame	aluminium
Window material	Lewmar Acryl glas
Deckhatch	2 X Lewmar Gross, 2 x Lewmar small
Portholes	7 x Lewmar Acryl glas
Fuel tank (litre)	stainless steel 150
Level indicator (fuel tank)	yes



Freshwater tank (litre)	stainless steel 2 x 150
Level indicator (freshwater)	yes
Blackwater tank (litre)	stainless steel 80
Wheel steering	mechanical
Outside helm position	mechanical
Emergency tiller	yes

ACCOMMODATION

Cabins	2
Berths	5
Interior	cherry
Floor	teak and holly
Saloon	yes
Headroom saloon (m)	1,90
Heating	diesel ducted hot air Webasto
Chart table	yes
Aft Cabin	yes
Dinette	yes
Galley	yes
Countertop	Duropol
Sink	stainless steel
Cooker	calor gas
Fridge	yes
Hot water system	220V + engine
Water pressure system	electrical
Crockery	yes
Owners cabin	double bed
Bed length (m)	2,05
Wardrobe	hanging and shelves
Bathroom	separate
Toilet	separate



Toilet system	manual
Wash basin	at the toilet
Shower	separate
Guest cabin 1	double bed
Bed length (m)	2,05
Wardrobe	shelves
Bathroom	separate
Toilet	separate
Toilet system	manual
Wash basin	at the toilet
Shower	separate

MACHINERY

No of engines	1
Make	VOLVO Penta
Type	MD2030 DBT
HP	29
kW	21,32
Fuel	diesel
Year installed	2003
Maximum speed (kn)	7,5
Cruising speed (kn)	6
Consumption (l/hr)	2,5
Range (nm)	450
Engine hours	1500
Engine cooling system	Dual circuit cooling system
Drive	sail-drive
Saildrive seal	Maintenance 2019
Engine controls	electrical & bowden cable
Propeller type	fixed
Propeller blades	2



Manual bilge pump	yes
Electric bilge pump	yes
Electrical installation	12V
Batteries	yes
Start battery	New 2021
Service battery	New 2020
Battery monitor	yes
Battery charger	Mastervolt
Shorepower	with cable

NAVIGATION

Compass	yes
Electric compass	On Autopilot
Multi control display	yes
Depth sounder	yes
Depth sounder/log	Raymarine Tridata ST60
VHF	Marine radio IC-M411
VHF handheld	JCOM AD-95
Autopilot	ST6002
Rudder angle indicator	Autopilot
Plotter/GPS	GARMIN GPS MAP 620
Navtex	WIB2D
AIS receiver	Easy AIS connected to GARMIN
Navigation lights	NEW 2021

EQUIPMENT

Sprayhood	WAYPOINT NEW 2020
Bimini	2018
Cockpit table	yes
Cockpit chairs	yes
Boarding ladder	stainless steel



Deck shower	yes
Anchor	CQR Plough
Anchor chain	10m + 40m rope
Anchor 2	yes
Anchor chain	40m
Dinghy	inflatable TALAMEX TLS2030 (as if new)
Outboard	HONDA BF 2.3 DH (as if new)
Sea railing	stainless steel
Life raft	valise (or bag) PLASTIMO
Life raft (pers)	4
Lifejackets	yes
Horn	yes
Binocular	yes
Radar reflector	yes
Fenders	yes
Mooring lines	yes
Spare parts	yes
Tools	yes
Radio-cd player	yes
Speakers in salon	yes
Clock - barometer	yes
Fire extinguisher	yes
Latest extinguisher survey	Need service
Extra info	Extra ropes, telescopic ladder
Extra info	Vacuum cleaner, polishing machine
Extra info	First Aid kit

RIGGING

Rigging	sloop
Standing rigging	Dyform Checked 2018
Brand mast	Seldén



Material mast	aluminium
Mainsail	yes
Mainsail cover	yes
Fully battened mainsail	Elvstrom 30,90sqm
Genoa	Elvstrom 36,77sqm
Genoa II	Rollytasker sails (not used)
Genoa furler	Furlex selden 2005
Genoa cover	yes
Spinnaker	Not used
Boomvang	mechanical and tackle
Genoa sheetwinches	X 2 Harken
Multifunctional winches	X 2 Harken
Spi-pole	aluminium SELDEN



BAVARIA 36

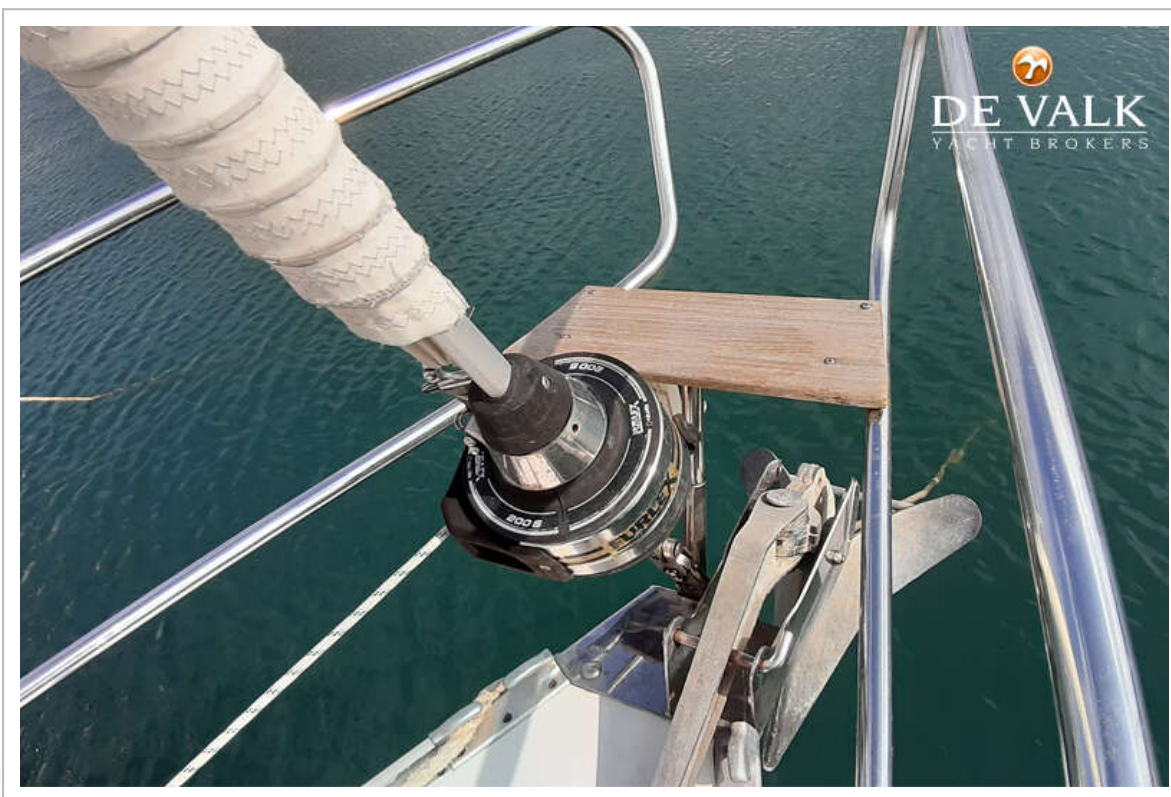


BAVARIA 36

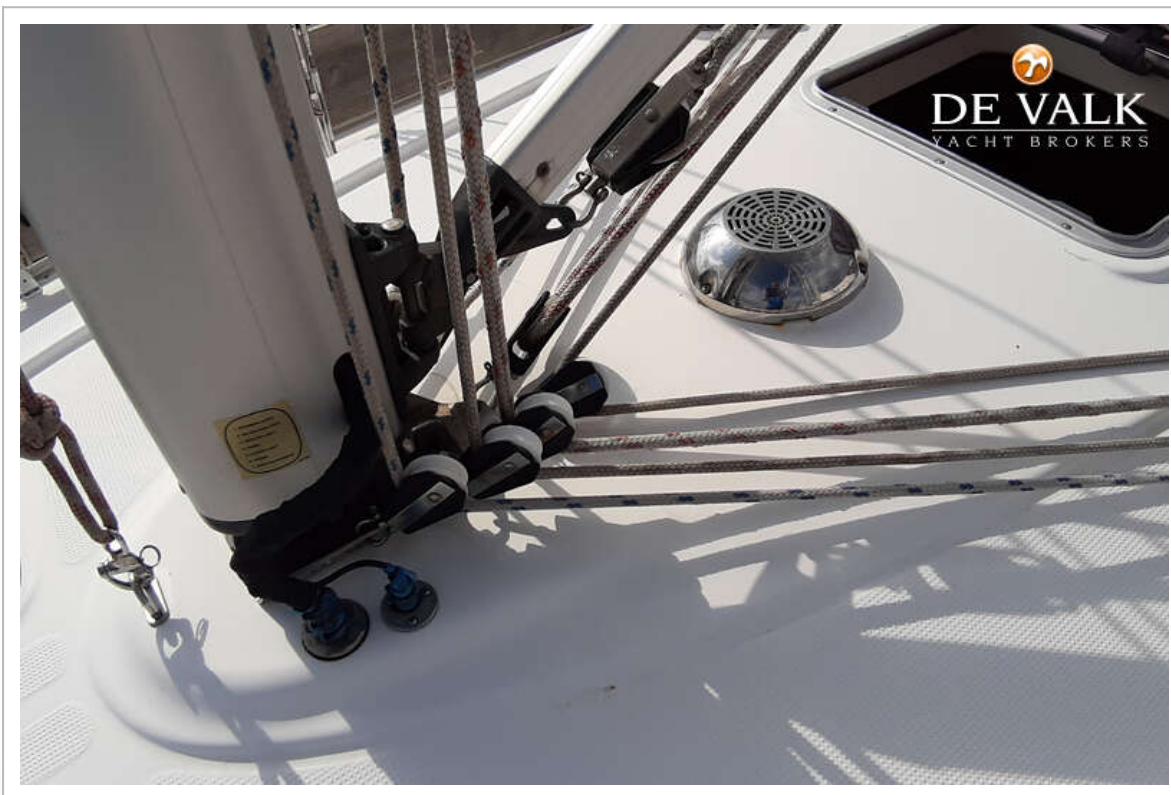


BAVARIA 36

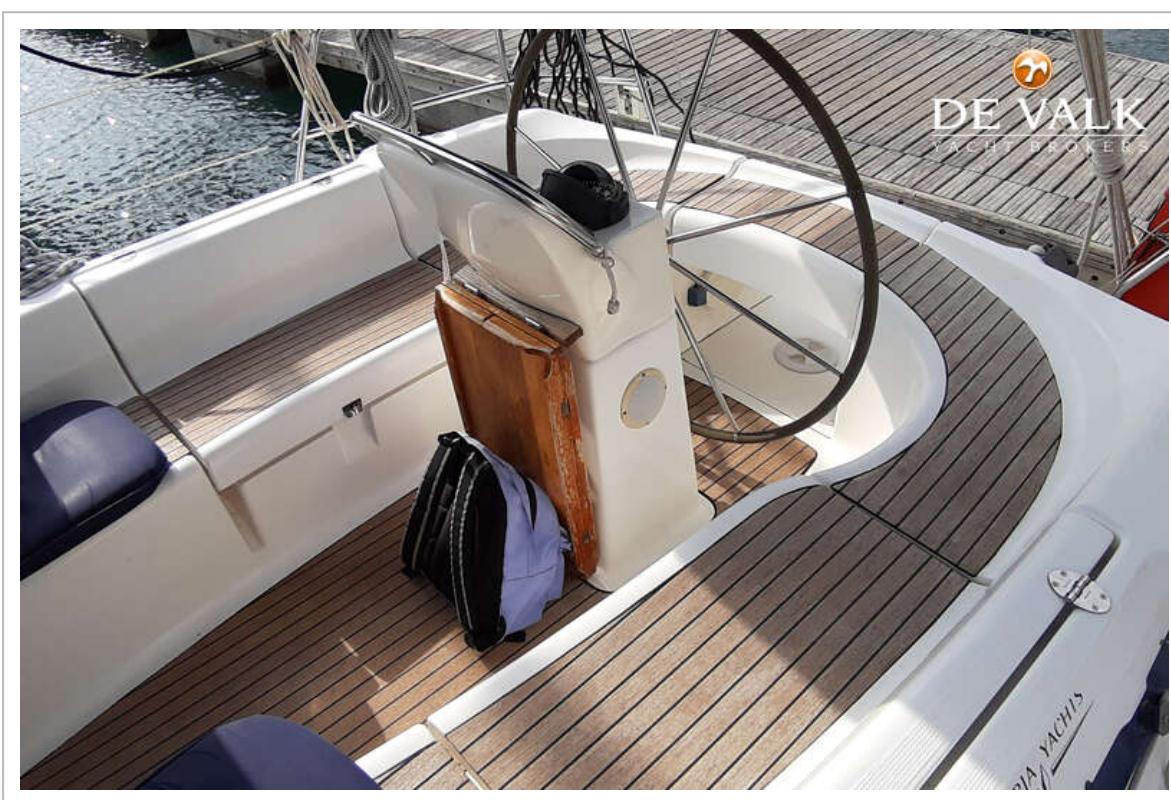
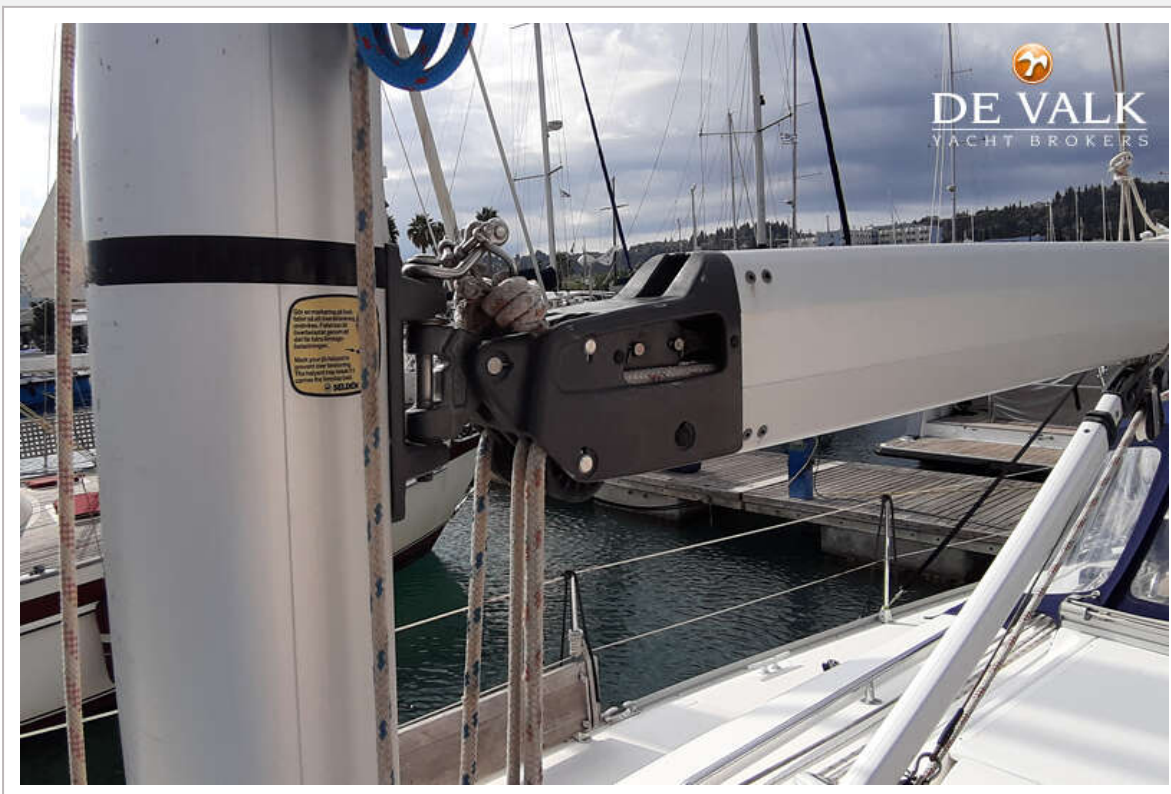




BAVARIA 36



BAVARIA 36



BAVARIA 36



BAVARIA 36





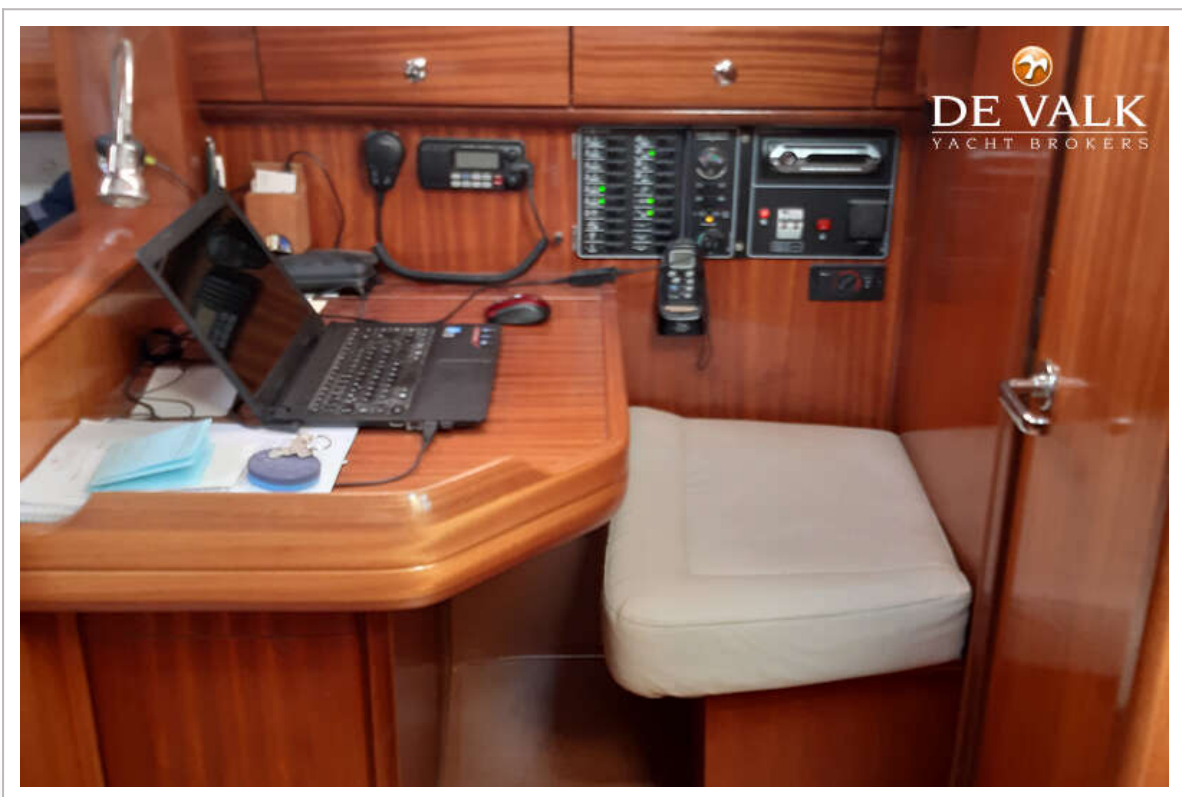
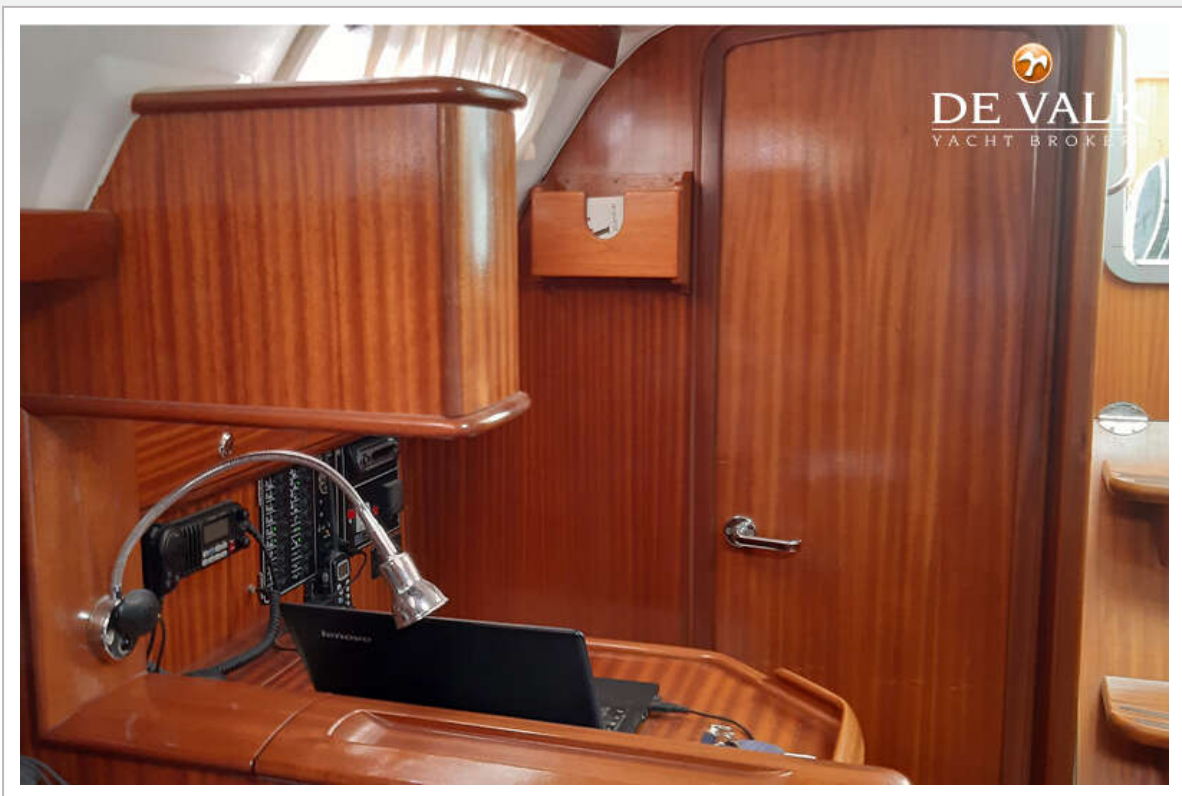
BAVARIA 36



BAVARIA 36



BAVARIA 36



BAVARIA 36

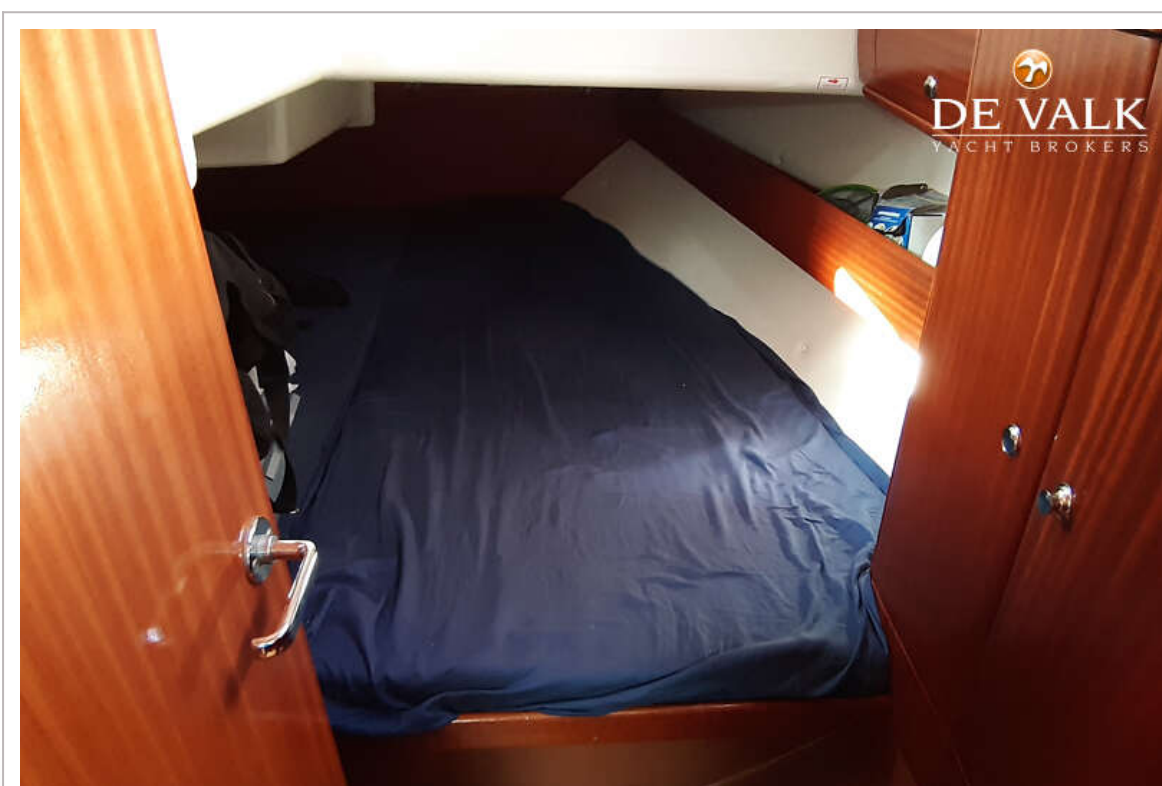
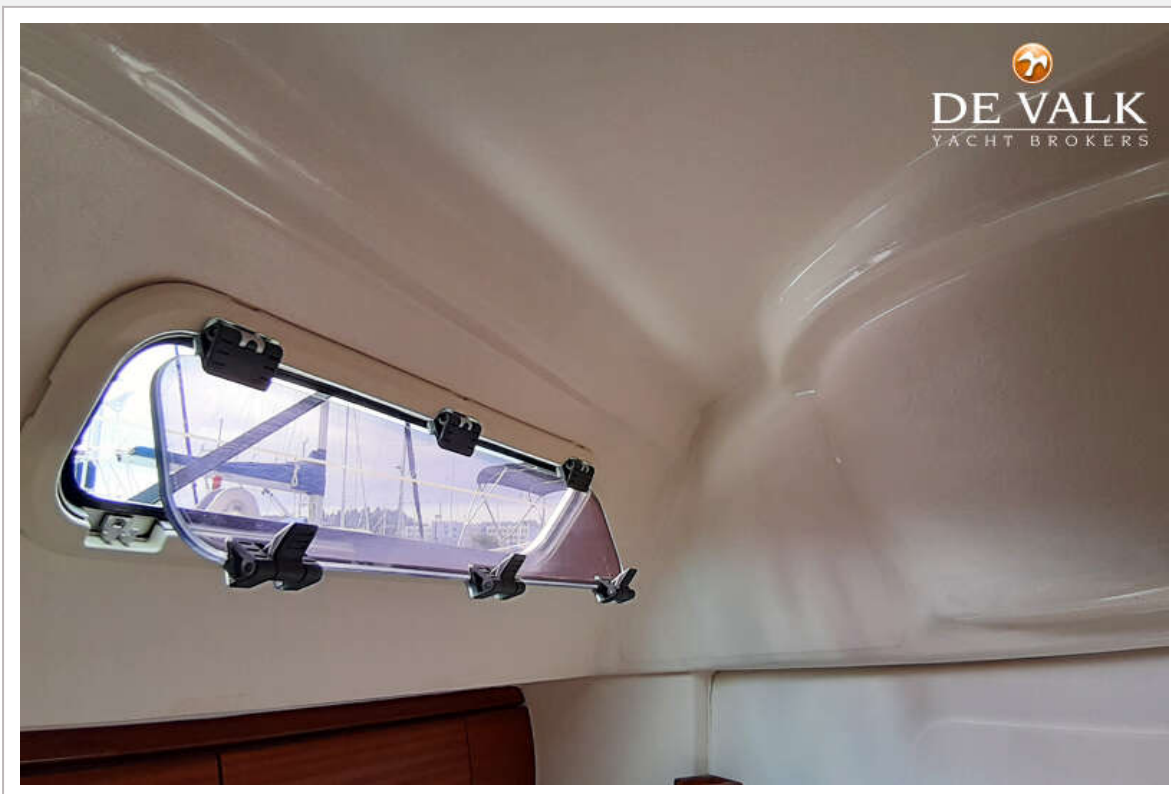


BAVARIA 36

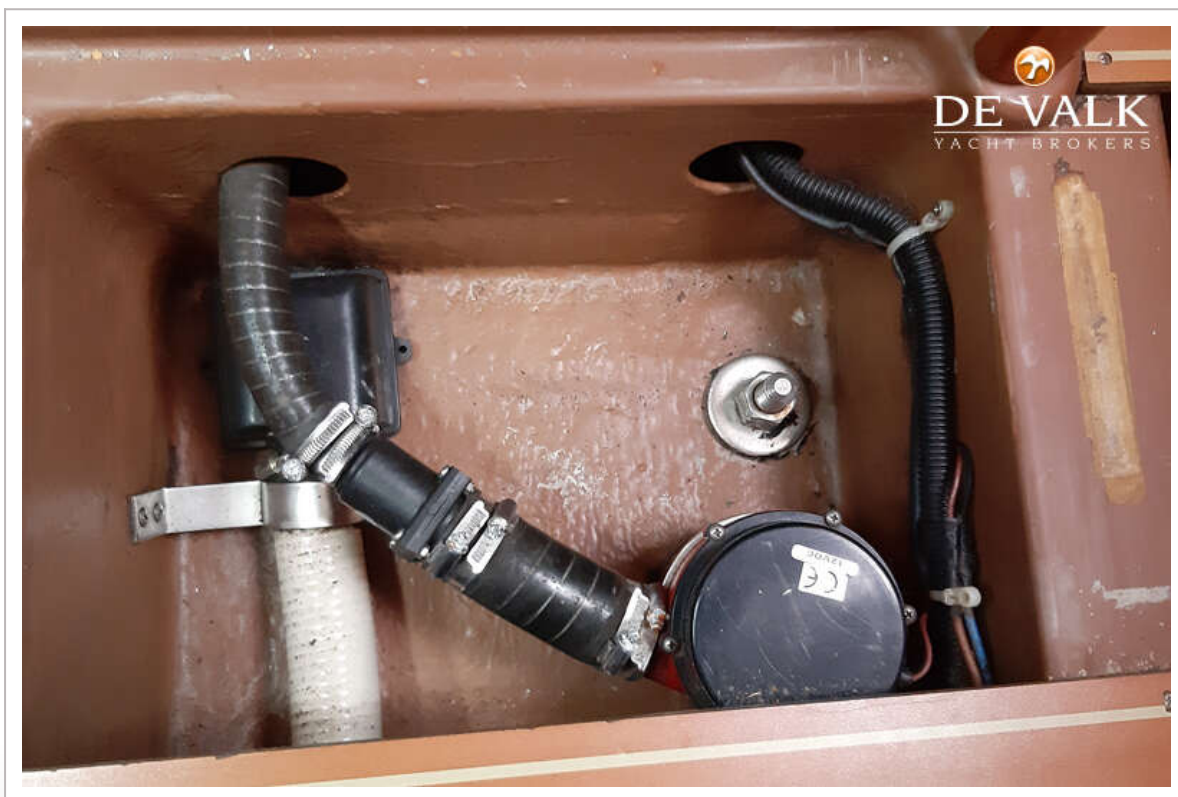
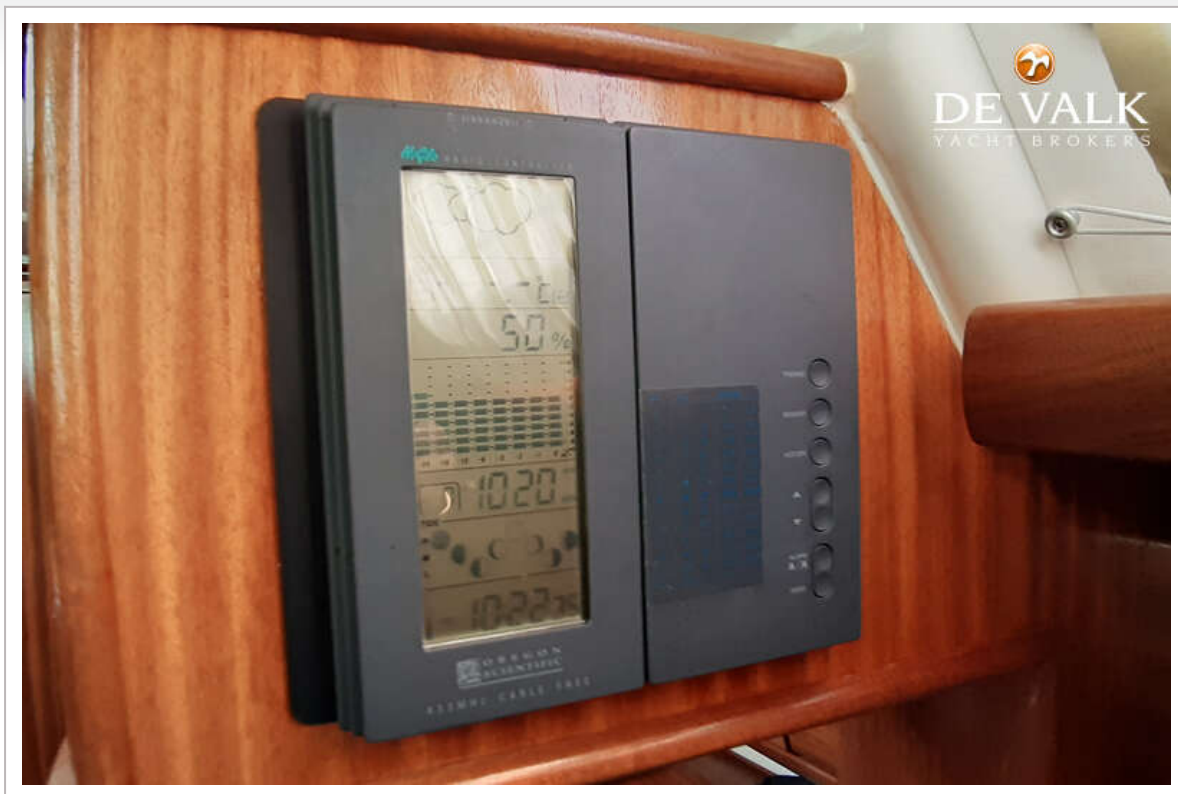




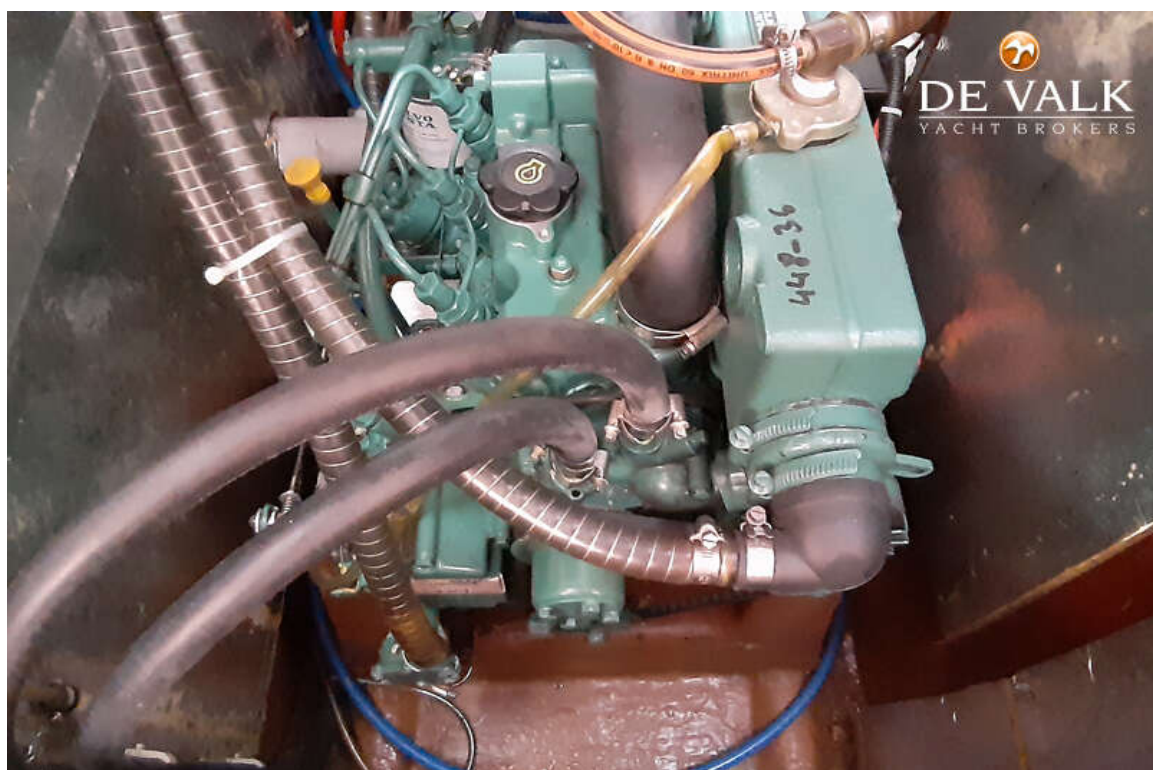
BAVARIA 36



BAVARIA 36



BAVARIA 36



BAVARIA 36

