



DE VALK
YACHT BROKERS

HINCKLEY SOU'WESTER 43



DE VALK
YACHT BROKERS

HINCKLEY SOU'WESTER 43

BROKER'S COMMENTS

This Hinckley Sou'Wester 43 has been meticulously maintained by her first and present second owner. Beside her beautiful design and condition, she represents the highest craftsmanship of the Hinckley Yards. This amazing sailboat is now available for purchase. Come aboard and find out why Hinckley Yachts are known throughout the sailing world as the best in American-made boats. The boat is moored south of Rotterdam. If you would like to visit this boat, please contact our office in Sint Annaland for an appointment.

Jan-Ward van Dantzig

SPECIFICATIONS

Dimensions	13.45 x 3.85 x 3,20 / 1.60 (m)	Builder	Hinckley Yachts
Built	1990	Cabins	1
Material	GRP	Berths	6
Engine(s)	1 x Westerbeke 4 Cylinder diesel	Hp/Kw	48.00 (hp), 35.33 (kw)
Asking price	sold (VAT)	Lying	elsewhere / Not at sales office

CONTACT

Sales office	De Valk Sint Annaland B.V.	Telephone	+31 (0)166 601 000
Address	Koelhuisweg 4 4697 RM Sint Annaland NL	E-mail	sintannaland@devalk.nl

DISCLAIMER

These particulars are given in good faith as supplied but cannot be guaranteed.



HINCKLEY SOU'WESTER 43

GENERAL

Model	HINCKLEY SOU'WESTER 43
Type	sailing yacht
LOA (m)	13,45
Beam (m)	3,85
Draft (m)	1,60
Draft min (m)	3,20
Air draft (m)	18,40
Headroom (m)	1,87
Year built	1990
Launched	1991
Builder	Hinckley Yachts
Country	U.S.A.
Designer	McCurdy & Rhodes
Displacement (t)	11
Ballast (tonnes)	lead 4
CE norm	NA
Hull material	GRP
Hull colour	blue Aristo Blue gelcoat (not painted)
Hull shape	round-bilged
Keel type	centreboard (manual)
Superstructure material	GRP Off White gelcoat (not painted)
Rubbing strake	stainless steel
Deck material	GRP Off White gelcoat (not painted)
Deck finish	non-skid moulded in
Superstructure deck finish	non-skid moulded in
Cockpit deck finish	non-skid moulded in And teak on the floor
Antifouling (year)	2023
Dorades	3 x (re-chromed in 2021)
Window frame	stainless steel Frame has been re-mounted in 2020
Window material	tempered glass (new in 2020)



Deckhatch	2 x (double polycarbonate and teak frame)
Portholes	stainless steel
Fuel tank (litre)	stainless steel 200
Level indicator (fuel tank)	yes
Freshwater tank (litre)	stainless steel 500 (in 4 tanks)
Greywater tank (litre)	yes
Wheel steering	cable steering Epson pedestal with a teak/stainless steel steering wheel
Emergency tiller	yes
More info on hull	Under water hull treaded with an Epoxy system in 2020
More info on paintwork	The stern has been painted Aristo Blue in 2020
Extra info	Spade rudder, Jefa rudder bearing mounted in 2020
Extra info	Plastic through hull fittings & sea cocks
Extra info	Mosquito screens for all opening hatches, windows and entrance.

ACCOMMODATION

Cabins	1
Berths	6
Interior	cherry High gloss varnished (in superb condition)
Floor	teak and holly (solid wood and in superb condition)
Saloon	Saloon table with foldable & extendable table tops on both sides
Headroom saloon (m)	1,90
Heating	diesel ducted hot air Eberspacher
Chart table	On starboard side next to the entrance - Headroom : 1,87 m
Aft Cabin	Open bed (1 - 2 persons) behind the chart table
Dinette to convert into berth	yes
Convertible berth	SB saloon sofa: 2,10 x 0,75m - PS saloon sofa: 1,95 x 0,85m
Galley	Spacious & on starboard side of the entrance - Headroom : 1,87m
Countertop	Duropol (creme)
Sink	stainless steel 2 x



Cooker	calor gas Force Ten - 3 x burner
Oven	Force Ten
Fridge	Large toploader with a SeaFrost compressor on engine & via 110V
Freezer	Toploader with a SeaFrost compressor on engine & via 110V
Hot water system	by engine & 110 Volt - 35 liter Allcraft Corporation Electric Water Heater
Water pressure system	electrical Water pump has been renewed in 2022
Manual and/or foot pump	Foot pump in the galley for sea water
Crockery	yes
Owners cabin	v-bed In front cabin - Headroom : 1,87 m
Bed length (m)	2,00 x 1,60
Wardrobe	hanging/drawers/shelves
Bathroom	en suite Headroom : 1,87 m
Toilet	en suite
Toilet system	manual Skipper
Wash basin	in the bathroom
Shower	en suite Separated shower compartment - Headroom : 1,87 m
Guest cabin 1	double bed Open Aft
Bed length (m)	2,00 x 1,10 m
Wardrobe	shelves
Extra info	Mattress renwed in 2022
Extra info	Saloon sofa's are a bit retractable to create two single bed's
Extra info	Electric Marinetics gas valve (panel in the galley)

MACHINERY

No of engines	1
Make	Westerbeke
Type	4 Cylinder
HP	48
kW	35.33
Fuel	diesel



HINCKLEY SOU'WESTER 43

Year installed	1990
Maximum speed (kn)	8
Cruising speed (kn)	7
Consumption (l/hr)	3,5
Engine hours	1102
Engine cooling system	freshwater heat exchanger
Drive	V-drive
Shaft seal	yes
Engine controls	bowden cable 2 x handle on the pedestal
Gearbox	hydraulic
Bowthruster	electric Max Power CT 100 (intalled incl. tunnel in 2020)
Exhaust	watercooled
Propeller type	feathering Maxprop
Propeller blades	2
Propeller shaft material	stainless steel
Shaft lubrication	water (new in 2023)
Manual bilge pump	yes
Electric bilge pump	Bilgepump renewed in 2021
Electrical installation	12 & 110 & 220 Volt
Start battery	1 x 85 Ah (new in 2021)
Service battery	2 x 120 Ah Exide (gel)
Bowthruster battery	1x 180 Ah VMF Semi Traction (new in 2020) in stainless steel box
Battery charger	1x Victron Phoenix 50A & 1x Victron BlueSmart 30A (new 2021)
Inverter	220 - 110 Volt
Diode battery combiners	yes
Shorepower	with cable Hubbell shore power connection
Extra info	Several 12, 110 and 220 Volt sockets (partly renewed in 2020)
Extra info	Engine has been maintained in spring 2023
Extra info	Sand colour steering pedestal & deck hatch covers (new in 2021)

NAVIGATION



Compass	Ritchie (on pedestal)
Depth sounder	Datamarine (above entrance & at chart table)
Log	Ockam
Windset	Ockam Wind Speed & B & G Wind direction (not functioning)
VHF	Raymarine with an extra handset in cockpit (2020)
Autopilot	Raymarine (new in 2020, incl. hydraulic driver & SS bracket)
Rudder angle indicator	Via autopilot
GPS	Furuno GPS
Plotter	1x Raymarine E120 (stand alone)
Plotter/GPS	1x Raymarine SW90 HybridTouch (new in 2020)
Electronic chart(s)	1x (up-dated in 2023) & 1x (2020)
AIS transponder	Raymarine AIS650 Class B transceiver (new in 2020)
Navigation lights	LED (lights in mast renewed in 2000)
Extra info	Raymarine Acu 400 Actuator Control Unit (new in 2020)
Extra info	BackBone System & Navpod on pedestal for plotter (new in 2020)

EQUIPMENT

Sprayhood with grab rail	Sand Colour
Cockpit cover	Sand Colour - Bimini can be closed with side panels with zippers
Bimini	Sand Colour
Winter cover	Only over the cockpit
Cockpit cushions	Sand colour
Cockpit table	Foldable & varnished teak (mounted in front of the pedestal)
Boarding ladder	stainless steel Removable and can hang on both sides of the hull
Deck shower	(cold water)
Anchor	CQR Plough Stainless steel
Anchor chain	Galvanised chain and rope
Windlass	electrical Simpson & Lawrence
Sea railing	wire Double
Grab rail (superstructure)	teak Varnished



Railing side opening gates	On both sides
Pushpit	Stainless steel
Pulpit	Stainless steel
Lifebuoy	White horse shoe
Horn	(not functioning)
Fenders	yes
Mooring lines	yes
Spare parts	yes
TV	Philips
Radio-cd player	Pioneer
Cockpit speakers	2 x Fushion (new in 2020)
Speakers in salon	2 x
Clock - barometer	Wempe Clock & Barometer (new in 2016)
Fire extinguisher	2 x
Latest extinguisher survey	Need to be checked/renewed
Extra info	LED interior lights, floor lights & cockpit lights (new in 2020)
Extra info	Hoses in bathroom, galley and some of engine (in 2021)
Extra info	Very large cockpit locker. Zinc Saver

RIGGING

Rigging	sloop
Standing rigging	Rod (1990)
Material mast	aluminium coated Oyster White painted in 2020
Spreaders	2 x set - Oyster White painted in 2020
Keel stepped mast	yes
Mainsail cover	Sand coloured (new in 2020) with Lazy-Jacks
Battcars	On the long battens
Fully battened mainsail	Dolye Sails (1990 - still nice condition)
Jib	North Sails furling Jib (new in 2021)
Genoa	Dolye Sails (1990 - still nice condition)
Genoa furler	Reckmann



Reefing System	slabreefing
Boomvang	Quickvang (with spring)
Primary sheet winch	1 x Barent & 1 x Barent 35 (serviced in 2020)
Secondary sheet winch	2 x Barent 28+ ST (serviced in 2020)
Genoa sheetwinches	2 x Barent 32 ST (serviced in 2020)
Halyard winches	1 x Barent 24-45 ST - 2 speed (serviced in 2020)
Reefing winch	1 x Barent 16 ST (serviced in 2020)
Extra info	Harken gear (rails, blocks), Spinlock halyard jammers
Extra info	Dyneema mainsail halyard (new in 2022)



HINCKLEY SOUTHWESTER 43



HINCKLEY SOU'WESTER 43



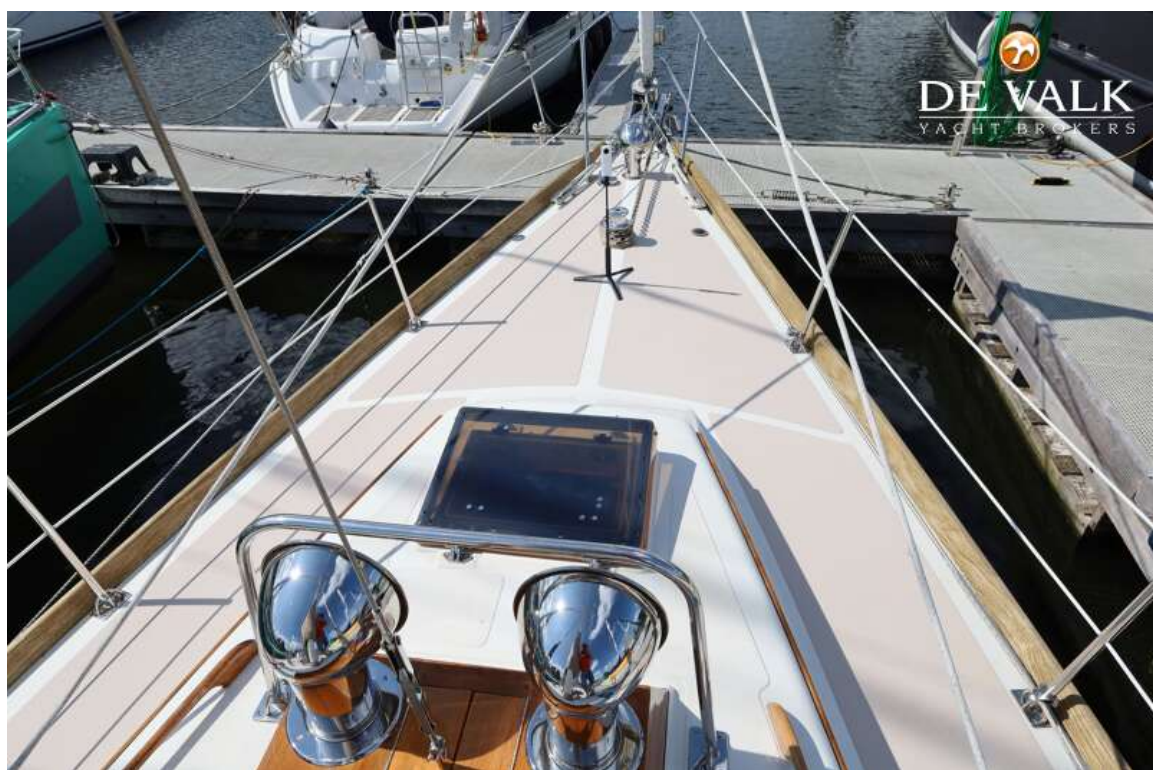
HINCKLEY SOU'WESTER 43



HINCKLEY SOU'WESTER 43



HINCKLEY SOU'WESTER 43



HINCKLEY SOU'WESTER 43



HINCKLEY SOU'WESTER 43



HINCKLEY SOU'WESTER 43



HINCKLEY SOU'WESTER 43



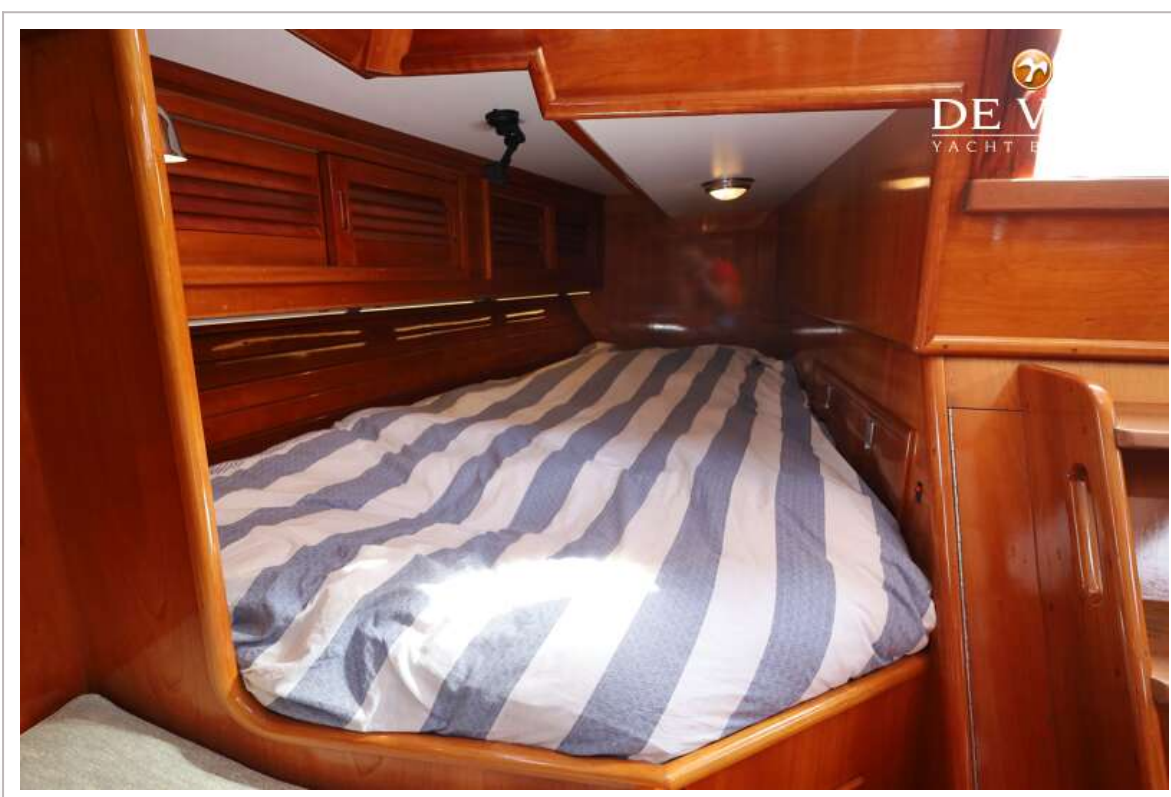
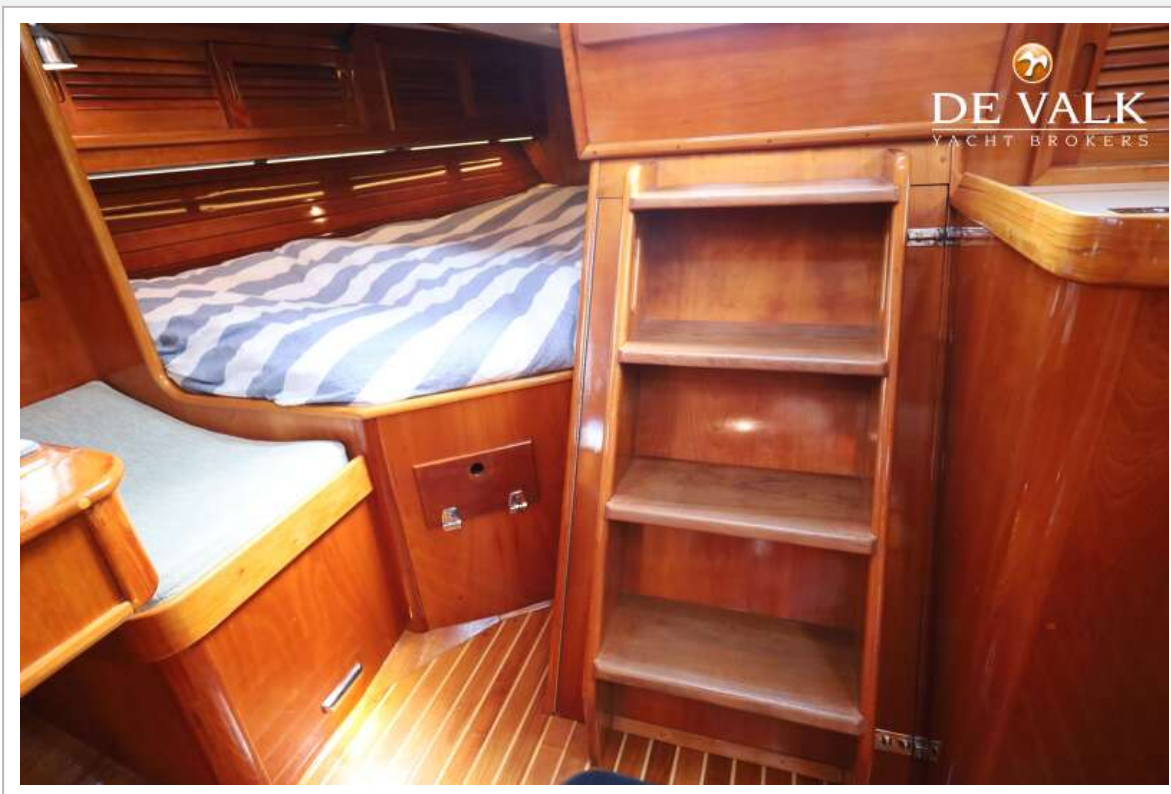
HINCKLEY SOU'WESTER 43



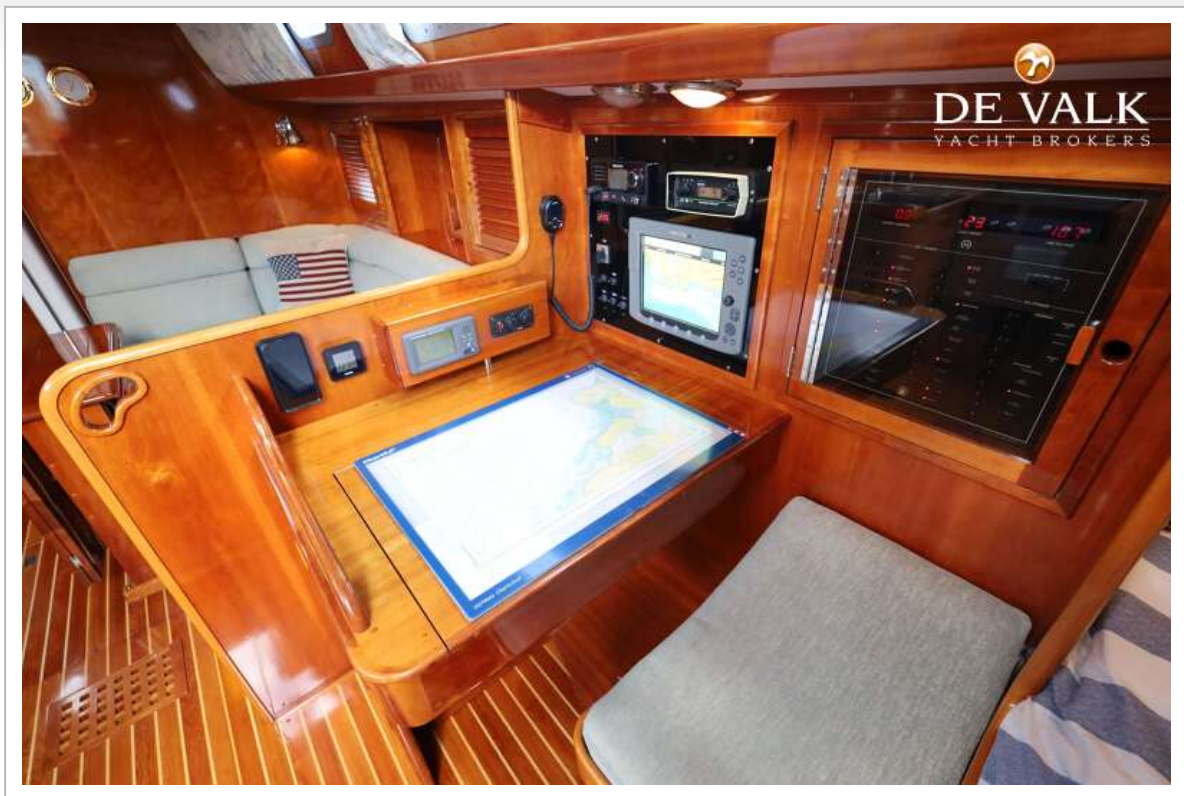
HINCKLEY SOU'WESTER 43



HINCKLEY SOU'WESTER 43



HINCKLEY SOU'WESTER 43



HINCKLEY SOU'WESTER 43



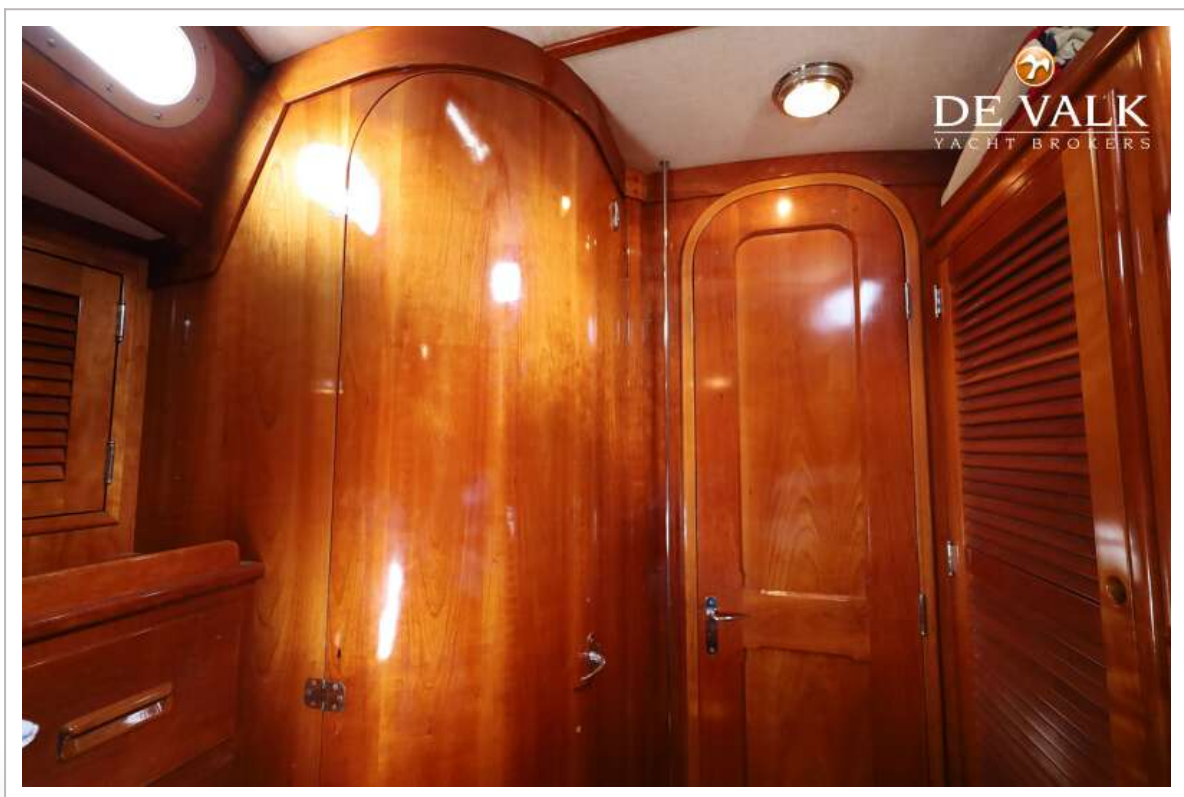
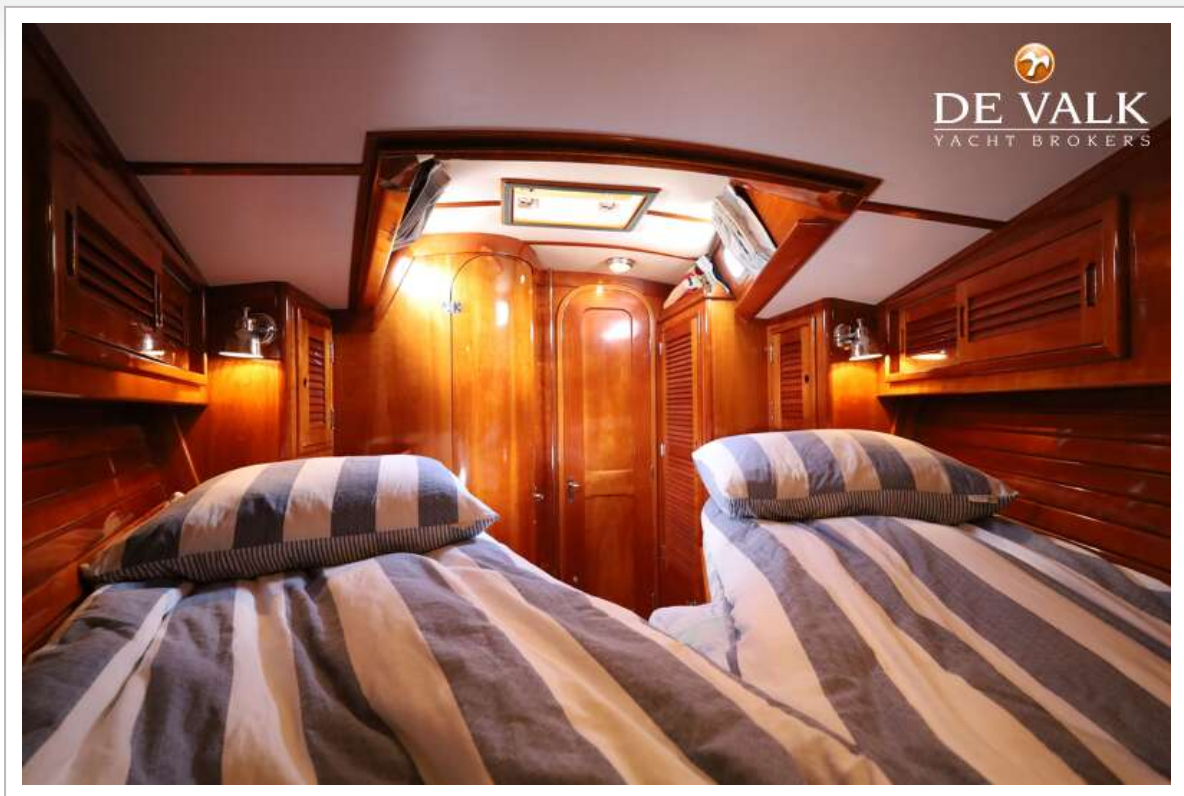
HINCKLEY SOU'WESTER 43



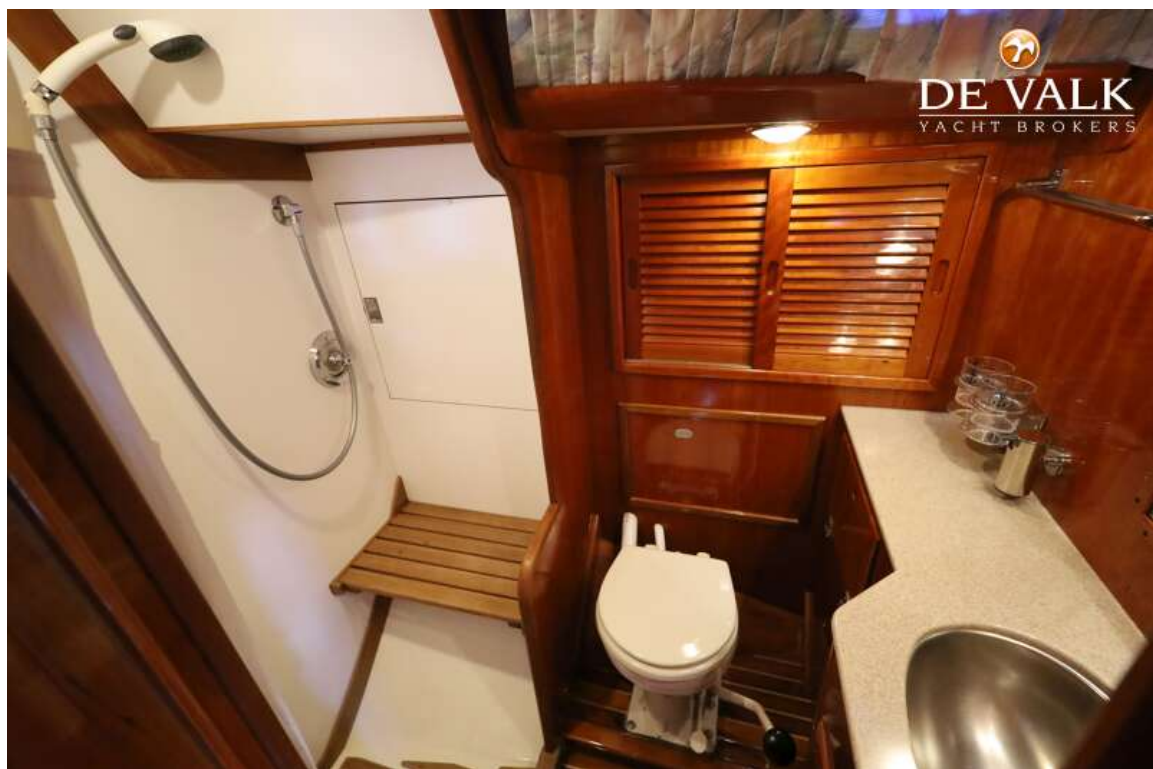
HINCKLEY SOU'WESTER 43



HINCKLEY SOU'WESTER 43



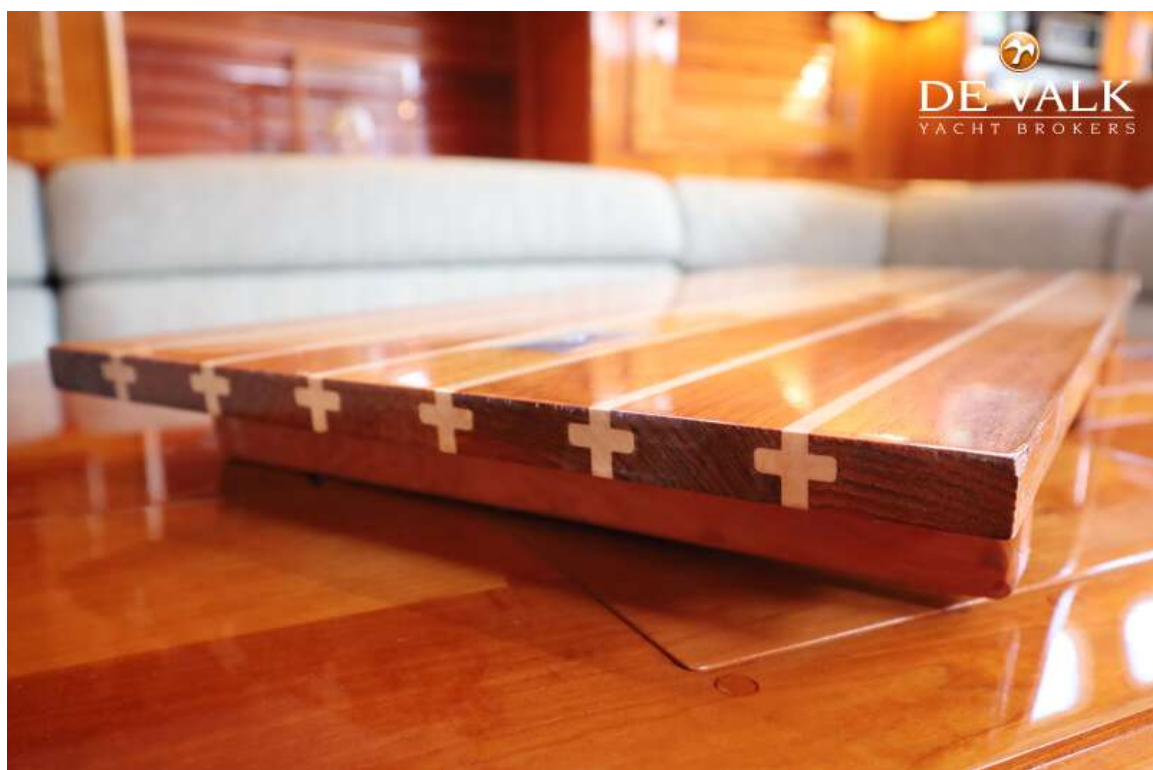
HINCKLEY SOU'WESTER 43



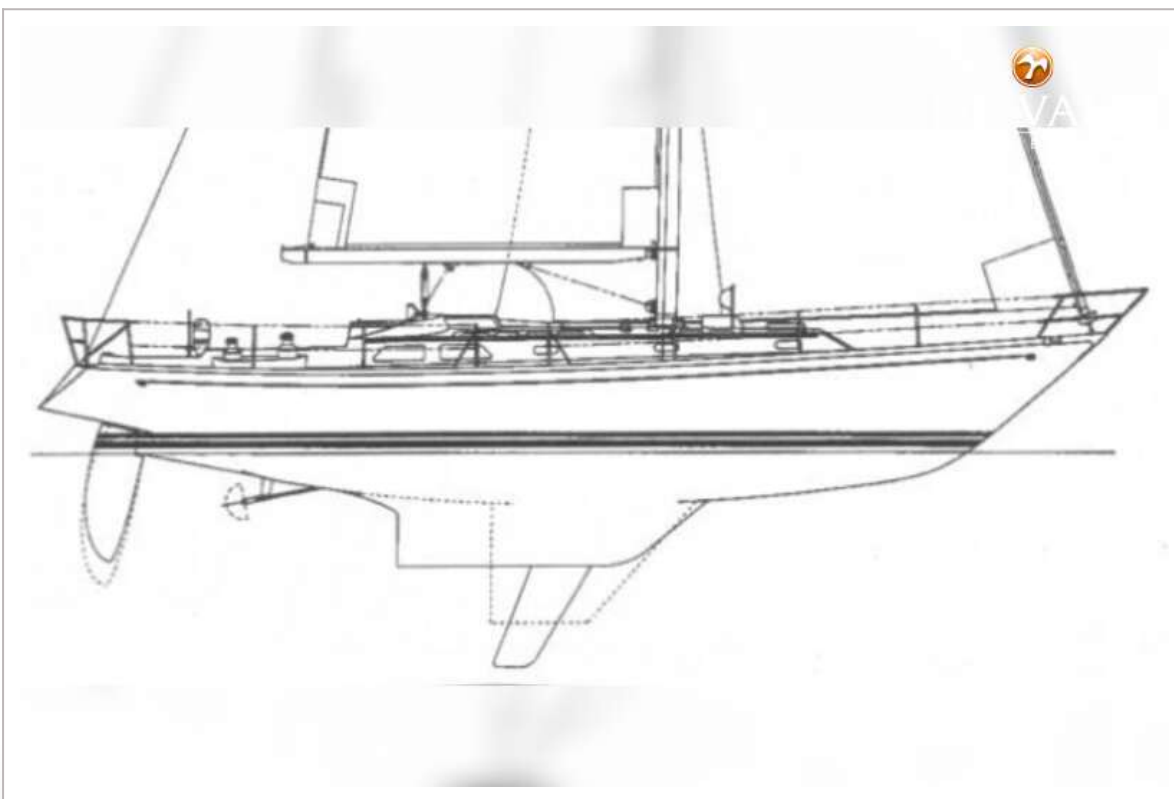
HINCKLEY SOU'WESTER 43



HINCKLEY SOU'WESTER 43



HINCKLEY SOUTHWESTER 43



HINCKLEY SOU'WESTER 43

