



DE VALK
YACHT BROKERS



SOUTHERLY 115 MK III



DE VALK
YACHT BROKERS

BROKERAGE | CHARTER | BERTHS | FINANCE | INSURANCE | YACHT MANAGEMENT

SOUTHERLY 115 MK III

BROKER'S COMMENTS

Southerly 115 "Piffen" spent its first few years in the UK in the Solent. It sold to The Netherlands in 2008. Just 2 owners! Its swing keel offers both shallow draught freedom and deep draught performance; the yacht has a variable depth from 0.69 to 2.46 m, and can be easily beached. A versatile yacht. This Southerly 115 is equipped with a large aft owners cabin with standing headroom, a roomy salon with excellent visibility around through large windows, large galley and surprisingly designed front cabin. This beautiful yacht can be visited 7 days a week in our sales marina in Katwoude.

Harald Padberg

SPECIFICATIONS

Dimensions	11.20 x 3.62 x 0,69 / 2.46 (m)	Builder	Northshore Yacht Ltd.
Built	2003	Cabins	2
Material	GRP	Berths	7
Engine(s)	1 x Yanmar 3JH3E diesel	Hp/Kw	40.00 (hp), 29.40 (kw)
Asking price	sold (VAT)	Lying	at sales office

CONTACT

Sales office	De Valk Monnickendam B.V.	Telephone	+31 (0)299 65 63 50
Address	Hoogedijk 6 1145 PM Katwoude NL	E-mail	monnickendam@devalk.nl

DISCLAIMER

These particulars are given in good faith as supplied but cannot be guaranteed.



SOUTHERLY 115 MK III

GENERAL

Model	SOUTHERLY 115 MK III
Type	sailing yacht
LOA (m)	11,20
Beam (m)	3,62
Draft (m)	2,46
Draft min (m)	0,69
Year built	2003
Builder	Northshore Yacht Ltd.
Country	United Kingdom
Designer	Rob Humphreys
Displacement (t)	6,9
CE norm	A
Hull material	GRP
Hull colour	off-white
Hull shape	round-bilged
Keel type	Hydraulic Swing Keel
Superstructure material	GRP
Rubbing strake	Teak
Deck material	GRP
Deck finish	non-skid moulded in
Superstructure deck finish	non-skid moulded in
Cockpit deck finish	teak
Antifouling (year)	2019
Dorades	1 X
Window material	polycarbonate
Deckhatch	4 X
Portholes	11 X
Fuel tank (litre)	180 L.
Level indicator (fuel tank)	yes
Freshwater tank (litre)	225 L.



Level indicator (freshwater)	yes
Blackwater tank (litre)	yes
Level indicator (blackwater)	yes
Blackwater tank extraction	deck extraction + uw line
Wheel steering	mechanical
Emergency tiller	yes
Extra info	The Southerly is known for its sailing qualities because of its ballast / displacement ratio: 50% !! (Groundplate 2,25t + swing keel 1,2 t - total 3,45t ballast with a displacement of 6.9t.)
Extra info	** VAT is paid in the UK by the first owner before delivery / handover in 2003. Original invoice is present **

ACCOMMODATION

Cabins	2
Berths	7
Interior	cherry
Floor	teak and holly
Headroom saloon (m)	1.95 M. galley and 1.88 M. in saloon
Heating	Eberspächer diesel
Chart table	yes
Aft Cabin	yes
Dinette to convert into berth	double bed
Galley	yes
Sink	yes
Cooker	Neptune 2000 - gas
Oven	Neptune 2000 - gas
Fridge	Isotherm
Hot water system	220V/engine/heating
Water pressure system	electrical
Owners cabin	double bed
Bed length (m)	1.82 M. length - 2.40 M. width
Wardrobe	hanging/drawers/shelves



SOUTHERLY 115 MK III

Bathroom	separate
Toilet	separate
Toilet system	manual
Wash basin	in the bathroom
Shower	shared
Guest cabin 1	twin single
Bed length (m)	1.95 M. length - 0.60 M. width
Wardrobe	drawers and shelves

MACHINERY

No of engines	1
Make	Yanmar
Type	3JH3E
HP	40
kW	29,40
Fuel	diesel
Year installed	2003
Maximum speed (kn)	7
Cruising speed (kn)	5
Drive	shaft
Engine controls	bowden cable
Gearbox	mechanical
Bowthruster	Electr. Sidepower SP-75-T
Propeller type	feathering 18" Darglow FeatherStream
Propeller blades	3
Propeller shaft material	stainless steel
Manual bilge pump	yes
Electric bilge pump	yes
Service battery	2 X VDC31M - 12V / 105 Ah
Bowthruster battery	1 X AGM100 - 12V / 100 Ah
Battery monitor	Victron BMV-700



Battery charger	Sterling 30 Amp.
Inverter	Victron Pure Sine Wave Inverter
Diode battery combiners	yes
Shorepower	with cable

NAVIGATION

Compass	Whitlock
Depth sounder	Raymarine ST60
Log	Raymarine ST60
Windset	Raymarine ST60
VHF	Raymarine 55E + RayMic 2nd station
VHF handheld	ICOM IC-M33
Autopilot	Inside and outside operation Raymarine ST6001+
GPS	Apelco GPS15
Plotter/GPS	Raymarine E - HybridTouch
AIS transceiver	Raymarine AIS650 + 100 serie splitter
Navigation lights	yes
Extra info	VHF device in 2021 checked by repair shop, functions properly. Some noise / murmur audible. Cabling in mast needs to be checked.

EQUIPMENT

Sprayhood	yes
Winter cover	from mast to stern.
Boarding ladder	stainless steel
Anchor	Bruce 15 Kg
Anchor chain	10 mm chain - 10 meters + 50 meters rope
Windlass	manual S-L Hyspeed
Sea railing	yes
Grab rail (superstructure)	stainless steel
Railing side opening gates	yes



Pushpit	yes
Pulpit	yes
Safety harness	yes
Lifebuoy	yes
Danbuoy	yes
Wiper	yes
Radar reflector	yes
Fenders	yes
Mooring lines	yes
Spare parts	yes
Tools	yes
Clock - barometer	Digital Cresta

RIGGING

Rigging	sloop
Standing rigging	wire
Brand mast	Seldén
Material mast	aluminium
Spreaders	2 sets
Mainsail	23 m2
Stoway mast	yes
High aspect	very little used 18 m2
Genoa	37 m2
Genoa furler	Furlex 200-S
Genoa cover	yes
Reefing System	main in-mast furling
Boomvang	mechanical
Genoa sheetwinches	2 X Lewmar 44
Multifunctional winches	2 X Lewmar 16
Gennaker pole	aluminium



SOUTHERLY 115 MK III



SOUTHERLY 115 MK III



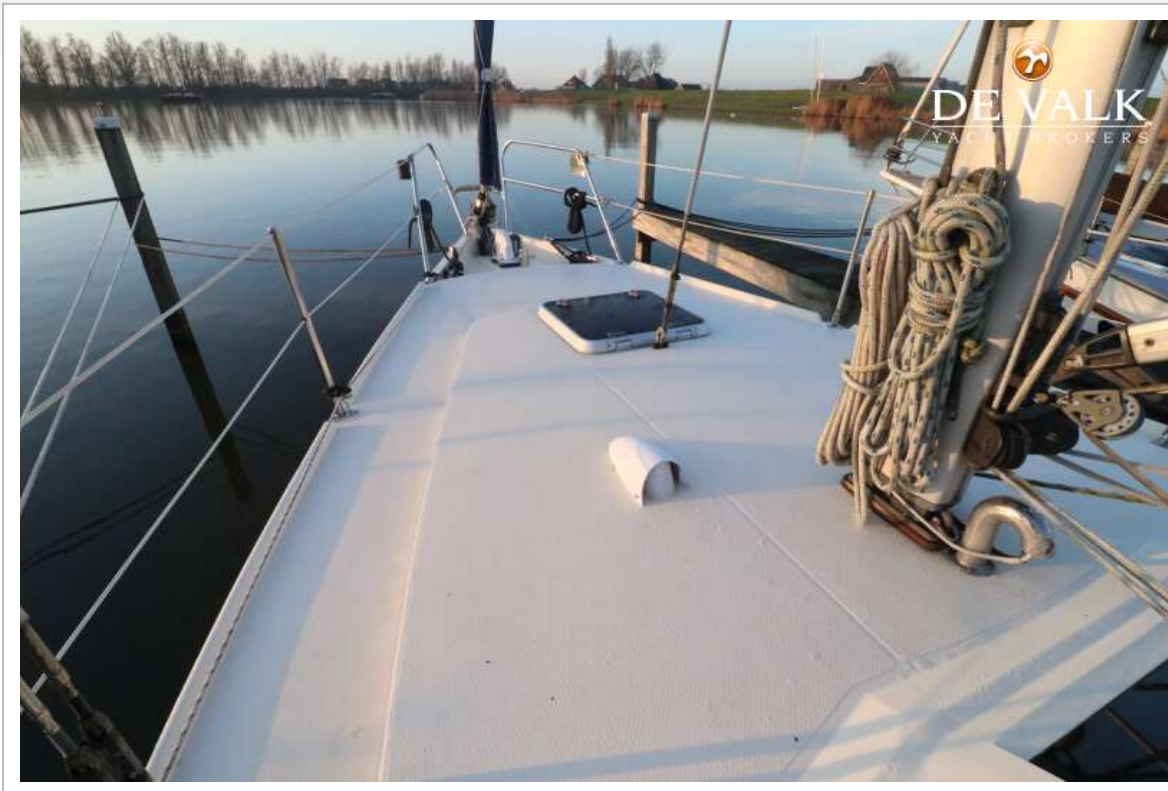
SOUTHERLY 115 MK III



SOUTHERLY 115 MK III



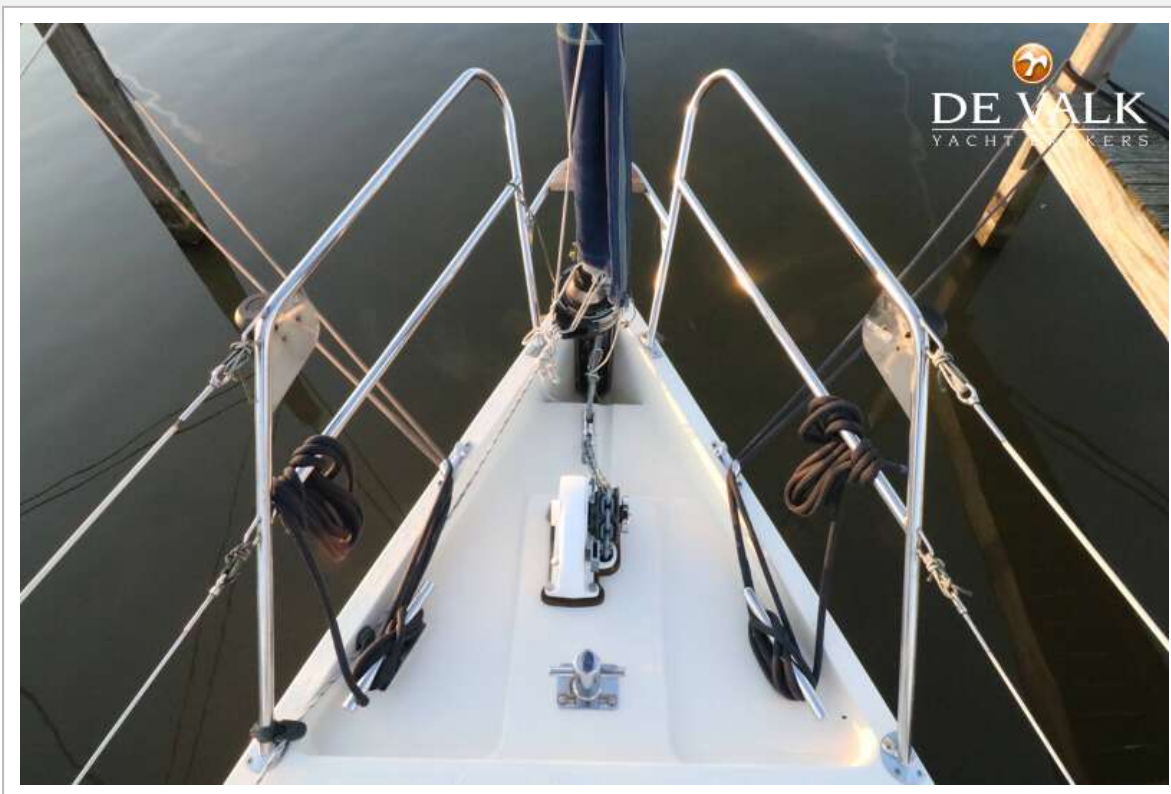
SOUTHERLY 115 MK III



SOUTHERLY 115 MK III



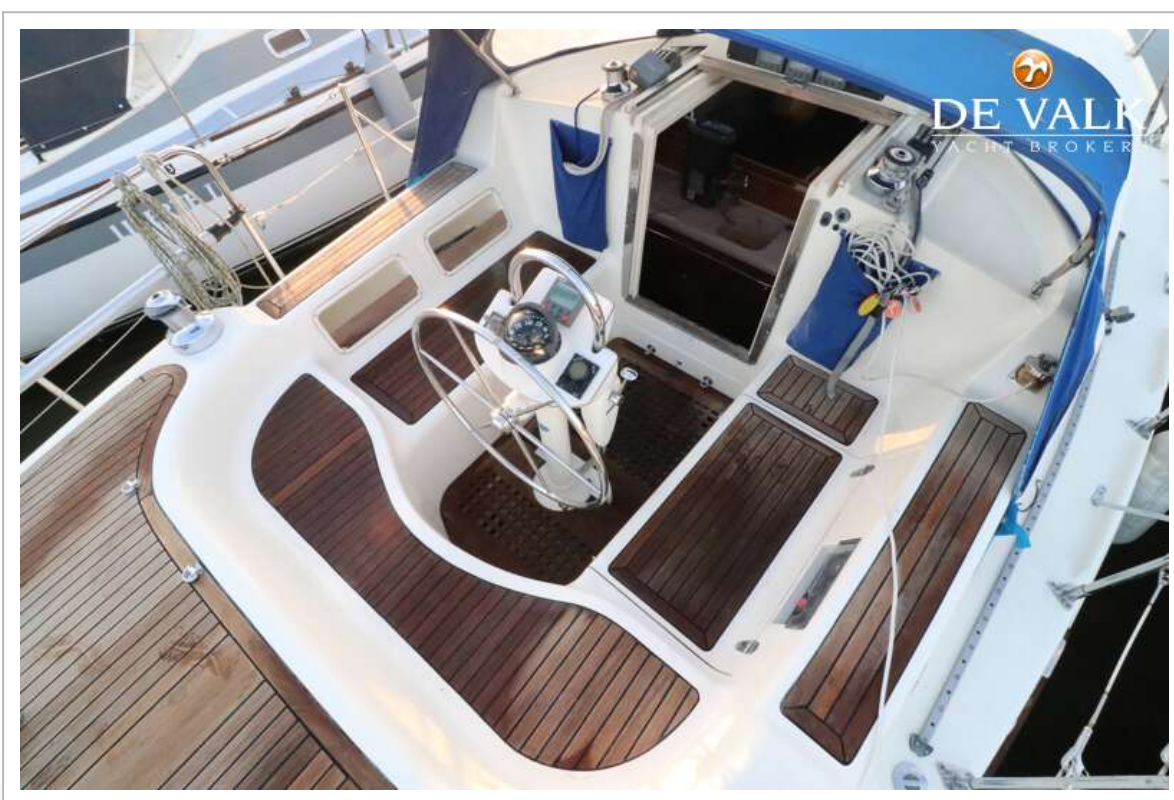
SOUTHERLY 115 MK III



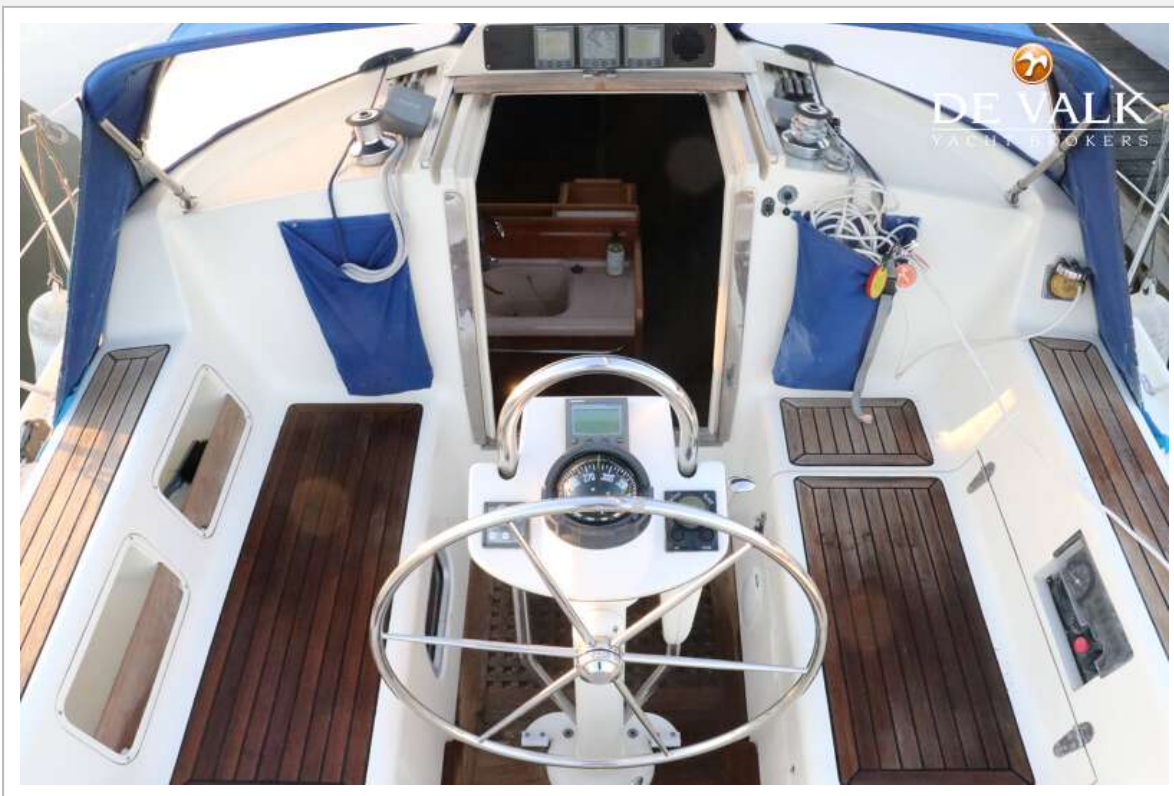
SOUTHERLY 115 MK III



SOUTHERLY 115 MK III



SOUTHERLY 115 MK III



SOUTHERLY 115 MK III



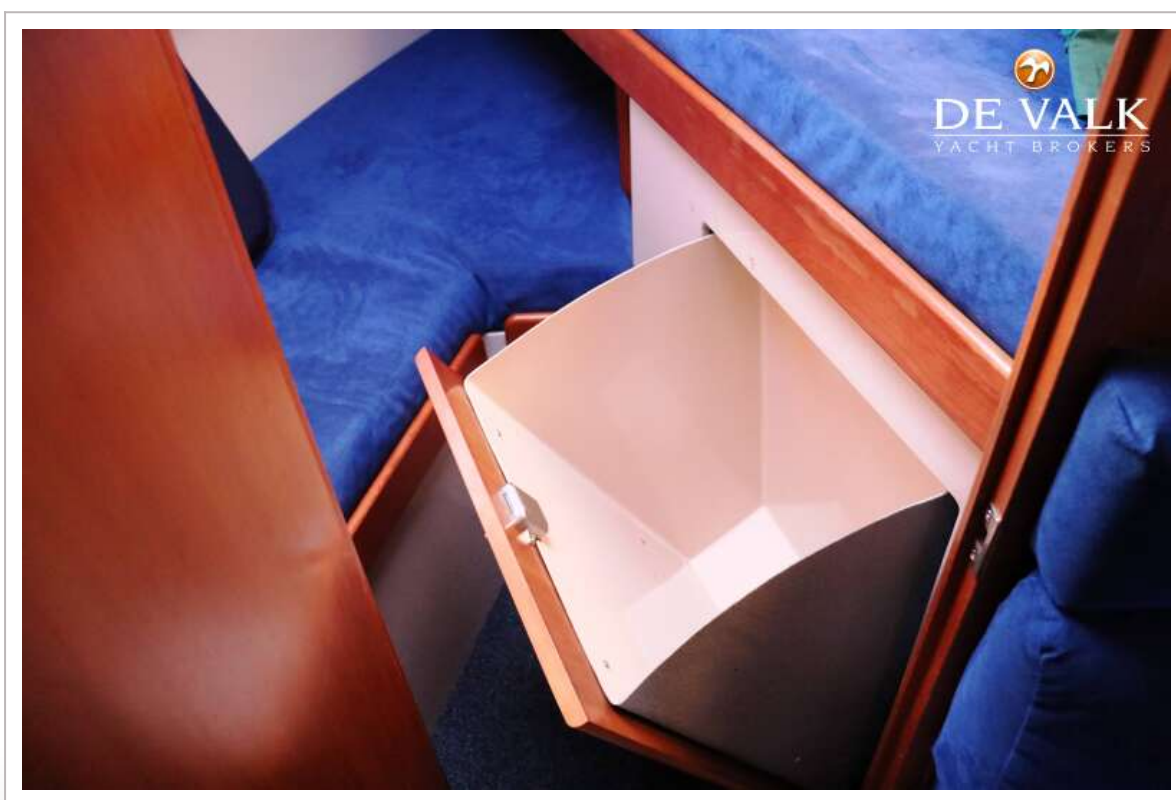
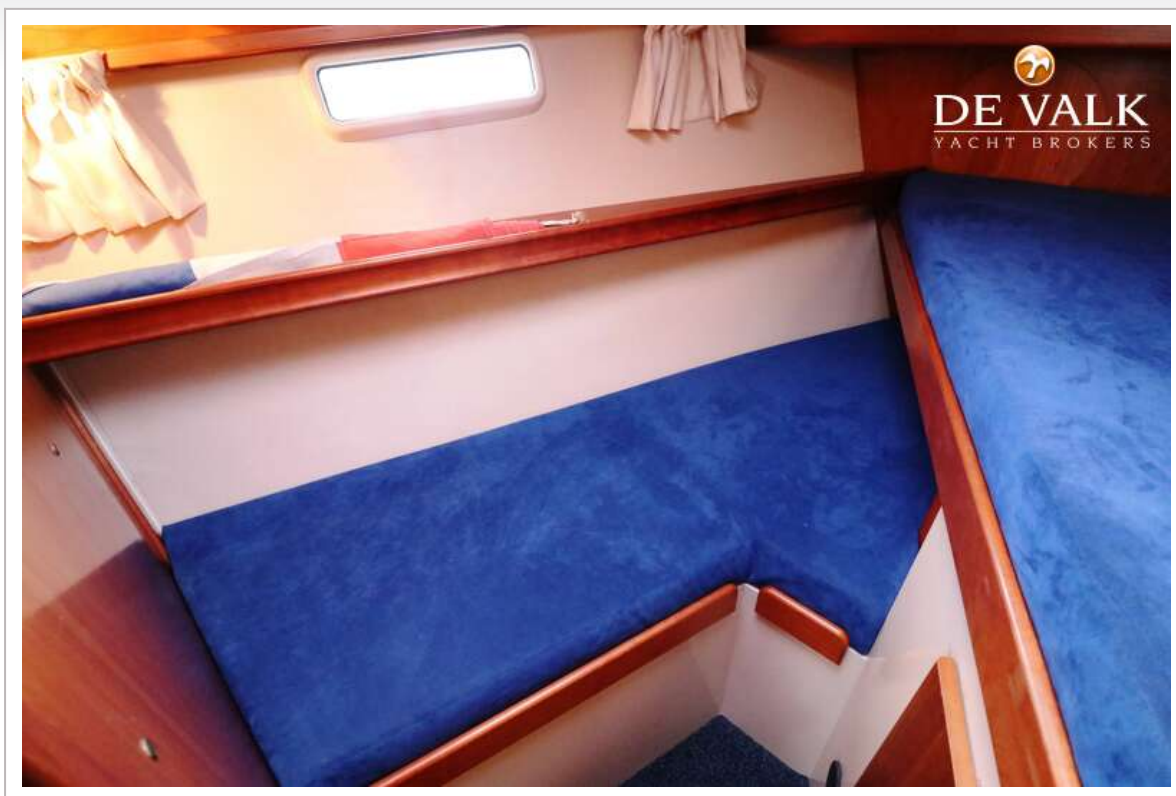
SOUTHERLY 115 MK III



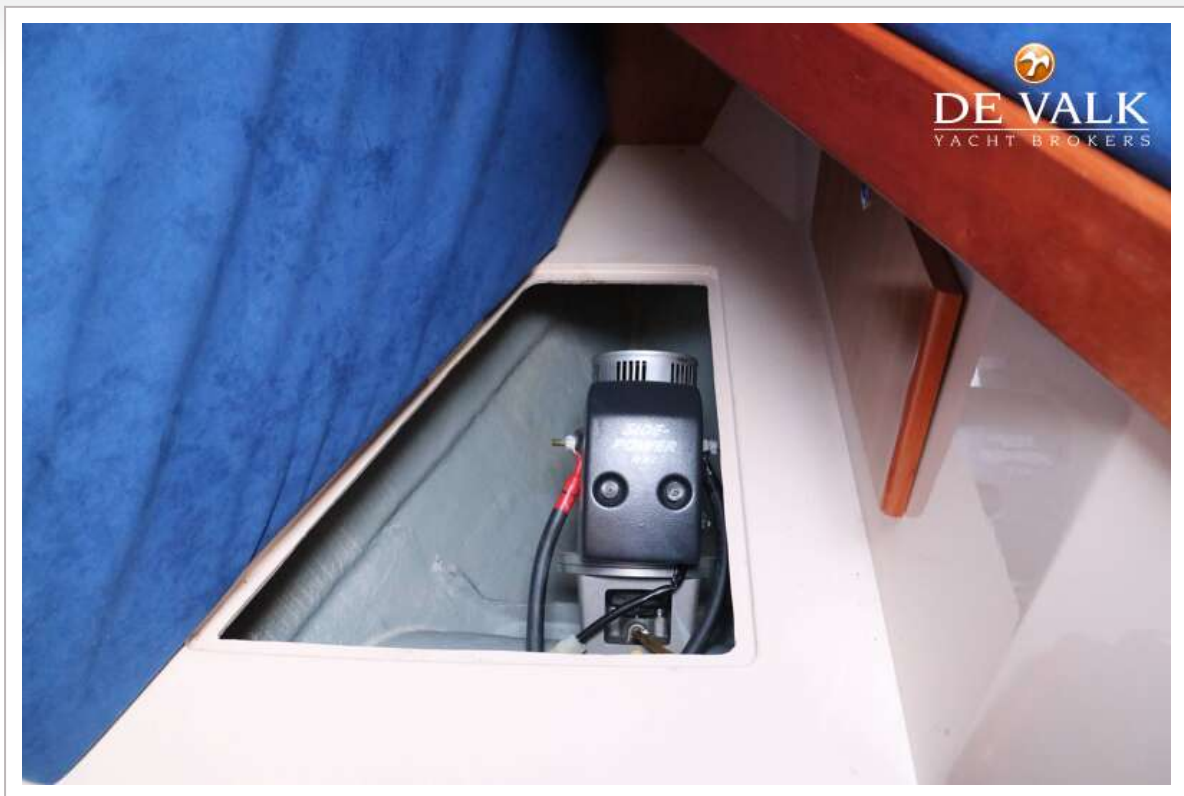
SOUTHERLY 115 MK III



SOUTHERLY 115 MK III



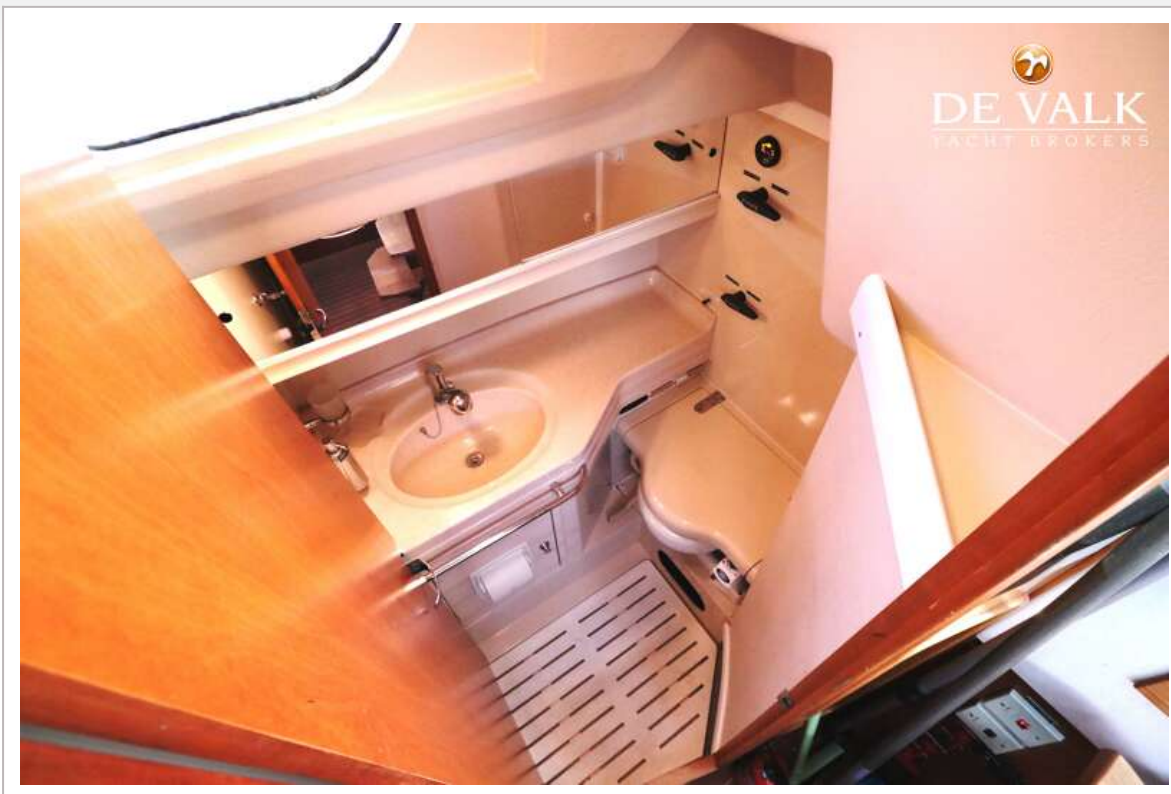
SOUTHERLY 115 MK III



SOUTHERLY 115 MK III



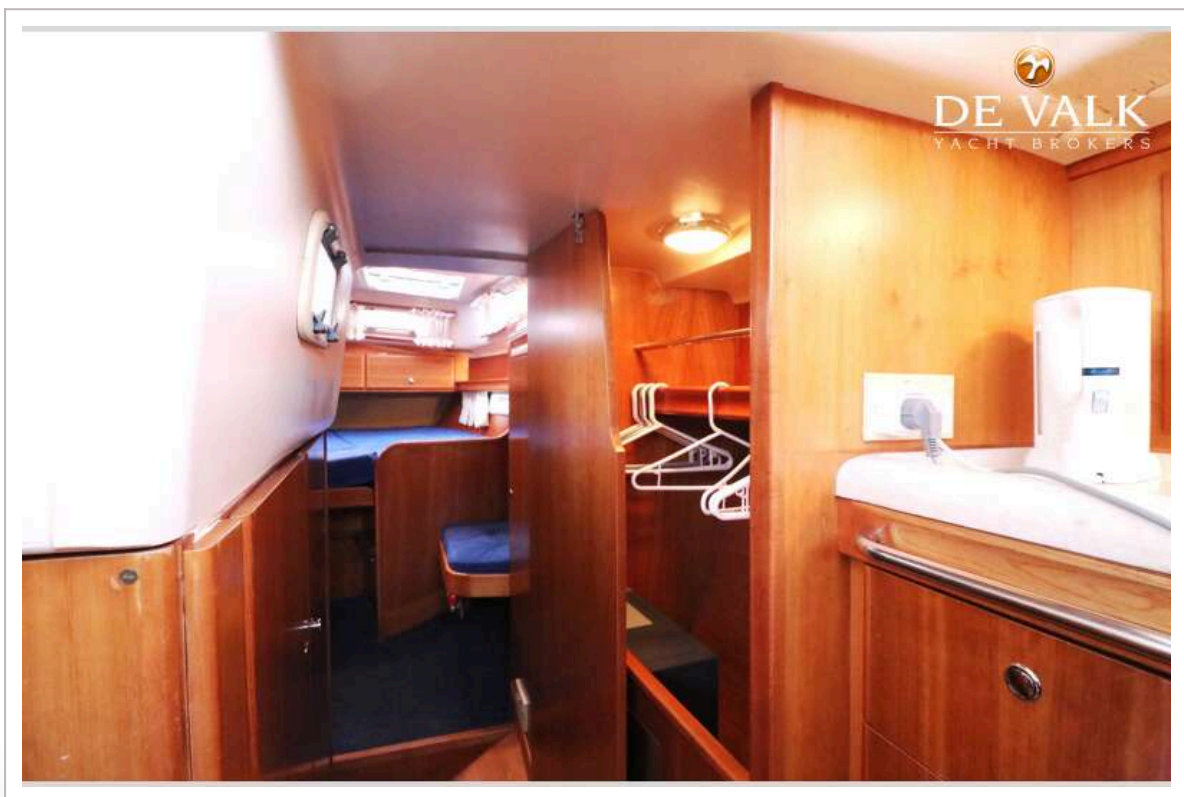
SOUTHERLY 115 MK III



SOUTHERLY 115 MK III



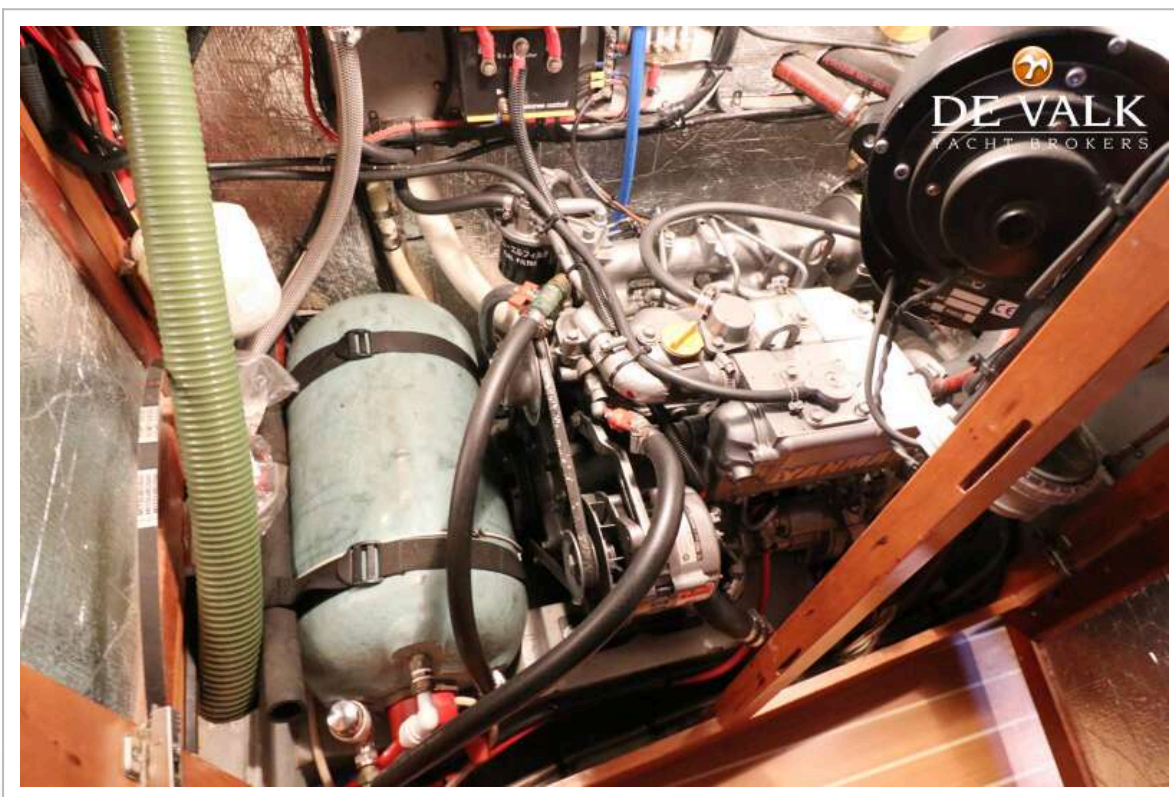
SOUTHERLY 115 MK III



SOUTHERLY 115 MK III



SOUTHERLY 115 MK III



SOUTHERLY 115 MK III

