



DE VALK
YACHT BROKERS



SUNSEEKER CARIBBEAN 52



DE VALK
YACHT BROKERS

SUNSEEKER CARIBBEAN 52

BROKER'S COMMENTS

The Sunseeker Caribbean 52 is a surprisingly spacious flybridge motor yacht from the world famous Sunseeker brand. She sleeps 7 in 4 cabins and has the usual lower and upper saloon. The galley is aft. Powerful and dependable Detroit Diesel engines on V-drives give a nice turn of speed. Come and see this Sunseeker Caribbean 52 at De Valk in Sint Annaland.

Nick Lanting

SPECIFICATIONS

Dimensions	15.86 x 4.45 x 1.30 (m)	Builder	Sunseeker
Built	1994	Cabins	4
Material	GRP	Berths	7
Engine(s)	2 x Detroit Diesel 8V92TA diesel	Hp/Kw	2 x 760.00 (hp), 559.36 (kw)
Asking price	sold (VAT)	Lying	at sales office

CONTACT

Sales office	De Valk Sint Annaland B.V.	Telephone	+31 166 601 000
Address	Koelhuisweg 4 4697 RM Sint Annaland NL	E-mail	sintannaland@devalk.nl

DISCLAIMER

These particulars are given in good faith as supplied but cannot be guaranteed.



SUNSEEKER CARIBBEAN 52

GENERAL

Model	SUNSEEKER CARIBBEAN 52
Type	motor yacht
LOA (m)	15,86
Beam (m)	4,45
Draft (m)	1,30
Headroom (m)	1,98
Year built	1994
Builder	Sunseeker
Country	United Kingdom
Displacement (t)	25
CE norm	NA
Hull material	GRP
Hull colour	white
Hull shape	deep-V
Superstructure material	GRP
Rubbing strake	stainless steel
Deck material	GRP
Deck finish	non-skid moulded in
Superstructure deck finish	non-skid moulded in
Cockpit deck finish	teak
Antifouling (year)	yes
Window frame	stainless steel
Window material	tempered glass
Deckhatch	yes
Portholes	stainless steel
Flybridge	yes
Flybridge cockpit cover	yes
Radar arch	
Fuel tank (litre)	2 x 1200
Level indicator (fuel tank)	yes



SUNSEEKER CARIBBEAN 52

Freshwater tank (litre)	800
Level indicator (freshwater)	yes
Wheel steering	hydraulic
Inside helm position	yes
Flybridge helm position	hydraulic

ACCOMMODATION

Cabins	4
Berths	7
Interior	Cream gloss
Floor	carpet
Open cockpit	yes
Saloon	yes
Headroom saloon (m)	1,98
Heating	Reverse cycle air conditioning
Air-conditioning	reverse cycle airco
Chart table	yes
Dinette	Headroom 2,20 m
Sliding door to cockpit	yes
Galley	yes
Countertop	corian
Sink	stainless steel
Cooker	electric Neff 2-burner
Oven	Tristar
Fridge	Liebherr (2019)
Freezer	Liebherr
Hot water system	220V + engine
Water pressure system	electrical
Kettle	yes
Coffee maker	yes
Crockery	yes



SUNSEEKER CARIBBEAN 52

Owners cabin	French bed Forward, headroom 1,94 m
Bed length (m)	2,00 x 1,80
Wardrobe	drawers and shelves
Bathroom	en suite Headroom 1,86 m
Toilet	In the bathroom
Toilet system	electric Jabsco
Wash basin	in the bathroom
Shower	separate In the bathroom, headroom 1,89 m
Extra info	TV
Guest cabin 1	twin single Port, headroom 1,94 m
Bed length (m)	1,95 x 0,70 (2 x)
Wardrobe	drawers and shelves
Bathroom	shared Headroom 1,88 m
Toilet	In the bathroom
Toilet system	electric Jabsco
Wash basin	In the bathroom
Shower	separate In the bathroom, headroom 1,88 m
Guest cabin 2	twin single Starboard, headroom 1,95 m
Bed length (m)	1,95 x 0,65 (2 x)
Wardrobe	drawers and shelves
Extra info	TV
Guest cabin 3	single bed Access via galley
Bed length (m)	1,90 x 0,60
Wardrobe	shelves
Toilet	separate
Toilet system	manual
Wash basin	at the toilet
Flybridge	yes
Extra info	New upholstery and carpets 2020

MACHINERY



SUNSEEKER CARIBBEAN 52

No of engines	2
Make	Detroit Diesel
Type	8V92TA
HP	760
kW	559,36
Fuel	diesel
Year installed	1994
Maximum speed (kn)	25 (governed)
Cruising speed (kn)	21
Engine hours	925
Engine cooling system	freshwater heat exchanger
Drive	V-drive
Engine controls	electrical & bowden cable Kobelt (2021)
Gearbox	hydraulic
Bowthruster	electric Vetus
Exhaust	watercooled
Propeller type	fixed
Propeller blades	4
Propeller shaft material	stainless steel
Shaft lubrication	water
Manual bilge pump	yes
Electric bilge pump	yes
Electrical installation	12 V, 24 V, 220 V
Generator	silent separator Fischer Panda 5000i (2019)
Running hours generator	104
Batteries	yes
Battery monitor	yes
Battery charger	2 x Victron Blue Power 24/12
Battery charger/inverter	Victron Quattro 24/3000/70
Shorepower	with cable
Trimtabs	yes
Extra info	Sterling BBC 241230 step down transformer



NAVIGATION

Compass	yes
Compass on flybridge	yes
Electric compass	In autopilot (function not guaranteed)
Depth sounder	Robertson
Depth sounder/log	yes
Log	Robertson
Repeater	Depth, speed,, autopilot at flybridge helm
VHF	Shipmate RS8400
Autopilot	Robertson (function not guaranteed)
Rudder angle indicator	yes
Radar	Furuno
Plotter/GPS	Geonav 11 Flash
Navtex	Furuno Navtex NX-300
Navigation lights	yes
Searchlight	Sanshin with remote control

EQUIPMENT

Cockpit cover	yes
Cockpit cushions	yes
Cockpit table	yes
Cockpit chairs	yes
Bathing platform	yes
Boarding ladder	stainless steel
Transom door	yes
Gangway	Euromar hydraulic
Deck shower	yes
Anchor	Delta
Anchor chain	yes
Windlass	electrical Maxwell (2021)
Sea railing	stainless steel



SUNSEEKER CARIBBEAN 52

Grab rail (superstructure)	stainless steel
Pulpit	yes
Wiper	yes
Horn	
Fenders	yes
Mooring lines	yes
TV	Philips in saloon
TV receiver	yes
Satellite	Canus
Radio-cd player	JVC
DVD player	2 x
Cockpit speakers	2 x
Speakers in salon	2 x
Speakers in cabin	2 x on flybridge
Clock - barometer	yes
Fire extinguisher	yes
Latest extinguisher survey	Not known
Extinguisher in engine room	yes
Auto extinguisher system	yes



SUNSEEKER CARIBBEAN 52



SUNSEEKER CARIBBEAN 52



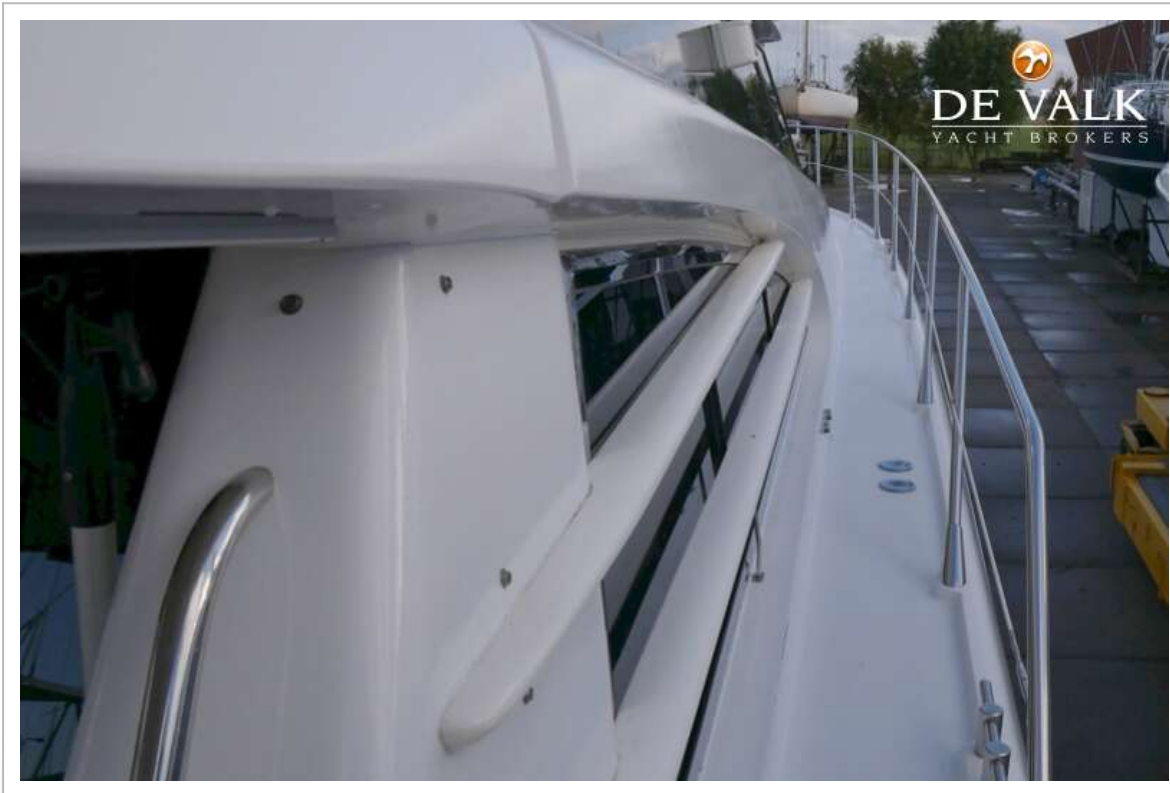
SUNSEEKER CARIBBEAN 52



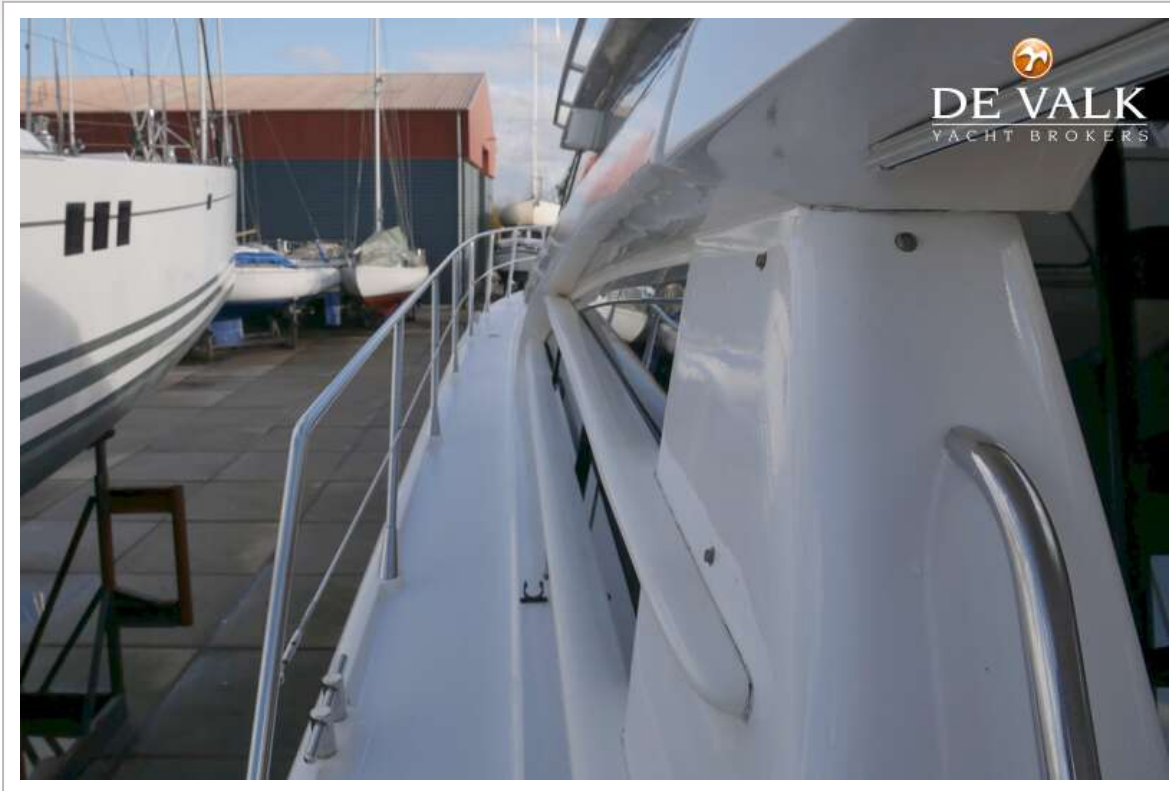
SUNSEEKER CARIBBEAN 52



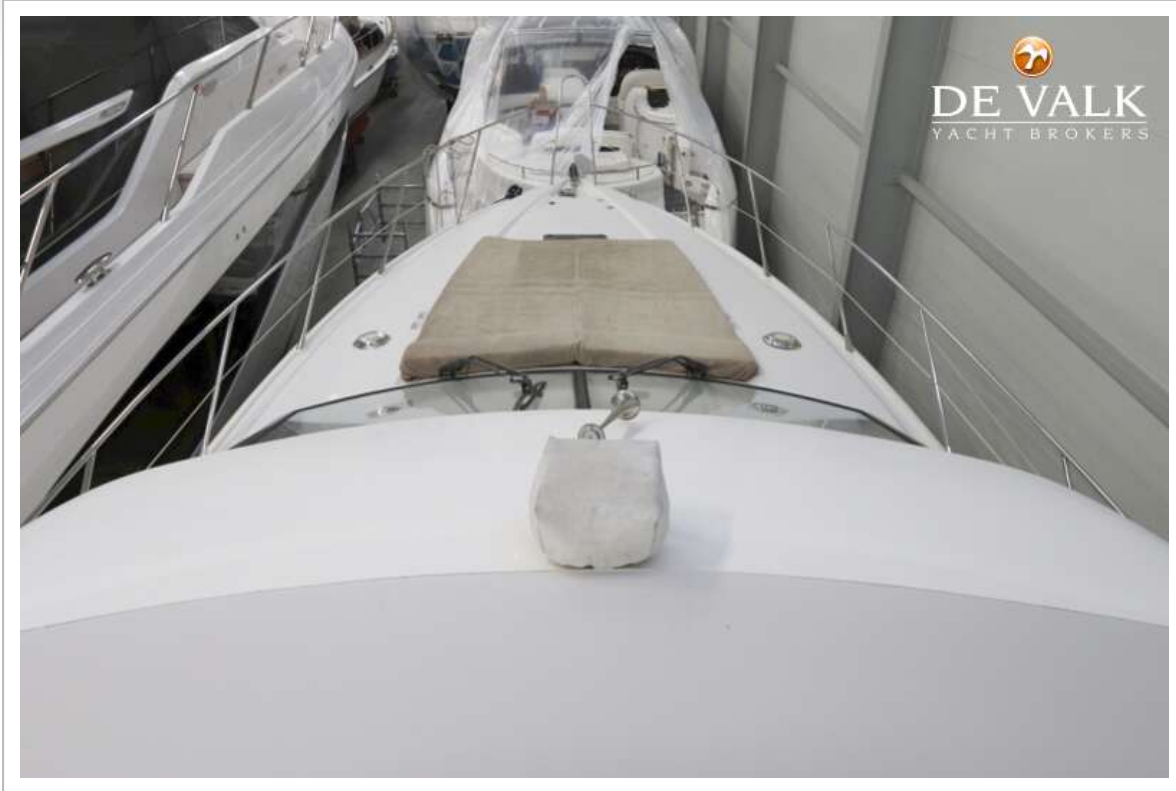
SUNSEEKER CARIBBEAN 52



SUNSEEKER CARIBBEAN 52



SUNSEEKER CARIBBEAN 52



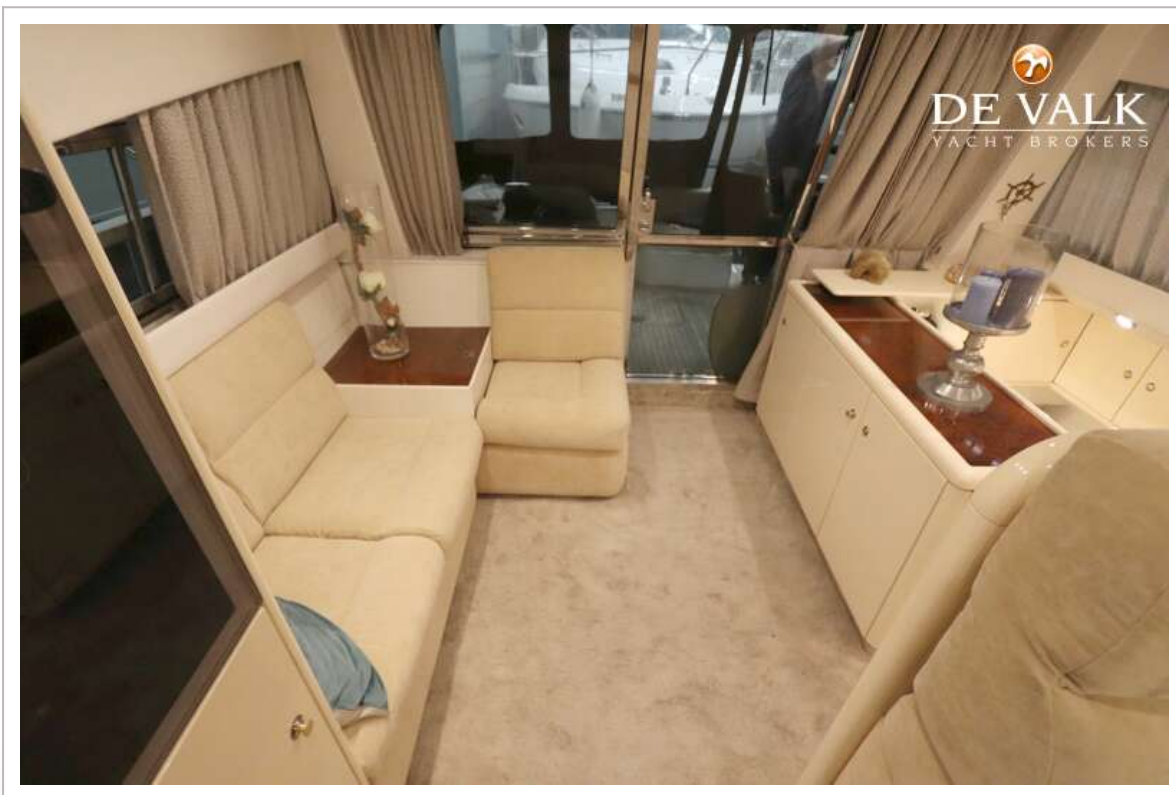
SUNSEEKER CARIBBEAN 52



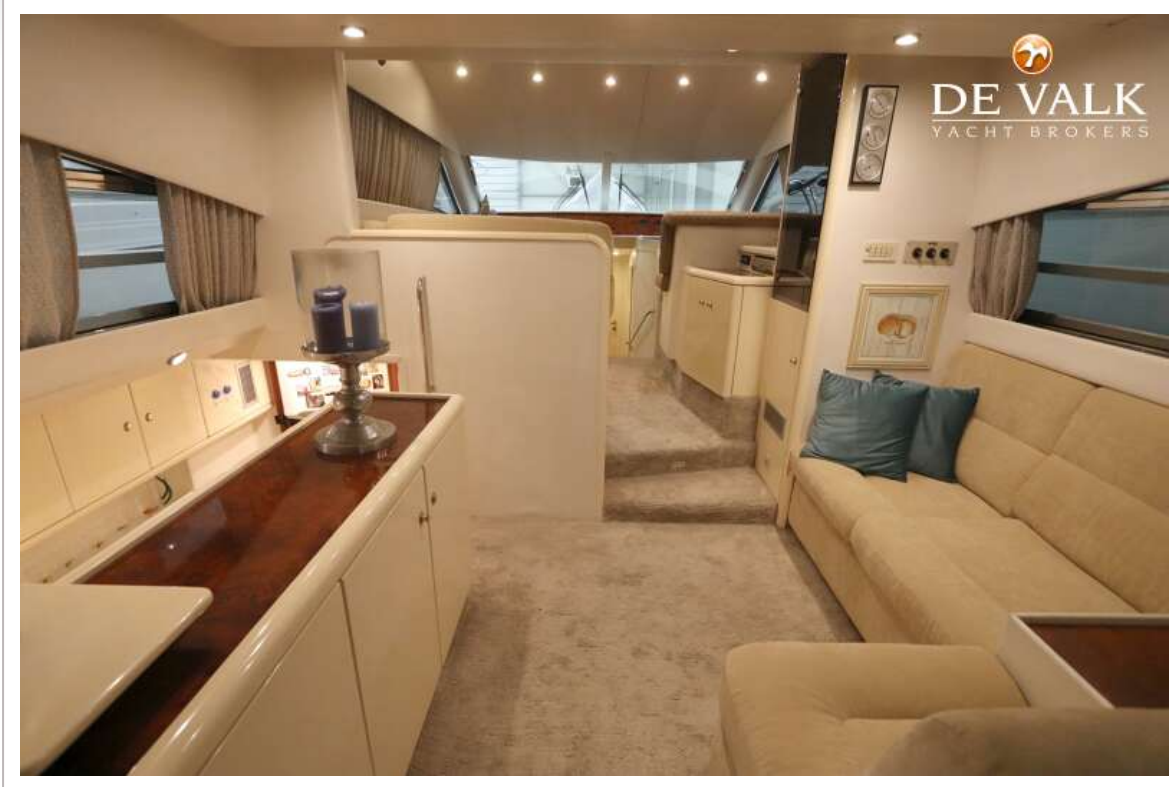
SUNSEEKER CARIBBEAN 52



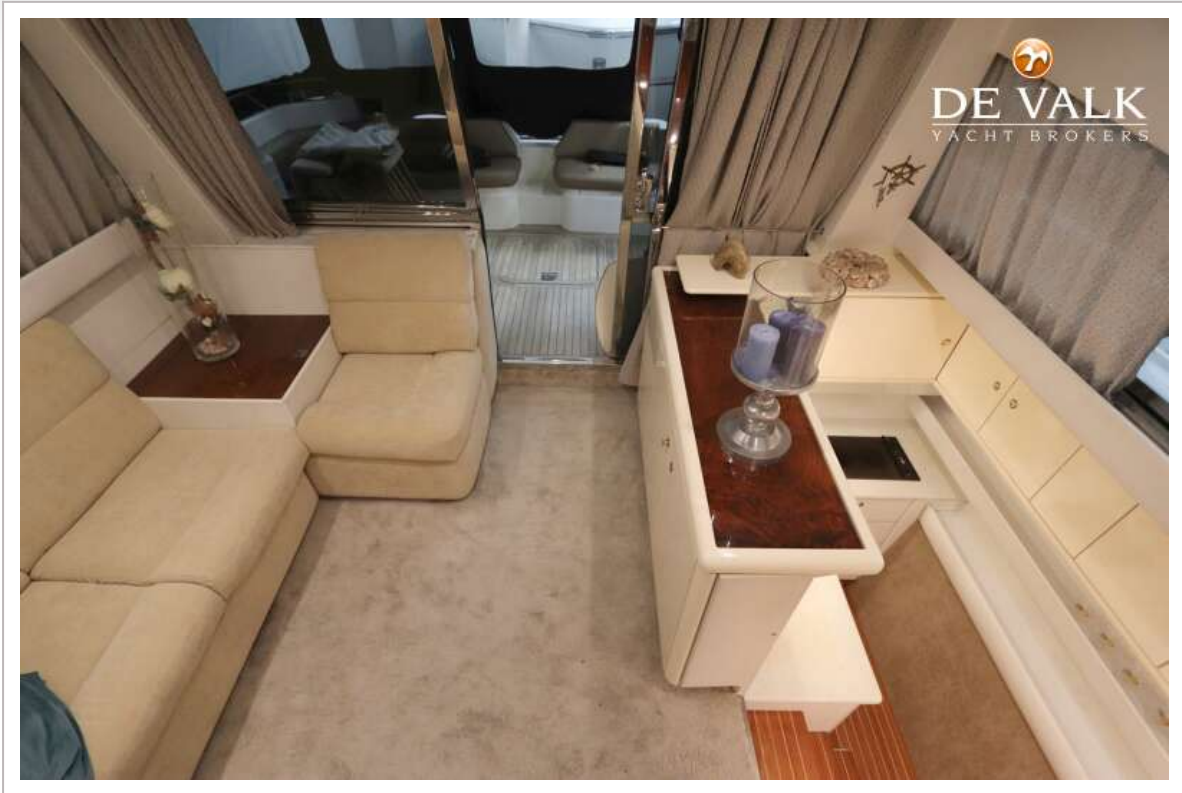
SUNSEEKER CARIBBEAN 52



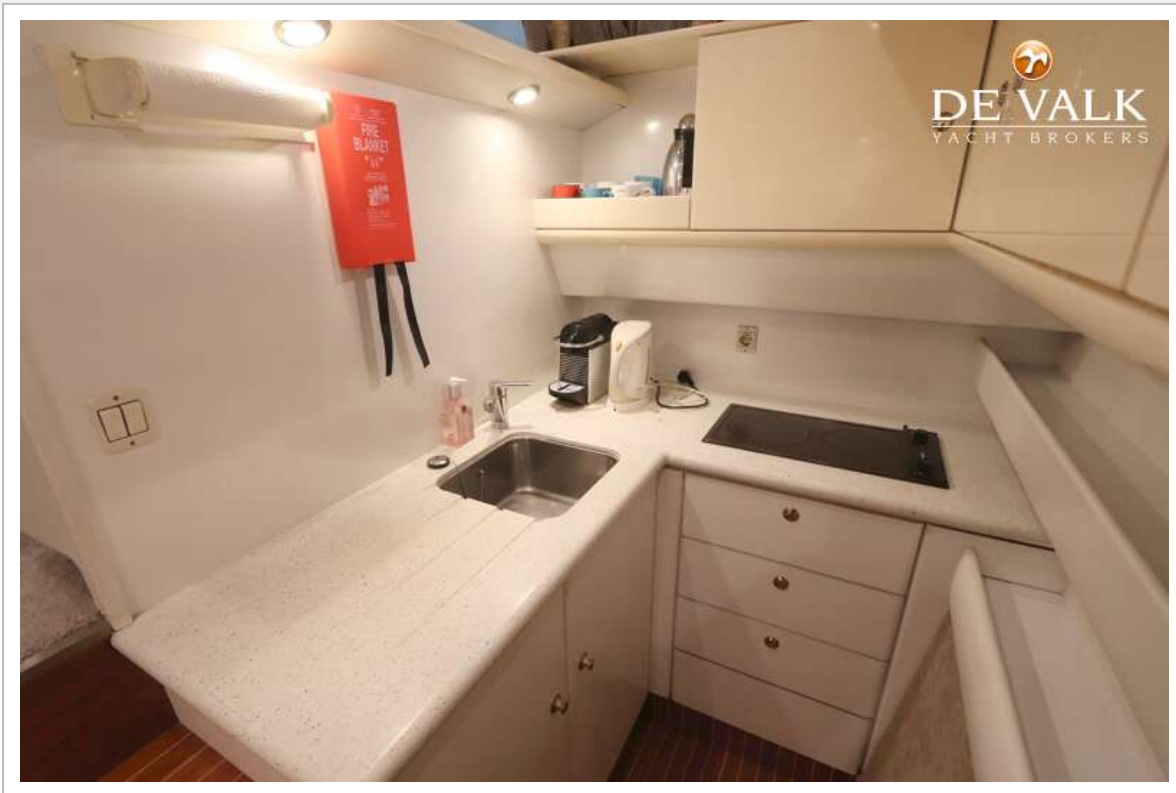
SUNSEEKER CARIBBEAN 52



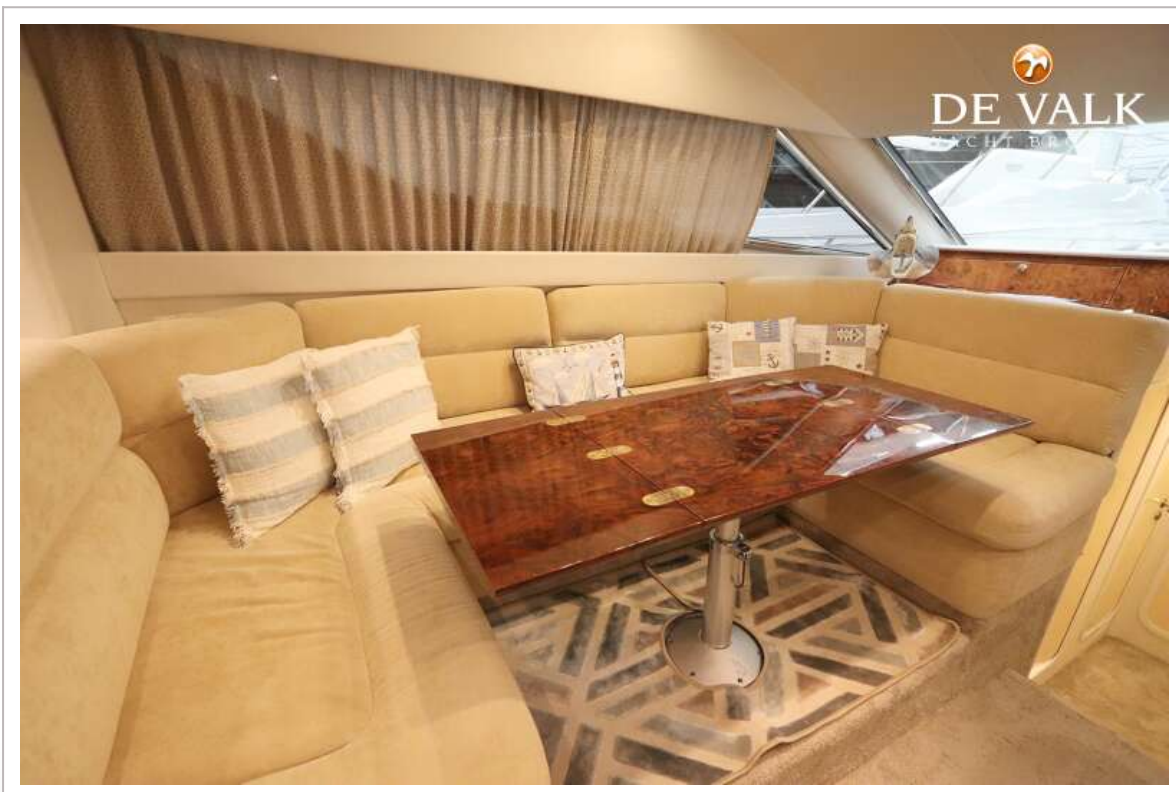
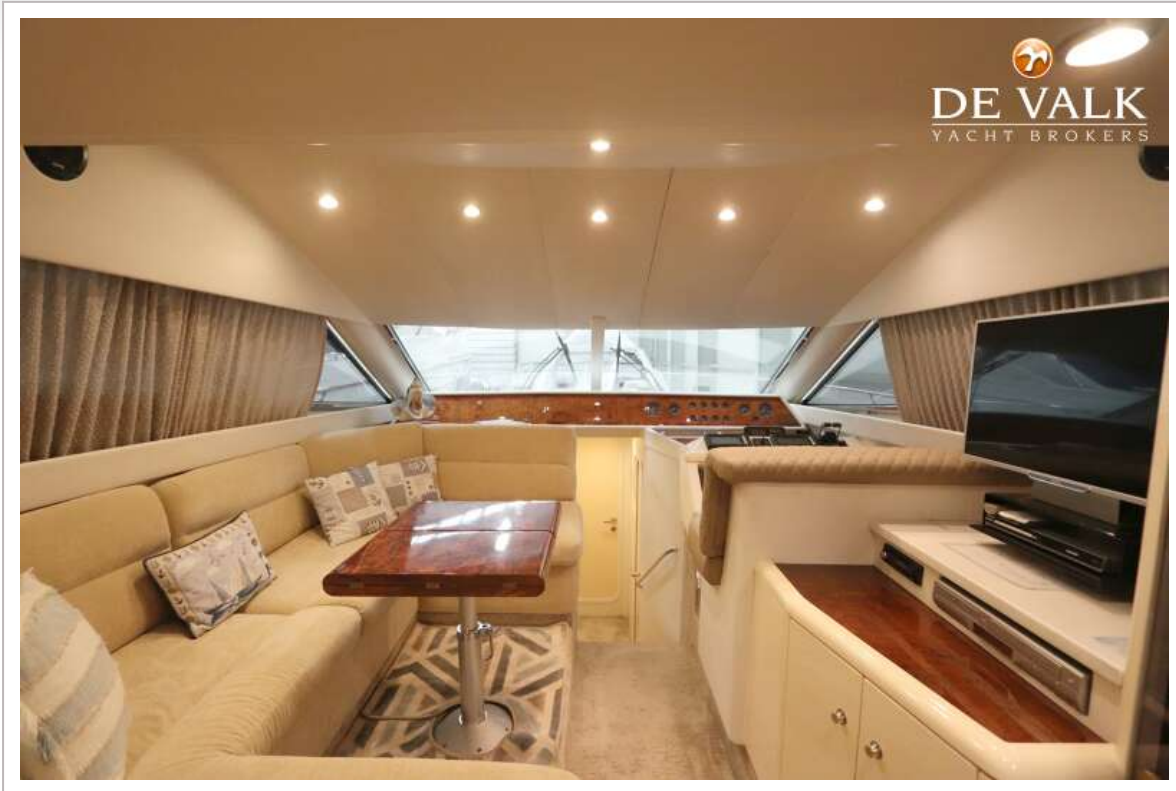
SUNSEEKER CARIBBEAN 52



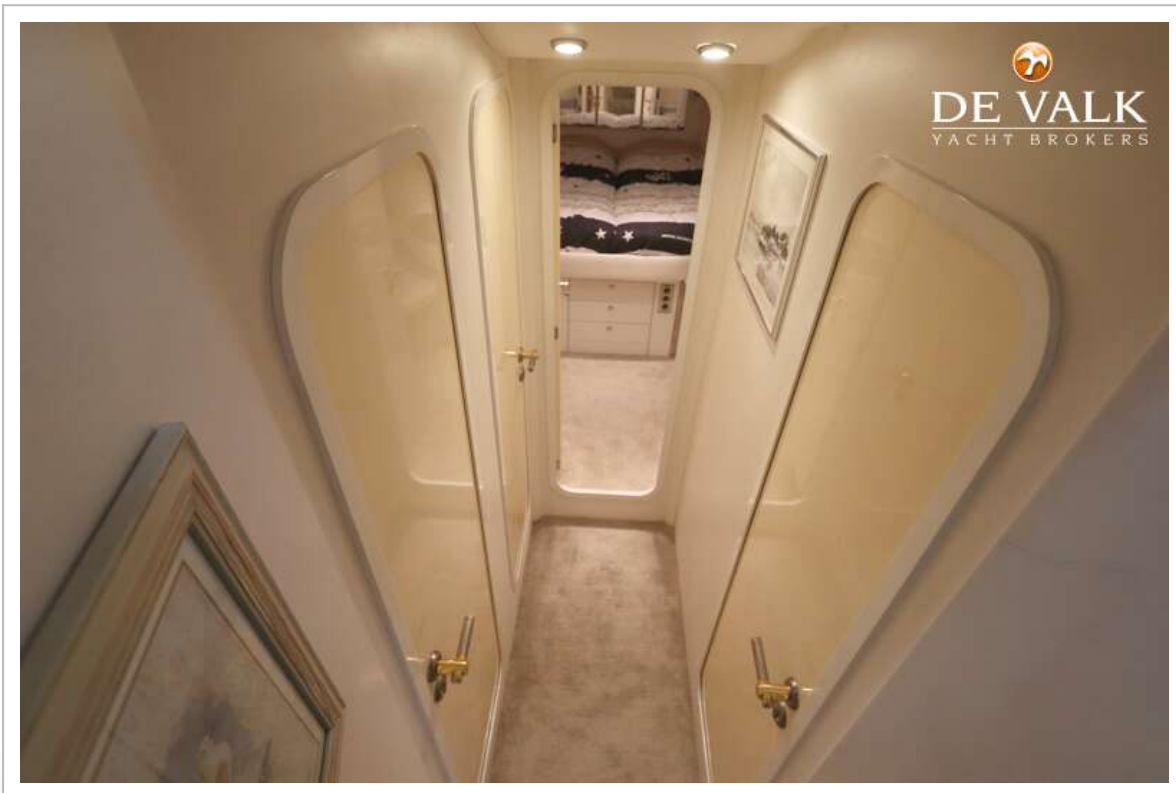
SUNSEEKER CARIBBEAN 52



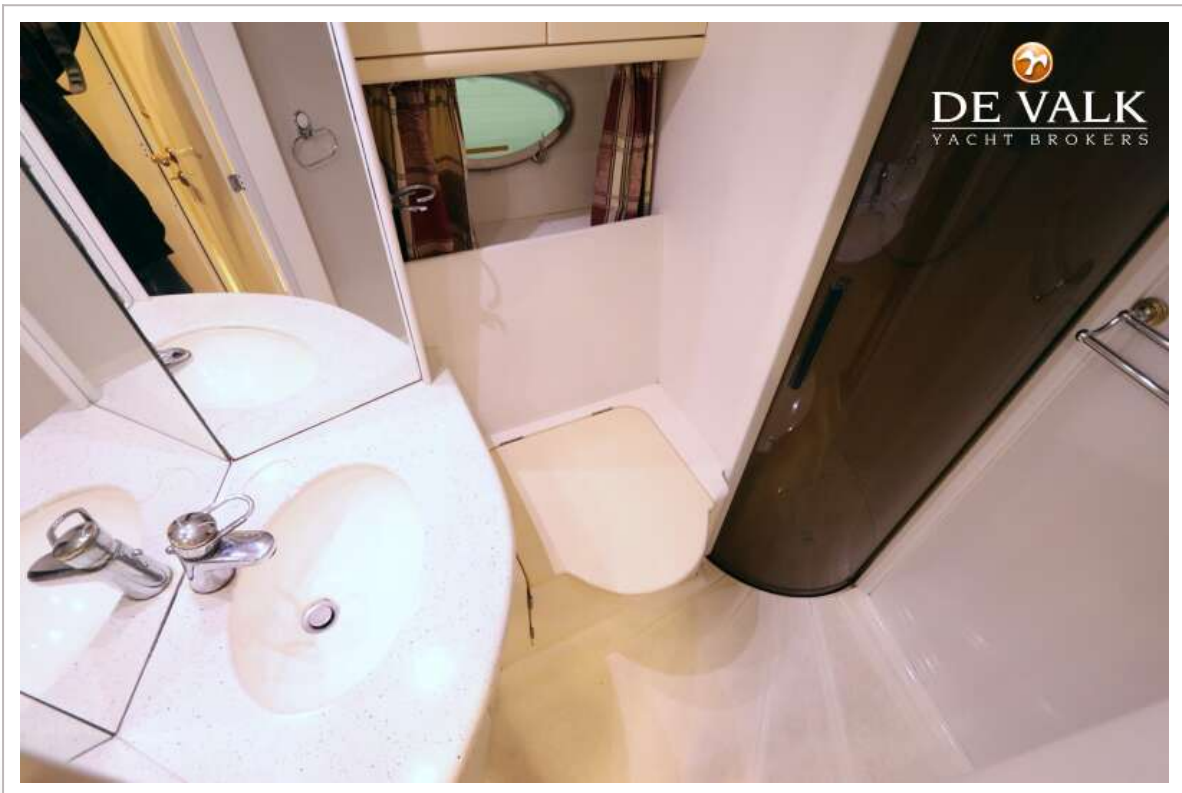
SUNSEEKER CARIBBEAN 52



SUNSEEKER CARIBBEAN 52



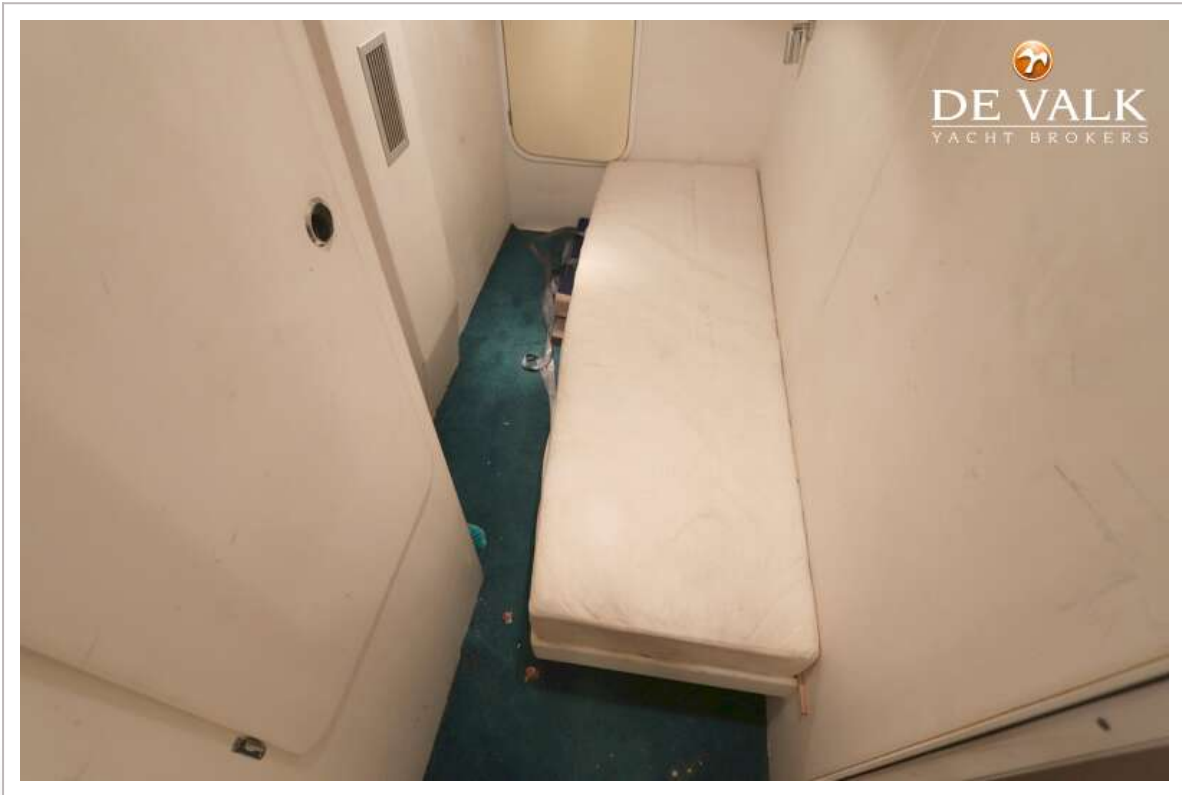
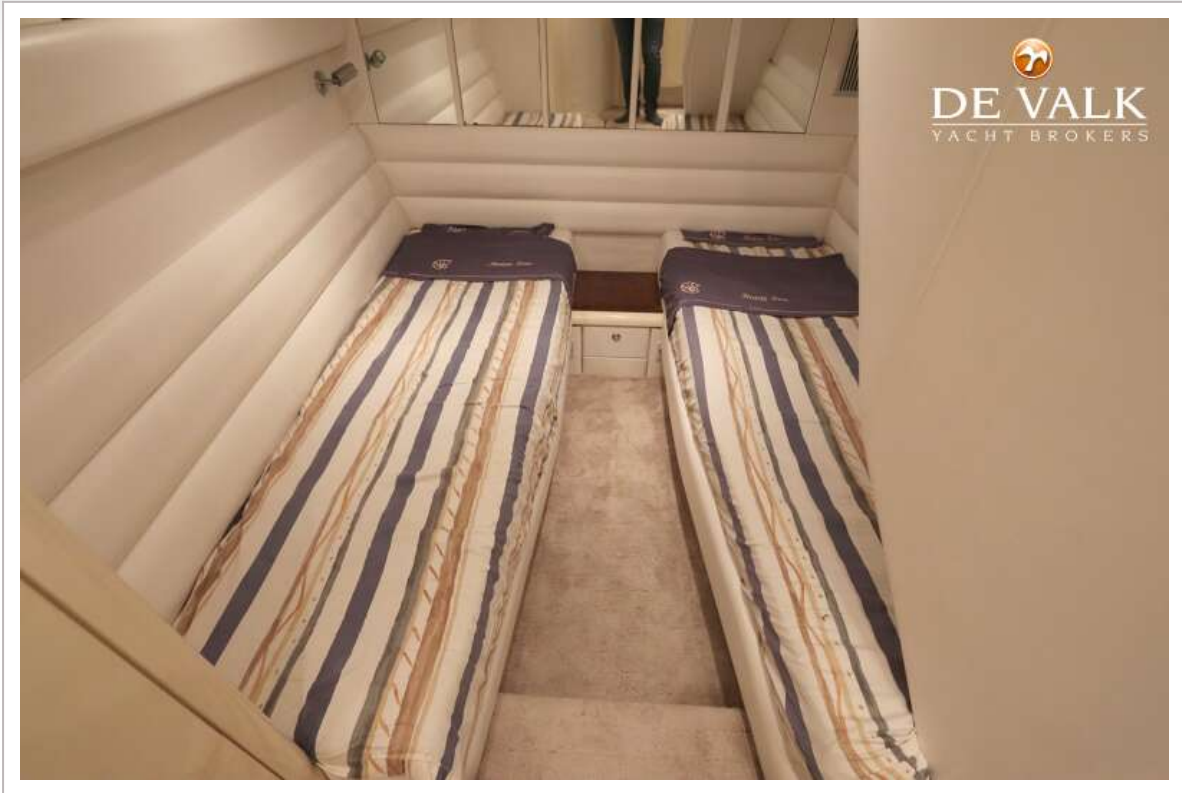
SUNSEEKER CARIBBEAN 52



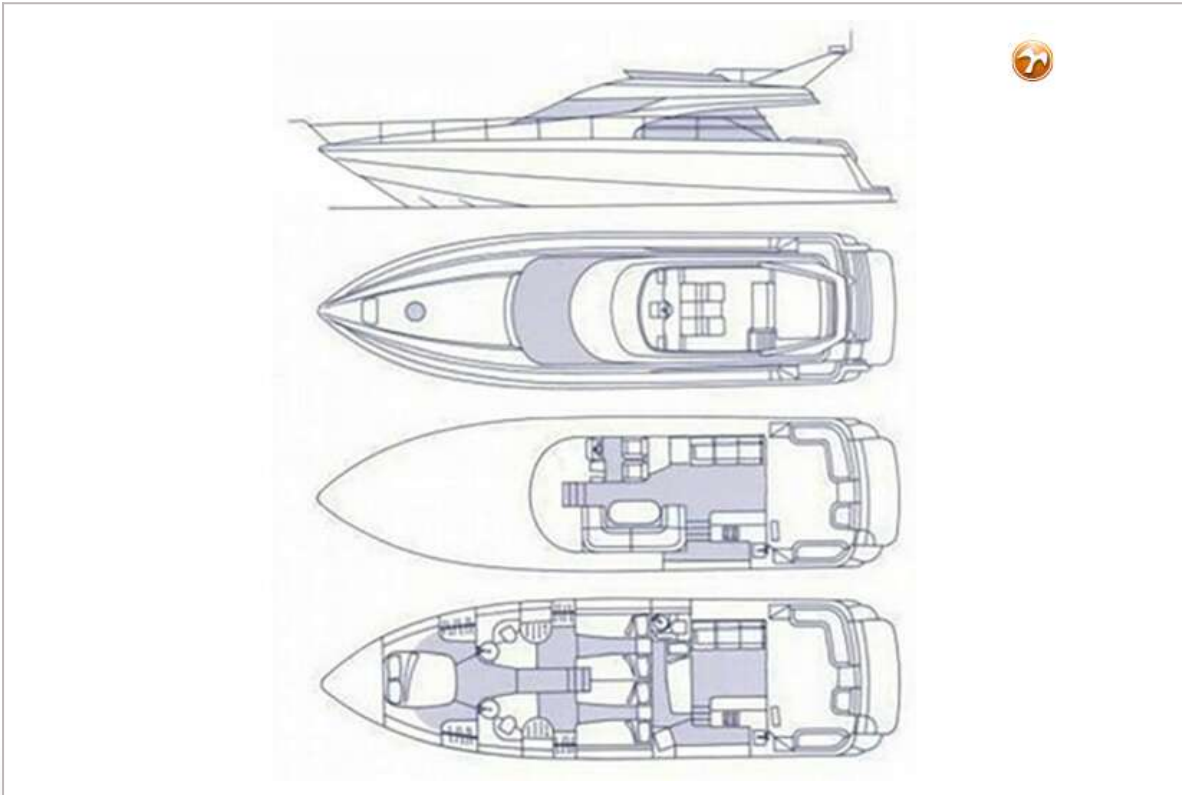
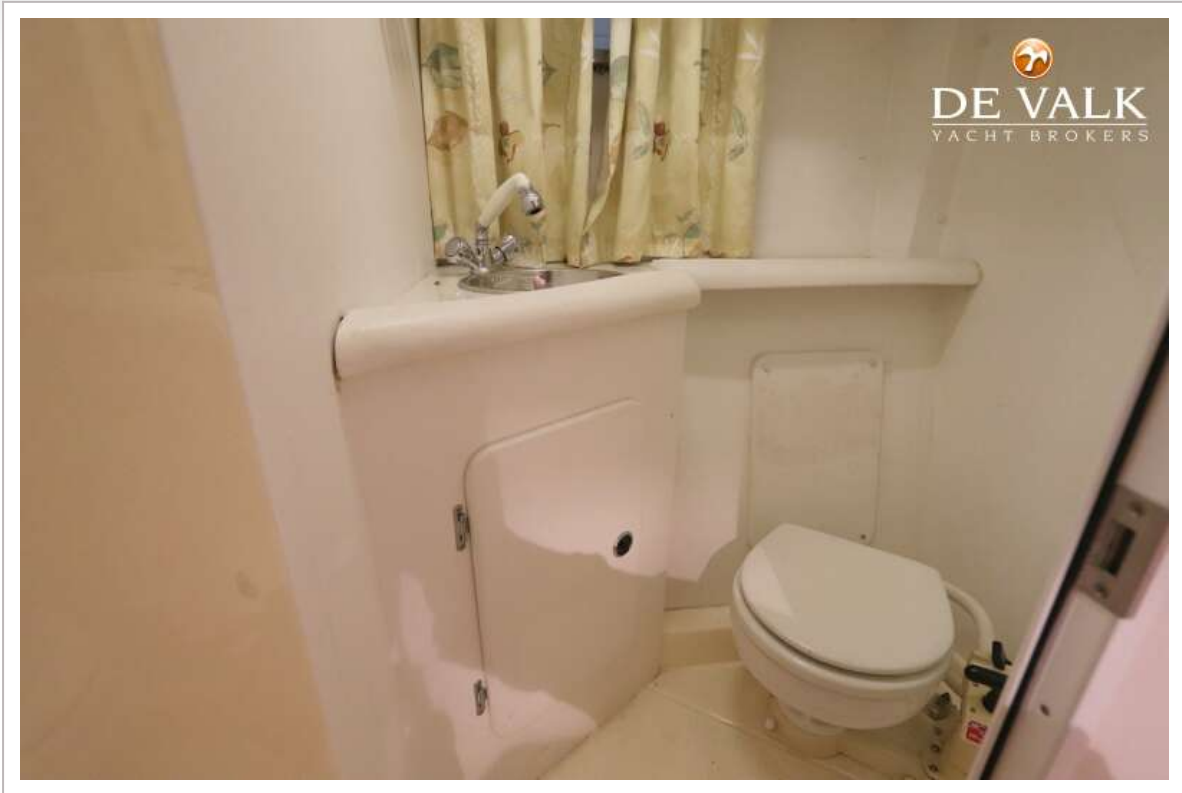
SUNSEEKER CARIBBEAN 52



SUNSEEKER CARIBBEAN 52



SUNSEEKER CARIBBEAN 52



SUNSEEKER CARIBBEAN 52



SUNSEEKER CARIBBEAN 52



