



TUNA 40.2

TUNA 40.2

BROKER'S COMMENTS

The Tuna 40.2 is fitted with stabilizers, reverse cycle airco and bowthruster. This new built yacht(2009) is the Better and personalised version of the Tuna 40. The new Tuna 40 is more then suitable for a comfortable run on the inland and coastal waters. Vat is deductible.

Mark Hesselmans

SPECIFICATIONS

Dimensions	12.20 x 4.35 x 1.10 (m)	Builder	Dutch Bay Yachts
Built	2009	Cabins	3
Material	GRP	Berths	6
Engine(s)	2 x Yanmar 4JH4-TE diesel	Hp/Kw	2 x 75.00 (hp), 55.20 (kw)
Asking price	sold (VAT)	Lying	at sales office

CONTACT

Sales office	De Valk Loosdrecht B.V.	Telephone	+31 (0)35 582 90 30
Address	't Breukeleveense Meentje 6 1231LM Loosdrecht / Wijdmeren NL	E-mail	loosdrecht@devalk.nl

DISCLAIMER

These particulars are given in good faith as supplied but cannot be guaranteed.



GENERAL

Model	TUNA 40.2
Type	motor yacht
LOA (m)	12,20
Beam (m)	4,35
Draft (m)	1,10
Headroom (m)	1,90
Year built	2009
Launched	2013
Builder	Dutch Bay Yachts
Country	Turkey
CE norm	B
Hull material	GRP
Hull colour	off-white
Bilge keels	yes
Superstructure material	GRP
Rubbing strake	fender rope
Deck material	GRP
Deck finish	teak
Cockpit deck finish	teak
Window material	glass
Deckhatch	yes
Fuel tank (litre)	2x 450
Fuel tank 2 (litre)	yes
Level indicator (fuel tank)	yes
Freshwater tank (litre)	1x 1000
Level indicator (freshwater)	yes
Blackwater tank (litre)	1x 120
Level indicator (blackwater)	yes
Wheel steering	hydraulic
Inside helm position	yes



ACCOMMODATION

Cabins	3
Berths	6
Interior	teak
Floor	teak and holly
Open cockpit	yes
Saloon	yes
Headroom saloon (m)	1,90
Air-conditioning	reverse cycle airco
Dinette	yes
Opening door to cockpit	yes
Countertop	corian
Sink	stainless steel
Cooker	calor gas
Fridge	Isotherm
Hot water system	220V + engine
Water pressure system	electrical
Owners cabin	double bed
Bed length (m)	2
Wardrobe	hanging and shelves
Bathroom	shared
Toilet	shared
Toilet system	electric
Shower	shared
Guest cabin 1	double bed
Bed length (m)	2
Guest cabin 2	twin single
Bed length (m)	2
Wardrobe	hanging and shelves

MACHINERY



No of engines	2
Make	Yanmar
Type	4JH4-TE
HP	75
kW	55.20
Fuel	diesel
Cruising speed (kn)	7
Engine hours	1315
Drive	sail-drive
Engine controls	bowden cable
Gearbox	hydraulic
Bowthruster	electric MAXPower
Propeller type	fixed
Electric bilge pump	yes
Electrical installation	12V/230V
Start battery	1x PS + 1x SB 12V/110Ah
Service battery	4x 12V/220Ah
Battery monitor	Victron
Battery charger/inverter	Victron 12V/3000/120A
Shorepower	with cable
Stabilizers	Naiad Dynamics Roll Stabilizers

NAVIGATION

Depth sounder/log	Raymarine ST60+
VHF	2X Raymarine
Autopilot	Raymarine ST6002
Plotter/GPS	Raymarine C80
Navigation lights	yes

EQUIPMENT

Bimini	yes
--------	-----



Cockpit cushions	yes
Cockpit table	yes
Bathing platform	yes
Deck shower	yes
Anchor	yes
Anchor chain	yes
Windlass	electrical Quick
Deck wash	yes
Sea railing	stainless steel
Grab rail (superstructure)	stainless steel
Wiper	4x
Horn	electric
Fenders	yes
Radio-cd player	Kenwood
Speakers in salon	yes



TUNA 40.2



TUNA 40.2



TUNA 40.2

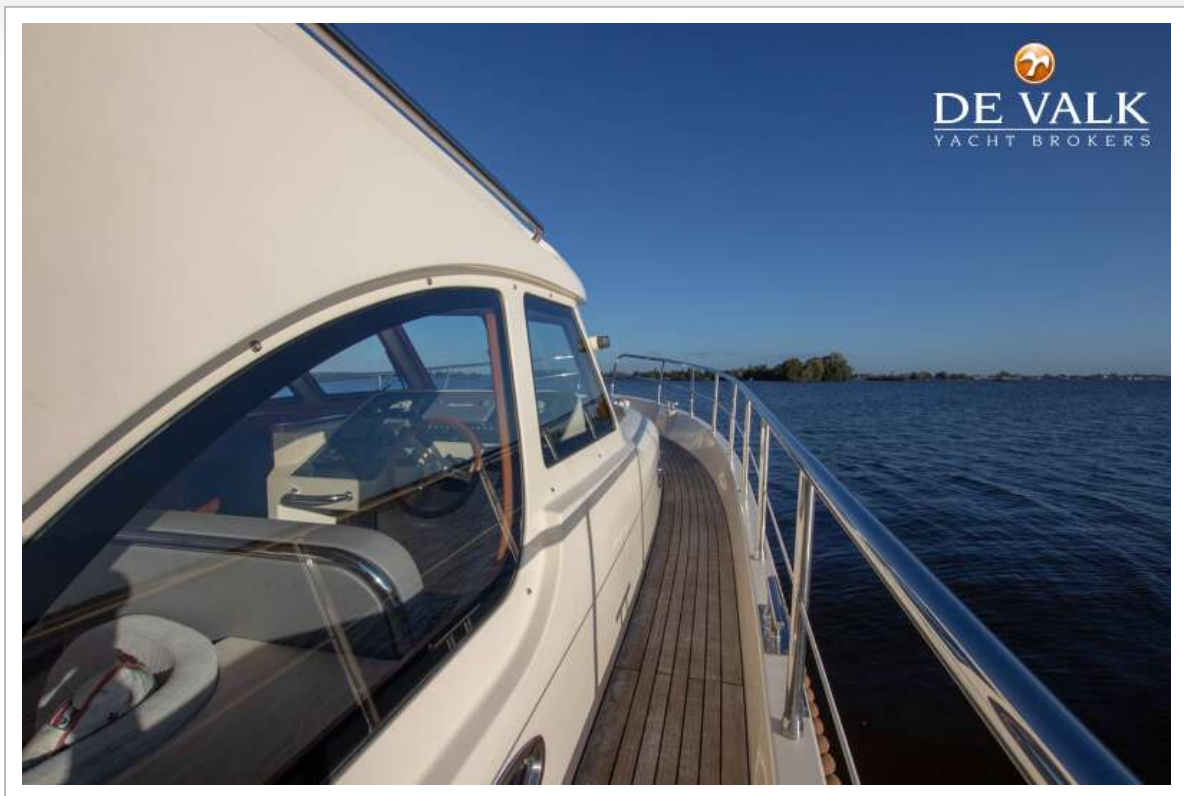


TUNA 40.2



TUNA 40.2





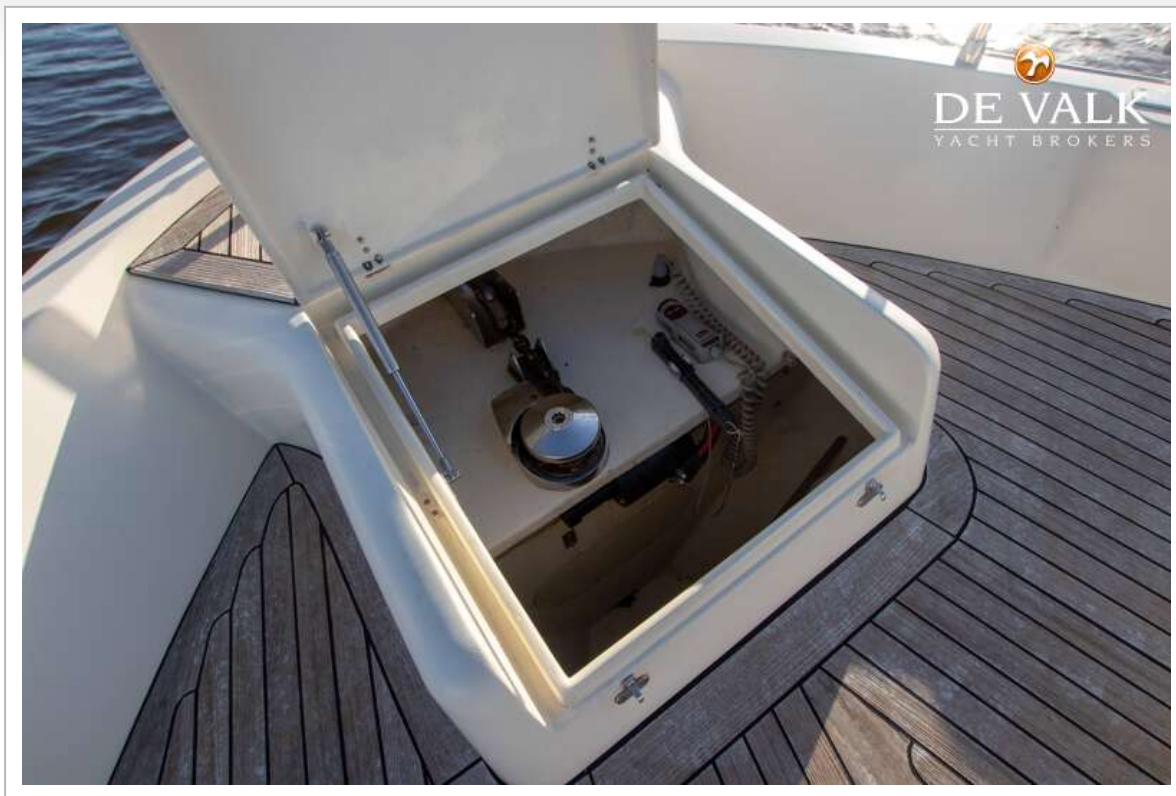
TUNA 40.2



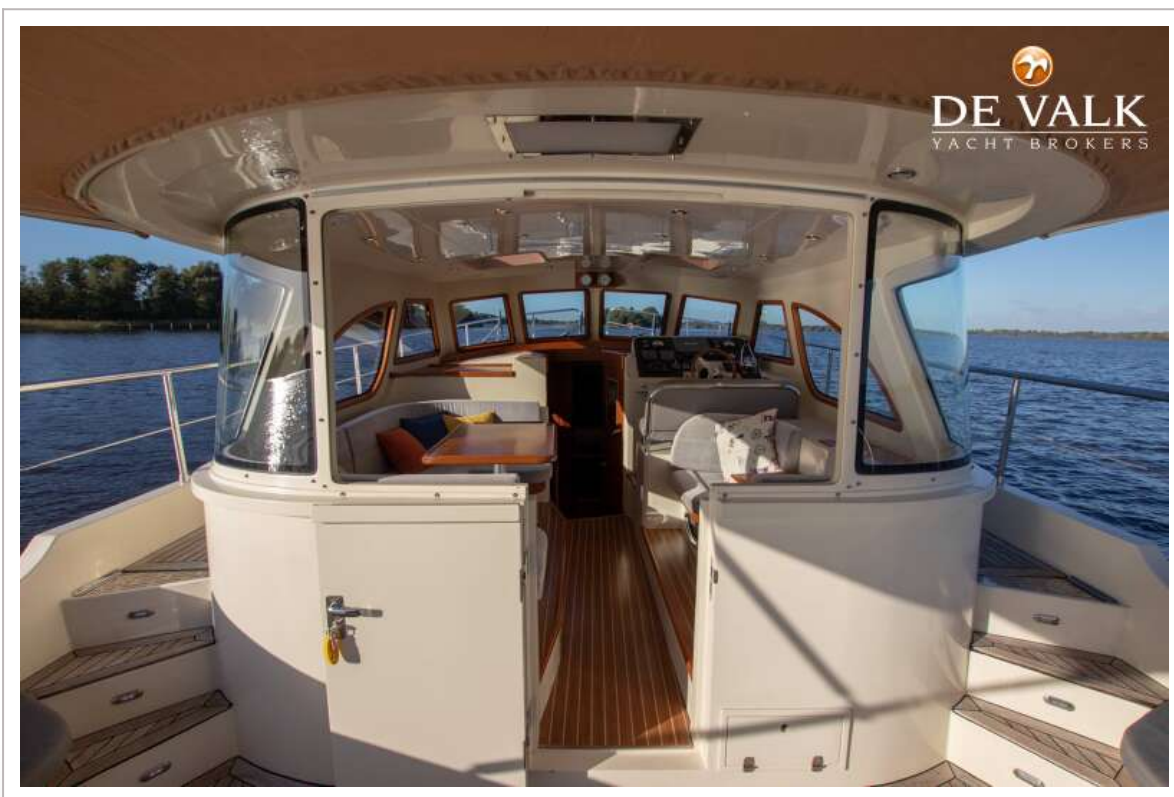
TUNA 40.2



TUNA 40.2



TUNA 40.2



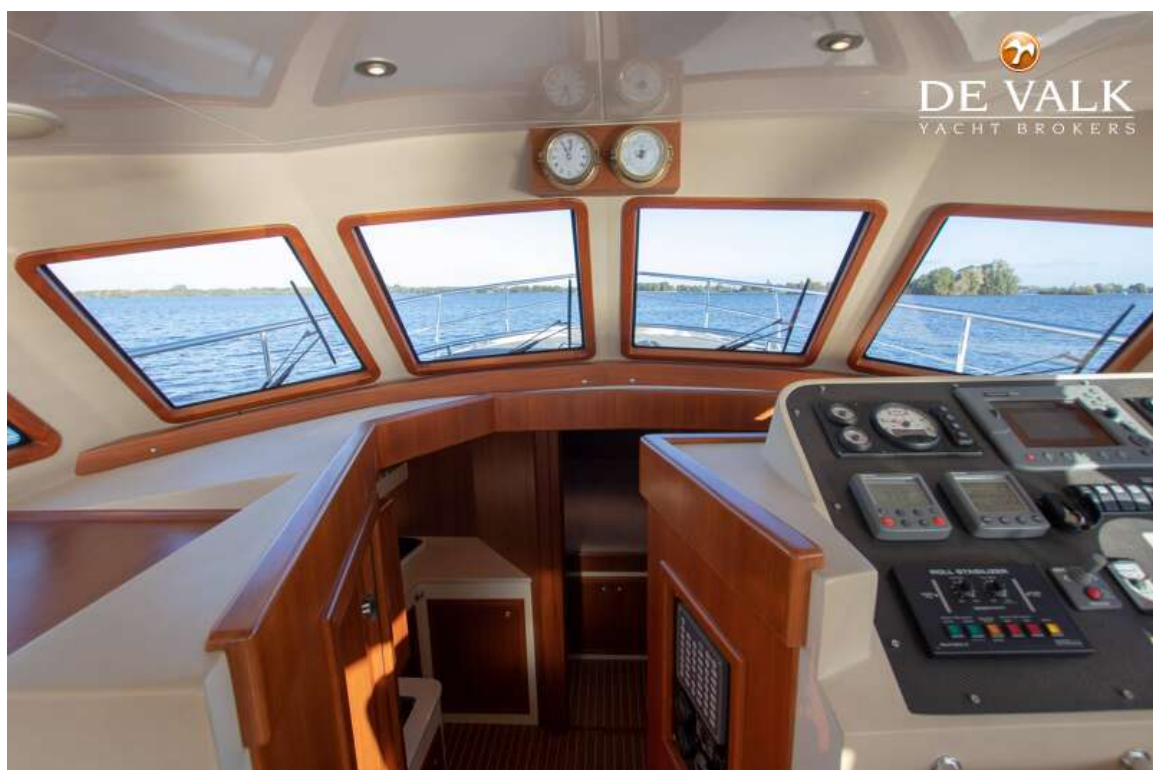
TUNA 40.2



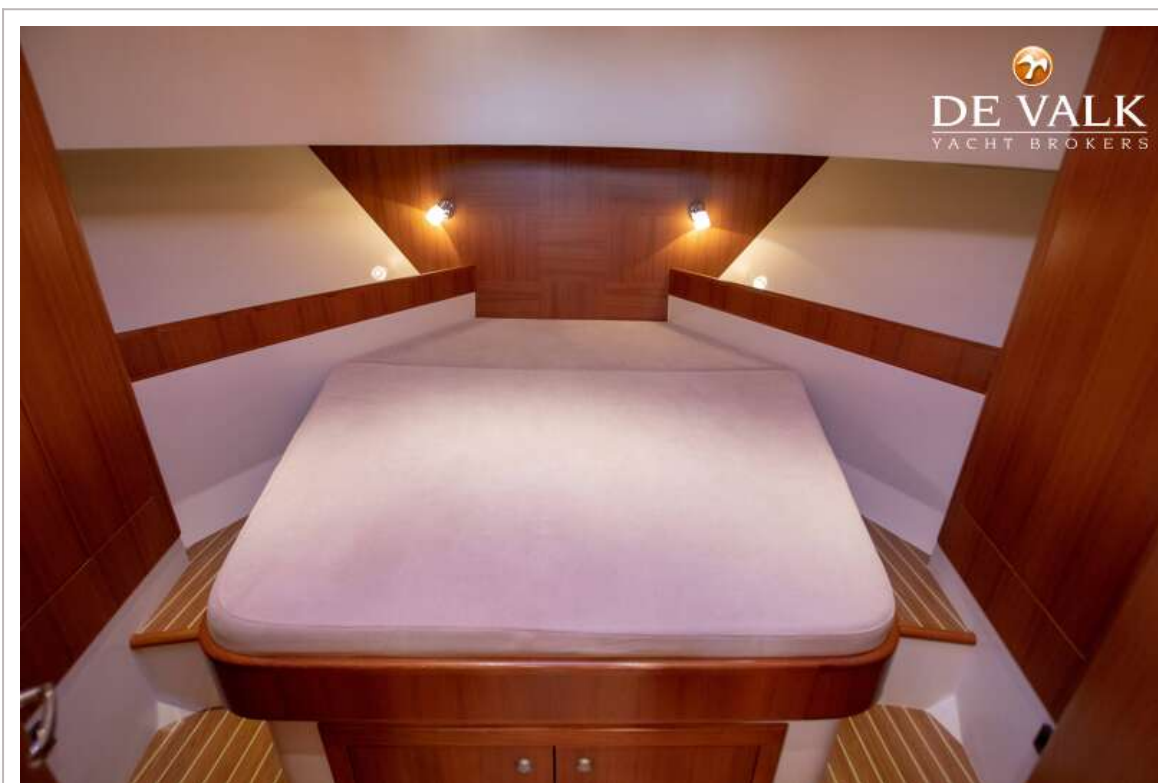
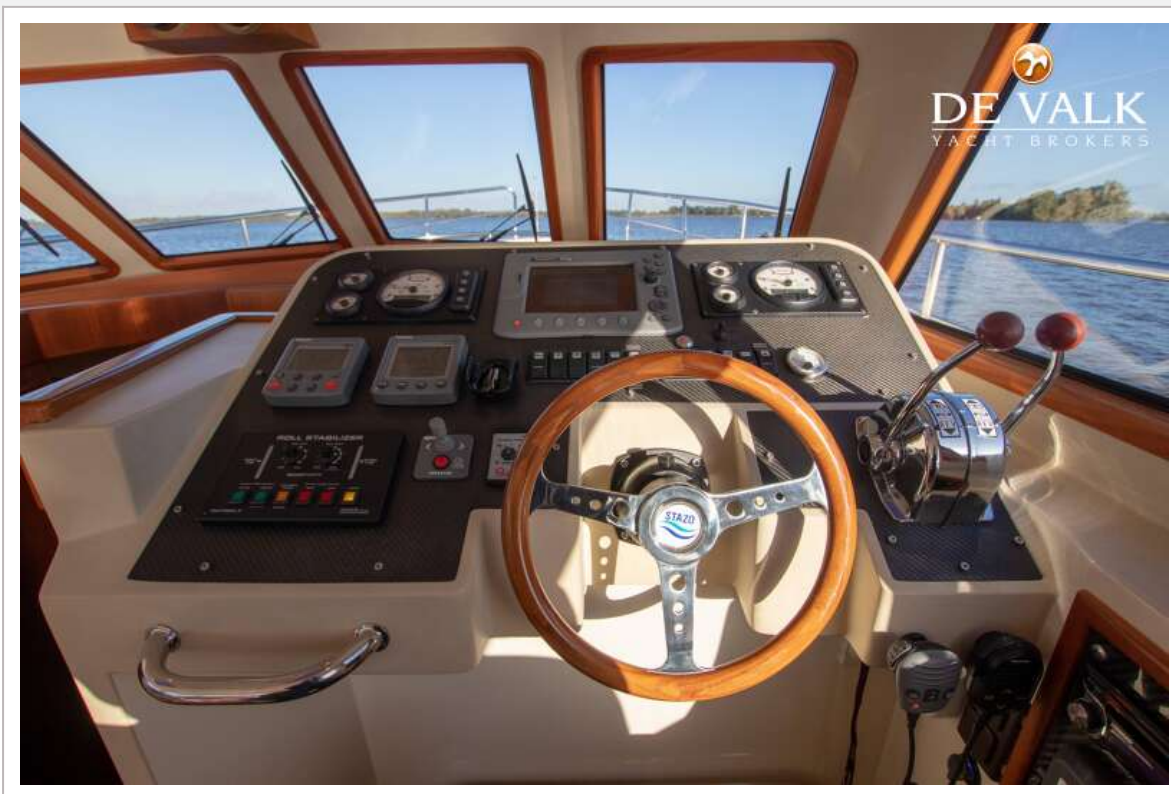
TUNA 40.2

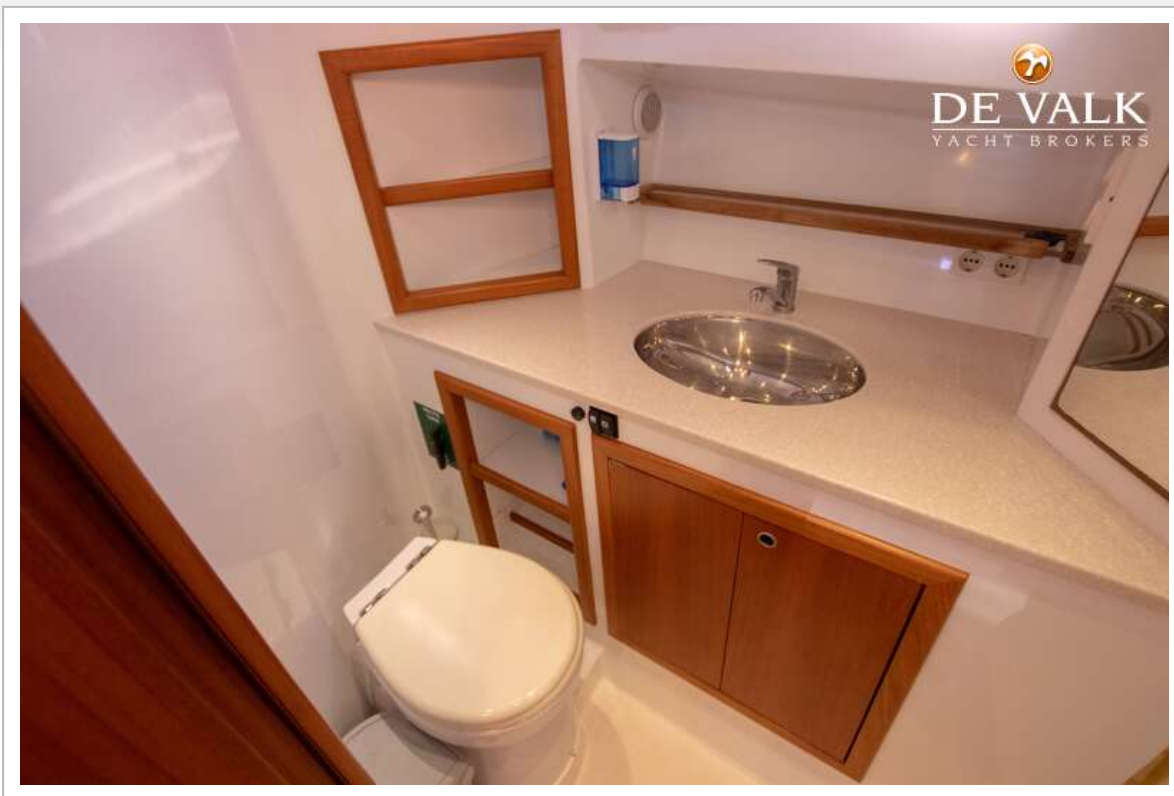


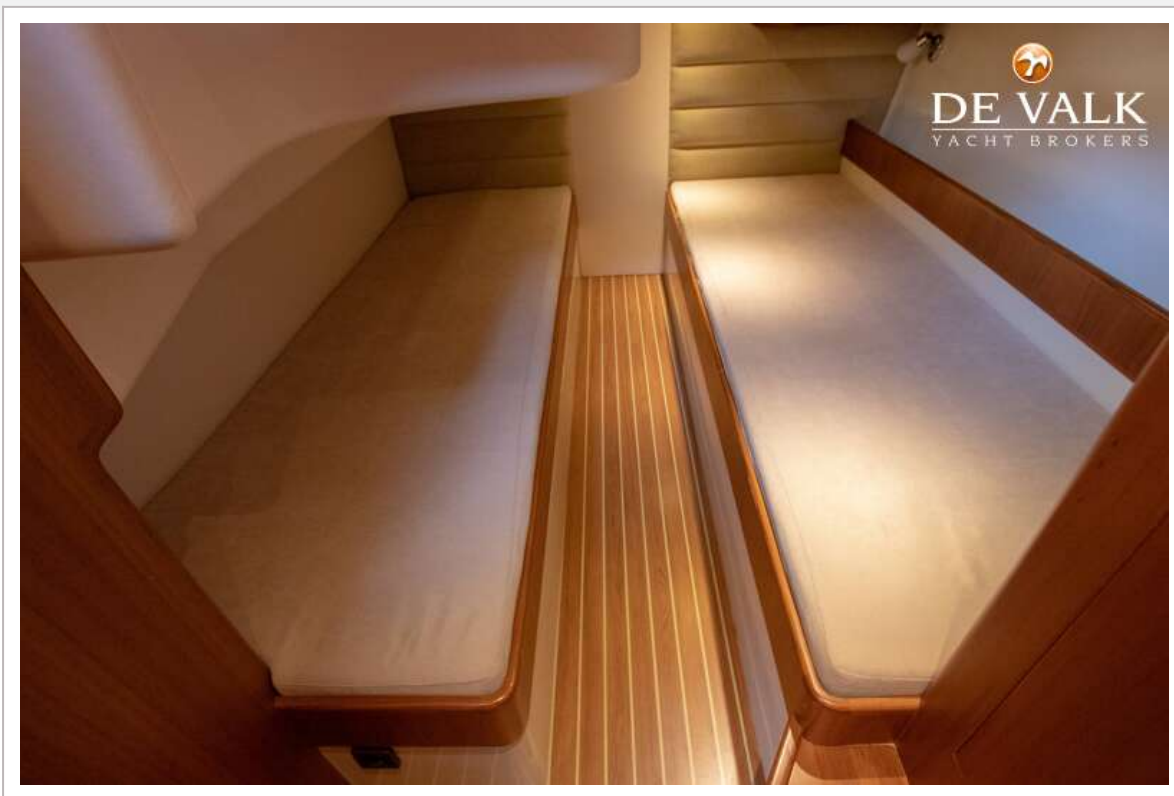
TUNA 40.2



TUNA 40.2







TUNA 40.2



TUNA 40.2

