



DE VALK  
YACHT BROKERS



## SICHTERMAN 16.30 HT



DE VALK  
YACHT BROKERS

# SICHTERMAN 16.30 HT

## BROKER'S COMMENTS

Meet this beautiful Sichterman 16.30 HT, built in 2019 and launched in 2020. This elegant, yet sturdy fast sailing boat gives you all the comfort you may expect on board by means of air conditioning and heating. The very extensive battery pack makes it virtually self-sufficient. Equipped with two very solid Cummins engines with a capacity of 355 hp, the bow and stern thrusters ensure ideal manoeuvrability. Make an appointment for a viewing on location. This boat is offered in cooperation with Workumer Jachtservice, the proud builder of this beautiful motorboat.

*Sjoerd Paddenburg*

## SPECIFICATIONS

<b>Dimensions</b>	16.30 x 4.67 x 0.90 (m)	<b>Builder</b>	Workumer Jachtservice
<b>Built</b>	2019	<b>Cabins</b>	2
<b>Material</b>	Aluminium	<b>Berths</b>	6
<b>Engine(s)</b>	2 x Cummins QSB6.7355HO1 diesel	<b>Hp/Kw</b>	2 x 355.00 (hp), 260.93 (kw)
<b>Asking price</b>	€ 995.000 (VAT Paid)	<b>Lying</b>	at sales office

## CONTACT

<b>Sales office</b>	De Valk Loosdrecht B.V.	<b>Telephone</b>	+31 (0)35 582 90 30
<b>Address</b>	't Breukeleveense Meentje 6 1231LM Loosdrecht / Wijdmeren NL	<b>E-mail</b>	loosdrecht@devalk.nl

## DISCLAIMER

These particulars are given in good faith as supplied but cannot be guaranteed.



# SICHTERMAN 16.30 HT

## GENERAL

<b>Model</b>	SICHTERMAN 16.30 HT
<b>Type</b>	motor yacht
<b>LOA (m)</b>	16,30
<b>Beam (m)</b>	4,67
<b>Draft (m)</b>	0,90
<b>Air draft (m)</b>	3,70
<b>Air draft min (m)</b>	3,20
<b>Headroom (m)</b>	2,10
<b>Year built</b>	2019
<b>Launched</b>	2020
<b>Builder</b>	Workumer Jachtservice
<b>Country</b>	The Netherlands
<b>Designer</b>	Cor de Rover
<b>Displacement (t)</b>	24
<b>CE norm</b>	A
<b>Hull material</b>	aluminium
<b>Hull colour</b>	blue
<b>Hull shape</b>	yes
<b>Superstructure material</b>	aluminium
<b>Rubbing strake</b>	stainless steel
<b>Deck material</b>	aluminium
<b>Deck finish</b>	teak
<b>Window material</b>	double glazing
<b>Mast can be lowered</b>	electric
<b>Fuel tank (litre)</b>	1500
<b>Fuel tank 2 (litre)</b>	1500
<b>Level indicator (fuel tank)</b>	Control display
<b>Freshwater tank (litre)</b>	879
<b>Level indicator (freshwater)</b>	Control display
<b>Blackwater tank (litre)</b>	205



Level indicator (blackwater)	Control display
Wheel steering	hydraulic
Inside helm position	yes

## ACCOMMODATION

Cabins	2
Berths	6
Interior	teak White wash
Floor	yes
Saloon	yes
Headroom saloon (m)	2,10
Sliding roof	electric
Heating	floor heating Kabola
Air-conditioning	reverse cycle airco Webasto
Dinette	yes
Dinette to convert into berth	yes
Opening door to cockpit	yes
Countertop	corian
Sink	stainless steel
Cooker	induction 2 pits - Pelgrim
Microwave/oven combi	Siemens
Fridge	2x
Hot water system	on central heating
Water pressure system	electrical
Dishwasher	Siemens
Coffee maker	Nespresso
Owners cabin	double bed
Bed length (m)	2
Wardrobe	hanging/drawers/shelves
Bathroom	shared
Toilet	separate 2x



<b>Toilet system</b>	electric
<b>Shower</b>	shared
<b>Guest cabin 1</b>	double bed
<b>Bed length (m)</b>	2
<b>Wardrobe</b>	hanging and shelves
<b>Washing machine/dryer combi</b>	Candy 8 kg

## MACHINERY

<b>No of engines</b>	2
<b>Make</b>	Cummins
<b>Type</b>	QSB6.7355HOI
<b>HP</b>	355
<b>kW</b>	260.93
<b>Fuel</b>	diesel
<b>Year installed</b>	2019
<b>Engine cooling system</b>	seawater
<b>Drive</b>	shaft
<b>Engine controls</b>	electrical
<b>Gearbox</b>	hydraulic ZF
<b>Bowthruster</b>	electric Sidepower
<b>Sternthruster</b>	electric Sidepower
<b>Propeller type</b>	fixed
<b>Propeller shaft material</b>	stainless steel
<b>Shaft lubrication</b>	water
<b>Manual bilge pump</b>	yes
<b>Electric bilge pump</b>	yes
<b>Electrical installation</b>	12V / 24V / 230V + Empirbus system
<b>Start battery</b>	2 x 2 12V/165 Ah Victron Energy
<b>Service battery</b>	10x 12V/220Ah Victron Energy
<b>Bowthruster battery</b>	2x 2 12V/130Ah Victron Energy
<b>Sternthruster battery</b>	2x 2 12V/130Ah Victron Energy



Battery monitor	Victron Energy
Battery charger/inverter	2x Victron Energy MultiPlus
Shorepower	with cable
Insulation transformer	Victron Energy

## NAVIGATION

Multi control display	Raymarine Axiom
Depth sounder/log	I70s
VHF	Raymarine Ray90
Autopilot	P70s
Rudder angle indicator	Raymarine Axiom
Plotter/GPS	Raymarine Axiom
Wifi antenna	yes
Camera	Raymarine
Navigation lights	yes

## EQUIPMENT

Cockpit cushions	yes
Cockpit table	yes
Bathing platform	Teak finish
Transom door	Hydraulic
Deck shower	yes
Sea railing	yes
Grab rail (superstructure)	stainless steel
Railing side opening gates	2x (PS & SB)
Wiper	3x 2 arms
Horn	electric
Fenders	yes
Mooring lines	yes
TV	Samsung



# SICHTERMAN 16.30 HT



# SICHTERMAN 16.30 HT



# SICHTERMAN 16.30 HT



# SICHTERMAN 16.30 HT



# SICHTERMAN 16.30 HT



# SICHTERMAN 16.30 HT



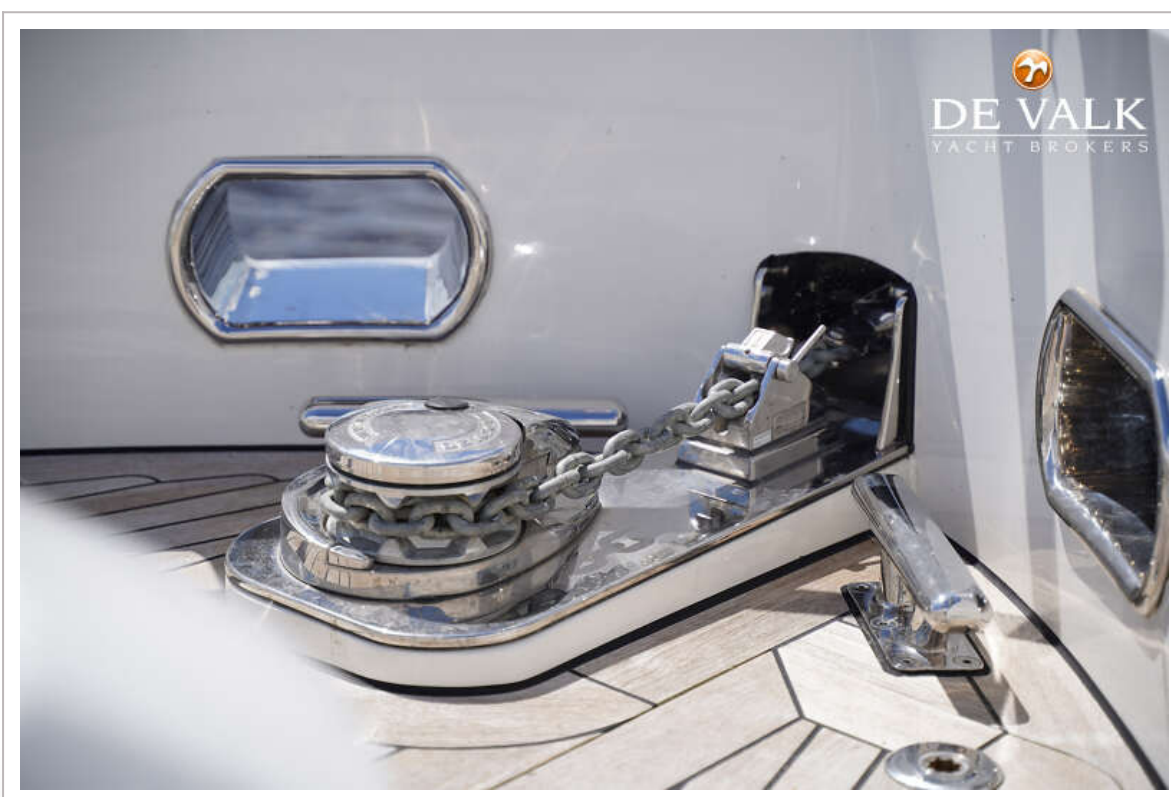
# SICHTERMAN 16.30 HT



# SICHTERMAN 16.30 HT



# SICHTERMAN 16.30 HT





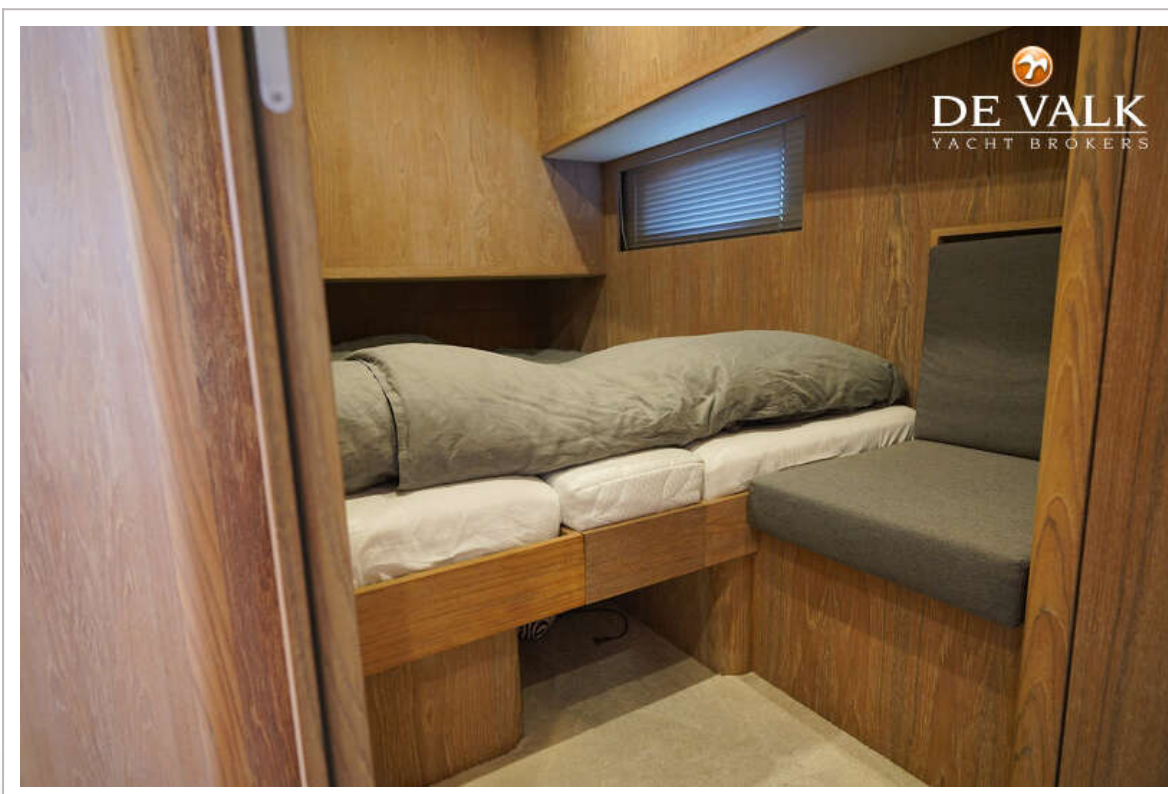
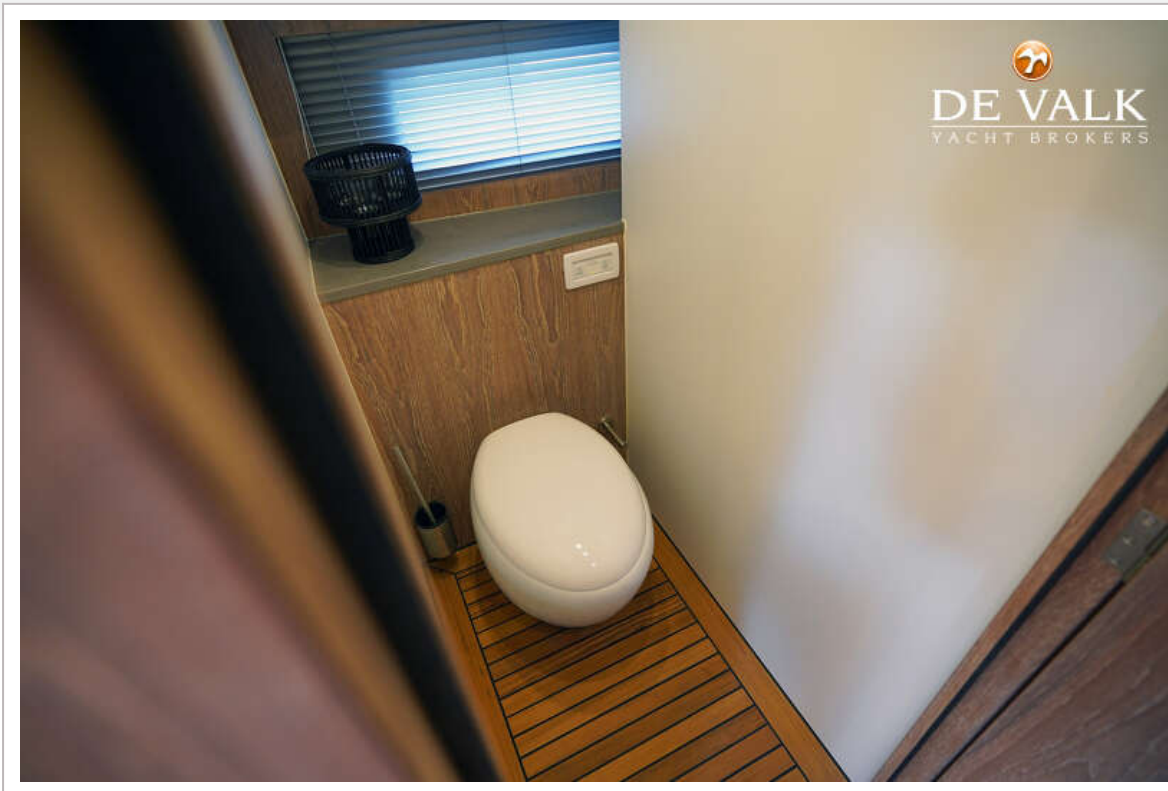
# SICHTERMAN 16.30 HT



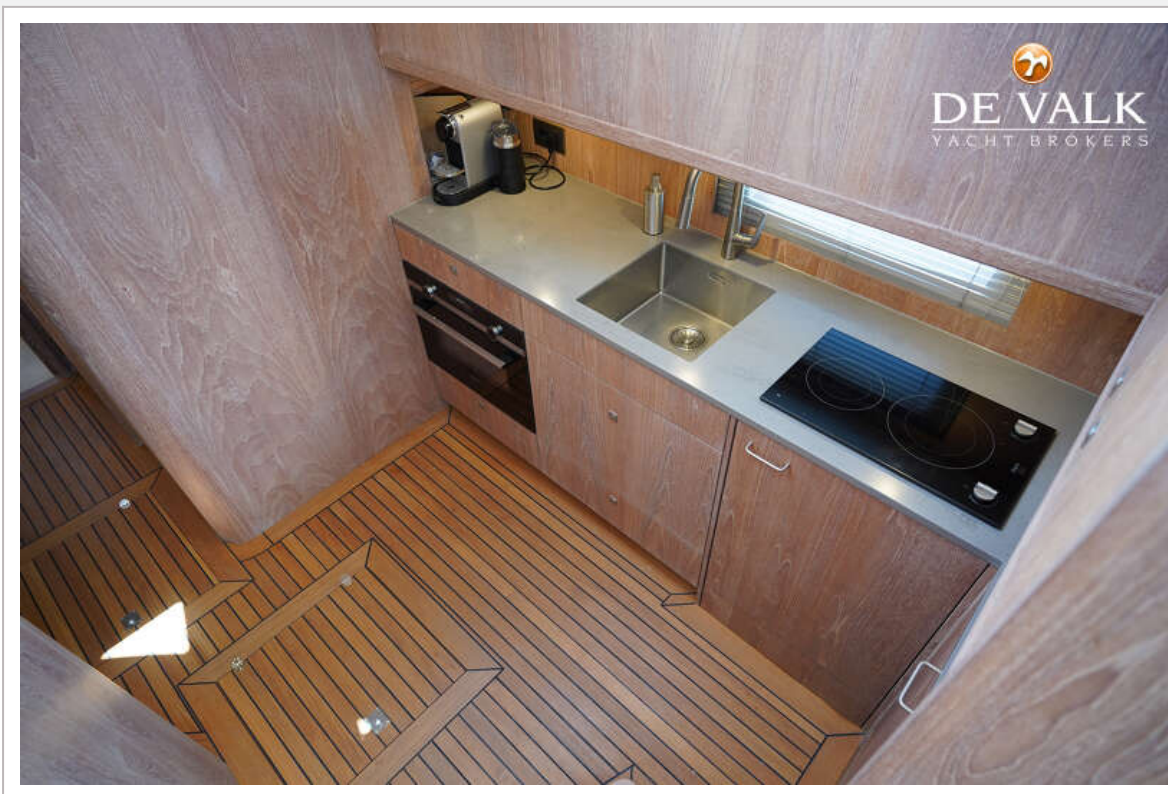
# SICHTERMAN 16.30 HT

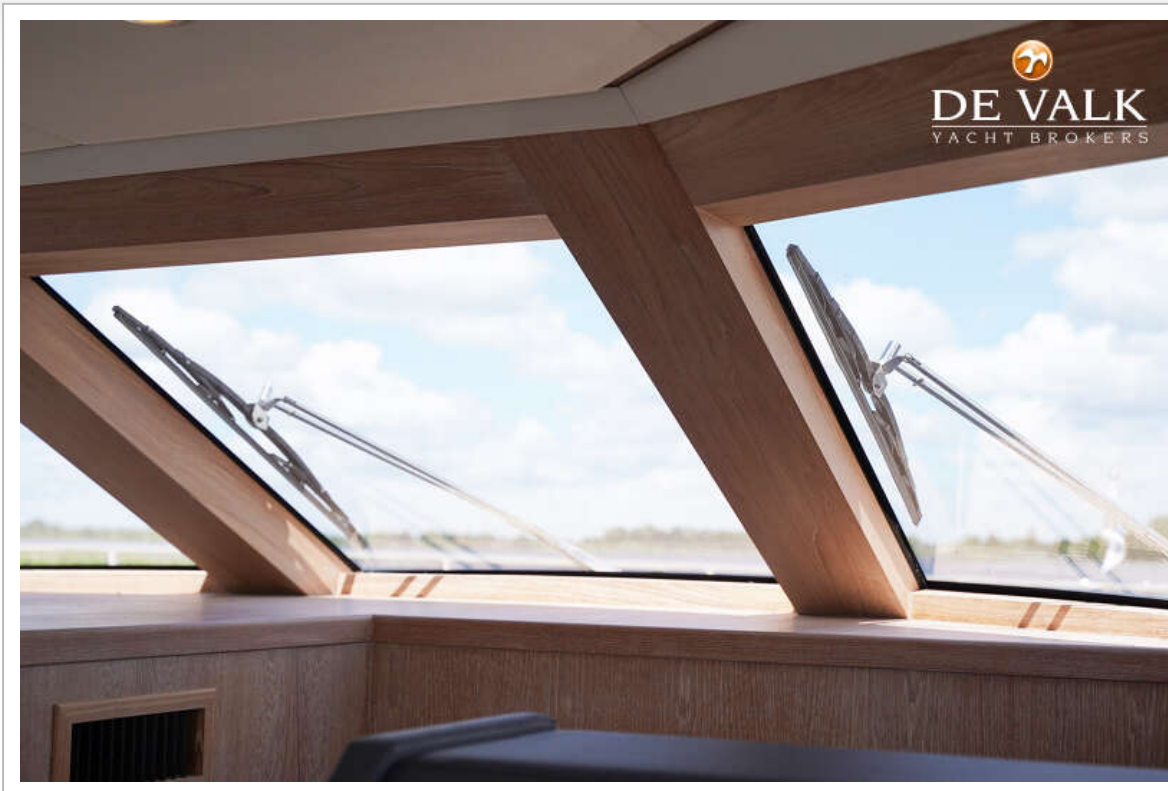




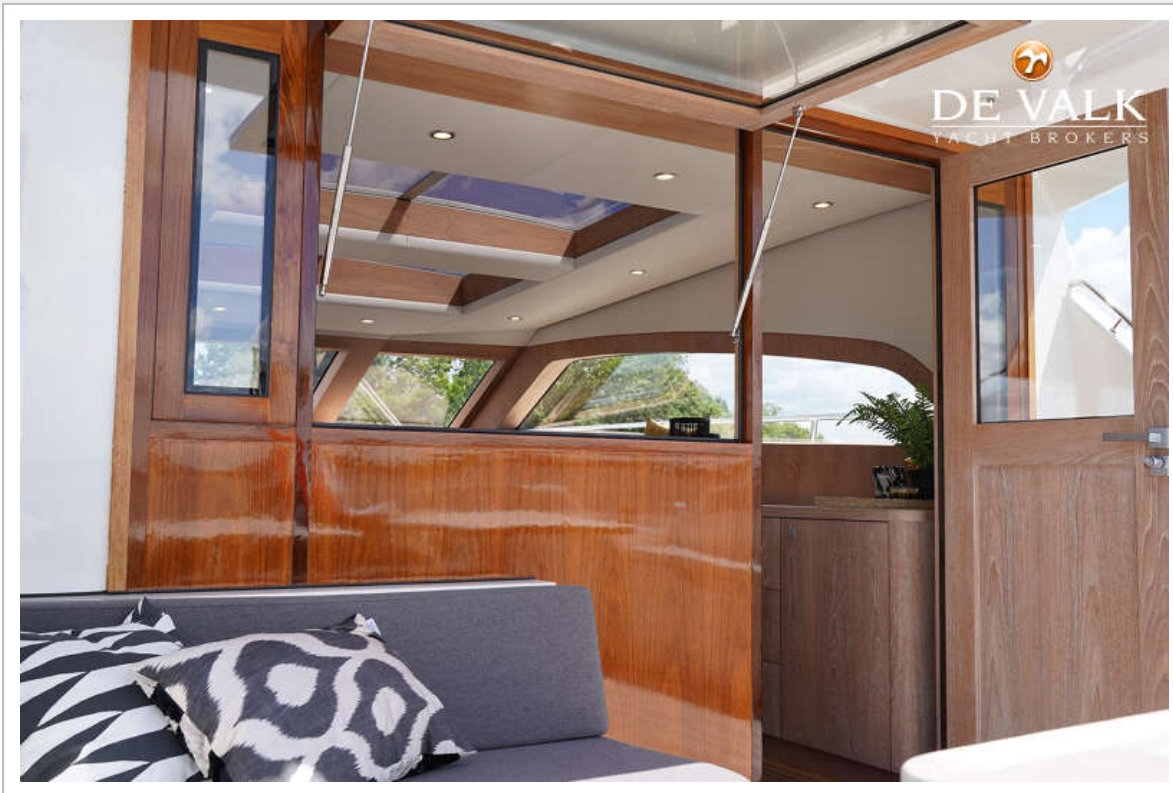


# SICHTERMAN 16.30 HT

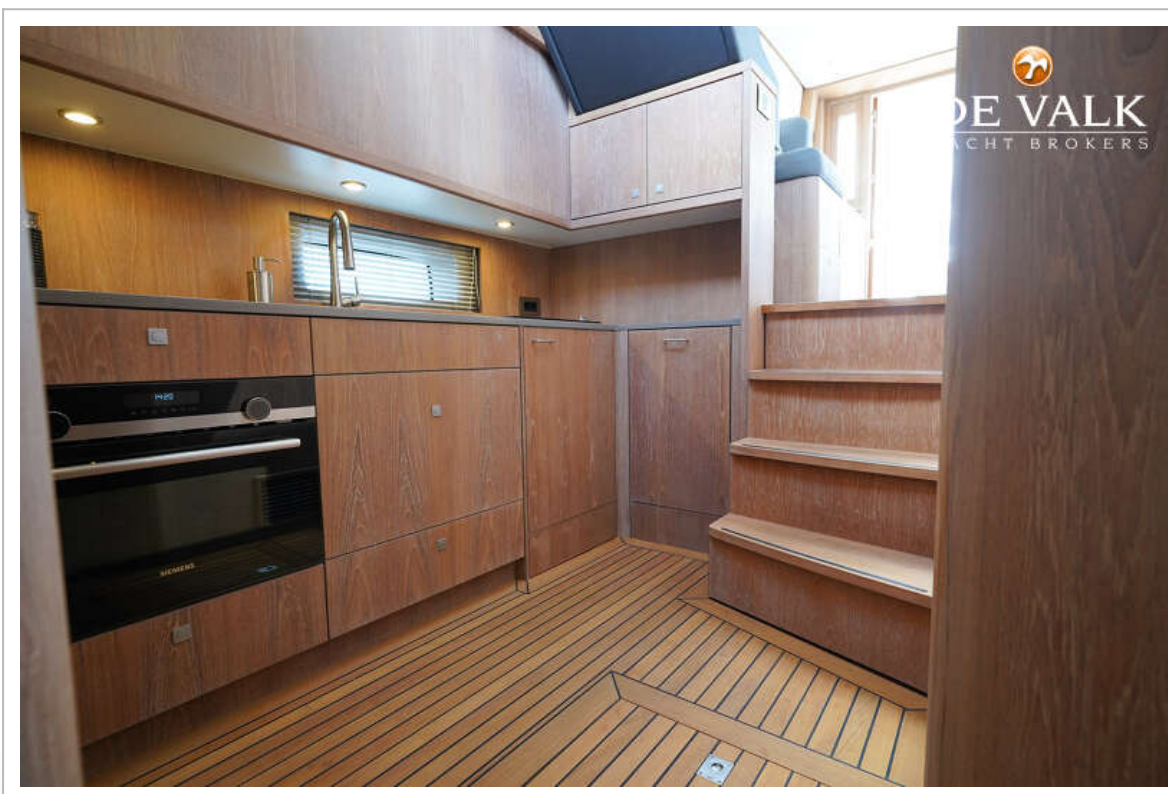
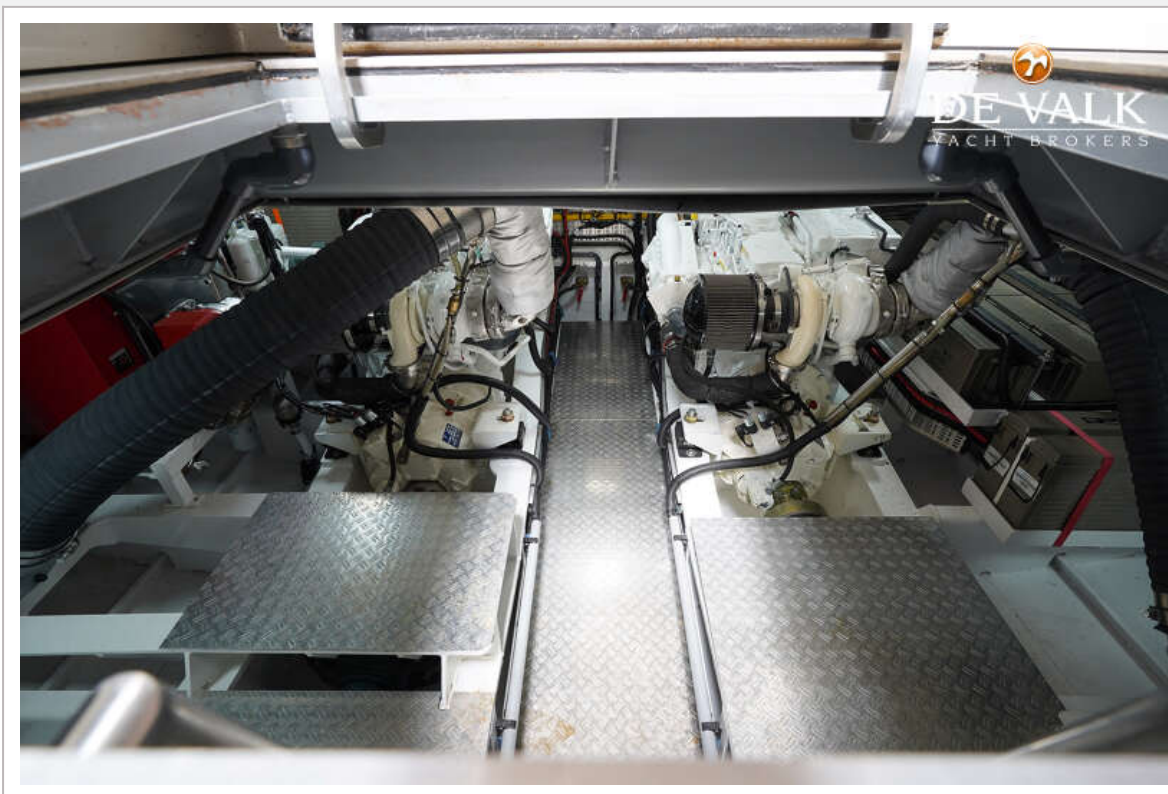




# SICHTERMAN 16.30 HT



# SICHTERMAN 16.30 HT



# SICHTERMAN 16.30 HT

