



BALI 5.4



BROKER'S COMMENTS

Unique opportunity! Why wait 2 years if you wish direct sailing in an almost brand new Bali 5.4 owners version? Equipped with many extras and upgraded to a very high standard. Did you see the amazing opening door to the aft cockpit, creating a massive open living and relaxing area? Almost unused, since new maintained by a passionate skipper. Up to 8 guests + 1 crew in superb comfort, owners cabin is like a 5 star hotel suite with absolute privacy. No need to say she is ready to go and she can leave in "one hour" to the Caribbean or another location of your dreams.

Willem Koopmans

SPECIFICATIONS

Dimensions	16.80 x 8.74 x 1.48 (m)	Builder	Chantier Catana S.A.S.
Built	2021	Cabins	5
Material	GRP	Berths	10
Engine(s)	2 x Yanmar 4JH-80-C diesel	Hp/Kw	2 x 80.00 (hp), 58.80 (kw)
Asking price	sold (VAT)	Lying	contact sales office

CONTACT

Sales office	De Valk Costa Blanca	Telephone	+34 96 50 21 569
Address	Costa Blanca Region 03730 Javea Alicante ES	E-mail	costablanca@devalk.nl

DISCLAIMER

These particulars are given in good faith as supplied but cannot be guaranteed.



GENERAL

Model	BALI 5.4
Type	catamaran sailing yacht
LOA (m)	16,80
LWL (m)	16,22
Beam (m)	8,74
Draft (m)	1,48
Air draft (m)	24,97
Headroom (m)	2,00
Year built	2021
Builder	Chantier Catana S.A.S.
Country	France
Designer	Olivier Poncin / Xavier Fey
Displacement (t)	22,5
CE norm	B
Hull material	GRP
Hull colour	off-white
Superstructure material	GRP
Deck material	epoxy and foam core
Deck finish	TBS non-skid profile mats
Superstructure deck finish	teak
Cockpit deck finish	teak
Antifouling (year)	2021, 2 layers with epoxy base coat
Window material	tempered glass
Deckhatch	yes
Flybridge	yes
Flybridge suncover	yes
Fuel tank (litre)	600
Fuel tank 2 (litre)	600
Level indicator (fuel tank)	yes
Freshwater tank (litre)	2 x 600



Level indicator (freshwater)	yes
Greywater tank (litre)	2 x 150
Wheel steering	Composite 900 mm wheel
Flybridge helm position	yes
Emergency tiller	yes
Extra info	Bali benefits of a fixed frontdeck with superb sunbeds, no nets!
Extra info	LED lightning

ACCOMMODATION

Cabins	5
Berths	10
Crew cabin	Star board front, own entrance
Crew berths	yes
Layout	Owners version
Deck saloon	Amazing aft opening section,complete outdoor experience lliving
Headroom saloon (m)	2,2
Air-conditioning	reverse cycle airco All cabins
Navigation center	yes
Chart table	yes
Aft Cabin	Private acces outside
Dinette	yes
Sliding door to cockpit	Have a look at the pictures, amazing system!
Galley	yes
Countertop	Duropol White
Sink	stainless steel Double
Cooker	calor gas Electrolux
Oven	Gas
Gas alarm	yes
Microwave/oven combi	Samsung, 220V
Fridge	Combined fridge/freezer (tot. 615 L) plus Dometic on fly
Freezer	230 ltr



Wine cooler	Vitrifigro, 12 bottles
Hot water system	2x 60 ltr boilers
Water pressure system	yes
Dishwasher	Electrolux, 220V
Ice maker	yes
Coffee maker	yes
Owners cabin	On port hull side, acces inside and private outside also
Bed length (m)	2,1
Wardrobe	hanging and shelves
Bathroom	en suite
Toilet	en suite
Toilet system	electric
Wash basin	in the bathroom
Shower	en suite
Guest cabin 1	double bed Amazing view
Bed length (m)	2
Wardrobe	hanging and shelves
Bathroom	en suite
Toilet	en suite
Toilet system	electric
Wash basin	in the bathroom
Shower	en suite
Guest cabin 2	twin single
Bed length (m)	2
Wardrobe	hanging and shelves
Bathroom	en suite
Toilet	en suite
Toilet system	electric
Wash basin	in the bathroom
Shower	en suite
Guest cabin 3	double bed Separate entrance on aft deck
Bed length (m)	2



Wardrobe	yes
Bathroom	yes
Toilet	en suite
Toilet system	electric
Wash basin	in the bathroom
Shower	en suite
Crew cabin(s)	1 bed for skipper
Toilet (crew)	yes
Wash basin	yes
Shower (crew)	Hand shower
Washing machine	Candy Smart, combi, 220V
Extra info	Grill/barbecue on aft deck
Extra info	All beds: highly resilient foam mattresses

MACHINERY

No of engines	2
Make	Yanmar
Type	4JH-80-C
HP	80
kW	58,80
Fuel	diesel
Year installed	2021
Maximum speed (kn)	12
Cruising speed (kn)	8
Engine hours	625
Engine cooling system	freshwater heat exchanger
Drive	sail-drive
Saildrive seal	yes
Engine controls	yes
Electric engine	2 extra alternators 125 Ah
Propeller type	folding



Propeller blades	3
Manual bilge pump	2x
Electric bilge pump	4x
Bilge alarm	yes
Electrical installation	12/228
Generator	Cummins Onan 11 kW 1500 rpm
Start battery	Victron 2 x 130 Ah gel
Service battery	Victron 6 x 130 Ah gel
Generator battery	Gel
Battery monitor	yes
Battery charger/inverter	Victron 120/3000
Solar panel	8 x 100 Watt
Shorepower	yes
Watermaker	105l/h
Extra info	Engines 80 hp instead of standard 50 hp
Extra info	2 x double fuel filters

NAVIGATION

Compass	yes
Compass on flybridge	yes
Electric compass	On pilot
Multi control display	Raymarine I70
Depth sounder	yes
Log	yes
Windset	yes
VHF	Raymarine + DSC
Autopilot	Raymarine P70, with remote
Radar/GPS/plotter	Axiom 7 & 12 inch
Wifi antenna	yes
AIS transceiver	Raymarine
EPIRB	yes



Navigation lights

LED

Extra info

LED submarine lightning 21W (4 spots)

EQUIPMENT

Fixed hardtop

yes

Sun awning

yes

Cockpit cushions

yes

Cockpit table

yes

Bathing platform

yes

Boarding ladder

stainless steel

Gangway

yes

Deck shower

Hot/cold fresh water

Anchor

yes

Anchor chain

yes

Windlass

electrical 1700 Watt with remote

Dinghy

Alu RIB 3D with protection for tubes

Outboard

Suzuki 20 hp

Davits

yes

Davits controls

electrical

Sea railing

yes

Life raft

container Ocean standard

Life raft (pers)

container 10

Lifejackets

yes

Lifebuoy

yes

Horn

yes

Radar reflector

yes

Fenders

yes

Mooring lines

yes

TV

On lift

iPod connection

yes

Cockpit speakers

Fusion Bluetooth HiFi, saloon, in fly as well



Speakers in salon	yes
Fire extinguisher	yes
Auto extinguisher system	yes
Extra info	Sun bed cushions Marlin Parchment

RIGGING

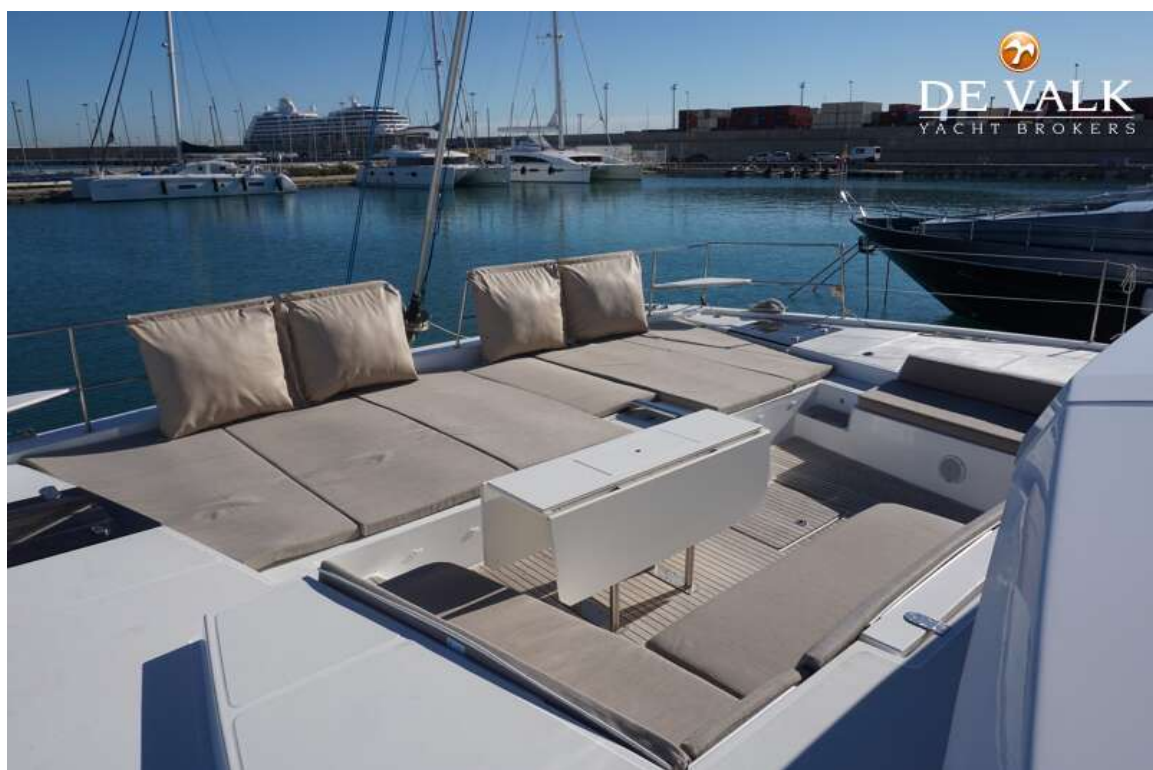
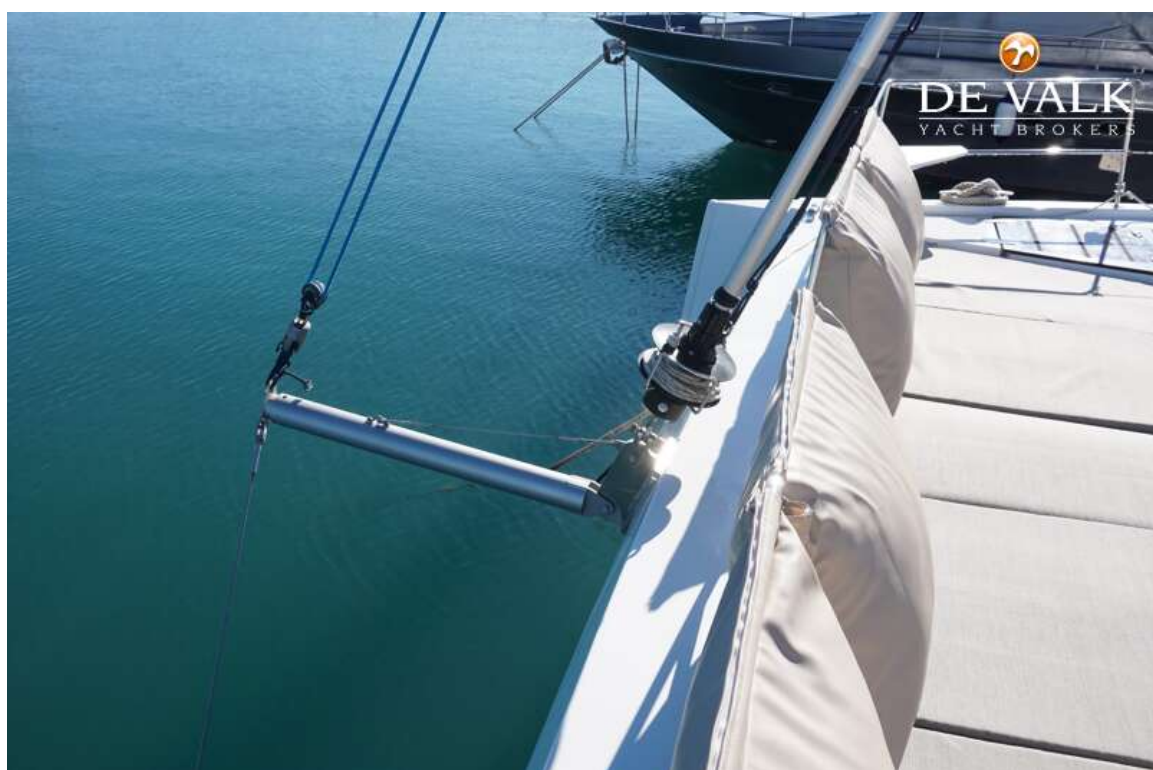
Rigging	sloop
Standing rigging	wire
Material mast	Anodized aluminium
Spreaders	yes
Mainsail	yes
Mainsail cover	Optional V boom with lazy back
Fully battened mainsail	Elvstrom, Dacron 3 reefs 100 m2, with UV protection
Jib	Elvstrom, Dacron, self tacking 60 m2, with UV protection
Code Zero	Elvstrom Triradial 104 m2
Boomvang	yes

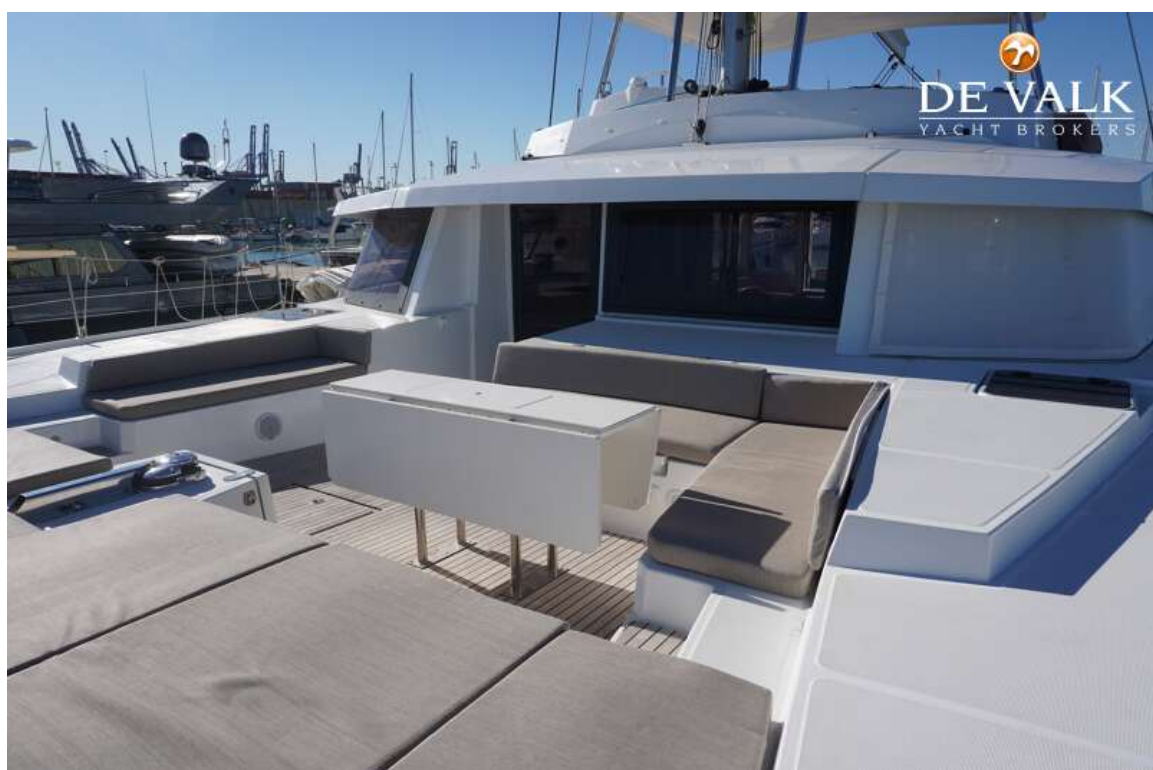


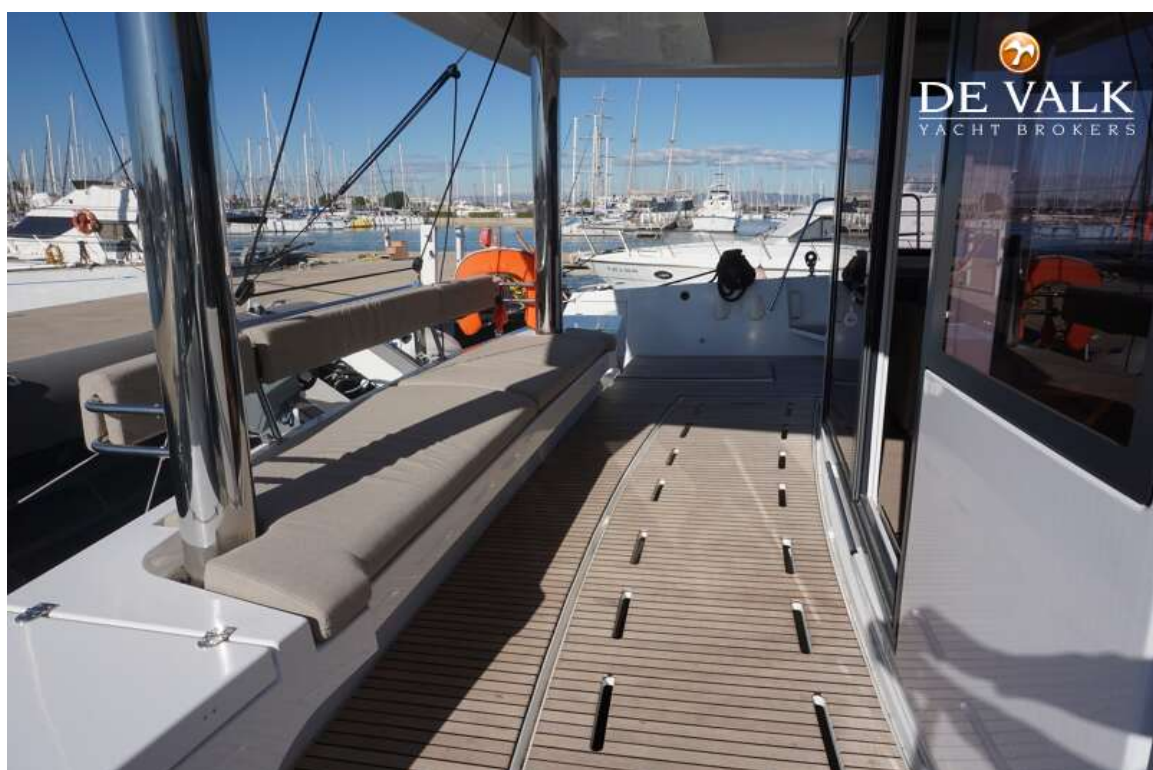
BALI 5.4

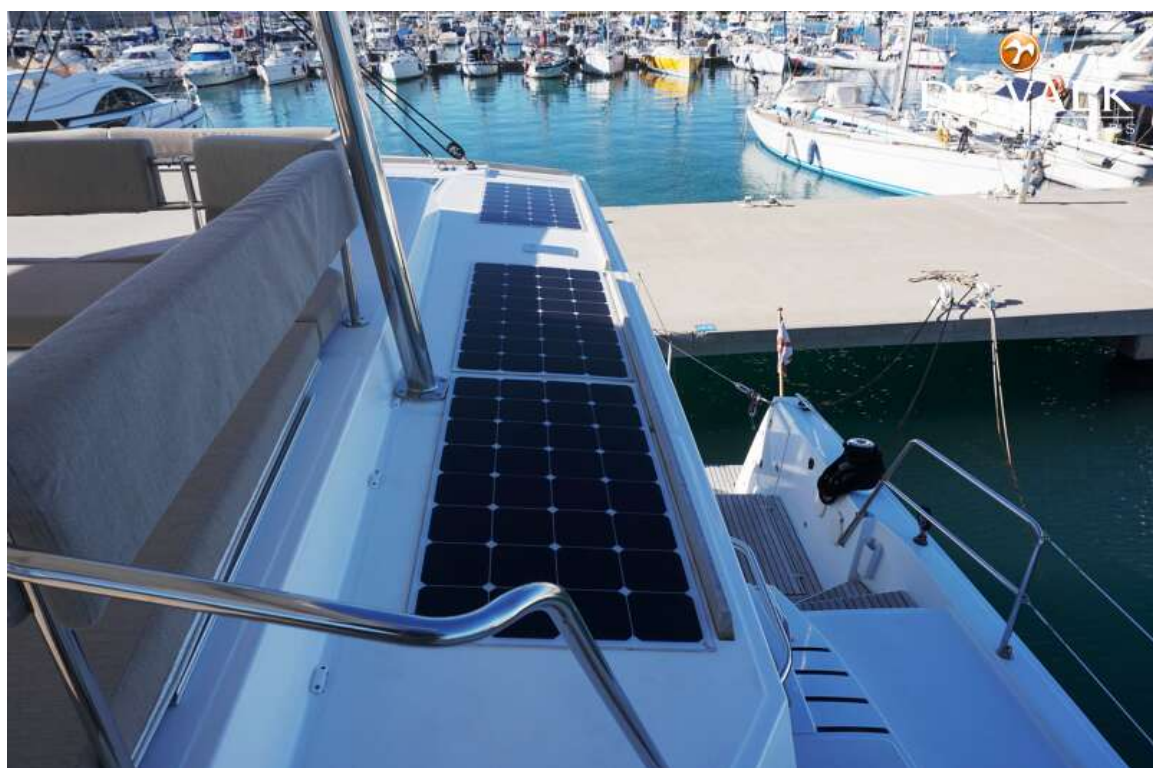
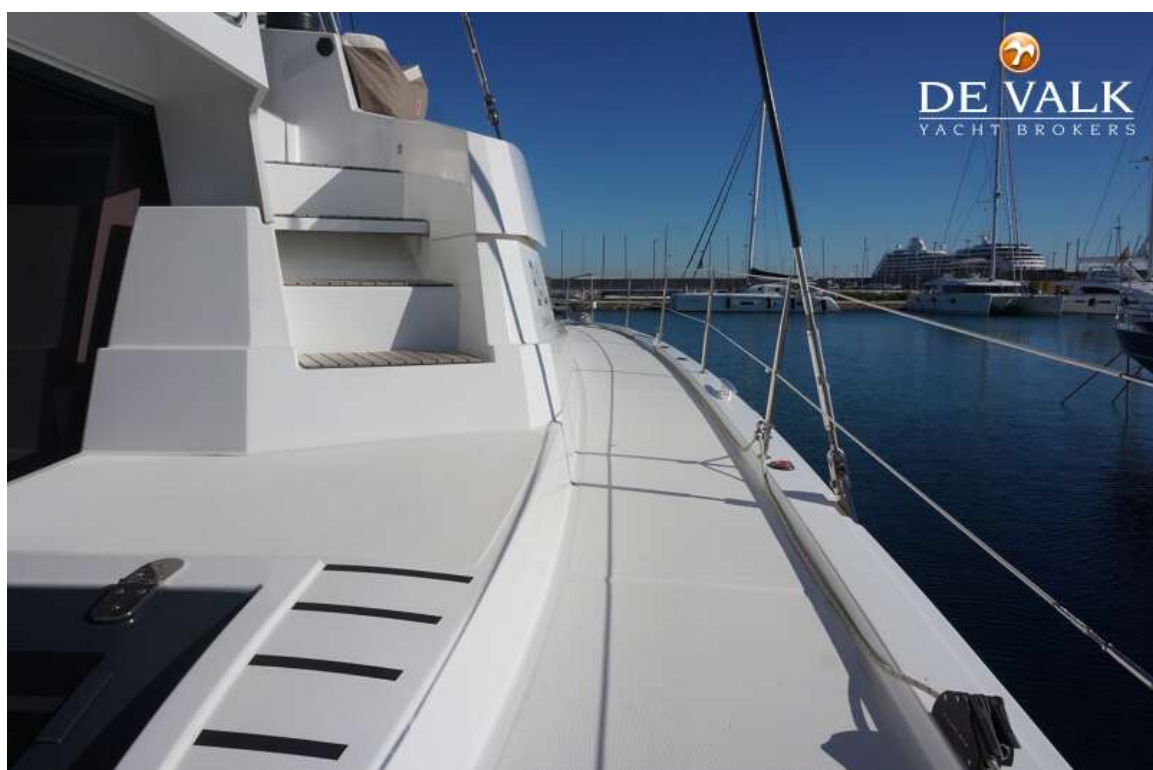










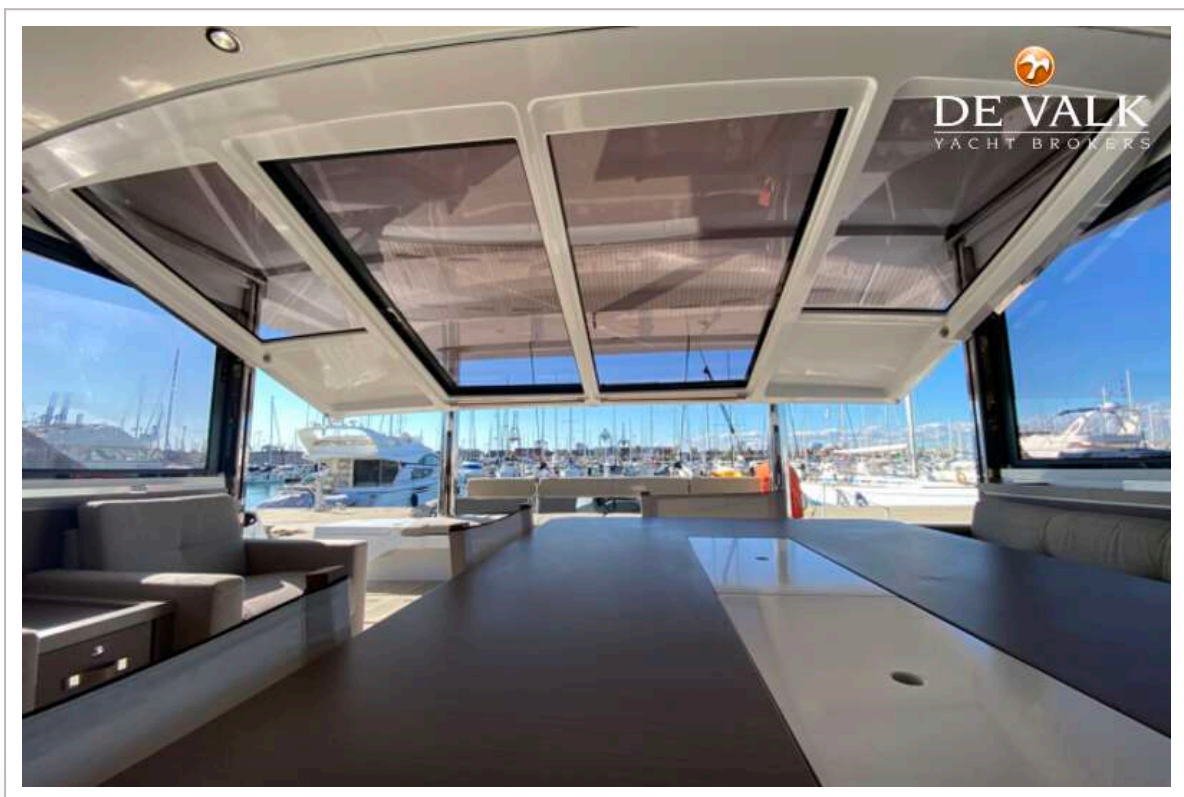
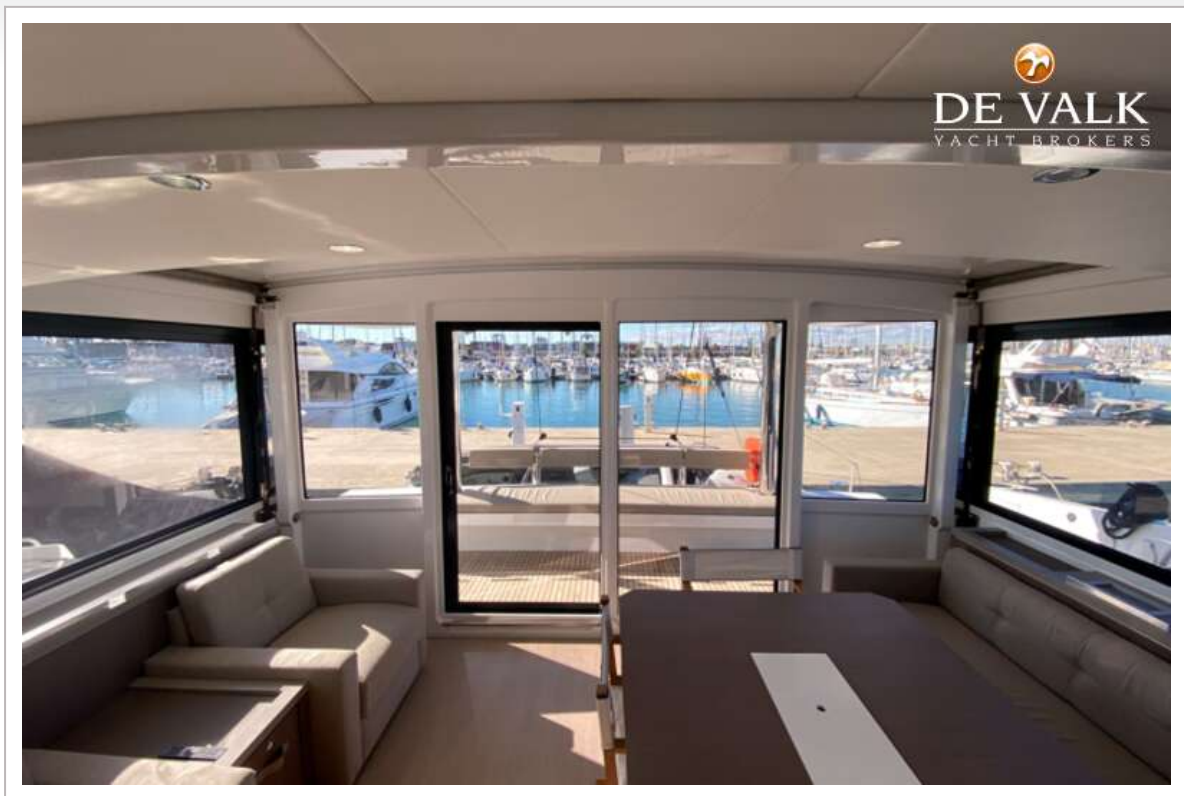


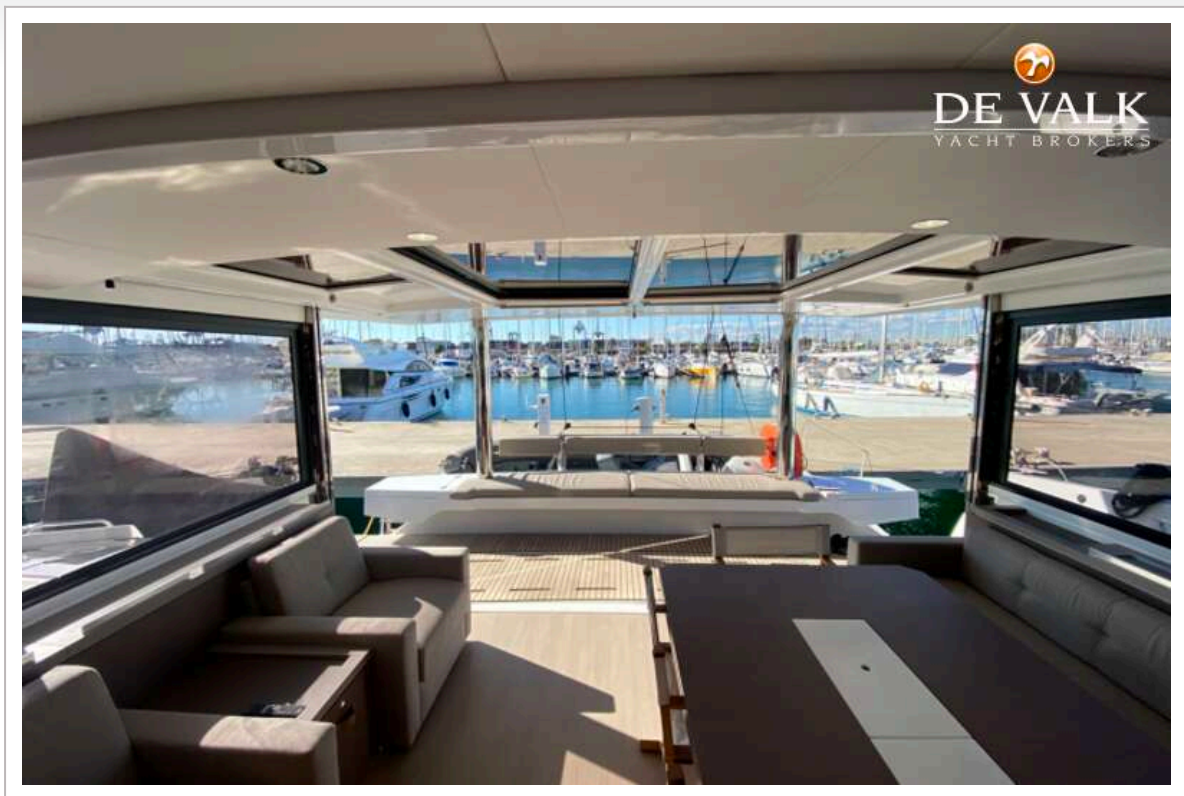


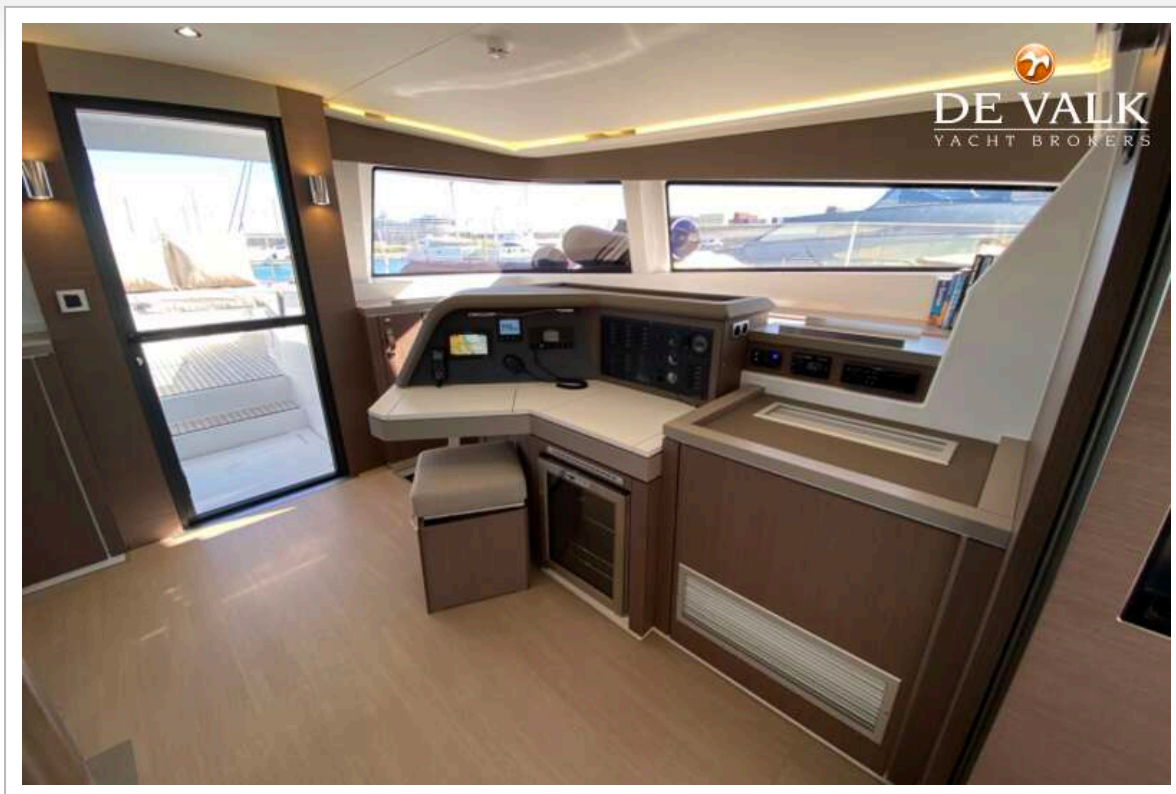


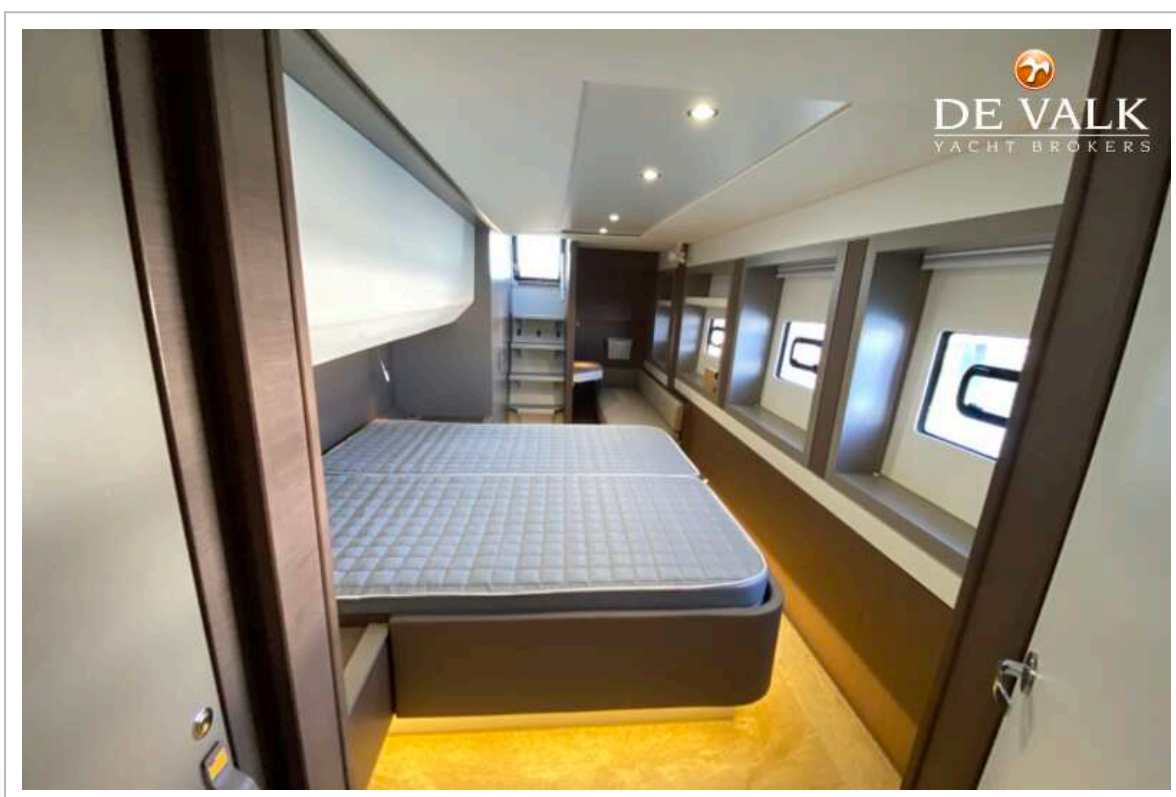
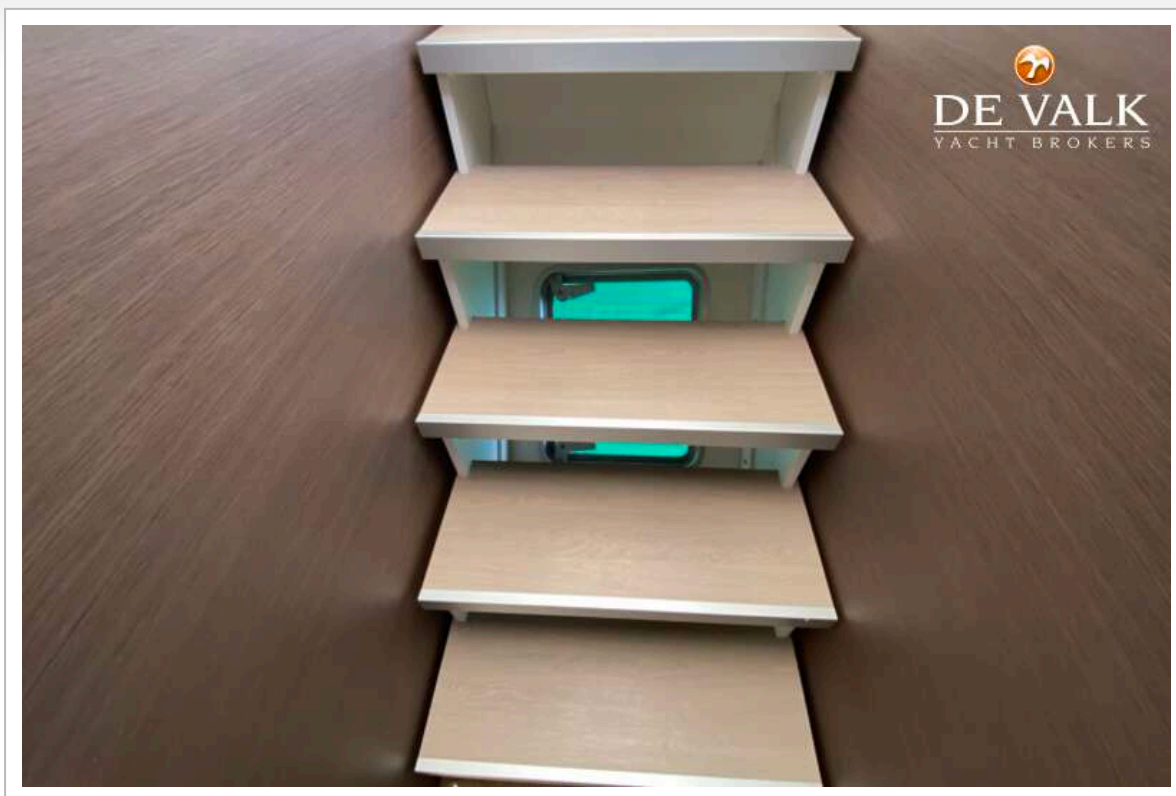


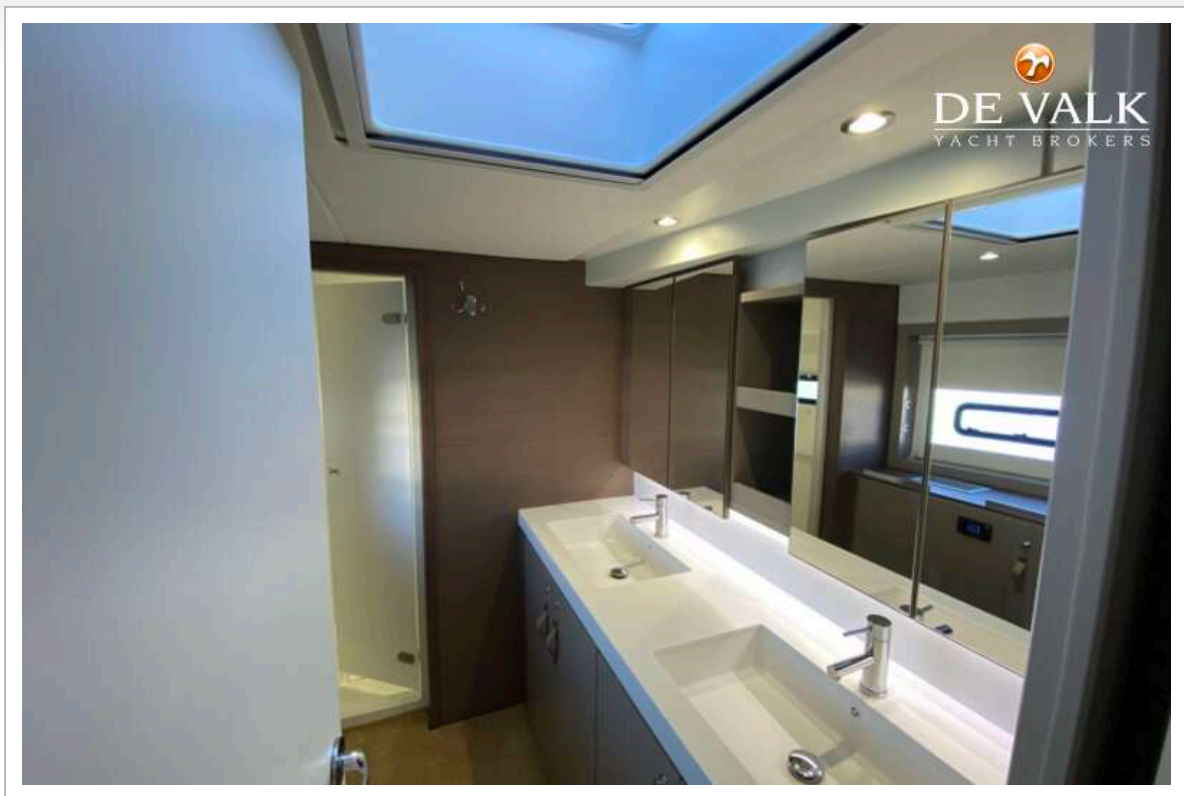


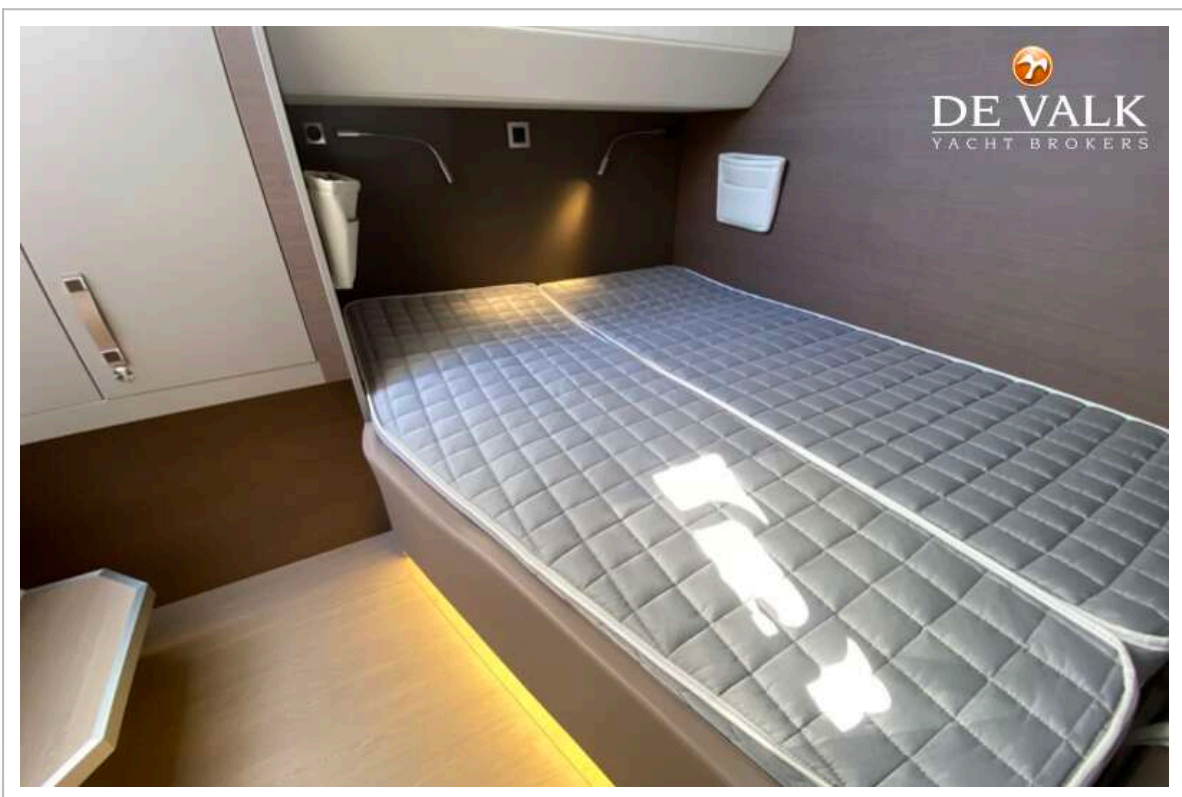


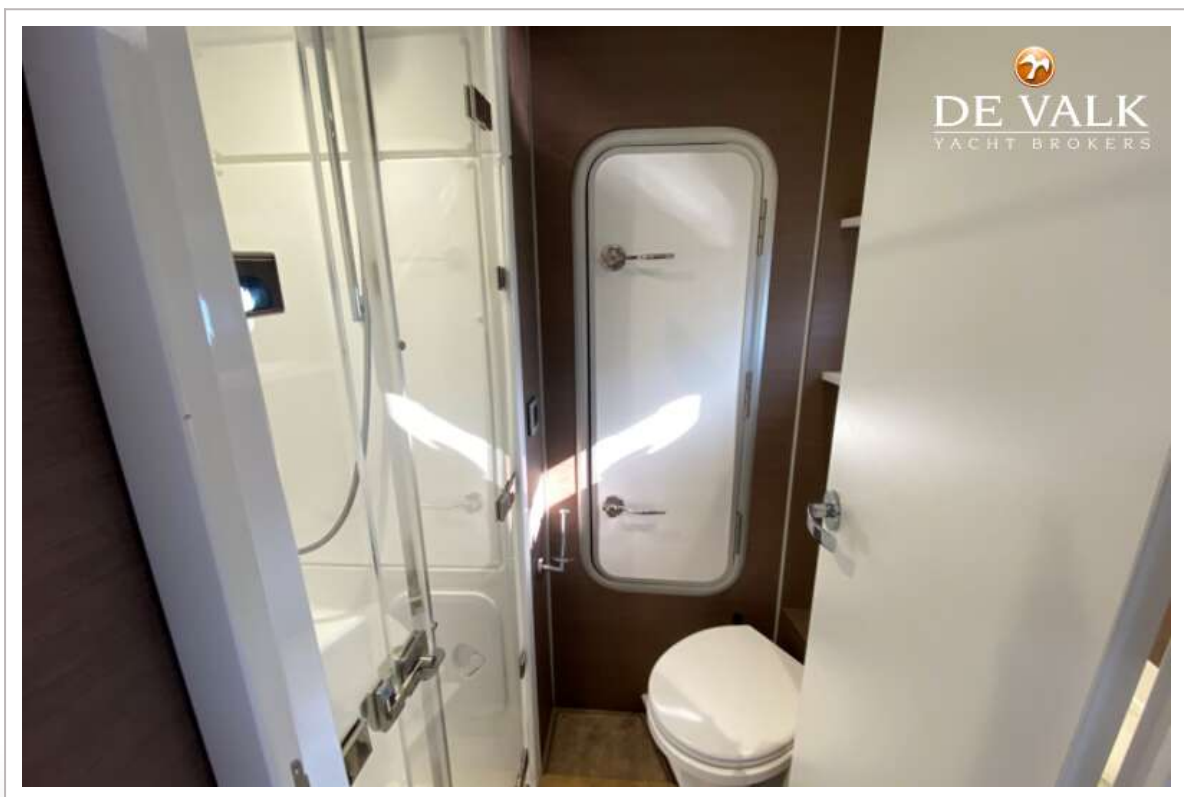
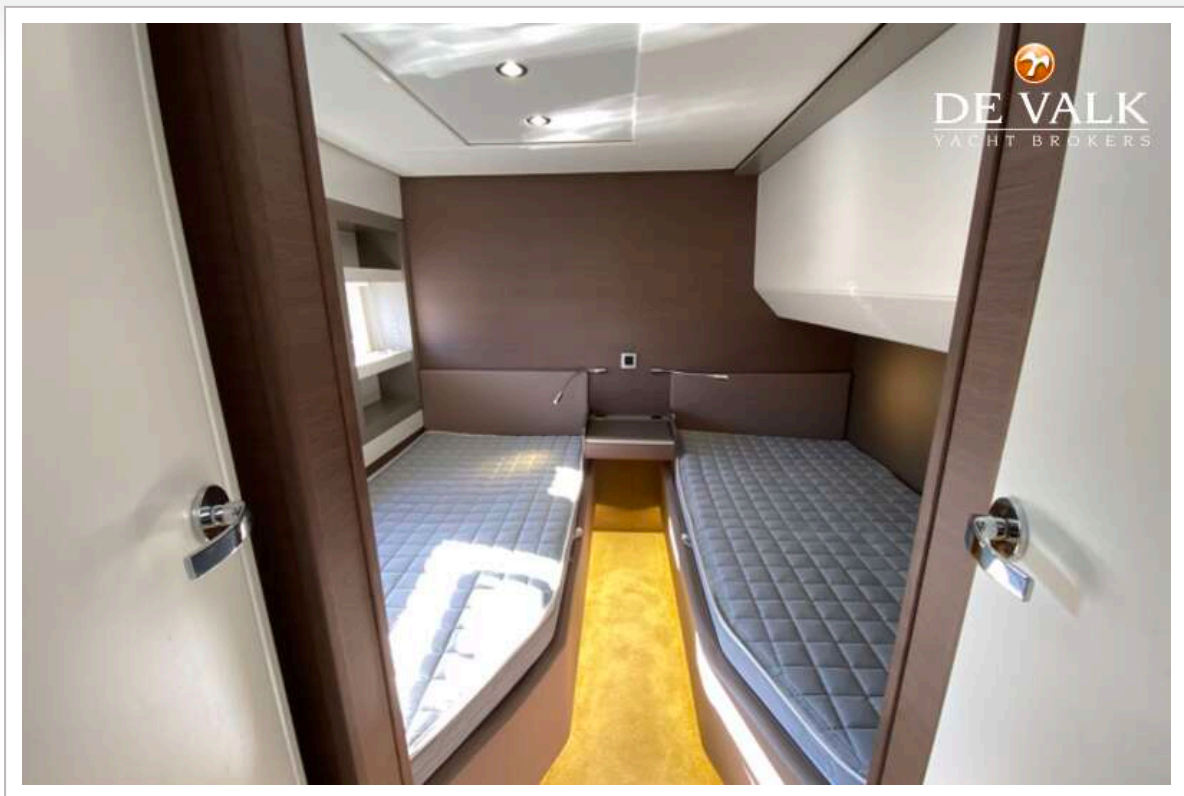




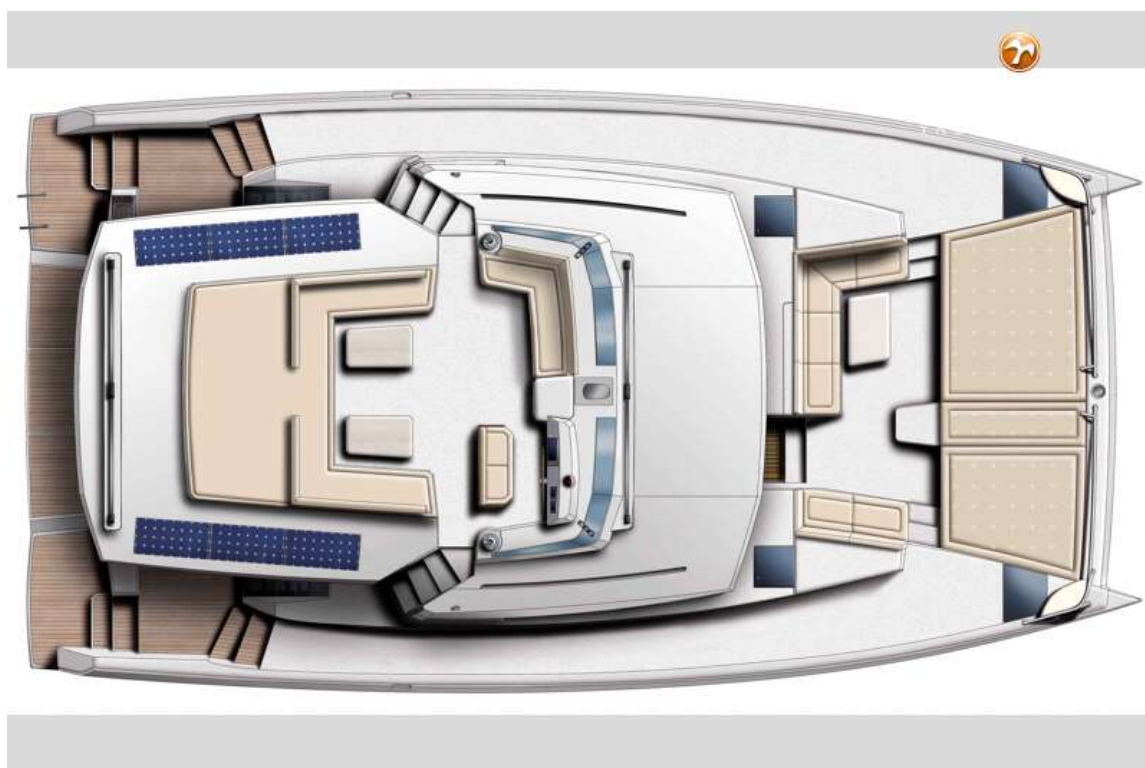














BALI 5.4

