



## ALMTRAWLER 1320 AD

# ALMTRAWLER 1320 AD

## BROKER'S COMMENTS

The Almtrawler 1320 is a comfortable ship that is equipped with all conveniences. The ship is equipped for long trips, but is also excellent for weekends on board. The hull was repainted in 2022 and has had further full maintenance. An ideal boat for young and old! Schedule a viewing now for this fully equipped yacht.

*Sjoerd Paddenburg*

## SPECIFICATIONS

<b>Dimensions</b>	14.03 x 4.50 x 1.30 (m)	<b>Builder</b>	Jachtbouw De Alm
<b>Built</b>	2003	<b>Cabins</b>	3
<b>Material</b>	Steel	<b>Berths</b>	6
<b>Engine(s)</b>	2 x Perkins diesel	<b>Hp/Kw</b>	2 x 136.00 (hp), 100.10 (kw)
<b>Asking price</b>	sold (VAT )	<b>Lying</b>	elsewhere / Not at sales office

## CONTACT

<b>Sales office</b>	De Valk Loosdrecht B.V.	<b>Telephone</b>	+31 (0)35 582 90 30
<b>Address</b>	't Breukeleveense Meentje 6 1231LM Loosdrecht / Wijdmeren NL	<b>E-mail</b>	loosdrecht@devalk.nl

## DISCLAIMER

These particulars are given in good faith as supplied but cannot be guaranteed.



## GENERAL

Model	ALMTRAWLER 1320 AD
Type	motor yacht
LOA (m)	14,03
Beam (m)	4,50
Draft (m)	1,30
Year built	2003
Builder	Jachtbouw De Alm
Country	The Netherlands
Displacement (t)	22
CE norm	B
Hull material	steel
Hull colour	blue
Hull shape	hard chine
Superstructure material	steel
Rubbing strake	rubber
Deck material	steel
Deck finish	non-skid paint
Antifouling (year)	Winter 2021/2022
Window frame	aluminium
Window material	double glazing Partly
Deckhatch	yes
Flybridge	Windows are in storage
Mast can be lowered	manual
Fuel tank (litre)	1175
Fuel tank 2 (litre)	1175
Level indicator (fuel tank)	yes
Freshwater tank (litre)	1000
Level indicator (freshwater)	yes
Blackwater tank (litre)	400
Level indicator (blackwater)	yes



Blackwater tank extraction	deck extraction + pump
Wheel steering	hydraulic
Inside helm position	yes
Flybridge helm position	Basic system is in storage

## ACCOMMODATION

Cabins	3
Berths	6
Interior	cherry
Floor	teak
Saloon	yes
Headroom saloon (m)	2,10
Heating	central heating Kabola B12-Tap (2002)
Dining room	yes
Opening door to cockpit	yes
Opening door to aft deck	yes
Galley	New 2015
Countertop	corian
Sink	stainless steel New 2015
Cooker	calor gas Zanussi - 4 pits
Microwave/oven combi	AEG (2015)
Fridge	2015
Freezer	2015
Hot water system	on central heating
Water pressure system	electrical
Dishwasher	Siemens SR65M036EU (2018)
Owners cabin	double bed
Bed length (m)	2
Toilet	shared
Toilet system	electric
Shower	shared



Guest cabin 1	twin single
Bed length (m)	2
Guest cabin 2	twin single
Bed length (m)	2

## MACHINERY

No of engines	2
Make	Perkins
HP	136
kW	100,10
Fuel	diesel
Year installed	2003
Engine hours	Approx. 1500
Engine cooling system	freshwater heat exchanger
Drive	shaft
Engine controls	bowden cable
Bowthruster	electric Vetus 9524 with remote
Sternthruster	electric Sidepower SE80 / 24V outside fixed remote control
Exhaust	watercooled
Propeller type	fixed
Propeller shaft material	stainless steel
Shaft lubrication	water
Manual bilge pump	yes
Electric bilge pump	yes
Electrical installation	24V
Generator	wet exhaust Fisher Panda
Running hours generator	100
Batteries	yes
Start battery	2x 200Ah   Optima Red Top
Service battery	4x 200Ah   Optima Red Top
Generator battery	1x 80 Ah   Optima Red Top



Bowthruster battery	Optima Red Top
Sternthruster battery	Optima Red Top
Battery monitor	yes
Battery charger	Mastervolt Automatic Battery Charger
Inverter	Mastervolt Sine Wave Inverter
Shorepower	with cable

## NAVIGATION

Electric compass	Raymarine ST60
Depth sounder	Raymarine ST60
Depth sounder/log	Raymarine (log defect)
VHF	Simrad RD65
Autopilot	Raymarine ST6001
Rudder angle indicator	Raymarine ST60
Radar/GPS/plotter	Raymarine eSerie
AIS transceiver	yes
Navigation lights	yes

## EQUIPMENT

Bathing platform	yes
Anchor	
Anchor chain	yes
Windlass	electrical Vetus Maxwell (2019)
Deck crane	
Sea railing	stainless steel
Grab rail (superstructure)	stainless steel
Life raft	valise (or bag)
Wiper	yes
Horn	electric
Fenders	yes
Mooring lines	yes



# ALMTRAWLER 1320 AD

TV	Samsung
Radio-cd player	Philips
Speakers in salon	Philips
Clock - barometer	yes
Fire extinguisher	yes



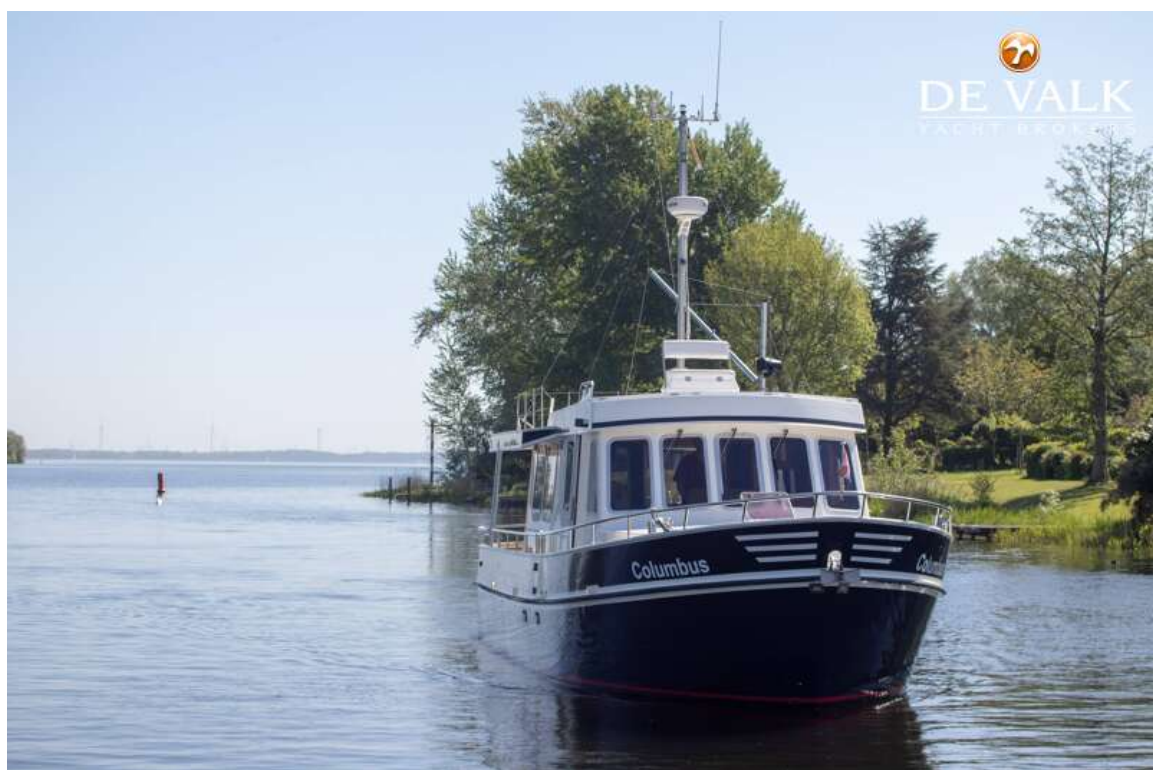
# ALMTRAWLER 1320 AD



# ALMTRAWLER 1320 AD



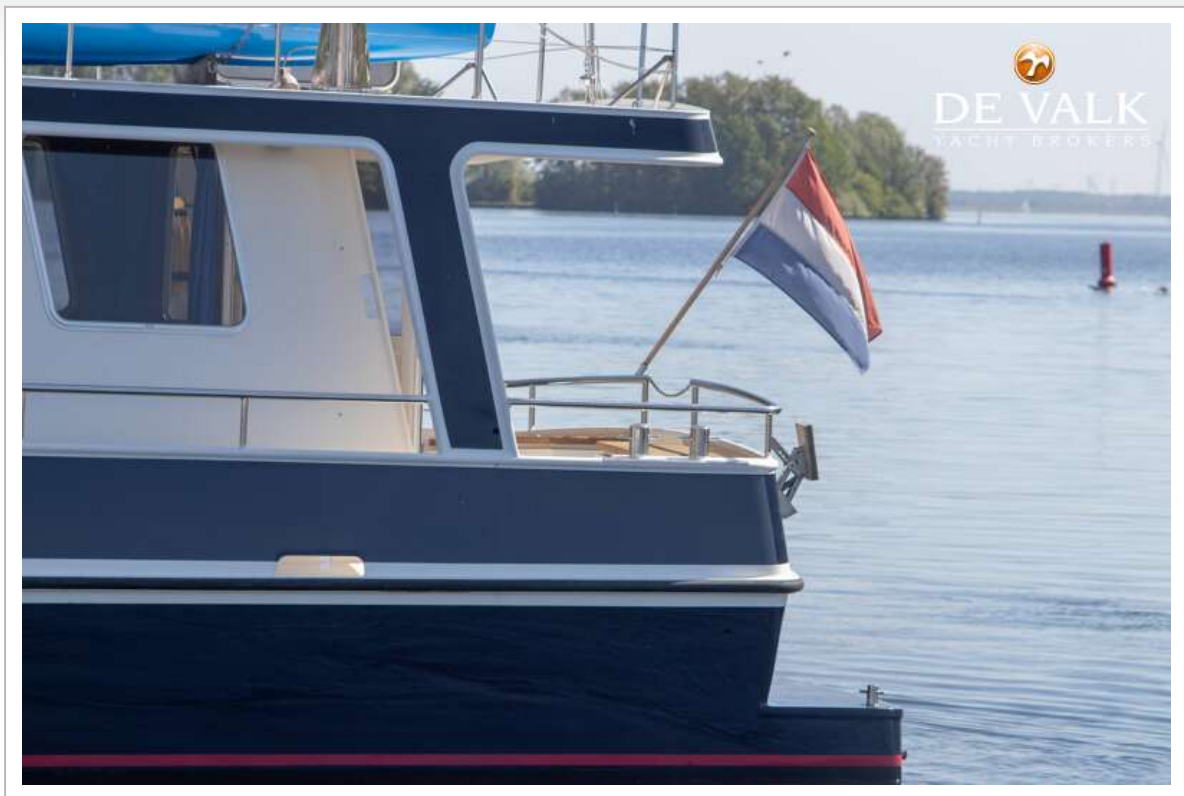
# ALMTRAWLER 1320 AD



# ALMTRAWLER 1320 AD



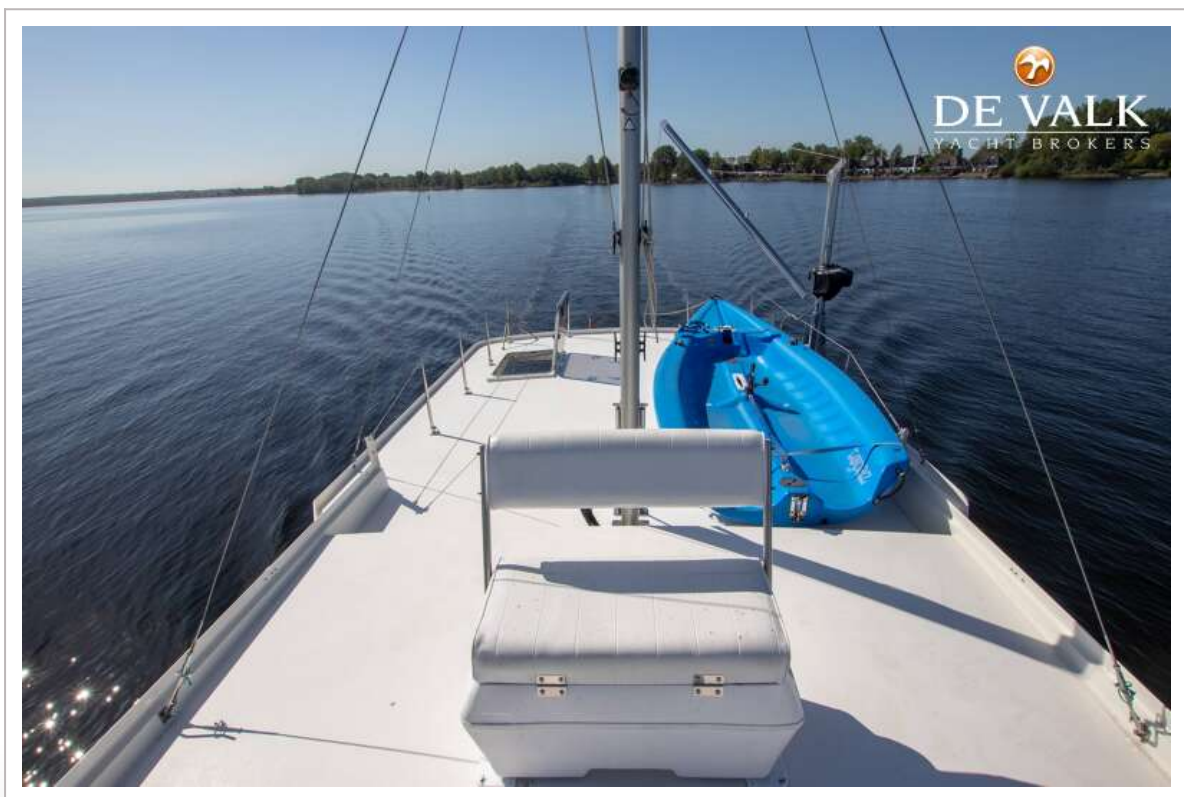
# ALMTRAWLER 1320 AD



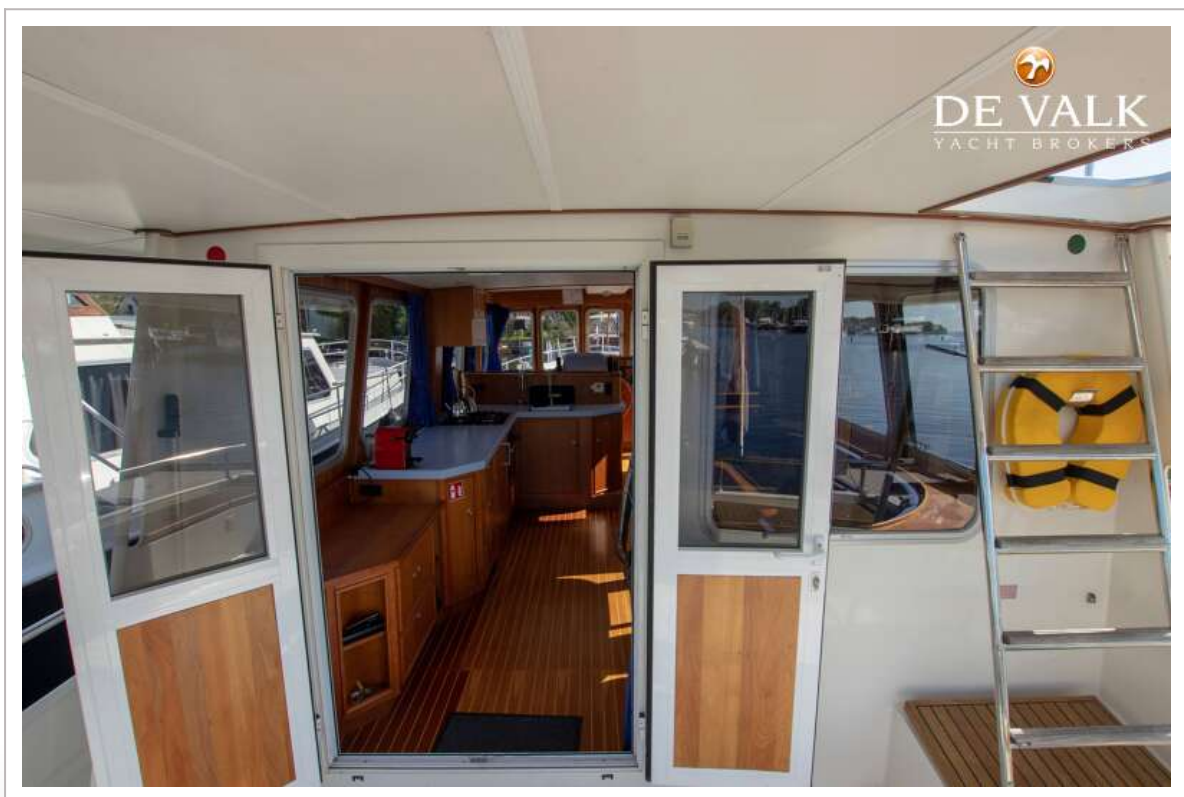
# ALMTRAWLER 1320 AD



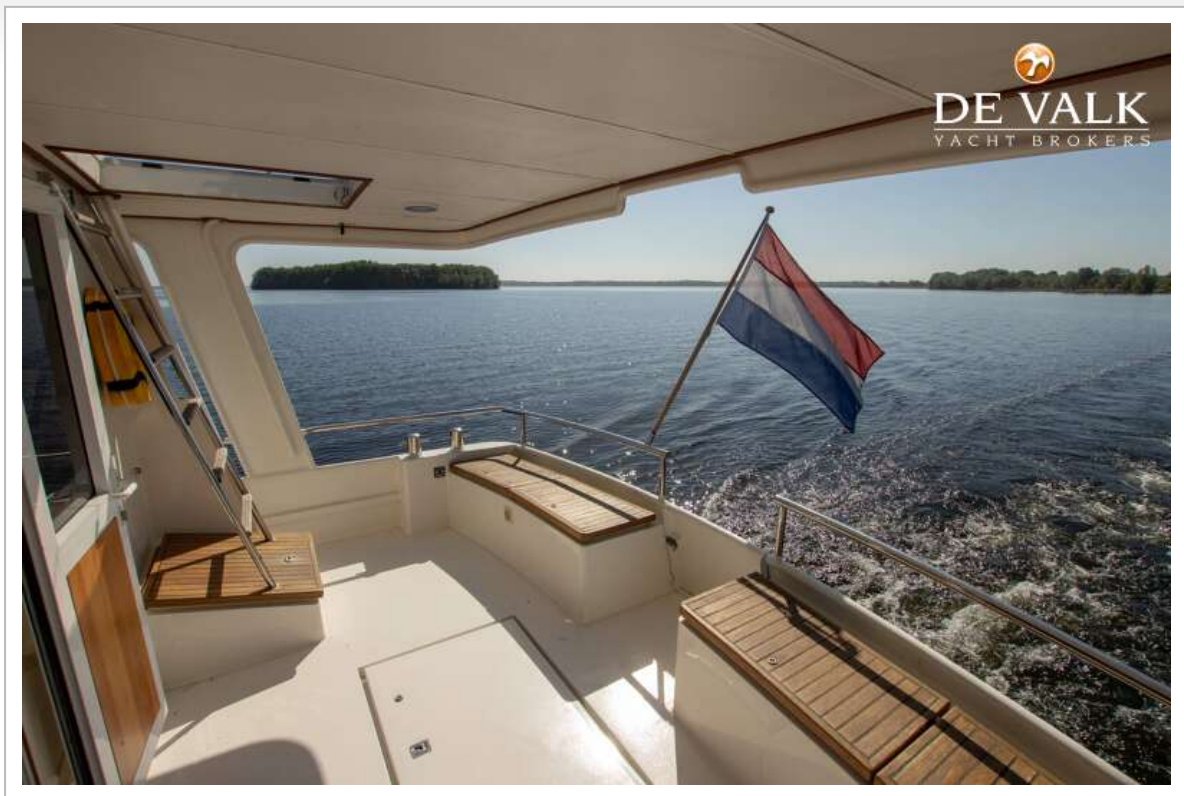
# ALMTRAWLER 1320 AD



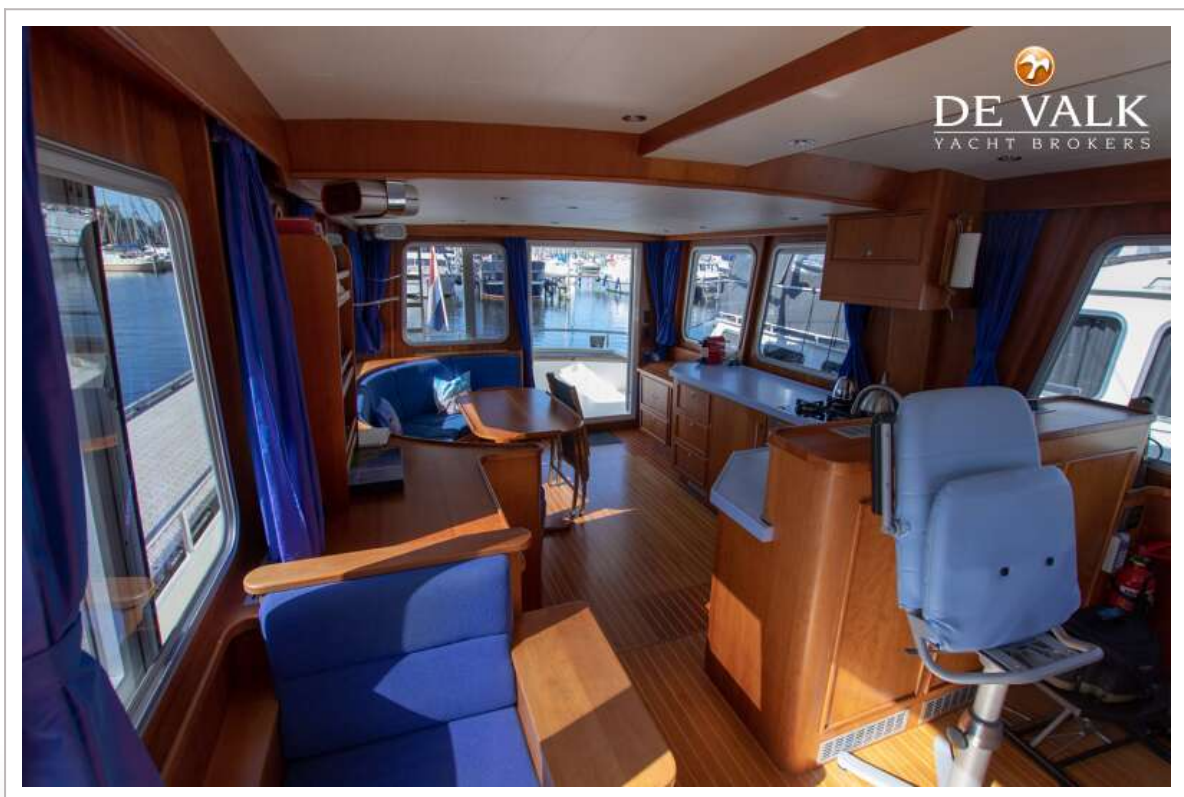
# ALMTRAWLER 1320 AD



# ALMTRAWLER 1320 AD



# ALMTRAWLER 1320 AD



# ALMTRAWLER 1320 AD



# ALMTRAWLER 1320 AD



# ALMTRAWLER 1320 AD



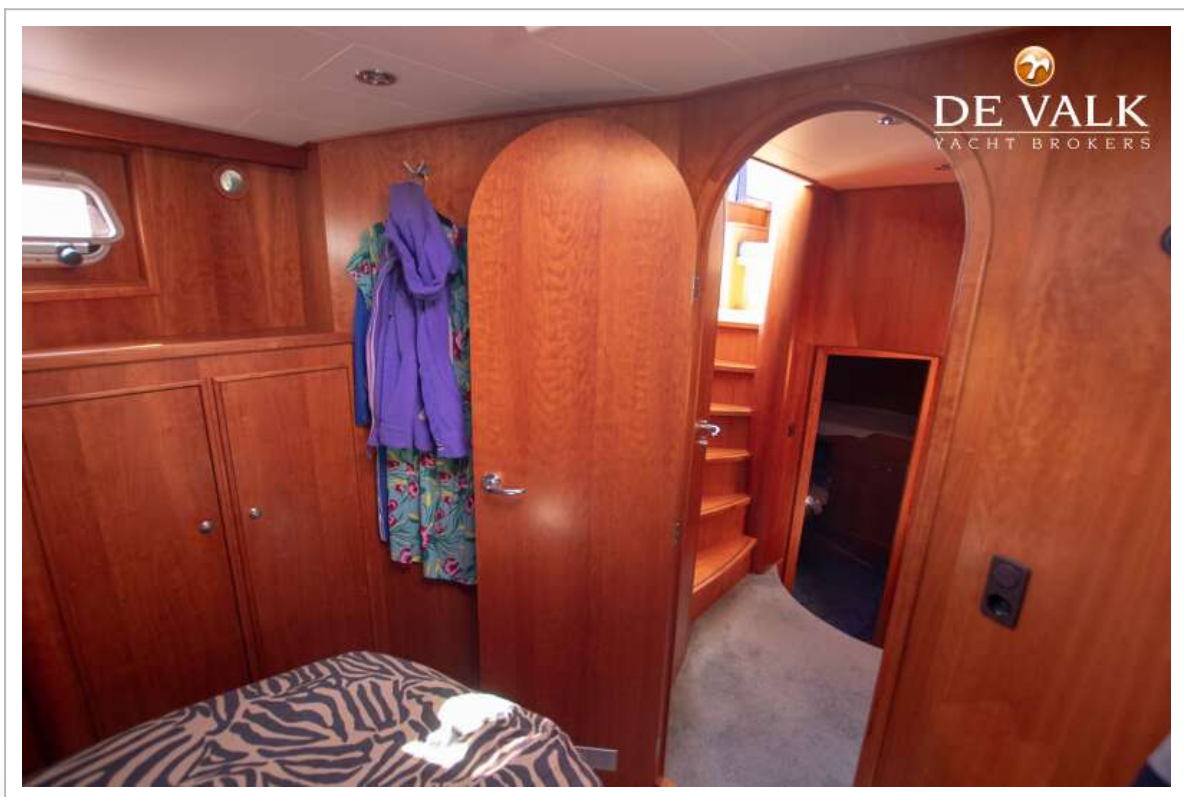
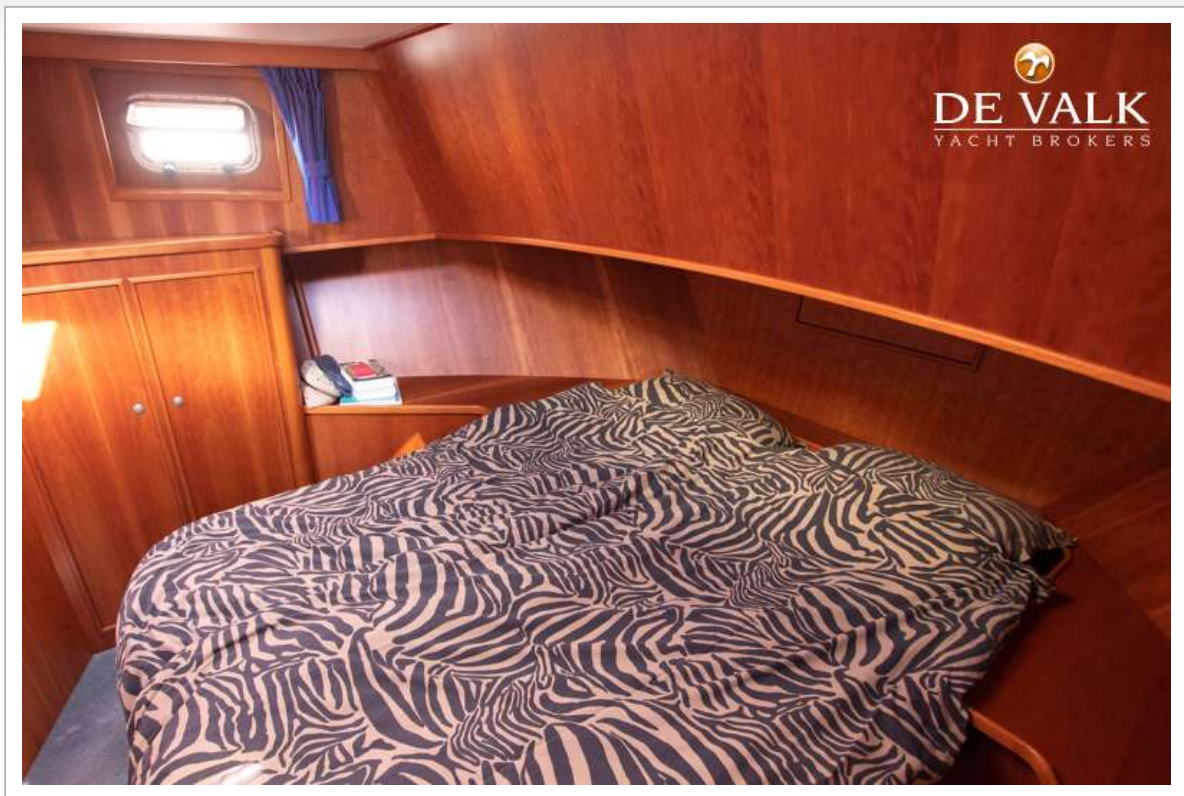
# ALMTRAWLER 1320 AD



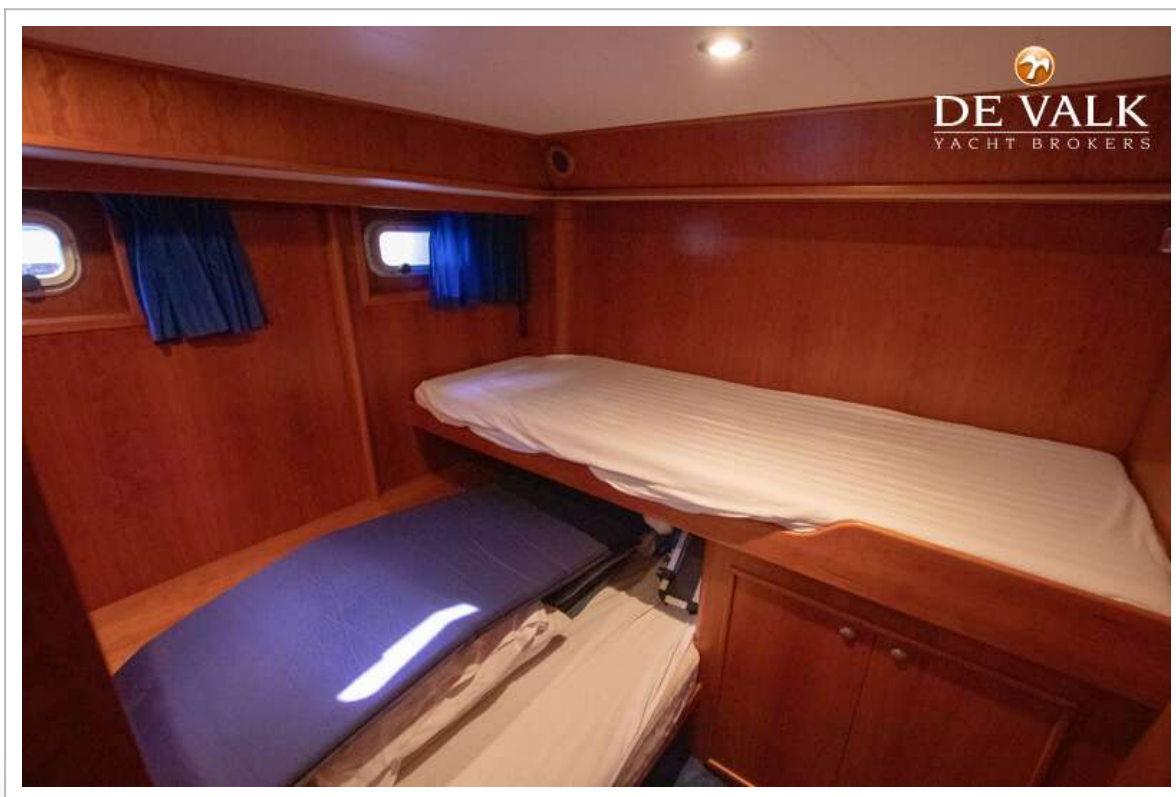
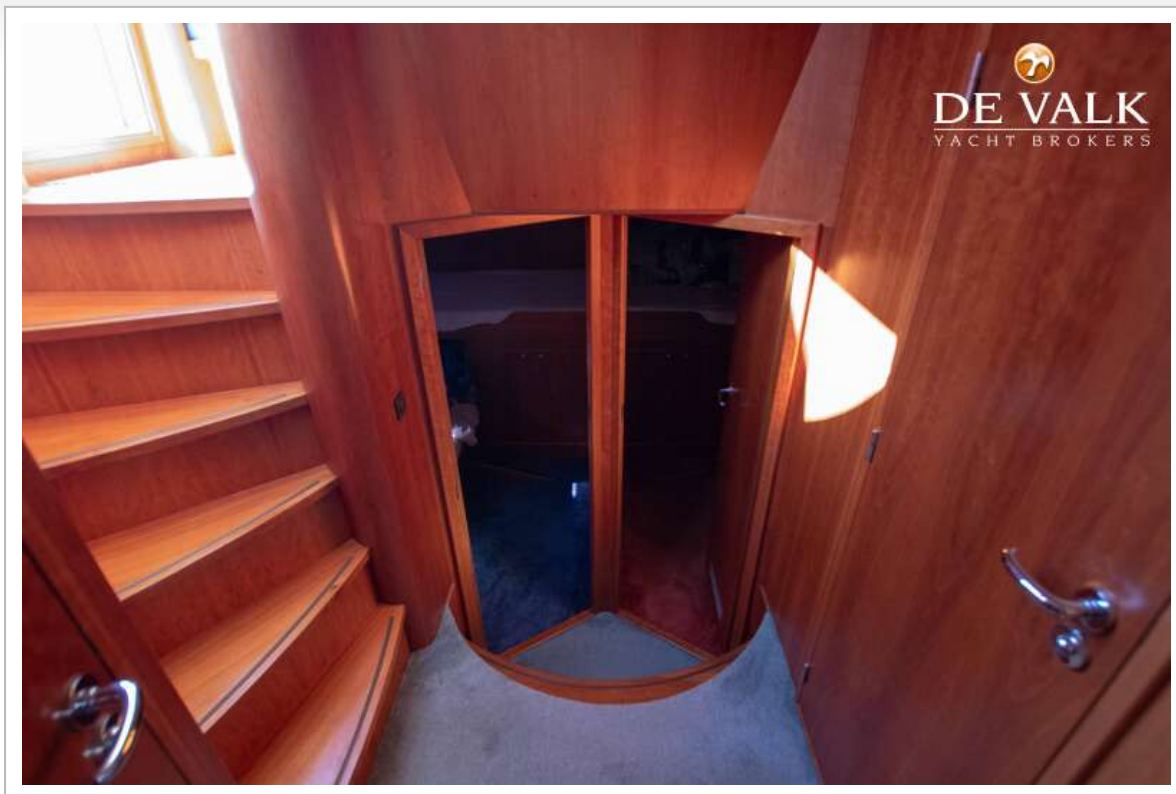
# ALMTRAWLER 1320 AD



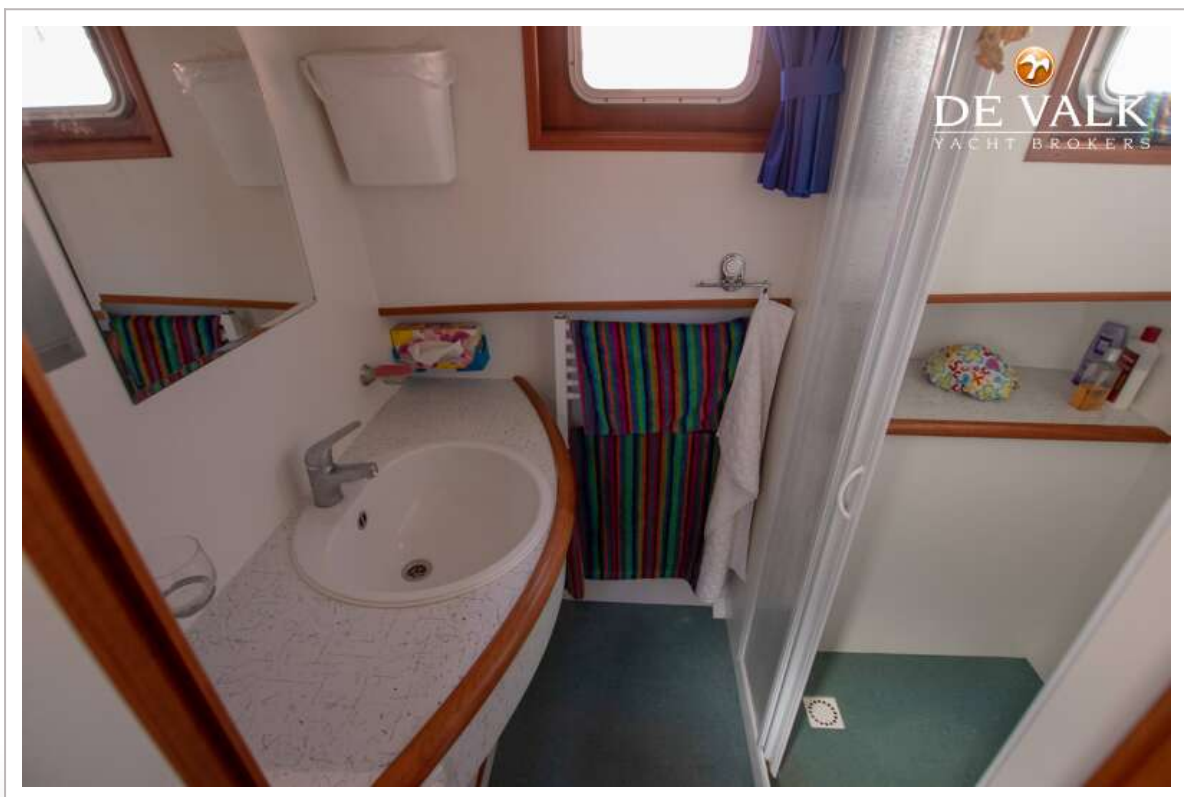
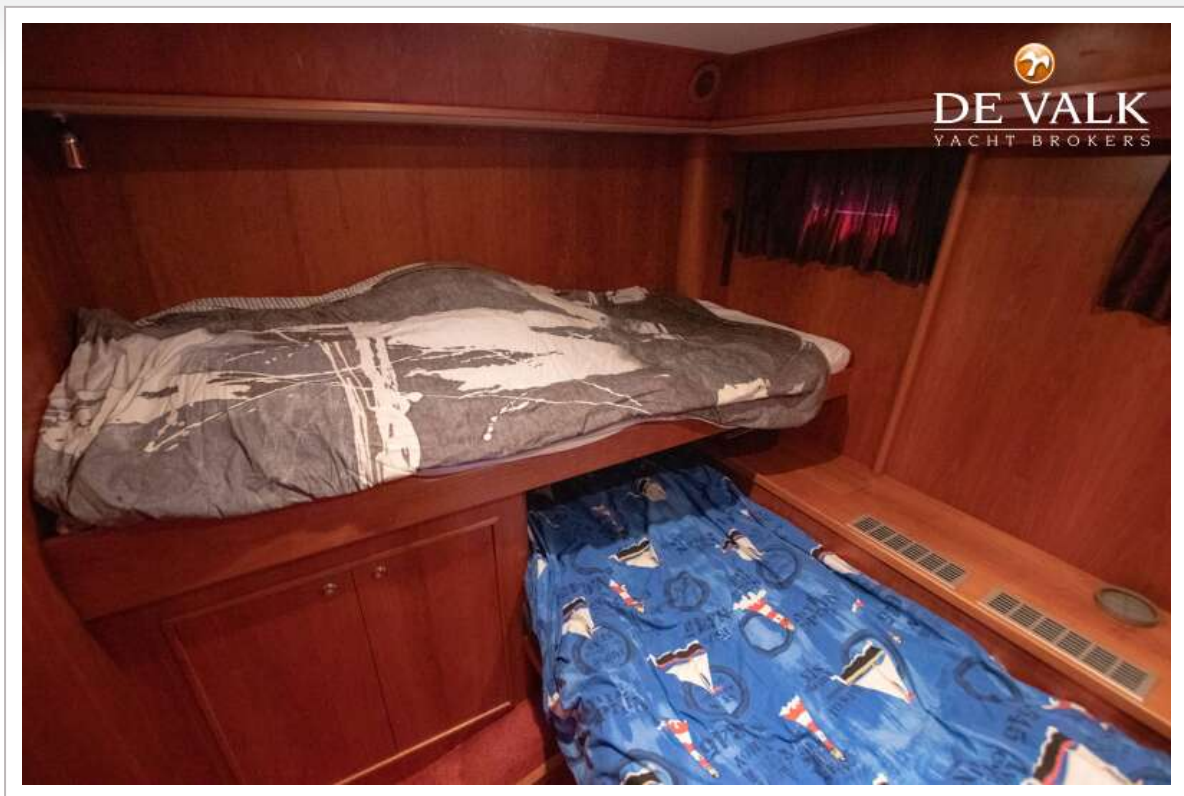
# ALMTRAWLER 1320 AD



# ALMTRAWLER 1320 AD



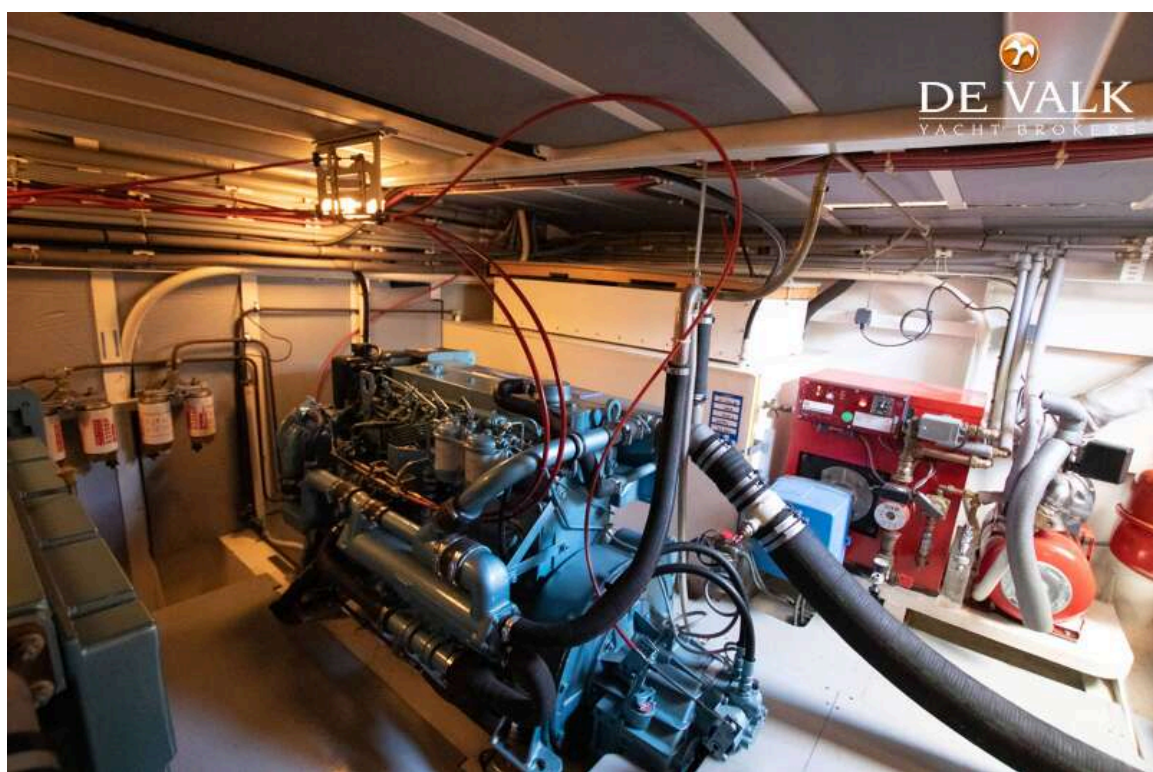
# ALMTRAWLER 1320 AD



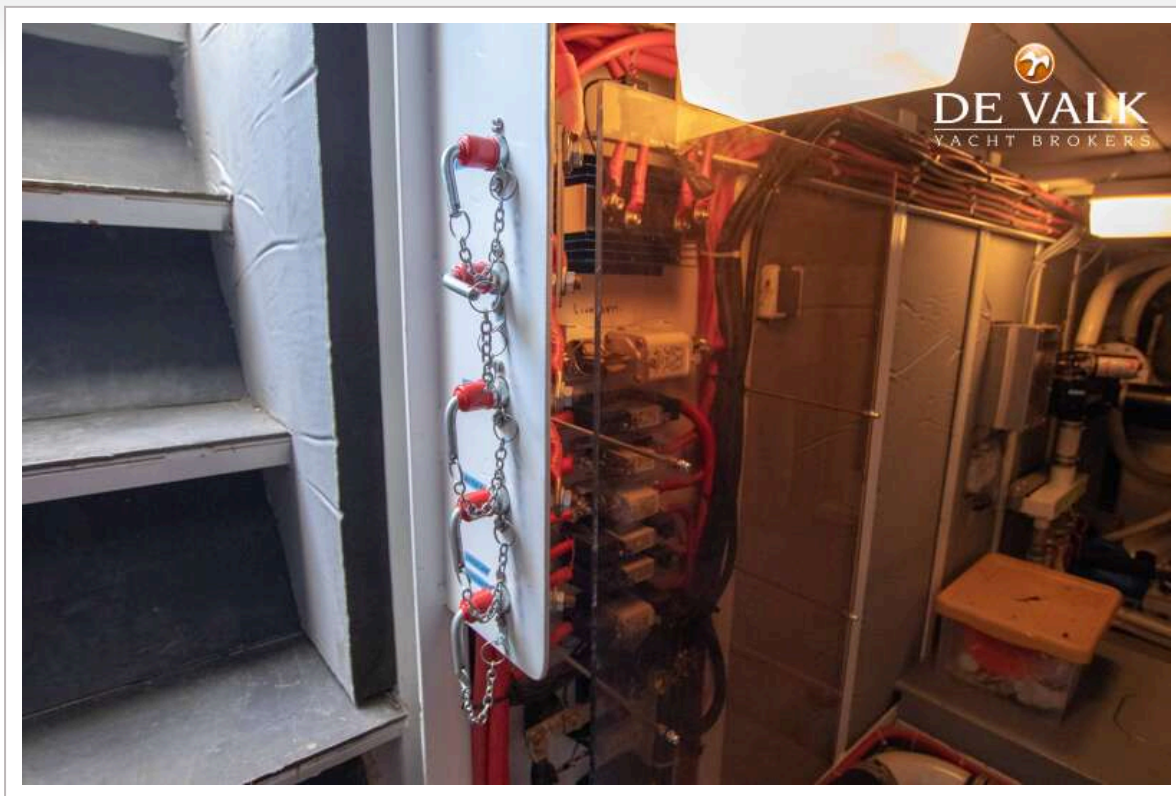
# ALMTRAWLER 1320 AD



# ALMTRAWLER 1320 AD



# ALMTRAWLER 1320 AD



# ALMTRAWLER 1320 AD

