



## NAJAD 391

## BROKER'S COMMENTS

Swedish elegance at its best. With the new improved hull, keel en rudder design the new Najad 391 was a good improvement on the already successful Najad 390 model. The gained sail performance and the known Swedish craftsmanship makes the Najad 391 a very good sailing yacht for longer stays onboard as well as safe an reliable platform for long distance cruising.

*Johan Nooitgedagt*

## SPECIFICATIONS

<b>Dimensions</b>	12.10 x 3.63 x 1.69 (m)	<b>Builder</b>	Najad Varvet Ab
<b>Built</b>	1999	<b>Cabins</b>	2
<b>Material</b>	GRP	<b>Berths</b>	6
<b>Engine(s)</b>	1 x Yanmar 4JH2 - TBE diesel	<b>Hp/Kw</b>	60.00 (hp), 44.16 (kw)
<b>Asking price</b>	sold (VAT )	<b>Lying</b>	at sales office

## CONTACT

<b>Sales office</b>	De Valk Hindeloopen B.V.	<b>Telephone</b>	+31 514 52 40 00
<b>Address</b>	Oosterstrand 1 8713 JS Hindeloopen NL	<b>E-mail</b>	hindeloopen@devalk.nl

## DISCLAIMER

These particulars are given in good faith as supplied but cannot be guaranteed.



## GENERAL

Model	NAJAD 391
Type	sailing yacht
LOA (m)	12,10
LWL (m)	10,10
Beam (m)	3,63
Draft (m)	1,69
Air draft (m)	19,00
Headroom (m)	1,93
Year built	1999
Builder	Najad Varvet Ab
Country	Sweden
Designer	Georg Nissen
Displacement (t)	11,5
Ballast (tonnes)	lead 4,2
CE norm	A
Hull material	GRP
Hull colour	white
Hull shape	round-bilged
Keel type	fin keel - skeg hung rudderblade
Superstructure material	GRP
Rubbing strake	Stainless steel strip - new 2010
Deck material	GRP
Deck finish	teak
Superstructure deck finish	teak
Cockpit deck finish	teak
Dorades	2x
Window frame	aluminium
Window material	tempered glass
Deckhatch	5x
Radar arch	Stainless steel backstay radar mount



Fuel tank (litre)	stainless steel Approx. 275 ltr.
Level indicator (fuel tank)	yes
Freshwater tank (litre)	stainless steel Approx. 350 ltr.
Level indicator (freshwater)	yes
Blackwater tank (litre)	stainless steel Approx. 145 ltr.
Level indicator (blackwater)	yes
Blackwater tank extraction	deck extraction + pump
Wheel steering	mechanical - with leather covered steeringwheel
Emergency tiller	yes

## ACCOMMODATION

Cabins	2
Berths	6
Interior	mahogany
Floor	Varnished teak plywood with holly inlay
Open cockpit	Footrest (removable) stainless steel
Saloon	yes
Headroom saloon (m)	1,93 mtr.
Heating	diesel ducted hot air - Eberspächer
Navigation center	yes
Chart table	yes
Aft Cabin	Owners cabin
Galley	yes
Countertop	Duropol
Sink	Double
Cooker	calor gas - 3 burner - Techimpex - Remote-controlled main gas valve.
Oven	In cooker
Microwave	Electrolux
Fridge	yes
Hot water system	220V + engine 40 ltr.



Water pressure system	electrical
Owners cabin	double bed Aft cabin- with innerspring mattress
Bed length (m)	2 mtr.
Wardrobe	hanging and shelves
Guest cabin 1	v-bed Forward cabin
Bed length (m)	2 mtr.
Wardrobe	hanging and shelves
Bathroom	shared
Toilet	Vetus
Toilet system	electric
Wash basin	
Shower	

## MACHINERY

No of engines	1
Make	Yanmar
Type	4JH2 - TBE
HP	60
kW	44,16
Fuel	diesel
Year installed	1999
Maximum speed (kn)	7
Cruising speed (kn)	6,5
Engine hours	3000
Engine cooling system	freshwater heat exchanger
Drive	shaft
Engine controls	bowden cable - new 2016 - Spare cable
Gearbox	mechanical
Bowthruster	electric Sidepower 7 pk - foot-operated
Exhaust	watercooled
Propeller type	Max-prop



<b>Propeller shaft material</b>	stainless steel
<b>Shaft lubrication</b>	water
<b>Manual bilge pump</b>	yes
<b>Electric bilge pump</b>	yes
<b>Electrical installation</b>	12 / 220 Volt
<b>Start battery</b>	1x AMG 95Ah - new 2019
<b>Service battery</b>	3x AMG 160 Ah - new 2020
<b>Battery monitor</b>	Victron BMV battery monitor
<b>Battery charger/inverter</b>	04-2020 new Victron MultiPlus 12/2000/80Ah with digital Multi control
<b>Shorepower</b>	with cable
<b>Insulation transformer</b>	Victron STI30
<b>Extra info</b>	The engine has been well maintained. In recent years these parts have been replaced: cooling water pump, 4 new injectors, the damper plate, V-belt etc....

## NAVIGATION

<b>Compass</b>	Suunto D-135
<b>Multi control display</b>	2x Garmin GMI 20 - new 05-2021
<b>VHF</b>	Shipmate RS8300 (inside and outside)
<b>Autopilot</b>	Garmin with remote control - new 2016
<b>Radar</b>	Garmin 18D
<b>Radar/GPS/plotter</b>	Garmin 5012 - new 2010
<b>Electronic chart(s)</b>	New 05-2021
<b>AIS transceiver</b>	Garmin 600 - new 2016
<b>Navigation lights</b>	yes
<b>Extra info</b>	large cockpit light on radar pole

## EQUIPMENT

<b>Fixed windscreen</b>	yes
<b>Sprayhood</b>	yes



Cockpit cover	yes
Cockpit table	yes
Bathing platform	yes
Boarding ladder	stainless steel
Bow ladder	yes
Deck shower	Yes
Anchor	Bruce - 20kg
Anchor chain	Approx. 60mtr.
Windlass	manual Lofrans
Capstan	yes
Deck wash	yes
Grab rail (superstructure)	stainless steel
Pushpit	With 2 seats
Pulpit	yes
Lifebuoy	yes
Radar reflector	Tri-lens
Fenders	yes
Mooring lines	yes
Radio-cd player	Sony
Cockpit speakers	2
Speakers in salon	4
Fire extinguisher	2x

## RIGGING

Rigging	sloop
Standing rigging	wire
Brand mast	Seldén
Material mast	aluminium
Spreaders	2 pair
Mainsail	Uk Halsey-De Vries - 37m² - 2012 - inspected and maintained every year - new mainsheet 2020



<b>Stoway mast</b>	yes
<b>Genoa II</b>	Uk Halsey-De Vries - 48m <sup>2</sup> - 2010 - inspected and maintained every year
<b>Genoa III</b>	Carlson - 43m <sup>2</sup> - original and not used by owner
<b>Genoa furler</b>	Harken MKII
<b>Gennaker</b>	Uk Halsey-De Vries - 110m <sup>2</sup> - 2012 - inspected and maintained every year
<b>Reefing System</b>	main in-mast furling
<b>Backstay adjuster</b>	mechanical - Seld
<b>Boomvang</b>	gasspring
<b>Primary sheet winch</b>	2x Harken 44 two speed
<b>Genoa sheetwinches</b>	2x Harken 53 two speed electric
<b>Halyard winches</b>	2x Harken on mast
<b>Spi-pole</b>	Carbon

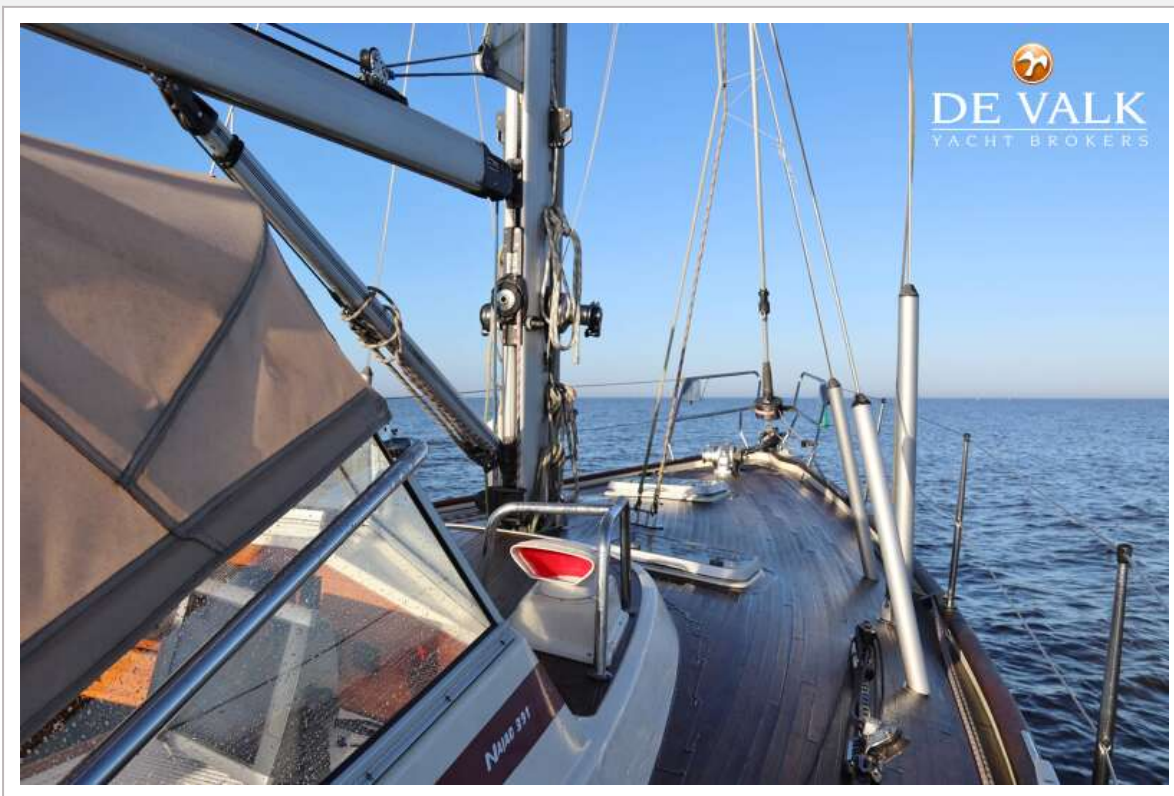




# NAJAD 391

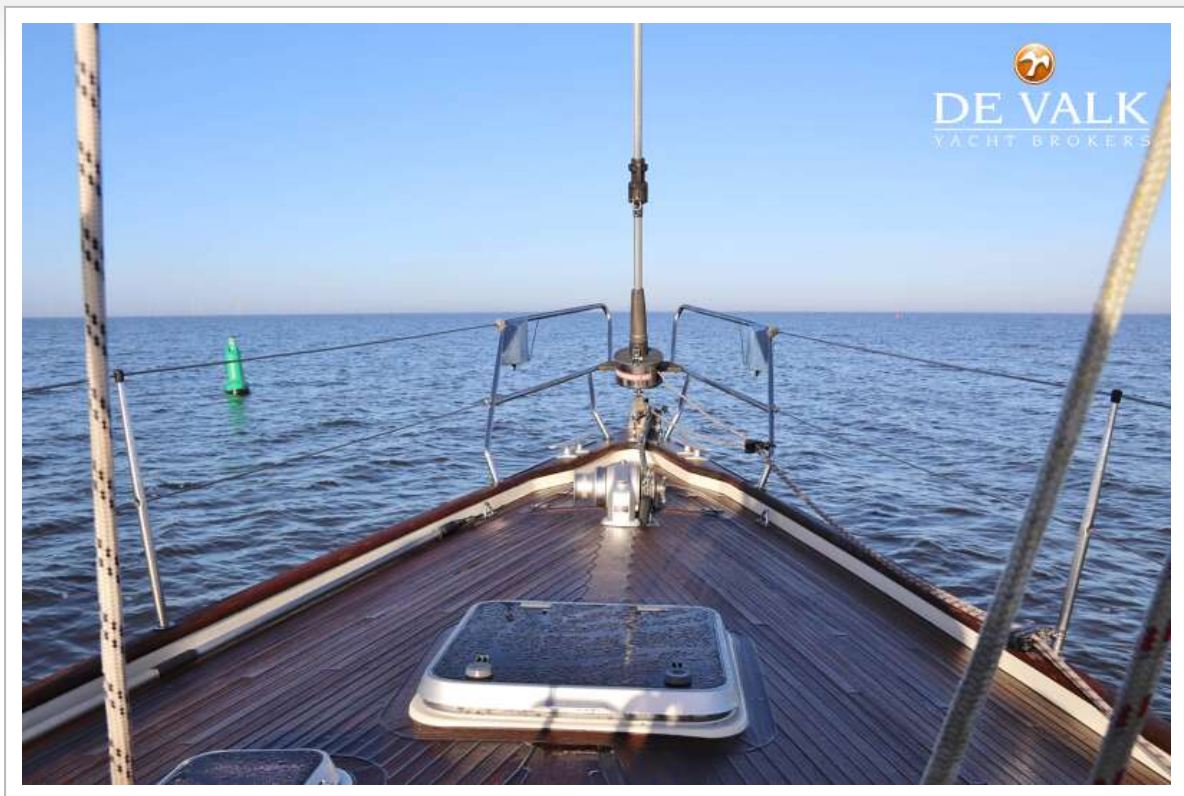


# NAJAD 391





# NAJAD 391



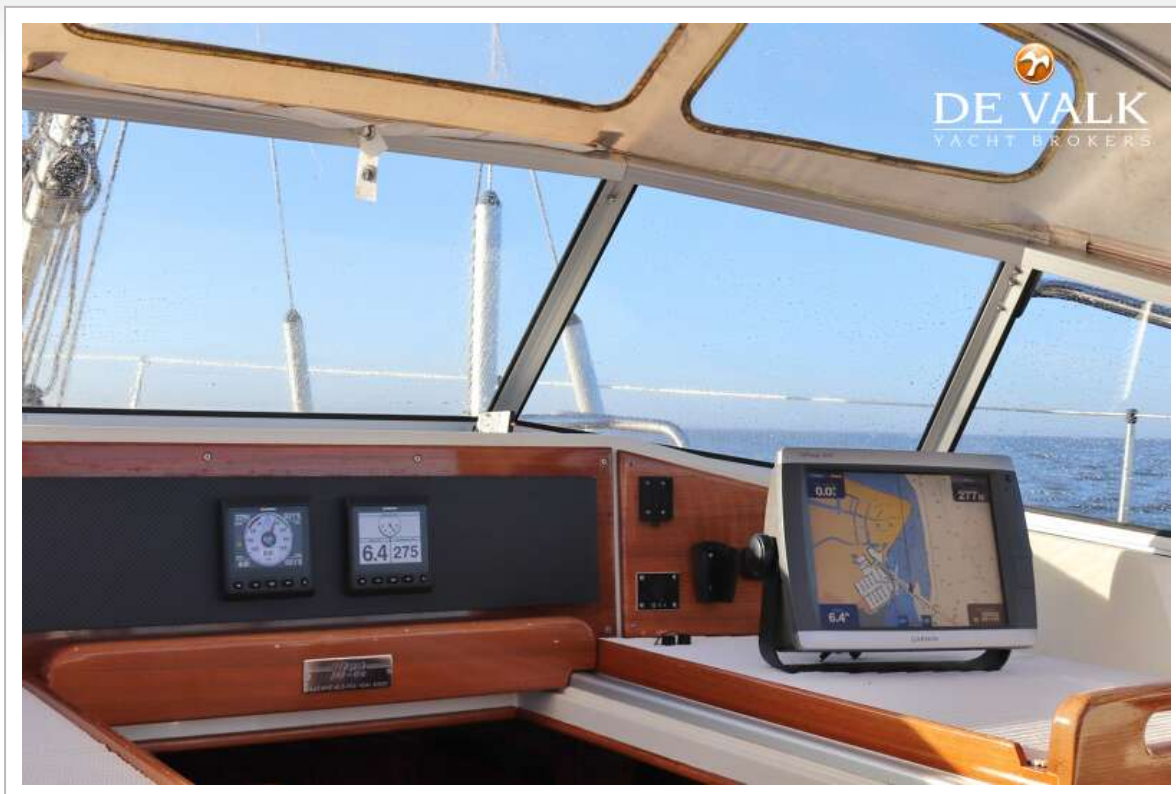




# NAJAD 391

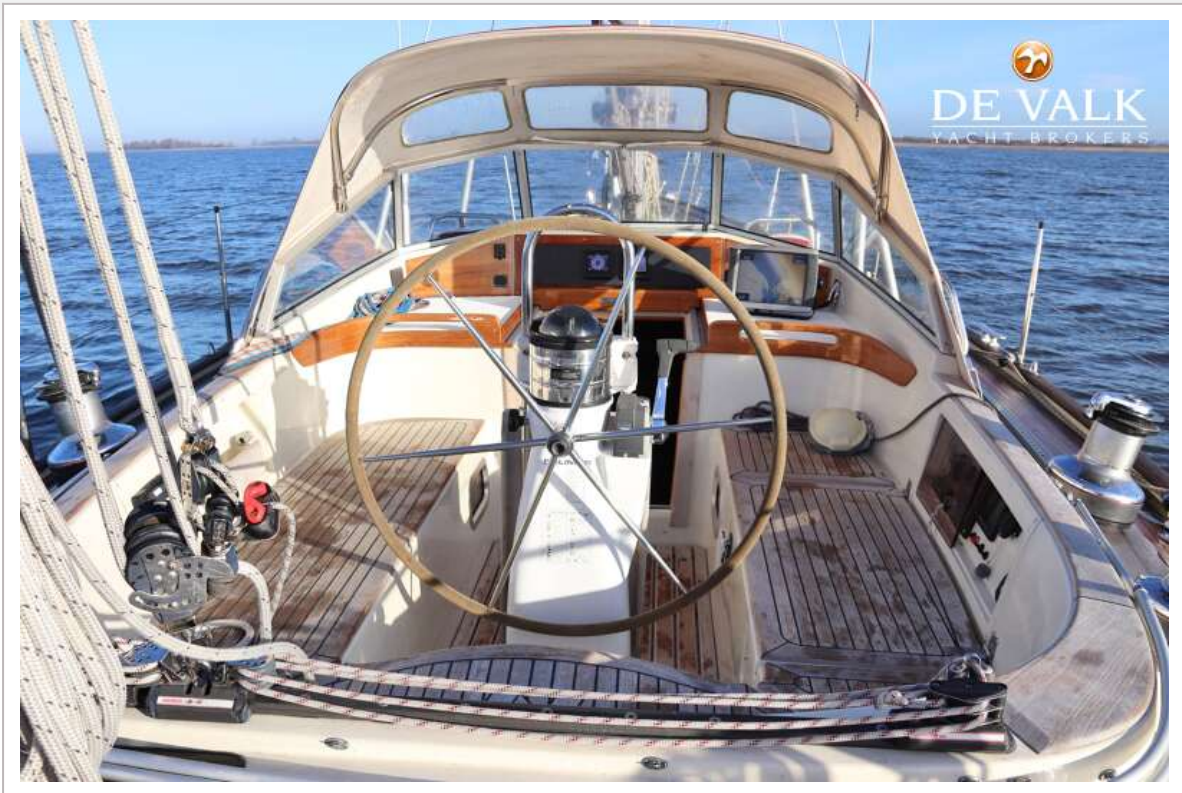


# NAJAD 391





# NAJAD 391



# NAJAD 391



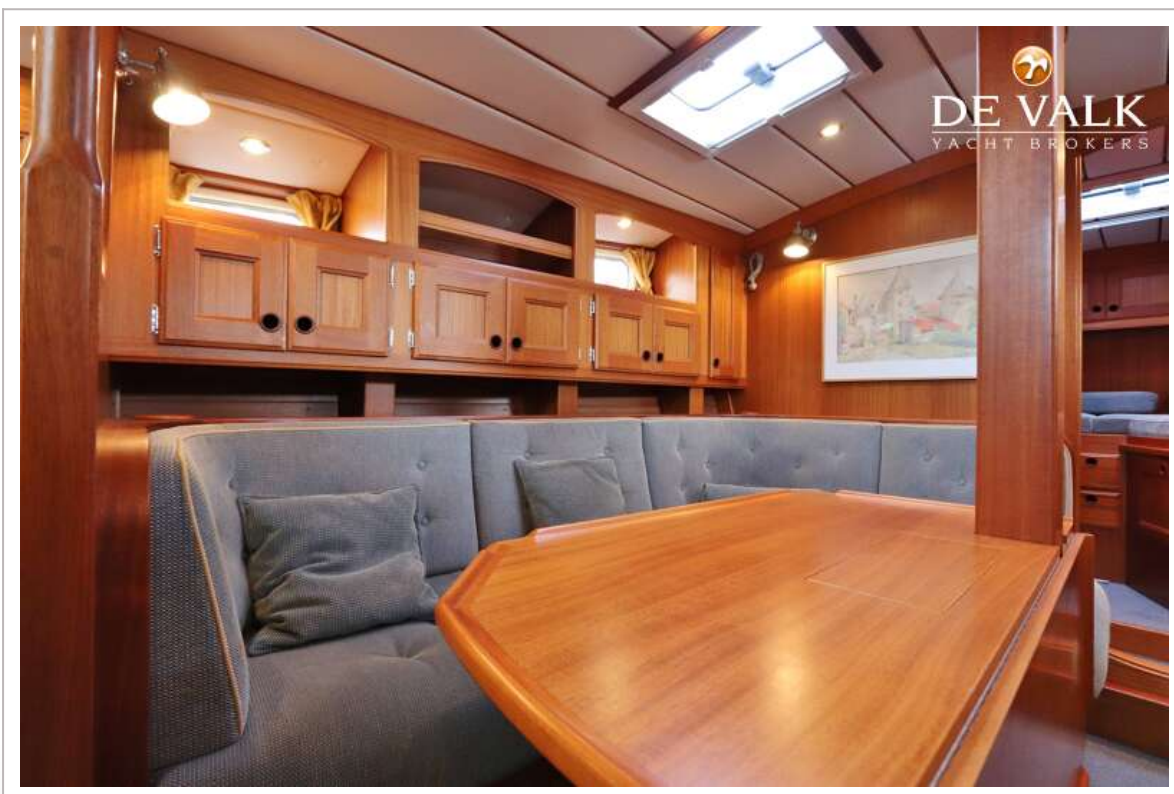








# NAJAD 391

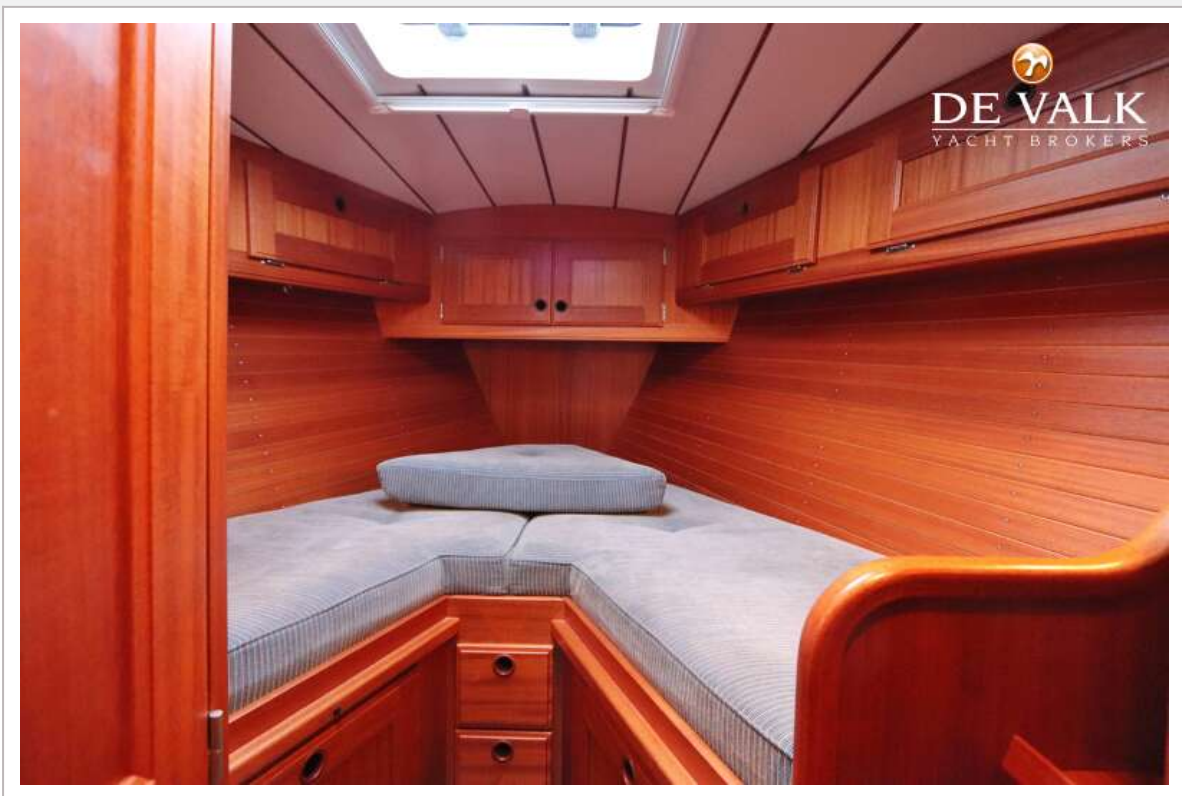


# NAJAD 391





# NAJAD 391

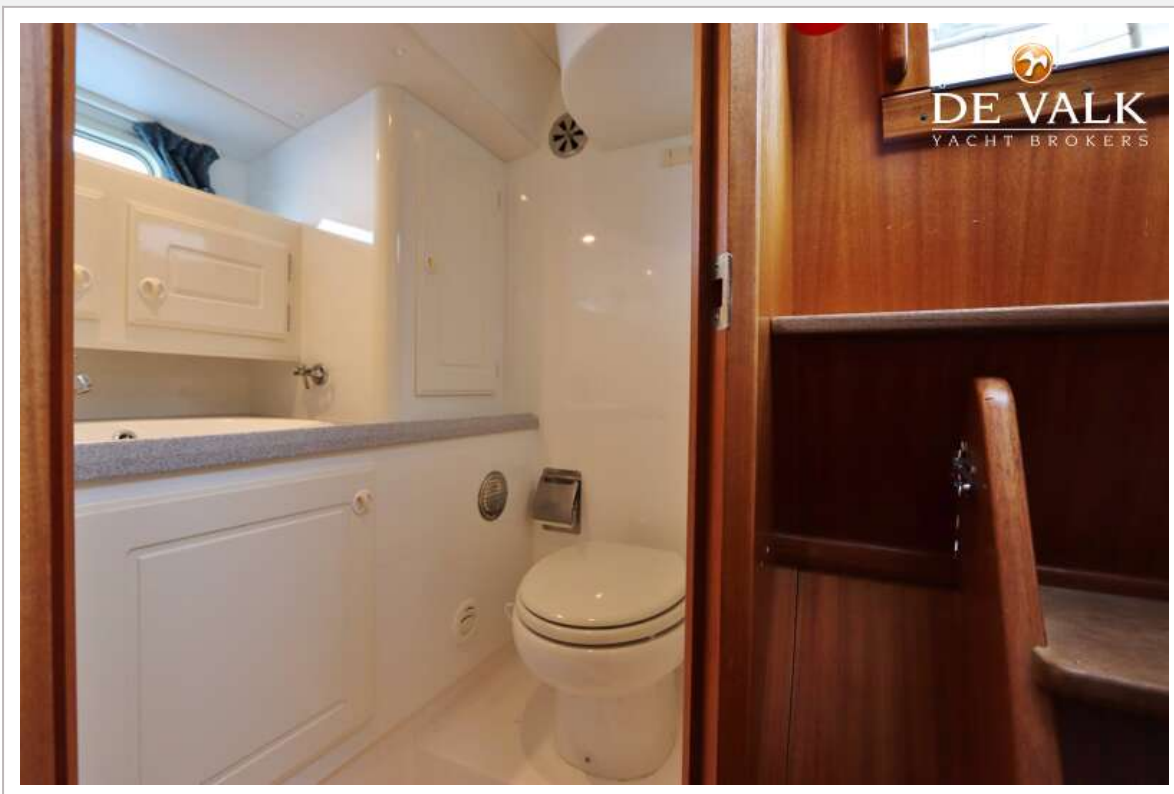


# NAJAD 391

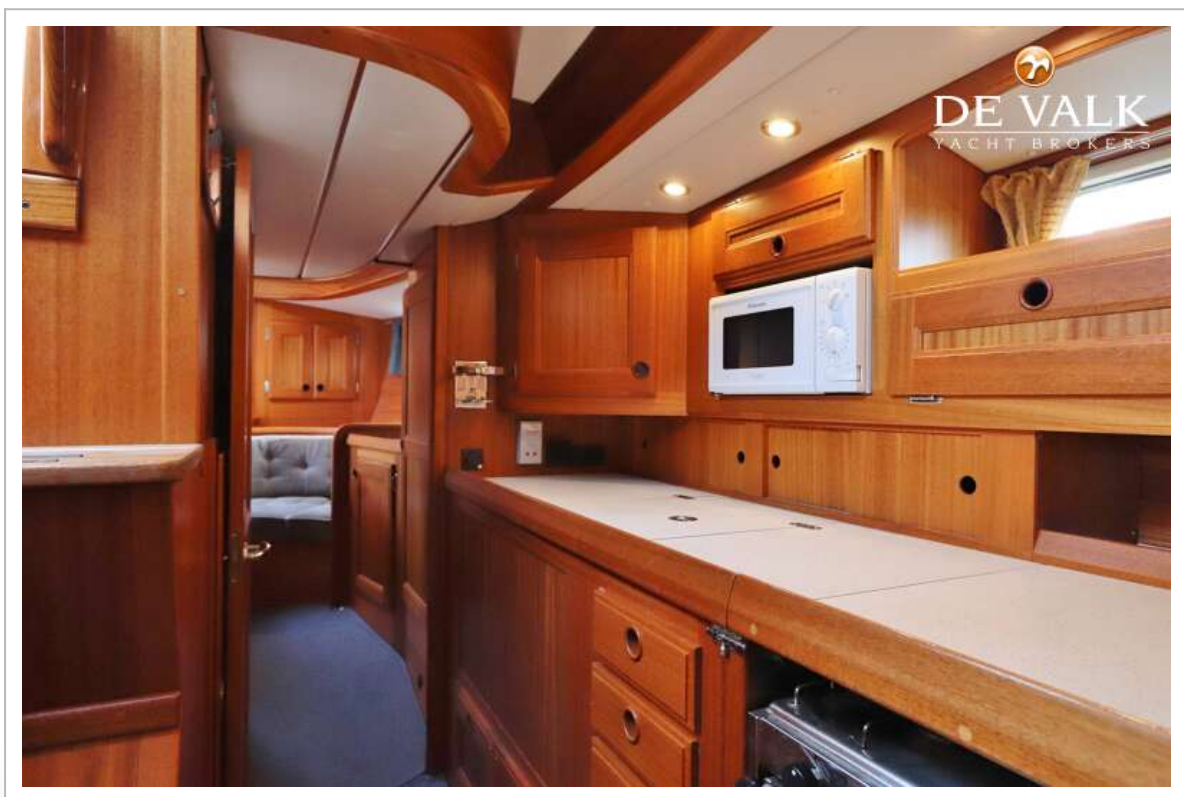












# NAJAD 391





# NAJAD 391

