



DE VALK
YACHT BROKERS



PUFFIN 42



DE VALK
YACHT BROKERS

BROKER'S COMMENTS

This Puffin 42 offers safety, comfort and reliability. The combination of her shallow draft (1.05/2.35) and deckhouse configuration makes her ideal for living aboard or discover the world. This Puffin 42 "Papegaaiduiker" was built to use and onboard living. A new Volvo Penta D2-75 incl propeller and exhaust has been installed in 2018. A new mainsail has been made by DeVries in 2018. *** This Yacht is in need of a deeper refit and review of a number of items. Please consult us for details. Ready for visitation in Northern Germany by appointment.

Jürgen Jacobs

SPECIFICATIONS

Dimensions	12.73 x 4.20 x 2,35 / 1.05 (m)	Builder	Scheepsbouw Kroes
Built	1996	Cabins	1
Material	Steel	Berths	5
Engine(s)	1 x Volvo Penta D2-75F diesel	Hp/Kw	75.00 (hp), 55.20 (kw)
Asking price	sold (VAT)	Lying	contact sales office

CONTACT

Sales office	De Valk Hamburg	Telephone	+49 40 46 000 999
Address	Domstraße 11 20095 Hamburg DE	E-mail	hamburg@devalk.nl

DISCLAIMER

These particulars are given in good faith as supplied but cannot be guaranteed.



GENERAL

Model	PUFFIN 42
Type	sailing yacht
LOA (m)	12,73
LWL (m)	11,20
Beam (m)	4,20
Draft (m)	1,05
Draft min (m)	2,35
Air draft (m)	21,50
Headroom (m)	2,00
Year built	1996
Builder	Scheepsbouw Kroes
Country	The Netherlands
Designer	Olivier van Meer
Displacement (t)	19
Ballast (tonnes)	lead 4,2
Hull material	steel
Hull colour	blue
Hull thickness (mm)	15 / 10 / 5
Hull shape	round-bilged
Keel type	centreboard
Superstructure material	steel
Superstructure (mm)	4
Deck plate thickness (mm)	4
Rubbing strake	steel
Deck material	steel
Deck finish	non-skid paint Coelan Farb Chips
Superstructure deck finish	non-skid paint
Cockpit deck finish	teak Paint and
Antifouling (year)	2015
Dorades	3



Window frame	brass
Window material	tempered glass
Deckhatch	5x and 2x dormer
Portholes	brass
Insulation	foam plates
Radar arch	non collapsible
Fuel tank (litre)	polyethylene 90
Level indicator (fuel tank)	yes
Freshwater tank (litre)	steel 2 separate tanks - a total of 900 liters
Level indicator (freshwater)	yes
Blackwater tank (litre)	steel
Blackwater tank extraction	deck extraction + pump
Wheel steering	hydraulic
Outside helm position	

ACCOMMODATION

Cabins	1
Berths	5
Interior	mahogany
Floor	parquet
Open cockpit	yes
Deck saloon	yes
Saloon	yes
Headroom saloon (m)	>2
Heating	stove diesel Refleks Oil-Oven Webasto 5L, presently disfunctional
Chart table	yes
Dinette	yes
Galley	yes
Countertop	stainless steel
Sink	stainless steel



Cooker	calor gas Broadwater Marine stove - 4 burner
Oven	In cooker
Fridge	With freezer
Hot water system	220V + engine
Water pressure system	electrical
Owners cabin	double bed
Bed length (m)	>2
Wardrobe	drawers and shelves
Toilet	separate
Toilet system	manual
Wash basin	at the toilet
Shower	separate
Guest cabin 1	double bed
Bed length (m)	>2
Guest cabin 2	single bed
Bed length (m)	>2
Extra info	New mattresses and upholstery in 2019

MACHINERY

No of engines	1
Make	Volvo Penta
Type	D2-75F
HP	75
kW	55.20
Fuel	diesel
Year installed	2018
Maximum speed (kn)	7
Cruising speed (kn)	6,5
Engine hours	200
Engine cooling system	freshwater heat exchanger
Drive	shaft



Engine controls	bowden cable
Gearbox	mechanical
Bowthruster	electric Vetus incl new Battery (2021)
Exhaust	watercooled
Thrust bearing	yes
Propeller type	fixed
Propeller blades	3
Propeller shaft material	stainless steel
Shaft lubrication	water
Manual bilge pump	yes
Electric bilge pump	yes
Electrical installation	12 volt
Batteries	yes
Start battery	1x 90Ah - maintenance free
Service battery	2x 175Ah - semi-traction
Bowthruster battery	1x 180Ah (new 2021)
Battery monitor	Vetus BW-3
Battery charger	Sterling automatic charger, new in 2018
Diode battery combiners	yes
Shorepower	with cable
Extra info	New Diesel tank 90l

NAVIGATION

Compass	Cassens & Plath
Electric compass	Autohelm ST30 COMPASS
Depth sounder	Raymarine i70 Tridata System
Log	Raymarine i70 Tridata System
Windset	Raymarine i70 Tridata System
VHF	Sailer 6215 DSC
GPS	Furuno GP-32
Radar/GPS/plotter	Furuno Navnet c-map nt



Electronic chart(s)	yes
Personal MOB transmitter	yes
Navigation lights	yes

EQUIPMENT

Fixed windscreen	yes
Winter cover	does not cover the whole ship
Cockpit table	one large and one small
Boarding ladder	stainless steel
Anchor	CQR Plough
Anchor chain	yes
Anchor 2	Delta
Windlass	manual
Capstan	yes
Sea railing	stainless steel
Grab rail (superstructure)	stainless steel
Pushpit	yes
Pulpit	yes
Life raft	But outdated
Lifebuoy	yes
Danbuoy	yes
Safety lines on deck	yes
Radar reflector	yes
Fenders	yes
Mooring lines	yes
Spare parts	yes
Radio-cd player	JVC
iPod connection	Op radio
Speakers in salon	yes
Clock - barometer	yes
Fire extinguisher	yes



RIGGING

Rigging	cutter
Standing rigging	wire
Brand mast	Sparcraft
Material mast	aluminium
Spreaders	2 pair
Mainsail	De Vries, new in 2018
Mainsail cover	yes
Cutterstay	yes
Jib	27m ² - 2011
Genoa	46m ² - 2012
Genoa furler	yes
Cutter furler	yes
Spinnaker	120m ²
Reefing System	slabreefing
Boomvang	gasspring
Primary sheet winch	1x Lewmar 40
Secondary sheet winch	2x Lewmar 44
Genoa sheetwinches	2x Lewmar 48
Halyard winches	2x Lewmar 40 on mast
Reefing winch	1x Lewmar 16 on mast
Spi-pole	aluminium

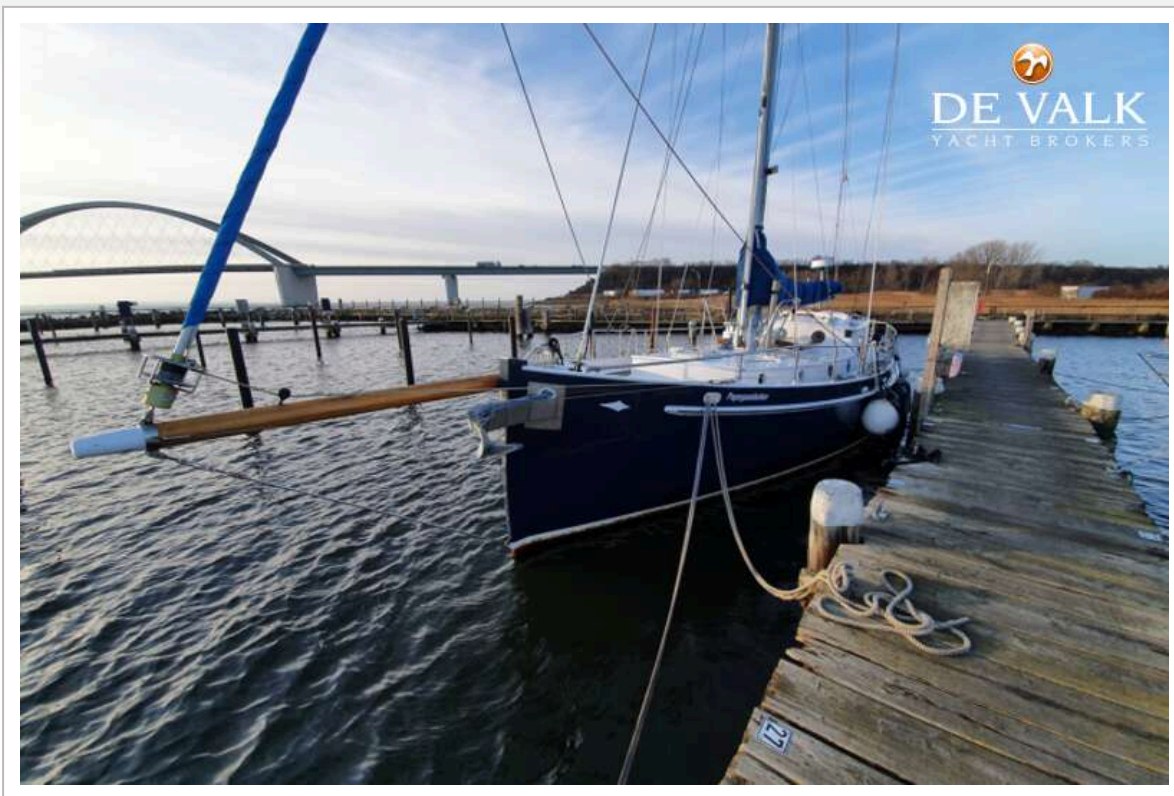


PUFFIN 42



PUFFIN 42

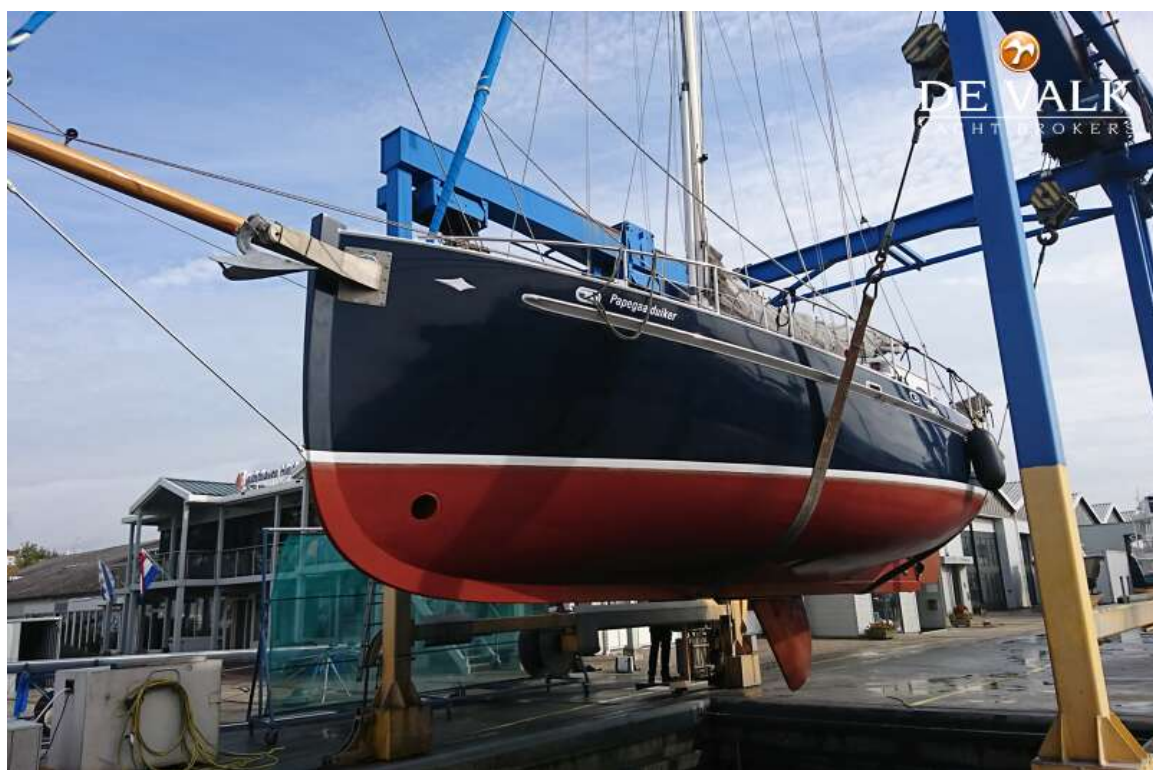




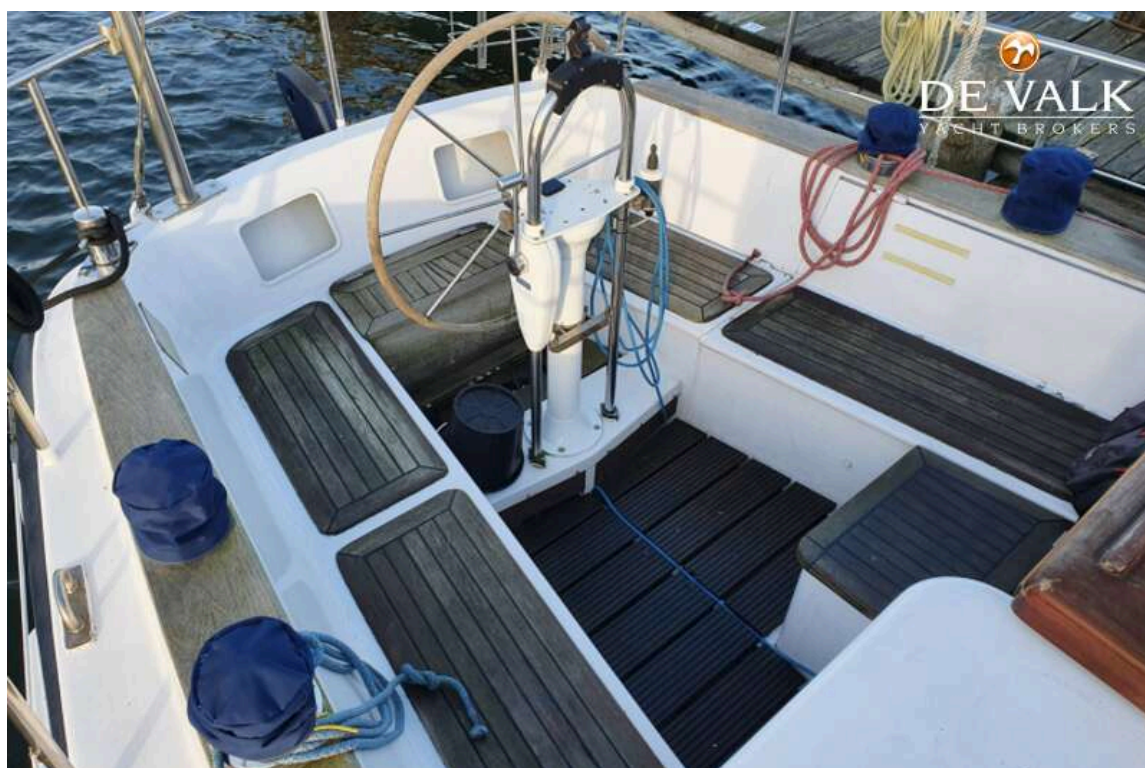
PUFFIN 42



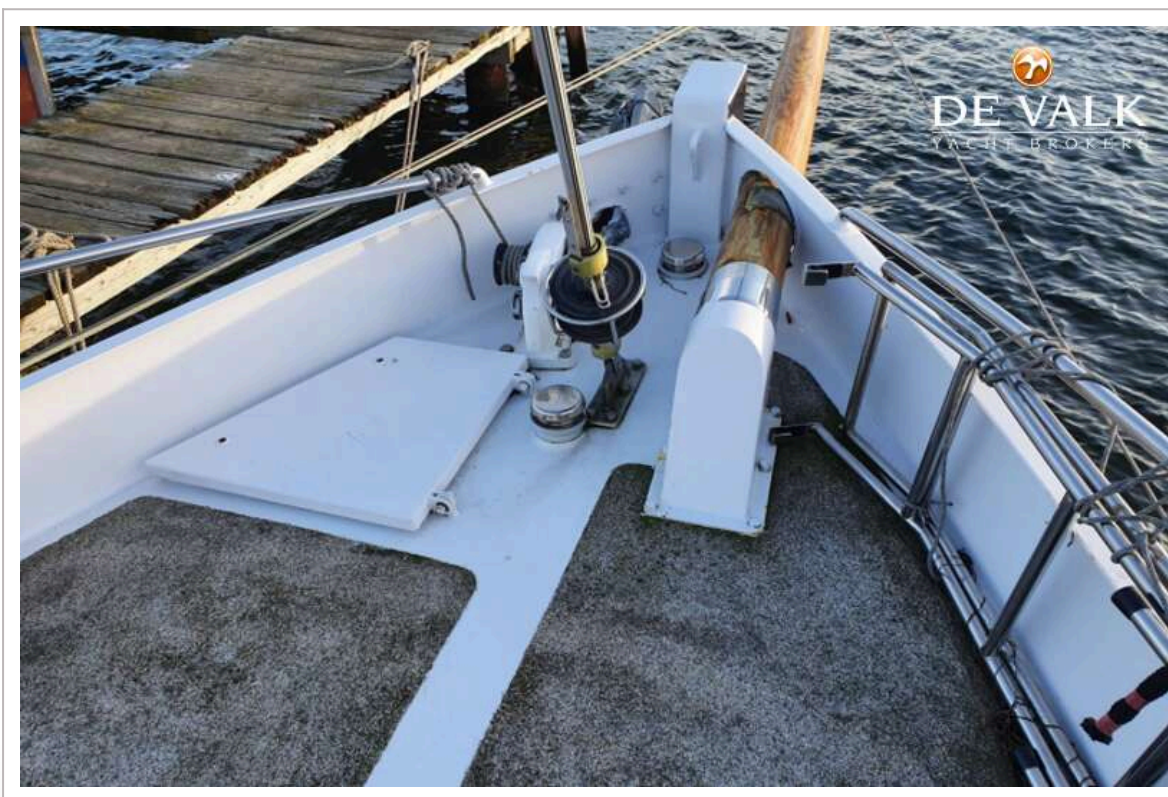




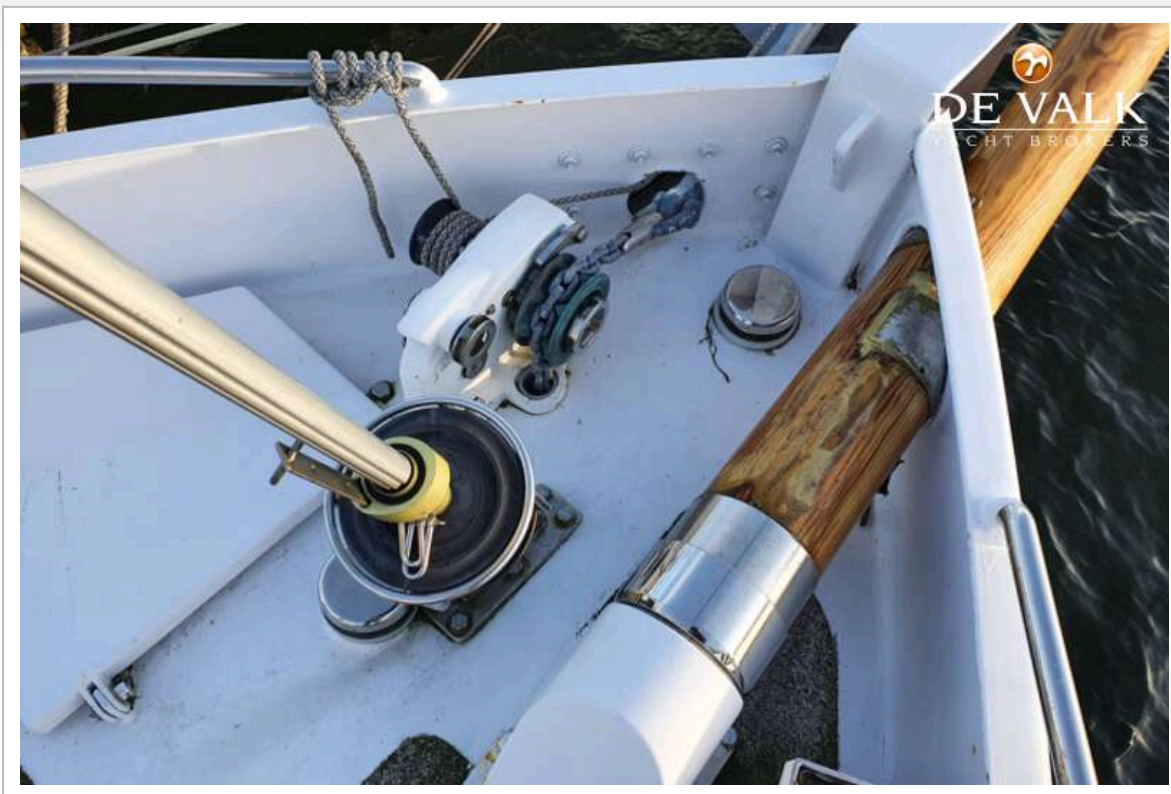
PUFFIN 42



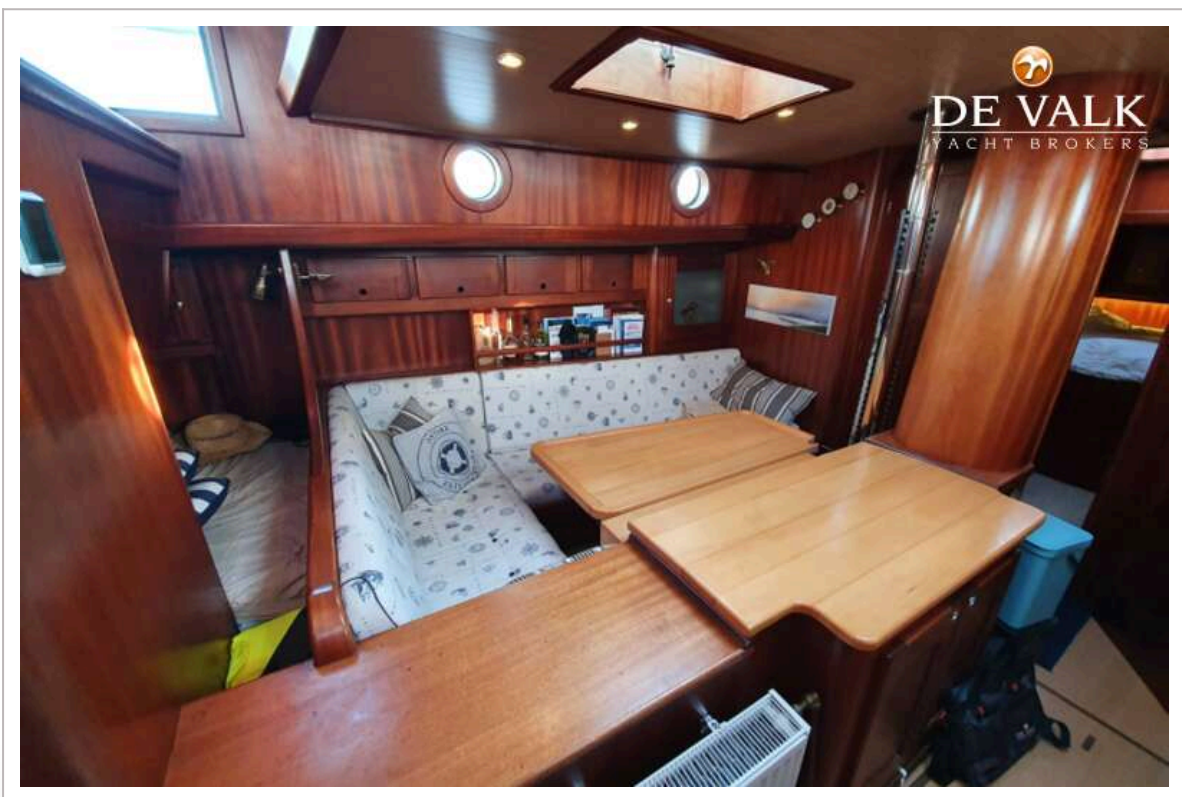
PUFFIN 42



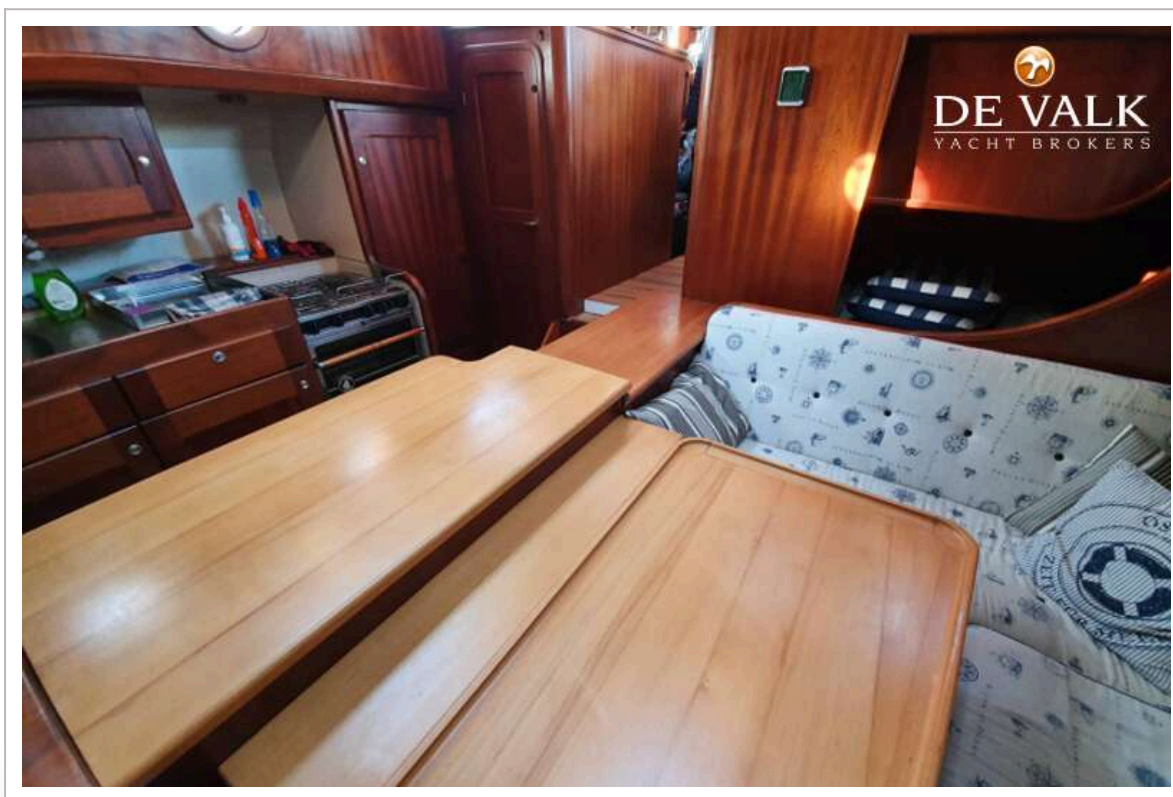
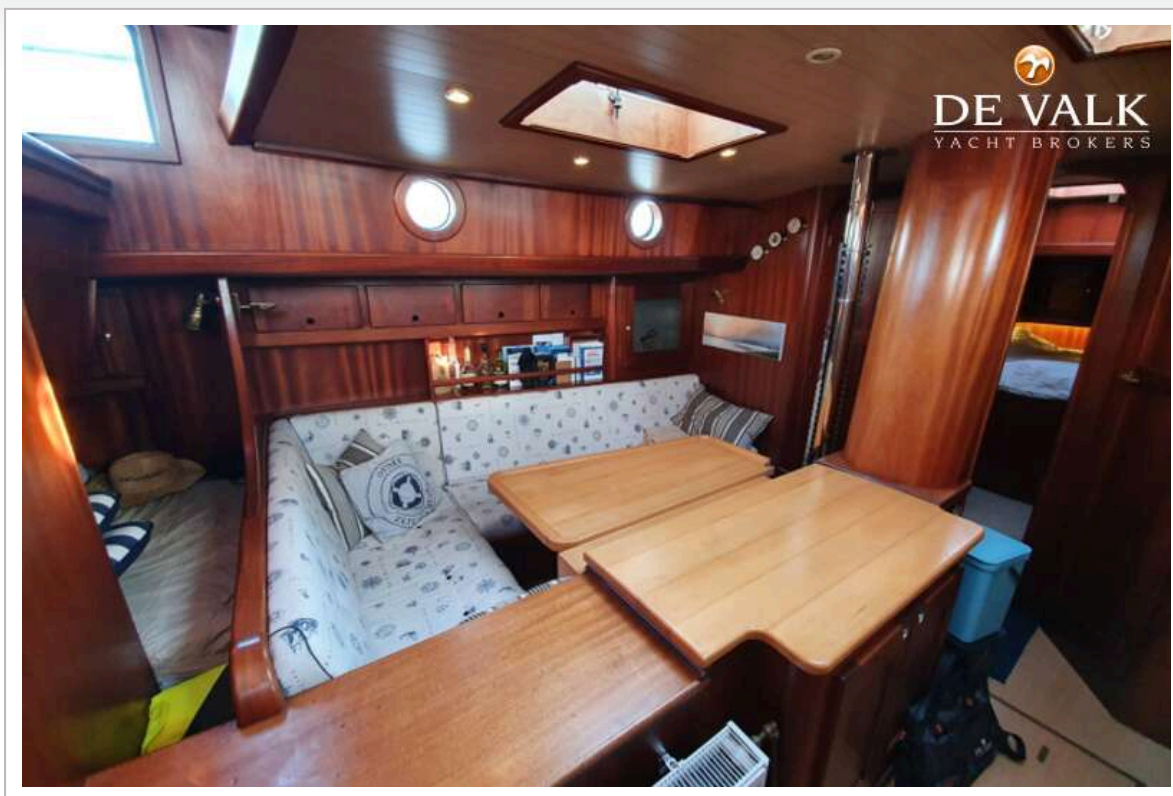
PUFFIN 42



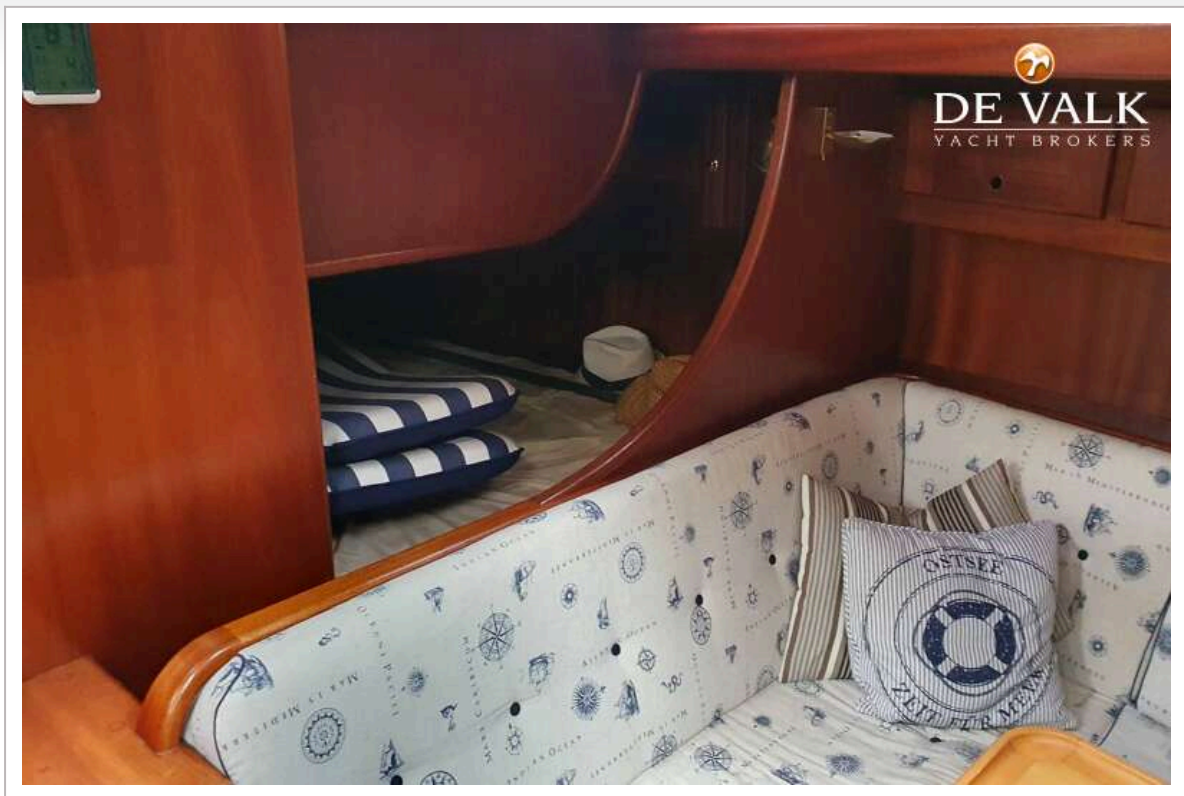
PUFFIN 42

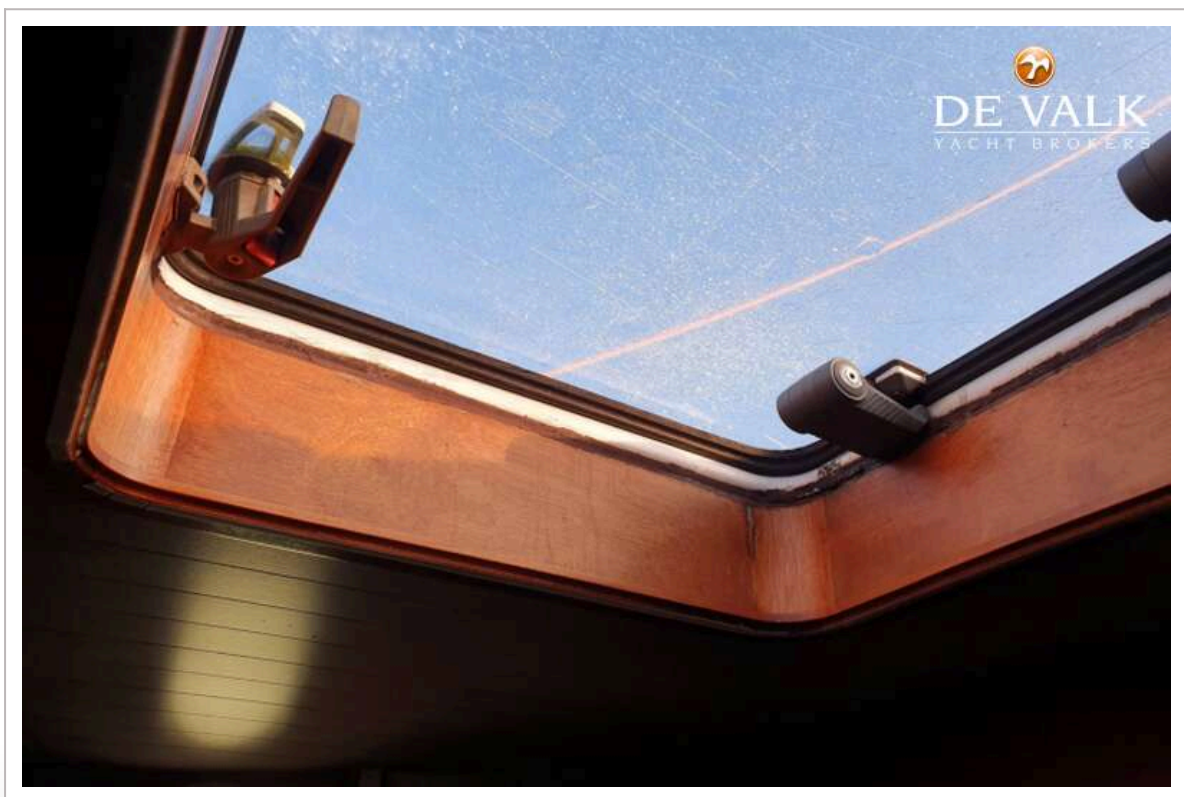
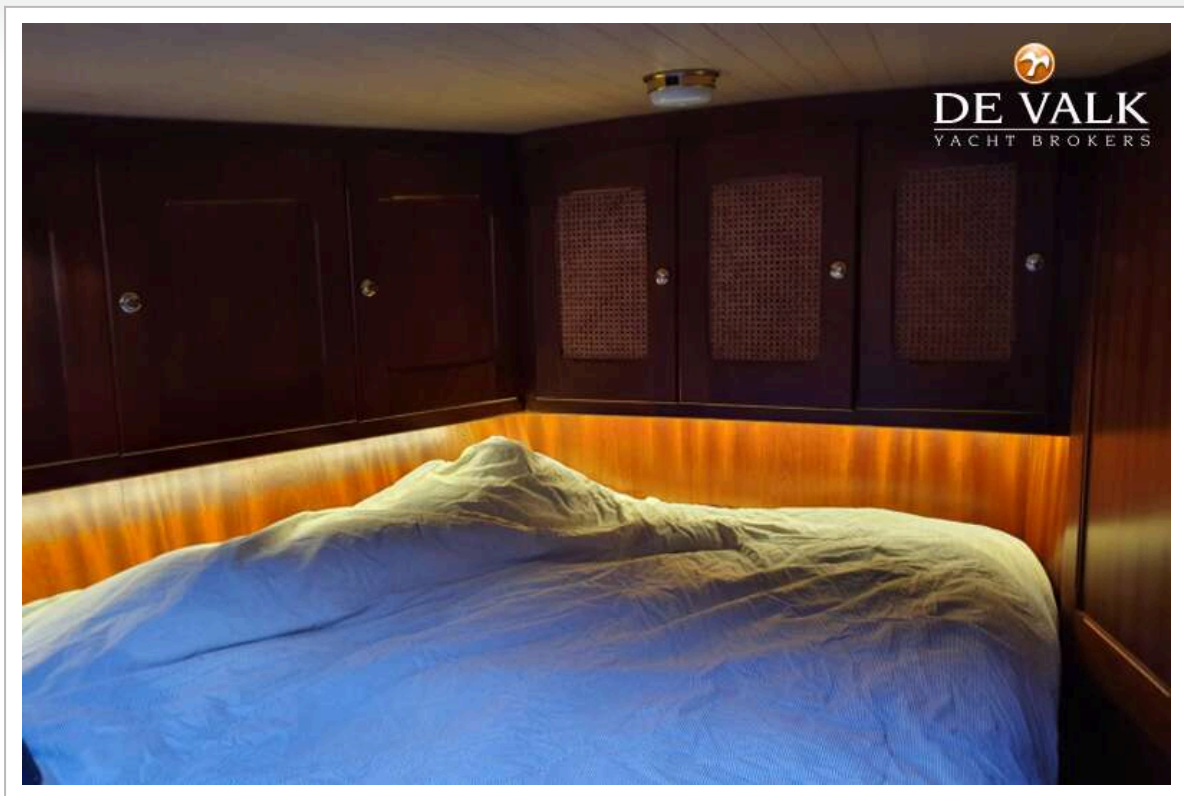


PUFFIN 42

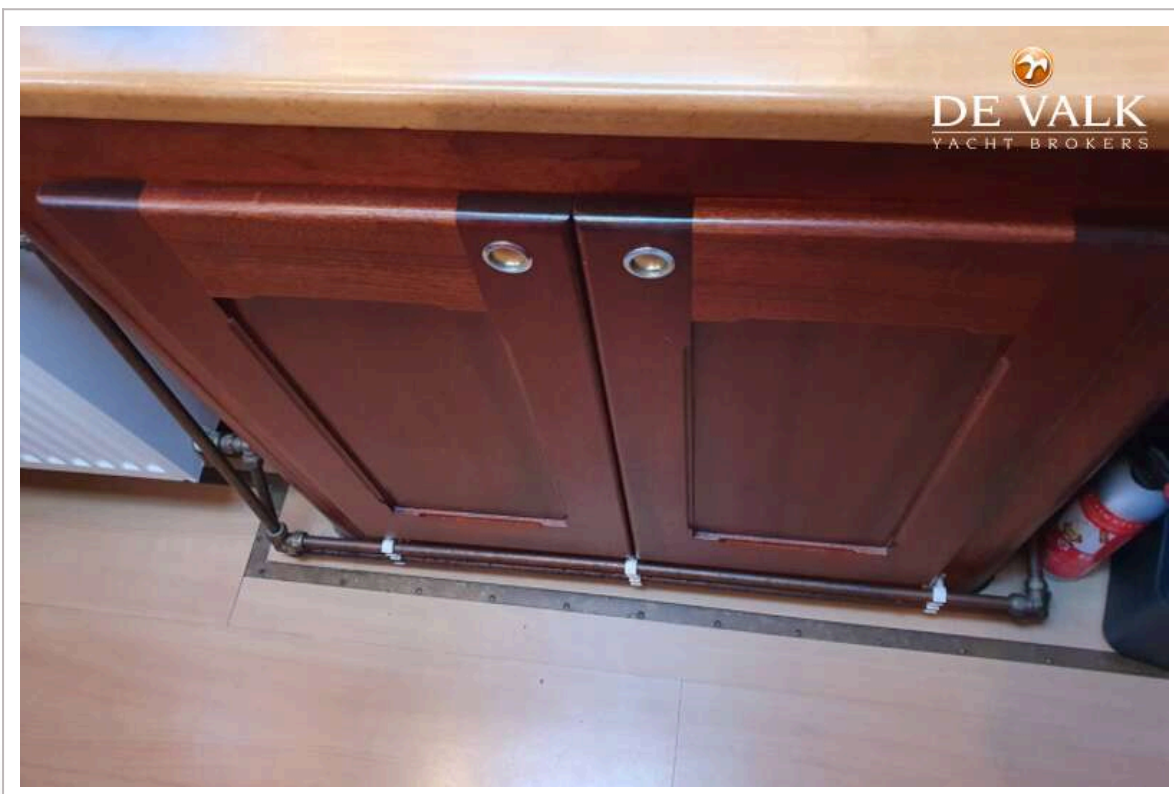


PUFFIN 42

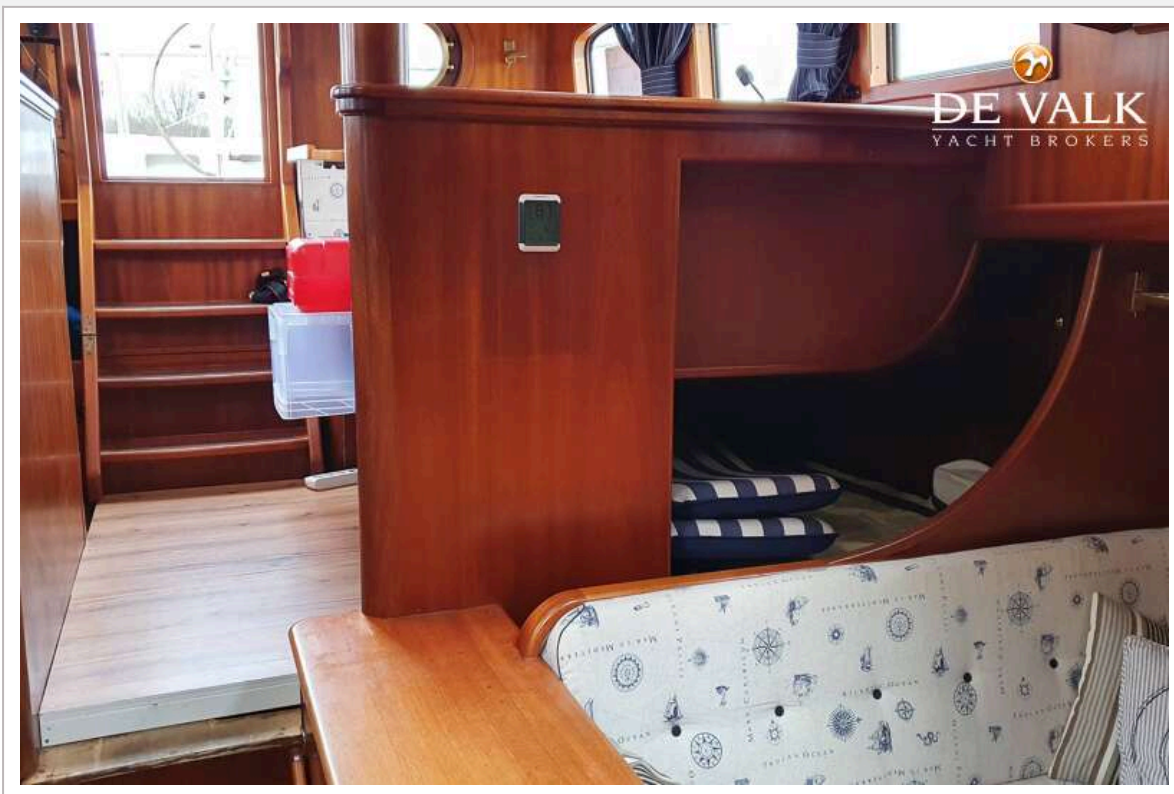




PUFFIN 42



PUFFIN 42



PUFFIN 42



PUFFIN 42



PUFFIN 42



PUFFIN 42

