



DE VALK
YACHT BROKERS



JEANNEAU SUN ODYSSEY 409



DE VALK
YACHT BROKERS

JEANNEAU SUN ODYSSEY 409

BROKER'S COMMENTS

From 2nd owner, the perfect boat for family touring and performance sailing. This Philippe Briand designed Sun Odyssey 409 is not only elegant, but also built for speed. A modern hull with a hard chine and excellent stability makes the Sun Odyssey 409 a pleasure to sail. She has all the basic equipment and ready for the summer season.

Reinoud Bicker Caarten

SPECIFICATIONS

Dimensions	12.34 x 3.99 x 2.10 (m)	Builder	Jeanneau
Built	2012	Cabins	3
Material	GRP	Berths	6
Engine(s)	1 x Yanmar 3JH5CE diesel	Hp/Kw	40.00 (hp), 29.44 (kw)
Asking price	sold (VAT)	Lying	contact sales office

CONTACT

Sales office	De Valk Portugal	Telephone	+351 308 812321
Address	Edifício Administrativo - Ponta da Areia 8500 - 345 Portimão PT	E-mail	portugal@devalk.nl

DISCLAIMER

These particulars are given in good faith as supplied but cannot be guaranteed.



GENERAL

Model	JEANNEAU SUN ODYSSEY 409
Type	sailing yacht
LOA (m)	12,34
Beam (m)	3,99
Draft (m)	2,10
Air draft (m)	21,00
Headroom (m)	1,95
Year built	2012
Builder	Jeanneau
Country	France
Designer	Briand
Displacement (t)	7,9
CE norm	A
Hull material	GRP
Hull colour	off-white
Keel type	fin keel
Superstructure material	GRP
Deck material	GRP
Superstructure deck finish	non-skid moulded in
Cockpit deck finish	non-skid moulded in Transom and seating in teak
Antifouling (year)	2021
Window frame	aluminium
Window material	polycarbonate
Deckhatch	4x
Portholes	aluminium 8x
Fuel tank (litre)	200L
Level indicator (fuel tank)	yes
Freshwater tank (litre)	1x 165L 1x100L
Blackwater tank (litre)	2x 80L
Wheel steering	cable steering Double



Outside helm position

Emergency tiller yes

ACCOMMODATION

Cabins 3

Berths 6

Interior teak

Layout 2 double cabins aft, 1 double cabin in bow, 2 heads, saloon with U shaped dinette and galley starboard, armchair and nav. station portside.

Floor teak and holly

Open cockpit yes

Headroom saloon (m) 1.92

Air-conditioning Electric fans in all cabins and saloon

Chart table yes

Aft Cabin 2x with double bed

Dinette to convert into berth yes

Galley yes

Countertop Duropal

Sink stainless steel Double

Cooker Gimbaled stainless steel oven/grill with 2 burners

Fridge Top load 180L

Freezer Single fridge box with freezer compartment

Hot water system

Water pressure system

Manual and/or foot pump yes

Owners cabin v-bed In bow

Bed length (m) 2m

Wardrobe hanging and shelves

Bathroom en suite

Toilet en suite

Toilet system manual



Wash basin	in the bathroom
Shower	en suite
Guest cabin 1	double bed Aft
Bed length (m)	2m
Wardrobe	hanging and shelves
Bathroom	shared
Toilet	shared
Toilet system	manual
Wash basin	in the bathroom
Shower	shared
Guest cabin 2	double bed Aft
Bed length (m)	2m
Wardrobe	hanging and shelves
Bathroom	shared

MACHINERY

No of engines	1
Make	Yanmar
Type	3JH5CE
HP	40
kW	29,44
Fuel	diesel
Year installed	2012
Engine hours	4500 estimate
Engine cooling system	seawater
Drive	sail-drive
Saildrive seal	new 2021
Engine controls	bowden cable
Exhaust	watercooled
Propeller blades	3
Propeller shaft material	stainless steel



Shaft lubrication	water
Manual bilge pump	yes
Electric bilge pump	yes
Electrical installation	12/220v
Start battery	95Ah
Service battery	3x 95Ah
Battery monitor	yes
Battery charger	80Ah 12v alternator
Diode battery combiners	yes
Shorepower	

NAVIGATION

Compass	yes
Depth sounder/log	Raymarine
Windset	Raymarine
VHF	Raymarine
Autopilot	Raymarine
Radar	Raymarine Quantum
Plotter	Raymarine, needs service
PC connection	yes
Navigation lights	yes

EQUIPMENT

Sprayhood	Due for replacement
Bimini	Due for replacement
Cockpit table	yes
Bathing platform	yes
Boarding ladder	aluminum
Gangway	yes
Deck shower	yes
Anchor	Delta 16kg



Anchor chain	8mm galvanized steel 50m
Anchor 2	Danforth 20kg
Anchor chain	8mm galvanized steel 20m
Windlass	electrical Quick 1000w with handheld control
Pushpit	yes
Pulpit	yes
Fenders	yes
Mooring lines	yes
Radio	Fusion soundsystem
Cockpit speakers	yes
Speakers in salon	yes
Fire extinguisher	3x one in each cabin

RIGGING

Rigging	sloop
Standing rigging	wire Stainless steel
Brand mast	Sparcraft
Material mast	aluminium
Spreaders	yes
Keel stepped mast	yes
Mainsail cover	Lazybag with lazy jacks
Battcars	yes
Fully battened mainsail	2 reefs single line
Jib	100% on manual furler with UV strip
Reefing System	quick-one-line-reefing
Primary sheet winch	2x selftailing
Halyard winches	2x selftailing in cockpit



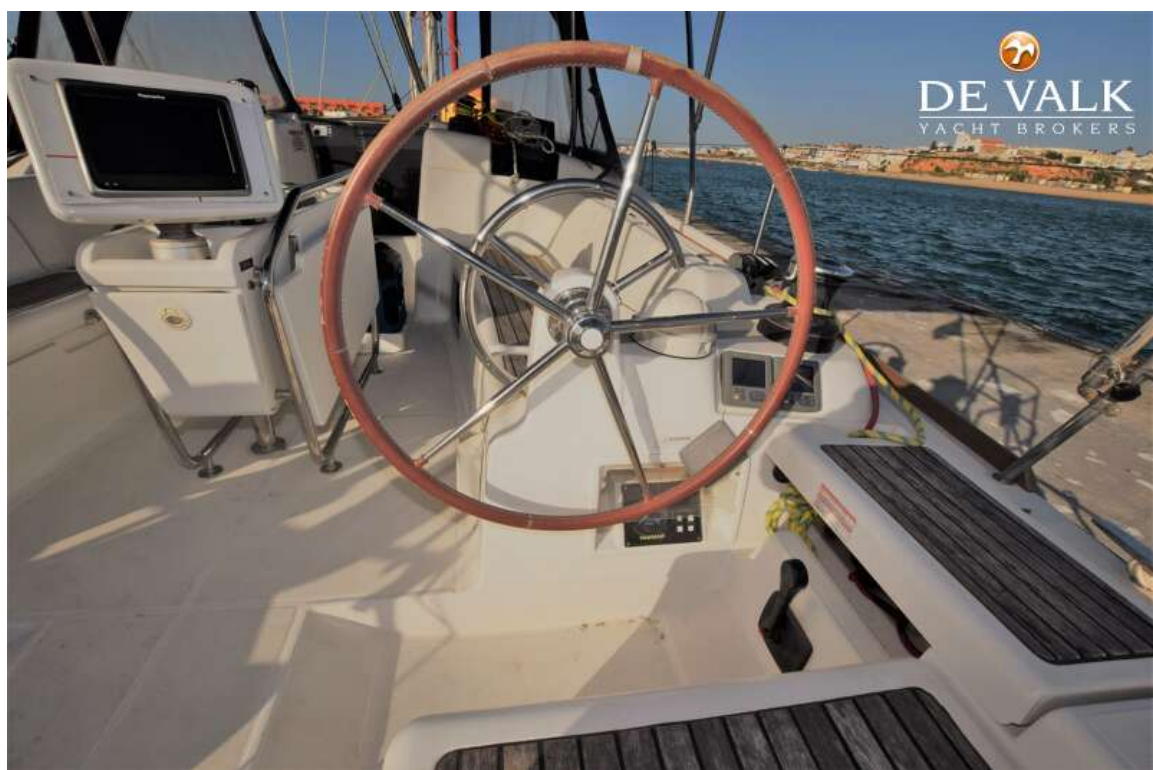
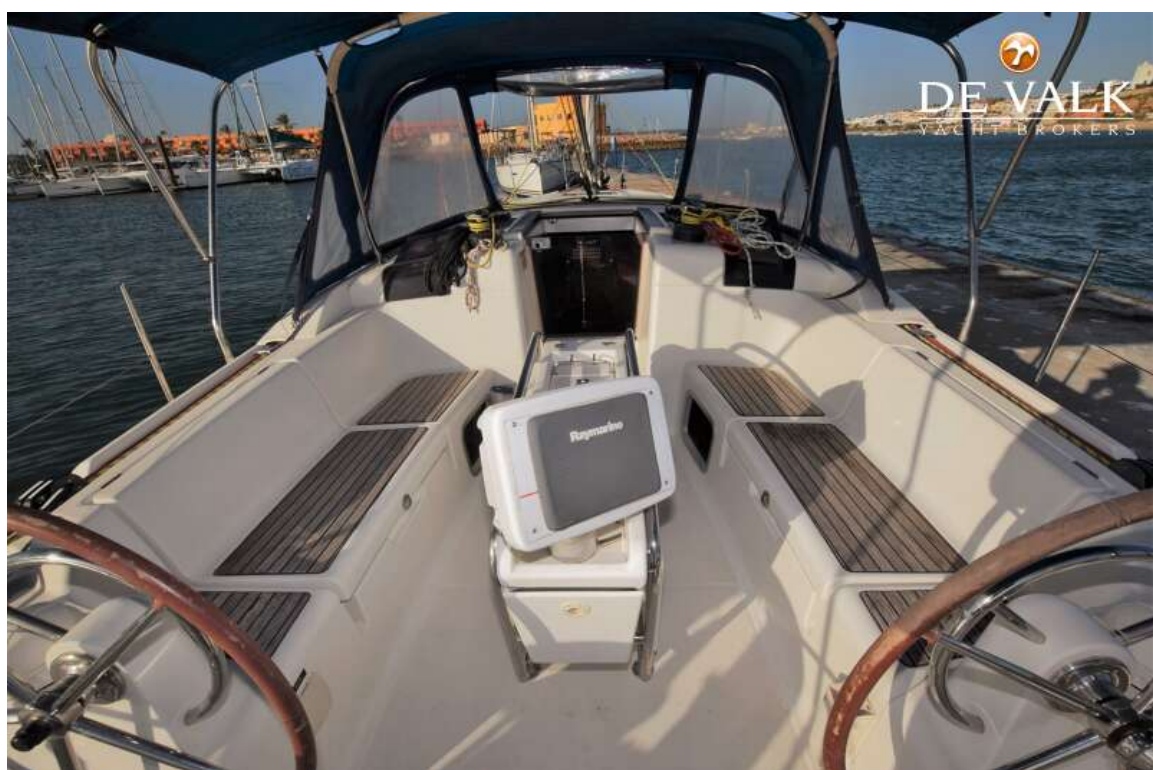
JEANNEAU SUN ODYSSEY 409



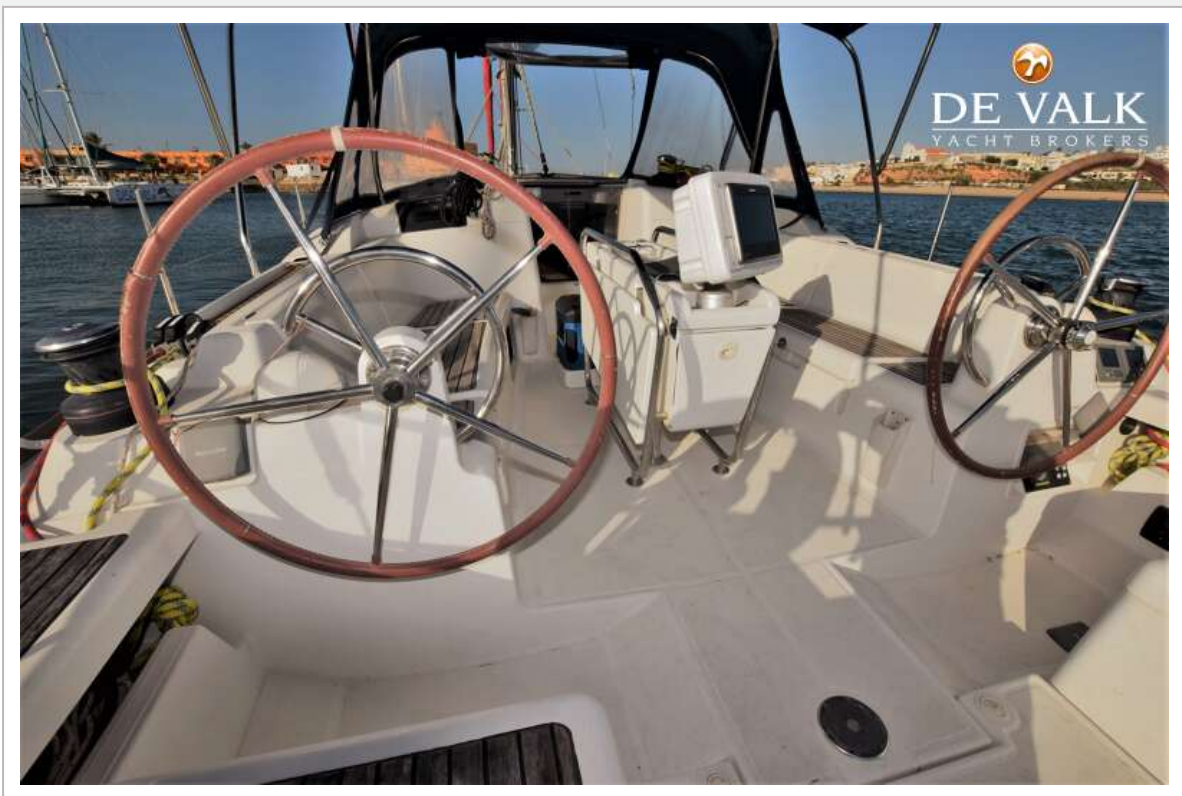
JEANNEAU SUN ODYSSEY 409



JEANNEAU SUN ODYSSEY 409



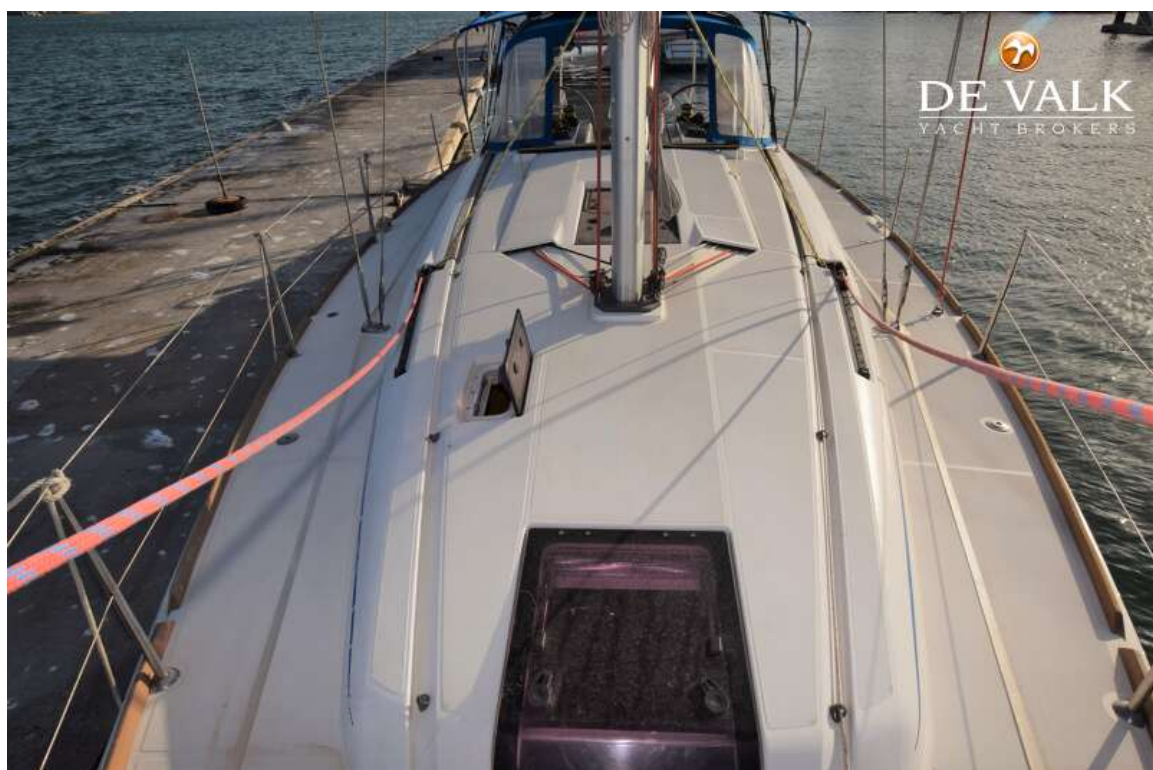
JEANNEAU SUN ODYSSEY 409



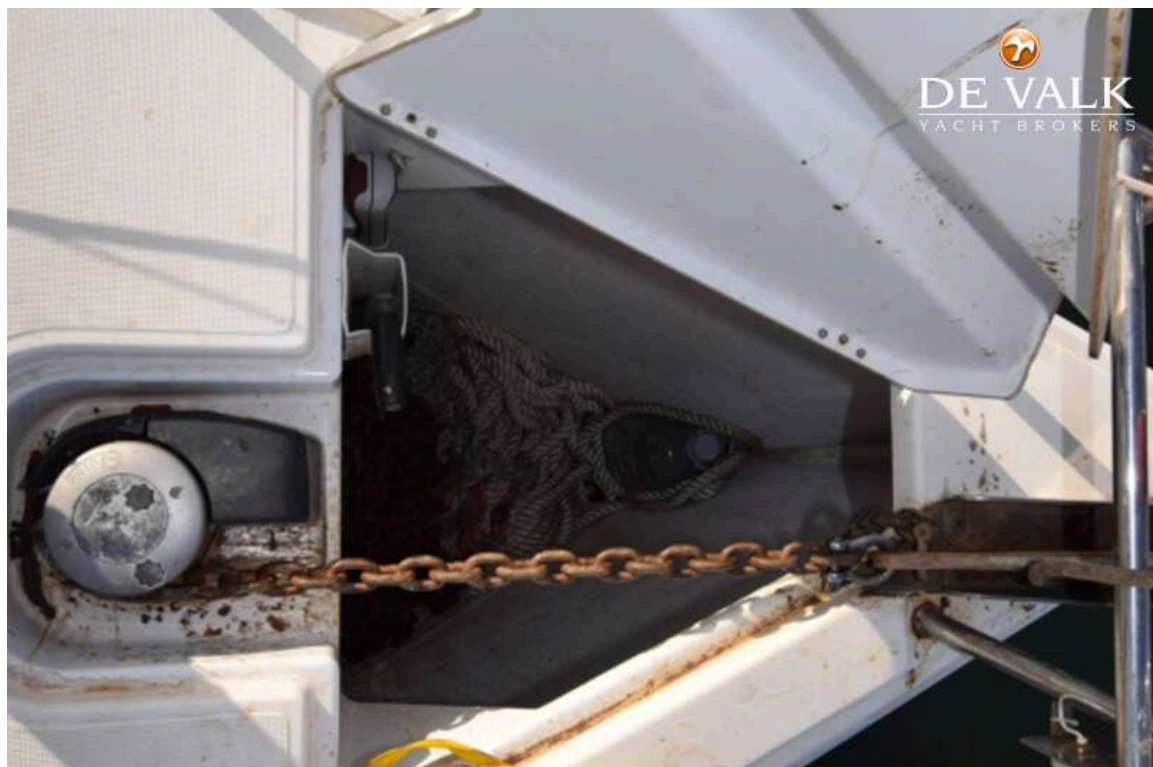
JEANNEAU SUN ODYSSEY 409



JEANNEAU SUN ODYSSEY 409



JEANNEAU SUN ODYSSEY 409



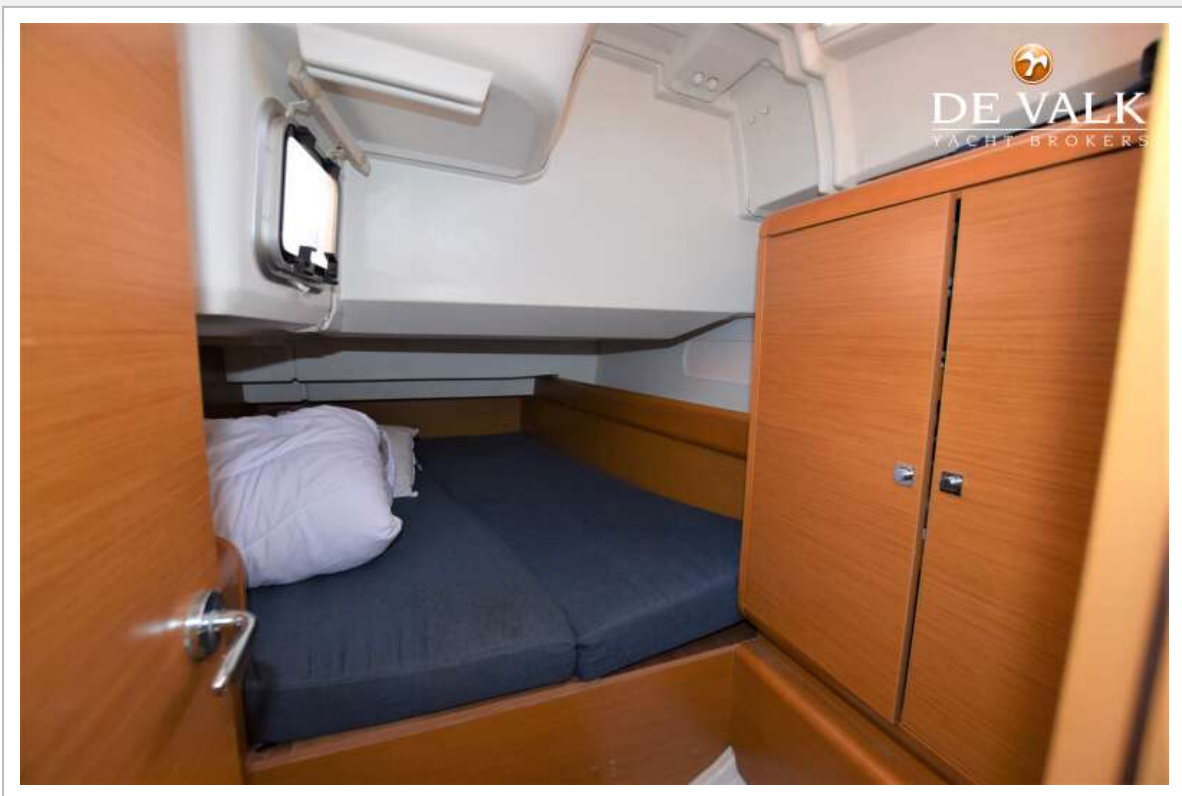
JEANNEAU SUN ODYSSEY 409



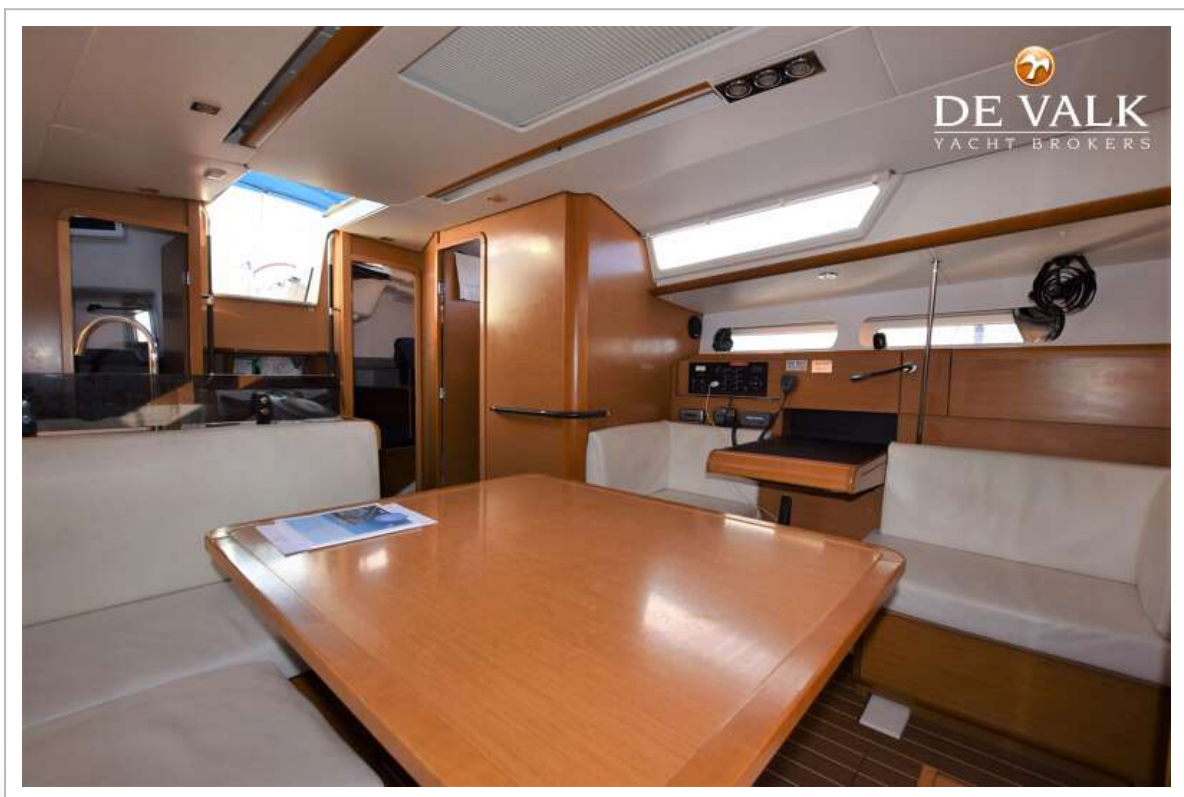
JEANNEAU SUN ODYSSEY 409



JEANNEAU SUN ODYSSEY 409



JEANNEAU SUN ODYSSEY 409



JEANNEAU SUN ODYSSEY 409





