



DJS HIGH SPEED TENDER 1200

DJS HIGH SPEED TENDER 1200

BROKER'S COMMENTS

DJS HIGH SPEED TENDER 1200, "Kluut". Build in a series of three in 2010 at N. Dijkstra Jachtservice Harlingen. Helmposition with captainseat and 12 seats. Two Yanmar diesel engines from by 2019 with waterjets. An ideal motor yacht for use as Watertaxi, crewtender etc. Viewing possible by appointment.

Arne Doodeman

SPECIFICATIONS

Dimensions	12.00 x 4.30 x 0.71 (m)	Builder	N. Dijkstra Jachtservice Harlingen
Built	2010	Cabins	
Material	Aluminium	Berths	
Engine(s)	2 x Yanmar 6LY2A-STP diesel	Hp/Kw	2 x 439.00 (hp), 323.00 (kw)
Asking price	sold (VAT)	Lying	contact Sneek

CONTACT

Sales office	De Valk Sneek	Telephone	+31 (0)515 42 80 30
Address	Zwolsmanweg 7 8606 KC Sneek NL	E-mail	sneek@devalk.nl

DISCLAIMER

These particulars are given in good faith as supplied but cannot be guaranteed.



DJS HIGH SPEED TENDER 1200

GENERAL

Model	DJS HIGH SPEED TENDER 1200
Type	motor yacht
LOA (m)	12,00
Beam (m)	4,30
Draft (m)	0,71
Year built	2010
Builder	N. Dijkstra Jachtservice Harlingen
Country	The Netherlands
Hull material	aluminium
Hull shape	deep-V
Superstructure material	aluminium
Rubbing strake	rubber
Deck material	aluminium
Deck finish	non-skid paint
Window frame	aluminium
Window material	tempered glass
Fuel tank (litre)	aluminium 1200
Level indicator (fuel tank)	VDO
Wheel steering	hydraulic
Inside helm position	yes

ACCOMMODATION

Cabins	NULL
Berths	NULL
Saloon	12 seats and captain seat
Heating	diesel ducted hot air Webasto
Heating 2	Small electric heating
Opening door to aft deck	yes



DJS HIGH SPEED TENDER 1200

MACHINERY

No of engines	2
Make	Yanmar
Type	6LY2A-STP
HP	439
kW	323
Fuel	diesel
Year installed	2019
Maximum speed (kn)	34
Cruising speed (kn)	25
Engine hours	778
Engine cooling system	freshwater heat exchanger
Drive	jet-drive
Engine controls	bowden cable
Exhaust	watercooled
Electric bilge pump	yes
Start battery	2x red top battery
Service battery	1x
Battery monitor	Victron
Battery charger	Vitron Centaur battery charger 12/30
Inverter	Mastervolt AC master 12/300
Shorepower	with cable
Insulation transformer	Mastervolt Mas GI 3.5

NAVIGATION

VHF	1x Raymarine (2019) 1 x Raymarine (2020)
Rudder angle indicator	VDO
Radar	Furuno and Raymarine Quatum
Plotter/GPS	yes
Radar/GPS/plotter	Raymarine (12-2020)
AIS transponder	Raymarine AIS700 class B



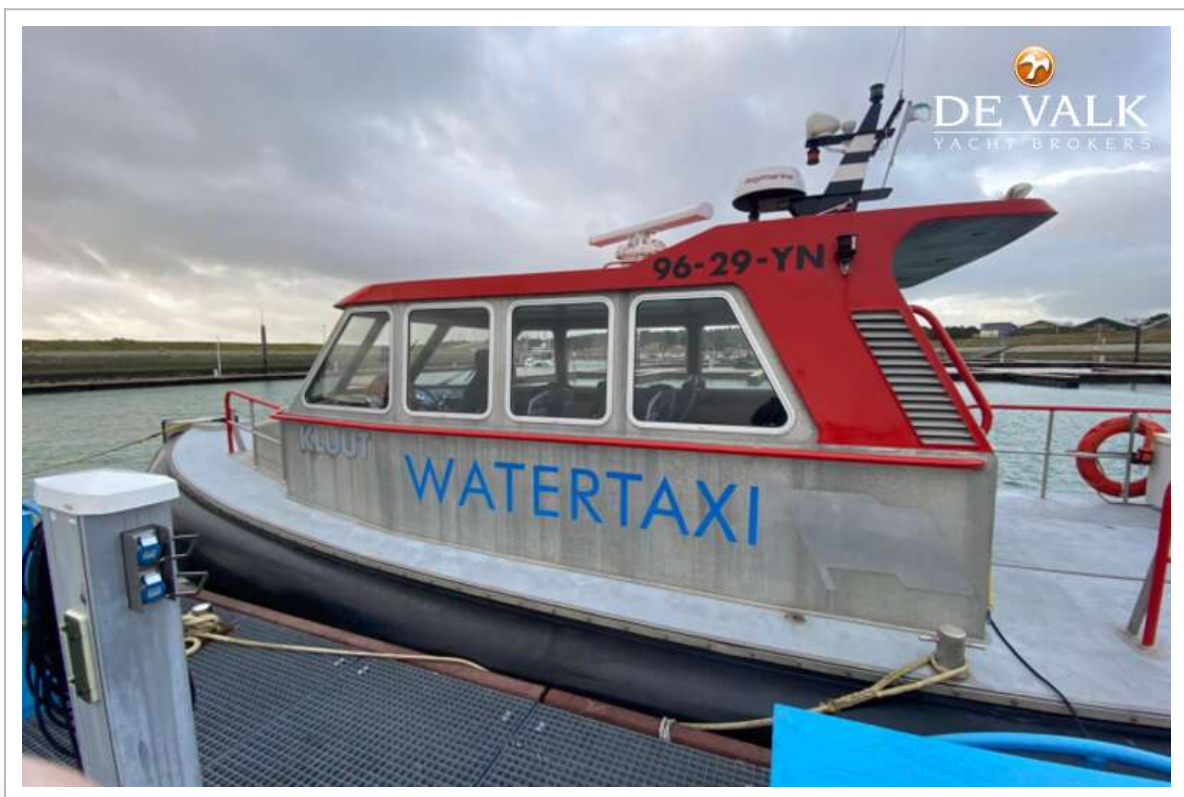
Navigation lights	yes
Searchlight	yes

EQUIPMENT

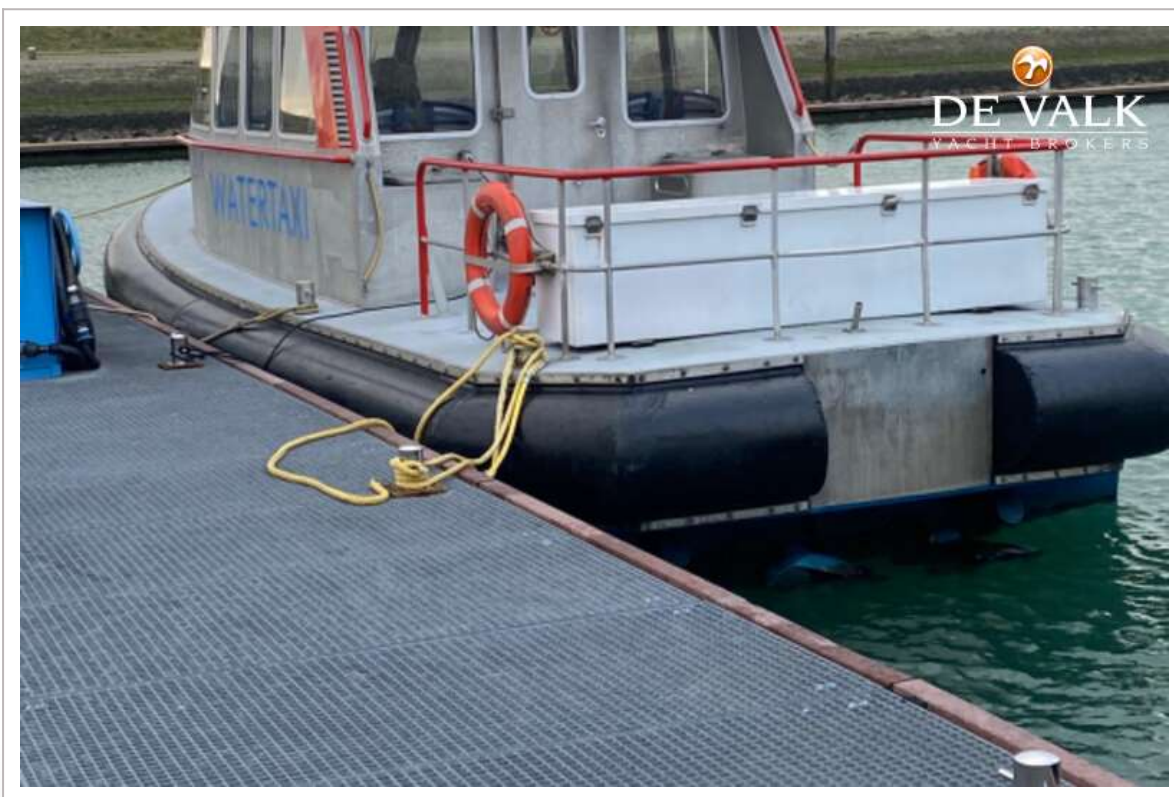
Grab rail (superstructure)	aluminium
Lifejackets	Under every seat
Lifebuoy	2x
Wiper	3x
Horn	yes
Mooring lines	yes
Fire extinguisher	yes



DJS HIGH SPEED TENDER 1200



DJS HIGH SPEED TENDER 1200



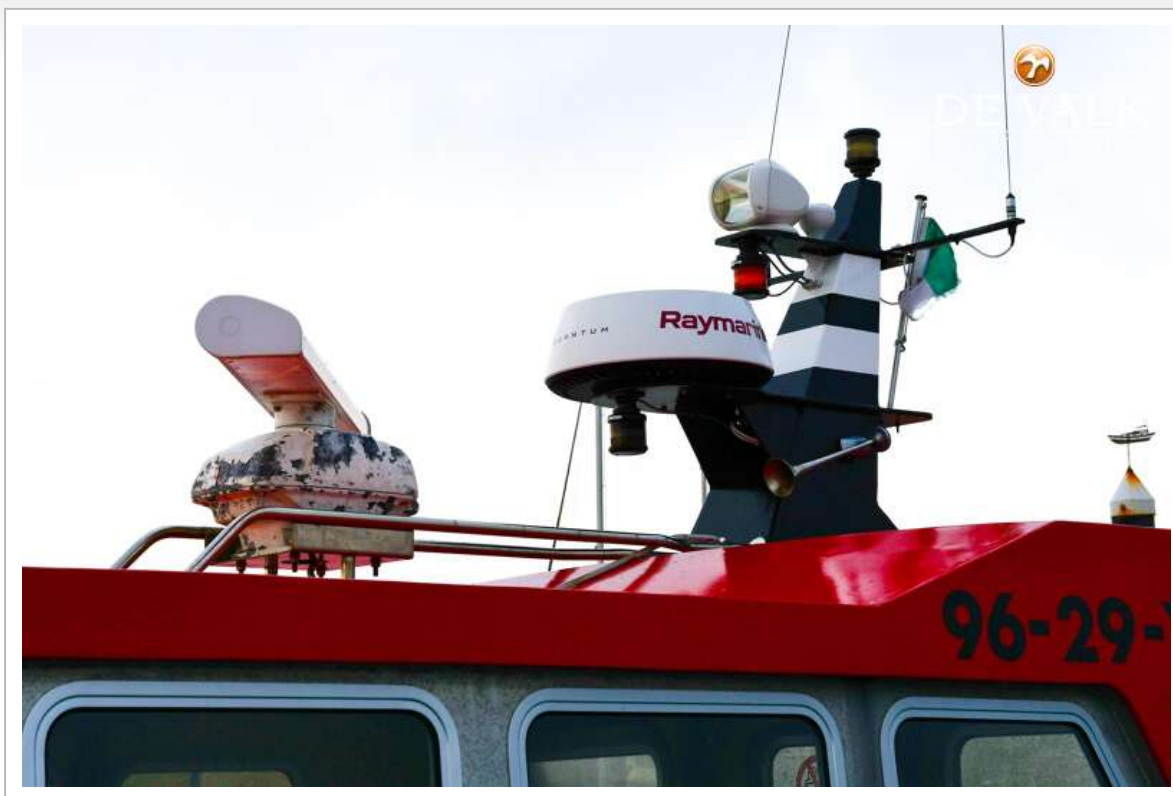
DJS HIGH SPEED TENDER 1200



DJS HIGH SPEED TENDER 1200



DJS HIGH SPEED TENDER 1200



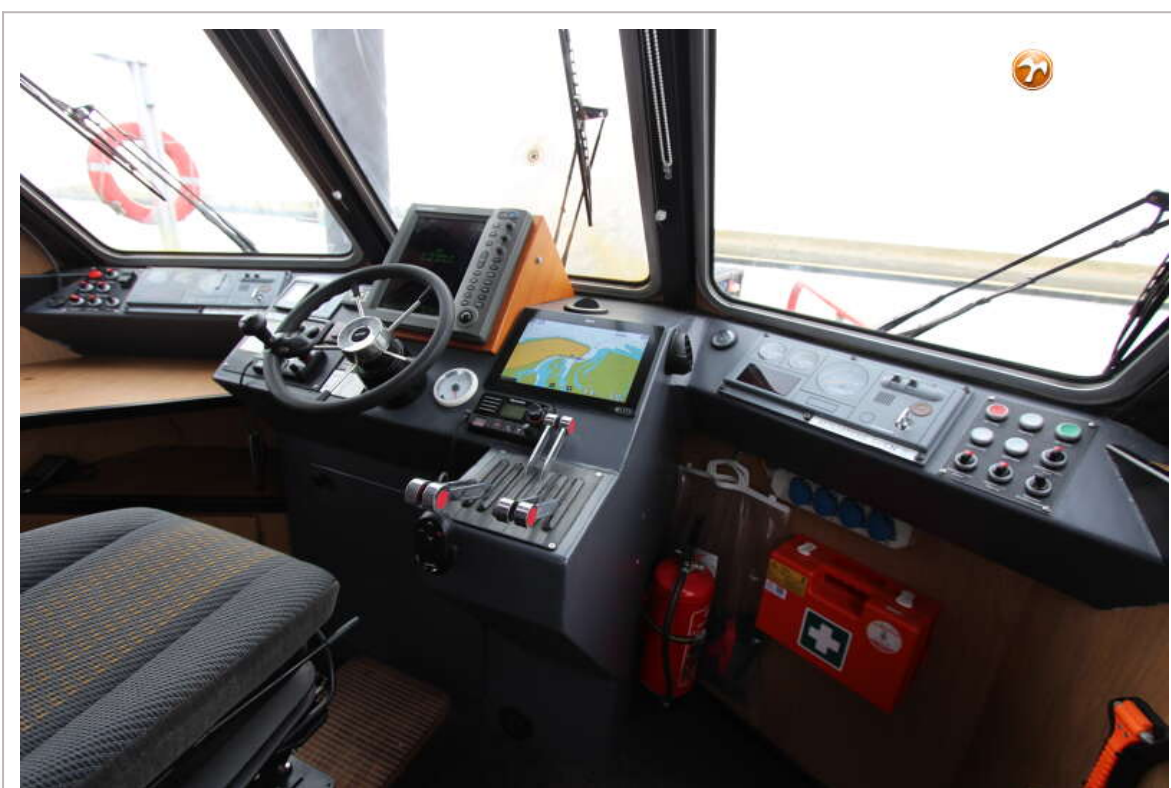
DJS HIGH SPEED TENDER 1200



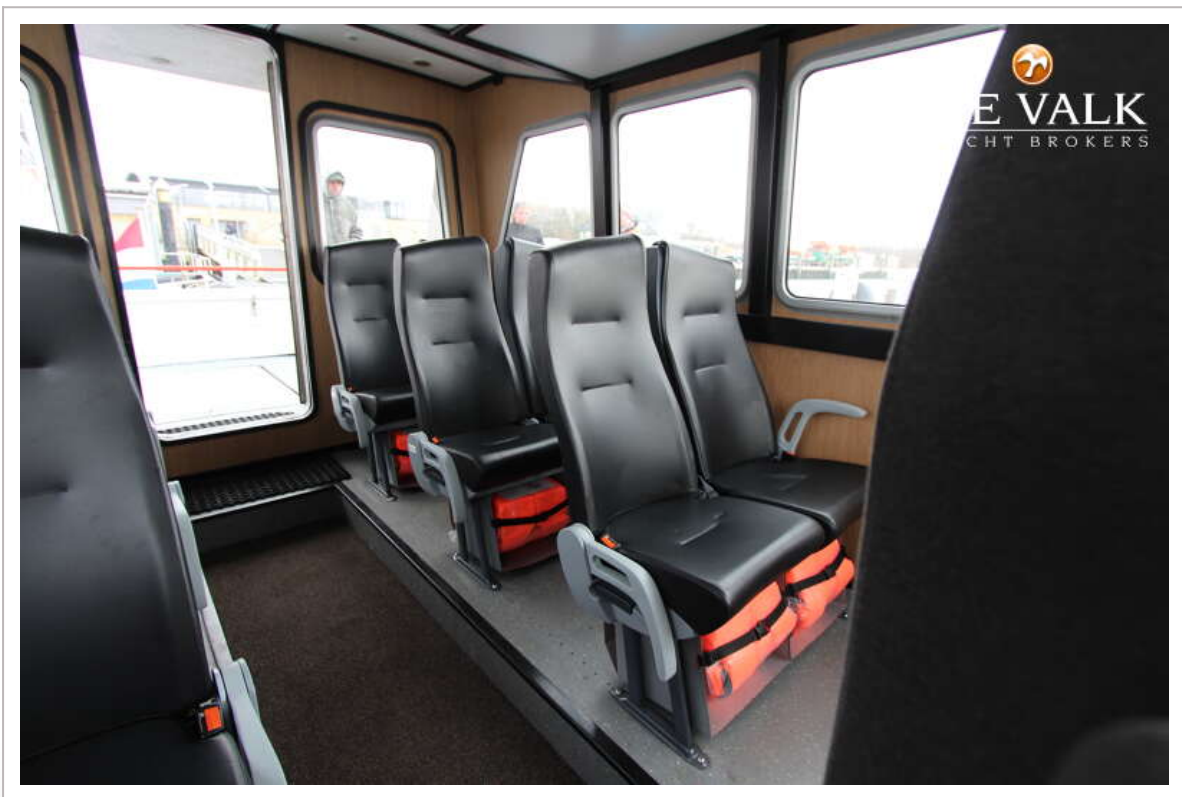
DJS HIGH SPEED TENDER 1200



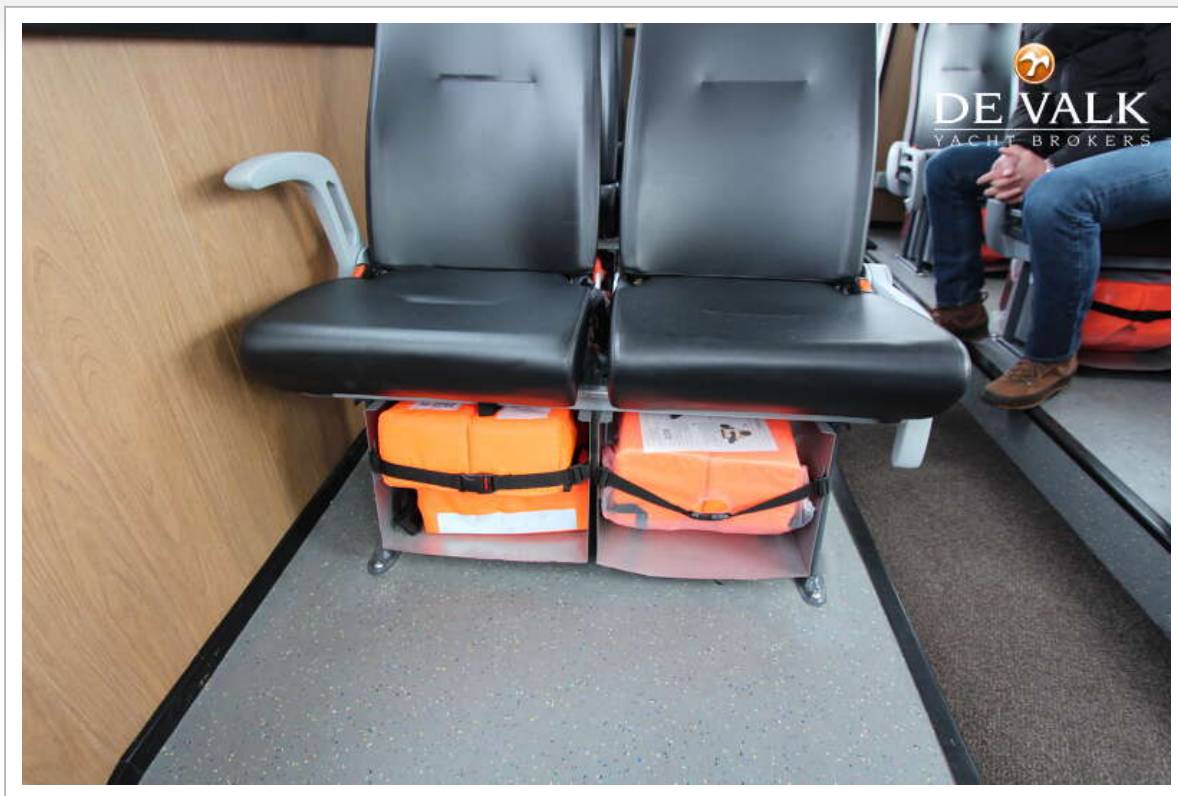
DJS HIGH SPEED TENDER 1200



DJS HIGH SPEED TENDER 1200



DJS HIGH SPEED TENDER 1200

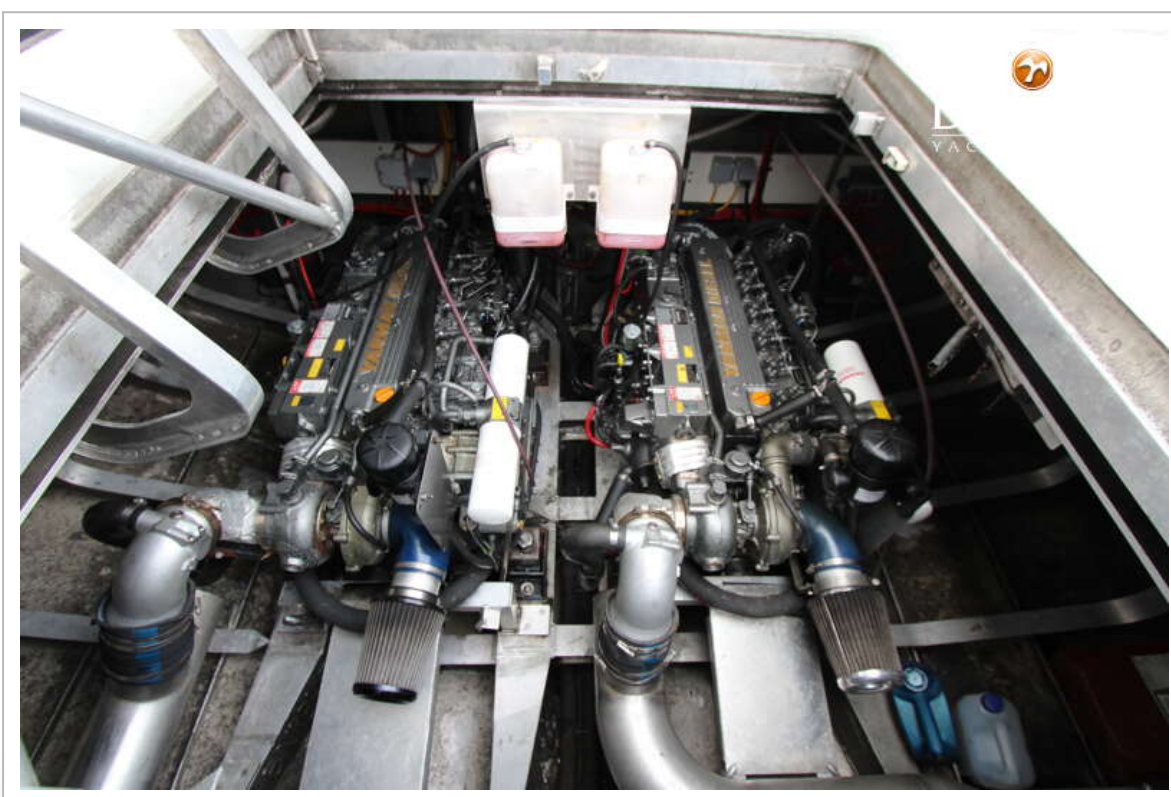
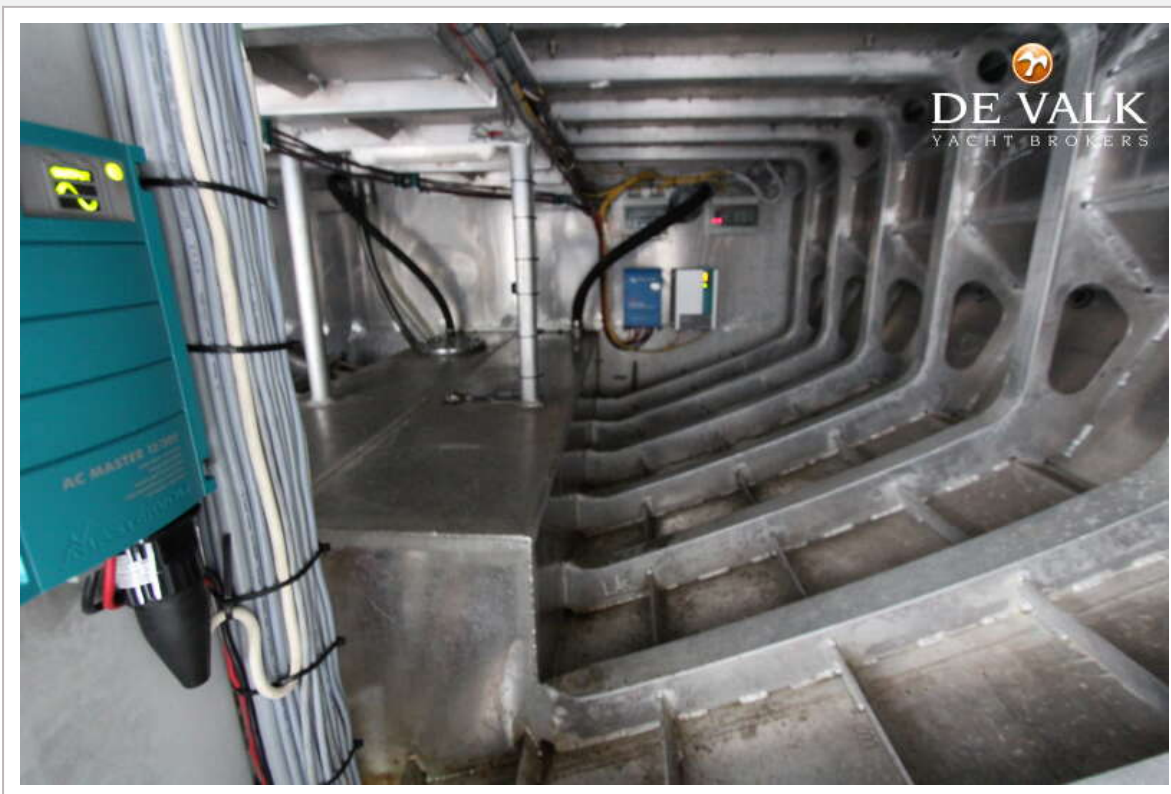


DJS HIGH SPEED TENDER 1200





DJS HIGH SPEED TENDER 1200



DJS HIGH SPEED TENDER 1200



DJS HIGH SPEED TENDER 1200

