



THIS YACHT WILL BE AUCTIONED

RIVA 50 DIABLA



RIVA 50 DIABLE

BROKER'S COMMENTS

Now for sale, original RIVA 50 DIABLE. built in 1988 by Cantieri RIVA S.p.A., Sarnico-Italy. Fast, seagoing motoryacht. Attractive motoryacht with twin GM 535 hp diesel engines. Minimum air draft 3,30 m. The Riva 50 Diable will be auctioned online at Bright Auctions. Bids can only be placed online at Bright Auctions. All information about the auction is available on the website <https://bit.ly/3RStgsR>

Mark Hesselmans

SPECIFICATIONS

Dimensions	15.20 x 4.19 x 1.30 (m)	Builder	Riva
Built	1988	Cabins	2
Material	GRP	Berths	4
Engine(s)	2 x General Motors 6V92TA diesel	Hp/Kw	2 x 535.00 (hp), 393.23 (kw)
Asking price	sold (VAT)	Lying	at sales office

CONTACT

Sales office	De Valk Loosdrecht B.V.	Telephone	+31 (0)35 582 90 30
Address	't Breukeleveense Meentje 6 1231LM Loosdrecht / Wijdmeren NL	E-mail	loosdrecht@devalk.nl

DISCLAIMER

These particulars are given in good faith as supplied but cannot be guaranteed.



GENERAL

Model	RIVA 50 DIABLE
Type	motor yacht
LOA (m)	15,20
Beam (m)	4,19
Draft (m)	1,30
Air draft (m)	3,30
Headroom (m)	1,95
Year built	1988
Builder	Riva
Country	Italy
Displacement (t)	17
CE norm	NA
Hull material	GRP
Hull colour	off-white
Hull shape	yes
Superstructure material	GRP
Rubbing strake	stainless steel
Deck material	GRP
Deck finish	non-skid moulded in
Superstructure deck finish	non-skid moulded in
Cockpit deck finish	non-skid moulded in
Antifouling (year)	yes
Window frame	stainless steel
Window material	glass
Deckhatch	yes
Portholes	stainless steel
Radar arch	yes
Fuel tank (litre)	1600
Level indicator (fuel tank)	yes
Freshwater tank (litre)	600



Greywater tank (litre)	yes
Outside helm position	hydraulic
More info on hull	Needs attention

ACCOMMODATION

Cabins	2
Berths	4
Interior	yes
Floor	carpet
Open cockpit	yes
Saloon	yes
Headroom saloon (m)	1,90 +/-
Sliding door to cockpit	yes
Galley	yes
Countertop	stainless steel
Sink	stainless steel
Cooker	electric
Fridge	yes
Hot water system	yes
Water pressure system	electrical
Owners cabin	double bed
Wardrobe	hanging/drawers/shelves
Bathroom	en suite
Toilet	en suite
Toilet system	electric
Wash basin	in the bathroom
Shower	en suite
Guest cabin 1	bunk bed
Wardrobe	yes
Bathroom	en suite
Toilet	en suite



RIVA 50 DIABLE

Toilet system	electric
Wash basin	in the bathroom
Shower	en suite

MACHINERY

No of engines	2
Make	General Motors
Type	6V92TA
HP	535
kW	393.23
Fuel	diesel
Year installed	1988
Engine hours	875
Engine cooling system	freshwater heat exchanger
Drive	shaft
Engine controls	yes
Gearbox	hydraulic
Propeller type	fixed
Electric bilge pump	yes
Generator	Defect
Batteries	yes
Start battery	yes
Service battery	yes
Battery charger	yes
Shorepower	with cable
Trimtabs	yes

NAVIGATION

Compass	yes
Log	VDO
VHF	Shipmate RS 8110



Autopilot	Robertson AP 200
GPS	Raymarine RN 300
Navigation lights	yes
Searchlight	yes

EQUIPMENT

Fixed windscreen	yes
Cockpit cover	yes
Cockpit cushions	yes
Cockpit table	yes
Bathing platform	yes
Anchor	yes
Anchor chain	yes
Windlass	yes
Davits	yes
Davits controls	yes
Sea railing	yes
Fenders	yes
Mooring lines	yes





BROKERAGE | CHARTER | BERTHS | FINANCE | INSURANCE | YACHT MANAGEMENT



DE VALK
YACHT BROKERS



**This yacht will be auctioned,
for further details please visit www.devalk.nl**

**Dit schip zal worden geveild,
voor meer informatie gaat u naar www.devalk.nl**

**Dieses Schiff wird versteigert,
für weitere informationen besuchen Sie www.devalk.nl**

WWW.DEVALK.NL



DE VALK
YACHT BROKERS



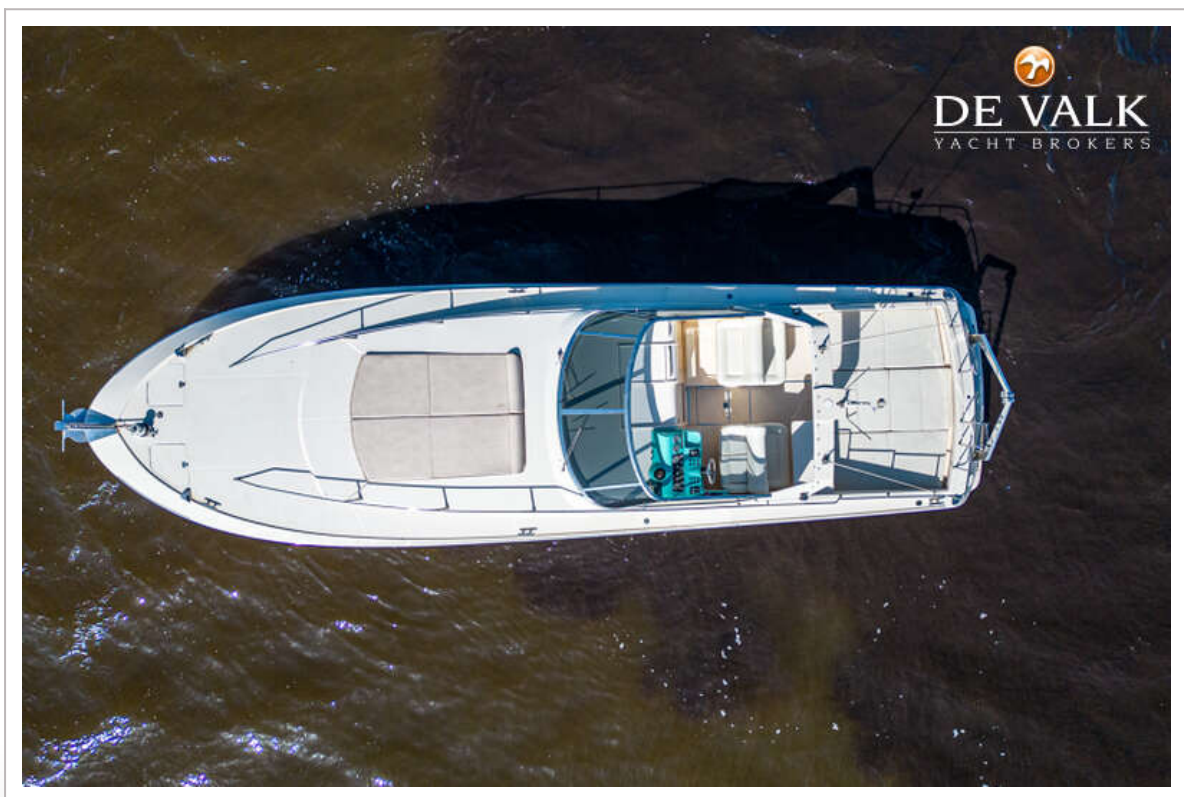
RIVA 50 DIABLO



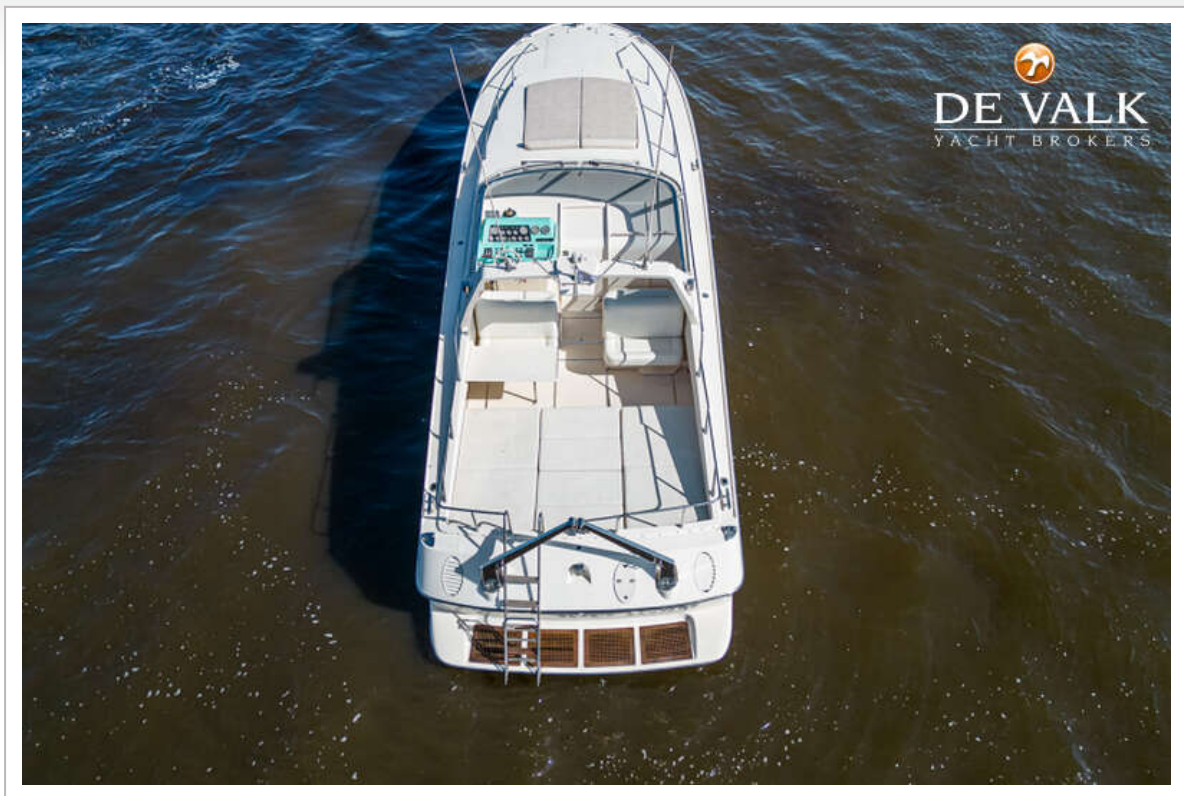
RIVA 50 DIABLO



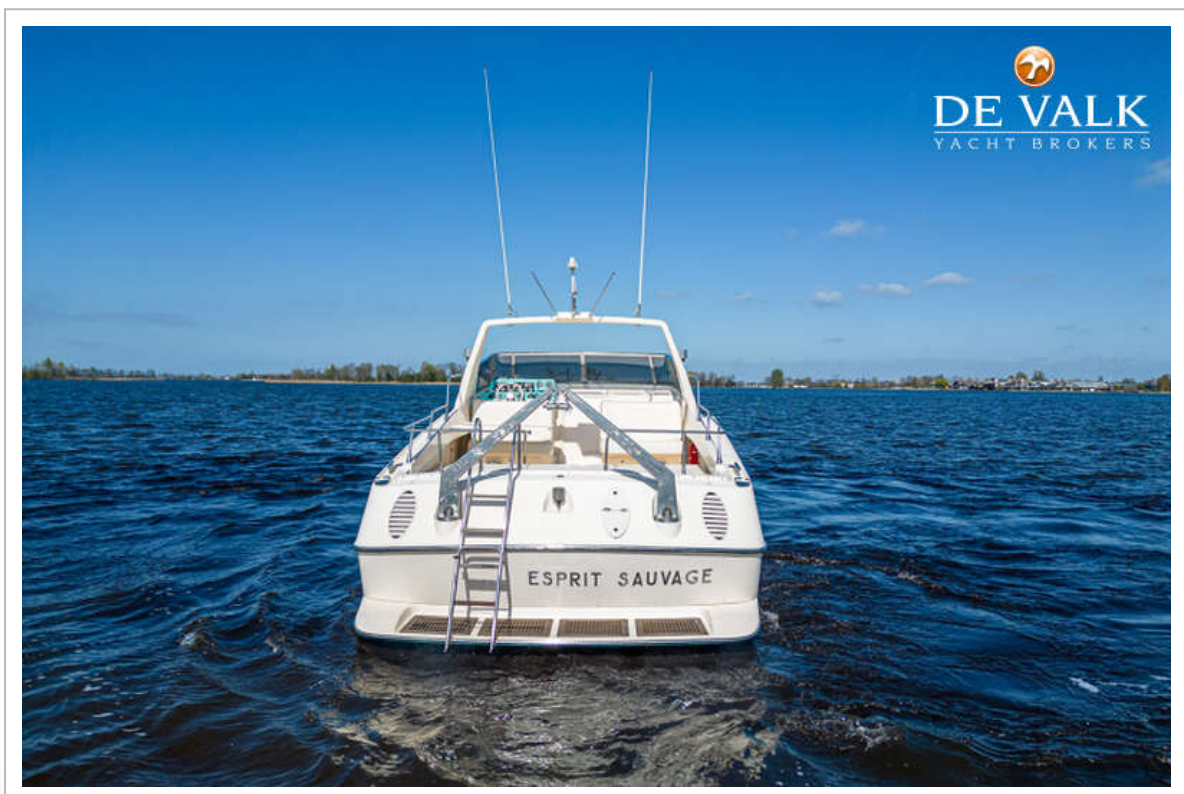
RIVA 50 DIABLO



RIVA 50 DIABLO



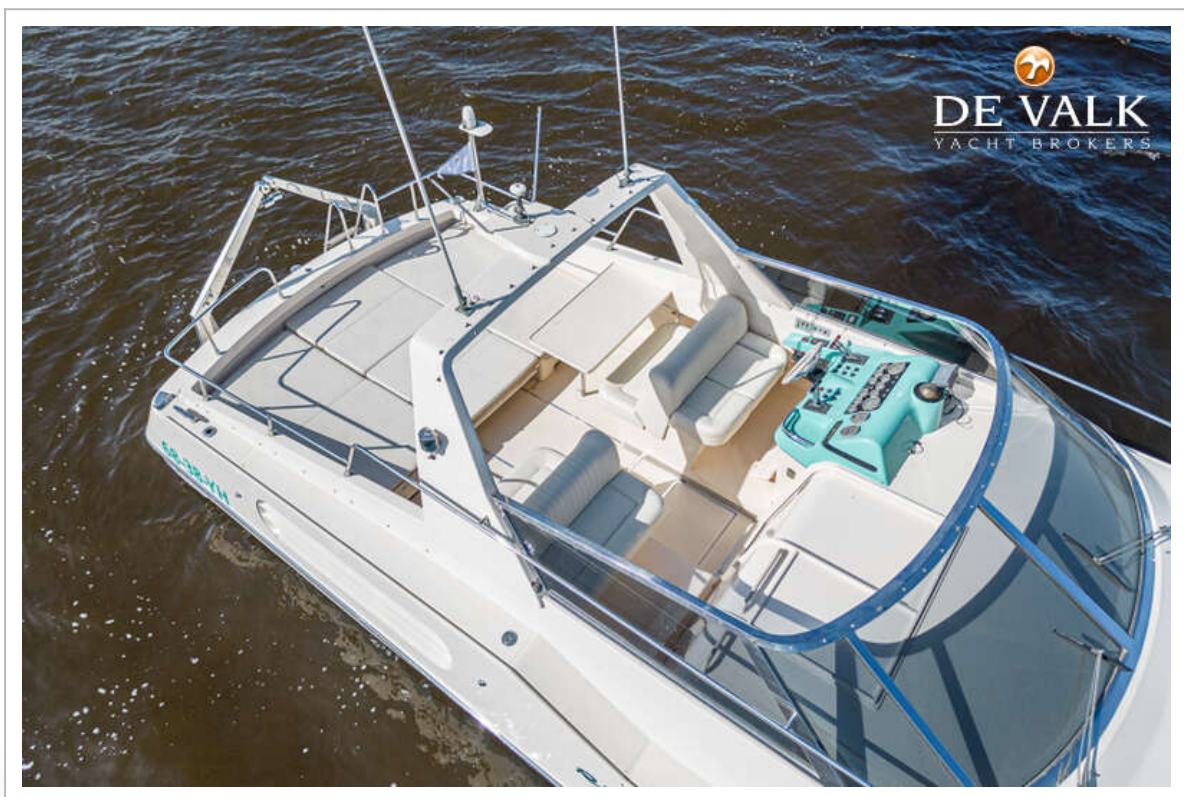
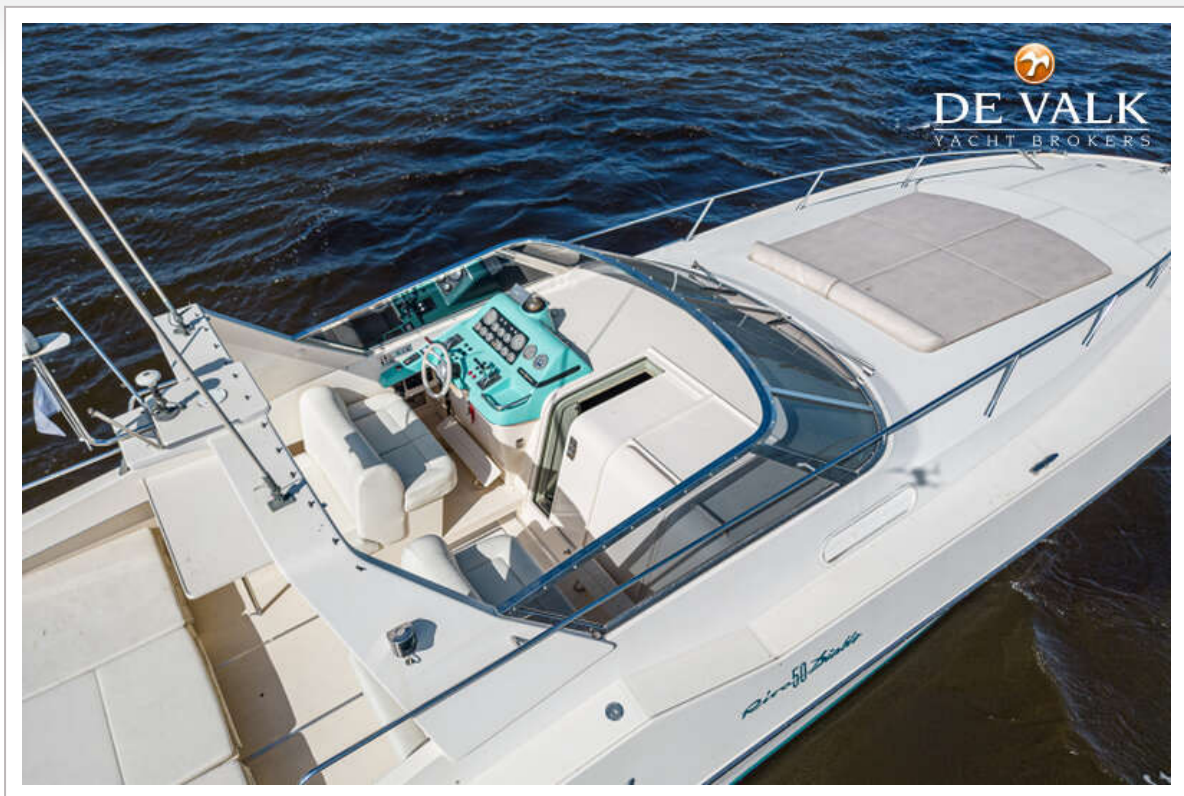
RIVA 50 DIABLE



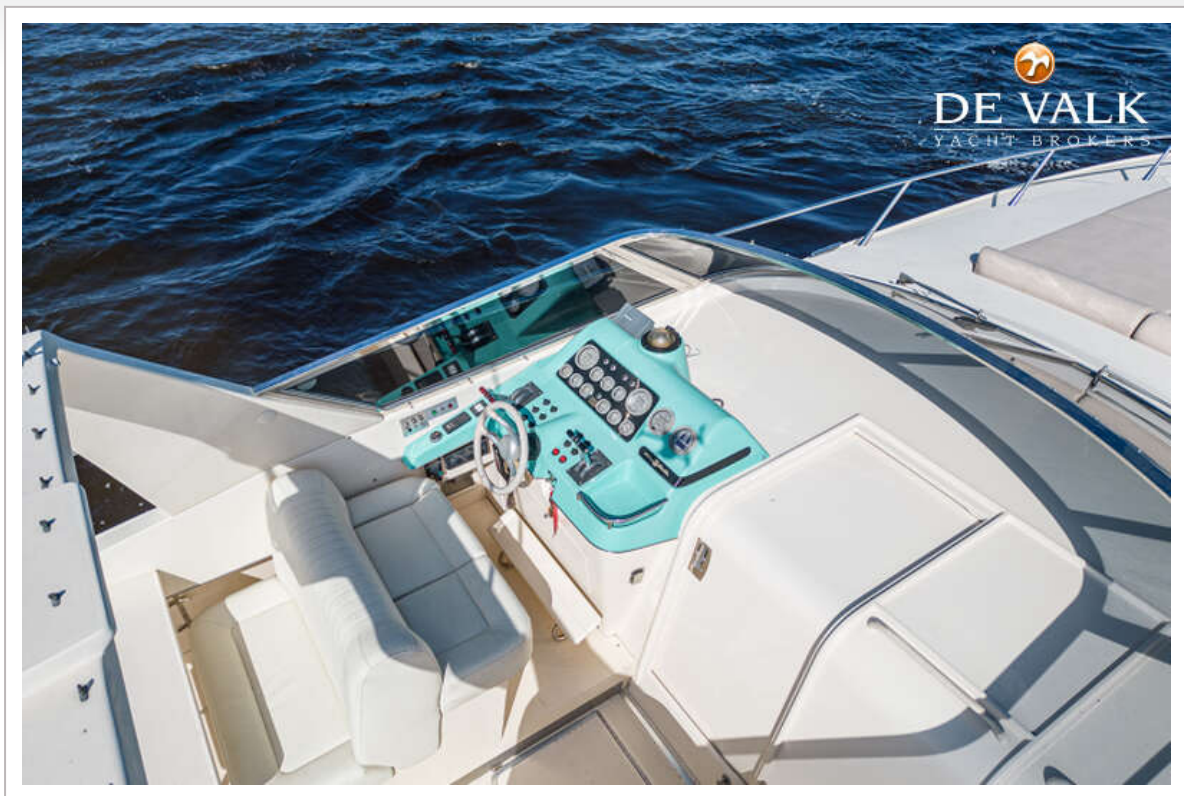
RIVA 50 DIABLO



RIVA 50 DIABLO



RIVA 50 DIABLO



RIVA 50 DIABLO



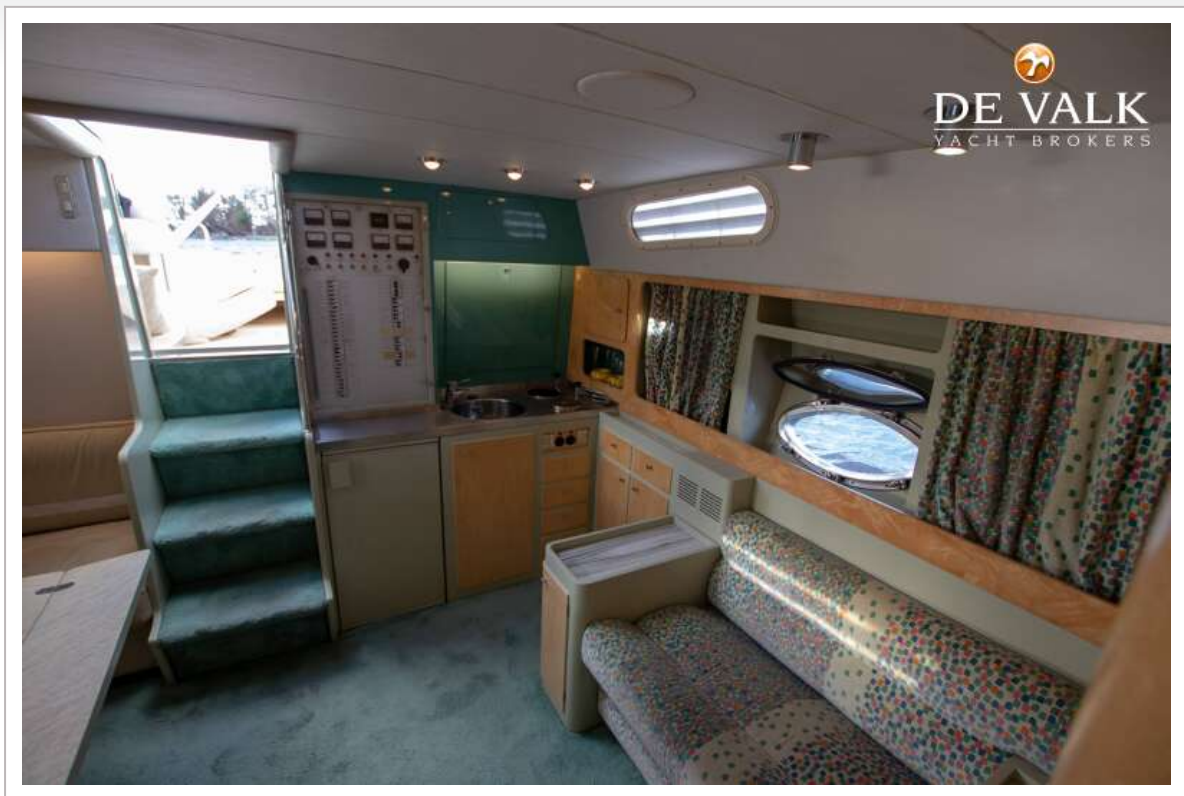
RIVA 50 DIABLO



RIVA 50 DIABLE



RIVA 50 DIABLO



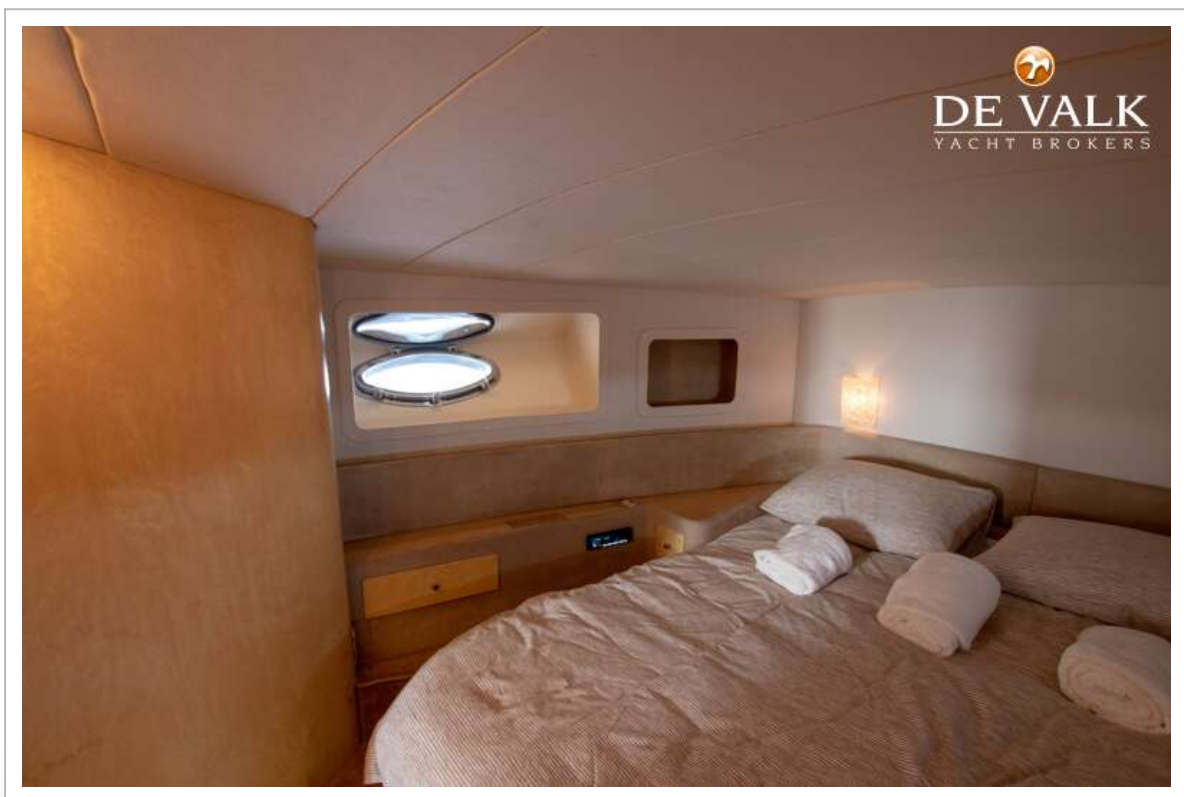
RIVA 50 DIABLE



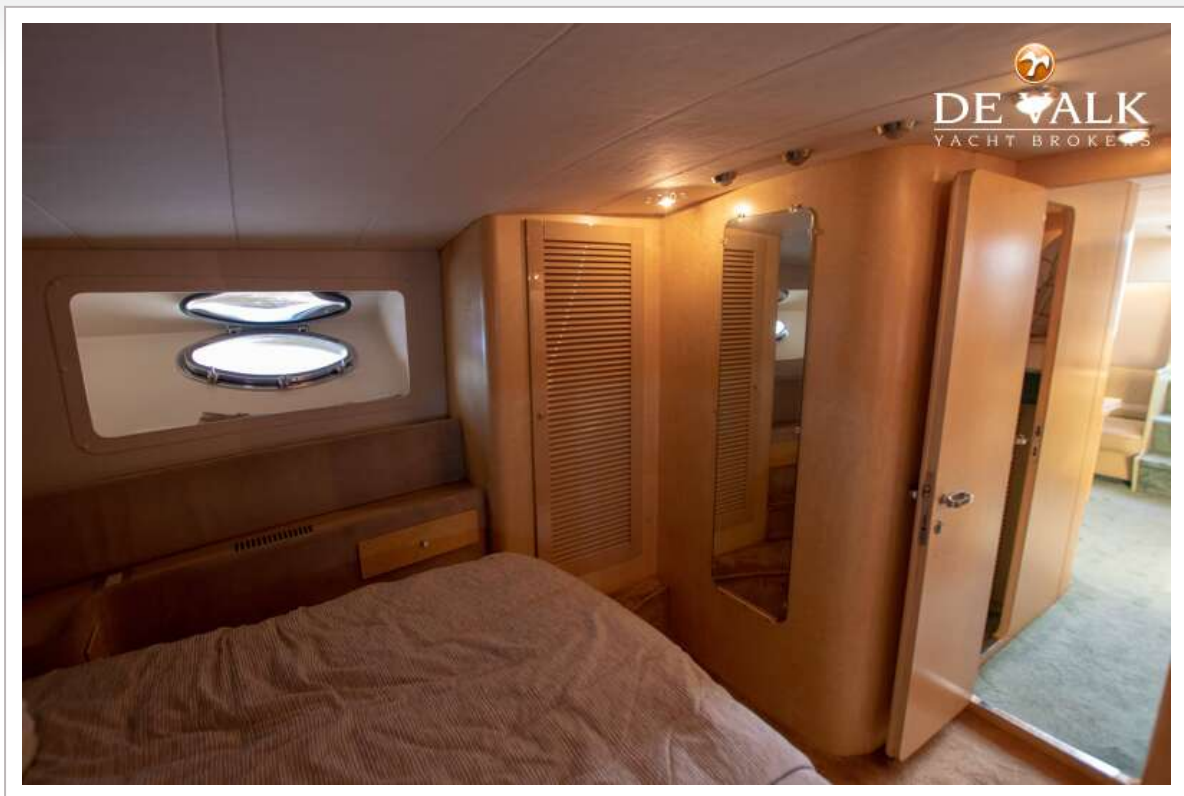
RIVA 50 DIABLE



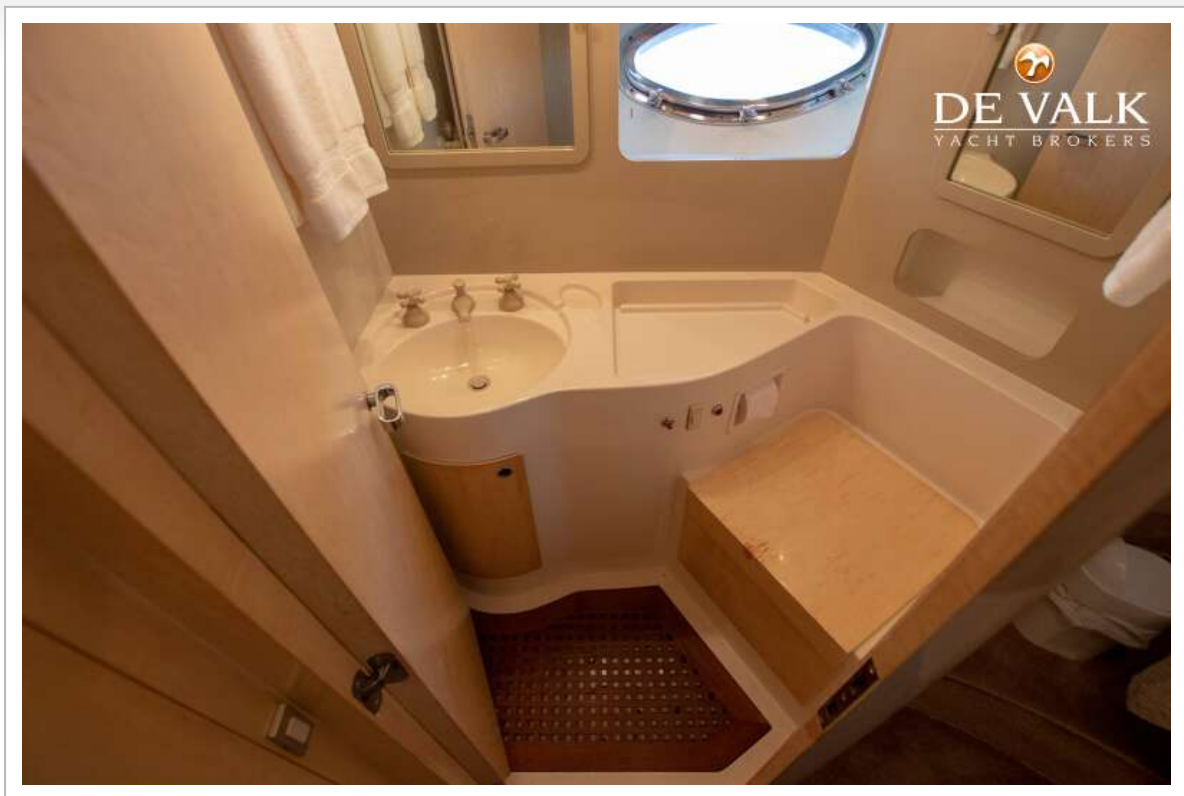
RIVA 50 DIABLO



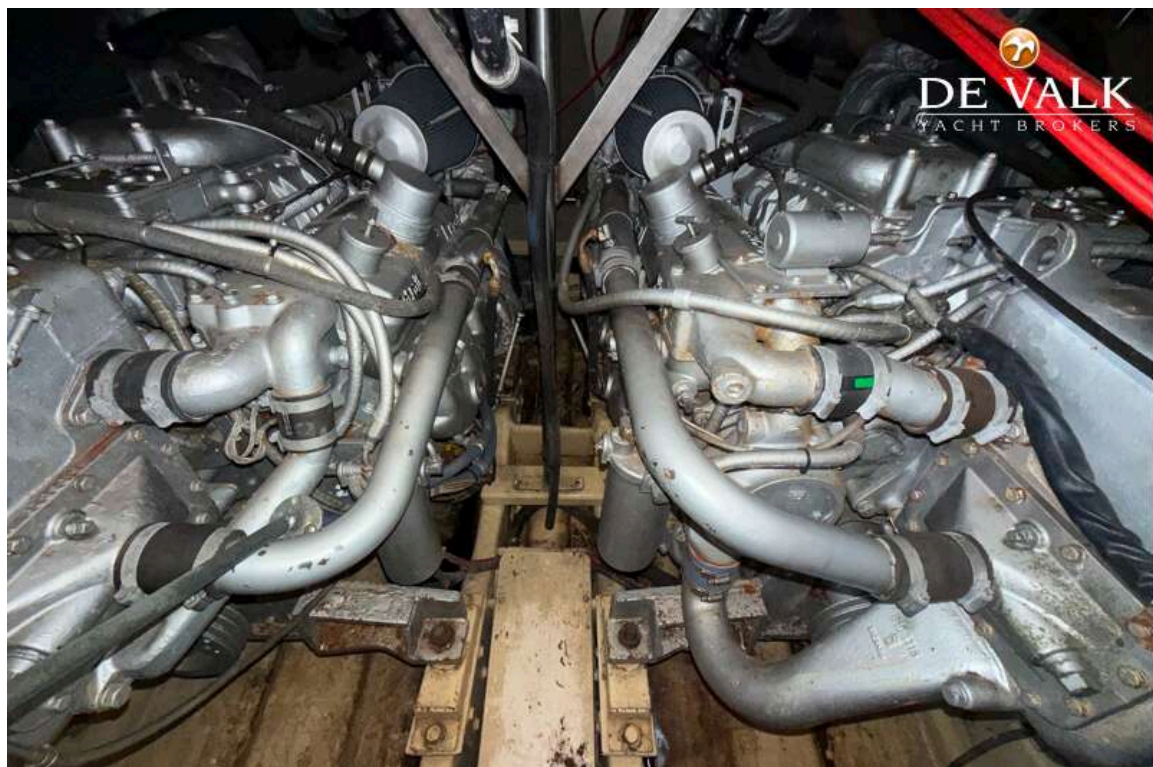
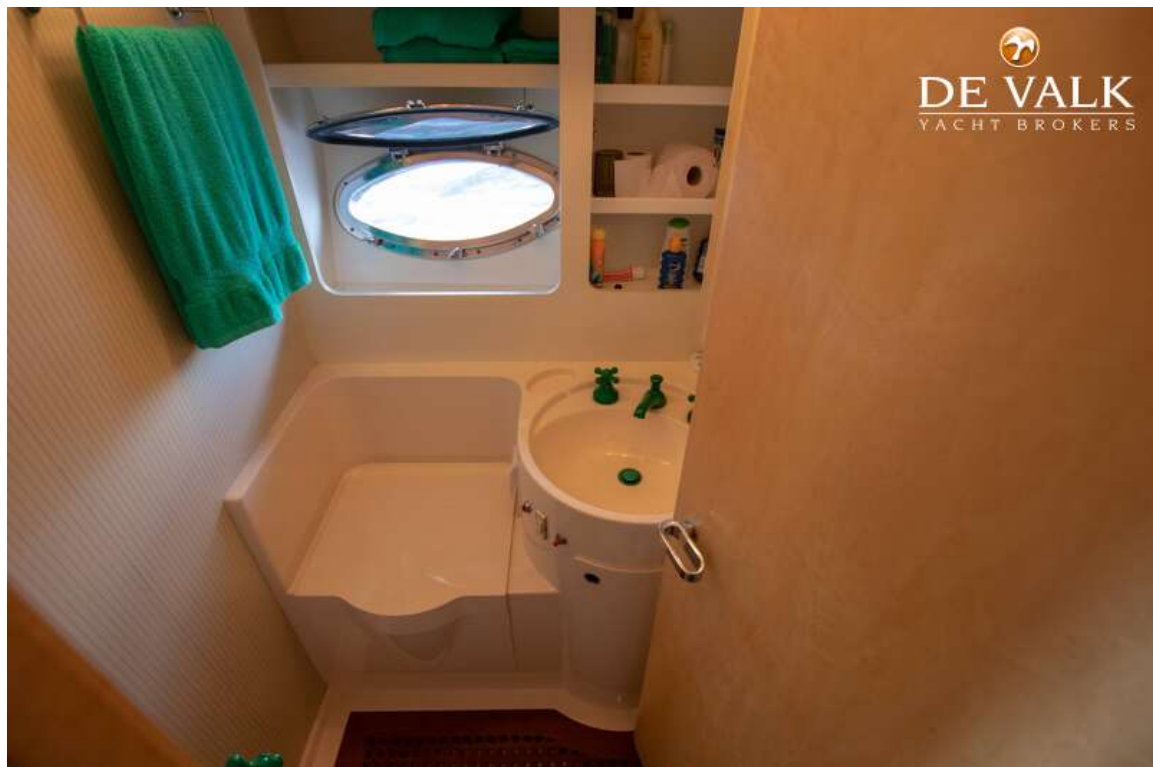
RIVA 50 DIABLE



RIVA 50 DIABLE



RIVA 50 DIABLE



RIVA 50 DIABLO

