



DE VALK
YACHT BROKERS



THIS YACHT WILL BE AUCTIONED

SCHOONER 30 M



DE VALK
YACHT BROKERS

BROKERAGE | CHARTER | BERTHS | FINANCE | INSURANCE | YACHT MANAGEMENT

SCHOONER 30 M

BROKER'S COMMENTS

The 30.20m schooner DALLINGHOO, the largest in the Hout Bay range by Dudley Dix Yacht Design, is an iconic classic yacht. Built in 1990 by Pritchard Shipyards, fully rebuilt in 2016 and refitted again in 2019, she offers timeless elegance with modern performance. Her rebuild included a new hull, rigging, and engine overhaul. With just one owner since and meticulous maintenance by a professional crew. The Schooner will be auctioned online at Bright Auctions. Bids can only be placed online at Bright Auctions. All information about the auction is available on the website <http://bit.ly/3V8YNbB>

Sjoerd Paddenburg

SPECIFICATIONS

Dimensions	30.44 x 5.80 x 2.56 (m)	Builder	S.A. Pritchard
Built	1990	Cabins	5
Material	Steel	Berths	10
Engine(s)	1 x Perkins diesel	Hp/Kw	185.00 (hp), 136.16 (kw)
Asking price	€ 100.000 (VAT Not paid)	Lying	contact Loosdrecht

CONTACT

Sales office	De Valk Loosdrecht B.V.	Telephone	+31 (0)35 582 90 30
Address	't Breukeleveense Meentje 6 1231LM Loosdrecht / Wijdmeren NL	E-mail	loosdrecht@devalk.nl

DISCLAIMER

These particulars are given in good faith as supplied but cannot be guaranteed.



SCHOONER 30 M

GENERAL

Model	SCHOONER 30 M
Type	sailing yacht
LOA (m)	30,44
Beam (m)	5,80
Draft (m)	2,56
Air draft (m)	22,00
Year built	1990
Launched	2015/2016 refit
Builder	S.A. Pritchard
Country	South Africa
Displacement (t)	72
CE norm	NA
Hull material	steel
Hull shape	Hard chine
Keel type	long keel Long fin keel
Bilge keels	Cleaned and painted between 2023 en november 2024
Deck material	steel
Deck finish	teak Burma teak, renewed 2015/2016
Antifouling (year)	May 2025
Fuel tank (litre)	2500L
Freshwater tank (litre)	3000L
Blackwater tank (litre)	600L
Wheel steering	hydraulic
Emergency tiller	yes
More info on hull	Hull thickness report available
More info on paintwork	Full hull paintjob 2024
Extra info	2023: fuel, fresh and blackwater tanks painted and cleaned
Extra info	2023: Lewmar electric deck winch fitted
Extra info	yes



SCHOONER 30 M

ACCOMMODATION

Cabins	5
Berths	10
Crew cabin	1
Crew berths	4
Interior	yes
Floor	Varnished hardwood
Saloon	yes
Air-conditioning	Replaced in Jan 2025, 2 new comp. and new heat exchanges + pump
Chart table	yes
Galley	Kitchen in full commercial grade stainless steel fitout with timber cabinets
Gas alarm	yes
Microwave	yes
Fridge	3x
Freezer	2x
Wine cooler	yes
Hot water system	yes
Water pressure system	Pumps rebuilt in October 2024
Dishwasher	yes
Ice maker	Domestic
Coffee maker	2x Krups
Crockery	yes
Owners cabin	double bed
Wardrobe	yes
Bathroom	en suite
Toilet	en suite
Toilet system	vacuum Dometic Sealand Vacuflush
Wash basin	in the bathroom
Shower	en suite
Guest cabin 1	double bed



SCHOONER 30 M

Wardrobe	yes
Bathroom	en suite
Toilet	en suite
Toilet system	vacuum Dometic Sealand Vacuflush
Wash basin	in the bathroom
Shower	en suite
Guest cabin 2	bunk bed
Wardrobe	yes
Bathroom	en suite
Toilet	en suite
Toilet system	vacuum Dometic Sealand Vacuflush
Wash basin	in the bathroom
Shower	en suite
Guest cabin 3	double bed Double cabin
Wardrobe	yes
Bathroom	yes
Toilet	en suite
Toilet system	vacuum Dometic Sealand Vacuflush
Wash basin	in the bathroom
Shower	en suite
Guest cabin 4	double bed Captains cabin / guestcabin if required
Bathroom	yes
Toilet	en suite
Toilet system	vacuum Dometic Sealand Vacuflush
Wash basin	in the bathroom
Shower	en suite
Washing machine	yes
Extra info	All cabins refitted in 2016, light bright cream and varnished

MACHINERY

No of engines	1
---------------	---



SCHOONER 30 M

Make	Perkins
HP	185
kW	136.16
Fuel	diesel
Year of overhaul	2019, top - bottom
Maximum speed (kn)	10
Cruising speed (kn)	8
Range (nm)	3000
Engine hours	886,7 (784 since rebuilt)
Drive	shaft
Shaft seal	New PSS stern gland system fitted in October 2024
Gearbox	hydraulic PRM500 (2016)
Bowthruster	electric Lewmar twin propeller checked july 2025
Propeller type	fixed
Propeller blades	3
Propeller shaft material	stainless steel
Manual bilge pump	1x manual + 1x petrol driven emergency bilge
Electric bilge pump	6x
Generator	Northern Light M864W.3 20KVA (2009) - rebuilt October 2024
Running hours generator	998 since rebuild
Generator 2	Paguro 3 - 10KVA silent running (2016)
Running hours generator 2	1792 from new
Start battery	2 x 12V sealed batteries 24V (new October 2024)
Service battery	12x 2V 800 Ah (new October 2024 excluding house batteries)
Generator battery	2 x 12V
Bowthruster battery	2 x 220Ah battery with own Victron 24V 30 Amp charger
Battery monitor	Mastervolt panel
Battery charger	Victron Chargers for every bank
Battery charger/inverter	Victron 24V 3000/70 A
Shorepower	with cable 220V
Watermaker	Sea Recovery 150LPH - serviced with two new membranes -Oct. 2024



NAVIGATION

Compass	Ritchie
Depth sounder	Raymarine and Garmin
Log	Raymarine
VHF	Sailor 6215 VHF DSC
VHF handheld	4 x Icom
Autopilot	Raymarine
Rudder angle indicator	Raymarine
Radar	Raymarine 24-mile
GPS	Raymarine and Garmin
Plotter	2x Raymarine
AIS transponder	Garmin 650 class B
EPIRB	Sea Safe E100GPS
Searchlight	3x

EQUIPMENT

Sprayhood	yes
Dodger	yes
Sun awning	yes
Cockpit cushions	yes
Boarding ladder	yes
Gangway	yes
Anchor	Delta Delta anchor 55kg
Anchor chain	HDG 12 x 36 x 40 G40 (75M)
Anchor 2	SPADE anchor 75kg
Anchor chain	HDG 12 x 36 x 40 G40 (100M)
Windlass	electrical Lofan's TITAN 2000W
Dinghy	McNulty 12 + 5hp Yamaha
Life raft	2 x 8 Man (new October 2024)
Lifejackets	6 x Solid 6 x Seago Classic 180n auto inflate
Safety harness	4 x Baltic Double Hook



SCHOONER 30 M

Danbuoy	yes
Horn	yes
TV	4x LG
Satellite	yes
Clock - barometer	Barigo
Fire extinguisher	5 x Extinguishers
Extra info	Dinghy : RIB Novurania 420TR centre console + 40HP outboard
Extra info	Diving equipment serviced, cylinders hydrostatic tested Oct2024

RIGGING

Rigging	gaff-rig Aluminium and painted
Material mast	Steel main mast with aluminium top masts - new paint Jan. 2025
Mainsail	88.9m2 / 957ft2
Main staysail	yes
Jib	yes
Yankee	yes
Multifunctional winches	12x Lewmar winches
Extra info	All rigging blocks removed, serviced, varnished and wrapped in bubble plastic for protection, waiting for the yacht to be commissioned. • All varnished capping rails stripped and sanded and re-varnished with Epiphanes Varnish, built up with multi coats of 2 pack PP and finished with multi coats of 1 part Epiphanes high gloss varnish. • New heavy duty tailor made boat cover purchased and fitted.
Extra info	1x foresail 55.9m2 / 645ft2 Total sail area: 260m2 / 2800ft2



SCHOONER 30 M



BROKERAGE | CHARTER | BERTHS | FINANCE | INSURANCE | YACHT MANAGEMENT

DE VALK
YACHT BROKERS



**This yacht will be auctioned,
for further details please visit www.devalk.nl**

**Dit schip zal worden geveild,
voor meer informatie gaat u naar www.devalk.nl**

**Dieses Schiff wird versteigert,
für weitere informationen besuchen Sie www.devalk.nl**

WWW.DEVALK.NL



DE VALK
YACHT BROKERS



SCHOONER 30 M



SCHOONER 30 M



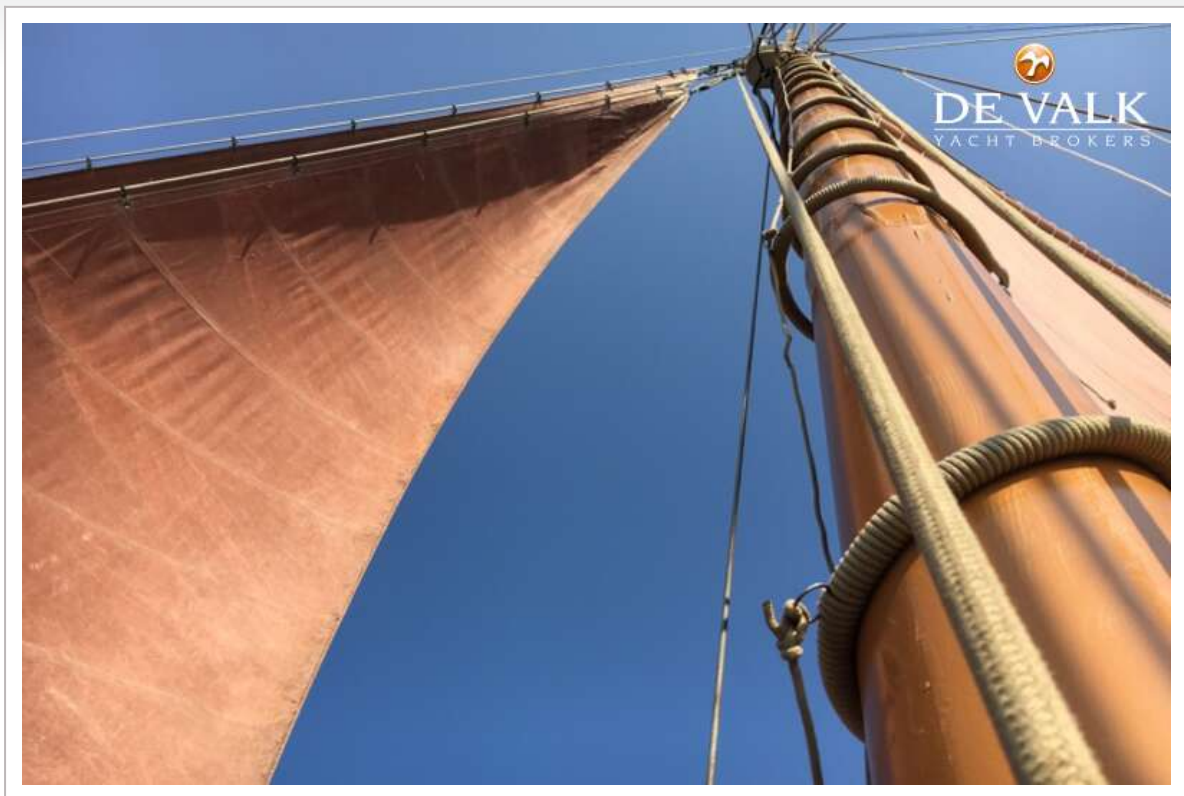
SCHOONER 30 M



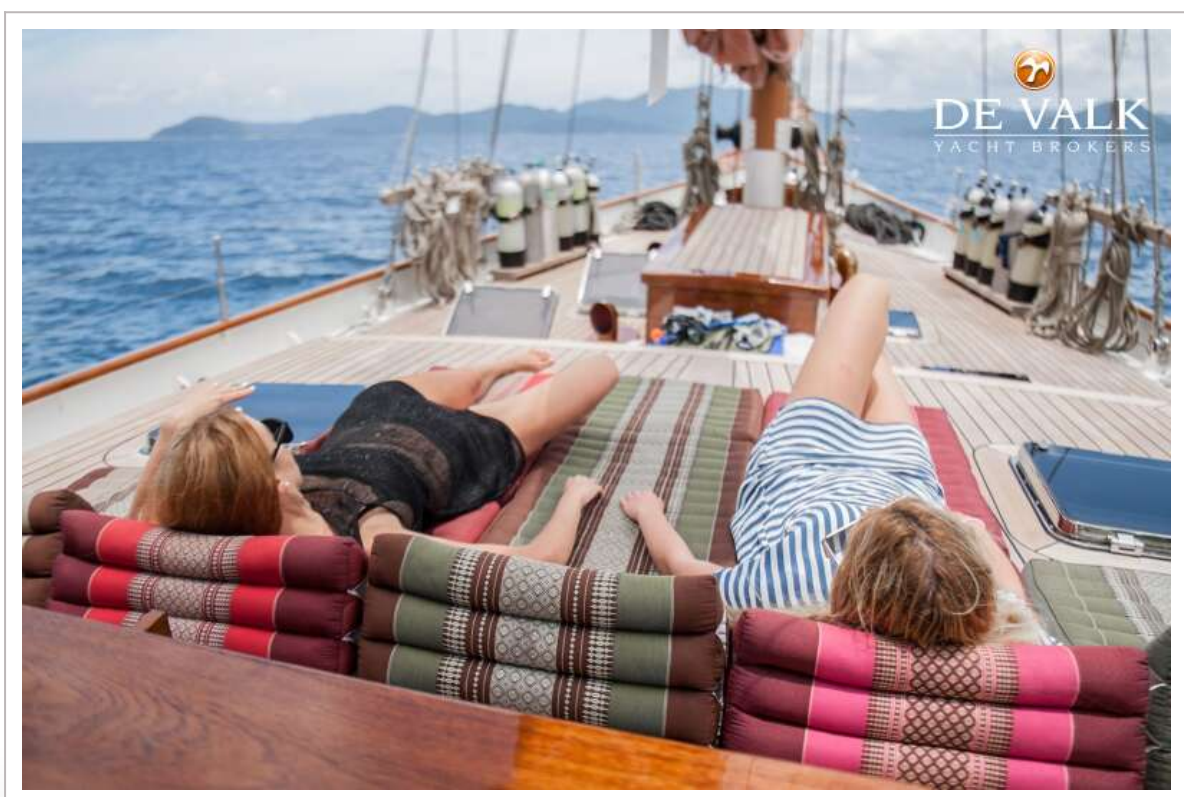
SCHOONER 30 M



SCHOONER 30 M



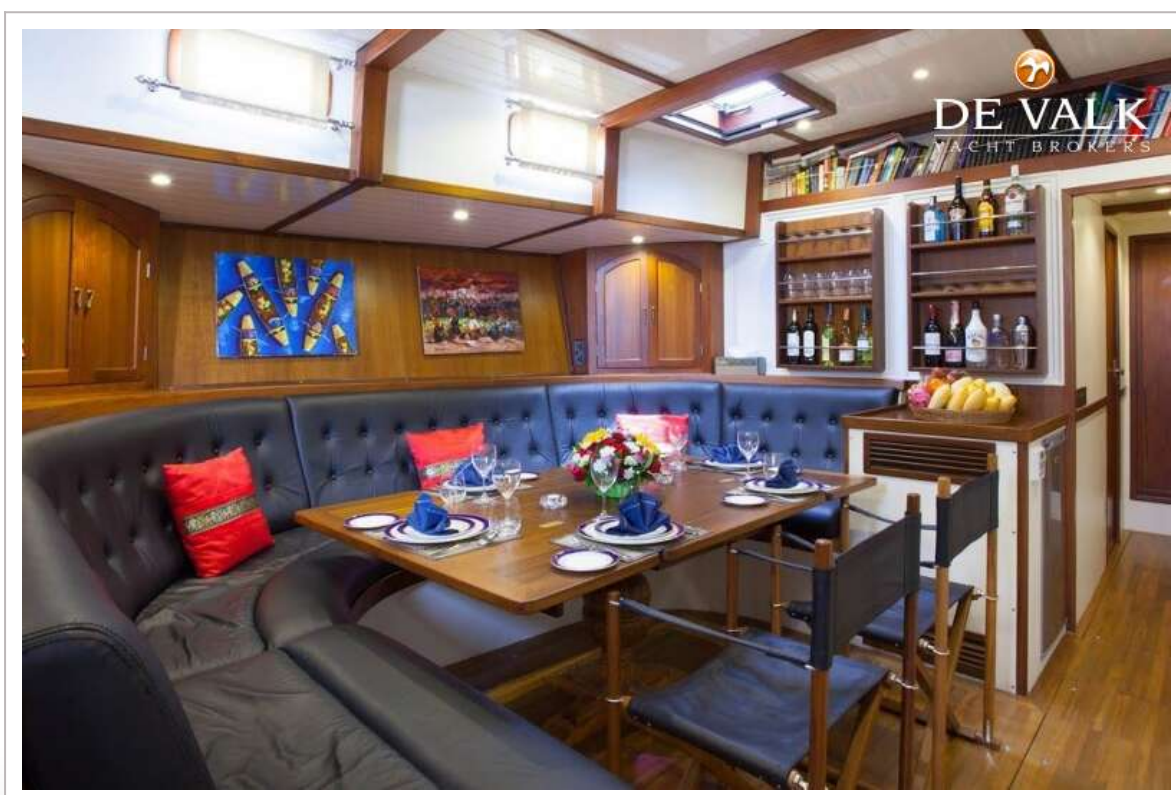
SCHOONER 30 M



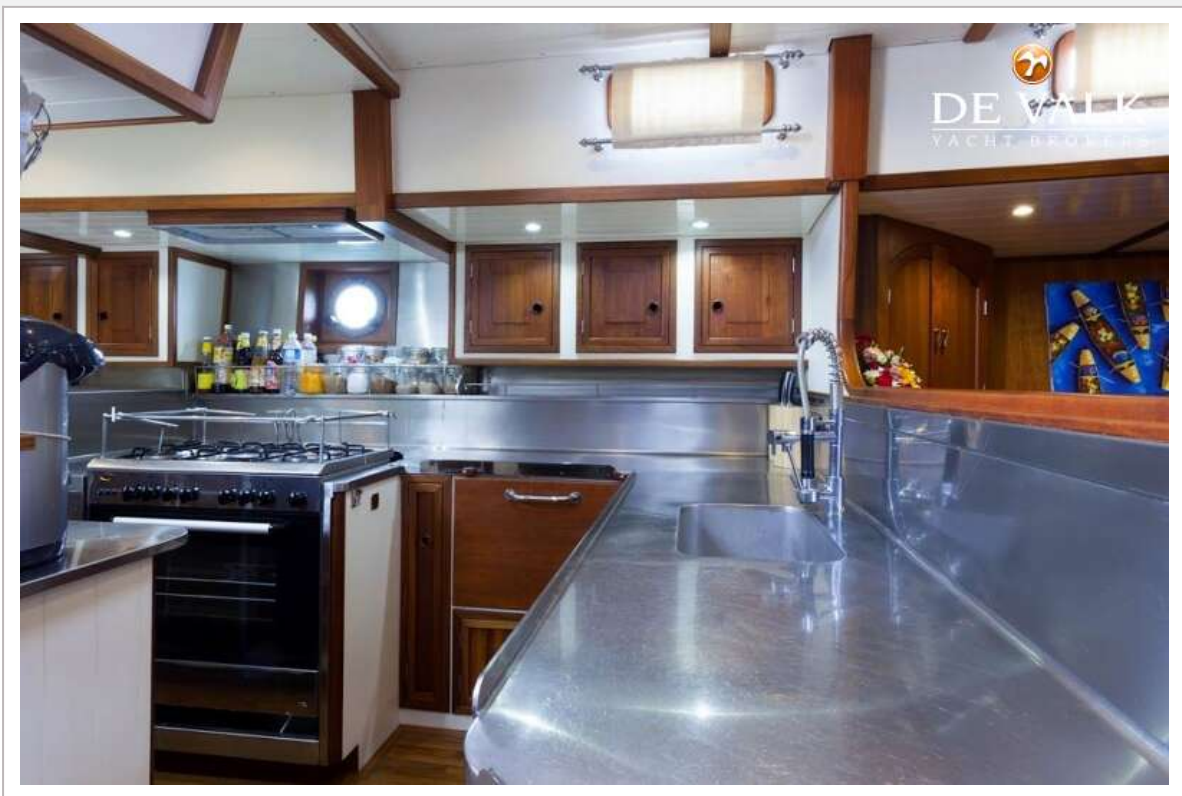
SCHOONER 30 M



SCHOONER 30 M



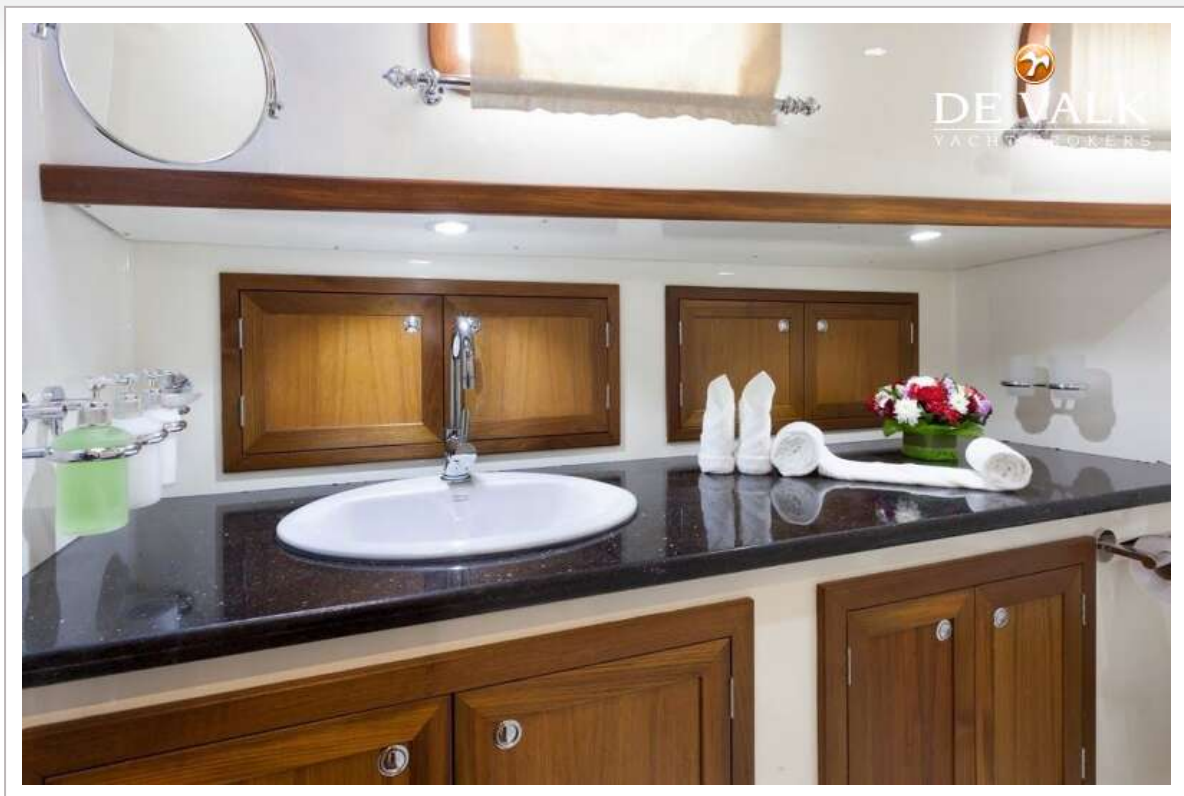
SCHOONER 30 M



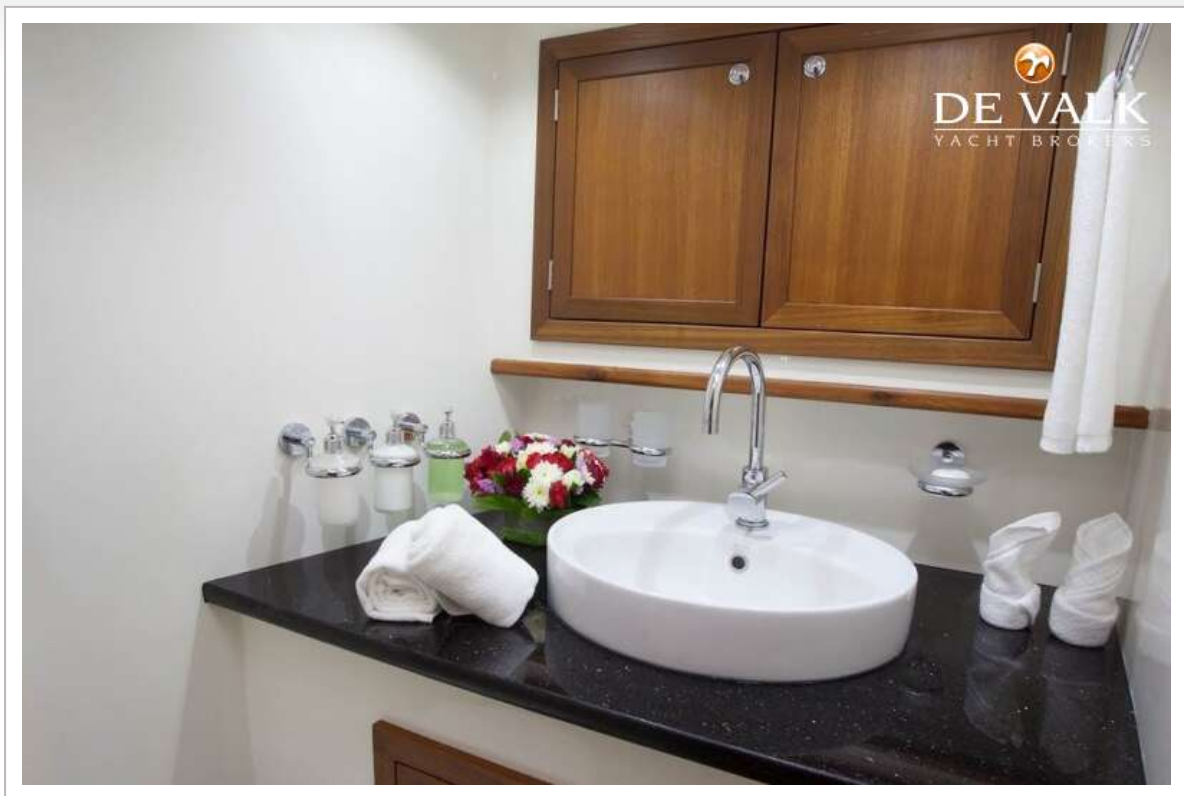
SCHOONER 30 M



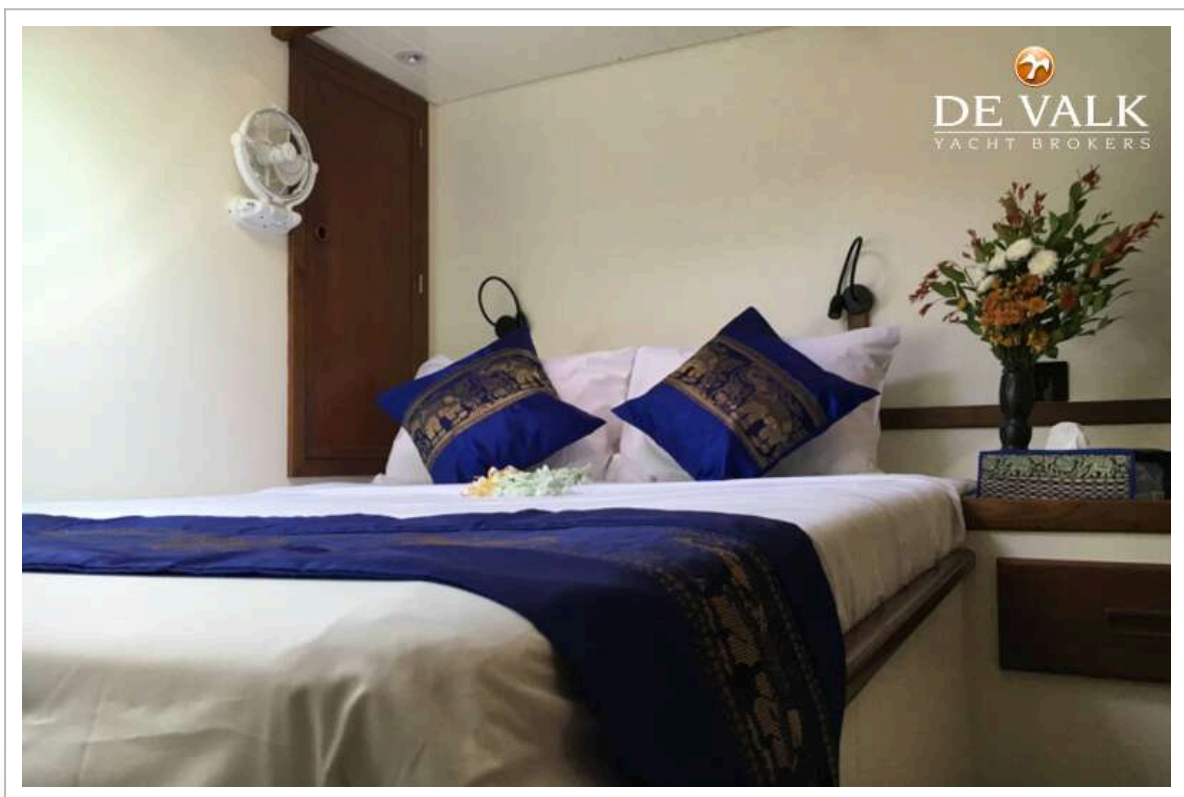
SCHOONER 30 M



SCHOONER 30 M



SCHOONER 30 M



SCHOONER 30 M



SCHOONER 30 M

