



HERMINE 40 D

HERMINE 40 D

BROKER'S COMMENTS

The Hermine 40 has been designed and built for travelling. This full aluminium yacht is capable of great upwind performance thanks to its ballasted daggerboard and 2 rudders. With its fluid and straight lines, the design is superb (plans by F. Lucas). Pilot and windvane gear make manoeuvring easy. The cabinetry of the fittings is well thought out. Numerous stowages allow to store food and personal effects for long voyages. She is well equipped with a Nanni diesel/electric engine, bowthruster, generator, watermaker etc. "Seaweed" is ready for a new adventure!

Reinier van der Wolf

SPECIFICATIONS

Dimensions	11.99 x 4.07 x 0,90 / 2.50 (m)	Builder	Technimar, St Malo
Built	2002	Cabins	2
Material	Aluminium	Berths	6
Engine(s)	1 x Nanni 4.220HE Hybrid	Hp/Kw	50.00 (hp), 36.75 (kw)
Asking price	sold (VAT)	Lying	elsewhere / Not at sales office

CONTACT

Sales office	De Valk Monnickendam B.V.	Telephone	+31 (0)299 65 63 50
Address	Hoogedijk 6 1145 PM Katwoude NL	E-mail	monnickendam@devalk.nl

DISCLAIMER

These particulars are given in good faith as supplied but cannot be guaranteed.



GENERAL

Model	HERMINE 40 D
Type	sailing yacht
LOA (m)	11,99
LWL (m)	11,43
Beam (m)	4,07
Draft (m)	2,50
Draft min (m)	0,90
Year built	2002
Builder	Technimar, St Malo
Country	France
Designer	François Lucas (Nantes)
Displacement (t)	11
Ballast (tonnes)	3 of which centerboard 750kg
CE norm	A
Hull material	aluminium
Hull colour	grey
Hull thickness (mm)	4 until 12 mm.
Hull shape	round-bilged
Keel type	centreboard Hydroem 339HE 12v (2018) Hydraulic
Superstructure material	aluminium AG 5086 or 5083
Deck material	aluminium
Deck finish	yes
Superstructure deck finish	yes
Cockpit deck finish	teak
Antifouling (year)	Sonic Shield 111 acoustic antifouling system
Dorades	yes
Deckhatch	8 xGoiot
Portholes	8x Altuglas (2020)
Insulation	80mm. (deck and hull up to floor)
Fuel tank (litre)	550



HERMINE 40 D

Level indicator (fuel tank)	MarineLec
Freshwater tank (litre)	600
Level indicator (freshwater)	MarineLec
Blackwater tank (litre)	stainless steel
Blackwater tank extraction	deck extraction + pump
Greywater tank (litre)	In kitchen
Tiller	yes
Extra info	two rudders on ailerons stabilising the grounding

ACCOMMODATION

Cabins	2
Berths	6
Interior	ash
Floor	teak and holly
Pilot house/deck saloon	Aluminium, offering a very comfortable sheltered lookout (2010)
Doghouse	yes
Saloon	yes
Headroom saloon (m)	yes
Heating	diesel ducted hot air Mikuni
Heating 2	stove diesel Refleks 65M, with 5l. gravity tank
Chart table	yes
Aft Cabin	yes
Galley	yes
Countertop	corian
Sink	Corian Double
Cooker	calor gas Force 10, 2 burner + oven
Fridge	Top loader (42x44x39 cm)
Hot water system	220V + engine
Water pressure system	electrical Jabsco Par-Max 3
Manual and/or foot pump	yes
Owners cabin	double bed Front



HERMINE 40 D

Wardrobe	hanging and drawers
Guest cabin 1	double bed After starboard
Wardrobe	hanging
Bathroom	separate At the rear of the kitchen
Toilet	separate Jabsco 2000
Wash basin	yes
Shower	yes
Extra info	LED interior lighting
Extra info	Head room: Entrance: 1.90m. Salon: from 1.90m down to 1.83m Front Cabin: 1.75m. Rear Cabin: 1.75m

MACHINERY

No of engines	1
Make	Nanni
Type	4.220HE Hybrid
HP	50
kW	36.75
Year installed	2002
Engine hours	2319
Engine cooling system	freshwater heat exchanger Cooling sea water temperature alarm
Drive	shaft
Gearbox	PRM 150
Bowthruster	electric Maxpower VIP100 retractable
Exhaust	watercooled
Propeller type	MaxProp
Propeller blades	19" Max-Prop 3-blade
Propeller shaft material	stainless steel
Manual bilge pump	in cockpit Whale MK5
Electric bilge pump	automatic and manual Johnson
Generator	Electric motor 10Kw / generator 5kW - 48v (760A) (June2011)
Batteries	2x 48v propulsion batteries (4x 12v) Odyssey



HERMINE 40 D

Start battery	180 Ah
Service battery	180 Ah
Bowthruster battery	100 Ah
Windlass battery	180 Ah
Battery charger	Dolphin 12v 30A
Battery charger/inverter	Victron Energy Plus 48V 3000 VA 35A
Wind generator	Airbreeze 48V
Solar panel	4x 48W
Insulation transformer	yes
Watermaker	Katadyn Power Survivor 40E (never used)
Extra info	Stainless steel shaft 316L diam. 40 Volvo rotating joint (2018)
Extra info	Centrifugal filter and 2 alternative parallel pre-filters

NAVIGATION

Compass	yes
Depth sounder	yes
Log	Electromagnetic
VHF	DSC Standard Horizon Eclipse DSC+
VHF handheld	Icom
Autopilot	Simrad TP32
Wind vane steering install.	yes
Radar	Lowrance HDS Broadband BR24
Plotter	Lowrance HDS7m with external GPS
AIS transponder	Display on plotter
Radio receiver	ICOM IC-R75 0.03-60 Mhz
EPIRB	Mac Murdo Smart Find G8 (2021)
Navigation lights	LED lights
Extra info	Gyropilot graphic, 2 multi-function display performance.

EQUIPMENT

Anchor	Spade, 20kg
--------	-------------



HERMINE 40 D

Anchor chain	60m BBB Galva chain 10 mm (2015) + nylon hawser
Anchor 2	Aluminium 9 kg, Spade
Anchor chain	40 m. hawser
Windlass	electrical Maxwell RC10
Dinghy	inflatable Zodiac CFR310 with paddles (2002)
Outboard	Electric Torqeedo Travel (+/- 2010)
Life raft	Plastimo Transocean (2017)
Life raft (pers)	6
Safety harness	6 Certec inflatable, with Wichard lanyards
Safety lines on deck	yes
TV	Toshiba
Radio-cd player	With USB and 4 speakers
Speakers in salon	yes
Clock - barometer	yes
Fire extinguisher	2x
Extinguisher in engine room	1x

RIGGING

Rigging	yes
Standing rigging	2015
Brand mast	Marechal + boom
Material mast	aluminium coated 14.50 m.
Spreaders	Double
Mainsail cover	yes
Fully battened mainsail	with lazyjacks High Tenacity Dacron 35m2 (2018) 4 reefs
Genoa	115% Hydranet Spectra Crosscut Jeckells (2014)
Genoa furler	Profurl NC42 (2002)
Spinnaker	Asymmetric Tonnerre 100m2 triradial (2002) on Karver furler
Staysail	Tonnerre re-cut for Profurl furler C350 (2014)
Boomvang	Bamar
Secondary sheet winch	2x Andersen 40ST2SP



HERMINE 40 D

Genoa sheetwinches

2x Andersen 52ST2SP

Halyard winches

2x Andersen 28ST2SP

Reefing winch

1x Andersen 12ST2SP

Spi-pole

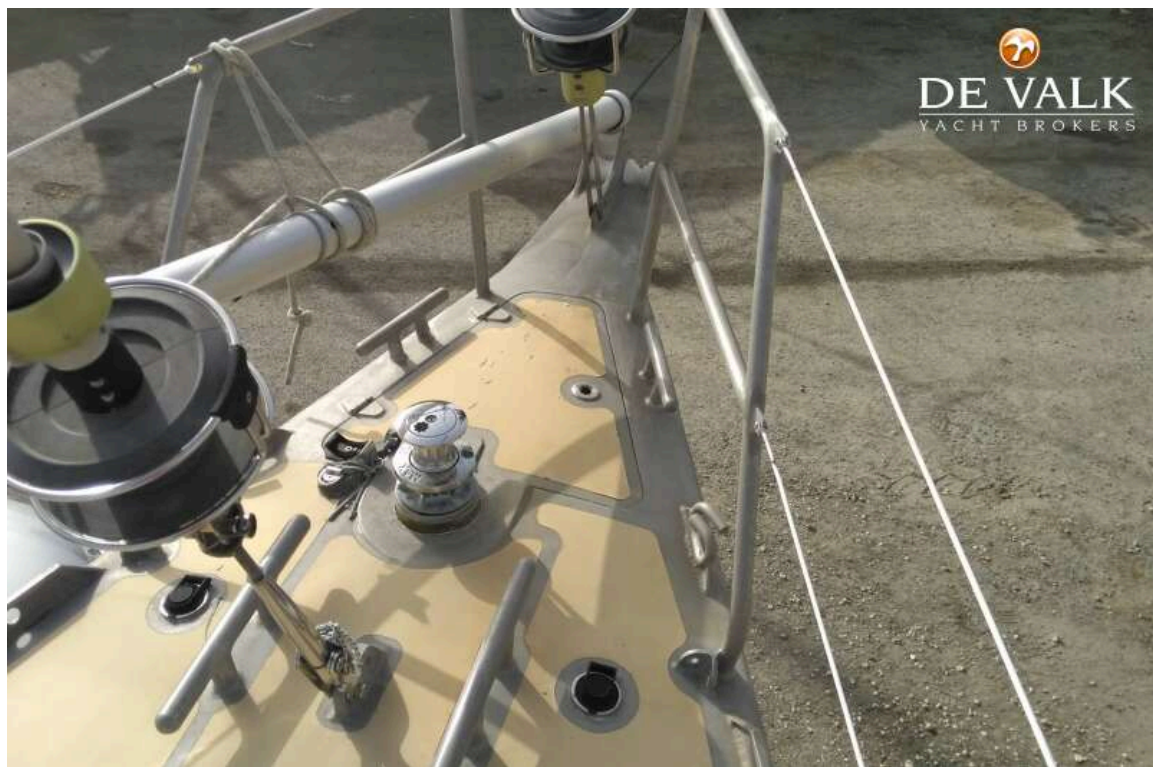
+ short genoa pole

Extra info

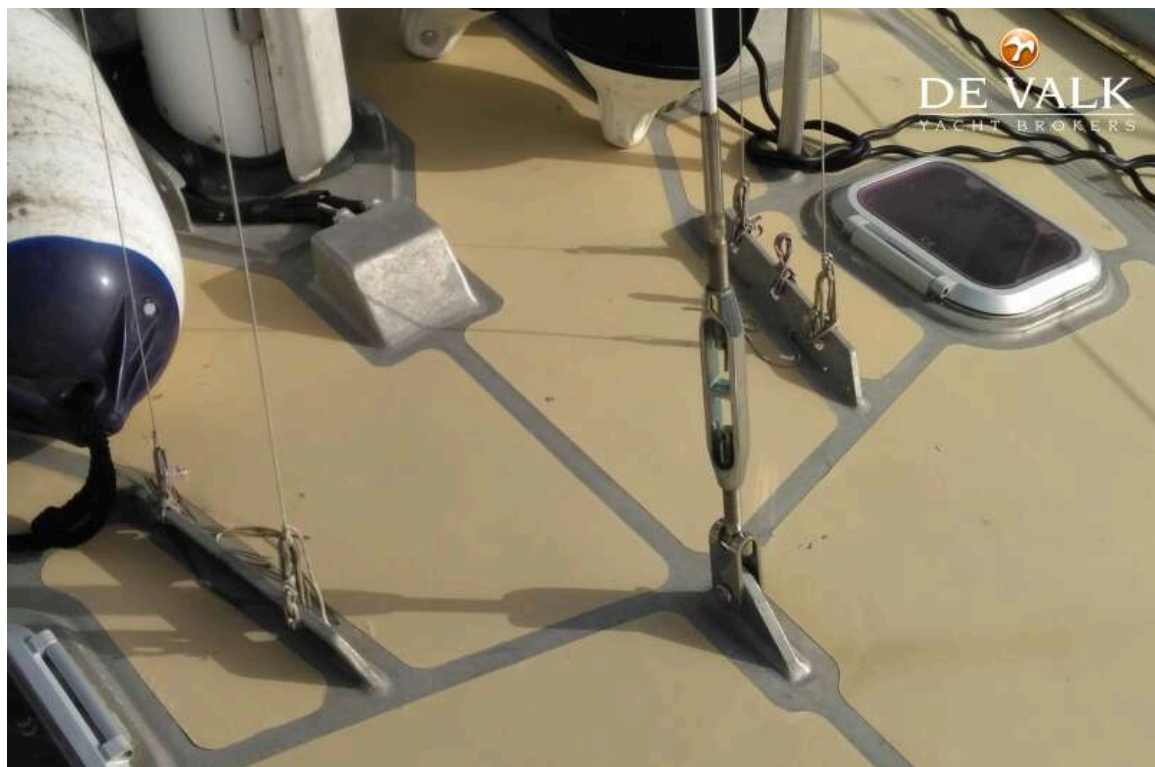
Retractable bowsprit



HERMINE 40 D



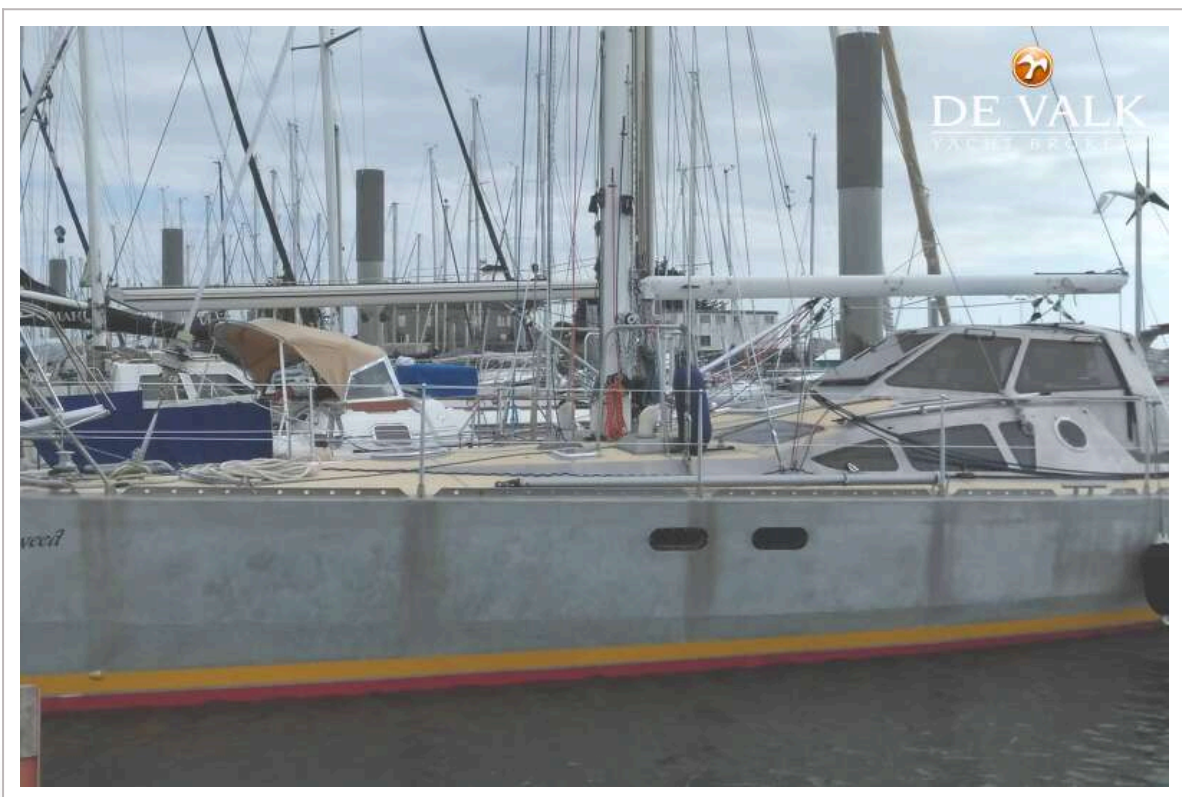
HERMINE 40 D



HERMINE 40 D



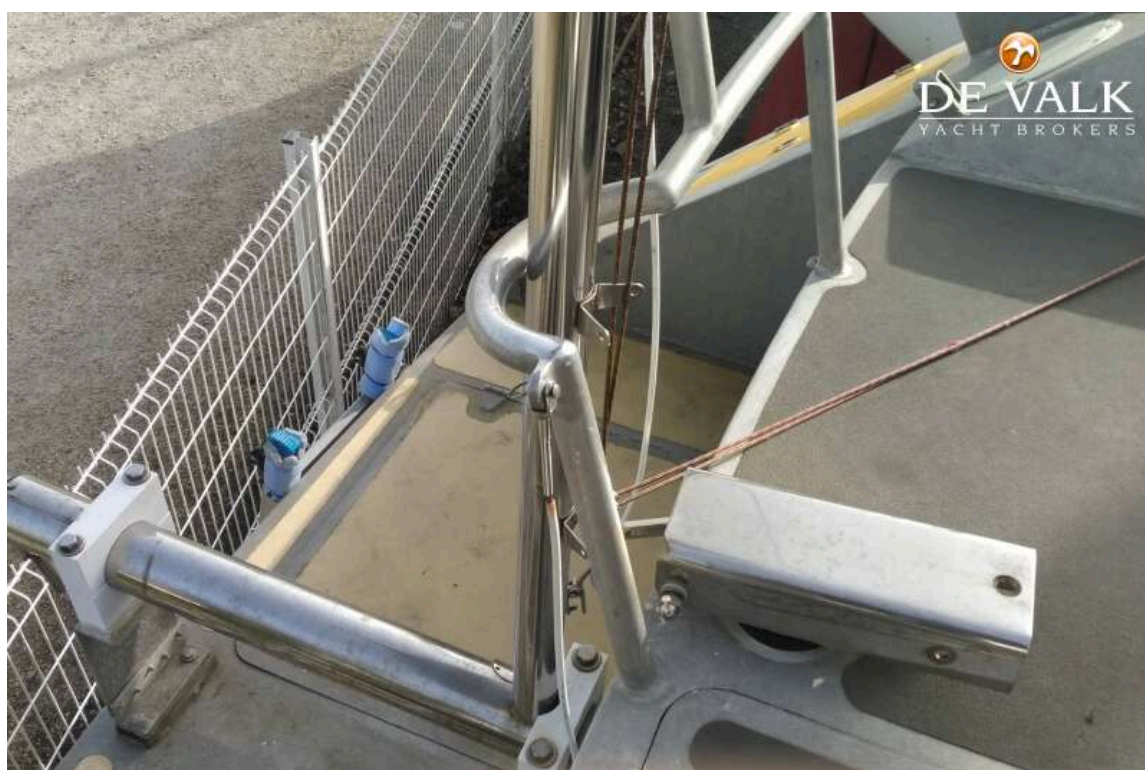
HERMINE 40 D



HERMINE 40 D



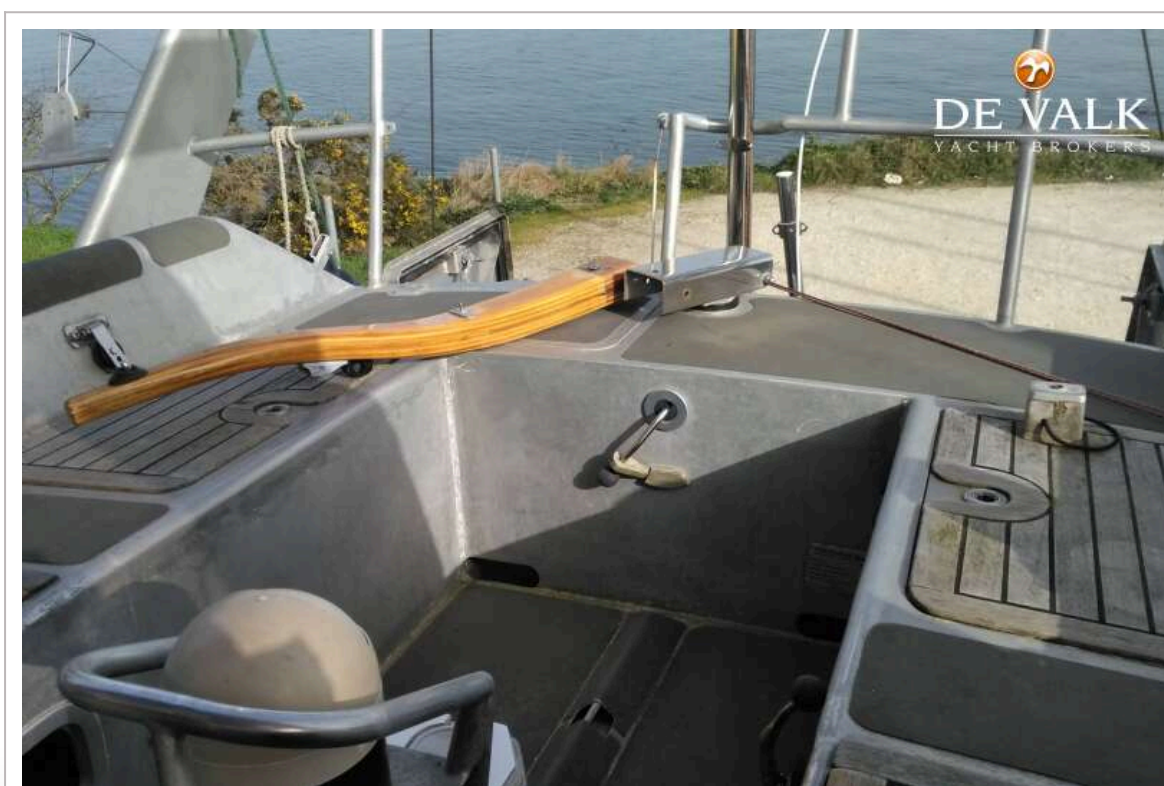
HERMINE 40 D



HERMINE 40 D



HERMINE 40 D



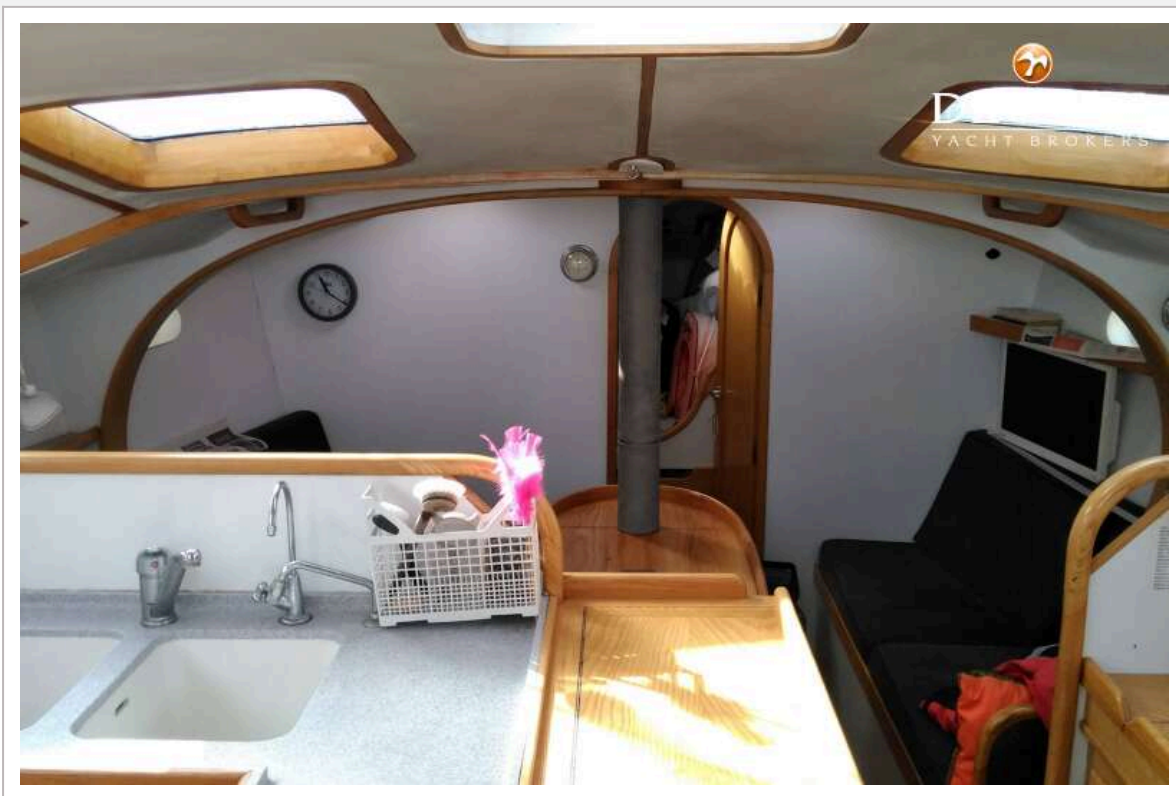
HERMINE 40 D



HERMINE 40 D



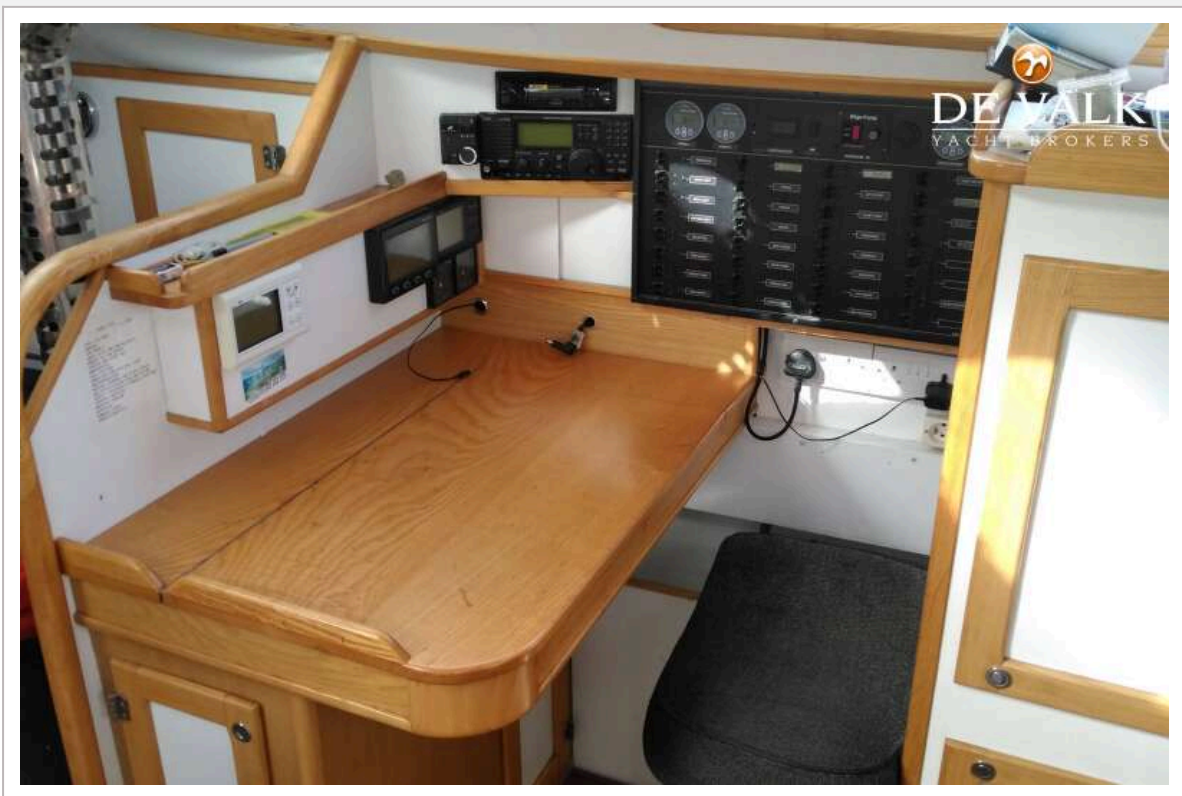
HERMINE 40 D



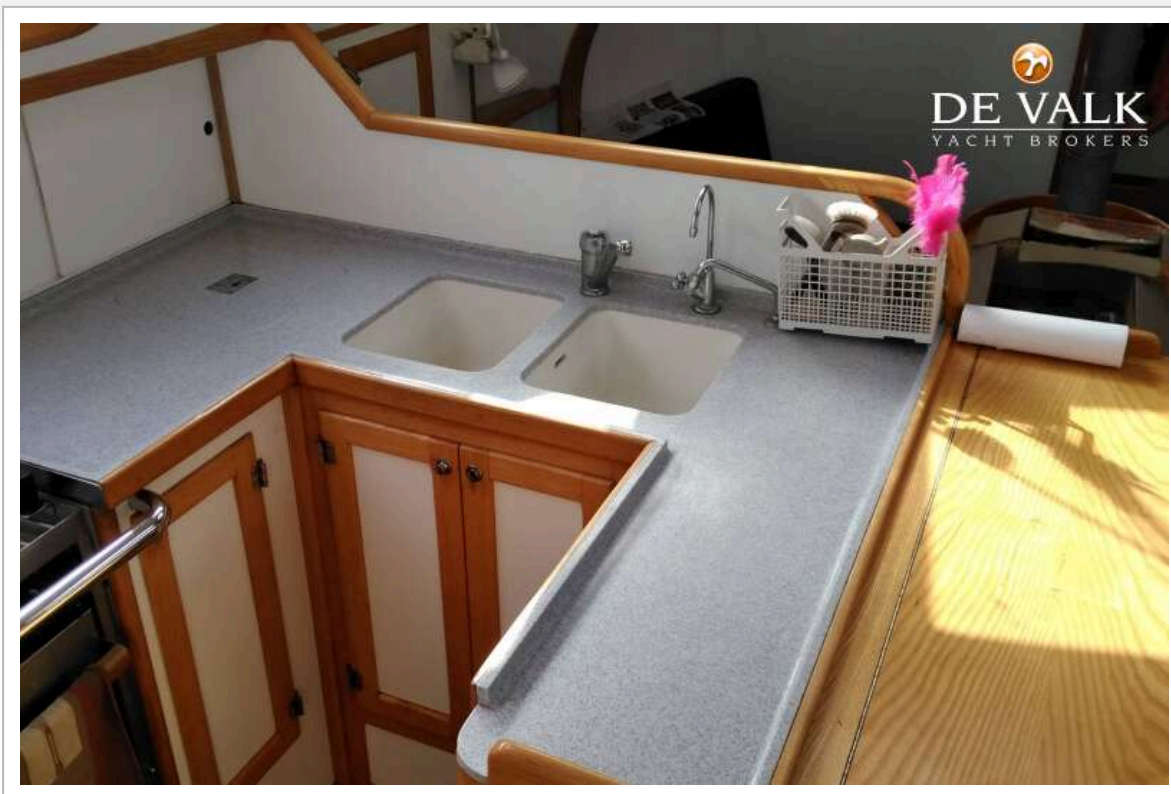
HERMINE 40 D



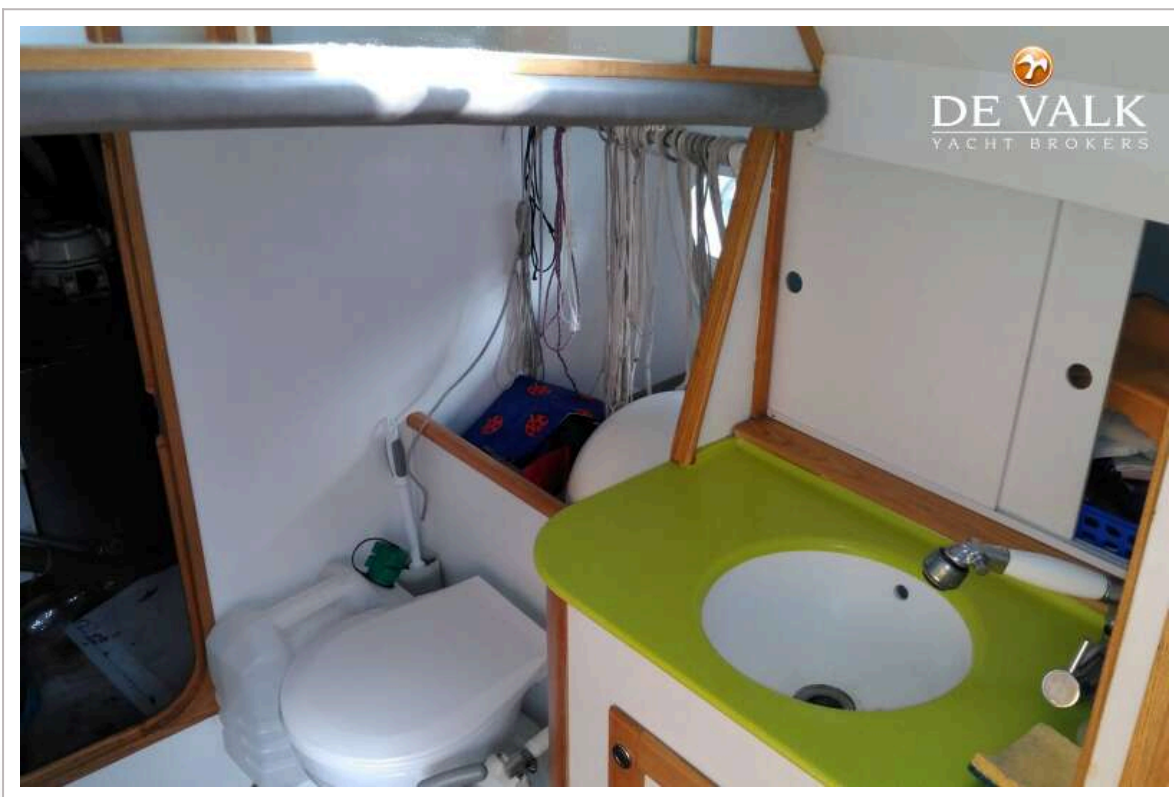
HERMINE 40 D



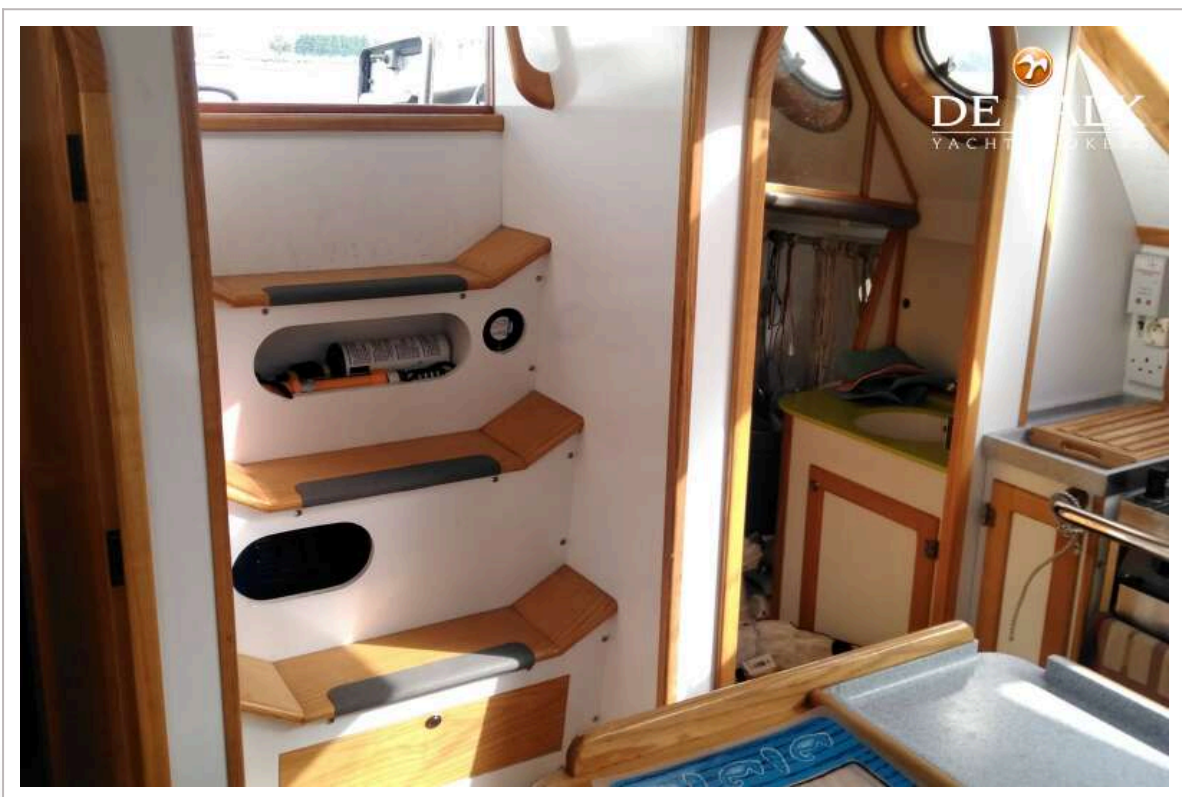
HERMINE 40 D



HERMINE 40 D



HERMINE 40 D



HERMINE 40 D



HERMINE 40 D

