



DE VALK
YACHT BROKERS



BOWMAN 49 KETCH



DE VALK
YACHT BROKERS

BOWMAN 49 KETCH

BROKER'S COMMENTS

Famous Holman & Pye designed world cruiser. The Bowman 49 Ketch is built for long distance cruising with a comfortable stay on board. With her 2 cabin layout, each with its own bathroom she is ideal to cruise with family or friends. Equipped with a strong Nanni diesel engine which was installed in 2011, together with lots of other renewings she is now ready for a new adventure. The Bowman 49 Ketch can be visited at our sales office in Sint Annaland 7 days a week.

Joris van de Rijt

SPECIFICATIONS

Dimensions	14.98 x 4.28 x 2.28 (m)	Builder	Southern Boatbuilding Company Limited
Built	1980	Cabins	2
Material	GRP	Berths	7
Engine(s)	1 x Nanni N485 diesel	Hp/Kw	85.00 (hp), 62.56 (kw)
Asking price	€ 110.000 (VAT Exempt)	Lying	at sales office

CONTACT

Sales office	De Valk Sint Annaland	Telephone	+31 166 601 000
Address	Koelhuisweg 4 4697 RM Sint Annaland The Netherlands	E-mail	sintannaland@devalk.nl

DISCLAIMER

These particulars are given in good faith as supplied but cannot be guaranteed.



BOWMAN 49 KETCH

GENERAL

Model	BOWMAN 49 KETCH
Type	sailing yacht
LOA (m)	14,98
LWL (m)	11,90
Beam (m)	4,28
Draft (m)	2,28
Air draft (m)	19,80
Headroom (m)	2,05
Year built	1980
Builder	Southern Boatbuilding Company Limited
Country	United Kingdom
Designer	Holman & Pye
Displacement (t)	16,7
Ballast (tonnes)	lead 5,9
Hull material	GRP
Hull colour	white
Hull shape	round-bilged
Keel type	fin keel
Superstructure material	GRP
Rubbing strake	wood With stainless steel (all new 2015)
Deck material	GRP
Deck finish	teak New placed in 2004 and renovated in winter 2014/2015
Superstructure deck finish	teak New placed in 2004 and renovated in winter 2014/2015
Cockpit deck finish	teak New placed in 2004 and renovated in winter 2014/2015
Antifouling (year)	2023
Window frame	aluminium
Window material	perspex
Deckhatch	yes
Fuel tank (litre)	300
Level indicator (fuel tank)	(new 2017)



BOWMAN 49 KETCH

Freshwater tank (litre)	2x 300
Blackwater tank (litre)	polyethylene 47 (new 2009)
Blackwater tank extraction	deck extraction + pump (new pump 2017)
Wheel steering	mechanical (steering system renovated in winter 2014/2015)
Emergency tiller	yes
Extra info	Hull + superstructure polished in 06-2024

ACCOMMODATION

Cabins	2
Berths	7
Interior	teak
Floor	teak and holly
Aft deck	yes
Saloon	yes
Headroom saloon (m)	2,05
Heating	diesel ducted hot air Webasto airtop 5000 (checked in 2016)
Chart table	yes
Aft Cabin	yes
Dinette	yes
Galley	yes
Countertop	plastic
Sink	stainless steel
Cooker	calor gas 4 burner
Oven	yes
Fridge	Waeco (new thermostat and evaporator 2016)
Hot water system	220V + engine Johnson 45L (new 2017)
Water pressure system	electrical Parmax 4 (new 2017)
Manual and/or foot pump	yes
Owners cabin	double bed + single bed Aft
Bed length (m)	1,98 x 1,50 + 2,00 x 0,55
Wardrobe	hanging and shelves



BOWMAN 49 KETCH

Bathroom	en suite I
Toilet	en suite
Toilet system	manual Jabsco (new pump 2016)
Wash basin	in the bathroom
Shower	en suite
Guest cabin 1	v-bed
Bed length (m)	1,80
Wardrobe	hanging and shelves
Bathroom	en suite II
Toilet	en suite
Toilet system	manual Jabsco (new pump 2022)
Wash basin	in the bathroom
Shower	en suite

MACHINERY

No of engines	1
Make	Nanni
Type	N485
HP	85
kW	62.56
Fuel	diesel
Year installed	2011
Maximum speed (kn)	8
Cruising speed (kn)	7
Engine hours	1088
Engine cooling system	freshwater heat exchanger
Drive	shaft
Engine controls	bowden cable
Gearbox	mechanical (new installed together with the engine in 2011)
Bowthruster	electric Vetus 95 kgf with tunnel completely new built in 2011
Propeller type	folding Flex-O-Fold (new 2011)



BOWMAN 49 KETCH

Propeller blades	3
Propeller shaft material	stainless steel + bearings all new 2011
Shaft lubrication	water Volvo seal (new 2011)
Manual bilge pump	yes
Electric bilge pump	yes
Electrical installation	12V/220V
Start battery	1x VMF 105Ah (new 2022)
Service battery	3x Mastervolt SlimLine AGM 150Ah (new 2022)
Battery monitor	Mastervolt
Battery charger	Mastervolt Chargemaster 12/50 (new 2011)
Inverter	For charging handheld VHF
Wind generator	Duo gen water/wind generator (new 2015)
Solar panel	Victron
Diode battery combiners	yes
Shorepower	with cable
Extra info	Dubble fuel waterfilter for engine
Extra info	Engine service 01-2023

NAVIGATION

Compass	Plastimo (new 2017)
Forw. looking depth sounder	Raymarine ST60 and Interphasen twinscope (new 2009)
Log	Raymarine ST60
Windset	Raymarine ST60 (new 2013)
Repeater	Raymarine ST60 multi (charttable)
VHF	Navman 7110
VHF handheld	Icom M91 (new 2013)
Autopilot	Raymarine ST7000+
Rudder angle indicator	On autopilot
Radar	Raymarine (new 2008)
GPS	Garmin 152H (new 2011)
Radar/GPS/plotter	Raymarine C80 (new 2008)



BOWMAN 49 KETCH

Electronis chart(s)	yes
AIS transponder	Raymarine AIS 650 - class B (new 2016)
EPIRB	Rescue Me (new 2017)
Navigation lights	yes

EQUIPMENT

Sprayhood	(new 2019)
Cockpit cover	For entrance only (new 2019)
Cockpit cushions	Loose cushions
Cockpit table	Loose table
Boarding ladder	stainless steel Detachable in aft. deck locker
Anchor	CQR Plough
Anchor chain	yes
Windlass	electrical Lofrans Tigres (new 08-2023)
Capstan	On windlass
Dinghy	rigid hull Custom made wood
Outboard support	yes
Sea railing	wire
Railing side opening gates	2x
Pushpit	yes
Pulpit	yes
Life raft	container Safeguard
Life raft (pers)	6 (survey until 03/2024)
Lifebuoy	yes
Danbuoy	yes
Radar reflector	yes
Fenders	yes
Mooring lines	yes
Radio-cd player	Sony
Speakers in salon	Pioneer
Clock - barometer	yes



BOWMAN 49 KETCH

Fire extinguisher	yes
Extra info	Cover for helmposition (new 2019)

RIGGING

Rigging	ketch-cutter
Standing rigging	wire (new front stay in combination with new genua furler in 2021)
Material mast	aluminium
Keel stepped mast	yes
Mainsail	Lion Sails 39,5 m2 (new 2012)
Mainsail cover	Lion Sails (new 2013)
Cutterstay	With Jib
Mizzen	Lion Sails 18,5 m2 (new 2012)
Mizzen sailcover	Lion Sails (new 2013)
Genoa	Lion Sails 64,8 m2 (new 2012)
Genoa furler	Harken MKIV unit 3 (new 2021)
Cutter furler	yes
Spinnaker	With squeezer
Reefing System	slabreefing
Boomvang	mechanical
Primary sheet winch	2x Lewmar 55 st
Secondary sheet winch	1x Lewmar 46 st
Genoa sheetwinches	2x Lewmar 66 st
Halyard winches	2x lewmar 48 st
Reefing winch	2x lewmar 44
Multifunctional winches	7x
Spi-pole	carbon
Extra info	Walder boom brake (new 2020)
Extra info	Inner forestay and runners



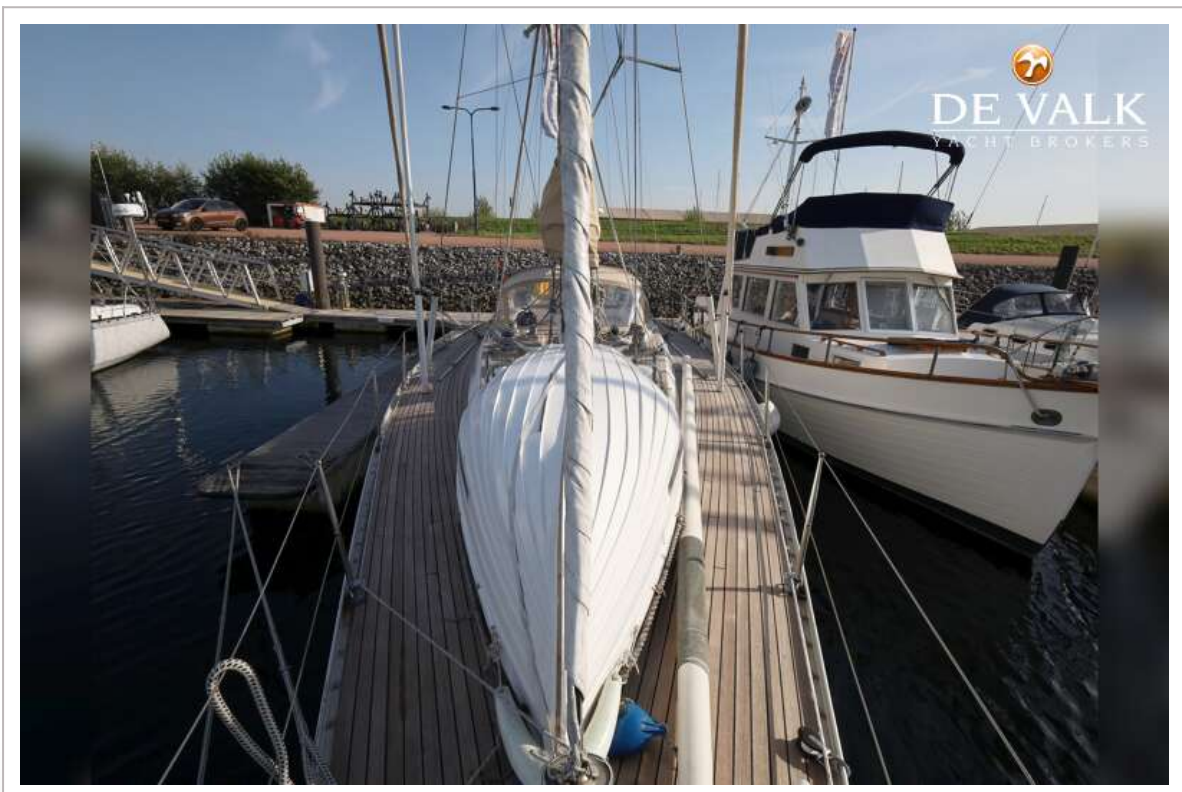
BOWMAN 49 KETCH



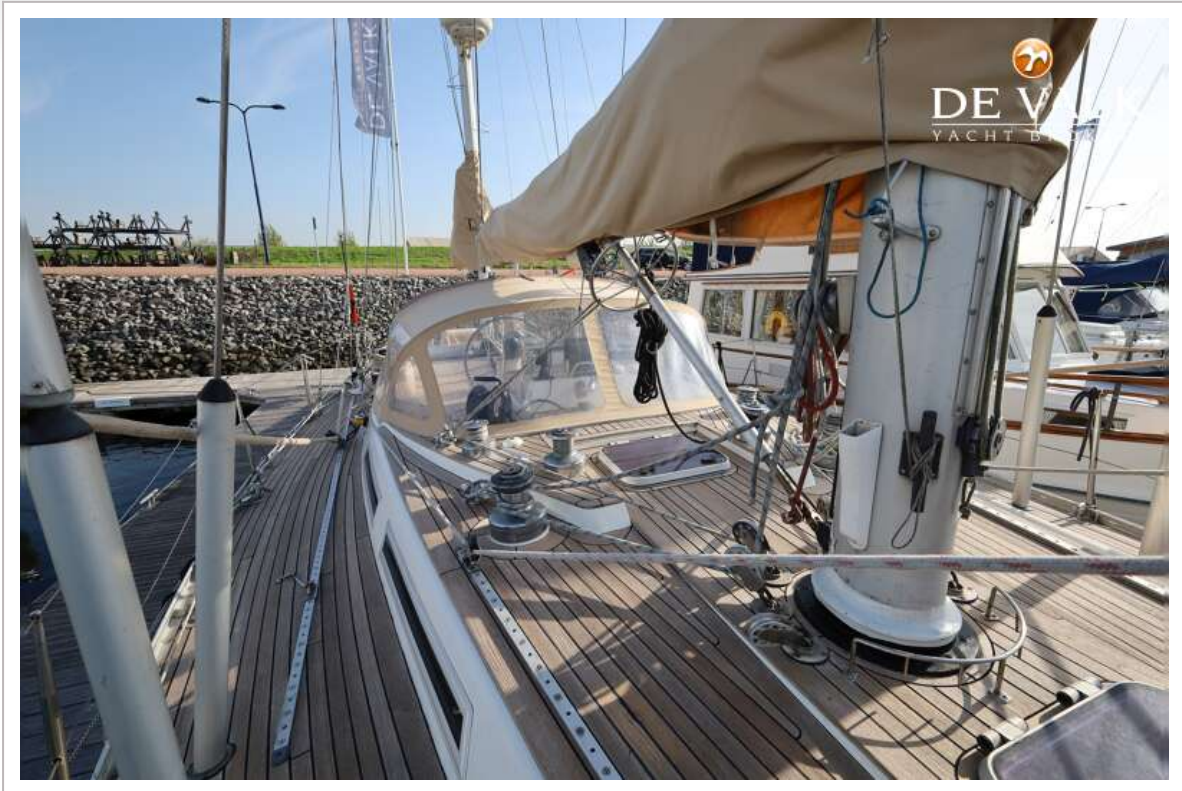
BOWMAN 49 KETCH



BOWMAN 49 KETCH



BOWMAN 49 KETCH



BOWMAN 49 KETCH



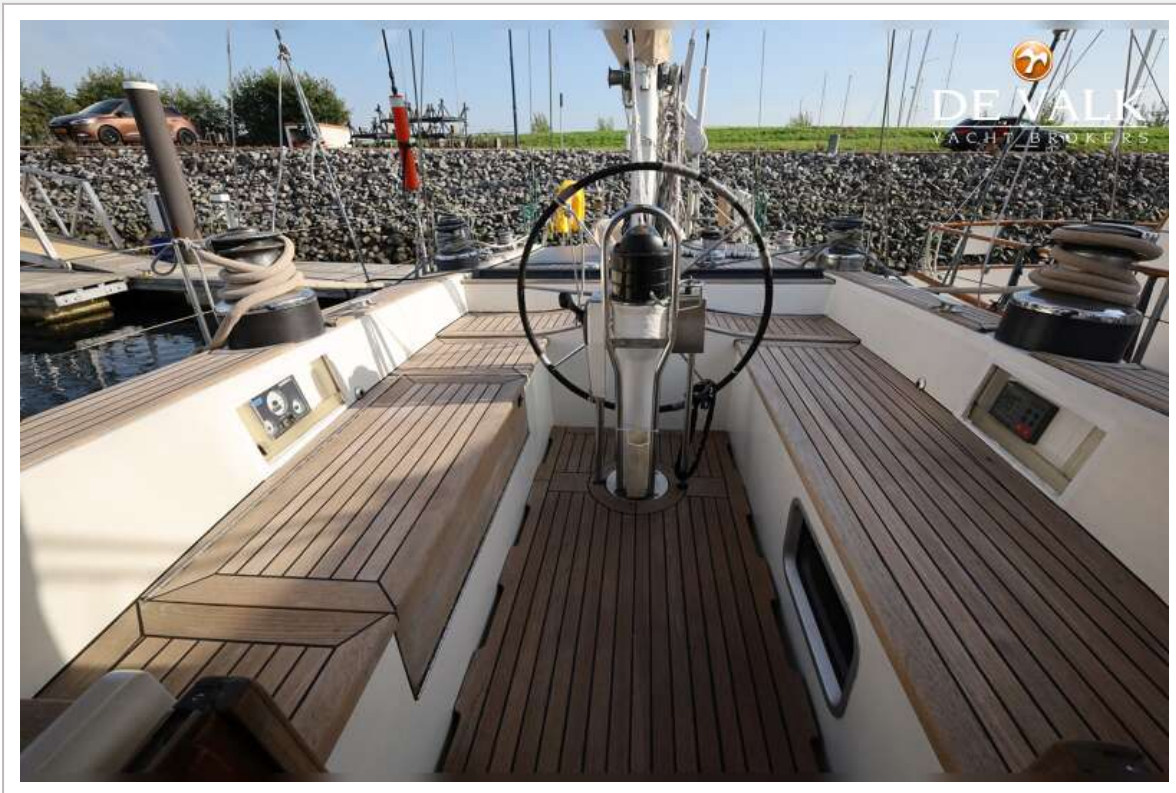
BOWMAN 49 KETCH



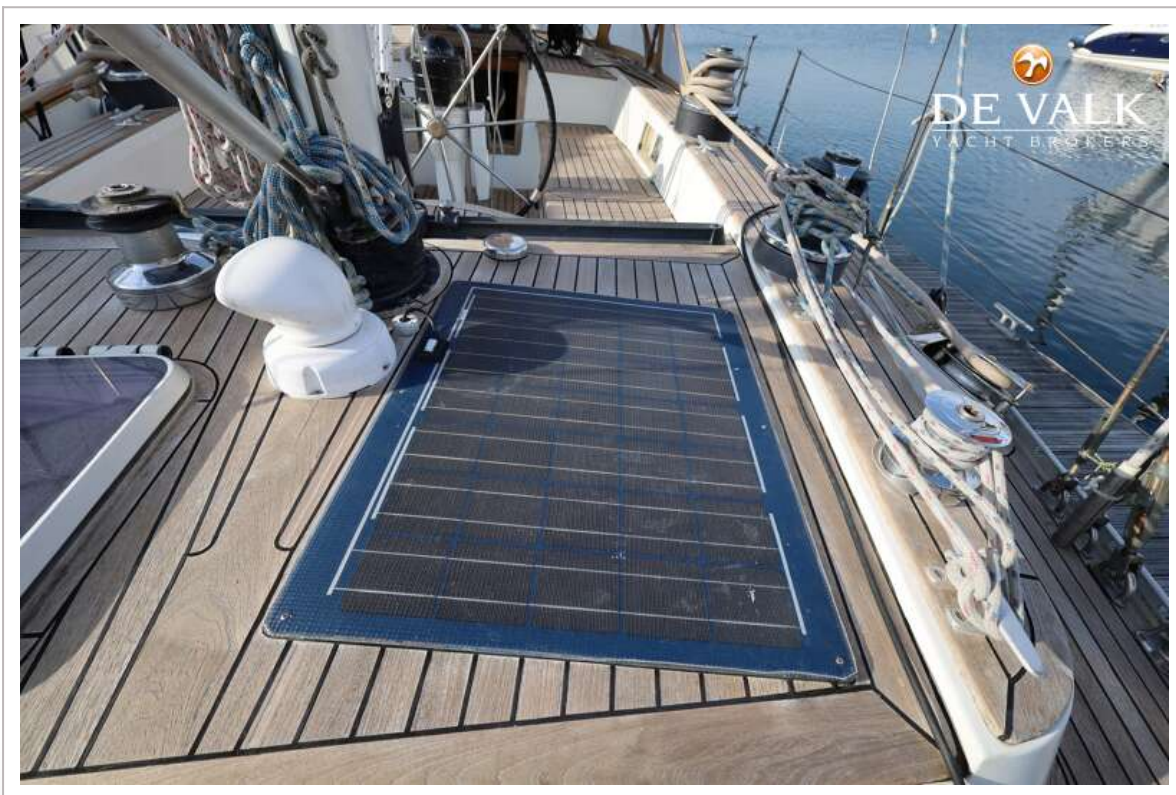
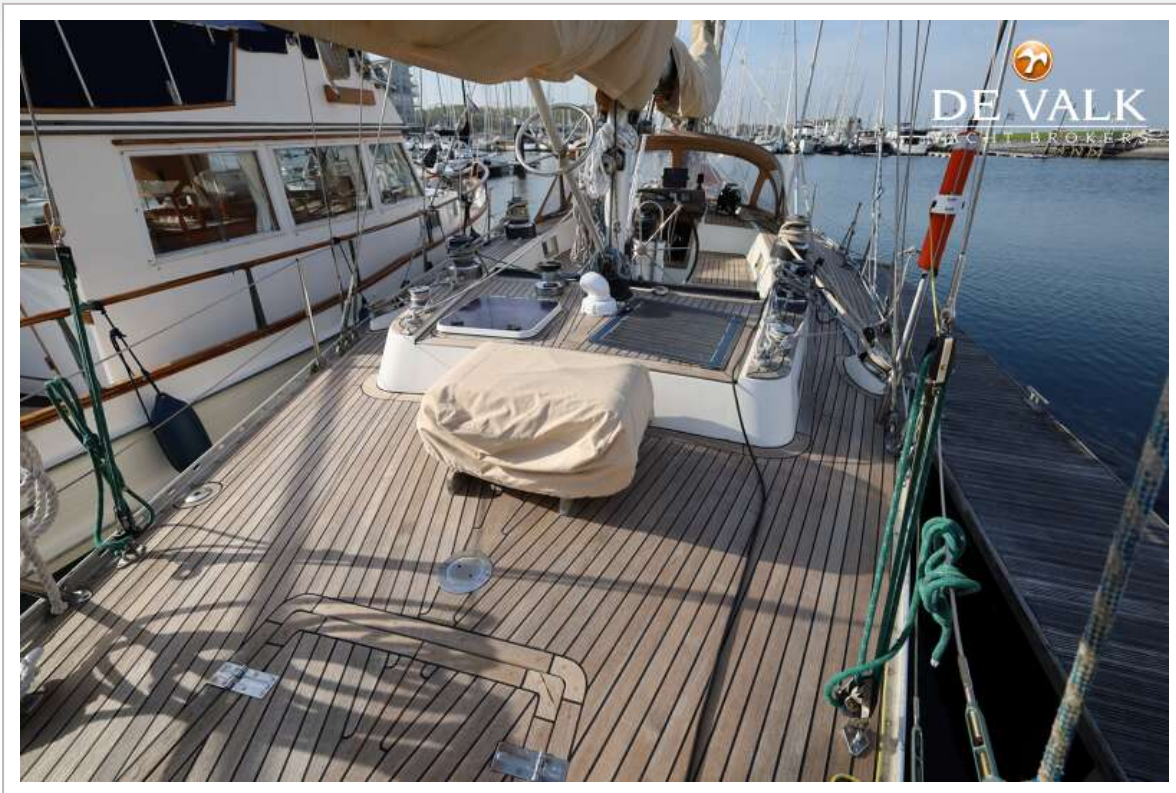
BOWMAN 49 KETCH



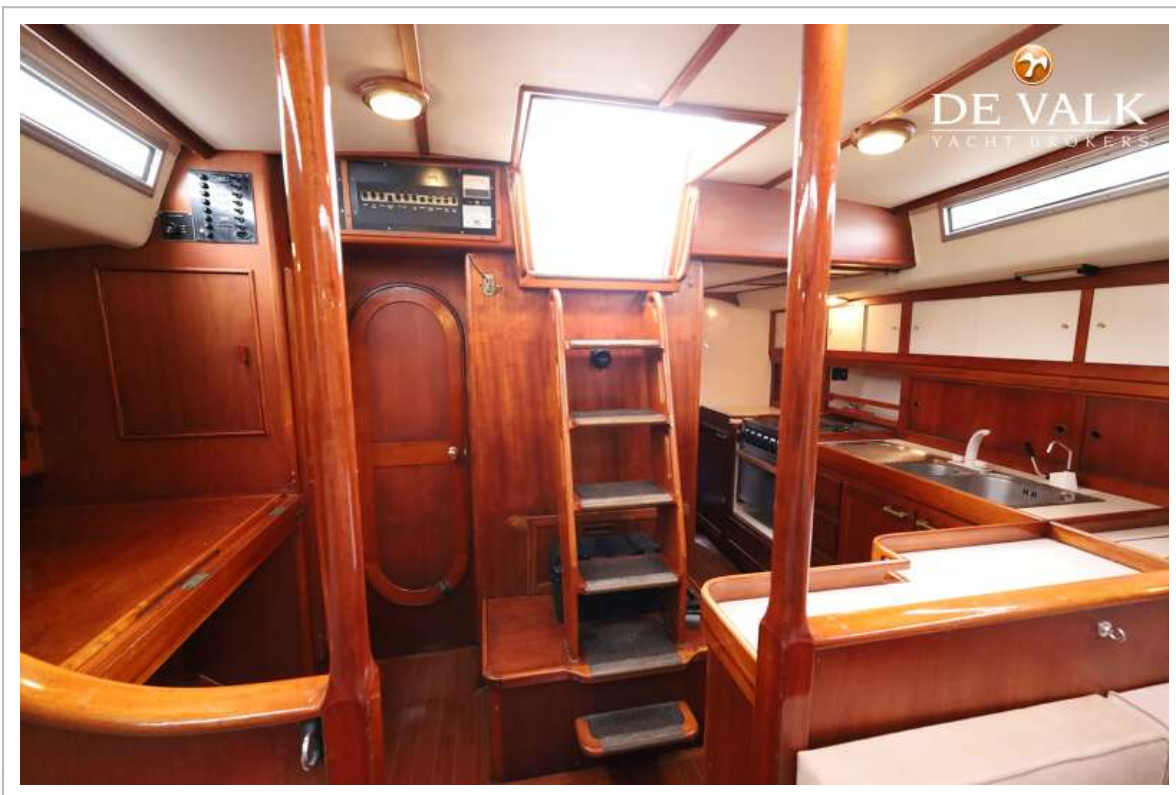
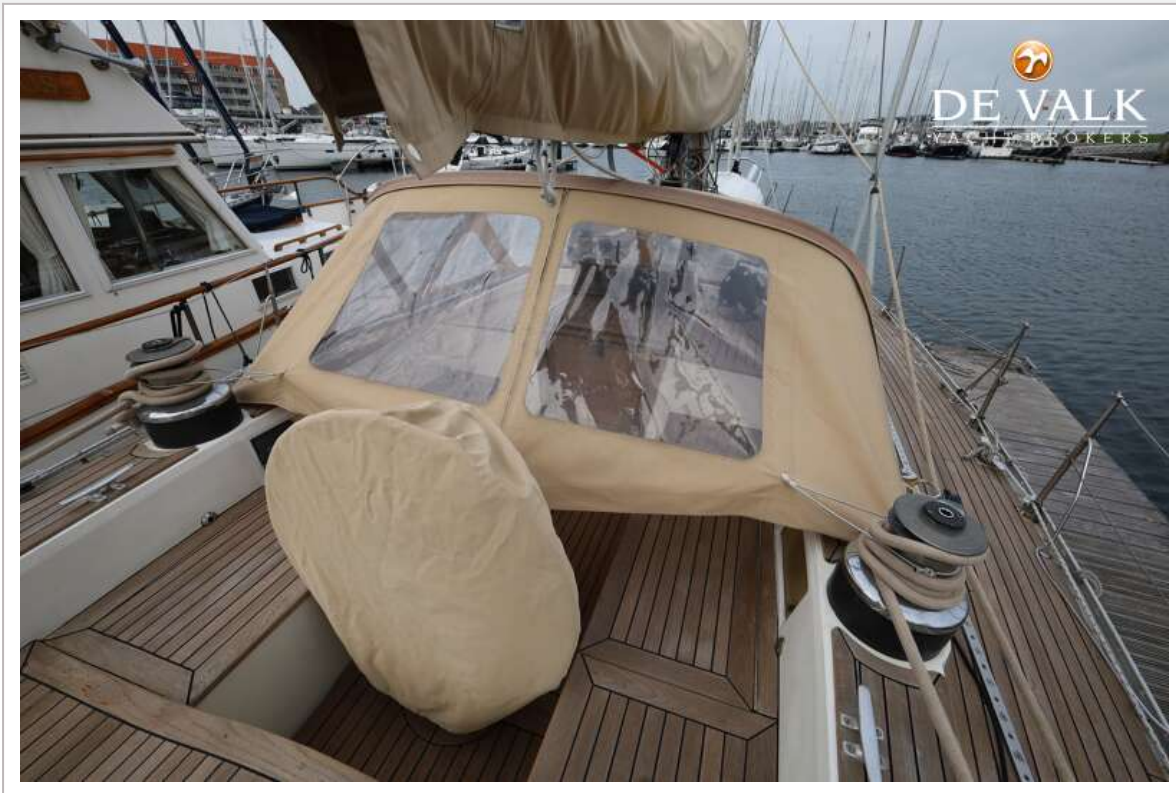
BOWMAN 49 KETCH



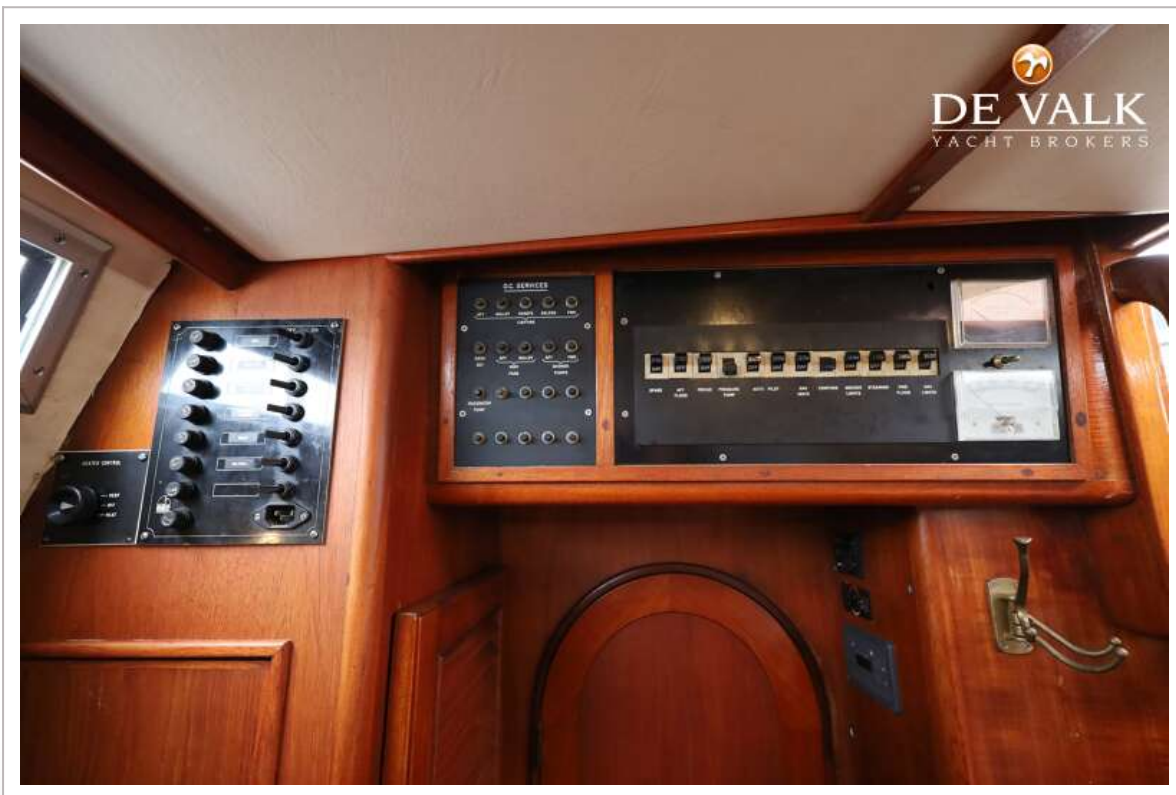
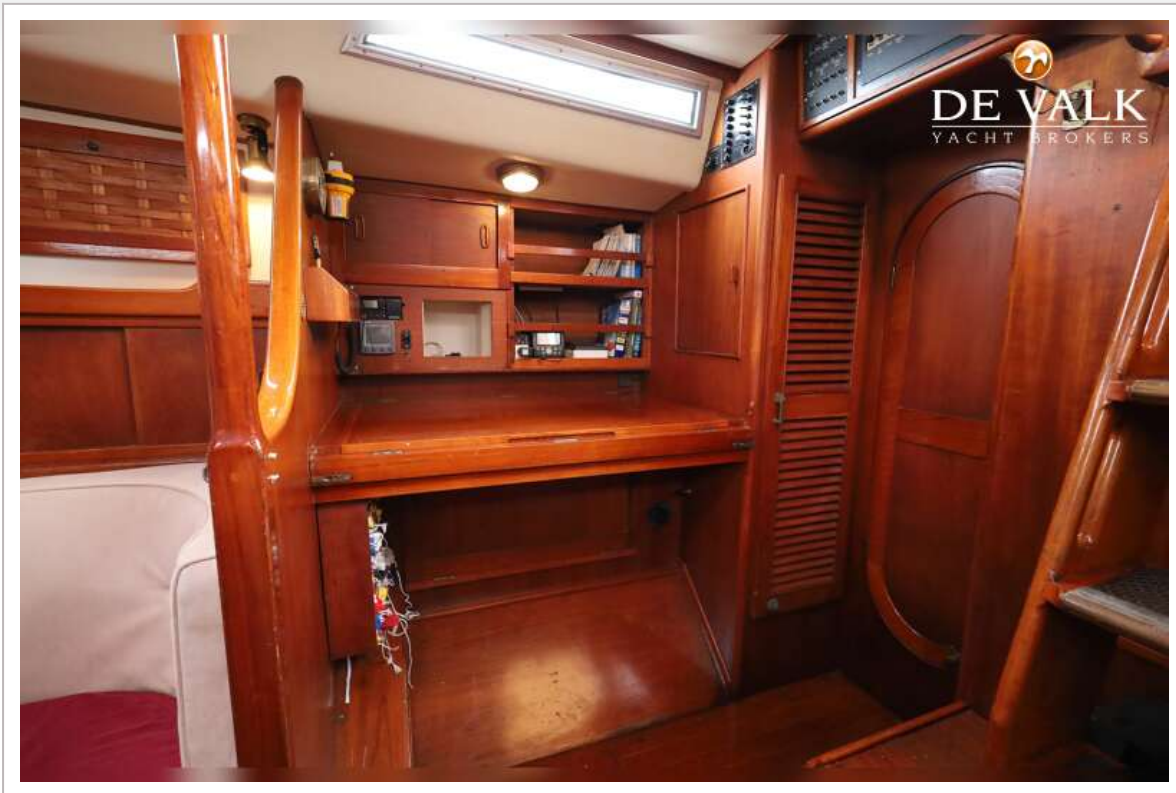
BOWMAN 49 KETCH



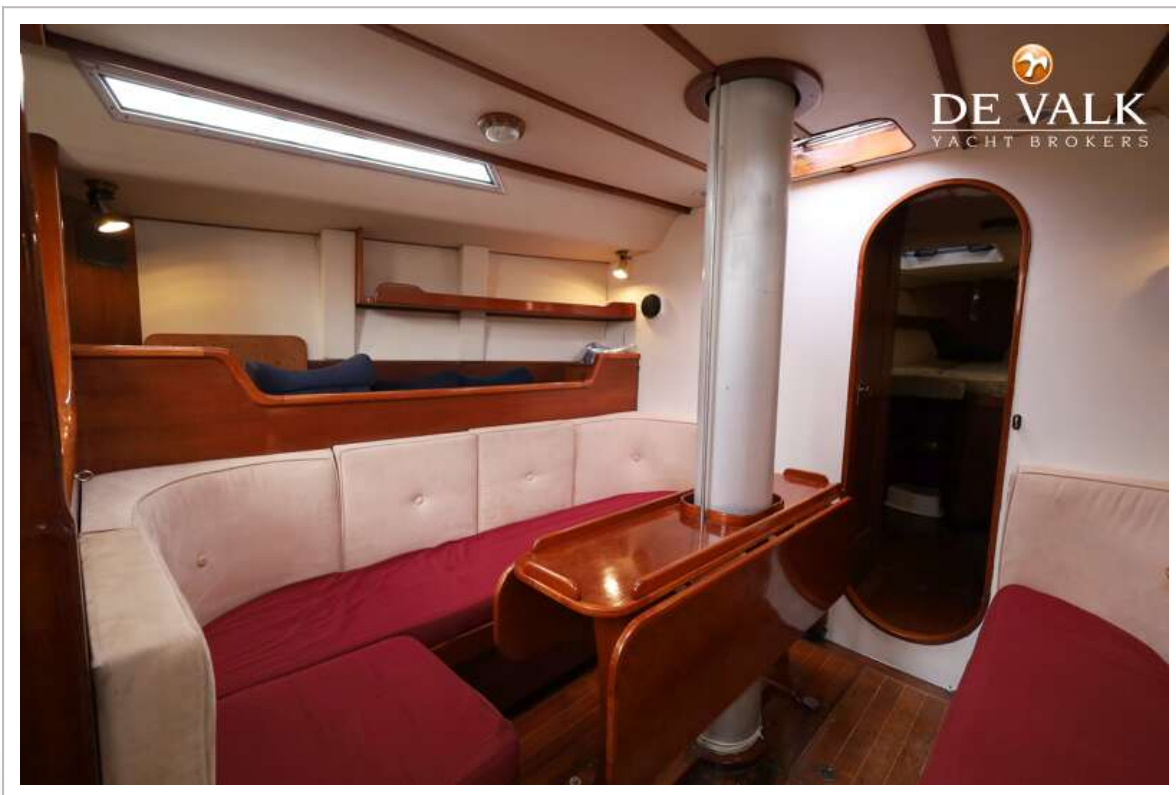
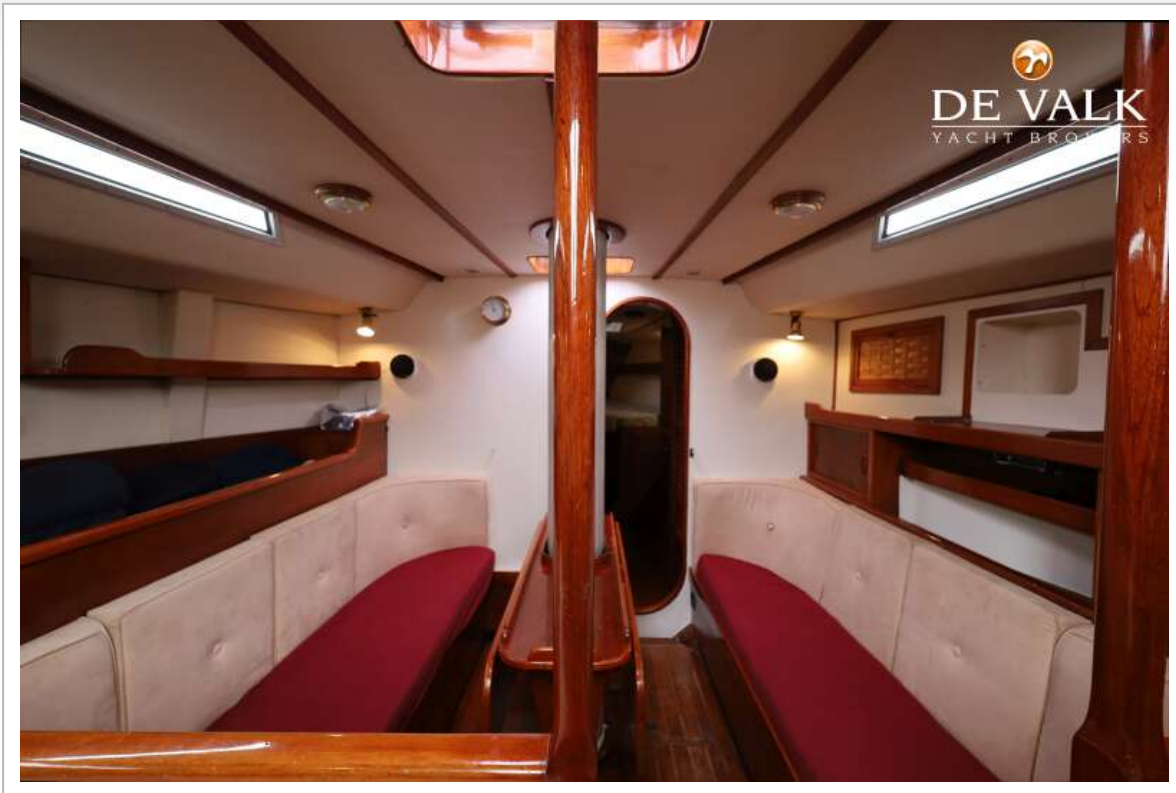
BOWMAN 49 KETCH



BOWMAN 49 KETCH



BOWMAN 49 KETCH



BOWMAN 49 KETCH



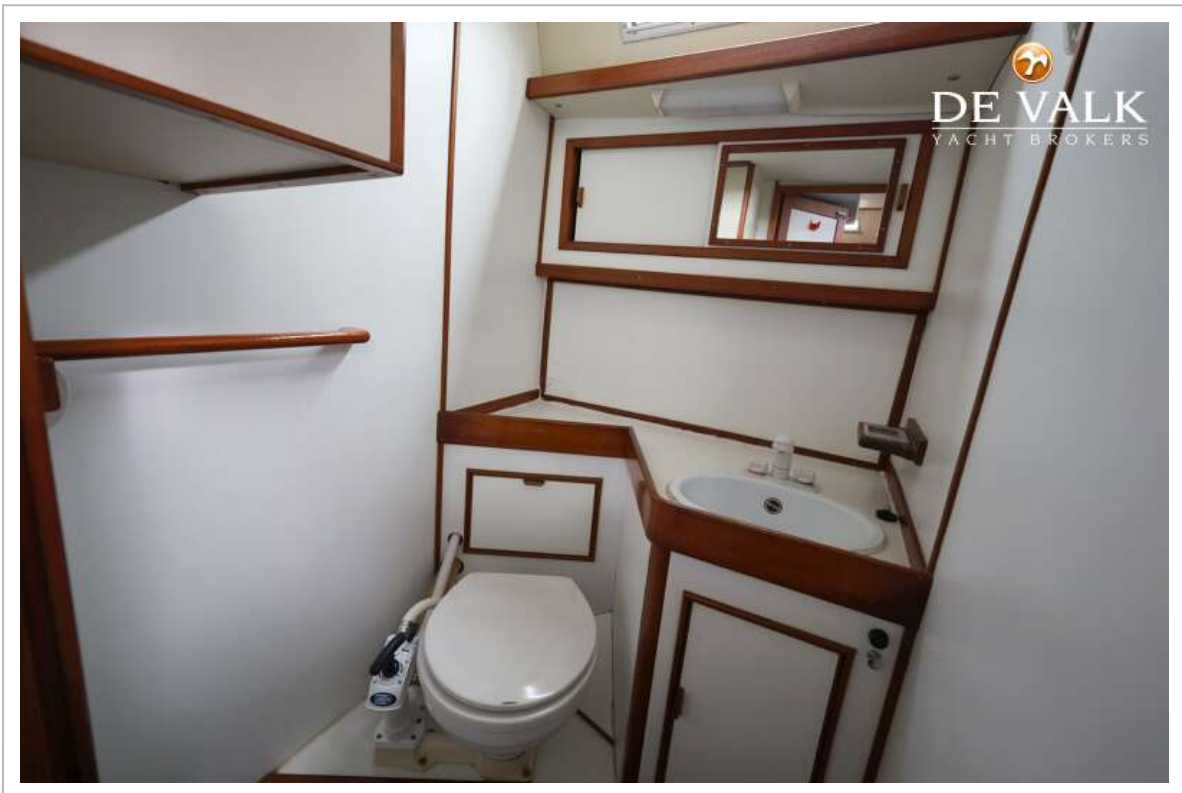
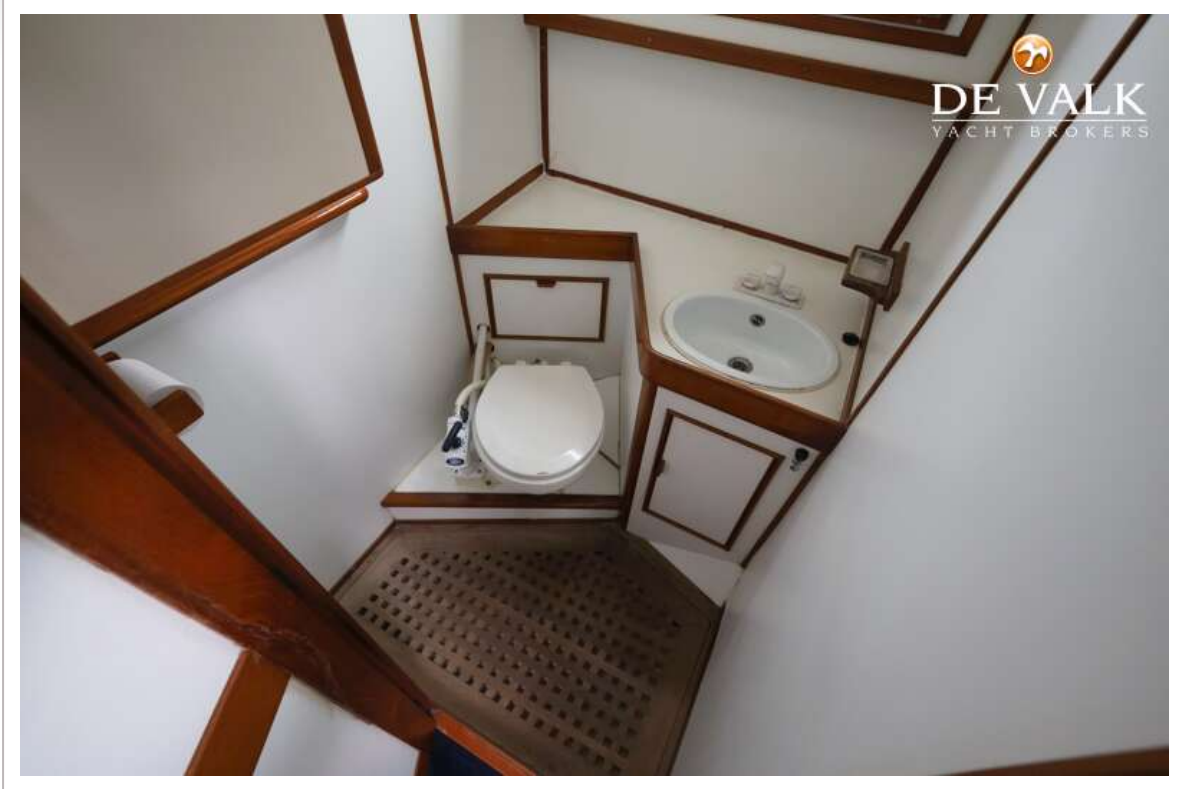
BOWMAN 49 KETCH



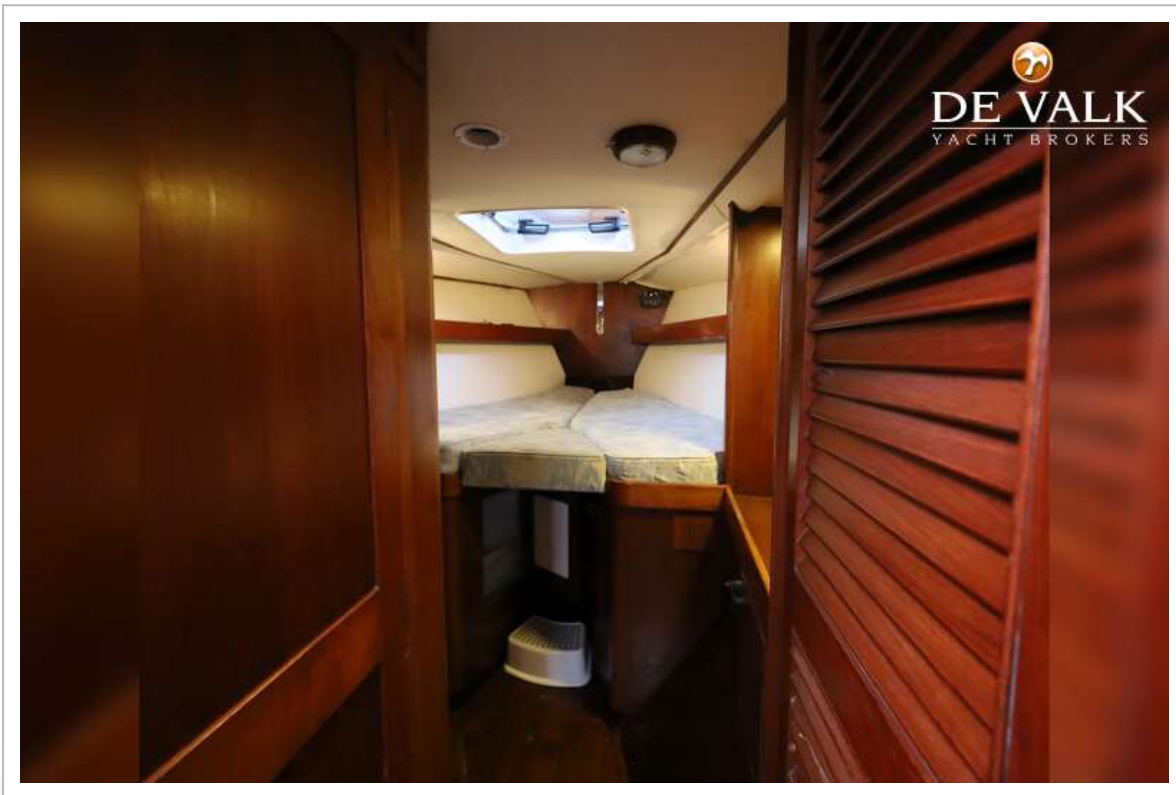
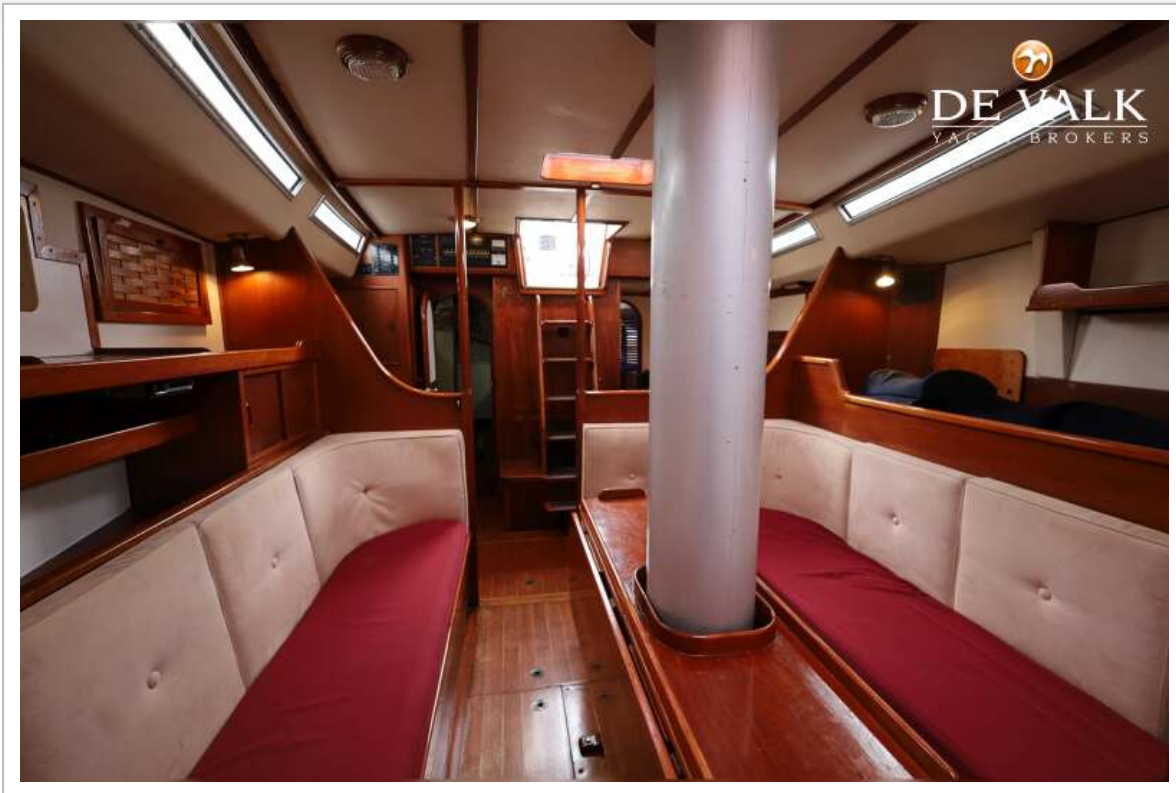
BOWMAN 49 KETCH



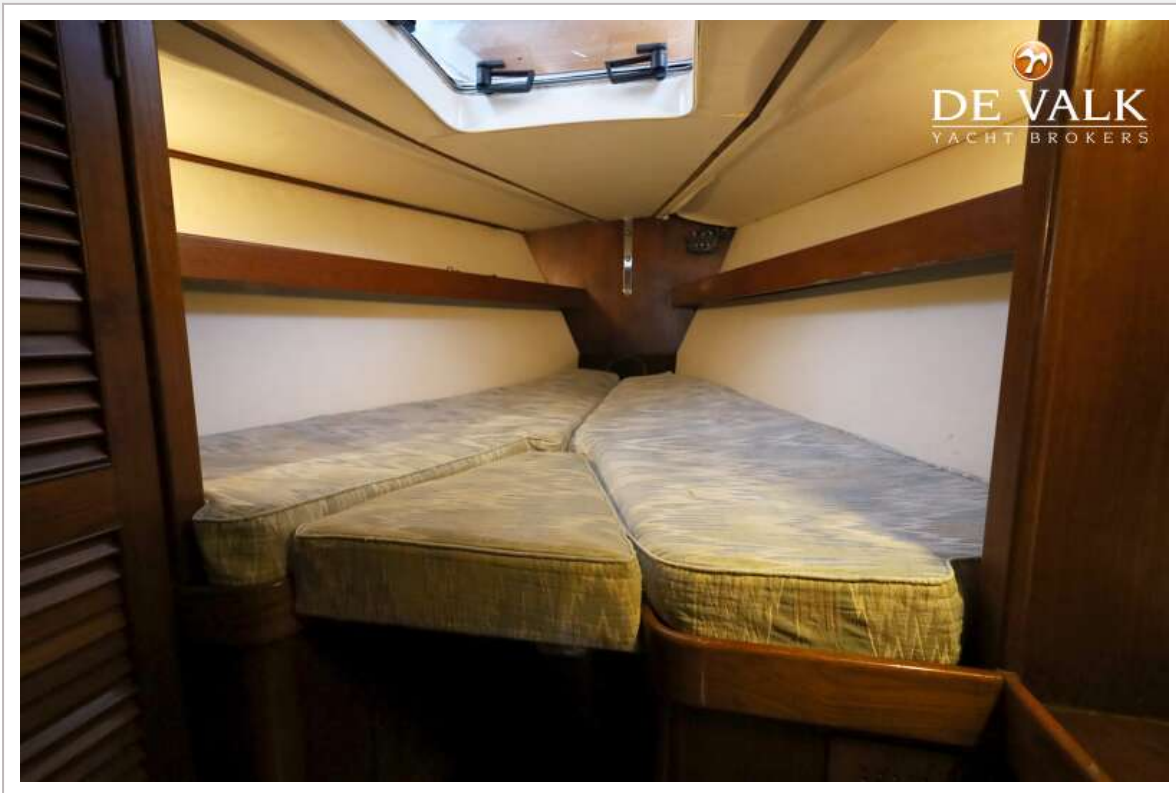
BOWMAN 49 KETCH



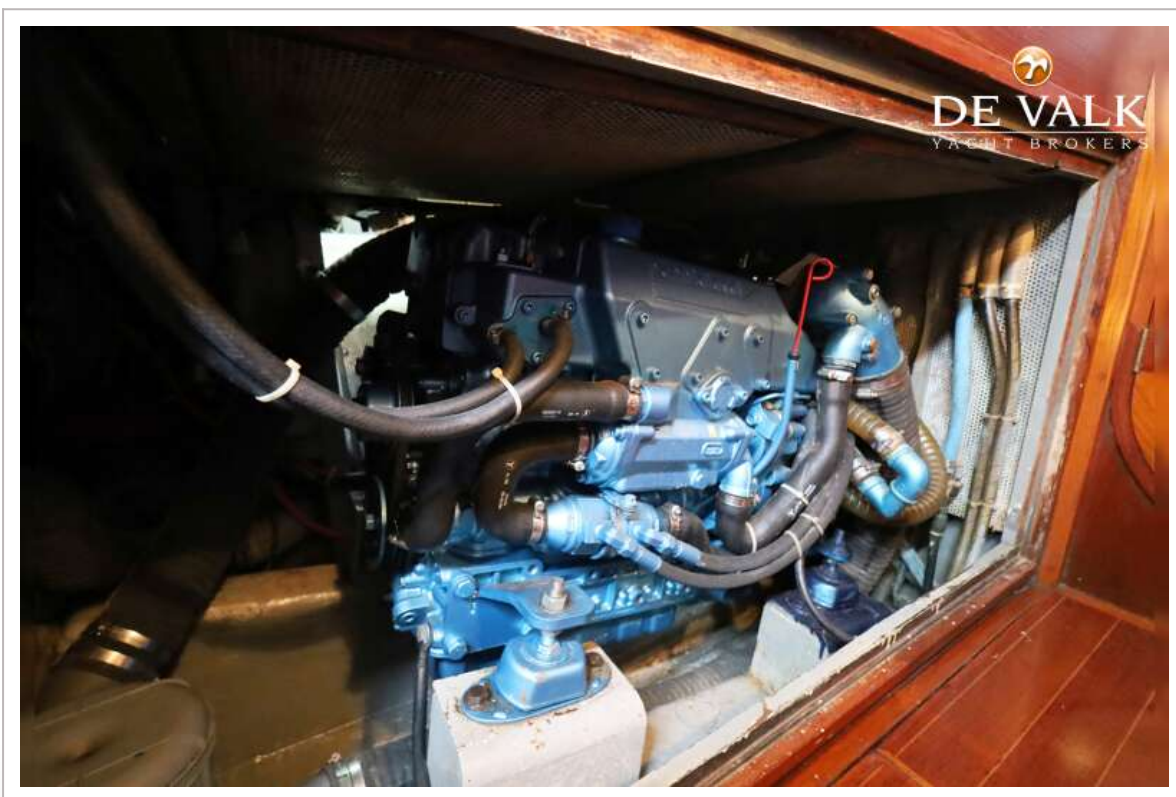
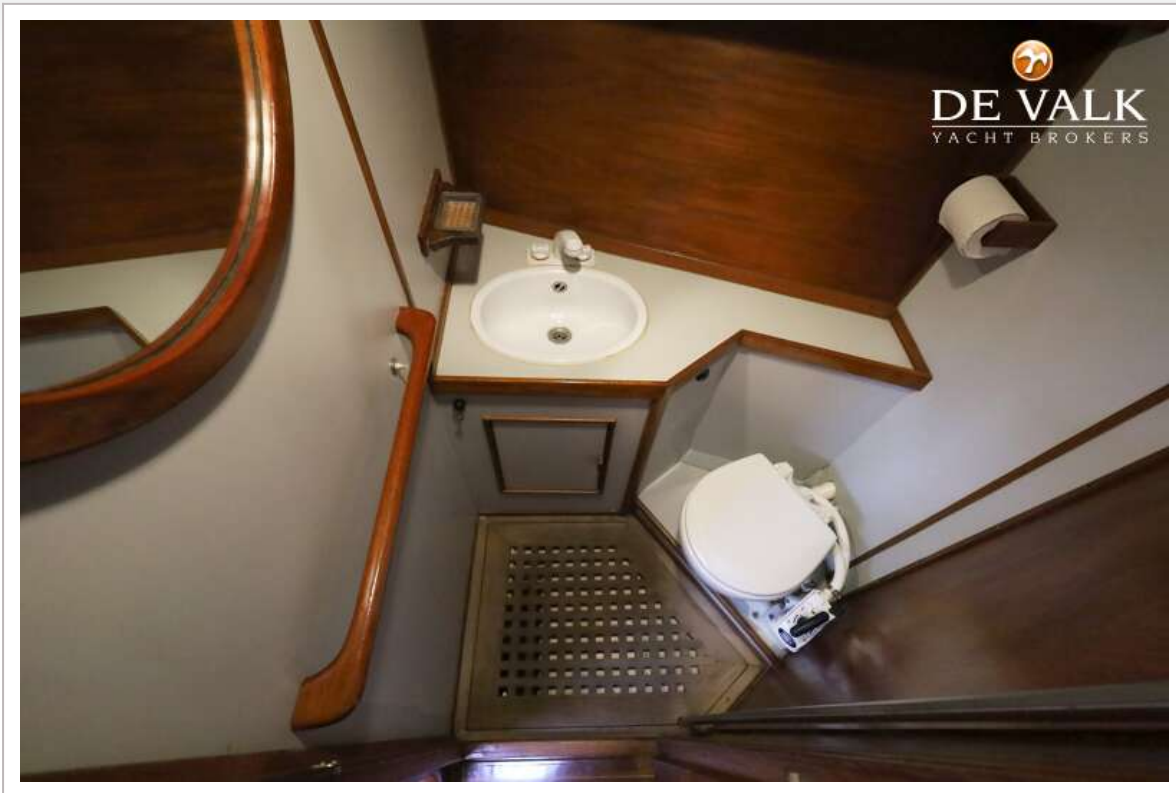
BOWMAN 49 KETCH



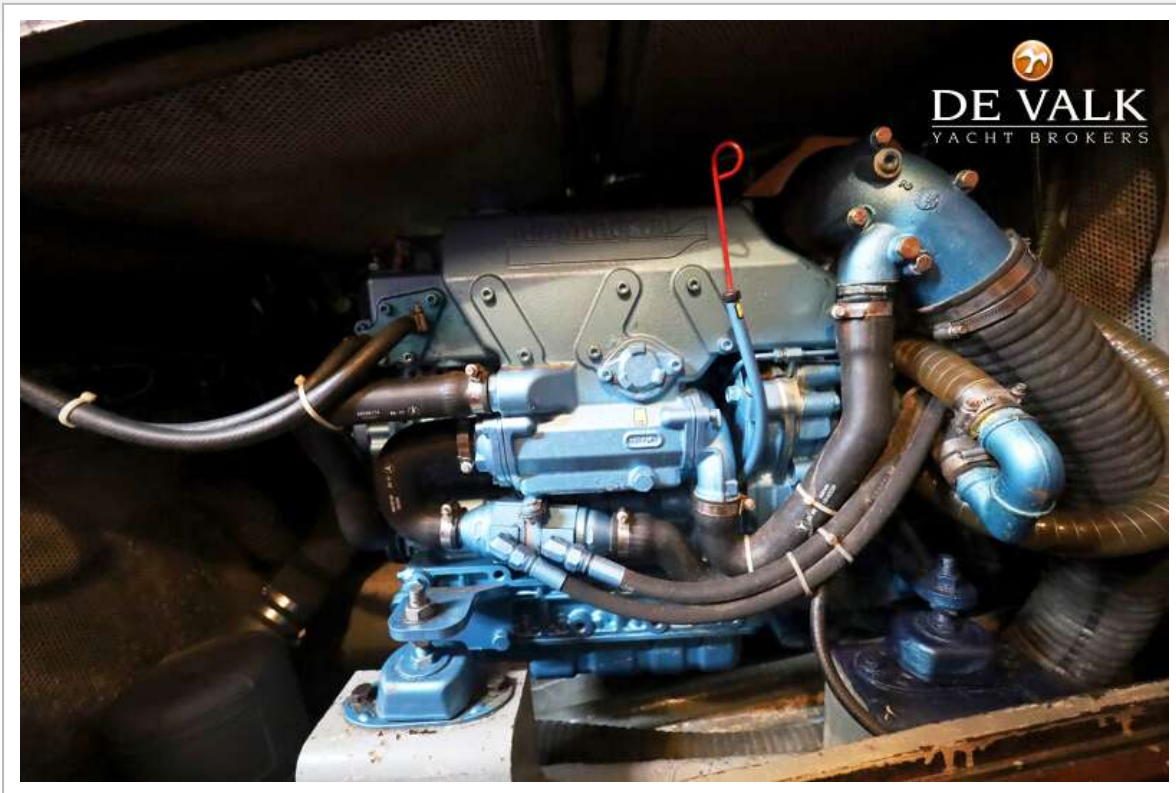
BOWMAN 49 KETCH



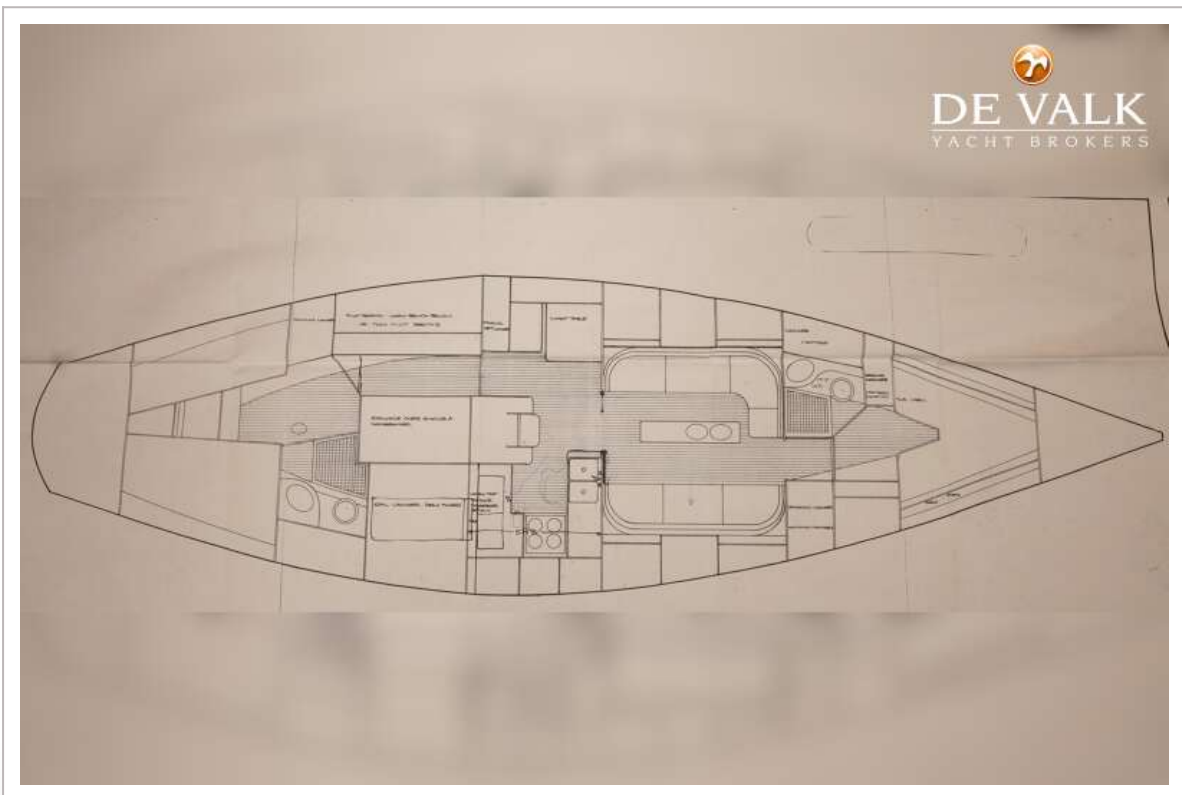
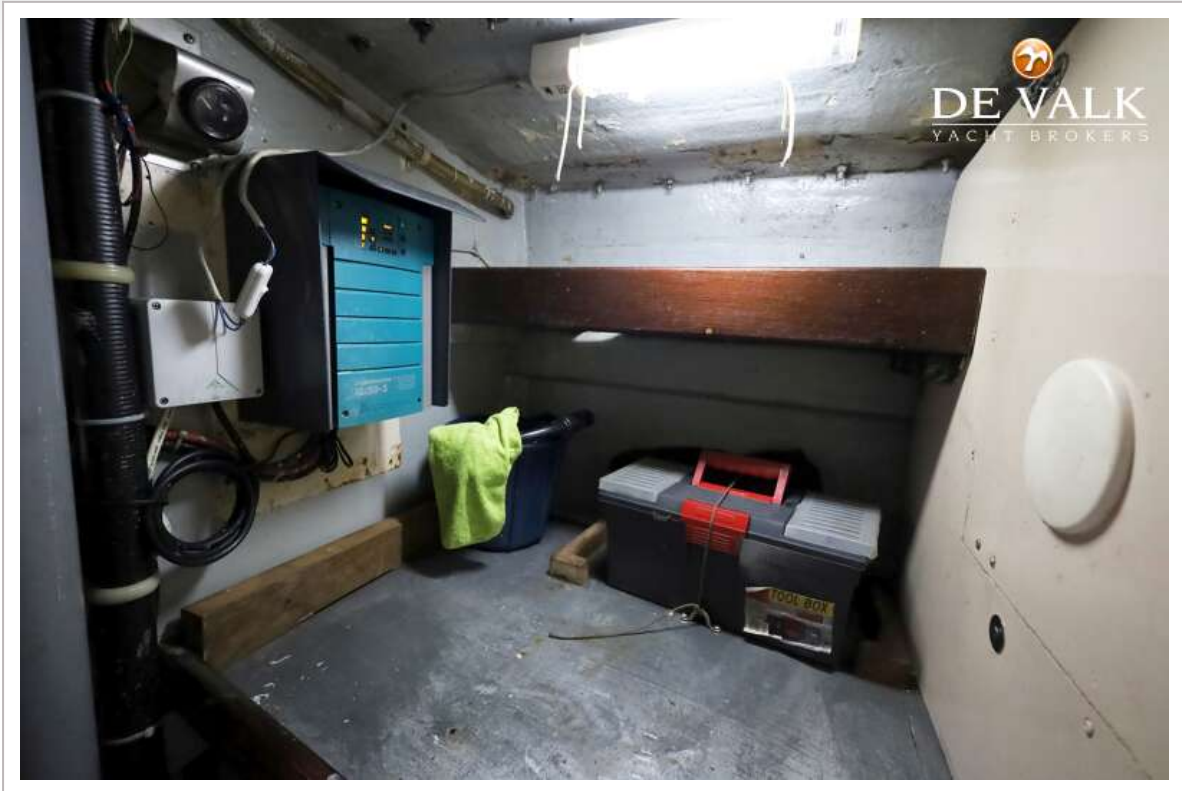
BOWMAN 49 KETCH



BOWMAN 49 KETCH



BOWMAN 49 KETCH



BOWMAN 49 KETCH

