



DE VALK
YACHT BROKERS



MONTE FINO 78 FLY



DE VALK
YACHT BROKERS

MONTE FINO 78 FLY

BROKER'S COMMENTS

INCOME PRODUCING Montefino fly 78 is being marketed as guest suites through Booking.com and is generating significant income. With a full beam Master cabin, VIP guest suite, Double cabin and Twin Cabin plus crew quarters with head and shower. Each cabin contains their own en suite with the fixtures having been recently upgraded. LED lighting throughout. Plenty of room in the saloon and aft deck with a bar area and multiple seating areas, along with sun deck on the fly bridge and further seating under a fixed hard top. Bathing platform and further sundeck at the bow. Central Agent

Mark Damen

SPECIFICATIONS

Dimensions	23.80 x 5.65 x 2.80 (m)	Builder	KSE
Built	1991	Cabins	4
Material	GRP	Berths	11
Engine(s)	2 x Caterpillar 3412E-DITA diesel	Hp/Kw	2 x 1,015.00 (hp), 746.00 (kw)
Asking price	€ 225.000 (VAT Paid)	Lying	at sales office

CONTACT

Sales office	De Valk Costa del Sol	Telephone	+34 951120059
Address	Southern Spain Region 29660 Malaga ES	E-mail	costadelsol@devalk.nl

DISCLAIMER

These particulars are given in good faith as supplied but cannot be guaranteed.



GENERAL

Model	MONTE FINO 78 FLY
Type	motor yacht
LOA (m)	23,80
Beam (m)	5,65
Draft (m)	2,80
Headroom (m)	2,00
Year built	1991
Builder	KSE
Country	Taiwan
Gross tonnage	65,06
Net tonnage	65,06
Hull material	GRP
Hull colour	white
Deck finish	teak
Antifouling (year)	2020
Window frame	stainless steel
Flybridge	yes
Flybridge cover	Hard Top
Flybridge suncover	Bimini
Radar arch	yes
Fuel tank (litre)	stainless steel 4000
Fuel tank 2 (litre)	stainless steel 4000
Level indicator (fuel tank)	yes
Freshwater tank (litre)	stainless steel 4 x 500
Level indicator (freshwater)	yes
Blackwater tank (litre)	stainless steel 200
Level indicator (blackwater)	yes
Blackwater tank extraction	deck extraction + pump
Wheel steering	hydraulic
Inside helm position	yes



Flybridge helm position yes

ACCOMMODATION

Cabins	4
Berths	11
Crew cabin	1
Crew berths	2/3
Floor	carpet
Aft deck	yes
Saloon	yes
Headroom saloon (m)	2
Air-conditioning	reverse cycle airco
Dinette	yes
Sliding door to aft deck	Bi Sliding Doors
Galley	yes
Countertop	corian
Sink	stainless steel
Cooker	induction Novy in touch tri-induction hob
Oven	Atag electric oven
Extractor	yes
Fridge	yes
Freezer	yes
Wine cooler	X 2
Hot water system	220V + engine
Water pressure system	electrical
Dishwasher	Miele dishwasher
Hot water tap	yes
Coffee maker	yes
Crockery	yes
Owners cabin	double bed
Bed length (m)	2



Wardrobe	hanging/drawers/shelves Various
Bathroom	en suite
Toilet	en suite
Toilet system	electric
Wash basin	in the bathroom His and Hers Sinks
Shower	en suite Twin Rain shower & Hand Held Shower above bath
Bath tub	en suite Double Bath
Extra info	Heated Towel Rail
Guest cabin 1	double bed
Bed length (m)	2
Wardrobe	hanging and drawers
Bathroom	en suite
Toilet	en suite
Toilet system	electric
Wash basin	in the bathroom His and Hers Hand Basin
Shower	en suite Rain Shower and Standard Shower Attachment
Extra info	Heated Towel Rail
Guest cabin 2	double bed
Bed length (m)	2
Wardrobe	drawers
Bathroom	en suite
Toilet	en suite
Toilet system	electric
Wash basin	in the bathroom
Shower	en suite
Extra info	Heated Towel Rail
Guest cabin 3	twin single
Bed length (m)	2
Wardrobe	hanging and shelves
Bathroom	yes
Toilet	en suite
Toilet system	electric



Wash basin	in the bathroom
Shower	en suite
Extra info	Heated Towel Rail
Crew cabin(s)	1
Bathroom (crew)	yes
Toilet (crew)	yes
Toilet system	electric
Wash basin	in the bathroom
Shower (crew)	yes
Washing machine/dryer combi	yes
Flybridge	yes
Wet bar	yes

MACHINERY

No of engines	2
Make	Caterpillar
Type	3412E-DITA
HP	1015
kW	746
Fuel	diesel
Year installed	1992
Year of overhaul	Port Engine Installed 2002
Maximum speed (kn)	20
Cruising speed (kn)	15
Consumption (l/hr)	100
Engine hours	2286
Engine cooling system	seawater
Drive	shaft
Engine controls	hydraulic
Gearbox	hydraulic
Bowthruster	electric



Propeller type	fixed
Propeller blades	Bronze
Propeller shaft material	stainless steel
Shaft lubrication	grease
Electric bilge pump	X 5
Electrical installation	220V/24V
Generator	wet exhaust
Running hours generator	708
Batteries	11
Start battery	2
Service battery	6
Generator battery	1
Windlass battery	2
Battery monitor	yes
Battery charger	yes
Inverter	yes
Solar panel	2700 Watts
Shorepower	with cable
Trimtabs	yes

NAVIGATION

Electric compass	yes
Depth sounder/log	yes
Repeater	yes
VHF	yes
Autopilot	yes
Rudder angle indicator	yes
Radar	Furuno
Plotter/GPS	yes
Electronis chart(s)	yes
AIS transceiver	yes



Navigation lights	yes
Searchlight	Fwd and Aft

EQUIPMENT

Fixed windscreen	yes
Cockpit cushions	yes
Cockpit table	yes
Cockpit chairs	yes
Bathing platform	yes
Boarding ladder	aluminum
Gangway	yes
Deck shower	yes
Anchor	yes
Anchor 2	yes
Windlass	electrical
Deck crane	hydraulic
Sea railing	yes
Pulpit	yes
Lifebuoy	yes
Wiper	yes
Horn	air pressure
Binocular	yes
Fenders	yes
Mooring lines	yes
TV	yes
Satellite	yes
Radio-cd player	yes
DVD player	yes
Cockpit speakers	yes
Speakers in salon	yes
Speakers in cabin	yes

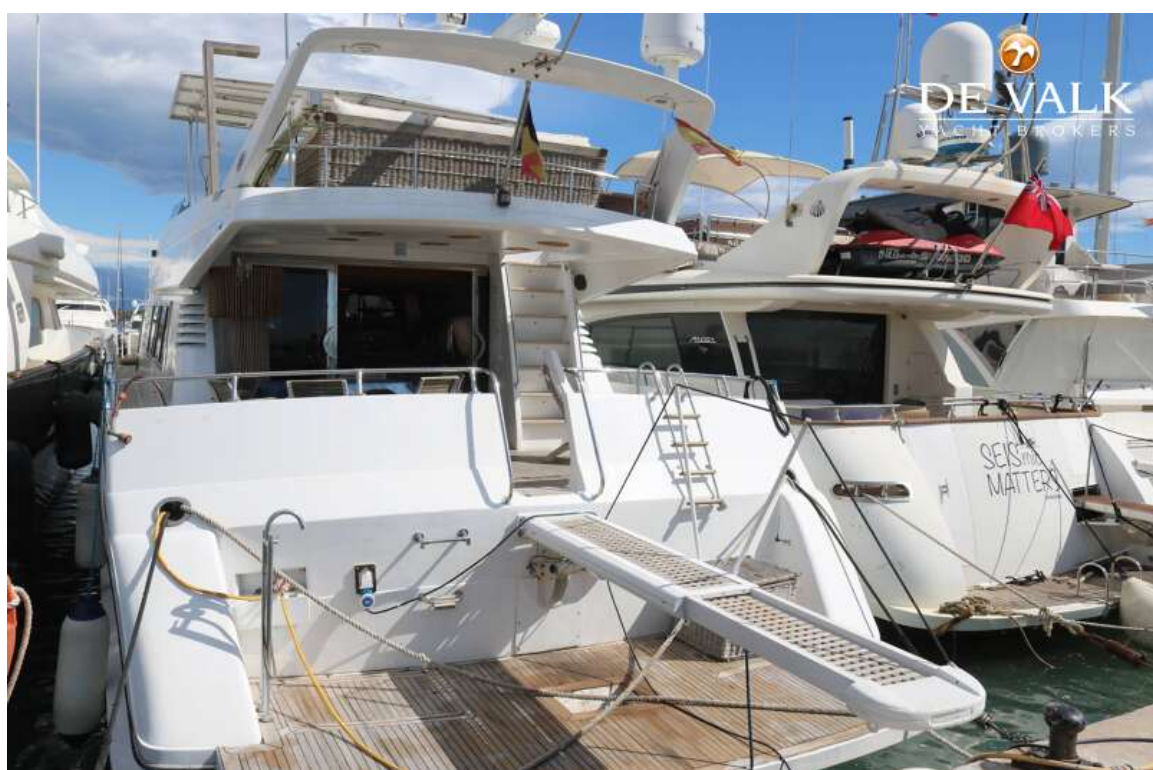




MONTE FINO 78 FLY



MONTE FINO 78 FLY



MONTE FINO 78 FLY



MONTE FINO 78 FLY





MONTE FINO 78 FLY

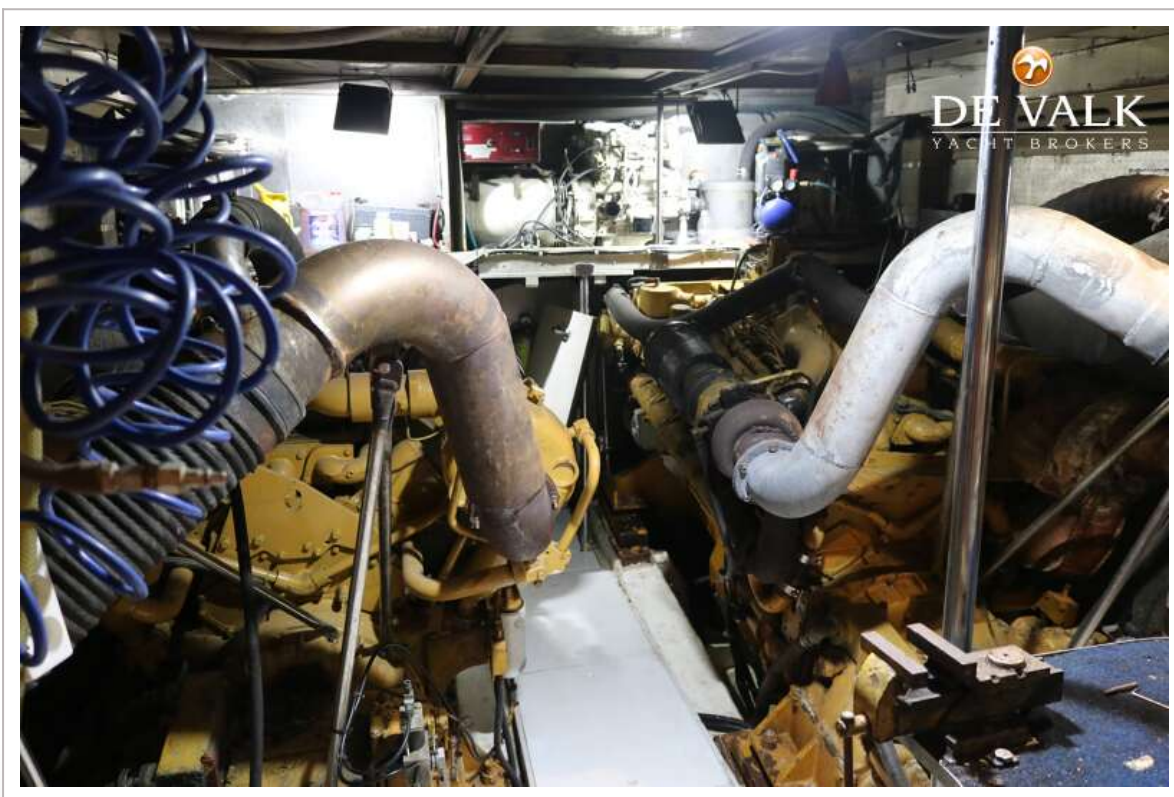


MONTE FINO 78 FLY



MONTE FINO 78 FLY

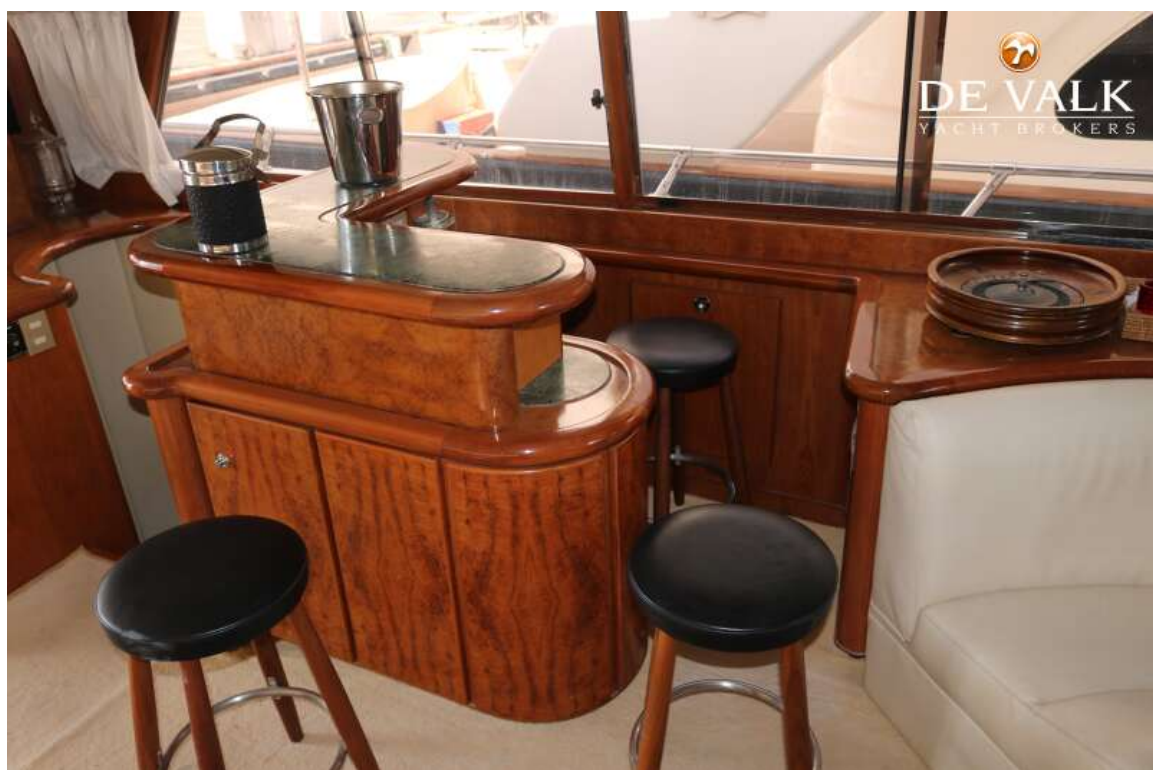




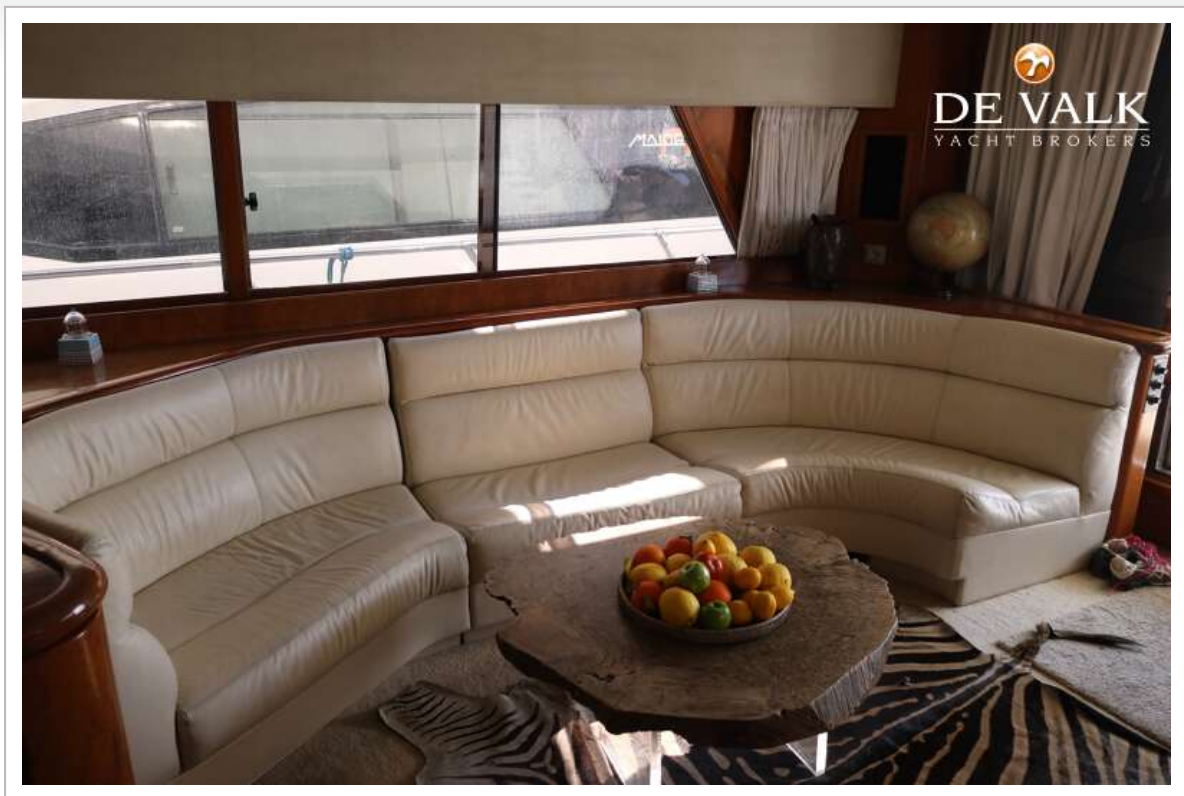
MONTE FINO 78 FLY



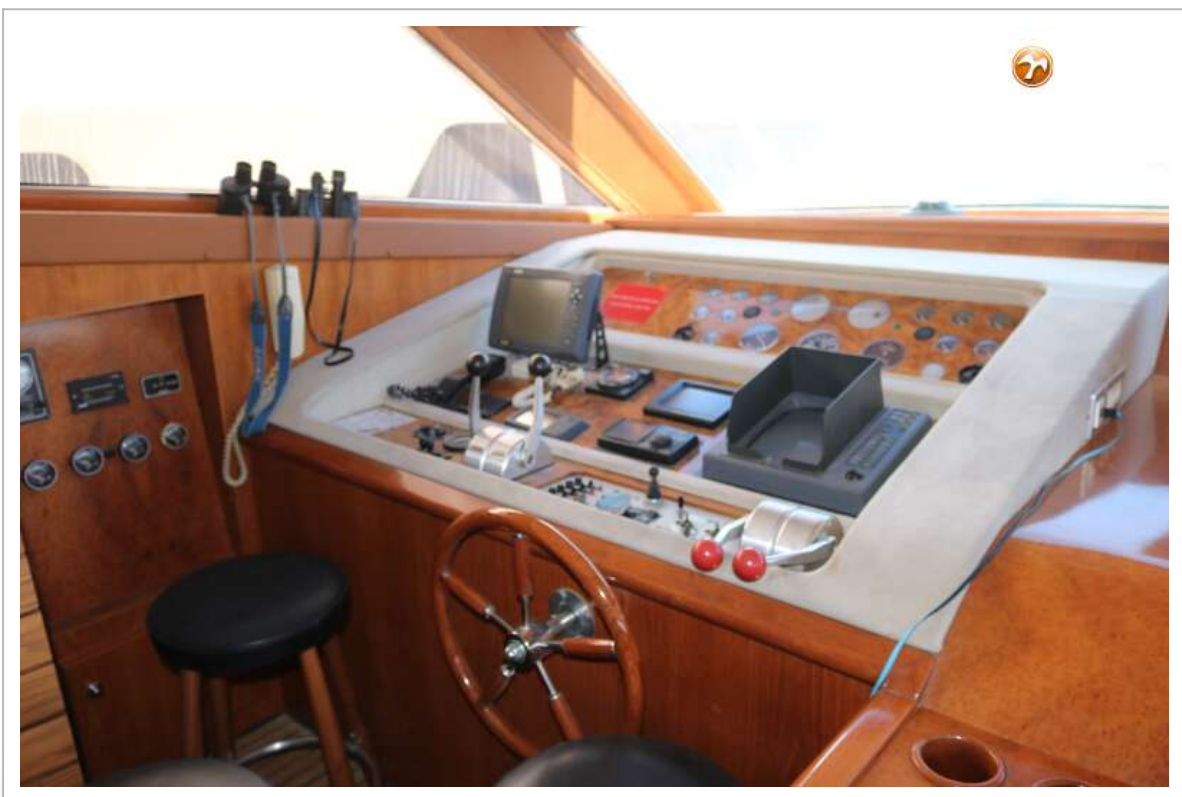
MONTE FINO 78 FLY



MONTE FINO 78 FLY



MONTE FINO 78 FLY



MONTE FINO 78 FLY





MONTE FINO 78 FLY

