



DE VALK
YACHT BROKERS



TRINTELLA IIIA



DE VALK
YACHT BROKERS

BROKERAGE | CHARTER | BERTHS | FINANCE | INSURANCE | YACHT MANAGEMENT

BROKER'S COMMENTS

The shipyard of Anne Wever built cruising yachts. During the construction of the ships, the finishing and durability got the highest priority. The interior is of mahogany and has a teakdeck. Modern, fast designed ships are the complete opposite of this concept. It's also due to this concept that many of the constructed ships are still sailing around, without the nuisance of noisy interiorparts and not fitting cupboard closings. "Aphrodite" had 3 owners. She has recently been up-dated.

Joris van de Rijt

SPECIFICATIONS

Dimensions	10.84 x 3.20 x 1.45 (m)	Builder	Anne Wever
Built	1974	Cabins	2
Material	GRP	Berths	7
Engine(s)	1 x Perkins 4108 diesel	Hp/Kw	40.00 (hp), 29.44 (kw)
Asking price	sold (VAT)	Lying	at sales office

CONTACT

Sales office	De Valk Sint Annaland B.V.	Telephone	+31 (0)166 601 000
Address	Koelhuisweg 4 4697 RM Sint Annaland NL	E-mail	sintannaland@devalk.nl

DISCLAIMER

These particulars are given in good faith as supplied but cannot be guaranteed.



GENERAL

Model	TRINTELLA IIIA
Type	sailing yacht
LOA (m)	10,84
LWL (m)	8,60
Beam (m)	3,20
Draft (m)	1,45
Air draft (m)	14,10
Headroom (m)	1,85
Year built	1974
Builder	Anne Wever
Country	The Netherlands
Designer	E.G. van der Stadt & partners
Displacement (t)	7,5
Ballast (tonnes)	cast iron 2,8
CE norm	NA
Hull material	GRP
Hull colour	white
Hull shape	S-bilged
Keel type	long keel
Superstructure material	GRP
Rubbing strake	stainless steel
Deck material	GRP
Deck finish	teak
Superstructure deck finish	teak
Cockpit deck finish	teak
Antifouling (year)	Coppercoat (2019)
Dorades	yes
Window frame	aluminium
Window material	tempered glass
Deckhatch	yes



Radar arch	non collapsible
Fuel tank (litre)	GRP 2 x 150
Freshwater tank (litre)	400
Level indicator (freshwater)	yes
Wheel steering	hydraulic Vetus MT 110
More info on hull	2019 underwaterbody stripped

ACCOMMODATION

Cabins	2
Berths	7
Interior	mahogany
Floor	teak
Aft deck	yes
Saloon	yes
Headroom saloon (m)	1,85
Heating	diesel ducted hot air Planar 4D (2022)
Chart table	yes
Aft Cabin	yes
Dinette	yes
Dinette to convert into berth	yes
Galley	yes
Countertop	plastic
Sink	stainless steel 2 x
Cooker	calor gas 2 burners
Oven	yes
Fridge	Isotherm 42 liters
Water pressure system	electrical
Manual and/or foot pump	yes
Crockery	Original Trintella (MOZA)
Owners cabin	v-bed
Bed length (m)	2



Wardrobe	shelves
Bathroom	shared
Toilet	shared
Toilet system	manual Jabsco
Wash basin	in the bathroom
Guest cabin 1	twin single
Bed length (m)	2
Wardrobe	hanging/drawers/shelves
Extra info	Slatted base under mattresses in the aft cabin

MACHINERY

No of engines	1
Make	Perkins
Type	4108
HP	40
kW	29.44
Fuel	diesel
Year installed	1975
Year of overhaul	2000
Maximum speed (kn)	6.5
Cruising speed (kn)	5
Consumption (l/hr)	4
Range (nm)	500
Engine cooling system	freshwater heat exchanger
Drive	shaft
Engine controls	bowden cable
Gearbox	hydraulic Overhauled in 2019
Thrust bearing	yes
Propeller type	fixed
Propeller blades	3
Propeller shaft material	stainless steel



Shaft lubrication	grease
Manual bilge pump	yes
Electric bilge pump	yes
Electrical installation	12V / 230V
Start battery	1 x 95 Ah (2018)
Service battery	2 x 105 Ah (2018)
Battery monitor	Mastervolt
Battery charger	Mastervolt 12/40
Diode battery combiners	Mastervolt
Shorepower	with cable
Extra info	Starter engine (2008)
Extra info	Fuel pump overhauled (2007)

NAVIGATION

Compass	Sestrel Moore
Depth sounder	Raymarine i70 (New in 2019)
Log	Raymarine i70 (New in 2019)
Windset	Raymarine i70 (New in 2019)
VHF	Icom IC-M424G
Autopilot	Raymarine Evolution ACU 400 with EV1 compass (New in 2019)
Rudder angle indicator	On autopilot
Radar	Furuno model 1720, type RDP-06
Plotter	Raymarine Axiom 7 with Lighthouse 4 software (New in 2019)
Navtex	Navtex NX300
AIS transceiver	Raymarine AIS650 Class B with separate antenna (2019)
Navigation lights	yes
Searchlight	yes

EQUIPMENT

Fixed windscreen	yes
Sprayhood	Black (2019)



Cockpit cover	Black (2019)
Winter cover	(2019)
Boarding ladder	stainless steel
Anchor	CQR Plough
Anchor chain	8 mm 40 meters
Anchor 2	Danforth
Windlass	manual Vetus
Davits	stainless steel
Davits controls	manual
Sea railing	wire
Grab rail (superstructure)	teak
Pushpit	Stainless steel
Pulpit	Stainless steel
Life raft (pers)	container Seago 4 (2017) needs survey
Lifebuoy	yes
Wiper	2 x
Clearview window	yes
Horn	air pressure
Radar reflector	yes
Fenders	yes
Mooring lines	yes
Radio-cd player	With Bluetooth
Speakers in salon	2 x
Clock - barometer	yes
Fire extinguisher	yes

RIGGING

Rigging	ketch
Standing rigging	wire
Material mast	aluminium
Mast lowering system	yes



Mainsail cover	Black (2013)
Battcars	yes
Fully battened mainsail	(2019)
Mizzen	yes
Mizzen sailcover	Black (2013)
Jib	(2019)
Genoa	yes
Genoa furler	Furlex
Genoa cover	Black (self made)
Gennaker	Bolle Jan (55 m2)
Stormjib	(17 m2)
Self tacking jib installation	Not installed
Reefing System	slabreefing
Boomvang	tackle
Genoa sheetwinches	2 x
Halyard winches	3 x
Spi-pole	aluminium



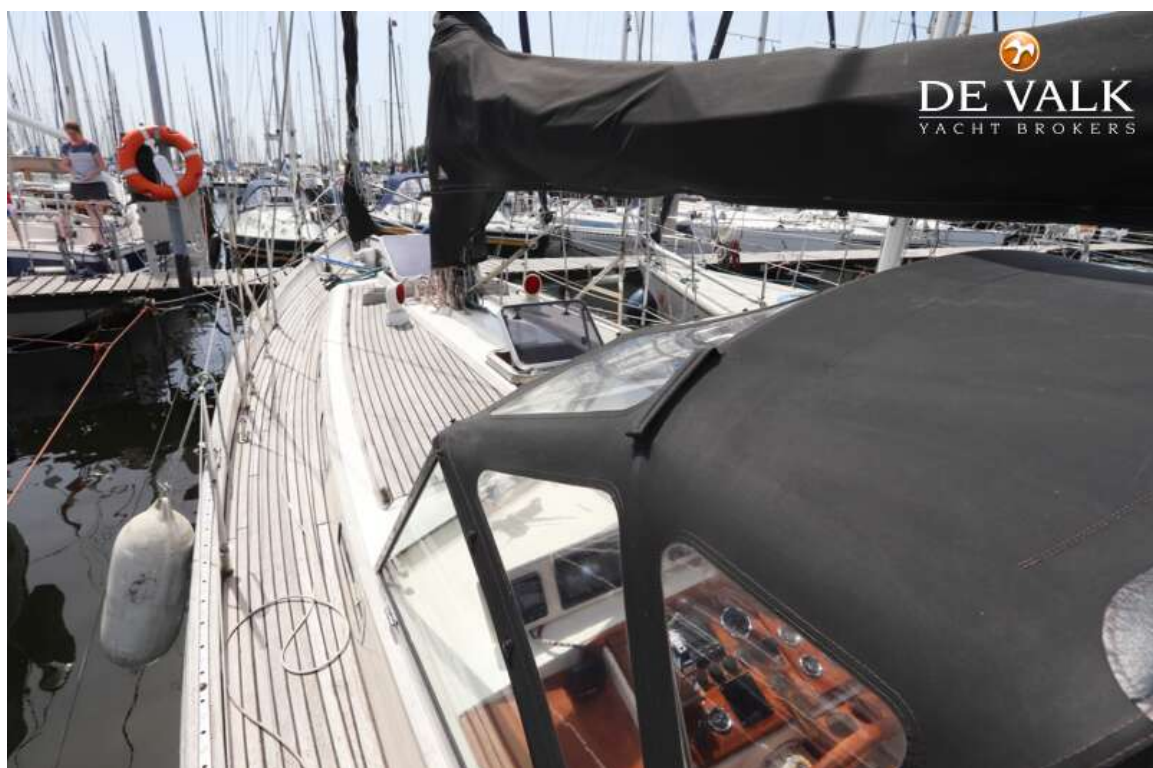
TRINTELLA IIIA



TRINTELLA IIIA

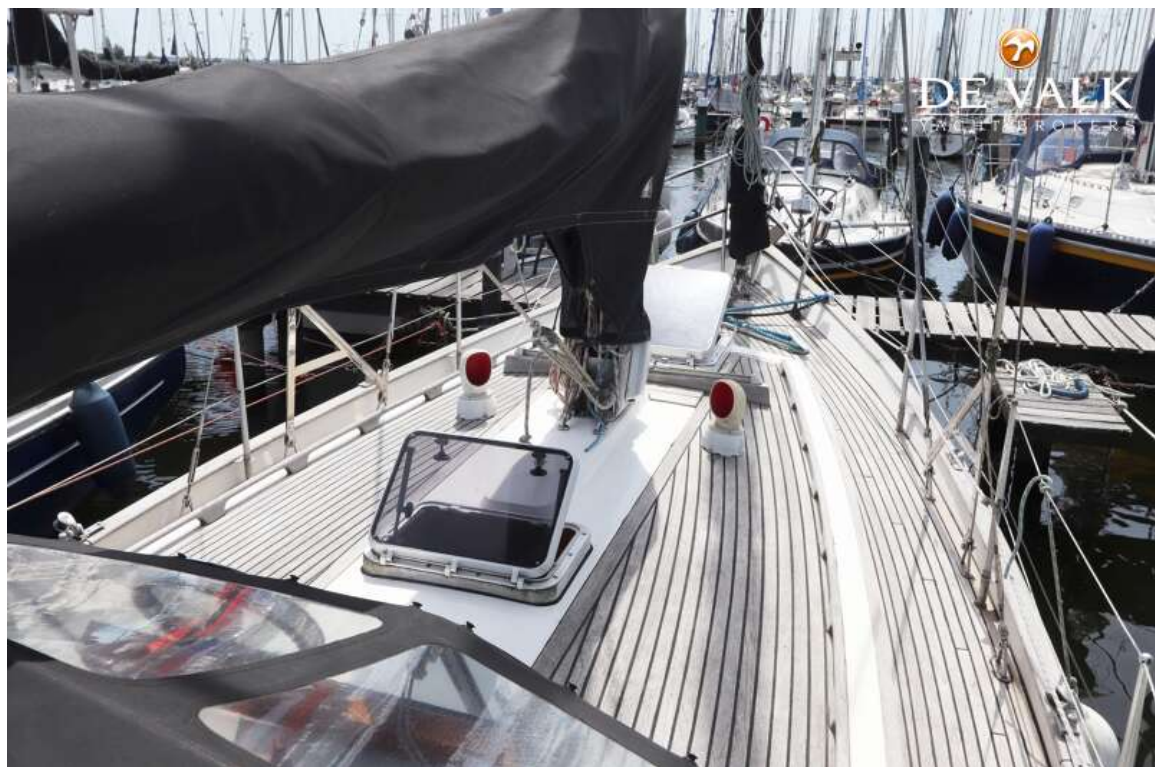


TRINTELLA IIIA



TRINTELLA IIIA





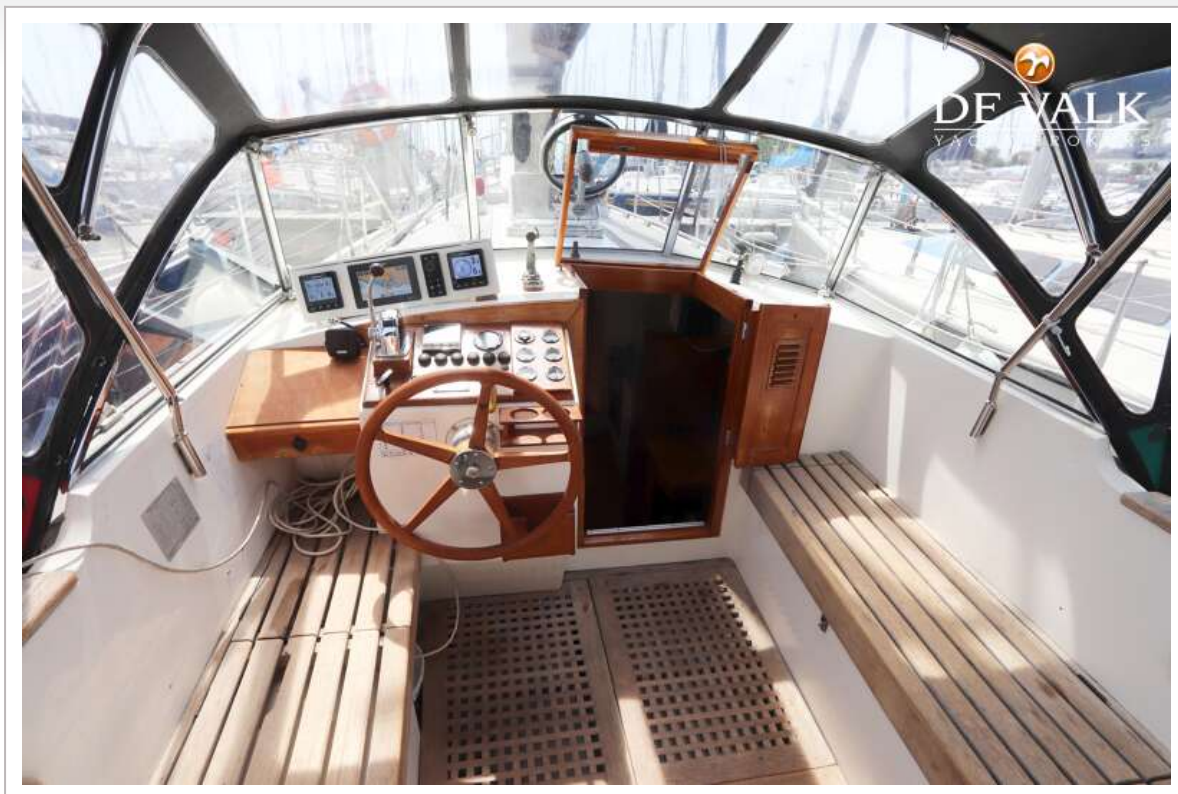
TRINTELLA IIIA



TRINTELLA IIIA



TRINTELLA IIIA



TRINTELLA IIIA



TRINTELLA IIIA



TRINTELLA IIIA



TRINTELLA IIIA



TRINTELLA IIIA



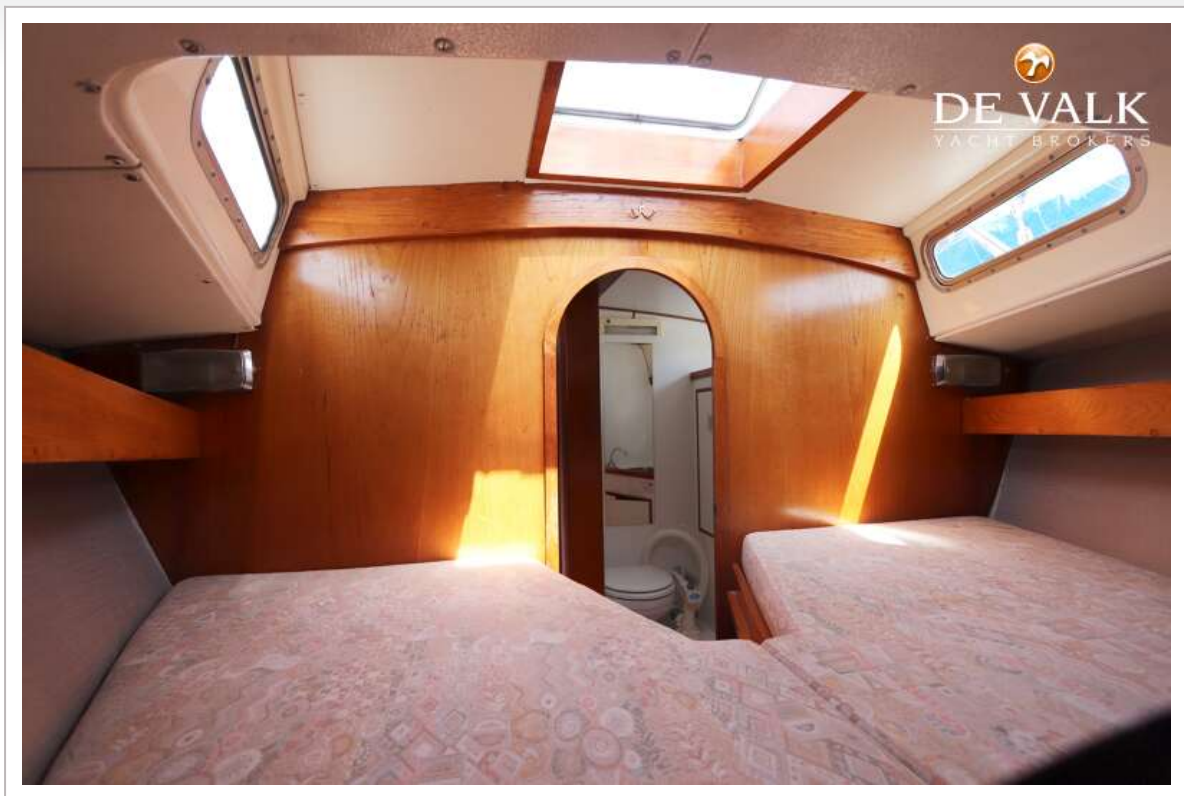
TRINTELLA IIIA



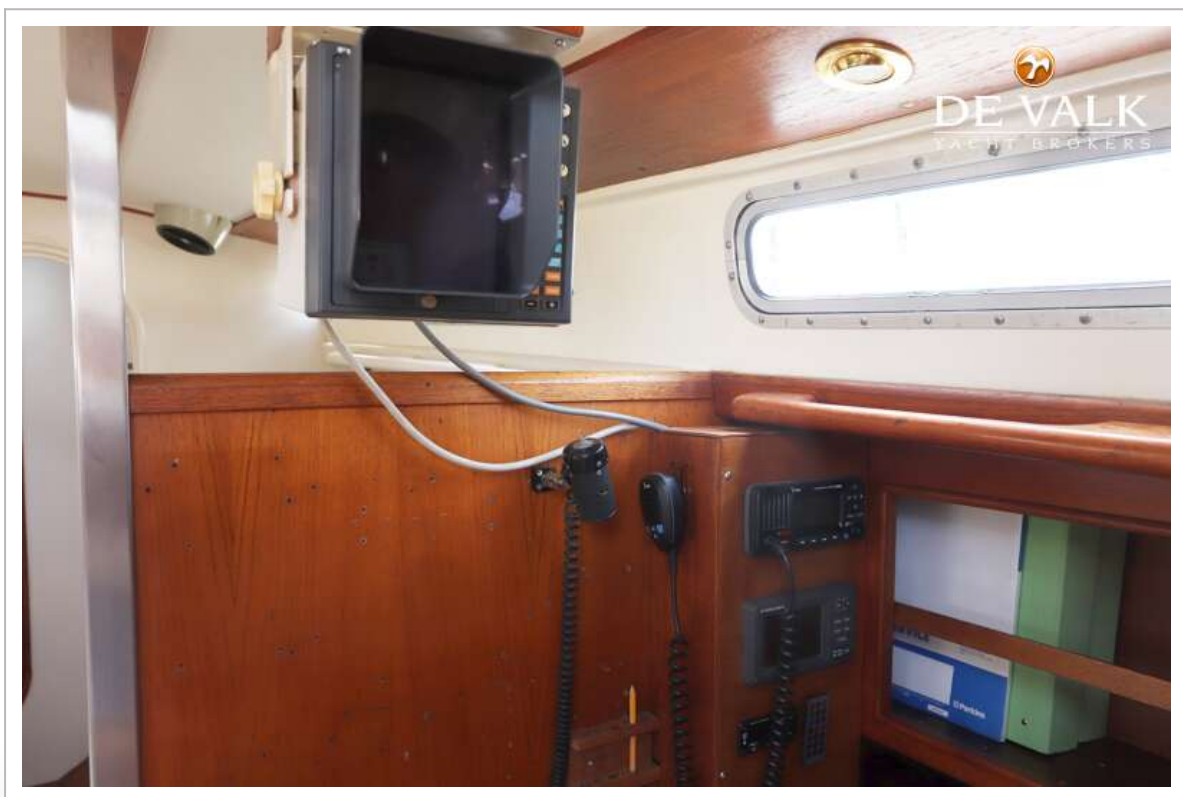
TRINTELLA IIIA

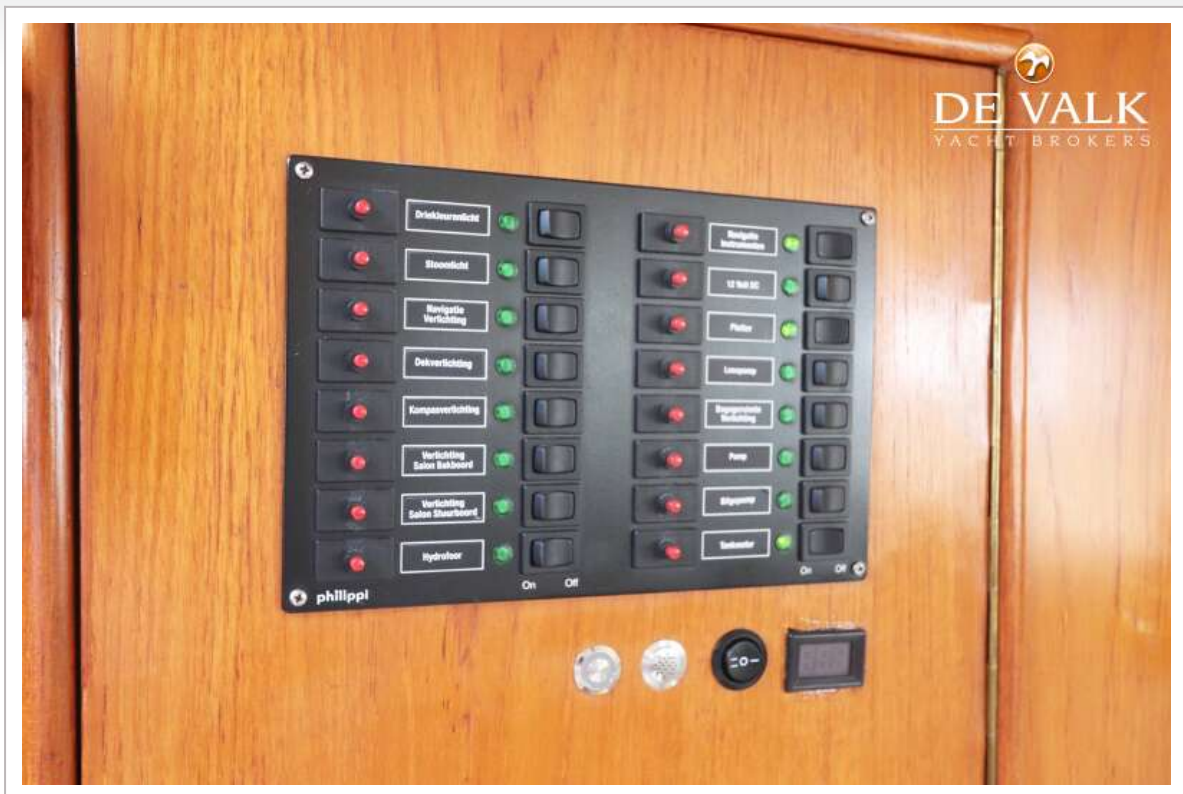


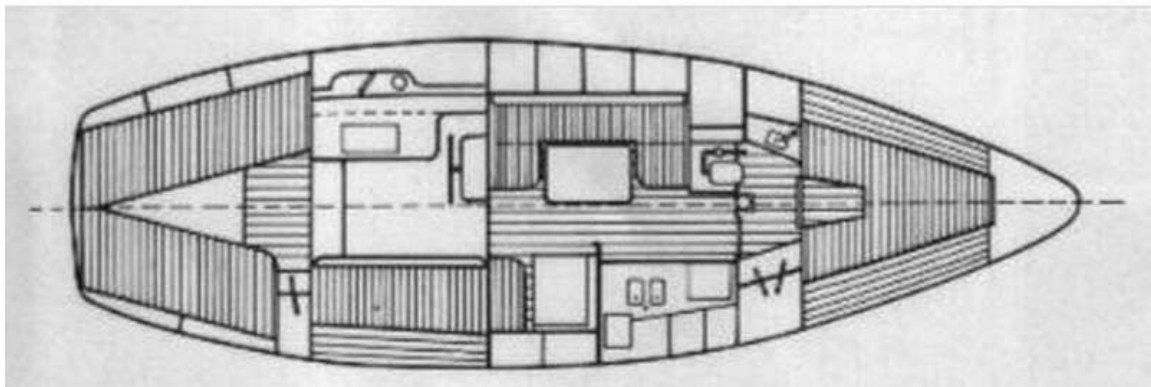
TRINTELLA IIIA



TRINTELLA IIIA







TRINTELLA IIIA

