



ROUND BILGED HAAK 60

ROUND BILGED HAAK 60

BROKER'S COMMENTS

Experience true long-range cruising aboard this timeless 60-foot classic motor yacht, built by the respected Haak Shipyard in the Netherlands. Designed for comfortable passages and effortless exploration, she combines traditional Dutch craftsmanship with elegant, classic lines. A yacht for owners who value heritage, seaworthiness, and the freedom to travel far in enduring style.

Mark Hesselmans

SPECIFICATIONS

Dimensions	18.00 x 5.20 x 2.10 (m)	Builder	Shipyard Haak / Zaandam
Built	1971	Cabins	4
Material	Steel	Berths	8
Engine(s)	1 x Mercedes OM 355 diesel	Hp/Kw	195.00 (hp), 143.00 (kw)
Asking price	€ 555.000 (VAT Paid)	Lying	at sales office

CONTACT

Sales office	De Valk Sneek	Telephone	+31 (0)515 42 80 30
Address	Zwolsmanweg 7 8606 KC Sneek NL	E-mail	sneek@devalk.nl

DISCLAIMER

These particulars are given in good faith as supplied but cannot be guaranteed.



ROUND BILGED HAAK 60

GENERAL

Model	ROUND BILGED HAAK 60
Type	motor yacht
LOA (m)	18,00
Beam (m)	5,20
Draft (m)	2,10
Air draft (m)	8,00
Air draft min (m)	5,30
Headroom (m)	1,95
Year built	1971
Builder	Shipyard Haak / Zaandam
Country	The Netherlands
Designer	Haak
Displacement (t)	58
Ballast (tonnes)	concrete
Hull material	steel
Hull colour	white
Hull thickness (mm)	8-6 mm
Hull shape	round-bilged
Keel type	bilge keels
Superstructure material	steel
Superstructure (mm)	partly aluminum for the compass 5 mm
Deck plate thickness (mm)	5 mm
Rubbing strake	steel
Deck material	steel
Deck finish	Partly teak and flexiteek
Superstructure deck finish	paint
Antifouling (year)	2025 Hempel
Window frame	aluminium
Window material	tempered glass
Deckhatch	2x escape hatch forward



ROUND BILGED HAAK 60

Portholes	copper chromed
Insulation	foam plates
Mast can be lowered	manual
Fuel tank (litre)	steel 3x double bottom tanks; total 4.800 ltr.
Fuel tank 2 (litre)	Tanks cleaned 2020
Level indicator (fuel tank)	Bep
Fuel daytank (litre)	stainless steel 150 ltr. filled with electric pump
Level indicator (daytank)	Bep
Freshwater tank (litre)	steel 4.000 ltr. forward double bottom tank, cemented
Level indicator (freshwater)	Bep
Level indicator (blackwater)	Bep
Blackwater tank extraction	pump
Greywater tank (litre)	steel 2.000 Ltr forward tank also used as trim tank
Level indicator (greywater)	Bep
Wheel steering	hydraulic
Inside helm position	yes
Emergency tiller	yes
More info on paintwork	Last painted 2025 1 component
Extra info	Last refit at Talsma Shipyard - Franeker/NL

ACCOMMODATION

Cabins	4
Berths	8
Interior	Teak with Oak on maindeck; Mahogany with Ash trim in accom.
Layout	yes
Floor	carpet
Aft deck	With settee
Pilot house	yes
Deck saloon	yes
Headroom saloon (m)	1,93 m
Heating	central hot water Kabola (2025)



ROUND BILGED HAAK 60

Chart table	yes
Opening door to aft deck	yes
Galley	yes
Countertop	plastic
Sink	stainless steel
Cooker	calor gas 4 burner gas AEG
Oven	yes
Extractor	Atag
Microwave/oven combi	LG
Fridge	Zanussi
Freezer	Bosch
Hot water system	on central heating
Water pressure system	electrical
Owners cabin	twin single
Bed length (m)	1,90 m
Wardrobe	hanging/drawers/shelves
Bathroom	en suite
Toilet	en suite
Toilet system	electric
Wash basin	in the bathroom
Shower	en suite
Guest cabin 1	twin single
Bed length (m)	1,90 m
Wardrobe	hanging/drawers/shelves
Bathroom	shared
Toilet	shared
Toilet system	electric
Wash basin	in the cabin
Shower	shared
Guest cabin 2	bunk bed
Bed length (m)	1,90 m.
Wardrobe	hanging and drawers



ROUND BILGED HAAK 60

Bathroom	shared
Guest cabin 3	bunk bed
Bed length (m)	1,90 m.
Wardrobe	hanging and drawers
Bathroom	shared
Washing machine	Siemens

MACHINERY

No of engines	1
Make	Mercedes
Type	OM 355
HP	195
kW	143
Fuel	diesel
Year installed	1972
Maximum speed (kn)	9,5
Cruising speed (kn)	7
Consumption (l/hr)	7
Range (nm)	2700
Engine cooling system	freshwater heat exchanger
Drive	shaft
Shaft seal	yes
Engine controls	mechanical
Gearbox	mechanical Reintjens; BGA 180- 3:1
Bowthruster	electric Sidepower 24V
Sternthruster	electric Sidepower 24V
Exhaust	dry
Propeller type	fixed Van Voorden; diam. 950mm
Propeller blades	3
Propeller shaft material	steel
Shaft lubrication	grease Automatic



ROUND BILGED HAAK 60

Electric bilge pump	2x Flojet (also in use for black water tank)
Bilge alarm	yes
Electrical installation	12/24/230 V.
Generator	Kohler 8 kWh
Running hours generator	2134
Batteries	yes
Start battery	2x optima Red Top
Service battery	2x Wilco 230 amp
Generator battery	1x Centurion 100 Amp
Bowthruster battery	2x Centurion 240 Amp
Sternthruster battery	2x Centurion 240 Amp
Battery monitor	Victron BMV
Battery charger/inverter	Victron Quatro 24/5000/2120
Shorepower	with cable
Insulation transformer	Victron 3.5
Extra info	Lube oil tank 100 ltr.
Extra info	Day fuel tank 100 ltr. for Kabola and genset

NAVIGATION

Compass	yes
Electric compass	In multiscreen
Depth sounder	In multiscreen
Log	In multiscreen
Windset	In multiscreen
VHF	Shipmate RS8315
Autopilot	Raymarine
Rudder angle indicator	In the autopilot and on the multiscreen
Radar	Quantum 24 mijl
GPS	yes
Radar/GPS/plotter	Raymarine axiom multiscreen
Personal computer	yes



ROUND BILGED HAAK 60

Electronic chart(s)	Navionics
AIS transceiver	Ais A Carbon Pro
Camera	Rear view in multiscreen
Navigation lights	yes
Searchlight	yes
Loudhailer	Defect

EQUIPMENT

Cockpit cover	yes
Window cover	yes
Cockpit cushions	yes
Cockpit table	yes
Boarding ladder	yes
Transom door	yes
Gangway	yes
Deck shower	Cold
Anchor	Pool 2x
Anchor chain	100 mtr. 2x
Chain counter	Not connected
Windlass	electrical Wolfranss down by gravity up electric
Capstan	Rear
Deck wash	yes
Deck crane	500 Kg
Sea railing	steel
Grab rail (superstructure)	steel
Railing side opening gates	yes
Life raft	container
Life raft (pers)	8
Last life raft survey	Expired
Lifejackets	8 plus floating body's
Lifebuoy	yes



ROUND BILGED HAAK 60

Wiper	2x
Clearview window	Speich
Window ventilator	yes
Window heating	yes
Horn	air pressure
Fenders	yes
Mooring lines	yes
Spare parts	yes
Tools	yes
TV	Sony
Radio-cd player	1x JVC 1x Pionier
Speakers in salon	yes
Clock - barometer	Prosser electric Baro Wempe
Fire extinguisher	yes
Latest extinguisher survey	yes
Auto extinguisher system	Halon
Extra info	CVO until 2031



ROUND BILGED HAAK 60



ROUND BILGED HAAK 60



ROUND BILGED HAAK 60



ROUND BILGED HAAK 60



ROUND BILGED HAAK 60



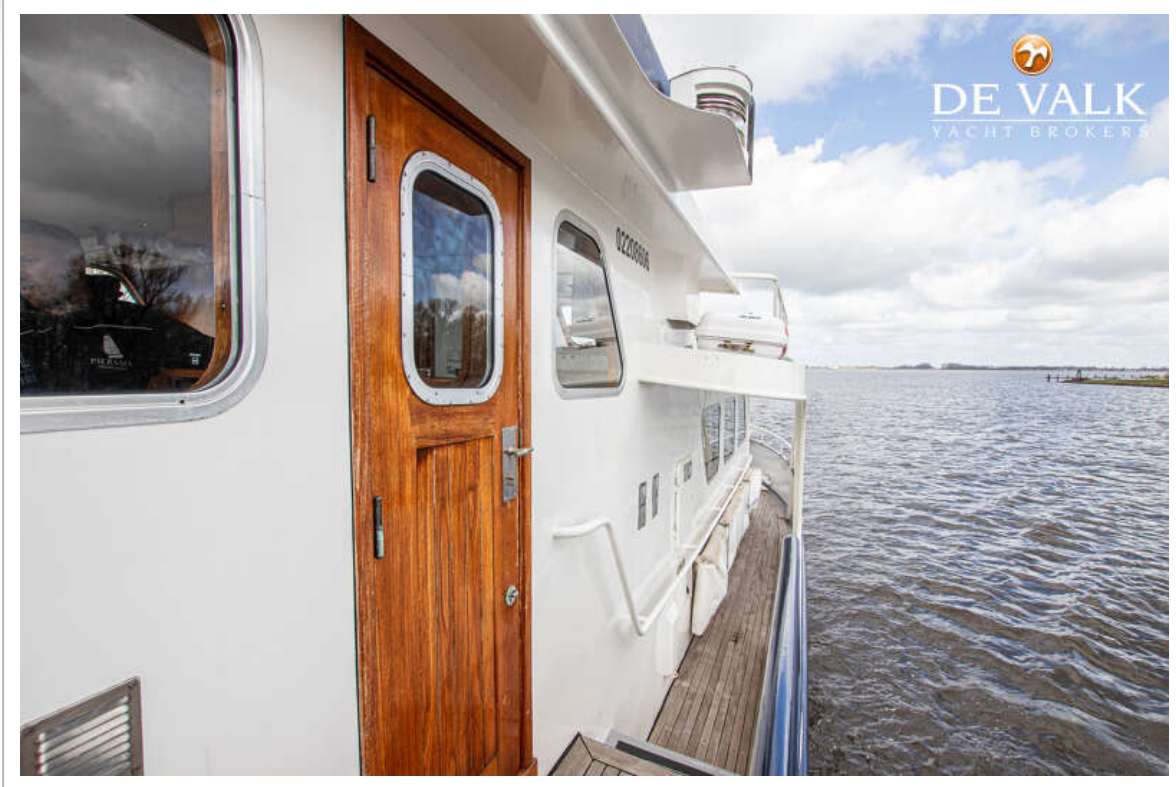
ROUND BILGED HAAK 60



ROUND BILGED HAAK 60



ROUND BILGED HAAK 60



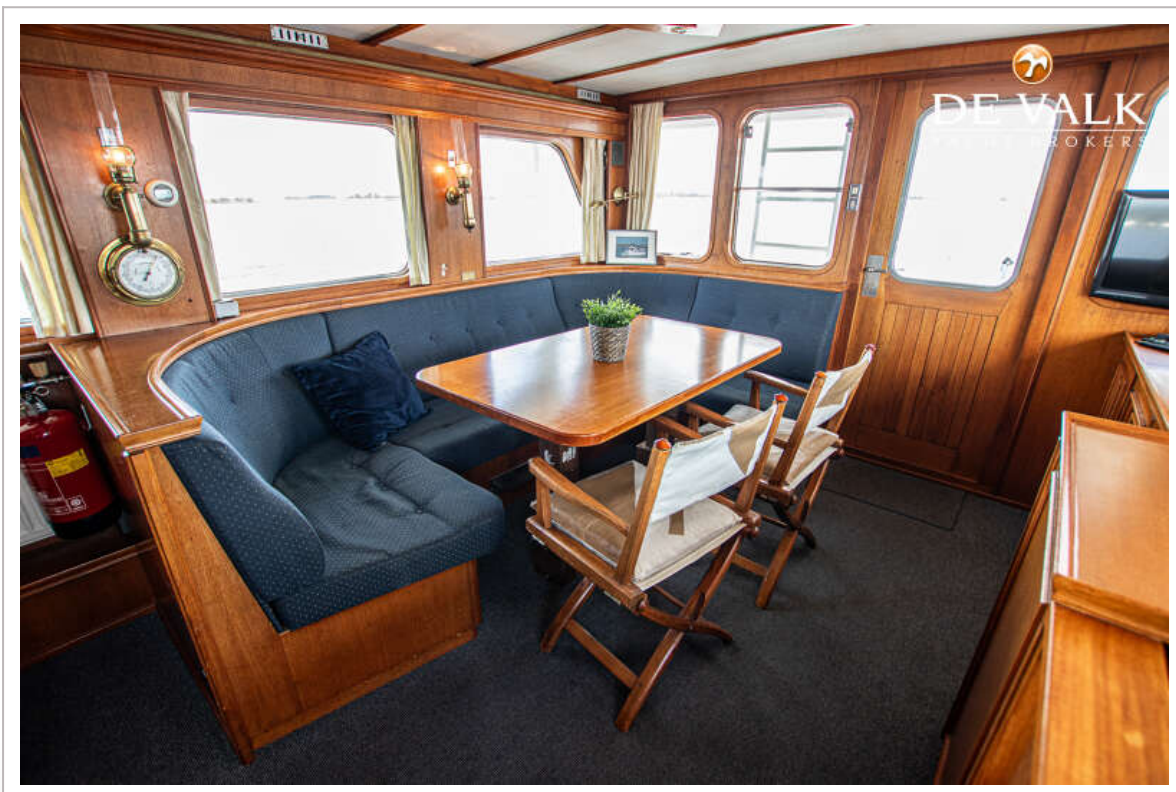
ROUND BILGED HAAK 60



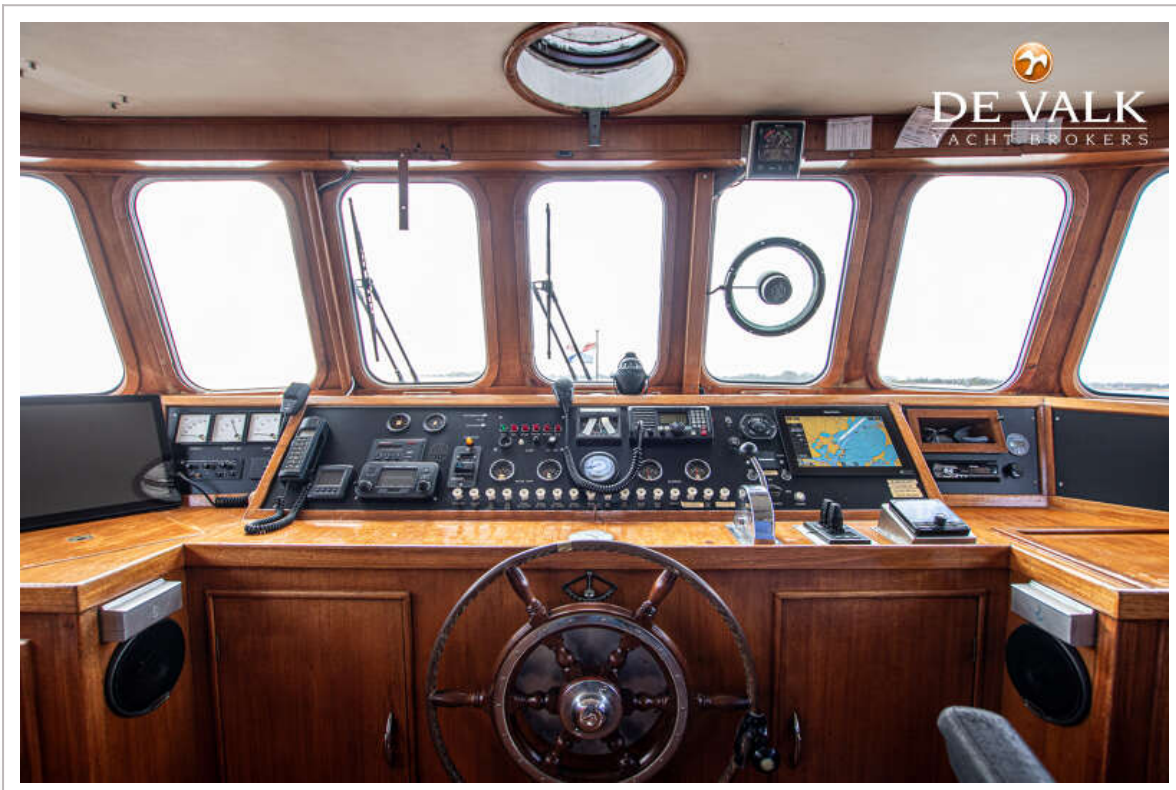
ROUND BILGED HAAK 60



ROUND BILGED HAAK 60



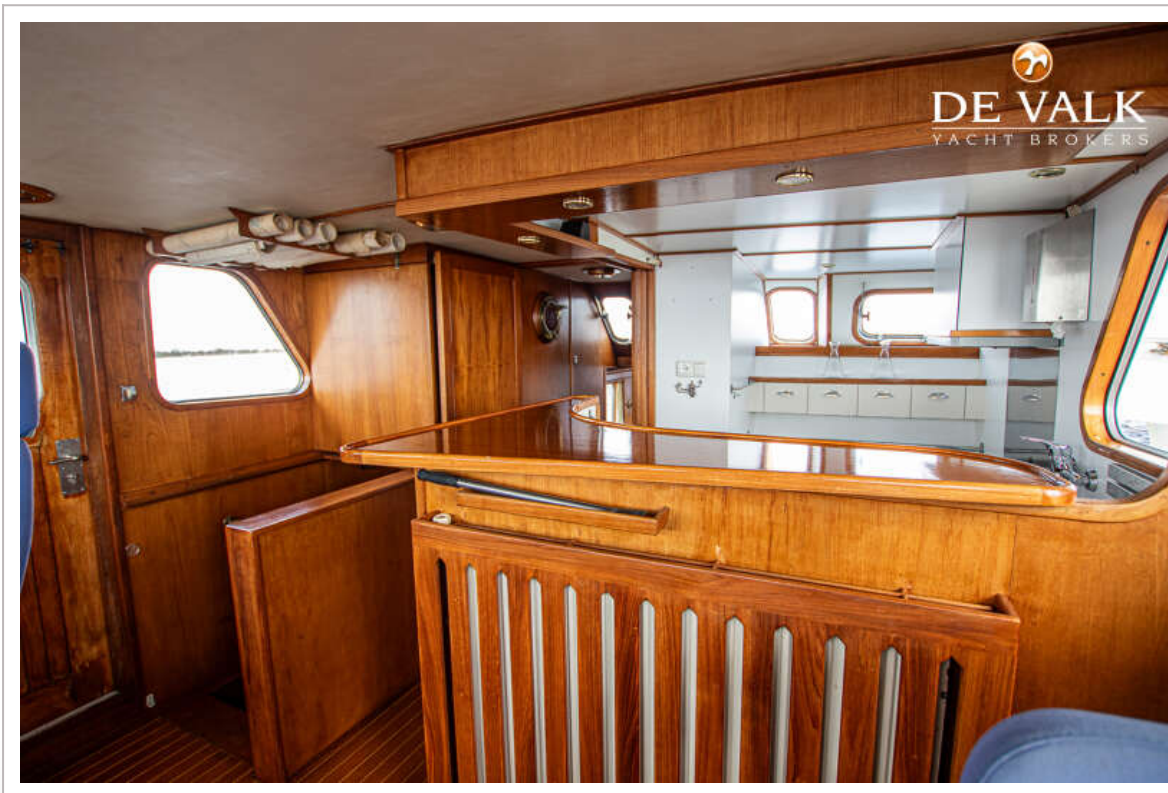
ROUND BILGED HAAK 60



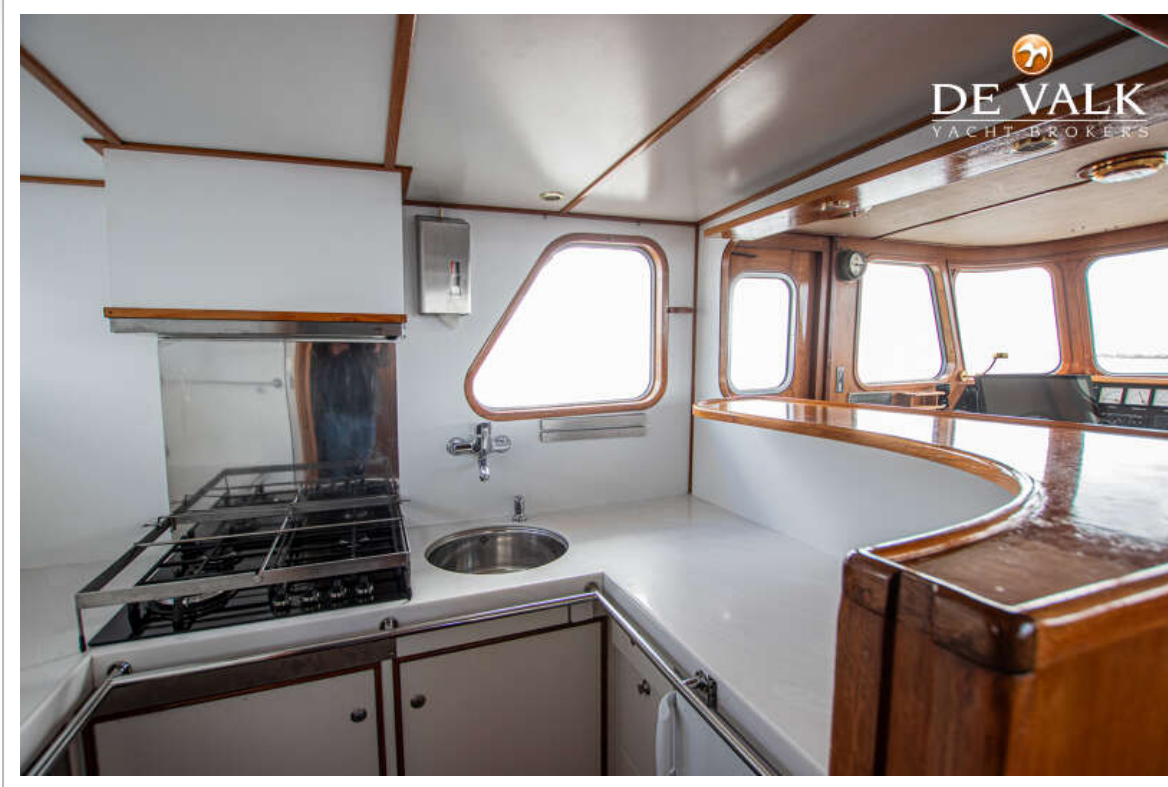
ROUND BILGED HAAK 60



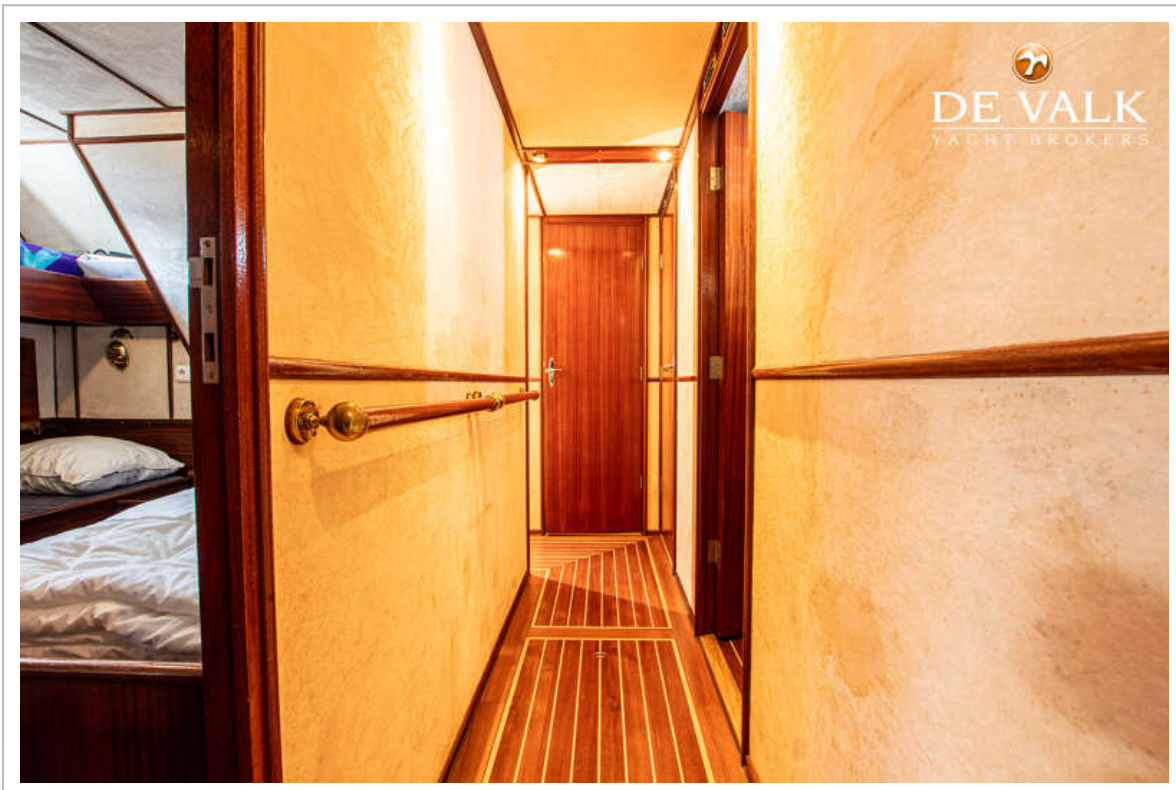
ROUND BILGED HAAK 60



ROUND BILGED HAAK 60



ROUND BILGED HAAK 60



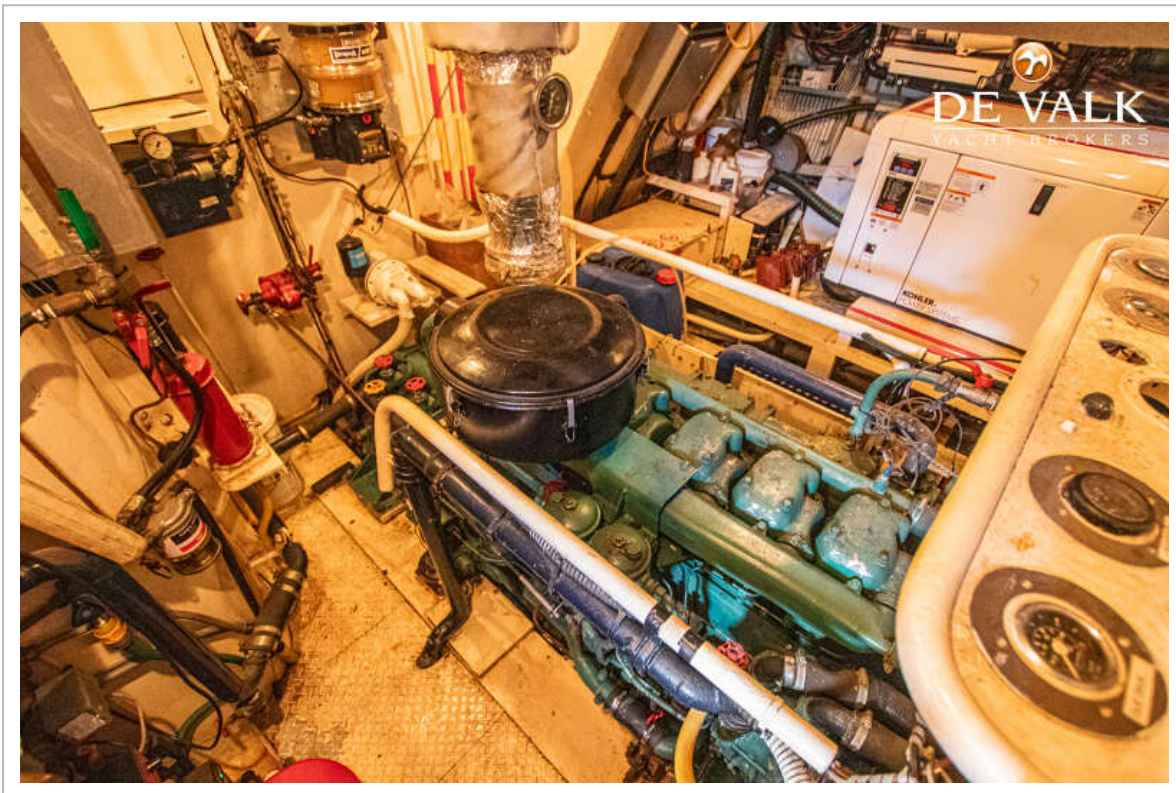
ROUND BILGED HAAK 60



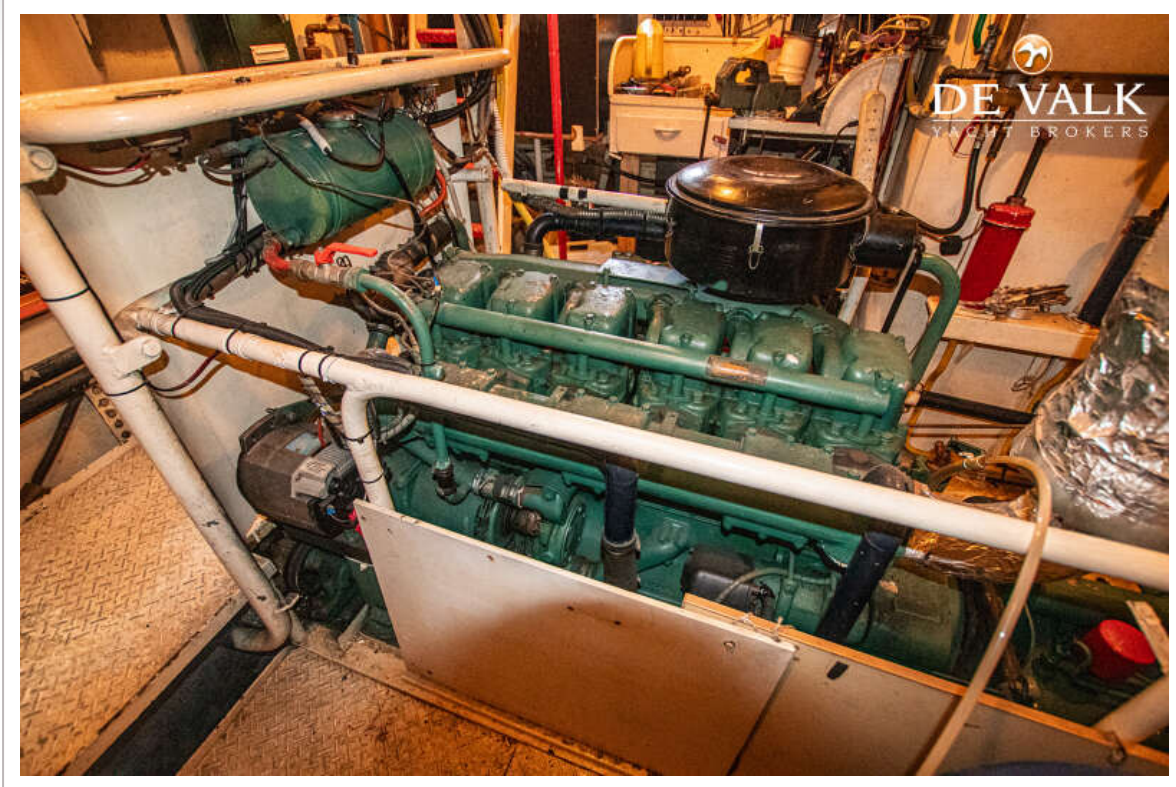
ROUND BILGED HAAK 60



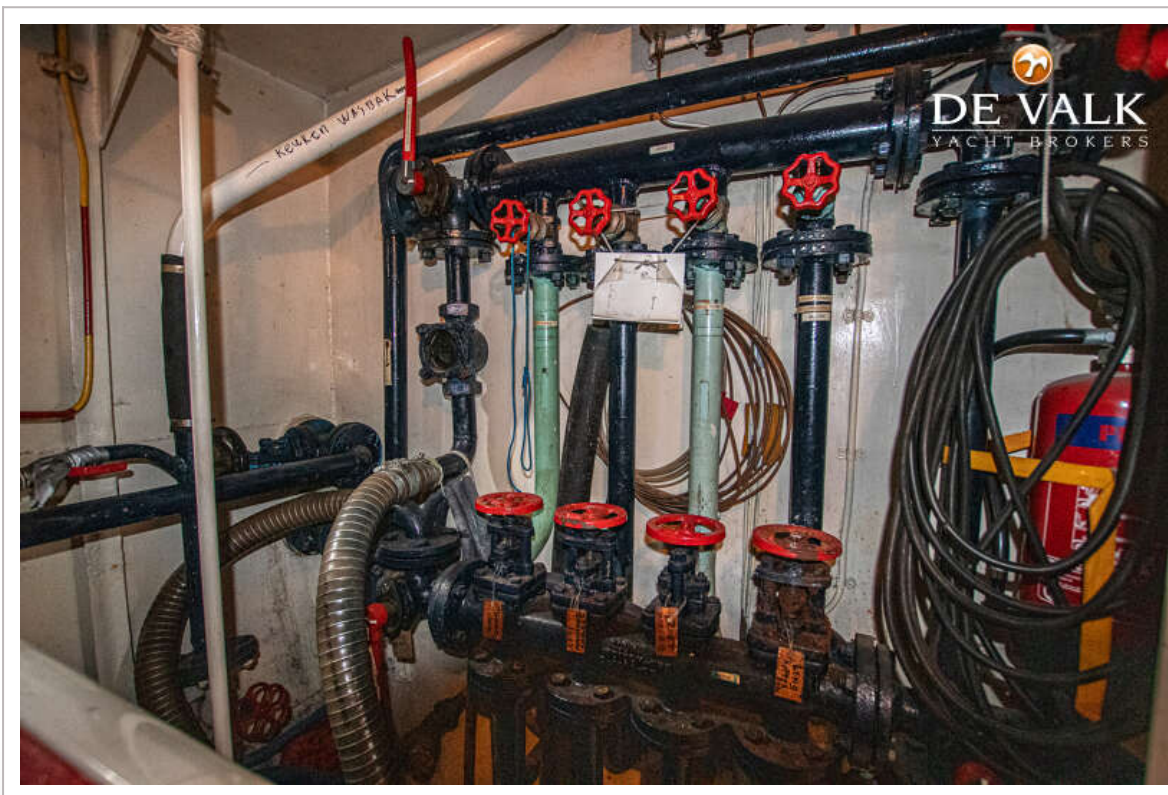
ROUND BILGED HAAK 60



ROUND BILGED HAAK 60



ROUND BILGED HAAK 60



ROUND BILGED HAAK 60

