



DE VALK
YACHT BROKERS



LUXE MOTOR STEILSTEVEN 28M MS STEILVOL



DE VALK
YACHT BROKERS

LUXE MOTOR STEILSTEVEN 28M MS STEILVOL

BROKER'S COMMENTS

Beautifully built and fully refurbished Luxe Motor-Steilsteven 28m originally built in the year 1931. The exclusive motor yacht has had a complete refit in 2010 on technical and optical level. During the refit, the "MS Steilvol" was equipped with a Cummins diesel engine, hydraulic bow and stern thruster. There are also two telescopic spud poles installed, central heating, etc... This Luxe Motor-Steilsteven 28m is a very charming appearance and also very suitable for permanent residence.

Jochem Heijermans

SPECIFICATIONS

Dimensions	28.16 x 5.18 x 1.40 (m)	Builder	
Built	1931	Cabins	2
Material	Steel	Berths	6
Engine(s)	1 x Cummins 6BT diesel	Hp/Kw	200.00 (hp), 147.00 (kw)
Asking price	sold (VAT)	Lying	elsewhere / Not at sales office

CONTACT

Sales office	De Valk Belgium	Telephone	+32 586 80 218
Address	1401 PT Nieuwpoort BE	E-mail	belgium@devalk.nl

DISCLAIMER

These particulars are given in good faith as supplied but cannot be guaranteed.



LUXE MOTOR STEILSTEVEN 28M MS STEILVOL

GENERAL

Model	LUXE MOTOR STEILSTEVEN 28M MS STEILVOL
Type	motor yacht
LOA (m)	28,16
Beam (m)	5,18
Draft (m)	1,40
Air draft (m)	4,20
Headroom (m)	2,00
Year built	1931
Country	The Netherlands
Displacement (t)	120
Hull material	steel
Hull colour	Beech
Hull thickness (mm)	6
Hull shape	flat bottom
Superstructure material	steel
Rubbing strake	steel
Deck material	steel
Deck finish	paint Two component epoxy paint (2021) tear plates
Superstructure deck finish	paint Two component epoxy paint (2021)
Cockpit deck finish	paint Two component epoxy paint (2021) + woven venyle
Antifouling (year)	Two component paint (2021)
Window frame	aluminium
Window material	double glazing
Deckhatch	yes
Portholes	steel
Insulation	rockwool
Fuel tank (litre)	steel 2000 + 2000
Fuel tank 2 (litre)	polyethylene 600 (2019)
Level indicator (fuel tank)	3x gauge glass
Freshwater tank (litre)	polyethylene 2x 3500 (2010)



LUXE MOTOR STEILSTEVEN 28M MS STEILVOL

Level indicator (freshwater)	Light indicator
Blackwater tank (litre)	polyethylene 2x 2000 (2010)
Level indicator (blackwater)	yes
Wheel steering	hydraulic
Inside helm position	yes
More info on paintwork	Two component epoxy paint (2021)

ACCOMMODATION

Cabins	2
Berths	6
Interior	White modern (2010)
Floor	vinyl Veneer parquet
Aft deck	12 seats
Saloon	yes
Headroom saloon (m)	Galley 2.05 - salon 2.10
Heating	yes
Galley	12 seats
Countertop	plastic (2010)
Sink	stainless steel
Cooker	calor gas Scholtes 6 burner (2010)
Oven	2x Scholtes electric (2010)
Microwave	yes
Fridge	Bosh (2010)
Freezer	Liebherr (2020)
Hot water system	on central heating
Water pressure system	electrical Water filter system
Dishwasher	Bauknecht
Owners cabin	French bed
Bed length (m)	2.10 x 1.80
Bathroom	shared
Toilet	shared



LUXE MOTOR STEILSTEVEN 28M MS STEILVOL

Toilet system	electric
Wash basin	in the bathroom
Shower	shared
Guest cabin 1	double bed
Bed length (m)	1.95 x 1.60
Wardrobe	hanging/drawers/shelves
Bathroom	shared
Toilet	shared
Toilet system	electric
Wash basin	in the bathroom
Shower	shared
Washing machine/dryer combi	AEG

MACHINERY

No of engines	1
Make	Cummins
Type	6BT
HP	200
kW	147
Fuel	diesel
Year installed	2010
Maximum speed (kn)	7
Cruising speed (kn)	5
Consumption (l/hr)	7
Engine hours	850
Engine cooling system	hopper cooling
Drive	shaft
Engine controls	yes
Gearbox	hydraulic
Bowthruster	hydraulic 25pk
Sternthruster	hydraulic 25pk



LUXE MOTOR STEILSTEVEN 28M MS STEILVOL

Exhaust	yes
Propeller shaft material	stainless steel
Shaft lubrication	grease
Electric bilge pump	yes
Bilge alarm	yes
Electrical installation	12V/24V/220V
Generator	Yanmar 8Kva
Running hours generator	336
Generator 2	Hydraulic engine
Batteries	yes
Start battery	12V/230Ah
Service battery	24V/1230Ah(2015)
Generator battery	2x 12V
Battery charger	Ctek 2x
Battery charger/inverter	Victron 24V/5000Ah/120Ah (2015)
Solar panel	8x 250W (2015)
Shorepower	with cable
Extra info	2x spudpoles

NAVIGATION

Compass	yes
VHF	2x VHF
AIS transponder	yes
Navigation lights	yes

EQUIPMENT

Fixed windscreen	yes
Cockpit cover	(2012)
Cockpit cushions	yes
Cockpit table	yes
Cockpit chairs	yes



LUXE MOTOR STEILSTEVEN 28M MS STEILVOL

Anchor	yes
Windlass	electrical
Capstan	yes
Deck wash	yes
Davits	steel
Davits controls	manual
Sea railing	yes
Railing side opening gates	2x
Pushpit	yes
Pulpit	yes
Lifejackets	yes
Wiper	3x
Horn	air pressure
Fenders	yes
Mooring lines	yes
TV	Smart TV Samsung
Fire extinguisher	yes
Extinguisher in engine room	yes



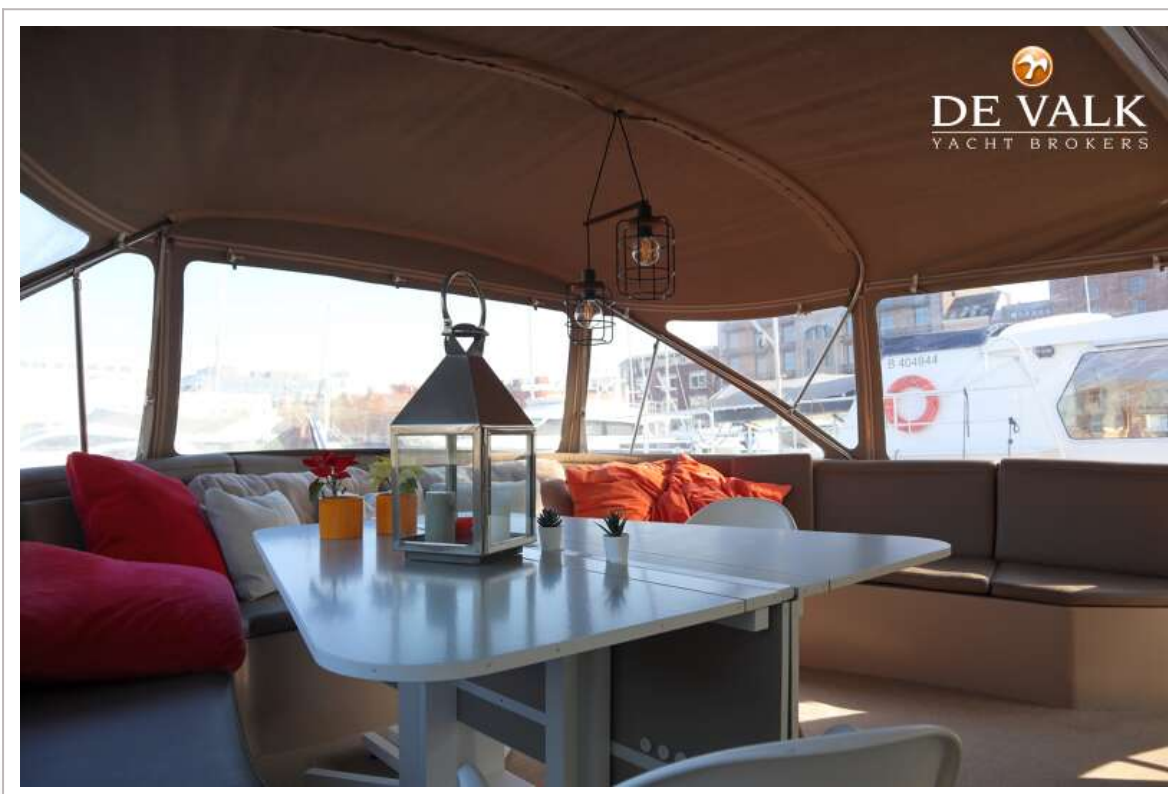
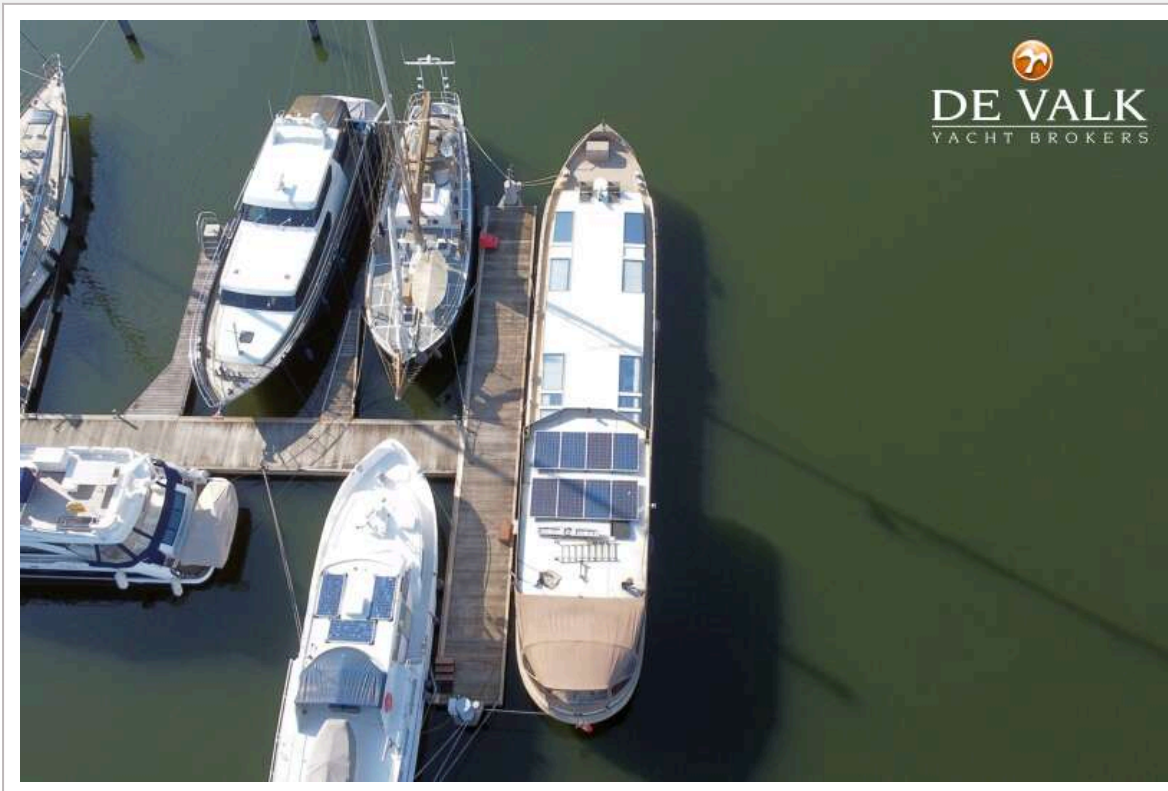
LUXE MOTOR STEILSTEVEN 28M MS STEILVOL



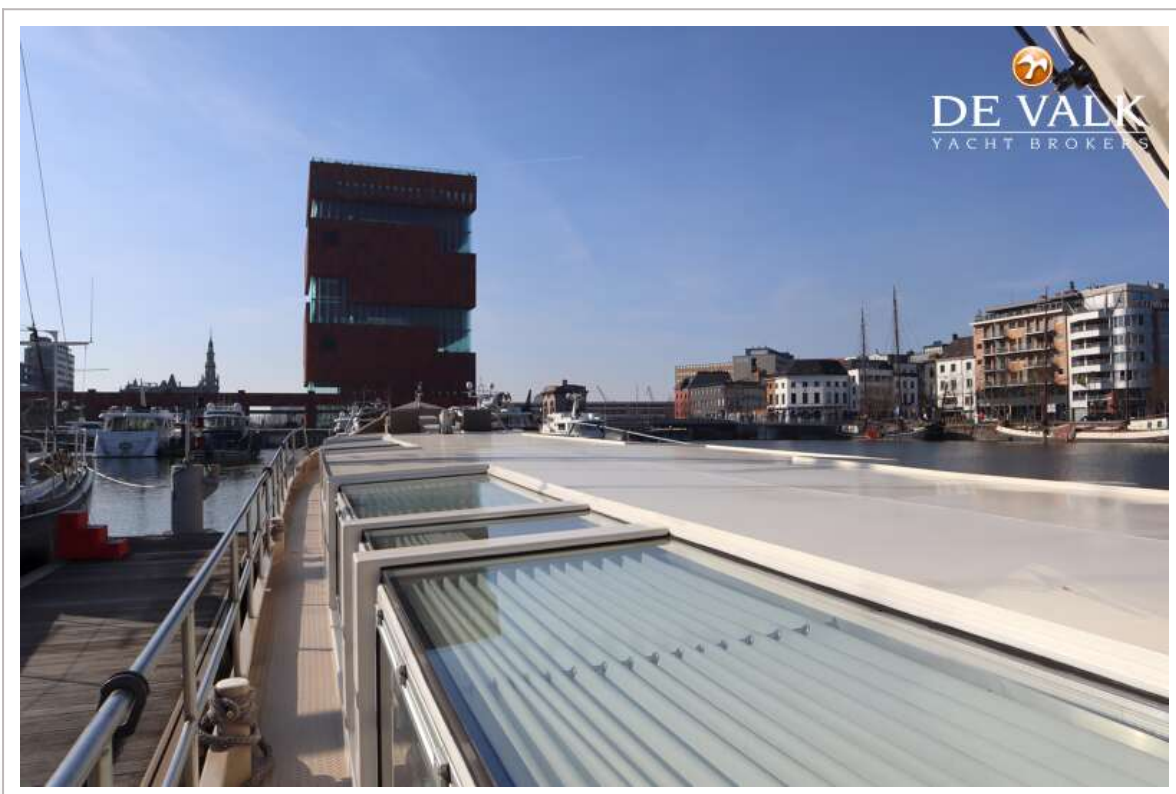
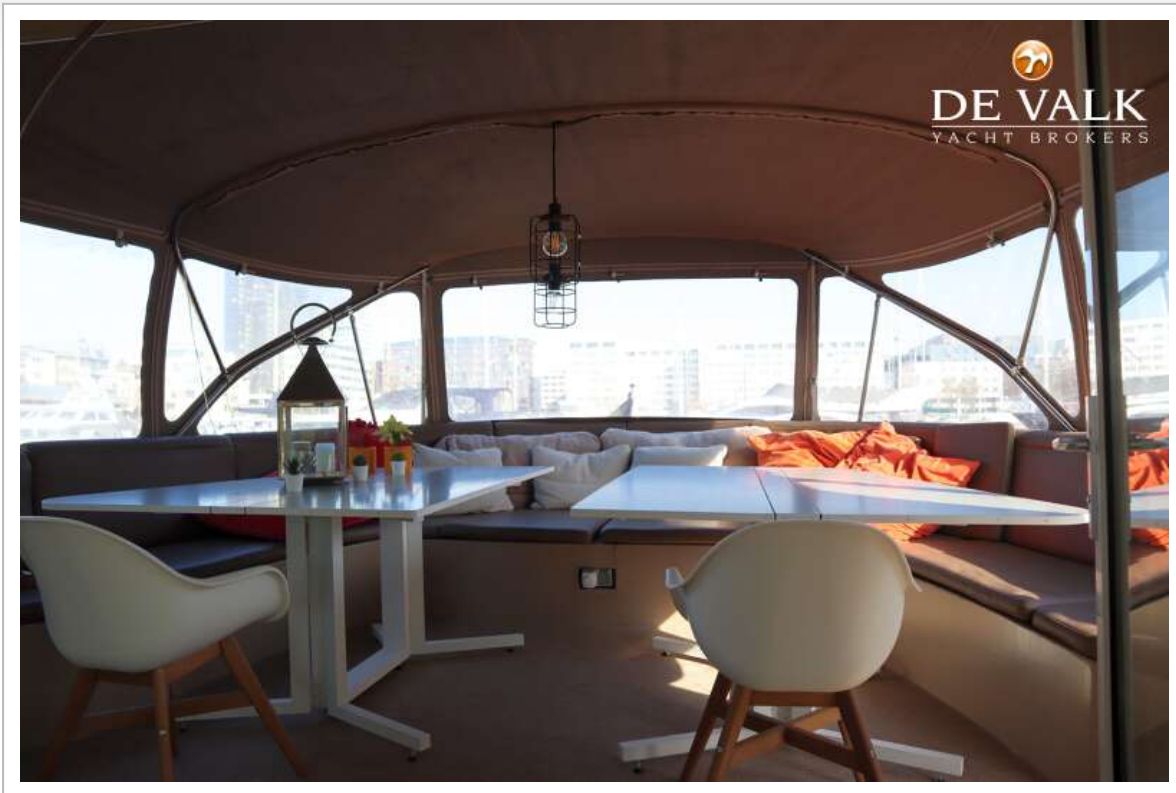
LUXE MOTOR STEILSTEVEN 28M MS STEILVOL



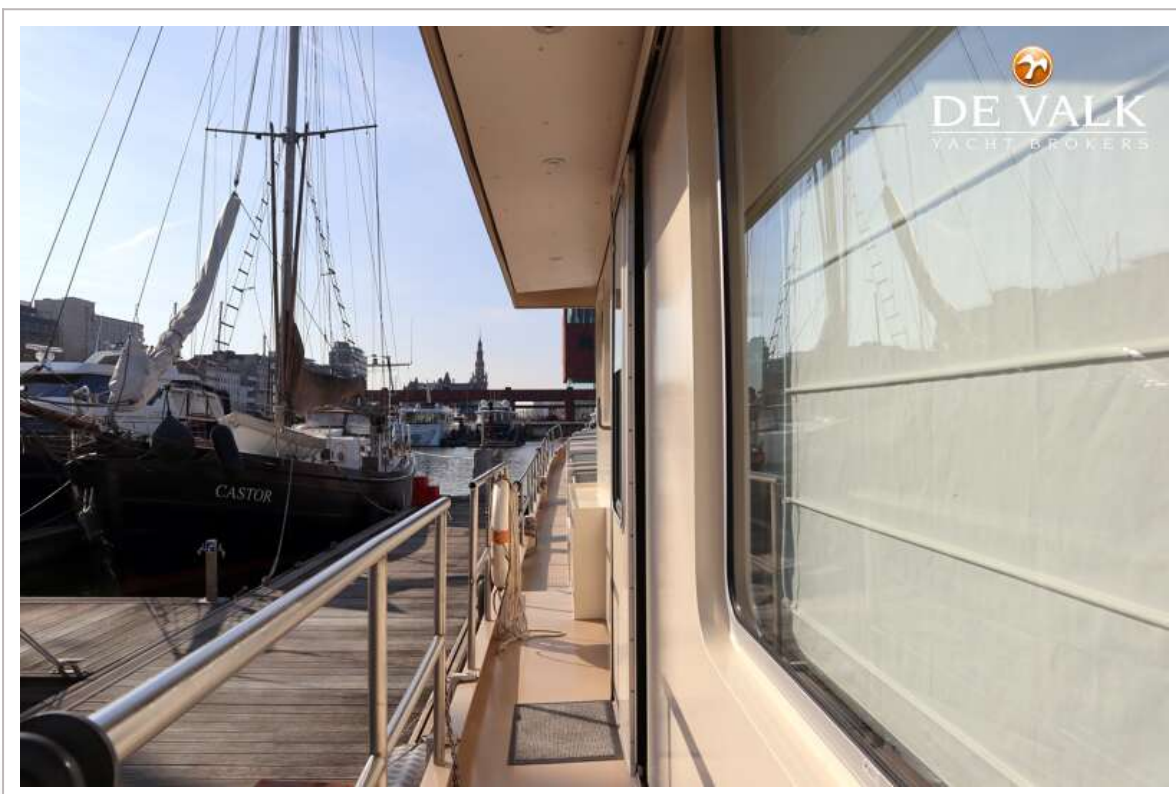
LUXE MOTOR STEILSTEVEN 28M MS STEILVOL



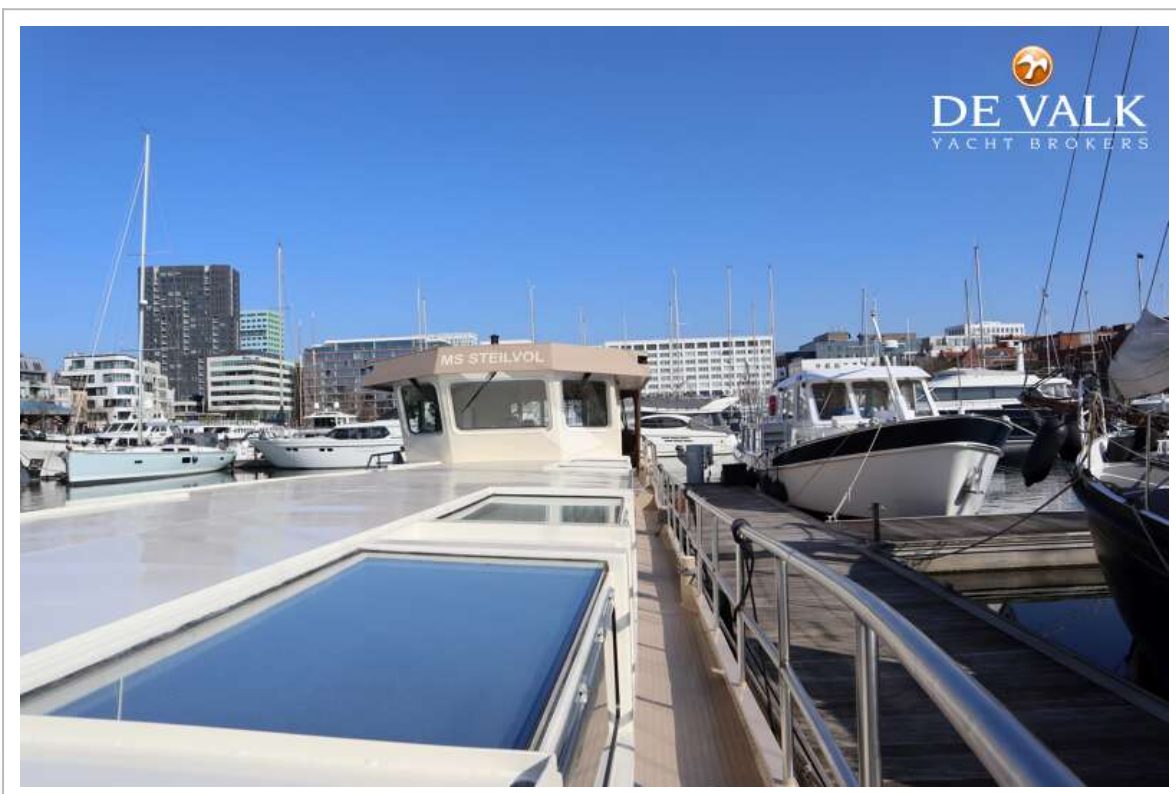
LUXE MOTOR STEILSTEVEN 28M MS STEILVOL



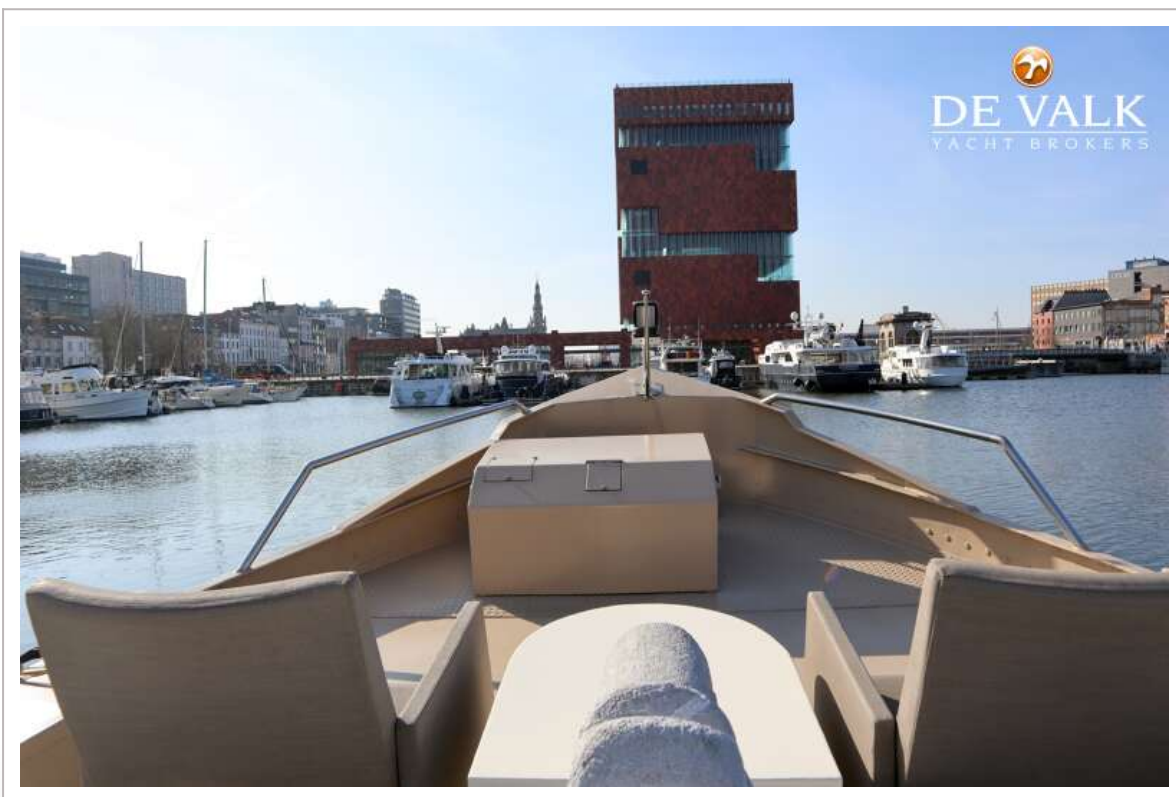
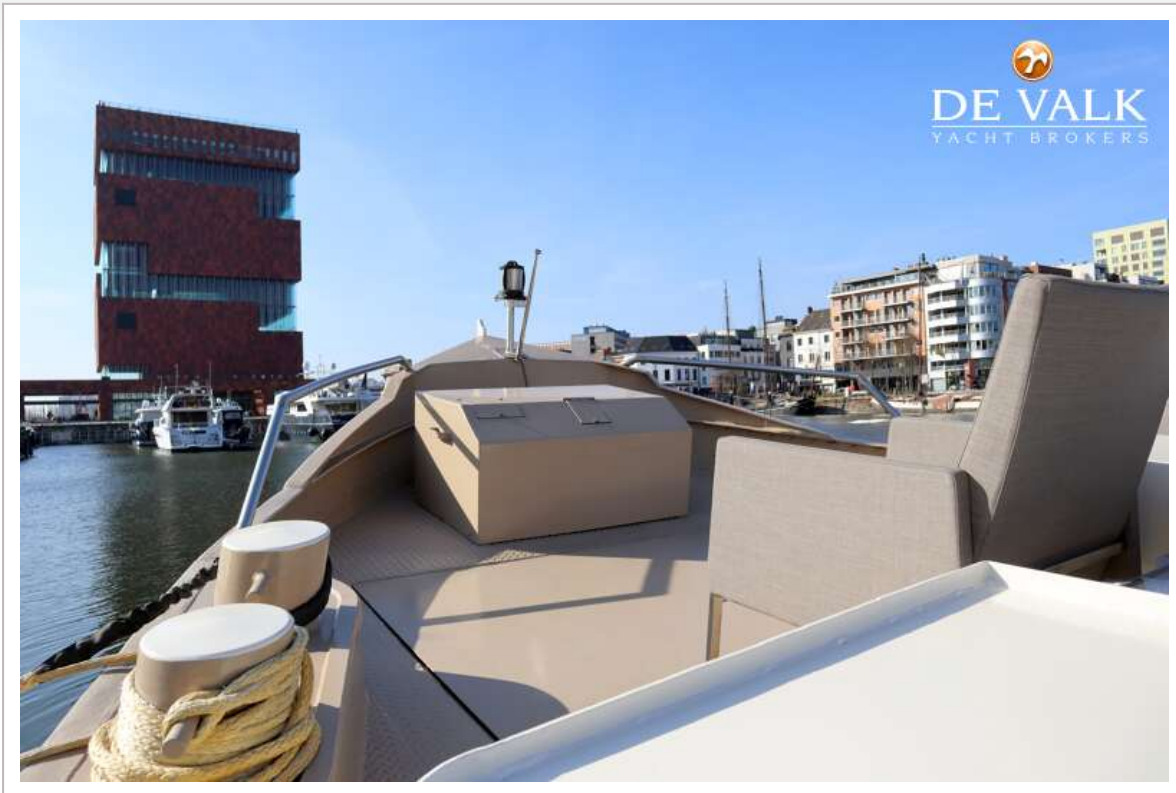
LUXE MOTOR STEILSTEVEN 28M MS STEILVOL



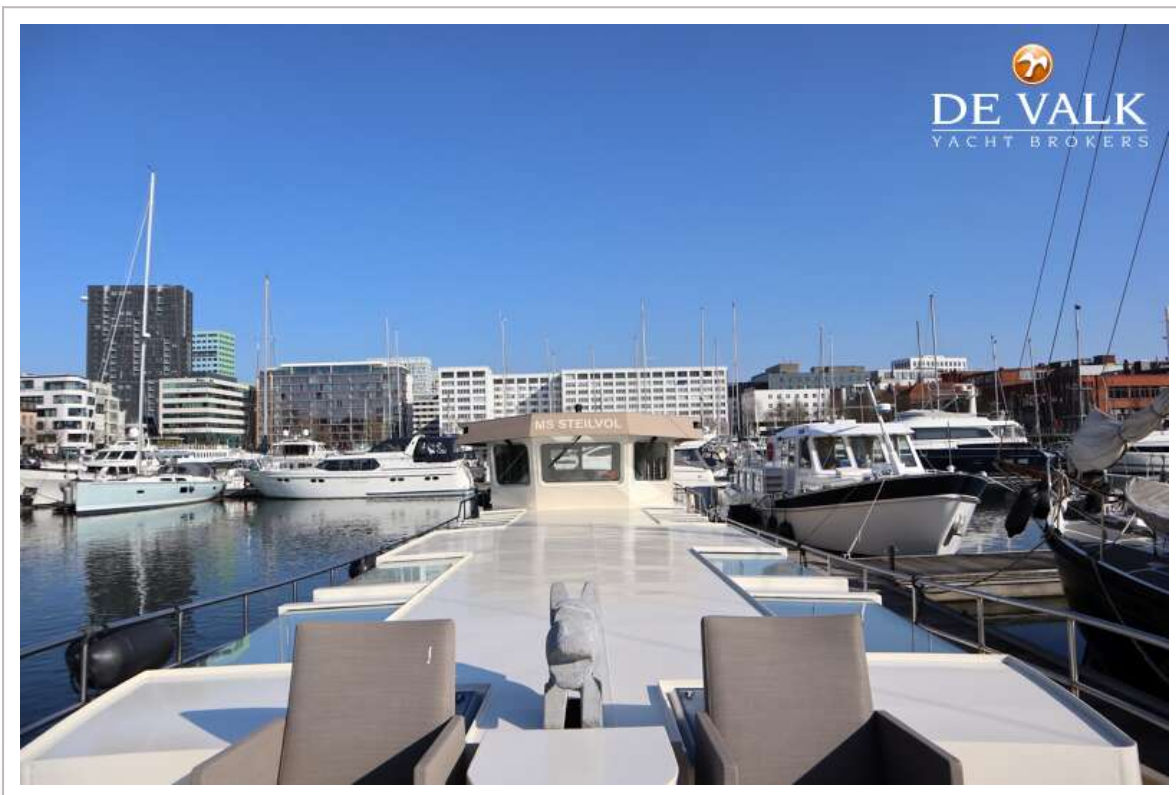
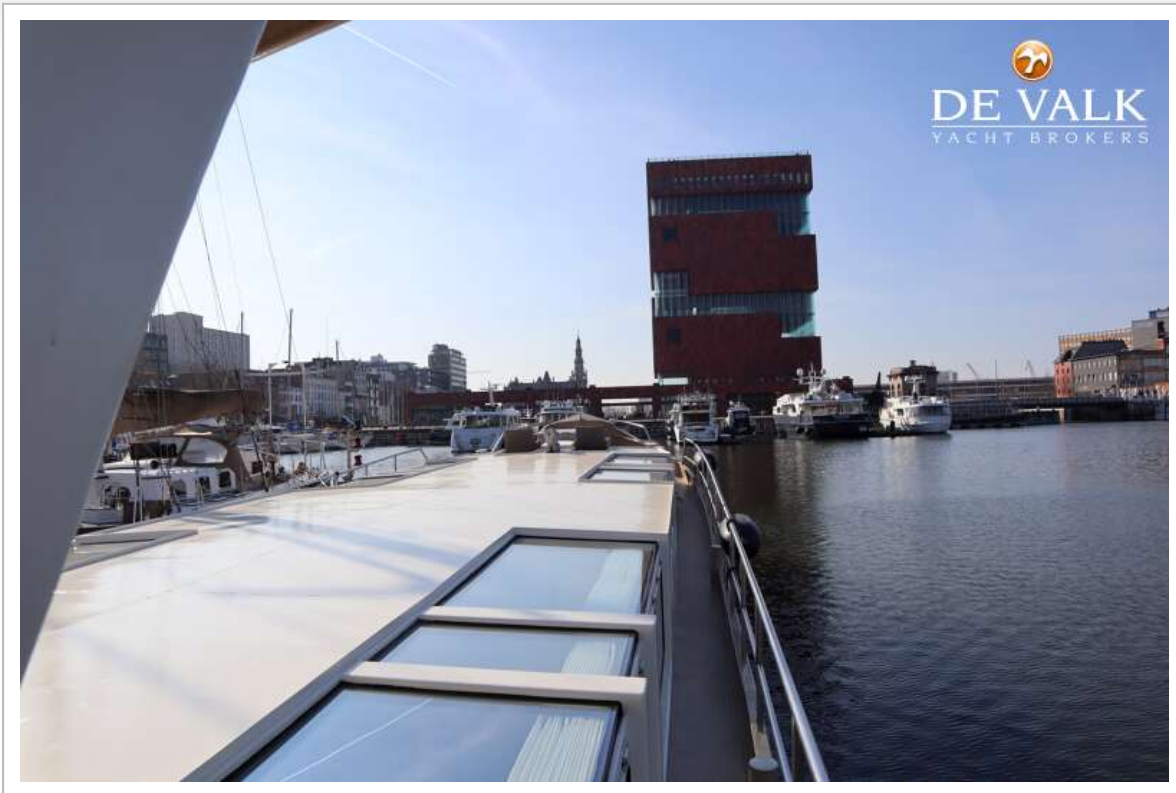
LUXE MOTOR STEILSTEVEN 28M MS STEILVOL



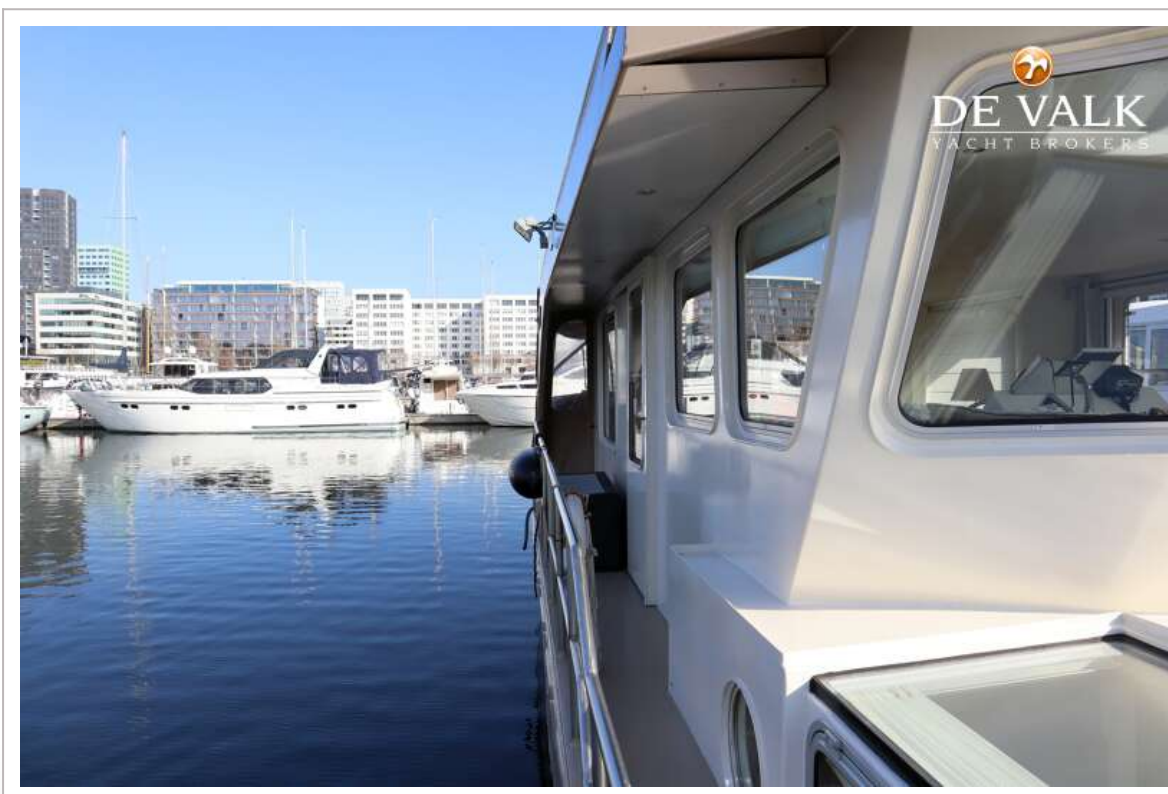
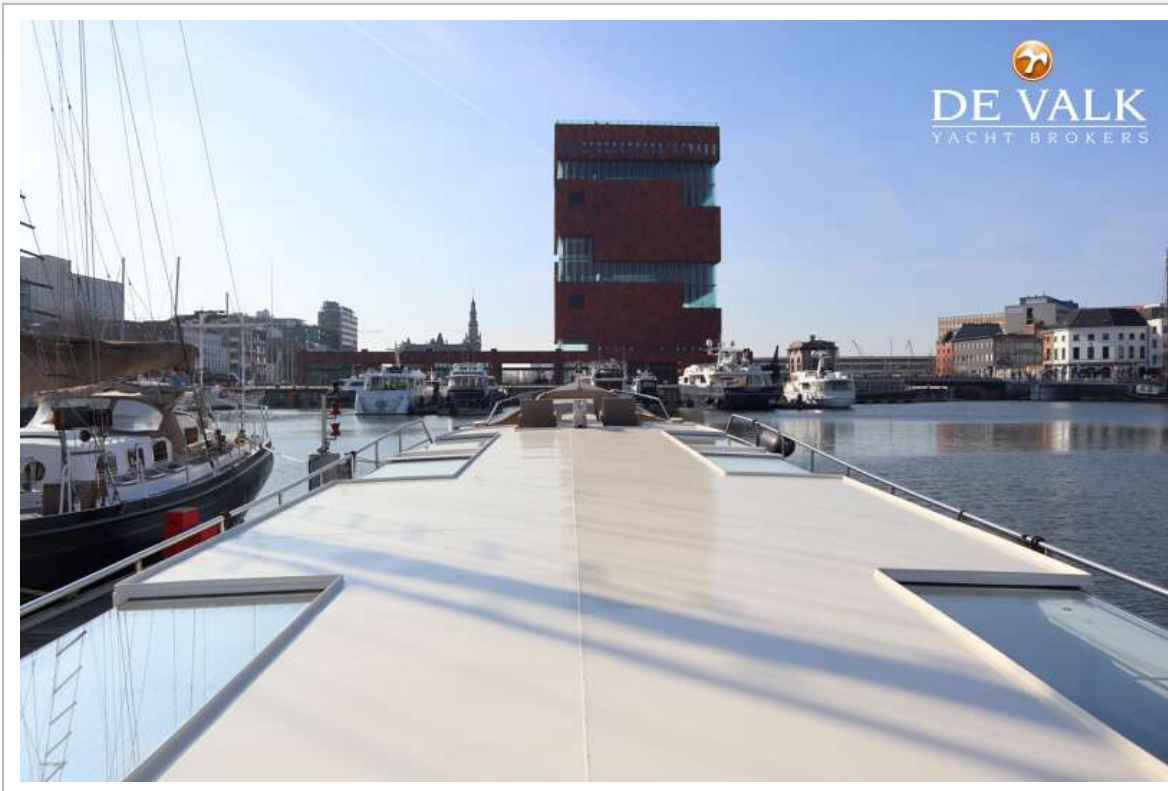
LUXE MOTOR STEILSTEVEN 28M MS STEILVOL



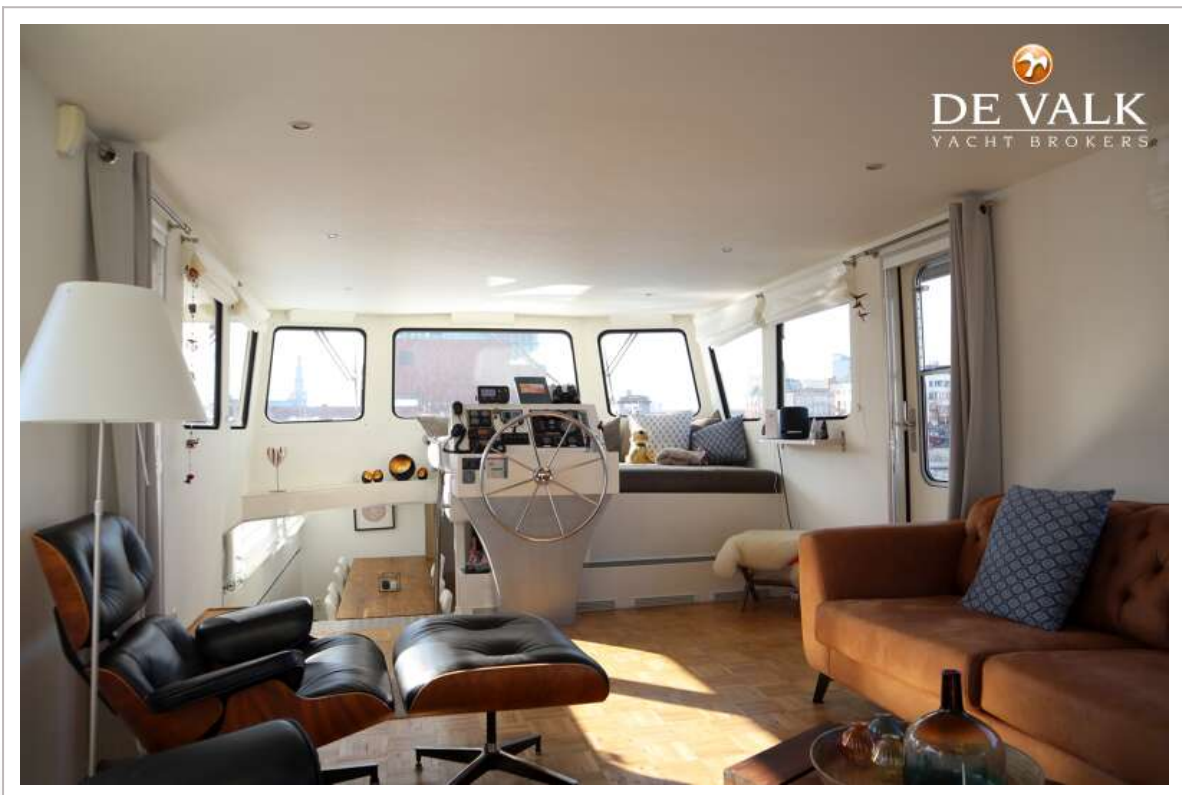
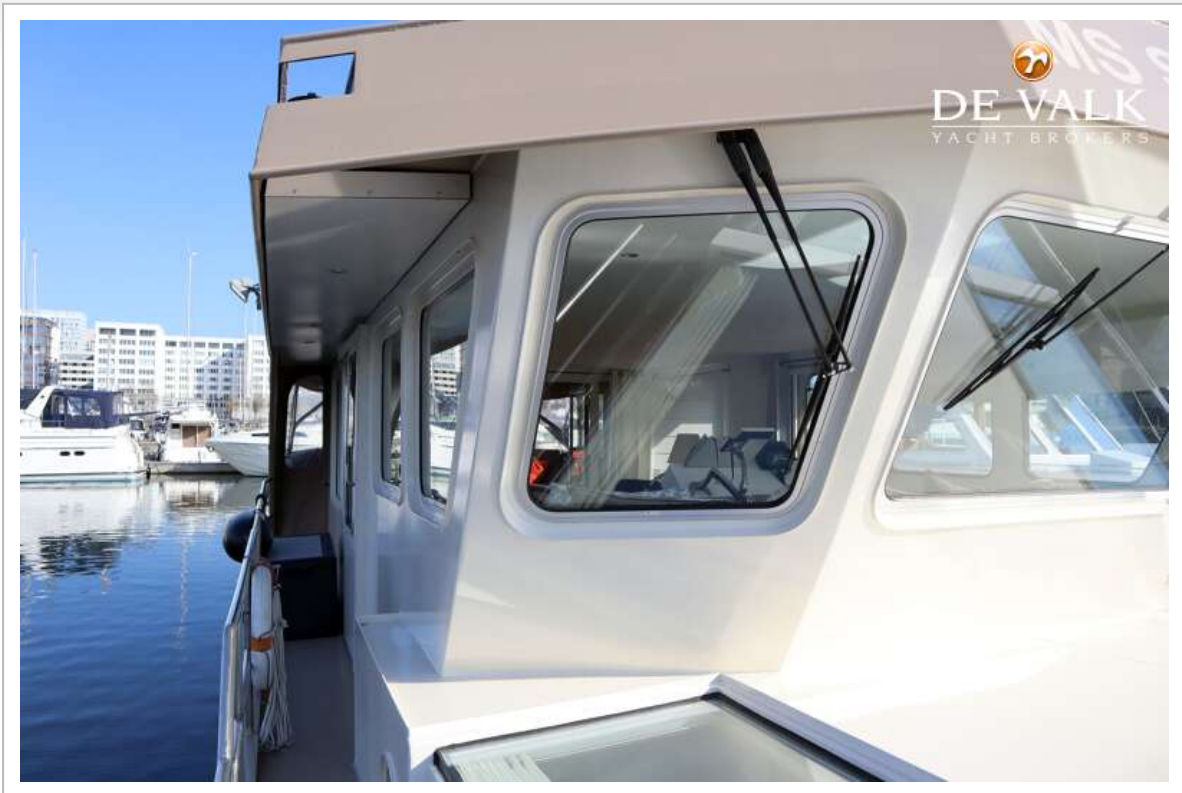
LUXE MOTOR STEILSTEVEN 28M MS STEILVOL



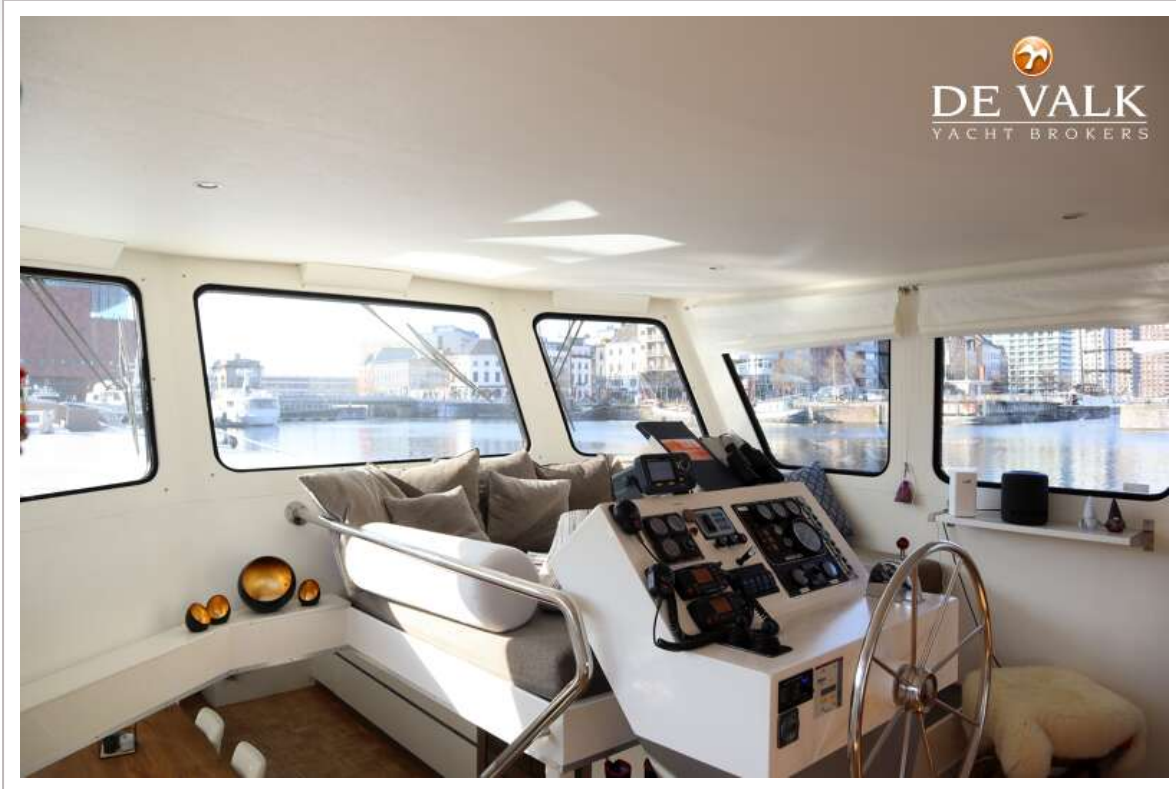
LUXE MOTOR STEILSTEVEN 28M MS STEILVOL



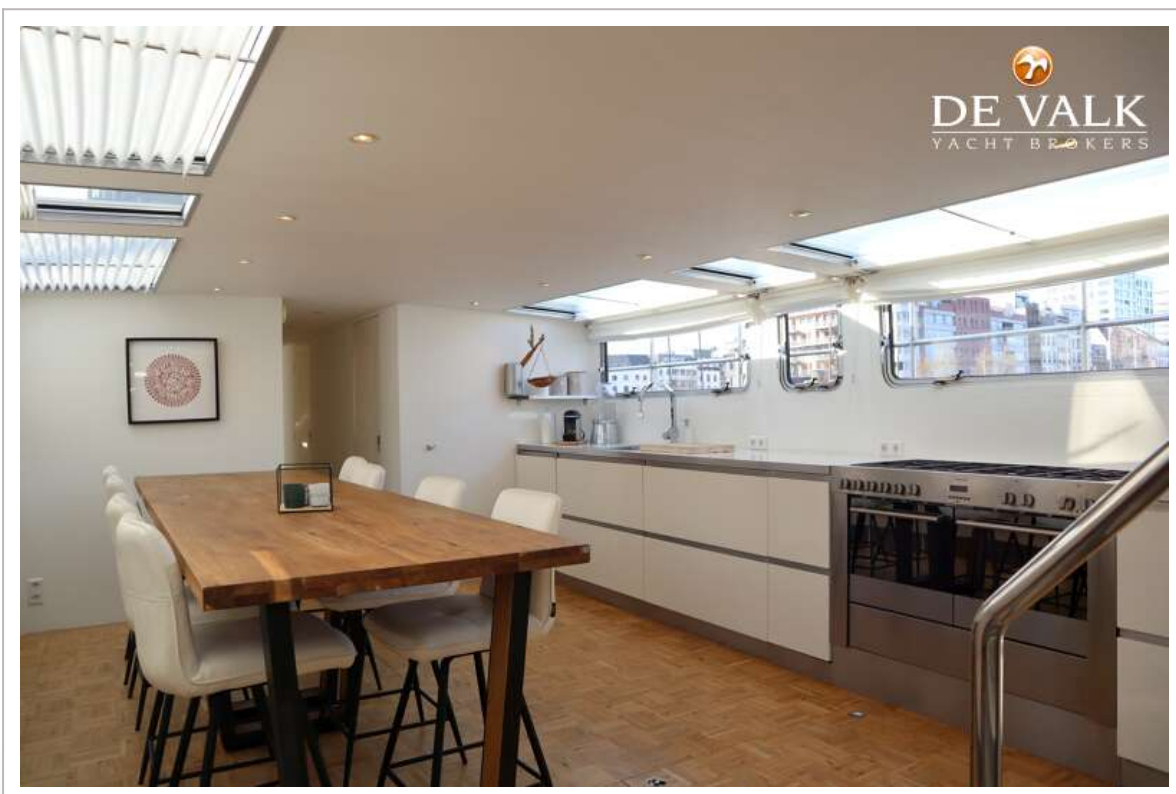
LUXE MOTOR STEILSTEVEN 28M MS STEILVOL



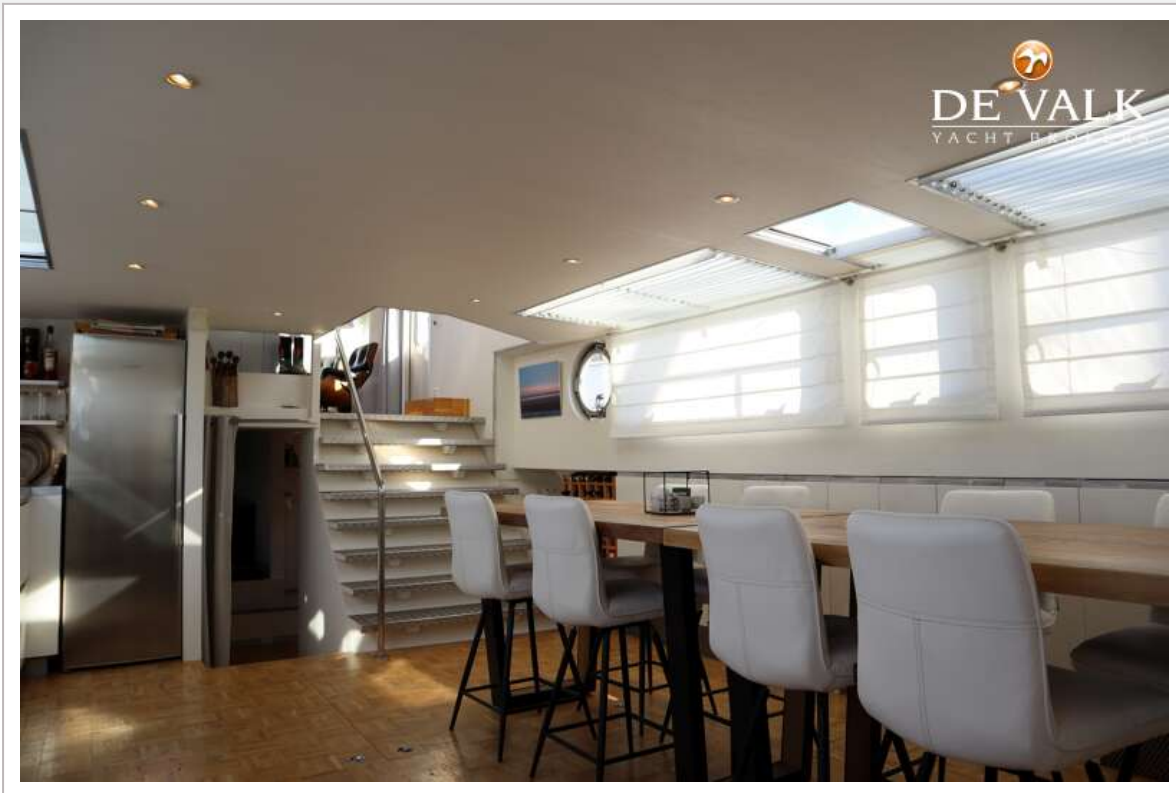
LUXE MOTOR STEILSTEVEN 28M MS STEILVOL



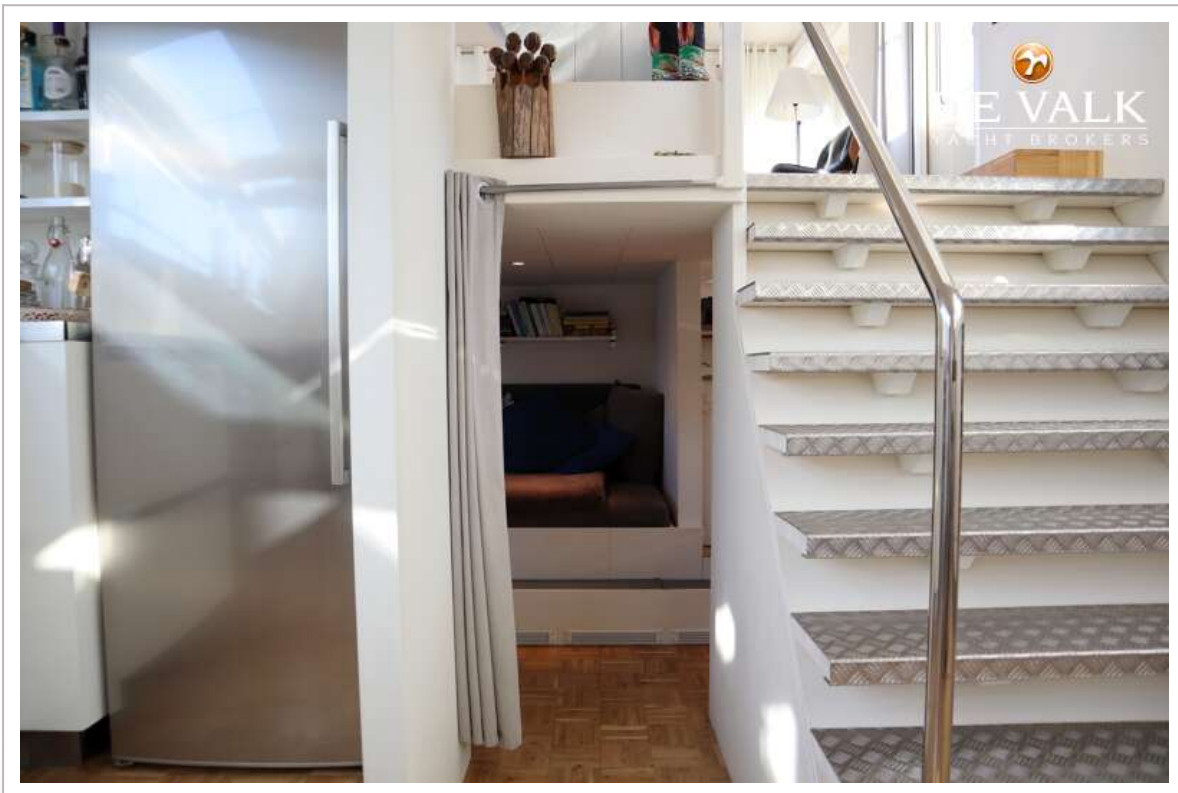
LUXE MOTOR STEILSTEVEN 28M MS STEILVOL



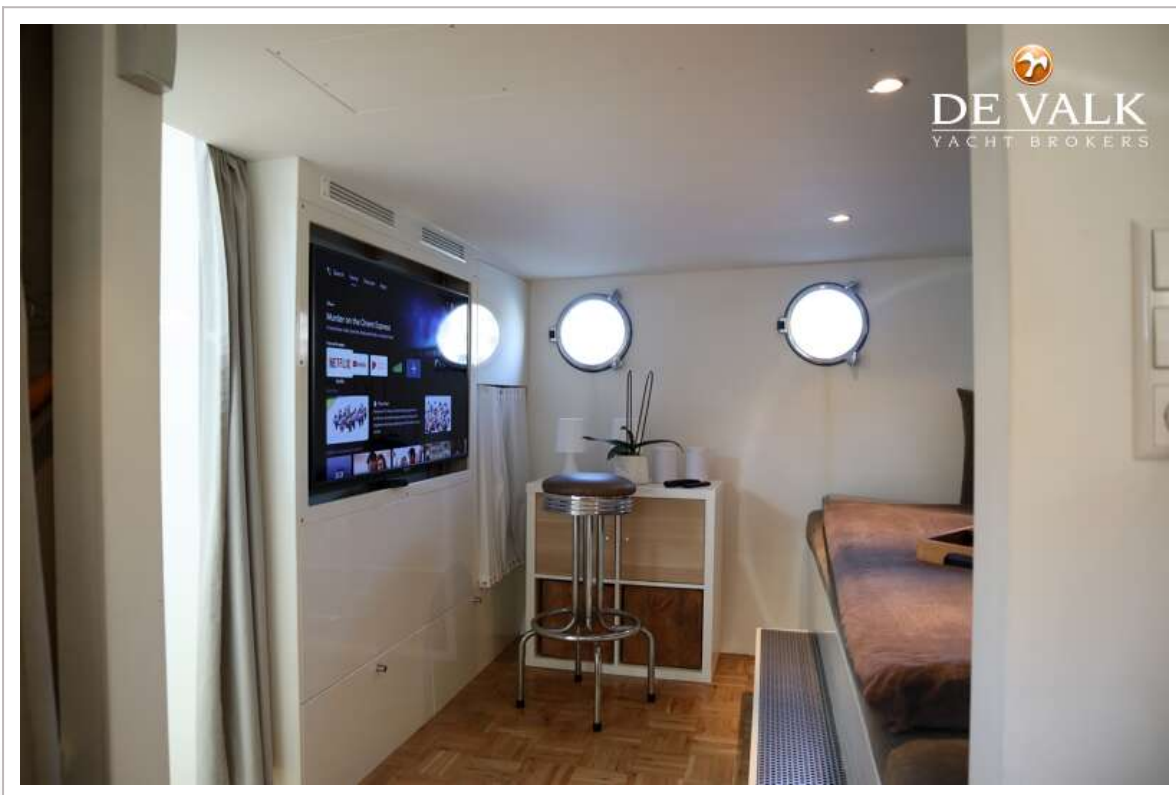
LUXE MOTOR STEILSTEVEN 28M MS STEILVOL



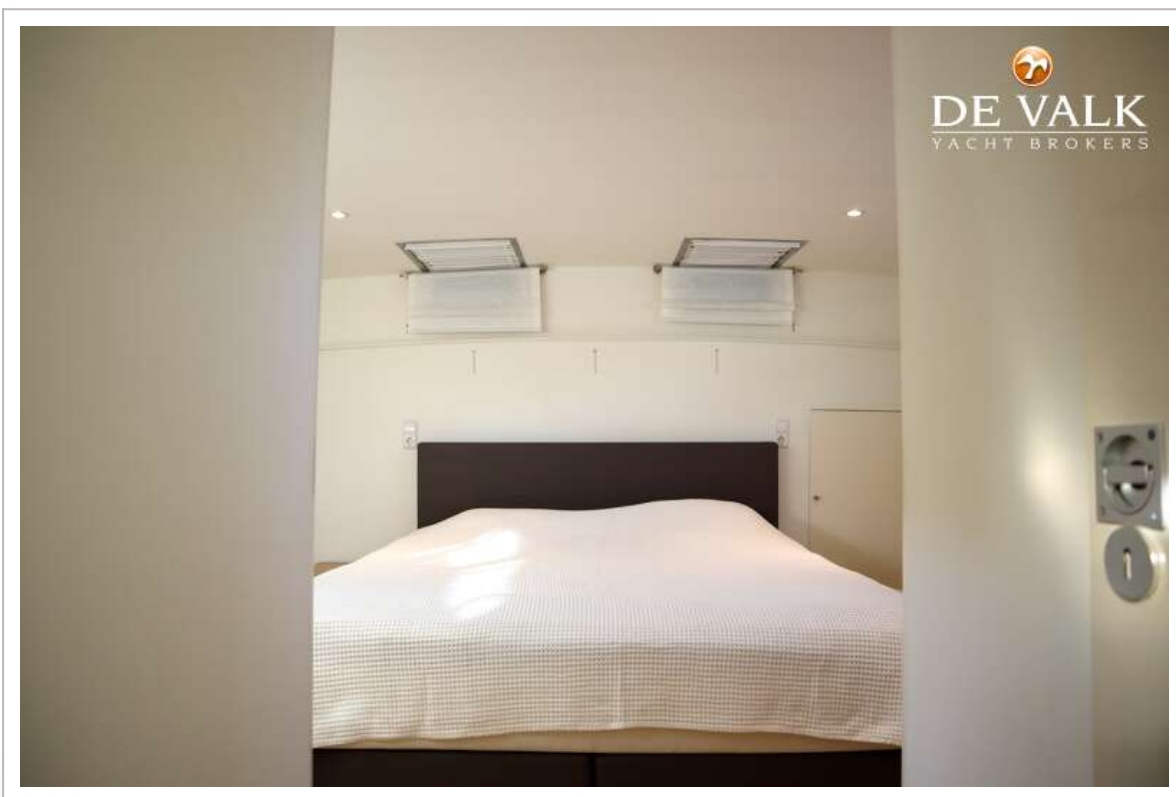
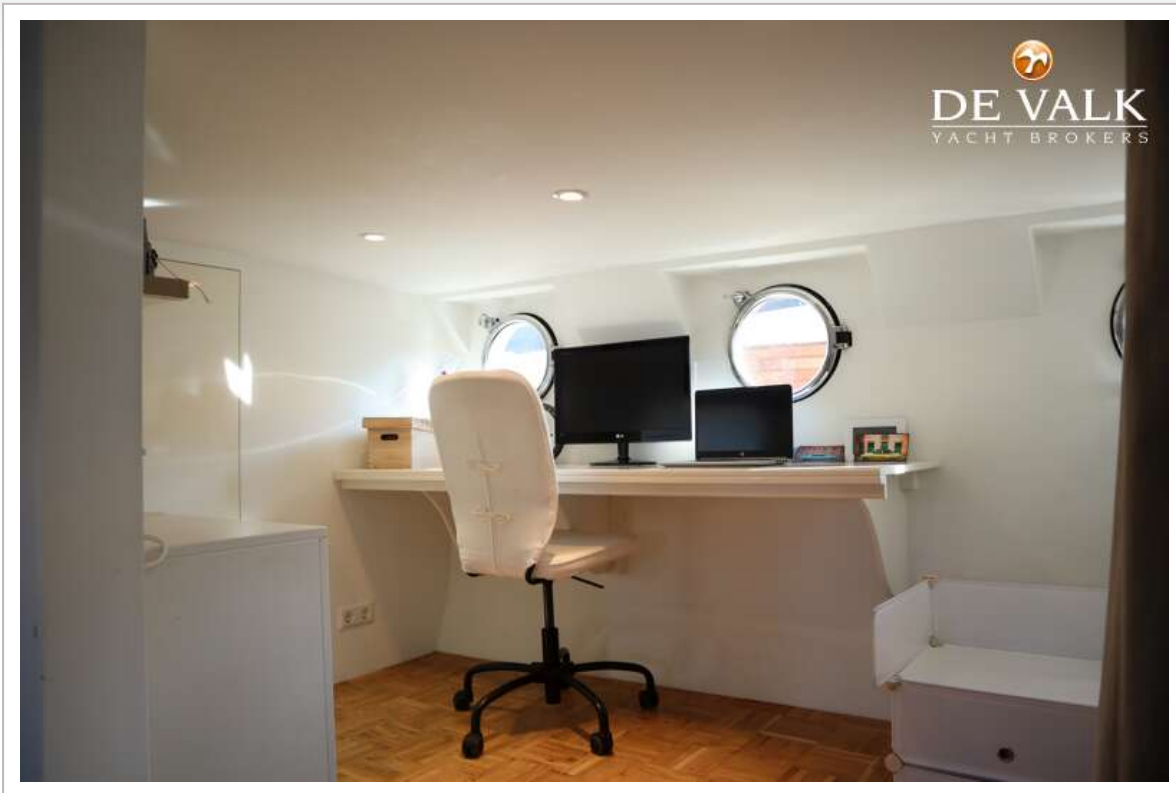
LUXE MOTOR STEILSTEVEN 28M MS STEILVOL



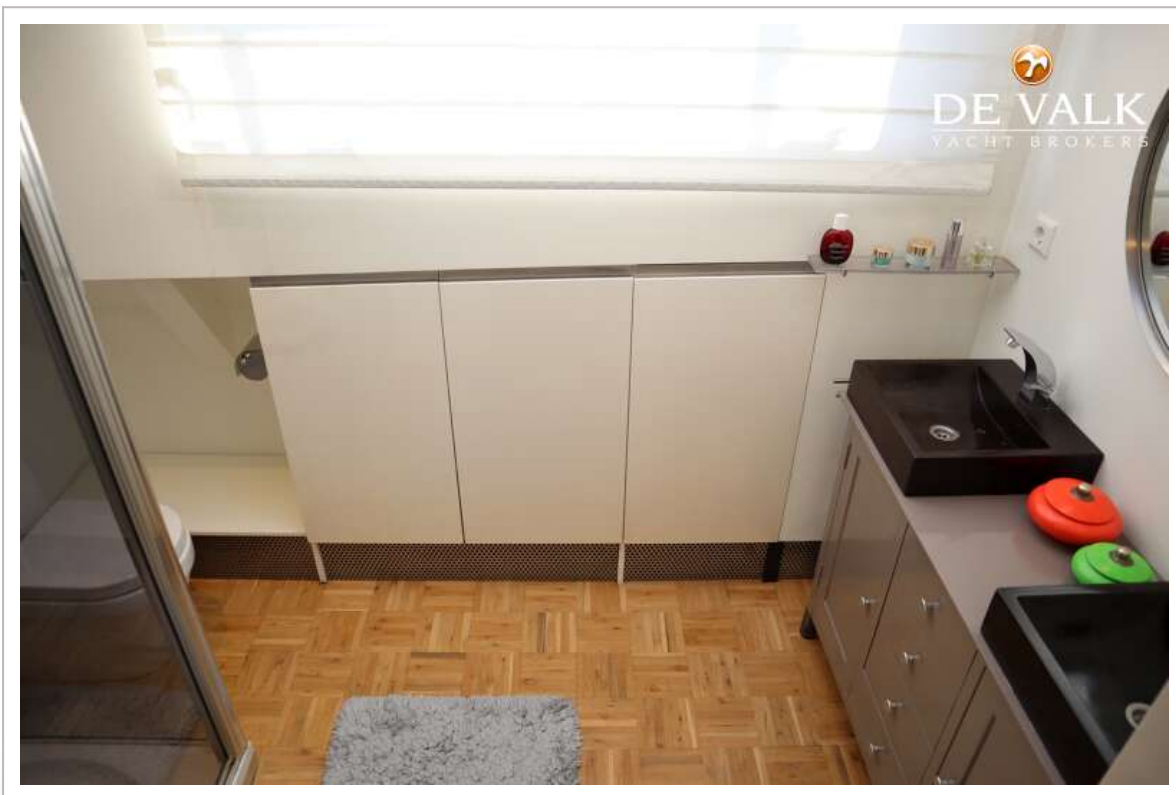
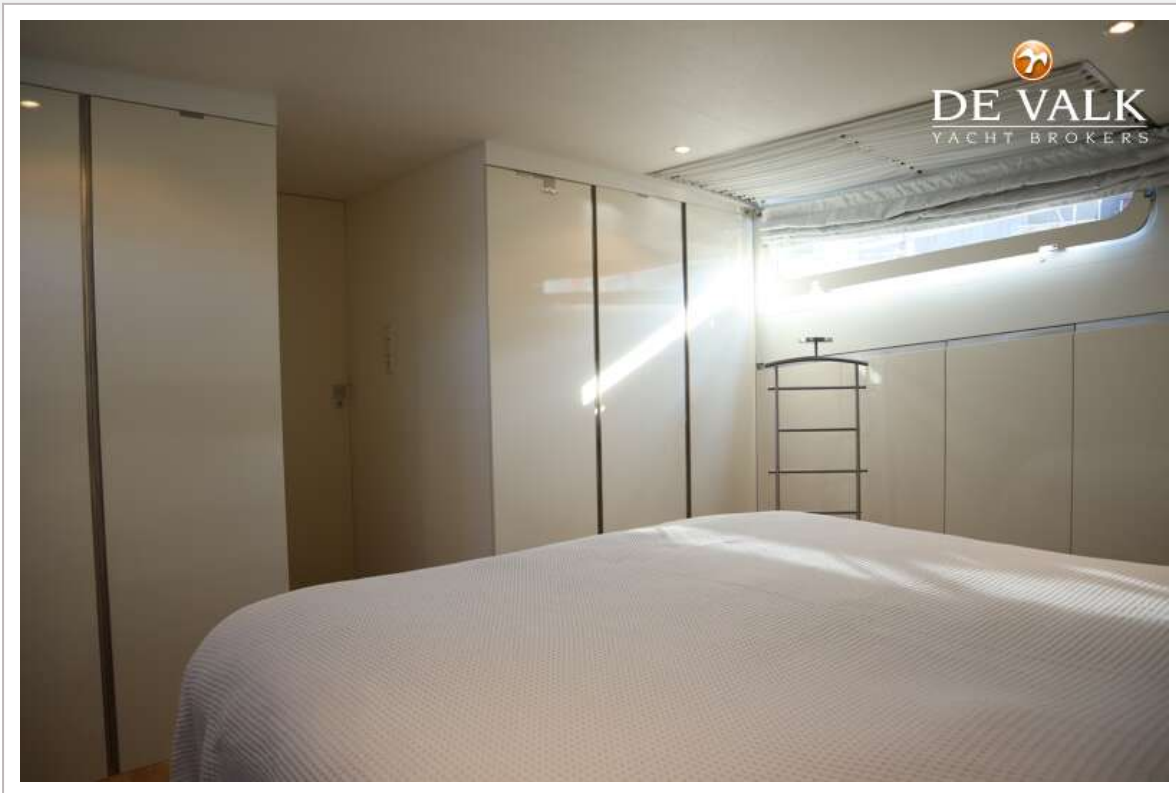
LUXE MOTOR STEILSTEVEN 28M MS STEILVOL



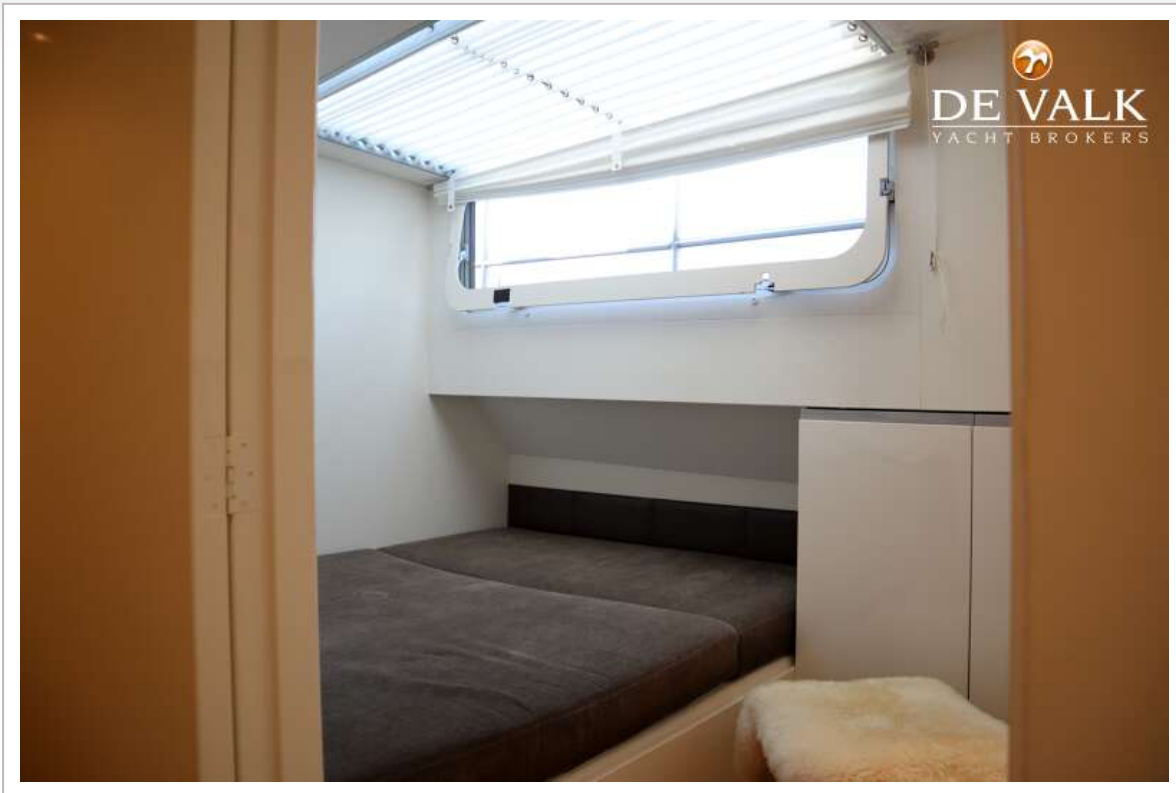
LUXE MOTOR STEILSTEVEN 28M MS STEILVOL



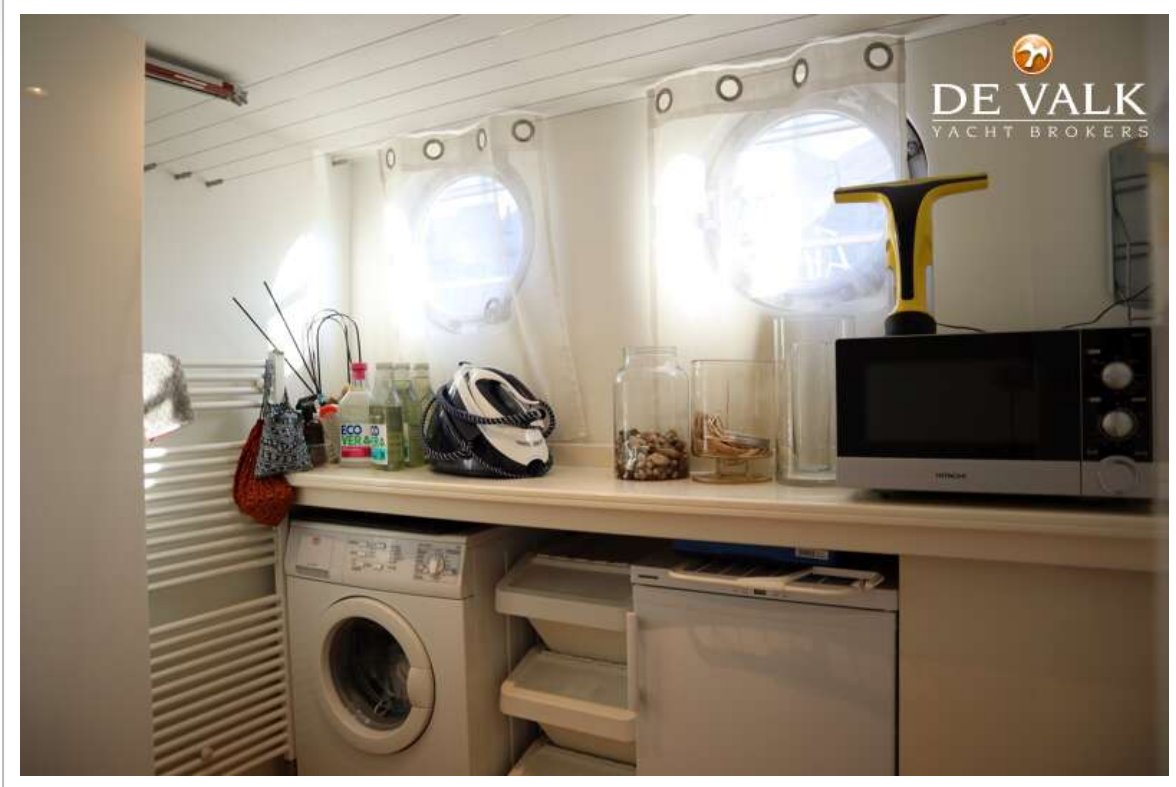
LUXE MOTOR STEILSTEVEN 28M MS STEILVOL



LUXE MOTOR STEILSTEVEN 28M MS STEILVOL



LUXE MOTOR STEILSTEVEN 28M MS STEILVOL



LUXE MOTOR STEILSTEVEN 28M MS STEILVOL



LUXE MOTOR STEILSTEVEN 28M MS STEILVOL



