



DE VALK  
YACHT BROKERS



## NEPTUNUS 196 FLYBRIDGE



DE VALK  
YACHT BROKERS

# NEPTUNUS 196 FLYBRIDGE

## BROKER'S COMMENTS

This Neptunus 196 Flybridge, built in the 90's by the Dutch Neptunus shipyard, is a spacious flybridge motor yacht with spacious accommodation for up to eight guests in four cabins, all with their own bathroom. The huge saloon and aft deck are ideal for lounging or entertaining. Ideal for long range cruising or even living aboard. Contact us to make an appointment for viewing this Neptunus 196.

*Nick Lanting*

## SPECIFICATIONS

<b>Dimensions</b>	19.80 x 5.35 x 1.35 (m)	<b>Builder</b>	Neptunus
<b>Built</b>	1991	<b>Cabins</b>	4
<b>Material</b>	GRP	<b>Berths</b>	10
<b>Engine(s)</b>	2 x MAN diesel	<b>Hp/Kw</b>	2 x 850.00 (hp), 625.60 (kw)
<b>Asking price</b>	€ 229.000 (VAT Paid)	<b>Lying</b>	The Netherlands

## CONTACT

<b>Sales office</b>	De Valk Thuishaven	<b>Telephone</b>	+31 35 5829042
<b>Address</b>	Marinaweg 8 1361 AC Almere NL	<b>E-mail</b>	thuishaven@devalk.nl

## DISCLAIMER

These particulars are given in good faith as supplied but cannot be guaranteed.



# NEPTUNUS 196 FLYBRIDGE

## GENERAL

<b>Model</b>	NEPTUNUS 196 FLYBRIDGE
<b>Type</b>	motor yacht
<b>LOA (m)</b>	19,80
<b>Beam (m)</b>	5,35
<b>Draft (m)</b>	1,35
<b>Air draft (m)</b>	6,50
<b>Headroom (m)</b>	1,91
<b>Year built</b>	1991
<b>Builder</b>	Neptunus
<b>Country</b>	The Netherlands
<b>Displacement (t)</b>	32
<b>CE norm</b>	NA
<b>Hull material</b>	GRP
<b>Hull colour</b>	white
<b>Hull shape</b>	multi hard chine
<b>Superstructure material</b>	GRP
<b>Rubbing strake</b>	yes
<b>Deck material</b>	GRP
<b>Deck finish</b>	teak Needs maintenance
<b>Superstructure deck finish</b>	non-skid moulded in
<b>Cockpit deck finish</b>	teak
<b>Antifouling (year)</b>	yes
<b>Window frame</b>	aluminium
<b>Window material</b>	glass
<b>Deckhatch</b>	1x
<b>Portholes</b>	stainless steel
<b>Flybridge</b>	yes
<b>Flybridge cockpit cover</b>	yes
<b>Radar arch</b>	yes
<b>Fuel tank (litre)</b>	5000



# NEPTUNUS 196 FLYBRIDGE

Level indicator (fuel tank)	yes
Freshwater tank (litre)	1200
Level indicator (freshwater)	yes
Wheel steering	hydraulic
Inside helm position	yes
Flybridge helm position	hydraulic
Extra info	This boat has no CVO or CVO measurement.

## ACCOMMODATION

Cabins	4
Berths	10
Floor	carpet
Aft deck	yes
Deck saloon	yes
Saloon	yes
Headroom saloon (m)	1,91
Heating	diesel ducted hot air Eberspächer
Chart table	yes
Aft Cabin	yes
Dinette	yes
Sliding door to cockpit	yes
Sliding door to aft deck	Doesn't open, lock needs repair
Galley	yes
Countertop	plastic
Sink	Plastic
Cooker	electric Edesa 4-burner
Extractor	Zanussi
Microwave/oven combi	Samsung
Fridge	Lynx, full height
Freezer	In fridge
Hot water system	220V + engine



# NEPTUNUS 196 FLYBRIDGE

Water pressure system	electrical
Dishwasher	Indesit
Coffee maker	yes
Crockery	yes
Owners cabin	French bed Midships
Bed length (m)	2,10 x 1,40
Wardrobe	hanging/drawers/shelves
Bathroom	en suite Headroom 1,91m
Toilet	In bathroom
Toilet system	electric
Wash basin	in the bathroom
Shower	separate In bathroom, headroom 1,89m
Extra info	Headroom 1,91m
Guest cabin 1	double bed Forward
Bed length (m)	2,00 x 1,40
Wardrobe	hanging and shelves
Bathroom	en suite Headroom 2,00m
Toilet	In bathroom
Toilet system	electric
Wash basin	in the bathroom
Shower	separate In bathroom, headroom 1,97m
Extra info	Headroom 1,98m
Guest cabin 2	bunk bed Starboard
Bed length (m)	2,00 x 0,80, 2,00 x 0,70
Wardrobe	drawers and shelves
Bathroom	separate
Toilet	In bathroom
Toilet system	electric
Wash basin	in the bathroom
Shower	In bathroom
Extra info	Headroom 1,99m
Guest cabin 3	French bed Aft



# NEPTUNUS 196 FLYBRIDGE

<b>Bed length (m)</b>	2,05 x 1,40
<b>Wardrobe</b>	hanging/drawers/shelves
<b>Bathroom</b>	En suite, headroom 1,91m
<b>Toilet</b>	In bathroom
<b>Toilet system</b>	electric
<b>Wash basin</b>	in the bathroom
<b>Shower</b>	In bathtub, headroom 1,86m
<b>Extra info</b>	Headroom 1,89m
<b>Washing machine/dryer combi</b>	Eumenia Sparmeister 800
<b>Flybridge</b>	yes

## MACHINERY

<b>No of engines</b>	2
<b>Make</b>	MAN
<b>HP</b>	850
<b>kW</b>	625.60
<b>Fuel</b>	diesel
<b>Year installed</b>	1991
<b>Maximum speed (kn)</b>	25
<b>Cruising speed (kn)</b>	21
<b>Engine hours</b>	1040 (port), 1036 (stbd)
<b>Engine cooling system</b>	freshwater heat exchanger
<b>Drive</b>	shaft
<b>Shaft seal</b>	yes
<b>Engine controls</b>	hydraulic
<b>Gearbox</b>	hydraulic
<b>Bowthruster</b>	electric
<b>Exhaust</b>	watercooled
<b>Propeller type</b>	fixed
<b>Propeller shaft material</b>	stainless steel
<b>Shaft lubrication</b>	water



# NEPTUNUS 196 FLYBRIDGE

Electric bilge pump	yes
Electrical installation	12 V, 24 V, 230 V
Generator	Fischer Panda
Running hours generator	406
Batteries	yes
Battery monitor	yes
Battery charger	With Victron Skylla Control
Shorepower	with cable

## NAVIGATION

Compass	2 x
Compass on flybridge	yes
Electric compass	In autopilot
Depth sounder	yes
Log	yes
VHF	Skanti
Autopilot	Furuno FAP-55
Rudder angle indicator	yes
Radar	Furuno 2x
GPS	Furuno GP-500
Plotter/GPS	Raytheon 620
Navtex	Furuno NX-500
Navigation lights	yes
Searchlight	Sanshin
Loudhailer	yes

## EQUIPMENT

Fixed windscreen	yes
Cockpit cover	yes
Cockpit table	Teak
Cockpit chairs	Teak, 6x



# NEPTUNUS 196 FLYBRIDGE

<b>Bathing platform</b>	yes
<b>Boarding ladder</b>	stainless steel
<b>Gangway</b>	Opacmare
<b>Deck shower</b>	yes
<b>Anchor</b>	yes
<b>Anchor chain</b>	yes
<b>Windlass</b>	electrical
<b>Capstan</b>	On windlass
<b>Sea railing</b>	stainless steel
<b>Pulpit</b>	yes
<b>Wiper</b>	2x
<b>Horn</b>	electric
<b>Fenders</b>	yes
<b>Mooring lines</b>	yes
<b>TV</b>	LG 80cm, in saloon
<b>Radio</b>	yes
<b>Sub-woofer</b>	yes
<b>Cockpit speakers</b>	Aft deck
<b>Speakers in salon</b>	yes
<b>Clock - barometer</b>	yes
<b>Fire extinguisher</b>	yes
<b>Latest extinguisher survey</b>	Unknown



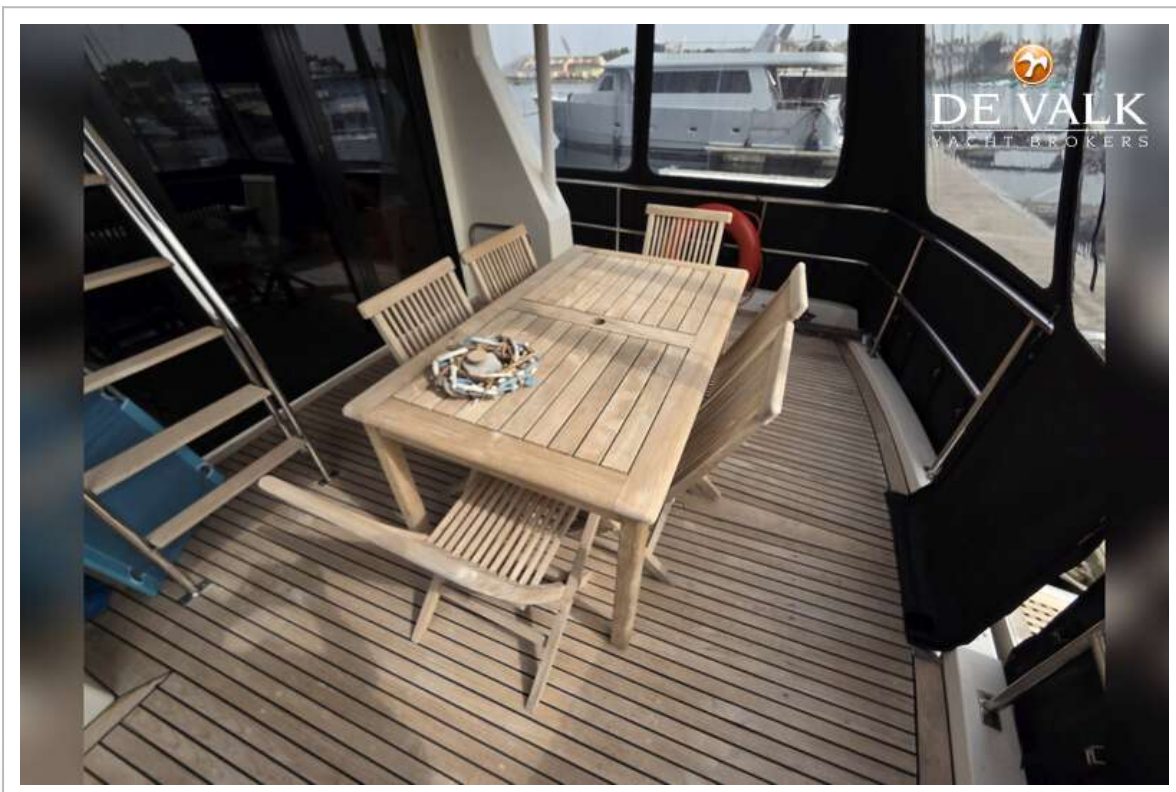
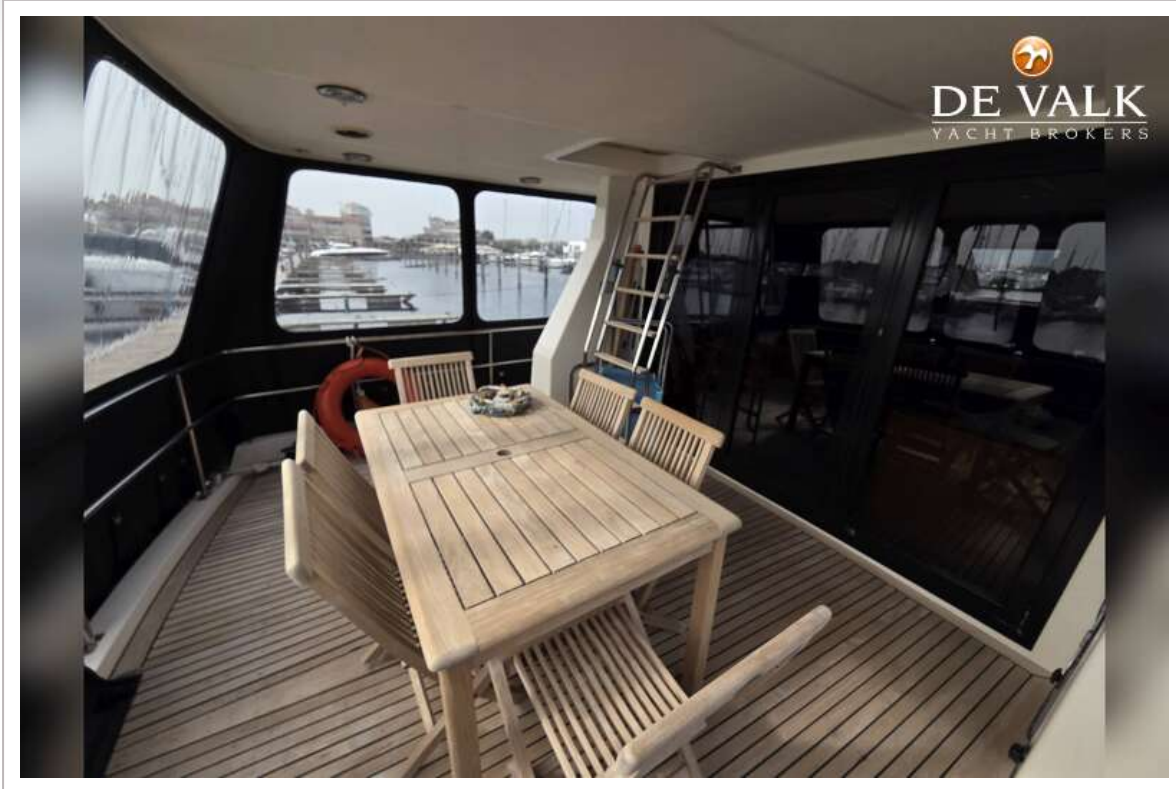
# NEPTUNUS 196 FLYBRIDGE



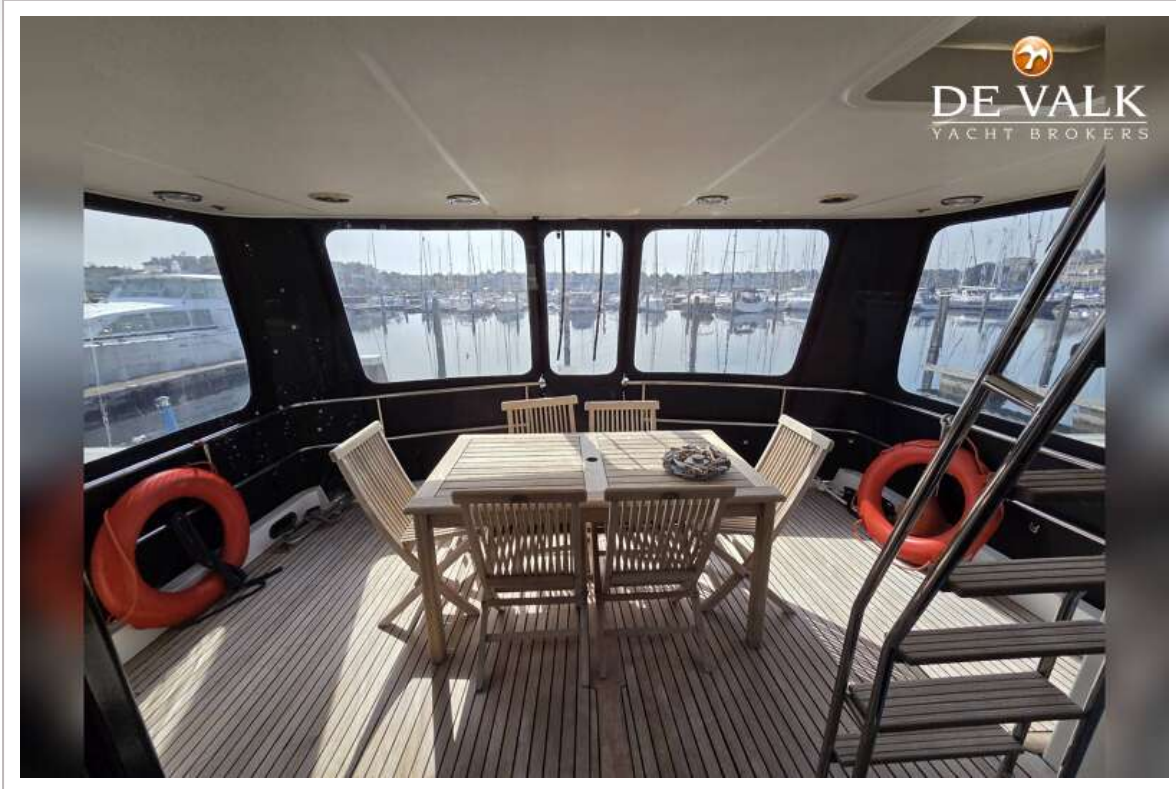
# NEPTUNUS 196 FLYBRIDGE



# NEPTUNUS 196 FLYBRIDGE



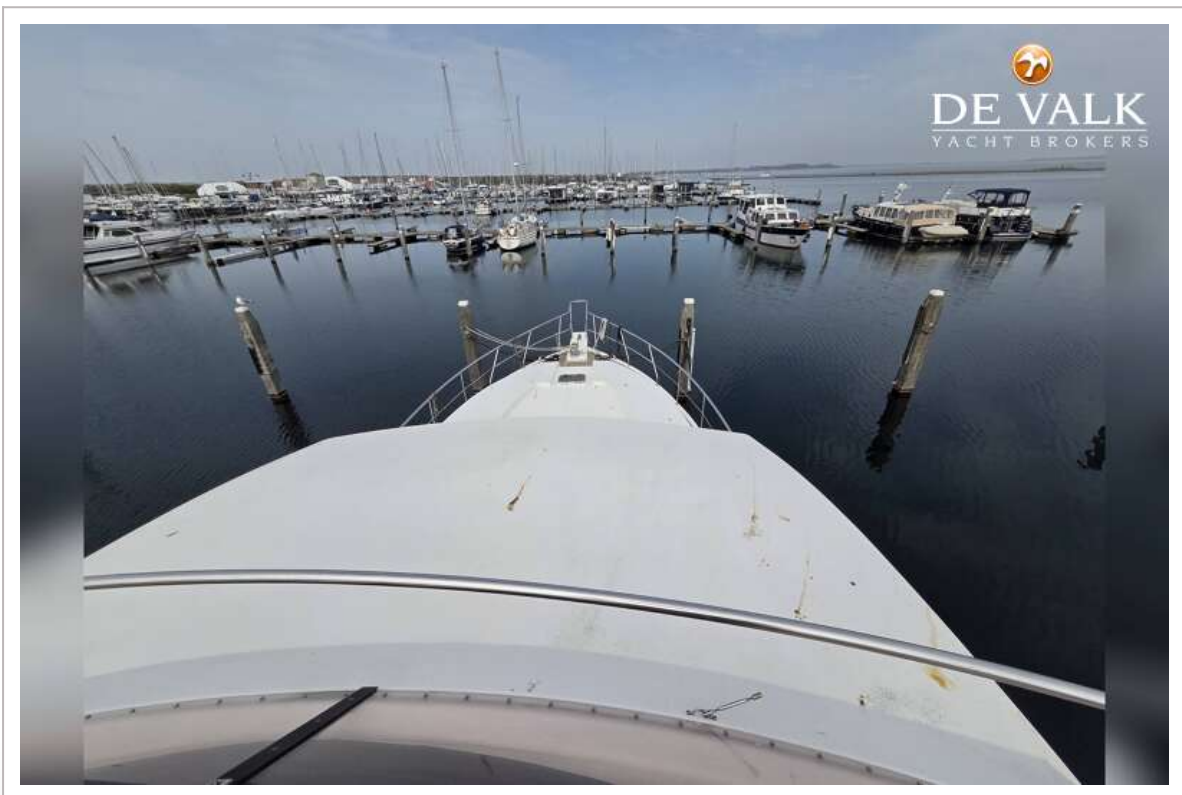
# NEPTUNUS 196 FLYBRIDGE



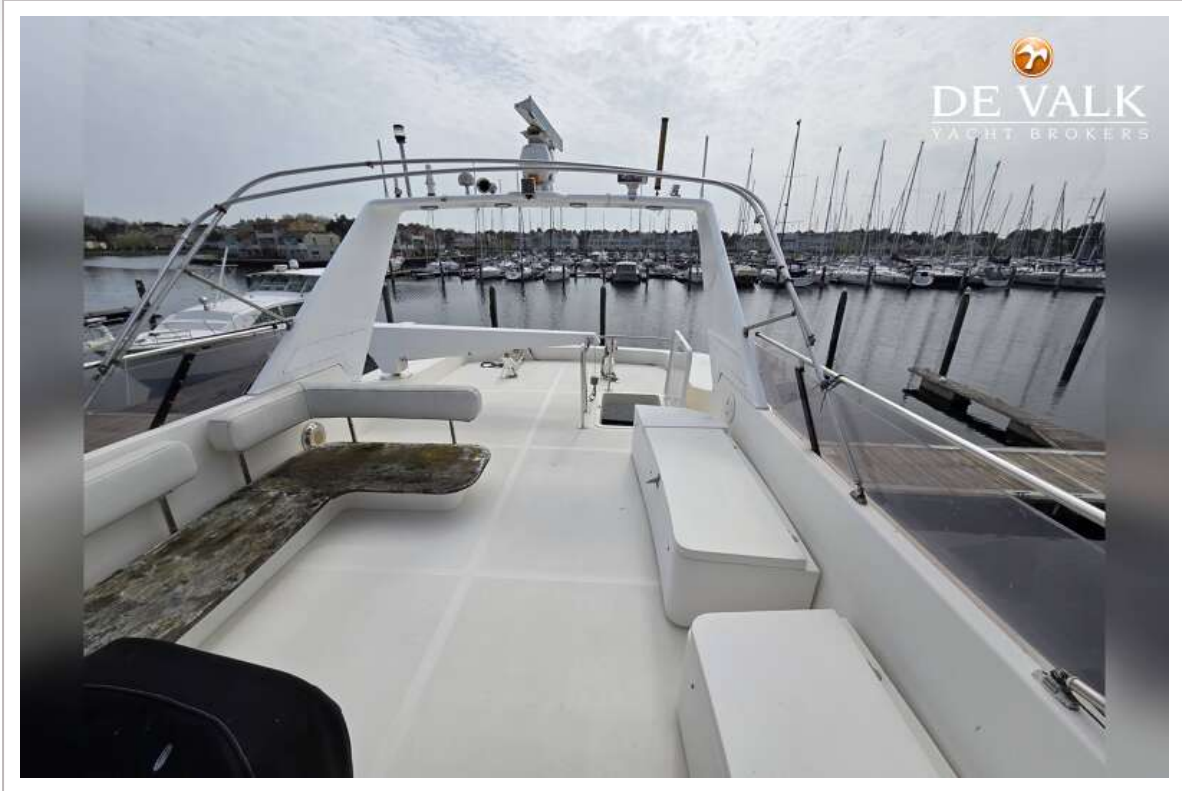
# NEPTUNUS 196 FLYBRIDGE



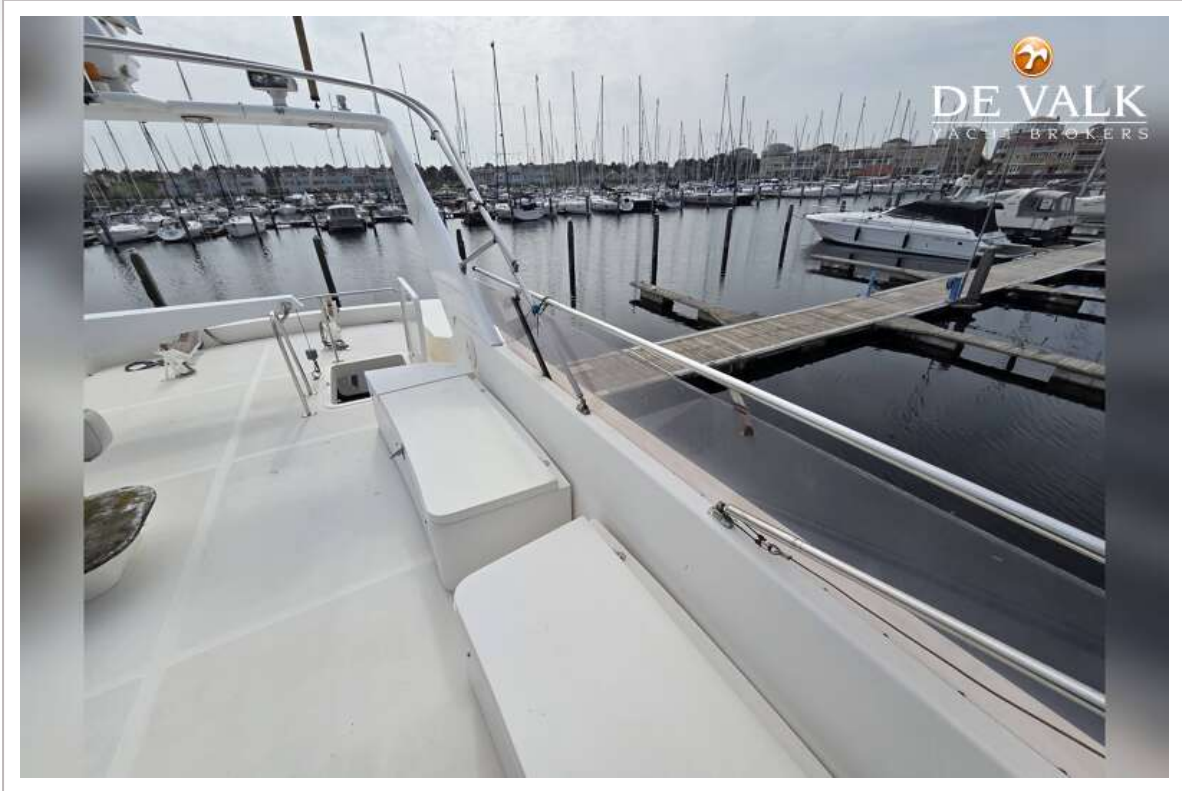
# NEPTUNUS 196 FLYBRIDGE



# NEPTUNUS 196 FLYBRIDGE



# NEPTUNUS 196 FLYBRIDGE



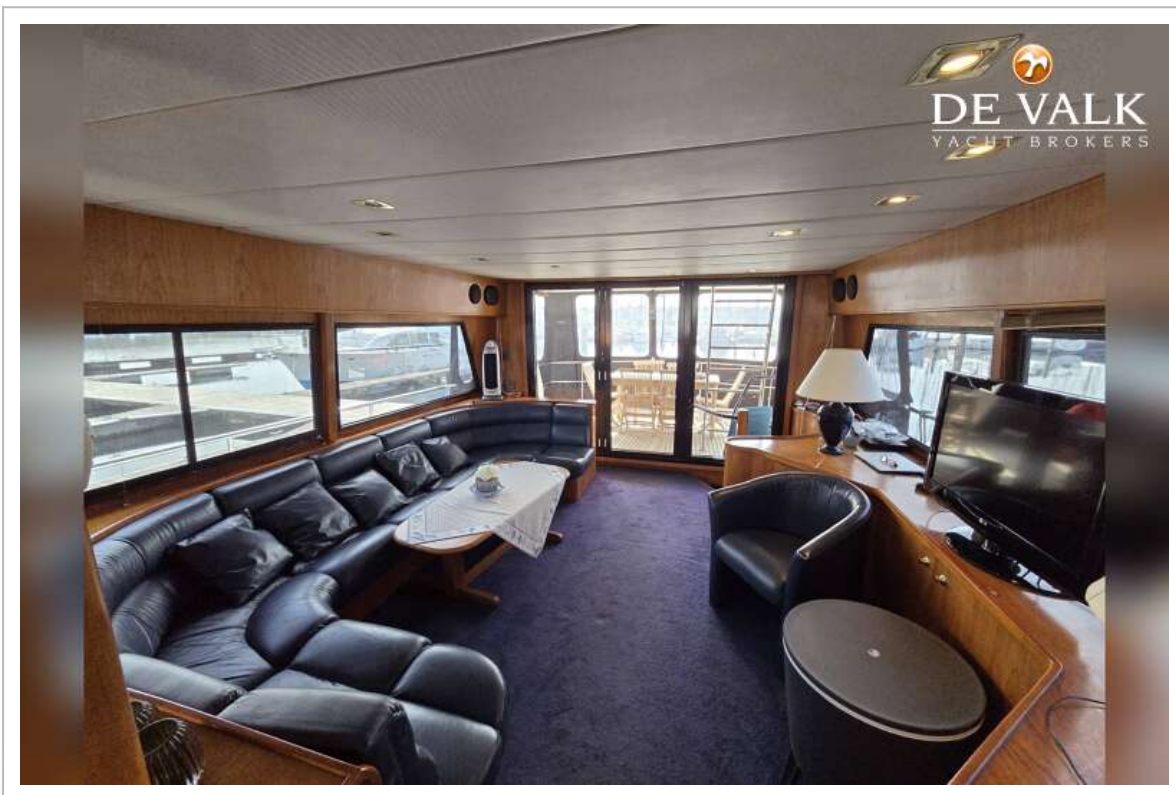
# NEPTUNUS 196 FLYBRIDGE



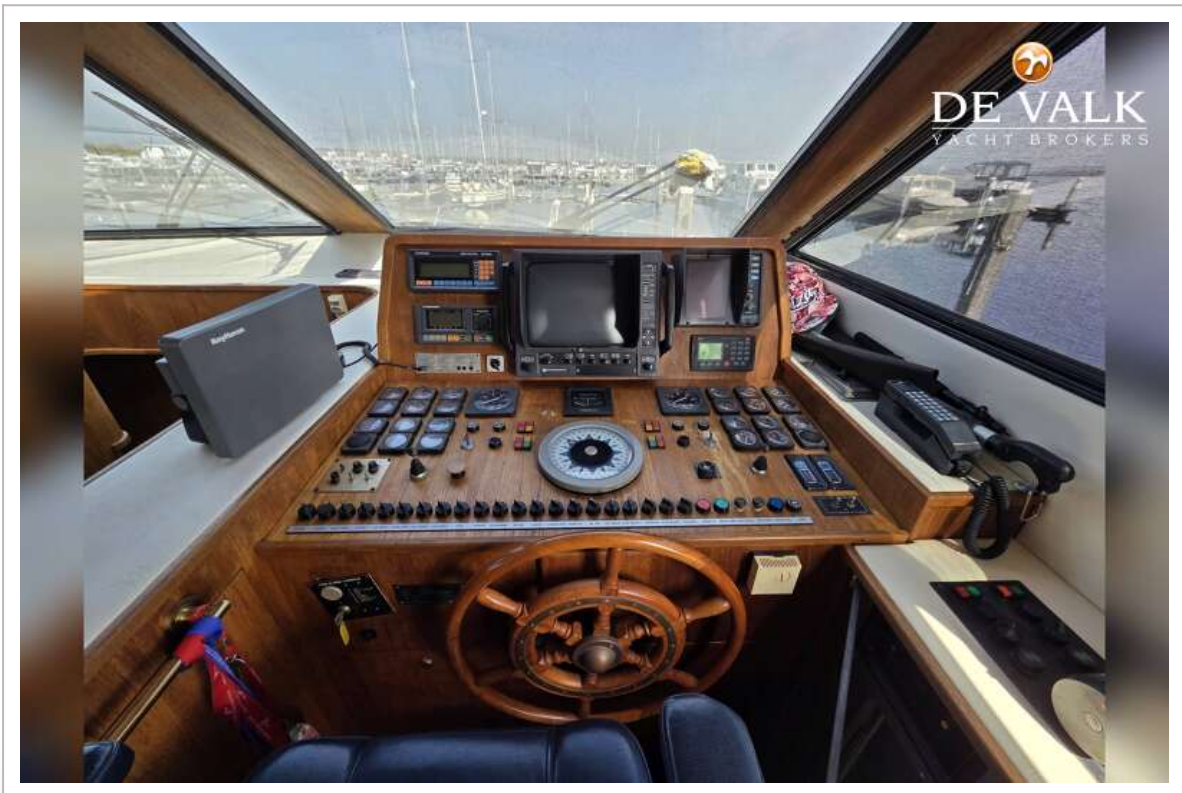
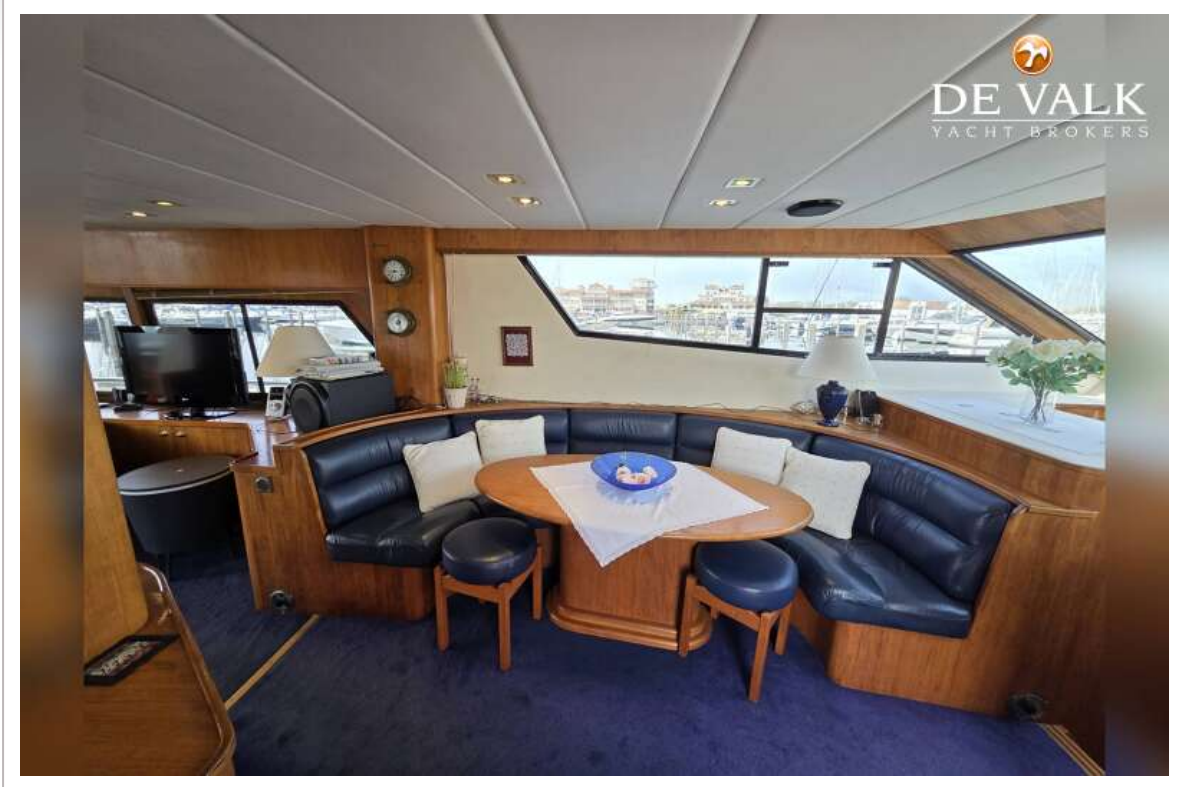
# NEPTUNUS 196 FLYBRIDGE



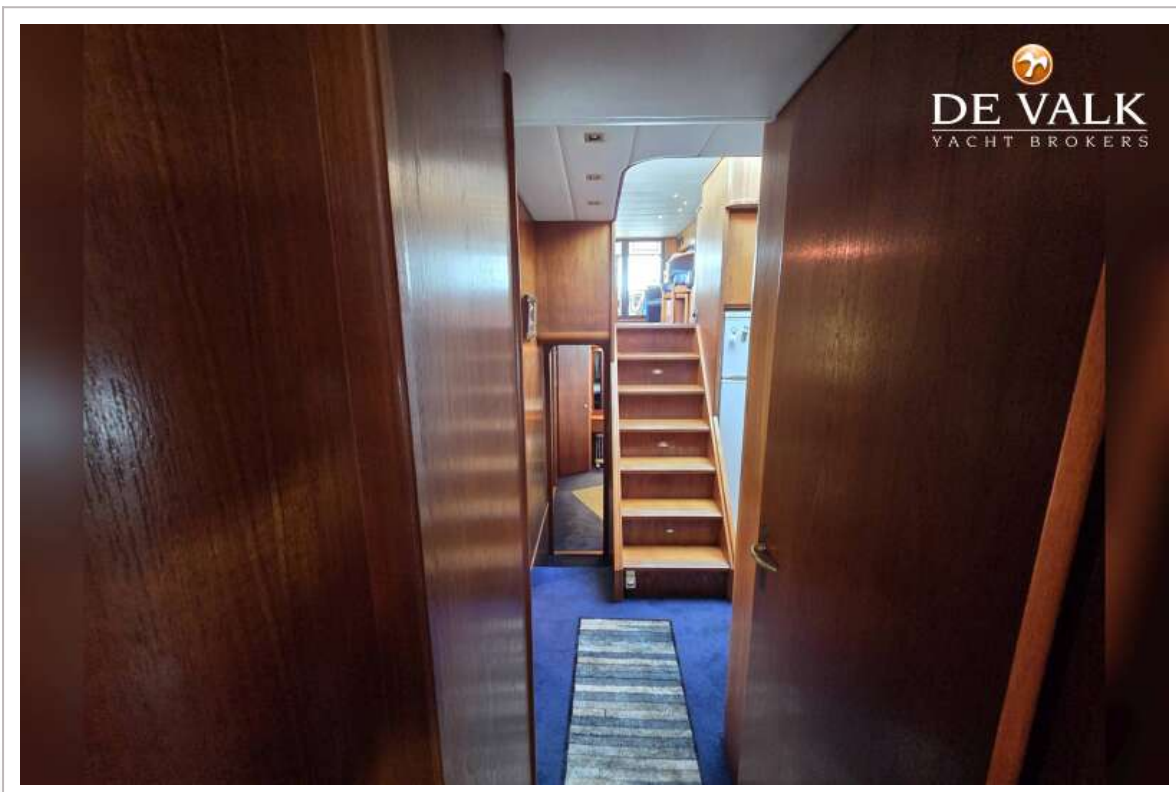
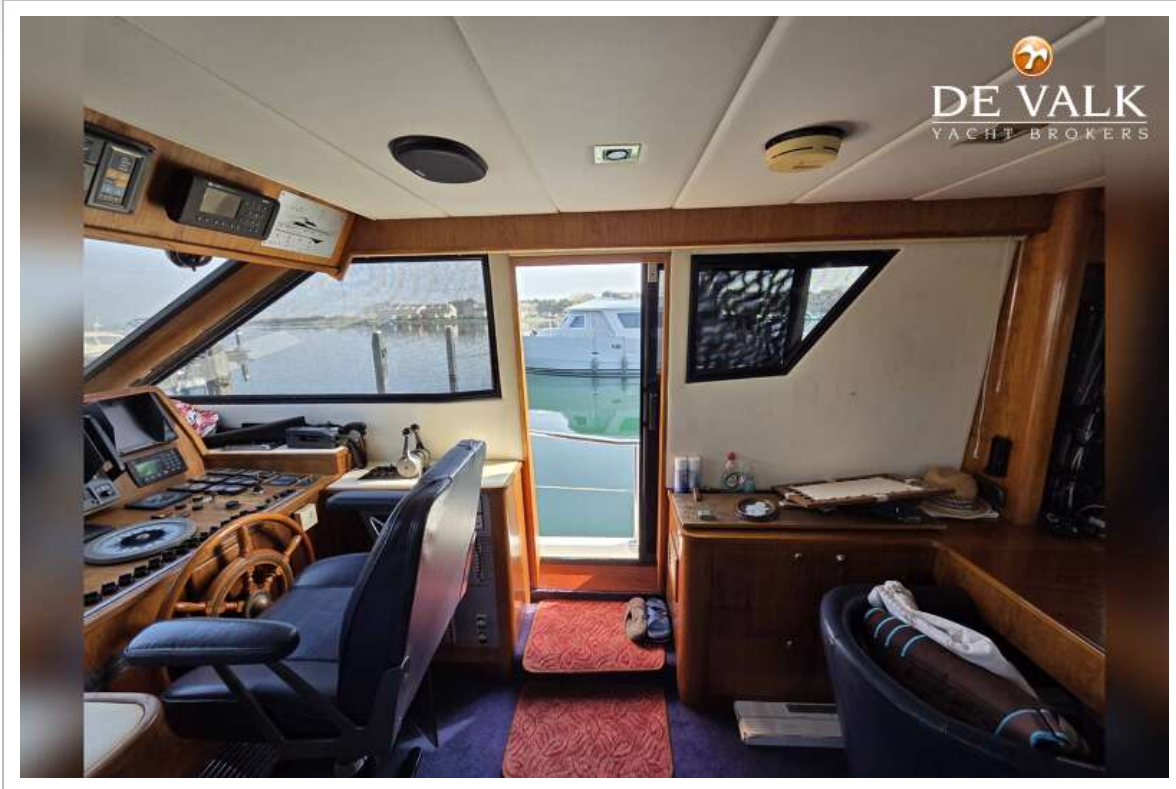
# NEPTUNUS 196 FLYBRIDGE



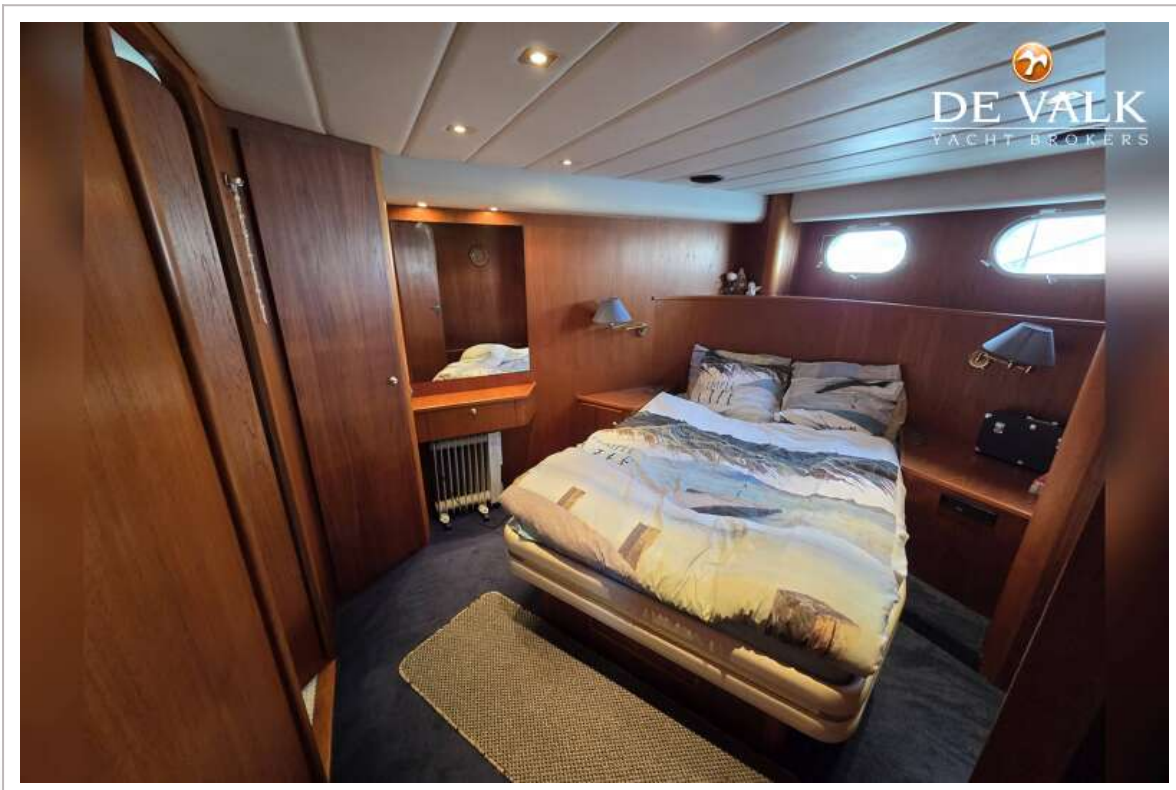
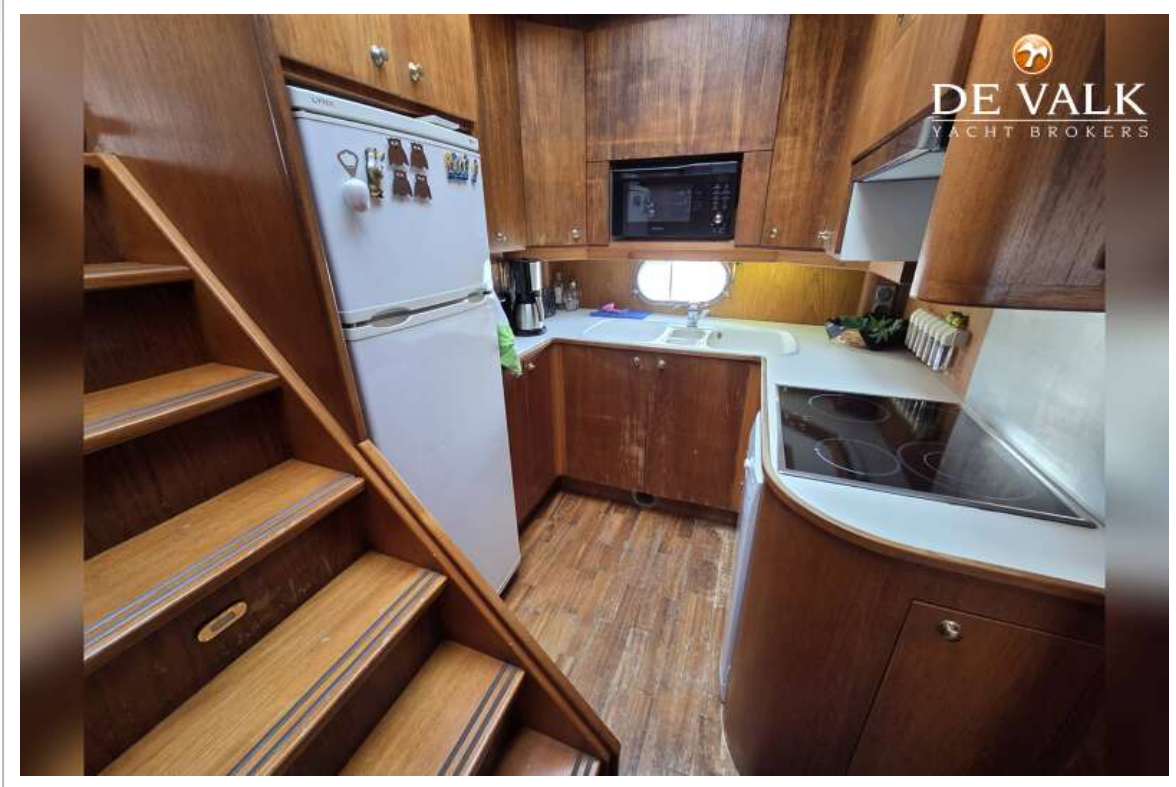
# NEPTUNUS 196 FLYBRIDGE



# NEPTUNUS 196 FLYBRIDGE



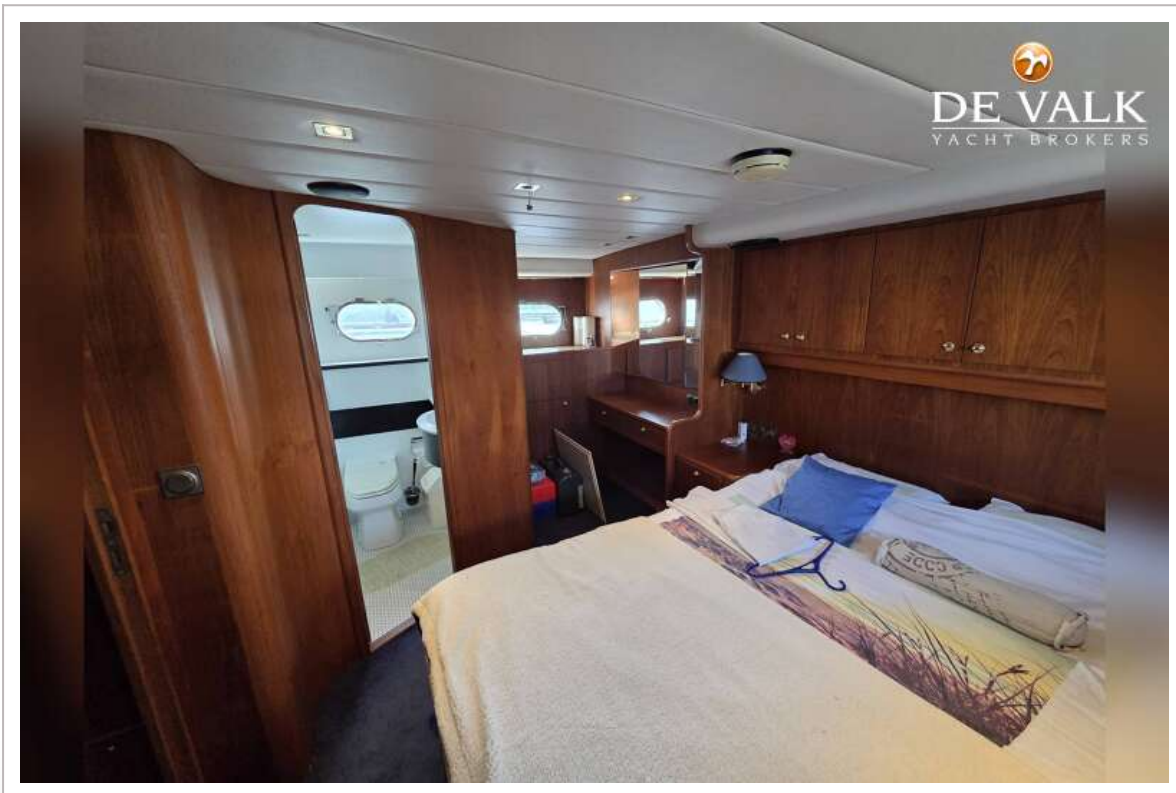
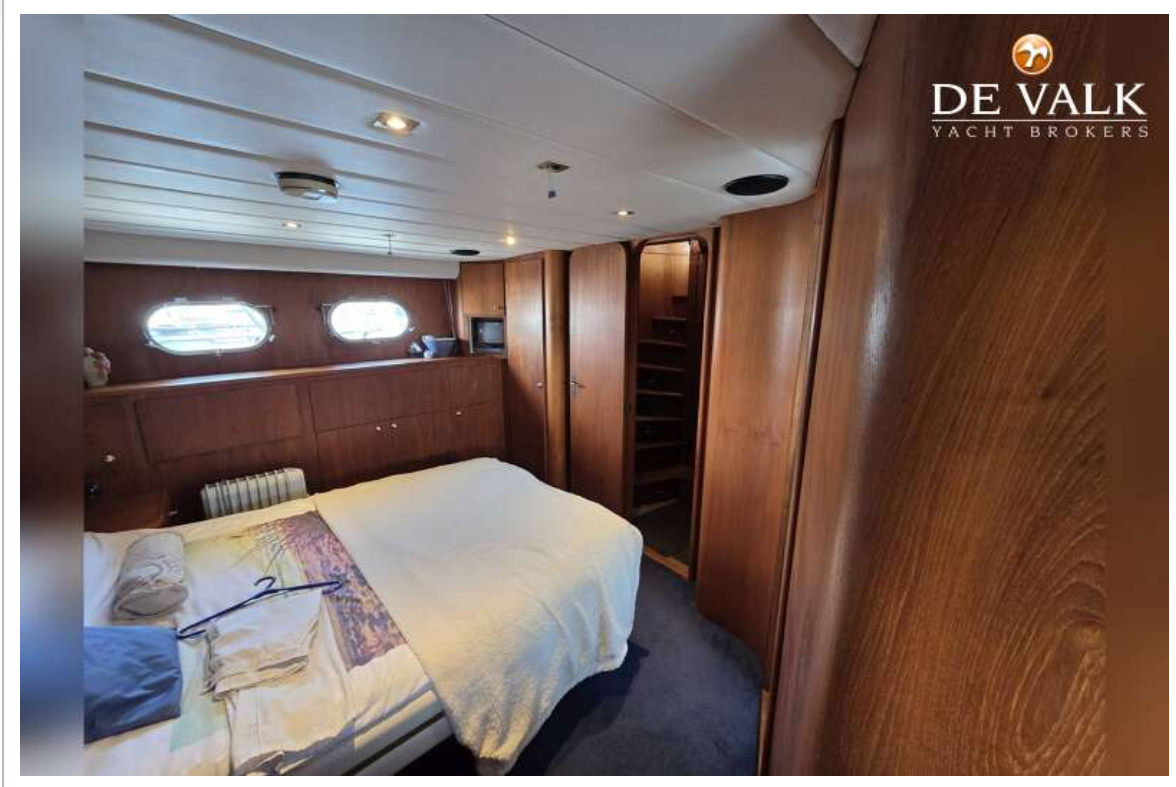
# NEPTUNUS 196 FLYBRIDGE



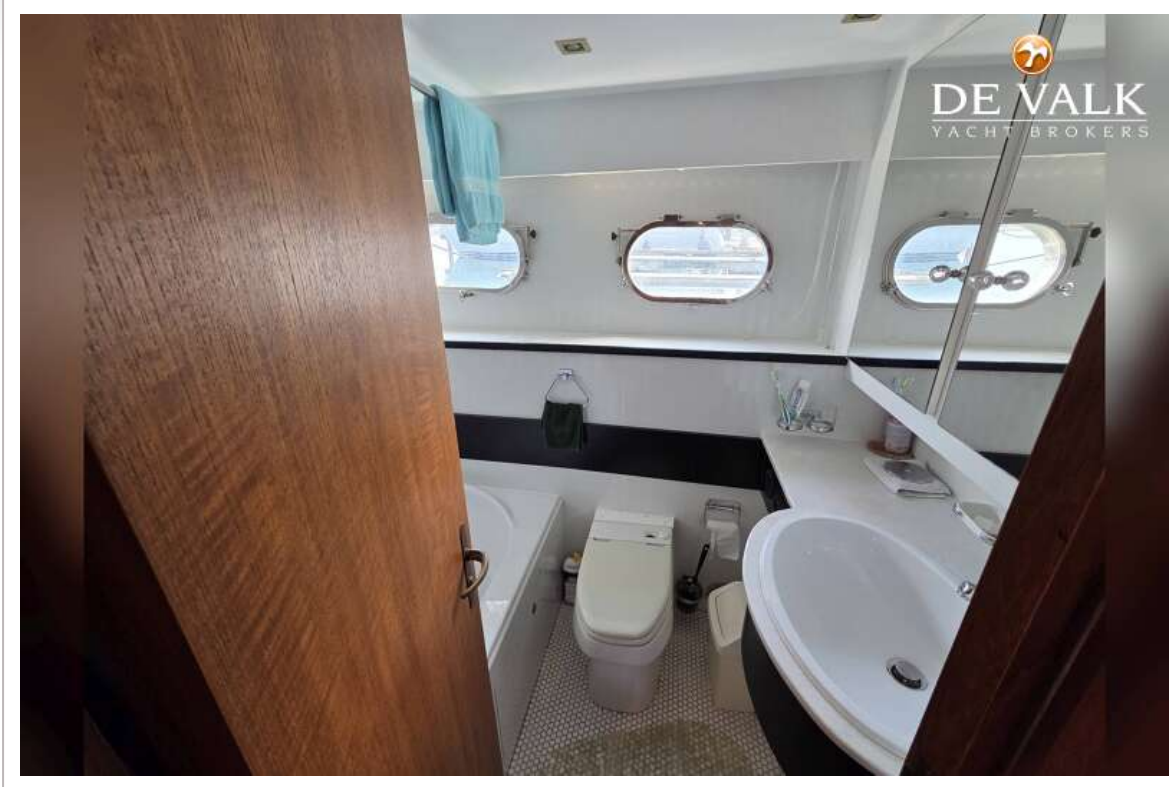
# NEPTUNUS 196 FLYBRIDGE



# NEPTUNUS 196 FLYBRIDGE



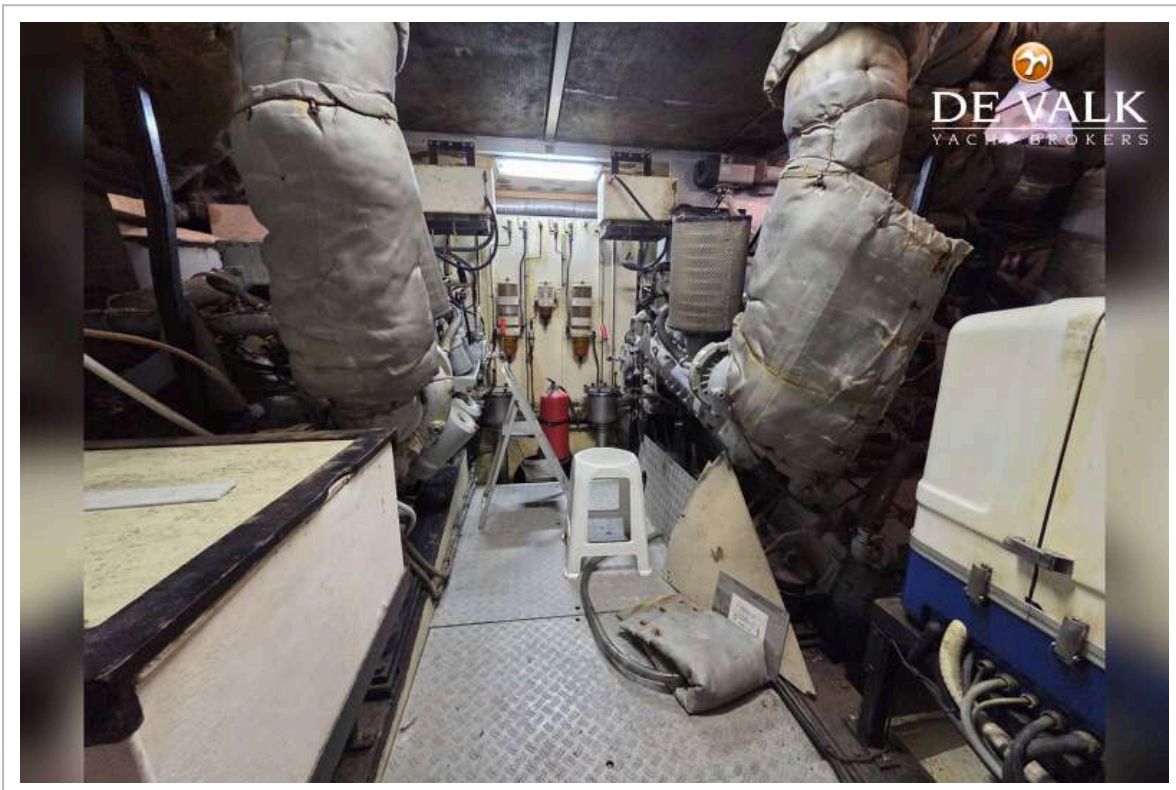
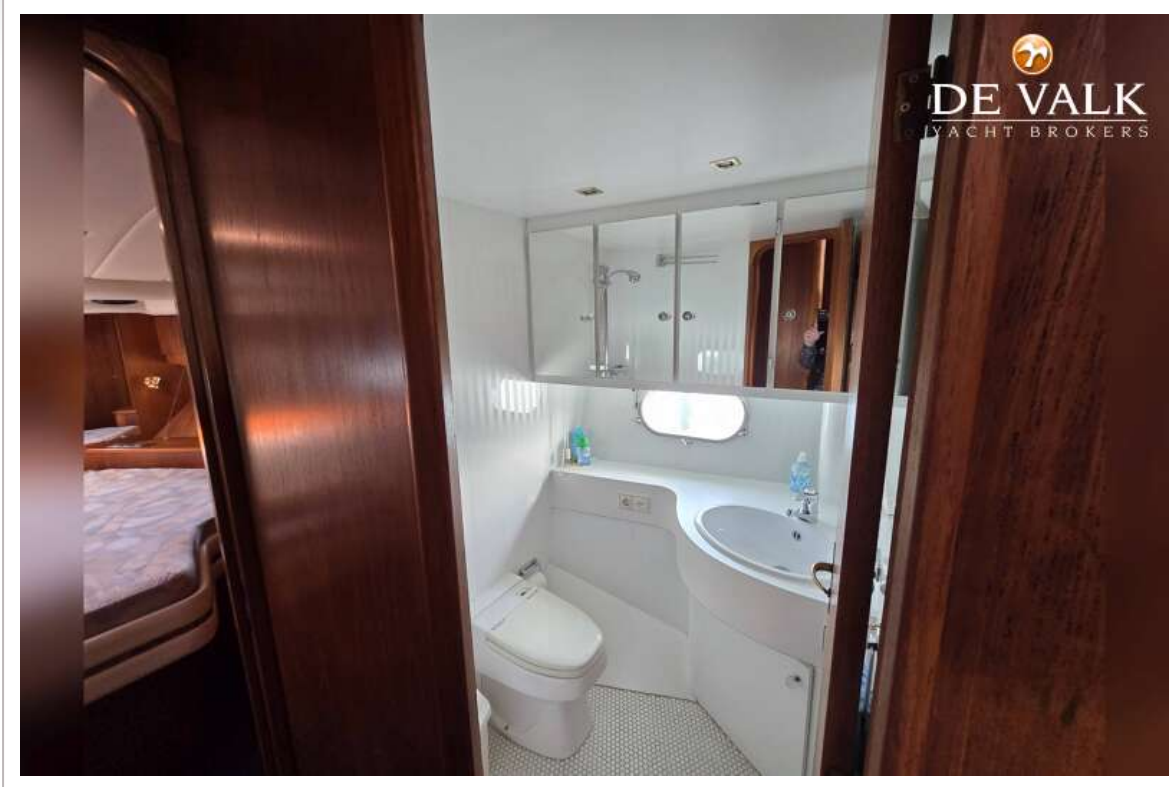
# NEPTUNUS 196 FLYBRIDGE



# NEPTUNUS 196 FLYBRIDGE



# NEPTUNUS 196 FLYBRIDGE



# NEPTUNUS 196 FLYBRIDGE



# NEPTUNUS 196 FLYBRIDGE

