



DE VALK
YACHT BROKERS



MALO 39 CLASSIC



DE VALK
YACHT BROKERS

MALO 39 CLASSIC

BROKER'S COMMENTS

In new condition Malo 39 for a used price, just arrived in Hindeloopen. This Malo 39 Classic which is known for its high-quality Swedish build quality and extremely comfortable sailing characteristics is now available and ready to go. With her electric winches, bow thruster and large cockpit, she can be sailed in comfort with 2 people but there is also enough room for a family of 6 with very much storage space in easily accessible places. She can now be admired and viewed 7 days a week at our sales marina in Hindeloopen.

Johan Nooitgedagt

SPECIFICATIONS

Dimensions	12.65 x 3.76 x 1.83 (m)	Builder	Malo
Built	2003	Cabins	3
Material	GRP	Berths	7
Engine(s)	1 x Yanmar 4JH4 M-E Turbo diesel	Hp/Kw	75.00 (hp), 55.13 (kw)
Asking price	sold (VAT)	Lying	at sales office

CONTACT

Sales office	De Valk Hindeloopen	Telephone	+31 514 52 40 00
Address	Oosterstrand 1 8713 JS Hindeloopen The Netherlands	E-mail	hindeloopen@devalk.nl

DISCLAIMER

These particulars are given in good faith as supplied but cannot be guaranteed.



MALO 39 CLASSIC

GENERAL

Model	MALO 39 CLASSIC
Type	sailing yacht
LOA (m)	12,65
LWL (m)	9,80
Beam (m)	3,76
Draft (m)	1,83
Air draft (m)	17,00
Headroom (m)	2,00
Year built	2003
Launched	2004
Builder	Malo
Country	Sweden
Designer	Leif Angermark
Displacement (t)	8,9
Ballast (tonnes)	lead in GRP 3.5
Gross tonnage	8.9
CE norm	A
Hull material	GRP
Hull colour	white
Hull shape	yes
Keel type	fin keel
Rubbing strake	stainless steel
Deck material	GRP
Deck finish	teak 12mm
Cockpit deck finish	teak 12mm
Antifouling (year)	Juli 2024
Dorades	yes
Window frame	aluminium
Window material	tempered glass
Deckhatch	yes



MALO 39 CLASSIC

Fuel tank (litre)	280L
Level indicator (fuel tank)	yes
Freshwater tank (litre)	455L (245L + 210L)
Level indicator (freshwater)	yes
Blackwater tank (litre)	50L
Wheel steering	JEFA with leather
Emergency tiller	yes

ACCOMMODATION

Cabins	3
Berths	7
Interior	mahogany
Floor	teak and holly
Saloon	yes
Headroom saloon (m)	2,00
Heating	diesel ducted hot air Eberspacher D5L-C
Chart table	yes
Aft Cabin	2
Galley	yes
Countertop	corian
Sink	stainless steel
Cooker	calor gas 2 pits
Oven	yes
Fridge	yes
Hot water system	220V + engine 90L
Water pressure system	electrical
Crockery	yes
Owners cabin	v-bed Front
Bed length (m)	2m
Wardrobe	yes
Bathroom	shared



MALO 39 CLASSIC

Toilet	shared
Toilet system	manual
Wash basin	in the bathroom
Shower	shared
Guest cabin 1	double bed
Bed length (m)	2.0m
Wardrobe	yes
Bathroom	shared
Toilet	shared
Toilet system	manual
Wash basin	in the bathroom
Shower	shared
Guest cabin 2	double bed
Bed length (m)	2.0m
Wardrobe	yes
Bathroom	shared
Toilet	shared
Toilet system	manual
Wash basin	in the bathroom
Shower	shared

MACHINERY

No of engines	1
Make	Yanmar
Type	4JH4 M-E Turbo
HP	75
kW	55.13
Fuel	diesel
Year installed	2016
Maximum speed (kn)	8
Cruising speed (kn)	7



MALO 39 CLASSIC

Consumption (l/hr)	3
Engine hours	648
Engine cooling system	freshwater heat exchanger
Drive	shaft
Engine controls	bowden cable
Gearbox	mechanical
Bowthruster	electric Duoprop 95 kgP with remote
Exhaust	watercooled
Propeller type	folding 2020 Flex-o-fold (reserve 3 blades fixed propeller)
Propeller blades	3x
Propeller shaft material	stainless steel
Shaft lubrication	water
Manual bilge pump	yes
Electric bilge pump	yes
Batteries	4x 2022
Start battery	1x 2022
Service battery	3x 2022
Battery monitor	Mastervolt charger control
Battery charger	Mastervolt 50A new 2022
Inverter	Mastervolt 230V
Shorepower	with cable
Extra info	Remote for bowthruster
Extra info	2 remotes for autopilot

NAVIGATION

Compass	Plastimo Olympic 135
Electric compass	yes
Depth sounder	Raymarine ST60 Depth
Depth sounder/log	yes
Log	Raymarine ST60 Speed
Windset	Raymarine ST60 Wind



MALO 39 CLASSIC

Repeater	Inside Raymarine ST 60 Multi
VHF	Inside Raymarine 215E DSC
Autopilot	Raymarine ST6001+ with 2 remotes
Rudder angle indicator	Raymarine ST6001+
GPS	Inside Garmin GPS 72H
Plotter/GPS	Raymarine Raychart SL631
Electronic chart(s)	C Map BE/NL 2015 & UK Central and channel 2016
Navigation lights	yes
Extra info	Combi antenne Panama VHF, GSM, TV, FM

EQUIPMENT

Fixed windscreen	yes
Sprayhood	yes
Cockpit cover	yes
Cockpit cushions	yes
Cockpit table	yes
Bathing platform	yes
Boarding ladder	stainless steel
Deck shower	yes
Anchor	Bruce 25 kg
Anchor chain	100m
Anchor 2	Bruce 15 kg
Anchor chain	40m
Sea railing	wire
Grab rail (superstructure)	teak
Railing side opening gates	yes
Pushpit	yes
Pulpit	Teak
Life raft	valise (or bag)
Radar reflector	yes
Fenders	yes



MALO 39 CLASSIC

Mooring lines	yes
Tools	yes
Radio-cd player	yes
Speakers in salon	yes
Speakers in cabin	yes
Clock - barometer	yes
Fire extinguisher	yes

RIGGING

Rigging	sloop
Standing rigging	wire
Brand mast	Seldén
Material mast	aluminium
Spreaders	2 pair
Mainsail	2018 Hyde Sails 36.5m2
Stoway mast	Selden
Genoa	2018 Hyde Sails 53m2
Genoa furler	Harken
Spinnaker	Elvstrom
Reefing System	main in-mast furling
Backstay adjuster	mechanical
Boomvang	gasspring
Primary sheet winch	2x ST 25 Andersen at Mast
Secondary sheet winch	2x ST 40 Andersen
Genoa sheetwinches	2x ST 52 Andersen (electric)
Multifunctional winches	halyard/sheet winches
Extra info	High quality mattresses 15cm



MALO 39 CLASSIC



MALO 39 CLASSIC



MALO 39 CLASSIC



MALO 39 CLASSIC



MALO 39 CLASSIC



MALO 39 CLASSIC



MALO 39 CLASSIC



MALO 39 CLASSIC



MALO 39 CLASSIC



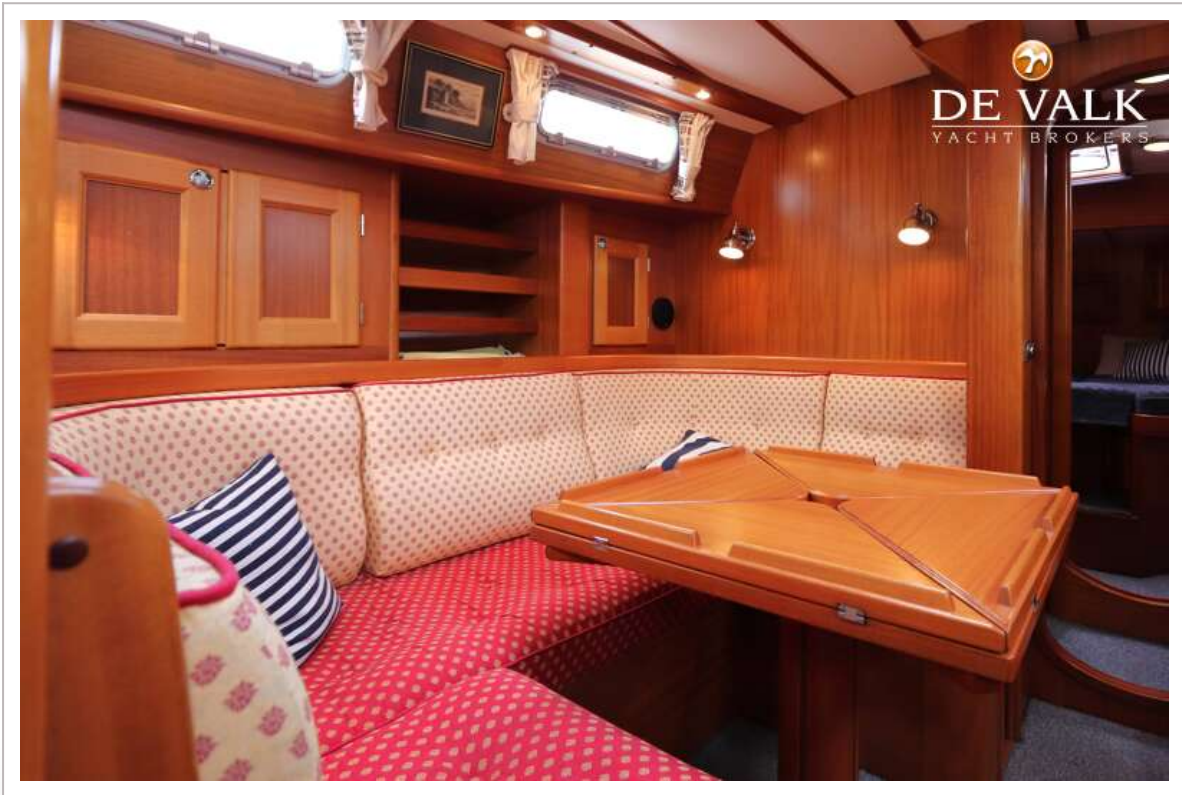
MALO 39 CLASSIC



MALO 39 CLASSIC



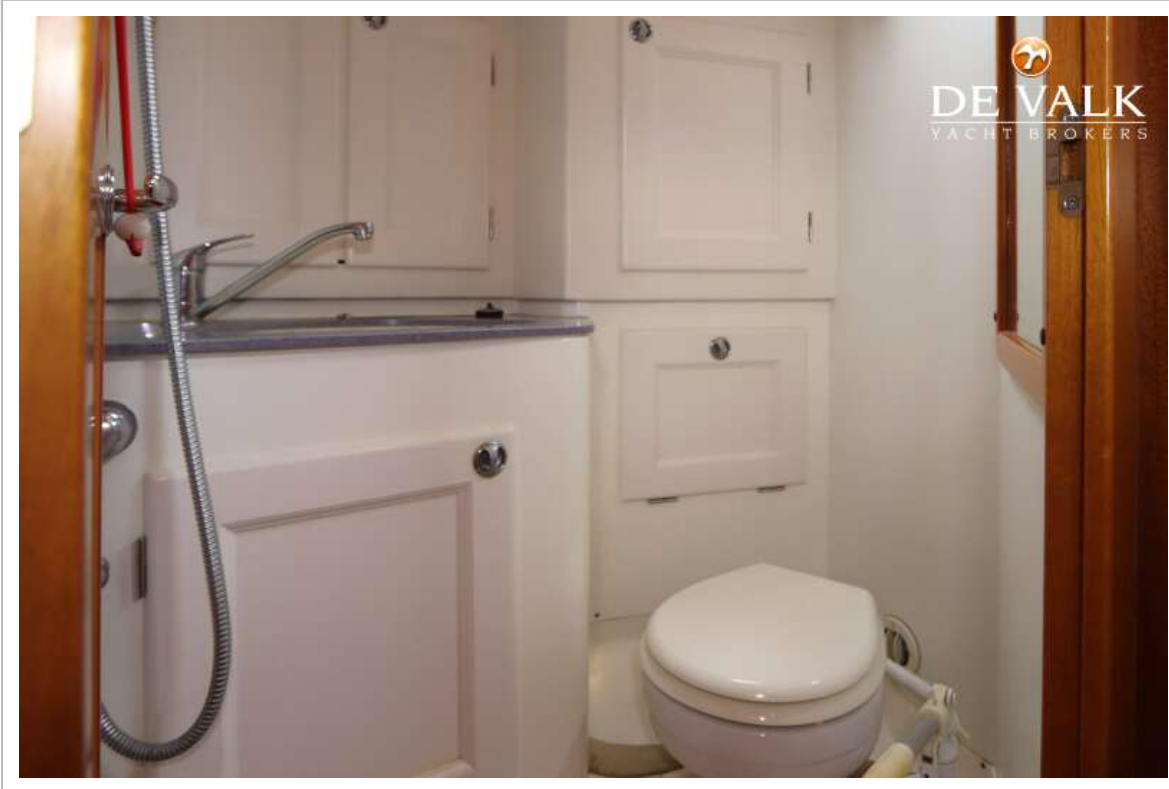
MALO 39 CLASSIC



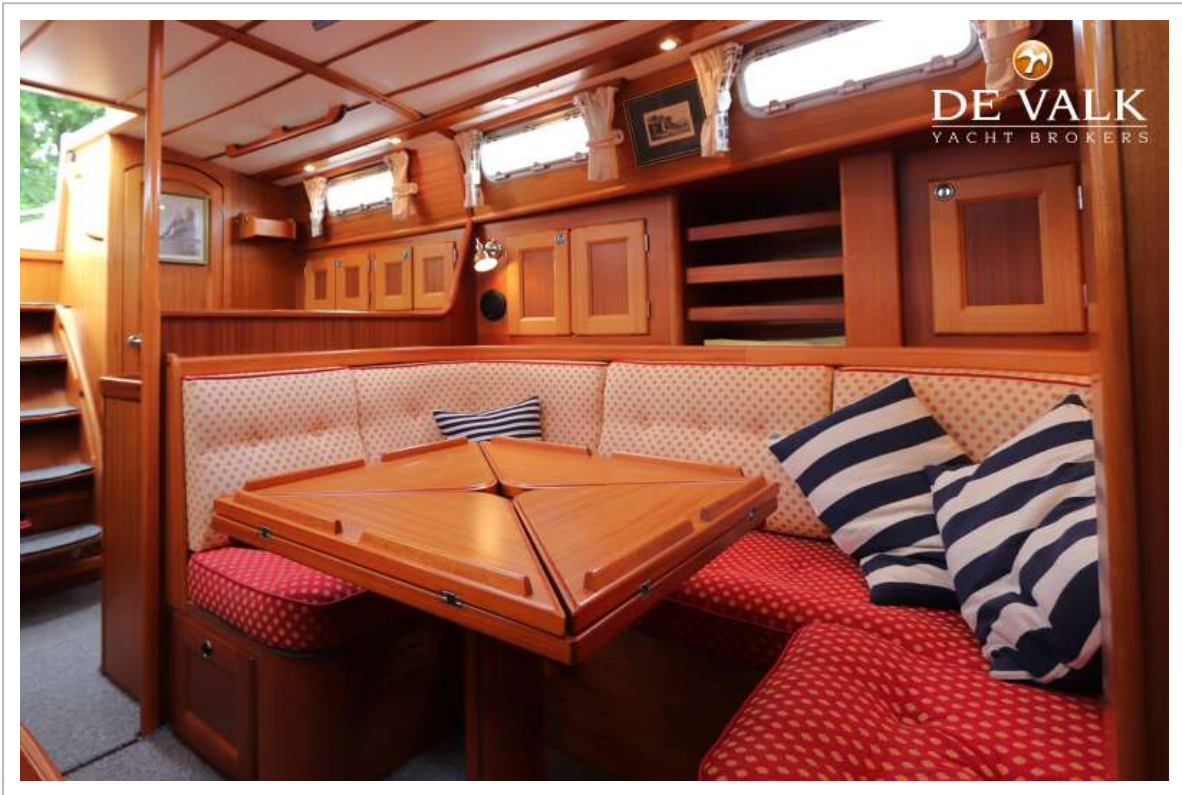
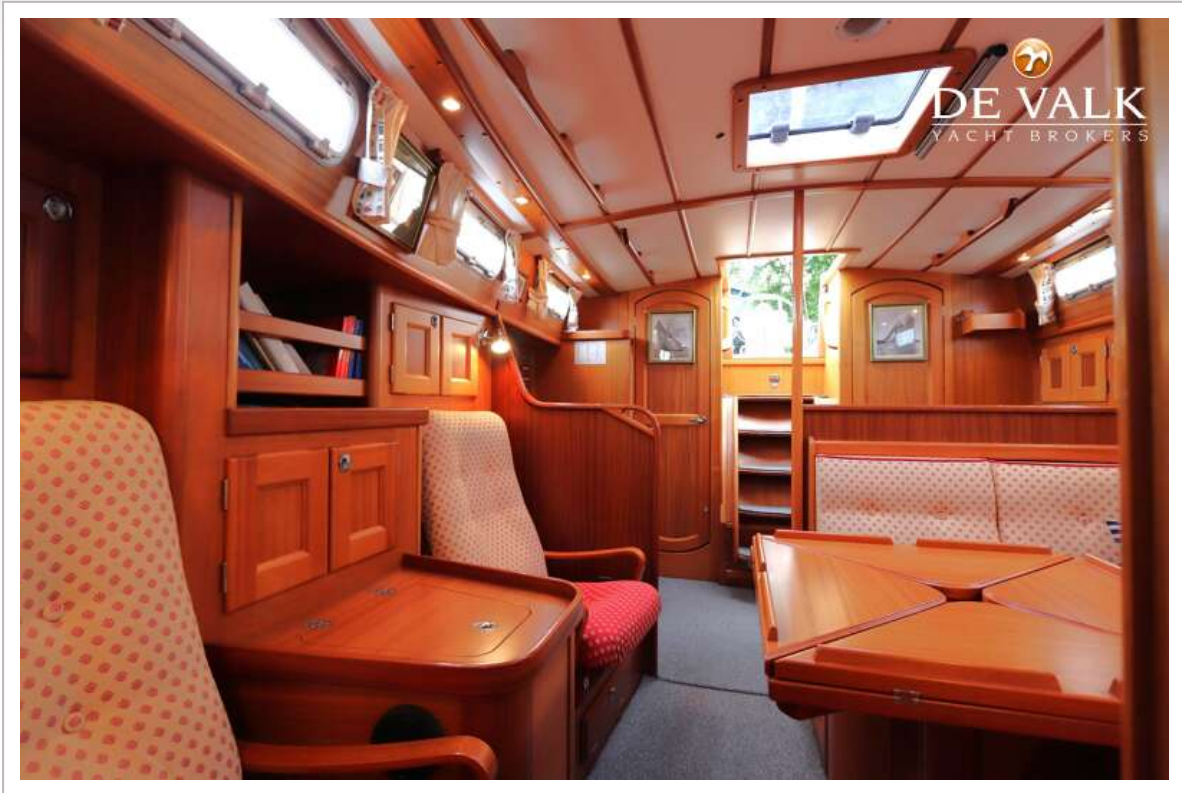
MALO 39 CLASSIC



MALO 39 CLASSIC



MALO 39 CLASSIC



MALO 39 CLASSIC



MALO 39 CLASSIC



MALO 39 CLASSIC



MALO 39 CLASSIC

