



DE VALK  
YACHT BROKERS



RUBIN 35 MS



DE VALK  
YACHT BROKERS

BROKERAGE | CHARTER | BERTHS | FINANCE | INSURANCE | YACHT MANAGEMENT

# RUBIN 35 MS

## BROKER'S COMMENTS

The Rubin 35 motorsailer is a well and sturdy, German built ketch. Inside steering from the pilothouse saloon will lengthen your sailing season or give shelter during bad weather passages. The outside helm position is the place to be at lovely days. The nice designed interior offers a "room with a view", well proportioned cabins - she sleeps up to 5 people - well proportioned and equipped galley and lots off stowage place. Well equipped, amongst others a bow-thruster, recent navigation electronics and a powerful, reliable Perkins engine.

*Harald Padberg*

## SPECIFICATIONS

<b>Dimensions</b>	10.50 x 3.30 x 1.35 (m)	<b>Builder</b>	Deerberg, Germany
<b>Built</b>	1980	<b>Cabins</b>	2
<b>Material</b>	GRP	<b>Berths</b>	5
<b>Engine(s)</b>	1 x Perkins 4,236 diesel	<b>Hp/Kw</b>	65.00 (hp), 47.78 (kw)
<b>Asking price</b>	sold (VAT )	<b>Lying</b>	elsewhere / Not at sales office

## CONTACT

<b>Sales office</b>	De Valk Monnickendam B.V.	<b>Telephone</b>	+31 (0)299 65 63 50
<b>Address</b>	Hoogedijk 6 1145 PM Katwoude NL	<b>E-mail</b>	monnickendam@devalk.nl

## DISCLAIMER

These particulars are given in good faith as supplied but cannot be guaranteed.



## GENERAL

Model	RUBIN 35 MS
Type	sailing yacht
LOA (m)	10,50
LWL (m)	9,15
Beam (m)	3,30
Draft (m)	1,35
Air draft (m)	12,40
Headroom (m)	1,90
Year built	1980
Builder	Deerberg, Germany
Country	Germany
Displacement (t)	8
Ballast (tonnes)	Ca. 3,5
CE norm	NA
Hull material	GRP
Hull colour	white
Hull shape	S-bilged
Keel type	long keel
Rubbing strake	Teak
Deck material	GRP
Deck finish	non-skid moulded in
Antifouling (year)	new 2022 - self polishing Copper Cruise International - 2 layers
Window frame	aluminium
Window material	glass
Deckhatch	2 X
Portholes	aluminium 8 X
Fuel tank (litre)	steel 500 L.
Freshwater tank (litre)	steel 500 L.
Blackwater tank (litre)	polyethylene 100 L.
Blackwater tank extraction	deck extraction + uw line



Outside helm position	hydraulic
Flybridge helm position	hydraulic
More info on hull	New anodes May 2022
More info on paintwork	Hull above the waterline painted in 2018
Extra info	Hull cleaned / polished 2022
Extra info	Additional information anti fouling: 4 layers on the waterline, forepeak and stern around the propeller shaft

## ACCOMMODATION

Cabins	2
Berths	5
Interior	teak



## Pilot house/deck saloon

The deckhouse has an entrance on both sides, which is easily accessible via the sea railing with lockable openings. In the deckhouse is a steering position with all necessary navigation equipment. At the rear of the deckhouse an L-shaped sofa with a removable dining table. The large windows in the deck house give you a good view outside and the two sliding doors and two openable windows provide good ventilation. In addition, the deckhouse offers lots of storage space and there is headroom everywhere. Via the steps you enter the forward cabin. Here there is a galley with stainless steel sink, hot and cold running water, a two-burner gas stove, a built-in oven and a top-loading refrigerator of approx. 70 liters. There is sufficient cupboard space for all kitchen utensils and there is a cupboard with a layout for the proper storage of crockery. Opposite the galley is a large round seat with a swiveling coffee table. This table can also be lowered, so that you can make a bed of 215x145 cm with the back cushions. There is storage space under the seat cushion. The cabin has four portholes that can be opened and the Trumatic heater has openings in all rooms. In the front cabin is a bed with the largest length 203 cm. and there are two closets and storage space above the bed. Here too there are two portholes and an escape hatch. On the other side of the deckhouse, a small staircase leads to the aft cabin. Here is a bed measuring 183 x 85 cm. Here is also the spacious wet room with toilet, sink with hot and cold water and the shower. In the bathroom is an porthole which can be openend and a permanent running fan on solar power.

## Headroom saloon (m)

approx. 1,90

## Heating

calorgas ducted hot air Trumatic

## Aft Cabin

yes

## Dinette to convert into berth

2,15 X 1,45 M

## Sliding door to cockpit

2 X

## Galley

yes

## Countertop

tiles

## Sink

stainless steel

## Cooker

2017 - Dometic P18062M

## Oven

2017 - Dometic OG2000



# RUBIN 35 MS

Gas alarm	TriGas detector at the galley, smoke detectors in front and aft cabin
Fridge	2011 - Isotherm Compact Classic 50W - ca. 70 Ltr.
Hot water system	220V + engine Boiler
Water pressure system	electrical
Owners cabin	double bed
Bed length (m)	1,83
Wardrobe	shelves
Bathroom	en suite
Toilet	en suite
Toilet system	vacuum
Wash basin	in the bathroom
Shower	en suite
Guest cabin 1	v-bed
Bed length (m)	2,03
Wardrobe	hanging and shelves
Extra info	Ventilation mat under mattresses in front cabin - new 2020 Front cabin walls newly painted in 2021 Heating system has air vents in each cabin
Extra info	6 powerplugs 220V - new in 2021
Extra info	In 2021 new curtains - entire boat
Washing machine	new in 2021
Extra info	outside gas locker for 2 large bottles. Both bottles have separate electronic valves

## MACHINERY

No of engines	1
Make	Perkins
Type	4,236
HP	65
kW	47,78
Fuel	diesel



# RUBIN 35 MS

Year installed	1980
Engine cooling system	freshwater heat exchanger
Drive	shaft
Engine controls	bowden cable
Propeller type	fixed
Propeller blades	3
Propeller shaft material	stainless steel
Shaft lubrication	water
Manual bilge pump	yes
Electric bilge pump	automatic
Battery monitor	BEP-DC DCSM
Battery charger	2017 - Whisper Power WP-BC Supreme 12V/40A
Inverter	2000W - new 2020
Solar panel	6 x Sunware
Shorepower	with cable
Insulation transformer	Argo Fet
Extra info	Engine maintenance 2022 ( new filters - oil - etc. ) Engine supports new in 2021 + engine alignment Prop-shaft bearing renewed in 2022 Flexible coupling overhauled in 2022 Prop-shaft alignment in 2022 Stainless Steel rudder - alignment in 2022
Extra info	Heating system 300W in engine room - new 2021

## NAVIGATION

Compass	In- and outside
Electric compass	Evolution EV-1 connected with NMEA2000 network
Depth sounder	Airmar - integrated in NMEA200 network
Log	VDO Logic - integrated in NMEA200 network
Windset	Triton wind pack - integrated in NMEA2000 network
VHF	Garmin VHF200i - with NMEA2000 interface
Autopilot	Evolution EV-1 with ACU200 and Raymarine P70 in- and outside control
GPS	Garmin GPS map 922 with NMEA2000 interface



<b>Navtex</b>	Nasa Easy Navtex
<b>AIS receiver</b>	Garmin AIS 600 with NMEA2000 interface
<b>AIS transponder</b>	Garmin AIS 600 with NMEA2000 interface
<b>Navigation lights</b>	Anchor light in top of foremast - new 2022. Deck lighting in front mast - new 2022. All navigation lights equipped with (approved) LED lamps.
<b>Extra info</b>	Depth / speed / wind info can be read on the Garmin GMI-20 multifunction display in the deckhouse and on a B&G Triton-2 multifunction display at the outside helm position.
<b>Extra info</b>	All navigation equipment is connected via MEA2000 cabling / protocol. In addition, it is possible to connect to a map / navigation program on a laptop / PC via USB via a MEA2000 / NMEA183 interface.

## EQUIPMENT

<b>Boarding ladder</b>	aluminum
<b>Anchor</b>	Danforth
<b>Anchor chain</b>	35 meters
<b>Windlass</b>	electrical
<b>Sea railing</b>	teak
<b>Railing side opening gates</b>	2 X
<b>Pushpit</b>	yes
<b>Pulpit</b>	yes
<b>Lifebuoy</b>	yes
<b>Horn</b>	
<b>Radar reflector</b>	in Mizzen mast
<b>Fenders</b>	yes
<b>Mooring lines</b>	yes
<b>TV</b>	1 X in front cabin and 1 x in salon
<b>Radio</b>	Marquant MCR-720
<b>Speakers in salon</b>	2 X
<b>Clock - barometer</b>	yes





## Extra info

Bow thruster can be operated from the deckhouse or via Lofrans remote control

## RIGGING

### Rigging

ketch

### Standing rigging

wire

### Material mast

aluminium

### Spreaders

1 set at each mast

### Mainsail

2010 - ca. 21m<sup>2</sup> - brown - Dacron

### Mizzen

2010 - ca. 10.2m<sup>2</sup> - Brown - Dacron

### Mizzen sailcover

yes

### Genoa

2012 - ca. 21m<sup>2</sup> - Brown - Dacron

### Genoa furler

Harken

### Genoa cover

yes

### Reefing System

slabreefing

### Boomvang

tackle

### Primary sheet winch

Meisner 16

### Genoa sheetwinches

2 X Andersen 40ST FST 2-speed selftailing

### Gennaker pole

aluminium

### Extra info

All sails are in good condition. Sail handling improved in 2021. Original set of sails is included as a spare set.



# RUBIN 35 MS



# RUBIN 35 MS





# RUBIN 35 MS



# RUBIN 35 MS





# RUBIN 35 MS



# RUBIN 35 MS



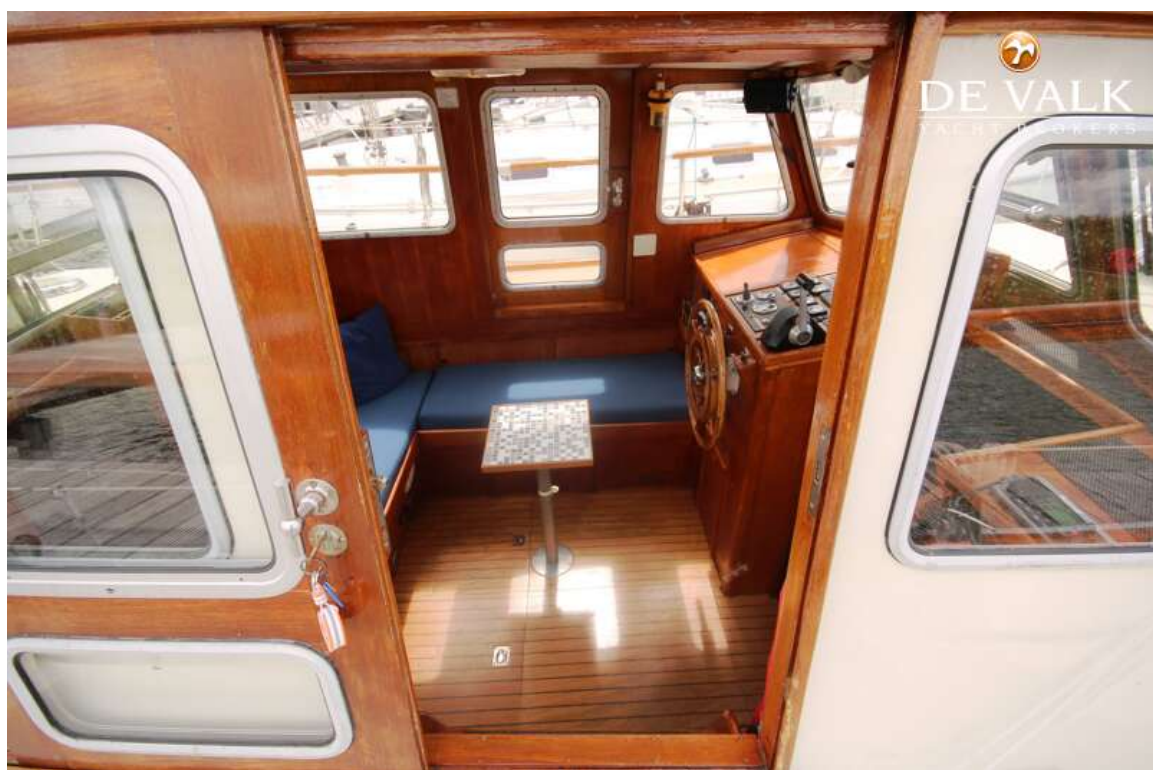


# RUBIN 35 MS

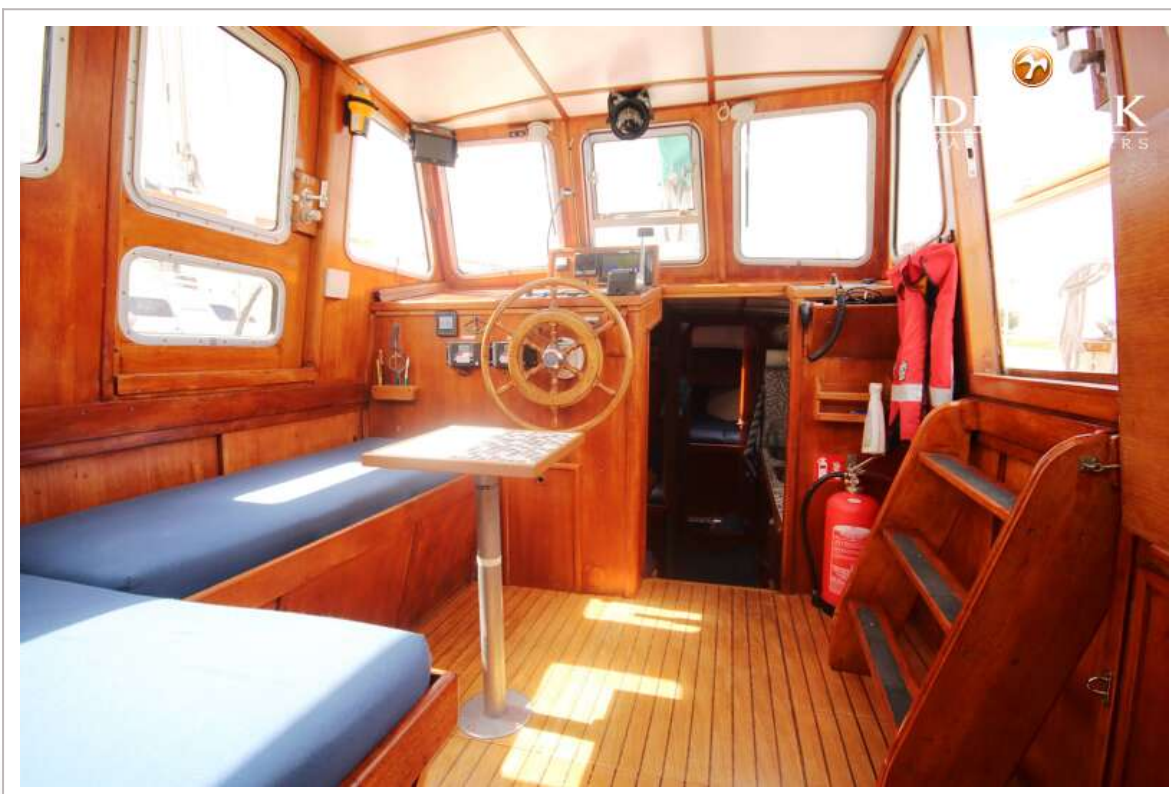




# RUBIN 35 MS



# RUBIN 35 MS





# RUBIN 35 MS

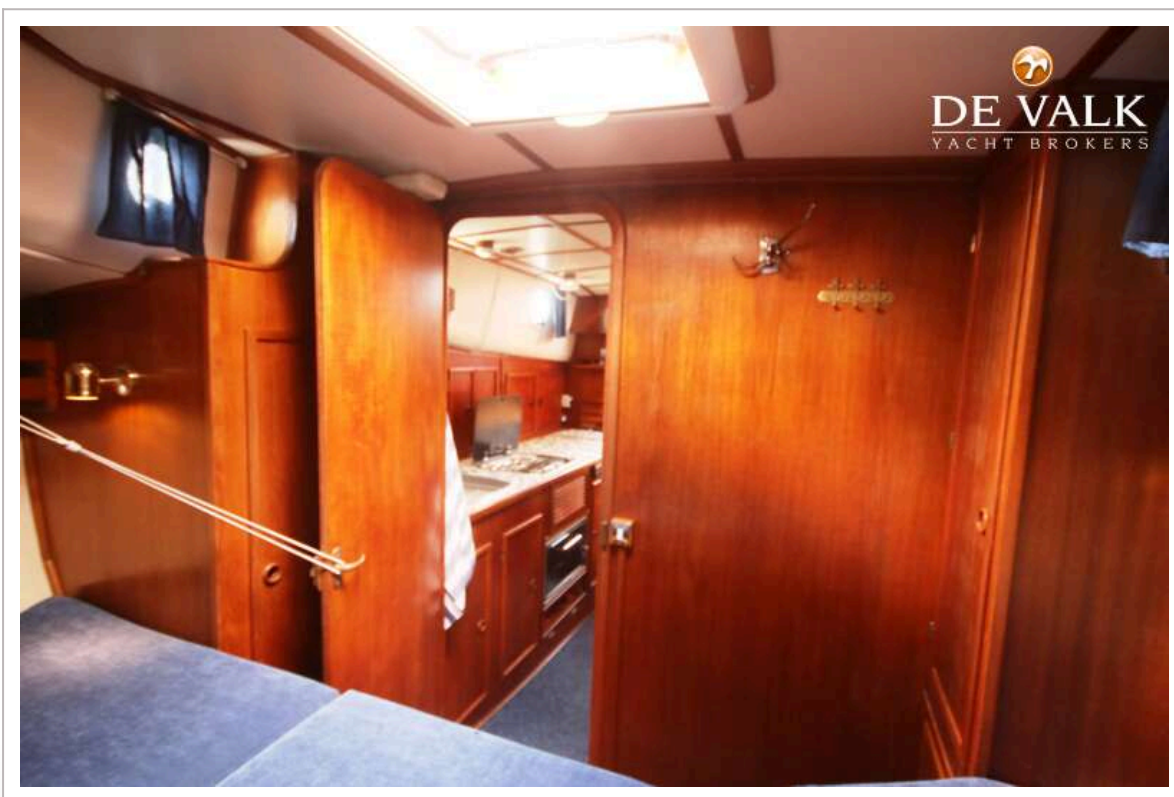
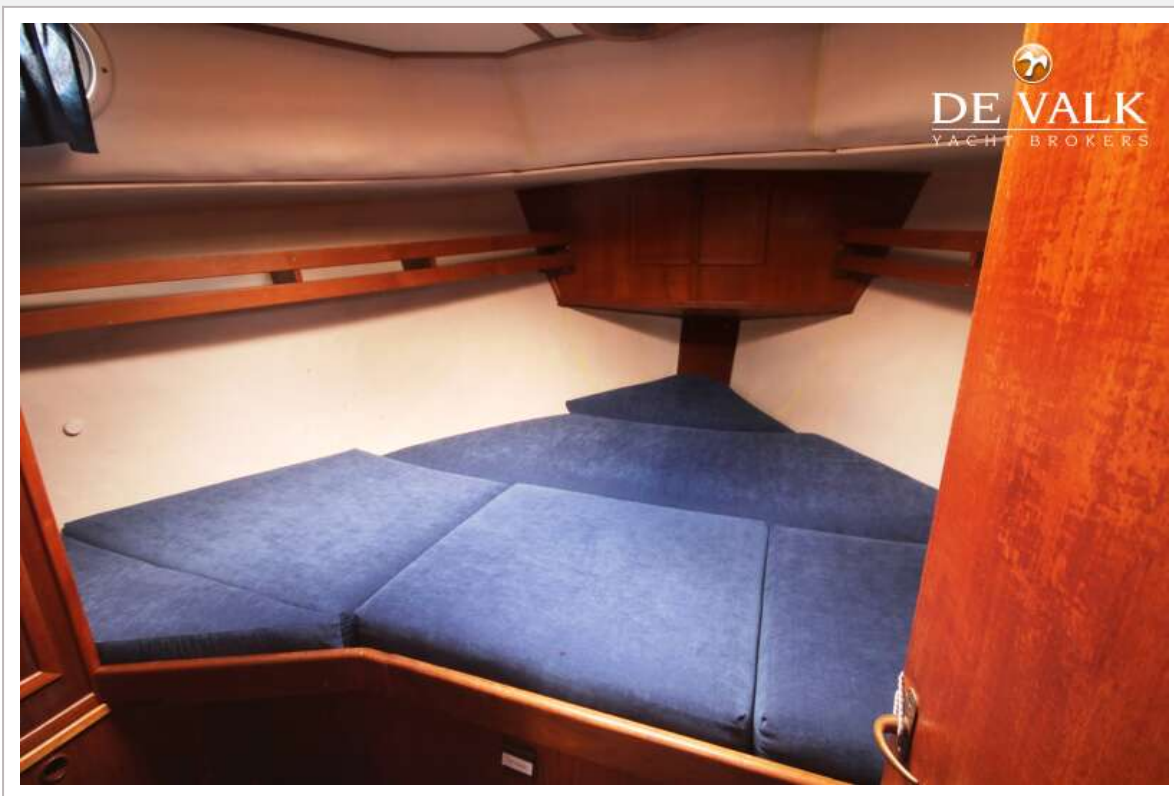


# RUBIN 35 MS





# RUBIN 35 MS



# RUBIN 35 MS





## RUBIN 35 MS

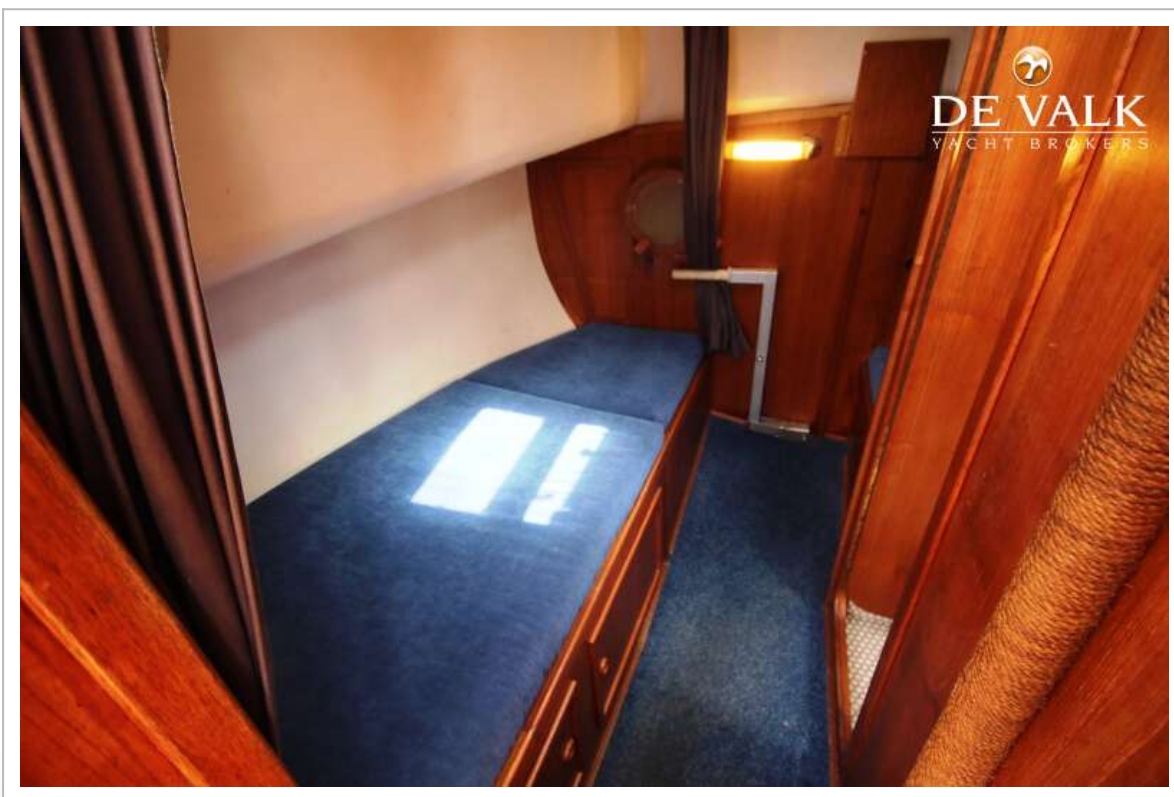


## RUBIN 35 MS

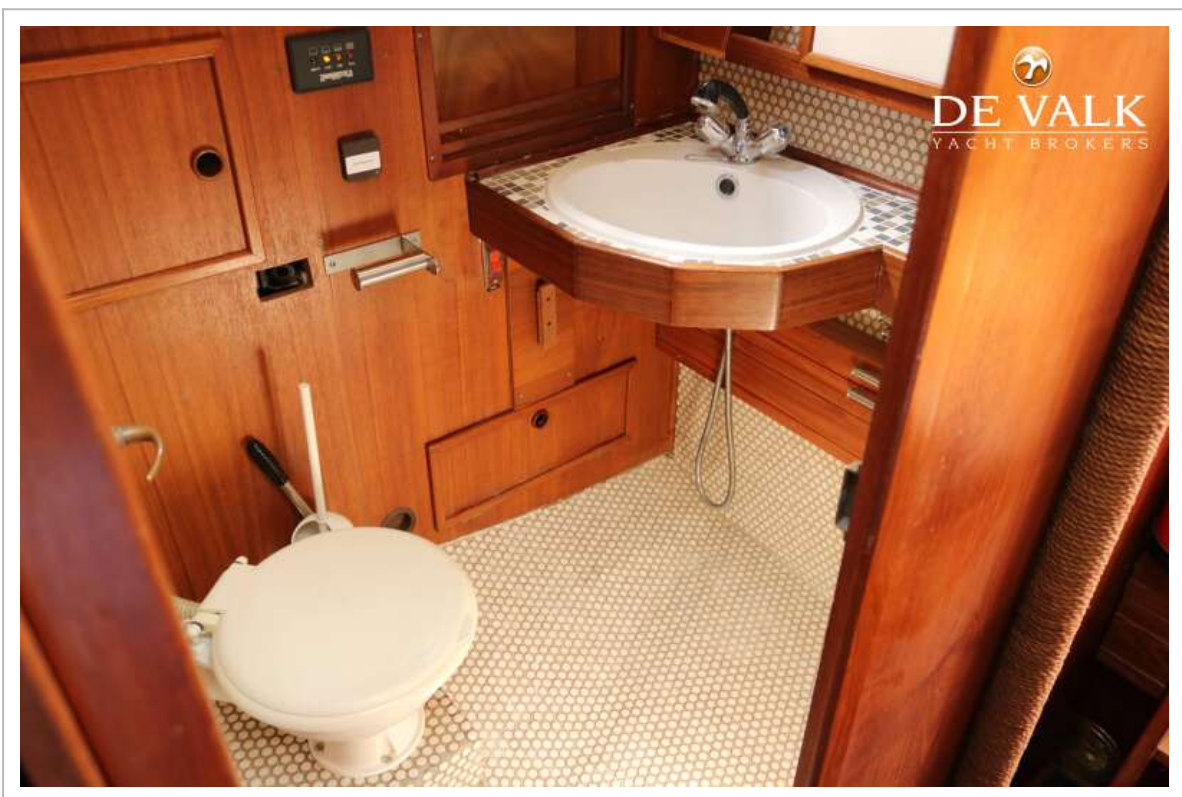




# RUBIN 35 MS

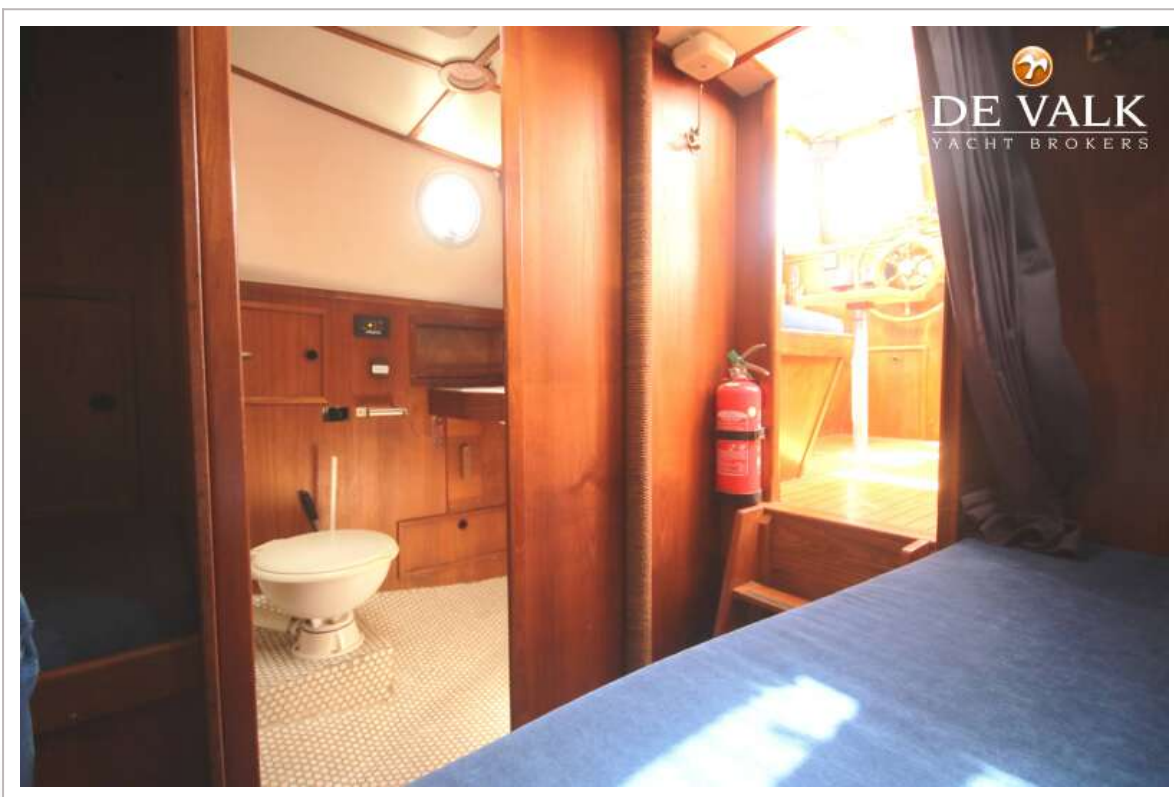


# RUBIN 35 MS

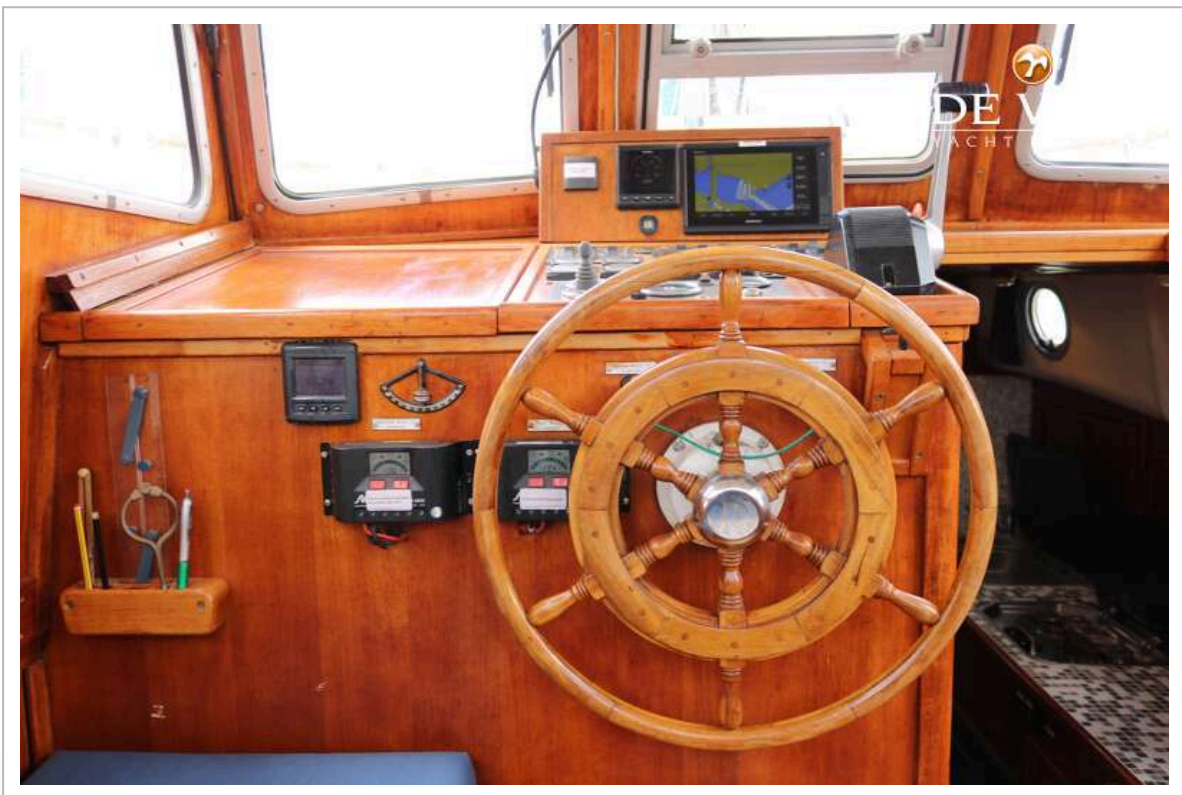
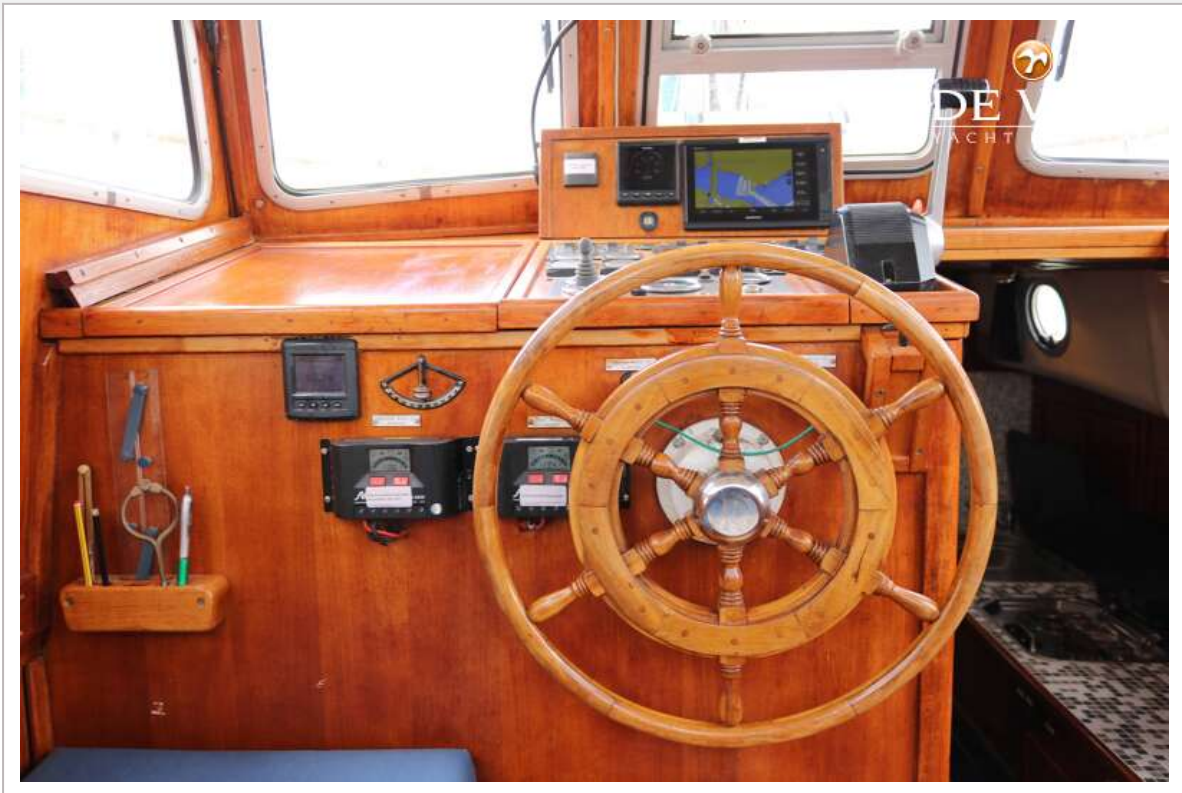




# RUBIN 35 MS



# RUBIN 35 MS





# RUBIN 35 MS



# RUBIN 35 MS

