



DE VALK  
YACHT BROKERS



## TALING MS 33



DE VALK  
YACHT BROKERS

# TALING MS 33

## BROKER'S COMMENTS

This Taling MS 33 is a Dutch sailing yacht with traditional lines and comfortable wheelhouse. Above all, it is a seaworthy yacht, well maintained by the current owner, making her a beauty on the water. She has a new engine, bow thruster and new batteries. With her shallow draught she can navigate both inland and outland waterways. The Taling MS 33 can be viewed 7 days a week at our location in Hindeloopen and is ready for departure with the new owner!

*Henri van Eelen*

## SPECIFICATIONS

<b>Dimensions</b>	10.75 x 3.15 x 1.50 (m)	<b>Builder</b>	Betuwe/ Alpha Boats
<b>Built</b>	1995	<b>Cabins</b>	2
<b>Material</b>	GRP	<b>Berths</b>	5
<b>Engine(s)</b>	1 x Nanni	<b>Hp/Kw</b>	38.00 (hp), 27.56 (kw)
<b>Asking price</b>	sold (VAT )	<b>Lying</b>	at sales office

## CONTACT

<b>Sales office</b>	De Valk Hindeloopen B.V.	<b>Telephone</b>	+31 514 52 40 00
<b>Address</b>	Oosterstrand 1 8713 JS Hindeloopen NL	<b>E-mail</b>	hindeloopen@devalk.nl

## DISCLAIMER

These particulars are given in good faith as supplied but cannot be guaranteed.



## GENERAL

Model	TALING MS 33
Type	sailing yacht
LOA (m)	10,75
Beam (m)	3,15
Draft (m)	1,50
Year built	1995
Builder	Betuwe/ Alpha Boats
Country	The Netherlands
Designer	Mr. C. Taal
Displacement (t)	7,5
Hull material	GRP
Hull colour	blue 2004
Hull shape	S-bilged
Deck finish	teak
Deckhatch	6
Fuel tank (litre)	stainless steel 150L
Freshwater tank (litre)	stainless steel 350L
Wheel steering	hydraulic Inside
Outside helm position	

## ACCOMMODATION

Cabins	2
Berths	5
Interior	teak
Pilot house	yes
Deck saloon	yes
Pilot house/deck saloon	1,95
Headroom saloon (m)	1,85
Heating	Alaska by Dickinson
Heating 2	Ventilator



Galley	yes
Countertop	plastic
Sink	stainless steel
Cooker	Two pits
Fridge	Isotherm 2021
Hot water system	Isotherm boiler 30L
Owners cabin	v-bed
Bed length (m)	yes
Wardrobe	drawers
Bathroom	shared
Toilet	RM69
Toilet system	manual
Wash basin	at the toilet

## MACHINERY

No of engines	1
Make	Nanni
HP	38
kW	27.56
Year installed	2016
Engine hours	275
Bowthruster	SP 75 T Side Power 2006
Batteries	2020
Extra info	Engine maintenance 2021

## NAVIGATION

Compass	yes
Depth sounder/log	Raymarine I70 2019
VHF	Shipmate RS 8300
Autopilot	B&G Hydra Pilot
Radar	Dome 45cm op paal



GPS	Furuno 2007
Radar/plotter	C80 Raymarine 2007
Electronis chart(s)	yes

## EQUIPMENT

Cockpit cover	2006
Sun awning	yes
Winter cover	yes
Cockpit table	yes
Boarding ladder	stainless steel
Bow ladder	yes
Gangway	yes
Anchor	Fortress
Anchor chain	50m/ 10mm
Davits	1x
Sea railing	stainless steel
Wiper	yes
Radio	JVC
Clock - barometer	yes

## RIGGING

Rigging	cutter
Mainsail	22m2
Cutterstay	16m2
Genoa	40.8m2
Genoa furler	Selden
Cutter furler	Selden
Gennaker	70m2 Miedema Sails Heeg met slurf 2010



# TALING MS 33

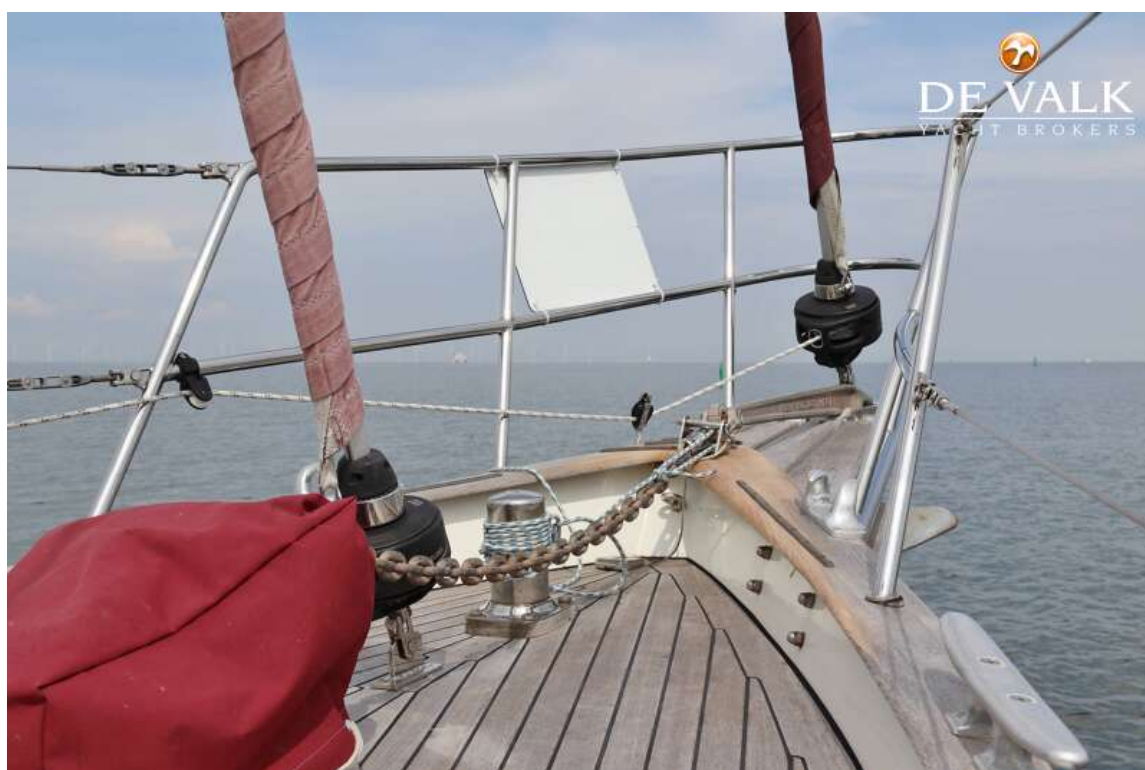




# TALING MS 33



# TALING MS 33





# TALING MS 33



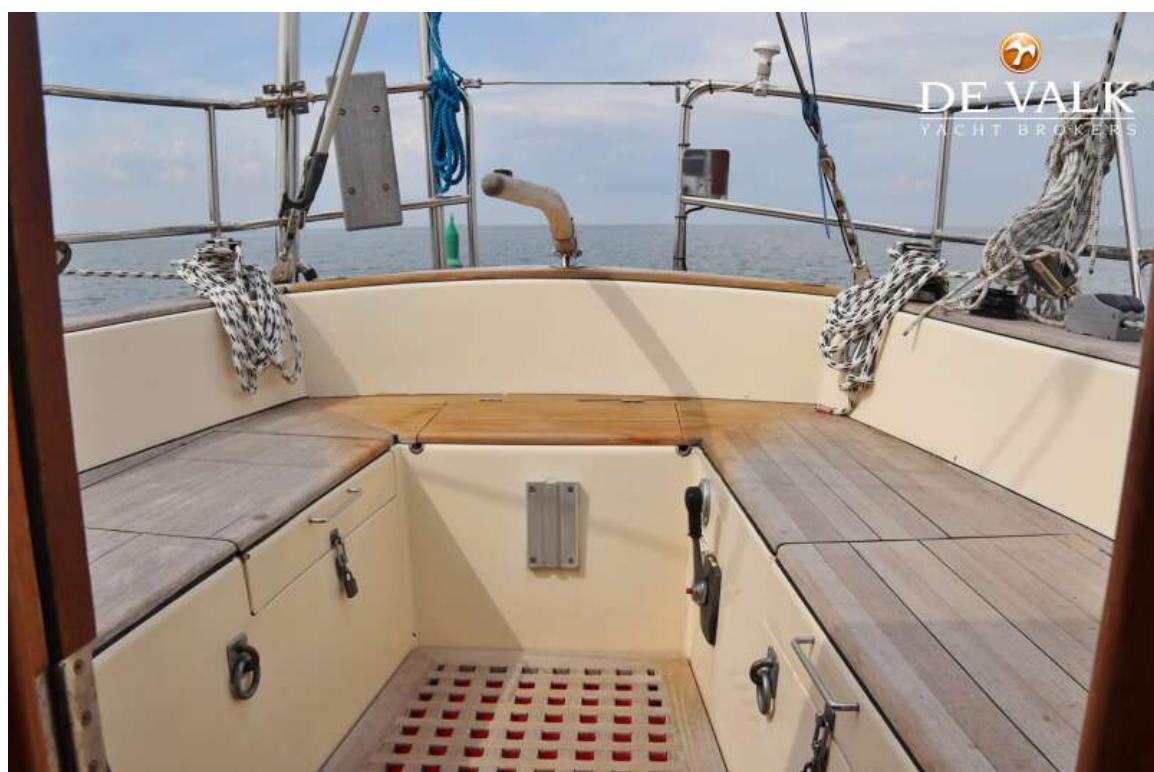
## TALING MS 33







## TALING MS 33



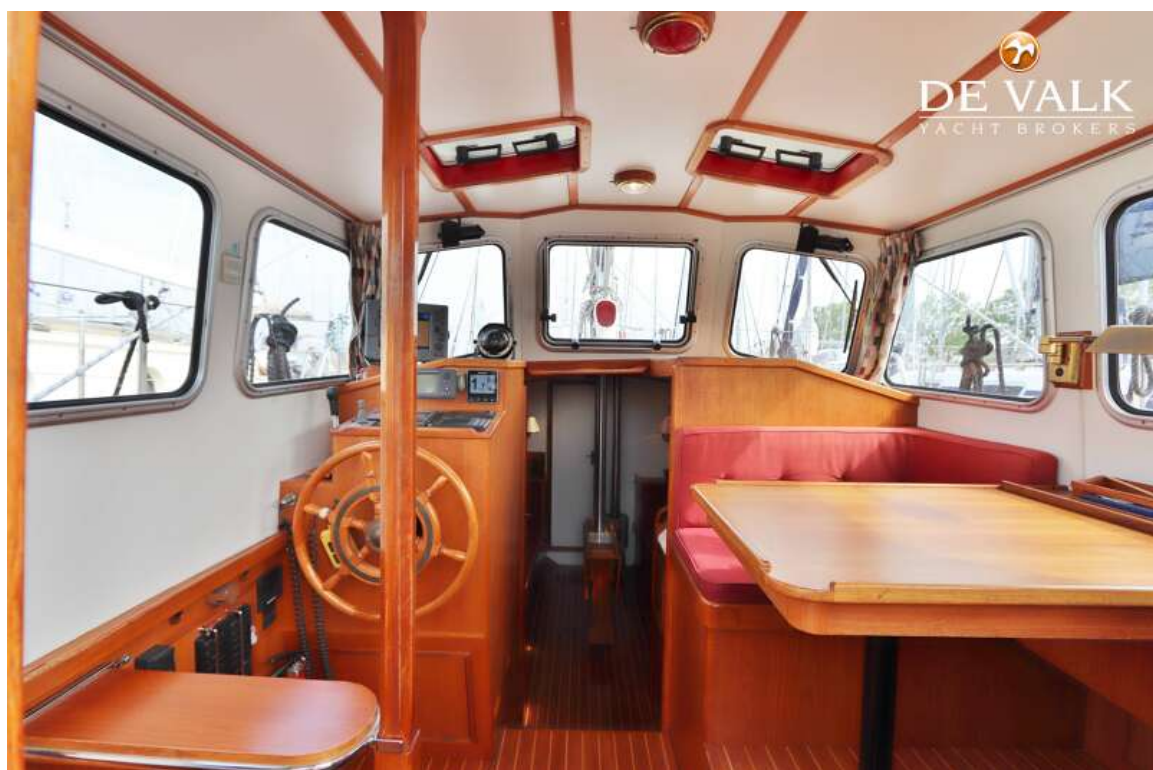
## TALING MS 33







## TALING MS 33

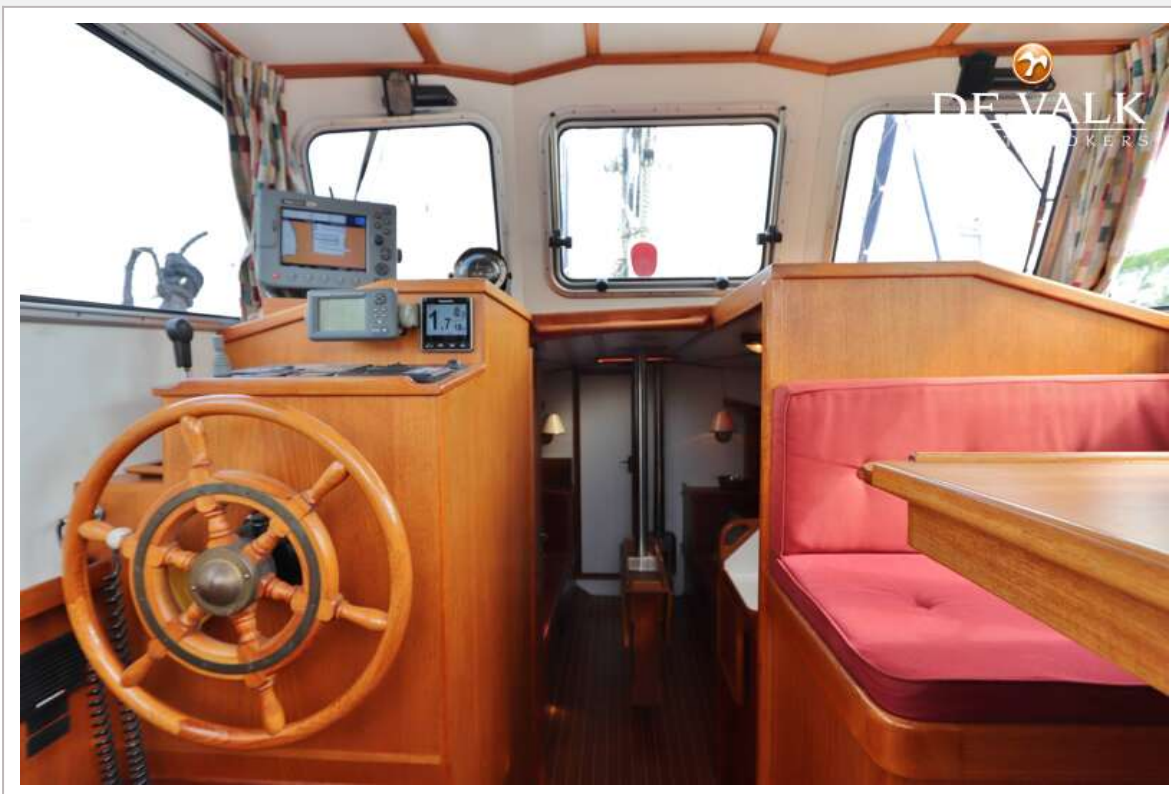




# TALING MS 33



# TALING MS 33

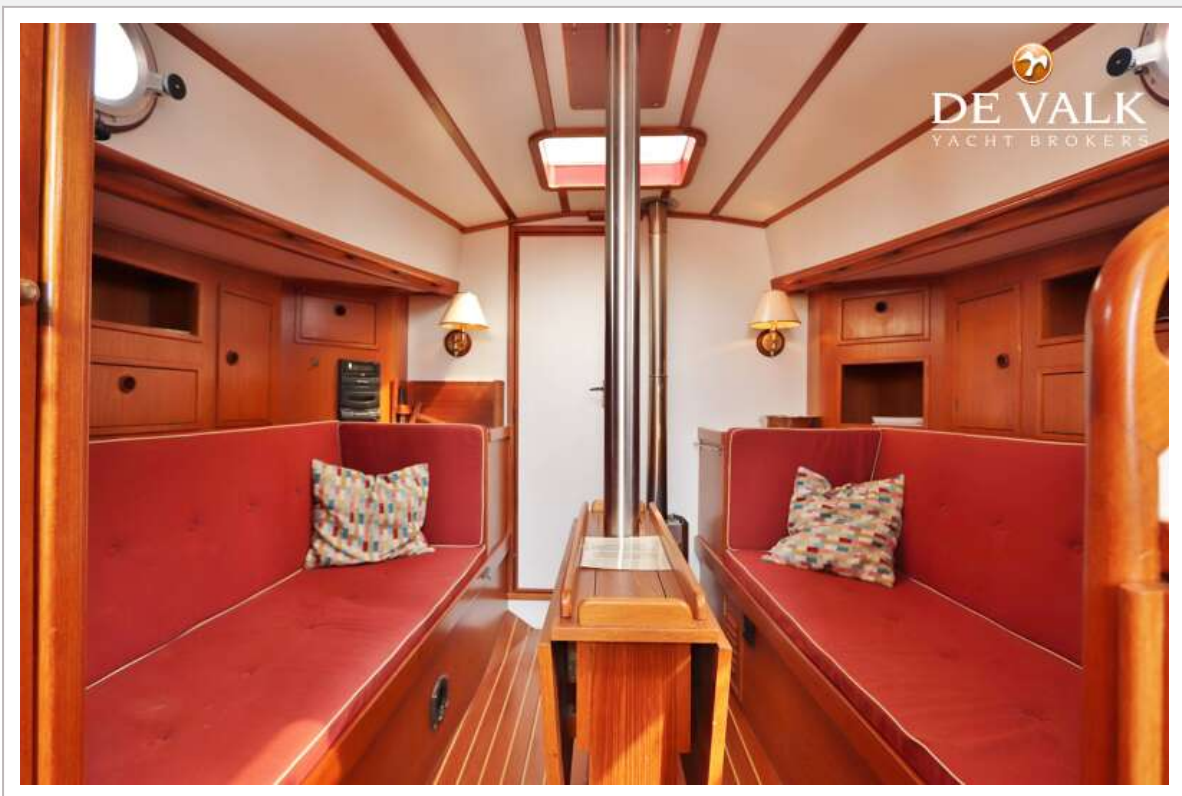




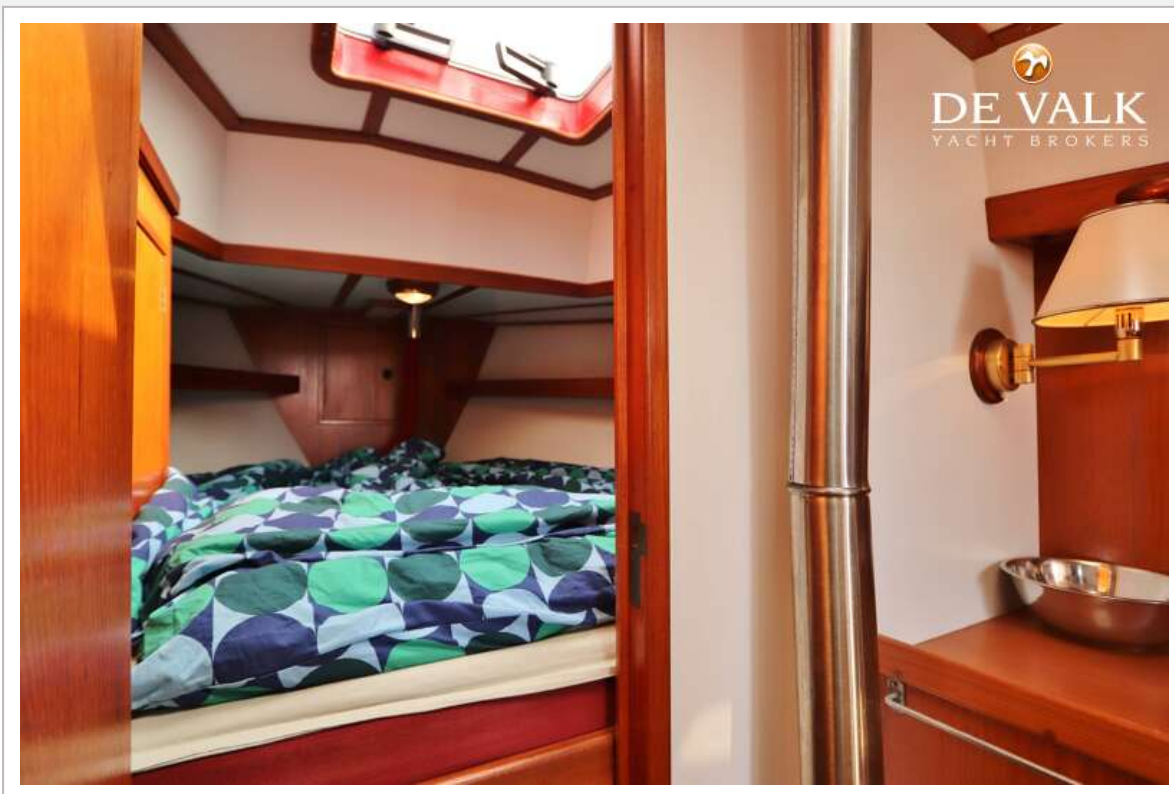




# TALING MS 33



## TALING MS 33





## TALING MS 33



# TALING MS 33





# TALING MS 33

