



TRADER 42 SIGNATURE

TRADER 42 SIGNATURE

BROKER'S COMMENTS

The Trader 42 Signature is a motor yacht made of polyester, but built just as heavily as steel. The 42 was designed by Tony Castro. High build quality and beautifully finished. With 2 Cummins engines of 380 hp, this ship is extremely suitable for long sea voyages with her semi displacement hull. The current owner has done a few big upgrades, he added a sternthruster, airconditioning and new cushions. The Trader 42 punctually, convince yourself and come by for a viewing.

Mark Hesselmans

SPECIFICATIONS

Dimensions	13.30 x 4.30 x 1.20 (m)	Builder	Trader Motoryachts
Built	2008	Cabins	3
Material	GRP	Berths	6
Engine(s)	2 x CUMMINS QSB5,9 diesel	Hp/Kw	2 x 380.00 (hp), 279.68 (kw)
Asking price	€ 345.000 (VAT Paid)	Lying	at sales office

CONTACT

Sales office	De Valk Loosdrecht B.V.	Telephone	+31 (0)35 582 90 30
Address	't Breukeleveense Meentje 6 1231LM Loosdrecht / Wijdmeren NL	E-mail	loosdrecht@devalk.nl

DISCLAIMER

These particulars are given in good faith as supplied but cannot be guaranteed.



GENERAL

Model	TRADER 42 SIGNATURE
Type	motor yacht
LOA (m)	13,30
Beam (m)	4,30
Draft (m)	1,20
Air draft min (m)	3,60
Year built	2008
Builder	Trader Motoryachts
Country	Taiwan
Displacement (t)	13,8
CE norm	A
Hull material	GRP
Hull colour	white
Hull shape	V-shaped hull
Superstructure material	GRP
Rubbing strake	stainless steel
Deck material	GRP
Deck finish	teak
Superstructure deck finish	paint
Cockpit deck finish	teak
Antifouling (year)	2024
Window frame	stainless steel
Window material	glass
Deckhatch	1x
Portholes	stainless steel
Radar arch	collapsible
Fuel tank (litre)	steel 1700 L
Level indicator (fuel tank)	yes
Freshwater tank (litre)	steel 600 L
Level indicator (freshwater)	yes



Blackwater tank (litre)	230 L
Level indicator (blackwater)	yes
Blackwater tank extraction	deck extraction + pump
Wheel steering	hydraulic
Outside helm position	hydraulic

ACCOMMODATION

Cabins	3
Berths	6
Interior	teak
Floor	parquet
Aft deck	yes
Heating	diesel ducted hot air
Air-conditioning	single cycle airco Webasto Bluecool V-series (2023)
Aft Cabin	yes
Dinette	yes
Sliding door to aft deck	yes
Galley	yes
Countertop	corian
Sink	stainless steel
Cooker	ceramic
Oven	yes
Microwave/oven combi	yes
Fridge	New fridge (2026)
Freezer	yes
Hot water system	220V + engine 220V + motor 50L
Water pressure system	electrical
Owners cabin	double bed
Wardrobe	drawers and shelves
Bathroom	en suite
Toilet	en suite



Toilet system	electric
Wash basin	in the bathroom
Shower	en suite
Guest cabin 1	v-bed
Wardrobe	hanging
Bathroom	shared
Toilet	shared
Toilet system	electric
Wash basin	in the bathroom
Shower	shared
Guest cabin 2	twin single L-shape bunk bed
Washing machine/dryer combi	yes

MACHINERY

No of engines	2
Make	CUMMINS
Type	QSB5,9
HP	380
kW	279.68
Fuel	diesel
Maximum speed (kn)	24
Cruising speed (kn)	8
Consumption (l/hr)	12
Engine cooling system	freshwater heat exchanger
Drive	shaft
Engine controls	electrical
Gearbox	hydraulic
Engine controls	electrical
Bowthruster	electric 8 hp
Sternthruster	electric New 2021
Gearbox	hydraulic



Exhaust	watercooled
Thrust bearing	yes
Propeller type	fixed
Propeller shaft material	stainless steel
Shaft lubrication	water
Manual bilge pump	yes
Electric bilge pump	yes
Electrical installation	24V/220V
Generator	wet exhaust Mastervolt 6kW
Start battery	Mastervolt 200 Ah (1)
Service battery	Mastervolt 400 Ah (2)
Battery monitor	yes
Battery charger/inverter	Mastervolt 12V/2000W/100A
Shorepower	with cable
Trimtabs	yes

NAVIGATION

Compass	yes
Depth sounder	yes
Log	yes
VHF	Raymarine 240E
Autopilot	Raymarine St6000
AIS receiver	yes
Navigation lights	yes
Searchlight	yes
Extra info	Remote controle Hydronautica

EQUIPMENT

Sprayhood	yes
Cockpit cover	Renewed
Bimini	Completely renewed 2023



Cockpit cushions	Completely renewed 2021
Bathing platform	yes
Boarding ladder	stainless steel
Anchor	CQR Plough 27kg
Anchor chain	60m stainless steel
Windlass	electrical
Deck wash	yes
Davits	stainless steel
Davits controls	electrical
Sea railing	stainless steel
Railing side opening gates	Both sides
Wiper	2x
Horn	yes
Fenders	yes
Mooring lines	yes
TV	yes
Cockpit speakers	yes
Speakers in salon	yes
Extra info	Aft deck cover



TRADER 42 SIGNATURE



TRADER 42 SIGNATURE



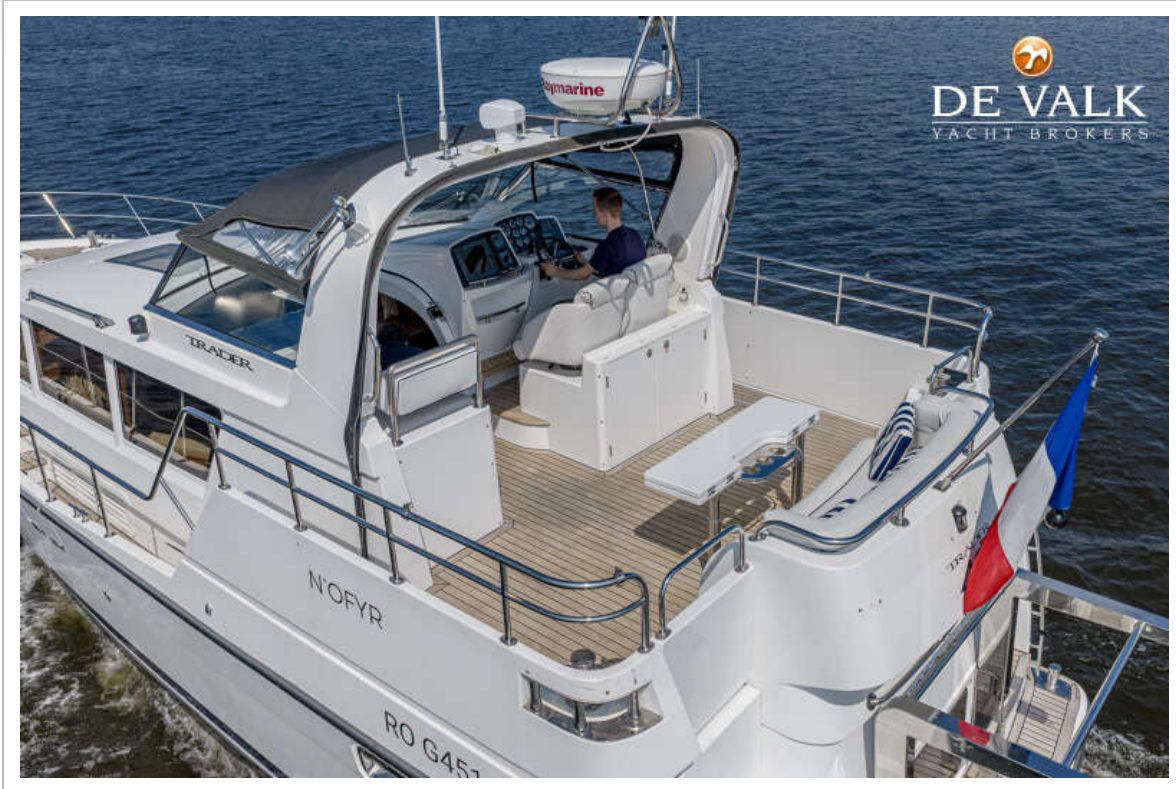
TRADER 42 SIGNATURE



TRADER 42 SIGNATURE



TRADER 42 SIGNATURE



TRADER 42 SIGNATURE



TRADER 42 SIGNATURE



TRADER 42 SIGNATURE



TRADER 42 SIGNATURE



TRADER 42 SIGNATURE



TRADER 42 SIGNATURE



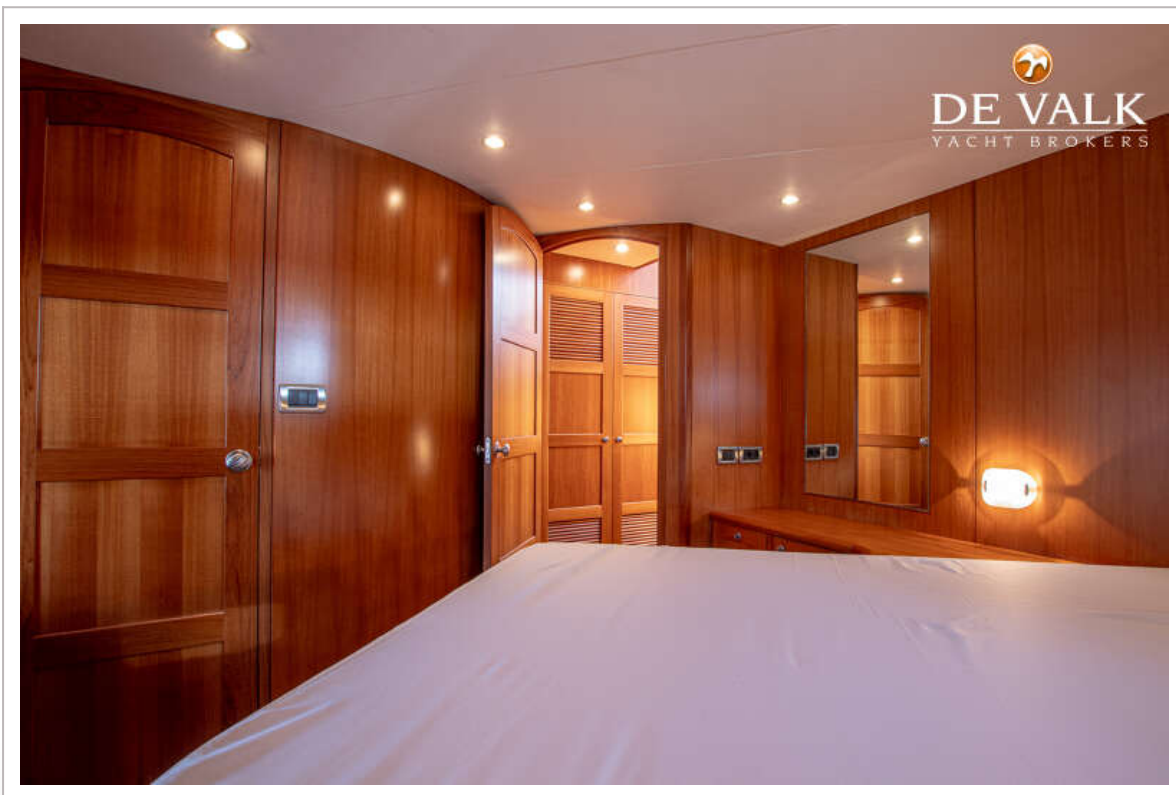
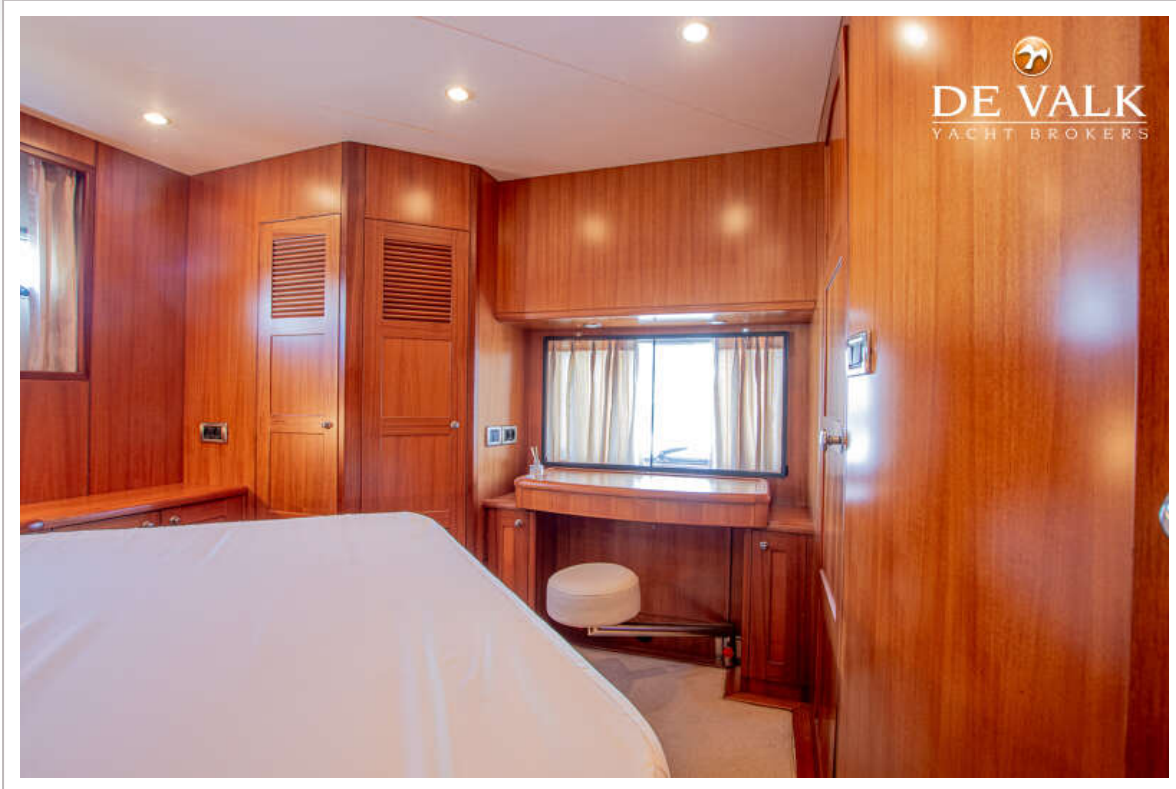
TRADER 42 SIGNATURE



TRADER 42 SIGNATURE



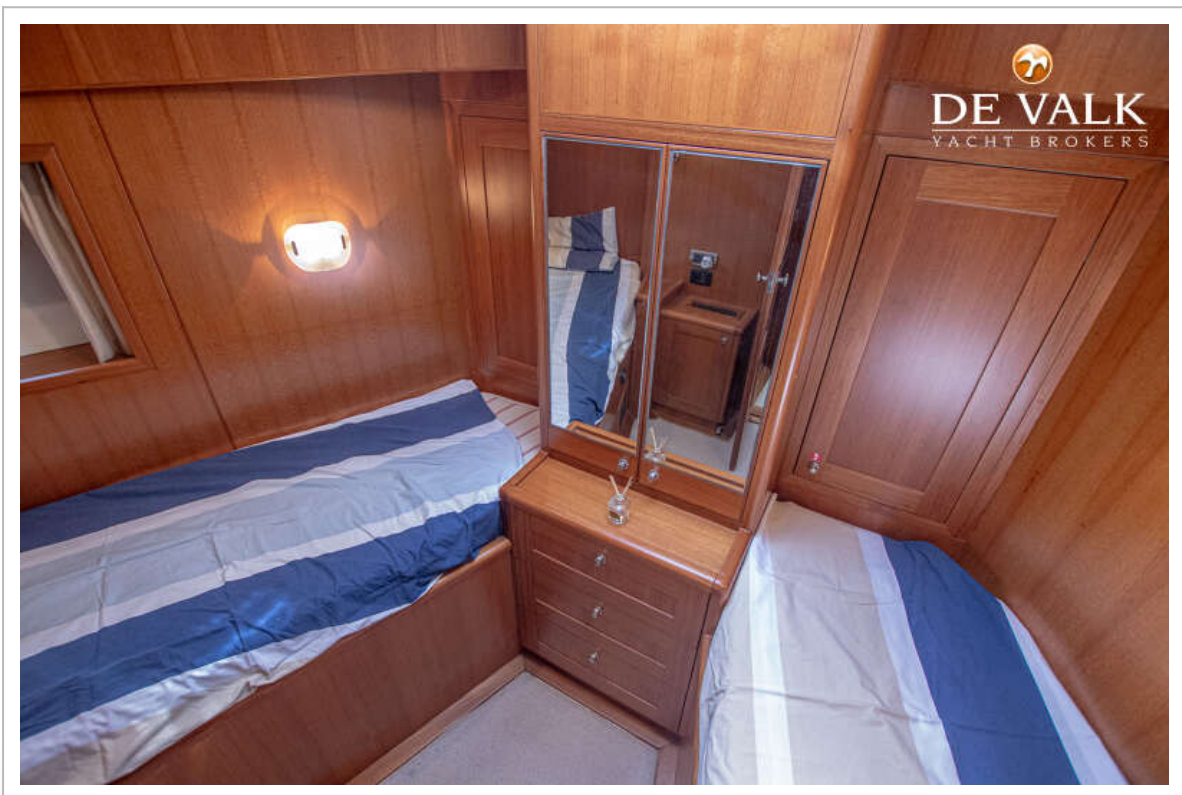
TRADER 42 SIGNATURE



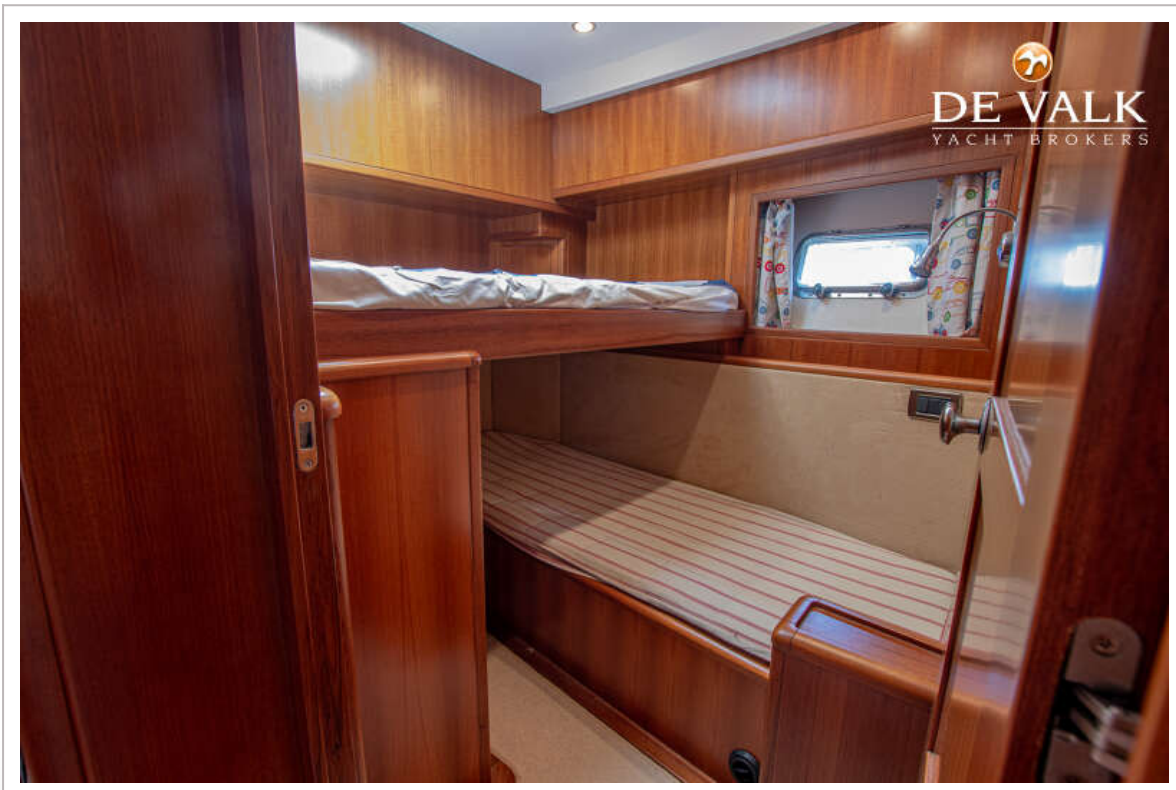
TRADER 42 SIGNATURE



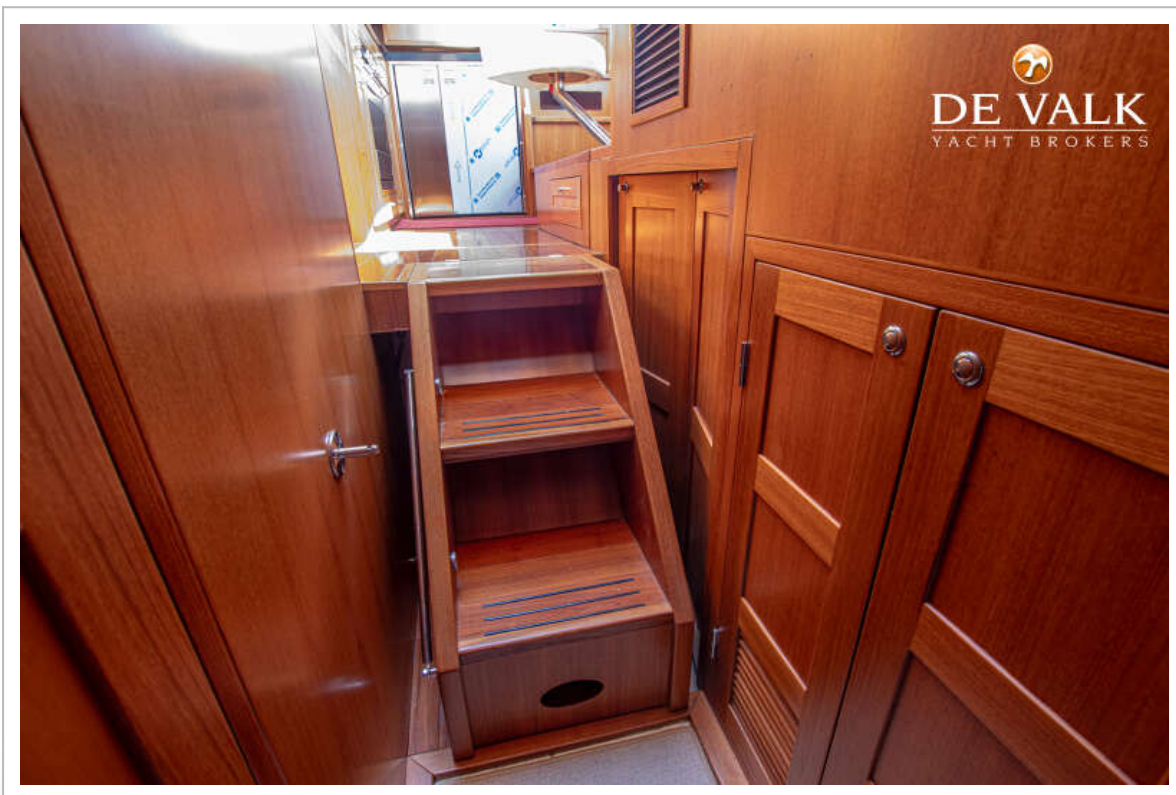
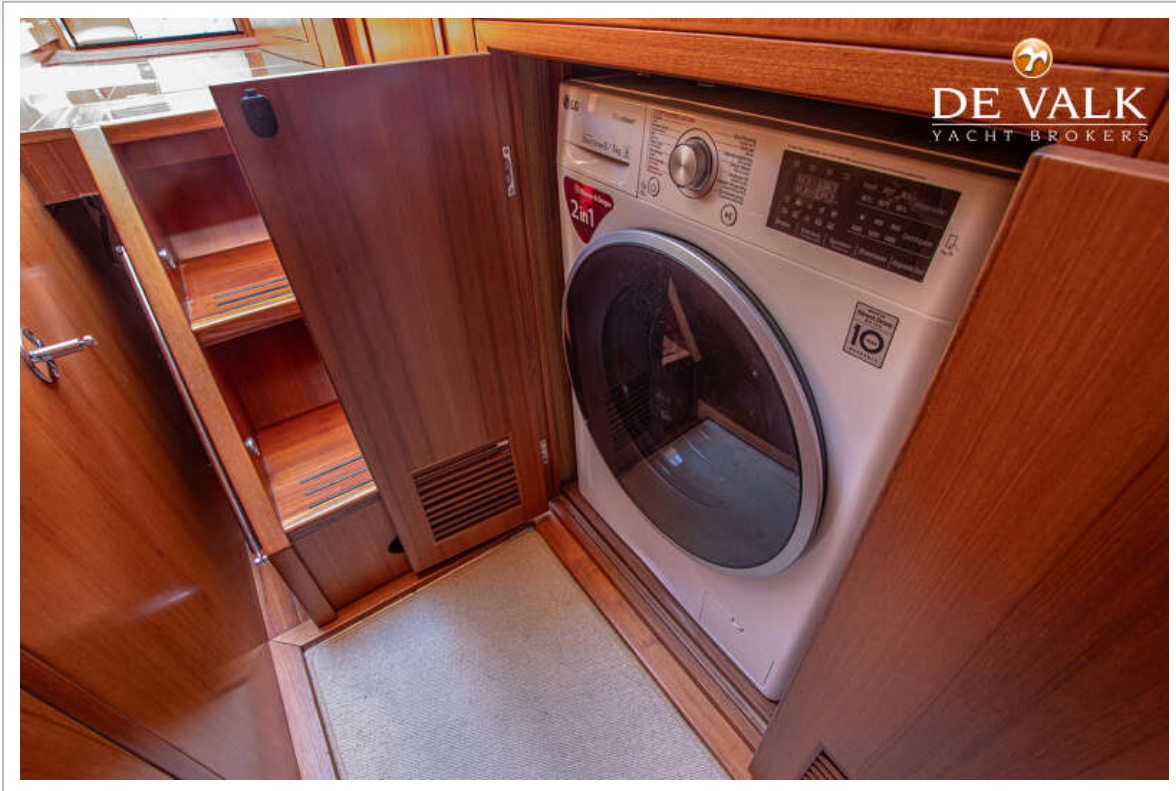
TRADER 42 SIGNATURE



TRADER 42 SIGNATURE



TRADER 42 SIGNATURE



TRADER 42 SIGNATURE

