



DE VALK
YACHT BROKERS



STEPHENS BROTHERS 43 COMMUTER CLASSIC



DE VALK
YACHT BROKERS

STEPHENS BROTHERS 43 COMMUTER CLASSIC

BROKER'S COMMENTS

This unique typical 1930s motor yacht, from the famous Stephens Bros yard, is a yacht that truly deserves the title "Eyecatcher". She has undergone a complete professional and very sympathetic restoration under the supervision of her experienced owner. All while retaining its original build quality and character, but also with new engines and using modern materials. Everything is well documented and the yacht was recently independently surveyed (10-2023) with good results.

Marc Weijenberg

SPECIFICATIONS

Dimensions	13.00 x 3.50 x 1.00 (m)	Builder	Stephens Brothers Yard Stockton, Cal.
Built	1931	Cabins	2
Material	Wood	Berths	4
Engine(s)	2 x Yanmar JHT 110 diesel	Hp/Kw	2 x 110.00 (hp), 80.85 (kw)
Asking price	sold (VAT)	Lying	elsewhere / Not at sales office

CONTACT

Sales office	De Valk Thuishaven	Telephone	+31 35 5829042
Address	Peperstraat 7 1411 PX Naarden NL	E-mail	thuishaven@devalk.nl

DISCLAIMER

These particulars are given in good faith as supplied but cannot be guaranteed.



STEPHENS BROTHERS 43 COMMUTER CLASSIC

GENERAL

Model	STEPHENS BROTHERS 43 COMMUTER CLASSIC
Type	motor yacht
LOA (m)	13,00
Beam (m)	3,50
Draft (m)	1,00
Air draft (m)	3,50
Headroom (m)	1,90
Year built	1931
Builder	Stephens Brothers Yard Stockton, Cal.
Country	U.S.A.
Designer	Stephen Brothers
Displacement (t)	11
Hull material	wood
Hull colour	white
Hull shape	round-bilged
Superstructure material	teak
Rubbing strake	yes
Deck material	teak
Superstructure deck finish	paint
Cockpit deck finish	teak
Antifouling (year)	10-2023
Dorades	yes
Window material	glass
Deckhatch	yes
Portholes	yes
Mast can be lowered	manual
Fuel tank (litre)	steel 300 + 270 ltrs
Level indicator (fuel tank)	yes
Freshwater tank (litre)	stainless steel 1 x 250 ltrs
Wheel steering	cable steering



STEPHENS BROTHERS 43 COMMUTER CLASSIC

More info on hull

Extra info

Hull re-painted 10-2023

Sleek hull with a long waterline ensures good speed, up to 10 knots. With twin modern Yanmar diesels you can go a long way without burner to much fuel. Her headway is 3,50 (mast and fittings lowered) so cruising the French canals is also possible.

Extra info

The professional restauration was carried out by Oceanwide Yachting Group, Netherlands. A comprehensive PDF file is available with more details concerning her restoration, history and current owner comments on how he came about the purchase of the true Gentleman's motor yacht.

Extra info

The owner has had a independent full survey carried out in October 2023, including a survey report available. Transport of A'Dora Blue can be arranged. Transport Rotterdam - Turkey approx. € 22.000,- Transport to USA (East Coast) approx. \$ 23.500,- / \$ 30.000,- And she will be prepared for the 2024 season.

ACCOMMODATION

Cabins

2

Berths

4

Interior

teak

Layout

2 cabins, wheelhouse, galley and 2 x bathroom

Floor

teak

Open cockpit

yes

Pilot house/deck saloon

With seating area and two sliding doors. Ample ventilation (classic opening windows) and light.

Headroom saloon (m)

1,96-1,90 mtr

Heating

Ahtelco model 1655 stove + small Gimeg gas heater

Opening door to cockpit

yes

Galley

yes

Countertop

Teak

Sink

emaille Original from 1931

Cooker

calor gas Smev 2 burner

Oven

Smev



STEPHENS BROTHERS 43 COMMUTER CLASSIC

Fridge	with freezer compartment Vitrifrigo (12v)
Hot water system	220V + engine
Water pressure system	electrical
Crockery	yes
Owners cabin	double bed
Bed length (m)	headroom 1,82 x 1,89 1,95 x 1,20
Wardrobe	hanging/drawers/shelves
Bathroom	en suite I
Toilet	en suite
Toilet system	manual Blake
Wash basin	yes
Guest cabin 1	twin single
Bed length (m)	2,00 x 0,95
Wardrobe	yes
Bathroom	II
Toilet	en suite
Toilet system	manual Blake
Wash basin	in the bathroom
Shower	en suite
Extra info	The interior in solid Teak has been kept original as much as possible. Implementing modern creature comforts without taking away that 1930's era look and feel was one of the owner's goals. Changing to much would change "A'dora Blu" character. Also many original details like the lights, fittings and others have been preserved. She has two cabin with one double bed and en-suite facilities and a twin single cabin aft. Also with en-suite bathroom and direct cockpit access. Lots of portholes, windows and hatches can be opened for ample ventilation and light.

MACHINERY

No of engines	2
Make	Yanmar
Type	JHT 110



STEPHENS BROTHERS 43 COMMUTER CLASSIC

HP	110
kW	80.85
Fuel	diesel
Year installed	2019
Maximum speed (kn)	10
Cruising speed (kn)	8
Consumption (l/hr)	30
Engine hours	162
Engine cooling system	freshwater heat exchanger
Drive	shaft
Engine controls	bowden cable
Gearbox	ZF
Exhaust	watercooled
Propeller type	yes
Propeller blades	bronze 3
Propeller shaft material	Bronze
Manual bilge pump	yes
Electric bilge pump	3 x automatic
Bilge alarm	yes
Electrical installation	12/220v
Start battery	2 x 110ah (2019)
Service battery	2 x 110ah (2019)
Battery monitor	yes
Battery charger	Victron Blue Smart Digital 3 x 12v-15amp
Inverter	Enrise 2500 W / max 5000 W (new 2023)
Shorepower	with cable
Extra info	<p>The original engine dashboards have been preserved. The engine control units have been custom made to fit the look and character of the wheelhouse. The modern Yanmar dashboards have been mounted semi-accessible underneath the helm station.</p>



STEPHENS BROTHERS 43 COMMUTER CLASSIC

NAVIGATION

Compass	Dirigo Leitz
Depth sounder	VDO
Log	VDO
VHF handheld	yes
Rudder angle indicator	MMD
Navigation lights	yes
Searchlight	yes

EQUIPMENT

Cockpit cover	yes
Cockpit cushions	yes
Cockpit table	2 x smaller ones in fixed position
Bathing platform	yes
Boarding ladder	yes
Gangway	yes
Deck shower	hot + cold
Anchor	Pool 25kg
Anchor chain	40 mtrs
Windlass	electrical 1931 original overhauled
Capstan	yes
Dinghy	rigid hull Classic Victoria Jol + rigging
Davits	yes
Davits controls	manual
Sea railing	steel Metal gun original stanchions and teak caprail
Grab rail (superstructure)	teak
Railing side opening gates	2 x
Lifebuoy	2 x
Wiper	1 x Excalto
Horn	air pressure
Fenders	yes



STEPHENS BROTHERS 43 COMMUTER CLASSIC

Mooring lines	yes
Spare parts	good assortment of maintenance and replacement materials
Radio-cd player	yes
Speakers in salon	yes
Fire extinguisher	yes
Latest extinguisher survey	2021
Extra info	Some personal items visible on the pictures are not included in the sale.



STEPHENS BROTHERS 43 COMMUTER CLASSIC



STEPHENS BROTHERS 43 COMMUTER CLASSIC



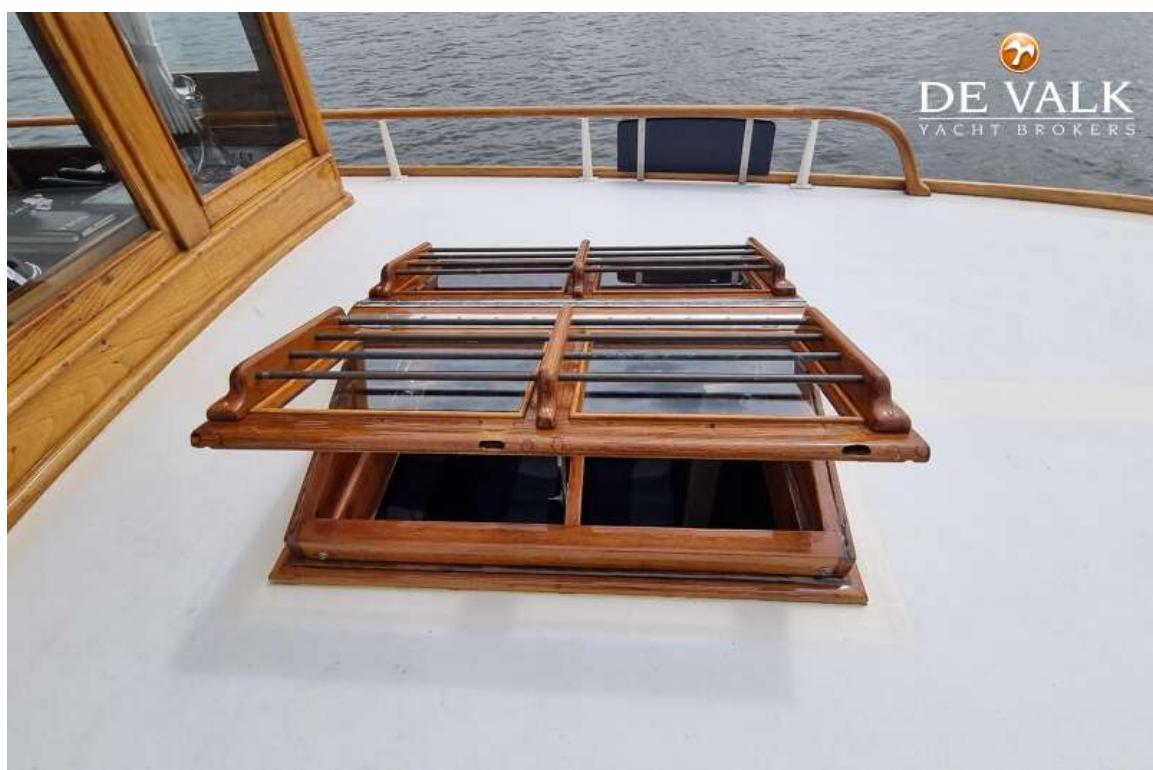
STEPHENS BROTHERS 43 COMMUTER CLASSIC



STEPHENS BROTHERS 43 COMMUTER CLASSIC



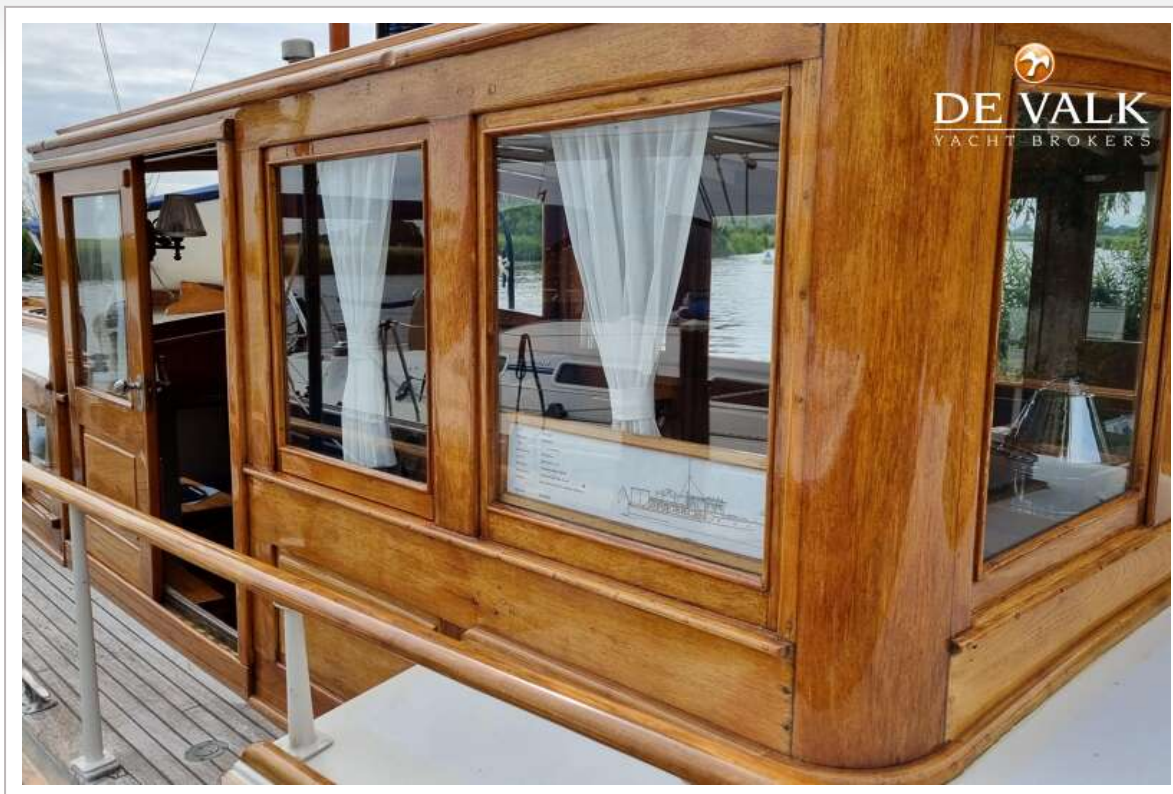
STEPHENS BROTHERS 43 COMMUTER CLASSIC



STEPHENS BROTHERS 43 COMMUTER CLASSIC



STEPHENS BROTHERS 43 COMMUTER CLASSIC



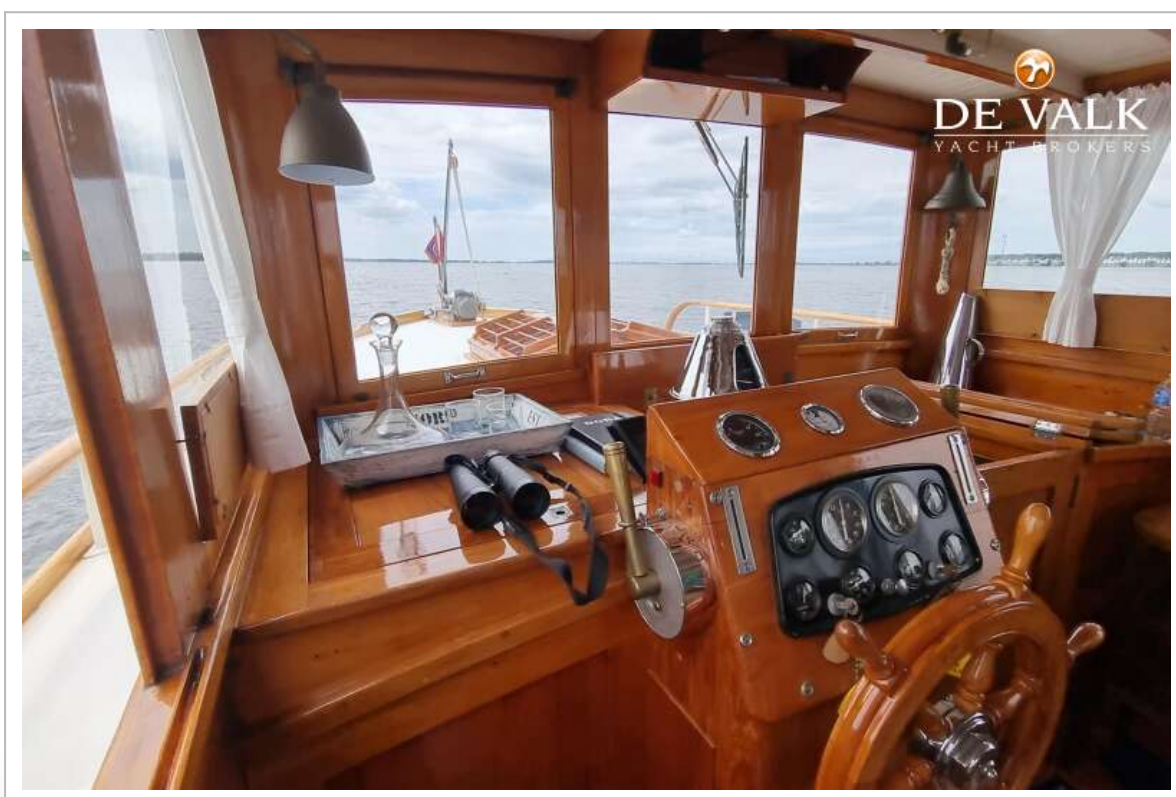
STEPHENS BROTHERS 43 COMMUTER CLASSIC



STEPHENS BROTHERS 43 COMMUTER CLASSIC



STEPHENS BROTHERS 43 COMMUTER CLASSIC



STEPHENS BROTHERS 43 COMMUTER CLASSIC



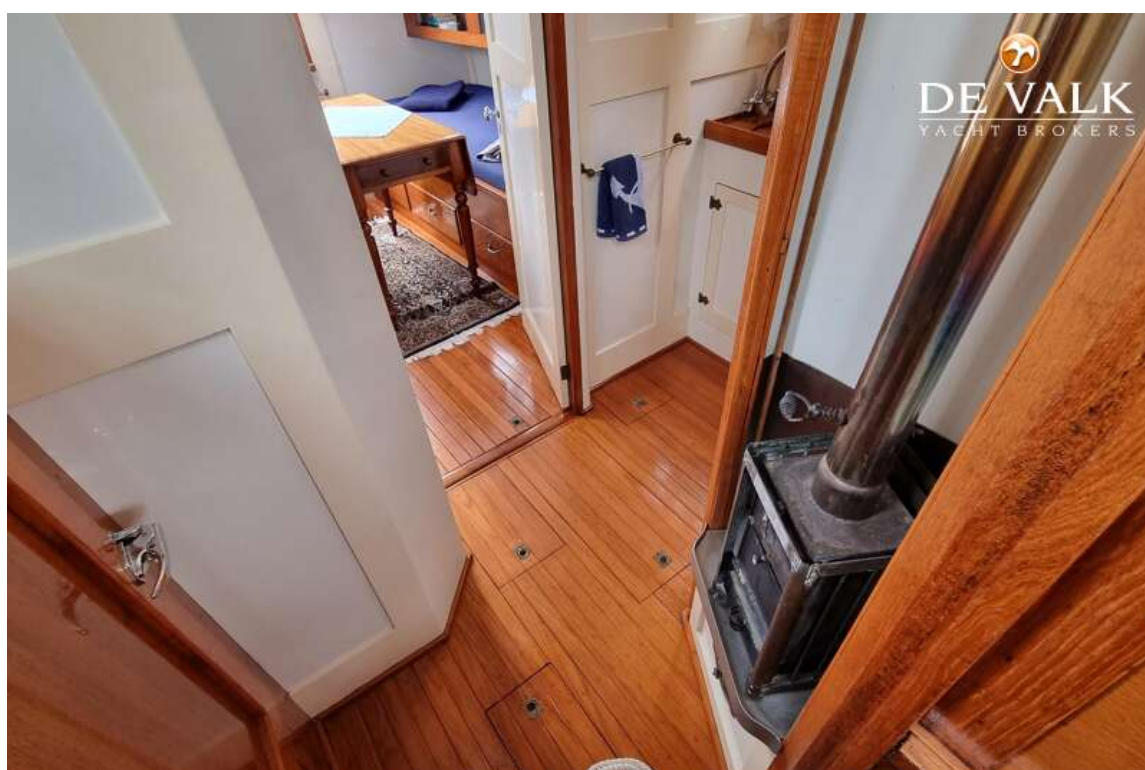
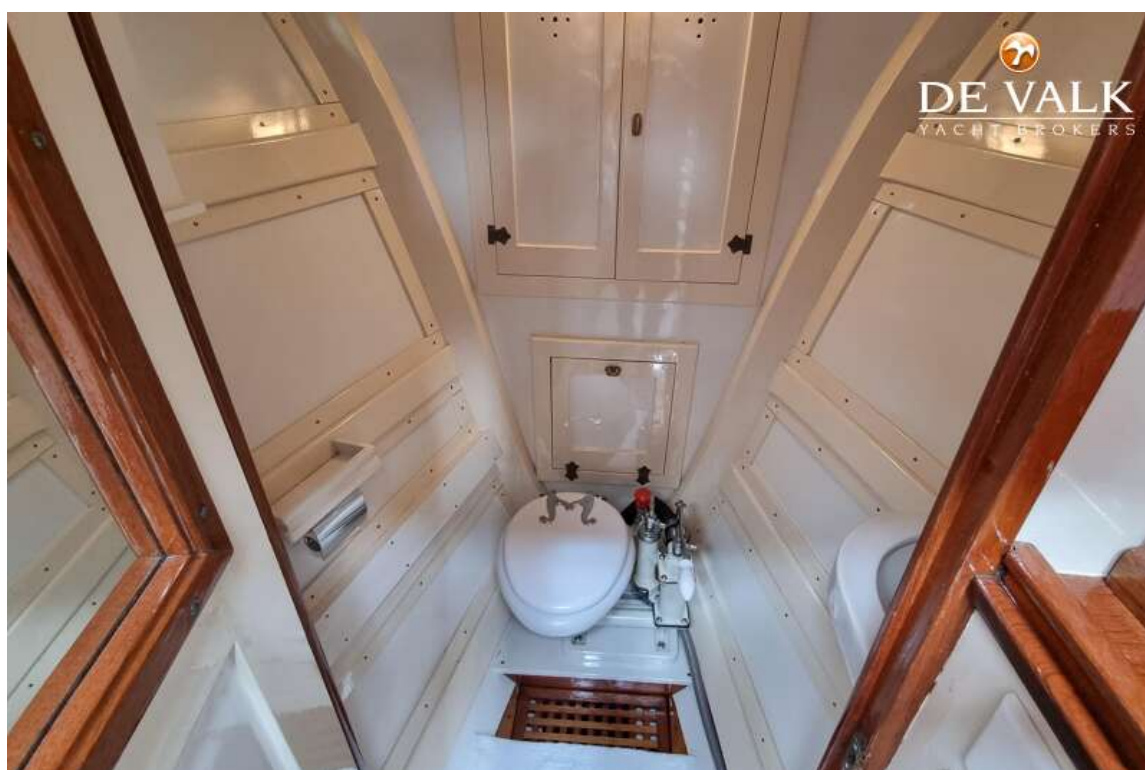
STEPHENS BROTHERS 43 COMMUTER CLASSIC



STEPHENS BROTHERS 43 COMMUTER CLASSIC



STEPHENS BROTHERS 43 COMMUTER CLASSIC



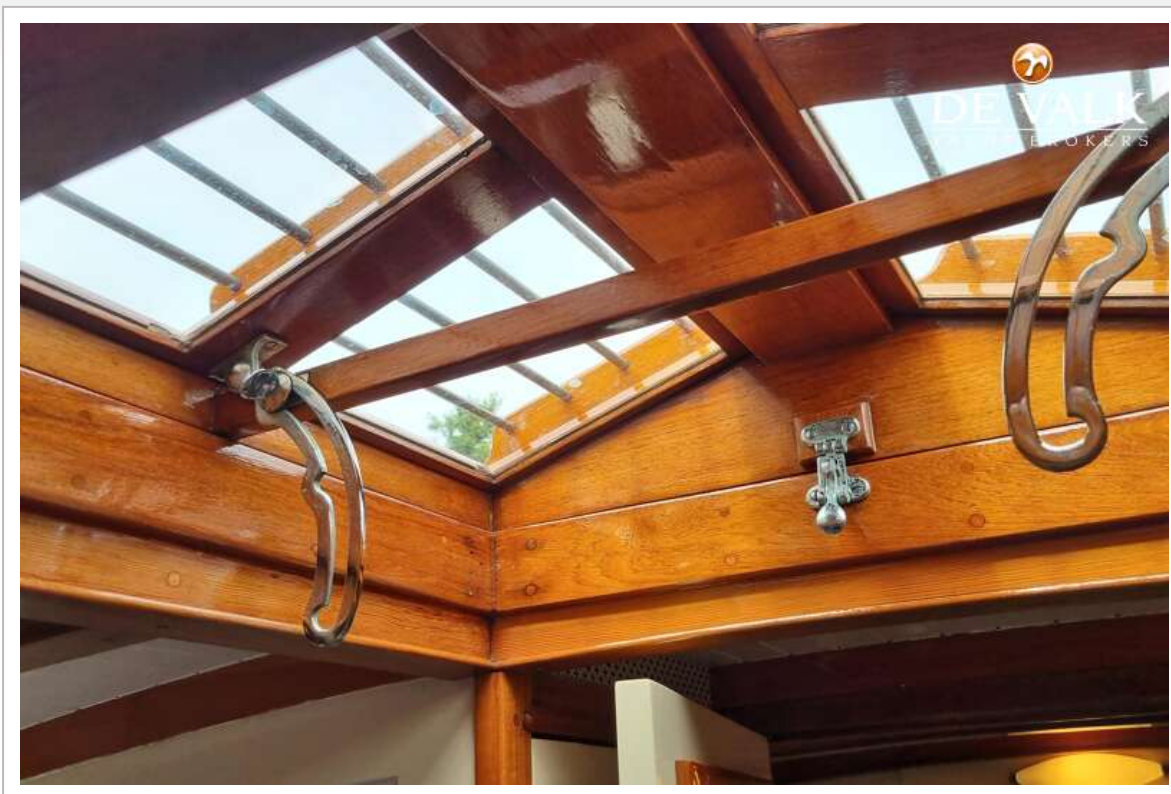
STEPHENS BROTHERS 43 COMMUTER CLASSIC



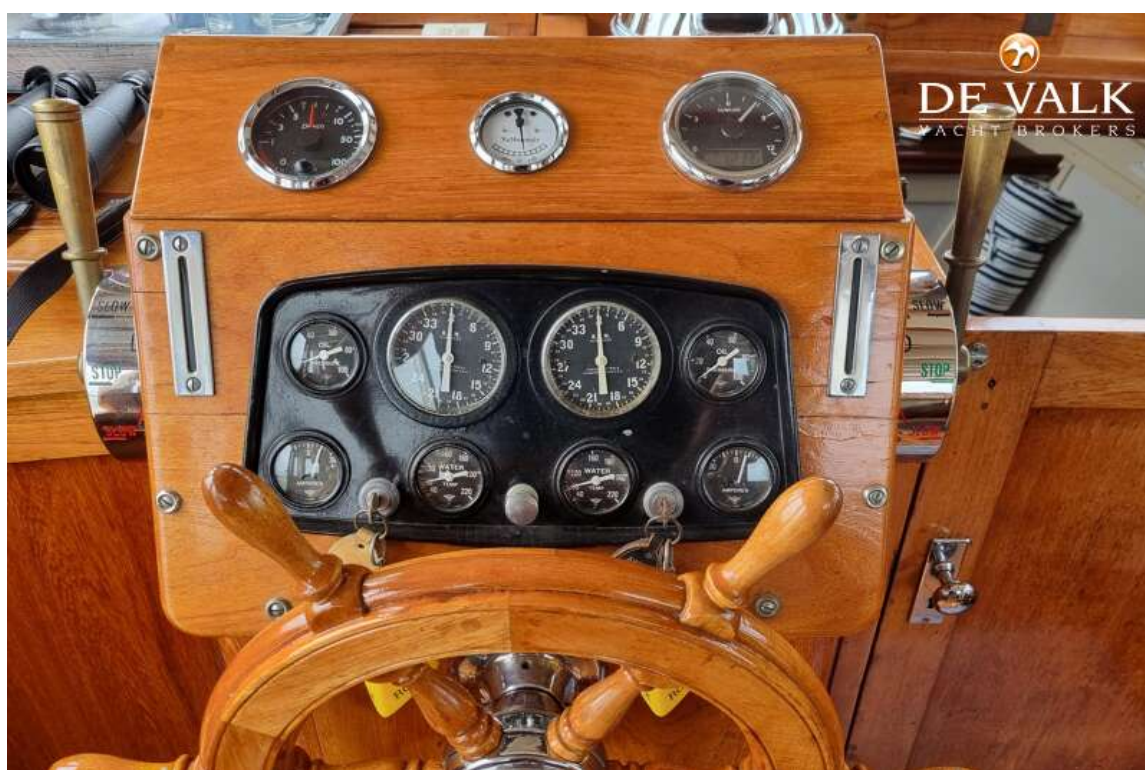
STEPHENS BROTHERS 43 COMMUTER CLASSIC



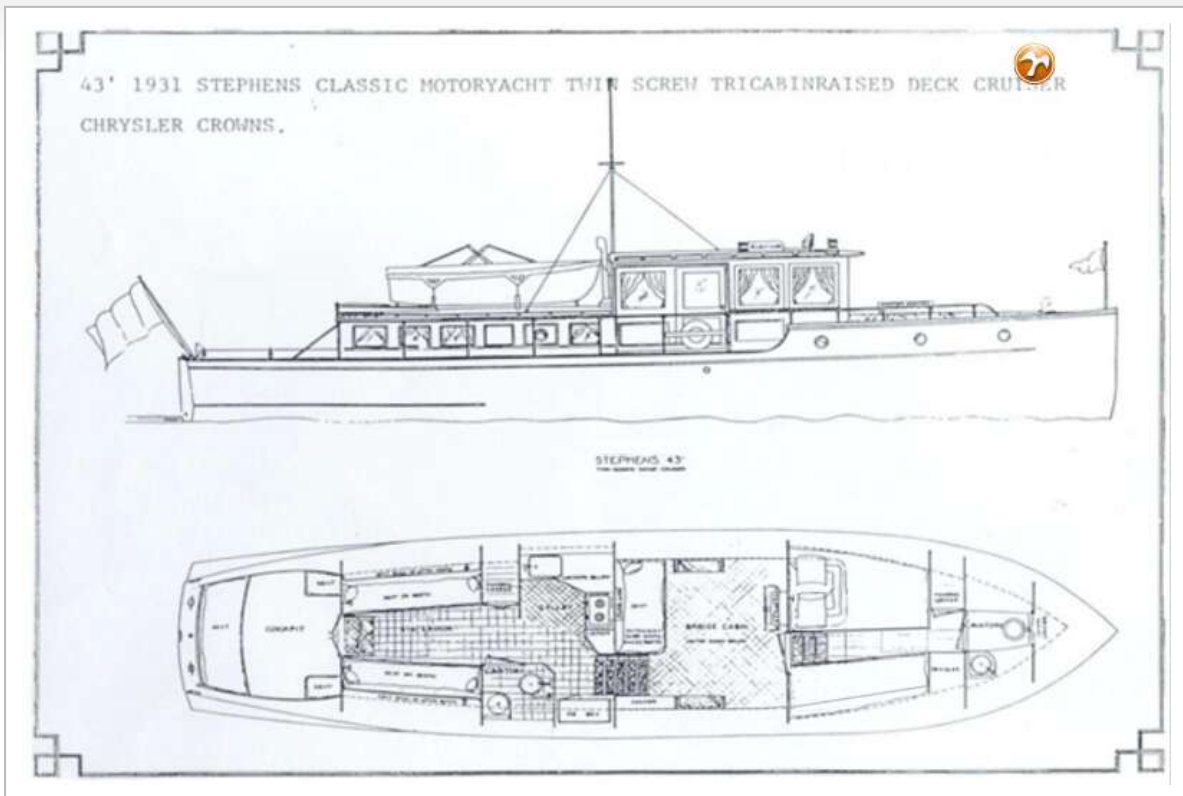
STEPHENS BROTHERS 43 COMMUTER CLASSIC



STEPHENS BROTHERS 43 COMMUTER CLASSIC



STEPHENS BROTHERS 43 COMMUTER CLASSIC



"STEPHENS 43"

**STEPHENS CRUISERS for 1931 are Standardized in
3 twin-engine models—43-48-55**

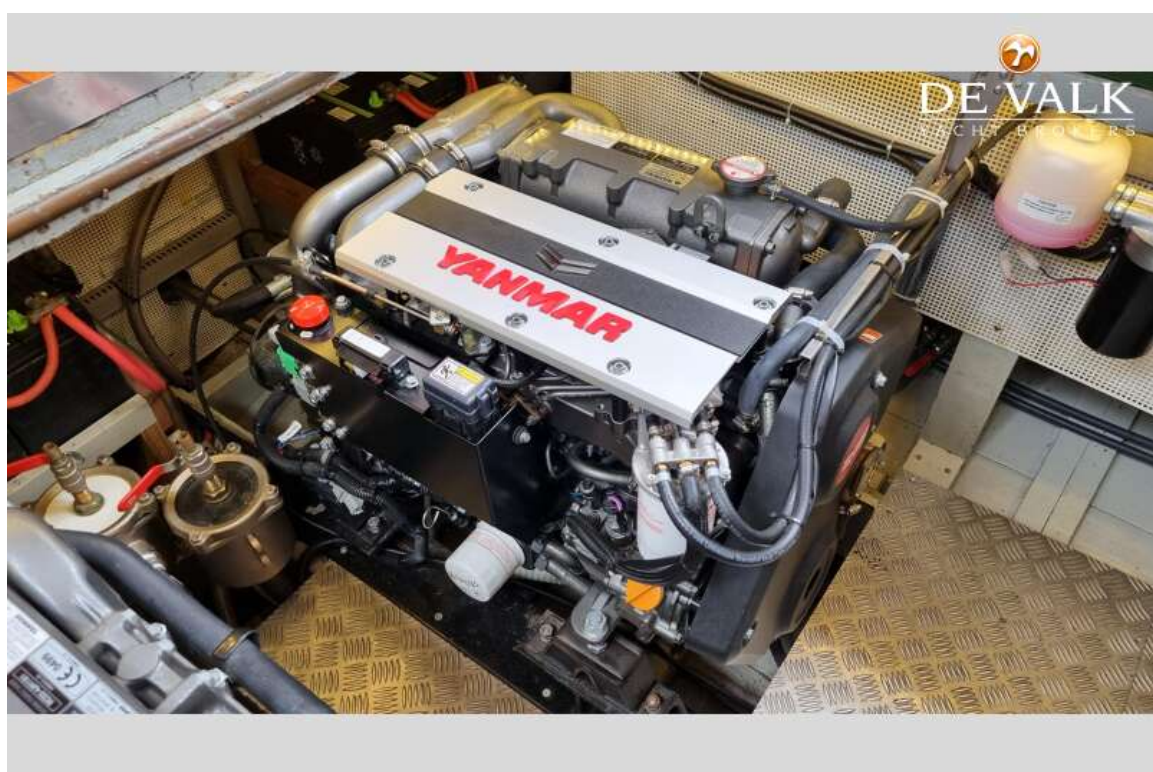
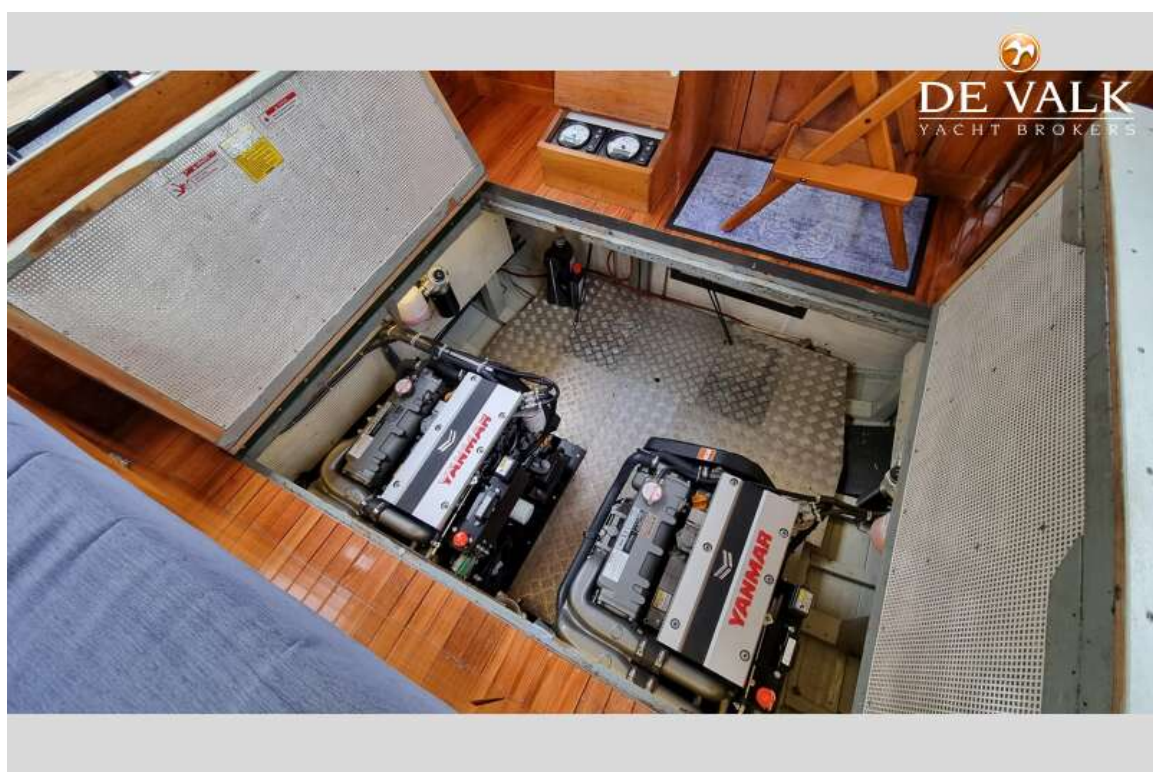
Orders now booked for
both ATLANTIC and
PACIFIC Coast
deliveries in 1931
clearly indicate the
rapidly increasing nation
wide popularity of
STEPHENS CRUISERS

Stephens **PLEASURE CRAFT**
Made to fit the water

Write for particulars.
STEPHENS BROTHERS



STEPHENS BROTHERS 43 COMMUTER CLASSIC



STEPHENS BROTHERS 43 COMMUTER CLASSIC

