



DE VALK  
YACHT BROKERS



## ALMTRAWLER 1600 AD



DE VALK  
YACHT BROKERS

# ALMTRAWLER 1600 AD

## BROKER'S COMMENTS

Almtrawler 1600 AD "Stoer" was built in 2004 at Jachtbouw de Alm in Werkendam. She is built under CE-A, which makes her suitable for a longer stay on board and for sailing on the seas and oceans. "Stoer" is equipped with a deck salon with panoramic views, two cabins, two bathrooms and a large flybridge. Well equipped with two Vetus Deutz diesel engines, bow thruster, generator, Kabola central heating and Vetus air conditioning.

*Mark Hesselmans*

## SPECIFICATIONS

<b>Dimensions</b>	16.80 x 4.80 x 1.40 (m)	<b>Builder</b>	De Alm BV Werkendam
<b>Built</b>	2004	<b>Cabins</b>	2
<b>Material</b>	Steel	<b>Berths</b>	4
<b>Engine(s)</b>	2 x Vetus Deutz DT 64 diesel	<b>Hp/Kw</b>	2 x 159.00 (hp), 117.02 (kw)
<b>Asking price</b>	sold (VAT )	<b>Lying</b>	contact Loosdrecht

## CONTACT

<b>Sales office</b>	De Valk Loosdrecht B.V.	<b>Telephone</b>	+31 (0)35 582 90 30
<b>Address</b>	't Breukeleveense Meentje 6 1231LM Loosdrecht / Wijdmeren NL	<b>E-mail</b>	loosdrecht@devalk.nl

## DISCLAIMER

These particulars are given in good faith as supplied but cannot be guaranteed.



# ALMTRAWLER 1600 AD

## GENERAL

Model	ALMTRAWLER 1600 AD
Type	motor yacht
LOA (m)	16,80
Beam (m)	4,80
Draft (m)	1,40
Air draft (m)	6,50
Air draft min (m)	3,50
Headroom (m)	2,00
Year built	2004
Builder	De Alm BV Werkendam
Country	The Netherlands
Displacement (t)	35
CE norm	A
Hull material	steel
Hull colour	blue
Hull thickness (mm)	6
Hull shape	multi hard chine
Keel type	tandem keel
Superstructure material	steel
Superstructure (mm)	4
Rubbing strake	rubber
Deck material	steel
Deck finish	non-skid paint Painted 2022
Superstructure deck finish	non-skid paint
Cockpit deck finish	non-skid paint
Antifouling (year)	2023
Dorades	yes
Window frame	aluminium
Window material	double glazing
Deckhatch	yes



# ALMTRAWLER 1600 AD

Portholes	aluminium
Insulation	rockwool
Flybridge	with new loungeset (2022)
Mast can be lowered	manual
Fuel tank (litre)	steel 1320
Fuel tank 2 (litre)	steel 1320
Level indicator (fuel tank)	yes
Fuel daytank (litre)	steel 310
Level indicator (daytank)	yes
Freshwater tank (litre)	stainless steel 1410
Level indicator (freshwater)	yes
Blackwater tank (litre)	stainless steel 550
Level indicator (blackwater)	yes
Blackwater tank extraction	deck extraction + pump Pump renewed in 2022
Wheel steering	hydraulic
Inside helm position	yes
Flybridge helm position	hydraulic
More info on paintwork	yes
Extra info	New cushions leather (2022)
Extra info	Extra exterior lights

## ACCOMMODATION

Cabins	2
Berths	4
Interior	teak
Floor	teak and holly & carpet (2022)
Open cockpit	yes
Pilot house/deck saloon	yes
Saloon	New blinds (2022)
Headroom saloon (m)	2,05
Heating	central heating Kabola B17 Tap (maintained 2022)



# ALMTRAWLER 1600 AD

Air-conditioning	single cycle airco Vetus 5kW (needs maintenance)
Chart table	yes
Dinette	yes
Opening door to cockpit	Teak
Galley	yes
Countertop	plastic
Sink	stainless steel
Cooker	ceramic Siemens 4-burners
Extractor	yes
Microwave/oven combi	Siemens Inowave
Fridge	Bosch KTR 18420
Freezer	Liebherr 2 lades
Hot water system	on central heating
Water pressure system	electrical
Dishwasher	Siemens
Owners cabin	French bed Electric beds and mattresses (2022)
Bed length (m)	2
Wardrobe	hanging/drawers/shelves
Bathroom	separate
Toilet	separate
Toilet system	electric Vetus (2022)
Wash basin	in the bathroom
Shower	separate
Extra info	yes
Guest cabin 1	French bed
Bed length (m)	2
Wardrobe	hanging/drawers/shelves
Bathroom	separate
Toilet	separate
Toilet system	electric
Wash basin	in the bathroom
Shower	Hoover 5+5 family



# ALMTRAWLER 1600 AD

Flybridge	yes
-----------	-----

## MACHINERY

No of engines	2
Make	Vetus Deutz
Type	DT 64
HP	159
kW	117.02
Fuel	diesel
Engine hours	2200
Engine cooling system	freshwater heat exchanger
Drive	shaft
Shaft seal	yes
Engine controls	bowden cable
Gearbox	hydraulic ZF45 1:2,5
Bowthruster	electric
Exhaust	watercooled
Propeller type	fixed
Propeller blades	4
Propeller shaft material	stainless steel
Shaft lubrication	water
Manual bilge pump	yes
Electric bilge pump	yes
Electrical installation	12V/24V/230V
Generator	silent separator Vetus 12kVA
Batteries	yes
Start battery	2x
Service battery	8x 200 Ah (2022)
Generator battery	1x 72 Ah
Bowthruster battery	1x
Windlass battery	1x



# ALMTRAWLER 1600 AD

Battery monitor	Victron BMV 501
Battery charger/inverter	2x Victron Phoenix Multiplus 24/3000/70 multicontrol
Solar panel	2x
Diode battery combiners	yes
Shorepower	with cable
Extra info	Service engines (2022)

## NAVIGATION

Electric compass	yes
Depth sounder/log	Raymarine ST60
VHF	Simrad RS82
Autopilot	2x Raymarine ST7001
Rudder angle indicator	Raymarine ST60
Radar/GPS/plotter	Raymarine Aixom 12 (2023)
Camera	yes
Navigation lights	yes
Searchlight	2022

## EQUIPMENT

Fixed windscreen	yes
Cockpit cover	yes
Bimini	Flybridge
Cockpit cushions	yes
Bathing platform	yes
Boarding ladder	stainless steel
Transom door	yes
Deck shower	yes
Anchor	Pool
Anchor chain	yes
Windlass	electrical Vetus 1500
Deck wash	yes



# ALMTRAWLER 1600 AD

Deck crane	manual Stainless steel
Sea railing	stainless steel
Railing side opening gates	4x
Lifebuoy	yes
Wiper	5x
Horn	yes
Fenders	yes
Mooring lines	yes
Satellite	yes
Radio-cd player	Bose
Surround Sound System	Bose
Speakers in salon	Bose
Clock - barometer	yes
Extra info	Anchor locker painted in 2022





# ALMTRAWLER 1600 AD



# ALMTRAWLER 1600 AD





# ALMTRAWLER 1600 AD



# ALMTRAWLER 1600 AD

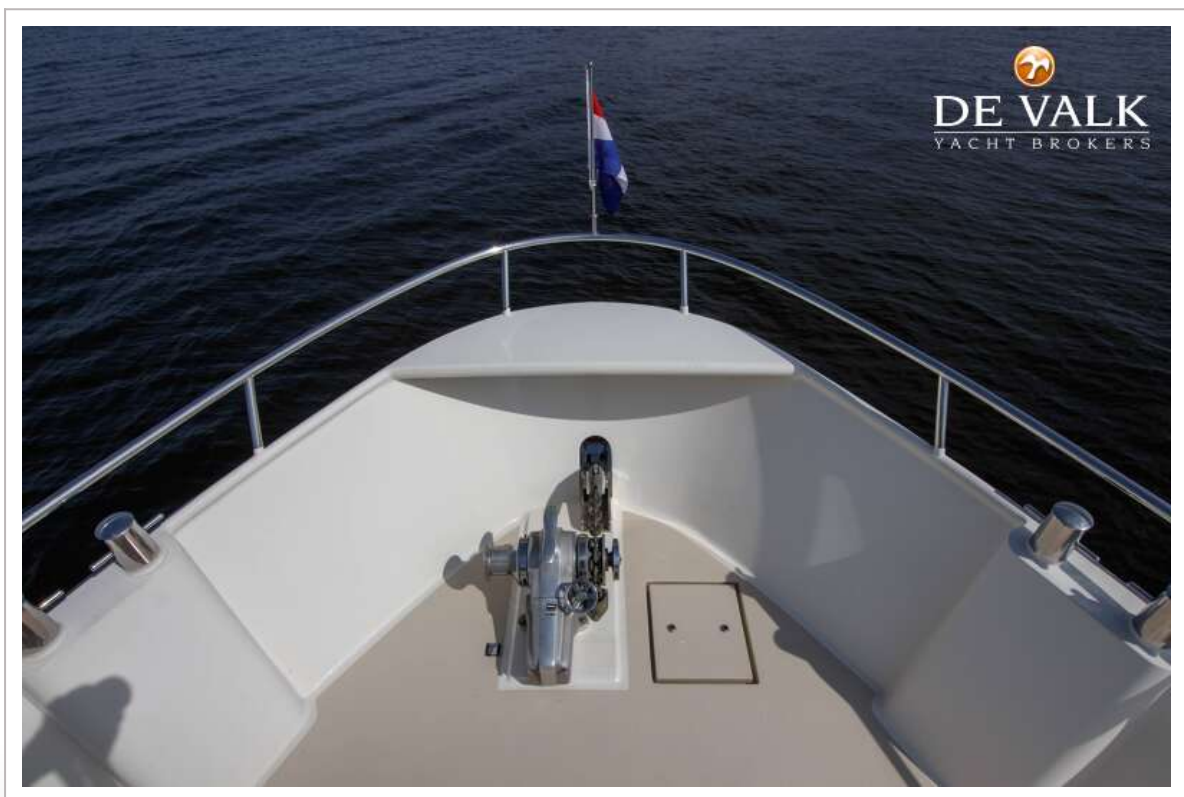


# ALMTRAWLER 1600 AD

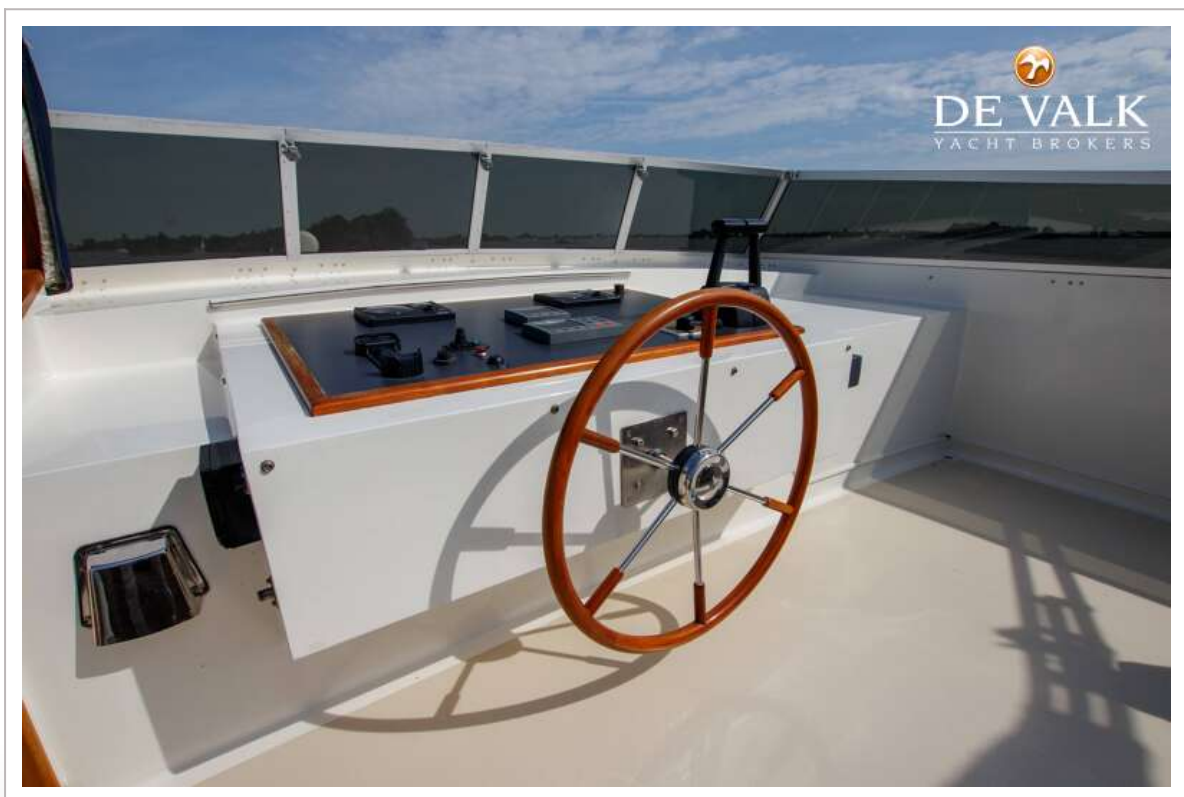
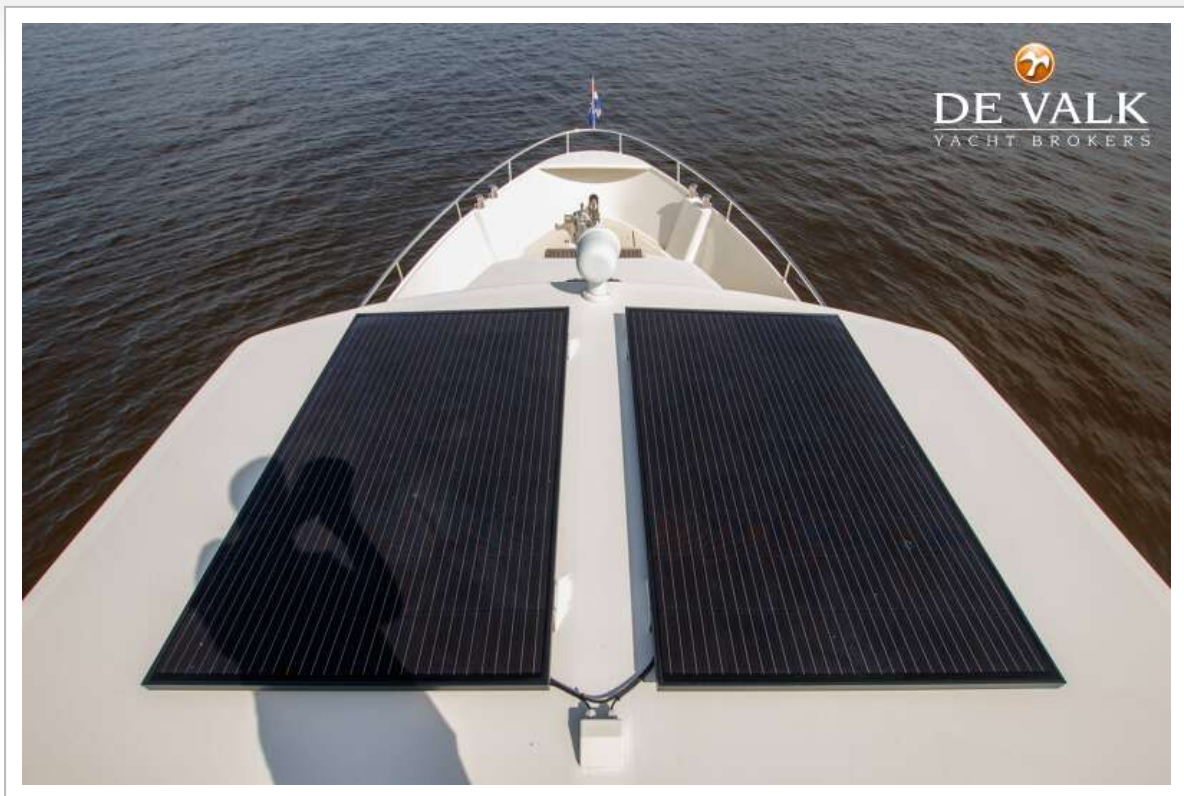




# ALMTRAWLER 1600 AD



# ALMTRAWLER 1600 AD





# ALMTRAWLER 1600 AD

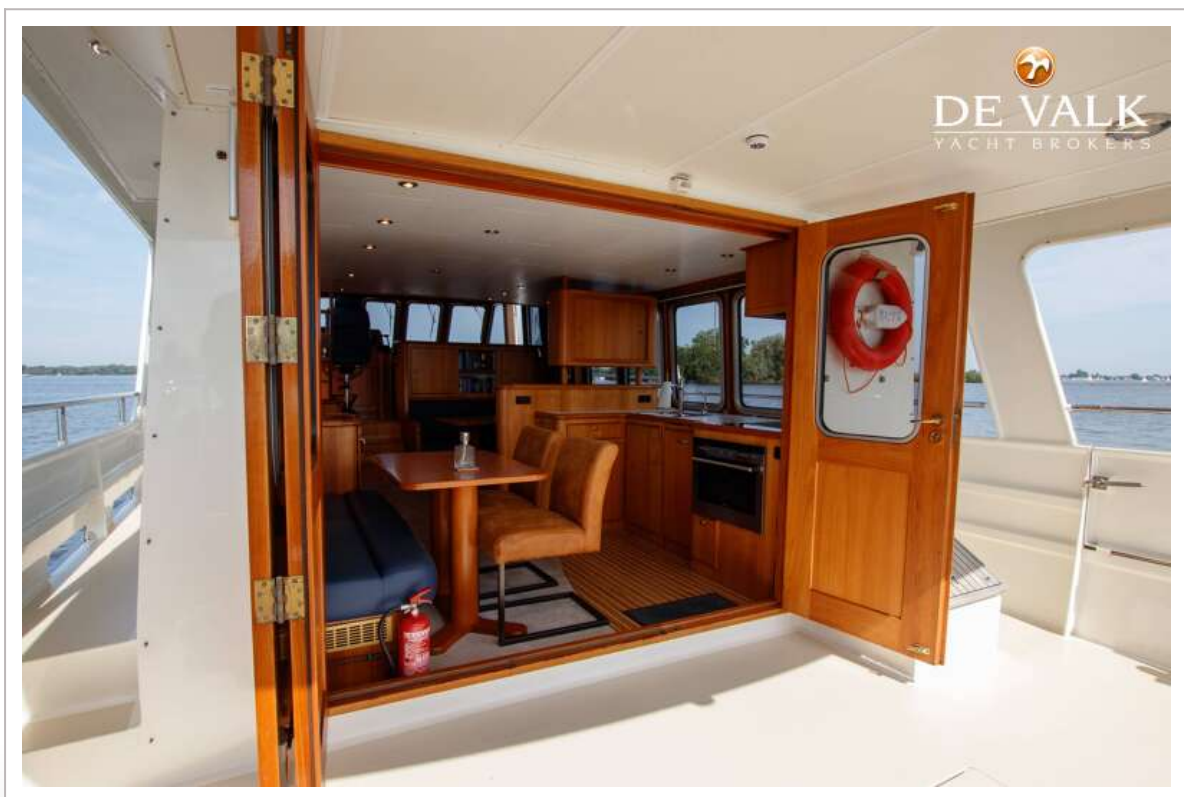




# ALMTRAWLER 1600 AD



# ALMTRAWLER 1600 AD

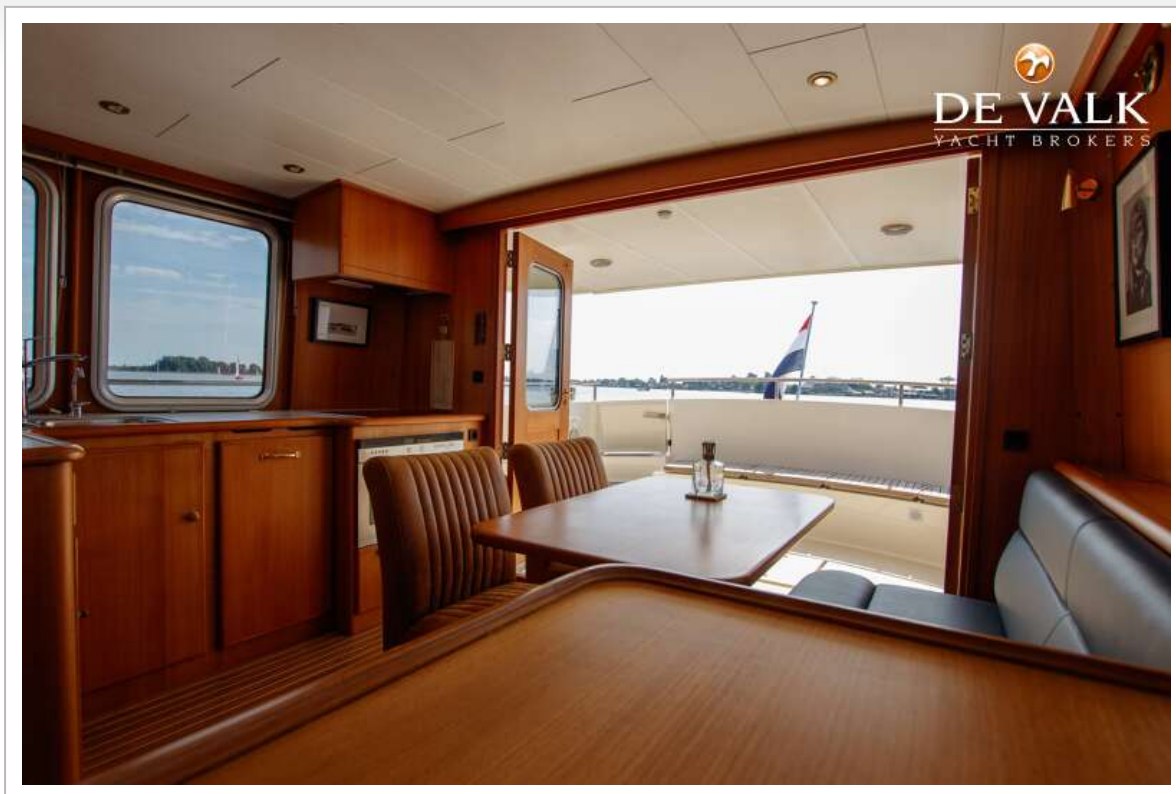




# ALMTRAWLER 1600 AD



# ALMTRAWLER 1600 AD





# ALMTRAWLER 1600 AD

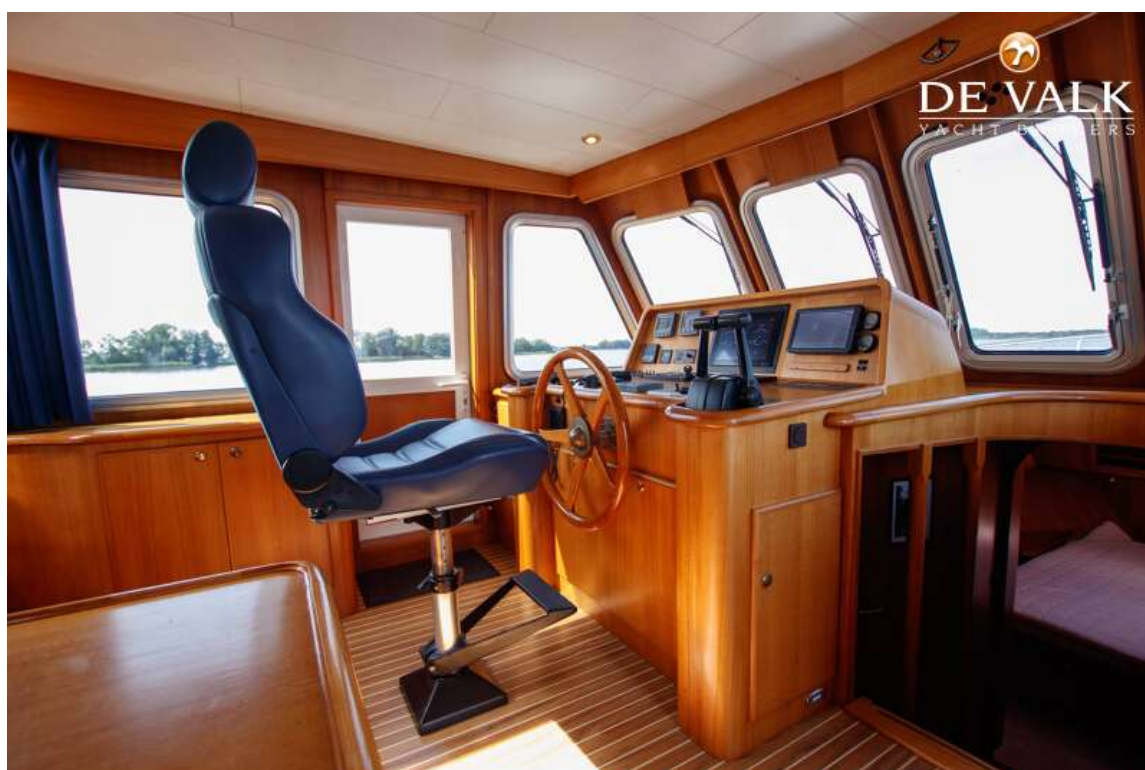


# ALMTRAWLER 1600 AD

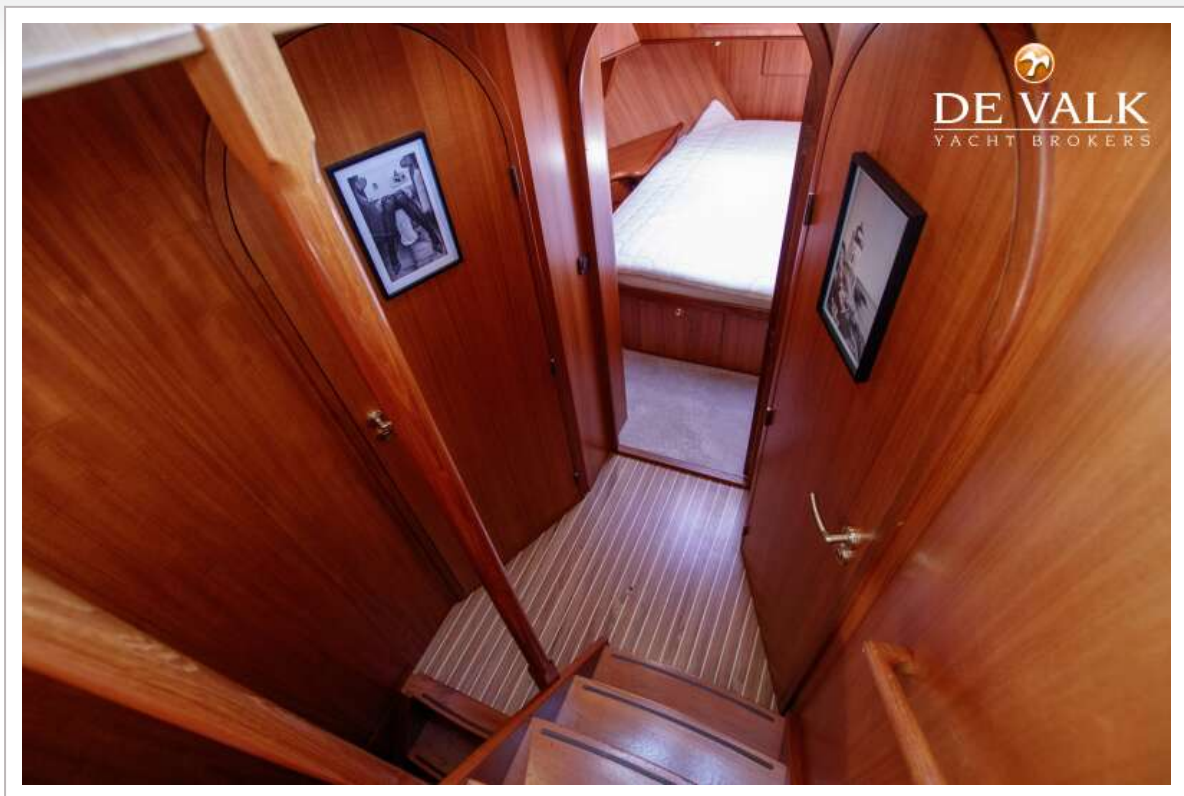




# ALMTRAWLER 1600 AD

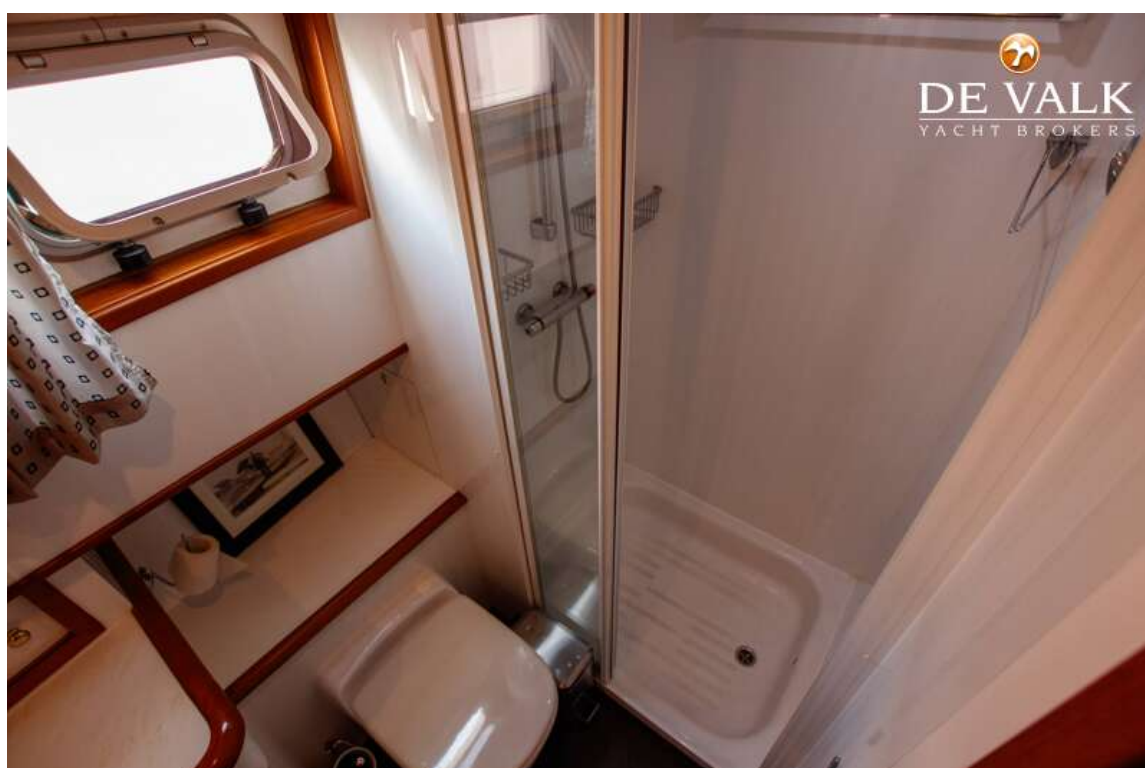


# ALMTRAWLER 1600 AD

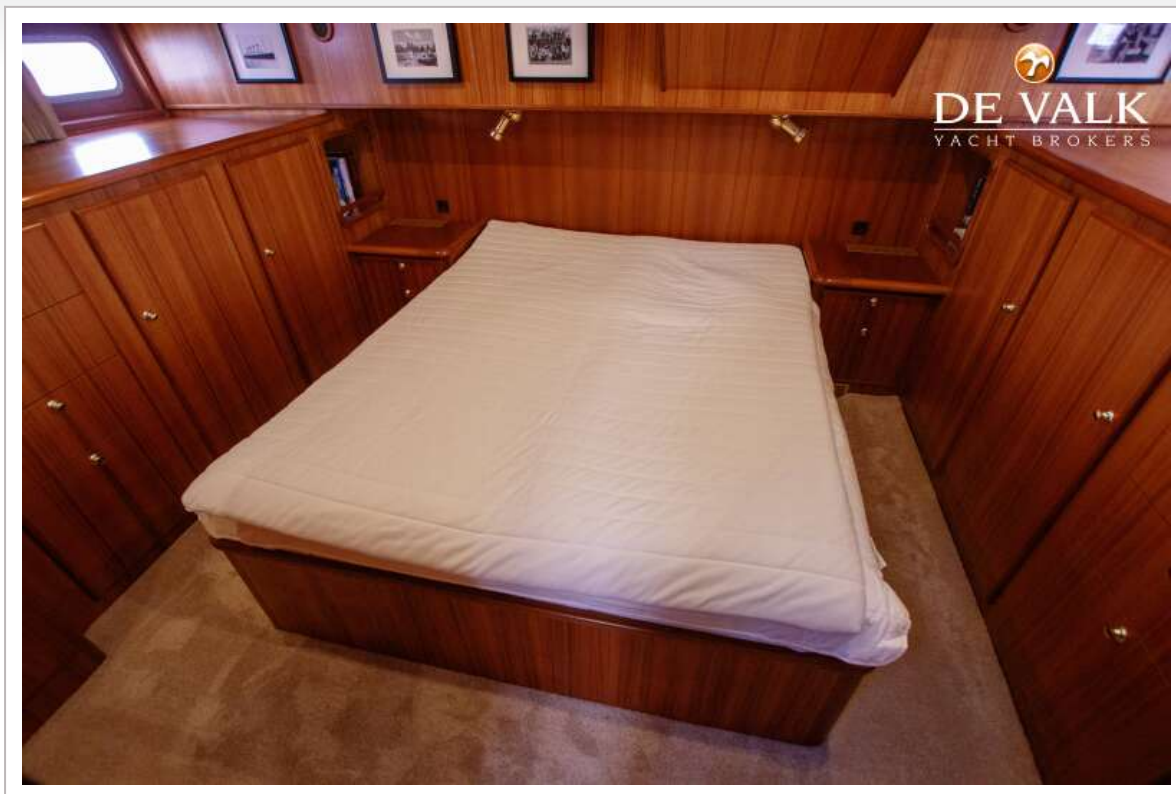




# ALMTRAWLER 1600 AD



# ALMTRAWLER 1600 AD

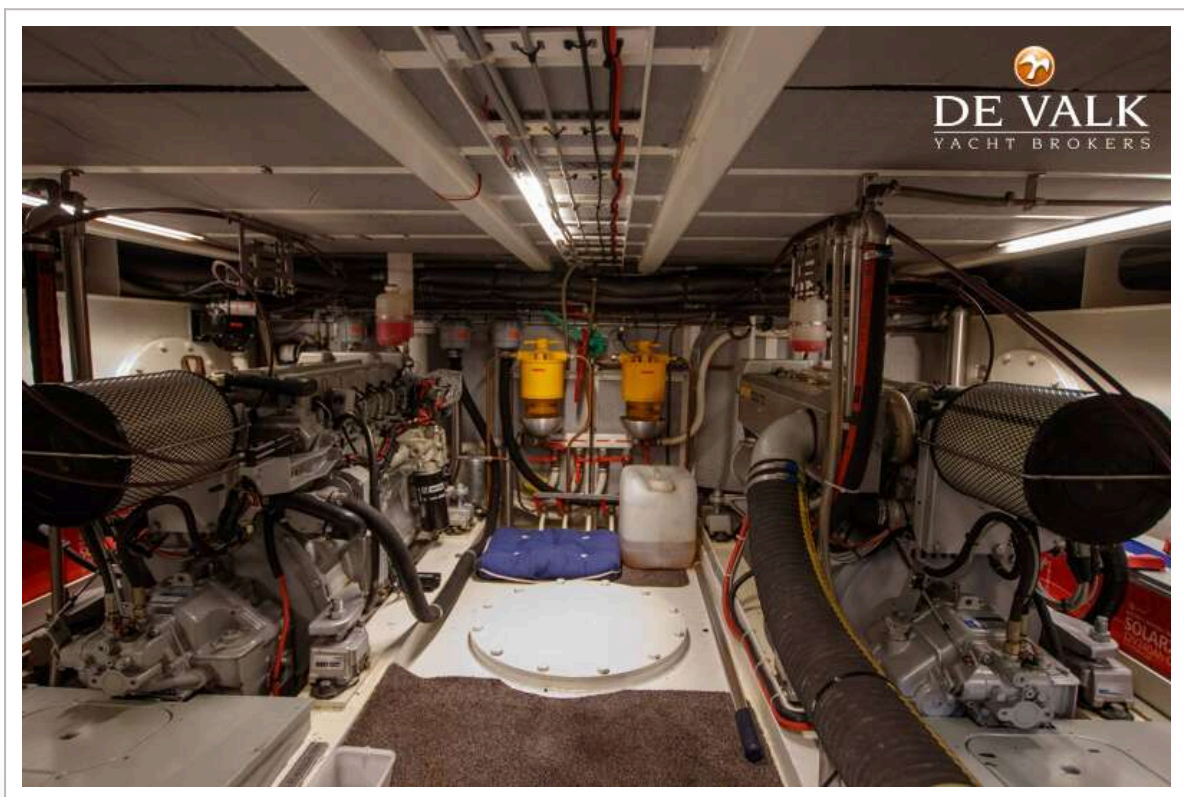
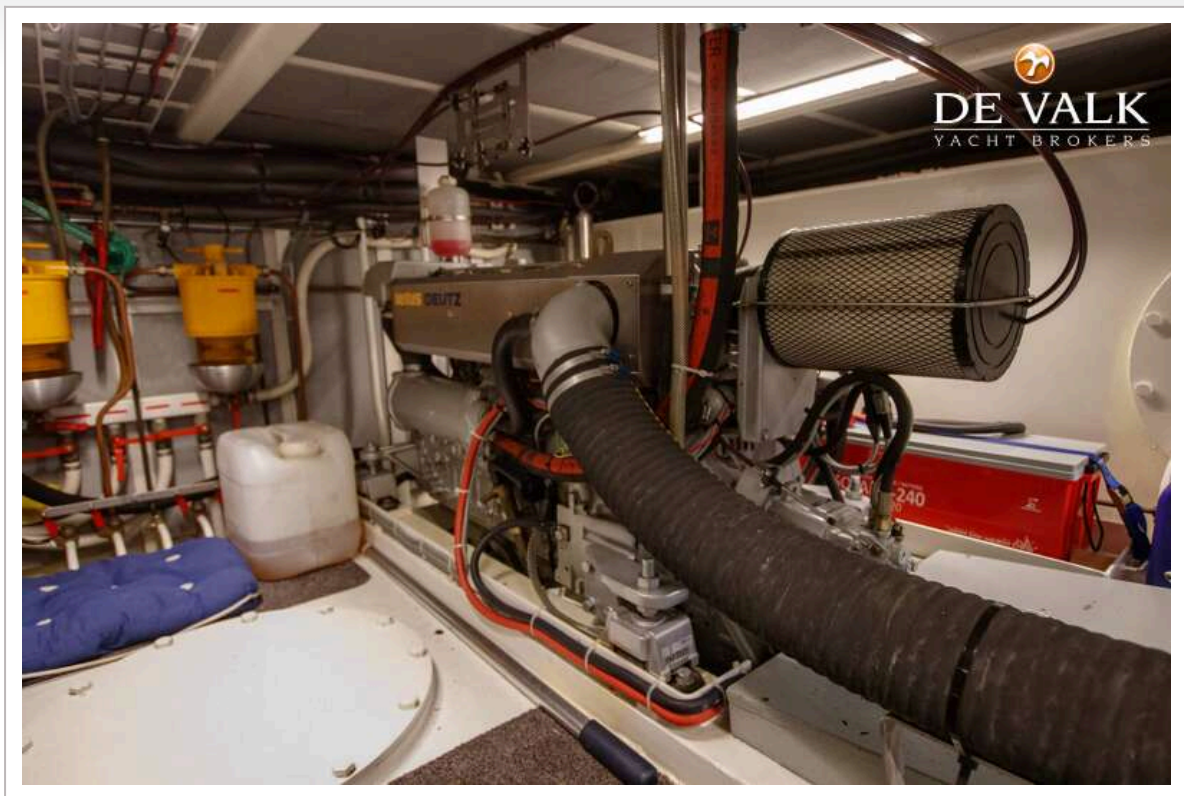




# ALMTRAWLER 1600 AD



# ALMTRAWLER 1600 AD





# ALMTRAWLER 1600 AD



# ALMTRAWLER 1600 AD

